



2017

**MTCF**  
Michigan Traffic  
Crash Facts

# Michigan Traffic Crash Facts

## Reporting Criteria

Please pay particular attention to the wording when interpreting the three levels of data gathered for this report.

### Crash

The Crash Level analyzes data related to crash events and returns one result per crash.

Examples: Time, weather, and location.

### Units

The Units Level analyzes the experience of the units in the crash and returns one result per vehicle, driver, pedestrian, bicyclist, or train.

Examples: Vehicle type, driver condition, and unit events.

### People

The People Level analyzes the experience of the people involved in the crash and returns one result per occupant/person/party.

Examples: Age, injury severity, and seat belt or helmet use.

### **KABCO Injury Indicator:**

K = Killed

A = Suspected Serious Injury

B = Suspected Minor Injury

C = Possible Injury

O = No Injury

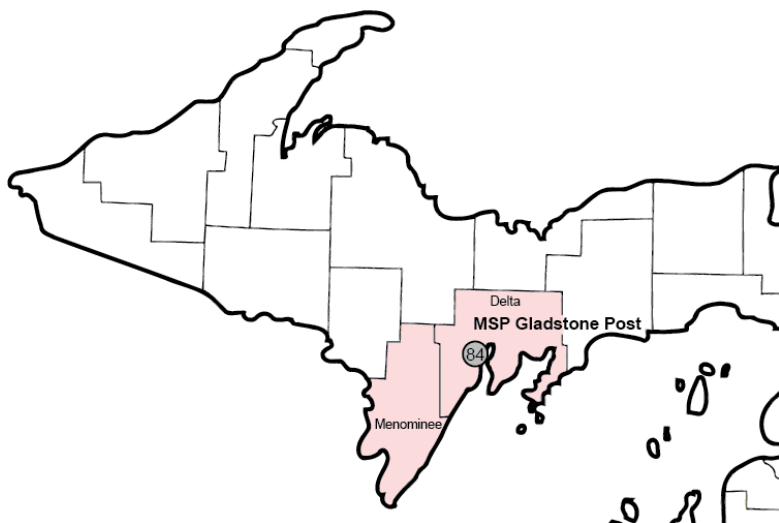
Property Damage Only (PDO)



## Michigan State Police (MSP) Post 84 - Gladstone

### 2017 Traffic Crash Data & 2013-2017 5-Year Trends

Post 84 is comprised of Delta and Menominee counties. Trend tables for this report are based on those counties.



### Sources:

The crashes in this report occurred on public roadways in Michigan and resulted in injuries, fatalities, or property damage (with \$1,000 as a reporting threshold). The information was gathered from Michigan Traffic Crash Report Forms (UD-10) submitted by local police departments, sheriff's offices, and the Michigan State Police. Other related information was obtained from the departments of Transportation, State, and Community Health.

This page left intentionally blank

## MSP Post 84 - Gladstone

- There were 1,761 crashes in Post 84 during 2017. [Page 1]
- A total of 12 fatalities resulted from 10 fatal crashes in 2017 in Post 84. [Page 1]
- There were 314 injuries and 236 injury crashes. [Page 1]
- There were 1,515 property damage only crashes (no fatalities or injuries). [Page 1]
- December had the highest number of crashes (203). [Pages 1-2]
- November, October, December, May, March, April, February, July, June and September had the highest number of fatal crashes (1) while April and March had the highest number of fatalities (2). [Pages 1-2]
- November had the highest number of injury crashes (27) and injuries (43). [Page 1]
- December had the highest number of property damage only crashes (180). [Page 1]
- Of all vehicles involved in fatal crashes, 1 (6.3%) were motorcycles. [Page 1]
- Friday was the day of the week with the highest number of crashes (313) and fatal crashes (3). [Pages 2-3]
- The 3:00 PM - 5:59 PM time period had the highest number of crashes (327). The 3:00 PM - 5:59 PM time period had the highest number of fatal crashes (3). [Pages 5-6]
- During the period from 2013 to 2017, the highest number of deer crashes occurred in 2013 (1,001). The 6:00 AM - 8:59 AM time period had the highest number of deer-involved crashes. There were 2 fatal crashes involving deer in 2017. [Pages 7-8]
- Delta County (75.8%) had the highest number of crashes in Post 84 in 2017, followed by Menominee County (24.2%), and (0.0%). [Page 8]
- Delta County (83.3%) had the highest number of fatalities in Post 84 in 2017, followed by Menominee County (16.7%), and (0.0%). [Page 8]
- The highest number of drivers in crashes (2,838) occurred during 2013 and the highest number of drivers coded drinking in crashes (59) occurred during 2017 within the five year period between 2013 and 2017. [Page 9]
- A total of 61 crashes involved alcohol in 2017. [Page 10]
- Alcohol-involved fatal crashes were the highest in 2013 during the five-year period from 2013 to 2017 at 3. [Page 10]
- A total of 25 crashes, 0 fatal crashes, and 1 suspected serious injury crashes involved drugs in 2017. [Page 11]
- There were 2,138 drivers wearing seatbelts and 30 drivers not wearing seatbelts in crashes in 2017. Of the 30 drivers not wearing seat belts, 2 (6.7%) were killed and 15 (50.0%) were injured. [Pages 14-16]
- The most common hazardous action coded for drivers in 2017 in all crashes was unable to stop in assured clear distance (198), while the most common hazardous action coded for drivers in fatal crashes was failed to yield (3). [Page 17]

# MSP Post 84 - Gladstone (continued)

## Post 84 Experience

In 2017:

There were 2,485 drivers involved in 1,761 motor vehicle crashes in MSP Post 84. Of those crashes, 10 were classified as fatal, resulting in 12 fatalities. An additional 314 persons were injured.

Post 84 experienced the highest number of motor vehicle crashes (203) in December, the highest number of fatal crashes (1) in February, March, April, May, June, July, September, October, November and December and the highest number of persons killed (2) in March and April.

Michigan driver statistics indicate 6.0 percent of licensed drivers in Post 84 were age 16-20, and 11.5 percent of drivers in crashes were also in that age group.

## 2017 - Crashes and Injuries by Month

Month	Crashes				Persons	
	Total	Fatal	Injury	Property Damage Only (PDO)	Fatalities	Injuries
January	145	0	19	126	0	23
February	152	1	20	131	1	28
March	146	1	23	122	2	28
April	82	1	17	64	2	21
May	92	1	15	76	1	24
June	132	1	17	114	1	20
July	145	1	19	125	1	25
August	119	0	20	99	0	24
September	163	1	13	149	1	17
October	182	1	24	157	1	32
November	200	1	27	172	1	43
December	203	1	22	180	1	29
<b>Total</b>	<b>1,761</b>	<b>10</b>	<b>236</b>	<b>1,515</b>	<b>12</b>	<b>314</b>

## 2017 - Driver Statistics

Age Group	Post 84			Driver Rates	
	2017 Population	Licensed Drivers	Drivers in Crashes	Per 10k Population	Per 10k Licensed
0 - 15	9,923	343	8	8.1	233.2
16 - 20	3,230	2,780	287	888.5	1,032.4
21 - 24	2,255	2,219	185	820.4	833.7
25 - 64	29,653	28,111	1,503	506.9	534.7
65 +	13,950	12,584	389	278.9	309.1
Unknown	0	0	113	--	--
<b>Total</b>	<b>59,011</b>	<b>46,037</b>	<b>2,485</b>	<b>421.1</b>	<b>539.8</b>

## 2017 - Vehicles in Crashes

Vehicle Type	Motor Vehicles		Fatal Crashes		Injury Crashes	PDO Crashes
	Number of Vehicles	% of Total	Number	% of Total	Number	Number
Passenger car, SUV, van	1,755	70.6	10	62.5	260	1,485
Motor home	7	0.3	0	0.0	1	6
Pickup truck	552	22.2	0	0.0	76	476
Small truck under 10,000 lbs. GVWR	15	0.6	0	0.0	3	12
Motorcycle	22	0.9	1	6.3	16	5
Moped / goped	4	0.2	1	6.3	3	0
Go-cart / golf cart	1	0.0	0	0.0	1	0
Snowmobile	3	0.1	0	0.0	2	1
Off-Road Vehicle - ORV / All-Terrain Vehicle - ATV	10	0.4	1	6.3	8	1
Other	14	0.6	1	6.3	3	10
Truck/bus over 10,000 lbs.	75	3.0	2	12.5	15	58
Unknown	27	1.1	0	0.0	0	27
<b>Total</b>	<b>2,485</b>	<b>100.0</b>	<b>16</b>	<b>100.0</b>	<b>388</b>	<b>2,081</b>

## 5-Year Trend - Crashes by Month

Month	2013		2014		2015		2016		2017	
	Total Crashes	Fatal Crashes	Total Crashes	Fatal Crashes	Total Crashes	Fatal Crashes	Total Crashes	Fatal Crashes	Total Crashes	Fatal Crashes
January	234	2	218	0	160	1	153	0	145	0
February	183	0	139	0	138	0	93	0	152	1
March	146	1	135	0	103	0	84	1	146	1
April	152	1	125	0	98	1	90	0	82	1
May	118	0	131	0	106	0	109	1	92	1
June	190	0	163	1	151	1	140	0	132	1
July	168	0	127	1	124	1	97	0	145	1
August	136	0	102	0	114	0	135	1	119	0
September	167	0	124	0	144	1	129	0	163	1
October	183	0	176	1	137	0	147	1	182	1
November	193	0	224	2	175	0	179	0	200	1
December	229	1	169	0	126	0	187	0	203	1
<b>Total</b>	<b>2,099</b>	<b>5</b>	<b>1,833</b>	<b>5</b>	<b>1,576</b>	<b>5</b>	<b>1,543</b>	<b>4</b>	<b>1,761</b>	<b>10</b>

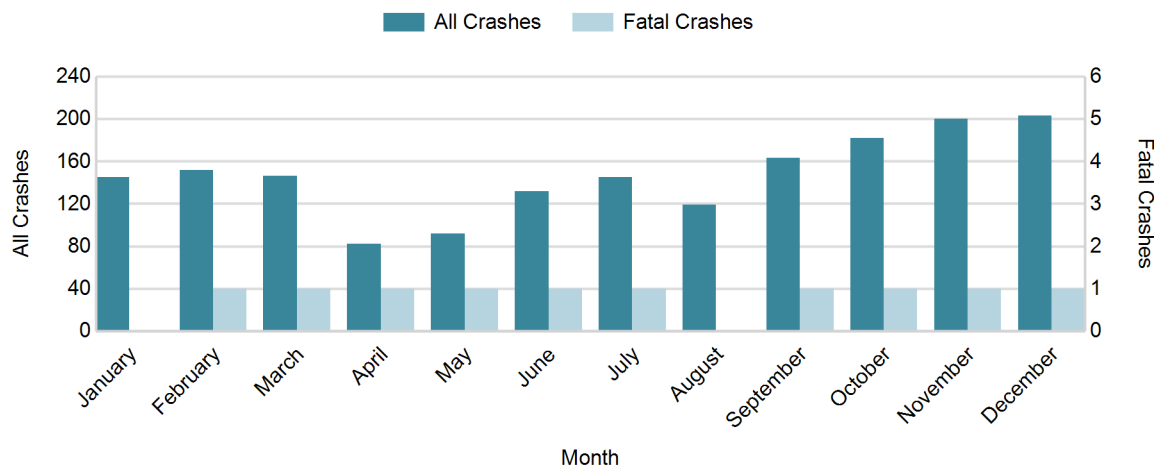
Note: † Indicates that the highest number of total crashes reported in the 5-year period occurred in the same month

## 5-Year Trend - Crashes by Day of Week

Day	2013		2014		2015		2016		2017	
	Total Crashes	Fatal Crashes	Total Crashes	Fatal Crashes	Total Crashes	Fatal Crashes	Total Crashes	Fatal Crashes	Total Crashes	Fatal Crashes
Monday	274	1	261	2	245	0	225	1	226	2
Tuesday	296	1	261	1	209	0	219	0	279	1
Wednesday	308	1	259	0	223	1	213	1	266	1
Thursday	313	0	283	1	219	0	240	1	251	1
Friday	360	0	313	0	262	1	236	0	313	3
Saturday	294	1	228	0	202	1	223	0	219	1
Sunday	254	1	228	1	216	2	187	1	207	1
<b>Total</b>	<b>2,099</b>	<b>5</b>	<b>1,833</b>	<b>5</b>	<b>1,576</b>	<b>5</b>	<b>1,543</b>	<b>4</b>	<b>1,761</b>	<b>10</b>

Note: † Indicates that the highest number of total crashes reported in the 5-year period occurred on the same day of the week

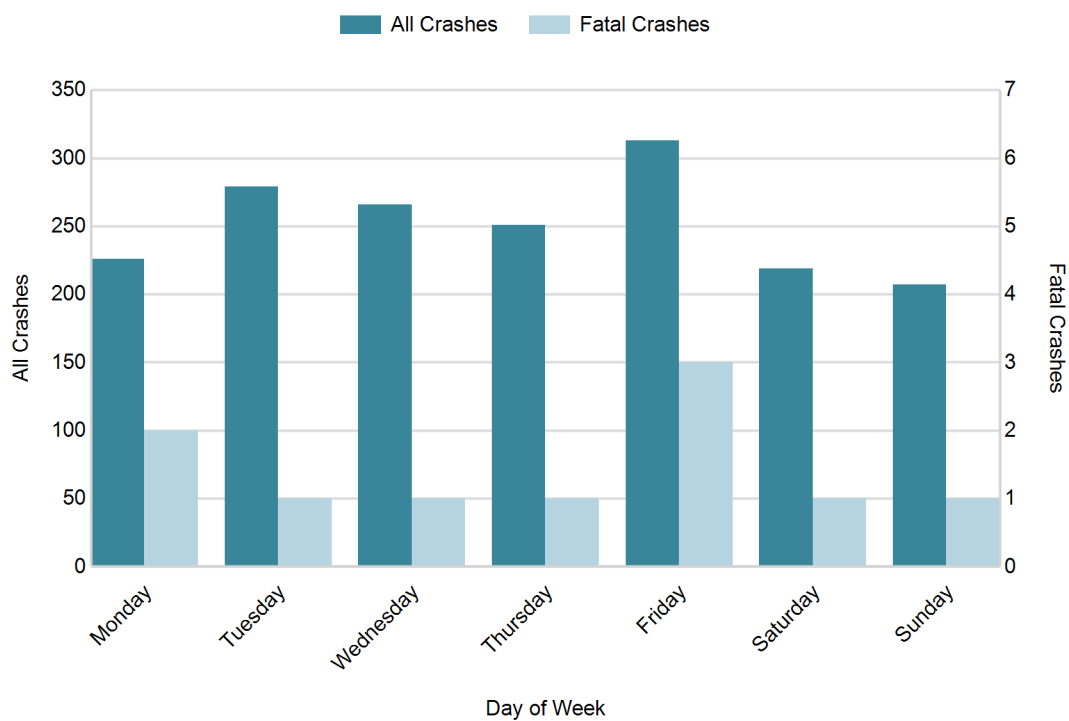
## 2017 Crashes by Month



## 2017 - Crashes by Day of Week

Day	All Crashes		Fatal Crashes		Injury Crashes			PDO Crashes
	Number	% of Total	Number	% of Fatal	A	B	C	Number
Monday	226	12.8	2	20.0	3	7	19	195
Tuesday	279	15.8	1	10.0	7	9	24	238
Wednesday	266	15.1	1	10.0	5	13	18	229
Thursday	251	14.3	1	10.0	6	9	17	218
Friday	313	17.8	3	30.0	6	13	23	268
Saturday	219	12.4	1	10.0	4	10	20	184
Sunday	207	11.8	1	10.0	8	7	8	183
<b>Total</b>	<b>1,761</b>	<b>100.0</b>	<b>10</b>	<b>100.0</b>	<b>39</b>	<b>68</b>	<b>129</b>	<b>1,515</b>

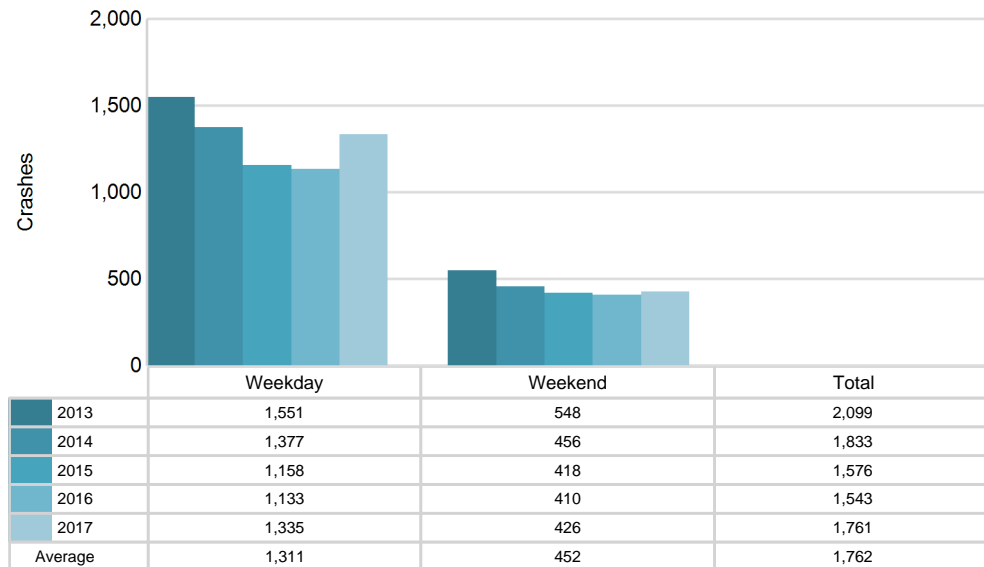
## 2017 Day of Week and Severity



## 5-Year Trend - Crashes by Weekday and Weekend

Portion of Week	2013		2014		2015		2016		2017	
	Total Crashes	Fatal Crashes	Total Crashes	Fatal Crashes	Total Crashes	Fatal Crashes	Total Crashes	Fatal Crashes	Total Crashes	Fatal Crashes
Weekday	1,551	3	1,377	4	1,158	2	1,133	3	1,335	8
Weekend	548	2	456	1	418	3	410	1	426	2
<b>Total</b>	<b>2,099</b>	<b>5</b>	<b>1,833</b>	<b>5</b>	<b>1,576</b>	<b>5</b>	<b>1,543</b>	<b>4</b>	<b>1,761</b>	<b>10</b>

## 5-Year Crash Trends by Weekday (Monday - Friday) and Weekend (Saturday & Sunday)

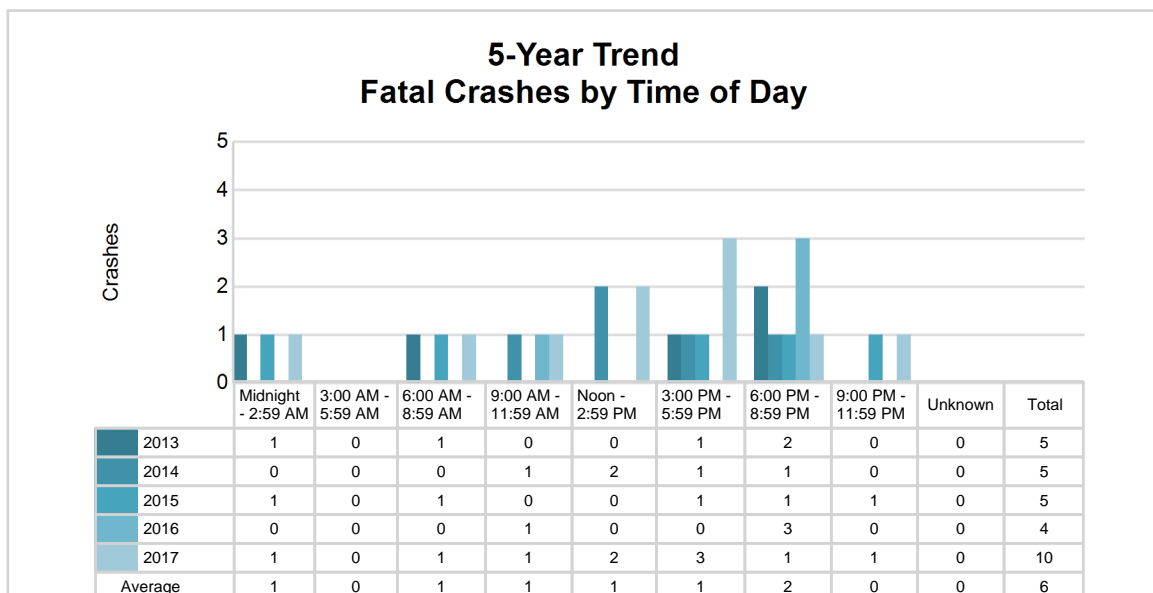
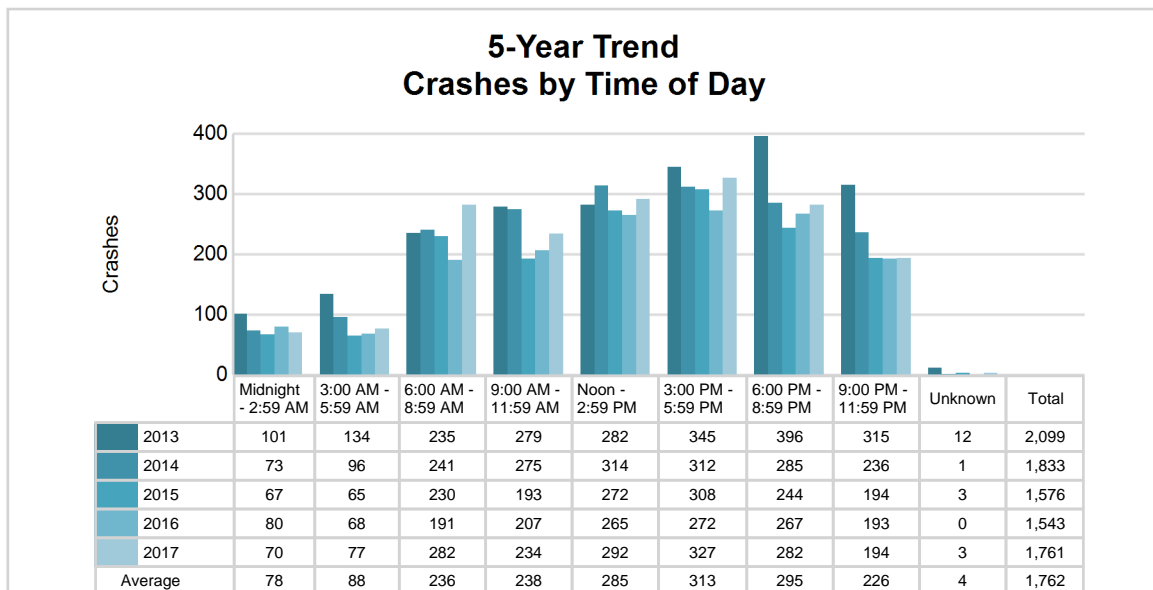


# MSP Post 84 - Gladstone (continued)

## 5-Year Trend - Crashes by Time of Day

Time of Day	2013		2014		2015		2016		2017	
	Total Crashes	Fatal Crashes	Total Crashes	Fatal Crashes	Total Crashes	Fatal Crashes	Total Crashes	Fatal Crashes	Total Crashes	Fatal Crashes
Midnight - 2:59 AM	101	1	73	0	67	1	80	0	70	1
3:00 AM - 5:59 AM	134	0	96	0	65	0	68	0	77	0
6:00 AM - 8:59 AM	235	1	241	0	230	1	191	0	282	1
9:00 AM - 11:59 AM	279	0	275	1	193	0	207	1	234	1
Noon - 2:59 PM	282	0	314	2	272	0	265	0	292	2
3:00 PM - 5:59 PM	345	1	312	1	308	1	272	0	327	3
6:00 PM - 8:59 PM	396	2	285	1	244	1	267	3	282	1
9:00 PM - 11:59 PM	315	0	236	0	194	1	193	0	194	1
Unknown	12	0	1	0	3	0	0	0	3	0
<b>Total</b>	<b>2,099</b>	<b>5</b>	<b>1,833</b>	<b>5</b>	<b>1,576</b>	<b>5</b>	<b>1,543</b>	<b>4</b>	<b>1,761</b>	<b>10</b>

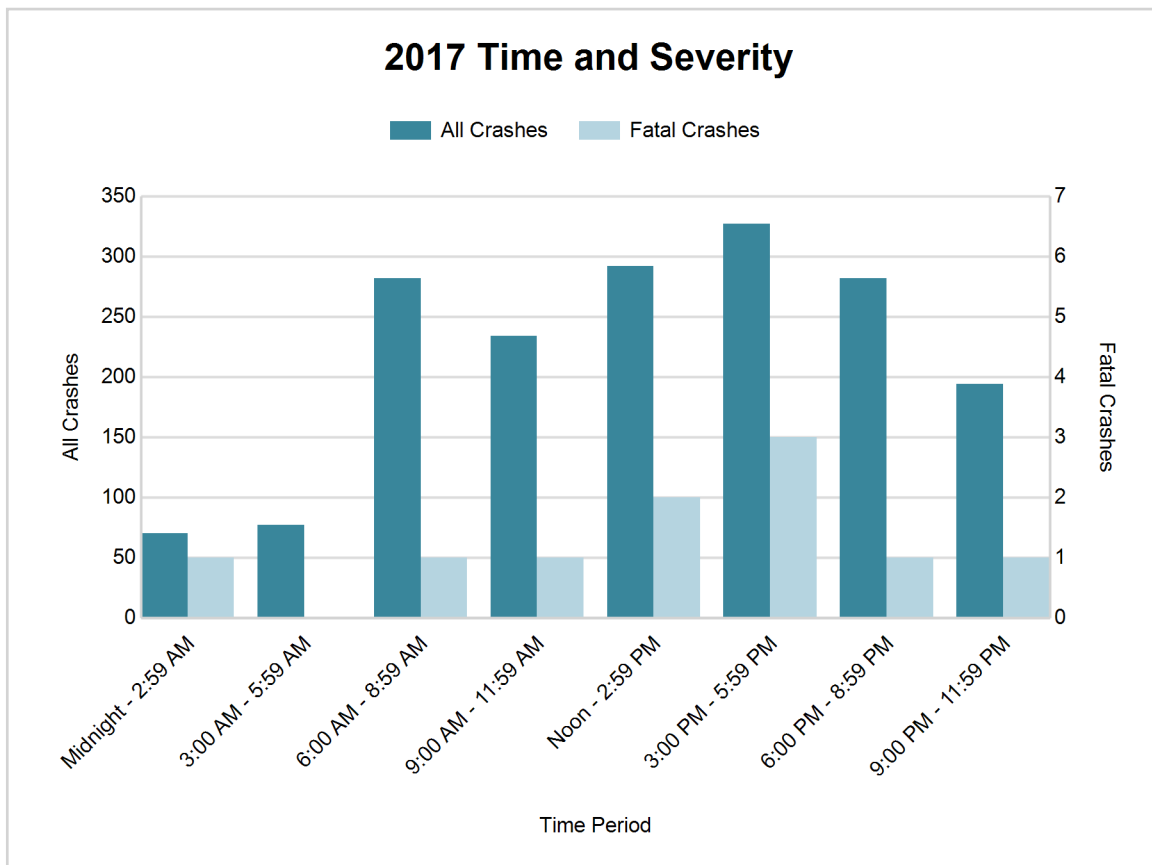
Note: † Indicates that the highest number of total crashes reported in the 5-year period occurred in the same time period





## 2017 - Time and Severity

Time of Day	All Crashes		Fatal Crashes		Injury Crashes			PDO Crashes
	Number	% of Total	Number	% of Fatal	A	B	C	Number
Midnight - 2:59 AM	70	4.0	1	10.0	1	4	0	64
3:00 AM - 5:59 AM	77	4.4	0	0.0	1	1	3	72
6:00 AM - 8:59 AM	282	16.0	1	10.0	5	5	16	255
9:00 AM - 11:59 AM	234	13.3	1	10.0	5	8	22	198
Noon - 2:59 PM	292	16.6	2	20.0	6	20	31	233
3:00 PM - 5:59 PM	327	18.6	3	30.0	7	12	33	272
6:00 PM - 8:59 PM	282	16.0	1	10.0	9	13	15	244
9:00 PM - 11:59 PM	194	11.0	1	10.0	5	5	8	175
Unknown	3	0.2	0	0.0	0	0	1	2
<b>Total</b>	<b>1,761</b>	<b>100.0</b>	<b>10</b>	<b>100.0</b>	<b>39</b>	<b>68</b>	<b>129</b>	<b>1,515</b>

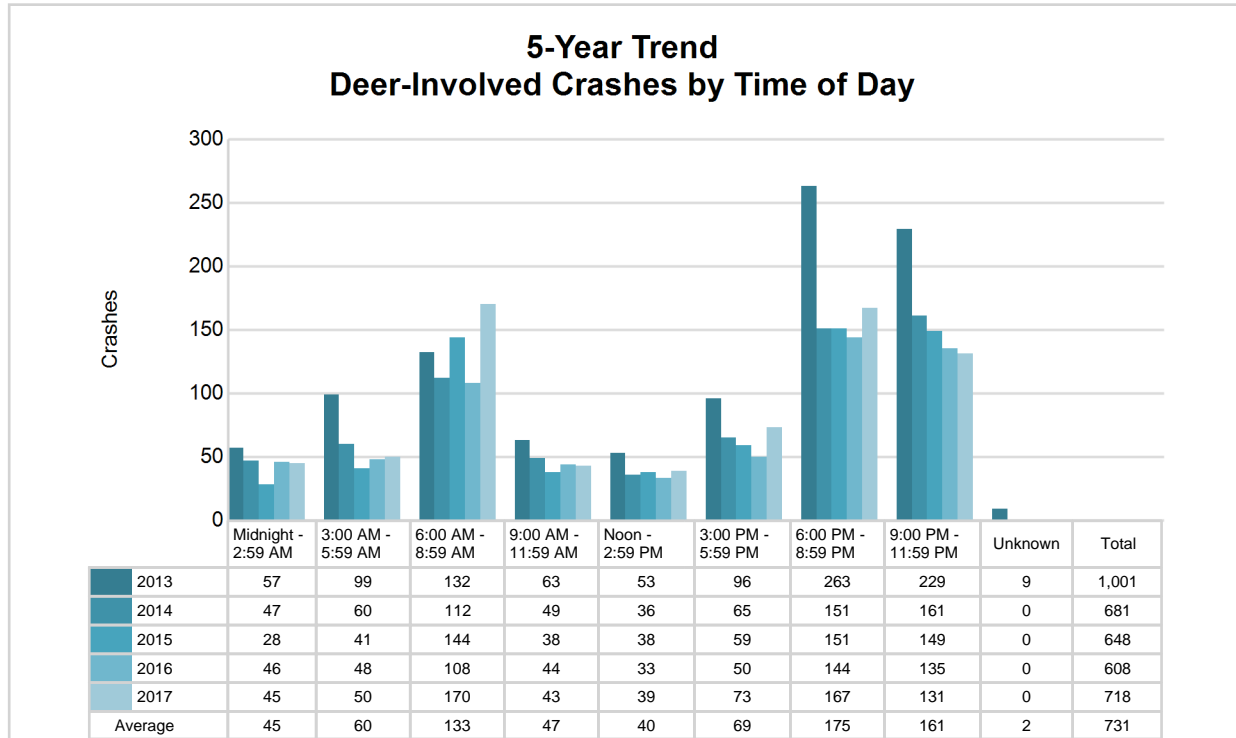


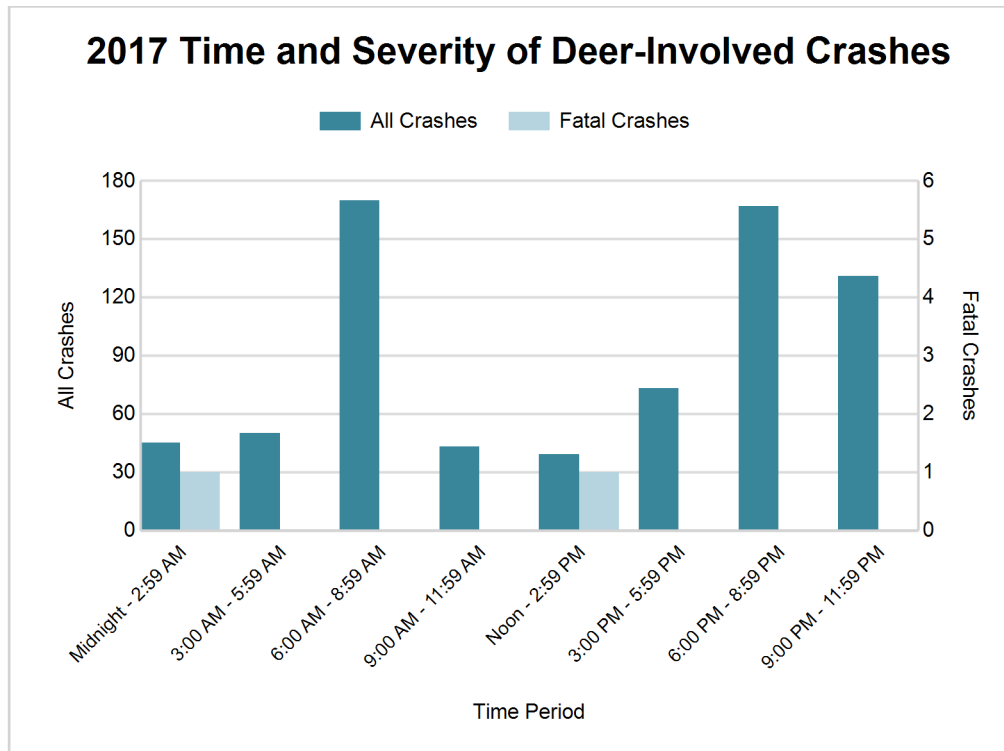
## MSP Post 84 - Gladstone (continued)

### 5-Year Trend - Deer-Involved Crashes by Time of Day

Time of Day	2013		2014		2015		2016		2017	
	Total Crashes	Fatal Crashes	Total Crashes	Fatal Crashes	Total Crashes	Fatal Crashes	Total Crashes	Fatal Crashes	Total Crashes	Fatal Crashes
Midnight - 2:59 AM	57	0	47	0	28	0	46	0	45	1
3:00 AM - 5:59 AM	99	0	60	0	41	0	48	0	50	0
6:00 AM - 8:59 AM	132	0	112	0	144	0	108	0	170	0
9:00 AM - 11:59 AM	63	0	49	0	38	0	44	0	43	0
Noon - 2:59 PM	53	0	36	0	38	0	33	0	39	1
3:00 PM - 5:59 PM	96	1	65	0	59	0	50	0	73	0
6:00 PM - 8:59 PM	263	0	151	0	151	0	144	0	167	0
9:00 PM - 11:59 PM	229	0	161	0	149	0	135	0	131	0
Unknown	9	0	0	0	0	0	0	0	0	0
<b>Total</b>	<b>1,001</b>	<b>1</b>	<b>681</b>	<b>0</b>	<b>648</b>	<b>0</b>	<b>608</b>	<b>0</b>	<b>718</b>	<b>2</b>

Note: † Indicates that the highest number of total crashes reported in the 5-year period occurred in the same time period





#### 2017 - Reported Motor Vehicle Crashes by County

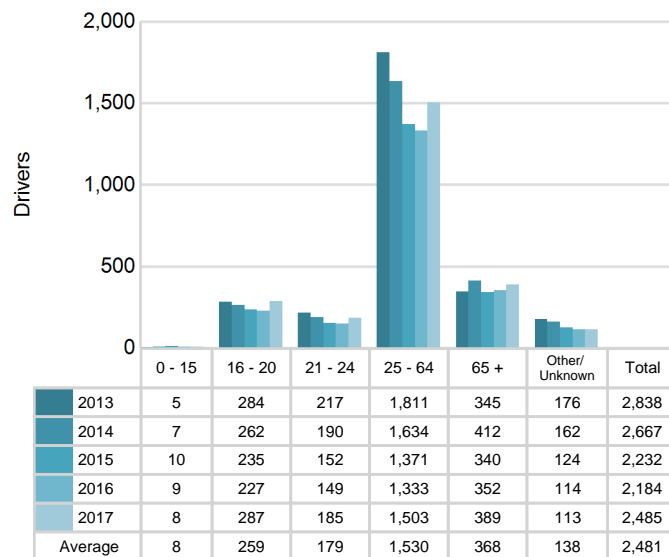
County	Crashes											Persons	
	Total	Fatal	Injury	Property Damage	Inter-state	US Route	State Route	Local Street	Alcohol-Involved	Drug-Involved	Deer-Involved	Fatalities	Injuries
Delta	1,334	8	154	1,172	0	498	230	600	37	17	597	10	202
Menominee	427	2	82	343	0	165	47	203	24	8	121	2	112
<b>Total</b>	<b>1,761</b>	<b>10</b>	<b>236</b>	<b>1,515</b>	<b>0</b>	<b>663</b>	<b>277</b>	<b>803</b>	<b>61</b>	<b>25</b>	<b>718</b>	<b>12</b>	<b>314</b>

# MSP Post 84 - Gladstone (continued)

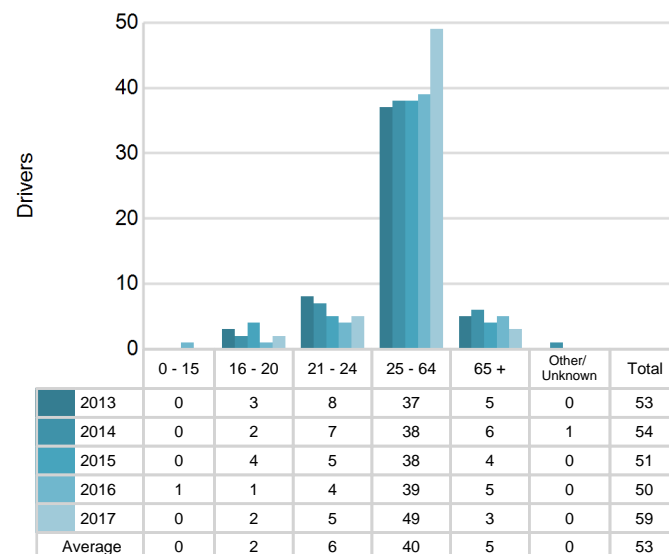
## 5-Year Trend - Drivers in Crashes Coded Drinking by Driver Age

Driver Age	2013		2014		2015		2016		2017	
	Total Drivers in Crashes	Total Drivers Coded Drinking	Total Drivers in Crashes	Total Drivers Coded Drinking	Total Drivers in Crashes	Total Drivers Coded Drinking	Total Drivers in Crashes	Total Drivers Coded Drinking	Total Drivers in Crashes	Total Drivers Coded Drinking
0 - 15	5	0	7	0	10	0	9	1	8	0
16 - 20	284	3	262	2	235	4	227	1	287	2
21 - 24	217	8	190	7	152	5	149	4	185	5
25 - 64	1,811	37	1,634	38	1,371	38	1,333	39	1,503	49
65 +	345	5	412	6	340	4	352	5	389	3
Unknown	176	0	162	1	124	0	114	0	113	0
<b>Total</b>	<b>2,838</b>	<b>53</b>	<b>2,667</b>	<b>54</b>	<b>2,232</b>	<b>51</b>	<b>2,184</b>	<b>50</b>	<b>2,485</b>	<b>59</b>

### 5-Year Trend Total Drivers in Crashes by Age



### 5-Year Trend Total Drivers Coded Drinking by Age



## 2017 - Bodily Alcohol Concentration (BAC) Results Among All Vehicle Drivers in Alcohol-Involved Crashes by Age

Age Group	Drivers				BAC Result Range for Drivers Coded Drinking				
	Total Drivers in Alcohol-Involved Crashes	Total Drivers Tested in all Crashes	Total Drivers Coded Drinking, Tested	Total Drivers Coded Drinking	BAC = 0.00	BAC 0.01 g/dL to 0.07 g/dL	BAC 0.08 g/dL to 0.16 g/dL	BAC 0.17 g/dL and Above	BAC Not Reported
0 - 15	0	0	0	0	0	0	0	0	0
16 - 20	3	3	1	2	0	0	0	0	2
21 - 24	7	5	3	5	0	0	1	1	3
25 - 64	56	42	32	49	0	2	11	9	27
65 +	4	7	2	3	0	0	1	1	1
Unknown	2	0	0	0	0	0	0	0	0
<b>Total</b>	<b>72</b>	<b>57</b>	<b>38</b>	<b>59</b>	<b>0</b>	<b>2</b>	<b>13</b>	<b>11</b>	<b>33</b>

Notes: BAC measured in grams (g) per deciliter (dL).

BAC may not be reported if drivers are not tested or if the results are not available immediately (as in the case of a blood test).

A driver may be coded by the officer as drinking even though no test is administered.

## Alcohol-Involved Crashes

In 2017, there were 72 drivers in alcohol-involved crashes; 59 (81.9%) of those drivers were coded as had-been-drinking by the officer on the crash form.

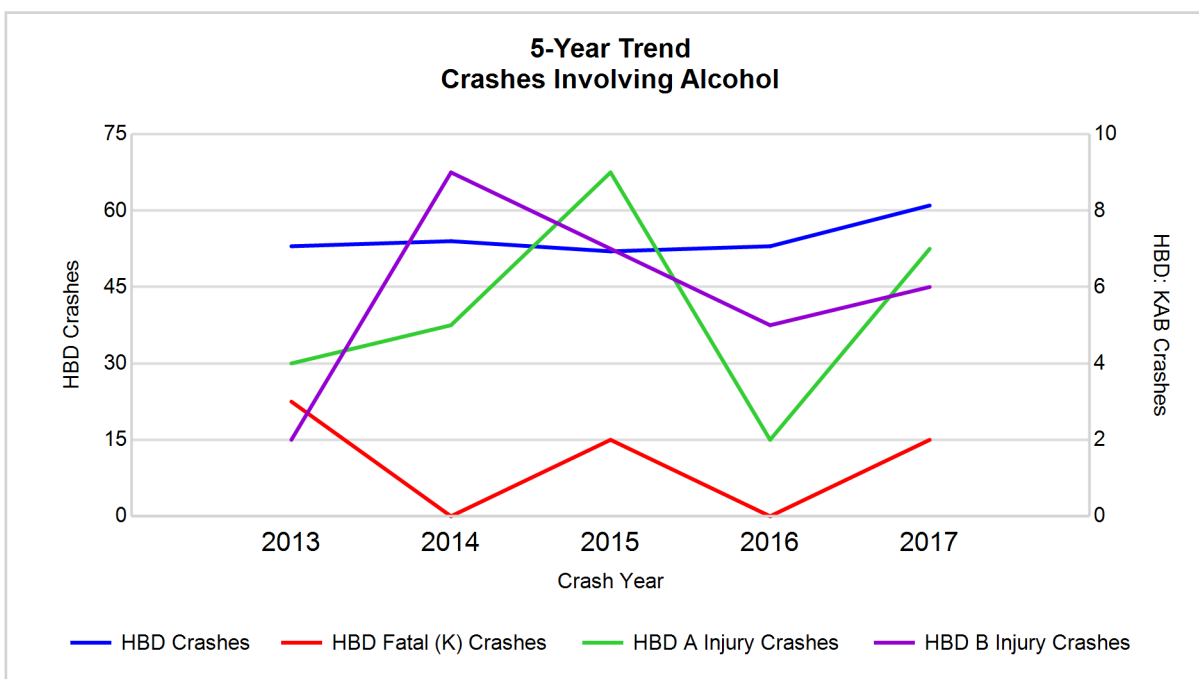
- 24 (40.7%) of the 59 drivers had a blood alcohol concentration (BAC) of 0.08 g/dL (grams per deciliter) or greater, and 11 (45.8%) of the 24 drivers had a BAC at or above 0.17 g/dL.
- 38 (64.4%) of the 59 drivers were coded as had-been-drinking and were tested for alcohol consumption.

## 5-Year Trend - Crashes Involving Alcohol

Year	All Crashes	HBD Crashes	% HBD	Fatal Crashes	HBD Fatal Crashes	% HBD	A Injury Crashes	HBD A Injury Crashes	% HBD	B Injury Crashes	HBD B Injury Crashes	% HBD
2013	2,099	53	2.5	5	3	60.0	23	4	17.4	68	2	2.9
2014	1,833	54	2.9	5	0	0.0	33	5	15.2	68	9	13.2
2015	1,576	52	3.3	5	2	40.0	33	9	27.3	54	7	13.0
2016	1,543	53	3.4	4	0	0.0	29	2	6.9	82	5	6.1
2017	1,761	61**	3.5**	10**	2	20.0	39**	7	17.9	68	6	8.8

Note: \* Indicates that the most recent year is the lowest number or percentage reported in the 5-year period in that column

\*\* Indicates that the most recent year is the highest number or percentage reported in the 5-year period in that column



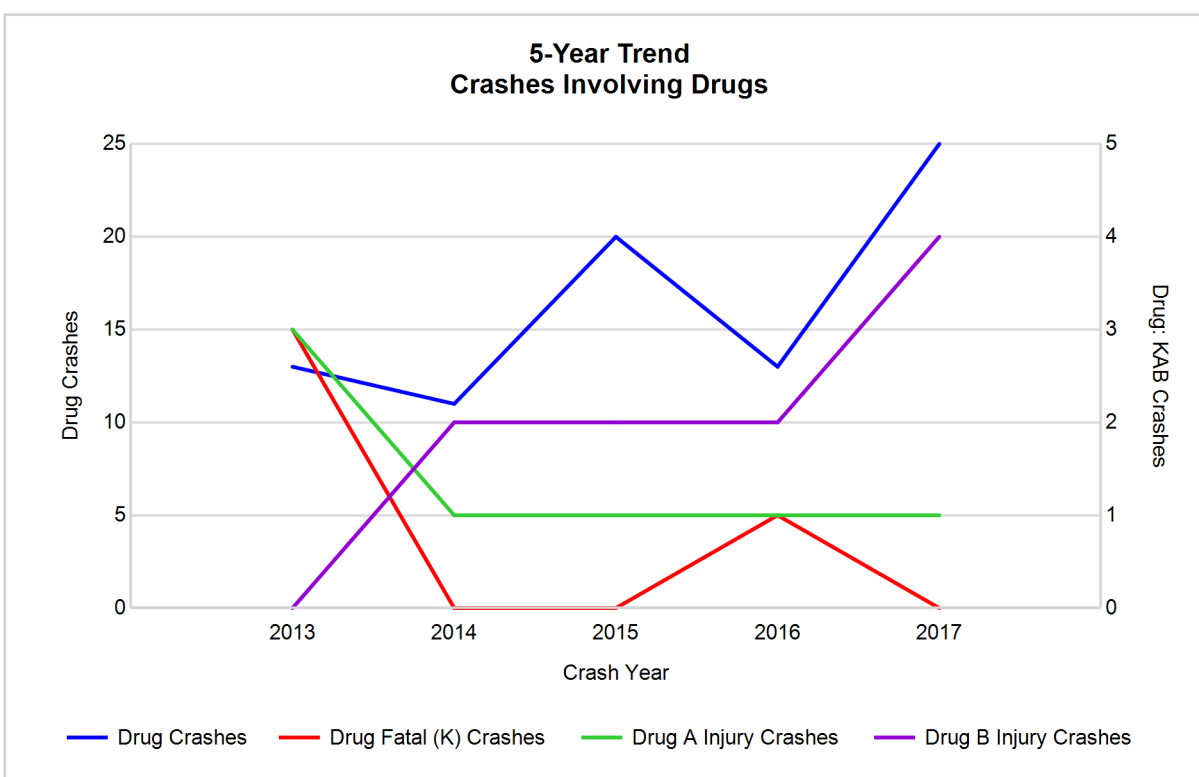
Note: Had-Been-Drinking (HBD)

## 5-Year Trend - Crashes Involving Drugs

Year	All Crashes	Drug Crashes	% Drug	Fatal Crashes	Drug Fatal Crashes	% Drug	A Injury Crashes	Drug A Injury Crashes	% Drug	B Injury Crashes	Drug B Injury Crashes	% Drug
2013	2,099	13	0.6	5	3	60.0	23	3	13.0	68	0	0.0
2014	1,833	11	0.6	5	0	0.0	33	1	3.0	68	2	2.9
2015	1,576	20	1.3	5	0	0.0	33	1	3.0	54	2	3.7
2016	1,543	13	0.8	4	1	25.0	29	1	3.4	82	2	2.4
2017	1,761	25**	1.4**	10**	0	0.0	39**	1	2.6*	68	4**	5.9**

Note: \* Indicates that the most recent year is the lowest number or percentage reported in the 5-year period in that column

\*\* Indicates that the most recent year is the highest number or percentage reported in the 5-year period in that column

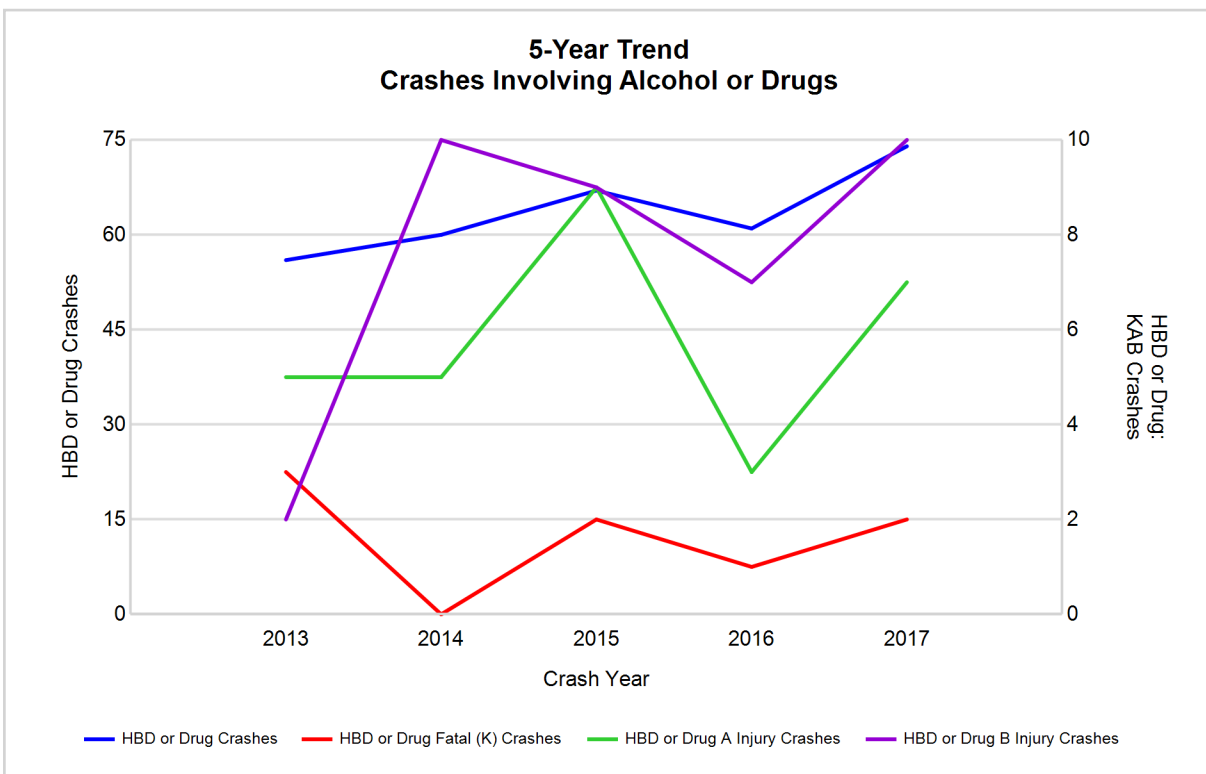


## 5-Year Trend - Crashes Involving Alcohol or Drugs

Year	All Crashes	HBD or Drug Crashes	% HBD or Drug	Fatal Crashes	HBD or Drug Fatal Crashes	% HBD or Drug	A Injury Crashes	HBD or Drug A Injury Crashes	% HBD or Drug	B Injury Crashes	HBD or Drug B Injury Crashes	% HBD or Drug
2013	2,099	56	2.7	5	3	60.0	23	5	21.7	68	2	2.9
2014	1,833	60	3.3	5	0	0.0	33	5	15.2	68	10	14.7
2015	1,576	67	4.3	5	2	40.0	33	9	27.3	54	9	16.7
2016	1,543	61	4.0	4	1	25.0	29	3	10.3	82	7	8.5
2017	1,761	74**	4.2	10**	2	20.0	39**	7	17.9	68	10	14.7

Note: \* Indicates that the most recent year is the lowest number or percentage reported in the 5-year period in that column

\*\* Indicates that the most recent year is the highest number or percentage reported in the 5-year period in that column



Note: Had-Been-Drinking (HBD)

## 2017 - Restraints Worn Among Vehicle Drivers and Injured Passengers by Vehicle Type

Vehicle Type	Total Occupants			Fatalities			A - Suspected Serious			B - Suspected Minor			C - Possible Injury			No Injury		
	Total	Used Restraint	%	Total	Used Restraint	%	Total	Used Restraint	%	Total	Used Restraint	%	Total	Used Restraint	%	Total	Used Restraint	%
Passenger car, SUV, van	1,809	1,581	87.4	9	5	55.6	23	19	82.6	52	43	82.7	132	122	92.4	1,528	1,392	91.1
Motor home	7	7	100.0	0	0	0.0	0	0	0.0	0	0	0.0	0	0	0.0	7	7	100.0
Pickup truck	571	521	91.2	0	0	0.0	4	2	50.0	17	14	82.4	37	31	83.8	493	474	96.1
Small truck under 10,000 lbs. GVWR	15	9	60.0	0	0	0.0	1	0	0.0	0	0	0.0	0	0	0.0	12	9	75.0
Motorcycle	22	11	50.0	1	0	0.0	5	2	40.0	8	4	50.0	3	3	100.0	5	2	40.0
Moped / goped	4	3	75.0	1	0	0.0	0	0	0.0	3	3	100.0	0	0	0.0	0	0	0.0
Go-cart / golf cart	1	0	0.0	0	0	0.0	0	0	0.0	0	0	0.0	1	0	0.0	0	0	0.0
Snowmobile	3	3	100.0	0	0	0.0	2	2	100.0	0	0	0.0	0	0	0.0	1	1	100.0
Off-Road Vehicle - ORV / All-Terrain Vehicle - ATV	10	1	10.0	1	0	0.0	3	0	0.0	3	1	33.3	1	0	0.0	2	0	0.0
Other	14	8	57.1	0	0	0.0	0	0	0.0	0	0	0.0	0	0	0.0	11	8	72.7
Truck/bus over 10,000 lbs.	79	69	87.3	0	0	0.0	1	1	100.0	1	1	100.0	5	2	40.0	69	65	94.2
Unknown	27	0	0.0	0	0	0.0	0	0	0.0	0	0	0.0	0	0	0.0	0	0	0.0
<b>Total</b>	<b>2,562</b>	<b>2,213</b>	<b>86.4</b>	<b>12</b>	<b>5</b>	<b>41.7</b>	<b>39</b>	<b>26</b>	<b>66.7</b>	<b>84</b>	<b>66</b>	<b>78.6</b>	<b>179</b>	<b>158</b>	<b>88.3</b>	<b>2,128</b>	<b>1,958</b>	<b>92.0</b>

Note: Restraint Use includes shoulder belt only used, lap belt only used, both lap and shoulder belts used, child restraint used, restraint failure, and helmet worn.

## 2017 - Restraints Worn Among Vehicle Drivers and Injured Passengers by Age

Age Group	Total Occupants			Fatalities			A - Suspected Serious			B - Suspected Minor			C - Possible Injury			No Injury		
	Total	Used Restraint	%	Total	Used Restraint	%	Total	Used Restraint	%	Total	Used Restraint	%	Total	Used Restraint	%	Total	Used Restraint	%
0 - 15	26	22	84.6	0	0	0.0	1	1	100.0	8	8	100.0	13	10	76.9	4	3	75.0
16 - 20	300	270	90.0	0	0	0.0	8	6	75.0	23	20	87.0	23	22	95.7	245	222	90.6
21 - 24	190	170	89.5	1	1	100.0	0	0	0.0	9	6	66.7	8	6	75.0	170	157	92.4
25 - 64	1,531	1,394	91.1	5	2	40.0	23	14	60.9	36	24	66.7	108	97	89.8	1,355	1,257	92.8
65 +	402	357	88.8	6	2	33.3	7	5	71.4	8	8	100.0	27	23	85.2	354	319	90.1
Unknown	113	0	0.0	0	0	0.0	0	0	0.0	0	0	0.0	0	0	0.0	0	0	0.0
<b>Total</b>	<b>2,562</b>	<b>2,213</b>	<b>86.4</b>	<b>12</b>	<b>5</b>	<b>41.7</b>	<b>39</b>	<b>26</b>	<b>66.7</b>	<b>84</b>	<b>66</b>	<b>78.6</b>	<b>179</b>	<b>158</b>	<b>88.3</b>	<b>2,128</b>	<b>1,958</b>	<b>92.0</b>

Note: Restraint Use includes shoulder belt only used, lap belt only used, both lap and shoulder belts used, child restraint used, restraint failure, and helmet worn.



## 5-Year Trend - Restraint Use Among Drivers

Restraint Use	2013			2014			2015			2016			2017		
	Drivers	Fatal Drivers	Injured Drivers	Drivers	Fatal Drivers	Injured Drivers	Drivers	Fatal Drivers	Injured Drivers	Drivers	Fatal Drivers	Injured Drivers	Drivers	Fatal Drivers	Injured Drivers
No belts available	30	0	5	15	0	1	10	0	1	7	0	0	8	0	3
Shoulder belt only used	0	0	0	2	0	0	8	0	0	5	0	0	15	0	1
Lap belt only used	10	0	1	8	0	0	1	0	0	4	0	2	3	0	0
Both lap & shoulder belts used	2,503	1	215	2,377	2	211	1,995	1	177	1,929	1	188	2,118	4	178
No belts used	25	2	7	25	1	14	17	1	7	17	1	11	22	2	12
Child restraint used	0	0	0	0	0	0	0	0	0	0	0	0	0	0	0
Child restraint not used, unavailable or improper use	0	0	0	0	0	0	0	0	0	0	0	0	0	0	0
Restraint failure	3	0	0	2	0	0	2	0	0	0	0	0	2	0	0
Restraint use unknown	63	1	6	38	0	8	47	0	9	133	0	8	285	0	11
Helmet worn	15	0	13	25	0	16	24	0	19	24	0	22	17	0	14
Helmet not worn	15	1	8	9	0	7	8	1	7	15	1	12	12	2	8
Helmet use unknown	1	0	1	4	0	3	4	0	3	1	0	1	3	1	1
Uncoded & errors	173	0	1	162	0	1	116	0	0	49	0	0	0	0	0
<b>Total</b>	<b>2,838</b>	<b>5</b>	<b>257</b>	<b>2,667</b>	<b>3</b>	<b>261</b>	<b>2,232</b>	<b>3</b>	<b>223</b>	<b>2,184</b>	<b>3</b>	<b>244</b>	<b>2,485</b>	<b>9</b>	<b>228</b>

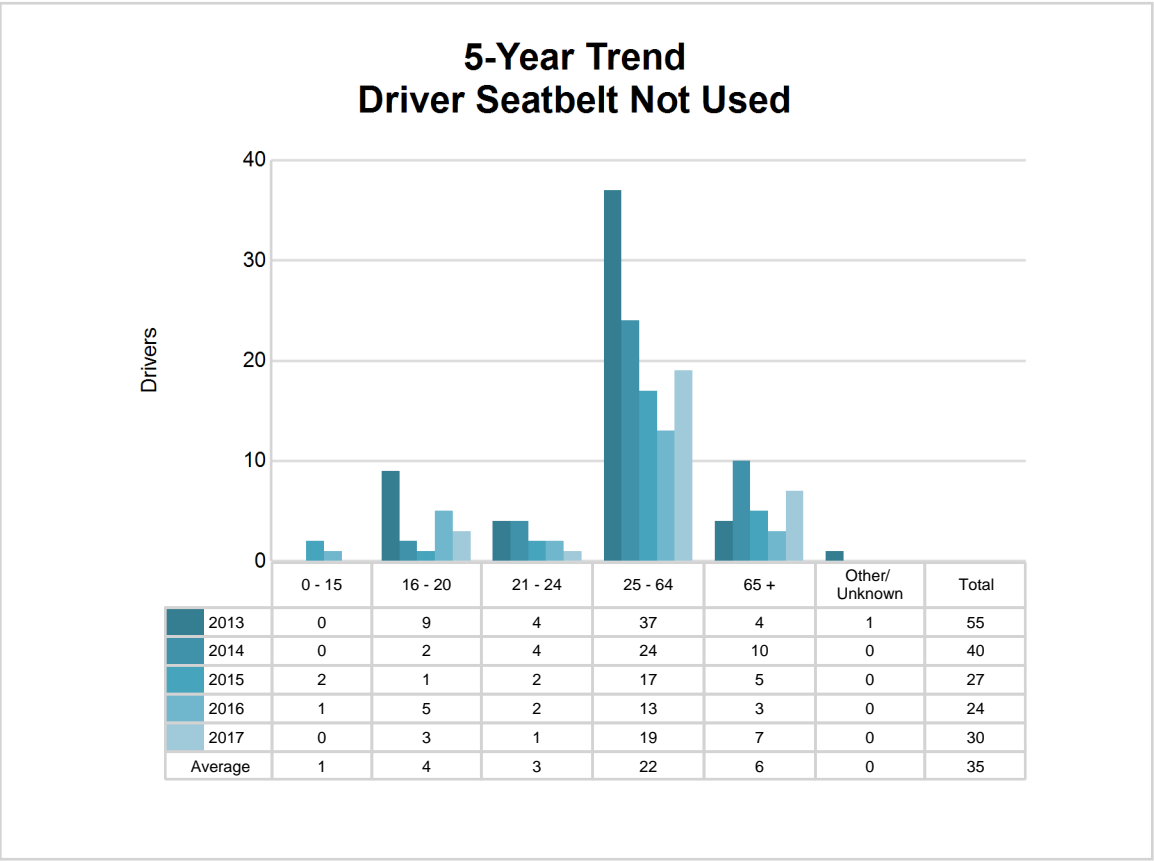
## 5-Year Trend - Restraint Use Among Drivers Coded Drinking

Restraint Use	2013			2014			2015			2016			2017		
	Drivers	Fatal Drivers	Injured Drivers	Drivers	Fatal Drivers	Injured Drivers	Drivers	Fatal Drivers	Injured Drivers	Drivers	Fatal Drivers	Injured Drivers	Drivers	Fatal Drivers	Injured Drivers
No belts available	1	0	0	0	0	0	0	0	0	0	0	0	1	0	1
Shoulder belt only used	0	0	0	0	0	0	0	0	0	0	0	0	0	0	0
Lap belt only used	0	0	0	0	0	0	0	0	0	0	0	0	0	0	0
Both lap & shoulder belts used	28	1	4	33	0	5	33	0	8	36	0	7	33	0	4
No belts used	4	1	2	6	0	6	2	1	1	3	0	3	5	0	3
Child restraint used	0	0	0	0	0	0	0	0	0	0	0	0	0	0	0
Child restraint not used, unavailable or improper use	0	0	0	0	0	0	0	0	0	0	0	0	0	0	0
Restraint failure	1	0	0	0	0	0	0	0	0	0	0	0	0	0	0
Restraint use unknown	17	1	2	12	0	4	10	0	3	10	0	4	17	0	4
Helmet worn	0	0	0	0	0	0	2	0	2	0	0	0	1	0	1
Helmet not worn	2	0	2	2	0	1	3	1	2	1	0	1	1	0	1
Helmet use unknown	0	0	0	0	0	0	1	0	1	0	0	0	1	1	0
Uncoded & errors	0	0	0	1	0	0	0	0	0	0	0	0	0	0	0
<b>Total</b>	<b>53</b>	<b>3</b>	<b>10</b>	<b>54</b>	<b>0</b>	<b>16</b>	<b>51</b>	<b>2</b>	<b>17</b>	<b>50</b>	<b>0</b>	<b>15</b>	<b>59</b>	<b>1</b>	<b>14</b>

5-Year Trend - Seatbelt Not Used Among Drivers by Age

Age Group	2013			2014			2015			2016			2017		
	Drivers	Fatal Drivers	Injured Drivers	Drivers	Fatal Drivers	Injured Drivers	Drivers	Fatal Drivers	Injured Drivers	Drivers	Fatal Drivers	Injured Drivers	Drivers	Fatal Drivers	Injured Drivers
0 - 15	0	0	0	0	0	0	2	0	1	1	0	1	0	0	0
16 - 20	9	0	2	2	0	2	1	1	0	5	0	4	3	0	3
21 - 24	4	0	2	4	0	2	2	0	1	2	0	0	1	0	1
25 - 64	37	2	7	24	1	10	17	0	4	13	0	4	19	0	10
65 +	4	0	1	10	0	1	5	0	2	3	1	2	7	2	1
Unknown	1	0	0	0	0	0	0	0	0	0	0	0	0	0	0
Total	55	2	12	40	1	15	27	1	8	24	1	11	30	2	15

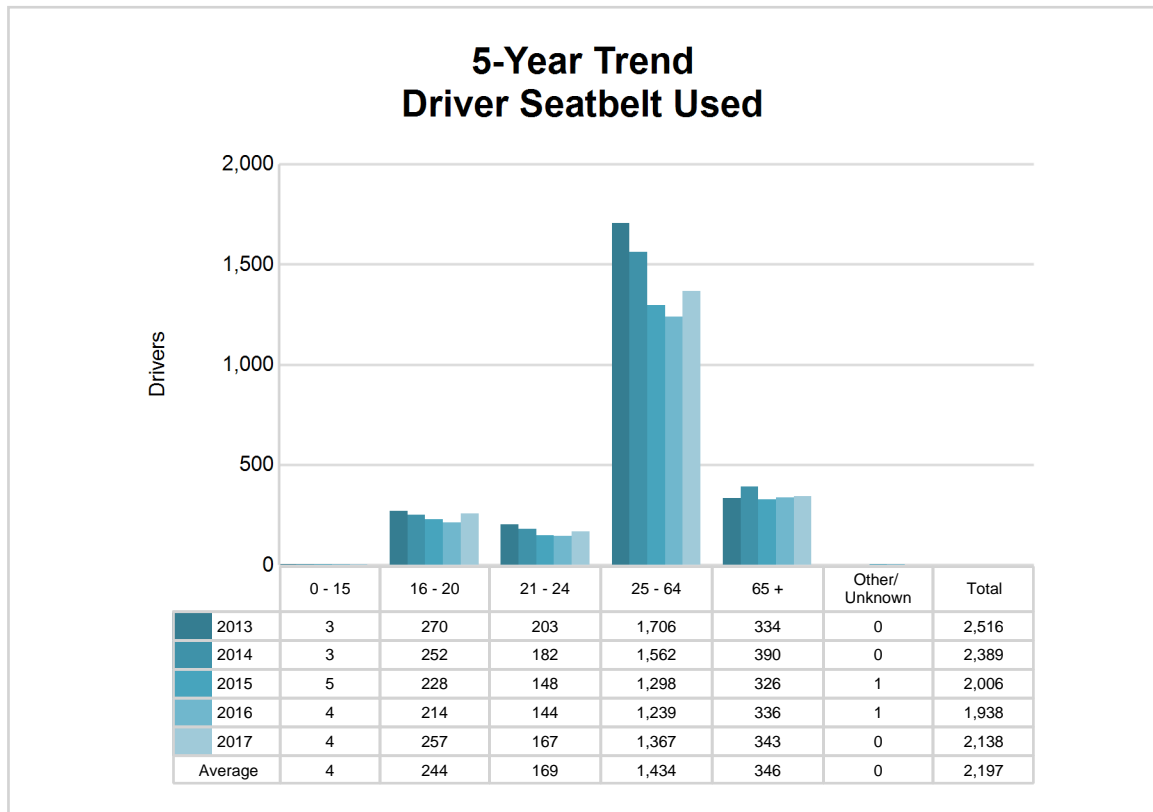
Note: Seatbelt Not Used includes no belts available or no belts used.



## 5-Year Trend - Seatbelt Used Among Drivers by Age

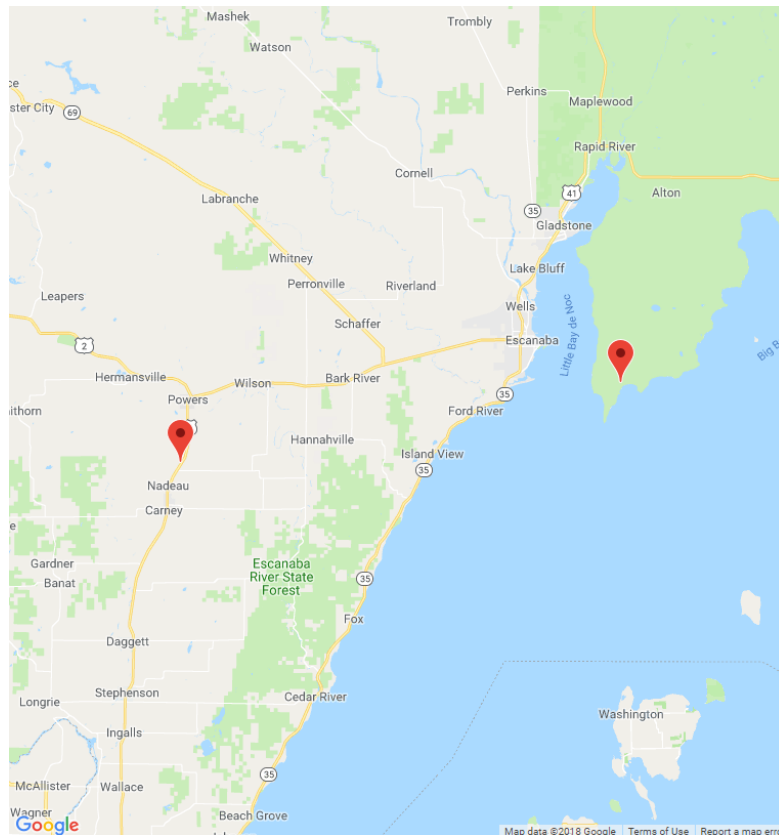
Age Group	2013			2014			2015			2016			2017		
	Drivers	Fatal Drivers	Injured Drivers	Drivers	Fatal Drivers	Injured Drivers	Drivers	Fatal Drivers	Injured Drivers	Drivers	Fatal Drivers	Injured Drivers	Drivers	Fatal Drivers	Injured Drivers
0 - 15	3	0	1	3	0	0	5	0	0	4	0	2	4	0	1
16 - 20	270	0	24	252	0	31	228	0	26	214	0	28	257	0	35
21 - 24	203	0	23	182	0	10	148	0	12	144	0	13	167	1	9
25 - 64	1,706	0	134	1,562	0	140	1,298	1	104	1,239	1	118	1,367	2	111
65 +	334	1	34	390	2	30	326	0	35	336	0	29	343	1	23
Unknown	0	0	0	0	0	0	1	0	0	1	0	0	0	0	0
<b>Total</b>	<b>2,516</b>	<b>1</b>	<b>216</b>	<b>2,389</b>	<b>2</b>	<b>211</b>	<b>2,006</b>	<b>1</b>	<b>177</b>	<b>1,938</b>	<b>1</b>	<b>190</b>	<b>2,138</b>	<b>4</b>	<b>179</b>

Note: Seatbelt Used includes shoulder belt only used, lap belt only used, both lap and shoulder belts used, and restraint failure.



## 5-Year Trend - Drivers in Crashes by Hazardous Action

Hazardous Action	2013		2014		2015		2016		2017	
	Total Drivers in Crashes	Drivers in Fatal Crashes	Total Drivers in Crashes	Drivers in Fatal Crashes	Total Drivers in Crashes	Drivers in Fatal Crashes	Total Drivers in Crashes	Drivers in Fatal Crashes	Total Drivers in Crashes	Drivers in Fatal Crashes
None	1,830	6	1,594	5	1,371	2	1,303	3	1,487	7
Speed too fast	189	1	224	1	116	1	155	0	171	2
Speed too slow	1	0	3	0	2	0	1	0	1	0
Failed to yield	206	0	237	2	181	0	183	1	188	3
Disregard traffic control	49	1	48	1	33	2	37	0	27	0
Drove wrong way	2	0	0	0	1	0	3	0	1	0
Drove left of center	8	1	16	1	7	0	11	0	9	0
Improper passing	14	0	11	0	7	0	18	0	13	0
Improper lane use	29	0	53	0	34	0	37	0	25	0
Improper turn	19	0	19	0	15	1	12	0	29	0
Improper/no signal	4	0	6	0	8	0	0	0	4	0
Improper backing	75	0	68	0	69	0	58	0	48	0
Unable to stop in assured clear distance	178	0	192	0	190	0	164	1	198	2
Other	64	1	53	0	51	0	46	1	67	0
Unknown	34	0	28	0	35	0	39	0	63	1
Reckless driving	13	0	6	0	10	1	11	0	12	0
Careless/negligent driving	123	0	109	0	102	1	106	0	142	1
Uncoded & errors	0	0	0	0	0	0	0	0	0	0
<b>Total</b>	<b>2,838</b>	<b>10</b>	<b>2,667</b>	<b>10</b>	<b>2,232</b>	<b>8</b>	<b>2,184</b>	<b>6</b>	<b>2,485</b>	<b>16</b>



The picture above represents all 2017 alcohol-involved fatal crashes in Post 84.

In 2017, there were 61 alcohol-involved crashes in Post 84:

- 2 K - Fatal Crashes
- 7 A - Suspected Serious Injury Crashes
- 6 B - Suspected Minor Injury Crashes
- 5 C - Possible Injury Crashes
- 41 O - Property Damage Only/No Injury Crashes

### Office of Highway Safety Planning

---

Physical Address:  
7150 Harris Drive  
Dimondale, Michigan 48821

Mailing Address:  
P.O. Box 30634  
Lansing, Michigan 48909

Phone: (517) 284-3112  
Fax: (517) 284-3151

Find us on the web:  
[MichiganTrafficCrashFacts.org](http://MichiganTrafficCrashFacts.org)

