



2017

**MTCF**  
Michigan Traffic  
Crash Facts

# Michigan Traffic Crash Facts

## Reporting Criteria

Please pay particular attention to the wording when interpreting the three levels of data gathered for this report.

### Crash

The Crash Level analyzes data related to crash events and returns one result per crash.

Examples: Time, weather, and location.

### Units

The Units Level analyzes the experience of the units in the crash and returns one result per vehicle, driver, pedestrian, bicyclist, or train.

Examples: Vehicle type, driver condition, and unit events.

### People

The People Level analyzes the experience of the people involved in the crash and returns one result per occupant/person/party.

Examples: Age, injury severity, and seat belt or helmet use.

### **KABCO Injury Indicator:**

K = Killed

A = Suspected Serious Injury

B = Suspected Minor Injury

C = Possible Injury

O = No Injury

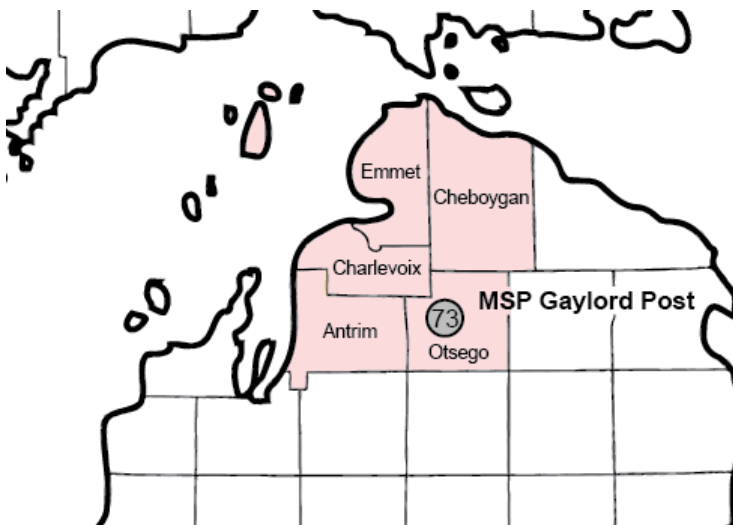
Property Damage Only (PDO)



## Michigan State Police (MSP) Post 73 - Gaylord

### 2017 Traffic Crash Data & 2013-2017 5-Year Trends

Post 73 is comprised of Antrim, Charlevoix, Cheboygan, Emmet, and Otsego counties. Trend tables for this report are based on those counties.



### Sources:

The crashes in this report occurred on public roadways in Michigan and resulted in injuries, fatalities, or property damage (with \$1,000 as a reporting threshold). The information was gathered from Michigan Traffic Crash Report Forms (UD-10) submitted by local police departments, sheriff's offices, and the Michigan State Police. Other related information was obtained from the departments of Transportation, State, and Community Health.

This page left intentionally blank

## MSP Post 73 - Gaylord

- There were 5,726 crashes in Post 73 during 2017. [Page 1]
- A total of 19 fatalities resulted from 16 fatal crashes in 2017 in Post 73. [Page 1]
- There were 1,012 injuries and 736 injury crashes. [Page 1]
- There were 4,974 property damage only crashes (no fatalities or injuries). [Page 1]
- December had the highest number of crashes (814). [Pages 1-2]
- July had the highest number of fatal crashes (4) and fatalities (5). [Pages 1-2]
- July had the highest number of injury crashes (94) and injuries (147). [Page 1]
- December had the highest number of property damage only crashes (724). [Page 1]
- Of all vehicles involved in fatal crashes, 4 (16.0%) were motorcycles. [Page 1]
- Friday was the day of the week with the highest number of crashes (948) and Saturday had the highest number of fatal crashes (5). [Pages 2-3]
- The 6:00 AM - 8:59 AM time period had the highest number of crashes (1,082). The 3:00 PM - 5:59 PM and Noon - 2:59 PM time periods had the highest number of fatal crashes (4). [Pages 5-6]
- During the period from 2013 to 2017, the highest number of deer crashes occurred in 2017 (2,516). The 6:00 AM - 8:59 AM time period consistently had the highest number of deer-involved crashes during the five-year period. There were fatal crashes involving deer in 2017. [Pages 7-8]
- Emmet County (25.8%) had the highest number of crashes in Post 73 in 2017, followed by Charlevoix County (20.7%), and Cheboygan County (19.6%). [Page 8]
- Otsego County (36.8%) had the highest number of fatalities in Post 73 in 2017, followed by Antrim County (21.1%), and Charlevoix County and Cheboygan County (15.8%). [Page 8]
- The highest number of drivers in crashes (7,534) occurred during 2017 and the highest number of drivers coded drinking in crashes (207) occurred during 2017 within the five year period between 2013 and 2017. [Page 9]
- A total of 208 crashes involved alcohol in 2017. [Page 10]
- Alcohol-involved fatal crashes were the highest in 2013 and 2014 during the five-year period from 2013 to 2017 at 7. [Page 10]
- A total of 45 crashes, 3 fatal crashes, and 7 suspected serious injury crashes involved drugs in 2017. [Page 11]
- There were 6,960 drivers wearing seatbelts and 64 drivers not wearing seatbelts in crashes in 2017. Of the 64 drivers not wearing seat belts, 3 (4.7%) were killed and 23 (35.9%) were injured. [Pages 14-16]
- The most common hazardous action coded for drivers in 2017 in all crashes was speed too fast (1,071), while the most common hazardous action coded for drivers in fatal crashes was speed too fast (4). [Page 17]

# MSP Post 73 - Gaylord (continued)

## Post 73 Experience

In 2017:

There were 7,534 drivers involved in 5,726 motor vehicle crashes in MSP Post 73. Of those crashes, 16 were classified as fatal, resulting in 19 fatalities. An additional 1,012 persons were injured.

Post 73 experienced the highest number of motor vehicle crashes (814) in December, the highest number of fatal crashes (4) and the highest number of persons killed (5) in July.

Michigan driver statistics indicate 5.8 percent of licensed drivers in Post 73 were age 16-20, and 10.8 percent of drivers in crashes were also in that age group.

## 2017 - Crashes and Injuries by Month

Month	Crashes				Persons	
	Total	Fatal	Injury	Property Damage Only (PDO)	Fatalities	Injuries
January	512	2	61	449	3	102
February	459	0	52	407	0	62
March	351	0	35	316	0	48
April	254	1	38	215	1	57
May	346	2	51	293	2	71
June	423	1	66	356	1	83
July	449	4	94	351	5	147
August	411	0	84	327	0	112
September	417	2	53	362	2	67
October	590	1	63	526	2	86
November	700	2	50	648	2	63
December	814	1	89	724	1	114
<b>Total</b>	<b>5,726</b>	<b>16</b>	<b>736</b>	<b>4,974</b>	<b>19</b>	<b>1,012</b>

## 2017 - Driver Statistics

Age Group	Post 73			Driver Rates	
	2017 Population	Licensed Drivers	Drivers in Crashes	Per 10k Population	Per 10k Licensed
0 - 15	22,084	811	16	7.2	197.3
16 - 20	7,254	6,305	816	1,124.9	1,294.2
21 - 24	5,578	5,567	648	1,161.7	1,164.0
25 - 64	66,288	65,661	4,782	721.4	728.3
65 +	31,327	30,820	1,020	325.6	331.0
Unknown	0	0	252	--	--
<b>Total</b>	<b>132,531</b>	<b>109,164</b>	<b>7,534</b>	<b>568.5</b>	<b>690.2</b>

## 2017 - Vehicles in Crashes

Vehicle Type	Motor Vehicles		Fatal Crashes		Injury Crashes	PDO Crashes
	Number of Vehicles	% of Total	Number	% of Total	Number	Number
Passenger car, SUV, van	5,604	74.4	13	52.0	792	4,799
Motor home	75	1.0	0	0.0	6	69
Pickup truck	1,462	19.4	5	20.0	193	1,264
Small truck under 10,000 lbs. GVWR	67	0.9	0	0.0	14	53
Motorcycle	58	0.8	4	16.0	40	14
Moped / goped	10	0.1	0	0.0	8	2
Go-cart / golf cart	1	0.0	0	0.0	1	0
Snowmobile	24	0.3	0	0.0	20	4
Off-Road Vehicle - ORV / All-Terrain Vehicle - ATV	27	0.4	1	4.0	17	9
Other	25	0.3	0	0.0	4	21
Truck/bus over 10,000 lbs.	122	1.6	2	8.0	19	101
Unknown	59	0.8	0	0.0	3	56
<b>Total</b>	<b>7,534</b>	<b>100.0</b>	<b>25</b>	<b>100.0</b>	<b>1,117</b>	<b>6,392</b>

## 5-Year Trend - Crashes by Month

Month	2013		2014		2015		2016		2017	
	Total Crashes	Fatal Crashes	Total Crashes	Fatal Crashes	Total Crashes	Fatal Crashes	Total Crashes	Fatal Crashes	Total Crashes	Fatal Crashes
January	553	0	634	3	577	1	476	1	512	2
February	415	3	440	0	378	0	420	0	459	0
March	332	0	479	0	343	0	291	0	351	0
April	325	0	295	0	276	0	315	0	254	1
May	281	1	302	1	332	2	356	0	346	2
June	409	3	361	2	476	2	453	2	423	1
July	376	2	365	2	410	4	459	4	449	4
August	346	3	341	1	403	1	402	2	411	0
September	348	2	305	3	331	3	381	2	417	2
October	480	1	497	1	454	0	397	4	590	1
November	680	1	773	1	618	1	634	2	700	2
December	688	2	606	0	436	0	636	2	814	1
<b>Total</b>	<b>5,233</b>	<b>18</b>	<b>5,398</b>	<b>14</b>	<b>5,034</b>	<b>14</b>	<b>5,220</b>	<b>19</b>	<b>5,726</b>	<b>16</b>

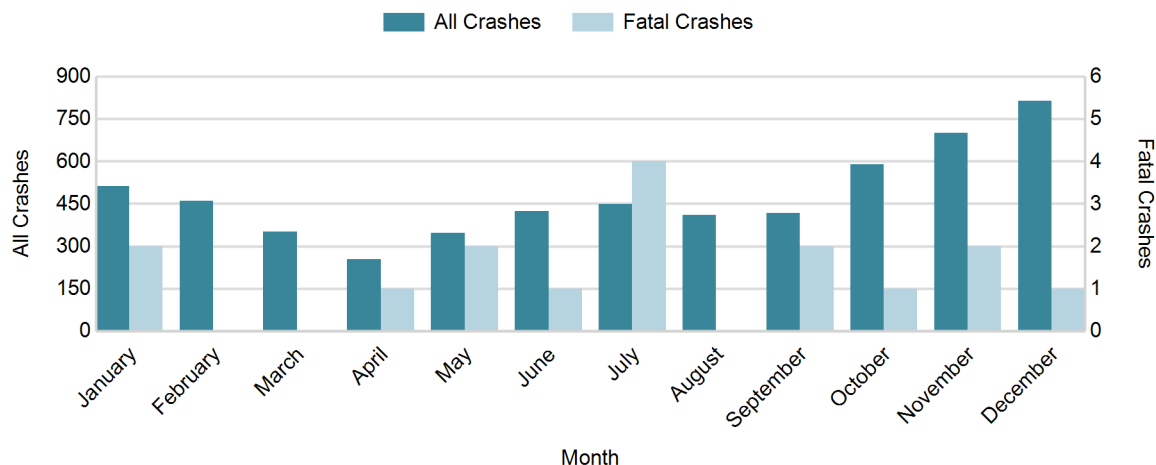
Note: † Indicates that the highest number of total crashes reported in the 5-year period occurred in the same month

## 5-Year Trend - Crashes by Day of Week

Day	2013		2014		2015		2016		2017	
	Total Crashes	Fatal Crashes	Total Crashes	Fatal Crashes	Total Crashes	Fatal Crashes	Total Crashes	Fatal Crashes	Total Crashes	Fatal Crashes
Monday	742	3	753	3	753	3	719	1	807	2
Tuesday	737	0	779	1	676	2	728	4	835	2
Wednesday	784	2	843	3	761	4	803	4	869	1
Thursday	829	2	812	1	781	2	805	3	844	4
Friday	844 †	4	925 †	3	834 †	1	869 †	2	948 †	0
Saturday	698	4	660	2	647	1	697	3	778	5
Sunday	599	3	626	1	582	1	599	2	645	2
<b>Total</b>	<b>5,233</b>	<b>18</b>	<b>5,398</b>	<b>14</b>	<b>5,034</b>	<b>14</b>	<b>5,220</b>	<b>19</b>	<b>5,726</b>	<b>16</b>

Note: † Indicates that the highest number of total crashes reported in the 5-year period occurred on the same day of the week

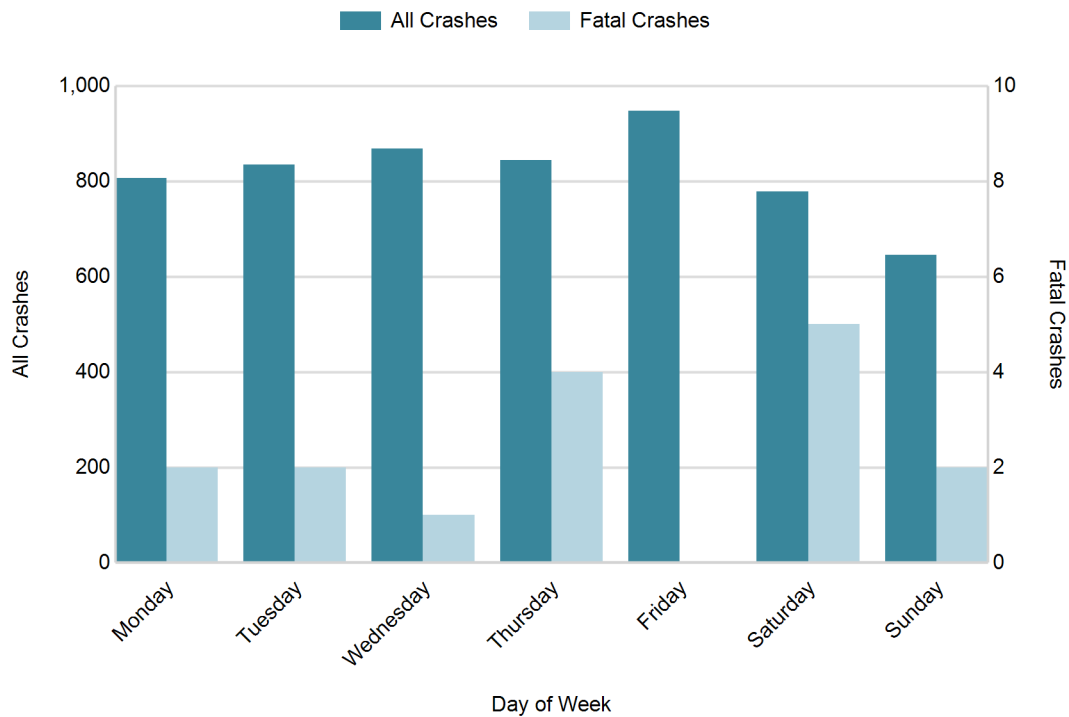
## 2017 Crashes by Month



## 2017 - Crashes by Day of Week

Day	All Crashes		Fatal Crashes		Injury Crashes			PDO Crashes
	Number	% of Total	Number	% of Fatal	A	B	C	Number
Monday	807	14.1	2	12.5	15	35	49	706
Tuesday	835	14.6	2	12.5	12	34	47	740
Wednesday	869	15.2	1	6.3	10	29	54	775
Thursday	844	14.7	4	25.0	11	38	46	745
Friday	948	16.6	0	0.0	14	64	63	807
Saturday	778	13.6	5	31.3	20	43	50	660
Sunday	645	11.3	2	12.5	23	33	46	541
<b>Total</b>	<b>5,726</b>	<b>100.0</b>	<b>16</b>	<b>100.0</b>	<b>105</b>	<b>276</b>	<b>355</b>	<b>4,974</b>

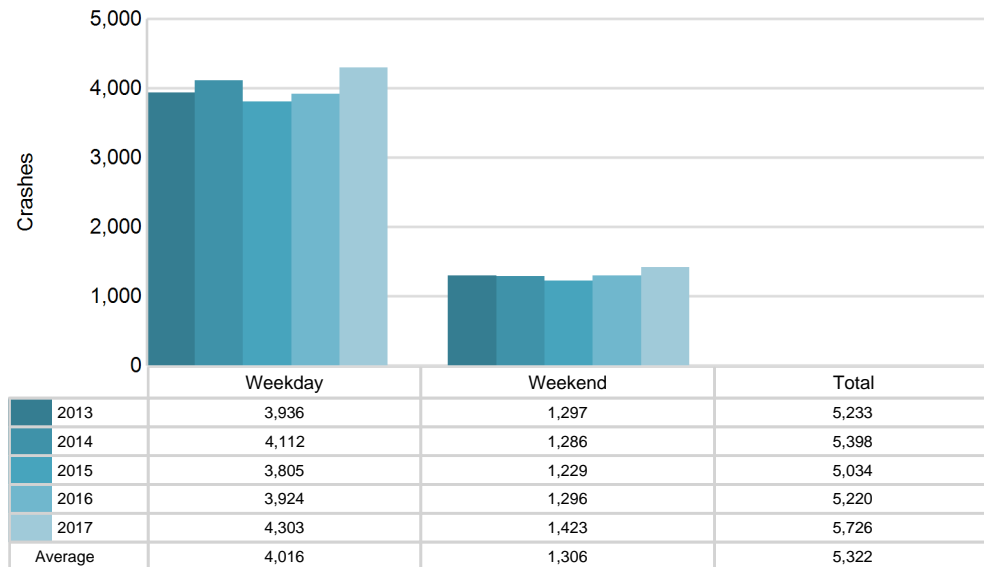
## 2017 Day of Week and Severity



## 5-Year Trend - Crashes by Weekday and Weekend

Portion of Week	2013		2014		2015		2016		2017	
	Total Crashes	Fatal Crashes	Total Crashes	Fatal Crashes	Total Crashes	Fatal Crashes	Total Crashes	Fatal Crashes	Total Crashes	Fatal Crashes
Weekday	3,936	11	4,112	11	3,805	12	3,924	14	4,303	9
Weekend	1,297	7	1,286	3	1,229	2	1,296	5	1,423	7
<b>Total</b>	<b>5,233</b>	<b>18</b>	<b>5,398</b>	<b>14</b>	<b>5,034</b>	<b>14</b>	<b>5,220</b>	<b>19</b>	<b>5,726</b>	<b>16</b>

## 5-Year Crash Trends by Weekday (Monday - Friday) and Weekend (Saturday & Sunday)

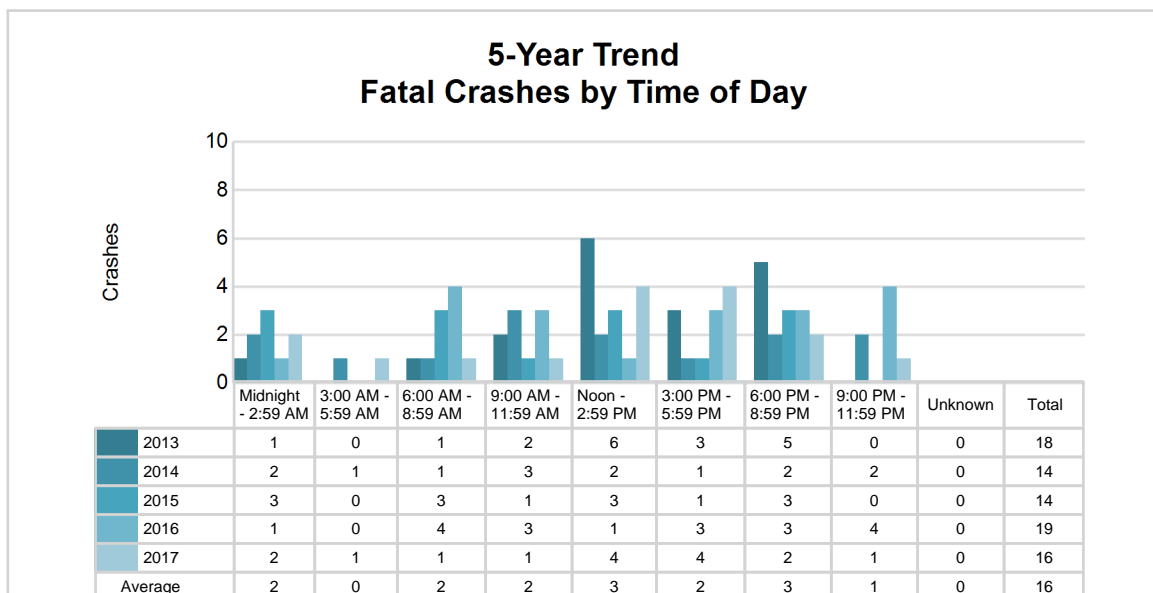
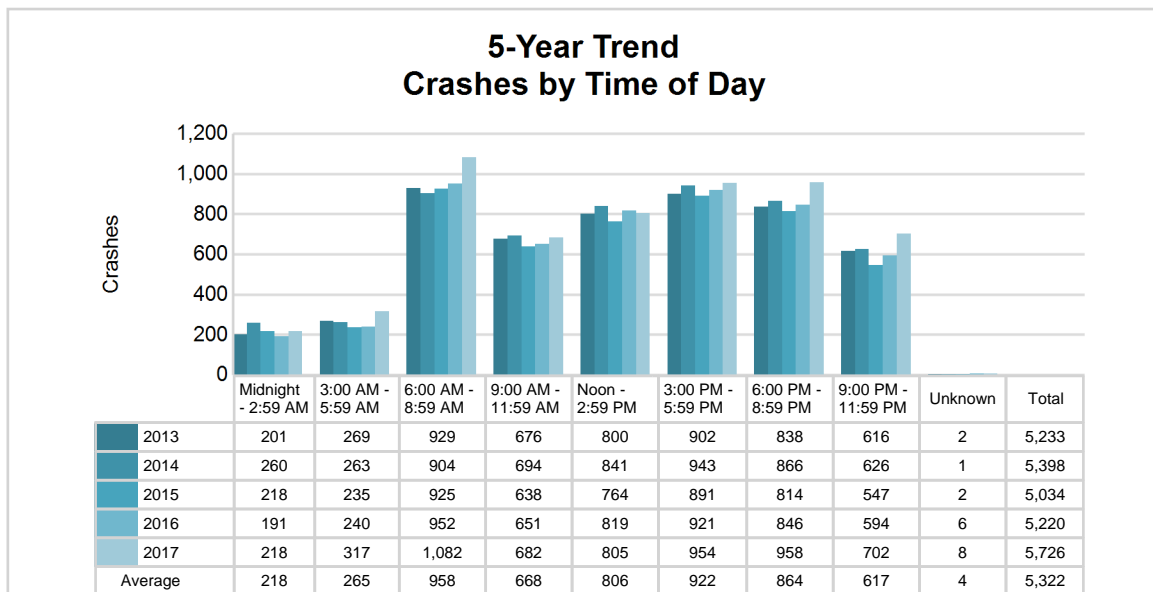


# MSP Post 73 - Gaylord (continued)

## 5-Year Trend - Crashes by Time of Day

Time of Day	2013		2014		2015		2016		2017	
	Total Crashes	Fatal Crashes	Total Crashes	Fatal Crashes	Total Crashes	Fatal Crashes	Total Crashes	Fatal Crashes	Total Crashes	Fatal Crashes
Midnight - 2:59 AM	201	1	260	2	218	3	191	1	218	2
3:00 AM - 5:59 AM	269	0	263	1	235	0	240	0	317	1
6:00 AM - 8:59 AM	929	1	904	1	925	3	952	4	1,082	1
9:00 AM - 11:59 AM	676	2	694	3	638	1	651	3	682	1
Noon - 2:59 PM	800	6	841	2	764	3	819	1	805	4
3:00 PM - 5:59 PM	902	3	943	1	891	1	921	3	954	4
6:00 PM - 8:59 PM	838	5	866	2	814	3	846	3	958	2
9:00 PM - 11:59 PM	616	0	626	2	547	0	594	4	702	1
Unknown	2	0	1	0	2	0	6	0	8	0
<b>Total</b>	<b>5,233</b>	<b>18</b>	<b>5,398</b>	<b>14</b>	<b>5,034</b>	<b>14</b>	<b>5,220</b>	<b>19</b>	<b>5,726</b>	<b>16</b>

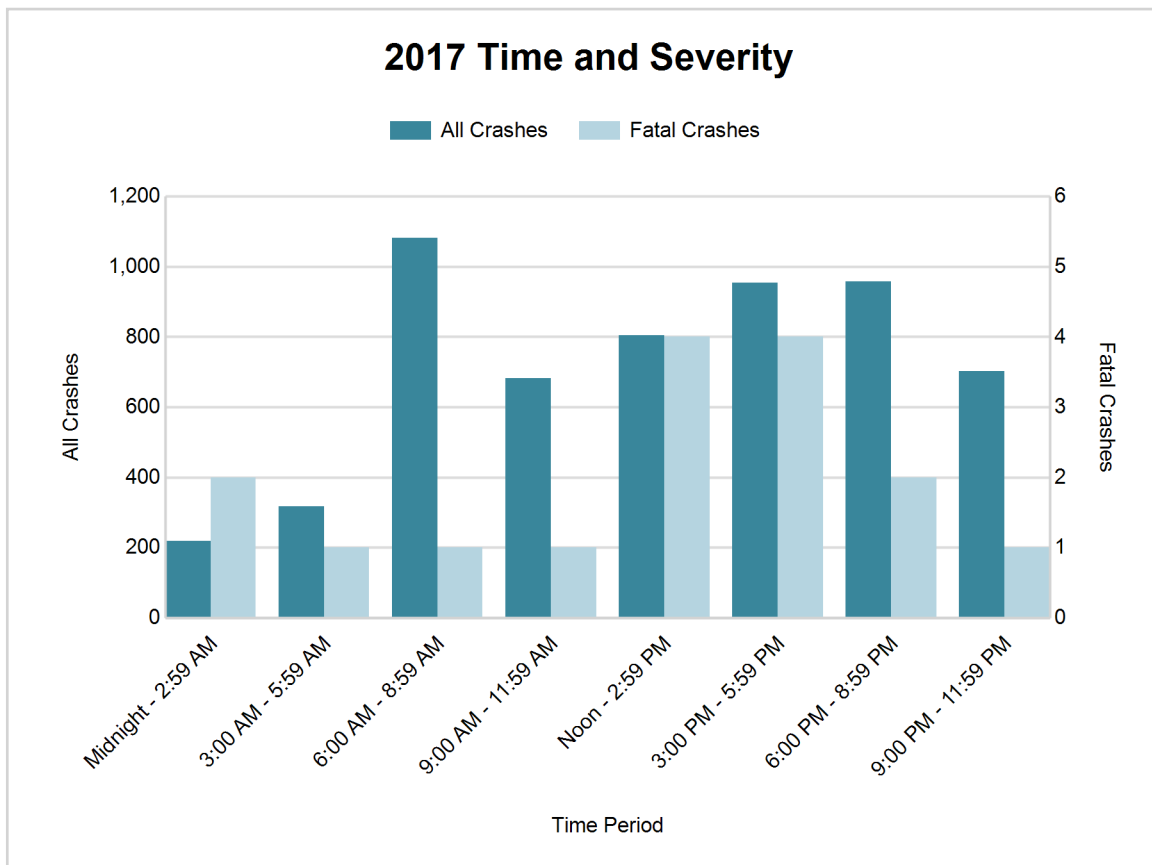
Note: † Indicates that the highest number of total crashes reported in the 5-year period occurred in the same time period





## 2017 - Time and Severity

Time of Day	All Crashes		Fatal Crashes		Injury Crashes			PDO Crashes
	Number	% of Total	Number	% of Fatal	A	B	C	Number
Midnight - 2:59 AM	218	3.8	2	12.5	7	14	19	176
3:00 AM - 5:59 AM	317	5.5	1	6.3	4	4	12	296
6:00 AM - 8:59 AM	1,082	18.9	1	6.3	4	23	55	999
9:00 AM - 11:59 AM	682	11.9	1	6.3	14	27	57	583
Noon - 2:59 PM	805	14.1	4	25.0	16	60	67	658
3:00 PM - 5:59 PM	954	16.7	4	25.0	28	79	78	765
6:00 PM - 8:59 PM	958	16.7	2	12.5	21	38	44	853
9:00 PM - 11:59 PM	702	12.3	1	6.3	10	31	22	638
Unknown	8	0.1	0	0.0	1	0	1	6
<b>Total</b>	<b>5,726</b>	<b>100.0</b>	<b>16</b>	<b>100.0</b>	<b>105</b>	<b>276</b>	<b>355</b>	<b>4,974</b>

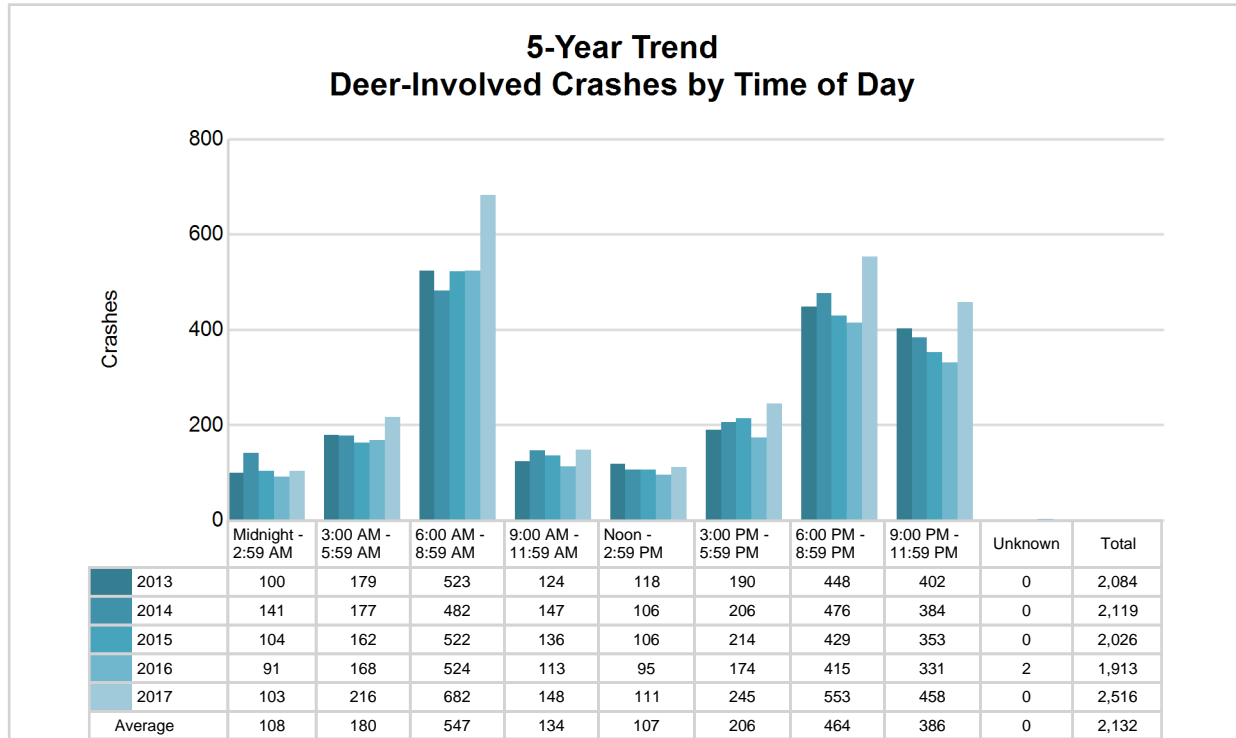


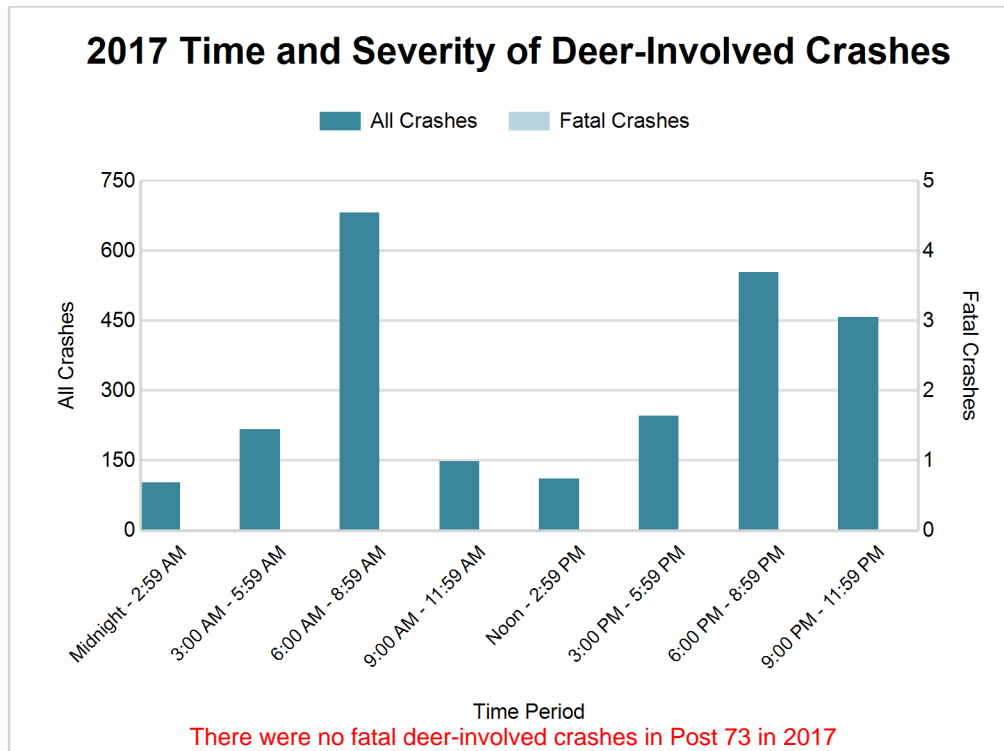
# MSP Post 73 - Gaylord (continued)

## 5-Year Trend - Deer-Involved Crashes by Time of Day

Time of Day	2013		2014		2015		2016		2017	
	Total Crashes	Fatal Crashes	Total Crashes	Fatal Crashes	Total Crashes	Fatal Crashes	Total Crashes	Fatal Crashes	Total Crashes	Fatal Crashes
Midnight - 2:59 AM	100	0	141	0	104	0	91	0	103	0
3:00 AM - 5:59 AM	179	0	177	0	162	0	168	0	216	0
6:00 AM - 8:59 AM	523 †	0	482 †	0	522 †	0	524 †	0	682 †	0
9:00 AM - 11:59 AM	124	0	147	0	136	0	113	0	148	0
Noon - 2:59 PM	118	0	106	0	106	0	95	0	111	0
3:00 PM - 5:59 PM	190	0	206	0	214	0	174	0	245	0
6:00 PM - 8:59 PM	448	0	476	0	429	0	415	0	553	0
9:00 PM - 11:59 PM	402	0	384	0	353	0	331	0	458	0
Unknown	0	0	0	0	0	0	2	0	0	0
<b>Total</b>	<b>2,084</b>	<b>0</b>	<b>2,119</b>	<b>0</b>	<b>2,026</b>	<b>0</b>	<b>1,913</b>	<b>0</b>	<b>2,516</b>	<b>0</b>

Note: † Indicates that the highest number of total crashes reported in the 5-year period occurred in the same time period





#### 2017 - Reported Motor Vehicle Crashes by County

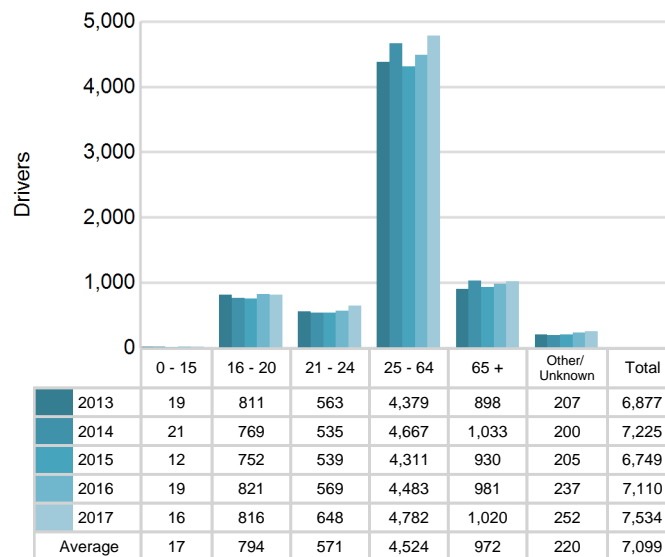
County	Crashes											Persons	
	Total	Fatal	Injury	Property Damage	Inter-state	US Route	State Route	Local Street	Alcohol-Involved	Drug-Involved	Deer-Involved	Fatalities	Injuries
Antrim	971	3	121	847	0	221	184	557	43	9	498	4	161
Charlevoix	1,187	3	124	1,060	0	317	230	638	45	8	607	3	170
Cheboygan	1,125	3	147	975	274	68	251	528	29	6	555	3	199
Emmet	1,476	2	197	1,277	5	457	142	869	53	10	538	2	276
Otsego	967	5	147	815	224	0	281	455	38	12	318	7	206
<b>Total</b>	<b>5,726</b>	<b>16</b>	<b>736</b>	<b>4,974</b>	<b>503</b>	<b>1,063</b>	<b>1,088</b>	<b>3,047</b>	<b>208</b>	<b>45</b>	<b>2,516</b>	<b>19</b>	<b>1,012</b>

# MSP Post 73 - Gaylord (continued)

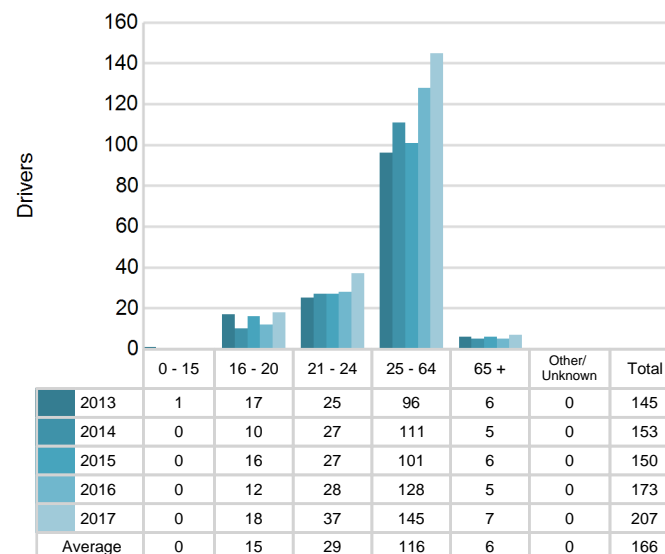
## 5-Year Trend - Drivers in Crashes Coded Drinking by Driver Age

Driver Age	2013		2014		2015		2016		2017	
	Total Drivers in Crashes	Total Drivers Coded Drinking	Total Drivers in Crashes	Total Drivers Coded Drinking	Total Drivers in Crashes	Total Drivers Coded Drinking	Total Drivers in Crashes	Total Drivers Coded Drinking	Total Drivers in Crashes	Total Drivers Coded Drinking
0 - 15	19	1	21	0	12	0	19	0	16	0
16 - 20	811	17	769	10	752	16	821	12	816	18
21 - 24	563	25	535	27	539	27	569	28	648	37
25 - 64	4,379	96	4,667	111	4,311	101	4,483	128	4,782	145
65 +	898	6	1,033	5	930	6	981	5	1,020	7
Unknown	207	0	200	0	205	0	237	0	252	0
<b>Total</b>	<b>6,877</b>	<b>145</b>	<b>7,225</b>	<b>153</b>	<b>6,749</b>	<b>150</b>	<b>7,110</b>	<b>173</b>	<b>7,534</b>	<b>207</b>

**5-Year Trend  
Total Drivers in Crashes by Age**



**5-Year Trend  
Total Drivers Coded Drinking by Age**



### 2017 - Bodily Alcohol Concentration (BAC) Results Among All Vehicle Drivers in Alcohol-Involved Crashes by Age

Age Group	Drivers				BAC Result Range for Drivers Coded Drinking				
	Total Drivers in Alcohol-Involved Crashes	Total Drivers Tested in all Crashes	Total Drivers Coded Drinking, Tested	Total Drivers Coded Drinking	BAC = 0.00	BAC 0.01 g/dL to 0.07 g/dL	BAC 0.08 g/dL to 0.16 g/dL	BAC 0.17 g/dL and Above	BAC Not Reported
0 - 15	0	0	0	0	0	0	0	0	0
16 - 20	22	22	15	18	1	3	5	0	9
21 - 24	42	37	32	37	0	4	13	6	14
25 - 64	176	144	120	145	2	17	42	20	64
65 +	13	10	7	7	0	1	1	1	4
Unknown	7	0	0	0	0	0	0	0	0
<b>Total</b>	<b>260</b>	<b>213</b>	<b>174</b>	<b>207</b>	<b>3</b>	<b>25</b>	<b>61</b>	<b>27</b>	<b>91</b>

Notes: BAC measured in grams (g) per deciliter (dL).

BAC may not be reported if drivers are not tested or if the results are not available immediately (as in the case of a blood test).

A driver may be coded by the officer as drinking even though no test is administered.

### Alcohol-Involved Crashes

In 2017, there were 260 drivers in alcohol-involved crashes; 207 (79.6%) of those drivers were coded as had-been-drinking by the officer on the crash form.

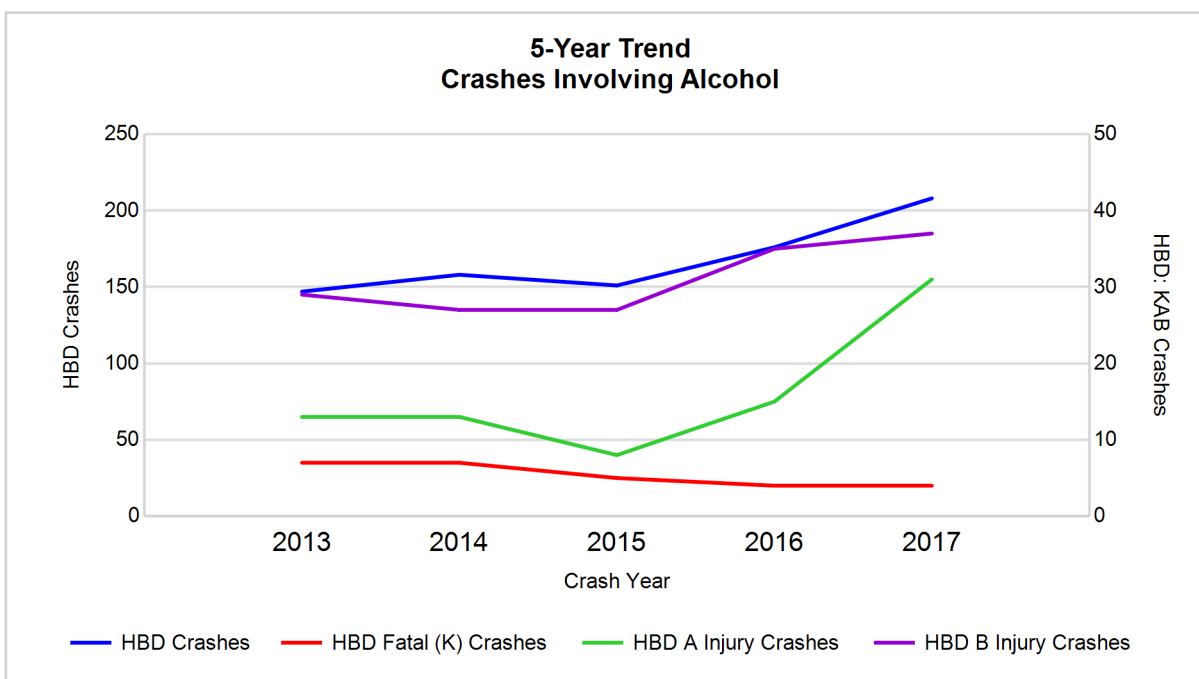
- 88 (42.5%) of the 207 drivers had a blood alcohol concentration (BAC) of 0.08 g/dL (grams per deciliter) or greater, and 27 (30.7%) of the 88 drivers had a BAC at or above 0.17 g/dL.
- 174 (84.1%) of the 207 drivers were coded as had-been-drinking and were tested for alcohol consumption.

### 5-Year Trend - Crashes Involving Alcohol

Year	All Crashes	HBD Crashes	% HBD	Fatal Crashes	HBD Fatal Crashes	% HBD	A Injury Crashes	HBD A Injury Crashes	% HBD	B Injury Crashes	HBD B Injury Crashes	% HBD
2013	5,233	147	2.8	18	7	38.9	82	13	15.9	257	29	11.3
2014	5,398	158	2.9	14	7	50.0	79	13	16.5	235	27	11.5
2015	5,034	151	3.0	14	5	35.7	70	8	11.4	229	27	11.8
2016	5,220	176	3.4	19	4	21.1	105	15	14.3	255	35	13.7
2017	5,726**	208**	3.6**	16	4	25.0	105	31**	29.5**	276**	37**	13.4

Note: \* Indicates that the most recent year is the lowest number or percentage reported in the 5-year period in that column

\*\* Indicates that the most recent year is the highest number or percentage reported in the 5-year period in that column



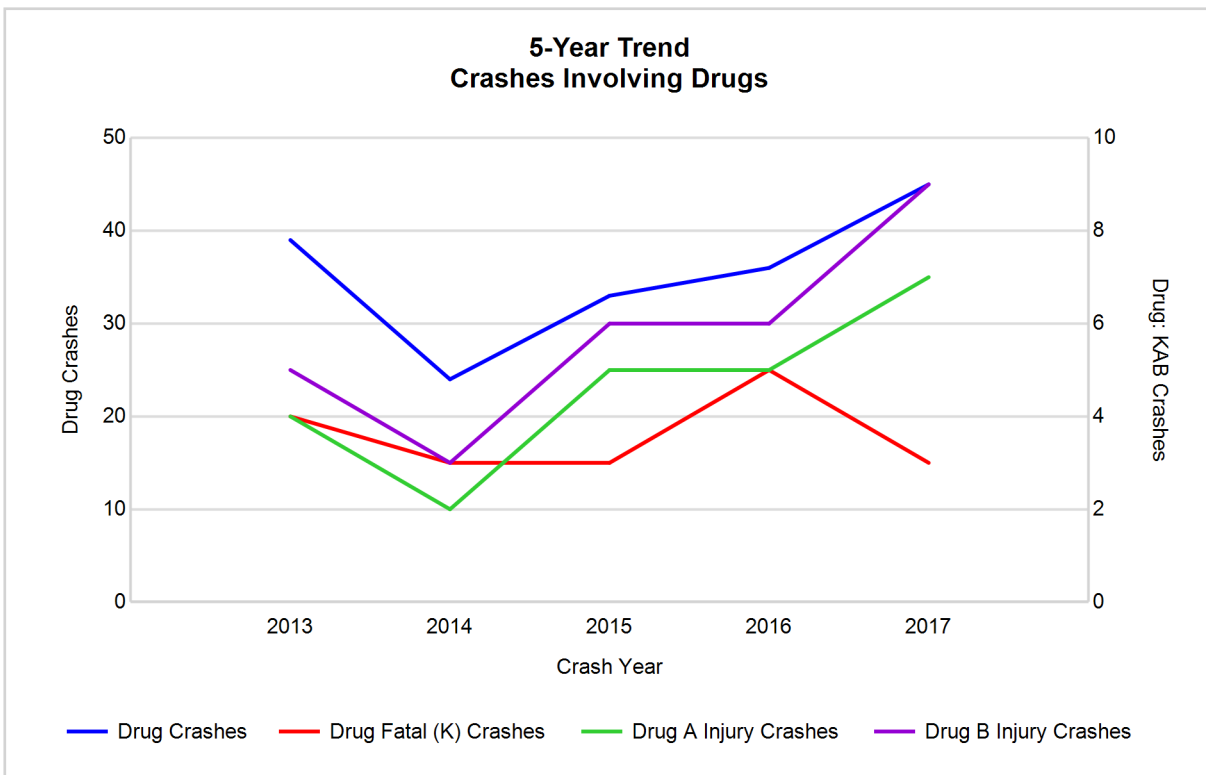
Note: Had-Been-Drinking (HBD)

## 5-Year Trend - Crashes Involving Drugs

Year	All Crashes	Drug Crashes	% Drug	Fatal Crashes	Drug Fatal Crashes	% Drug	A Injury Crashes	Drug A Injury Crashes	% Drug	B Injury Crashes	Drug B Injury Crashes	% Drug
2013	5,233	39	0.7	18	4	22.2	82	4	4.9	257	5	1.9
2014	5,398	24	0.4	14	3	21.4	79	2	2.5	235	3	1.3
2015	5,034	33	0.7	14	3	21.4	70	5	7.1	229	6	2.6
2016	5,220	36	0.7	19	5	26.3	105	5	4.8	255	6	2.4
2017	5,726**	45**	0.8**	16	3	18.8*	105	7**	6.7	276**	9**	3.3**

Note: \* Indicates that the most recent year is the lowest number or percentage reported in the 5-year period in that column

\*\* Indicates that the most recent year is the highest number or percentage reported in the 5-year period in that column

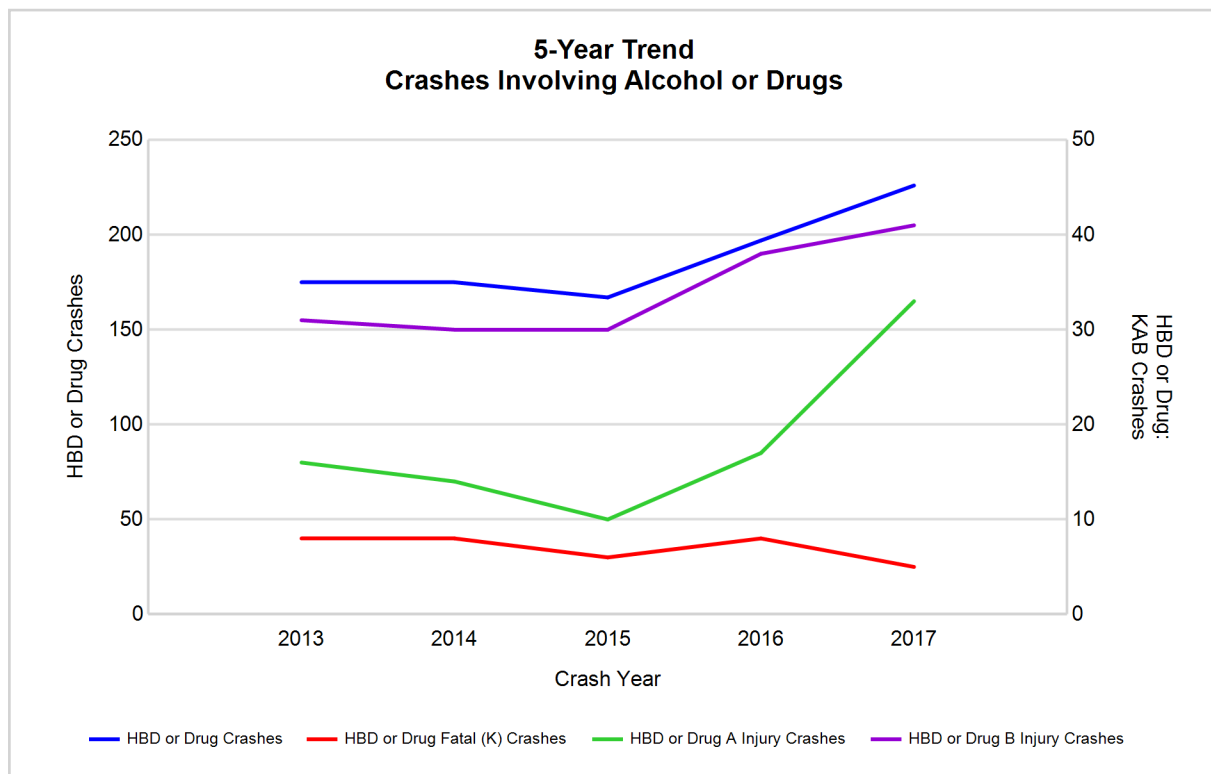


## 5-Year Trend - Crashes Involving Alcohol or Drugs

Year	All Crashes	HBD or Drug Crashes	% HBD or Drug	Fatal Crashes	HBD or Drug Fatal Crashes	% HBD or Drug	A Injury Crashes	HBD or Drug A Injury Crashes	% HBD or Drug	B Injury Crashes	HBD or Drug B Injury Crashes	% HBD or Drug
2013	5,233	175	3.3	18	8	44.4	82	16	19.5	257	31	12.1
2014	5,398	175	3.2	14	8	57.1	79	14	17.7	235	30	12.8
2015	5,034	167	3.3	14	6	42.9	70	10	14.3	229	30	13.1
2016	5,220	197	3.8	19	8	42.1	105	17	16.2	255	38	14.9
2017	5,726**	226**	3.9**	16	5*	31.3*	105	33**	31.4**	276**	41**	14.9

Note: \* Indicates that the most recent year is the lowest number or percentage reported in the 5-year period in that column

\*\* Indicates that the most recent year is the highest number or percentage reported in the 5-year period in that column



Note: Had-Been-Drinking (HBD)

## 2017 - Restraints Worn Among Vehicle Drivers and Injured Passengers by Vehicle Type

Vehicle Type	Total Occupants			Fatalities			A - Suspected Serious			B - Suspected Minor			C - Possible Injury			No Injury		
	Total	Used Restraint	%	Total	Used Restraint	%	Total	Used Restraint	%	Total	Used Restraint	%	Total	Used Restraint	%	Total	Used Restraint	%
Passenger car, SUV, van	5,803	5,506	94.9	7	6	85.7	71	59	83.1	250	234	93.6	398	383	96.2	4,883	4,778	97.8
Motor home	76	72	94.7	0	0	0.0	0	0	0.0	1	1	100.0	3	2	66.7	70	68	97.1
Pickup truck	1,506	1,422	94.4	5	3	60.0	21	17	81.0	49	39	79.6	81	77	95.1	1,305	1,271	97.4
Small truck under 10,000 lbs. GVWR	68	60	88.2	0	0	0.0	0	0	0.0	5	5	100.0	3	2	66.7	54	53	98.1
Motorcycle	69	53	76.8	5	4	80.0	15	9	60.0	19	17	89.5	12	11	91.7	18	12	66.7
Moped / goped	11	1	9.1	0	0	0.0	4	0	0.0	4	1	25.0	0	0	0.0	3	0	0.0
Go-cart / golf cart	1	0	0.0	0	0	0.0	1	0	0.0	0	0	0.0	0	0	0.0	0	0	0.0
Snowmobile	24	21	87.5	0	0	0.0	8	8	100.0	7	6	85.7	5	5	100.0	3	2	66.7
Off-Road Vehicle - ORV / All-Terrain Vehicle - ATV	34	15	44.1	1	0	0.0	8	3	37.5	12	7	58.3	1	0	0.0	11	5	45.5
Other	25	15	60.0	0	0	0.0	0	0	0.0	0	0	0.0	1	0	0.0	21	14	66.7
Truck/bus over 10,000 lbs.	122	108	88.5	0	0	0.0	0	0	0.0	2	2	100.0	5	5	100.0	109	100	91.7
Unknown	59	3	5.1	0	0	0.0	0	0	0.0	0	0	0.0	0	0	0.0	5	3	60.0
<b>Total</b>	<b>7,798</b>	<b>7,276</b>	<b>93.3</b>	<b>18</b>	<b>13</b>	<b>72.2</b>	<b>128</b>	<b>96</b>	<b>75.0</b>	<b>349</b>	<b>312</b>	<b>89.4</b>	<b>509</b>	<b>485</b>	<b>95.3</b>	<b>6,482</b>	<b>6,306</b>	<b>97.3</b>

Note: Restraint Use includes shoulder belt only used, lap belt only used, both lap and shoulder belts used, child restraint used, restraint failure, and helmet worn.

## 2017 - Restraints Worn Among Vehicle Drivers and Injured Passengers by Age

Age Group	Total Occupants			Fatalities			A - Suspected Serious			B - Suspected Minor			C - Possible Injury			No Injury		
	Total	Used Restraint	%	Total	Used Restraint	%	Total	Used Restraint	%	Total	Used Restraint	%	Total	Used Restraint	%	Total	Used Restraint	%
0 - 15	84	78	92.9	0	0	0.0	6	5	83.3	32	29	90.6	33	31	93.9	13	13	100.0
16 - 20	864	837	96.9	3	2	66.7	19	14	73.7	53	48	90.6	97	93	95.9	686	674	98.3
21 - 24	671	638	95.1	1	1	100.0	10	6	60.0	41	30	73.2	49	48	98.0	564	548	97.2
25 - 64	4,869	4,696	96.4	10	6	60.0	77	56	72.7	169	155	91.7	254	239	94.1	4,305	4,199	97.5
65 +	1,058	1,023	96.7	4	4	100.0	16	15	93.8	53	49	92.5	76	74	97.4	897	869	96.9
Unknown	252	4	1.6	0	0	0.0	0	0	0.0	1	1	100.0	0	0	0.0	17	3	17.6
<b>Total</b>	<b>7,798</b>	<b>7,276</b>	<b>93.3</b>	<b>18</b>	<b>13</b>	<b>72.2</b>	<b>128</b>	<b>96</b>	<b>75.0</b>	<b>349</b>	<b>312</b>	<b>89.4</b>	<b>509</b>	<b>485</b>	<b>95.3</b>	<b>6,482</b>	<b>6,306</b>	<b>97.3</b>

Note: Restraint Use includes shoulder belt only used, lap belt only used, both lap and shoulder belts used, child restraint used, restraint failure, and helmet worn.



## 5-Year Trend - Restraint Use Among Drivers

Restraint Use	2013			2014			2015			2016			2017		
	Drivers	Fatal Drivers	Injured Drivers	Drivers	Fatal Drivers	Injured Drivers	Drivers	Fatal Drivers	Injured Drivers	Drivers	Fatal Drivers	Injured Drivers	Drivers	Fatal Drivers	Injured Drivers
No belts available	26	0	7	38	0	2	28	0	6	29	0	10	26	0	4
Shoulder belt only used	2	0	0	1	0	0	1	0	0	15	0	2	14	0	3
Lap belt only used	8	0	2	3	0	0	7	0	1	6	0	3	4	0	0
Both lap & shoulder belts used	6,413	1	545	6,770	6	546	6,295	3	547	6,530	8	612	6,940	7	601
No belts used	40	4	17	39	2	16	34	2	21	46	3	24	38	3	19
Child restraint used	2	0	0	0	0	0	0	0	0	6	0	0	4	0	1
Child restraint not used, unavailable or improper use	0	0	0	1	0	0	1	0	1	0	0	0	0	0	0
Restraint failure	5	0	0	0	0	0	1	0	0	2	0	0	2	0	0
Restraint use unknown	67	0	13	72	1	14	65	2	5	135	2	14	311	0	23
Helmet worn	87	3	65	89	1	71	74	2	52	91	1	74	77	3	56
Helmet not worn	24	5	18	17	0	10	22	1	16	25	0	18	28	1	17
Helmet use unknown	2	1	0	3	0	1	3	0	2	7	0	4	5	0	2
Uncoded & errors	201	0	2	192	0	1	218	0	2	218	0	2	85	0	0
<b>Total</b>	<b>6,877</b>	<b>14</b>	<b>669</b>	<b>7,225</b>	<b>10</b>	<b>661</b>	<b>6,749</b>	<b>10</b>	<b>653</b>	<b>7,110</b>	<b>14</b>	<b>763</b>	<b>7,534</b>	<b>14</b>	<b>726</b>

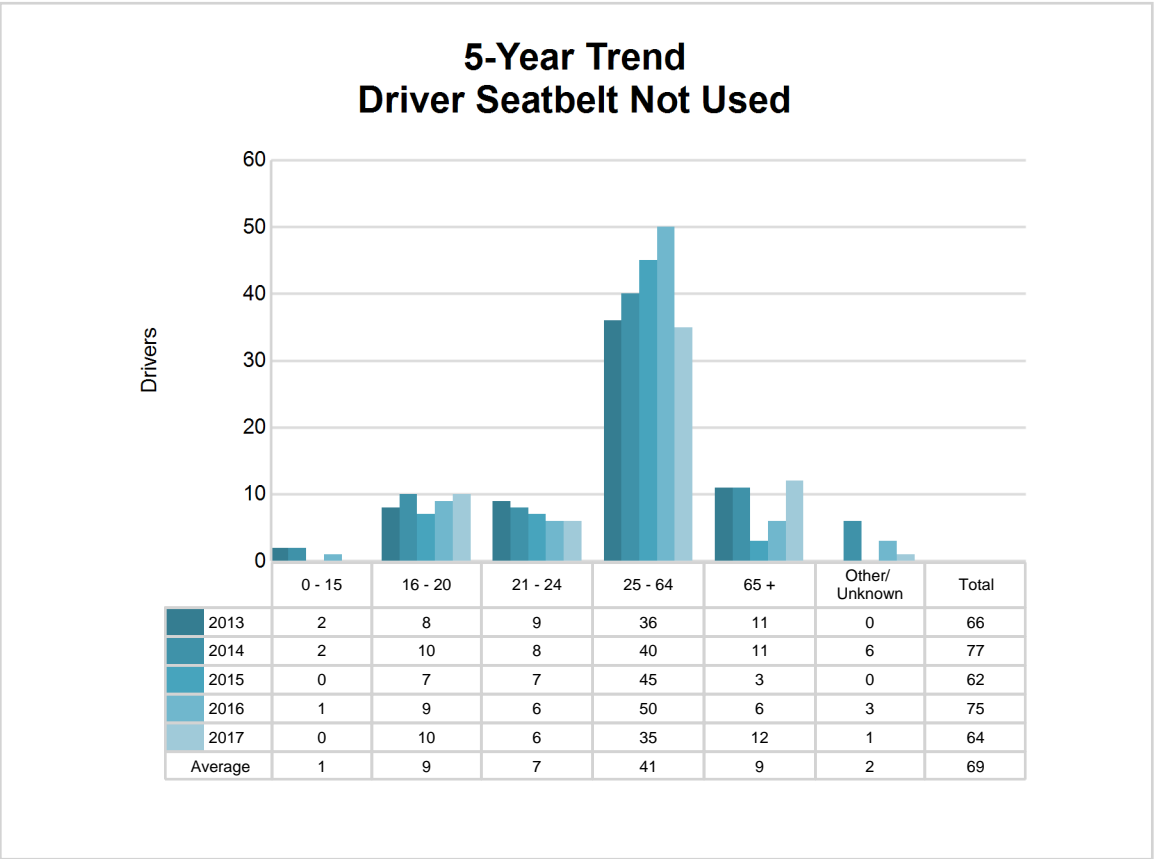
## 5-Year Trend - Restraint Use Among Drivers Coded Drinking

Restraint Use	2013			2014			2015			2016			2017		
	Drivers	Fatal Drivers	Injured Drivers	Drivers	Fatal Drivers	Injured Drivers	Drivers	Fatal Drivers	Injured Drivers	Drivers	Fatal Drivers	Injured Drivers	Drivers	Fatal Drivers	Injured Drivers
No belts available	1	0	1	0	0	0	1	0	0	1	0	0	1	0	0
Shoulder belt only used	0	0	0	0	0	0	1	0	0	0	0	0	1	0	1
Lap belt only used	0	0	0	0	0	0	1	0	1	1	0	1	0	0	0
Both lap & shoulder belts used	107	0	31	107	2	38	112	1	35	125	0	34	148	0	39
No belts used	8	3	4	10	1	7	13	1	8	11	1	7	14	3	11
Child restraint used	0	0	0	0	0	0	0	0	0	1	0	0	0	0	0
Child restraint not used, unavailable or improper use	0	0	0	0	0	0	0	0	0	0	0	0	0	0	0
Restraint failure	0	0	0	0	0	0	0	0	0	0	0	0	0	0	0
Restraint use unknown	18	0	5	24	1	6	19	0	2	23	0	9	32	0	14
Helmet worn	3	0	3	6	1	3	2	2	0	8	1	6	4	0	4
Helmet not worn	8	4	4	5	0	5	1	0	1	2	0	2	6	0	6
Helmet use unknown	0	0	0	1	0	0	0	0	0	0	0	0	1	0	1
Uncoded & errors	0	0	0	0	0	0	0	0	0	1	0	1	0	0	0
<b>Total</b>	<b>145</b>	<b>7</b>	<b>48</b>	<b>153</b>	<b>5</b>	<b>59</b>	<b>150</b>	<b>4</b>	<b>47</b>	<b>173</b>	<b>2</b>	<b>60</b>	<b>207</b>	<b>3</b>	<b>76</b>

5-Year Trend - Seatbelt Not Used Among Drivers by Age

Age Group	2013			2014			2015			2016			2017		
	Drivers	Fatal Drivers	Injured Drivers	Drivers	Fatal Drivers	Injured Drivers	Drivers	Fatal Drivers	Injured Drivers	Drivers	Fatal Drivers	Injured Drivers	Drivers	Fatal Drivers	Injured Drivers
0 - 15	2	0	2	2	0	0	0	0	0	1	0	1	0	0	0
16 - 20	8	0	4	10	0	4	7	0	4	9	1	5	10	1	3
21 - 24	9	1	2	8	0	5	7	0	3	6	0	3	6	0	4
25 - 64	36	3	13	40	2	7	45	2	19	50	1	23	35	2	11
65 +	11	0	3	11	0	2	3	0	1	6	1	1	12	0	5
Unknown	0	0	0	6	0	0	0	0	0	3	0	1	1	0	0
Total	66	4	24	77	2	18	62	2	27	75	3	34	64	3	23

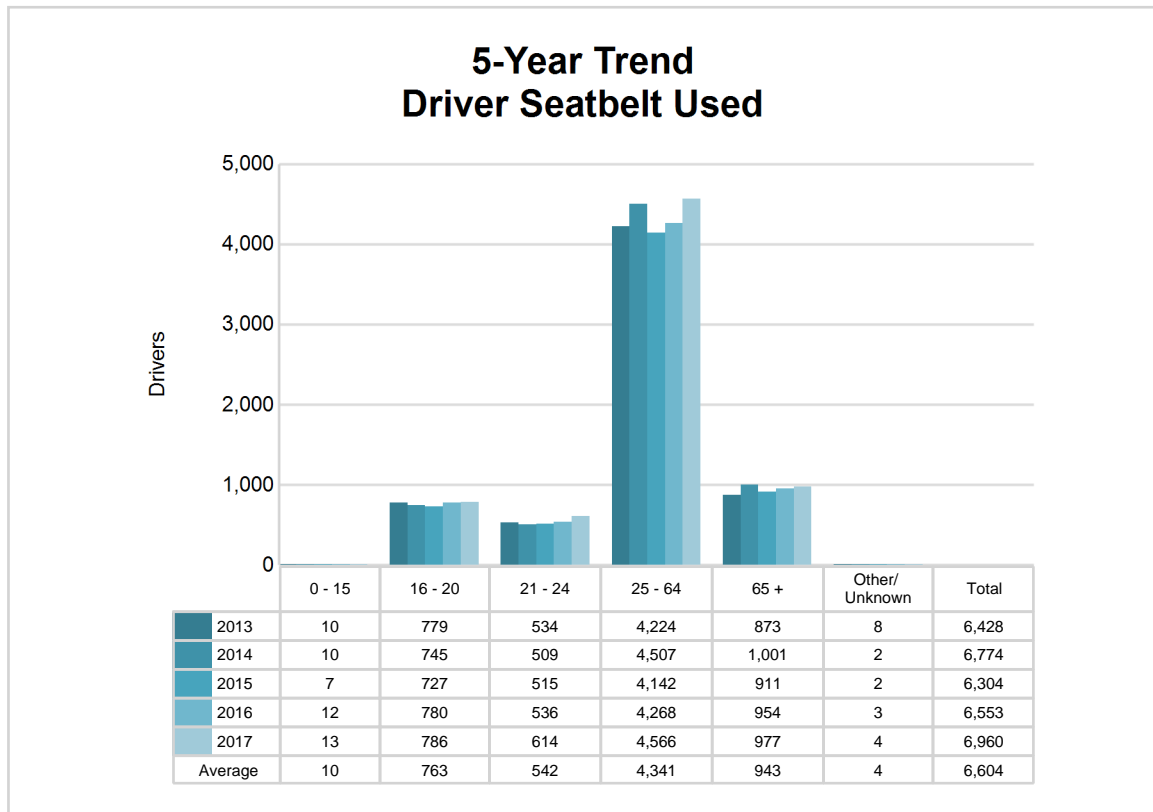
Note: Seatbelt Not Used includes no belts available or no belts used.



## 5-Year Trend - Seatbelt Used Among Drivers by Age

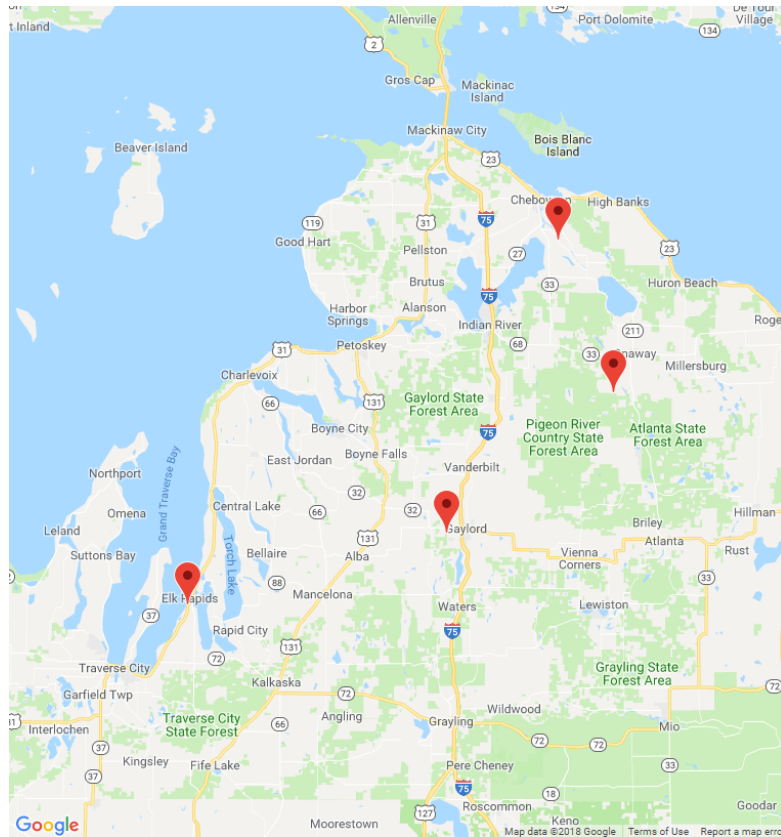
Age Group	2013			2014			2015			2016			2017		
	Drivers	Fatal Drivers	Injured Drivers	Drivers	Fatal Drivers	Injured Drivers	Drivers	Fatal Drivers	Injured Drivers	Drivers	Fatal Drivers	Injured Drivers	Drivers	Fatal Drivers	Injured Drivers
0 - 15	10	0	1	10	0	0	7	0	1	12	0	2	13	0	1
16 - 20	779	0	84	745	1	79	727	1	90	780	1	93	786	2	105
21 - 24	534	0	56	509	1	44	515	0	50	536	1	47	614	0	62
25 - 64	4,224	0	313	4,507	3	342	4,142	2	327	4,268	3	374	4,566	3	339
65 +	873	1	92	1,001	1	81	911	0	80	954	3	101	977	2	96
Unknown	8	0	1	2	0	0	2	0	0	3	0	0	4	0	1
<b>Total</b>	<b>6,428</b>	<b>1</b>	<b>547</b>	<b>6,774</b>	<b>6</b>	<b>546</b>	<b>6,304</b>	<b>3</b>	<b>548</b>	<b>6,553</b>	<b>8</b>	<b>617</b>	<b>6,960</b>	<b>7</b>	<b>604</b>

Note: Seatbelt Used includes shoulder belt only used, lap belt only used, both lap and shoulder belts used, and restraint failure.



## 5-Year Trend - Drivers in Crashes by Hazardous Action

Hazardous Action	2013		2014		2015		2016		2017	
	Total Drivers in Crashes	Drivers in Fatal Crashes	Total Drivers in Crashes	Drivers in Fatal Crashes	Total Drivers in Crashes	Drivers in Fatal Crashes	Total Drivers in Crashes	Drivers in Fatal Crashes	Total Drivers in Crashes	Drivers in Fatal Crashes
None	3,896	8	4,145	4	3,979	7	4,043	9	4,571	13
Speed too fast	1,144	10	1,125	10	829	4	1,022	7	1,071	4
Speed too slow	11	0	6	0	7	0	6	0	5	0
Failed to yield	389	3	515	1	466	0	496	3	467	2
Disregard traffic control	68	1	86	0	58	0	77	0	65	0
Drove wrong way	1	0	3	0	3	0	6	0	3	0
Drove left of center	52	0	45	1	39	3	51	2	55	3
Improper passing	27	0	37	1	26	0	34	0	26	0
Improper lane use	69	0	67	0	83	0	84	0	85	0
Improper turn	32	0	48	0	43	0	41	0	36	0
Improper/no signal	12	0	10	0	7	0	6	0	2	0
Improper backing	110	0	118	0	110	0	110	0	105	0
Unable to stop in assured clear distance	544	0	512	0	557	1	502	0	459	1
Other	162	0	198	0	193	3	223	2	190	0
Unknown	74	1	82	0	59	0	98	1	92	1
Reckless driving	27	0	13	0	38	1	35	0	19	1
Careless/negligent driving	192	1	167	0	179	0	188	2	195	0
Uncoded & errors	67	0	48	0	73	0	88	0	88	0
<b>Total</b>	<b>6,877</b>	<b>24</b>	<b>7,225</b>	<b>17</b>	<b>6,749</b>	<b>19</b>	<b>7,110</b>	<b>26</b>	<b>7,534</b>	<b>25</b>



The picture above represents all 2017 alcohol-involved fatal crashes in Post 73.

In 2017, there were 208 alcohol-involved crashes in Post 73:

- 4 K - Fatal Crashes
- 31 A - Suspected Serious Injury Crashes
- 37 B - Suspected Minor Injury Crashes
- 23 C - Possible Injury Crashes
- 113 O - Property Damage Only/No Injury Crashes

### Office of Highway Safety Planning

---

Physical Address:  
7150 Harris Drive  
Dimondale, Michigan 48821

Mailing Address:  
P.O. Box 30634  
Lansing, Michigan 48909

Phone: (517) 284-3112  
Fax: (517) 284-3151

Find us on the web:  
[MichiganTrafficCrashFacts.org](http://MichiganTrafficCrashFacts.org)

