



2017

**MTCF**  
Michigan Traffic  
Crash Facts

# Michigan Traffic Crash Facts

## Reporting Criteria

Please pay particular attention to the wording when interpreting the three levels of data gathered for this report.

### Crash

The Crash Level analyzes data related to crash events and returns one result per crash.

Examples: Time, weather, and location.

### Units

The Units Level analyzes the experience of the units in the crash and returns one result per vehicle, driver, pedestrian, bicyclist, or train.

Examples: Vehicle type, driver condition, and unit events.

### People

The People Level analyzes the experience of the people involved in the crash and returns one result per occupant/person/party.

Examples: Age, injury severity, and seat belt or helmet use.

### **KABCO Injury Indicator:**

K = Killed

A = Suspected Serious Injury

B = Suspected Minor Injury

C = Possible Injury

O = No Injury

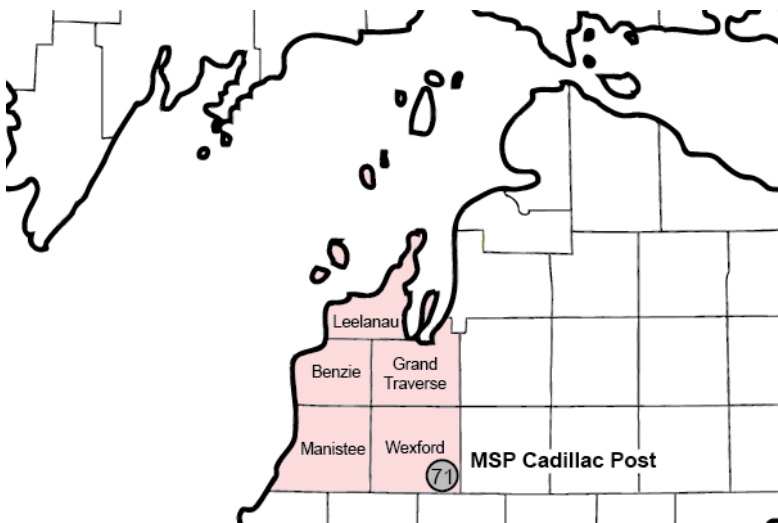
Property Damage Only (PDO)



## Michigan State Police (MSP) Post 71 - Cadillac

### 2017 Traffic Crash Data & 2013-2017 5-Year Trends

Post 71 is comprised of Benzie, Grand Traverse, Leelanau, Manistee, and Wexford counties. Trend tables for this report are based on those counties.



### Sources:

The crashes in this report occurred on public roadways in Michigan and resulted in injuries, fatalities, or property damage (with \$1,000 as a reporting threshold). The information was gathered from Michigan Traffic Crash Report Forms (UD-10) submitted by local police departments, sheriff's offices, and the Michigan State Police. Other related information was obtained from the departments of Transportation, State, and Community Health.

This page left intentionally blank

## MSP Post 71 - Cadillac

- There were 7,282 crashes in Post 71 during 2017. [Page 1]
- A total of 20 fatalities resulted from 17 fatal crashes in 2017 in Post 71. [Page 1]
- There were 1,505 injuries and 1,099 injury crashes. [Page 1]
- There were 6,166 property damage only crashes (no fatalities or injuries). [Page 1]
- December had the highest number of crashes (915). [Pages 1-2]
- September had the highest number of fatal crashes (5) and fatalities (6). [Pages 1-2]
- July had the highest number of injury crashes (127) and injuries (178). [Page 1]
- December had the highest number of property damage only crashes (808). [Page 1]
- Of all vehicles involved in fatal crashes, 2 (6.7%) were motorcycles. [Page 1]
- Friday was the day of the week with the highest number of crashes (1,207) and Saturday had the highest number of fatal crashes (6). [Pages 2-3]
- The 3:00 PM - 5:59 PM time period had the highest number of crashes (1,461). This holds true for every year between 2013 and 2017. The 6:00 PM - 8:59 PM time period had the highest number of fatal crashes (4). [Pages 5-6]
- During the period from 2013 to 2017, the highest number of deer crashes occurred in 2017 (2,215). The 6:00 PM - 8:59 PM time period had the highest number of deer-involved crashes. There were 1 fatal crashes involving deer in 2017. [Pages 7-8]
- Grand Traverse County (51.3%) had the highest number of crashes in Post 71 in 2017, followed by Wexford County (17.5%), and Manistee County (13.3%). [Page 8]
- Grand Traverse County (40.0%) had the highest number of fatalities in Post 71 in 2017, followed by Wexford County (30.0%), and Leelanau County and Manistee County (15.0%). [Page 8]
- The highest number of drivers in crashes (11,033) occurred during 2017 and the highest number of drivers coded drinking in crashes (275) occurred during 2017 within the five year period between 2013 and 2017. [Page 9]
- A total of 279 crashes involved alcohol in 2017. [Page 10]
- Alcohol-involved fatal crashes were the highest in 2013 during the five-year period from 2013 to 2017 at 10. [Page 10]
- A total of 70 crashes, 3 fatal crashes, and 5 suspected serious injury crashes involved drugs in 2017. [Page 11]
- There were 10,125 drivers wearing seatbelts and 109 drivers not wearing seatbelts in crashes in 2017. Of the 109 drivers not wearing seat belts, 3 (2.8%) were killed and 40 (36.7%) were injured. [Pages 14-16]
- The most common hazardous action coded for drivers in 2017 in all crashes was unable to stop in assured clear distance (1,267), while the most common hazardous action coded for drivers in fatal crashes was unknown (4). [Page 17]

# MSP Post 71 - Cadillac (continued)

## Post 71 Experience

In 2017:

There were 11,033 drivers involved in 7,282 motor vehicle crashes in MSP Post 71. Of those crashes, 17 were classified as fatal, resulting in 20 fatalities. An additional 1,505 persons were injured.

Post 71 experienced the highest number of motor vehicle crashes (915) in December, the highest number of fatal crashes (5) and the highest number of persons killed (6) in September.

Michigan driver statistics indicate 5.7 percent of licensed drivers in Post 71 were age 16-20, and 11.3 percent of drivers in crashes were also in that age group.

## 2017 - Crashes and Injuries by Month

Month	Crashes				Persons	
	Total	Fatal	Injury	Property Damage Only (PDO)	Fatalities	Injuries
January	728	1	97	630	2	128
February	499	0	63	436	0	84
March	481	2	60	419	2	79
April	302	0	49	253	0	64
May	498	0	87	411	0	112
June	579	2	100	477	2	135
July	578	1	127	450	2	178
August	610	3	118	489	3	174
September	597	5	93	499	6	138
October	705	0	104	601	0	138
November	790	1	96	693	1	122
December	915	2	105	808	2	153
<b>Total</b>	<b>7,282</b>	<b>17</b>	<b>1,099</b>	<b>6,166</b>	<b>20</b>	<b>1,505</b>

## 2017 - Driver Statistics

Age Group	Post 71			Driver Rates	
	2017 Population	Licensed Drivers	Drivers in Crashes	Per 10k Population	Per 10k Licensed
0 - 15	33,079	978	14	4.2	143.1
16 - 20	10,132	8,578	1,249	1,232.7	1,456.1
21 - 24	8,147	7,717	824	1,011.4	1,067.8
25 - 64	96,479	93,399	6,825	707.4	730.7
65 +	40,903	39,171	1,556	380.4	397.2
Unknown	0	0	565	--	--
<b>Total</b>	<b>188,740</b>	<b>149,843</b>	<b>11,033</b>	<b>584.6</b>	<b>736.3</b>

## 2017 - Vehicles in Crashes

Vehicle Type	Motor Vehicles		Fatal Crashes		Injury Crashes	PDO Crashes
	Number of Vehicles	% of Total	Number	% of Total	Number	Number
Passenger car, SUV, van	8,483	76.9	23	76.7	1,462	6,998
Motor home	20	0.2	0	0.0	5	15
Pickup truck	1,910	17.3	3	10.0	300	1,607
Small truck under 10,000 lbs. GVWR	96	0.9	0	0.0	11	85
Motorcycle	62	0.6	2	6.7	43	17
Moped / goped	14	0.1	0	0.0	10	4
Go-cart / golf cart	1	0.0	0	0.0	1	0
Snowmobile	9	0.1	0	0.0	6	3
Off-Road Vehicle - ORV / All-Terrain Vehicle - ATV	10	0.1	0	0.0	8	2
Other	35	0.3	0	0.0	6	29
Truck/bus over 10,000 lbs.	243	2.2	2	6.7	31	210
Unknown	150	1.4	0	0.0	4	146
<b>Total</b>	<b>11,033</b>	<b>100.0</b>	<b>30</b>	<b>100.0</b>	<b>1,887</b>	<b>9,116</b>

## 5-Year Trend - Crashes by Month

Month	2013		2014		2015		2016		2017	
	Total Crashes	Fatal Crashes	Total Crashes	Fatal Crashes	Total Crashes	Fatal Crashes	Total Crashes	Fatal Crashes	Total Crashes	Fatal Crashes
January	674	5	934	0	656	2	631	0	728	1
February	583	2	698	1	728	2	557	2	499	0
March	460	0	555	1	407	2	455	0	481	2
April	436	0	438	1	426	2	437	1	302	0
May	439	0	427	0	418	1	474	3	498	0
June	511	1	525	1	562	1	509	2	579	2
July	539	3	498	3	563	3	616	1	578	1
August	522	3	520	4	505	5	509	7	610	3
September	485	7	480	4	483	3	536	6	597	5
October	578	1	575	0	591	1	623	3	705	0
November	894	3	895	2	710	3	689	3	790	1
December	830	1	602	4	585	2	837	3	915	2
<b>Total</b>	<b>6,951</b>	<b>26</b>	<b>7,147</b>	<b>21</b>	<b>6,634</b>	<b>27</b>	<b>6,873</b>	<b>31</b>	<b>7,282</b>	<b>17</b>

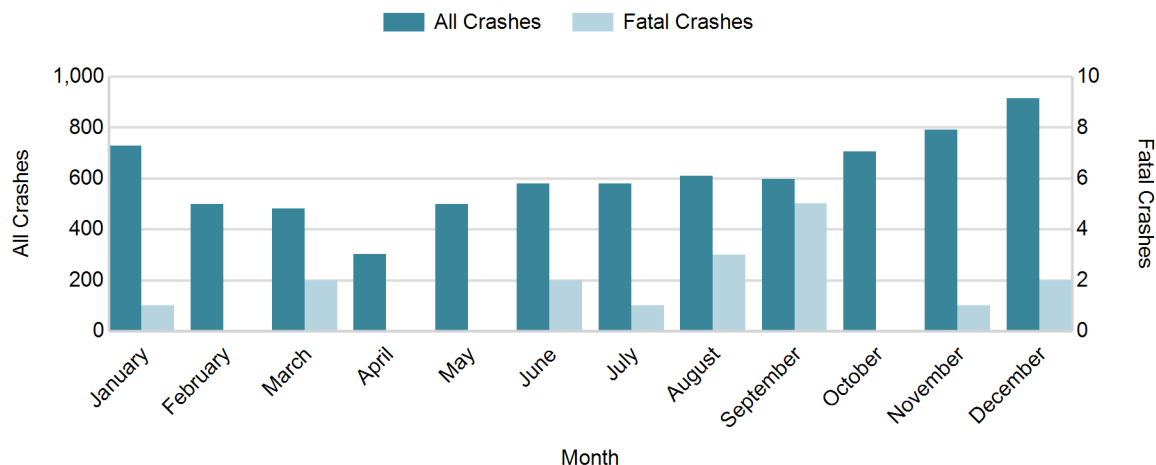
Note: † Indicates that the highest number of total crashes reported in the 5-year period occurred in the same month

## 5-Year Trend - Crashes by Day of Week

Day	2013		2014		2015		2016		2017	
	Total Crashes	Fatal Crashes	Total Crashes	Fatal Crashes	Total Crashes	Fatal Crashes	Total Crashes	Fatal Crashes	Total Crashes	Fatal Crashes
Monday	1,032	5	1,022	3	869	1	945	6	992	1
Tuesday	1,135	2	1,107	4	956	2	1,003	5	1,018	1
Wednesday	1,046	2	1,089	1	1,029	7	1,080	1	1,144	3
Thursday	1,081	3	1,051	2	1,057	5	1,055	6	1,175	2
Friday	1,096	5	1,266	2	1,073	6	1,194	5	1,207	2
Saturday	869	5	873	7	907	3	846	4	956	6
Sunday	692	4	739	2	743	3	750	4	790	2
<b>Total</b>	<b>6,951</b>	<b>26</b>	<b>7,147</b>	<b>21</b>	<b>6,634</b>	<b>27</b>	<b>6,873</b>	<b>31</b>	<b>7,282</b>	<b>17</b>

Note: † Indicates that the highest number of total crashes reported in the 5-year period occurred on the same day of the week

## 2017 Crashes by Month

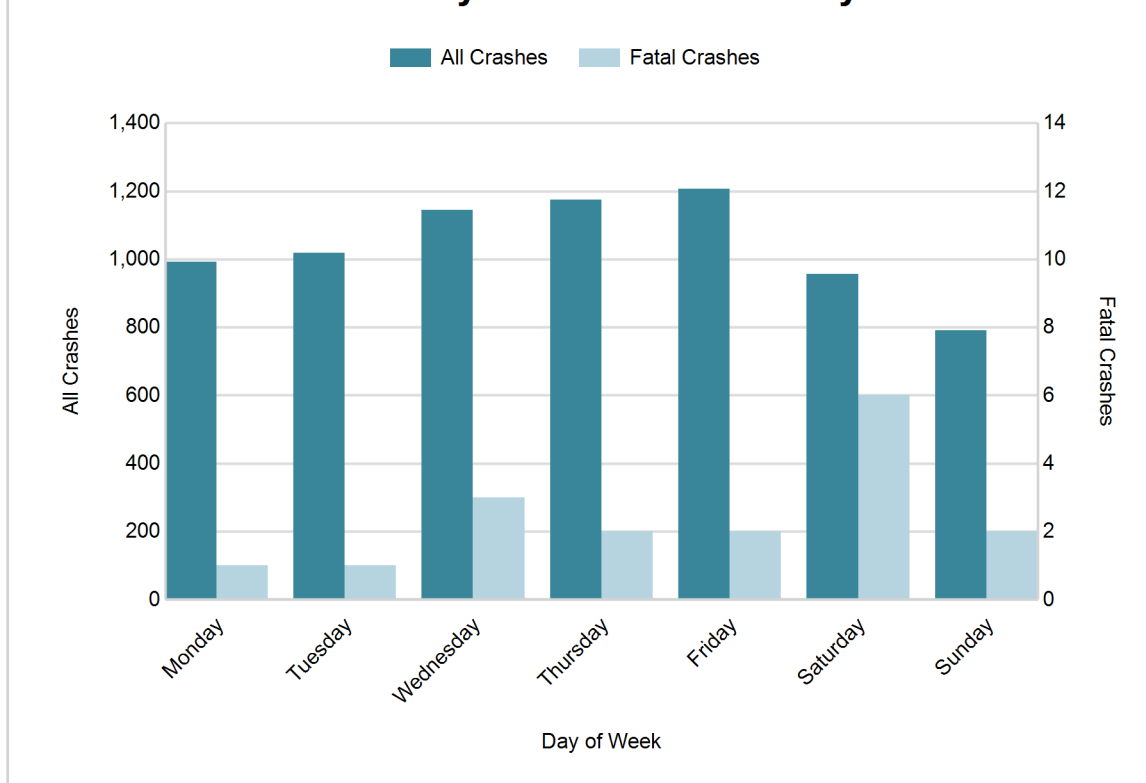


## MSP Post 71 - Cadillac (continued)

### 2017 - Crashes by Day of Week

Day	All Crashes		Fatal Crashes		Injury Crashes			PDO Crashes
	Number	% of Total	Number	% of Fatal	A	B	C	Number
Monday	992	13.6	1	5.9	21	41	87	842
Tuesday	1,018	14.0	1	5.9	18	41	90	868
Wednesday	1,144	15.7	3	17.6	16	45	97	983
Thursday	1,175	16.1	2	11.8	13	57	111	992
Friday	1,207	16.6	2	11.8	19	47	107	1,032
Saturday	956	13.1	6	35.3	27	48	90	785
Sunday	790	10.8	2	11.8	16	41	67	664
<b>Total</b>	<b>7,282</b>	<b>100.0</b>	<b>17</b>	<b>100.0</b>	<b>130</b>	<b>320</b>	<b>649</b>	<b>6,166</b>

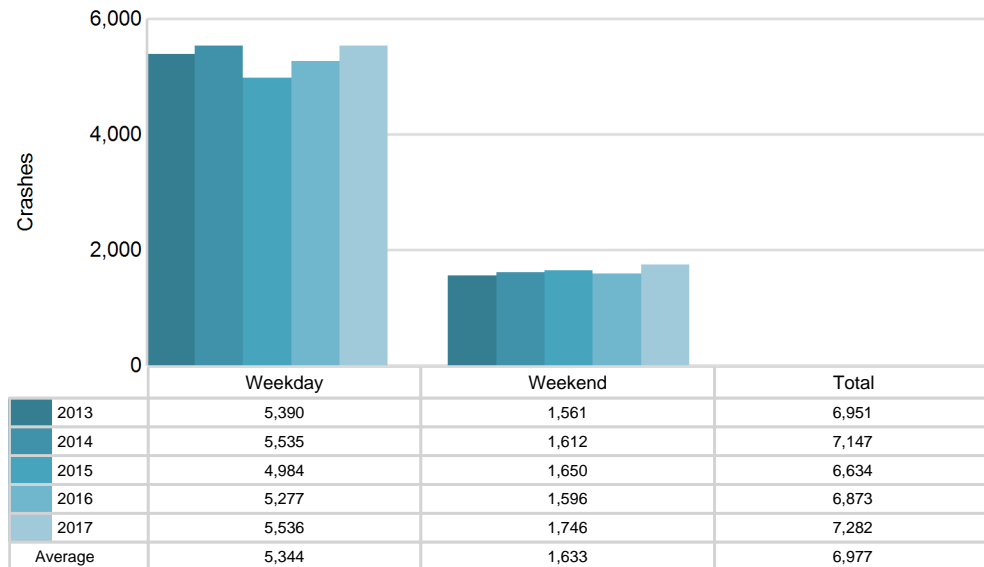
### 2017 Day of Week and Severity



## 5-Year Trend - Crashes by Weekday and Weekend

Portion of Week	2013		2014		2015		2016		2017	
	Total Crashes	Fatal Crashes	Total Crashes	Fatal Crashes	Total Crashes	Fatal Crashes	Total Crashes	Fatal Crashes	Total Crashes	Fatal Crashes
Weekday	5,390	17	5,535	12	4,984	21	5,277	23	5,536	9
Weekend	1,561	9	1,612	9	1,650	6	1,596	8	1,746	8
<b>Total</b>	<b>6,951</b>	<b>26</b>	<b>7,147</b>	<b>21</b>	<b>6,634</b>	<b>27</b>	<b>6,873</b>	<b>31</b>	<b>7,282</b>	<b>17</b>

## 5-Year Crash Trends by Weekday (Monday - Friday) and Weekend (Saturday & Sunday)

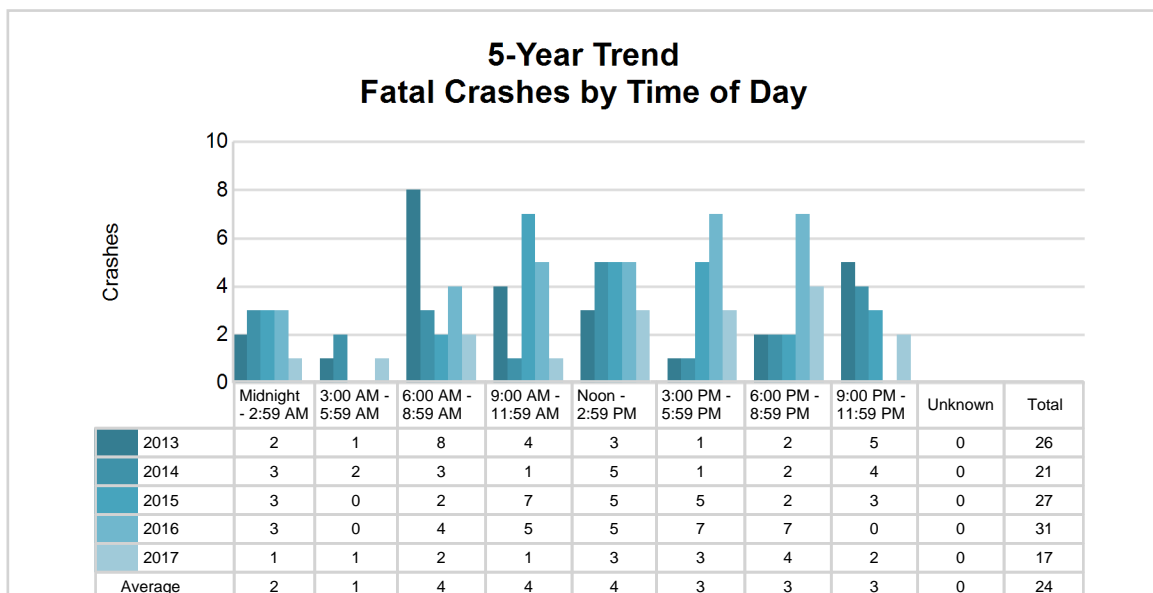
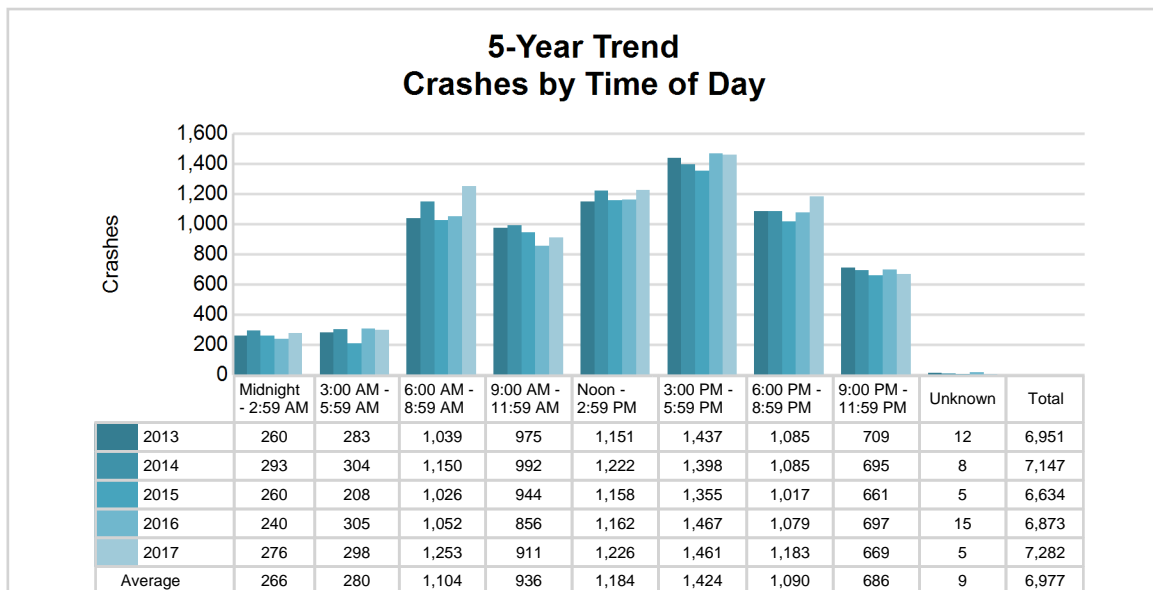


# MSP Post 71 - Cadillac (continued)

## 5-Year Trend - Crashes by Time of Day

Time of Day	2013		2014		2015		2016		2017	
	Total Crashes	Fatal Crashes	Total Crashes	Fatal Crashes	Total Crashes	Fatal Crashes	Total Crashes	Fatal Crashes	Total Crashes	Fatal Crashes
Midnight - 2:59 AM	260	2	293	3	260	3	240	3	276	1
3:00 AM - 5:59 AM	283	1	304	2	208	0	305	0	298	1
6:00 AM - 8:59 AM	1,039	8	1,150	3	1,026	2	1,052	4	1,253	2
9:00 AM - 11:59 AM	975	4	992	1	944	7	856	5	911	1
Noon - 2:59 PM	1,151	3	1,222	5	1,158	5	1,162	5	1,226	3
3:00 PM - 5:59 PM	1,437 †	1	1,398 †	1	1,355 †	5	1,467 †	7	1,461 †	3
6:00 PM - 8:59 PM	1,085	2	1,085	2	1,017	2	1,079	7	1,183	4
9:00 PM - 11:59 PM	709	5	695	4	661	3	697	0	669	2
Unknown	12	0	8	0	5	0	15	0	5	0
<b>Total</b>	<b>6,951</b>	<b>26</b>	<b>7,147</b>	<b>21</b>	<b>6,634</b>	<b>27</b>	<b>6,873</b>	<b>31</b>	<b>7,282</b>	<b>17</b>

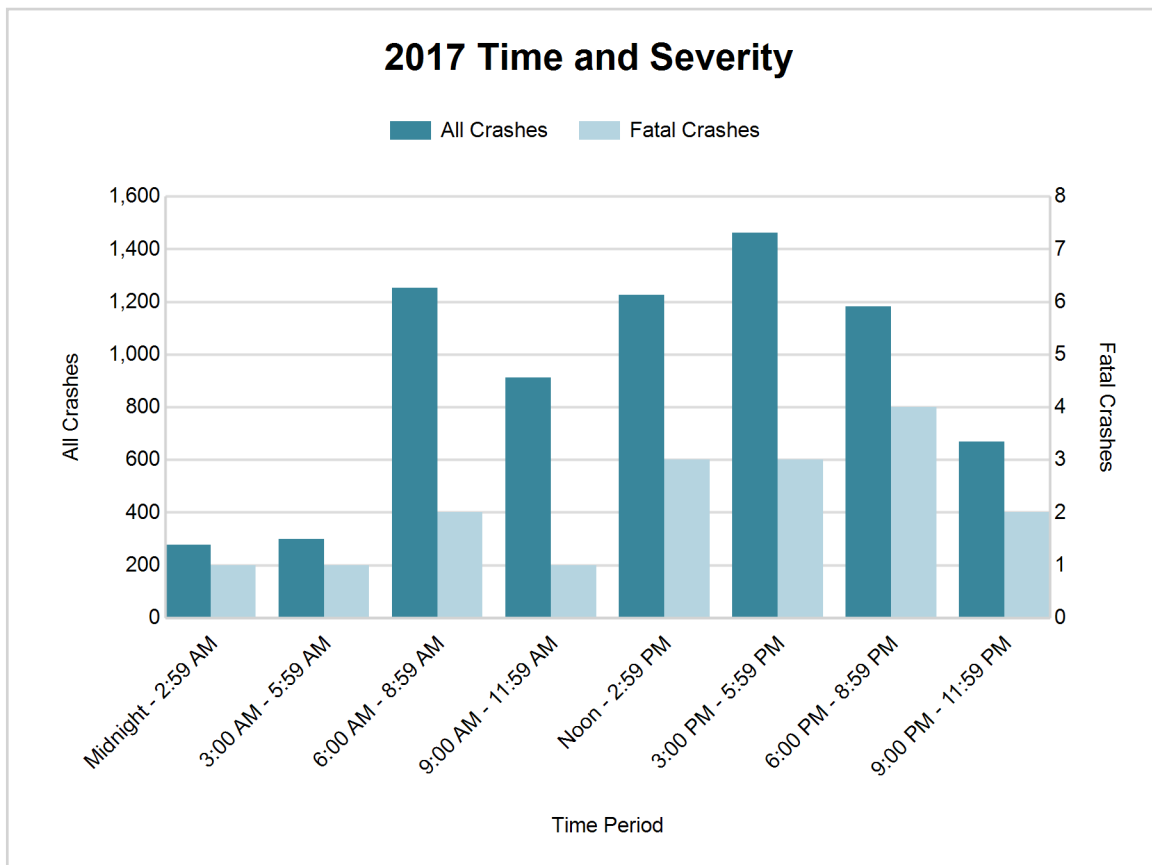
Note: † Indicates that the highest number of total crashes reported in the 5-year period occurred in the same time period





## 2017 - Time and Severity

Time of Day	All Crashes		Fatal Crashes		Injury Crashes			PDO Crashes
	Number	% of Total	Number	% of Fatal	A	B	C	Number
Midnight - 2:59 AM	276	3.8	1	5.9	11	24	19	221
3:00 AM - 5:59 AM	298	4.1	1	5.9	4	12	15	266
6:00 AM - 8:59 AM	1,253	17.2	2	11.8	13	39	84	1,115
9:00 AM - 11:59 AM	911	12.5	1	5.9	16	31	89	774
Noon - 2:59 PM	1,226	16.8	3	17.6	24	63	164	972
3:00 PM - 5:59 PM	1,461	20.1	3	17.6	21	72	174	1,191
6:00 PM - 8:59 PM	1,183	16.2	4	23.5	28	50	65	1,036
9:00 PM - 11:59 PM	669	9.2	2	11.8	13	29	39	586
Unknown	5	0.1	0	0.0	0	0	0	5
<b>Total</b>	<b>7,282</b>	<b>100.0</b>	<b>17</b>	<b>100.0</b>	<b>130</b>	<b>320</b>	<b>649</b>	<b>6,166</b>

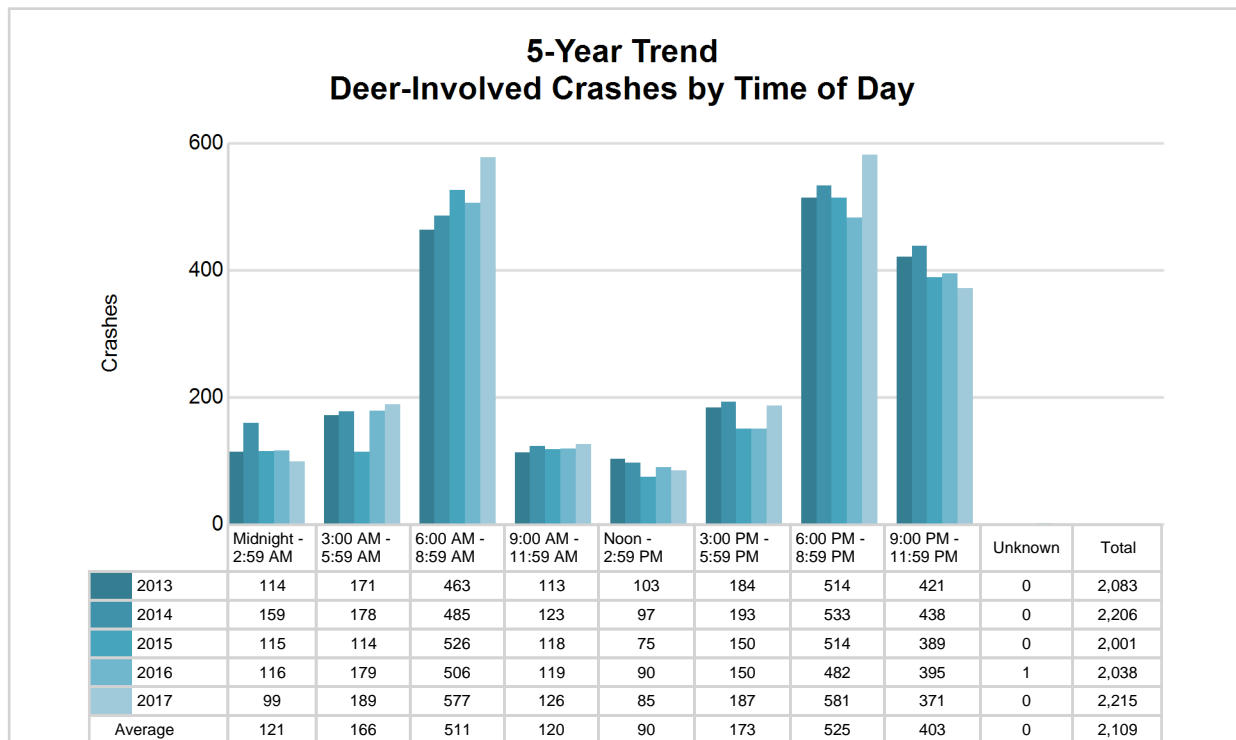


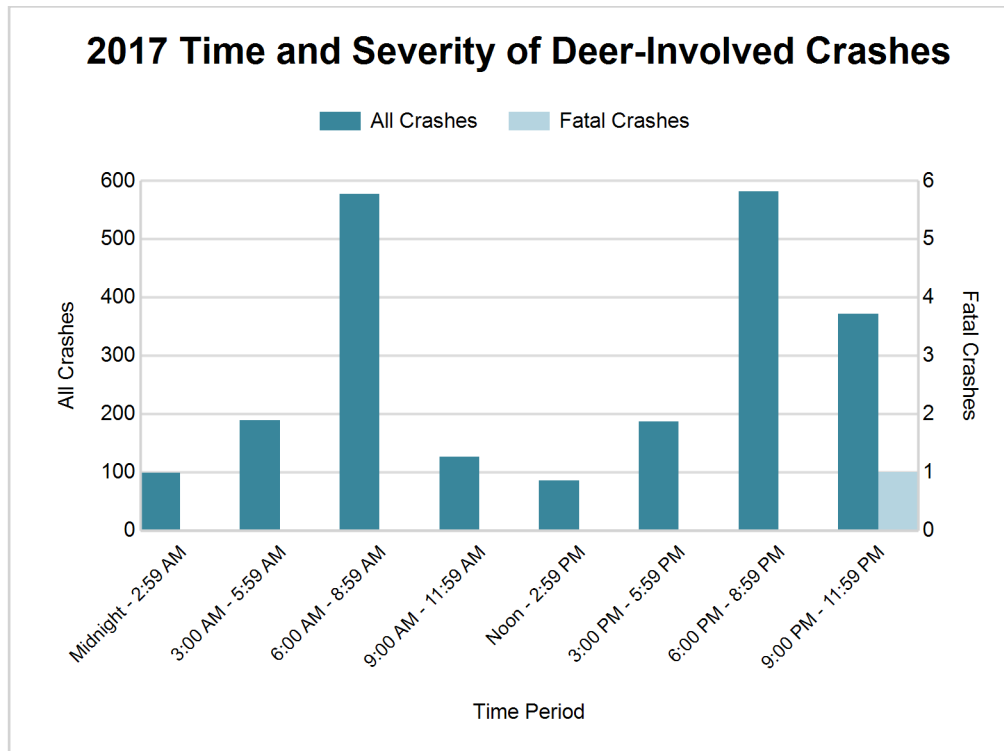
# MSP Post 71 - Cadillac (continued)

## 5-Year Trend - Deer-Involved Crashes by Time of Day

Time of Day	2013		2014		2015		2016		2017	
	Total Crashes	Fatal Crashes	Total Crashes	Fatal Crashes	Total Crashes	Fatal Crashes	Total Crashes	Fatal Crashes	Total Crashes	Fatal Crashes
Midnight - 2:59 AM	114	0	159	0	115	0	116	0	99	0
3:00 AM - 5:59 AM	171	0	178	0	114	0	179	0	189	0
6:00 AM - 8:59 AM	463	0	485	0	526	0	506	0	577	0
9:00 AM - 11:59 AM	113	0	123	0	118	0	119	0	126	0
Noon - 2:59 PM	103	0	97	0	75	0	90	0	85	0
3:00 PM - 5:59 PM	184	0	193	0	150	0	150	0	187	0
6:00 PM - 8:59 PM	514	0	533	0	514	0	482	1	581	0
9:00 PM - 11:59 PM	421	0	438	0	389	0	395	0	371	1
Unknown	0	0	0	0	0	0	1	0	0	0
<b>Total</b>	<b>2,083</b>	<b>0</b>	<b>2,206</b>	<b>0</b>	<b>2,001</b>	<b>0</b>	<b>2,038</b>	<b>1</b>	<b>2,215</b>	<b>1</b>

Note: † Indicates that the highest number of total crashes reported in the 5-year period occurred in the same time period





## 2017 - Reported Motor Vehicle Crashes by County

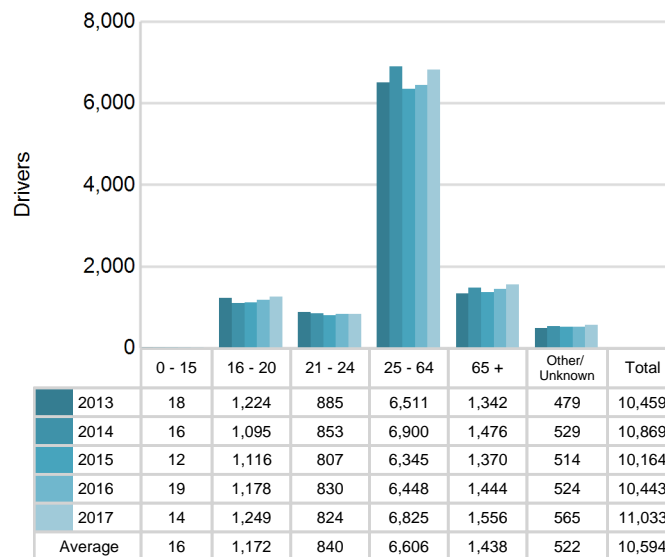
County	Crashes											Persons	
	Total	Fatal	Injury	Property Damage	Inter-state	US Route	State Route	Local Street	Alcohol-Involved	Drug-Involved	Deer-Involved	Fatalities	Injuries
Benzie	634	0	82	552	0	162	123	345	32	10	305	0	104
Grand Traverse	3,734	8	609	3,117	0	1,027	491	2,215	122	32	665	8	834
Leelanau	671	2	91	578	0	0	306	362	42	11	316	3	122
Manistee	967	3	99	865	0	256	182	527	22	7	544	3	140
Wexford	1,276	4	218	1,054	0	348	410	514	61	10	385	6	305
<b>Total</b>	<b>7,282</b>	<b>17</b>	<b>1,099</b>	<b>6,166</b>	<b>0</b>	<b>1,793</b>	<b>1,512</b>	<b>3,963</b>	<b>279</b>	<b>70</b>	<b>2,215</b>	<b>20</b>	<b>1,505</b>

# MSP Post 71 - Cadillac (continued)

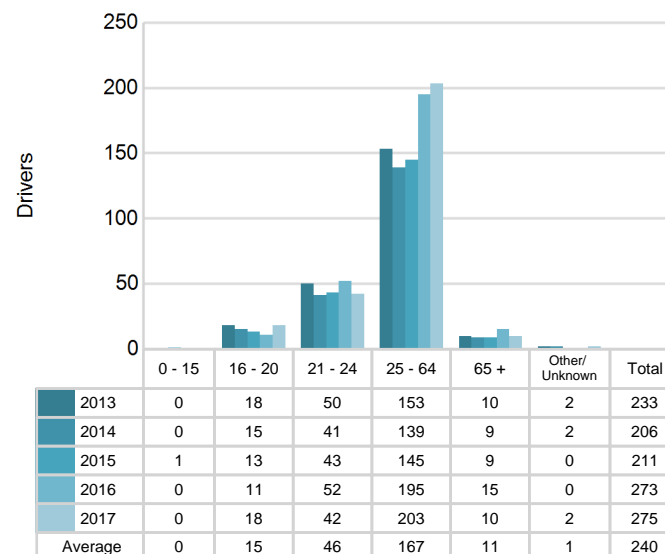
## 5-Year Trend - Drivers in Crashes Coded Drinking by Driver Age

Driver Age	2013		2014		2015		2016		2017	
	Total Drivers in Crashes	Total Drivers Coded Drinking	Total Drivers in Crashes	Total Drivers Coded Drinking	Total Drivers in Crashes	Total Drivers Coded Drinking	Total Drivers in Crashes	Total Drivers Coded Drinking	Total Drivers in Crashes	Total Drivers Coded Drinking
0 - 15	18	0	16	0	12	1	19	0	14	0
16 - 20	1,224	18	1,095	15	1,116	13	1,178	11	1,249	18
21 - 24	885	50	853	41	807	43	830	52	824	42
25 - 64	6,511	153	6,900	139	6,345	145	6,448	195	6,825	203
65 +	1,342	10	1,476	9	1,370	9	1,444	15	1,556	10
Unknown	479	2	529	2	514	0	524	0	565	2
<b>Total</b>	<b>10,459</b>	<b>233</b>	<b>10,869</b>	<b>206</b>	<b>10,164</b>	<b>211</b>	<b>10,443</b>	<b>273</b>	<b>11,033</b>	<b>275</b>

**5-Year Trend  
Total Drivers in Crashes by Age**



**5-Year Trend  
Total Drivers Coded Drinking by Age**



## 2017 - Bodily Alcohol Concentration (BAC) Results Among All Vehicle Drivers in Alcohol-Involved Crashes by Age

Age Group	Drivers				BAC Result Range for Drivers Coded Drinking				
	Total Drivers in Alcohol-Involved Crashes	Total Drivers Tested in all Crashes	Total Drivers Coded Drinking, Tested	Total Drivers Coded Drinking	BAC = 0.00	BAC 0.01 g/dL to 0.07 g/dL	BAC 0.08 g/dL to 0.16 g/dL	BAC 0.17 g/dL and Above	BAC Not Reported
0 - 15	0	0	0	0	0	0	0	0	0
16 - 20	25	25	12	18	0	1	4	3	10
21 - 24	46	49	38	42	1	7	14	10	10
25 - 64	246	239	162	203	4	22	46	58	73
65 +	19	25	7	10	0	2	3	2	3
Unknown	28	0	0	2	0	0	0	0	2
<b>Total</b>	<b>364</b>	<b>338</b>	<b>219</b>	<b>275</b>	<b>5</b>	<b>32</b>	<b>67</b>	<b>73</b>	<b>98</b>

Notes: BAC measured in grams (g) per deciliter (dL).

BAC may not be reported if drivers are not tested or if the results are not available immediately (as in the case of a blood test).

A driver may be coded by the officer as drinking even though no test is administered.

## Alcohol-Involved Crashes

In 2017, there were 364 drivers in alcohol-involved crashes; 275 (75.5%) of those drivers were coded as had-been-drinking by the officer on the crash form.

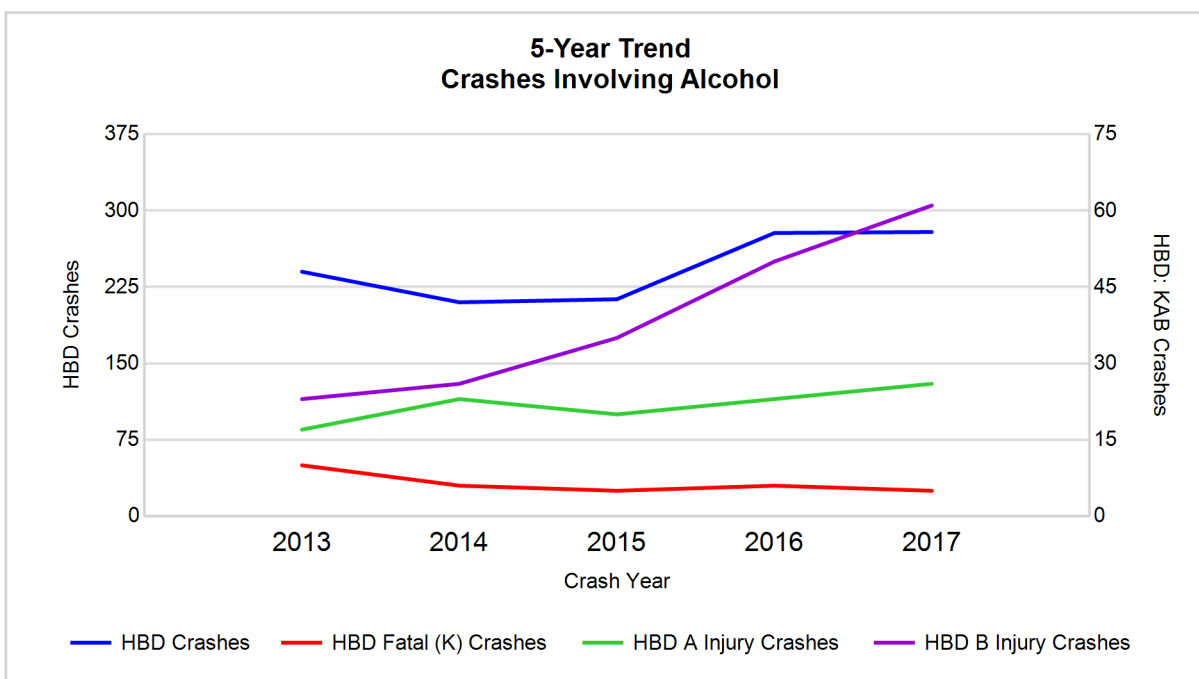
- 140 (50.9%) of the 275 drivers had a blood alcohol concentration (BAC) of 0.08 g/dL (grams per deciliter) or greater, and 73 (52.1%) of the 140 drivers had a BAC at or above 0.17 g/dL.
- 219 (79.6%) of the 275 drivers were coded as had-been-drinking and were tested for alcohol consumption.

## 5-Year Trend - Crashes Involving Alcohol

Year	All Crashes	HBD Crashes	% HBD	Fatal Crashes	HBD Fatal Crashes	% HBD	A Injury Crashes	HBD A Injury Crashes	% HBD	B Injury Crashes	HBD B Injury Crashes	% HBD
2013	6,951	240	3.5	26	10	38.5	111	17	15.3	236	23	9.7
2014	7,147	210	2.9	21	6	28.6	95	23	24.2	203	26	12.8
2015	6,634	213	3.2	27	5	18.5	83	20	24.1	244	35	14.3
2016	6,873	278	4.0	31	6	19.4	102	23	22.5	298	50	16.8
2017	7,282**	279**	3.8	17*	5	29.4	130**	26**	20.0	320**	61**	19.1**

Note: \* Indicates that the most recent year is the lowest number or percentage reported in the 5-year period in that column

\*\* Indicates that the most recent year is the highest number or percentage reported in the 5-year period in that column



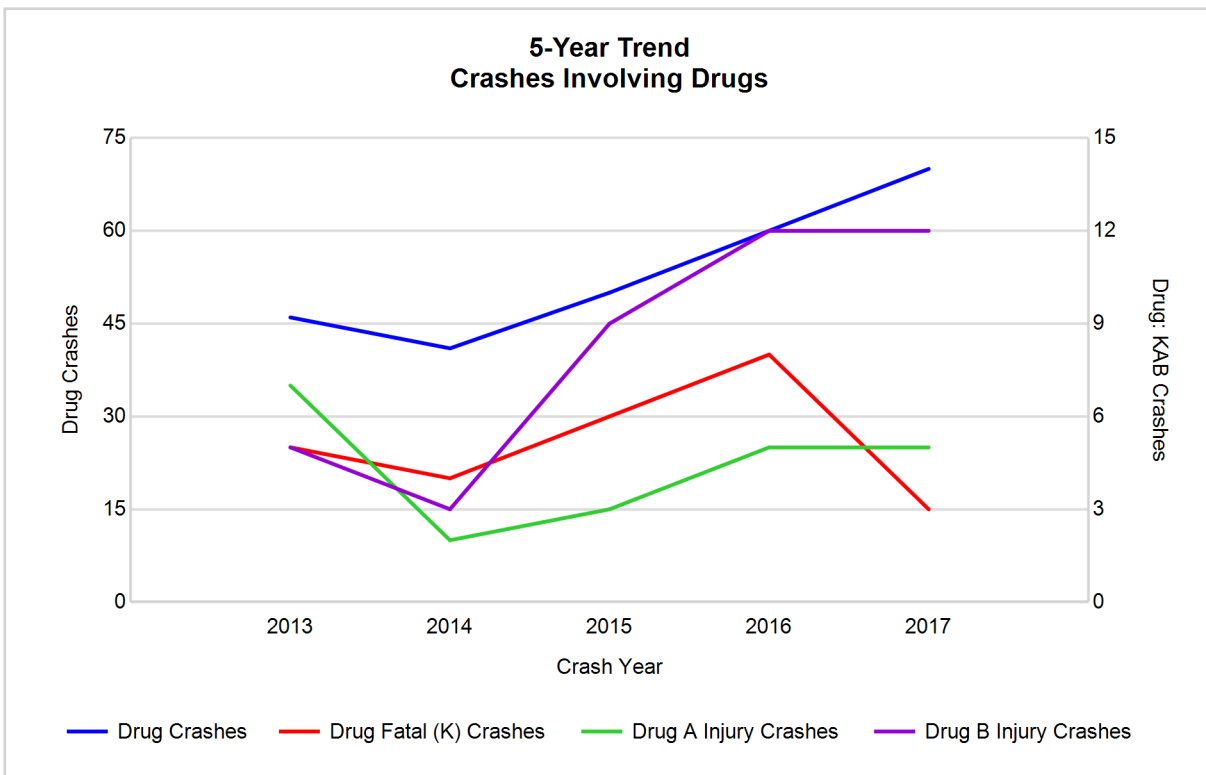
Note: Had-Been-Drinking (HBD)

## 5-Year Trend - Crashes Involving Drugs

Year	All Crashes	Drug Crashes	% Drug	Fatal Crashes	Drug Fatal Crashes	% Drug	A Injury Crashes	Drug A Injury Crashes	% Drug	B Injury Crashes	Drug B Injury Crashes	% Drug
2013	6,951	46	0.7	26	5	19.2	111	7	6.3	236	5	2.1
2014	7,147	41	0.6	21	4	19.0	95	2	2.1	203	3	1.5
2015	6,634	50	0.8	27	6	22.2	83	3	3.6	244	9	3.7
2016	6,873	60	0.9	31	8	25.8	102	5	4.9	298	12	4.0
2017	7,282**	70**	1.0**	17*	3*	17.6*	130**	5	3.8	320**	12	3.8

Note: \* Indicates that the most recent year is the lowest number or percentage reported in the 5-year period in that column

\*\* Indicates that the most recent year is the highest number or percentage reported in the 5-year period in that column

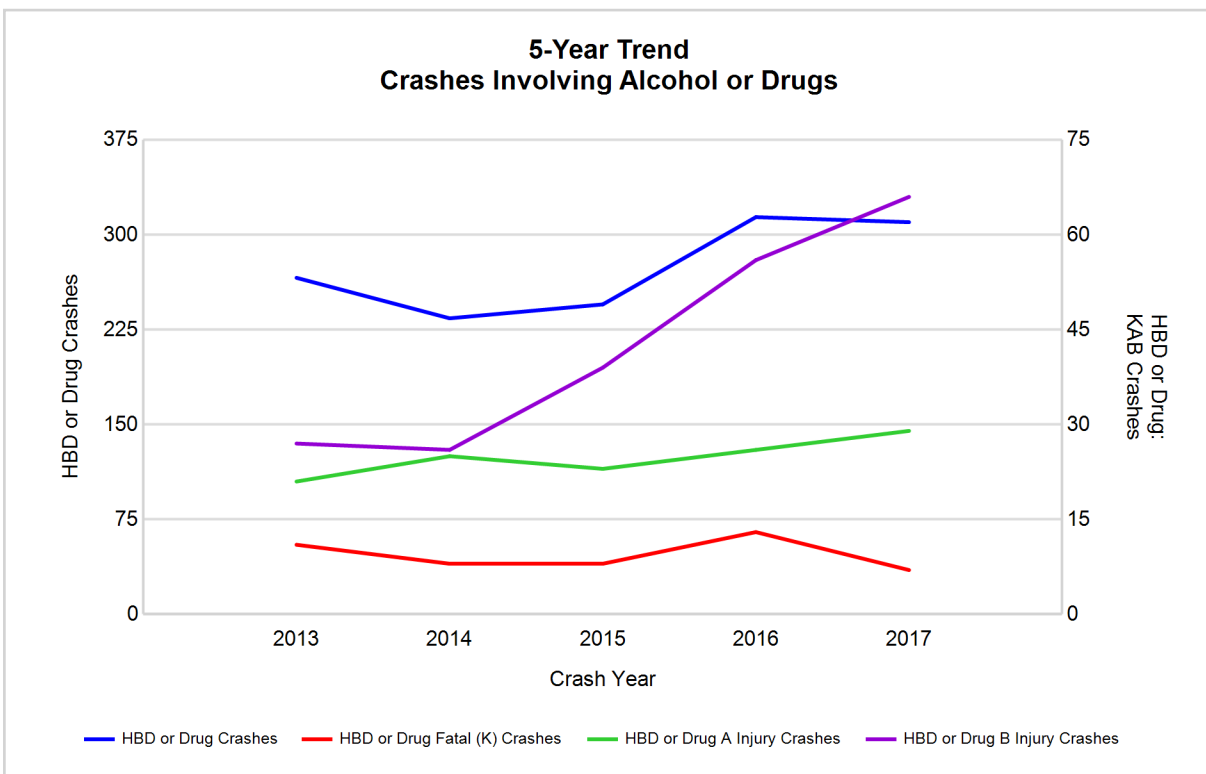


## 5-Year Trend - Crashes Involving Alcohol or Drugs

Year	All Crashes	HBD or Drug Crashes	% HBD or Drug	Fatal Crashes	HBD or Drug Fatal Crashes	% HBD or Drug	A Injury Crashes	HBD or Drug A Injury Crashes	% HBD or Drug	B Injury Crashes	HBD or Drug B Injury Crashes	% HBD or Drug
2013	6,951	266	3.8	26	11	42.3	111	21	18.9	236	27	11.4
2014	7,147	234	3.3	21	8	38.1	95	25	26.3	203	26	12.8
2015	6,634	245	3.7	27	8	29.6	83	23	27.7	244	39	16.0
2016	6,873	314	4.6	31	13	41.9	102	26	25.5	298	56	18.8
2017	7,282**	310	4.3	17*	7*	41.2	130**	29**	22.3	320**	66**	20.6**

Note: \* Indicates that the most recent year is the lowest number or percentage reported in the 5-year period in that column

\*\* Indicates that the most recent year is the highest number or percentage reported in the 5-year period in that column



Note: Had-Been-Drinking (HBD)

## 2017 - Restraints Worn Among Vehicle Drivers and Injured Passengers by Vehicle Type

Vehicle Type	Total Occupants			Fatalities			A - Suspected Serious			B - Suspected Minor			C - Possible Injury			No Injury		
	Total	Used Restraint	%	Total	Used Restraint	%	Total	Used Restraint	%	Total	Used Restraint	%	Total	Used Restraint	%	Total	Used Restraint	%
Passenger car, SUV, van	8,807	8,285	94.1	15	10	66.7	88	71	80.7	291	264	90.7	799	771	96.5	7,281	7,151	98.2
Motor home	23	16	69.6	0	0	0.0	0	0	0.0	2	1	50.0	3	3	100.0	13	12	92.3
Pickup truck	1,948	1,805	92.7	0	0	0.0	23	21	91.3	54	45	83.3	97	92	94.8	1,672	1,644	98.3
Small truck under 10,000 lbs. GVWR	96	91	94.8	0	0	0.0	2	2	100.0	0	0	0.0	3	3	100.0	88	86	97.7
Motorcycle	68	45	66.2	2	0	0.0	19	10	52.6	15	11	73.3	14	10	71.4	17	14	82.4
Moped / goped	15	4	26.7	0	0	0.0	2	1	50.0	4	1	25.0	4	1	25.0	5	1	20.0
Go-cart / golf cart	1	0	0.0	0	0	0.0	0	0	0.0	0	0	0.0	0	0	0.0	1	0	0.0
Snowmobile	10	10	100.0	0	0	0.0	4	4	100.0	1	1	100.0	2	2	100.0	3	3	100.0
Off-Road Vehicle - ORV / All-Terrain Vehicle - ATV	12	2	16.7	0	0	0.0	5	0	0.0	2	0	0.0	1	0	0.0	4	2	50.0
Other	35	25	71.4	0	0	0.0	1	0	0.0	1	0	0.0	0	0	0.0	27	25	92.6
Truck/bus over 10,000 lbs.	246	231	93.9	0	0	0.0	0	0	0.0	3	3	100.0	14	11	78.6	221	217	98.2
Unknown	150	0	0.0	0	0	0.0	0	0	0.0	0	0	0.0	0	0	0.0	0	0	0.0
<b>Total</b>	<b>11,411</b>	<b>10,514</b>	<b>92.1</b>	<b>17</b>	<b>10</b>	<b>58.8</b>	<b>144</b>	<b>109</b>	<b>75.7</b>	<b>373</b>	<b>326</b>	<b>87.4</b>	<b>937</b>	<b>893</b>	<b>95.3</b>	<b>9,332</b>	<b>9,155</b>	<b>98.1</b>

Note: Restraint Use includes shoulder belt only used, lap belt only used, both lap and shoulder belts used, child restraint used, restraint failure, and helmet worn.

## 2017 - Restraints Worn Among Vehicle Drivers and Injured Passengers by Age

Age Group	Total Occupants			Fatalities			A - Suspected Serious			B - Suspected Minor			C - Possible Injury			No Injury		
	Total	Used Restraint	%	Total	Used Restraint	%	Total	Used Restraint	%	Total	Used Restraint	%	Total	Used Restraint	%	Total	Used Restraint	%
0 - 15	101	98	97.0	0	0	0.0	4	3	75.0	20	18	90.0	65	65	100.0	12	12	100.0
16 - 20	1,296	1,267	97.8	0	0	0.0	12	9	75.0	56	52	92.9	117	109	93.2	1,109	1,096	98.8
21 - 24	851	810	95.2	2	1	50.0	9	4	44.4	37	28	75.7	78	72	92.3	722	703	97.4
25 - 64	6,974	6,745	96.7	10	6	60.0	90	70	77.8	199	175	87.9	550	522	94.9	6,087	5,958	97.9
65 +	1,624	1,594	98.2	5	3	60.0	29	23	79.3	61	53	86.9	127	125	98.4	1,395	1,386	99.4
Unknown	565	0	0.0	0	0	0.0	0	0	0.0	0	0	0.0	0	0	0.0	7	0	0.0
<b>Total</b>	<b>11,411</b>	<b>10,514</b>	<b>92.1</b>	<b>17</b>	<b>10</b>	<b>58.8</b>	<b>144</b>	<b>109</b>	<b>75.7</b>	<b>373</b>	<b>326</b>	<b>87.4</b>	<b>937</b>	<b>893</b>	<b>95.3</b>	<b>9,332</b>	<b>9,155</b>	<b>98.1</b>

Note: Restraint Use includes shoulder belt only used, lap belt only used, both lap and shoulder belts used, child restraint used, restraint failure, and helmet worn.



# MSP Post 71 - Cadillac (continued)

14

## 5-Year Trend - Restraint Use Among Drivers

Restraint Use	2013			2014			2015			2016			2017		
	Drivers	Fatal Drivers	Injured Drivers	Drivers	Fatal Drivers	Injured Drivers	Drivers	Fatal Drivers	Injured Drivers	Drivers	Fatal Drivers	Injured Drivers	Drivers	Fatal Drivers	Injured Drivers
No belts available	47	1	9	111	0	11	52	1	10	33	0	4	17	0	5
Shoulder belt only used	4	0	1	24	0	2	12	0	2	34	0	3	65	0	4
Lap belt only used	35	0	7	64	0	4	48	0	1	45	0	4	38	0	3
Both lap & shoulder belts used	9,580	11	833	9,832	4	736	9,237	7	766	9,517	13	787	10,016	9	950
No belts used	45	5	20	89	1	24	76	5	30	71	6	31	92	3	35
Child restraint used	0	0	0	0	0	0	0	0	0	1	0	0	0	0	0
Child restraint not used, unavailable or improper use	3	0	0	0	0	0	0	0	0	0	0	0	0	0	0
Restraint failure	8	0	0	5	1	0	3	0	0	6	0	2	6	0	2
Restraint use unknown	224	1	24	224	0	24	181	1	14	466	1	21	691	1	20
Helmet worn	72	1	50	61	2	48	73	5	49	66	1	50	56	0	37
Helmet not worn	18	0	18	12	0	10	26	0	19	25	3	19	28	2	19
Helmet use unknown	3	0	2	2	0	1	8	1	3	5	0	4	4	0	3
Uncoded & errors	420	0	0	445	0	0	448	0	0	174	0	1	20	0	0
<b>Total</b>	<b>10,459</b>	<b>19</b>	<b>964</b>	<b>10,869</b>	<b>8</b>	<b>860</b>	<b>10,164</b>	<b>20</b>	<b>894</b>	<b>10,443</b>	<b>24</b>	<b>926</b>	<b>11,033</b>	<b>15</b>	<b>1,078</b>

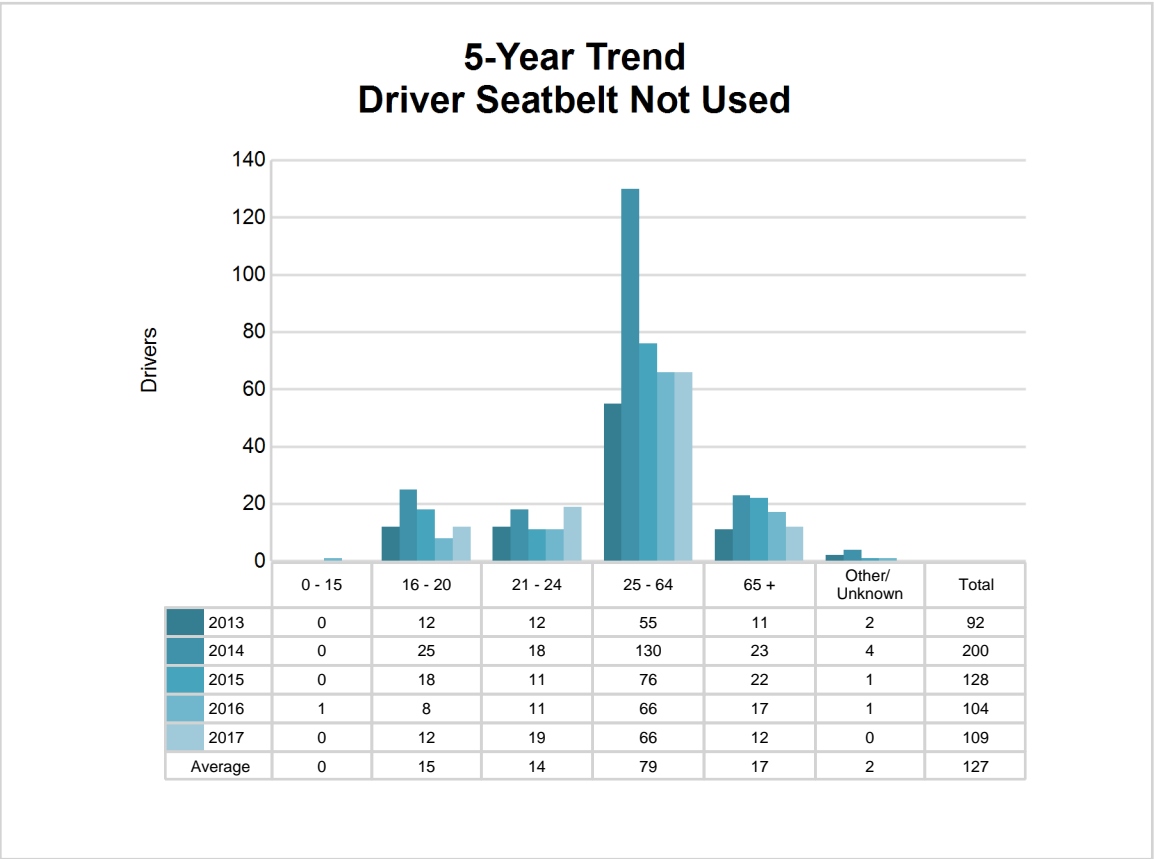
## 5-Year Trend - Restraint Use Among Drivers Coded Drinking

Restraint Use	2013			2014			2015			2016			2017		
	Drivers	Fatal Drivers	Injured Drivers	Drivers	Fatal Drivers	Injured Drivers	Drivers	Fatal Drivers	Injured Drivers	Drivers	Fatal Drivers	Injured Drivers	Drivers	Fatal Drivers	Injured Drivers
No belts available	0	0	0	6	0	1	3	0	3	2	0	1	0	0	0
Shoulder belt only used	1	0	1	1	0	1	0	0	0	1	0	1	1	0	0
Lap belt only used	3	0	2	2	0	0	0	0	0	0	0	0	0	0	0
Both lap & shoulder belts used	158	1	37	148	0	31	159	1	46	208	2	59	197	1	60
No belts used	13	3	6	10	1	9	13	2	9	14	2	10	13	1	11
Child restraint used	0	0	0	0	0	0	0	0	0	0	0	0	0	0	0
Child restraint not used, unavailable or improper use	0	0	0	0	0	0	0	0	0	0	0	0	0	0	0
Restraint failure	0	0	0	2	0	0	0	0	0	1	0	1	0	0	0
Restraint use unknown	48	1	13	28	0	12	23	0	9	35	0	10	51	1	9
Helmet worn	6	1	4	7	1	6	7	1	6	4	0	3	4	0	3
Helmet not worn	2	0	2	1	0	1	5	0	5	4	1	3	7	0	6
Helmet use unknown	0	0	0	0	0	0	1	0	1	2	0	2	0	0	0
Uncoded & errors	2	0	0	1	0	0	0	0	0	2	0	1	2	0	0
<b>Total</b>	<b>233</b>	<b>6</b>	<b>65</b>	<b>206</b>	<b>2</b>	<b>61</b>	<b>211</b>	<b>4</b>	<b>79</b>	<b>273</b>	<b>5</b>	<b>91</b>	<b>275</b>	<b>3</b>	<b>89</b>

5-Year Trend - Seatbelt Not Used Among Drivers by Age

Age Group	2013			2014			2015			2016			2017		
	Drivers	Fatal Drivers	Injured Drivers	Drivers	Fatal Drivers	Injured Drivers	Drivers	Fatal Drivers	Injured Drivers	Drivers	Fatal Drivers	Injured Drivers	Drivers	Fatal Drivers	Injured Drivers
0 - 15	0	0	0	0	0	0	0	0	0	1	0	1	0	0	0
16 - 20	12	0	8	25	1	6	18	1	10	8	0	2	12	0	5
21 - 24	12	0	2	18	0	5	11	1	2	11	1	6	19	1	7
25 - 64	55	4	16	130	0	23	76	2	23	66	4	20	66	1	21
65 +	11	2	3	23	0	1	22	2	5	17	1	6	12	1	7
Unknown	2	0	0	4	0	0	1	0	0	1	0	0	0	0	0
Total	92	6	29	200	1	35	128	6	40	104	6	35	109	3	40

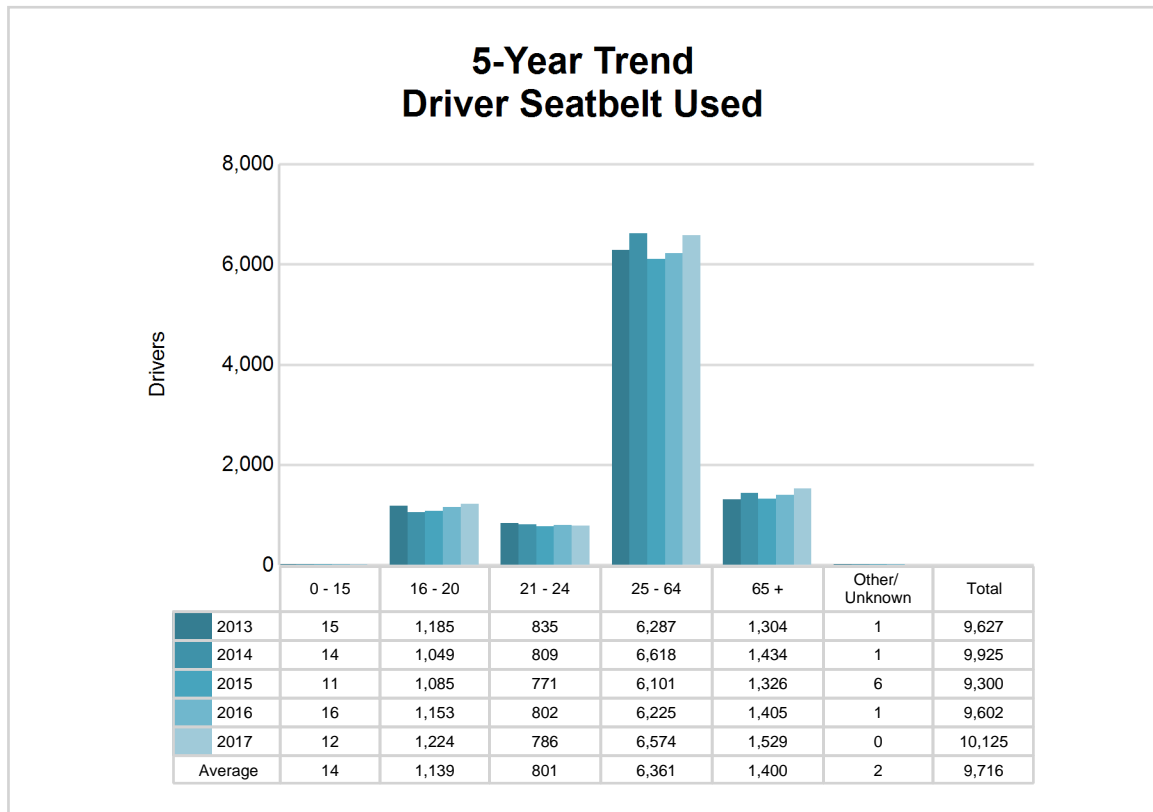
Note: Seatbelt Not Used includes no belts available or no belts used.



## 5-Year Trend - Seatbelt Used Among Drivers by Age

Age Group	2013			2014			2015			2016			2017		
	Drivers	Fatal Drivers	Injured Drivers	Drivers	Fatal Drivers	Injured Drivers	Drivers	Fatal Drivers	Injured Drivers	Drivers	Fatal Drivers	Injured Drivers	Drivers	Fatal Drivers	Injured Drivers
0 - 15	15	0	1	14	0	2	11	0	3	16	0	3	12	0	0
16 - 20	1,185	2	104	1,049	0	69	1,085	2	97	1,153	1	94	1,224	0	128
21 - 24	835	0	74	809	1	82	771	0	71	802	0	73	786	1	82
25 - 64	6,287	4	523	6,618	4	459	6,101	3	465	6,225	4	512	6,574	5	611
65 +	1,304	5	139	1,434	0	130	1,326	2	133	1,405	8	114	1,529	3	138
Unknown	1	0	0	1	0	0	6	0	0	1	0	0	0	0	0
<b>Total</b>	<b>9,627</b>	<b>11</b>	<b>841</b>	<b>9,925</b>	<b>5</b>	<b>742</b>	<b>9,300</b>	<b>7</b>	<b>769</b>	<b>9,602</b>	<b>13</b>	<b>796</b>	<b>10,125</b>	<b>9</b>	<b>959</b>

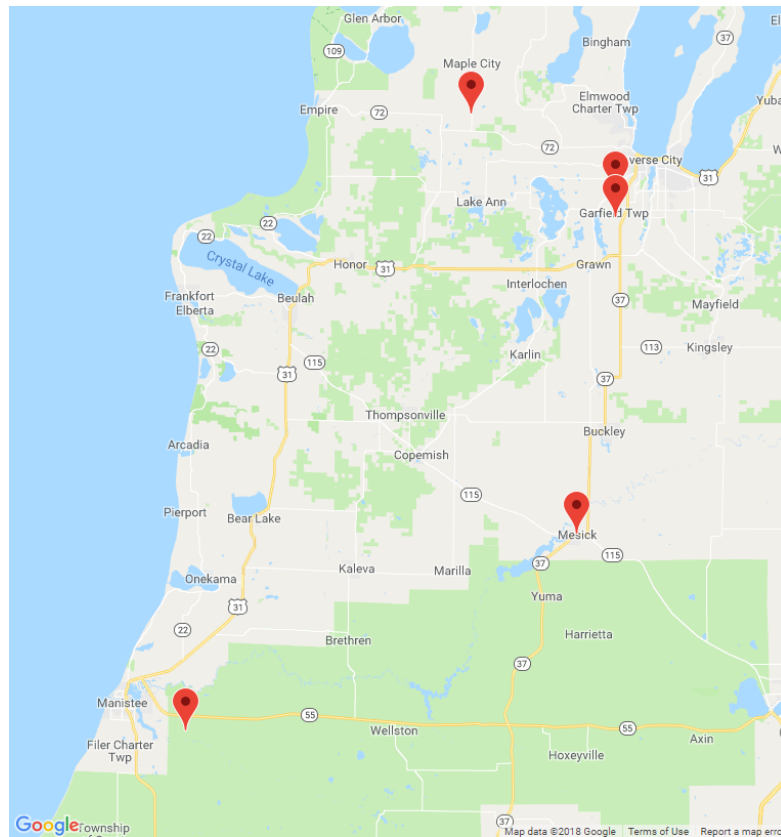
Note: Seatbelt Used includes shoulder belt only used, lap belt only used, both lap and shoulder belts used, and restraint failure.



## MSP Post 71 - Cadillac (continued)

## 5-Year Trend - Drivers in Crashes by Hazardous Action

Hazardous Action	2013		2014		2015		2016		2017	
	Total Drivers in Crashes	Drivers in Fatal Crashes	Total Drivers in Crashes	Drivers in Fatal Crashes	Total Drivers in Crashes	Drivers in Fatal Crashes	Total Drivers in Crashes	Drivers in Fatal Crashes	Total Drivers in Crashes	Drivers in Fatal Crashes
None	5,659	19	6,165	16	5,807	14	5,735	23	6,095	13
Speed too fast	1,223	9	1,136	3	888	9	967	7	1,015	3
Speed too slow	11	0	14	0	15	0	11	0	9	0
Failed to yield	874	2	1,006	1	894	4	955	4	1,011	2
Disregard traffic control	133	6	124	0	130	0	125	4	121	2
Drove wrong way	3	0	5	0	5	0	5	0	2	0
Drove left of center	67	0	83	3	59	4	85	3	87	3
Improper passing	35	0	44	0	50	0	49	0	43	0
Improper lane use	139	0	126	1	123	0	156	3	154	0
Improper turn	58	0	60	0	55	0	67	0	78	0
Improper/no signal	19	0	31	0	13	0	6	0	5	0
Improper backing	139	0	173	0	166	0	153	0	154	0
Unable to stop in assured clear distance	1,236	0	1,199	0	1,192	1	1,242	1	1,267	0
Other	296	1	319	2	339	1	302	0	303	1
Unknown	166	1	159	2	197	5	326	7	424	4
Reckless driving	30	1	21	2	33	1	22	1	25	2
Careless/negligent driving	216	2	172	1	188	3	223	2	234	0
Uncoded & errors	155	0	32	0	10	0	14	1	6	0
<b>Total</b>	<b>10,459</b>	<b>41</b>	<b>10,869</b>	<b>31</b>	<b>10,164</b>	<b>42</b>	<b>10,443</b>	<b>56</b>	<b>11,033</b>	<b>30</b>



The picture above represents all 2017 alcohol-involved fatal crashes in Post 71.

In 2017, there were 279 alcohol-involved crashes in Post 71:

5	K - Fatal Crashes
26	A - Suspected Serious Injury Crashes
61	B - Suspected Minor Injury Crashes
32	C - Possible Injury Crashes
155	O - Property Damage Only/No Injury Crashes

### Office of Highway Safety Planning

---

Physical Address:  
7150 Harris Drive  
Dimondale, Michigan 48821

Mailing Address:  
P.O. Box 30634  
Lansing, Michigan 48909

Phone: (517) 284-3112  
Fax: (517) 284-3151

Find us on the web:  
[MichiganTrafficCrashFacts.org](http://MichiganTrafficCrashFacts.org)

