



2017

**MTCF**  
Michigan Traffic  
Crash Facts

# Michigan Traffic Crash Facts

## Reporting Criteria

Please pay particular attention to the wording when interpreting the three levels of data gathered for this report.

### Crash

The Crash Level analyzes data related to crash events and returns one result per crash.

Examples: Time, weather, and location.

### Units

The Units Level analyzes the experience of the units in the crash and returns one result per vehicle, driver, pedestrian, bicyclist, or train.

Examples: Vehicle type, driver condition, and unit events.

### People

The People Level analyzes the experience of the people involved in the crash and returns one result per occupant/person/party.

Examples: Age, injury severity, and seat belt or helmet use.

### **KABCO Injury Indicator:**

K = Killed

A = Suspected Serious Injury

B = Suspected Minor Injury

C = Possible Injury

O = No Injury

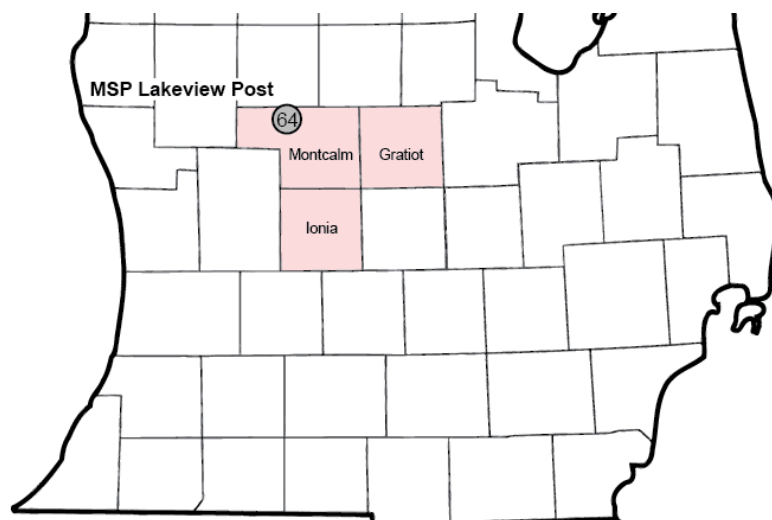
Property Damage Only (PDO)



## Michigan State Police (MSP) Post 64 - Lakeview

### 2017 Traffic Crash Data & 2013-2017 5-Year Trends

Post 64 is comprised of Gratiot, Ionia, and Montcalm counties. Trend tables for this report are based on those counties.



### Sources:

The crashes in this report occurred on public roadways in Michigan and resulted in injuries, fatalities, or property damage (with \$1,000 as a reporting threshold). The information was gathered from Michigan Traffic Crash Report Forms (UD-10) submitted by local police departments, sheriff's offices, and the Michigan State Police. Other related information was obtained from the departments of Transportation, State, and Community Health.

This page left intentionally blank

## MSP Post 64 - Lakeview

- There were 5,556 crashes in Post 64 during 2017. [Page 1]
- A total of 38 fatalities resulted from 34 fatal crashes in 2017 in Post 64. [Page 1]
- There were 1,123 injuries and 798 injury crashes. [Page 1]
- There were 4,724 property damage only crashes (no fatalities or injuries). [Page 1]
- December had the highest number of crashes (771). [Pages 1-2]
- April had the highest number of fatal crashes (5) while October and April had the highest number of fatalities (5). [Pages 1-2]
- December had the highest number of injury crashes (100) and injuries (137). [Page 1]
- December had the highest number of property damage only crashes (670). [Page 1]
- Of all vehicles involved in fatal crashes, 5 (9.6%) were motorcycles. [Page 1]
- Friday was the day of the week with the highest number of crashes (887) and Wednesday had the highest number of fatal crashes (9). [Pages 2-3]
- The 6:00 PM - 8:59 PM time period had the highest number of crashes (1,040). This holds true for every year between 2013 and 2017. The 6:00 PM - 8:59 PM time period had the highest number of fatal crashes (6). [Pages 5-6]
- During the period from 2013 to 2017, the highest number of deer crashes occurred in 2013 (2,538). The 6:00 PM - 8:59 PM time period consistently had the highest number of deer-involved crashes during the five-year period. There were fatal crashes involving deer in 2017. [Pages 7-8]
- Montcalm County (40.0%) had the highest number of crashes in Post 64 in 2017, followed by Ionia County (31.5%), and Gratiot County (28.5%). [Page 8]
- Montcalm County (60.5%) had the highest number of fatalities in Post 64 in 2017, followed by Ionia County (26.3%), and Gratiot County (13.2%). [Page 8]
- The highest number of drivers in crashes (7,319) occurred during 2017 and the highest number of drivers coded drinking in crashes (199) occurred during 2017 within the five year period between 2013 and 2017. [Page 9]
- A total of 203 crashes involved alcohol in 2017. [Page 10]
- Alcohol-involved fatal crashes were the highest in 2017 during the five-year period from 2013 to 2017 at 11. [Page 10]
- A total of 51 crashes, 6 fatal crashes, and 11 suspected serious injury crashes involved drugs in 2017. [Page 11]
- There were 6,747 drivers wearing seatbelts and 66 drivers not wearing seatbelts in crashes in 2017. Of the 66 drivers not wearing seat belts, 4 (6.1%) were killed and 28 (42.4%) were injured. [Pages 14-16]
- The most common hazardous action coded for drivers in 2017 in all crashes was speed too fast (799), while the most common hazardous action coded for drivers in fatal crashes was unknown and careless/negligent driving (5). [Page 17]

# MSP Post 64 - Lakeview (continued)

## Post 64 Experience

In 2017:

There were 7,319 drivers involved in 5,556 motor vehicle crashes in MSP Post 64. Of those crashes, 34 were classified as fatal, resulting in 38 fatalities. An additional 1,123 persons were injured.

Post 64 experienced the highest number of motor vehicle crashes (771) in December, the highest number of fatal crashes (5) in April and the highest number of persons killed (5) in April and October.

Michigan driver statistics indicate 6.9 percent of licensed drivers in Post 64 were age 16-20, and 11.8 percent of drivers in crashes were also in that age group.

## 2017 - Crashes and Injuries by Month

Month	Crashes				Persons	
	Total	Fatal	Injury	Property Damage Only (PDO)	Fatalities	Injuries
January	515	1	79	435	2	103
February	334	2	50	282	2	73
March	418	3	64	351	3	90
April	315	5	48	262	5	80
May	395	3	57	335	3	70
June	463	4	75	384	4	118
July	363	4	75	284	4	101
August	320	2	66	252	2	102
September	382	2	72	308	2	93
October	609	3	70	536	5	100
November	671	4	42	625	4	56
December	771	1	100	670	2	137
<b>Total</b>	<b>5,556</b>	<b>34</b>	<b>798</b>	<b>4,724</b>	<b>38</b>	<b>1,123</b>

## 2017 - Driver Statistics

Age Group	Post 64			Driver Rates	
	2017 Population	Licensed Drivers	Drivers in Crashes	Per 10k Population	Per 10k Licensed
0 - 15	32,446	953	17	5.2	178.4
16 - 20	11,061	8,172	860	777.5	1,052.4
21 - 24	9,079	7,140	736	810.7	1,030.8
25 - 64	89,235	76,725	4,650	521.1	606.1
65 +	27,038	24,647	787	291.1	319.3
Unknown	0	0	269	--	--
<b>Total</b>	<b>168,859</b>	<b>117,637</b>	<b>7,319</b>	<b>433.4</b>	<b>622.2</b>

## 2017 - Vehicles in Crashes

Vehicle Type	Motor Vehicles		Fatal Crashes		Injury Crashes	PDO Crashes
	Number of Vehicles	% of Total	Number	% of Total	Number	Number
Passenger car, SUV, van	5,560	76.0	31	59.6	943	4,586
Motor home	19	0.3	0	0.0	4	15
Pickup truck	1,311	17.9	10	19.2	214	1,087
Small truck under 10,000 lbs. GVWR	45	0.6	1	1.9	9	35
Motorcycle	52	0.7	5	9.6	36	11
Moped / goped	5	0.1	1	1.9	4	0
Go-cart / golf cart	1	0.0	0	0.0	0	1
Snowmobile	1	0.0	0	0.0	1	0
Off-Road Vehicle - ORV / All-Terrain Vehicle - ATV	11	0.2	1	1.9	8	2
Other	28	0.4	0	0.0	5	23
Truck/bus over 10,000 lbs.	189	2.6	3	5.8	36	150
Unknown	97	1.3	0	0.0	2	95
<b>Total</b>	<b>7,319</b>	<b>100.0</b>	<b>52</b>	<b>100.0</b>	<b>1,262</b>	<b>6,005</b>

## 5-Year Trend - Crashes by Month

Month	2013		2014		2015		2016		2017	
	Total Crashes	Fatal Crashes	Total Crashes	Fatal Crashes	Total Crashes	Fatal Crashes	Total Crashes	Fatal Crashes	Total Crashes	Fatal Crashes
January	510	2	619	0	547	3	555	1	515	1
February	555	2	487	2	397	0	434	1	334	2
March	458	0	412	4	338	1	384	0	418	3
April	332	0	266	0	306	1	324	0	315	5
May	405	2	371	0	382	3	394	1	395	3
June	386	1	392	2	389	0	378	0	463	4
July	359	1	344	0	399	1	337	4	363	4
August	300	2	282	4	320	2	331	3	320	2
September	374	2	321	0	337	2	407	1	382	2
October	556	2	611	2	591	1	586	1	609	3
November	718	0	800	2	673	1	713	2	671	4
December	603	2	397	0	413	2	649	0	771	1
<b>Total</b>	<b>5,556</b>	<b>16</b>	<b>5,302</b>	<b>16</b>	<b>5,092</b>	<b>17</b>	<b>5,492</b>	<b>14</b>	<b>5,556</b>	<b>34</b>

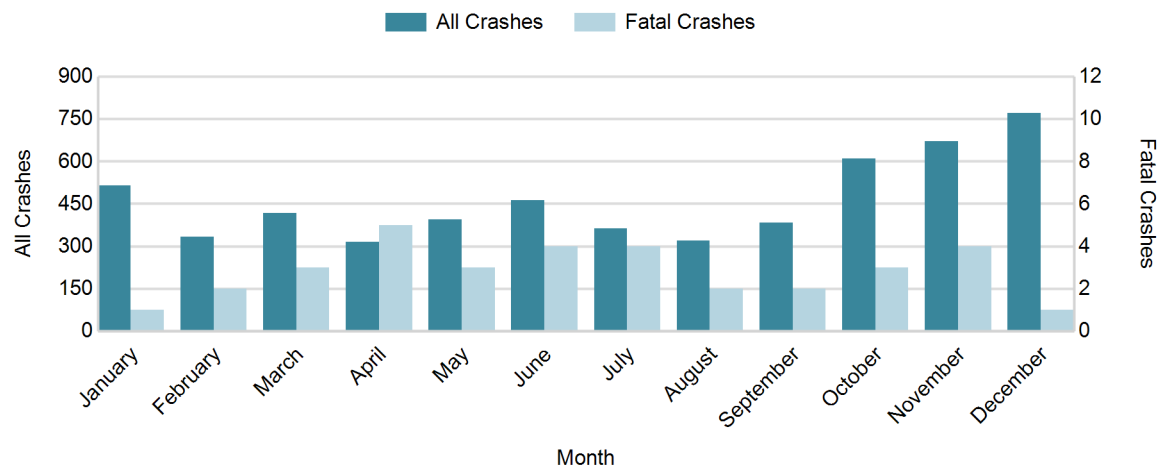
Note: † Indicates that the highest number of total crashes reported in the 5-year period occurred in the same month

## 5-Year Trend - Crashes by Day of Week

Day	2013		2014		2015		2016		2017	
	Total Crashes	Fatal Crashes	Total Crashes	Fatal Crashes	Total Crashes	Fatal Crashes	Total Crashes	Fatal Crashes	Total Crashes	Fatal Crashes
Monday	845	4	706	4	711	4	770	4	784	3
Tuesday	818	1	715	1	749	2	806	2	832	4
Wednesday	780	1	801	1	759	1	857	1	816	9
Thursday	833	3	752	0	702	2	788	1	798	6
Friday	869 †	1	924 †	4	791 †	2	871 †	4	887 †	1
Saturday	760	2	728	1	751	2	734	0	753	6
Sunday	651	4	676	5	629	4	666	2	686	5
<b>Total</b>	<b>5,556</b>	<b>16</b>	<b>5,302</b>	<b>16</b>	<b>5,092</b>	<b>17</b>	<b>5,492</b>	<b>14</b>	<b>5,556</b>	<b>34</b>

Note: † Indicates that the highest number of total crashes reported in the 5-year period occurred on the same day of the week

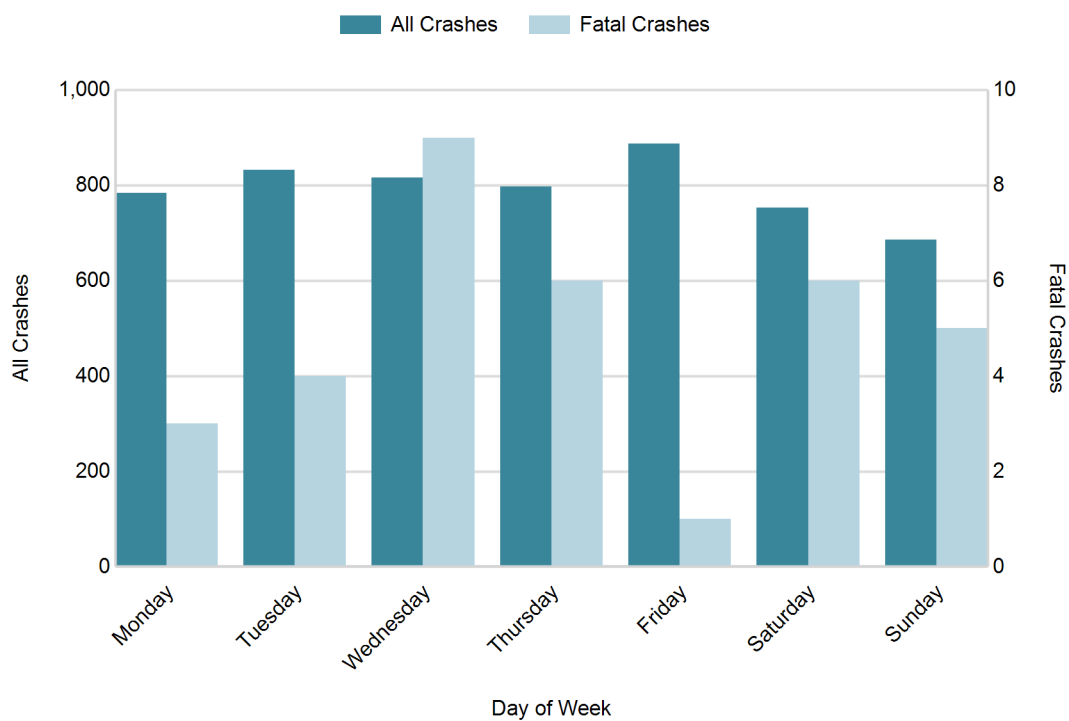
## 2017 Crashes by Month



## 2017 - Crashes by Day of Week

Day	All Crashes		Fatal Crashes		Injury Crashes			PDO Crashes
	Number	% of Total	Number	% of Fatal	A	B	C	Number
Monday	784	14.1	3	8.8	18	36	70	657
Tuesday	832	15.0	4	11.8	15	39	52	722
Wednesday	816	14.7	9	26.5	12	30	58	707
Thursday	798	14.4	6	17.6	22	50	68	652
Friday	887	16.0	1	2.9	23	37	60	766
Saturday	753	13.6	6	17.6	18	30	52	647
Sunday	686	12.3	5	14.7	16	30	62	573
<b>Total</b>	<b>5,556</b>	<b>100.0</b>	<b>34</b>	<b>100.0</b>	<b>124</b>	<b>252</b>	<b>422</b>	<b>4,724</b>

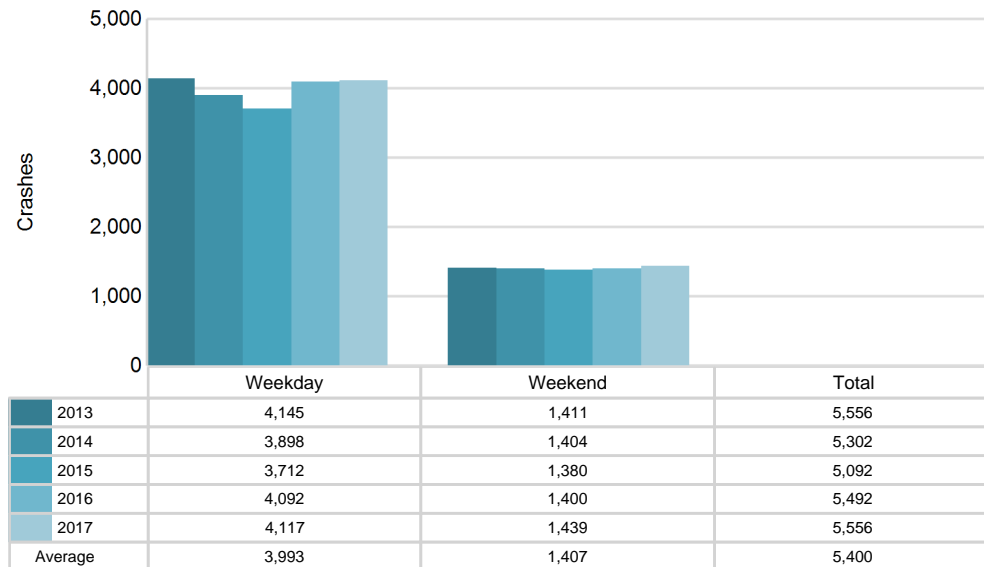
## 2017 Day of Week and Severity



## 5-Year Trend - Crashes by Weekday and Weekend

Portion of Week	2013		2014		2015		2016		2017	
	Total Crashes	Fatal Crashes	Total Crashes	Fatal Crashes	Total Crashes	Fatal Crashes	Total Crashes	Fatal Crashes	Total Crashes	Fatal Crashes
Weekday	4,145	10	3,898	10	3,712	11	4,092	12	4,117	23
Weekend	1,411	6	1,404	6	1,380	6	1,400	2	1,439	11
<b>Total</b>	<b>5,556</b>	<b>16</b>	<b>5,302</b>	<b>16</b>	<b>5,092</b>	<b>17</b>	<b>5,492</b>	<b>14</b>	<b>5,556</b>	<b>34</b>

## 5-Year Crash Trends by Weekday (Monday - Friday) and Weekend (Saturday & Sunday)

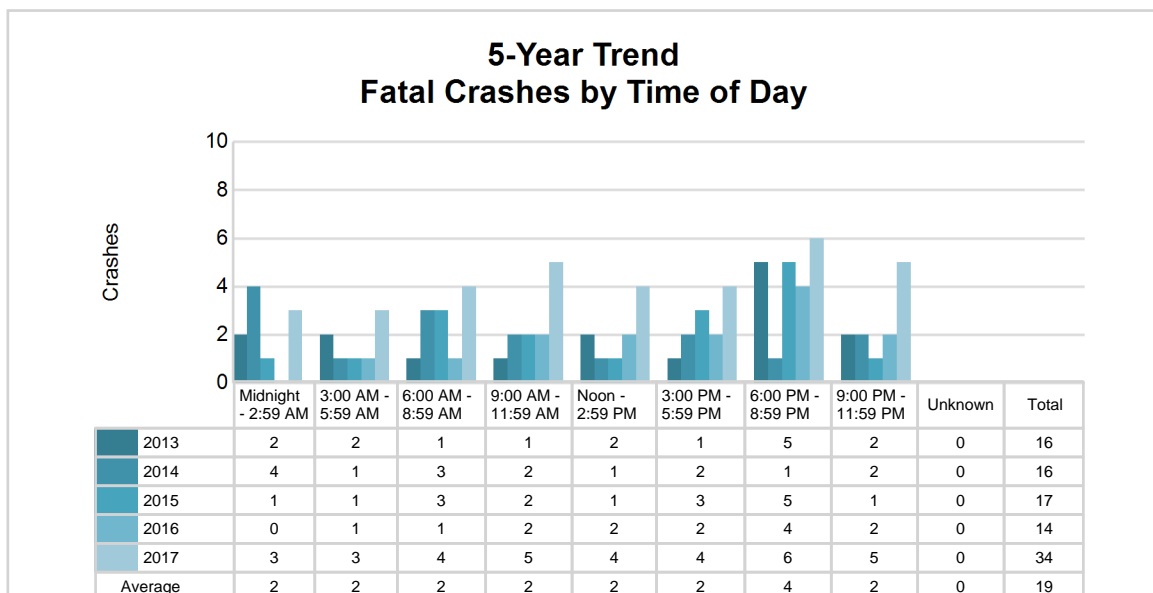
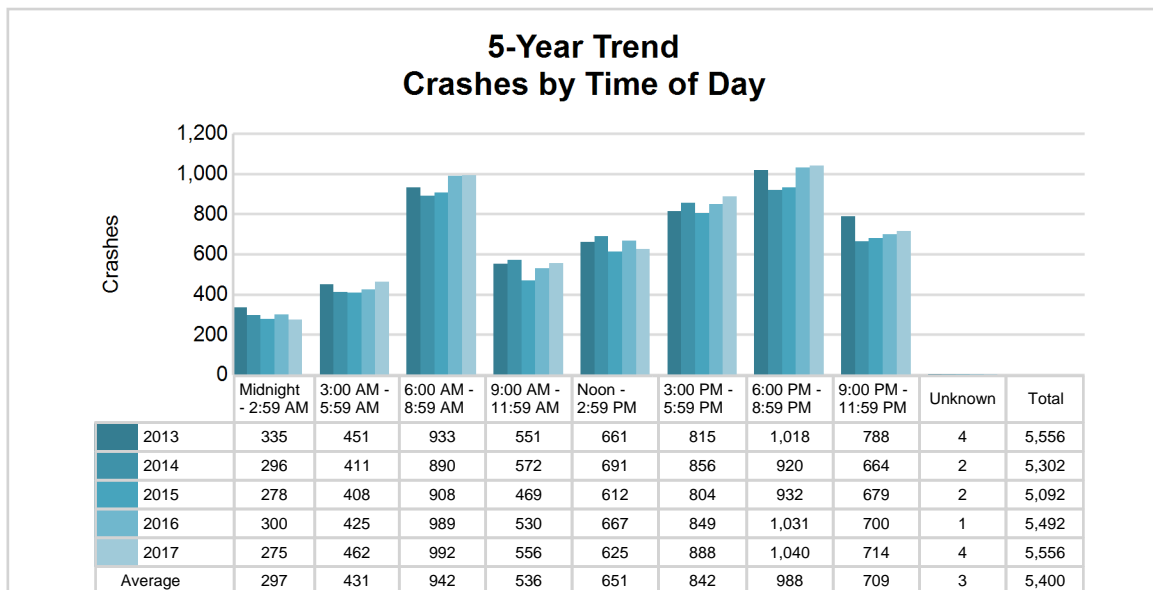


# MSP Post 64 - Lakeview (continued)

## 5-Year Trend - Crashes by Time of Day

Time of Day	2013		2014		2015		2016		2017	
	Total Crashes	Fatal Crashes	Total Crashes	Fatal Crashes	Total Crashes	Fatal Crashes	Total Crashes	Fatal Crashes	Total Crashes	Fatal Crashes
Midnight - 2:59 AM	335	2	296	4	278	1	300	0	275	3
3:00 AM - 5:59 AM	451	2	411	1	408	1	425	1	462	3
6:00 AM - 8:59 AM	933	1	890	3	908	3	989	1	992	4
9:00 AM - 11:59 AM	551	1	572	2	469	2	530	2	556	5
Noon - 2:59 PM	661	2	691	1	612	1	667	2	625	4
3:00 PM - 5:59 PM	815	1	856	2	804	3	849	2	888	4
6:00 PM - 8:59 PM	1,018 †	5	920 †	1	932 †	5	1,031 †	4	1,040 †	6
9:00 PM - 11:59 PM	788	2	664	2	679	1	700	2	714	5
Unknown	4	0	2	0	2	0	1	0	4	0
<b>Total</b>	<b>5,556</b>	<b>16</b>	<b>5,302</b>	<b>16</b>	<b>5,092</b>	<b>17</b>	<b>5,492</b>	<b>14</b>	<b>5,556</b>	<b>34</b>

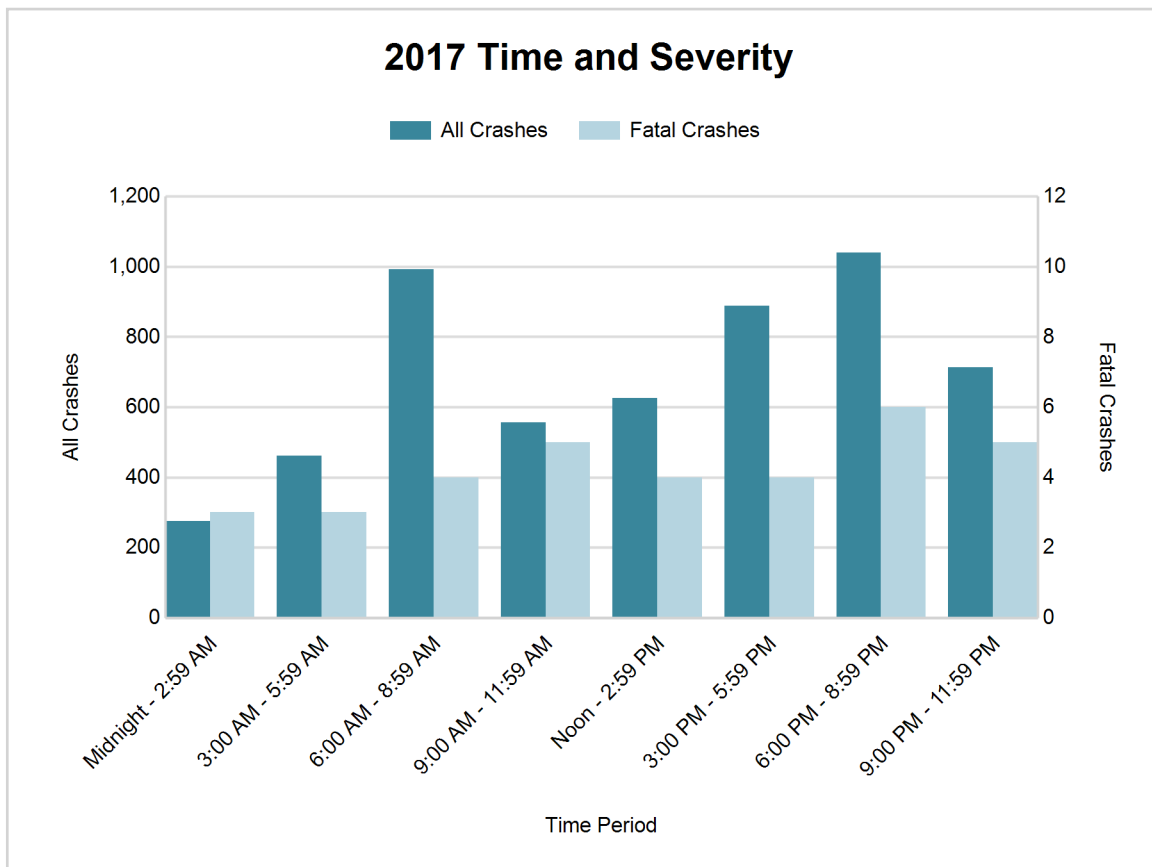
Note: † Indicates that the highest number of total crashes reported in the 5-year period occurred in the same time period





## 2017 - Time and Severity

Time of Day	All Crashes		Fatal Crashes		Injury Crashes			PDO Crashes
	Number	% of Total	Number	% of Fatal	A	B	C	Number
Midnight - 2:59 AM	275	4.9	3	8.8	8	11	15	238
3:00 AM - 5:59 AM	462	8.3	3	8.8	6	12	16	425
6:00 AM - 8:59 AM	992	17.9	4	11.8	14	39	59	876
9:00 AM - 11:59 AM	556	10.0	5	14.7	15	14	57	465
Noon - 2:59 PM	625	11.2	4	11.8	13	51	81	476
3:00 PM - 5:59 PM	888	16.0	4	11.8	30	62	94	698
6:00 PM - 8:59 PM	1,040	18.7	6	17.6	24	41	71	898
9:00 PM - 11:59 PM	714	12.9	5	14.7	14	22	29	644
Unknown	4	0.1	0	0.0	0	0	0	4
<b>Total</b>	<b>5,556</b>	<b>100.0</b>	<b>34</b>	<b>100.0</b>	<b>124</b>	<b>252</b>	<b>422</b>	<b>4,724</b>

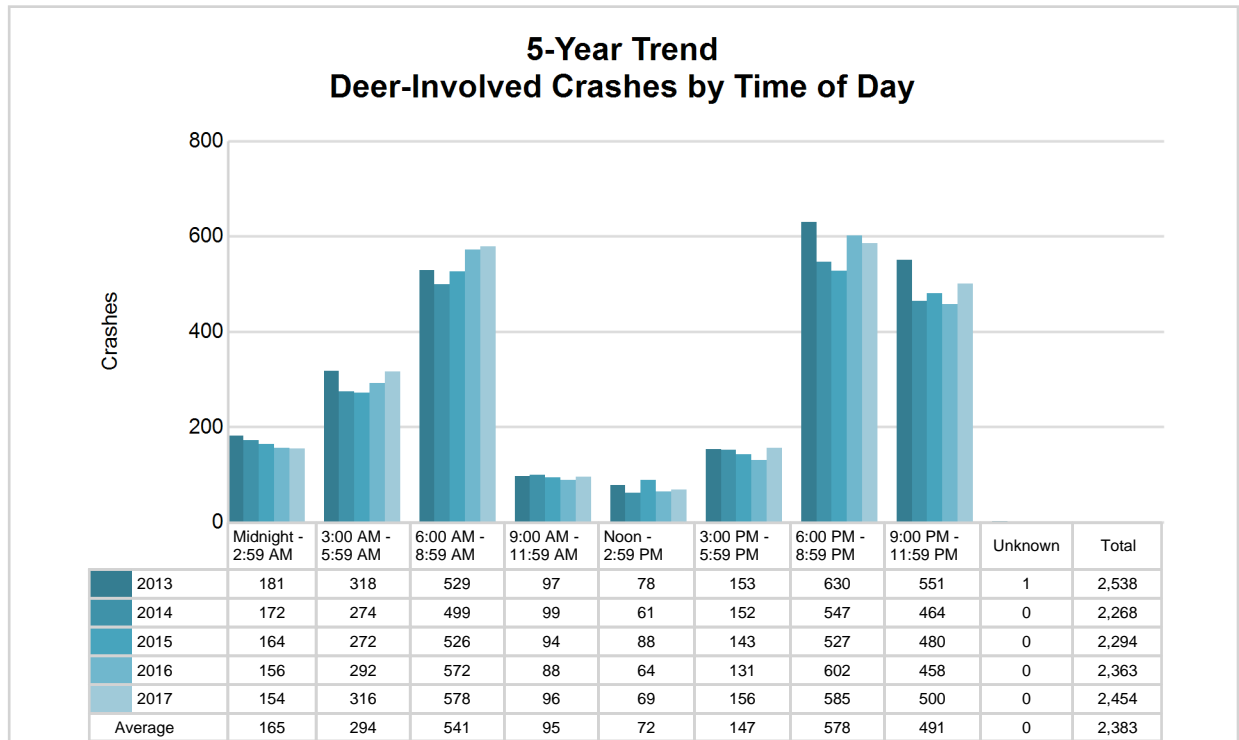


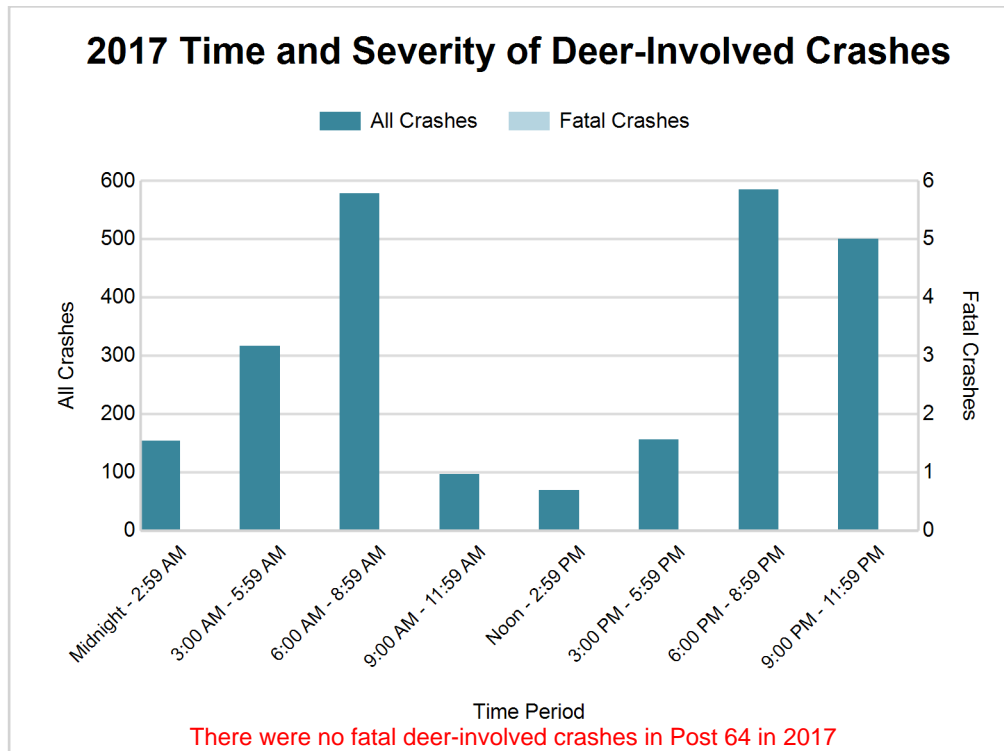
# MSP Post 64 - Lakeview (continued)

## 5-Year Trend - Deer-Involved Crashes by Time of Day

Time of Day	2013		2014		2015		2016		2017	
	Total Crashes	Fatal Crashes	Total Crashes	Fatal Crashes	Total Crashes	Fatal Crashes	Total Crashes	Fatal Crashes	Total Crashes	Fatal Crashes
Midnight - 2:59 AM	181	0	172	0	164	0	156	0	154	0
3:00 AM - 5:59 AM	318	0	274	0	272	0	292	0	316	0
6:00 AM - 8:59 AM	529	0	499	0	526	0	572	0	578	0
9:00 AM - 11:59 AM	97	0	99	0	94	0	88	0	96	0
Noon - 2:59 PM	78	0	61	0	88	0	64	0	69	0
3:00 PM - 5:59 PM	153	0	152	0	143	0	131	0	156	0
6:00 PM - 8:59 PM	630 †	0	547 †	0	527 †	0	602 †	0	585 †	0
9:00 PM - 11:59 PM	551	0	464	0	480	0	458	0	500	0
Unknown	1	0	0	0	0	0	0	0	0	0
<b>Total</b>	<b>2,538</b>	<b>0</b>	<b>2,268</b>	<b>0</b>	<b>2,294</b>	<b>0</b>	<b>2,363</b>	<b>0</b>	<b>2,454</b>	<b>0</b>

Note: † Indicates that the highest number of total crashes reported in the 5-year period occurred in the same time period





## 2017 - Reported Motor Vehicle Crashes by County

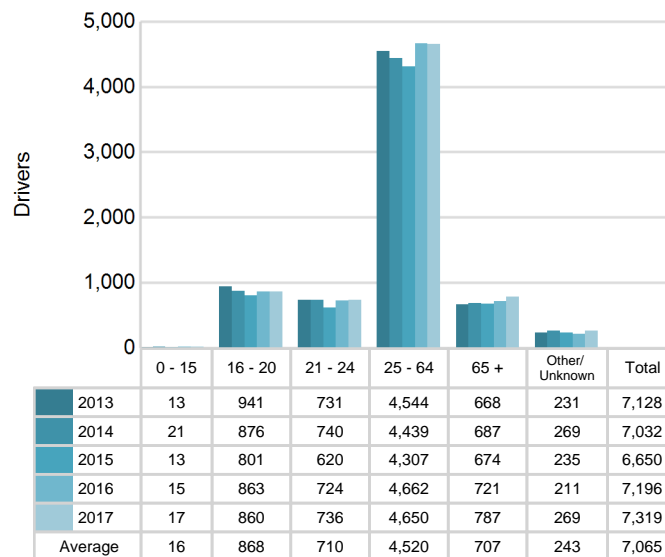
County	Crashes											Persons	
	Total	Fatal	Injury	Property Damage	Inter-state	US Route	State Route	Local Street	Alcohol-Involved	Drug-Involved	Deer-Involved	Fatalities	Injuries
Gratiot	1,585	5	166	1,414	0	395	267	922	47	13	908	5	236
Ionia	1,749	10	292	1,447	401	0	522	823	76	14	471	10	392
Montcalm	2,222	19	340	1,863	0	142	792	1,286	80	24	1,075	23	495
<b>Total</b>	<b>5,556</b>	<b>34</b>	<b>798</b>	<b>4,724</b>	<b>401</b>	<b>537</b>	<b>1,581</b>	<b>3,031</b>	<b>203</b>	<b>51</b>	<b>2,454</b>	<b>38</b>	<b>1,123</b>

# MSP Post 64 - Lakeview (continued)

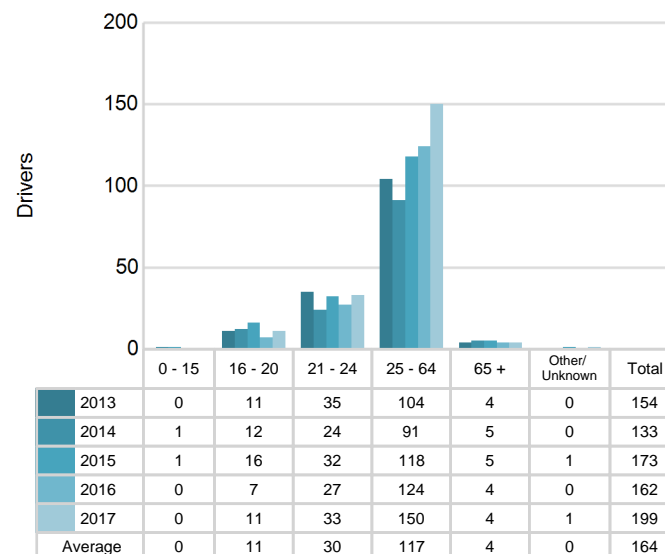
## 5-Year Trend - Drivers in Crashes Coded Drinking by Driver Age

Driver Age	2013		2014		2015		2016		2017	
	Total Drivers in Crashes	Total Drivers Coded Drinking	Total Drivers in Crashes	Total Drivers Coded Drinking	Total Drivers in Crashes	Total Drivers Coded Drinking	Total Drivers in Crashes	Total Drivers Coded Drinking	Total Drivers in Crashes	Total Drivers Coded Drinking
0 - 15	13	0	21	1	13	1	15	0	17	0
16 - 20	941	11	876	12	801	16	863	7	860	11
21 - 24	731	35	740	24	620	32	724	27	736	33
25 - 64	4,544	104	4,439	91	4,307	118	4,662	124	4,650	150
65 +	668	4	687	5	674	5	721	4	787	4
Unknown	231	0	269	0	235	1	211	0	269	1
<b>Total</b>	<b>7,128</b>	<b>154</b>	<b>7,032</b>	<b>133</b>	<b>6,650</b>	<b>173</b>	<b>7,196</b>	<b>162</b>	<b>7,319</b>	<b>199</b>

### 5-Year Trend Total Drivers in Crashes by Age



### 5-Year Trend Total Drivers Coded Drinking by Age



## 2017 - Bodily Alcohol Concentration (BAC) Results Among All Vehicle Drivers in Alcohol-Involved Crashes by Age

Age Group	Drivers				BAC Result Range for Drivers Coded Drinking				
	Total Drivers in Alcohol-Involved Crashes	Total Drivers Tested in all Crashes	Total Drivers Coded Drinking, Tested	Total Drivers Coded Drinking	BAC = 0.00	BAC 0.01 g/dL to 0.07 g/dL	BAC 0.08 g/dL to 0.16 g/dL	BAC 0.17 g/dL and Above	BAC Not Reported
0 - 15	0	0	0	0	0	0	0	0	0
16 - 20	16	20	11	11	0	0	3	1	7
21 - 24	37	30	26	33	1	3	11	4	14
25 - 64	183	138	104	150	0	12	33	31	74
65 +	13	12	3	4	0	0	0	2	2
Unknown	5	0	0	1	0	0	0	0	1
<b>Total</b>	<b>254</b>	<b>200</b>	<b>144</b>	<b>199</b>	<b>1</b>	<b>15</b>	<b>47</b>	<b>38</b>	<b>98</b>

Notes: BAC measured in grams (g) per deciliter (dL).

BAC may not be reported if drivers are not tested or if the results are not available immediately (as in the case of a blood test).

A driver may be coded by the officer as drinking even though no test is administered.

## Alcohol-Involved Crashes

In 2017, there were 254 drivers in alcohol-involved crashes; 199 (78.3%) of those drivers were coded as had-been-drinking by the officer on the crash form.

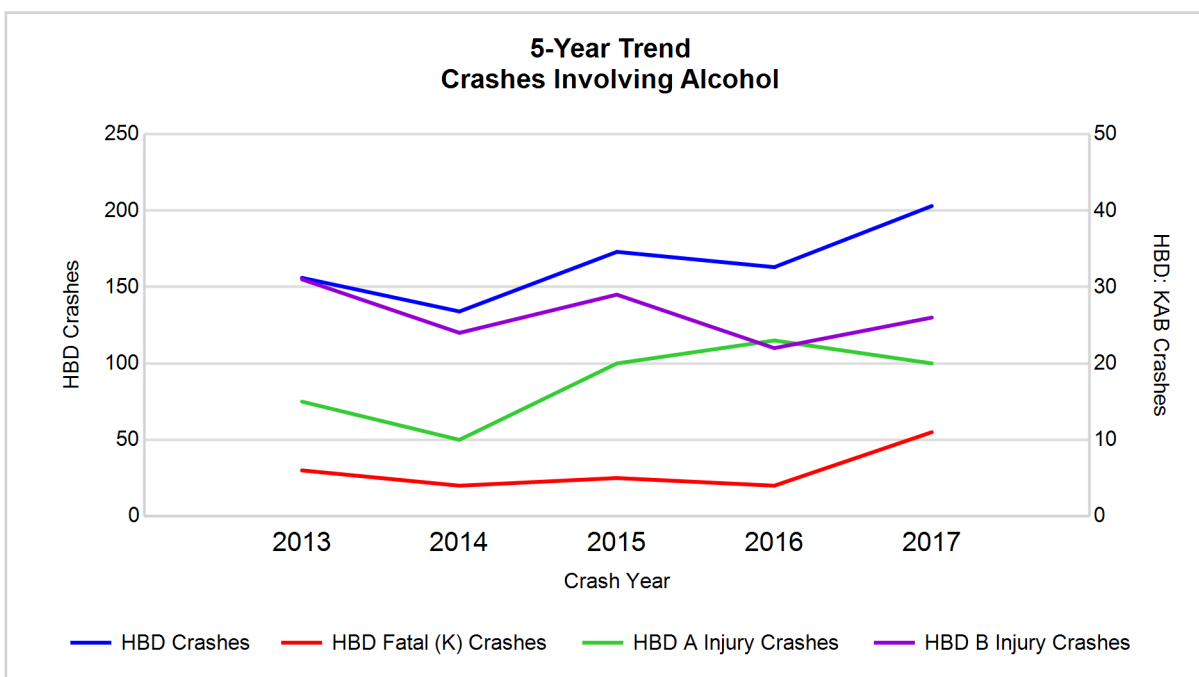
- 85 (42.7%) of the 199 drivers had a blood alcohol concentration (BAC) of 0.08 g/dL (grams per deciliter) or greater, and 38 (44.7%) of the 85 drivers had a BAC at or above 0.17 g/dL.
- 144 (72.4%) of the 199 drivers were coded as had-been-drinking and were tested for alcohol consumption.

## 5-Year Trend - Crashes Involving Alcohol

Year	All Crashes	HBD Crashes	% HBD	Fatal Crashes	HBD Fatal Crashes	% HBD	A Injury Crashes	HBD A Injury Crashes	% HBD	B Injury Crashes	HBD B Injury Crashes	% HBD
2013	5,556	156	2.8	16	6	37.5	107	15	14.0	239	31	13.0
2014	5,302	134	2.5	16	4	25.0	95	10	10.5	242	24	9.9
2015	5,092	173	3.4	17	5	29.4	117	20	17.1	238	29	12.2
2016	5,492	163	3.0	14	4	28.6	136	23	16.9	269	22	8.2
2017	5,556	203**	3.7**	34**	11**	32.4	124	20	16.1	252	26	10.3

Note: \* Indicates that the most recent year is the lowest number or percentage reported in the 5-year period in that column

\*\* Indicates that the most recent year is the highest number or percentage reported in the 5-year period in that column



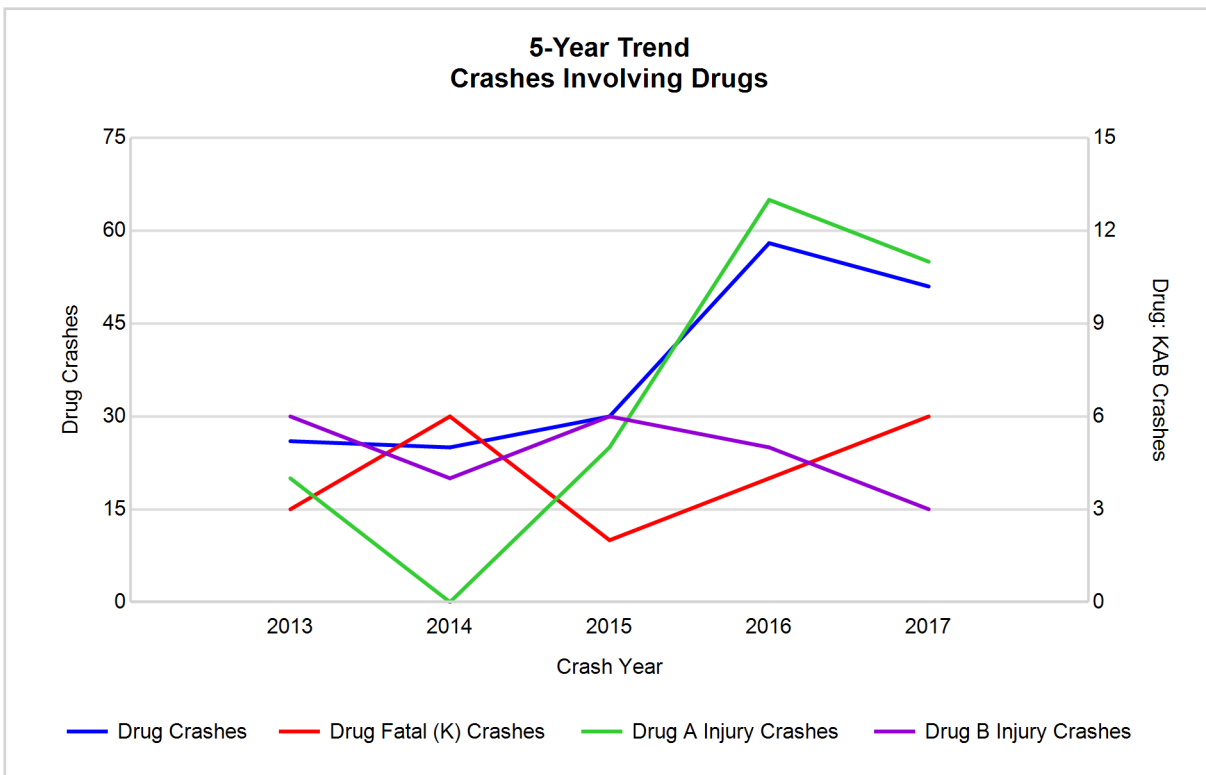
Note: Had-Been-Drinking (HBD)

## 5-Year Trend - Crashes Involving Drugs

Year	All Crashes	Drug Crashes	% Drug	Fatal Crashes	Drug Fatal Crashes	% Drug	A Injury Crashes	Drug A Injury Crashes	% Drug	B Injury Crashes	Drug B Injury Crashes	% Drug
2013	5,556	26	0.5	16	3	18.8	107	4	3.7	239	6	2.5
2014	5,302	25	0.5	16	6	37.5	95	0	0.0	242	4	1.7
2015	5,092	30	0.6	17	2	11.8	117	5	4.3	238	6	2.5
2016	5,492	58	1.1	14	4	28.6	136	13	9.6	269	5	1.9
2017	5,556	51	0.9	34**	6	17.6	124	11	8.9	252	3*	1.2*

Note: \* Indicates that the most recent year is the lowest number or percentage reported in the 5-year period in that column

\*\* Indicates that the most recent year is the highest number or percentage reported in the 5-year period in that column

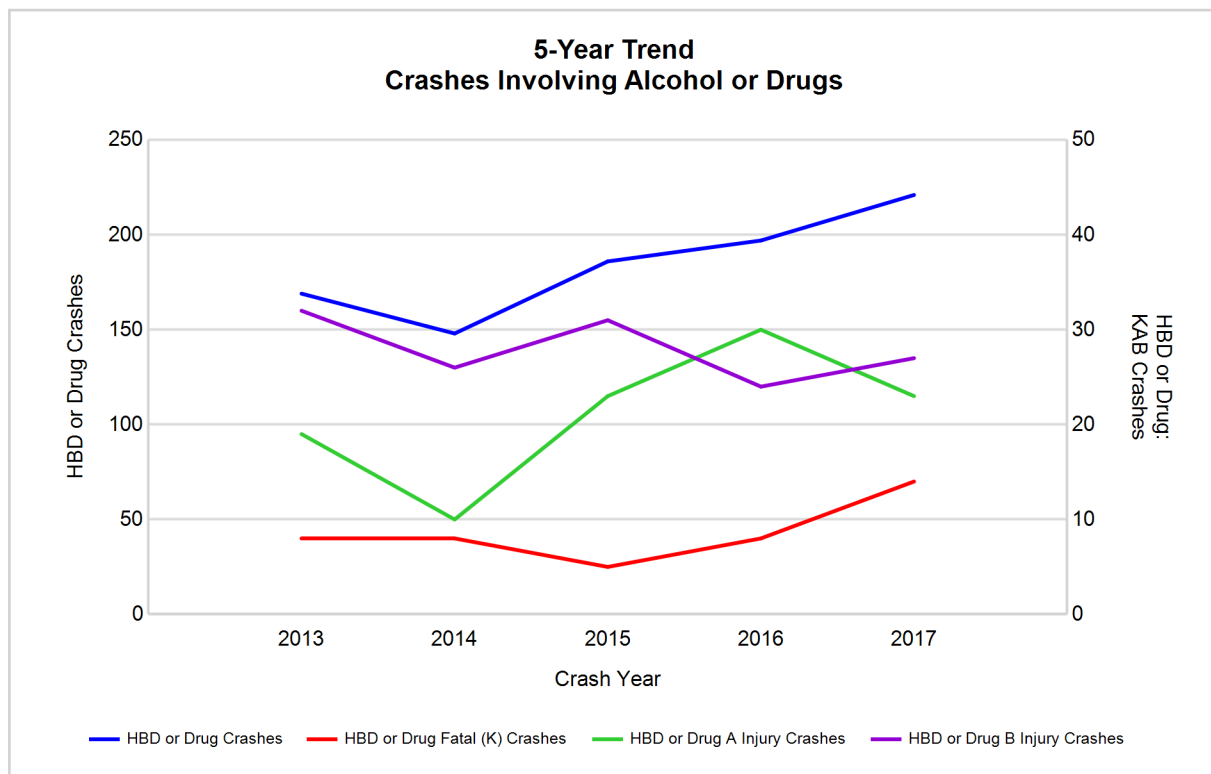


## 5-Year Trend - Crashes Involving Alcohol or Drugs

Year	All Crashes	HBD or Drug Crashes	% HBD or Drug	Fatal Crashes	HBD or Drug Fatal Crashes	% HBD or Drug	A Injury Crashes	HBD or Drug A Injury Crashes	% HBD or Drug	B Injury Crashes	HBD or Drug B Injury Crashes	% HBD or Drug
2013	5,556	169	3.0	16	8	50.0	107	19	17.8	239	32	13.4
2014	5,302	148	2.8	16	8	50.0	95	10	10.5	242	26	10.7
2015	5,092	186	3.7	17	5	29.4	117	23	19.7	238	31	13.0
2016	5,492	197	3.6	14	8	57.1	136	30	22.1	269	24	8.9
2017	5,556	221**	4.0**	34**	14**	41.2	124	23	18.5	252	27	10.7

Note: \* Indicates that the most recent year is the lowest number or percentage reported in the 5-year period in that column

\*\* Indicates that the most recent year is the highest number or percentage reported in the 5-year period in that column



## 2017 - Restraints Worn Among Vehicle Drivers and Injured Passengers by Vehicle Type

Vehicle Type	Total Occupants			Fatalities			A - Suspected Serious			B - Suspected Minor			C - Possible Injury			No Injury		
	Total	Used Restraint	%	Total	Used Restraint	%	Total	Used Restraint	%	Total	Used Restraint	%	Total	Used Restraint	%	Total	Used Restraint	%
Passenger car, SUV, van	5,815	5,485	94.3	19	9	47.4	105	83	79.0	255	223	87.5	476	463	97.3	4,835	4,704	97.3
Motor home	20	19	95.0	0	0	0.0	0	0	0.0	1	0	0.0	1	1	100.0	18	18	100.0
Pickup truck	1,364	1,257	92.2	3	2	66.7	25	15	60.0	59	49	83.1	90	85	94.4	1,147	1,106	96.4
Small truck under 10,000 lbs. GVWR	45	42	93.3	0	0	0.0	1	1	100.0	2	2	100.0	2	2	100.0	37	37	100.0
Motorcycle	58	26	44.8	5	0	0.0	18	8	44.4	14	8	57.1	8	4	50.0	10	6	60.0
Moped / goped	5	2	40.0	1	0	0.0	1	0	0.0	1	0	0.0	2	2	100.0	0	0	0.0
Go-cart / golf cart	1	0	0.0	0	0	0.0	0	0	0.0	0	0	0.0	0	0	0.0	0	0	0.0
Snowmobile	1	1	100.0	0	0	0.0	1	1	100.0	0	0	0.0	0	0	0.0	0	0	0.0
Off-Road Vehicle - ORV / All-Terrain Vehicle - ATV	14	8	57.1	1	0	0.0	4	0	0.0	0	0	0.0	4	4	100.0	5	4	80.0
Other	28	19	67.9	0	0	0.0	1	0	0.0	0	0	0.0	2	2	100.0	21	17	81.0
Truck/bus over 10,000 lbs.	196	184	93.9	1	1	100.0	2	1	50.0	2	0	0.0	10	6	60.0	177	176	99.4
Unknown	97	0	0.0	0	0	0.0	0	0	0.0	0	0	0.0	0	0	0.0	0	0	0.0
<b>Total</b>	<b>7,644</b>	<b>7,043</b>	<b>92.1</b>	<b>30</b>	<b>12</b>	<b>40.0</b>	<b>158</b>	<b>109</b>	<b>69.0</b>	<b>334</b>	<b>282</b>	<b>84.4</b>	<b>595</b>	<b>569</b>	<b>95.6</b>	<b>6,250</b>	<b>6,068</b>	<b>97.1</b>

Note: Restraint Use includes shoulder belt only used, lap belt only used, both lap and shoulder belts used, child restraint used, restraint failure, and helmet worn.

## 2017 - Restraints Worn Among Vehicle Drivers and Injured Passengers by Age

Age Group	Total Occupants			Fatalities			A - Suspected Serious			B - Suspected Minor			C - Possible Injury			No Injury		
	Total	Used Restraint	%	Total	Used Restraint	%	Total	Used Restraint	%	Total	Used Restraint	%	Total	Used Restraint	%	Total	Used Restraint	%
0 - 15	102	90	88.2	0	0	0.0	7	6	85.7	31	24	77.4	54	50	92.6	10	10	100.0
16 - 20	925	886	95.8	2	1	50.0	29	23	79.3	70	57	81.4	101	98	97.0	723	707	97.8
21 - 24	760	721	94.9	3	1	33.3	11	7	63.6	28	23	82.1	62	57	91.9	654	632	96.6
25 - 64	4,775	4,549	95.3	22	7	31.8	91	55	60.4	166	144	86.7	315	301	95.6	4,170	4,040	96.9
65 +	813	797	98.0	3	3	100.0	20	18	90.0	39	34	87.2	63	63	100.0	688	679	98.7
Unknown	269	0	0.0	0	0	0.0	0	0	0.0	0	0	0.0	0	0	0.0	5	0	0.0
<b>Total</b>	<b>7,644</b>	<b>7,043</b>	<b>92.1</b>	<b>30</b>	<b>12</b>	<b>40.0</b>	<b>158</b>	<b>109</b>	<b>69.0</b>	<b>334</b>	<b>282</b>	<b>84.4</b>	<b>595</b>	<b>569</b>	<b>95.6</b>	<b>6,250</b>	<b>6,068</b>	<b>97.1</b>

Note: Restraint Use includes shoulder belt only used, lap belt only used, both lap and shoulder belts used, child restraint used, restraint failure, and helmet worn.



## 5-Year Trend - Restraint Use Among Drivers

Restraint Use	2013			2014			2015			2016			2017		
	Drivers	Fatal Drivers	Injured Drivers	Drivers	Fatal Drivers	Injured Drivers	Drivers	Fatal Drivers	Injured Drivers	Drivers	Fatal Drivers	Injured Drivers	Drivers	Fatal Drivers	Injured Drivers
No belts available	51	0	10	44	0	5	55	0	5	21	1	6	10	0	1
Shoulder belt only used	4	0	2	2	0	1	3	0	0	23	0	3	21	0	0
Lap belt only used	13	0	4	15	1	2	20	0	3	14	0	4	19	0	1
Both lap & shoulder belts used	6,554	8	628	6,425	3	619	6,074	5	615	6,581	4	659	6,705	11	670
No belts used	46	3	28	57	6	24	55	1	30	60	2	36	56	4	27
Child restraint used	0	0	0	0	0	0	0	0	0	0	0	0	0	0	0
Child restraint not used, unavailable or improper use	0	0	0	0	0	0	0	0	0	0	0	0	0	0	0
Restraint failure	3	0	0	1	0	0	4	0	0	2	0	0	2	0	0
Restraint use unknown	165	0	14	146	0	14	144	3	6	348	0	17	439	3	26
Helmet worn	39	1	26	51	0	39	49	1	35	45	0	38	27	0	21
Helmet not worn	24	3	15	25	1	18	25	2	21	44	3	33	30	7	19
Helmet use unknown	1	0	1	5	0	4	1	0	1	4	0	3	3	0	2
Uncoded & errors	228	0	1	261	0	1	220	0	1	54	0	0	7	0	0
<b>Total</b>	<b>7,128</b>	<b>15</b>	<b>729</b>	<b>7,032</b>	<b>11</b>	<b>727</b>	<b>6,650</b>	<b>12</b>	<b>717</b>	<b>7,196</b>	<b>10</b>	<b>799</b>	<b>7,319</b>	<b>25</b>	<b>767</b>

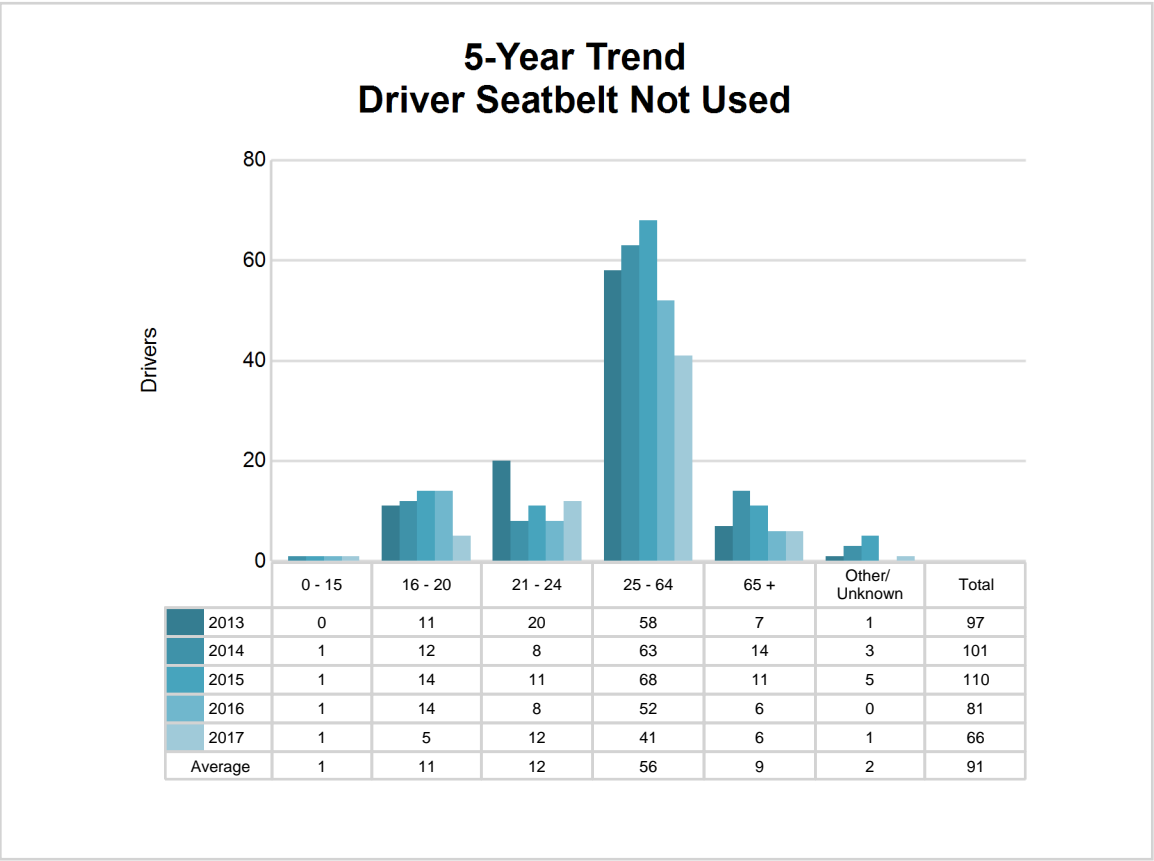
## 5-Year Trend - Restraint Use Among Drivers Coded Drinking

Restraint Use	2013			2014			2015			2016			2017		
	Drivers	Fatal Drivers	Injured Drivers	Drivers	Fatal Drivers	Injured Drivers	Drivers	Fatal Drivers	Injured Drivers	Drivers	Fatal Drivers	Injured Drivers	Drivers	Fatal Drivers	Injured Drivers
No belts available	4	0	2	1	0	0	0	0	0	2	1	1	1	0	0
Shoulder belt only used	0	0	0	0	0	0	0	0	0	0	0	0	0	0	0
Lap belt only used	0	0	0	0	0	0	0	0	0	1	0	1	0	0	0
Both lap & shoulder belts used	97	3	35	96	1	27	134	1	46	112	0	22	131	1	29
No belts used	11	1	9	6	1	4	12	1	7	14	0	12	16	3	8
Child restraint used	0	0	0	0	0	0	0	0	0	0	0	0	0	0	0
Child restraint not used, unavailable or improper use	0	0	0	0	0	0	0	0	0	0	0	0	0	0	0
Restraint failure	1	0	0	0	0	0	1	0	0	0	0	0	0	0	0
Restraint use unknown	33	0	6	23	0	8	23	2	4	16	0	7	47	1	13
Helmet worn	2	0	2	1	0	1	0	0	0	3	0	3	0	0	0
Helmet not worn	5	1	4	6	1	4	2	1	0	14	3	9	4	2	2
Helmet use unknown	0	0	0	0	0	0	1	0	1	0	0	0	0	0	0
Uncoded & errors	1	0	0	0	0	0	0	0	0	0	0	0	0	0	0
<b>Total</b>	<b>154</b>	<b>5</b>	<b>58</b>	<b>133</b>	<b>3</b>	<b>44</b>	<b>173</b>	<b>5</b>	<b>58</b>	<b>162</b>	<b>4</b>	<b>55</b>	<b>199</b>	<b>7</b>	<b>52</b>

5-Year Trend - Seatbelt Not Used Among Drivers by Age

Age Group	2013			2014			2015			2016			2017		
	Drivers	Fatal Drivers	Injured Drivers	Drivers	Fatal Drivers	Injured Drivers	Drivers	Fatal Drivers	Injured Drivers	Drivers	Fatal Drivers	Injured Drivers	Drivers	Fatal Drivers	Injured Drivers
0 - 15	0	0	0	1	1	0	1	0	1	1	0	0	1	0	1
16 - 20	11	0	6	12	0	4	14	0	4	14	0	9	5	0	3
21 - 24	20	0	9	8	0	4	11	0	4	8	0	5	12	1	5
25 - 64	58	3	21	63	3	17	68	1	22	52	1	26	41	3	16
65 +	7	0	1	14	2	4	11	0	4	6	2	2	6	0	3
Unknown	1	0	1	3	0	0	5	0	0	0	0	0	1	0	0
Total	97	3	38	101	6	29	110	1	35	81	3	42	66	4	28

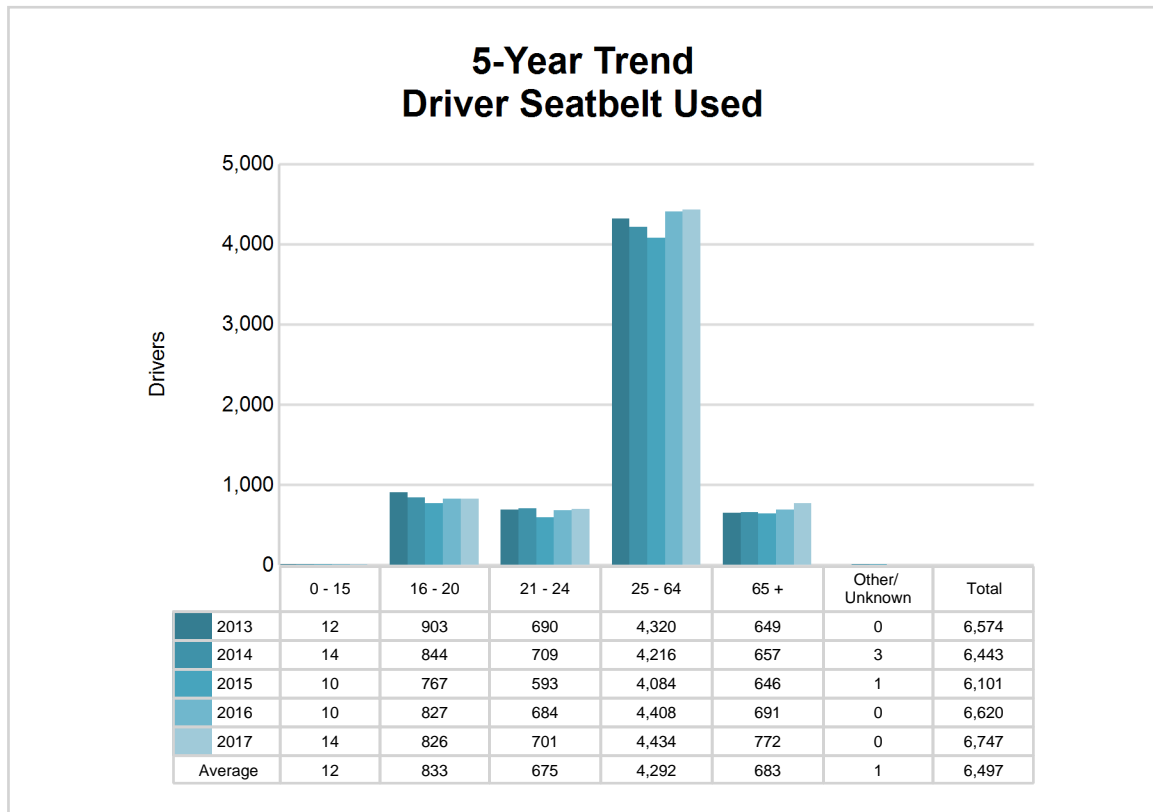
Note: Seatbelt Not Used includes no belts available or no belts used.



## 5-Year Trend - Seatbelt Used Among Drivers by Age

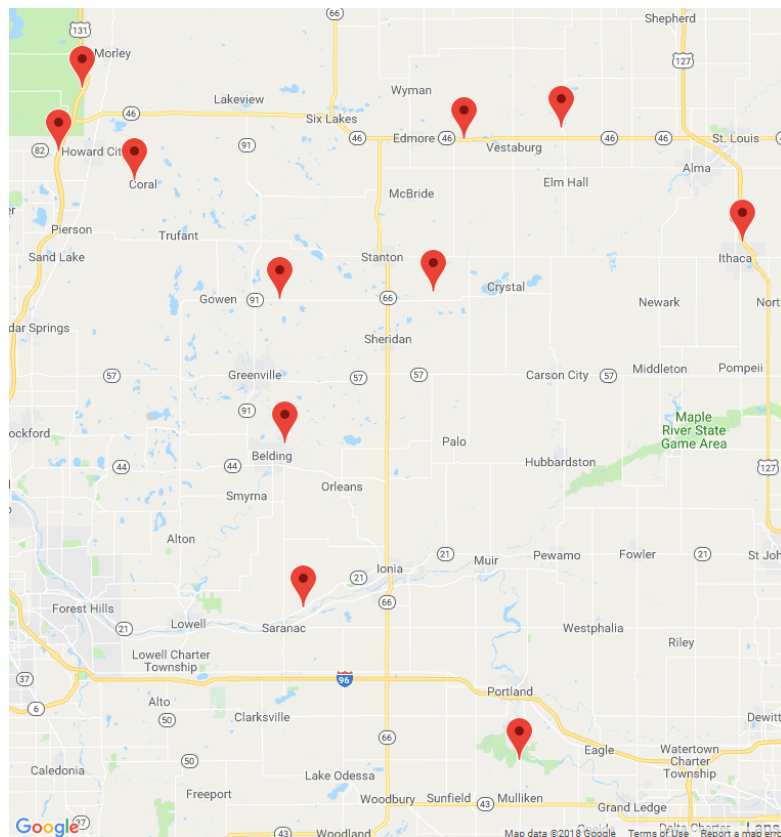
Age Group	2013			2014			2015			2016			2017		
	Drivers	Fatal Drivers	Injured Drivers	Drivers	Fatal Drivers	Injured Drivers	Drivers	Fatal Drivers	Injured Drivers	Drivers	Fatal Drivers	Injured Drivers	Drivers	Fatal Drivers	Injured Drivers
0 - 15	12	0	2	14	0	0	10	0	1	10	0	2	14	0	4
16 - 20	903	1	106	844	0	126	767	0	110	827	0	118	826	1	118
21 - 24	690	0	78	709	1	66	593	1	68	684	0	92	701	1	67
25 - 64	4,320	3	380	4,216	1	358	4,084	2	367	4,408	3	375	4,434	6	390
65 +	649	4	68	657	2	72	646	2	72	691	1	79	772	3	92
Unknown	0	0	0	3	0	0	1	0	0	0	0	0	0	0	0
<b>Total</b>	<b>6,574</b>	<b>8</b>	<b>634</b>	<b>6,443</b>	<b>4</b>	<b>622</b>	<b>6,101</b>	<b>5</b>	<b>618</b>	<b>6,620</b>	<b>4</b>	<b>666</b>	<b>6,747</b>	<b>11</b>	<b>671</b>

Note: Seatbelt Used includes shoulder belt only used, lap belt only used, both lap and shoulder belts used, and restraint failure.



## 5-Year Trend - Drivers in Crashes by Hazardous Action

Hazardous Action	2013		2014		2015		2016		2017	
	Total Drivers in Crashes	Drivers in Fatal Crashes	Total Drivers in Crashes	Drivers in Fatal Crashes	Total Drivers in Crashes	Drivers in Fatal Crashes	Total Drivers in Crashes	Drivers in Fatal Crashes	Total Drivers in Crashes	Drivers in Fatal Crashes
None	4,364	9	4,282	11	4,188	9	4,348	10	4,449	23
Speed too fast	956	2	837	4	590	2	814	3	799	2
Speed too slow	6	0	4	0	7	0	3	0	5	1
Failed to yield	391	3	427	0	392	3	470	2	437	4
Disregard traffic control	65	3	64	3	67	0	51	2	62	2
Drove wrong way	2	0	2	0	8	1	2	0	5	0
Drove left of center	45	1	39	3	35	2	38	0	28	1
Improper passing	30	0	35	0	22	0	38	1	39	0
Improper lane use	46	0	57	0	66	0	73	0	101	1
Improper turn	29	0	43	0	34	0	39	0	36	0
Improper/no signal	16	0	12	0	16	1	4	0	8	0
Improper backing	124	0	104	0	89	0	97	0	78	0
Unable to stop in assured clear distance	491	0	548	0	499	0	551	0	575	3
Other	185	1	184	3	218	1	220	1	178	3
Unknown	59	1	91	0	54	2	154	3	198	5
Reckless driving	41	1	25	0	32	0	27	1	47	2
Careless/negligent driving	227	2	254	0	324	2	254	1	261	5
Uncoded & errors	51	0	24	0	9	0	13	0	13	0
<b>Total</b>	<b>7,128</b>	<b>23</b>	<b>7,032</b>	<b>24</b>	<b>6,650</b>	<b>23</b>	<b>7,196</b>	<b>24</b>	<b>7,319</b>	<b>52</b>



The picture above represents all 2017 alcohol-involved fatal crashes in Post 64.

In 2017, there were 203 alcohol-involved crashes in Post 64:

- 11 K - Fatal Crashes
- 20 A - Suspected Serious Injury Crashes
- 26 B - Suspected Minor Injury Crashes
- 14 C - Possible Injury Crashes
- 132 O - Property Damage Only/No Injury Crashes

### Office of Highway Safety Planning

---

Physical Address:  
7150 Harris Drive  
Dimondale, Michigan 48821

Mailing Address:  
P.O. Box 30634  
Lansing, Michigan 48909

Phone: (517) 284-3112  
Fax: (517) 284-3151

Find us on the web:  
[MichiganTrafficCrashFacts.org](http://MichiganTrafficCrashFacts.org)

