



2017

MTCF
Michigan Traffic
Crash Facts

Michigan Traffic Crash Facts

Reporting Criteria

Please pay particular attention to the wording when interpreting the three levels of data gathered for this report.

Crash

The Crash Level analyzes data related to crash events and returns one result per crash.

Examples: Time, weather, and location.

Units

The Units Level analyzes the experience of the units in the crash and returns one result per vehicle, driver, pedestrian, bicyclist, or train.
Examples: Vehicle type, driver condition, and unit events.

People

The People Level analyzes the experience of the people involved in the crash and returns one result per occupant/person/party.

Examples: Age, injury severity, and seat belt or helmet use.

KABCO Injury Indicator:

K = Killed

A = Suspected Serious Injury

B = Suspected Minor Injury

C = Possible Injury

O = No Injury

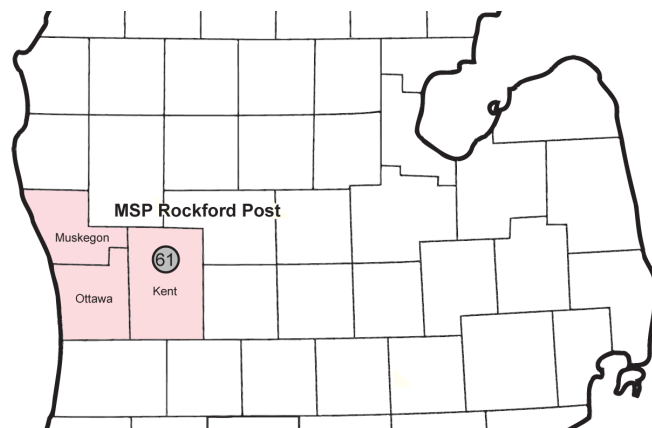
Property Damage Only (PDO)



Michigan State Police (MSP) Post 61 - Rockford

2017 Traffic Crash Data & 2013-2017 5-Year Trends

Post 61 is comprised of Kent, Muskegon, and Ottawa counties. Trend tables for this report are based on those counties.



Sources:

The crashes in this report occurred on public roadways in Michigan and resulted in injuries, fatalities, or property damage (with \$1,000 as a reporting threshold). The information was gathered from Michigan Traffic Crash Report Forms (UD-10) submitted by local police departments, sheriff's offices, and the Michigan State Police. Other related information was obtained from the departments of Transportation, State, and Community Health.

This page left intentionally blank

MSP Post 61 - Rockford

- There were 35,776 crashes in Post 61 during 2017. [Page 1]
- A total of 103 fatalities resulted from 98 fatal crashes in 2017 in Post 61. [Page 1]
- There were 8,606 injuries and 6,339 injury crashes. [Page 1]
- There were 29,339 property damage only crashes (no fatalities or injuries). [Page 1]
- December had the highest number of crashes (4,794). [Pages 1-2]
- November had the highest number of fatal crashes (14) and fatalities (16). [Pages 1-2]
- December had the highest number of injury crashes (645) while October had the highest number of injuries (854). [Page 1]
- December had the highest number of property damage only crashes (4,144). [Page 1]
- Of all vehicles involved in fatal crashes, 13 (7.9%) were motorcycles. [Page 1]
- Friday was the day of the week with the highest number of crashes (6,154) and Thursday had the highest number of fatal crashes (19). [Pages 2-3]
- The 3:00 PM - 5:59 PM time period had the highest number of crashes (8,691). This holds true for every year between 2013 and 2017. The 3:00 PM - 5:59 PM and 6:00 PM - 8:59 PM time periods had the highest number of fatal crashes (19). [Pages 5-6]
- During the period from 2013 to 2017, the highest number of deer crashes occurred in 2017 (3,330). The 6:00 AM - 8:59 AM time period had the highest number of deer-involved crashes. There were 2 fatal crashes involving deer in 2017. [Pages 7-8]
- Kent County (63.5%) had the highest number of crashes in Post 61 in 2017, followed by Ottawa County (22.5%), and Muskegon County (14.0%). [Page 8]
- Kent County (67.0%) had the highest number of fatalities in Post 61 in 2017, followed by Muskegon County and Ottawa County (16.5%), and (0.0%). [Page 8]
- The highest number of drivers in crashes (63,920) occurred during 2017 and the highest number of drivers coded drinking in crashes (1,317) occurred during 2017 within the five year period between 2013 and 2017. [Page 9]
- A total of 1,352 crashes involved alcohol in 2017. [Page 10]
- Alcohol-involved fatal crashes were the highest in 2017 during the five-year period from 2013 to 2017 at 31. [Page 10]
- A total of 288 crashes, 28 fatal crashes, and 34 suspected serious injury crashes involved drugs in 2017, all the highest during the five-year period. [Page 11]
- There were 54,890 drivers wearing seatbelts and 411 drivers not wearing seatbelts in crashes in 2017. Of the 411 drivers not wearing seat belts, 15 (3.6%) were killed and 122 (29.7%) were injured. [Pages 14-16]
- The most common hazardous action coded for drivers in 2017 in all crashes was unable to stop in assured clear distance (9,423), while the most common hazardous action coded for drivers in fatal crashes was speed too fast (17). [Page 17]

MSP Post 61 - Rockford (continued)

Post 61 Experience

In 2017:

There were 63,920 drivers involved in 35,776 motor vehicle crashes in MSP Post 61. Of those crashes, 98 were classified as fatal, resulting in 103 fatalities. An additional 8,606 persons were injured.

Post 61 experienced the highest number of motor vehicle crashes (4,794) in December, the highest number of fatal crashes (14) and the highest number of persons killed (16) in November.

Michigan driver statistics indicate 7.1 percent of licensed drivers in Post 61 were age 16-20, and 12.0 percent of drivers in crashes were also in that age group.

2017 - Crashes and Injuries by Month

Month	Crashes				Persons	
	Total	Fatal	Injury	Property Damage Only (PDO)	Fatalities	Injuries
January	3,303	6	496	2,801	6	645
February	2,319	8	405	1,906	9	553
March	2,675	9	448	2,218	10	610
April	2,377	6	463	1,908	6	671
May	2,782	7	576	2,199	7	799
June	2,836	8	572	2,256	9	777
July	2,653	5	554	2,094	5	734
August	2,640	10	514	2,116	10	724
September	2,685	12	575	2,098	12	806
October	3,602	8	637	2,957	8	854
November	3,110	14	454	2,642	16	614
December	4,794	5	645	4,144	5	819
Total	35,776	98	6,339	29,339	103	8,606

2017 - Driver Statistics

Age Group	Post 61			Driver Rates	
	2017 Population	Licensed Drivers	Drivers in Crashes	Per 10k Population	Per 10k Licensed
0 - 15	237,138	6,352	104	4.4	163.7
16 - 20	79,920	55,828	7,691	962.3	1,377.6
21 - 24	66,052	55,387	6,829	1,033.9	1,233.0
25 - 64	569,447	526,434	37,944	666.3	720.8
65 +	156,113	140,587	5,355	343.0	380.9
Unknown	0	0	5,997	--	--
Total	1,108,670	784,588	63,920	576.5	814.7

2017 - Vehicles in Crashes

Vehicle Type	Motor Vehicles		Fatal Crashes		Injury Crashes	PDO Crashes
	Number of Vehicles	% of Total	Number	% of Total	Number	Number
Passenger car, SUV, van	53,612	83.9	120	73.2	10,118	43,374
Motor home	208	0.3	2	1.2	37	169
Pickup truck	5,868	9.2	13	7.9	1,072	4,783
Small truck under 10,000 lbs. GVWR	419	0.7	0	0.0	55	364
Motorcycle	339	0.5	13	7.9	237	89
Moped / goped	74	0.1	1	0.6	63	10
Go-cart / golf cart	1	0.0	0	0.0	1	0
Snowmobile	4	0.0	0	0.0	0	4
Off-Road Vehicle - ORV / All-Terrain Vehicle - ATV	9	0.0	0	0.0	6	3
Other	263	0.4	0	0.0	31	232
Truck/bus over 10,000 lbs.	1,539	2.4	15	9.1	264	1,260
Unknown	1,584	2.5	0	0.0	93	1,491
Total	63,920	100.0	164	100.0	11,977	51,779

5-Year Trend - Crashes by Month

Month	2013		2014		2015		2016		2017	
	Total Crashes	Fatal Crashes	Total Crashes	Fatal Crashes	Total Crashes	Fatal Crashes	Total Crashes	Fatal Crashes	Total Crashes	Fatal Crashes
January	3,286	4	4,588	2	3,559	10	3,279	5	3,303	6
February	3,373	1	3,792	6	3,373	4	2,649	9	2,319	8
March	2,110	5	2,512	5	2,278	4	2,632	4	2,675	9
April	1,967	4	1,724	8	1,973	3	2,410	10	2,377	6
May	2,386	11	2,262	8	2,532	12	2,759	5	2,782	7
June	2,083	5	2,253	6	2,475	9	2,742	9	2,836	8
July	2,202	8	2,108	15	2,451	3	2,566	6	2,653	5
August	2,158	11	2,266	11	2,282	19	2,876	7	2,640	10
September	2,273	3	2,374	10	2,497	5	2,856	14	2,685	12
October	2,835	10	2,912	9	3,171	9	3,146	10	3,602	8
November	3,369	7	4,034	2	3,063	9	3,291	11	3,110	14
December	3,627	4	2,446	5	2,940	8	4,269	7	4,794	5
Total	31,669	73	33,271	87	32,594	95	35,475	97	35,776	98

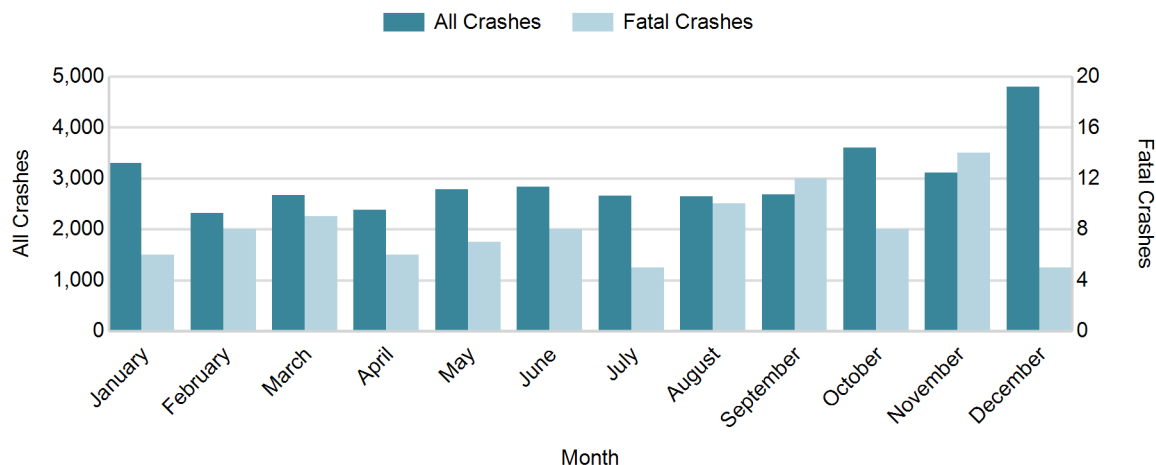
Note: † Indicates that the highest number of total crashes reported in the 5-year period occurred in the same month

5-Year Trend - Crashes by Day of Week

Day	2013		2014		2015		2016		2017	
	Total Crashes	Fatal Crashes	Total Crashes	Fatal Crashes	Total Crashes	Fatal Crashes	Total Crashes	Fatal Crashes	Total Crashes	Fatal Crashes
Monday	4,725	8	4,773	7	4,809	10	5,018	14	5,143	10
Tuesday	5,128	16	5,123	8	4,865	13	5,348	15	5,298	15
Wednesday	4,697	8	5,476	13	5,177	13	5,495	12	5,526	15
Thursday	5,096	13	5,524	15	5,019	12	5,723	13	5,706	19
Friday	5,182 †	9	5,557 †	13	5,460 †	14	6,186 †	14	6,154 †	14
Saturday	3,984	12	3,902	16	4,238	16	4,362	16	4,620	17
Sunday	2,857	7	2,916	15	3,026	17	3,343	13	3,329	8
Total	31,669	73	33,271	87	32,594	95	35,475	97	35,776	98

Note: † Indicates that the highest number of total crashes reported in the 5-year period occurred on the same day of the week

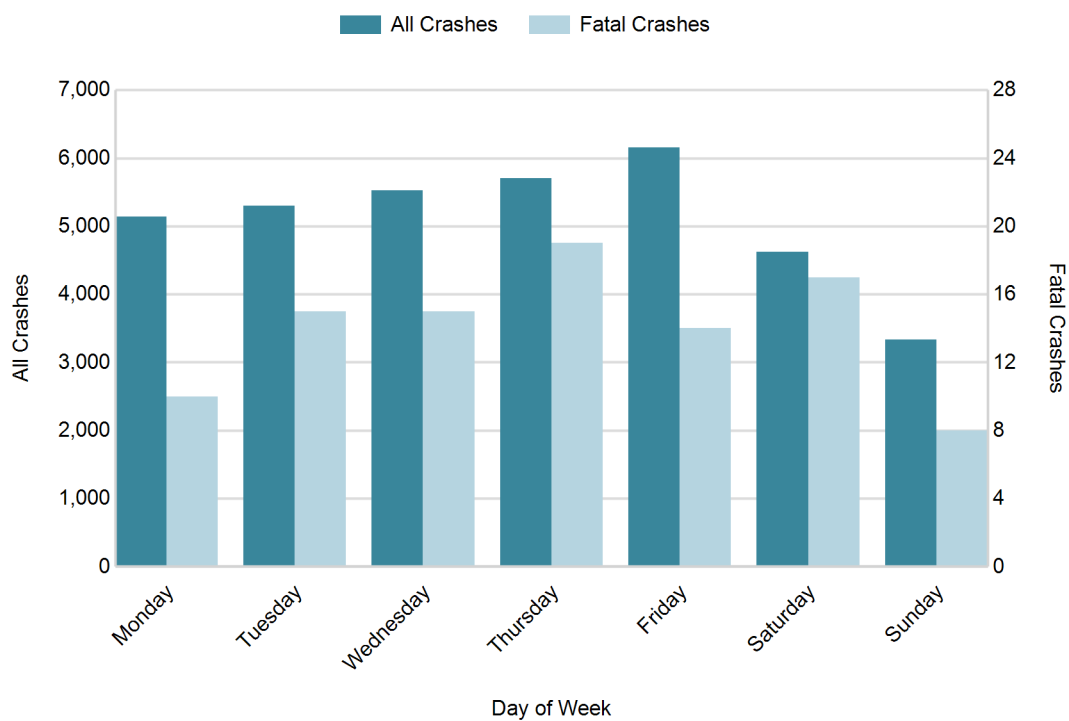
2017 Crashes by Month



2017 - Crashes by Day of Week

Day	All Crashes		Fatal Crashes		Injury Crashes			PDO Crashes
	Number	% of Total	Number	% of Fatal	A	B	C	Number
Monday	5,143	14.4	10	10.2	68	231	634	4,200
Tuesday	5,298	14.8	15	15.3	77	243	635	4,328
Wednesday	5,526	15.4	15	15.3	78	214	593	4,626
Thursday	5,706	15.9	19	19.4	86	233	665	4,703
Friday	6,154	17.2	14	14.3	97	300	727	5,016
Saturday	4,620	12.9	17	17.3	107	232	499	3,765
Sunday	3,329	9.3	8	8.2	90	195	335	2,701
Total	35,776	100.0	98	100.0	603	1,648	4,088	29,339

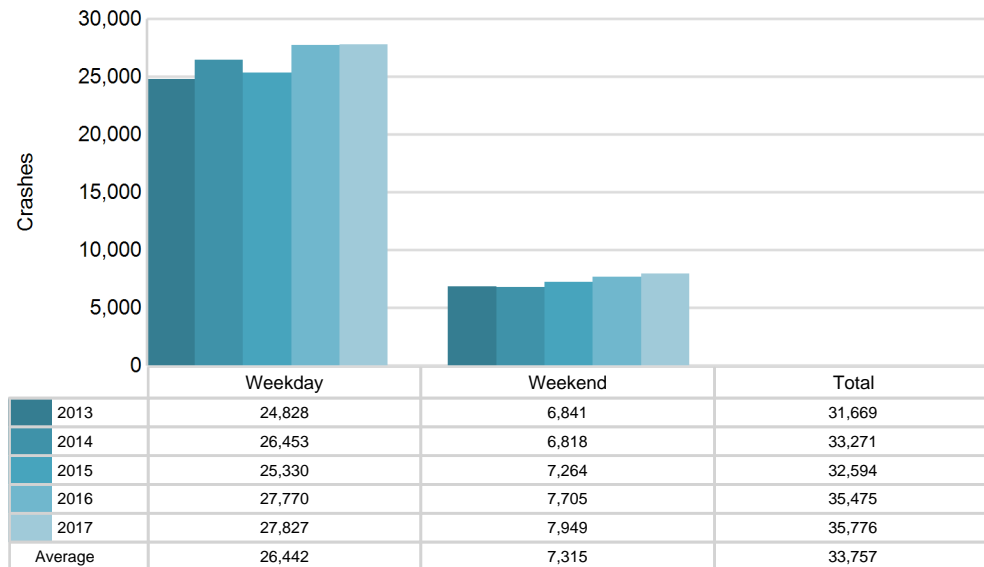
2017 Day of Week and Severity



5-Year Trend - Crashes by Weekday and Weekend

Portion of Week	2013		2014		2015		2016		2017	
	Total Crashes	Fatal Crashes	Total Crashes	Fatal Crashes	Total Crashes	Fatal Crashes	Total Crashes	Fatal Crashes	Total Crashes	Fatal Crashes
Weekday	24,828	54	26,453	56	25,330	62	27,770	68	27,827	73
Weekend	6,841	19	6,818	31	7,264	33	7,705	29	7,949	25
Total	31,669	73	33,271	87	32,594	95	35,475	97	35,776	98

5-Year Crash Trends by Weekday (Monday - Friday) and Weekend (Saturday & Sunday)

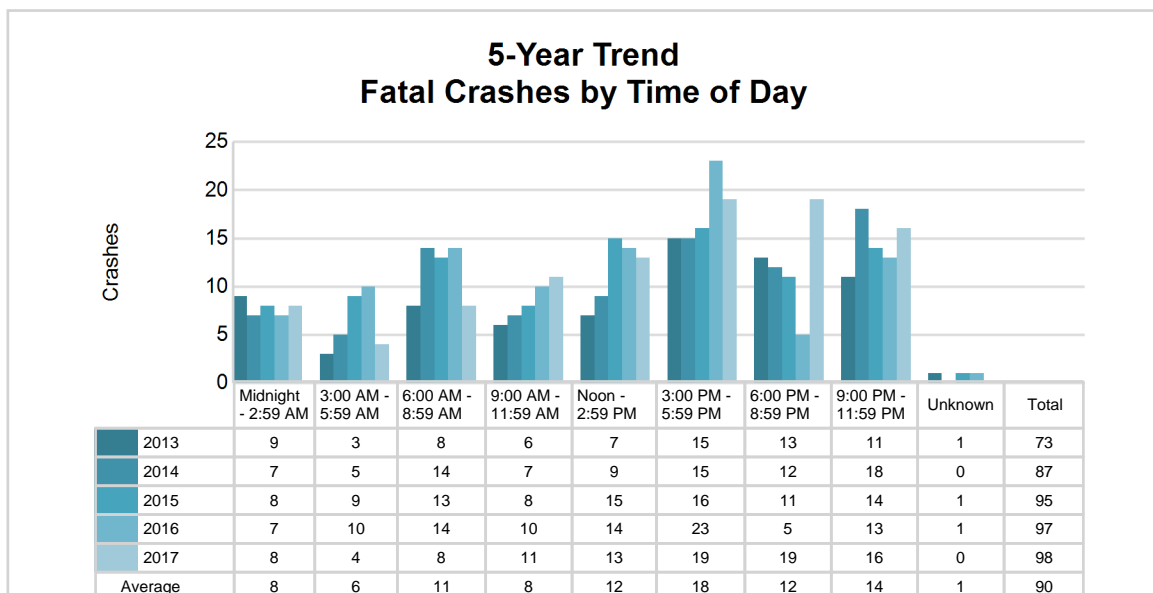
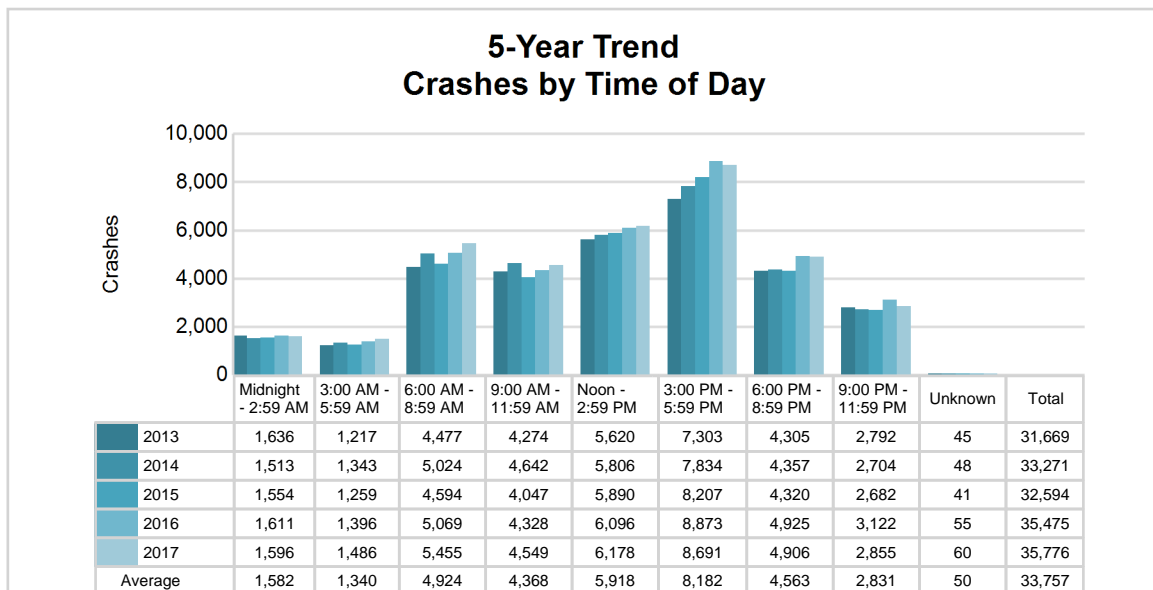


MSP Post 61 - Rockford (continued)

5-Year Trend - Crashes by Time of Day

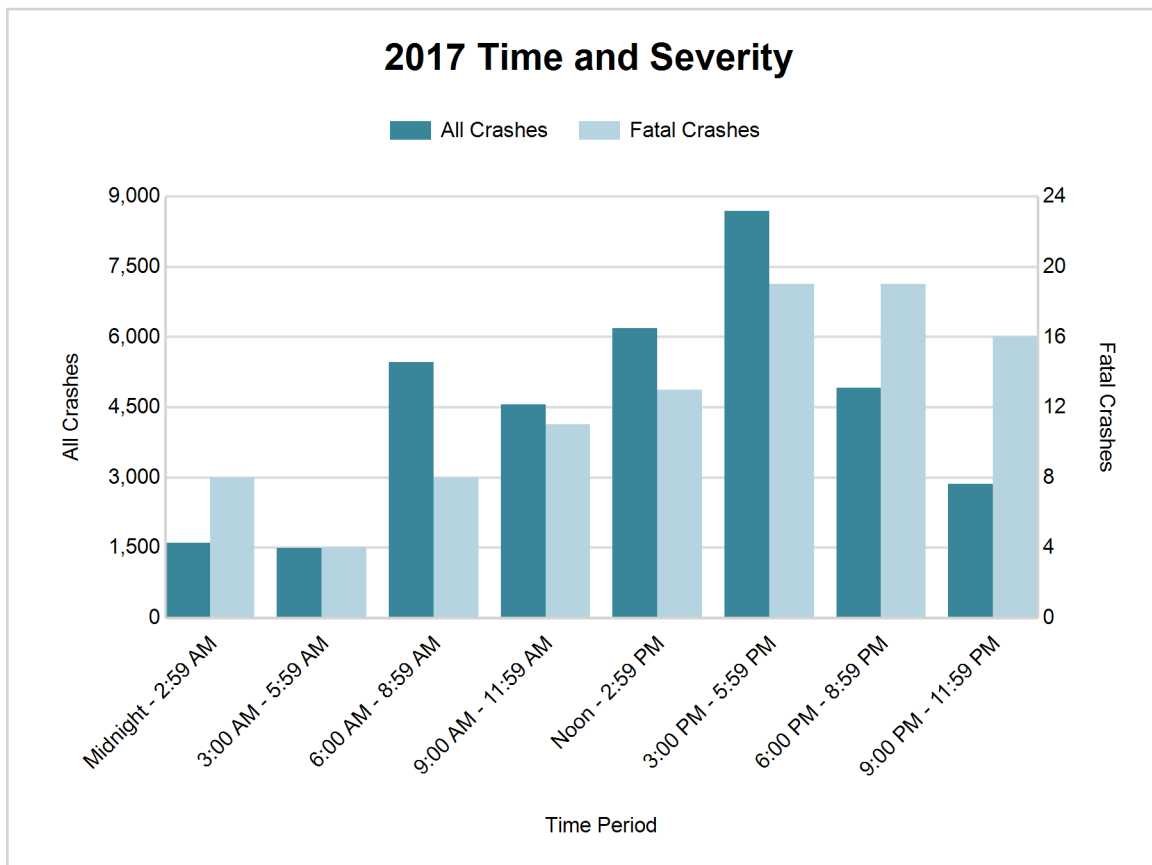
Time of Day	2013		2014		2015		2016		2017	
	Total Crashes	Fatal Crashes	Total Crashes	Fatal Crashes	Total Crashes	Fatal Crashes	Total Crashes	Fatal Crashes	Total Crashes	Fatal Crashes
Midnight - 2:59 AM	1,636	9	1,513	7	1,554	8	1,611	7	1,596	8
3:00 AM - 5:59 AM	1,217	3	1,343	5	1,259	9	1,396	10	1,486	4
6:00 AM - 8:59 AM	4,477	8	5,024	14	4,594	13	5,069	14	5,455	8
9:00 AM - 11:59 AM	4,274	6	4,642	7	4,047	8	4,328	10	4,549	11
Noon - 2:59 PM	5,620	7	5,806	9	5,890	15	6,096	14	6,178	13
3:00 PM - 5:59 PM	7,303 †	15	7,834 †	15	8,207 †	16	8,873 †	23	8,691 †	19
6:00 PM - 8:59 PM	4,305	13	4,357	12	4,320	11	4,925	5	4,906	19
9:00 PM - 11:59 PM	2,792	11	2,704	18	2,682	14	3,122	13	2,855	16
Unknown	45	1	48	0	41	1	55	1	60	0
Total	31,669	73	33,271	87	32,594	95	35,475	97	35,776	98

Note: † Indicates that the highest number of total crashes reported in the 5-year period occurred in the same time period



2017 - Time and Severity

Time of Day	All Crashes		Fatal Crashes		Injury Crashes			PDO Crashes
	Number	% of Total	Number	% of Fatal	A	B	C	Number
Midnight - 2:59 AM	1,596	4.5	8	8.2	45	84	142	1,317
3:00 AM - 5:59 AM	1,486	4.2	4	4.1	37	62	110	1,273
6:00 AM - 8:59 AM	5,455	15.2	8	8.2	66	195	563	4,623
9:00 AM - 11:59 AM	4,549	12.7	11	11.2	73	204	509	3,752
Noon - 2:59 PM	6,178	17.3	13	13.3	81	322	782	4,980
3:00 PM - 5:59 PM	8,691	24.3	19	19.4	147	377	1,135	7,013
6:00 PM - 8:59 PM	4,906	13.7	19	19.4	88	230	534	4,035
9:00 PM - 11:59 PM	2,855	8.0	16	16.3	66	172	313	2,288
Unknown	60	0.2	0	0.0	0	2	0	58
Total	35,776	100.0	98	100.0	603	1,648	4,088	29,339

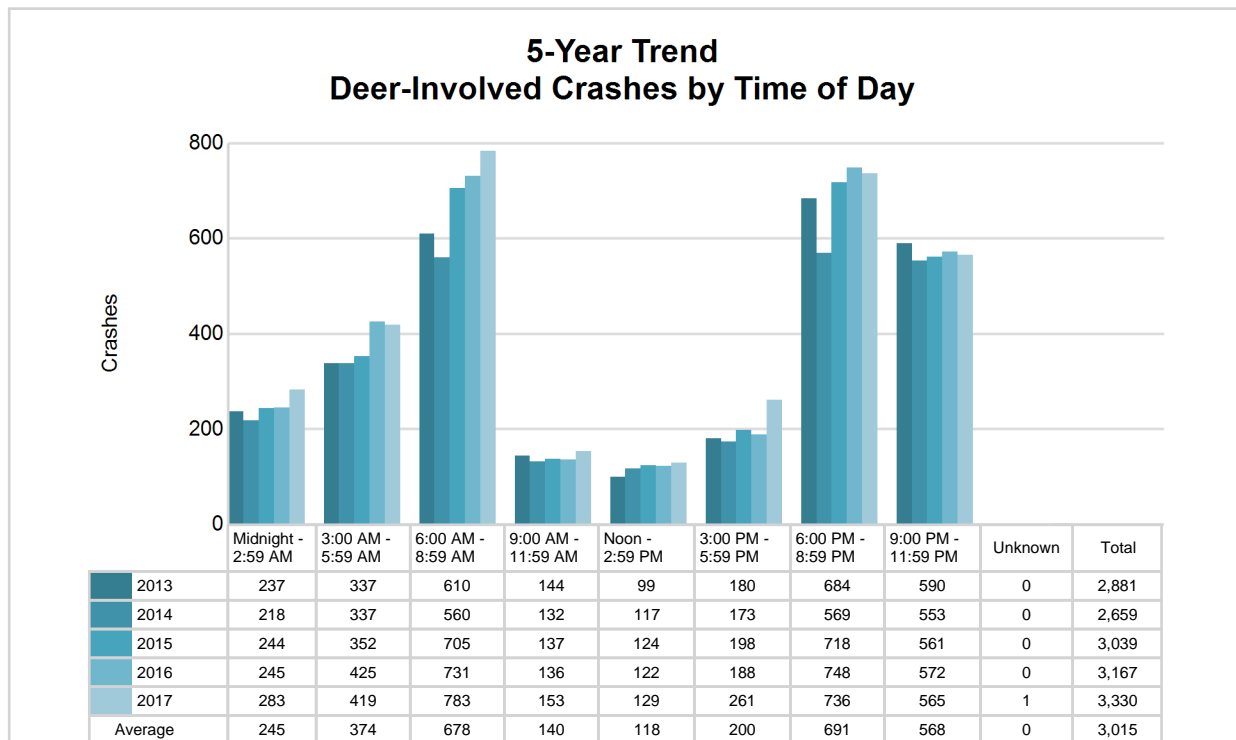


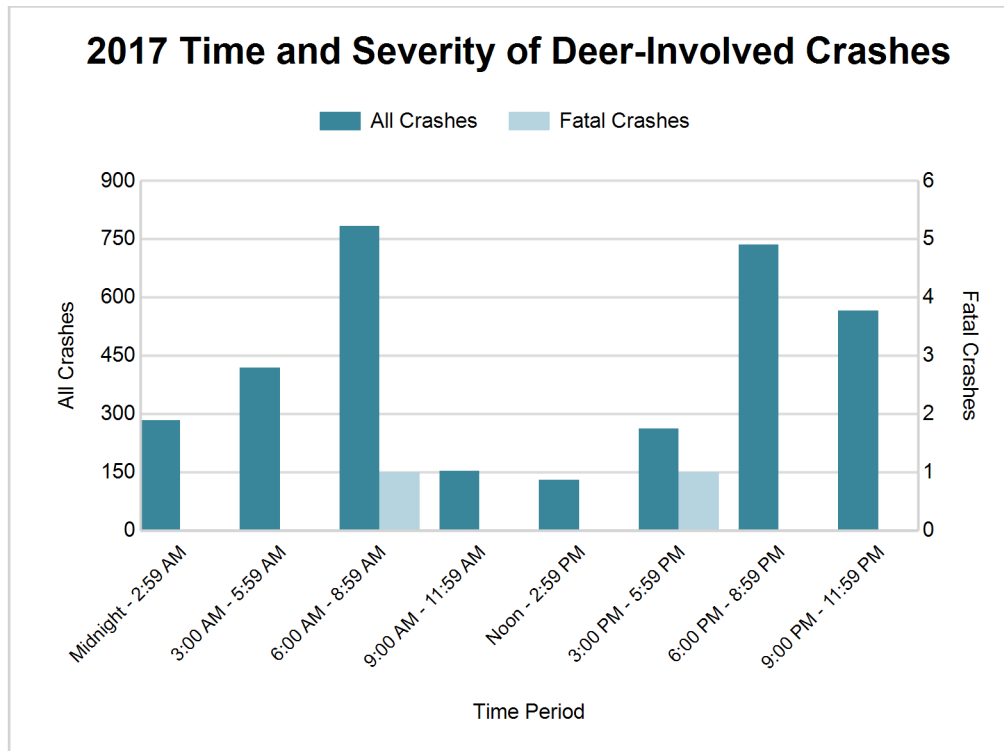
MSP Post 61 - Rockford (continued)

5-Year Trend - Deer-Involved Crashes by Time of Day

Time of Day	2013		2014		2015		2016		2017	
	Total Crashes	Fatal Crashes	Total Crashes	Fatal Crashes	Total Crashes	Fatal Crashes	Total Crashes	Fatal Crashes	Total Crashes	Fatal Crashes
Midnight - 2:59 AM	237	0	218	0	244	0	245	0	283	0
3:00 AM - 5:59 AM	337	0	337	0	352	0	425	0	419	0
6:00 AM - 8:59 AM	610	0	560	0	705	0	731	0	783	1
9:00 AM - 11:59 AM	144	0	132	0	137	0	136	0	153	0
Noon - 2:59 PM	99	0	117	0	124	0	122	0	129	0
3:00 PM - 5:59 PM	180	0	173	0	198	0	188	0	261	1
6:00 PM - 8:59 PM	684	0	569	0	718	0	748	0	736	0
9:00 PM - 11:59 PM	590	0	553	0	561	0	572	0	565	0
Unknown	0	0	0	0	0	0	0	0	1	0
Total	2,881	0	2,659	0	3,039	0	3,167	0	3,330	2

Note: † Indicates that the highest number of total crashes reported in the 5-year period occurred in the same time period





2017 - Reported Motor Vehicle Crashes by County

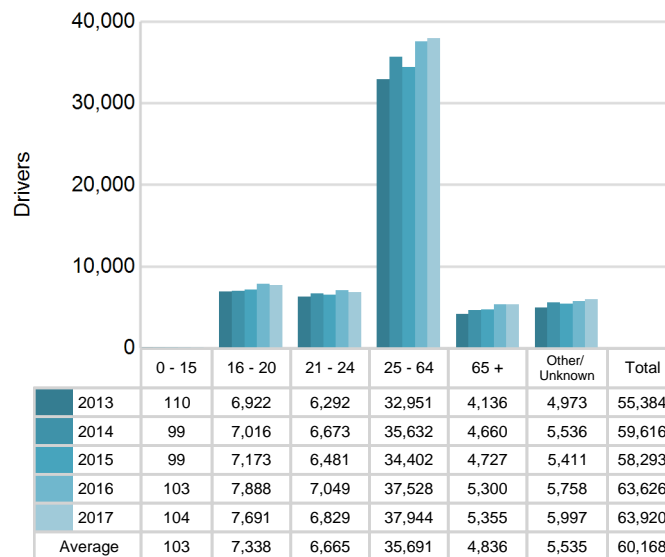
County	Crashes											Persons	
	Total	Fatal	Injury	Property Damage	Inter-state	US Route	State Route	Local Street	Alcohol-Involved	Drug-Involved	Deer-Involved	Fatalities	Injuries
Kent	22,712	65	4,092	18,555	2,911	2,375	4,680	12,719	885	173	1,572	69	5,442
Muskegon	5,012	16	880	4,116	95	1,060	637	3,213	163	56	636	17	1,273
Ottawa	8,052	17	1,367	6,668	972	961	773	5,342	304	59	1,122	17	1,891
Total	35,776	98	6,339	29,339	3,978	4,396	6,090	21,274	1,352	288	3,330	103	8,606

MSP Post 61 - Rockford (continued)

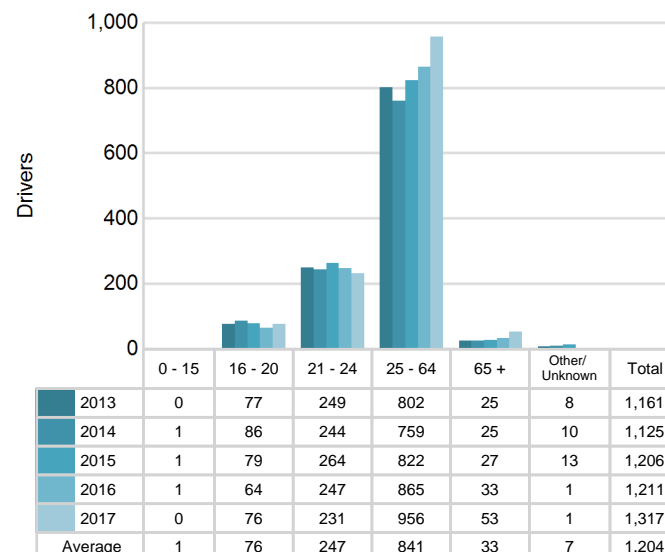
5-Year Trend - Drivers in Crashes Coded Drinking by Driver Age

Driver Age	2013		2014		2015		2016		2017	
	Total Drivers in Crashes	Total Drivers Coded Drinking	Total Drivers in Crashes	Total Drivers Coded Drinking	Total Drivers in Crashes	Total Drivers Coded Drinking	Total Drivers in Crashes	Total Drivers Coded Drinking	Total Drivers in Crashes	Total Drivers Coded Drinking
0 - 15	110	0	99	1	99	1	103	1	104	0
16 - 20	6,922	77	7,016	86	7,173	79	7,888	64	7,691	76
21 - 24	6,292	249	6,673	244	6,481	264	7,049	247	6,829	231
25 - 64	32,951	802	35,632	759	34,402	822	37,528	865	37,944	956
65 +	4,136	25	4,660	25	4,727	27	5,300	33	5,355	53
Unknown	4,973	8	5,536	10	5,411	13	5,758	1	5,997	1
Total	55,384	1,161	59,616	1,125	58,293	1,206	63,626	1,211	63,920	1,317

**5-Year Trend
Total Drivers in Crashes by Age**



**5-Year Trend
Total Drivers Coded Drinking by Age**



2017 - Bodily Alcohol Concentration (BAC) Results Among All Vehicle Drivers in Alcohol-Involved Crashes by Age

Age Group	Drivers				BAC Result Range for Drivers Coded Drinking				
	Total Drivers in Alcohol-Involved Crashes	Total Drivers Tested in all Crashes	Total Drivers Coded Drinking, Tested	Total Drivers Coded Drinking	BAC = 0.00	BAC 0.01 g/dL to 0.07 g/dL	BAC 0.08 g/dL to 0.16 g/dL	BAC 0.17 g/dL and Above	BAC Not Reported
0 - 15	1	0	0	0	0	0	0	0	0
16 - 20	148	116	63	76	3	14	19	12	28
21 - 24	305	228	196	231	3	21	74	51	82
25 - 64	1,377	969	774	956	12	89	219	269	367
65 +	87	72	49	53	0	7	13	17	16
Unknown	207	0	0	1	0	0	0	0	1
Total	2,125	1,385	1,082	1,317	18	131	325	349	494

Notes: BAC measured in grams (g) per deciliter (dL).

BAC may not be reported if drivers are not tested or if the results are not available immediately (as in the case of a blood test).

A driver may be coded by the officer as drinking even though no test is administered.

Alcohol-Involved Crashes

In 2017, there were 2,125 drivers in alcohol-involved crashes; 1,317 (62.0%) of those drivers were coded as had-been-drinking by the officer on the crash form.

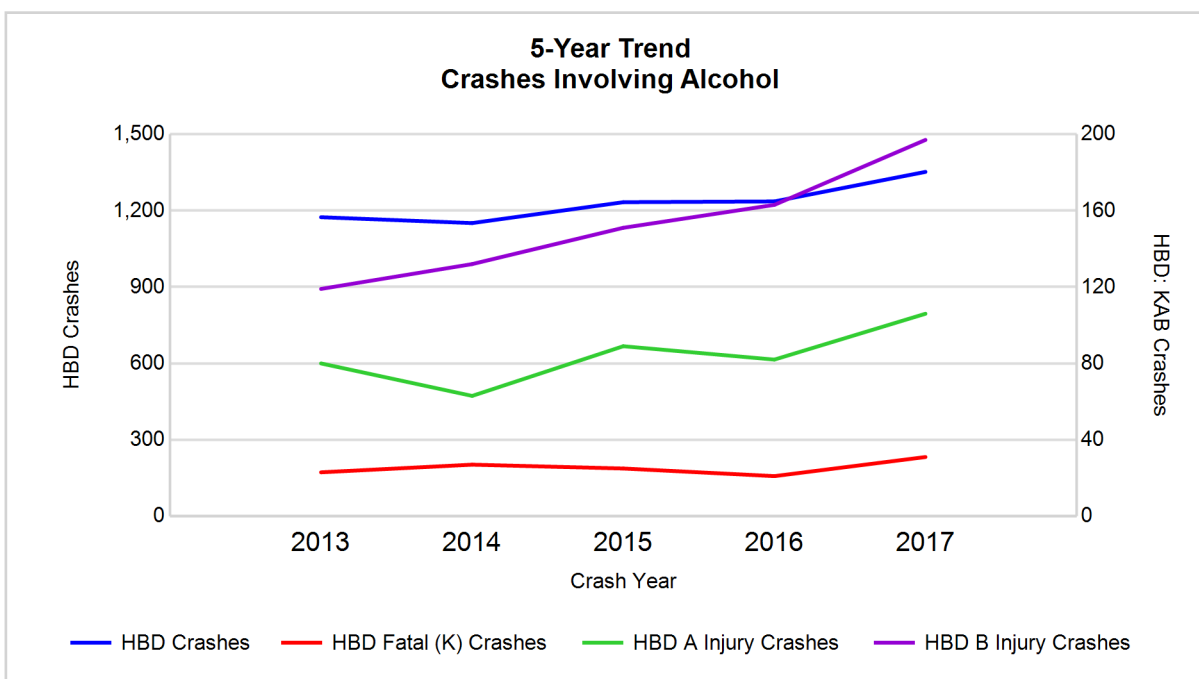
- 674 (51.2%) of the 1,317 drivers had a blood alcohol concentration (BAC) of 0.08 g/dL (grams per deciliter) or greater, and 349 (51.8%) of the 674 drivers had a BAC at or above 0.17 g/dL.
- 1,082 (82.2%) of the 1,317 drivers were coded as had-been-drinking and were tested for alcohol consumption.

5-Year Trend - Crashes Involving Alcohol

Year	All Crashes	HBD Crashes	% HBD	Fatal Crashes	HBD Fatal Crashes	% HBD	A Injury Crashes	HBD A Injury Crashes	% HBD	B Injury Crashes	HBD B Injury Crashes	% HBD
2013	31,669	1,174	3.7	73	23	31.5	402	80	19.9	1,338	119	8.9
2014	33,271	1,151	3.5	87	27	31.0	430	63	14.7	1,326	132	10.0
2015	32,594	1,233	3.8	95	25	26.3	457	89	19.5	1,316	151	11.5
2016	35,475	1,236	3.5	97	21	21.6	564	82	14.5	1,664	163	9.8
2017	35,776**	1,352**	3.8	98**	31**	31.6**	603**	106**	17.6	1,648	197**	12.0**

Note: * Indicates that the most recent year is the lowest number or percentage reported in the 5-year period in that column

** Indicates that the most recent year is the highest number or percentage reported in the 5-year period in that column



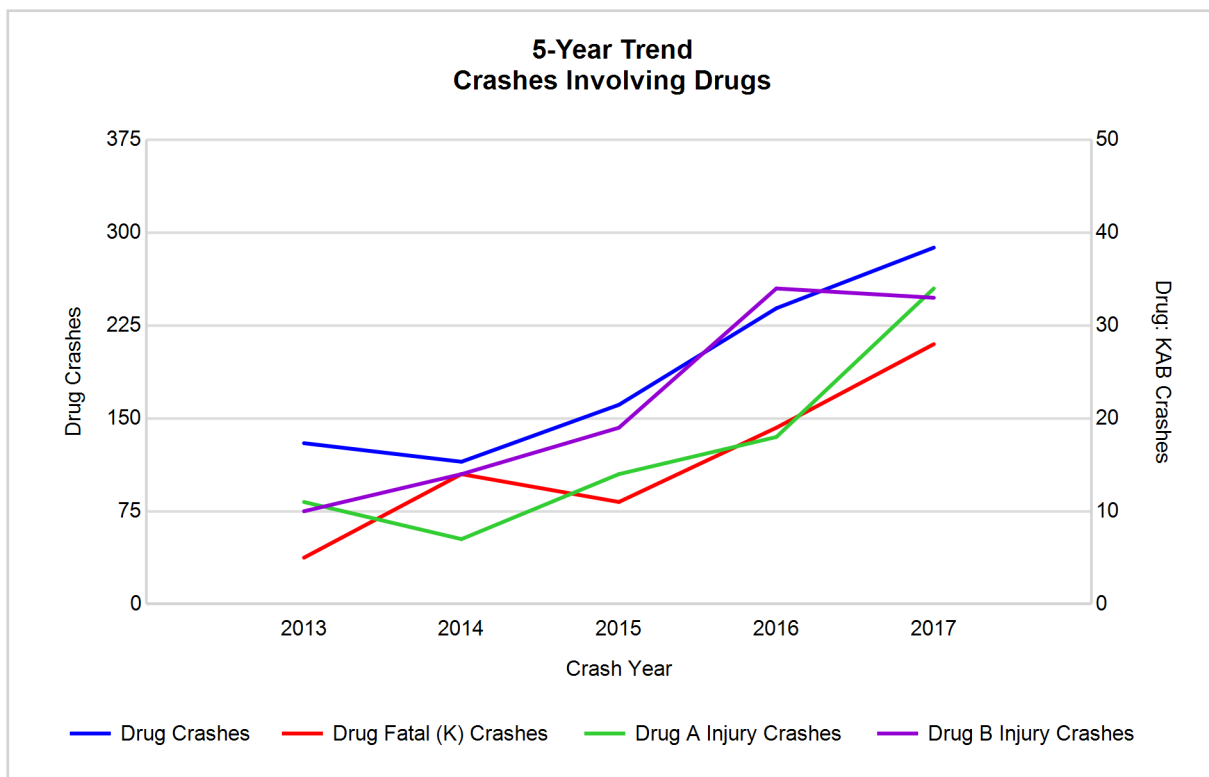
Note: Had-Been-Drinking (HBD)

5-Year Trend - Crashes Involving Drugs

Year	All Crashes	Drug Crashes	% Drug	Fatal Crashes	Drug Fatal Crashes	% Drug	A Injury Crashes	Drug A Injury Crashes	% Drug	B Injury Crashes	Drug B Injury Crashes	% Drug
2013	31,669	130	0.4	73	5	6.8	402	11	2.7	1,338	10	0.7
2014	33,271	115	0.3	87	14	16.1	430	7	1.6	1,326	14	1.1
2015	32,594	161	0.5	95	11	11.6	457	14	3.1	1,316	19	1.4
2016	35,475	239	0.7	97	19	19.6	564	18	3.2	1,664	34	2.0
2017	35,776**	288**	0.8**	98**	28**	28.6**	603**	34**	5.6**	1,648	33	2.0

Note: * Indicates that the most recent year is the lowest number or percentage reported in the 5-year period in that column

** Indicates that the most recent year is the highest number or percentage reported in the 5-year period in that column

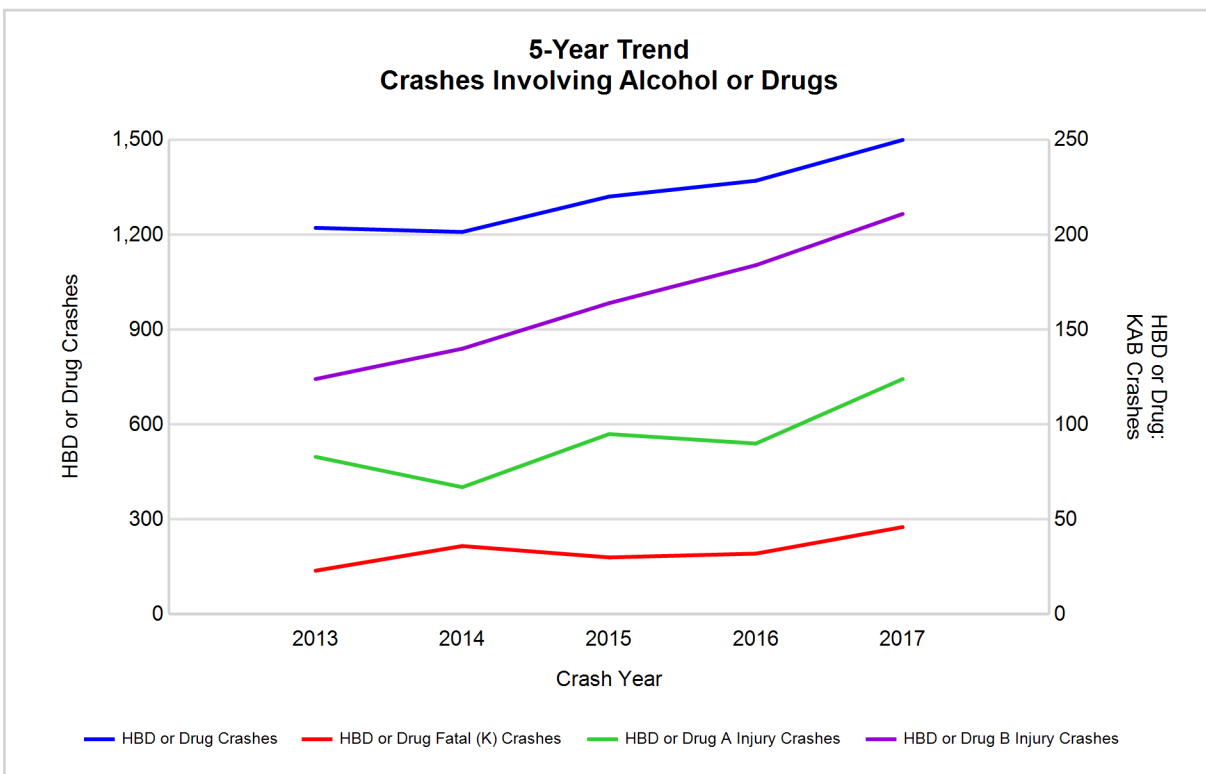


5-Year Trend - Crashes Involving Alcohol or Drugs

Year	All Crashes	HBD or Drug Crashes	% HBD or Drug	Fatal Crashes	HBD or Drug Fatal Crashes	% HBD or Drug	A Injury Crashes	HBD or Drug A Injury Crashes	% HBD or Drug	B Injury Crashes	HBD or Drug B Injury Crashes	% HBD or Drug
2013	31,669	1,222	3.9	73	23	31.5	402	83	20.6	1,338	124	9.3
2014	33,271	1,209	3.6	87	36	41.4	430	67	15.6	1,326	140	10.6
2015	32,594	1,321	4.1	95	30	31.6	457	95	20.8	1,316	164	12.5
2016	35,475	1,371	3.9	97	32	33.0	564	90	16.0	1,664	184	11.1
2017	35,776**	1,500**	4.2**	98**	46**	46.9**	603**	124**	20.6	1,648	211**	12.8**

Note: * Indicates that the most recent year is the lowest number or percentage reported in the 5-year period in that column

** Indicates that the most recent year is the highest number or percentage reported in the 5-year period in that column



Note: Had-Been-Drinking (HBD)

2017 - Restraints Worn Among Vehicle Drivers and Injured Passengers by Vehicle Type

Vehicle Type	Total Occupants			Fatalities			A - Suspected Serious			B - Suspected Minor			C - Possible Injury			No Injury		
	Total	Used Restraint	%	Total	Used Restraint	%	Total	Used Restraint	%	Total	Used Restraint	%	Total	Used Restraint	%	Total	Used Restraint	%
Passenger car, SUV, van	55,401	49,114	88.7	63	36	57.1	508	423	83.3	1,565	1,452	92.8	4,992	4,779	95.7	44,390	42,421	95.6
Motor home	223	195	87.4	2	0	0.0	2	1	50.0	10	9	90.0	18	16	88.9	183	169	92.3
Pickup truck	5,992	5,382	89.8	4	0	0.0	40	30	75.0	175	161	92.0	362	350	96.7	5,021	4,841	96.4
Small truck under 10,000 lbs. GVWR	423	364	86.1	0	0	0.0	0	0	0.0	10	9	90.0	22	20	90.9	356	335	94.1
Motorcycle	362	243	67.1	13	10	76.9	68	34	50.0	110	78	70.9	70	54	77.1	96	67	69.8
Moped / goped	75	27	36.0	1	0	0.0	13	2	15.4	28	11	39.3	23	8	34.8	9	6	66.7
Go-cart / golf cart	1	1	100.0	0	0	0.0	0	0	0.0	0	0	0.0	0	0	0.0	1	1	100.0
Snowmobile	4	1	25.0	0	0	0.0	0	0	0.0	0	0	0.0	0	0	0.0	4	1	25.0
Off-Road Vehicle - ORV / All-Terrain Vehicle - ATV	11	4	36.4	0	0	0.0	4	3	75.0	2	0	0.0	2	1	50.0	3	0	0.0
Other	266	160	60.2	0	0	0.0	2	1	50.0	3	0	0.0	13	4	30.8	201	155	77.1
Truck/bus over 10,000 lbs.	1,583	1,437	90.8	2	1	50.0	7	4	57.1	21	15	71.4	70	42	60.0	1,433	1,375	96.0
Unknown	1,585	1	0.1	0	0	0.0	0	0	0.0	0	0	0.0	1	1	100.0	22	0	0.0
Total	65,926	56,929	86.4	85	47	55.3	644	498	77.3	1,924	1,735	90.2	5,573	5,275	94.7	51,719	49,371	95.5

Note: Restraint Use includes shoulder belt only used, lap belt only used, both lap and shoulder belts used, child restraint used, restraint failure, and helmet worn.

2017 - Restraints Worn Among Vehicle Drivers and Injured Passengers by Age

Age Group	Total Occupants			Fatalities			A - Suspected Serious			B - Suspected Minor			C - Possible Injury			No Injury		
	Total	Used Restraint	%	Total	Used Restraint	%	Total	Used Restraint	%	Total	Used Restraint	%	Total	Used Restraint	%	Total	Used Restraint	%
0 - 15	630	570	90.5	1	0	0.0	25	23	92.0	143	131	91.6	368	335	91.0	92	81	88.0
16 - 20	7,981	7,637	95.7	7	4	57.1	76	53	69.7	297	271	91.2	730	684	93.7	6,859	6,624	96.6
21 - 24	6,998	6,609	94.4	12	6	50.0	62	46	74.2	211	189	89.6	539	505	93.7	6,154	5,863	95.3
25 - 64	38,756	36,726	94.8	46	22	47.8	401	310	77.3	1,052	934	88.8	3,355	3,191	95.1	33,754	32,267	95.6
65 +	5,562	5,382	96.8	19	15	78.9	79	66	83.5	221	210	95.0	578	560	96.9	4,648	4,531	97.5
Unknown	5,999	5	0.1	0	0	0.0	1	0	0.0	0	0	0.0	3	0	0.0	212	5	2.4
Total	65,926	56,929	86.4	85	47	55.3	644	498	77.3	1,924	1,735	90.2	5,573	5,275	94.7	51,719	49,371	95.5

Note: Restraint Use includes shoulder belt only used, lap belt only used, both lap and shoulder belts used, child restraint used, restraint failure, and helmet worn.

5-Year Trend - Restraint Use Among Drivers

Restraint Use	2013			2014			2015			2016			2017		
	Drivers	Fatal Drivers	Injured Drivers	Drivers	Fatal Drivers	Injured Drivers	Drivers	Fatal Drivers	Injured Drivers	Drivers	Fatal Drivers	Injured Drivers	Drivers	Fatal Drivers	Injured Drivers
No belts available	285	0	34	241	2	34	206	0	14	156	3	10	84	0	12
Shoulder belt only used	62	0	7	107	0	12	154	0	19	266	0	26	260	0	34
Lap belt only used	290	0	22	493	0	52	430	2	30	338	0	40	210	0	31
Both lap & shoulder belts used	47,516	22	4,751	50,465	23	4,845	49,770	26	4,848	54,447	32	5,730	54,386	34	5,484
No belts used	348	6	87	441	16	109	468	15	106	418	11	115	327	15	110
Child restraint used	2	0	0	4	0	0	0	0	0	5	0	1	0	0	0
Child restraint not used, unavailable or improper use	0	0	0	7	0	1	2	0	0	1	0	0	0	0	0
Restraint failure	17	0	2	63	0	9	49	1	4	48	0	7	34	0	7
Restraint use unknown	1,944	2	133	2,343	5	127	1,861	3	116	5,544	8	179	8,135	9	180
Helmet worn	321	6	237	301	8	214	299	5	210	283	4	216	258	10	174
Helmet not worn	163	11	116	134	6	104	147	6	103	170	7	127	137	4	106
Helmet use unknown	25	0	10	35	2	13	17	0	10	24	0	13	20	0	10
Uncoded & errors	4,411	0	5	4,982	0	3	4,890	0	5	1,926	0	2	69	0	0
Total	55,384	47	5,404	59,616	62	5,523	58,293	58	5,465	63,626	65	6,466	63,920	72	6,148

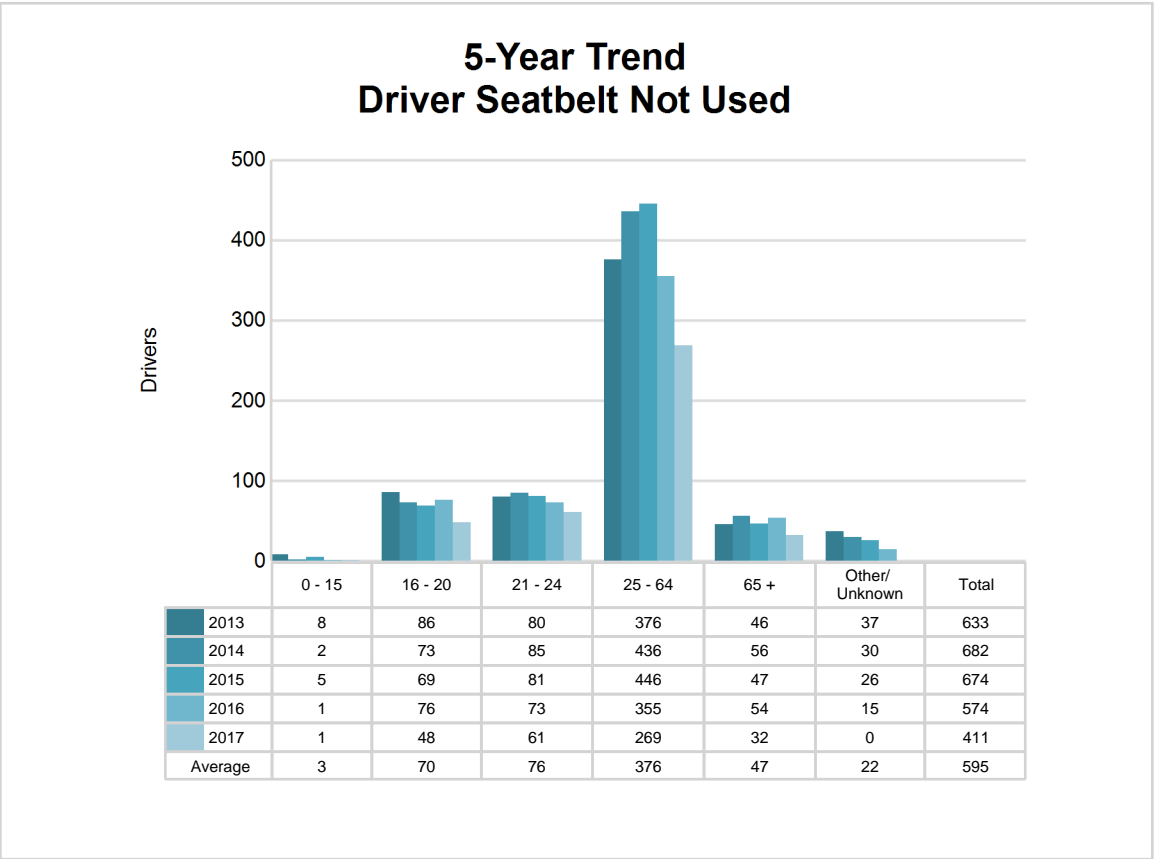
5-Year Trend - Restraint Use Among Drivers Coded Drinking

Restraint Use	2013			2014			2015			2016			2017		
	Drivers	Fatal Drivers	Injured Drivers	Drivers	Fatal Drivers	Injured Drivers	Drivers	Fatal Drivers	Injured Drivers	Drivers	Fatal Drivers	Injured Drivers	Drivers	Fatal Drivers	Injured Drivers
No belts available	6	0	1	10	0	3	7	0	0	4	0	0	4	0	3
Shoulder belt only used	3	0	2	2	0	0	5	0	0	4	0	0	4	0	3
Lap belt only used	5	0	1	8	0	1	13	1	1	7	0	2	3	0	0
Both lap & shoulder belts used	878	5	186	812	2	167	895	2	196	879	1	206	959	5	246
No belts used	39	2	24	57	5	32	66	4	33	56	4	27	49	7	30
Child restraint used	0	0	0	0	0	0	0	0	0	0	0	0	0	0	0
Child restraint not used, unavailable or improper use	0	0	0	2	0	0	0	0	0	0	0	0	0	0	0
Restraint failure	3	0	1	7	0	1	7	0	0	4	0	2	1	0	0
Restraint use unknown	182	1	45	180	2	36	169	1	40	214	3	53	262	3	48
Helmet worn	11	1	8	12	2	8	14	2	10	12	0	11	12	1	10
Helmet not worn	29	7	21	22	1	18	19	3	15	30	4	25	21	1	18
Helmet use unknown	1	0	1	6	2	3	1	0	1	1	0	1	2	0	2
Uncoded & errors	4	0	0	7	0	0	10	0	0	0	0	0	0	0	0
Total	1,161	16	290	1,125	14	269	1,206	13	296	1,211	12	327	1,317	17	360

5-Year Trend - Seatbelt Not Used Among Drivers by Age

Age Group	2013			2014			2015			2016			2017		
	Drivers	Fatal Drivers	Injured Drivers	Drivers	Fatal Drivers	Injured Drivers	Drivers	Fatal Drivers	Injured Drivers	Drivers	Fatal Drivers	Injured Drivers	Drivers	Fatal Drivers	Injured Drivers
0 - 15	8	0	2	2	0	0	5	0	1	1	0	0	1	0	0
16 - 20	86	2	15	73	2	22	69	1	13	76	2	16	48	2	19
21 - 24	80	0	19	85	2	16	81	1	19	73	1	11	61	3	17
25 - 64	376	4	72	436	12	89	446	11	78	355	6	81	269	9	76
65 +	46	0	12	56	2	16	47	2	9	54	5	17	32	1	10
Unknown	37	0	1	30	0	0	26	0	0	15	0	0	0	0	0
Total	633	6	121	682	18	143	674	15	120	574	14	125	411	15	122

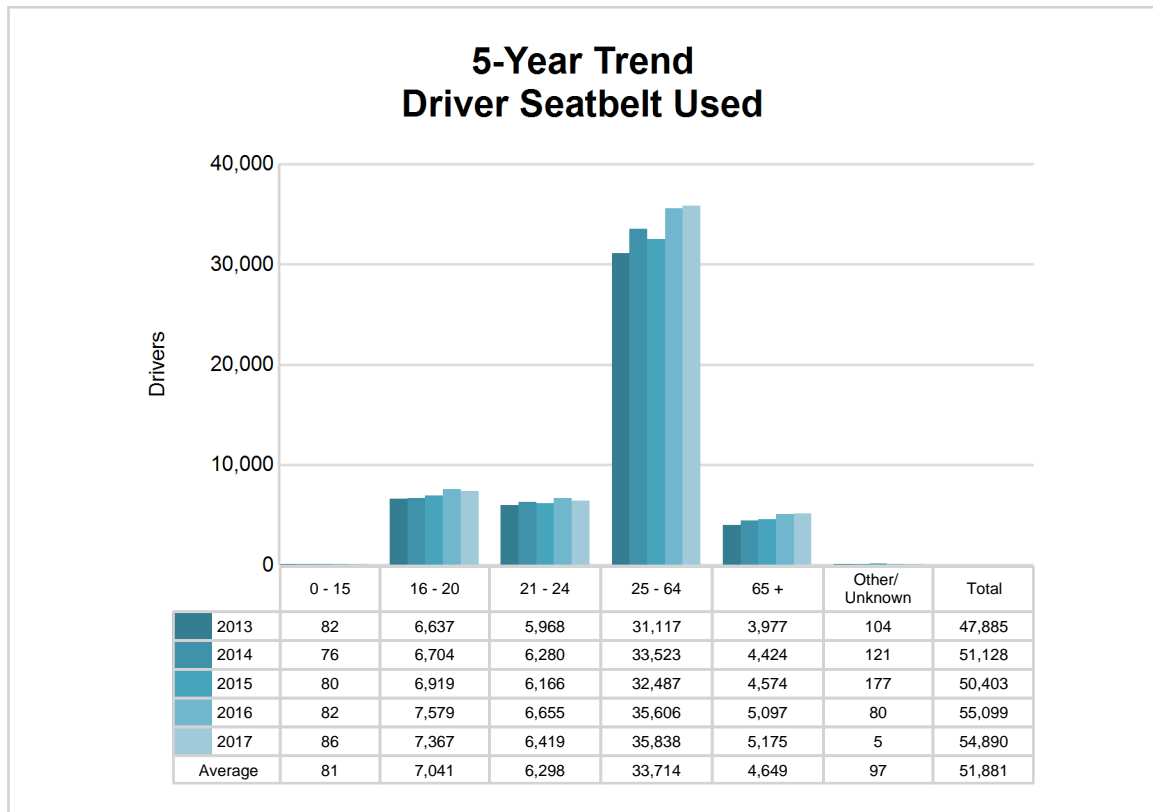
Note: Seatbelt Not Used includes no belts available or no belts used.



5-Year Trend - Seatbelt Used Among Drivers by Age

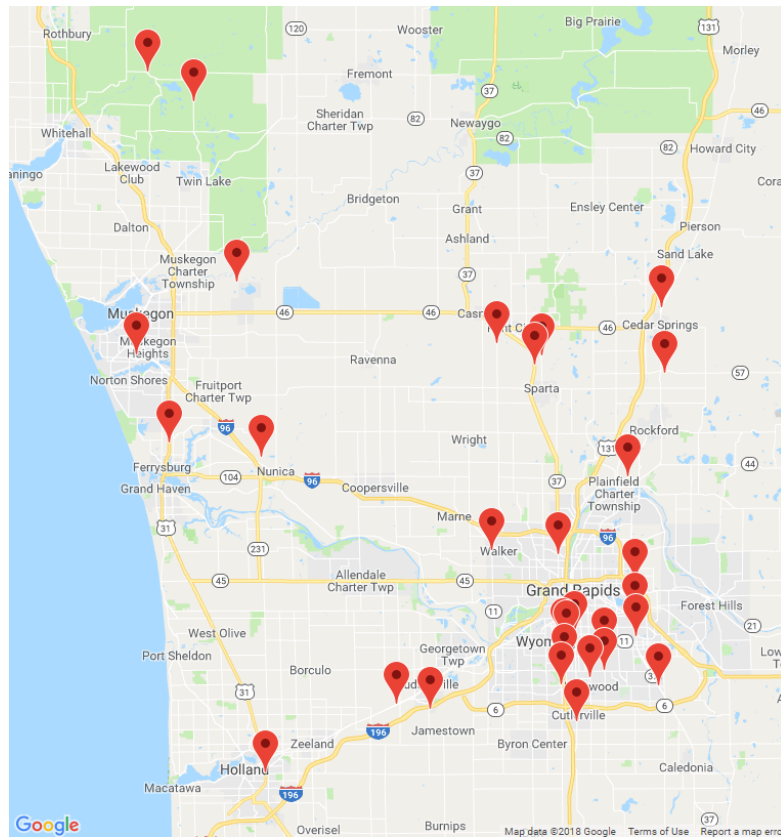
Age Group	2013			2014			2015			2016			2017		
	Drivers	Fatal Drivers	Injured Drivers	Drivers	Fatal Drivers	Injured Drivers	Drivers	Fatal Drivers	Injured Drivers	Drivers	Fatal Drivers	Injured Drivers	Drivers	Fatal Drivers	Injured Drivers
0 - 15	82	0	10	76	0	5	80	0	10	82	0	8	86	0	6
16 - 20	6,637	4	613	6,704	3	575	6,919	4	667	7,579	3	788	7,367	4	744
21 - 24	5,968	4	563	6,280	1	574	6,166	3	544	6,655	5	715	6,419	3	567
25 - 64	31,117	6	3,116	33,523	7	3,213	32,487	14	3,178	35,606	17	3,689	35,838	15	3,605
65 +	3,977	8	480	4,424	12	549	4,574	8	502	5,097	7	602	5,175	12	634
Unknown	104	0	0	121	0	2	177	0	0	80	0	1	5	0	0
Total	47,885	22	4,782	51,128	23	4,918	50,403	29	4,901	55,099	32	5,803	54,890	34	5,556

Note: Seatbelt Used includes shoulder belt only used, lap belt only used, both lap and shoulder belts used, and restraint failure.



5-Year Trend - Drivers in Crashes by Hazardous Action

Hazardous Action	2013		2014		2015		2016		2017	
	Total Drivers in Crashes	Drivers in Fatal Crashes	Total Drivers in Crashes	Drivers in Fatal Crashes	Total Drivers in Crashes	Drivers in Fatal Crashes	Total Drivers in Crashes	Drivers in Fatal Crashes	Total Drivers in Crashes	Drivers in Fatal Crashes
None	27,541	80	30,064	70	29,805	71	32,281	82	31,968	79
Speed too fast	5,186	14	5,137	13	3,728	14	4,153	16	4,211	17
Speed too slow	66	0	95	0	86	1	82	0	40	1
Failed to yield	4,935	11	5,779	14	5,585	11	6,122	16	6,006	14
Disregard traffic control	1,336	11	1,378	6	1,493	9	1,531	19	1,433	12
Drove wrong way	42	0	56	5	59	0	58	0	45	2
Drove left of center	270	5	259	7	234	7	269	4	265	7
Improper passing	244	1	354	0	291	5	345	1	376	1
Improper lane use	1,057	0	1,169	3	1,352	1	1,576	4	1,585	1
Improper turn	520	0	595	0	596	0	618	0	639	0
Improper/no signal	140	0	144	0	135	0	81	0	57	0
Improper backing	984	0	1,039	0	1,043	0	1,076	0	981	0
Unable to stop in assured clear distance	7,919	6	8,137	3	8,385	2	9,350	4	9,423	9
Other	2,117	6	2,176	10	2,028	3	2,104	7	2,178	3
Unknown	1,698	9	1,766	12	1,901	16	2,314	7	2,882	7
Reckless driving	208	1	258	3	276	2	291	6	261	7
Careless/negligent driving	1,047	3	1,191	2	1,292	7	1,350	1	1,351	4
Uncoded & errors	74	0	19	0	4	0	25	0	219	0
Total	55,384	147	59,616	148	58,293	149	63,626	167	63,920	164



The picture above represents all 2017 alcohol-involved fatal crashes in Post 61.

In 2017, there were 1,352 alcohol-involved crashes in Post 61:

31 K - Fatal Crashes

106 A - Suspected Serious Injury Crashes

197 B - Suspected Minor Injury Crashes

204 C - Possible Injury Crashes

814 O - Property Damage Only/No Injury Crashes

Office of Highway Safety Planning

Physical Address:
7150 Harris Drive
Dimondale, Michigan 48821

Mailing Address:
P.O. Box 30634
Lansing, Michigan 48909

Phone: (517) 284-3112
Fax: (517) 284-3151

Find us on the web:
MichiganTrafficCrashFacts.org

