



2017

**MTCF**  
Michigan Traffic  
Crash Facts

# Michigan Traffic Crash Facts

## Reporting Criteria

Please pay particular attention to the wording when interpreting the three levels of data gathered for this report.

### Crash

The Crash Level analyzes data related to crash events and returns one result per crash.

Examples: Time, weather, and location.

### Units

The Units Level analyzes the experience of the units in the crash and returns one result per vehicle, driver, pedestrian, bicyclist, or train.

Examples: Vehicle type, driver condition, and unit events.

### People

The People Level analyzes the experience of the people involved in the crash and returns one result per occupant/person/party.

Examples: Age, injury severity, and seat belt or helmet use.

### **KABCO Injury Indicator:**

K = Killed

A = Suspected Serious Injury

B = Suspected Minor Injury

C = Possible Injury

O = No Injury

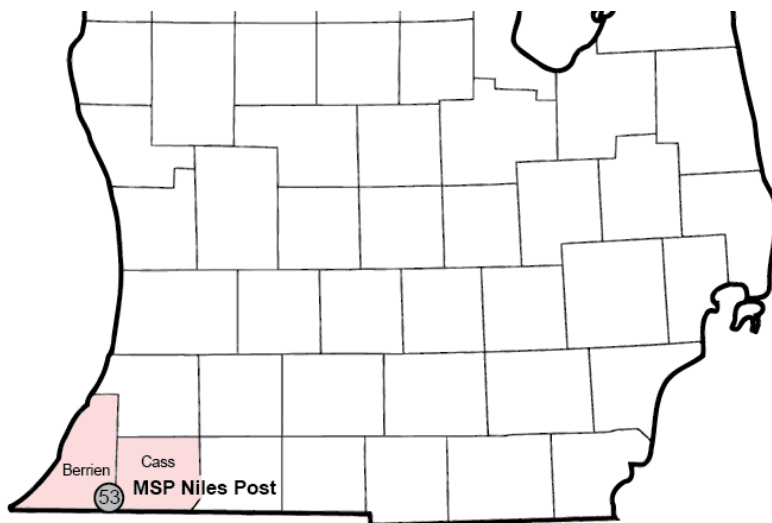
Property Damage Only (PDO)



## Michigan State Police (MSP) Post 53 - Niles

### 2017 Traffic Crash Data & 2013-2017 5-Year Trends

Post 53 is comprised of Berrien and Cass counties. Trend tables for this report are based on those counties.



### Sources:

The crashes in this report occurred on public roadways in Michigan and resulted in injuries, fatalities, or property damage (with \$1,000 as a reporting threshold). The information was gathered from Michigan Traffic Crash Report Forms (UD-10) submitted by local police departments, sheriff's offices, and the Michigan State Police. Other related information was obtained from the departments of Transportation, State, and Community Health.

This page left intentionally blank

## MSP Post 53 - Niles

- There were 6,016 crashes in Post 53 during 2017. [Page 1]
- A total of 35 fatalities resulted from 31 fatal crashes in 2017 in Post 53. [Page 1]
- There were 1,509 injuries and 1,098 injury crashes. [Page 1]
- There were 4,887 property damage only crashes (no fatalities or injuries). [Page 1]
- December had the highest number of crashes (907). [Pages 1-2]
- November had the highest number of fatal crashes (6) and fatalities (7). [Pages 1-2]
- December had the highest number of injury crashes (119) while September had the highest number of injuries (166). [Page 1]
- December had the highest number of property damage only crashes (786). [Page 1]
- Of all vehicles involved in fatal crashes, 2 (4.7%) were motorcycles. [Page 1]
- Friday was the day of the week with the highest number of crashes (1,013) and Sunday and Saturday had the highest number of fatal crashes (6). [Pages 2-3]
- The 3:00 PM - 5:59 PM time period had the highest number of crashes (1,226). This holds true for every year between 2013 and 2017. The 6:00 PM - 8:59 PM and Noon - 2:59 PM time periods had the highest number of fatal crashes (6). [Pages 5-6]
- During the period from 2013 to 2017, the highest number of deer crashes occurred in 2017 (1,306). The 6:00 AM - 8:59 AM time period had the highest number of deer-involved crashes. There were fatal crashes involving deer in 2017. [Pages 7-8]
- Berrien County (76.2%) had the highest number of crashes in Post 53 in 2017, followed by Cass County (23.8%), and (0.0%). [Page 8]
- Berrien County (57.1%) had the highest number of fatalities in Post 53 in 2017, followed by Cass County (42.9%), and (0.0%). [Page 8]
- The highest number of drivers in crashes (9,163) occurred during 2015 and the highest number of drivers coded drinking in crashes (244) occurred during 2015 and 2017 within the five year period between 2013 and 2017. [Page 9]
- A total of 249 crashes involved alcohol in 2017. [Page 10]
- Alcohol-involved fatal crashes were the highest in 2015 and 2017 during the five-year period from 2013 to 2017 at 13. [Page 10]
- A total of 67 crashes, 10 fatal crashes, and 12 suspected serious injury crashes involved drugs in 2017, all the highest during the five-year period. [Page 11]
- There were 7,783 drivers wearing seatbelts and 97 drivers not wearing seatbelts in crashes in 2017. Of the 97 drivers not wearing seat belts, 6 (6.2%) were killed and 36 (37.1%) were injured. [Pages 14-16]
- The most common hazardous action coded for drivers in 2017 in all crashes was speed too fast (993), while the most common hazardous action coded for drivers in fatal crashes was speed too fast (6). [Page 17]

# MSP Post 53 - Niles (continued)

## Post 53 Experience

In 2017:

There were 8,947 drivers involved in 6,016 motor vehicle crashes in MSP Post 53. Of those crashes, 31 were classified as fatal, resulting in 35 fatalities. An additional 1,509 persons were injured.

Post 53 experienced the highest number of motor vehicle crashes (907) in December, the highest number of fatal crashes (6) and the highest number of persons killed (7) in November.

Michigan driver statistics indicate 5.9 percent of licensed drivers in Post 53 were age 16-20, and 10.5 percent of drivers in crashes were also in that age group.

## 2017 - Crashes and Injuries by Month

Month	Crashes				Persons	
	Total	Fatal	Injury	Property Damage Only (PDO)	Fatalities	Injuries
January	614	4	82	528	4	111
February	320	2	62	256	3	84
March	426	1	81	344	1	111
April	375	3	84	288	4	126
May	438	0	89	349	0	129
June	502	1	110	391	1	144
July	438	4	97	337	4	126
August	432	4	96	332	4	128
September	426	4	111	311	5	166
October	573	0	97	476	0	137
November	565	6	70	489	7	98
December	907	2	119	786	2	149
<b>Total</b>	<b>6,016</b>	<b>31</b>	<b>1,098</b>	<b>4,887</b>	<b>35</b>	<b>1,509</b>

## 2017 - Driver Statistics

Age Group	Post 53			Driver Rates	
	2017 Population	Licensed Drivers	Drivers in Crashes	Per 10k Population	Per 10k Licensed
0 - 15	39,262	931	15	3.8	161.1
16 - 20	12,639	8,790	936	740.6	1,064.8
21 - 24	9,374	8,091	788	840.6	973.9
25 - 64	104,141	95,881	5,561	534.0	580.0
65 +	40,224	36,449	1,124	279.4	308.4
Unknown	0	0	523	--	--
<b>Total</b>	<b>205,640</b>	<b>150,142</b>	<b>8,947</b>	<b>435.1</b>	<b>595.9</b>

## 2017 - Vehicles in Crashes

Vehicle Type	Motor Vehicles		Fatal Crashes		Injury Crashes	PDO Crashes
	Number of Vehicles	% of Total	Number	% of Total	Number	Number
Passenger car, SUV, van	7,062	78.9	26	60.5	1,453	5,583
Motor home	16	0.2	1	2.3	0	15
Pickup truck	1,114	12.5	9	20.9	196	909
Small truck under 10,000 lbs. GVWR	83	0.9	0	0.0	18	65
Motorcycle	87	1.0	2	4.7	62	23
Moped / goped	11	0.1	0	0.0	9	2
Go-cart / golf cart	2	0.0	0	0.0	2	0
Snowmobile	2	0.0	0	0.0	1	1
Off-Road Vehicle - ORV / All-Terrain Vehicle - ATV	2	0.0	0	0.0	1	1
Other	41	0.5	0	0.0	6	35
Truck/bus over 10,000 lbs.	352	3.9	5	11.6	69	278
Unknown	175	2.0	0	0.0	18	157
<b>Total</b>	<b>8,947</b>	<b>100.0</b>	<b>43</b>	<b>100.0</b>	<b>1,835</b>	<b>7,069</b>

## 5-Year Trend - Crashes by Month

Month	2013		2014		2015		2016		2017	
	Total Crashes	Fatal Crashes	Total Crashes	Fatal Crashes	Total Crashes	Fatal Crashes	Total Crashes	Fatal Crashes	Total Crashes	Fatal Crashes
January	623	1	955	0	773	3	787	1	614	4
February	628	1	576	0	878	2	613	3	320	2
March	401	4	466	2	379	1	380	2	426	1
April	285	3	329	1	306	1	394	4	375	3
May	374	2	358	4	414	3	396	1	438	0
June	378	3	394	0	422	3	454	3	502	1
July	407	2	409	5	458	3	470	0	438	4
August	341	3	363	1	385	3	412	1	432	4
September	366	6	358	3	387	5	391	1	426	4
October	493	2	561	2	490	4	474	1	573	0
November	732	4	827	1	649	2	600	4	565	6
December	666	5	385	1	573	1	634	4	907	2
<b>Total</b>	<b>5,694</b>	<b>36</b>	<b>5,981</b>	<b>20</b>	<b>6,114</b>	<b>31</b>	<b>6,005</b>	<b>25</b>	<b>6,016</b>	<b>31</b>

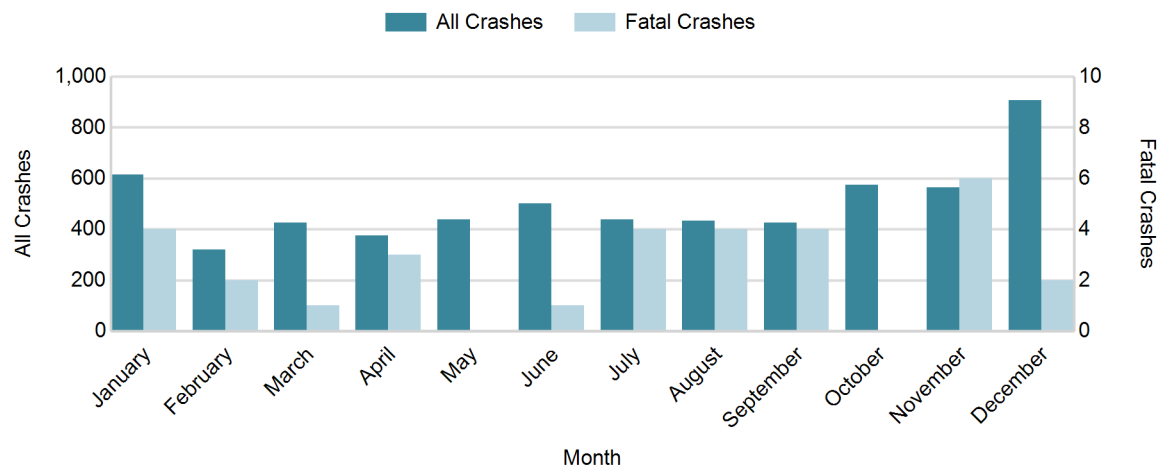
Note: † Indicates that the highest number of total crashes reported in the 5-year period occurred in the same month

## 5-Year Trend - Crashes by Day of Week

Day	2013		2014		2015		2016		2017	
	Total Crashes	Fatal Crashes	Total Crashes	Fatal Crashes	Total Crashes	Fatal Crashes	Total Crashes	Fatal Crashes	Total Crashes	Fatal Crashes
Monday	801	5	740	5	889	3	951	4	849	3
Tuesday	960	3	936	3	793	2	882	5	828	3
Wednesday	964	6	890	2	877	4	853	0	862	5
Thursday	797	6	1,083	3	913	3	831	5	884	3
Friday	838	6	932	3	961	4	901	5	1,013	5
Saturday	716	5	781	2	950	7	795	3	822	6
Sunday	618	5	619	2	731	8	792	3	758	6
<b>Total</b>	<b>5,694</b>	<b>36</b>	<b>5,981</b>	<b>20</b>	<b>6,114</b>	<b>31</b>	<b>6,005</b>	<b>25</b>	<b>6,016</b>	<b>31</b>

Note: † Indicates that the highest number of total crashes reported in the 5-year period occurred on the same day of the week

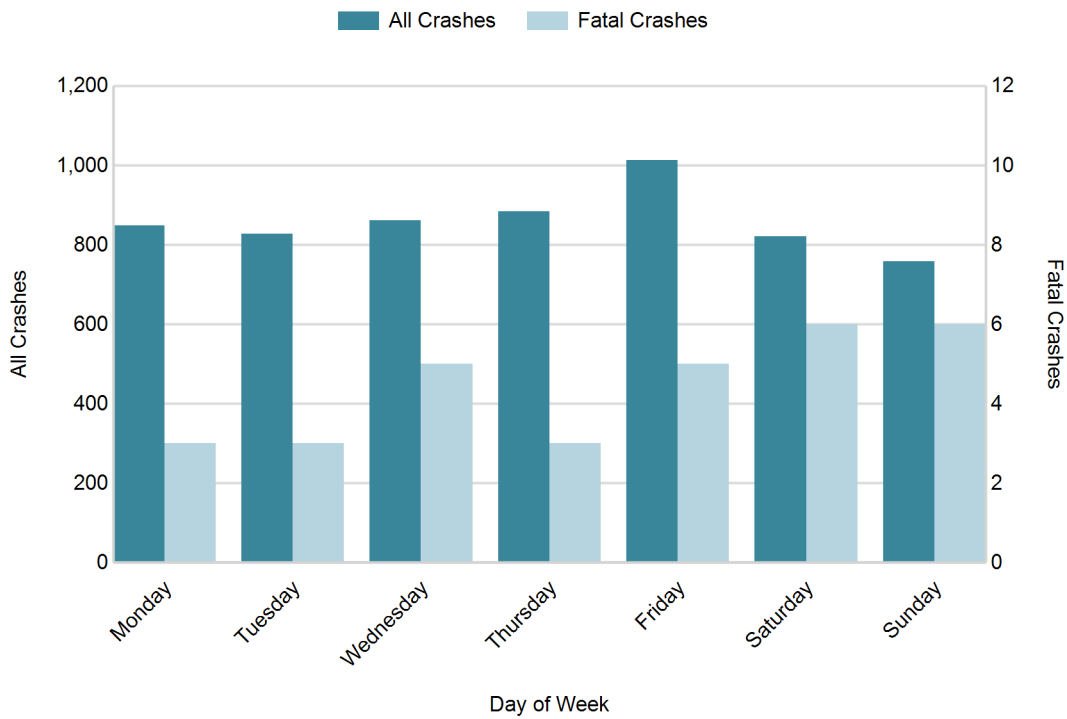
## 2017 Crashes by Month



## 2017 - Crashes by Day of Week

Day	All Crashes		Fatal Crashes		Injury Crashes			PDO Crashes
	Number	% of Total	Number	% of Fatal	A	B	C	Number
Monday	849	14.1	3	9.7	25	47	88	686
Tuesday	828	13.8	3	9.7	26	32	89	678
Wednesday	862	14.3	5	16.1	23	48	94	692
Thursday	884	14.7	3	9.7	16	35	97	733
Friday	1,013	16.8	5	16.1	24	49	117	818
Saturday	822	13.7	6	19.4	19	46	78	673
Sunday	758	12.6	6	19.4	23	51	71	607
<b>Total</b>	<b>6,016</b>	<b>100.0</b>	<b>31</b>	<b>100.0</b>	<b>156</b>	<b>308</b>	<b>634</b>	<b>4,887</b>

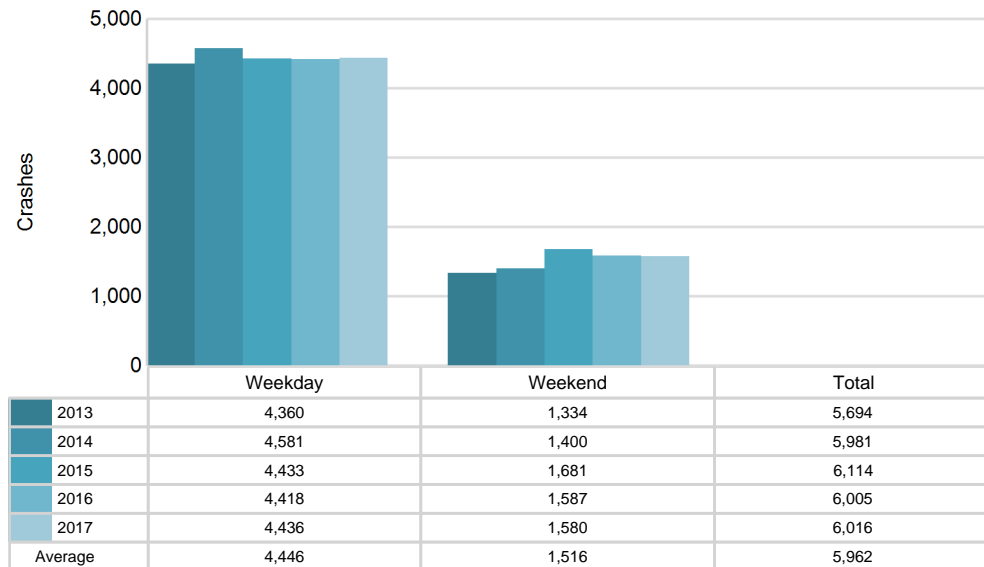
## 2017 Day of Week and Severity



## 5-Year Trend - Crashes by Weekday and Weekend

Portion of Week	2013		2014		2015		2016		2017	
	Total Crashes	Fatal Crashes	Total Crashes	Fatal Crashes	Total Crashes	Fatal Crashes	Total Crashes	Fatal Crashes	Total Crashes	Fatal Crashes
Weekday	4,360	26	4,581	16	4,433	16	4,418	19	4,436	19
Weekend	1,334	10	1,400	4	1,681	15	1,587	6	1,580	12
<b>Total</b>	<b>5,694</b>	<b>36</b>	<b>5,981</b>	<b>20</b>	<b>6,114</b>	<b>31</b>	<b>6,005</b>	<b>25</b>	<b>6,016</b>	<b>31</b>

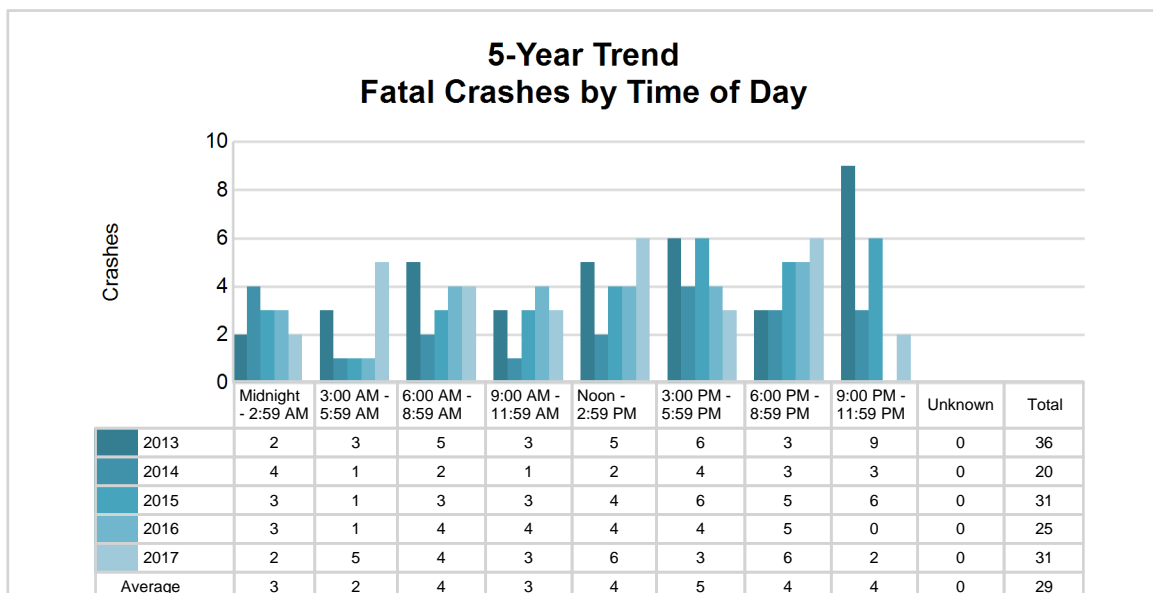
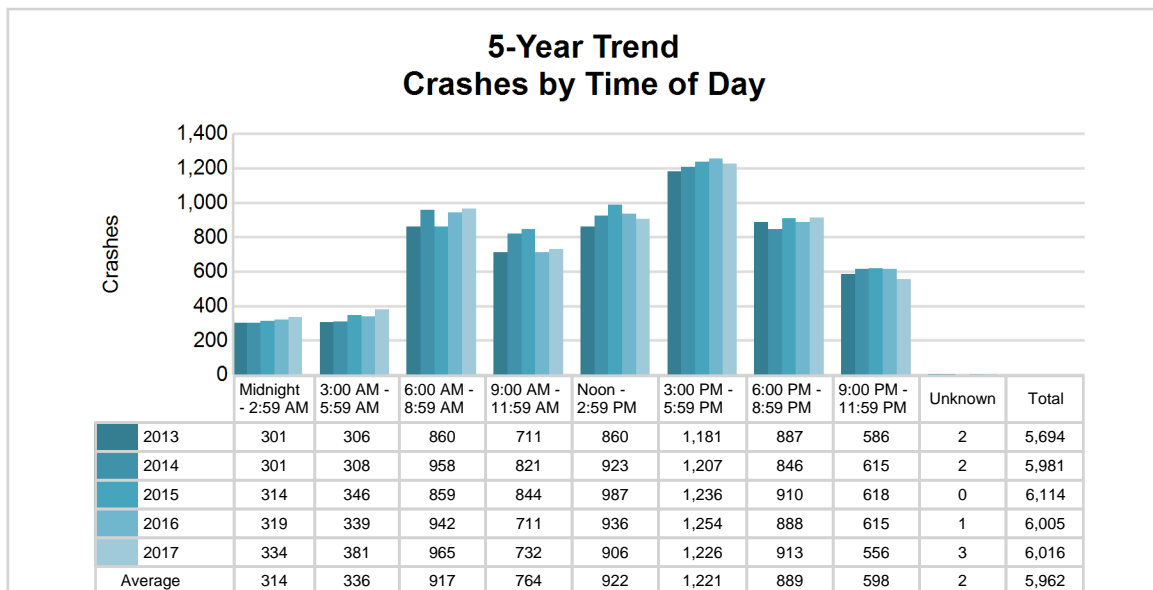
## 5-Year Crash Trends by Weekday (Monday - Friday) and Weekend (Saturday & Sunday)



## 5-Year Trend - Crashes by Time of Day

Time of Day	2013		2014		2015		2016		2017	
	Total Crashes	Fatal Crashes	Total Crashes	Fatal Crashes	Total Crashes	Fatal Crashes	Total Crashes	Fatal Crashes	Total Crashes	Fatal Crashes
Midnight - 2:59 AM	301	2	301	4	314	3	319	3	334	2
3:00 AM - 5:59 AM	306	3	308	1	346	1	339	1	381	5
6:00 AM - 8:59 AM	860	5	958	2	859	3	942	4	965	4
9:00 AM - 11:59 AM	711	3	821	1	844	3	711	4	732	3
Noon - 2:59 PM	860	5	923	2	987	4	936	4	906	6
3:00 PM - 5:59 PM	1,181 †	6	1,207 †	4	1,236 †	6	1,254 †	4	1,226 †	3
6:00 PM - 8:59 PM	887	3	846	3	910	5	888	5	913	6
9:00 PM - 11:59 PM	586	9	615	3	618	6	615	0	556	2
Unknown	2	0	2	0	0	0	1	0	3	0
<b>Total</b>	<b>5,694</b>	<b>36</b>	<b>5,981</b>	<b>20</b>	<b>6,114</b>	<b>31</b>	<b>6,005</b>	<b>25</b>	<b>6,016</b>	<b>31</b>

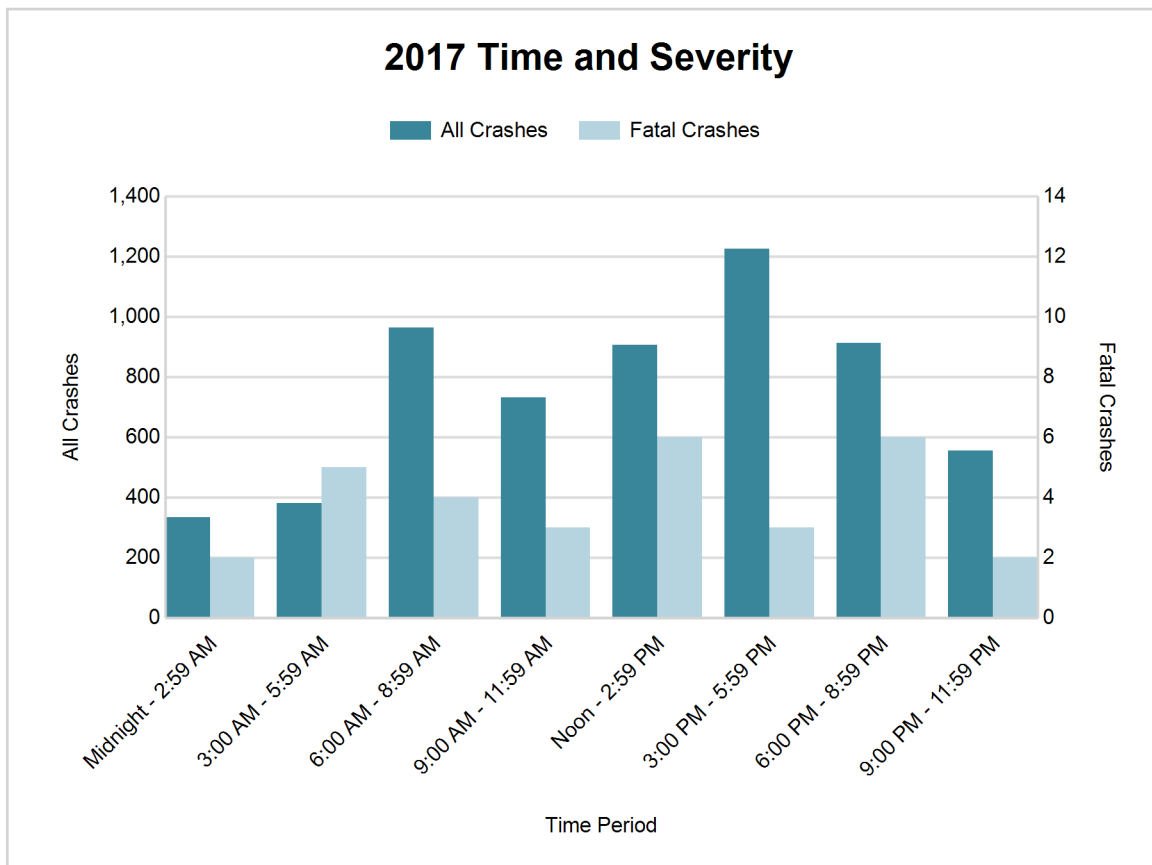
Note: † Indicates that the highest number of total crashes reported in the 5-year period occurred in the same time period





## 2017 - Time and Severity

Time of Day	All Crashes		Fatal Crashes		Injury Crashes			PDO Crashes
	Number	% of Total	Number	% of Fatal	A	B	C	Number
Midnight - 2:59 AM	334	5.6	2	6.5	8	21	30	273
3:00 AM - 5:59 AM	381	6.3	5	16.1	7	18	32	319
6:00 AM - 8:59 AM	965	16.0	4	12.9	23	38	91	809
9:00 AM - 11:59 AM	732	12.2	3	9.7	21	39	70	599
Noon - 2:59 PM	906	15.1	6	19.4	22	53	117	708
3:00 PM - 5:59 PM	1,226	20.4	3	9.7	33	71	164	955
6:00 PM - 8:59 PM	913	15.2	6	19.4	26	43	82	756
9:00 PM - 11:59 PM	556	9.2	2	6.5	16	24	48	466
Unknown	3	0.0	0	0.0	0	1	0	2
<b>Total</b>	<b>6,016</b>	<b>100.0</b>	<b>31</b>	<b>100.0</b>	<b>156</b>	<b>308</b>	<b>634</b>	<b>4,887</b>

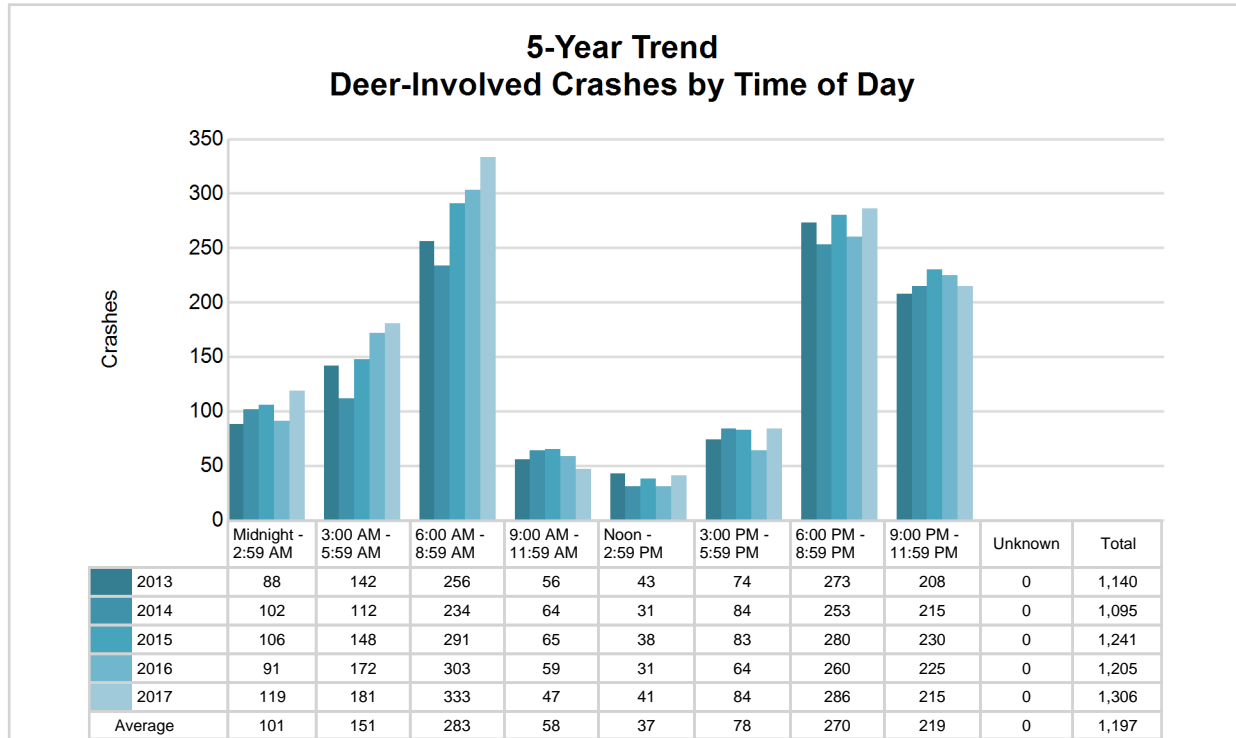


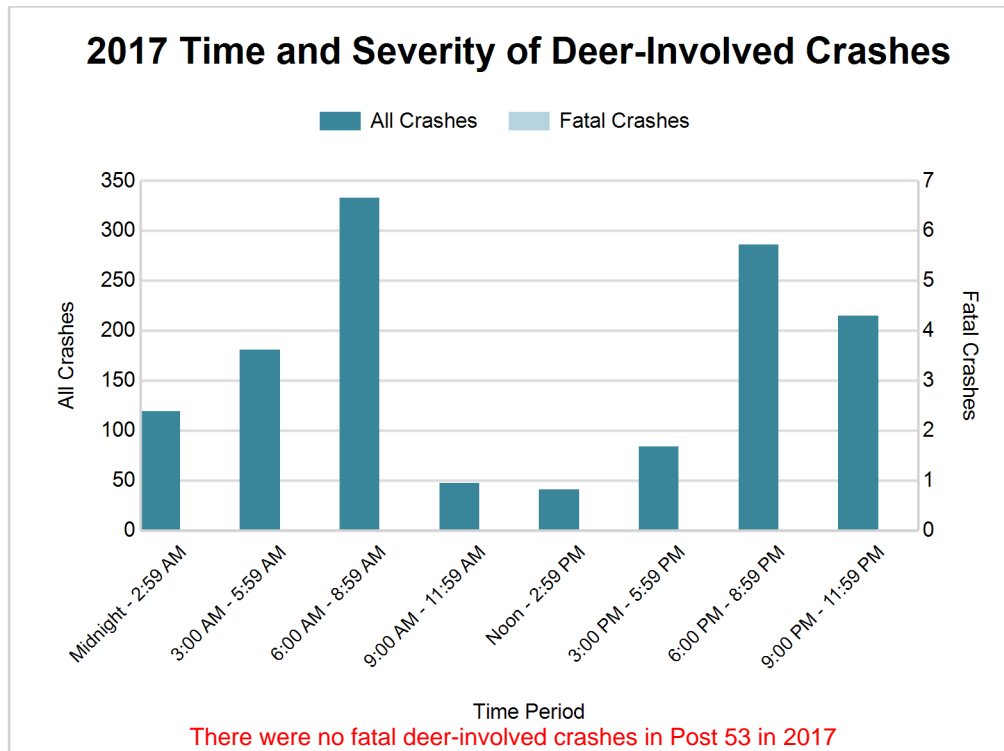
## MSP Post 53 - Niles (continued)

### 5-Year Trend - Deer-Involved Crashes by Time of Day

Time of Day	2013		2014		2015		2016		2017	
	Total Crashes	Fatal Crashes	Total Crashes	Fatal Crashes	Total Crashes	Fatal Crashes	Total Crashes	Fatal Crashes	Total Crashes	Fatal Crashes
Midnight - 2:59 AM	88	0	102	0	106	0	91	0	119	0
3:00 AM - 5:59 AM	142	0	112	0	148	0	172	0	181	0
6:00 AM - 8:59 AM	256	0	234	0	291	0	303	0	333	0
9:00 AM - 11:59 AM	56	0	64	0	65	0	59	0	47	0
Noon - 2:59 PM	43	0	31	0	38	0	31	0	41	0
3:00 PM - 5:59 PM	74	0	84	0	83	0	64	0	84	0
6:00 PM - 8:59 PM	273	0	253	0	280	0	260	0	286	0
9:00 PM - 11:59 PM	208	0	215	0	230	0	225	0	215	0
Unknown	0	0	0	0	0	0	0	0	0	0
<b>Total</b>	<b>1,140</b>	<b>0</b>	<b>1,095</b>	<b>0</b>	<b>1,241</b>	<b>0</b>	<b>1,205</b>	<b>0</b>	<b>1,306</b>	<b>0</b>

Note: † Indicates that the highest number of total crashes reported in the 5-year period occurred in the same time period





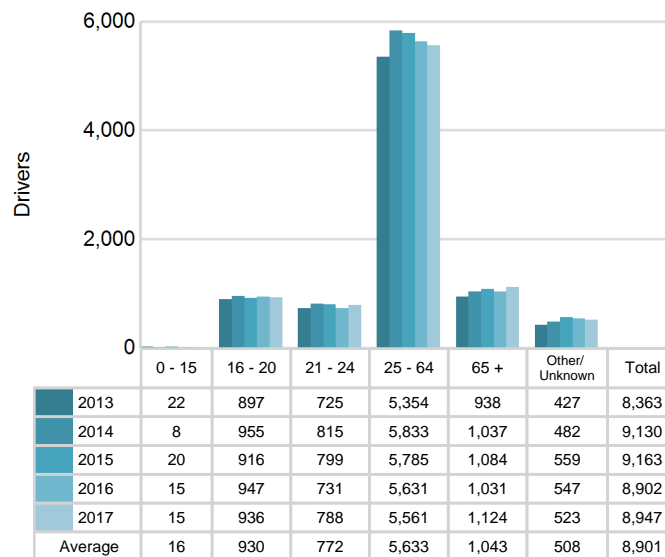
#### 2017 - Reported Motor Vehicle Crashes by County

County	Crashes											Persons	
	Total	Fatal	Injury	Property Damage	Inter-state	US Route	State Route	Local Street	Alcohol-Involved	Drug-Involved	Deer-Involved	Fatalities	Injuries
Berrien	4,585	18	831	3,736	1,034	427	938	2,175	172	45	847	20	1,157
Cass	1,431	13	267	1,151	0	170	439	817	77	22	459	15	352
<b>Total</b>	<b>6,016</b>	<b>31</b>	<b>1,098</b>	<b>4,887</b>	<b>1,034</b>	<b>597</b>	<b>1,377</b>	<b>2,992</b>	<b>249</b>	<b>67</b>	<b>1,306</b>	<b>35</b>	<b>1,509</b>

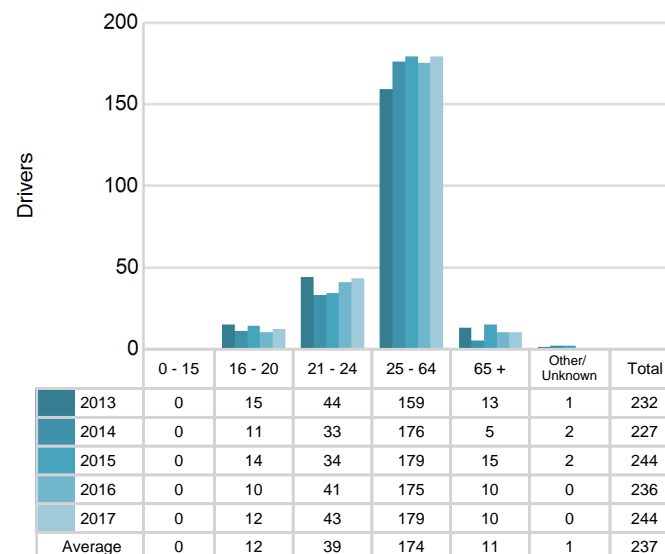
## 5-Year Trend - Drivers in Crashes Coded Drinking by Driver Age

Driver Age	2013		2014		2015		2016		2017	
	Total Drivers in Crashes	Total Drivers Coded Drinking	Total Drivers in Crashes	Total Drivers Coded Drinking	Total Drivers in Crashes	Total Drivers Coded Drinking	Total Drivers in Crashes	Total Drivers Coded Drinking	Total Drivers in Crashes	Total Drivers Coded Drinking
0 - 15	22	0	8	0	20	0	15	0	15	0
16 - 20	897	15	955	11	916	14	947	10	936	12
21 - 24	725	44	815	33	799	34	731	41	788	43
25 - 64	5,354	159	5,833	176	5,785	179	5,631	175	5,561	179
65 +	938	13	1,037	5	1,084	15	1,031	10	1,124	10
Unknown	427	1	482	2	559	2	547	0	523	0
<b>Total</b>	<b>8,363</b>	<b>232</b>	<b>9,130</b>	<b>227</b>	<b>9,163</b>	<b>244</b>	<b>8,902</b>	<b>236</b>	<b>8,947</b>	<b>244</b>

**5-Year Trend**  
**Total Drivers in Crashes by Age**



**5-Year Trend**  
**Total Drivers Coded Drinking by Age**



**2017 - Bodily Alcohol Concentration (BAC) Results Among All Vehicle Drivers in Alcohol-Involved Crashes by Age**

Age Group	Drivers				BAC Result Range for Drivers Coded Drinking				
	Total Drivers in Alcohol-Involved Crashes	Total Drivers Tested in all Crashes	Total Drivers Coded Drinking, Tested	Total Drivers Coded Drinking	BAC = 0.00	BAC 0.01 g/dL to 0.07 g/dL	BAC 0.08 g/dL to 0.16 g/dL	BAC 0.17 g/dL and Above	BAC Not Reported
0 - 15	0	0	0	0	0	0	0	0	0
16 - 20	19	20	9	12	2	4	2	2	2
21 - 24	51	54	39	43	0	5	13	16	9
25 - 64	246	199	153	179	1	23	34	69	52
65 +	23	24	9	10	0	2	2	5	1
Unknown	15	0	0	0	0	0	0	0	0
<b>Total</b>	<b>354</b>	<b>297</b>	<b>210</b>	<b>244</b>	<b>3</b>	<b>34</b>	<b>51</b>	<b>92</b>	<b>64</b>

Notes: BAC measured in grams (g) per deciliter (dL).

BAC may not be reported if drivers are not tested or if the results are not available immediately (as in the case of a blood test).

A driver may be coded by the officer as drinking even though no test is administered.

**Alcohol-Involved Crashes**

In 2017, there were 354 drivers in alcohol-involved crashes; 244 (68.9%) of those drivers were coded as had-been-drinking by the officer on the crash form.

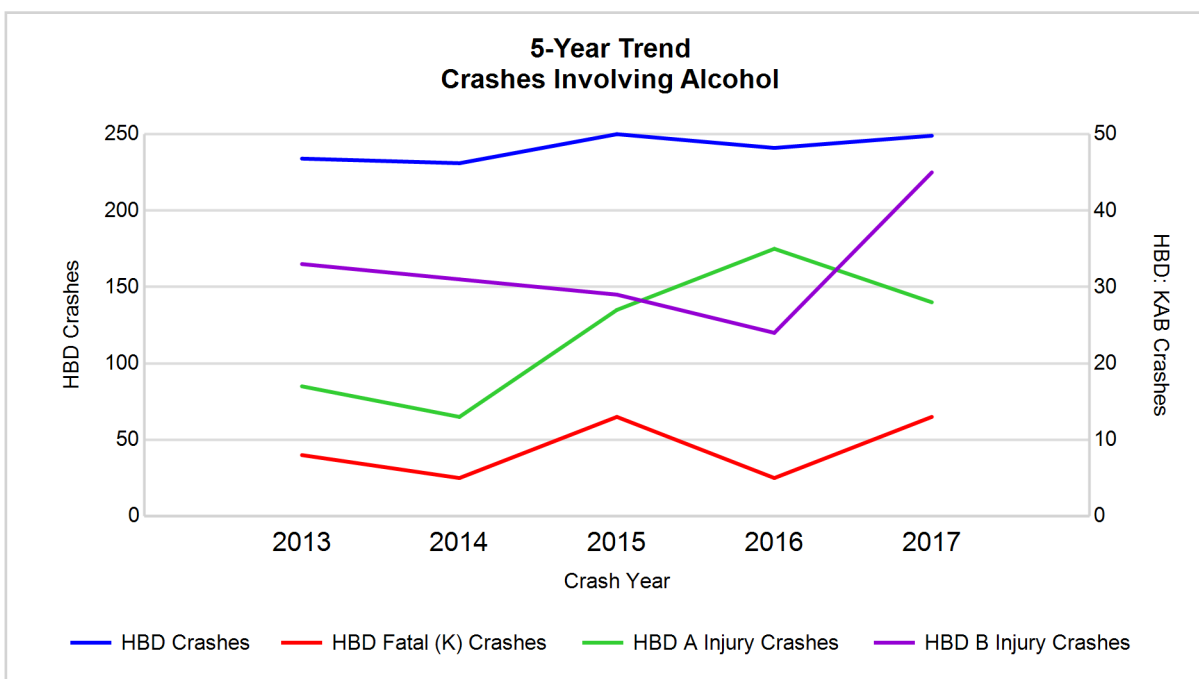
- 143 (58.6%) of the 244 drivers had a blood alcohol concentration (BAC) of 0.08 g/dL (grams per deciliter) or greater, and 92 (64.3%) of the 143 drivers had a BAC at or above 0.17 g/dL.
- 210 (86.1%) of the 244 drivers were coded as had-been-drinking and were tested for alcohol consumption.

**5-Year Trend - Crashes Involving Alcohol**

Year	All Crashes	HBD Crashes	% HBD	Fatal Crashes	HBD Fatal Crashes	% HBD	A Injury Crashes	HBD A Injury Crashes	% HBD	B Injury Crashes	HBD B Injury Crashes	% HBD
2013	5,694	234	4.1	36	8	22.2	81	17	21.0	254	33	13.0
2014	5,981	231	3.9	20	5	25.0	91	13	14.3	258	31	12.0
2015	6,114	250	4.1	31	13	41.9	102	27	26.5	230	29	12.6
2016	6,005	241	4.0	25	5	20.0	120	35	29.2	279	24	8.6
2017	6,016	249	4.1	31	13	41.9	156**	28	17.9	308**	45**	14.6**

Note: \* Indicates that the most recent year is the lowest number or percentage reported in the 5-year period in that column

\*\* Indicates that the most recent year is the highest number or percentage reported in the 5-year period in that column



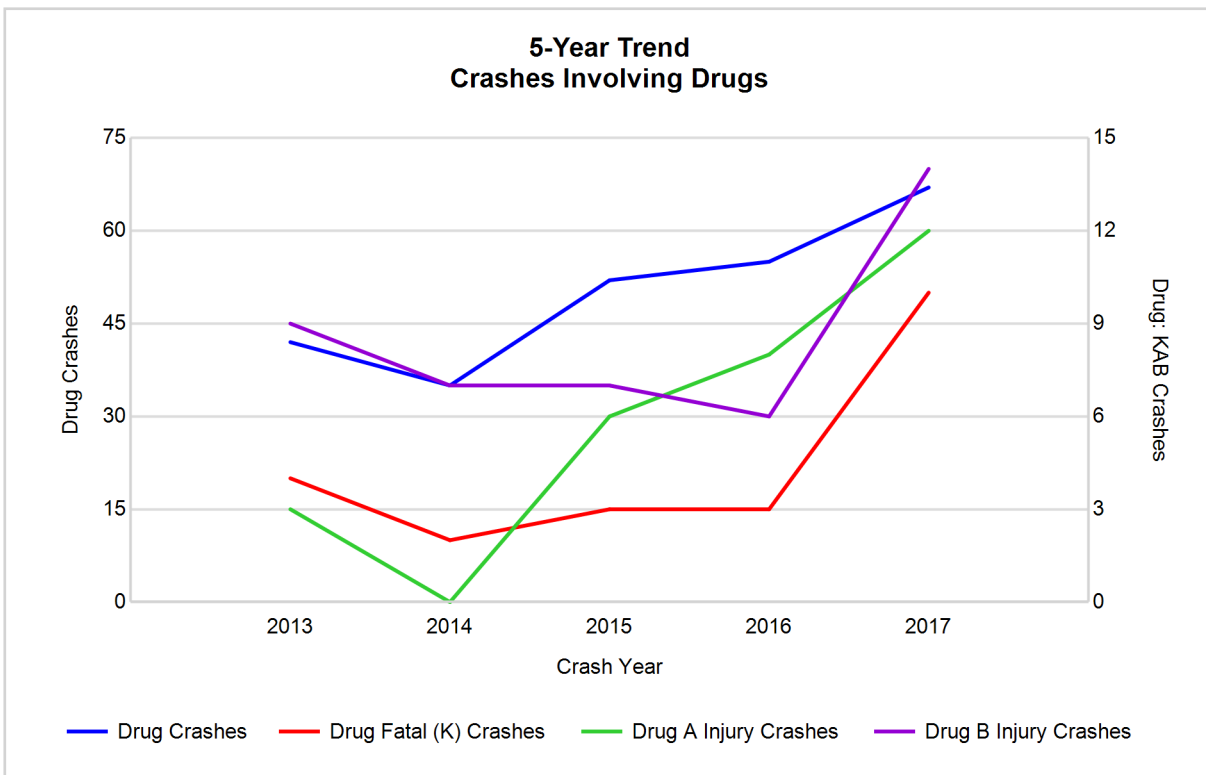
Note: Had-Been-Drinking (HBD)

## 5-Year Trend - Crashes Involving Drugs

Year	All Crashes	Drug Crashes	% Drug	Fatal Crashes	Drug Fatal Crashes	% Drug	A Injury Crashes	Drug A Injury Crashes	% Drug	B Injury Crashes	Drug B Injury Crashes	% Drug
2013	5,694	42	0.7	36	4	11.1	81	3	3.7	254	9	3.5
2014	5,981	35	0.6	20	2	10.0	91	0	0.0	258	7	2.7
2015	6,114	52	0.9	31	3	9.7	102	6	5.9	230	7	3.0
2016	6,005	55	0.9	25	3	12.0	120	8	6.7	279	6	2.2
2017	6,016	67**	1.1**	31	10**	32.3**	156**	12**	7.7**	308**	14**	4.5**

Note: \* Indicates that the most recent year is the lowest number or percentage reported in the 5-year period in that column

\*\* Indicates that the most recent year is the highest number or percentage reported in the 5-year period in that column

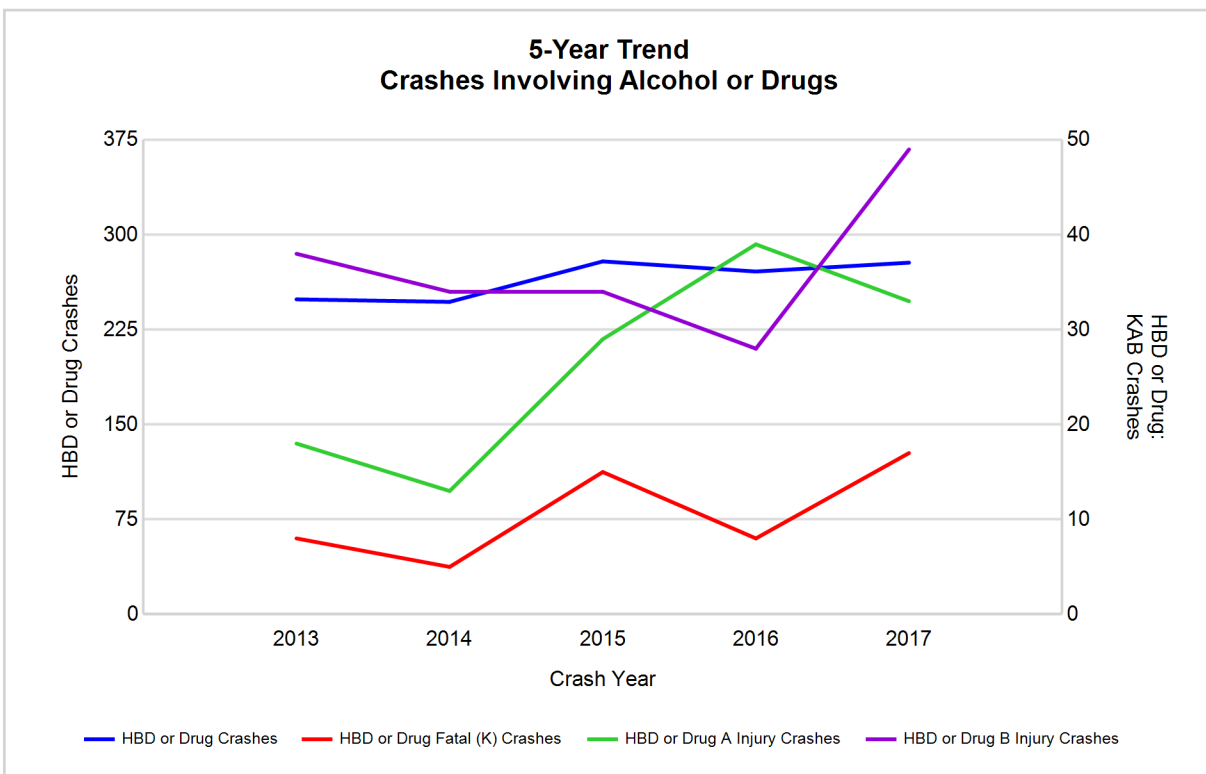


## 5-Year Trend - Crashes Involving Alcohol or Drugs

Year	All Crashes	HBD or Drug Crashes	% HBD or Drug	Fatal Crashes	HBD or Drug Fatal Crashes	% HBD or Drug	A Injury Crashes	HBD or Drug A Injury Crashes	% HBD or Drug	B Injury Crashes	HBD or Drug B Injury Crashes	% HBD or Drug
2013	5,694	249	4.4	36	8	22.2	81	18	22.2	254	38	15.0
2014	5,981	247	4.1	20	5	25.0	91	13	14.3	258	34	13.2
2015	6,114	279	4.6	31	15	48.4	102	29	28.4	230	34	14.8
2016	6,005	271	4.5	25	8	32.0	120	39	32.5	279	28	10.0
2017	6,016	278	4.6	31	17**	54.8**	156**	33	21.2	308**	49**	15.9**

Note: \* Indicates that the most recent year is the lowest number or percentage reported in the 5-year period in that column

\*\* Indicates that the most recent year is the highest number or percentage reported in the 5-year period in that column



Note: Had-Been-Drinking (HBD)

## 2017 - Restraints Worn Among Vehicle Drivers and Injured Passengers by Vehicle Type

Vehicle Type	Total Occupants			Fatalities			A - Suspected Serious			B - Suspected Minor			C - Possible Injury			No Injury		
	Total	Used Restraint	%	Total	Used Restraint	%	Total	Used Restraint	%	Total	Used Restraint	%	Total	Used Restraint	%	Total	Used Restraint	%
Passenger car, SUV, van	7,372	6,608	89.6	18	8	44.4	116	76	65.5	263	233	88.6	803	748	93.2	5,859	5,543	94.6
Motor home	16	13	81.3	1	0	0.0	0	0	0.0	0	0	0.0	0	0	0.0	14	13	92.9
Pickup truck	1,149	1,031	89.7	6	2	33.3	12	8	66.7	45	37	82.2	86	78	90.7	959	906	94.5
Small truck under 10,000 lbs. GVWR	87	80	92.0	0	0	0.0	2	2	100.0	3	3	100.0	10	8	80.0	70	67	95.7
Motorcycle	96	51	53.1	3	1	33.3	25	15	60.0	27	11	40.7	17	12	70.6	23	12	52.2
Moped / goped	11	2	18.2	0	0	0.0	2	1	50.0	4	1	25.0	3	0	0.0	2	0	0.0
Go-cart / golf cart	4	0	0.0	0	0	0.0	1	0	0.0	1	0	0.0	2	0	0.0	0	0	0.0
Snowmobile	2	2	100.0	0	0	0.0	1	1	100.0	0	0	0.0	0	0	0.0	1	1	100.0
Off-Road Vehicle - ORV / All-Terrain Vehicle - ATV	2	1	50.0	0	0	0.0	1	1	100.0	0	0	0.0	0	0	0.0	1	0	0.0
Other	44	28	63.6	0	0	0.0	4	2	50.0	1	0	0.0	0	0	0.0	36	26	72.2
Truck/bus over 10,000 lbs.	359	333	92.8	1	1	100.0	2	2	100.0	9	8	88.9	23	19	82.6	313	303	96.8
Unknown	175	0	0.0	0	0	0.0	0	0	0.0	0	0	0.0	0	0	0.0	0	0	0.0
<b>Total</b>	<b>9,317</b>	<b>8,149</b>	<b>87.5</b>	<b>29</b>	<b>12</b>	<b>41.4</b>	<b>166</b>	<b>108</b>	<b>65.1</b>	<b>353</b>	<b>293</b>	<b>83.0</b>	<b>944</b>	<b>865</b>	<b>91.6</b>	<b>7,278</b>	<b>6,871</b>	<b>94.4</b>

Note: Restraint Use includes shoulder belt only used, lap belt only used, both lap and shoulder belts used, child restraint used, restraint failure, and helmet worn.

## 2017 - Restraints Worn Among Vehicle Drivers and Injured Passengers by Age

Age Group	Total Occupants			Fatalities			A - Suspected Serious			B - Suspected Minor			C - Possible Injury			No Injury		
	Total	Used Restraint	%	Total	Used Restraint	%	Total	Used Restraint	%	Total	Used Restraint	%	Total	Used Restraint	%	Total	Used Restraint	%
0 - 15	112	95	84.8	2	0	0.0	6	6	100.0	20	17	85.0	73	64	87.7	11	8	72.7
16 - 20	999	935	93.6	1	1	100.0	20	13	65.0	53	46	86.8	113	104	92.0	811	771	95.1
21 - 24	809	742	91.7	3	1	33.3	9	3	33.3	40	30	75.0	94	86	91.5	660	622	94.2
25 - 64	5,716	5,286	92.5	21	9	42.9	109	70	64.2	196	158	80.6	549	506	92.2	4,823	4,543	94.2
65 +	1,158	1,091	94.2	2	1	50.0	22	16	72.7	44	42	95.5	115	105	91.3	973	927	95.3
Unknown	523	0	0.0	0	0	0.0	0	0	0.0	0	0	0.0	0	0	0.0	0	0	0.0
<b>Total</b>	<b>9,317</b>	<b>8,149</b>	<b>87.5</b>	<b>29</b>	<b>12</b>	<b>41.4</b>	<b>166</b>	<b>108</b>	<b>65.1</b>	<b>353</b>	<b>293</b>	<b>83.0</b>	<b>944</b>	<b>865</b>	<b>91.6</b>	<b>7,278</b>	<b>6,871</b>	<b>94.4</b>

Note: Restraint Use includes shoulder belt only used, lap belt only used, both lap and shoulder belts used, child restraint used, restraint failure, and helmet worn.



## 5-Year Trend - Restraint Use Among Drivers

Restraint Use	2013			2014			2015			2016			2017		
	Drivers	Fatal Drivers	Injured Drivers	Drivers	Fatal Drivers	Injured Drivers	Drivers	Fatal Drivers	Injured Drivers	Drivers	Fatal Drivers	Injured Drivers	Drivers	Fatal Drivers	Injured Drivers
No belts available	61	1	8	42	0	2	53	0	5	36	0	7	18	0	3
Shoulder belt only used	15	0	1	8	0	0	6	0	0	62	0	12	65	1	13
Lap belt only used	32	0	3	40	0	7	47	0	9	29	0	5	18	0	0
Both lap & shoulder belts used	7,348	18	816	8,050	5	838	7,973	9	859	7,703	12	959	7,692	9	901
No belts used	101	4	33	93	4	29	80	1	27	76	0	29	79	6	33
Child restraint used	0	0	0	0	0	0	0	0	0	0	0	0	0	0	0
Child restraint not used, unavailable or improper use	0	0	0	0	0	0	0	0	0	0	0	0	0	0	0
Restraint failure	3	0	0	6	0	0	0	0	0	3	0	0	8	0	1
Restraint use unknown	310	3	51	323	1	43	367	4	34	702	3	40	963	3	78
Helmet worn	37	1	25	46	0	32	41	3	25	51	0	40	51	1	37
Helmet not worn	37	0	29	30	3	20	32	3	23	41	0	33	42	1	30
Helmet use unknown	6	1	4	5	0	3	4	0	3	7	1	4	7	0	5
Uncoded & errors	413	0	2	487	0	0	560	0	0	192	0	1	4	0	0
<b>Total</b>	<b>8,363</b>	<b>28</b>	<b>972</b>	<b>9,130</b>	<b>13</b>	<b>974</b>	<b>9,163</b>	<b>20</b>	<b>985</b>	<b>8,902</b>	<b>16</b>	<b>1,130</b>	<b>8,947</b>	<b>21</b>	<b>1,101</b>

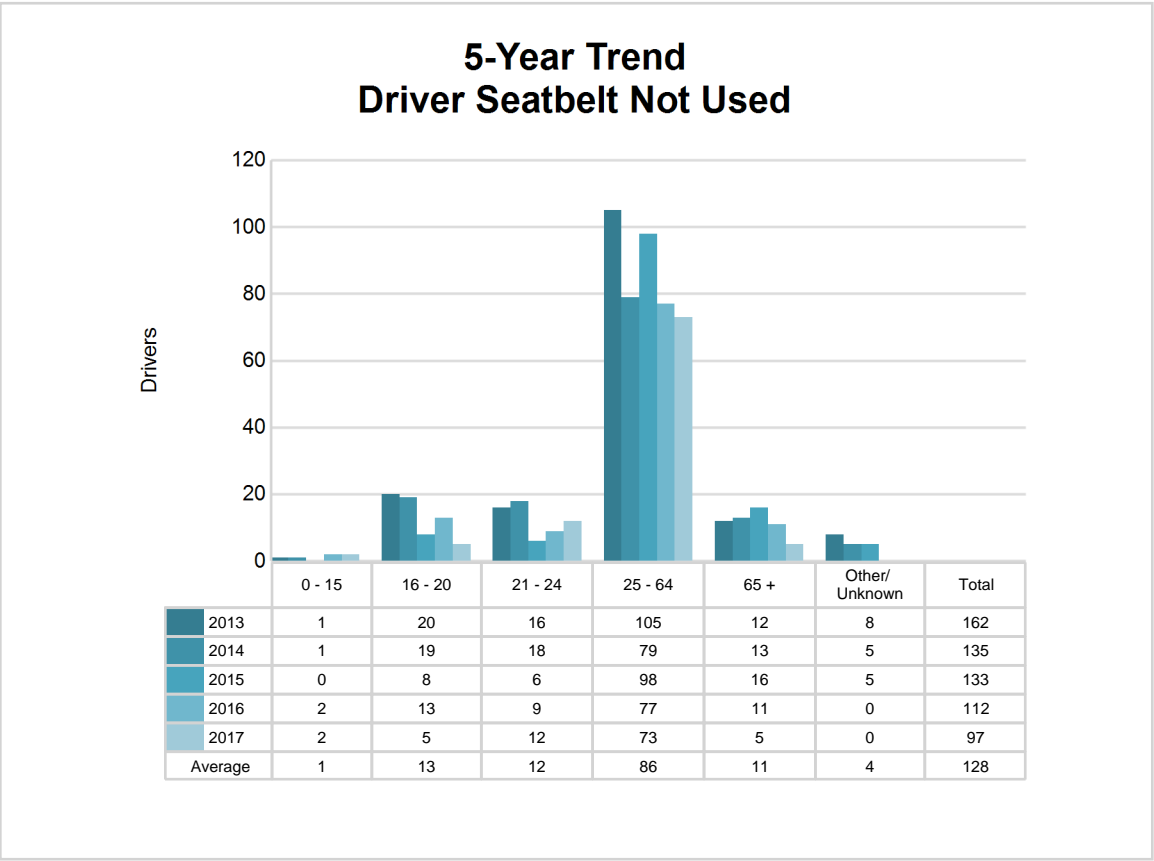
## 5-Year Trend - Restraint Use Among Drivers Coded Drinking

Restraint Use	2013			2014			2015			2016			2017		
	Drivers	Fatal Drivers	Injured Drivers	Drivers	Fatal Drivers	Injured Drivers	Drivers	Fatal Drivers	Injured Drivers	Drivers	Fatal Drivers	Injured Drivers	Drivers	Fatal Drivers	Injured Drivers
No belts available	2	0	1	1	0	0	4	0	2	0	0	0	0	0	0
Shoulder belt only used	1	0	1	1	0	0	0	0	0	4	0	1	3	1	2
Lap belt only used	1	0	0	1	0	0	2	0	1	0	0	0	0	0	0
Both lap & shoulder belts used	163	3	51	162	0	46	176	2	58	174	2	66	171	3	64
No belts used	19	2	12	13	0	8	20	0	13	16	0	11	20	4	11
Child restraint used	0	0	0	0	0	0	0	0	0	0	0	0	0	0	0
Child restraint not used, unavailable or improper use	0	0	0	0	0	0	0	0	0	0	0	0	0	0	0
Restraint failure	0	0	0	0	0	0	0	0	0	0	0	0	0	0	0
Restraint use unknown	36	0	14	40	0	10	33	1	12	30	0	4	40	0	20
Helmet worn	3	0	3	3	0	3	4	1	2	0	0	0	3	1	2
Helmet not worn	6	0	5	5	1	2	3	0	2	12	0	10	6	1	4
Helmet use unknown	0	0	0	0	0	0	0	0	0	0	0	0	1	0	1
Uncoded & errors	1	0	0	1	0	0	2	0	0	0	0	0	0	0	0
<b>Total</b>	<b>232</b>	<b>5</b>	<b>87</b>	<b>227</b>	<b>1</b>	<b>69</b>	<b>244</b>	<b>4</b>	<b>90</b>	<b>236</b>	<b>2</b>	<b>92</b>	<b>244</b>	<b>10</b>	<b>104</b>

5-Year Trend - Seatbelt Not Used Among Drivers by Age

Age Group	2013			2014			2015			2016			2017		
	Drivers	Fatal Drivers	Injured Drivers	Drivers	Fatal Drivers	Injured Drivers	Drivers	Fatal Drivers	Injured Drivers	Drivers	Fatal Drivers	Injured Drivers	Drivers	Fatal Drivers	Injured Drivers
0 - 15	1	0	0	1	0	0	0	0	0	2	0	1	2	0	1
16 - 20	20	1	6	19	0	9	8	0	2	13	0	7	5	0	1
21 - 24	16	0	10	18	1	3	6	0	0	9	0	2	12	2	5
25 - 64	105	3	23	79	3	17	98	1	27	77	0	24	73	4	26
65 +	12	1	2	13	0	2	16	0	3	11	0	2	5	0	3
Unknown	8	0	0	5	0	0	5	0	0	0	0	0	0	0	0
Total	162	5	41	135	4	31	133	1	32	112	0	36	97	6	36

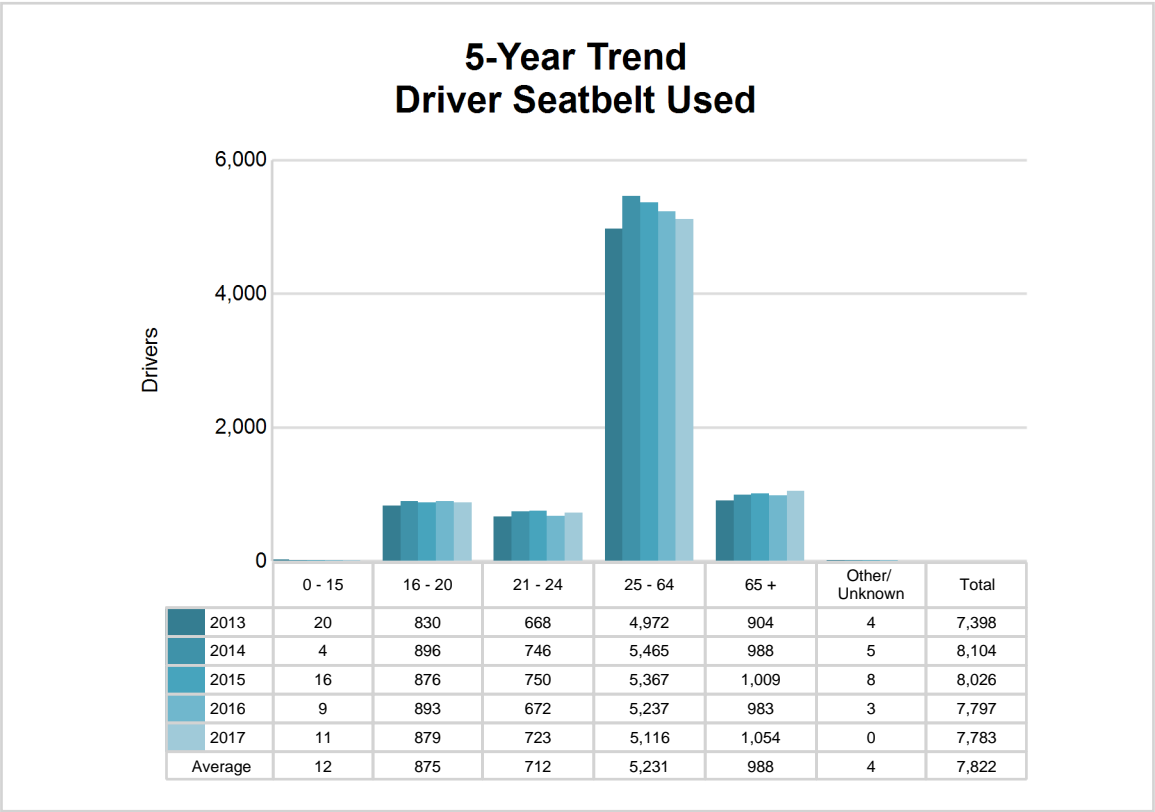
Note: Seatbelt Not Used includes no belts available or no belts used.



5-Year Trend - Seatbelt Used Among Drivers by Age

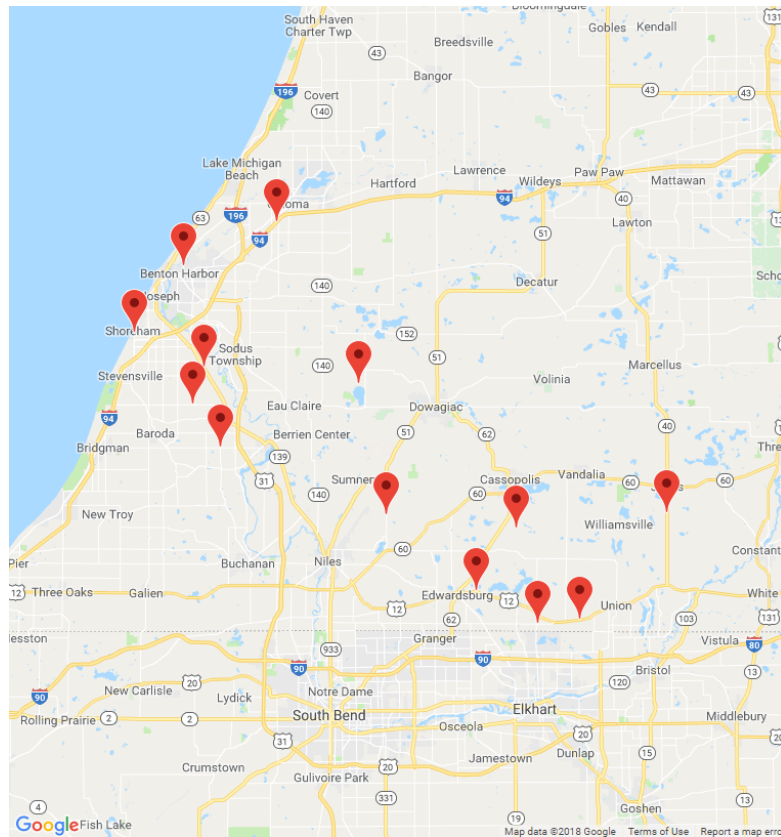
Age Group	2013			2014			2015			2016			2017		
	Drivers	Fatal Drivers	Injured Drivers	Drivers	Fatal Drivers	Injured Drivers	Drivers	Fatal Drivers	Injured Drivers	Drivers	Fatal Drivers	Injured Drivers	Drivers	Fatal Drivers	Injured Drivers
0 - 15	20	0	4	4	0	0	16	0	5	9	0	2	11	0	3
16 - 20	830	3	88	896	1	85	876	1	103	893	2	116	879	0	108
21 - 24	668	2	84	746	0	99	750	3	89	672	0	84	723	1	101
25 - 64	4,972	4	513	5,465	4	564	5,367	3	544	5,237	7	647	5,116	8	577
65 +	904	9	131	988	0	97	1,009	2	127	983	3	127	1,054	1	126
Unknown	4	0	0	5	0	0	8	0	0	3	0	0	0	0	0
Total	7,398	18	820	8,104	5	845	8,026	9	868	7,797	12	976	7,783	10	915

Note: Seatbelt Used includes shoulder belt only used, lap belt only used, both lap and shoulder belts used, and restraint failure.



## 5-Year Trend - Drivers in Crashes by Hazardous Action

Hazardous Action	2013		2014		2015		2016		2017	
	Total Drivers in Crashes	Drivers in Fatal Crashes	Total Drivers in Crashes	Drivers in Fatal Crashes	Total Drivers in Crashes	Drivers in Fatal Crashes	Total Drivers in Crashes	Drivers in Fatal Crashes	Total Drivers in Crashes	Drivers in Fatal Crashes
None	4,256	26	4,718	12	4,792	16	4,527	18	4,602	15
Speed too fast	1,237	5	1,152	5	1,134	4	1,113	3	993	6
Speed too slow	17	0	14	0	16	0	11	0	12	1
Failed to yield	676	3	828	4	761	3	798	7	871	3
Disregard traffic control	142	2	141	2	132	0	142	3	114	1
Drove wrong way	5	0	5	0	9	0	5	0	4	0
Drove left of center	56	3	74	1	69	4	61	2	54	2
Improper passing	52	0	62	0	56	1	46	0	36	0
Improper lane use	90	0	98	1	102	0	107	0	90	0
Improper turn	53	0	72	0	73	0	61	0	66	0
Improper/no signal	22	1	27	0	17	0	24	0	7	0
Improper backing	126	0	141	0	154	0	134	0	125	1
Unable to stop in assured clear distance	738	3	837	1	882	1	787	1	798	0
Other	374	5	413	0	399	4	370	2	334	4
Unknown	183	6	218	2	233	5	333	2	461	4
Reckless driving	61	1	45	1	50	2	49	1	72	2
Careless/negligent driving	270	4	284	3	284	4	333	3	307	4
Uncoded & errors	5	0	1	0	0	0	1	0	1	0
<b>Total</b>	<b>8,363</b>	<b>59</b>	<b>9,130</b>	<b>32</b>	<b>9,163</b>	<b>44</b>	<b>8,902</b>	<b>42</b>	<b>8,947</b>	<b>43</b>



The picture above represents all 2017 alcohol-involved fatal crashes in Post 53.

In 2017, there were 249 alcohol-involved crashes in Post 53:

- 13 K - Fatal Crashes
- 28 A - Suspected Serious Injury Crashes
- 45 B - Suspected Minor Injury Crashes
- 48 C - Possible Injury Crashes
- 115 O - Property Damage Only/No Injury Crashes

### Office of Highway Safety Planning

---

Physical Address:  
7150 Harris Drive  
Dimondale, Michigan 48821

Mailing Address:  
P.O. Box 30634  
Lansing, Michigan 48909

Phone: (517) 284-3112  
Fax: (517) 284-3151

Find us on the web:  
[MichiganTrafficCrashFacts.org](http://MichiganTrafficCrashFacts.org)

