



2017

**MTCF**  
Michigan Traffic  
Crash Facts

# Michigan Traffic Crash Facts

## Reporting Criteria

Please pay particular attention to the wording when interpreting the three levels of data gathered for this report.

### Crash

The Crash Level analyzes data related to crash events and returns one result per crash.

Examples: Time, weather, and location.

### Units

The Units Level analyzes the experience of the units in the crash and returns one result per vehicle, driver, pedestrian, bicyclist, or train.

Examples: Vehicle type, driver condition, and unit events.

### People

The People Level analyzes the experience of the people involved in the crash and returns one result per occupant/person/party.

Examples: Age, injury severity, and seat belt or helmet use.

### **KABCO Injury Indicator:**

K = Killed

A = Suspected Serious Injury

B = Suspected Minor Injury

C = Possible Injury

O = No Injury

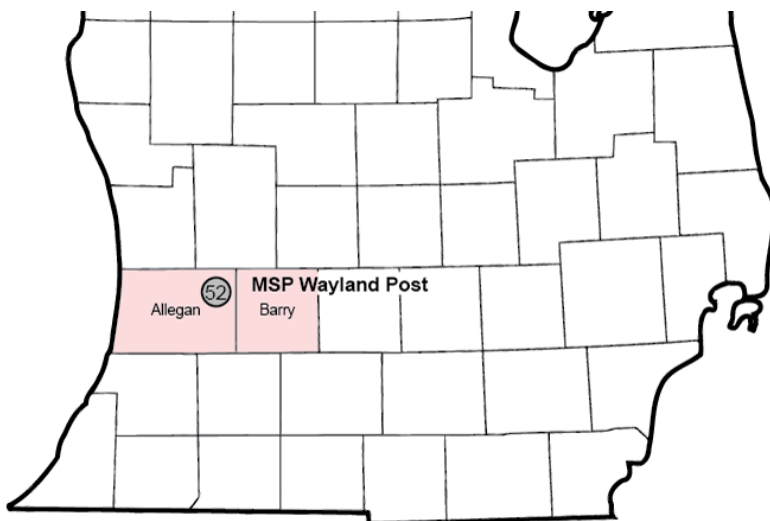
Property Damage Only (PDO)



## Michigan State Police (MSP) Post 52 - Wayland

### 2017 Traffic Crash Data & 2013-2017 5-Year Trends

Post 52 is comprised of Allegan and Barry counties. Trend tables for this report are based on those counties.



### Sources:

The crashes in this report occurred on public roadways in Michigan and resulted in injuries, fatalities, or property damage (with \$1,000 as a reporting threshold). The information was gathered from Michigan Traffic Crash Report Forms (UD-10) submitted by local police departments, sheriff's offices, and the Michigan State Police. Other related information was obtained from the departments of Transportation, State, and Community Health.

This page left intentionally blank

## MSP Post 52 - Wayland

- There were 5,131 crashes in Post 52 during 2017. [Page 1]
- A total of 24 fatalities resulted from 23 fatal crashes in 2017 in Post 52. [Page 1]
- There were 1,108 injuries and 786 injury crashes. [Page 1]
- There were 4,322 property damage only crashes (no fatalities or injuries). [Page 1]
- December had the highest number of crashes (731). [Pages 1-2]
- June had the highest number of fatal crashes (4) and fatalities (4). [Pages 1-2]
- July had the highest number of injury crashes (89) while August had the highest number of injuries (121). [Page 1]
- December had the highest number of property damage only crashes (652). [Page 1]
- Of all vehicles involved in fatal crashes, 6 (19.4%) were motorcycles. [Page 1]
- Friday was the day of the week with the highest number of crashes (878) and Sunday had the highest number of fatal crashes (7). [Pages 2-3]
- The 3:00 PM - 5:59 PM time period had the highest number of crashes (968). The 6:00 PM - 8:59 PM time period had the highest number of fatal crashes (8). [Pages 5-6]
- During the period from 2013 to 2017, the highest number of deer crashes occurred in 2017 (1,612). The 6:00 AM - 8:59 AM time period had the highest number of deer-involved crashes. There were 1 fatal crashes involving deer in 2017. [Pages 7-8]
- Allegan County (71.9%) had the highest number of crashes in Post 52 in 2017, followed by Barry County (28.1%), and (0.0%). [Page 8]
- Allegan County (54.2%) had the highest number of fatalities in Post 52 in 2017, followed by Barry County (45.8%), and (0.0%). [Page 8]
- The highest number of drivers in crashes (7,238) occurred during 2016 and the highest number of drivers coded drinking in crashes (250) occurred during 2017 within the five year period between 2013 and 2017. [Page 9]
- A total of 250 crashes involved alcohol in 2017. [Page 10]
- Alcohol-involved fatal crashes were the highest in 2013 during the five-year period from 2013 to 2017 at 8. [Page 10]
- A total of 62 crashes, 4 fatal crashes, and 12 suspected serious injury crashes involved drugs in 2017. [Page 11]
- There were 6,602 drivers wearing seatbelts and 66 drivers not wearing seatbelts in crashes in 2017. Of the 66 drivers not wearing seat belts, 4 (6.1%) were killed and 22 (33.3%) were injured. [Pages 14-16]
- The most common hazardous action coded for drivers in 2017 in all crashes was speed too fast (772), while the most common hazardous action coded for drivers in fatal crashes was other (4). [Page 17]

# MSP Post 52 - Wayland (continued)

## Post 52 Experience

In 2017:

There were 7,114 drivers involved in 5,131 motor vehicle crashes in MSP Post 52. Of those crashes, 23 were classified as fatal, resulting in 24 fatalities. An additional 1,108 persons were injured.

Post 52 experienced the highest number of motor vehicle crashes (731) in December, the highest number of fatal crashes (4) and the highest number of persons killed (4) in June.

Michigan driver statistics indicate 7.1 percent of licensed drivers in Post 52 were age 16-20, and 13.3 percent of drivers in crashes were also in that age group.

## 2017 - Crashes and Injuries by Month

Month	Crashes				Persons	
	Total	Fatal	Injury	Property Damage Only (PDO)	Fatalities	Injuries
January	556	2	60	494	2	81
February	326	0	36	290	0	57
March	310	3	50	257	3	68
April	300	1	50	249	1	72
May	376	2	61	313	3	91
June	398	4	82	312	4	115
July	370	2	89	279	2	120
August	346	3	85	258	3	121
September	382	2	77	303	2	106
October	458	3	64	391	3	97
November	578	1	53	524	1	73
December	731	0	79	652	0	107
<b>Total</b>	<b>5,131</b>	<b>23</b>	<b>786</b>	<b>4,322</b>	<b>24</b>	<b>1,108</b>

## 2017 - Driver Statistics

Age Group	Post 52			Driver Rates	
	2017 Population	Licensed Drivers	Drivers in Crashes	Per 10k Population	Per 10k Licensed
0 - 15	36,669	1,178	16	4.4	135.8
16 - 20	11,112	9,596	949	854.0	989.0
21 - 24	8,054	7,892	624	774.8	790.7
25 - 64	91,567	88,832	4,551	497.0	512.3
65 +	29,631	28,134	706	238.3	250.9
Unknown	0	0	268	--	--
<b>Total</b>	<b>177,033</b>	<b>135,632</b>	<b>7,114</b>	<b>401.8</b>	<b>524.5</b>

## 2017 - Vehicles in Crashes

Vehicle Type	Motor Vehicles		Fatal Crashes		Injury Crashes	PDO Crashes
	Number of Vehicles	% of Total	Number	% of Total	Number	Number
Passenger car, SUV, van	5,495	77.2	16	50.0	967	4,512
Motor home	21	0.3	0	0.0	5	16
Pickup truck	1,075	15.1	8	25.0	187	880
Small truck under 10,000 lbs. GVWR	50	0.7	0	0.0	8	42
Motorcycle	72	1.0	6	18.8	49	17
Moped / goped	4	0.1	0	0.0	4	0
Go-cart / golf cart	0	0.0	0	0.0	0	0
Snowmobile	0	0.0	0	0.0	0	0
Off-Road Vehicle - ORV / All-Terrain Vehicle - ATV	6	0.1	0	0.0	4	2
Other	39	0.5	0	0.0	4	35
Truck/bus over 10,000 lbs.	219	3.1	1	3.1	34	184
Unknown	133	1.9	1	3.1	15	117
<b>Total</b>	<b>7,114</b>	<b>100.0</b>	<b>32</b>	<b>100.0</b>	<b>1,277</b>	<b>5,805</b>

## 5-Year Trend - Crashes by Month

Month	2013		2014		2015		2016		2017	
	Total Crashes	Fatal Crashes	Total Crashes	Fatal Crashes	Total Crashes	Fatal Crashes	Total Crashes	Fatal Crashes	Total Crashes	Fatal Crashes
January	566	2	712	1	637	0	645	1	556	2
February	603	0	524	3	473	4	460	0	326	0
March	346	1	390	1	301	3	314	1	310	3
April	256	0	241	2	215	2	350	4	300	1
May	297	2	263	2	299	1	391	1	376	2
June	346	4	340	4	354	1	361	2	398	4
July	294	3	308	3	332	3	312	3	370	2
August	293	4	324	2	297	2	316	0	346	3
September	318	3	287	1	277	0	338	1	382	2
October	446	2	434	0	460	0	494	2	458	3
November	599	3	774	2	582	1	550	2	578	1
December	556	1	391	1	413	3	705	3	731	0
<b>Total</b>	<b>4,920</b>	<b>25</b>	<b>4,988</b>	<b>22</b>	<b>4,640</b>	<b>20</b>	<b>5,236</b>	<b>20</b>	<b>5,131</b>	<b>23</b>

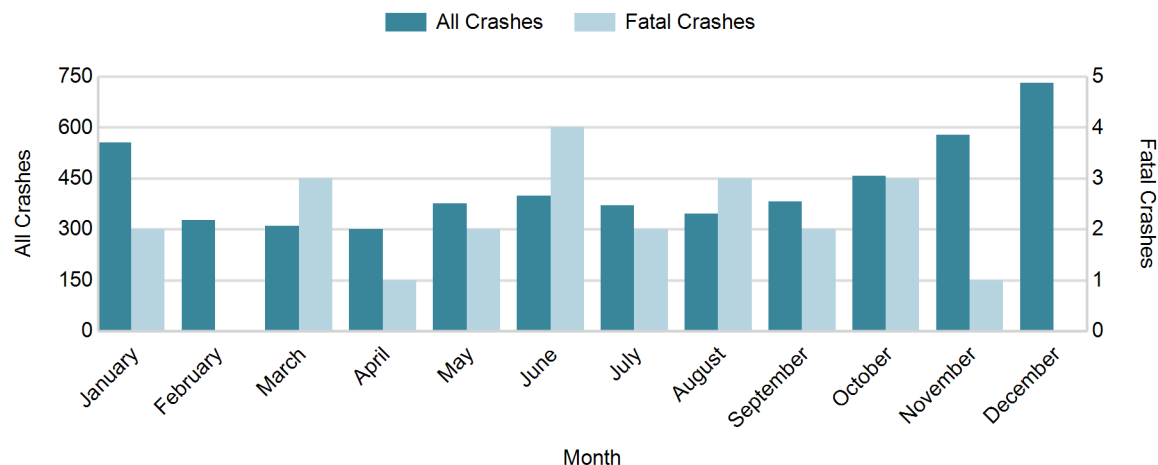
Note: † Indicates that the highest number of total crashes reported in the 5-year period occurred in the same month

## 5-Year Trend - Crashes by Day of Week

Day	2013		2014		2015		2016		2017	
	Total Crashes	Fatal Crashes	Total Crashes	Fatal Crashes	Total Crashes	Fatal Crashes	Total Crashes	Fatal Crashes	Total Crashes	Fatal Crashes
Monday	733	5	672	2	651	1	763	3	716	2
Tuesday	754	1	705	2	682	4	782	3	723	3
Wednesday	756	5	702	7	698	6	701	3	731	5
Thursday	724	4	849	2	703	3	768	2	813	3
Friday	680	3	877	1	708	0	824	3	878	1
Saturday	725	5	621	6	695	3	775	4	710	2
Sunday	548	2	562	2	503	3	623	2	560	7
<b>Total</b>	<b>4,920</b>	<b>25</b>	<b>4,988</b>	<b>22</b>	<b>4,640</b>	<b>20</b>	<b>5,236</b>	<b>20</b>	<b>5,131</b>	<b>23</b>

Note: † Indicates that the highest number of total crashes reported in the 5-year period occurred on the same day of the week

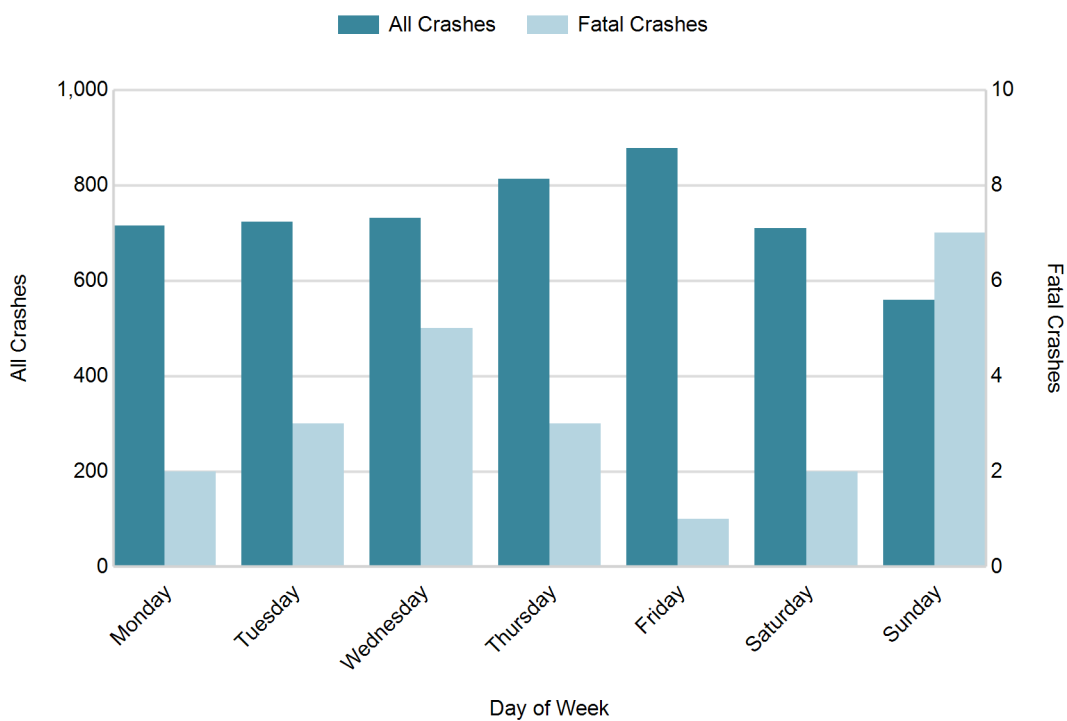
## 2017 Crashes by Month



## 2017 - Crashes by Day of Week

Day	All Crashes		Fatal Crashes		Injury Crashes			PDO Crashes
	Number	% of Total	Number	% of Fatal	A	B	C	Number
Monday	716	14.0	2	8.7	13	38	50	613
Tuesday	723	14.1	3	13.0	12	32	55	621
Wednesday	731	14.2	5	21.7	19	30	48	629
Thursday	813	15.8	3	13.0	7	42	54	707
Friday	878	17.1	1	4.3	18	47	78	734
Saturday	710	13.8	2	8.7	27	55	54	572
Sunday	560	10.9	7	30.4	19	34	54	446
<b>Total</b>	<b>5,131</b>	<b>100.0</b>	<b>23</b>	<b>100.0</b>	<b>115</b>	<b>278</b>	<b>393</b>	<b>4,322</b>

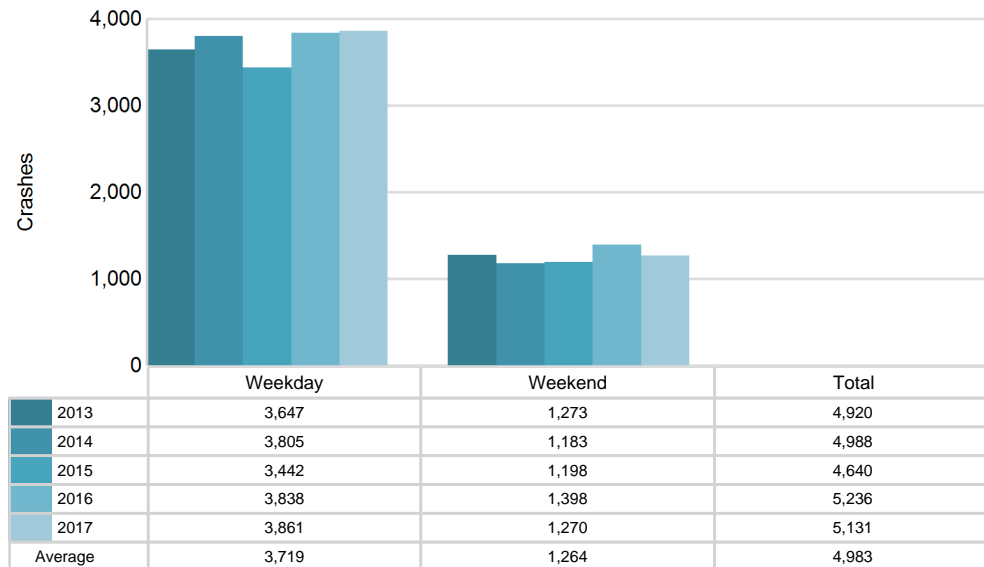
## 2017 Day of Week and Severity



## 5-Year Trend - Crashes by Weekday and Weekend

Portion of Week	2013		2014		2015		2016		2017	
	Total Crashes	Fatal Crashes	Total Crashes	Fatal Crashes	Total Crashes	Fatal Crashes	Total Crashes	Fatal Crashes	Total Crashes	Fatal Crashes
Weekday	3,647	18	3,805	14	3,442	14	3,838	14	3,861	14
Weekend	1,273	7	1,183	8	1,198	6	1,398	6	1,270	9
<b>Total</b>	<b>4,920</b>	<b>25</b>	<b>4,988</b>	<b>22</b>	<b>4,640</b>	<b>20</b>	<b>5,236</b>	<b>20</b>	<b>5,131</b>	<b>23</b>

## 5-Year Crash Trends by Weekday (Monday - Friday) and Weekend (Saturday & Sunday)

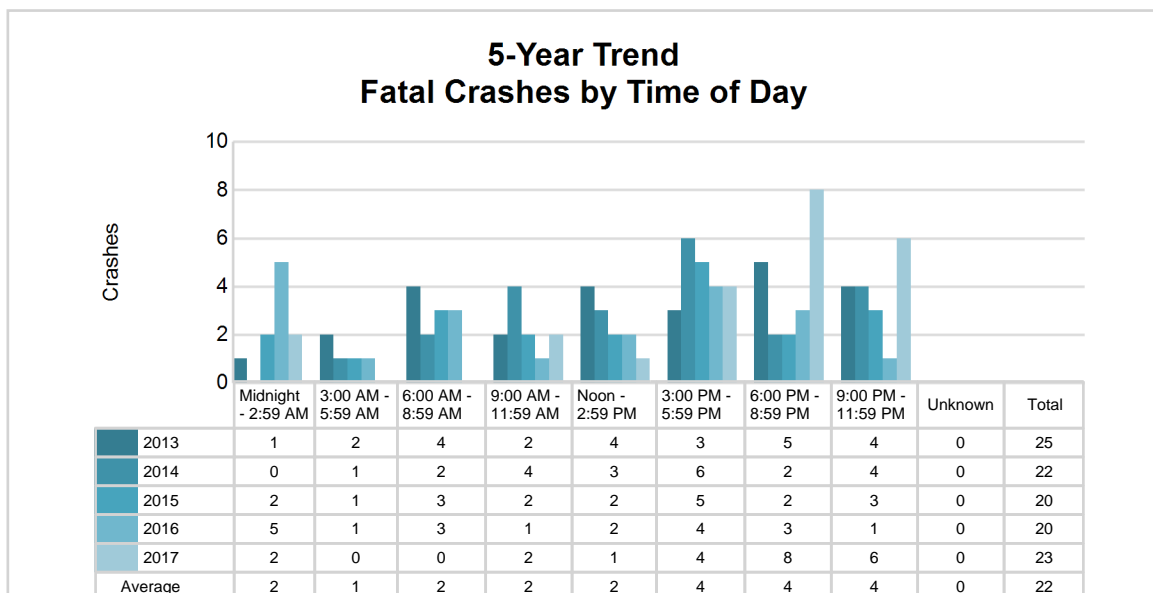
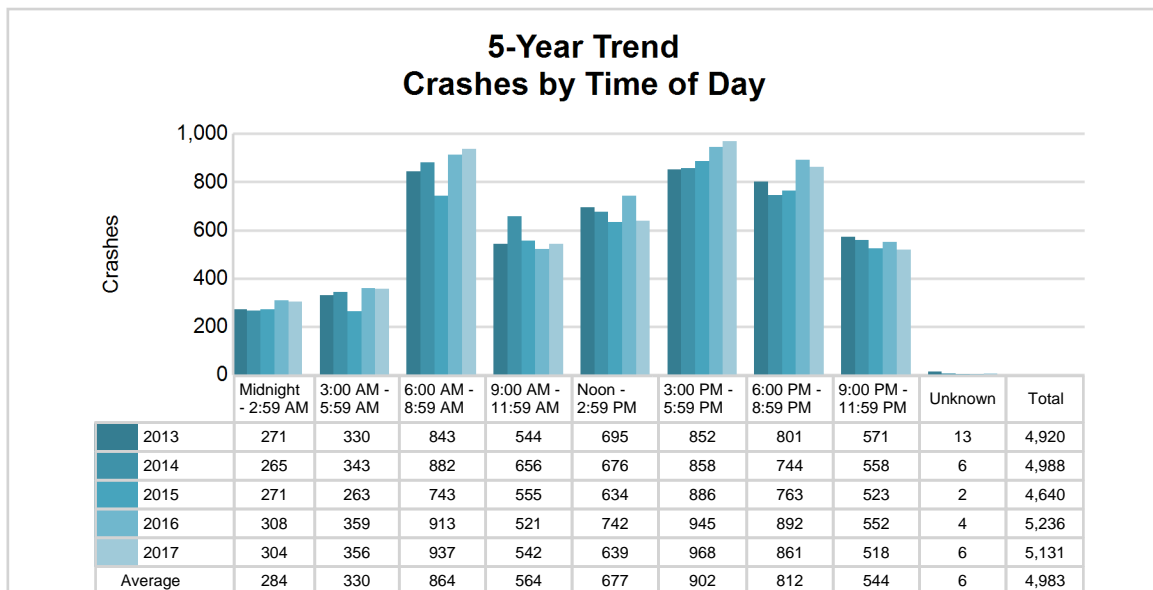


# MSP Post 52 - Wayland (continued)

## 5-Year Trend - Crashes by Time of Day

Time of Day	2013		2014		2015		2016		2017	
	Total Crashes	Fatal Crashes	Total Crashes	Fatal Crashes	Total Crashes	Fatal Crashes	Total Crashes	Fatal Crashes	Total Crashes	Fatal Crashes
Midnight - 2:59 AM	271	1	265	0	271	2	308	5	304	2
3:00 AM - 5:59 AM	330	2	343	1	263	1	359	1	356	0
6:00 AM - 8:59 AM	843	4	882	2	743	3	913	3	937	0
9:00 AM - 11:59 AM	544	2	656	4	555	2	521	1	542	2
Noon - 2:59 PM	695	4	676	3	634	2	742	2	639	1
3:00 PM - 5:59 PM	852	3	858	6	886	5	945	4	968	4
6:00 PM - 8:59 PM	801	5	744	2	763	2	892	3	861	8
9:00 PM - 11:59 PM	571	4	558	4	523	3	552	1	518	6
Unknown	13	0	6	0	2	0	4	0	6	0
<b>Total</b>	<b>4,920</b>	<b>25</b>	<b>4,988</b>	<b>22</b>	<b>4,640</b>	<b>20</b>	<b>5,236</b>	<b>20</b>	<b>5,131</b>	<b>23</b>

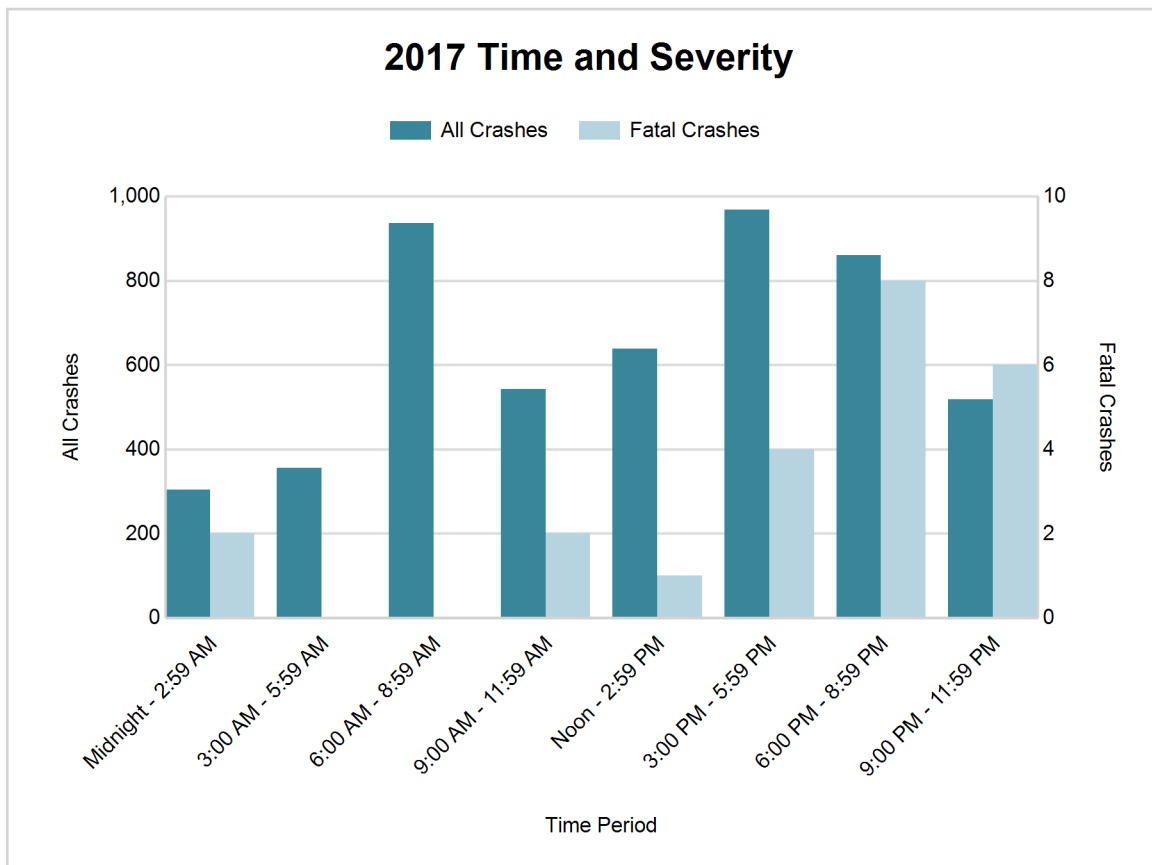
Note: † Indicates that the highest number of total crashes reported in the 5-year period occurred in the same time period



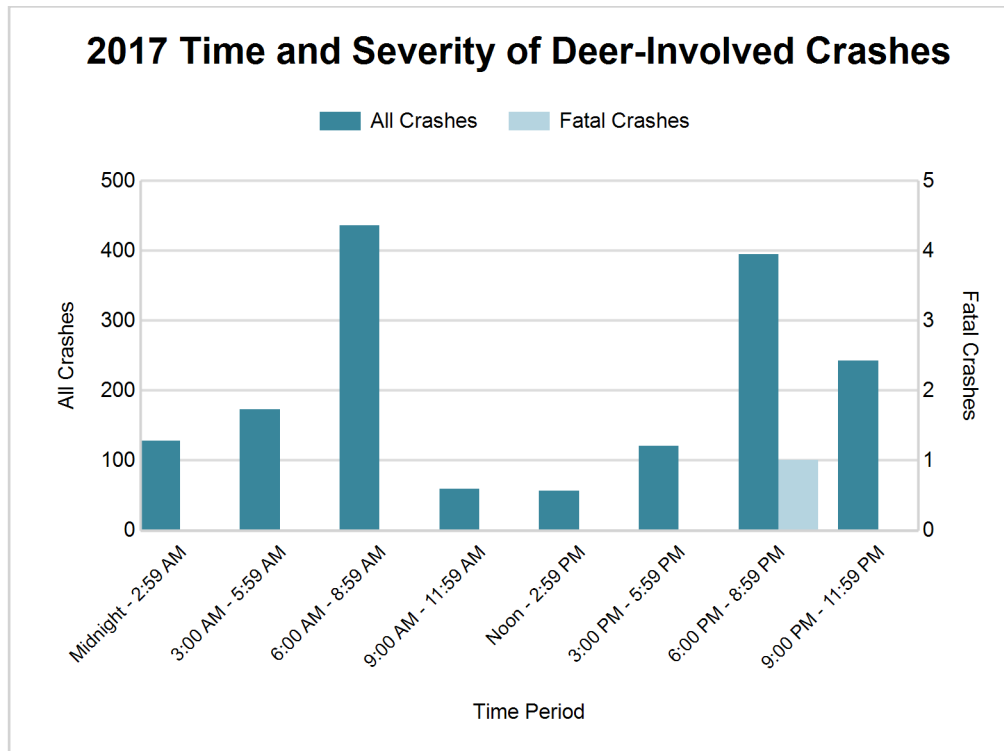


## 2017 - Time and Severity

Time of Day	All Crashes		Fatal Crashes		Injury Crashes			PDO Crashes
	Number	% of Total	Number	% of Fatal	A	B	C	Number
Midnight - 2:59 AM	304	5.9	2	8.7	10	22	22	248
3:00 AM - 5:59 AM	356	6.9	0	0.0	5	14	15	322
6:00 AM - 8:59 AM	937	18.3	0	0.0	12	29	40	856
9:00 AM - 11:59 AM	542	10.6	2	8.7	13	24	59	444
Noon - 2:59 PM	639	12.5	1	4.3	22	43	71	502
3:00 PM - 5:59 PM	968	18.9	4	17.4	28	75	103	758
6:00 PM - 8:59 PM	861	16.8	8	34.8	19	41	53	740
9:00 PM - 11:59 PM	518	10.1	6	26.1	6	30	30	446
Unknown	6	0.1	0	0.0	0	0	0	6
<b>Total</b>	<b>5,131</b>	<b>100.0</b>	<b>23</b>	<b>100.0</b>	<b>115</b>	<b>278</b>	<b>393</b>	<b>4,322</b>







#### 2017 - Reported Motor Vehicle Crashes by County

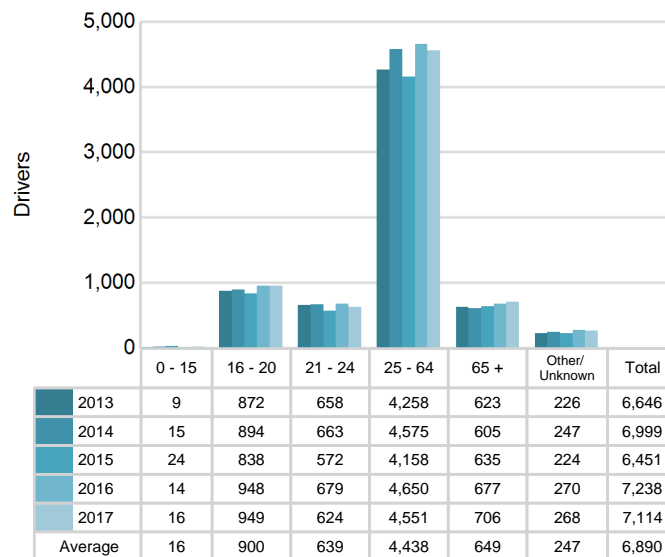
County	Crashes											Persons	
	Total	Fatal	Injury	Property Damage	Inter-state	US Route	State Route	Local Street	Alcohol-Involved	Drug-Involved	Deer-Involved	Fatalities	Injuries
Allegan	3,687	13	599	3,075	269	535	732	2,147	190	49	1,044	13	834
Barry	1,444	10	187	1,247	0	0	626	816	60	13	568	11	274
<b>Total</b>	<b>5,131</b>	<b>23</b>	<b>786</b>	<b>4,322</b>	<b>269</b>	<b>535</b>	<b>1,358</b>	<b>2,963</b>	<b>250</b>	<b>62</b>	<b>1,612</b>	<b>24</b>	<b>1,108</b>

# MSP Post 52 - Wayland (continued)

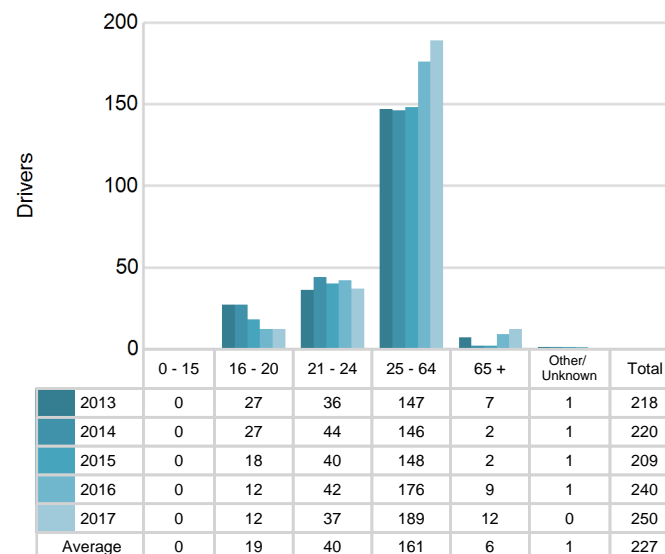
## 5-Year Trend - Drivers in Crashes Coded Drinking by Driver Age

Driver Age	2013		2014		2015		2016		2017	
	Total Drivers in Crashes	Total Drivers Coded Drinking	Total Drivers in Crashes	Total Drivers Coded Drinking	Total Drivers in Crashes	Total Drivers Coded Drinking	Total Drivers in Crashes	Total Drivers Coded Drinking	Total Drivers in Crashes	Total Drivers Coded Drinking
0 - 15	9	0	15	0	24	0	14	0	16	0
16 - 20	872	27	894	27	838	18	948	12	949	12
21 - 24	658	36	663	44	572	40	679	42	624	37
25 - 64	4,258	147	4,575	146	4,158	148	4,650	176	4,551	189
65 +	623	7	605	2	635	2	677	9	706	12
Unknown	226	1	247	1	224	1	270	1	268	0
<b>Total</b>	<b>6,646</b>	<b>218</b>	<b>6,999</b>	<b>220</b>	<b>6,451</b>	<b>209</b>	<b>7,238</b>	<b>240</b>	<b>7,114</b>	<b>250</b>

**5-Year Trend  
Total Drivers in Crashes by Age**



**5-Year Trend  
Total Drivers Coded Drinking by Age**



## 2017 - Bodily Alcohol Concentration (BAC) Results Among All Vehicle Drivers in Alcohol-Involved Crashes by Age

Age Group	Drivers				BAC Result Range for Drivers Coded Drinking				
	Total Drivers in Alcohol-Involved Crashes	Total Drivers Tested in all Crashes	Total Drivers Coded Drinking, Tested	Total Drivers Coded Drinking	BAC = 0.00	BAC 0.01 g/dL to 0.07 g/dL	BAC 0.08 g/dL to 0.16 g/dL	BAC 0.17 g/dL and Above	BAC Not Reported
0 - 15	0	0	0	0	0	0	0	0	0
16 - 20	22	22	11	12	1	3	6	0	2
21 - 24	45	41	34	37	1	7	12	7	10
25 - 64	220	195	158	189	1	22	62	33	71
65 +	15	17	11	12	0	0	7	2	3
Unknown	4	0	0	0	0	0	0	0	0
<b>Total</b>	<b>306</b>	<b>275</b>	<b>214</b>	<b>250</b>	<b>3</b>	<b>32</b>	<b>87</b>	<b>42</b>	<b>86</b>

Notes: BAC measured in grams (g) per deciliter (dL).

BAC may not be reported if drivers are not tested or if the results are not available immediately (as in the case of a blood test).

A driver may be coded by the officer as drinking even though no test is administered.

## Alcohol-Involved Crashes

In 2017, there were 306 drivers in alcohol-involved crashes; 250 (81.7%) of those drivers were coded as had-been-drinking by the officer on the crash form.

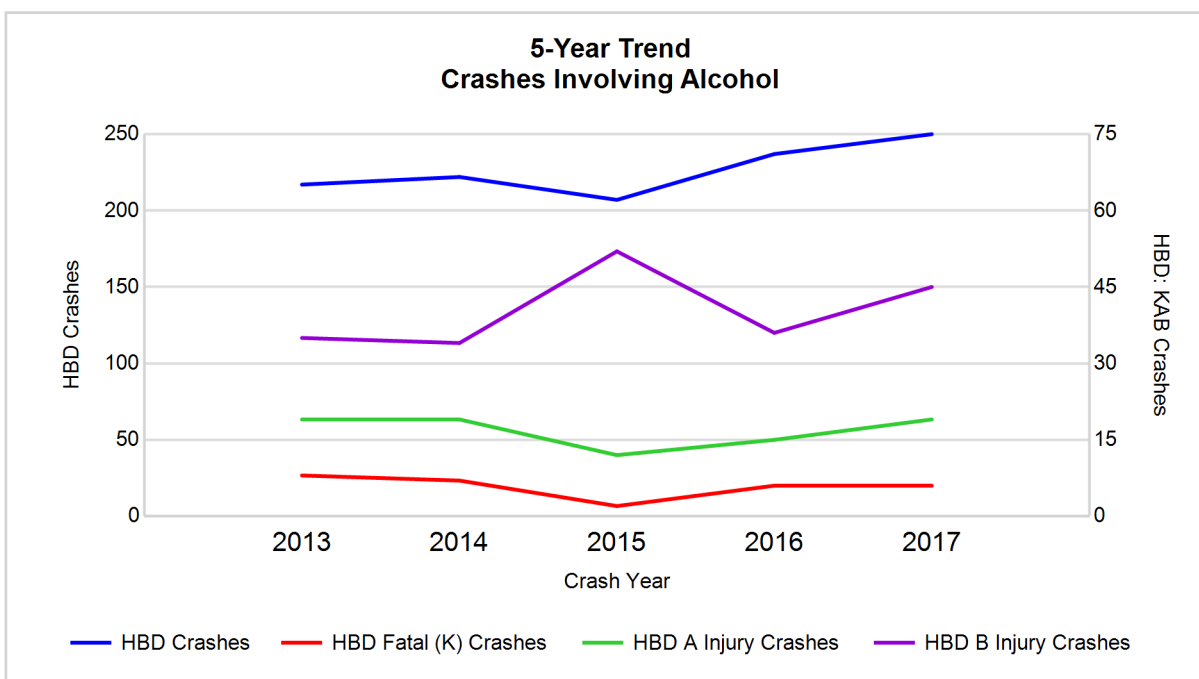
- 129 (51.6%) of the 250 drivers had a blood alcohol concentration (BAC) of 0.08 g/dL (grams per deciliter) or greater, and 42 (32.6%) of the 129 drivers had a BAC at or above 0.17 g/dL.
- 214 (85.6%) of the 250 drivers were coded as had-been-drinking and were tested for alcohol consumption.

## 5-Year Trend - Crashes Involving Alcohol

Year	All Crashes	HBD Crashes	% HBD	Fatal Crashes	HBD Fatal Crashes	% HBD	A Injury Crashes	HBD A Injury Crashes	% HBD	B Injury Crashes	HBD B Injury Crashes	% HBD
2013	4,920	217	4.4	25	8	32.0	99	19	19.2	259	35	13.5
2014	4,988	222	4.5	22	7	31.8	98	19	19.4	253	34	13.4
2015	4,640	207	4.5	20	2	10.0	84	12	14.3	250	52	20.8
2016	5,236	237	4.5	20	6	30.0	122	15	12.3	304	36	11.8
2017	5,131	250**	4.9**	23	6	26.1	115	19	16.5	278	45	16.2

Note: \* Indicates that the most recent year is the lowest number or percentage reported in the 5-year period in that column

\*\* Indicates that the most recent year is the highest number or percentage reported in the 5-year period in that column



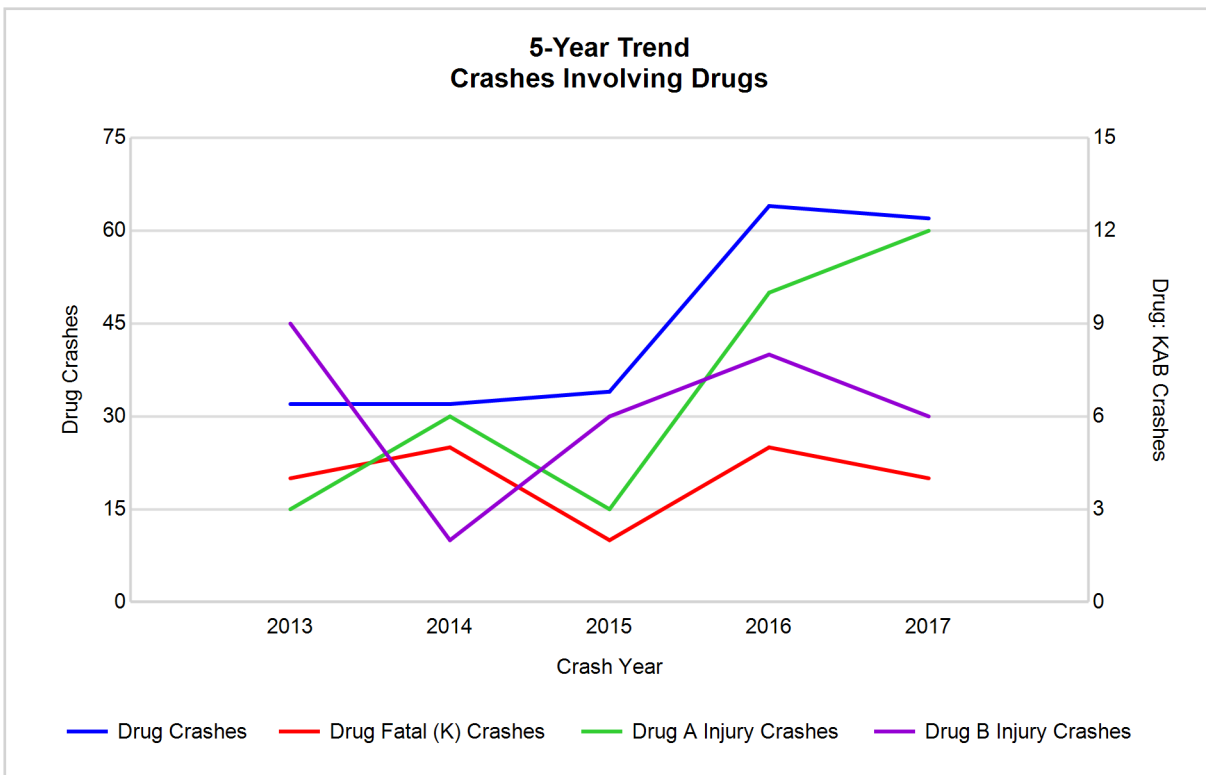
Note: Had-Been-Drinking (HBD)

## 5-Year Trend - Crashes Involving Drugs

Year	All Crashes	Drug Crashes	% Drug	Fatal Crashes	Drug Fatal Crashes	% Drug	A Injury Crashes	Drug A Injury Crashes	% Drug	B Injury Crashes	Drug B Injury Crashes	% Drug
2013	4,920	32	0.7	25	4	16.0	99	3	3.0	259	9	3.5
2014	4,988	32	0.6	22	5	22.7	98	6	6.1	253	2	0.8
2015	4,640	34	0.7	20	2	10.0	84	3	3.6	250	6	2.4
2016	5,236	64	1.2	20	5	25.0	122	10	8.2	304	8	2.6
2017	5,131	62	1.2	23	4	17.4	115	12**	10.4**	278	6	2.2

Note: \* Indicates that the most recent year is the lowest number or percentage reported in the 5-year period in that column

\*\* Indicates that the most recent year is the highest number or percentage reported in the 5-year period in that column

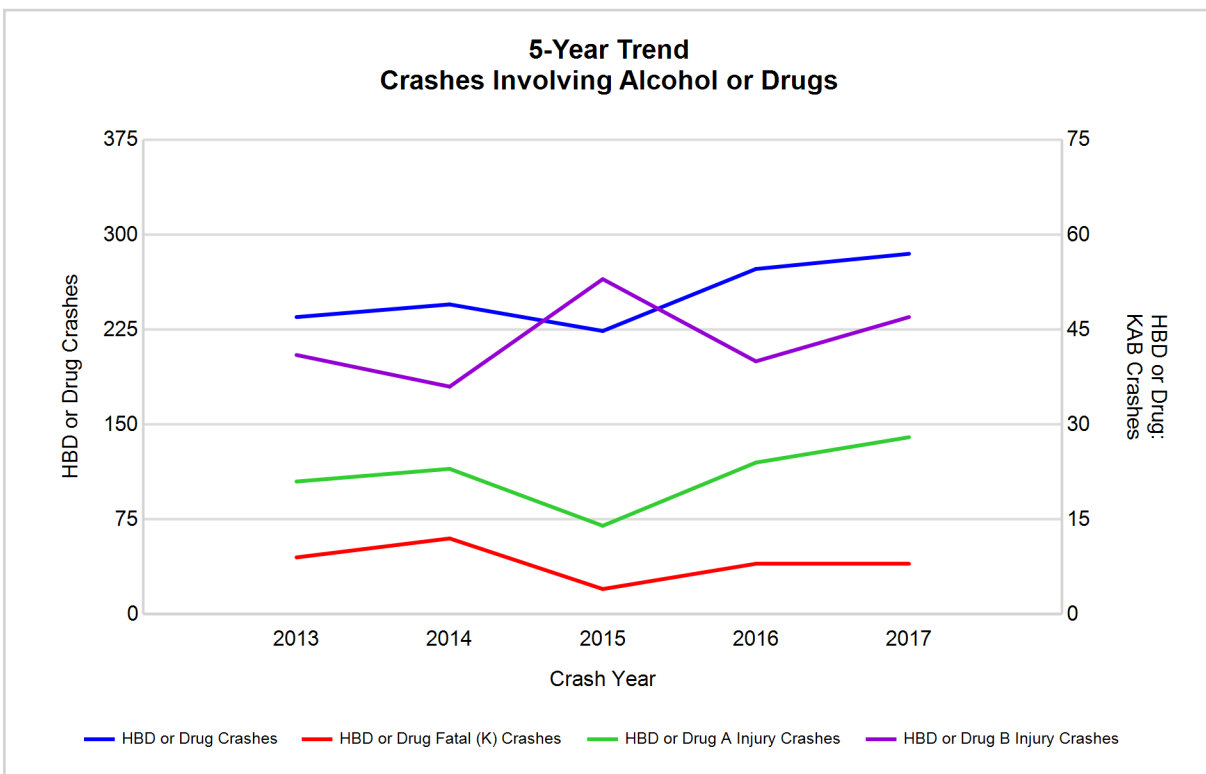


## 5-Year Trend - Crashes Involving Alcohol or Drugs

Year	All Crashes	HBD or Drug Crashes	% HBD or Drug	Fatal Crashes	HBD or Drug Fatal Crashes	% HBD or Drug	A Injury Crashes	HBD or Drug A Injury Crashes	% HBD or Drug	B Injury Crashes	HBD or Drug B Injury Crashes	% HBD or Drug
2013	4,920	235	4.8	25	9	36.0	99	21	21.2	259	41	15.8
2014	4,988	245	4.9	22	12	54.5	98	23	23.5	253	36	14.2
2015	4,640	224	4.8	20	4	20.0	84	14	16.7	250	53	21.2
2016	5,236	273	5.2	20	8	40.0	122	24	19.7	304	40	13.2
2017	5,131	285**	5.6**	23	8	34.8	115	28**	24.3**	278	47	16.9

Note: \* Indicates that the most recent year is the lowest number or percentage reported in the 5-year period in that column

\*\* Indicates that the most recent year is the highest number or percentage reported in the 5-year period in that column



Note: Had-Been-Drinking (HBD)

## 2017 - Restraints Worn Among Vehicle Drivers and Injured Passengers by Vehicle Type

Vehicle Type	Total Occupants			Fatalities			A - Suspected Serious			B - Suspected Minor			C - Possible Injury			No Injury		
	Total	Used Restraint	%	Total	Used Restraint	%	Total	Used Restraint	%	Total	Used Restraint	%	Total	Used Restraint	%	Total	Used Restraint	%
Passenger car, SUV, van	5,743	5,464	95.1	6	1	16.7	88	77	87.5	262	244	93.1	499	485	97.2	4,725	4,640	98.2
Motor home	21	18	85.7	0	0	0.0	1	1	100.0	2	1	50.0	2	2	100.0	15	14	93.3
Pickup truck	1,104	1,035	93.8	5	3	60.0	11	5	45.5	49	42	85.7	73	66	90.4	929	912	98.2
Small truck under 10,000 lbs. GVWR	50	46	92.0	0	0	0.0	0	0	0.0	1	0	0.0	2	2	100.0	45	44	97.8
Motorcycle	84	43	51.2	6	3	50.0	25	14	56.0	23	12	52.2	10	5	50.0	17	9	52.9
Moped / goped	4	0	0.0	0	0	0.0	1	0	0.0	2	0	0.0	1	0	0.0	0	0	0.0
Go-cart / golf cart	0	0	0.0	0	0	0.0	0	0	0.0	0	0	0.0	0	0	0.0	0	0	0.0
Snowmobile	0	0	0.0	0	0	0.0	0	0	0.0	0	0	0.0	0	0	0.0	0	0	0.0
Off-Road Vehicle - ORV / All-Terrain Vehicle - ATV	11	2	18.2	0	0	0.0	2	0	0.0	4	0	0.0	1	1	100.0	4	1	25.0
Other	39	23	59.0	0	0	0.0	1	1	100.0	0	0	0.0	0	0	0.0	34	22	64.7
Truck/bus over 10,000 lbs.	219	208	95.0	0	0	0.0	0	0	0.0	0	0	0.0	6	5	83.3	207	203	98.1
Unknown	137	63	46.0	0	0	0.0	1	1	100.0	2	2	100.0	6	5	83.3	54	54	100.0
<b>Total</b>	<b>7,412</b>	<b>6,902</b>	<b>93.1</b>	<b>17</b>	<b>7</b>	<b>41.2</b>	<b>130</b>	<b>99</b>	<b>76.2</b>	<b>345</b>	<b>301</b>	<b>87.2</b>	<b>600</b>	<b>571</b>	<b>95.2</b>	<b>6,030</b>	<b>5,899</b>	<b>97.8</b>

Note: Restraint Use includes shoulder belt only used, lap belt only used, both lap and shoulder belts used, child restraint used, restraint failure, and helmet worn.

## 2017 - Restraints Worn Among Vehicle Drivers and Injured Passengers by Age

Age Group	Total Occupants			Fatalities			A - Suspected Serious			B - Suspected Minor			C - Possible Injury			No Injury		
	Total	Used Restraint	%	Total	Used Restraint	%	Total	Used Restraint	%	Total	Used Restraint	%	Total	Used Restraint	%	Total	Used Restraint	%
0 - 15	101	86	85.1	1	0	0.0	8	7	87.5	22	18	81.8	59	53	89.8	11	8	72.7
16 - 20	1,002	974	97.2	2	1	50.0	12	8	66.7	70	60	85.7	82	79	96.3	832	823	98.9
21 - 24	653	633	96.9	0	0	0.0	9	8	88.9	41	35	85.4	62	60	96.8	537	527	98.1
25 - 64	4,653	4,486	96.4	11	4	36.4	84	59	70.2	173	150	86.7	341	325	95.3	4,022	3,931	97.7
65 +	733	723	98.6	3	2	66.7	17	17	100.0	39	38	97.4	54	54	100.0	617	610	98.9
Unknown	270	0	0.0	0	0	0.0	0	0	0.0	0	0	0.0	2	0	0.0	11	0	0.0
<b>Total</b>	<b>7,412</b>	<b>6,902</b>	<b>93.1</b>	<b>17</b>	<b>7</b>	<b>41.2</b>	<b>130</b>	<b>99</b>	<b>76.2</b>	<b>345</b>	<b>301</b>	<b>87.2</b>	<b>600</b>	<b>571</b>	<b>95.2</b>	<b>6,030</b>	<b>5,899</b>	<b>97.8</b>

Note: Restraint Use includes shoulder belt only used, lap belt only used, both lap and shoulder belts used, child restraint used, restraint failure, and helmet worn.



## 5-Year Trend - Restraint Use Among Drivers

Restraint Use	2013			2014			2015			2016			2017		
	Drivers	Fatal Drivers	Injured Drivers	Drivers	Fatal Drivers	Injured Drivers	Drivers	Fatal Drivers	Injured Drivers	Drivers	Fatal Drivers	Injured Drivers	Drivers	Fatal Drivers	Injured Drivers
No belts available	34	0	4	51	1	8	56	0	11	25	0	2	18	0	3
Shoulder belt only used	2	0	0	0	0	0	78	0	5	120	0	5	32	0	7
Lap belt only used	10	0	0	25	0	2	15	0	1	19	0	2	16	0	1
Both lap & shoulder belts used	6,117	7	597	6,433	14	650	5,858	10	587	6,560	5	670	6,551	3	680
No belts used	57	3	27	52	5	28	45	4	15	49	4	27	48	4	19
Child restraint used	0	0	0	1	0	1	0	0	0	2	0	0	3	0	0
Child restraint not used, unavailable or improper use	1	0	1	0	0	0	0	0	0	0	0	0	0	0	0
Restraint failure	3	0	1	0	0	0	1	0	1	1	1	0	3	0	0
Restraint use unknown	124	1	11	126	0	25	100	0	15	238	3	20	308	0	21
Helmet worn	47	3	27	34	2	28	41	0	29	48	0	34	41	2	29
Helmet not worn	18	1	16	20	0	16	26	0	20	31	2	24	29	2	20
Helmet use unknown	4	1	1	11	0	6	7	1	2	8	1	4	7	0	3
Uncoded & errors	229	0	5	246	0	2	224	0	3	137	0	0	58	0	0
<b>Total</b>	<b>6,646</b>	<b>16</b>	<b>690</b>	<b>6,999</b>	<b>22</b>	<b>766</b>	<b>6,451</b>	<b>15</b>	<b>689</b>	<b>7,238</b>	<b>16</b>	<b>788</b>	<b>7,114</b>	<b>11</b>	<b>783</b>

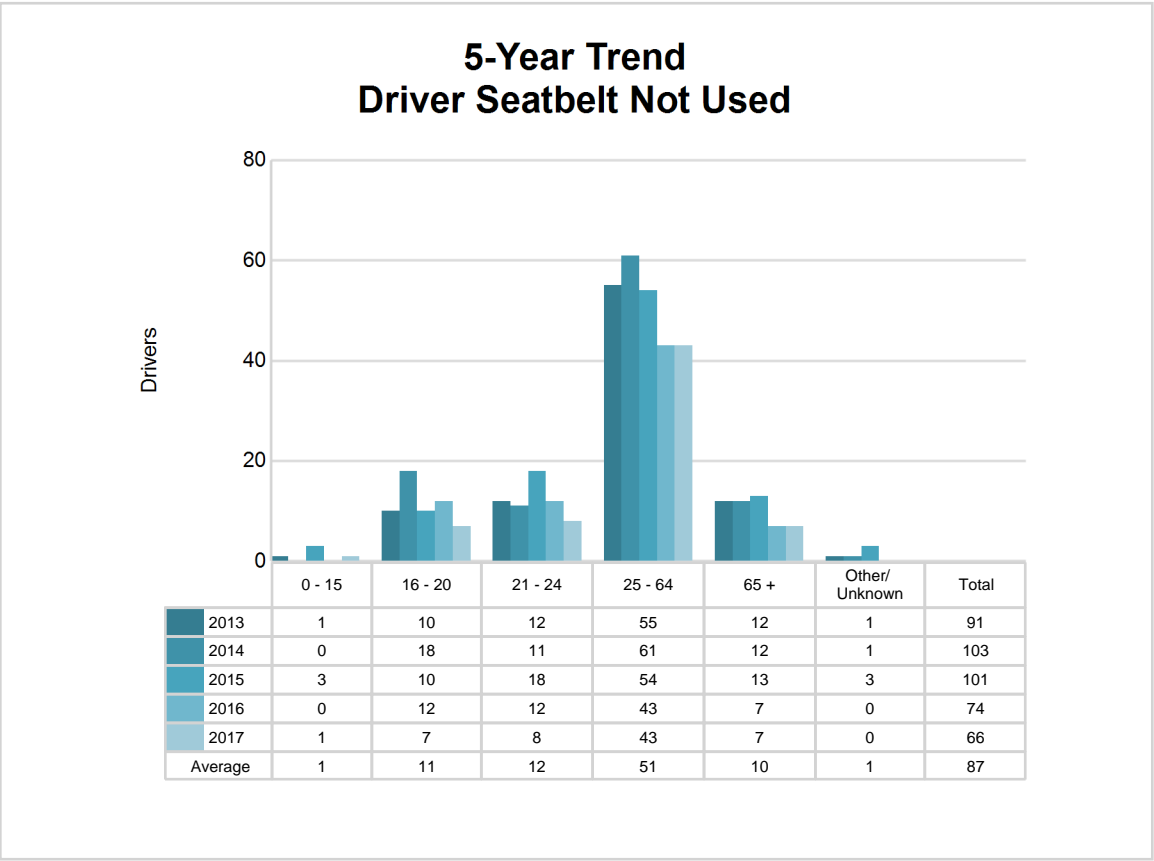
## 5-Year Trend - Restraint Use Among Drivers Coded Drinking

Restraint Use	2013			2014			2015			2016			2017		
	Drivers	Fatal Drivers	Injured Drivers	Drivers	Fatal Drivers	Injured Drivers	Drivers	Fatal Drivers	Injured Drivers	Drivers	Fatal Drivers	Injured Drivers	Drivers	Fatal Drivers	Injured Drivers
No belts available	1	0	0	4	0	2	0	0	0	1	0	0	3	0	2
Shoulder belt only used	0	0	0	0	0	0	5	0	1	7	0	0	0	0	0
Lap belt only used	0	0	0	1	0	1	0	0	0	0	0	0	2	0	0
Both lap & shoulder belts used	167	2	50	172	3	47	152	0	55	180	1	51	190	0	55
No belts used	16	1	9	11	1	9	12	0	7	11	2	8	16	3	9
Child restraint used	0	0	0	0	0	0	0	0	0	0	0	0	0	0	0
Child restraint not used, unavailable or improper use	1	0	1	0	0	0	0	0	0	0	0	0	0	0	0
Restraint failure	0	0	0	0	0	0	0	0	0	1	1	0	0	0	0
Restraint use unknown	29	1	4	24	0	7	29	0	6	31	0	9	30	0	12
Helmet worn	2	0	2	1	0	1	1	0	1	3	0	1	1	0	0
Helmet not worn	2	0	2	2	0	2	6	0	5	5	1	4	8	1	6
Helmet use unknown	0	0	0	4	0	3	3	1	1	1	0	1	0	0	0
Uncoded & errors	0	0	0	1	0	1	1	0	0	0	0	0	0	0	0
<b>Total</b>	<b>218</b>	<b>4</b>	<b>68</b>	<b>220</b>	<b>4</b>	<b>73</b>	<b>209</b>	<b>1</b>	<b>76</b>	<b>240</b>	<b>5</b>	<b>74</b>	<b>250</b>	<b>4</b>	<b>84</b>

5-Year Trend - Seatbelt Not Used Among Drivers by Age

Age Group	2013			2014			2015			2016			2017		
	Drivers	Fatal Drivers	Injured Drivers	Drivers	Fatal Drivers	Injured Drivers	Drivers	Fatal Drivers	Injured Drivers	Drivers	Fatal Drivers	Injured Drivers	Drivers	Fatal Drivers	Injured Drivers
0 - 15	1	0	1	0	0	0	3	0	1	0	0	0	1	0	1
16 - 20	10	0	6	18	1	6	10	0	4	12	2	5	7	0	2
21 - 24	12	0	6	11	0	4	18	0	2	12	0	5	8	0	4
25 - 64	55	2	18	61	3	22	54	3	16	43	1	17	43	3	15
65 +	12	1	0	12	2	4	13	1	3	7	1	2	7	1	0
Unknown	1	0	0	1	0	0	3	0	0	0	0	0	0	0	0
Total	91	3	31	103	6	36	101	4	26	74	4	29	66	4	22

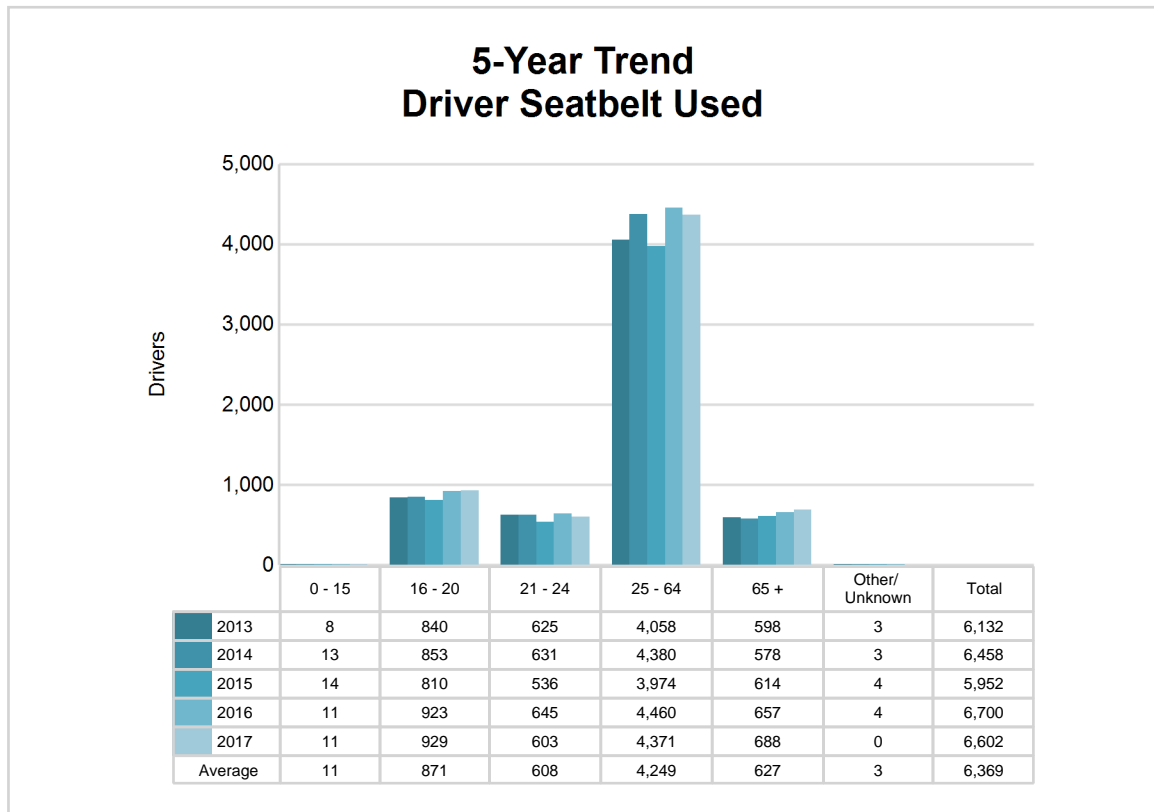
Note: Seatbelt Not Used includes no belts available or no belts used.



## 5-Year Trend - Seatbelt Used Among Drivers by Age

Age Group	2013			2014			2015			2016			2017		
	Drivers	Fatal Drivers	Injured Drivers	Drivers	Fatal Drivers	Injured Drivers	Drivers	Fatal Drivers	Injured Drivers	Drivers	Fatal Drivers	Injured Drivers	Drivers	Fatal Drivers	Injured Drivers
0 - 15	8	0	0	13	0	1	14	0	2	11	0	2	11	0	4
16 - 20	840	0	126	853	0	104	810	2	96	923	1	95	929	1	102
21 - 24	625	1	59	631	3	81	536	2	59	645	1	66	603	0	74
25 - 64	4,058	5	364	4,380	6	401	3,974	5	374	4,460	4	440	4,371	2	430
65 +	598	1	49	578	5	65	614	1	63	657	0	74	688	0	78
Unknown	3	0	0	3	0	0	4	0	0	4	0	0	0	0	0
<b>Total</b>	<b>6,132</b>	<b>7</b>	<b>598</b>	<b>6,458</b>	<b>14</b>	<b>652</b>	<b>5,952</b>	<b>10</b>	<b>594</b>	<b>6,700</b>	<b>6</b>	<b>677</b>	<b>6,602</b>	<b>3</b>	<b>688</b>

Note: Seatbelt Used includes shoulder belt only used, lap belt only used, both lap and shoulder belts used, and restraint failure.



## 5-Year Trend - Drivers in Crashes by Hazardous Action

Hazardous Action	2013		2014		2015		2016		2017	
	Total Drivers in Crashes	Drivers in Fatal Crashes	Total Drivers in Crashes	Drivers in Fatal Crashes	Total Drivers in Crashes	Drivers in Fatal Crashes	Total Drivers in Crashes	Drivers in Fatal Crashes	Total Drivers in Crashes	Drivers in Fatal Crashes
None	3,451	14	3,672	18	3,556	12	3,793	11	3,899	13
Speed too fast	985	2	904	1	728	5	1,015	3	772	3
Speed too slow	7	0	5	0	7	0	8	0	5	0
Failed to yield	438	2	517	5	467	3	510	1	506	2
Disregard traffic control	67	2	80	0	70	1	82	1	82	2
Drove wrong way	4	1	3	1	2	0	0	0	2	0
Drove left of center	48	1	75	5	51	1	55	1	56	1
Improper passing	39	0	36	0	46	0	43	0	39	0
Improper lane use	54	0	45	0	54	0	59	0	58	0
Improper turn	41	0	45	0	37	0	41	0	48	0
Improper/no signal	9	0	15	1	21	0	12	0	12	0
Improper backing	77	0	105	0	77	0	93	0	94	0
Unable to stop in assured clear distance	548	1	626	0	586	0	692	0	685	1
Other	386	2	404	4	307	5	333	4	336	4
Unknown	107	5	81	1	96	3	159	3	175	1
Reckless driving	37	2	40	1	49	0	48	4	50	2
Careless/negligent driving	231	6	230	2	259	2	253	1	265	2
Uncoded & errors	117	1	116	0	38	0	42	0	30	1
<b>Total</b>	<b>6,646</b>	<b>39</b>	<b>6,999</b>	<b>39</b>	<b>6,451</b>	<b>32</b>	<b>7,238</b>	<b>29</b>	<b>7,114</b>	<b>32</b>

In 2017, there were 250 alcohol-involved crashes in Post 52:

### Office of Highway Safety Planning

---

Physical Address:  
7150 Harris Drive  
Dimondale, Michigan 48821

Mailing Address:  
P.O. Box 30634  
Lansing, Michigan 48909

Phone: (517) 284-3112  
Fax: (517) 284-3151

Find us on the web:  
[MichiganTrafficCrashFacts.org](http://MichiganTrafficCrashFacts.org)

