



2017

MTCF
Michigan Traffic
Crash Facts

Michigan Traffic Crash Facts

Reporting Criteria

Please pay particular attention to the wording when interpreting the three levels of data gathered for this report.

Crash

The Crash Level analyzes data related to crash events and returns one result per crash.

Examples: Time, weather, and location.

Units

The Units Level analyzes the experience of the units in the crash and returns one result per vehicle, driver, pedestrian, bicyclist, or train.

Examples: Vehicle type, driver condition, and unit events.

People

The People Level analyzes the experience of the people involved in the crash and returns one result per occupant/person/party.

Examples: Age, injury severity, and seat belt or helmet use.

KABCO Injury Indicator:

K = Killed

A = Suspected Serious Injury

B = Suspected Minor Injury

C = Possible Injury

O = No Injury

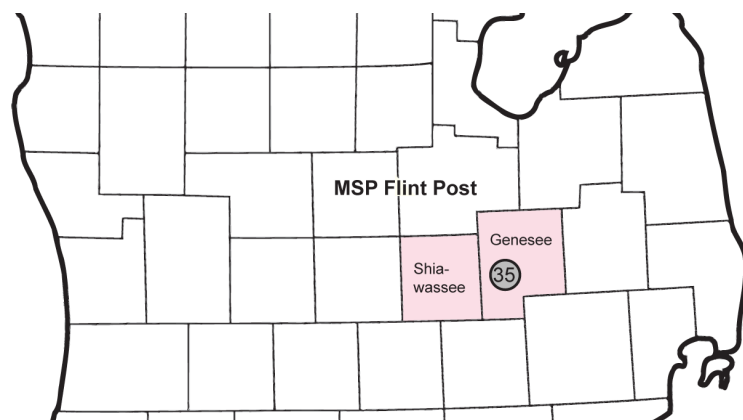
Property Damage Only (PDO)



Michigan State Police (MSP) Post 35 - Flint

2017 Traffic Crash Data & 2013-2017 5-Year Trends

Post 35 is comprised of Genesee and Shiawassee counties. Trend tables for this report are based on those counties.



Sources:

The crashes in this report occurred on public roadways in Michigan and resulted in injuries, fatalities, or property damage (with \$1,000 as a reporting threshold). The information was gathered from Michigan Traffic Crash Report Forms (UD-10) submitted by local police departments, sheriff's offices, and the Michigan State Police. Other related information was obtained from the departments of Transportation, State, and Community Health.

This page left intentionally blank

MSP Post 35 - Flint

- There were 12,876 crashes in Post 35 during 2017. [Page 1]
- A total of 45 fatalities resulted from 44 fatal crashes in 2017 in Post 35. [Page 1]
- There were 3,918 injuries and 2,804 injury crashes. [Page 1]
- There were 10,028 property damage only crashes (no fatalities or injuries). [Page 1]
- December had the highest number of crashes (1,750). [Pages 1-2]
- July had the highest number of fatal crashes (8) and fatalities (8). [Pages 1-2]
- December had the highest number of injury crashes (285) while October had the highest number of injuries (368). [Page 1]
- December had the highest number of property damage only crashes (1,463). [Page 1]
- Of all vehicles involved in fatal crashes, 5 (8.1%) were motorcycles. [Page 1]
- Friday was the day of the week with the highest number of crashes (2,179) and Monday had the highest number of fatal crashes (8). [Pages 2-3]
- The 3:00 PM - 5:59 PM time period had the highest number of crashes (2,725). This holds true for every year between 2013 and 2017. The Midnight - 2:59 AM time period had the highest number of fatal crashes (10). [Pages 5-6]
- During the period from 2013 to 2017, the highest number of deer crashes occurred in 2017 (1,926). The 6:00 PM - 8:59 PM time period consistently had the highest number of deer-involved crashes during the five-year period. There were fatal crashes involving deer in 2017. [Pages 7-8]
- Genesee County (83.6%) had the highest number of crashes in Post 35 in 2017, followed by Shiawassee County (16.4%), and (0.0%). [Page 8]
- Genesee County (86.7%) had the highest number of fatalities in Post 35 in 2017, followed by Shiawassee County (13.3%), and (0.0%). [Page 8]
- The highest number of drivers in crashes (21,636) occurred during 2017 and the highest number of drivers coded drinking in crashes (461) occurred during 2013 within the five year period between 2013 and 2017. [Page 9]
- A total of 401 crashes involved alcohol in 2017. [Page 10]
- Alcohol-involved fatal crashes were the highest in 2016 during the five-year period from 2013 to 2017 at 19. [Page 10]
- A total of 111 crashes, 8 fatal crashes, and 12 suspected serious injury crashes involved drugs in 2017. [Page 11]
- There were 19,057 drivers wearing seatbelts and 177 drivers not wearing seatbelts in crashes in 2017. Of the 177 drivers not wearing seat belts, 8 (4.5%) were killed and 74 (41.8%) were injured. [Pages 14-16]
- The most common hazardous action coded for drivers in 2017 in all crashes was unable to stop in assured clear distance (2,644), while the most common hazardous action coded for drivers in fatal crashes was speed too fast (7). [Page 17]

MSP Post 35 - Flint (continued)

Post 35 Experience

In 2017:

There were 21,636 drivers involved in 12,876 motor vehicle crashes in MSP Post 35. Of those crashes, 44 were classified as fatal, resulting in 45 fatalities. An additional 3,918 persons were injured.

Post 35 experienced the highest number of motor vehicle crashes (1,750) in December, the highest number of fatal crashes (8) and the highest number of persons killed (8) in July.

Michigan driver statistics indicate 6.5 percent of licensed drivers in Post 35 were age 16-20, and 11.4 percent of drivers in crashes were also in that age group.

2017 - Crashes and Injuries by Month

Month	Crashes				Persons	
	Total	Fatal	Injury	Property Damage Only (PDO)	Fatalities	Injuries
January	1,107	7	224	876	7	298
February	811	2	182	627	2	275
March	1,101	4	221	876	4	320
April	880	1	217	662	1	292
May	1,012	3	237	772	3	334
June	1,020	6	249	765	6	363
July	847	8	235	604	8	345
August	892	3	245	644	4	331
September	953	3	216	734	3	291
October	1,293	1	255	1,037	1	368
November	1,210	4	238	968	4	339
December	1,750	2	285	1,463	2	362
Total	12,876	44	2,804	10,028	45	3,918

2017 - Driver Statistics

Age Group	Post 35			Driver Rates	
	2017 Population	Licensed Drivers	Drivers in Crashes	Per 10k Population	Per 10k Licensed
0 - 15	93,871	2,202	23	2.5	104.5
16 - 20	30,177	22,231	2,474	819.8	1,112.9
21 - 24	24,478	21,849	2,181	891.0	998.2
25 - 64	245,720	224,610	12,774	519.9	568.7
65 +	81,585	72,693	2,375	291.1	326.7
Unknown	0	0	1,809	--	--
Total	475,831	343,585	21,636	454.7	629.7

2017 - Vehicles in Crashes

Vehicle Type	Motor Vehicles		Fatal Crashes		Injury Crashes	PDO Crashes
	Number of Vehicles	% of Total	Number	% of Total	Number	Number
Passenger car, SUV, van	17,560	81.2	44	69.8	4,232	13,284
Motor home	27	0.1	0	0.0	5	22
Pickup truck	2,878	13.3	6	9.5	638	2,234
Small truck under 10,000 lbs. GVWR	118	0.5	2	3.2	20	96
Motorcycle	125	0.6	5	7.9	91	29
Moped / goped	12	0.1	0	0.0	8	4
Go-cart / golf cart	4	0.0	0	0.0	0	4
Snowmobile	2	0.0	0	0.0	1	1
Off-Road Vehicle - ORV / All-Terrain Vehicle - ATV	9	0.0	0	0.0	9	0
Other	87	0.4	0	0.0	20	67
Truck/bus over 10,000 lbs.	470	2.2	5	7.9	124	341
Unknown	344	1.6	1	1.6	36	307
Total	21,636	100.0	63	100.0	5,184	16,389

5-Year Trend - Crashes by Month

Month	2013		2014		2015		2016		2017	
	Total Crashes	Fatal Crashes	Total Crashes	Fatal Crashes	Total Crashes	Fatal Crashes	Total Crashes	Fatal Crashes	Total Crashes	Fatal Crashes
January	1,190	4	1,640	2	1,359	3	1,171	3	1,107	7
February	1,020	2	1,078	3	1,079	0	1,156	3	811	2
March	820	1	1,029	3	846	1	940	4	1,101	4
April	783	2	749	0	773	3	959	2	880	1
May	893	3	882	3	962	2	868	4	1,012	3
June	874	0	866	5	949	5	858	5	1,020	6
July	784	2	717	5	763	3	861	5	847	8
August	740	2	789	3	807	1	889	6	892	3
September	855	4	815	3	887	8	978	6	953	3
October	1,077	5	1,143	1	1,174	5	1,105	12	1,293	1
November	1,236	4	1,402	2	1,381	2	1,250	4	1,210	4
December	1,437	3	998	3	1,152	3	1,313	8	1,750	2
Total	11,709	32	12,108	33	12,132	36	12,348	62	12,876	44

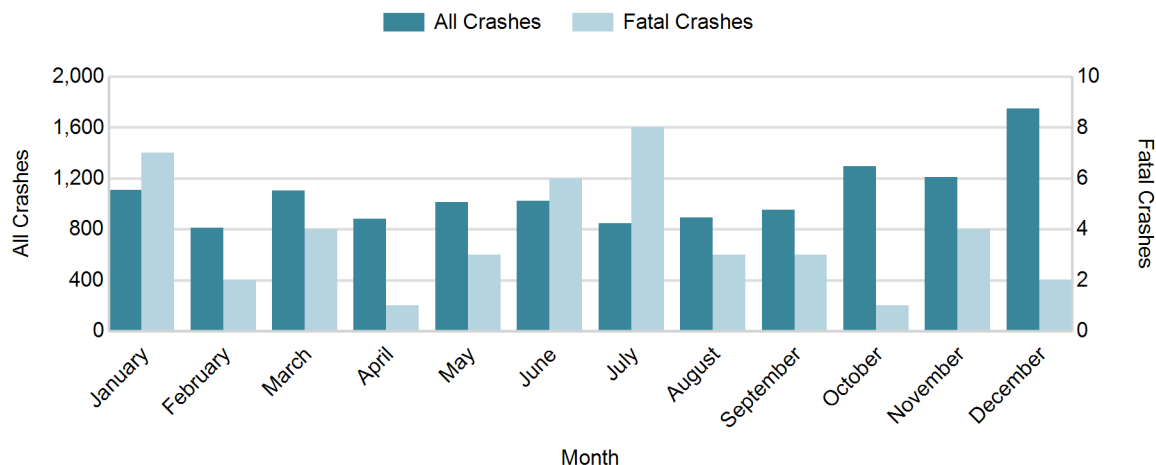
Note: † Indicates that the highest number of total crashes reported in the 5-year period occurred in the same month

5-Year Trend - Crashes by Day of Week

Day	2013		2014		2015		2016		2017	
	Total Crashes	Fatal Crashes	Total Crashes	Fatal Crashes	Total Crashes	Fatal Crashes	Total Crashes	Fatal Crashes	Total Crashes	Fatal Crashes
Monday	1,717	6	1,642	1	1,713	6	1,736	6	1,784	8
Tuesday	1,686	1	1,901	4	1,856	4	1,888	6	1,947	7
Wednesday	1,788	4	1,915	4	1,803	3	1,961	10	1,877	5
Thursday	1,870	6	2,221	5	1,818	2	1,821	8	2,002	6
Friday	1,846	5	1,872	2	1,969	9	1,990	10	2,179	7
Saturday	1,550	8	1,364	10	1,733	8	1,589	12	1,743	7
Sunday	1,252	2	1,193	7	1,240	4	1,363	10	1,344	4
Total	11,709	32	12,108	33	12,132	36	12,348	62	12,876	44

Note: † Indicates that the highest number of total crashes reported in the 5-year period occurred on the same day of the week

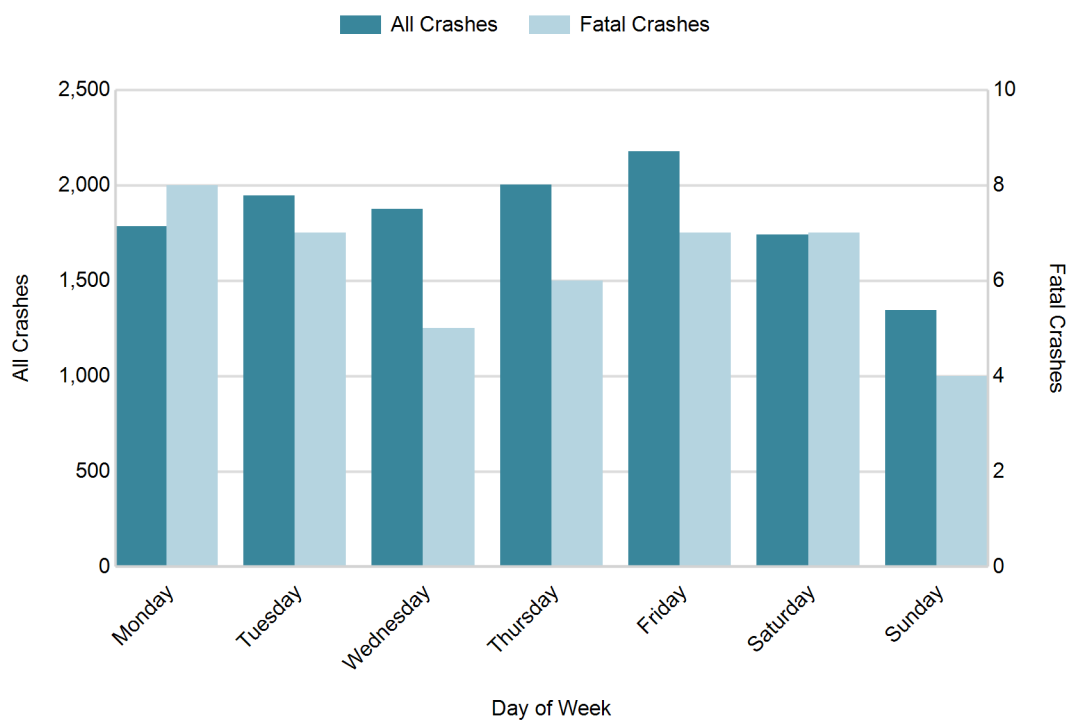
2017 Crashes by Month



2017 - Crashes by Day of Week

Day	All Crashes		Fatal Crashes		Injury Crashes			PDO Crashes
	Number	% of Total	Number	% of Fatal	A	B	C	Number
Monday	1,784	13.9	8	18.2	27	82	282	1,385
Tuesday	1,947	15.1	7	15.9	21	92	293	1,534
Wednesday	1,877	14.6	5	11.4	36	89	275	1,472
Thursday	2,002	15.5	6	13.6	28	97	320	1,551
Friday	2,179	16.9	7	15.9	24	101	353	1,694
Saturday	1,743	13.5	7	15.9	32	99	243	1,362
Sunday	1,344	10.4	4	9.1	29	81	200	1,030
Total	12,876	100.0	44	100.0	197	641	1,966	10,028

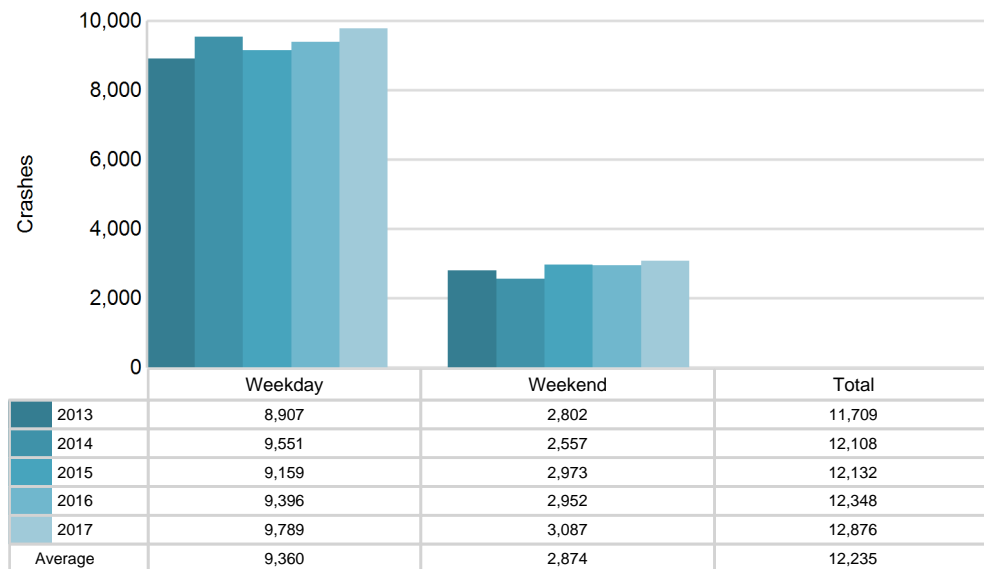
2017 Day of Week and Severity



5-Year Trend - Crashes by Weekday and Weekend

Portion of Week	2013		2014		2015		2016		2017	
	Total Crashes	Fatal Crashes	Total Crashes	Fatal Crashes	Total Crashes	Fatal Crashes	Total Crashes	Fatal Crashes	Total Crashes	Fatal Crashes
Weekday	8,907	22	9,551	16	9,159	24	9,396	40	9,789	33
Weekend	2,802	10	2,557	17	2,973	12	2,952	22	3,087	11
Total	11,709	32	12,108	33	12,132	36	12,348	62	12,876	44

5-Year Crash Trends by Weekday (Monday - Friday) and Weekend (Saturday & Sunday)

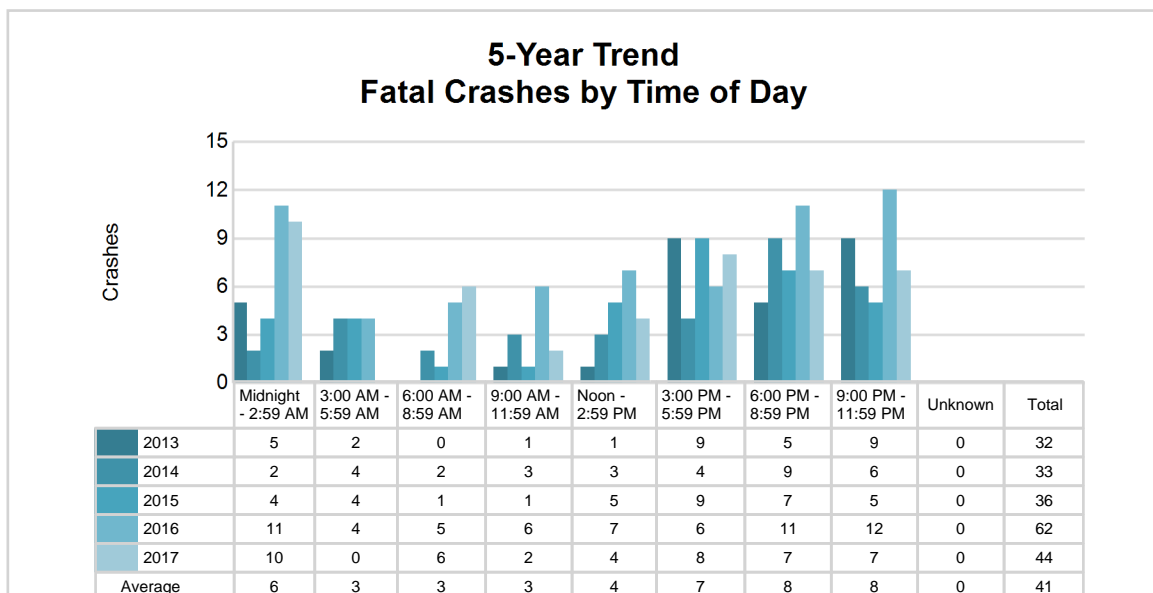
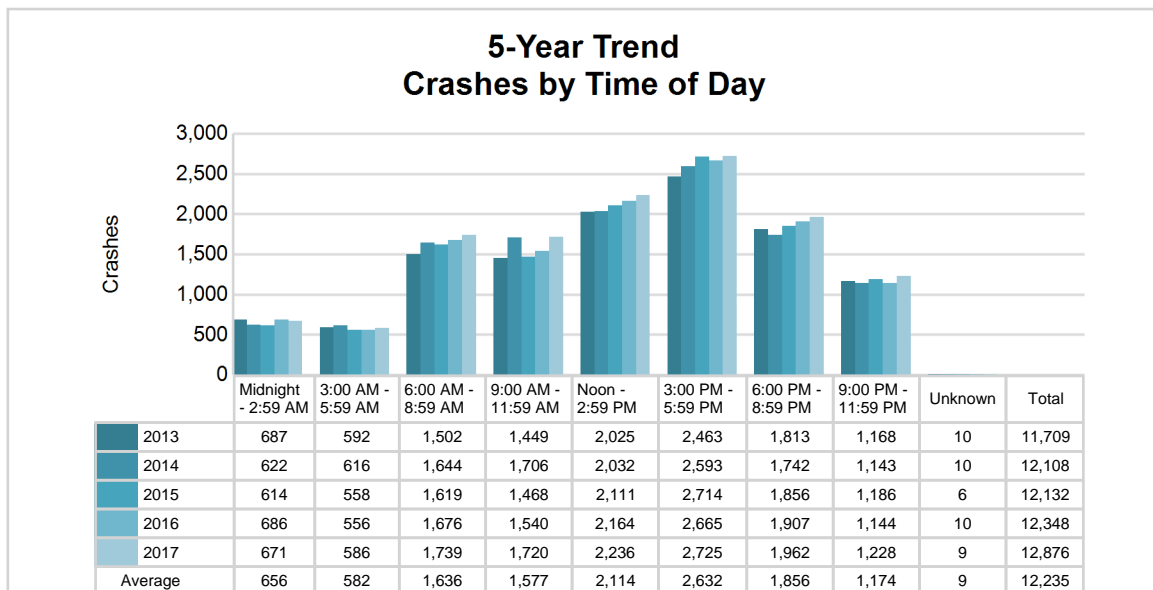


MSP Post 35 - Flint (continued)

5-Year Trend - Crashes by Time of Day

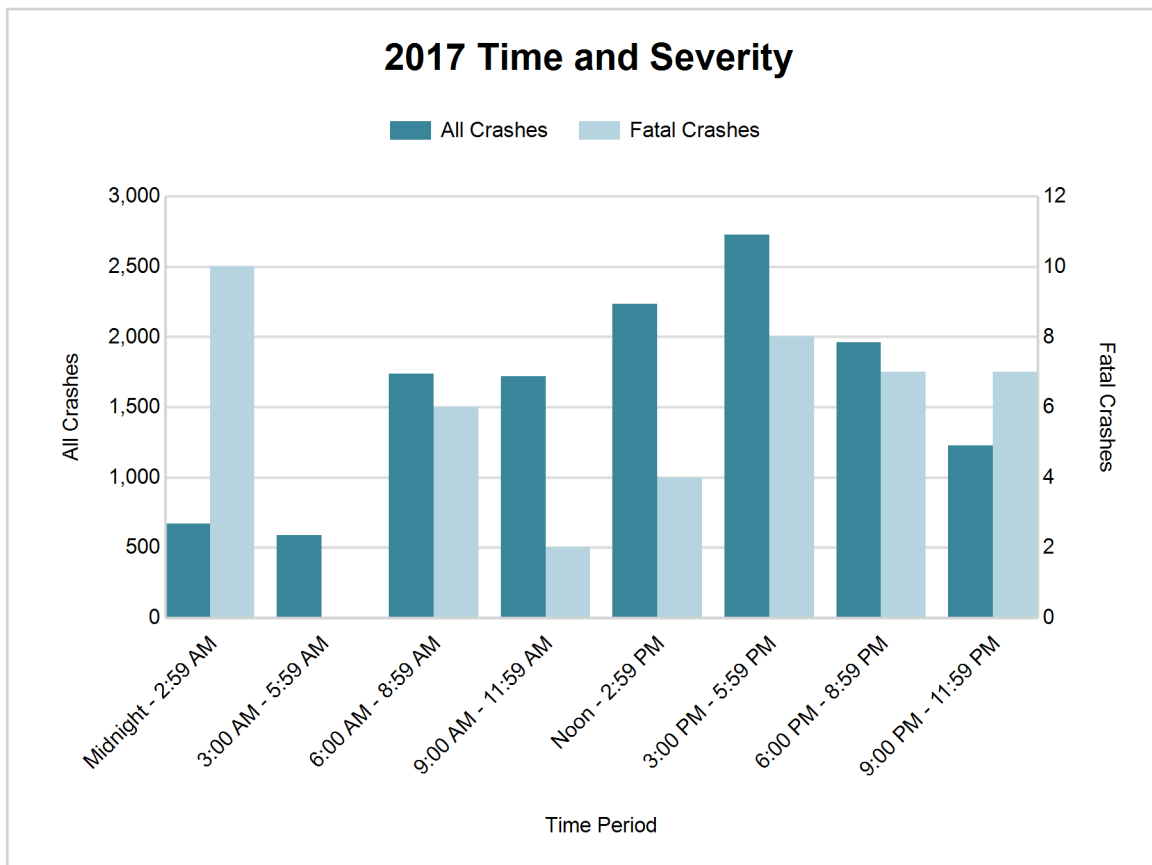
Time of Day	2013		2014		2015		2016		2017	
	Total Crashes	Fatal Crashes	Total Crashes	Fatal Crashes	Total Crashes	Fatal Crashes	Total Crashes	Fatal Crashes	Total Crashes	Fatal Crashes
Midnight - 2:59 AM	687	5	622	2	614	4	686	11	671	10
3:00 AM - 5:59 AM	592	2	616	4	558	4	556	4	586	0
6:00 AM - 8:59 AM	1,502	0	1,644	2	1,619	1	1,676	5	1,739	6
9:00 AM - 11:59 AM	1,449	1	1,706	3	1,468	1	1,540	6	1,720	2
Noon - 2:59 PM	2,025	1	2,032	3	2,111	5	2,164	7	2,236	4
3:00 PM - 5:59 PM	2,463 †	9	2,593 †	4	2,714 †	9	2,665 †	6	2,725 †	8
6:00 PM - 8:59 PM	1,813	5	1,742	9	1,856	7	1,907	11	1,962	7
9:00 PM - 11:59 PM	1,168	9	1,143	6	1,186	5	1,144	12	1,228	7
Unknown	10	0	10	0	6	0	10	0	9	0
Total	11,709	32	12,108	33	12,132	36	12,348	62	12,876	44

Note: † Indicates that the highest number of total crashes reported in the 5-year period occurred in the same time period



2017 - Time and Severity

Time of Day	All Crashes		Fatal Crashes		Injury Crashes			PDO Crashes
	Number	% of Total	Number	% of Fatal	A	B	C	Number
Midnight - 2:59 AM	671	5.2	10	22.7	20	47	100	494
3:00 AM - 5:59 AM	586	4.6	0	0.0	6	21	50	509
6:00 AM - 8:59 AM	1,739	13.5	6	13.6	17	70	222	1,424
9:00 AM - 11:59 AM	1,720	13.4	2	4.5	16	82	275	1,345
Noon - 2:59 PM	2,236	17.4	4	9.1	37	127	411	1,657
3:00 PM - 5:59 PM	2,725	21.2	8	18.2	38	140	494	2,045
6:00 PM - 8:59 PM	1,962	15.2	7	15.9	34	90	268	1,563
9:00 PM - 11:59 PM	1,228	9.5	7	15.9	29	64	145	983
Unknown	9	0.1	0	0.0	0	0	1	8
Total	12,876	100.0	44	100.0	197	641	1,966	10,028

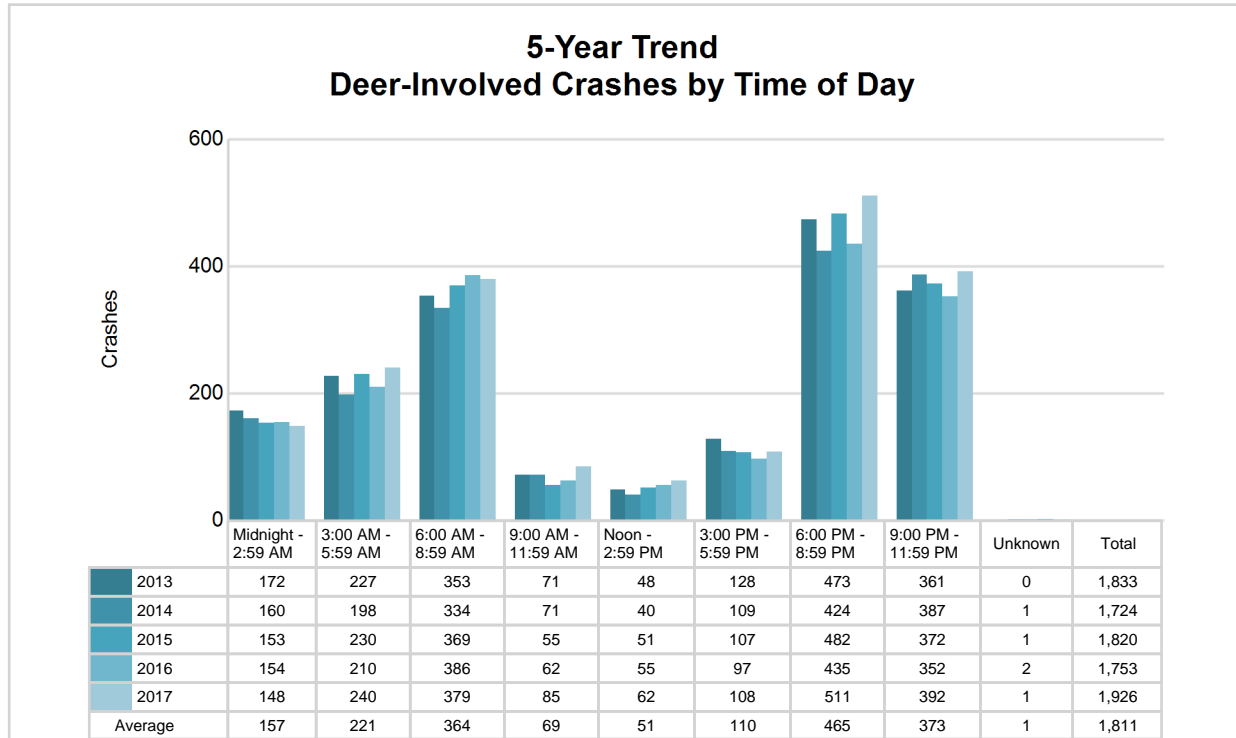


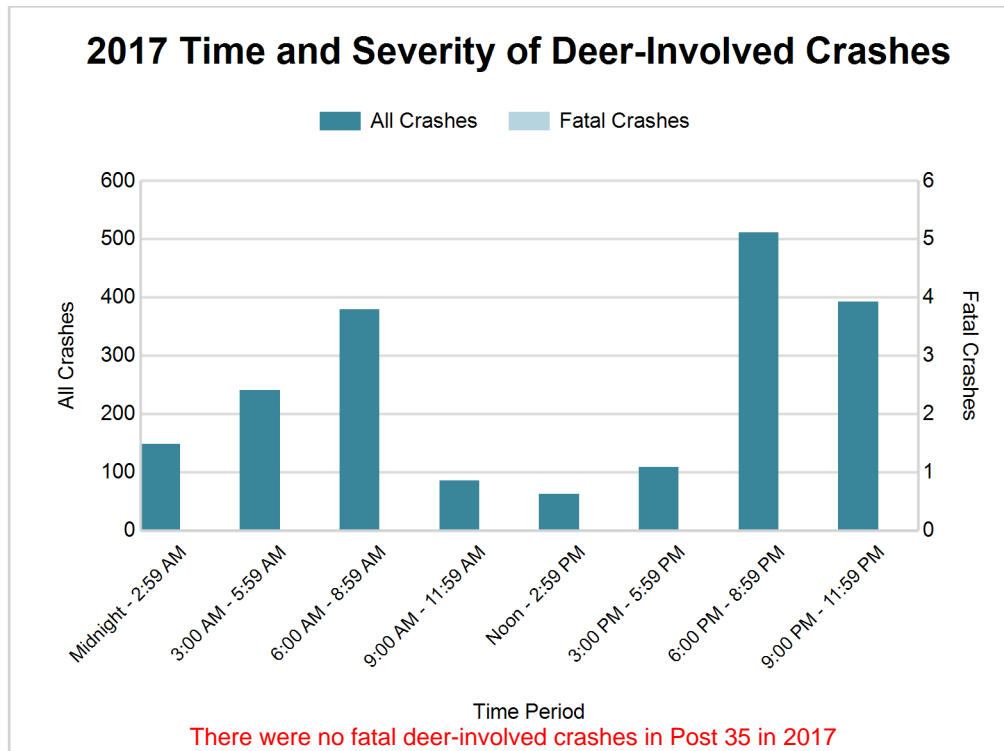
MSP Post 35 - Flint (continued)

5-Year Trend - Deer-Involved Crashes by Time of Day

Time of Day	2013		2014		2015		2016		2017	
	Total Crashes	Fatal Crashes	Total Crashes	Fatal Crashes	Total Crashes	Fatal Crashes	Total Crashes	Fatal Crashes	Total Crashes	Fatal Crashes
Midnight - 2:59 AM	172	0	160	0	153	0	154	0	148	0
3:00 AM - 5:59 AM	227	0	198	0	230	0	210	0	240	0
6:00 AM - 8:59 AM	353	0	334	0	369	0	386	0	379	0
9:00 AM - 11:59 AM	71	0	71	0	55	0	62	0	85	0
Noon - 2:59 PM	48	0	40	0	51	0	55	0	62	0
3:00 PM - 5:59 PM	128	0	109	0	107	0	97	0	108	0
6:00 PM - 8:59 PM	473 †	0	424 †	0	482 †	0	435 †	0	511 †	0
9:00 PM - 11:59 PM	361	0	387	0	372	0	352	0	392	0
Unknown	0	0	1	0	1	0	2	0	1	0
Total	1,833	0	1,724	0	1,820	0	1,753	0	1,926	0

Note: † Indicates that the highest number of total crashes reported in the 5-year period occurred in the same time period





2017 - Reported Motor Vehicle Crashes by County

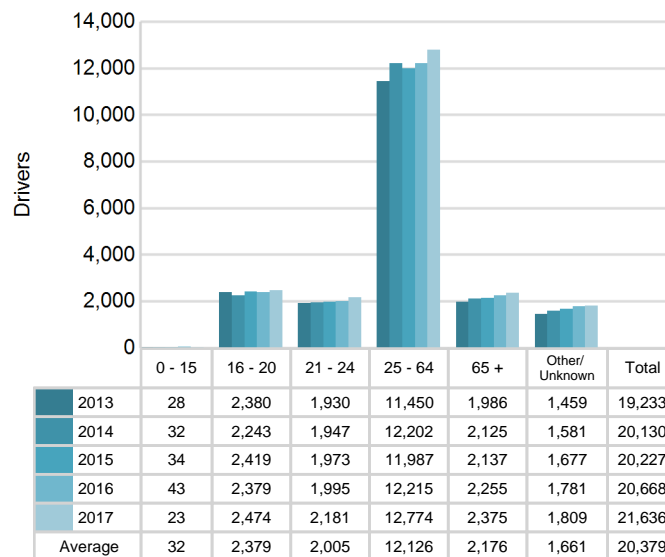
County	Crashes											Persons	
	Total	Fatal	Injury	Property Damage	Inter-state	US Route	State Route	Local Street	Alcohol-Involved	Drug-Involved	Deer-Involved	Fatalities	Injuries
Genesee	10,762	38	2,504	8,220	1,902	457	1,568	6,825	327	95	1,049	39	3,504
Shiawassee	2,114	6	300	1,808	271	0	654	1,187	74	16	877	6	414
Total	12,876	44	2,804	10,028	2,173	457	2,222	8,012	401	111	1,926	45	3,918

MSP Post 35 - Flint (continued)

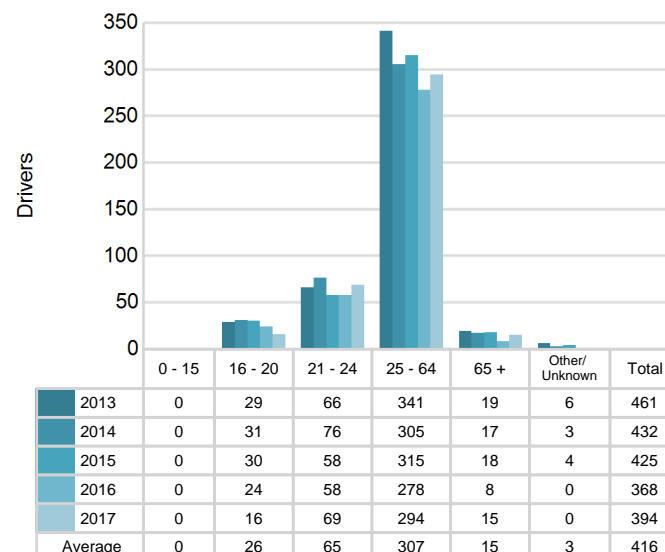
5-Year Trend - Drivers in Crashes Coded Drinking by Driver Age

Driver Age	2013		2014		2015		2016		2017	
	Total Drivers in Crashes	Total Drivers Coded Drinking	Total Drivers in Crashes	Total Drivers Coded Drinking	Total Drivers in Crashes	Total Drivers Coded Drinking	Total Drivers in Crashes	Total Drivers Coded Drinking	Total Drivers in Crashes	Total Drivers Coded Drinking
0 - 15	28	0	32	0	34	0	43	0	23	0
16 - 20	2,380	29	2,243	31	2,419	30	2,379	24	2,474	16
21 - 24	1,930	66	1,947	76	1,973	58	1,995	58	2,181	69
25 - 64	11,450	341	12,202	305	11,987	315	12,215	278	12,774	294
65 +	1,986	19	2,125	17	2,137	18	2,255	8	2,375	15
Unknown	1,459	6	1,581	3	1,677	4	1,781	0	1,809	0
Total	19,233	461	20,130	432	20,227	425	20,668	368	21,636	394

5-Year Trend Total Drivers in Crashes by Age



5-Year Trend Total Drivers Coded Drinking by Age



2017 - Bodily Alcohol Concentration (BAC) Results Among All Vehicle Drivers in Alcohol-Involved Crashes by Age

Age Group	Drivers				BAC Result Range for Drivers Coded Drinking				
	Total Drivers in Alcohol-Involved Crashes	Total Drivers Tested in all Crashes	Total Drivers Coded Drinking, Tested	Total Drivers Coded Drinking	BAC = 0.00	BAC 0.01 g/dL to 0.07 g/dL	BAC 0.08 g/dL to 0.16 g/dL	BAC 0.17 g/dL and Above	BAC Not Reported
0 - 15	1	0	0	0	0	0	0	0	0
16 - 20	32	23	13	16	0	1	5	4	6
21 - 24	87	64	54	69	1	4	12	15	37
25 - 64	411	280	233	294	3	12	45	74	160
65 +	35	17	10	15	0	0	0	2	13
Unknown	20	0	0	0	0	0	0	0	0
Total	586	384	310	394	4	17	62	95	216

Notes: BAC measured in grams (g) per deciliter (dL).

BAC may not be reported if drivers are not tested or if the results are not available immediately (as in the case of a blood test).

A driver may be coded by the officer as drinking even though no test is administered.

Alcohol-Involved Crashes

In 2017, there were 586 drivers in alcohol-involved crashes; 394 (67.2%) of those drivers were coded as had-been-drinking by the officer on the crash form.

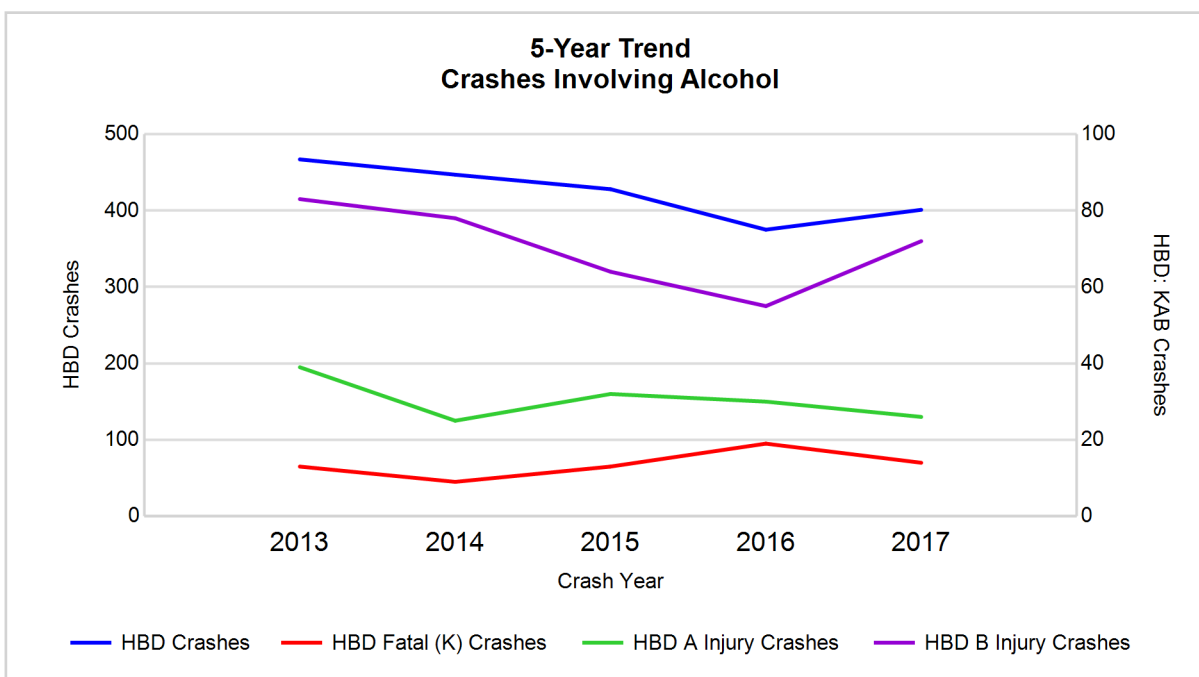
- 157 (39.8%) of the 394 drivers had a blood alcohol concentration (BAC) of 0.08 g/dL (grams per deciliter) or greater, and 95 (60.5%) of the 157 drivers had a BAC at or above 0.17 g/dL.
- 310 (78.7%) of the 394 drivers were coded as had-been-drinking and were tested for alcohol consumption.

5-Year Trend - Crashes Involving Alcohol

Year	All Crashes	HBD Crashes	% HBD	Fatal Crashes	HBD Fatal Crashes	% HBD	A Injury Crashes	HBD A Injury Crashes	% HBD	B Injury Crashes	HBD B Injury Crashes	% HBD
2013	11,709	467	4.0	32	13	40.6	177	39	22.0	556	83	14.9
2014	12,108	447	3.7	33	9	27.3	132	25	18.9	525	78	14.9
2015	12,132	428	3.5	36	13	36.1	145	32	22.1	573	64	11.2
2016	12,348	375	3.0	62	19	30.6	176	30	17.0	646	55	8.5
2017	12,876**	401	3.1	44	14	31.8	197**	26	13.2*	641	72	11.2

Note: * Indicates that the most recent year is the lowest number or percentage reported in the 5-year period in that column

** Indicates that the most recent year is the highest number or percentage reported in the 5-year period in that column



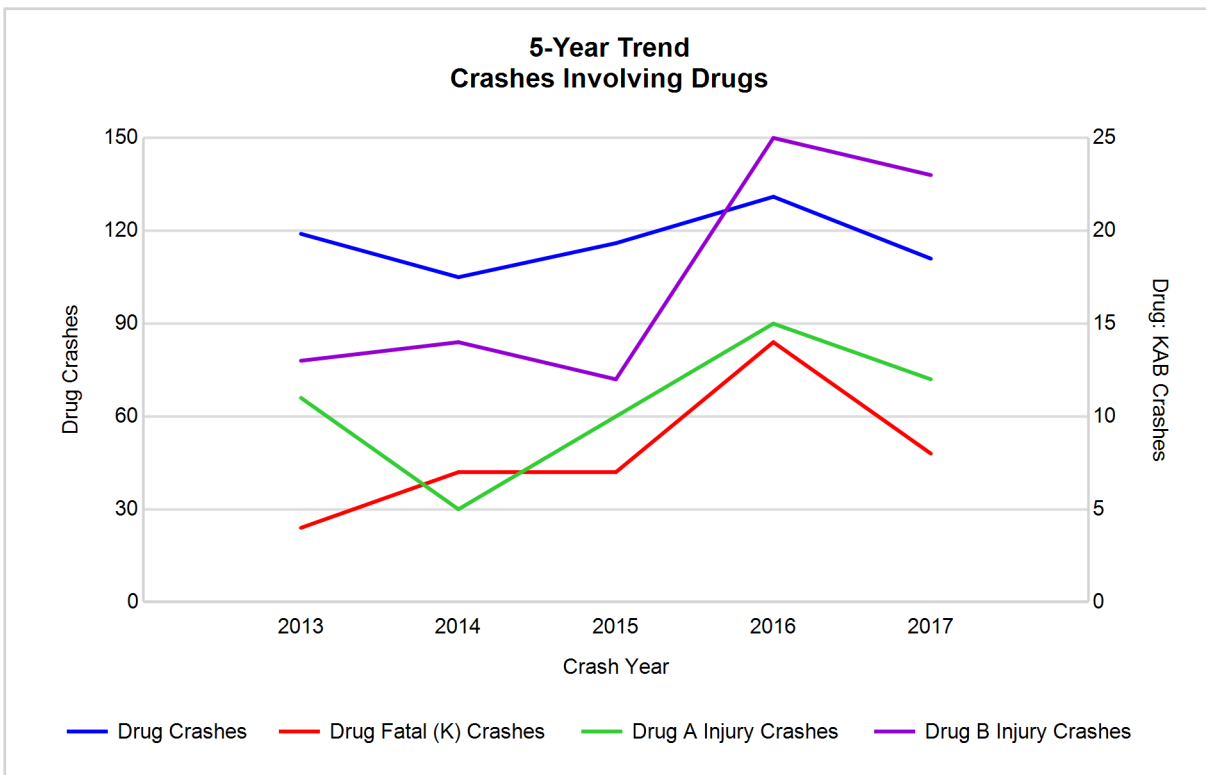
Note: Had-Been-Drinking (HBD)

5-Year Trend - Crashes Involving Drugs

Year	All Crashes	Drug Crashes	% Drug	Fatal Crashes	Drug Fatal Crashes	% Drug	A Injury Crashes	Drug A Injury Crashes	% Drug	B Injury Crashes	Drug B Injury Crashes	% Drug
2013	11,709	119	1.0	32	4	12.5	177	11	6.2	556	13	2.3
2014	12,108	105	0.9	33	7	21.2	132	5	3.8	525	14	2.7
2015	12,132	116	1.0	36	7	19.4	145	10	6.9	573	12	2.1
2016	12,348	131	1.1	62	14	22.6	176	15	8.5	646	25	3.9
2017	12,876**	111	0.9	44	8	18.2	197**	12	6.1	641	23	3.6

Note: * Indicates that the most recent year is the lowest number or percentage reported in the 5-year period in that column

** Indicates that the most recent year is the highest number or percentage reported in the 5-year period in that column

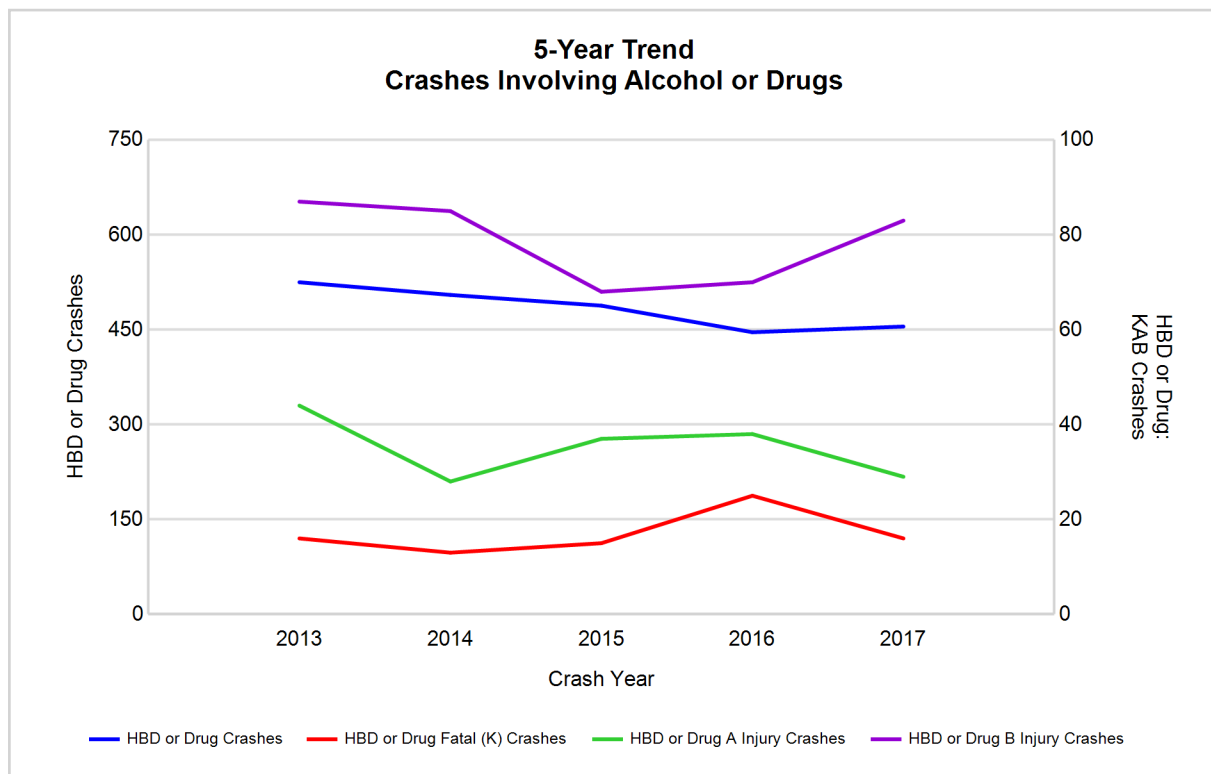


5-Year Trend - Crashes Involving Alcohol or Drugs

Year	All Crashes	HBD or Drug Crashes	% HBD or Drug	Fatal Crashes	HBD or Drug Fatal Crashes	% HBD or Drug	A Injury Crashes	HBD or Drug A Injury Crashes	% HBD or Drug	B Injury Crashes	HBD or Drug B Injury Crashes	% HBD or Drug
2013	11,709	525	4.5	32	16	50.0	177	44	24.9	556	87	15.6
2014	12,108	505	4.2	33	13	39.4	132	28	21.2	525	85	16.2
2015	12,132	488	4.0	36	15	41.7	145	37	25.5	573	68	11.9
2016	12,348	446	3.6	62	25	40.3	176	38	21.6	646	70	10.8
2017	12,876**	455	3.5*	44	16	36.4*	197**	29	14.7*	641	83	12.9

Note: * Indicates that the most recent year is the lowest number or percentage reported in the 5-year period in that column

** Indicates that the most recent year is the highest number or percentage reported in the 5-year period in that column



Note: Had-Been-Drinking (HBD)

2017 - Restraints Worn Among Vehicle Drivers and Injured Passengers by Vehicle Type

Vehicle Type	Total Occupants			Fatalities			A - Suspected Serious			B - Suspected Minor			C - Possible Injury			No Injury		
	Total	Used Restraint	%	Total	Used Restraint	%	Total	Used Restraint	%	Total	Used Restraint	%	Total	Used Restraint	%	Total	Used Restraint	%
Passenger car, SUV, van	18,404	16,589	90.1	28	13	46.4	136	111	81.6	607	540	89.0	2,491	2,361	94.8	13,867	13,547	97.7
Motor home	28	27	96.4	0	0	0.0	1	1	100.0	1	1	100.0	4	4	100.0	22	21	95.5
Pickup truck	2,975	2,669	89.7	1	1	100.0	35	25	71.4	82	69	84.1	251	242	96.4	2,387	2,328	97.5
Small truck under 10,000 lbs. GVWR	122	105	86.1	0	0	0.0	0	0	0.0	4	4	100.0	7	4	57.1	100	97	97.0
Motorcycle	133	81	60.9	4	1	25.0	31	18	58.1	36	21	58.3	30	20	66.7	27	21	77.8
Moped / goped	13	5	38.5	0	0	0.0	3	1	33.3	3	1	33.3	3	1	33.3	3	2	66.7
Go-cart / golf cart	4	3	75.0	0	0	0.0	0	0	0.0	0	0	0.0	0	0	0.0	4	3	75.0
Snowmobile	2	0	0.0	0	0	0.0	1	0	0.0	0	0	0.0	0	0	0.0	1	0	0.0
Off-Road Vehicle - ORV / All-Terrain Vehicle - ATV	11	1	9.1	0	0	0.0	3	0	0.0	5	0	0.0	3	1	33.3	0	0	0.0
Other	89	62	69.7	0	0	0.0	0	0	0.0	4	0	0.0	3	2	66.7	70	60	85.7
Truck/bus over 10,000 lbs.	487	444	91.2	0	0	0.0	1	0	0.0	8	6	75.0	30	21	70.0	428	417	97.4
Unknown	344	2	0.6	0	0	0.0	0	0	0.0	0	0	0.0	0	0	0.0	1	1	100.0
Total	22,612	19,988	88.4	33	15	45.5	211	156	73.9	750	642	85.6	2,822	2,656	94.1	16,910	16,497	97.6

Note: Restraint Use includes shoulder belt only used, lap belt only used, both lap and shoulder belts used, child restraint used, restraint failure, and helmet worn.

2017 - Restraints Worn Among Vehicle Drivers and Injured Passengers by Age

Age Group	Total Occupants			Fatalities			A - Suspected Serious			B - Suspected Minor			C - Possible Injury			No Injury		
	Total	Used Restraint	%	Total	Used Restraint	%	Total	Used Restraint	%	Total	Used Restraint	%	Total	Used Restraint	%	Total	Used Restraint	%
0 - 15	275	244	88.7	2	1	50.0	6	4	66.7	57	49	86.0	189	171	90.5	21	19	90.5
16 - 20	2,631	2,528	96.1	2	1	50.0	22	18	81.8	118	91	77.1	329	310	94.2	2,150	2,104	97.9
21 - 24	2,268	2,155	95.0	4	2	50.0	29	20	69.0	91	80	87.9	328	303	92.4	1,808	1,749	96.7
25 - 64	13,163	12,655	96.1	19	8	42.1	118	80	67.8	394	342	86.8	1,658	1,564	94.3	10,922	10,647	97.5
65 +	2,466	2,406	97.6	6	3	50.0	36	34	94.4	90	80	88.9	318	308	96.9	2,009	1,978	98.5
Unknown	1,809	0	0.0	0	0	0.0	0	0	0.0	0	0	0.0	0	0	0.0	0	0	0.0
Total	22,612	19,988	88.4	33	15	45.5	211	156	73.9	750	642	85.6	2,822	2,656	94.1	16,910	16,497	97.6

Note: Restraint Use includes shoulder belt only used, lap belt only used, both lap and shoulder belts used, child restraint used, restraint failure, and helmet worn.

5-Year Trend - Restraint Use Among Drivers

Restraint Use	2013			2014			2015			2016			2017		
	Drivers	Fatal Drivers	Injured Drivers	Drivers	Fatal Drivers	Injured Drivers	Drivers	Fatal Drivers	Injured Drivers	Drivers	Fatal Drivers	Injured Drivers	Drivers	Fatal Drivers	Injured Drivers
No belts available	141	0	32	170	2	27	112	0	22	60	1	8	43	0	11
Shoulder belt only used	100	1	8	46	0	4	16	0	1	54	0	9	119	0	22
Lap belt only used	55	0	6	45	0	4	73	0	5	75	1	6	50	0	3
Both lap & shoulder belts used	16,815	4	2,184	17,610	12	2,130	17,656	11	2,219	17,928	16	2,415	18,880	11	2,527
No belts used	129	4	67	144	7	55	175	6	85	147	8	63	134	8	63
Child restraint used	1	0	0	0	0	0	1	0	0	7	0	0	4	0	0
Child restraint not used, unavailable or improper use	0	0	0	1	0	0	1	0	0	0	0	0	0	0	0
Restraint failure	9	0	4	12	0	3	9	0	0	7	0	0	8	0	2
Restraint use unknown	856	5	98	975	2	73	994	1	74	1,764	5	84	2,226	2	88
Helmet worn	85	1	56	77	1	54	90	1	65	108	2	77	82	1	58
Helmet not worn	46	2	37	59	1	45	58	5	43	68	5	48	45	3	37
Helmet use unknown	9	0	3	6	2	2	21	1	6	17	0	9	7	0	4
Uncoded & errors	987	0	6	985	0	1	1,021	0	4	433	0	0	38	0	0
Total	19,233	17	2,501	20,130	27	2,398	20,227	25	2,524	20,668	38	2,719	21,636	25	2,815

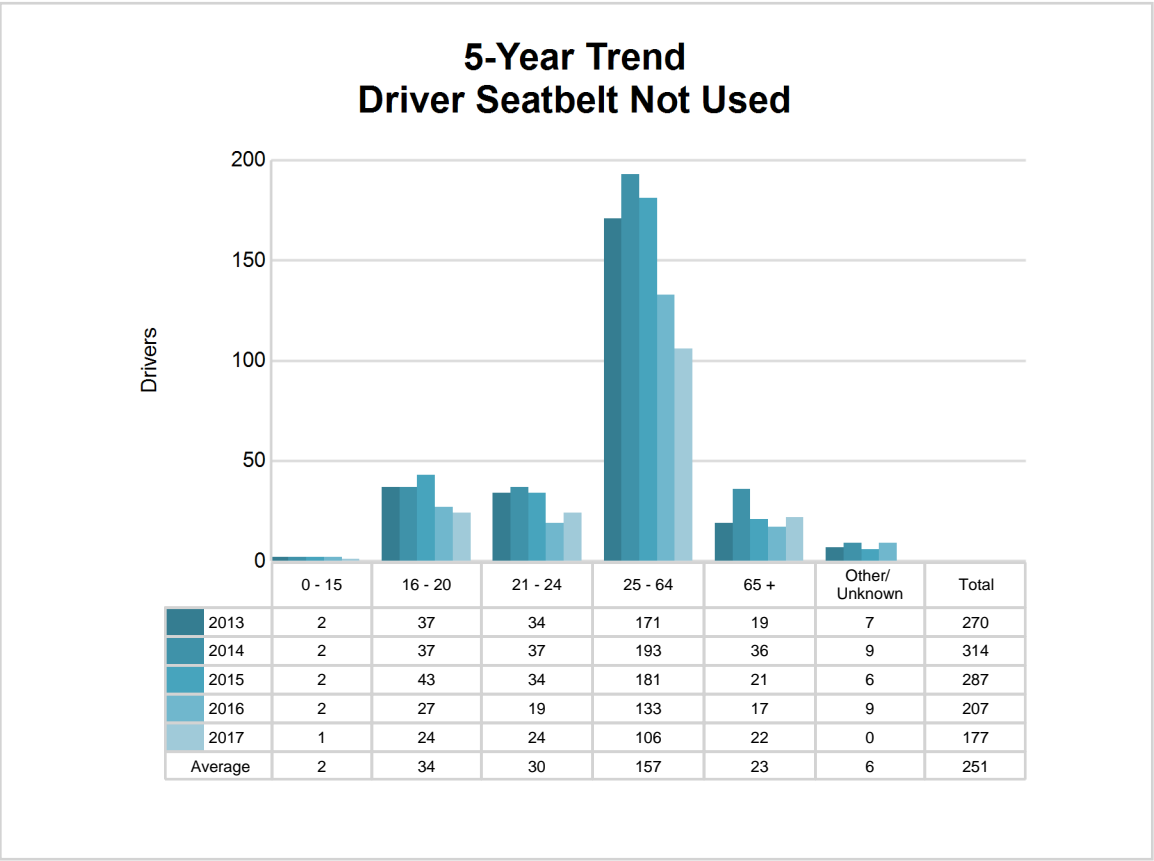
5-Year Trend - Restraint Use Among Drivers Coded Drinking

Restraint Use	2013			2014			2015			2016			2017		
	Drivers	Fatal Drivers	Injured Drivers	Drivers	Fatal Drivers	Injured Drivers	Drivers	Fatal Drivers	Injured Drivers	Drivers	Fatal Drivers	Injured Drivers	Drivers	Fatal Drivers	Injured Drivers
No belts available	6	0	3	5	0	2	3	0	3	0	0	0	1	0	1
Shoulder belt only used	8	0	1	0	0	0	0	0	0	1	0	0	2	0	1
Lap belt only used	1	0	0	1	0	1	3	0	1	2	0	0	1	0	1
Both lap & shoulder belts used	324	0	109	305	1	92	303	3	90	272	3	82	283	2	93
No belts used	26	2	18	31	2	13	41	3	27	30	3	16	26	3	14
Child restraint used	0	0	0	0	0	0	0	0	0	0	0	0	0	0	0
Child restraint not used, unavailable or improper use	0	0	0	0	0	0	0	0	0	0	0	0	0	0	0
Restraint failure	0	0	0	0	0	0	1	0	0	1	0	0	0	0	0
Restraint use unknown	83	2	24	75	1	22	53	0	18	53	3	14	70	0	17
Helmet worn	6	1	5	2	0	1	5	0	4	2	0	1	1	0	1
Helmet not worn	5	0	5	11	0	9	12	2	10	7	2	5	9	3	6
Helmet use unknown	1	0	1	0	0	0	1	0	1	0	0	0	0	0	0
Uncoded & errors	1	0	0	2	0	0	3	0	1	0	0	0	1	0	0
Total	461	5	166	432	4	140	425	8	155	368	11	118	394	8	134

5-Year Trend - Seatbelt Not Used Among Drivers by Age

Age Group	2013			2014			2015			2016			2017		
	Drivers	Fatal Drivers	Injured Drivers	Drivers	Fatal Drivers	Injured Drivers	Drivers	Fatal Drivers	Injured Drivers	Drivers	Fatal Drivers	Injured Drivers	Drivers	Fatal Drivers	Injured Drivers
0 - 15	2	0	0	2	0	1	2	0	2	2	0	0	1	0	0
16 - 20	37	0	16	37	1	12	43	1	16	27	1	11	24	0	14
21 - 24	34	0	10	37	0	12	34	0	15	19	0	8	24	1	16
25 - 64	171	4	68	193	5	52	181	3	67	133	6	50	106	6	37
65 +	19	0	5	36	3	5	21	2	5	17	2	2	22	1	7
Unknown	7	0	0	9	0	0	6	0	2	9	0	0	0	0	0
Total	270	4	99	314	9	82	287	6	107	207	9	71	177	8	74

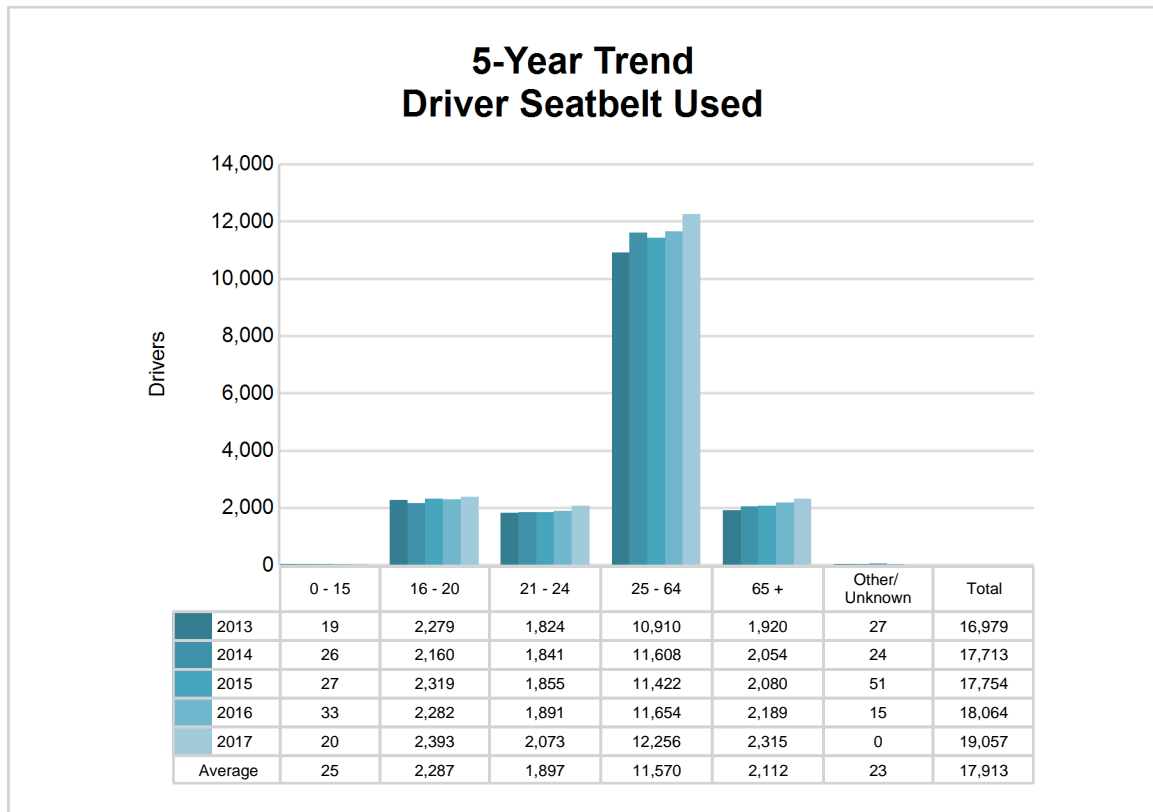
Note: Seatbelt Not Used includes no belts available or no belts used.



5-Year Trend - Seatbelt Used Among Drivers by Age

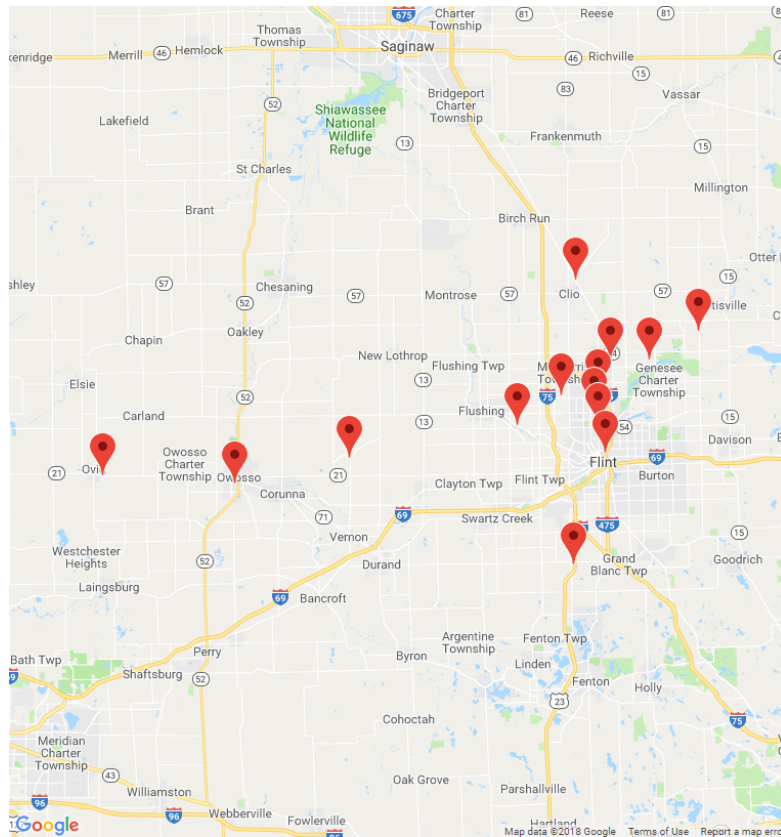
Age Group	2013			2014			2015			2016			2017		
	Drivers	Fatal Drivers	Injured Drivers	Drivers	Fatal Drivers	Injured Drivers	Drivers	Fatal Drivers	Injured Drivers	Drivers	Fatal Drivers	Injured Drivers	Drivers	Fatal Drivers	Injured Drivers
0 - 15	19	0	3	26	0	2	27	0	4	33	0	1	20	0	1
16 - 20	2,279	0	295	2,160	0	256	2,319	2	298	2,282	0	284	2,393	1	287
21 - 24	1,824	0	247	1,841	1	214	1,855	0	229	1,891	2	247	2,073	1	325
25 - 64	10,910	4	1,388	11,608	7	1,400	11,422	8	1,407	11,654	12	1,554	12,256	6	1,609
65 +	1,920	1	268	2,054	4	269	2,080	1	287	2,189	3	344	2,315	3	332
Unknown	27	0	1	24	0	0	51	0	0	15	0	0	0	0	0
Total	16,979	5	2,202	17,713	12	2,141	17,754	11	2,225	18,064	17	2,430	19,057	11	2,554

Note: Seatbelt Used includes shoulder belt only used, lap belt only used, both lap and shoulder belts used, and restraint failure.



5-Year Trend - Drivers in Crashes by Hazardous Action

Hazardous Action	2013		2014		2015		2016		2017	
	Total Drivers in Crashes	Drivers in Fatal Crashes	Total Drivers in Crashes	Drivers in Fatal Crashes	Total Drivers in Crashes	Drivers in Fatal Crashes	Total Drivers in Crashes	Drivers in Fatal Crashes	Total Drivers in Crashes	Drivers in Fatal Crashes
None	9,769	20	10,147	30	10,422	28	10,461	38	10,951	26
Speed too fast	1,571	3	1,783	5	1,419	9	1,463	9	1,492	7
Speed too slow	19	0	11	0	17	1	15	0	17	0
Failed to yield	1,872	3	1,774	2	1,919	6	2,002	6	2,211	6
Disregard traffic control	578	1	621	3	667	4	613	3	558	2
Drove wrong way	12	1	24	1	20	0	20	2	14	0
Drove left of center	114	2	124	4	119	2	160	6	136	1
Improper passing	91	0	113	0	88	0	94	0	112	1
Improper lane use	356	1	385	0	367	0	412	0	525	1
Improper turn	212	0	207	0	264	0	216	1	238	1
Improper/no signal	35	0	38	0	22	0	28	0	24	0
Improper backing	285	0	284	0	298	0	300	1	249	0
Unable to stop in assured clear distance	2,234	1	2,519	2	2,516	1	2,626	1	2,644	1
Other	709	1	770	5	696	3	740	8	695	3
Unknown	457	8	473	6	497	3	785	10	1,014	6
Reckless driving	218	3	181	5	144	0	126	1	137	4
Careless/negligent driving	610	3	590	0	682	3	541	5	575	4
Uncoded & errors	91	0	86	0	70	0	66	0	44	0
Total	19,233	47	20,130	63	20,227	60	20,668	91	21,636	63



The picture above represents all 2017 alcohol-involved fatal crashes in Post 35.

In 2017, there were 401 alcohol-involved crashes in Post 35:

- 14 K - Fatal Crashes
- 26 A - Suspected Serious Injury Crashes
- 72 B - Suspected Minor Injury Crashes
- 84 C - Possible Injury Crashes
- 205 O - Property Damage Only/No Injury Crashes

Office of Highway Safety Planning

Physical Address:
7150 Harris Drive
Dimondale, Michigan 48821

Mailing Address:
P.O. Box 30634
Lansing, Michigan 48909

Phone: (517) 284-3112
Fax: (517) 284-3151

Find us on the web:
MichiganTrafficCrashFacts.org

