



2017

**MTCF**  
Michigan Traffic  
Crash Facts

# Michigan Traffic Crash Facts

## Reporting Criteria

Please pay particular attention to the wording when interpreting the three levels of data gathered for this report.

### Crash

The Crash Level analyzes data related to crash events and returns one result per crash.

Examples: Time, weather, and location.

### Units

The Units Level analyzes the experience of the units in the crash and returns one result per vehicle, driver, pedestrian, bicyclist, or train.

Examples: Vehicle type, driver condition, and unit events.

### People

The People Level analyzes the experience of the people involved in the crash and returns one result per occupant/person/party.

Examples: Age, injury severity, and seat belt or helmet use.

### **KABCO Injury Indicator:**

K = Killed

A = Suspected Serious Injury

B = Suspected Minor Injury

C = Possible Injury

O = No Injury

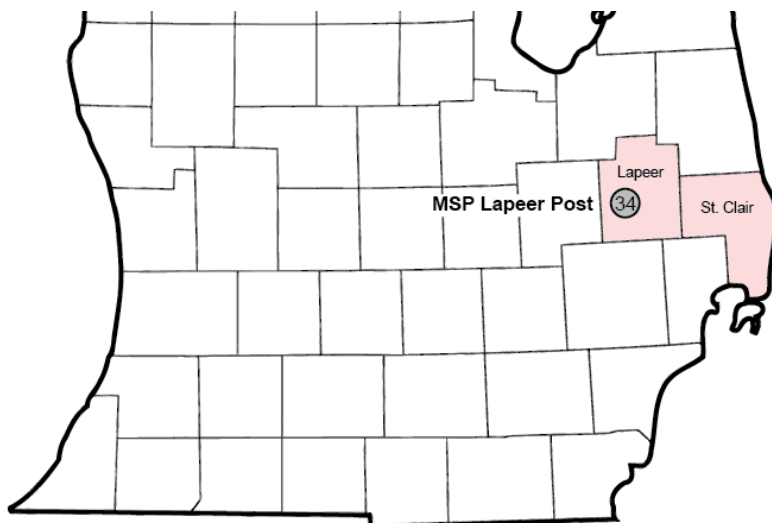
Property Damage Only (PDO)



## Michigan State Police (MSP) Post 34 - Lapeer

### 2017 Traffic Crash Data & 2013-2017 5-Year Trends

Post 34 is comprised of Lapeer and St. Clair counties. Trend tables for this report are based on those counties.



### Sources:

The crashes in this report occurred on public roadways in Michigan and resulted in injuries, fatalities, or property damage (with \$1,000 as a reporting threshold). The information was gathered from Michigan Traffic Crash Report Forms (UD-10) submitted by local police departments, sheriff's offices, and the Michigan State Police. Other related information was obtained from the departments of Transportation, State, and Community Health.

This page left intentionally blank

## MSP Post 34 - Lapeer

- There were 6,580 crashes in Post 34 during 2017. [Page 1]
- A total of 25 fatalities resulted from 24 fatal crashes in 2017 in Post 34. [Page 1]
- There were 1,596 injuries and 1,146 injury crashes. [Page 1]
- There were 5,410 property damage only crashes (no fatalities or injuries). [Page 1]
- December had the highest number of crashes (805). [Pages 1-2]
- November and October had the highest number of fatal crashes (4) and fatalities (4). [Pages 1-2]
- December had the highest number of injury crashes (116) while October had the highest number of injuries (163). [Page 1]
- December had the highest number of property damage only crashes (687). [Page 1]
- Of all vehicles involved in fatal crashes, 6 (17.1%) were motorcycles. [Page 1]
- Friday was the day of the week with the highest number of crashes (1,089) and Sunday had the highest number of fatal crashes (7). [Pages 2-3]
- The 3:00 PM - 5:59 PM time period had the highest number of crashes (1,322). This holds true for every year between 2013 and 2017. The 6:00 PM - 8:59 PM, 6:00 AM - 8:59 AM, 9:00 PM - 11:59 PM and 9:00 AM - 11:59 AM time periods had the highest number of fatal crashes (4). [Pages 5-6]
- During the period from 2013 to 2017, the highest number of deer crashes occurred in 2016 (2,057). The 6:00 PM - 8:59 PM time period consistently had the highest number of deer-involved crashes during the five-year period. There were 1 fatal crashes involving deer in 2017. [Pages 7-8]
- St. Clair County (56.3%) had the highest number of crashes in Post 34 in 2017, followed by Lapeer County (43.7%), and (0.0%). [Page 8]
- St. Clair County (56.0%) had the highest number of fatalities in Post 34 in 2017, followed by Lapeer County (44.0%), and (0.0%). [Page 8]
- The highest number of drivers in crashes (10,450) occurred during 2016 and the highest number of drivers coded drinking in crashes (293) occurred during 2013 within the five year period between 2013 and 2017. [Page 9]
- A total of 264 crashes involved alcohol in 2017. [Page 10]
- Alcohol-involved fatal crashes were the highest in 2013 during the five-year period from 2013 to 2017 at 12. [Page 10]
- A total of 85 crashes, 5 fatal crashes, and 19 suspected serious injury crashes involved drugs in 2017. [Page 11]
- There were 9,271 drivers wearing seatbelts and 76 drivers not wearing seatbelts in crashes in 2017. Of the 76 drivers not wearing seat belts, 6 (7.9%) were killed and 41 (53.9%) were injured. [Pages 14-16]
- The most common hazardous action coded for drivers in 2017 in all crashes was unable to stop in assured clear distance (1,165), while the most common hazardous action coded for drivers in fatal crashes was unknown (6). [Page 17]

# MSP Post 34 - Lapeer (continued)

## Post 34 Experience

In 2017:

There were 10,091 drivers involved in 6,580 motor vehicle crashes in MSP Post 34. Of those crashes, 24 were classified as fatal, resulting in 25 fatalities. An additional 1,596 persons were injured.

Post 34 experienced the highest number of motor vehicle crashes (805) in December, the highest number of fatal crashes (4) and the highest number of persons killed (4) in October and November.

Michigan driver statistics indicate 6.8 percent of licensed drivers in Post 34 were age 16-20, and 12.5 percent of drivers in crashes were also in that age group.

## 2017 - Crashes and Injuries by Month

Month	Crashes				Persons	
	Total	Fatal	Injury	Property Damage Only (PDO)	Fatalities	Injuries
January	557	1	102	454	1	140
February	392	1	62	329	2	78
March	521	0	79	442	0	106
April	410	1	82	327	1	120
May	490	2	87	401	2	131
June	527	3	109	415	3	157
July	473	2	101	370	2	143
August	439	2	105	332	2	140
September	490	2	97	391	2	155
October	737	4	113	620	4	163
November	739	4	93	642	4	108
December	805	2	116	687	2	155
<b>Total</b>	<b>6,580</b>	<b>24</b>	<b>1,146</b>	<b>5,410</b>	<b>25</b>	<b>1,596</b>

## 2017 - Driver Statistics

Age Group	Post 34			Driver Rates	
	2017 Population	Licensed Drivers	Drivers in Crashes	Per 10k Population	Per 10k Licensed
0 - 15	45,202	1,393	18	4.0	129.2
16 - 20	15,090	13,095	1,260	835.0	962.2
21 - 24	11,734	11,656	888	756.8	761.8
25 - 64	130,989	124,338	6,289	480.1	505.8
65 +	44,509	40,875	1,137	255.5	278.2
Unknown	0	0	499	--	--
<b>Total</b>	<b>247,524</b>	<b>191,357</b>	<b>10,091</b>	<b>407.7</b>	<b>527.3</b>

## 2017 - Vehicles in Crashes

Vehicle Type	Motor Vehicles		Fatal Crashes		Injury Crashes	PDO Crashes
	Number of Vehicles	% of Total	Number	% of Total	Number	Number
Passenger car, SUV, van	7,643	75.7	18	51.4	1,518	6,107
Motor home	19	0.2	0	0.0	5	14
Pickup truck	1,850	18.3	10	28.6	341	1,499
Small truck under 10,000 lbs. GVWR	80	0.8	0	0.0	18	62
Motorcycle	69	0.7	6	17.1	50	13
Moped / goped	7	0.1	1	2.9	6	0
Go-cart / golf cart	2	0.0	0	0.0	1	1
Snowmobile	1	0.0	0	0.0	1	0
Off-Road Vehicle - ORV / All-Terrain Vehicle - ATV	15	0.1	0	0.0	13	2
Other	47	0.5	0	0.0	6	41
Truck/bus over 10,000 lbs.	252	2.5	0	0.0	47	205
Unknown	106	1.1	0	0.0	10	96
<b>Total</b>	<b>10,091</b>	<b>100.0</b>	<b>35</b>	<b>100.0</b>	<b>2,016</b>	<b>8,040</b>

## 5-Year Trend - Crashes by Month

Month	2013		2014		2015		2016		2017	
	Total Crashes	Fatal Crashes	Total Crashes	Fatal Crashes	Total Crashes	Fatal Crashes	Total Crashes	Fatal Crashes	Total Crashes	Fatal Crashes
January	615	1	743	0	748	0	696	5	557	1
February	562	1	553	1	560	0	608	1	392	1
March	513	0	561	0	443	4	475	1	521	0
April	363	3	410	1	415	0	504	0	410	1
May	493	3	492	3	504	2	461	1	490	2
June	476	3	509	3	503	0	539	2	527	3
July	470	3	445	7	522	6	469	2	473	2
August	429	2	438	2	438	6	497	2	439	2
September	444	1	467	2	534	1	530	7	490	2
October	667	2	702	4	673	3	692	4	737	4
November	771	2	790	2	836	3	739	2	739	4
December	667	1	509	1	630	1	694	3	805	2
<b>Total</b>	<b>6,470</b>	<b>22</b>	<b>6,619</b>	<b>26</b>	<b>6,806</b>	<b>26</b>	<b>6,904</b>	<b>30</b>	<b>6,580</b>	<b>24</b>

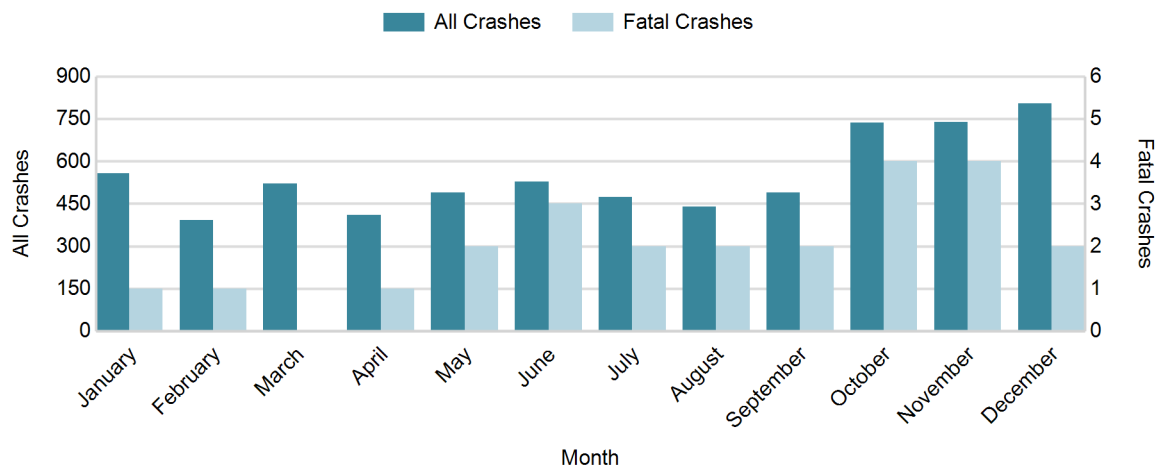
Note: † Indicates that the highest number of total crashes reported in the 5-year period occurred in the same month

## 5-Year Trend - Crashes by Day of Week

Day	2013		2014		2015		2016		2017	
	Total Crashes	Fatal Crashes	Total Crashes	Fatal Crashes	Total Crashes	Fatal Crashes	Total Crashes	Fatal Crashes	Total Crashes	Fatal Crashes
Monday	850	3	861	2	956	1	963	7	970	3
Tuesday	935	4	892	5	1,021	4	1,020	1	1,000	3
Wednesday	970	3	1,042	3	1,058	3	1,083	4	959	1
Thursday	983	2	1,101	3	1,044	4	1,034	3	1,008	3
Friday	1,057	2	1,110	2	1,026	2	1,120	6	1,089	3
Saturday	965	6	899	5	937	6	899	5	895	4
Sunday	710	2	714	6	764	6	785	4	659	7
<b>Total</b>	<b>6,470</b>	<b>22</b>	<b>6,619</b>	<b>26</b>	<b>6,806</b>	<b>26</b>	<b>6,904</b>	<b>30</b>	<b>6,580</b>	<b>24</b>

Note: † Indicates that the highest number of total crashes reported in the 5-year period occurred on the same day of the week

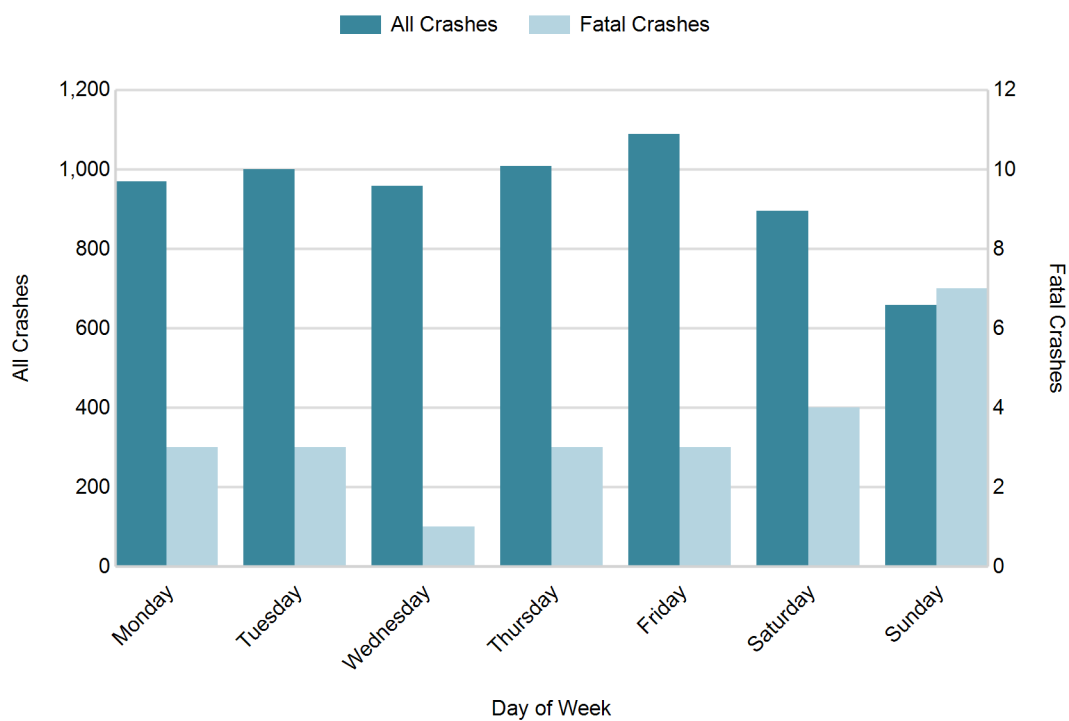
## 2017 Crashes by Month



## 2017 - Crashes by Day of Week

Day	All Crashes		Fatal Crashes		Injury Crashes			PDO Crashes
	Number	% of Total	Number	% of Fatal	A	B	C	Number
Monday	970	14.7	3	12.5	12	63	95	797
Tuesday	1,000	15.2	3	12.5	15	55	92	835
Wednesday	959	14.6	1	4.2	14	59	73	812
Thursday	1,008	15.3	3	12.5	14	61	100	830
Friday	1,089	16.6	3	12.5	27	58	110	891
Saturday	895	13.6	4	16.7	21	64	79	727
Sunday	659	10.0	7	29.2	21	60	53	518
<b>Total</b>	<b>6,580</b>	<b>100.0</b>	<b>24</b>	<b>100.0</b>	<b>124</b>	<b>420</b>	<b>602</b>	<b>5,410</b>

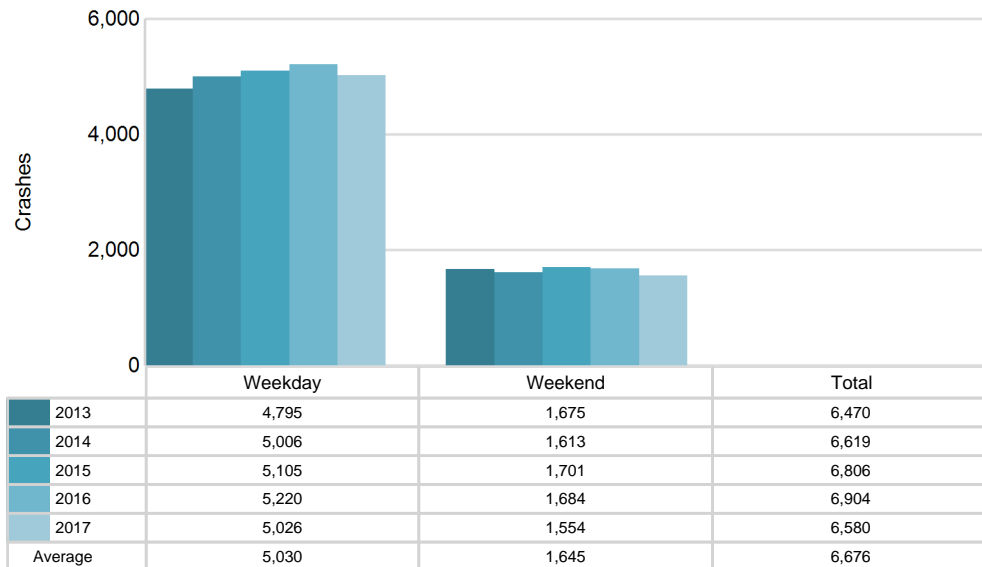
## 2017 Day of Week and Severity



## 5-Year Trend - Crashes by Weekday and Weekend

Portion of Week	2013		2014		2015		2016		2017	
	Total Crashes	Fatal Crashes	Total Crashes	Fatal Crashes	Total Crashes	Fatal Crashes	Total Crashes	Fatal Crashes	Total Crashes	Fatal Crashes
Weekday	4,795	14	5,006	15	5,105	14	5,220	21	5,026	13
Weekend	1,675	8	1,613	11	1,701	12	1,684	9	1,554	11
<b>Total</b>	<b>6,470</b>	<b>22</b>	<b>6,619</b>	<b>26</b>	<b>6,806</b>	<b>26</b>	<b>6,904</b>	<b>30</b>	<b>6,580</b>	<b>24</b>

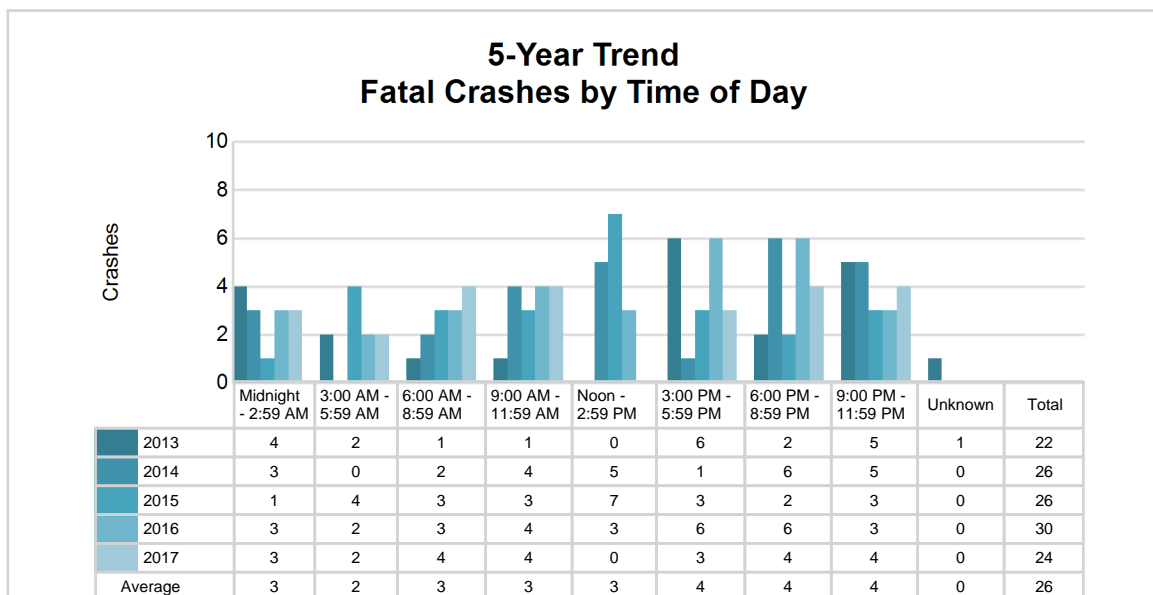
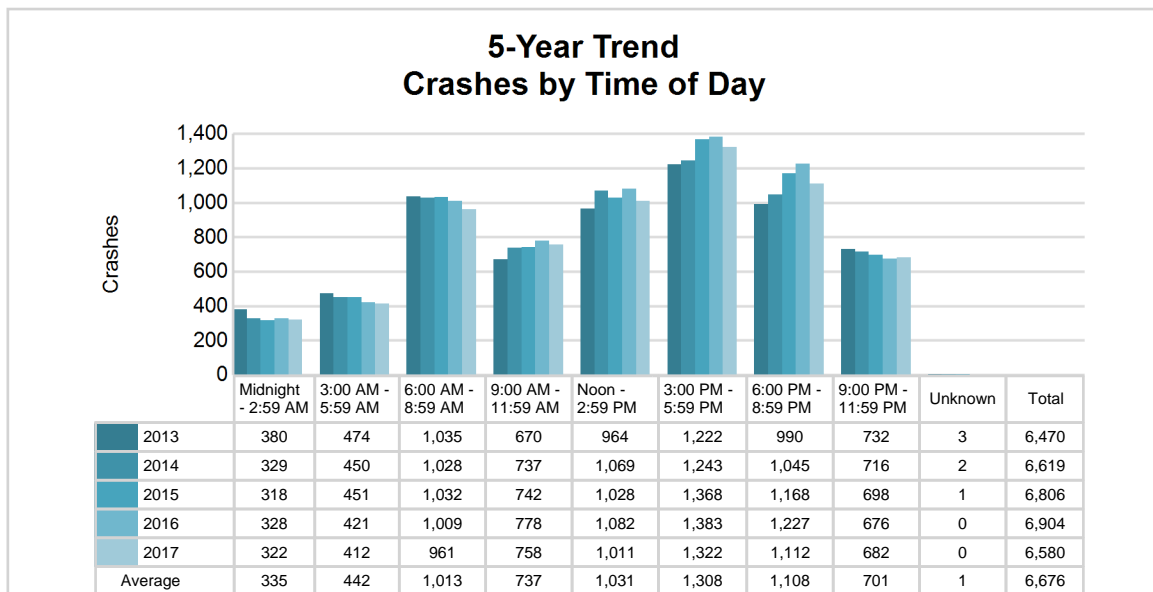
## 5-Year Crash Trends by Weekday (Monday - Friday) and Weekend (Saturday & Sunday)



## 5-Year Trend - Crashes by Time of Day

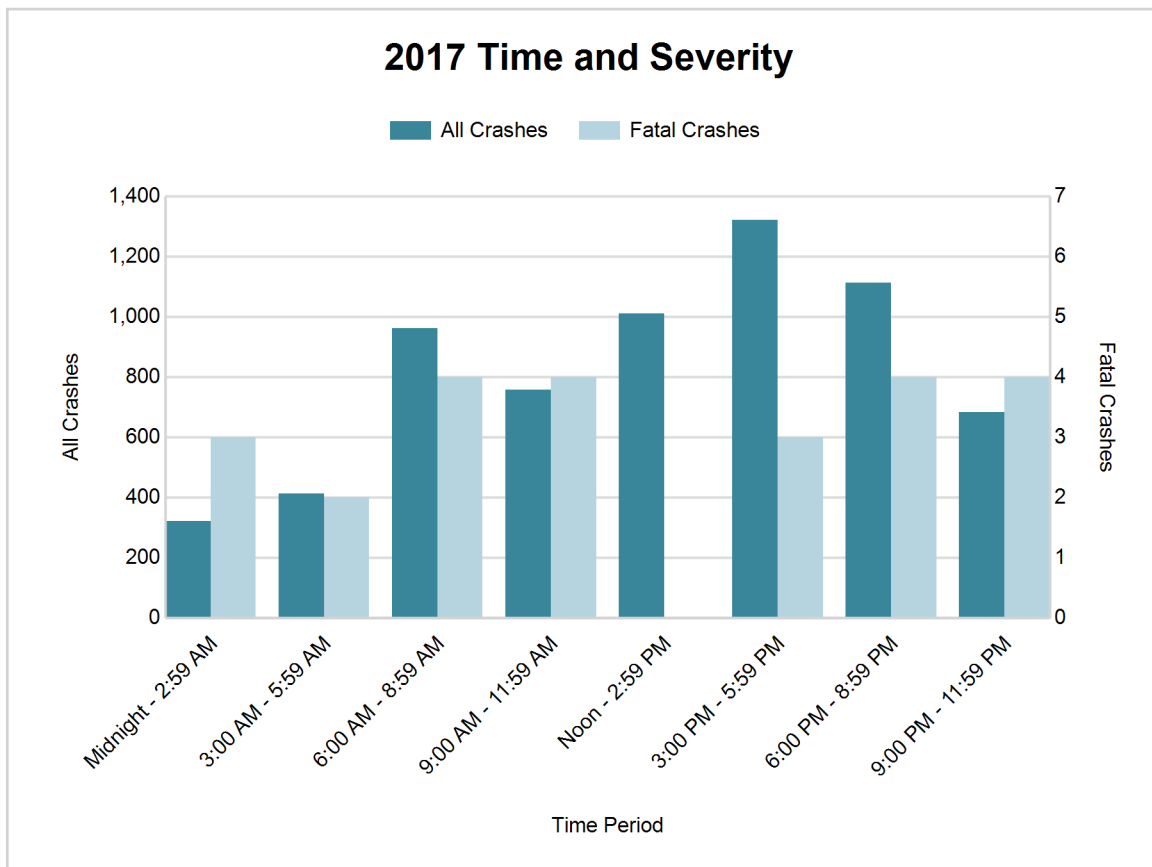
Time of Day	2013		2014		2015		2016		2017	
	Total Crashes	Fatal Crashes	Total Crashes	Fatal Crashes	Total Crashes	Fatal Crashes	Total Crashes	Fatal Crashes	Total Crashes	Fatal Crashes
Midnight - 2:59 AM	380	4	329	3	318	1	328	3	322	3
3:00 AM - 5:59 AM	474	2	450	0	451	4	421	2	412	2
6:00 AM - 8:59 AM	1,035	1	1,028	2	1,032	3	1,009	3	961	4
9:00 AM - 11:59 AM	670	1	737	4	742	3	778	4	758	4
Noon - 2:59 PM	964	0	1,069	5	1,028	7	1,082	3	1,011	0
3:00 PM - 5:59 PM	1,222 †	6	1,243 †	1	1,368 †	3	1,383 †	6	1,322 †	3
6:00 PM - 8:59 PM	990	2	1,045	6	1,168	2	1,227	6	1,112	4
9:00 PM - 11:59 PM	732	5	716	5	698	3	676	3	682	4
Unknown	3	1	2	0	1	0	0	0	0	0
<b>Total</b>	<b>6,470</b>	<b>22</b>	<b>6,619</b>	<b>26</b>	<b>6,806</b>	<b>26</b>	<b>6,904</b>	<b>30</b>	<b>6,580</b>	<b>24</b>

Note: † Indicates that the highest number of total crashes reported in the 5-year period occurred in the same time period



## 2017 - Time and Severity

Time of Day	All Crashes		Fatal Crashes		Injury Crashes			PDO Crashes
	Number	% of Total	Number	% of Fatal	A	B	C	Number
Midnight - 2:59 AM	322	4.9	3	12.5	10	27	15	267
3:00 AM - 5:59 AM	412	6.3	2	8.3	9	12	29	360
6:00 AM - 8:59 AM	961	14.6	4	16.7	10	40	64	843
9:00 AM - 11:59 AM	758	11.5	4	16.7	12	50	89	603
Noon - 2:59 PM	1,011	15.4	0	0.0	22	88	113	788
3:00 PM - 5:59 PM	1,322	20.1	3	12.5	28	104	164	1,023
6:00 PM - 8:59 PM	1,112	16.9	4	16.7	19	59	79	951
9:00 PM - 11:59 PM	682	10.4	4	16.7	14	40	49	575
Unknown	0	0.0	0	0.0	0	0	0	0
<b>Total</b>	<b>6,580</b>	<b>100.0</b>	<b>24</b>	<b>100.0</b>	<b>124</b>	<b>420</b>	<b>602</b>	<b>5,410</b>

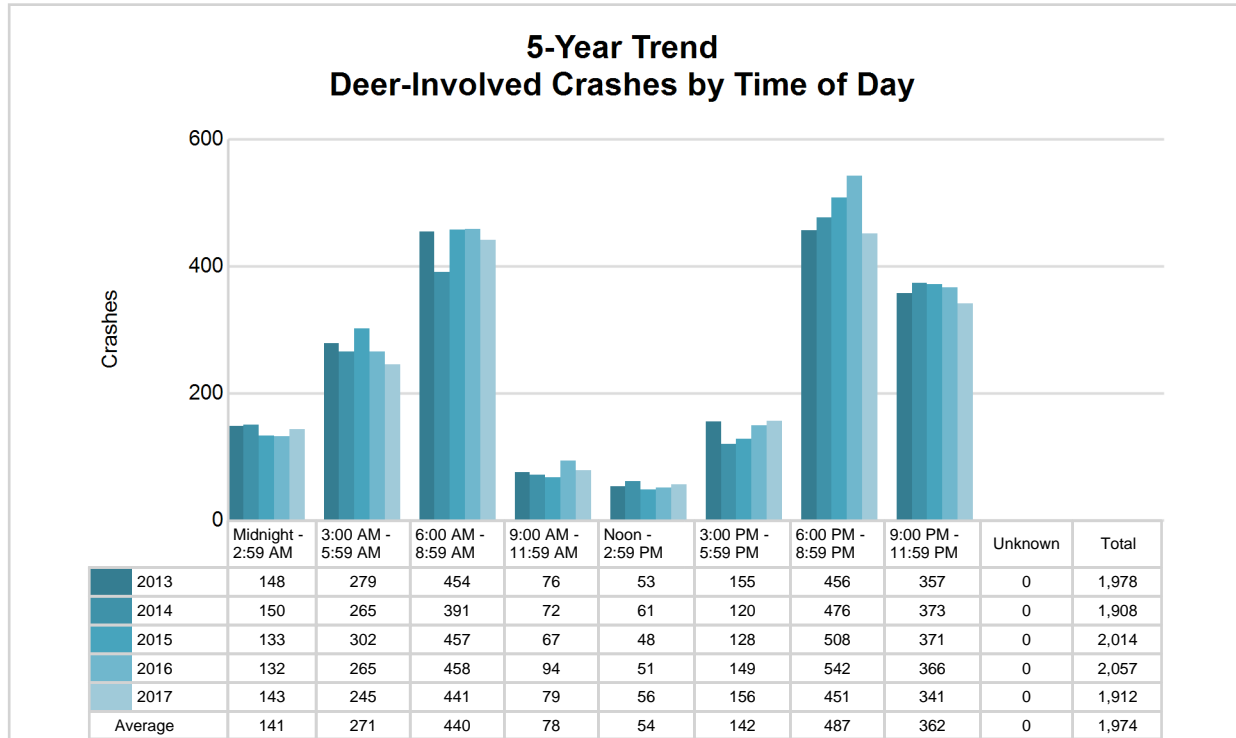


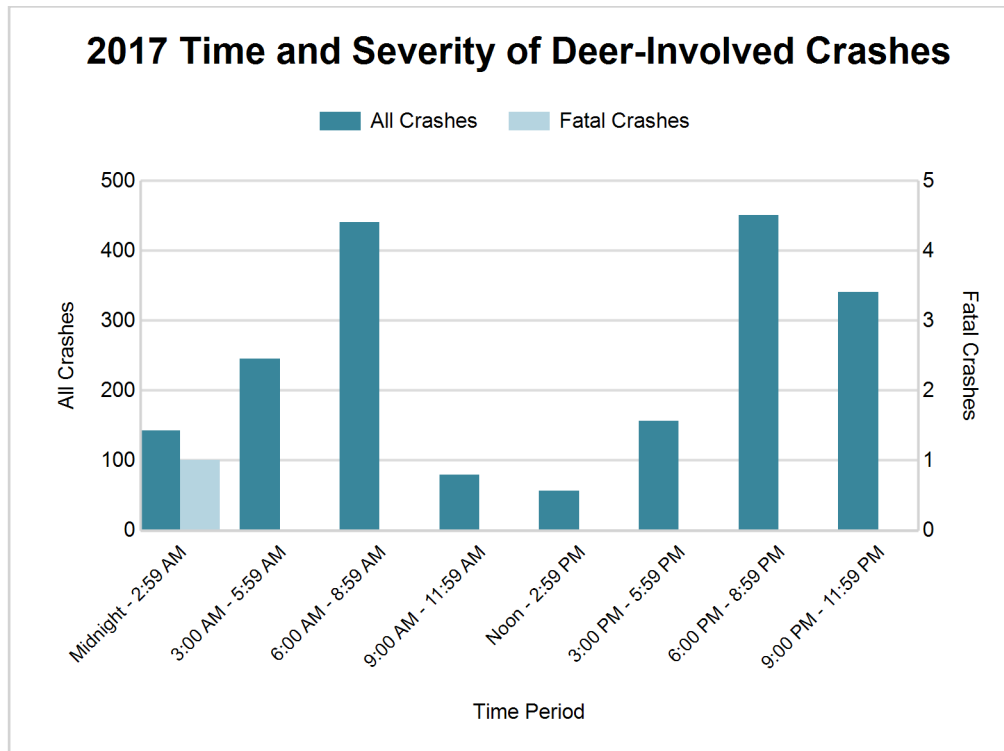
# MSP Post 34 - Lapeer (continued)

## 5-Year Trend - Deer-Involved Crashes by Time of Day

Time of Day	2013		2014		2015		2016		2017	
	Total Crashes	Fatal Crashes	Total Crashes	Fatal Crashes	Total Crashes	Fatal Crashes	Total Crashes	Fatal Crashes	Total Crashes	Fatal Crashes
Midnight - 2:59 AM	148	0	150	0	133	0	132	0	143	1
3:00 AM - 5:59 AM	279	0	265	0	302	0	265	0	245	0
6:00 AM - 8:59 AM	454	0	391	0	457	0	458	0	441	0
9:00 AM - 11:59 AM	76	0	72	0	67	0	94	0	79	0
Noon - 2:59 PM	53	0	61	0	48	0	51	0	56	0
3:00 PM - 5:59 PM	155	0	120	0	128	0	149	0	156	0
6:00 PM - 8:59 PM	456 †	0	476 †	0	508 †	0	542 †	0	451 †	0
9:00 PM - 11:59 PM	357	0	373	0	371	0	366	2	341	0
Unknown	0	0	0	0	0	0	0	0	0	0
<b>Total</b>	<b>1,978</b>	<b>0</b>	<b>1,908</b>	<b>0</b>	<b>2,014</b>	<b>0</b>	<b>2,057</b>	<b>2</b>	<b>1,912</b>	<b>1</b>

Note: † Indicates that the highest number of total crashes reported in the 5-year period occurred in the same time period





#### 2017 - Reported Motor Vehicle Crashes by County

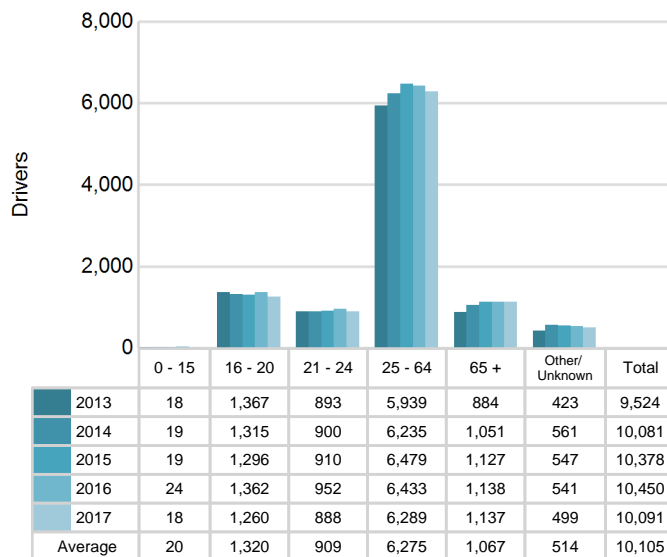
County	Crashes											Persons	
	Total	Fatal	Injury	Property Damage	Inter-state	US Route	State Route	Local Street	Alcohol-Involved	Drug-Involved	Deer-Involved	Fatalities	Injuries
Lapeer	2,875	11	423	2,441	192	0	839	1,841	100	39	1,185	11	594
St. Clair	3,705	13	723	2,969	797	0	680	2,218	164	46	727	14	1,002
<b>Total</b>	<b>6,580</b>	<b>24</b>	<b>1,146</b>	<b>5,410</b>	<b>989</b>	<b>0</b>	<b>1,519</b>	<b>4,059</b>	<b>264</b>	<b>85</b>	<b>1,912</b>	<b>25</b>	<b>1,596</b>

# MSP Post 34 - Lapeer (continued)

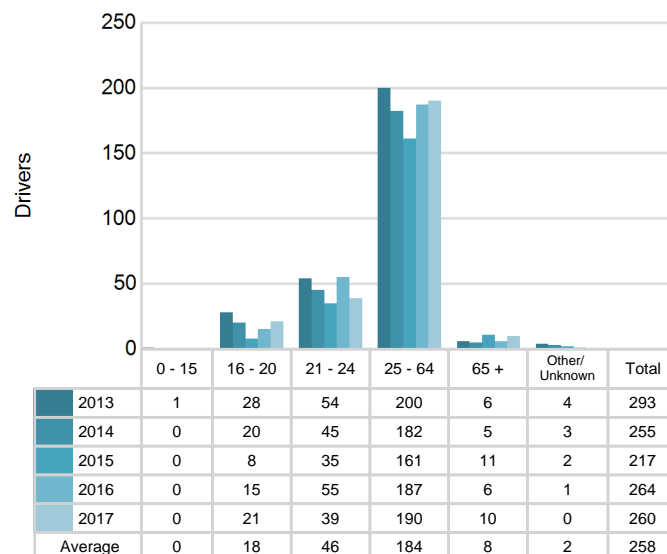
## 5-Year Trend - Drivers in Crashes Coded Drinking by Driver Age

Driver Age	2013		2014		2015		2016		2017	
	Total Drivers in Crashes	Total Drivers Coded Drinking	Total Drivers in Crashes	Total Drivers Coded Drinking	Total Drivers in Crashes	Total Drivers Coded Drinking	Total Drivers in Crashes	Total Drivers Coded Drinking	Total Drivers in Crashes	Total Drivers Coded Drinking
0 - 15	18	1	19	0	19	0	24	0	18	0
16 - 20	1,367	28	1,315	20	1,296	8	1,362	15	1,260	21
21 - 24	893	54	900	45	910	35	952	55	888	39
25 - 64	5,939	200	6,235	182	6,479	161	6,433	187	6,289	190
65 +	884	6	1,051	5	1,127	11	1,138	6	1,137	10
Unknown	423	4	561	3	547	2	541	1	499	0
<b>Total</b>	<b>9,524</b>	<b>293</b>	<b>10,081</b>	<b>255</b>	<b>10,378</b>	<b>217</b>	<b>10,450</b>	<b>264</b>	<b>10,091</b>	<b>260</b>

**5-Year Trend  
Total Drivers in Crashes by Age**



**5-Year Trend  
Total Drivers Coded Drinking by Age**



### 2017 - Bodily Alcohol Concentration (BAC) Results Among All Vehicle Drivers in Alcohol-Involved Crashes by Age

Age Group	Drivers				BAC Result Range for Drivers Coded Drinking				
	Total Drivers in Alcohol-Involved Crashes	Total Drivers Tested in all Crashes	Total Drivers Coded Drinking, Tested	Total Drivers Coded Drinking	BAC = 0.00	BAC 0.01 g/dL to 0.07 g/dL	BAC 0.08 g/dL to 0.16 g/dL	BAC 0.17 g/dL and Above	BAC Not Reported
0 - 15	0	0	0	0	0	0	0	0	0
16 - 20	31	28	20	21	0	2	7	2	10
21 - 24	45	34	27	39	0	1	7	6	25
25 - 64	250	187	143	190	1	9	41	30	109
65 +	16	13	9	10	0	3	1	1	5
Unknown	17	0	0	0	0	0	0	0	0
<b>Total</b>	<b>359</b>	<b>262</b>	<b>199</b>	<b>260</b>	<b>1</b>	<b>15</b>	<b>56</b>	<b>39</b>	<b>149</b>

Notes: BAC measured in grams (g) per deciliter (dL).

BAC may not be reported if drivers are not tested or if the results are not available immediately (as in the case of a blood test).

A driver may be coded by the officer as drinking even though no test is administered.

### Alcohol-Involved Crashes

In 2017, there were 359 drivers in alcohol-involved crashes; 260 (72.4%) of those drivers were coded as had-been-drinking by the officer on the crash form.

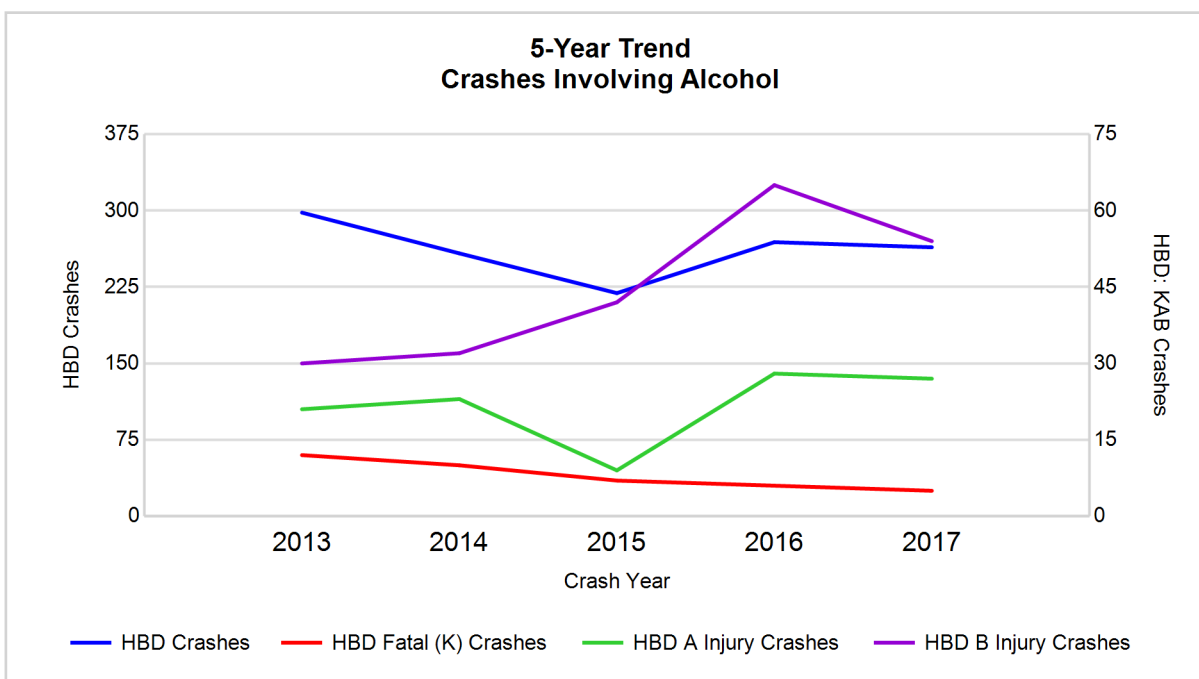
- 95 (36.5%) of the 260 drivers had a blood alcohol concentration (BAC) of 0.08 g/dL (grams per deciliter) or greater, and 39 (41.1%) of the 95 drivers had a BAC at or above 0.17 g/dL.
- 199 (76.5%) of the 260 drivers were coded as had-been-drinking and were tested for alcohol consumption.

### 5-Year Trend - Crashes Involving Alcohol

Year	All Crashes	HBD Crashes	% HBD	Fatal Crashes	HBD Fatal Crashes	% HBD	A Injury Crashes	HBD A Injury Crashes	% HBD	B Injury Crashes	HBD B Injury Crashes	% HBD
2013	6,470	298	4.6	22	12	54.5	100	21	21.0	260	30	11.5
2014	6,619	258	3.9	26	10	38.5	110	23	20.9	256	32	12.5
2015	6,806	219	3.2	26	7	26.9	85	9	10.6	290	42	14.5
2016	6,904	269	3.9	30	6	20.0	120	28	23.3	428	65	15.2
2017	6,580	264	4.0	24	5*	20.8	124**	27	21.8	420	54	12.9

Note: \* Indicates that the most recent year is the lowest number or percentage reported in the 5-year period in that column

\*\* Indicates that the most recent year is the highest number or percentage reported in the 5-year period in that column



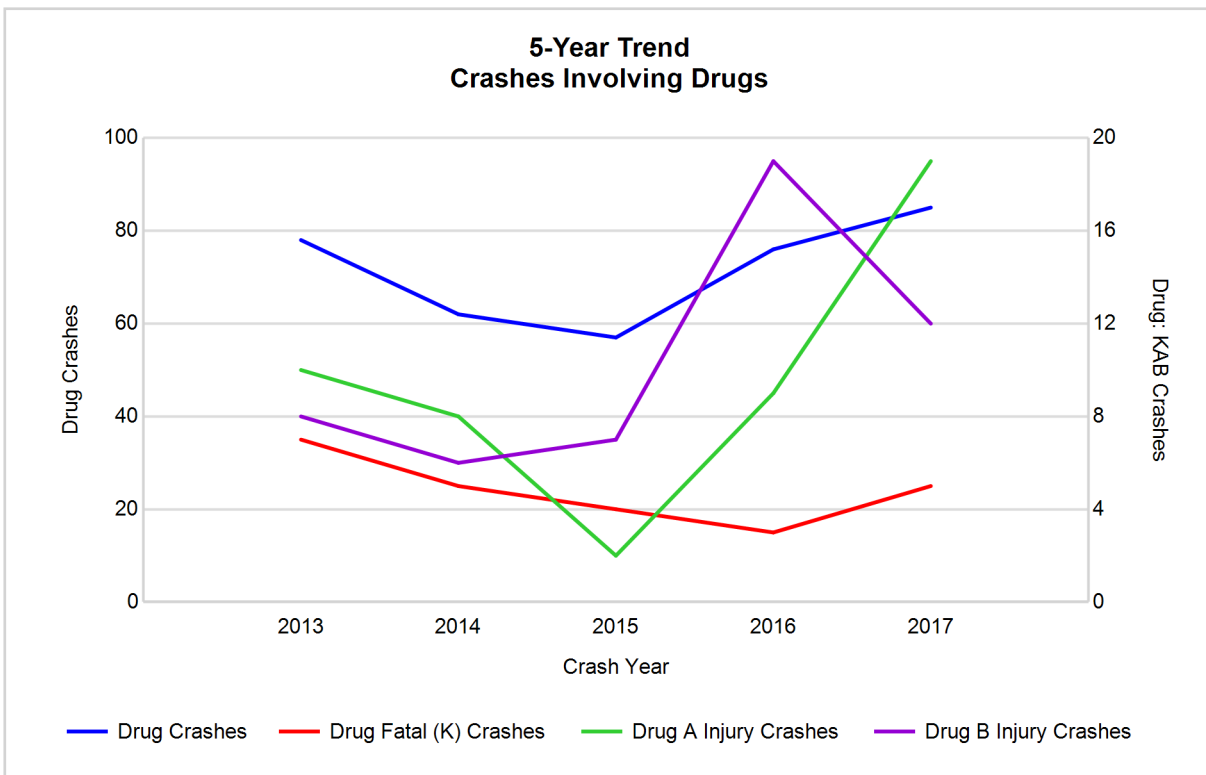
Note: Had-Been-Drinking (HBD)

## 5-Year Trend - Crashes Involving Drugs

Year	All Crashes	Drug Crashes	% Drug	Fatal Crashes	Drug Fatal Crashes	% Drug	A Injury Crashes	Drug A Injury Crashes	% Drug	B Injury Crashes	Drug B Injury Crashes	% Drug
2013	6,470	78	1.2	22	7	31.8	100	10	10.0	260	8	3.1
2014	6,619	62	0.9	26	5	19.2	110	8	7.3	256	6	2.3
2015	6,806	57	0.8	26	4	15.4	85	2	2.4	290	7	2.4
2016	6,904	76	1.1	30	3	10.0	120	9	7.5	428	19	4.4
2017	6,580	85**	1.3**	24	5	20.8	124**	19**	15.3**	420	12	2.9

Note: \* Indicates that the most recent year is the lowest number or percentage reported in the 5-year period in that column

\*\* Indicates that the most recent year is the highest number or percentage reported in the 5-year period in that column

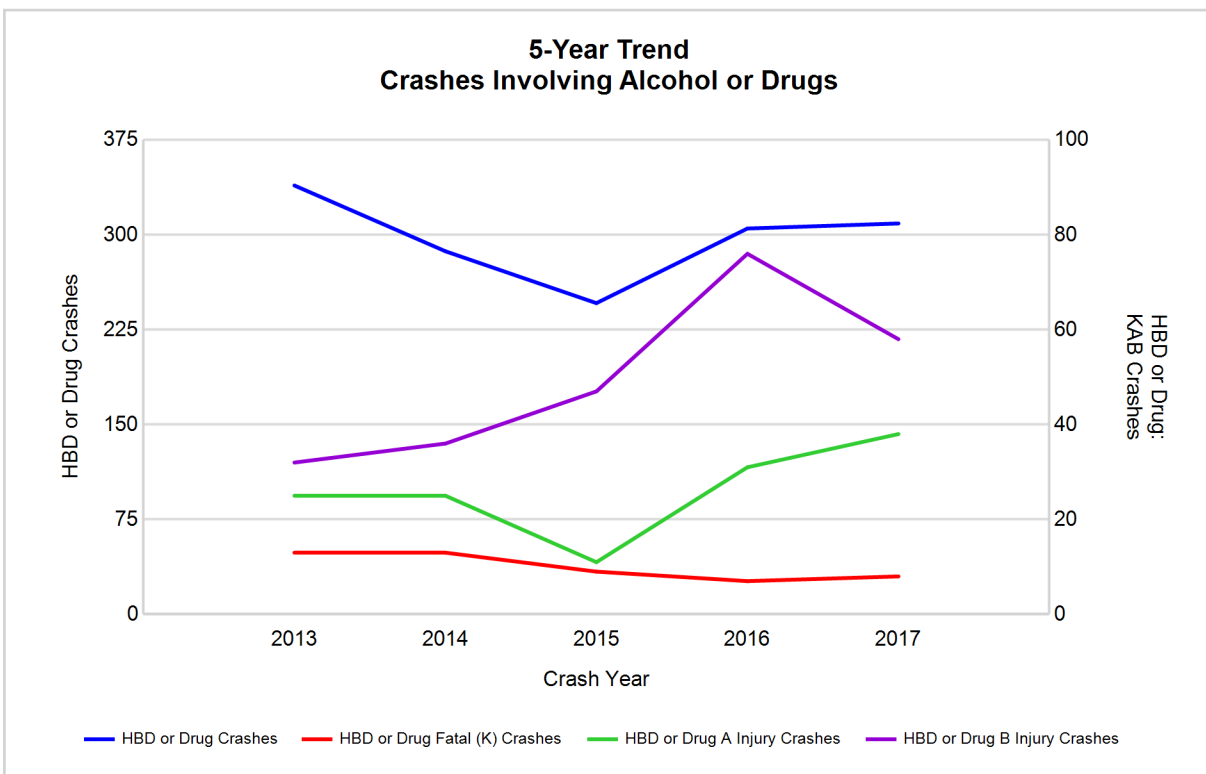


## 5-Year Trend - Crashes Involving Alcohol or Drugs

Year	All Crashes	HBD or Drug Crashes	% HBD or Drug	Fatal Crashes	HBD or Drug Fatal Crashes	% HBD or Drug	A Injury Crashes	HBD or Drug A Injury Crashes	% HBD or Drug	B Injury Crashes	HBD or Drug B Injury Crashes	% HBD or Drug
2013	6,470	339	5.2	22	13	59.1	100	25	25.0	260	32	12.3
2014	6,619	287	4.3	26	13	50.0	110	25	22.7	256	36	14.1
2015	6,806	246	3.6	26	9	34.6	85	11	12.9	290	47	16.2
2016	6,904	305	4.4	30	7	23.3	120	31	25.8	428	76	17.8
2017	6,580	309	4.7	24	8	33.3	124**	38**	30.6**	420	58	13.8

Note: \* Indicates that the most recent year is the lowest number or percentage reported in the 5-year period in that column

\*\* Indicates that the most recent year is the highest number or percentage reported in the 5-year period in that column



Note: Had-Been-Drinking (HBD)

## 2017 - Restraints Worn Among Vehicle Drivers and Injured Passengers by Vehicle Type

Vehicle Type	Total Occupants			Fatalities			A - Suspected Serious			B - Suspected Minor			C - Possible Injury			No Injury		
	Total	Used Restraint	%	Total	Used Restraint	%	Total	Used Restraint	%	Total	Used Restraint	%	Total	Used Restraint	%	Total	Used Restraint	%
Passenger car, SUV, van	7,971	7,500	94.1	8	5	62.5	90	70	77.8	390	358	91.8	743	714	96.1	6,434	6,353	98.7
Motor home	19	18	94.7	0	0	0.0	0	0	0.0	1	1	100.0	2	2	100.0	15	15	100.0
Pickup truck	1,894	1,754	92.6	5	0	0.0	20	14	70.0	77	75	97.4	120	114	95.0	1,593	1,551	97.4
Small truck under 10,000 lbs. GVWR	81	78	96.3	0	0	0.0	1	0	0.0	1	1	100.0	8	7	87.5	71	70	98.6
Motorcycle	74	42	56.8	7	2	28.6	16	11	68.8	26	13	50.0	10	6	60.0	14	10	71.4
Moped / goped	7	2	28.6	1	1	100.0	4	1	25.0	2	0	0.0	0	0	0.0	0	0	0.0
Go-cart / golf cart	2	0	0.0	0	0	0.0	1	0	0.0	0	0	0.0	0	0	0.0	0	0	0.0
Snowmobile	1	1	100.0	0	0	0.0	0	0	0.0	1	1	100.0	0	0	0.0	0	0	0.0
Off-Road Vehicle - ORV / All-Terrain Vehicle - ATV	15	6	40.0	0	0	0.0	6	4	66.7	6	1	16.7	1	0	0.0	2	1	50.0
Other	47	27	57.4	0	0	0.0	1	0	0.0	1	0	0.0	1	1	100.0	31	26	83.9
Truck/bus over 10,000 lbs.	254	231	90.9	0	0	0.0	3	3	100.0	4	4	100.0	10	8	80.0	224	216	96.4
Unknown	106	0	0.0	0	0	0.0	0	0	0.0	0	0	0.0	0	0	0.0	0	0	0.0
<b>Total</b>	<b>10,471</b>	<b>9,659</b>	<b>92.2</b>	<b>21</b>	<b>8</b>	<b>38.1</b>	<b>142</b>	<b>103</b>	<b>72.5</b>	<b>509</b>	<b>454</b>	<b>89.2</b>	<b>895</b>	<b>852</b>	<b>95.2</b>	<b>8,384</b>	<b>8,242</b>	<b>98.3</b>

Note: Restraint Use includes shoulder belt only used, lap belt only used, both lap and shoulder belts used, child restraint used, restraint failure, and helmet worn.

## 2017 - Restraints Worn Among Vehicle Drivers and Injured Passengers by Age

Age Group	Total Occupants			Fatalities			A - Suspected Serious			B - Suspected Minor			C - Possible Injury			No Injury		
	Total	Used Restraint	%	Total	Used Restraint	%	Total	Used Restraint	%	Total	Used Restraint	%	Total	Used Restraint	%	Total	Used Restraint	%
0 - 15	128	122	95.3	0	0	0.0	5	4	80.0	27	25	92.6	83	82	98.8	13	11	84.6
16 - 20	1,332	1,298	97.4	2	1	50.0	17	10	58.8	89	79	88.8	134	126	94.0	1,089	1,082	99.4
21 - 24	921	880	95.5	2	0	0.0	16	12	75.0	49	40	81.6	71	61	85.9	783	767	98.0
25 - 64	6,411	6,195	96.6	13	5	38.5	87	62	71.3	282	249	88.3	487	465	95.5	5,525	5,414	98.0
65 +	1,180	1,164	98.6	4	2	50.0	17	15	88.2	62	61	98.4	120	118	98.3	974	968	99.4
Unknown	499	0	0.0	0	0	0.0	0	0	0.0	0	0	0.0	0	0	0.0	0	0	0.0
<b>Total</b>	<b>10,471</b>	<b>9,659</b>	<b>92.2</b>	<b>21</b>	<b>8</b>	<b>38.1</b>	<b>142</b>	<b>103</b>	<b>72.5</b>	<b>509</b>	<b>454</b>	<b>89.2</b>	<b>895</b>	<b>852</b>	<b>95.2</b>	<b>8,384</b>	<b>8,242</b>	<b>98.3</b>

Note: Restraint Use includes shoulder belt only used, lap belt only used, both lap and shoulder belts used, child restraint used, restraint failure, and helmet worn.

## 5-Year Trend - Restraint Use Among Drivers

Restraint Use	2013			2014			2015			2016			2017		
	Drivers	Fatal Drivers	Injured Drivers	Drivers	Fatal Drivers	Injured Drivers	Drivers	Fatal Drivers	Injured Drivers	Drivers	Fatal Drivers	Injured Drivers	Drivers	Fatal Drivers	Injured Drivers
No belts available	68	0	5	66	0	8	49	0	12	10	0	2	8	0	2
Shoulder belt only used	14	0	1	20	0	1	21	0	2	7	0	0	12	0	2
Lap belt only used	40	0	4	44	0	9	43	0	8	13	0	1	11	0	3
Both lap & shoulder belts used	8,643	4	968	9,053	6	919	9,358	7	941	9,514	10	1,131	9,248	4	1,031
No belts used	93	5	31	81	4	35	88	1	36	77	8	39	68	6	39
Child restraint used	0	0	0	0	0	0	0	0	0	0	0	0	0	0	0
Child restraint not used, unavailable or improper use	0	0	0	0	0	0	0	0	0	0	0	0	0	0	0
Restraint failure	1	0	0	2	0	0	0	0	0	0	0	0	0	0	0
Restraint use unknown	152	1	29	192	1	28	345	0	27	600	1	30	445	2	24
Helmet worn	65	2	40	63	4	44	69	4	48	80	0	68	50	3	36
Helmet not worn	38	3	30	40	5	25	31	2	23	40	2	31	39	4	31
Helmet use unknown	4	0	2	8	0	4	9	0	5	7	1	3	1	0	0
Uncoded & errors	406	0	0	512	0	1	365	0	0	102	0	0	209	0	0
<b>Total</b>	<b>9,524</b>	<b>15</b>	<b>1,110</b>	<b>10,081</b>	<b>20</b>	<b>1,074</b>	<b>10,378</b>	<b>14</b>	<b>1,102</b>	<b>10,450</b>	<b>22</b>	<b>1,305</b>	<b>10,091</b>	<b>19</b>	<b>1,168</b>

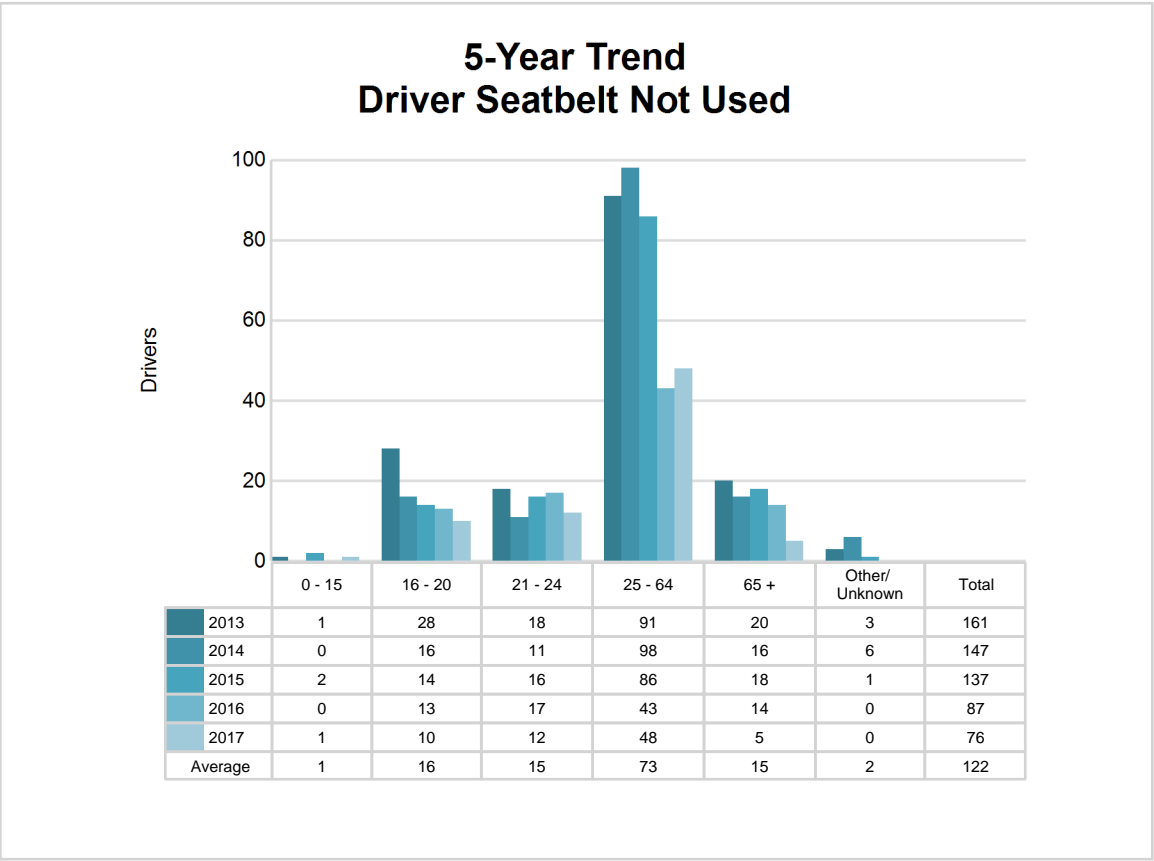
## 5-Year Trend - Restraint Use Among Drivers Coded Drinking

Restraint Use	2013			2014			2015			2016			2017		
	Drivers	Fatal Drivers	Injured Drivers	Drivers	Fatal Drivers	Injured Drivers	Drivers	Fatal Drivers	Injured Drivers	Drivers	Fatal Drivers	Injured Drivers	Drivers	Fatal Drivers	Injured Drivers
No belts available	2	0	1	2	0	1	3	0	3	0	0	0	0	0	0
Shoulder belt only used	1	0	0	0	0	0	2	0	0	0	0	0	0	0	0
Lap belt only used	0	0	0	1	0	0	2	0	2	1	0	0	0	0	0
Both lap & shoulder belts used	217	0	58	175	1	51	140	1	36	175	0	68	182	0	58
No belts used	25	5	10	20	3	13	17	1	10	22	2	18	24	1	19
Child restraint used	0	0	0	0	0	0	0	0	0	0	0	0	0	0	0
Child restraint not used, unavailable or improper use	0	0	0	0	0	0	0	0	0	0	0	0	0	0	0
Restraint failure	0	0	0	0	0	0	0	0	0	0	0	0	0	0	0
Restraint use unknown	39	1	9	45	0	11	38	0	10	48	0	17	39	1	11
Helmet worn	3	0	3	3	1	2	6	2	3	7	0	7	7	0	6
Helmet not worn	4	1	2	7	2	5	6	2	3	10	0	9	8	2	5
Helmet use unknown	0	0	0	0	0	0	1	0	1	1	1	0	0	0	0
Uncoded & errors	2	0	0	2	0	0	2	0	0	0	0	0	0	0	0
<b>Total</b>	<b>293</b>	<b>7</b>	<b>83</b>	<b>255</b>	<b>7</b>	<b>83</b>	<b>217</b>	<b>6</b>	<b>68</b>	<b>264</b>	<b>3</b>	<b>119</b>	<b>260</b>	<b>4</b>	<b>99</b>

5-Year Trend - Seatbelt Not Used Among Drivers by Age

Age Group	2013			2014			2015			2016			2017		
	Drivers	Fatal Drivers	Injured Drivers	Drivers	Fatal Drivers	Injured Drivers	Drivers	Fatal Drivers	Injured Drivers	Drivers	Fatal Drivers	Injured Drivers	Drivers	Fatal Drivers	Injured Drivers
0 - 15	1	0	0	0	0	0	2	0	0	0	0	0	1	0	0
16 - 20	28	0	8	16	0	7	14	0	6	13	1	7	10	0	9
21 - 24	18	0	3	11	0	3	16	0	5	17	2	9	12	1	6
25 - 64	91	5	21	98	3	24	86	1	31	43	1	19	48	4	24
65 +	20	0	4	16	1	7	18	0	6	14	4	6	5	1	2
Unknown	3	0	0	6	0	2	1	0	0	0	0	0	0	0	0
Total	161	5	36	147	4	43	137	1	48	87	8	41	76	6	41

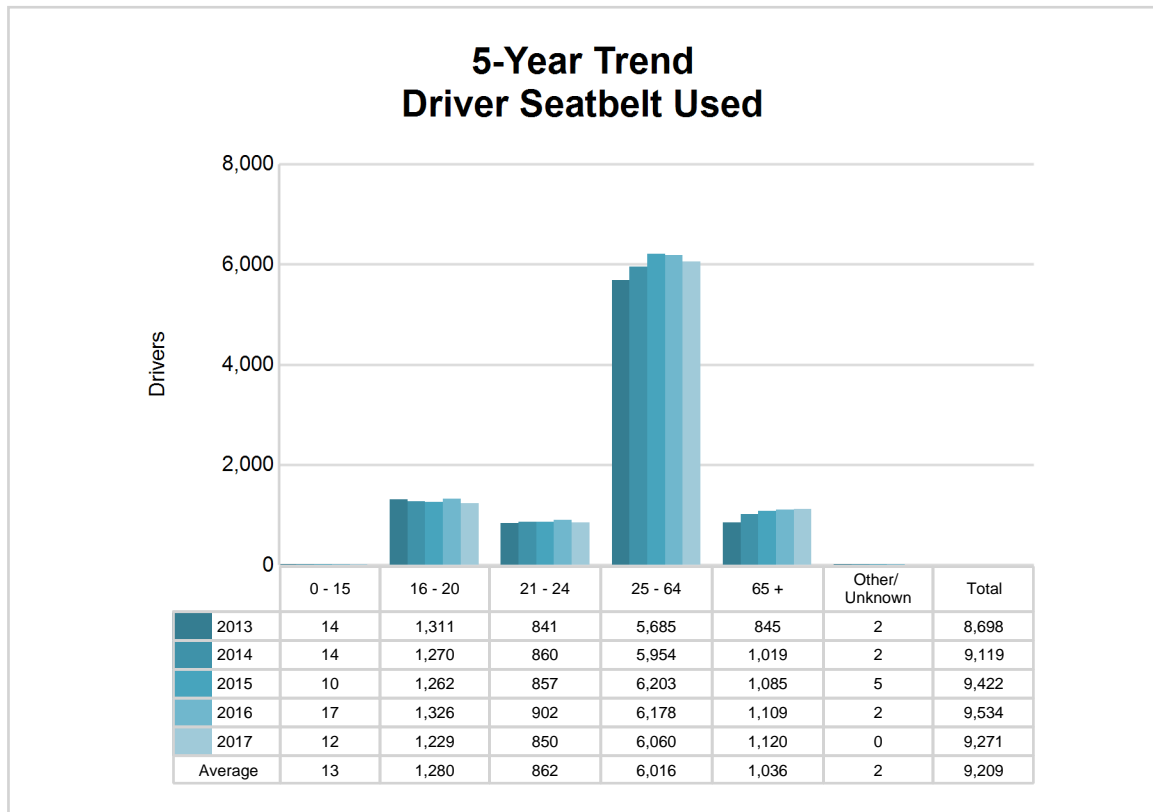
Note: Seatbelt Not Used includes no belts available or no belts used.



## 5-Year Trend - Seatbelt Used Among Drivers by Age

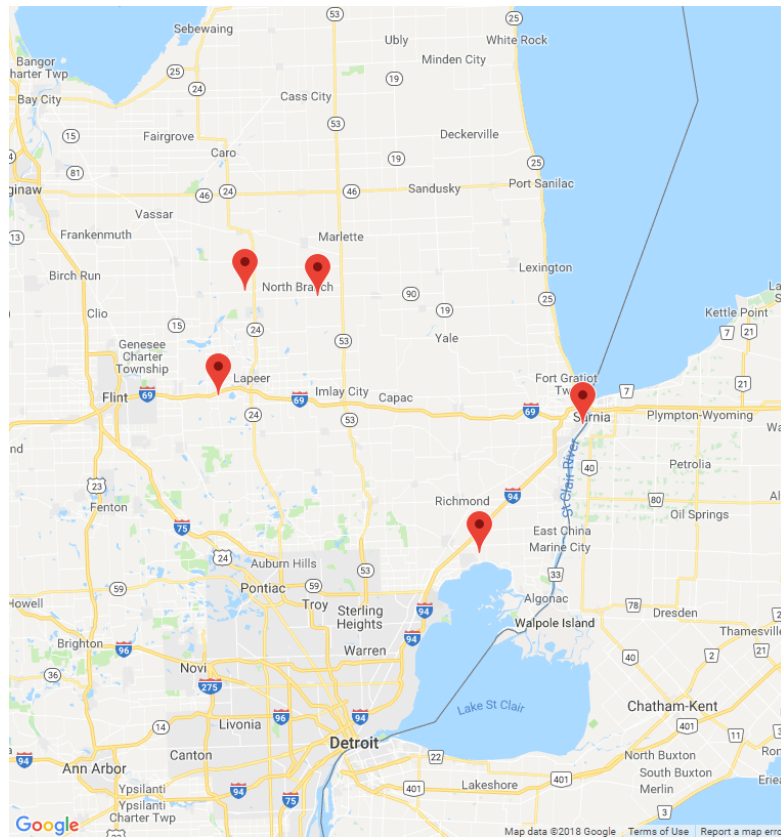
Age Group	2013			2014			2015			2016			2017		
	Drivers	Fatal Drivers	Injured Drivers	Drivers	Fatal Drivers	Injured Drivers	Drivers	Fatal Drivers	Injured Drivers	Drivers	Fatal Drivers	Injured Drivers	Drivers	Fatal Drivers	Injured Drivers
0 - 15	14	0	3	14	1	1	10	0	0	17	0	0	12	0	2
16 - 20	1,311	1	156	1,270	1	127	1,262	0	134	1,326	2	176	1,229	0	151
21 - 24	841	0	91	860	1	103	857	1	82	902	0	110	850	0	83
25 - 64	5,685	3	612	5,954	2	582	6,203	3	608	6,178	6	698	6,060	3	649
65 +	845	0	110	1,019	1	116	1,085	3	127	1,109	2	148	1,120	1	151
Unknown	2	0	1	2	0	0	5	0	0	2	0	0	0	0	0
<b>Total</b>	<b>8,698</b>	<b>4</b>	<b>973</b>	<b>9,119</b>	<b>6</b>	<b>929</b>	<b>9,422</b>	<b>7</b>	<b>951</b>	<b>9,534</b>	<b>10</b>	<b>1,132</b>	<b>9,271</b>	<b>4</b>	<b>1,036</b>

Note: Seatbelt Used includes shoulder belt only used, lap belt only used, both lap and shoulder belts used, and restraint failure.



## 5-Year Trend - Drivers in Crashes by Hazardous Action

Hazardous Action	2013		2014		2015		2016		2017	
	Total Drivers in Crashes	Drivers in Fatal Crashes	Total Drivers in Crashes	Drivers in Fatal Crashes	Total Drivers in Crashes	Drivers in Fatal Crashes	Total Drivers in Crashes	Drivers in Fatal Crashes	Total Drivers in Crashes	Drivers in Fatal Crashes
None	5,432	14	5,689	17	5,810	22	5,623	19	5,470	15
Speed too fast	774	6	729	6	746	2	699	8	622	2
Speed too slow	15	0	11	0	6	0	5	0	1	0
Failed to yield	798	5	877	5	950	6	893	3	901	1
Disregard traffic control	169	1	170	1	151	1	182	4	162	2
Drove wrong way	11	0	12	1	8	0	6	1	6	0
Drove left of center	69	1	66	2	77	3	86	2	72	2
Improper passing	50	0	52	0	52	0	60	0	55	0
Improper lane use	155	0	184	0	182	1	167	0	161	1
Improper turn	118	0	92	1	126	0	112	0	116	1
Improper/no signal	22	0	21	0	17	0	7	0	7	0
Improper backing	146	0	181	0	203	0	189	0	187	0
Unable to stop in assured clear distance	964	1	1,121	1	1,109	3	1,143	1	1,165	0
Other	382	1	415	6	357	2	354	1	331	2
Unknown	147	3	187	4	244	6	441	4	403	6
Reckless driving	61	2	47	1	51	3	40	1	48	1
Careless/negligent driving	208	0	219	0	200	0	222	2	183	2
Uncoded & errors	3	0	8	0	89	0	221	1	201	0
<b>Total</b>	<b>9,524</b>	<b>34</b>	<b>10,081</b>	<b>45</b>	<b>10,378</b>	<b>49</b>	<b>10,450</b>	<b>47</b>	<b>10,091</b>	<b>35</b>



The picture above represents all 2017 alcohol-involved fatal crashes in Post 34.

In 2017, there were 264 alcohol-involved crashes in Post 34:

- 5 K - Fatal Crashes
- 27 A - Suspected Serious Injury Crashes
- 54 B - Suspected Minor Injury Crashes
- 40 C - Possible Injury Crashes
- 138 O - Property Damage Only/No Injury Crashes

### Office of Highway Safety Planning

---

Physical Address:  
7150 Harris Drive  
Dimondale, Michigan 48821

Mailing Address:  
P.O. Box 30634  
Lansing, Michigan 48909

Phone: (517) 284-3112  
Fax: (517) 284-3151

Find us on the web:  
[MichiganTrafficCrashFacts.org](http://MichiganTrafficCrashFacts.org)

