



2017

**MTCF**  
Michigan Traffic  
Crash Facts

# Michigan Traffic Crash Facts

## Reporting Criteria

Please pay particular attention to the wording when interpreting the three levels of data gathered for this report.

### Crash

The Crash Level analyzes data related to crash events and returns one result per crash.

Examples: Time, weather, and location.

### Units

The Units Level analyzes the experience of the units in the crash and returns one result per vehicle, driver, pedestrian, bicyclist, or train.

Examples: Vehicle type, driver condition, and unit events.

### People

The People Level analyzes the experience of the people involved in the crash and returns one result per occupant/person/party.

Examples: Age, injury severity, and seat belt or helmet use.

### **KABCO Injury Indicator:**

K = Killed

A = Suspected Serious Injury

B = Suspected Minor Injury

C = Possible Injury

O = No Injury

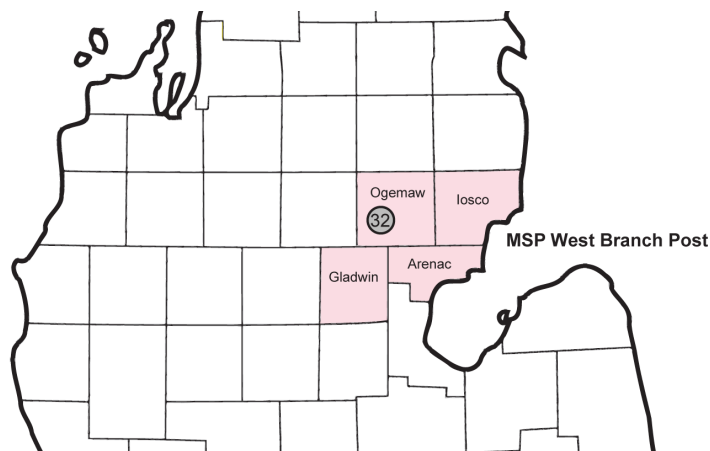
Property Damage Only (PDO)



## Michigan State Police (MSP) Post 32 - West Branch

### 2017 Traffic Crash Data & 2013-2017 5-Year Trends

Post 32 is comprised of Arenac, Gladwin, Iosco, and Ogemaw counties. Trend tables for this report are based on those counties.



### Sources:

The crashes in this report occurred on public roadways in Michigan and resulted in injuries, fatalities, or property damage (with \$1,000 as a reporting threshold). The information was gathered from Michigan Traffic Crash Report Forms (UD-10) submitted by local police departments, sheriff's offices, and the Michigan State Police. Other related information was obtained from the departments of Transportation, State, and Community Health.

This page left intentionally blank

## MSP Post 32 - West Branch

- There were 2,928 crashes in Post 32 during 2017. [Page 1]
- A total of 18 fatalities resulted from 17 fatal crashes in 2017 in Post 32. [Page 1]
- There were 551 injuries and 405 injury crashes. [Page 1]
- There were 2,506 property damage only crashes (no fatalities or injuries). [Page 1]
- November had the highest number of crashes (350). [Pages 1-2]
- June had the highest number of fatal crashes (3) while October and June had the highest number of fatalities (3). [Pages 1-2]
- September had the highest number of injury crashes (48) and injuries (64). [Page 1]
- November had the highest number of property damage only crashes (316). [Page 1]
- Of all vehicles involved in fatal crashes, 1 (3.8%) were motorcycles. [Page 1]
- Friday was the day of the week with the highest number of crashes (449) and Tuesday had the highest number of fatal crashes (4). [Pages 2-3]
- The 6:00 PM - 8:59 PM time period had the highest number of crashes (595). The 3:00 AM - 5:59 AM time period had the highest number of fatal crashes (5). [Pages 5-6]
- During the period from 2013 to 2017, the highest number of deer crashes occurred in 2013 (1,488). The 6:00 PM - 8:59 PM time period consistently had the highest number of deer-involved crashes during the five-year period. There were fatal crashes involving deer in 2017. [Pages 7-8]
- Ogemaw County (29.0%) had the highest number of crashes in Post 32 in 2017, followed by Gladwin County (26.2%), and Arenac County (25.2%). [Page 8]
- Arenac County (38.9%) had the highest number of fatalities in Post 32 in 2017, followed by Ogemaw County (27.8%), and Gladwin County and Iosco County (16.7%). [Page 8]
- The highest number of drivers in crashes (3,657) occurred during 2017 and the highest number of drivers coded drinking in crashes (136) occurred during 2017 within the five year period between 2013 and 2017. [Page 9]
- A total of 134 crashes involved alcohol in 2017. [Page 10]
- Alcohol-involved fatal crashes were the highest in 2017 during the five-year period from 2013 to 2017 at 6. [Page 10]
- A total of 23 crashes, 4 fatal crashes, and 4 suspected serious injury crashes involved drugs in 2017. [Page 11]
- There were 3,340 drivers wearing seatbelts and 69 drivers not wearing seatbelts in crashes in 2017. Of the 69 drivers not wearing seat belts, 2 (2.9%) were killed and 30 (43.5%) were injured. [Pages 14-16]
- The most common hazardous action coded for drivers in 2017 in all crashes was speed too fast (397), while the most common hazardous action coded for drivers in fatal crashes was speed too fast (6). [Page 17]

# MSP Post 32 - West Branch (continued)

## Post 32 Experience

In 2017:

There were 3,657 drivers involved in 2,928 motor vehicle crashes in MSP Post 32. Of those crashes, 17 were classified as fatal, resulting in 18 fatalities. An additional 551 persons were injured.

Post 32 experienced the highest number of motor vehicle crashes (350) in November, the highest number of fatal crashes (3) in June and the highest number of persons killed (3) in June and October.

Michigan driver statistics indicate 5.0 percent of licensed drivers in Post 32 were age 16-20, and 9.5 percent of drivers in crashes were also in that age group.

## 2017 - Crashes and Injuries by Month

Month	Crashes				Persons	
	Total	Fatal	Injury	Property Damage Only (PDO)	Fatalities	Injuries
January	233	1	31	201	1	44
February	183	0	30	153	0	36
March	218	2	30	186	2	47
April	174	2	21	151	2	30
May	183	0	36	147	0	41
June	220	3	35	182	3	47
July	263	2	35	226	2	48
August	199	1	33	165	1	49
September	251	0	48	203	0	64
October	311	2	35	274	3	43
November	350	2	32	316	2	48
December	343	2	39	302	2	54
<b>Total</b>	<b>2,928</b>	<b>17</b>	<b>405</b>	<b>2,506</b>	<b>18</b>	<b>551</b>

## 2017 - Driver Statistics

Age Group	Post 32			Driver Rates	
	2017 Population	Licensed Drivers	Drivers in Crashes	Per 10k Population	Per 10k Licensed
0 - 15	13,541	393	8	5.9	203.6
16 - 20	4,314	3,475	346	802.0	995.7
21 - 24	3,200	3,156	303	946.9	960.1
25 - 64	42,389	40,341	2,319	547.1	574.8
65 +	22,978	21,800	590	256.8	270.6
Unknown	0	0	91	--	--
<b>Total</b>	<b>86,422</b>	<b>69,165</b>	<b>3,657</b>	<b>423.2</b>	<b>528.7</b>

## 2017 - Vehicles in Crashes

Vehicle Type	Motor Vehicles		Fatal Crashes		Injury Crashes	PDO Crashes
	Number of Vehicles	% of Total	Number	% of Total	Number	Number
Passenger car, SUV, van	2,648	72.4	19	70.4	387	2,242
Motor home	14	0.4	0	0.0	3	11
Pickup truck	806	22.0	2	7.4	137	667
Small truck under 10,000 lbs. GVWR	31	0.8	1	3.7	2	28
Motorcycle	35	1.0	1	3.7	26	8
Moped / goped	2	0.1	0	0.0	2	0
Go-cart / golf cart	1	0.0	0	0.0	0	1
Snowmobile	3	0.1	1	3.7	2	0
Off-Road Vehicle - ORV / All-Terrain Vehicle - ATV	14	0.4	0	0.0	13	1
Other	14	0.4	1	3.7	5	8
Truck/bus over 10,000 lbs.	65	1.8	1	3.7	19	45
Unknown	24	0.7	1	3.7	2	21
<b>Total</b>	<b>3,657</b>	<b>100.0</b>	<b>27</b>	<b>100.0</b>	<b>598</b>	<b>3,032</b>

## 5-Year Trend - Crashes by Month

Month	2013		2014		2015		2016		2017	
	Total Crashes	Fatal Crashes	Total Crashes	Fatal Crashes	Total Crashes	Fatal Crashes	Total Crashes	Fatal Crashes	Total Crashes	Fatal Crashes
January	250	0	260	0	179	0	238	0	233	1
February	239	3	180	1	191	0	212	2	183	0
March	224	1	235	1	167	0	176	1	218	2
April	189	0	202	1	158	0	184	0	174	2
May	188	0	176	2	215	4	175	1	183	0
June	243	1	239	1	254	1	233	0	220	3
July	222	5	214	0	222	2	225	1	263	2
August	203	0	173	0	167	1	193	0	199	1
September	198	3	188	1	200	2	167	1	251	0
October	278	1	256	1	311	3	181	0	311	2
November	345 †	2	397 †	2	422 †	1	267 †	2	350 †	2
December	306	0	219	0	162	2	252	0	343	2
<b>Total</b>	<b>2,885</b>	<b>16</b>	<b>2,739</b>	<b>10</b>	<b>2,648</b>	<b>16</b>	<b>2,503</b>	<b>8</b>	<b>2,928</b>	<b>17</b>

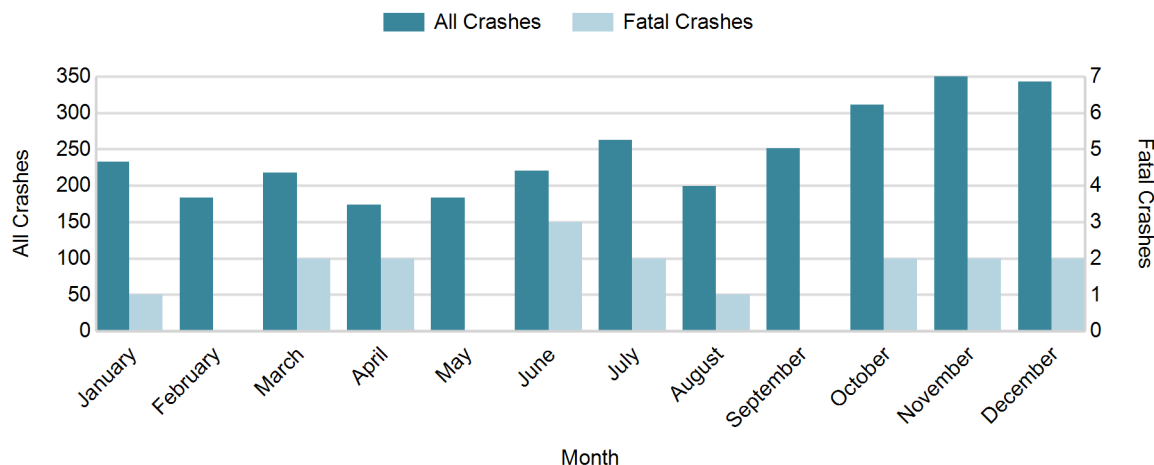
Note: † Indicates that the highest number of total crashes reported in the 5-year period occurred in the same month

## 5-Year Trend - Crashes by Day of Week

Day	2013		2014		2015		2016		2017	
	Total Crashes	Fatal Crashes	Total Crashes	Fatal Crashes	Total Crashes	Fatal Crashes	Total Crashes	Fatal Crashes	Total Crashes	Fatal Crashes
Monday	383	0	379	1	385	3	333	1	422	3
Tuesday	414	4	335	0	368	1	350	1	375	4
Wednesday	366	1	389	3	358	1	367	1	425	2
Thursday	424	0	418	1	365	0	364	1	432	3
Friday	450	2	493	1	468	6	425	1	449	1
Saturday	480	5	350	3	362	4	334	3	447	1
Sunday	368	4	375	1	342	1	330	0	378	3
<b>Total</b>	<b>2,885</b>	<b>16</b>	<b>2,739</b>	<b>10</b>	<b>2,648</b>	<b>16</b>	<b>2,503</b>	<b>8</b>	<b>2,928</b>	<b>17</b>

Note: † Indicates that the highest number of total crashes reported in the 5-year period occurred on the same day of the week

## 2017 Crashes by Month

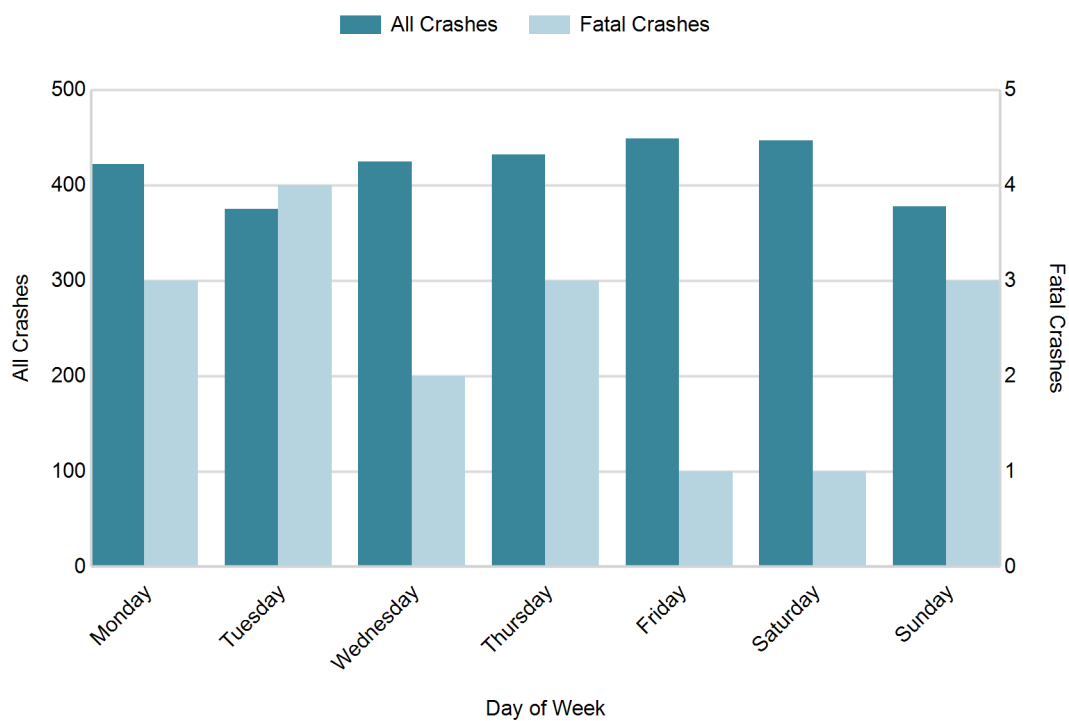


## MSP Post 32 - West Branch (continued)

### 2017 - Crashes by Day of Week

Day	All Crashes		Fatal Crashes		Injury Crashes			PDO Crashes
	Number	% of Total	Number	% of Fatal	A	B	C	Number
Monday	422	14.4	3	17.6	8	18	35	358
Tuesday	375	12.8	4	23.5	11	19	23	318
Wednesday	425	14.5	2	11.8	9	20	36	358
Thursday	432	14.8	3	17.6	13	19	32	365
Friday	449	15.3	1	5.9	7	19	19	403
Saturday	447	15.3	1	5.9	16	23	25	382
Sunday	378	12.9	3	17.6	9	22	22	322
<b>Total</b>	<b>2,928</b>	<b>100.0</b>	<b>17</b>	<b>100.0</b>	<b>73</b>	<b>140</b>	<b>192</b>	<b>2,506</b>

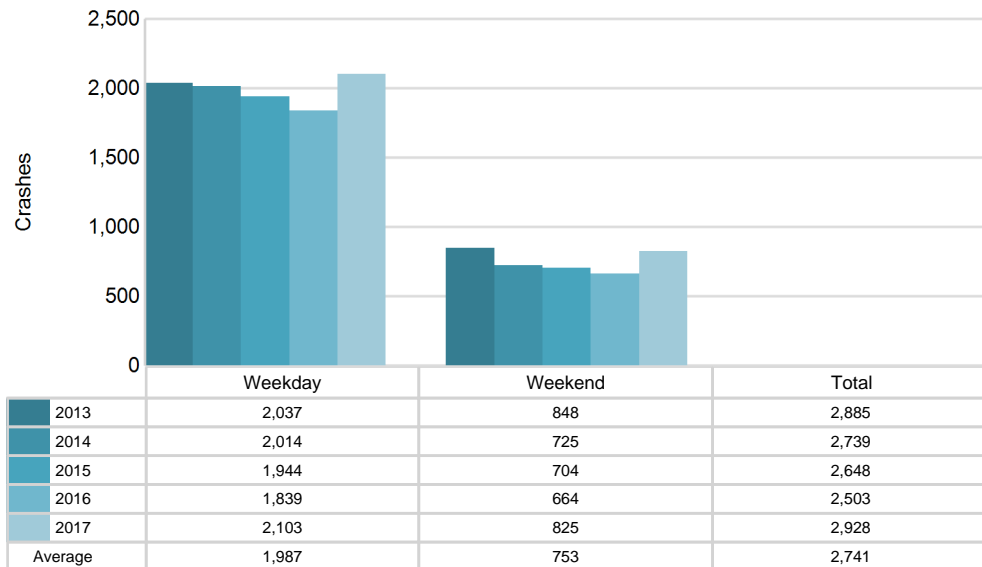
### 2017 Day of Week and Severity



## 5-Year Trend - Crashes by Weekday and Weekend

Portion of Week	2013		2014		2015		2016		2017	
	Total Crashes	Fatal Crashes	Total Crashes	Fatal Crashes	Total Crashes	Fatal Crashes	Total Crashes	Fatal Crashes	Total Crashes	Fatal Crashes
Weekday	2,037	7	2,014	6	1,944	11	1,839	5	2,103	13
Weekend	848	9	725	4	704	5	664	3	825	4
<b>Total</b>	<b>2,885</b>	<b>16</b>	<b>2,739</b>	<b>10</b>	<b>2,648</b>	<b>16</b>	<b>2,503</b>	<b>8</b>	<b>2,928</b>	<b>17</b>

## 5-Year Crash Trends by Weekday (Monday - Friday) and Weekend (Saturday & Sunday)

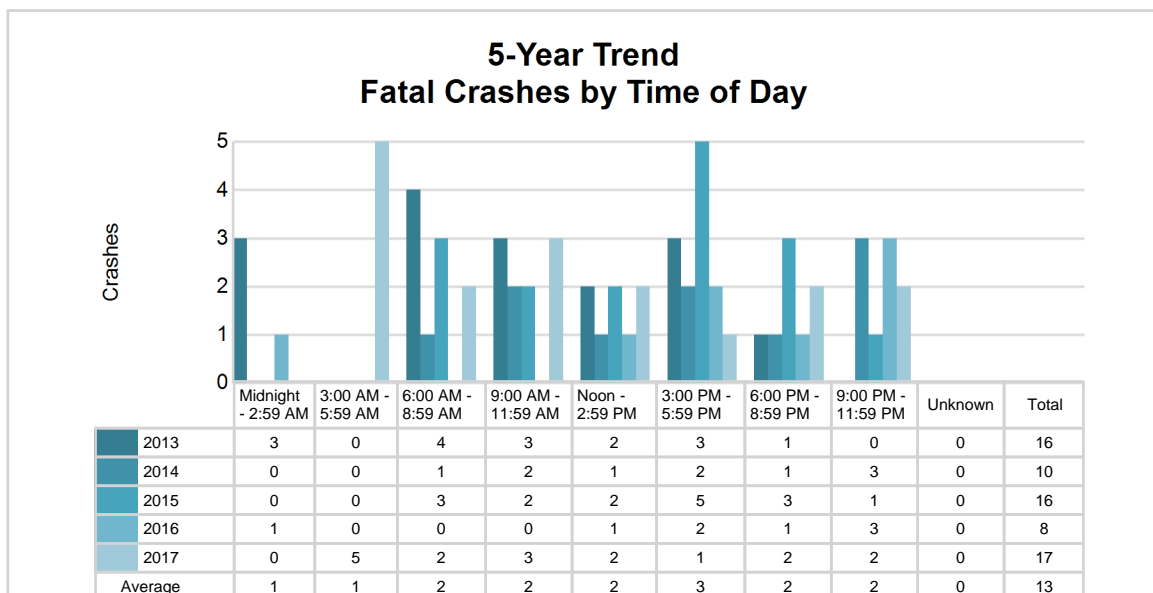
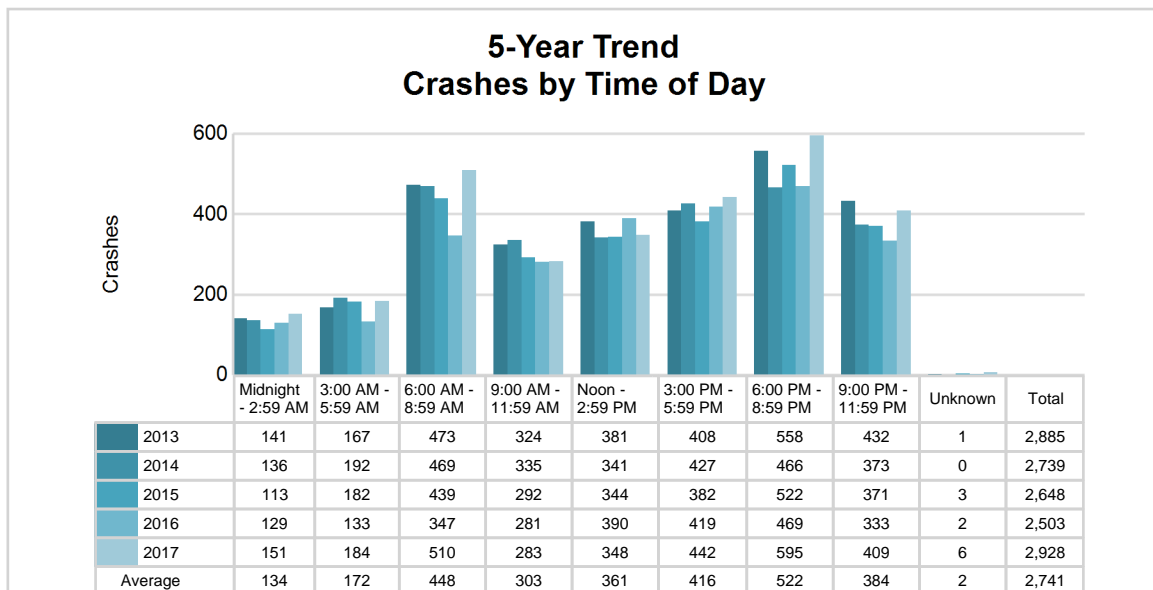


# MSP Post 32 - West Branch (continued)

## 5-Year Trend - Crashes by Time of Day

Time of Day	2013		2014		2015		2016		2017	
	Total Crashes	Fatal Crashes	Total Crashes	Fatal Crashes	Total Crashes	Fatal Crashes	Total Crashes	Fatal Crashes	Total Crashes	Fatal Crashes
Midnight - 2:59 AM	141	3	136	0	113	0	129	1	151	0
3:00 AM - 5:59 AM	167	0	192	0	182	0	133	0	184	5
6:00 AM - 8:59 AM	473	4	469	1	439	3	347	0	510	2
9:00 AM - 11:59 AM	324	3	335	2	292	2	281	0	283	3
Noon - 2:59 PM	381	2	341	1	344	2	390	1	348	2
3:00 PM - 5:59 PM	408	3	427	2	382	5	419	2	442	1
6:00 PM - 8:59 PM	558	1	466	1	522	3	469	1	595	2
9:00 PM - 11:59 PM	432	0	373	3	371	1	333	3	409	2
Unknown	1	0	0	0	3	0	2	0	6	0
<b>Total</b>	<b>2,885</b>	<b>16</b>	<b>2,739</b>	<b>10</b>	<b>2,648</b>	<b>16</b>	<b>2,503</b>	<b>8</b>	<b>2,928</b>	<b>17</b>

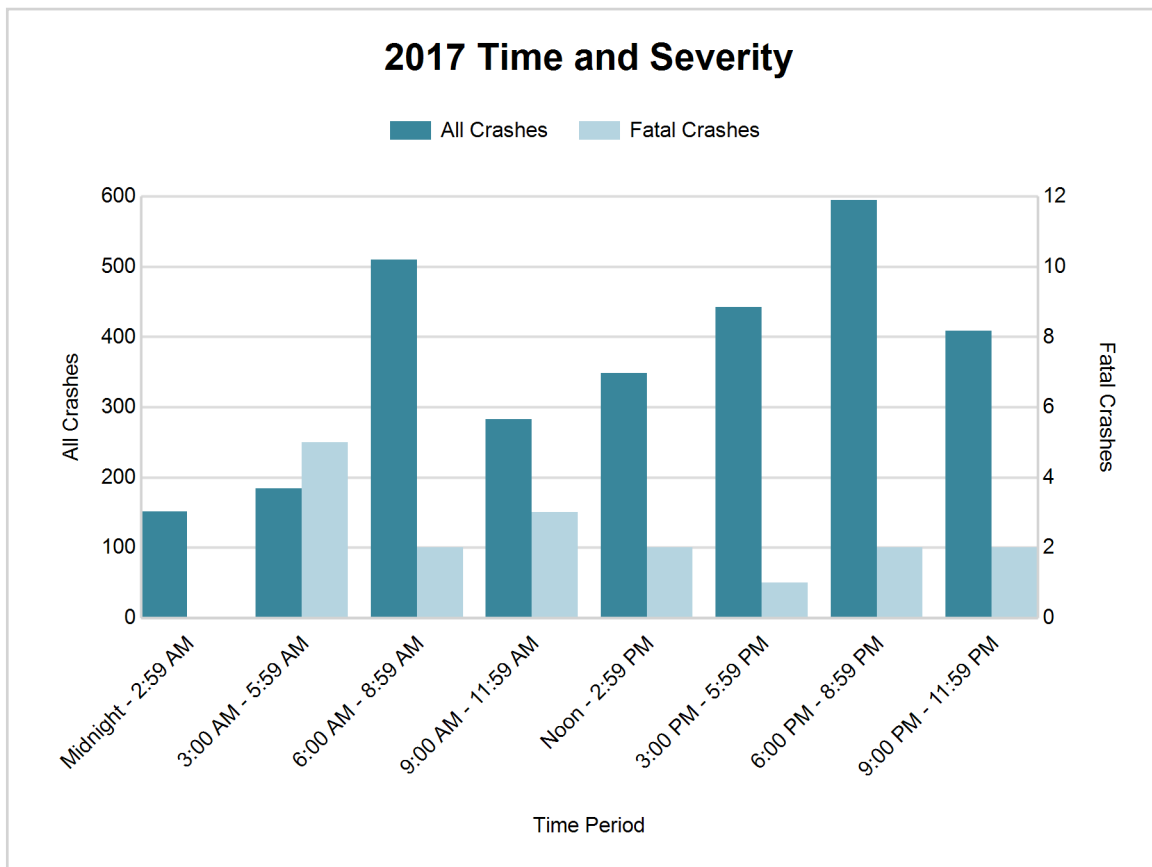
Note: † Indicates that the highest number of total crashes reported in the 5-year period occurred in the same time period





## 2017 - Time and Severity

Time of Day	All Crashes		Fatal Crashes		Injury Crashes			PDO Crashes
	Number	% of Total	Number	% of Fatal	A	B	C	Number
Midnight - 2:59 AM	151	5.2	0	0.0	5	12	12	122
3:00 AM - 5:59 AM	184	6.3	5	29.4	3	6	6	164
6:00 AM - 8:59 AM	510	17.4	2	11.8	8	15	24	461
9:00 AM - 11:59 AM	283	9.7	3	17.6	9	25	29	217
Noon - 2:59 PM	348	11.9	2	11.8	13	23	35	275
3:00 PM - 5:59 PM	442	15.1	1	5.9	17	23	48	353
6:00 PM - 8:59 PM	595	20.3	2	11.8	12	22	23	536
9:00 PM - 11:59 PM	409	14.0	2	11.8	6	14	15	372
Unknown	6	0.2	0	0.0	0	0	0	6
<b>Total</b>	<b>2,928</b>	<b>100.0</b>	<b>17</b>	<b>100.0</b>	<b>73</b>	<b>140</b>	<b>192</b>	<b>2,506</b>

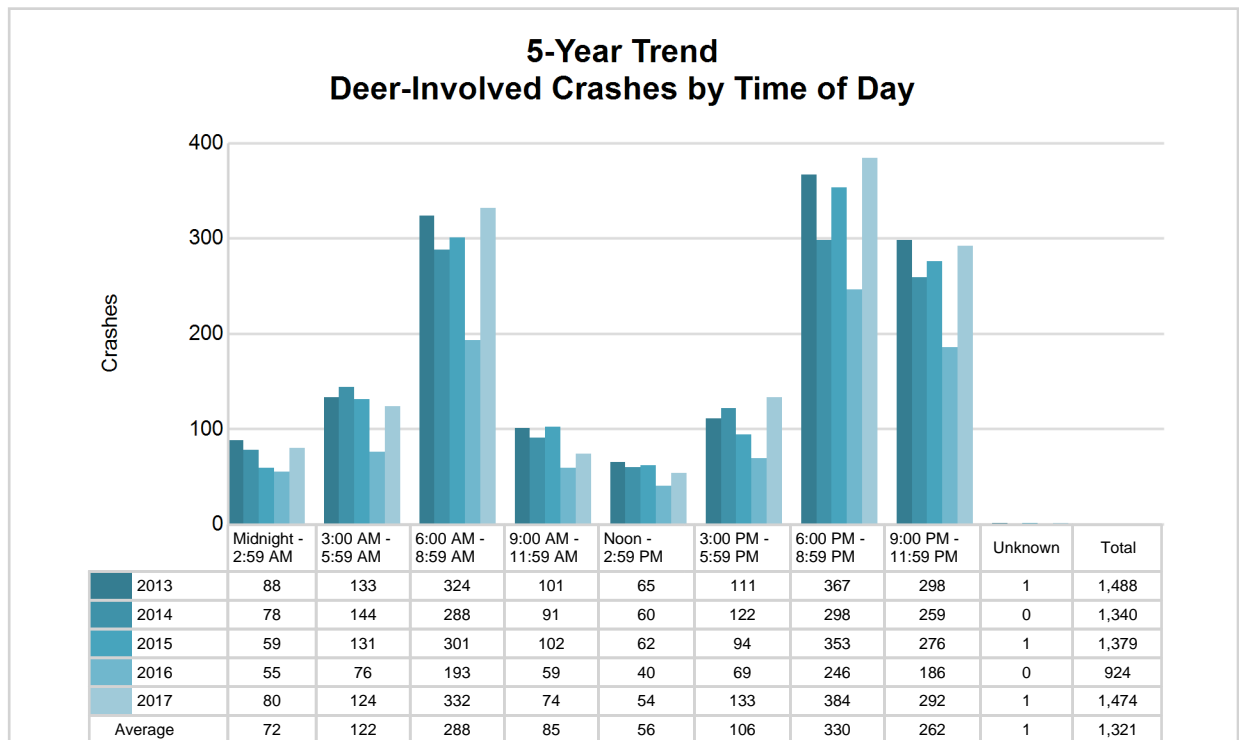


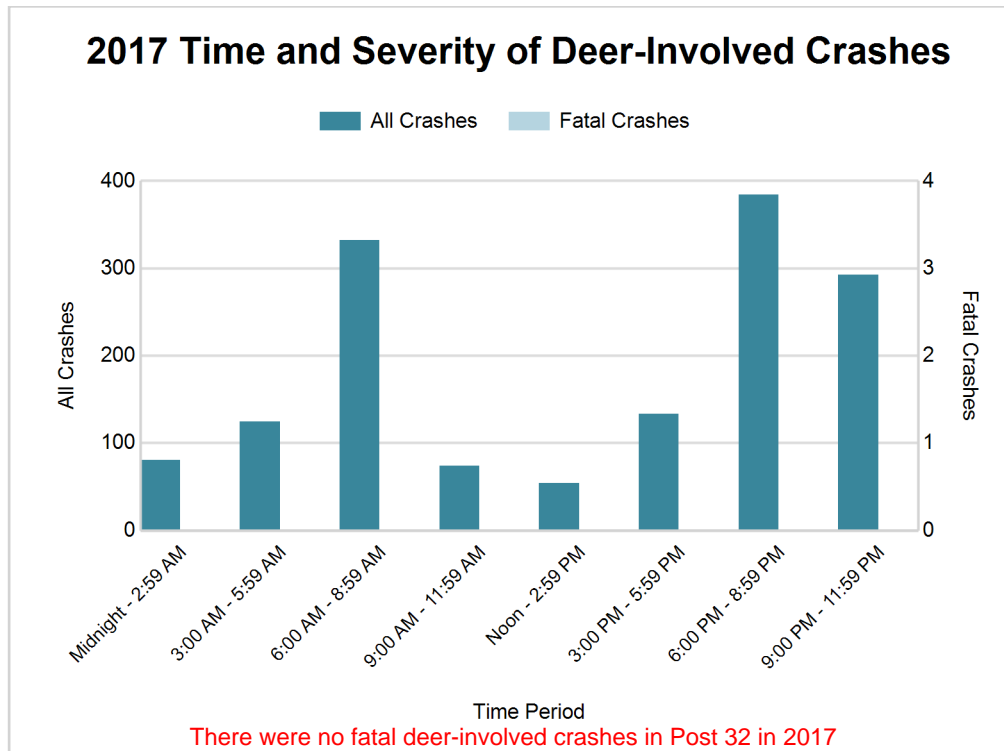
## MSP Post 32 - West Branch (continued)

### 5-Year Trend - Deer-Involved Crashes by Time of Day

Time of Day	2013		2014		2015		2016		2017	
	Total Crashes	Fatal Crashes	Total Crashes	Fatal Crashes	Total Crashes	Fatal Crashes	Total Crashes	Fatal Crashes	Total Crashes	Fatal Crashes
Midnight - 2:59 AM	88	0	78	0	59	0	55	0	80	0
3:00 AM - 5:59 AM	133	0	144	0	131	0	76	0	124	0
6:00 AM - 8:59 AM	324	0	288	0	301	1	193	0	332	0
9:00 AM - 11:59 AM	101	0	91	0	102	0	59	0	74	0
Noon - 2:59 PM	65	0	60	0	62	0	40	0	54	0
3:00 PM - 5:59 PM	111	0	122	0	94	0	69	0	133	0
6:00 PM - 8:59 PM	367 †	0	298 †	0	353 †	0	246 †	0	384 †	0
9:00 PM - 11:59 PM	298	0	259	1	276	0	186	0	292	0
Unknown	1	0	0	0	1	0	0	0	1	0
<b>Total</b>	<b>1,488</b>	<b>0</b>	<b>1,340</b>	<b>1</b>	<b>1,379</b>	<b>1</b>	<b>924</b>	<b>0</b>	<b>1,474</b>	<b>0</b>

Note: † Indicates that the highest number of total crashes reported in the 5-year period occurred in the same time period





#### 2017 - Reported Motor Vehicle Crashes by County

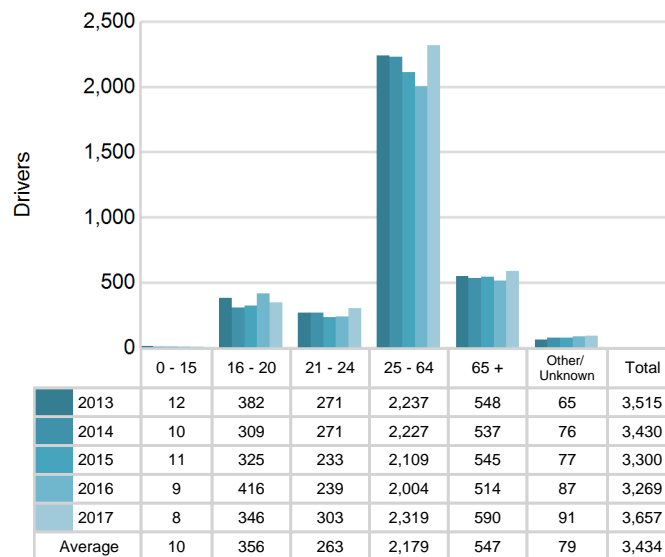
County	Crashes											Persons	
	Total	Fatal	Injury	Property Damage	Inter-state	US Route	State Route	Local Street	Alcohol-Involved	Drug-Involved	Deer-Involved	Fatalities	Injuries
Arenac	737	6	101	630	120	194	84	338	33	6	387	7	131
Gladwin	767	3	90	674	0	0	287	477	40	4	425	3	122
Iosco	574	3	102	469	0	162	136	276	31	5	220	3	151
Ogemaw	850	5	112	733	161	0	256	430	30	8	442	5	147
<b>Total</b>	<b>2,928</b>	<b>17</b>	<b>405</b>	<b>2,506</b>	<b>281</b>	<b>356</b>	<b>763</b>	<b>1,521</b>	<b>134</b>	<b>23</b>	<b>1,474</b>	<b>18</b>	<b>551</b>

## MSP Post 32 - West Branch (continued)

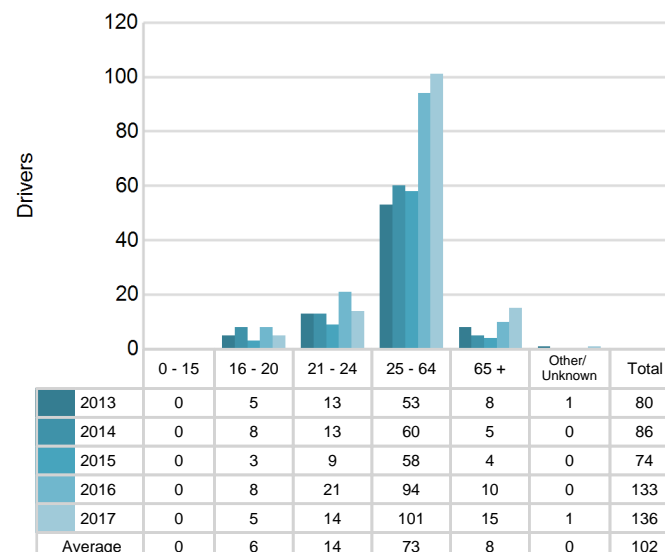
### 5-Year Trend - Drivers in Crashes Coded Drinking by Driver Age

Driver Age	2013		2014		2015		2016		2017	
	Total Drivers in Crashes	Total Drivers Coded Drinking	Total Drivers in Crashes	Total Drivers Coded Drinking	Total Drivers in Crashes	Total Drivers Coded Drinking	Total Drivers in Crashes	Total Drivers Coded Drinking	Total Drivers in Crashes	Total Drivers Coded Drinking
0 - 15	12	0	10	0	11	0	9	0	8	0
16 - 20	382	5	309	8	325	3	416	8	346	5
21 - 24	271	13	271	13	233	9	239	21	303	14
25 - 64	2,237	53	2,227	60	2,109	58	2,004	94	2,319	101
65 +	548	8	537	5	545	4	514	10	590	15
Unknown	65	1	76	0	77	0	87	0	91	1
<b>Total</b>	<b>3,515</b>	<b>80</b>	<b>3,430</b>	<b>86</b>	<b>3,300</b>	<b>74</b>	<b>3,269</b>	<b>133</b>	<b>3,657</b>	<b>136</b>

**5-Year Trend  
Total Drivers in Crashes by Age**



**5-Year Trend  
Total Drivers Coded Drinking by Age**



## 2017 - Bodily Alcohol Concentration (BAC) Results Among All Vehicle Drivers in Alcohol-Involved Crashes by Age

Age Group	Drivers				BAC Result Range for Drivers Coded Drinking				
	Total Drivers in Alcohol-Involved Crashes	Total Drivers Tested in all Crashes	Total Drivers Coded Drinking, Tested	Total Drivers Coded Drinking	BAC = 0.00	BAC 0.01 g/dL to 0.07 g/dL	BAC 0.08 g/dL to 0.16 g/dL	BAC 0.17 g/dL and Above	BAC Not Reported
0 - 15	1	0	0	0	0	0	0	0	0
16 - 20	6	7	4	5	0	0	0	3	2
21 - 24	14	16	12	14	0	0	5	3	6
25 - 64	112	96	72	101	1	9	21	20	50
65 +	18	19	15	15	0	5	6	2	2
Unknown	8	0	0	1	0	0	0	0	1
<b>Total</b>	<b>159</b>	<b>138</b>	<b>103</b>	<b>136</b>	<b>1</b>	<b>14</b>	<b>32</b>	<b>28</b>	<b>61</b>

Notes: BAC measured in grams (g) per deciliter (dL).

BAC may not be reported if drivers are not tested or if the results are not available immediately (as in the case of a blood test).

A driver may be coded by the officer as drinking even though no test is administered.

## Alcohol-Involved Crashes

In 2017, there were 159 drivers in alcohol-involved crashes; 136 (85.5%) of those drivers were coded as had-been-drinking by the officer on the crash form.

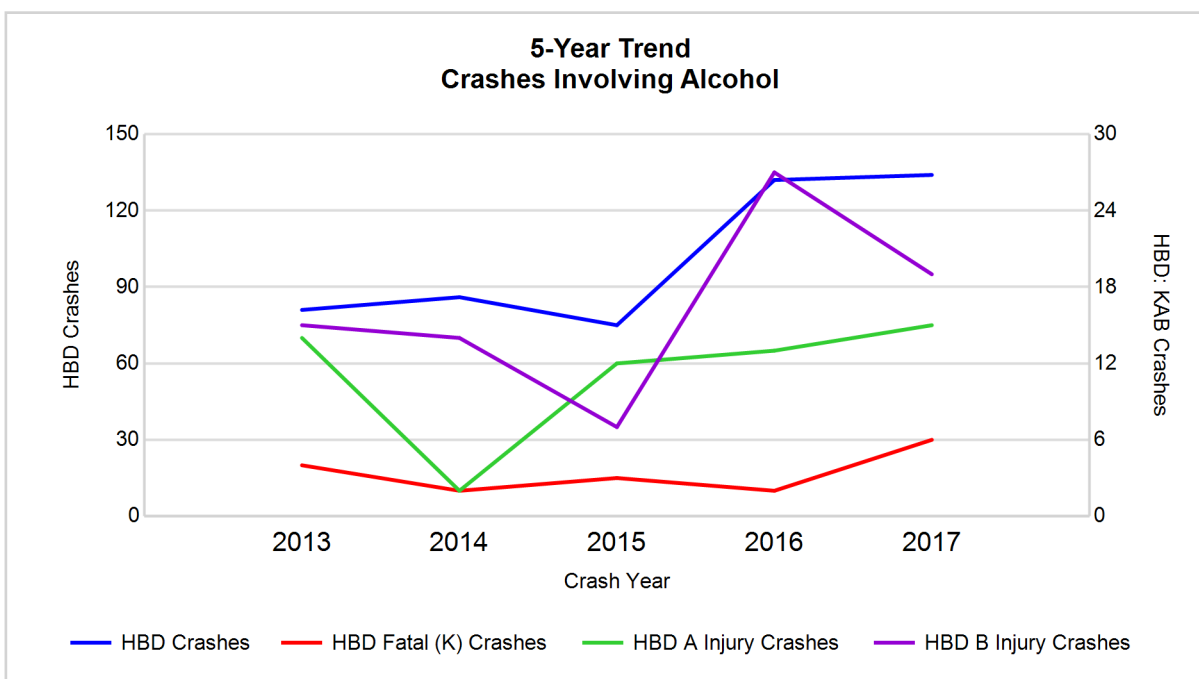
- 60 (44.1%) of the 136 drivers had a blood alcohol concentration (BAC) of 0.08 g/dL (grams per deciliter) or greater, and 28 (46.7%) of the 60 drivers had a BAC at or above 0.17 g/dL.
- 103 (75.7%) of the 136 drivers were coded as had-been-drinking and were tested for alcohol consumption.

## 5-Year Trend - Crashes Involving Alcohol

Year	All Crashes	HBD Crashes	% HBD	Fatal Crashes	HBD Fatal Crashes	% HBD	A Injury Crashes	HBD A Injury Crashes	% HBD	B Injury Crashes	HBD B Injury Crashes	% HBD
2013	2,885	81	2.8	16	4	25.0	76	14	18.4	132	15	11.4
2014	2,739	86	3.1	10	2	20.0	60	2	3.3	88	14	15.9
2015	2,648	75	2.8	16	3	18.8	54	12	22.2	116	7	6.0
2016	2,503	132	5.3	8	2	25.0	79	13	16.5	156	27	17.3
2017	2,928**	134**	4.6	17**	6**	35.3**	73	15**	20.5	140	19	13.6

Note: \* Indicates that the most recent year is the lowest number or percentage reported in the 5-year period in that column

\*\* Indicates that the most recent year is the highest number or percentage reported in the 5-year period in that column



Note: Had-Been-Drinking (HBD)

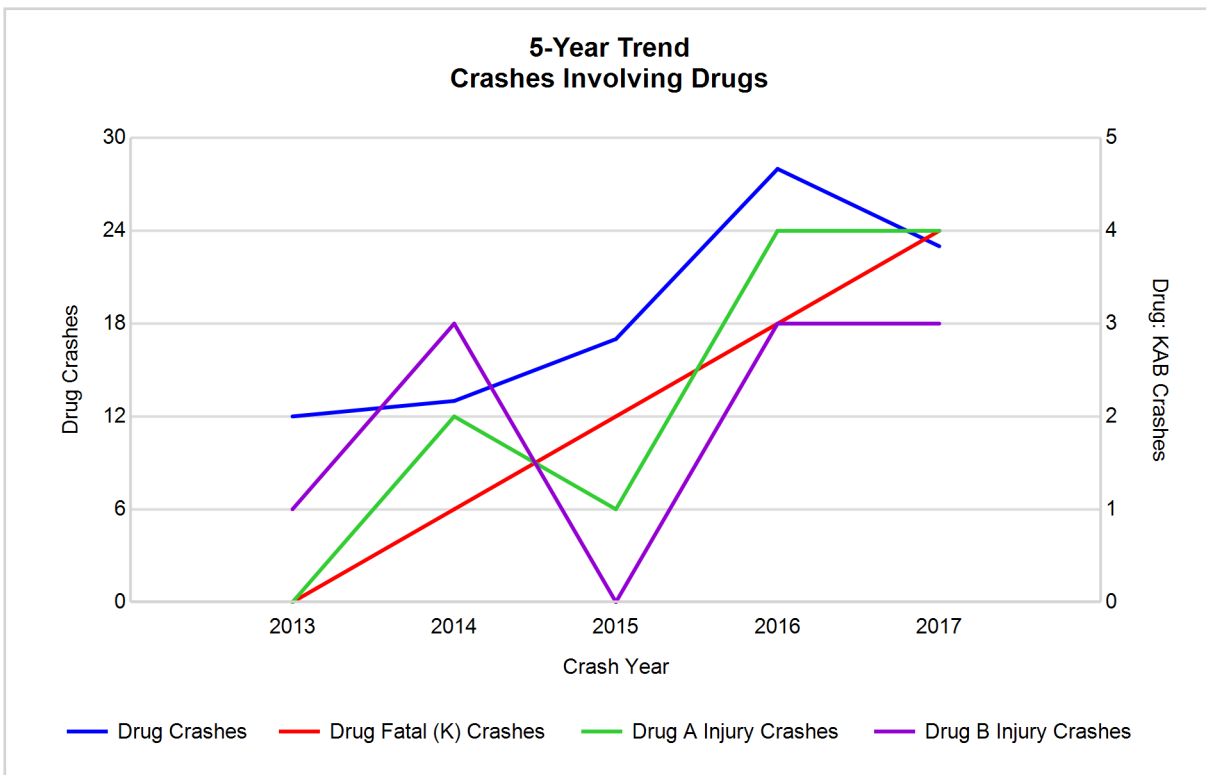
## MSP Post 32 - West Branch (continued)

### 5-Year Trend - Crashes Involving Drugs

Year	All Crashes	Drug Crashes	% Drug	Fatal Crashes	Drug Fatal Crashes	% Drug	A Injury Crashes	Drug A Injury Crashes	% Drug	B Injury Crashes	Drug B Injury Crashes	% Drug
2013	2,885	12	0.4	16	0	0.0	76	0	0.0	132	1	0.8
2014	2,739	13	0.5	10	1	10.0	60	2	3.3	88	3	3.4
2015	2,648	17	0.6	16	2	12.5	54	1	1.9	116	0	0.0
2016	2,503	28	1.1	8	3	37.5	79	4	5.1	156	3	1.9
2017	2,928**	23	0.8	17**	4**	23.5	73	4	5.5**	140	3	2.1

Note: \* Indicates that the most recent year is the lowest number or percentage reported in the 5-year period in that column

\*\* Indicates that the most recent year is the highest number or percentage reported in the 5-year period in that column

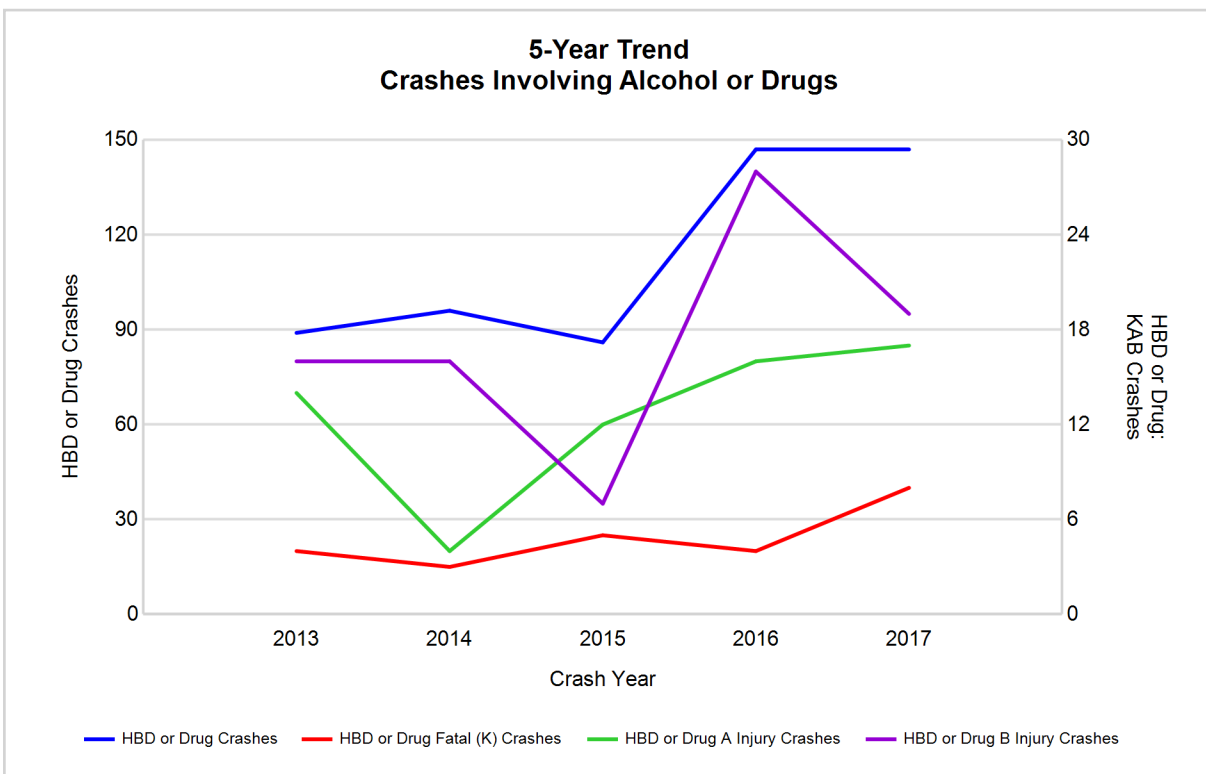


## 5-Year Trend - Crashes Involving Alcohol or Drugs

Year	All Crashes	HBD or Drug Crashes	% HBD or Drug	Fatal Crashes	HBD or Drug Fatal Crashes	% HBD or Drug	A Injury Crashes	HBD or Drug A Injury Crashes	% HBD or Drug	B Injury Crashes	HBD or Drug B Injury Crashes	% HBD or Drug
2013	2,885	89	3.1	16	4	25.0	76	14	18.4	132	16	12.1
2014	2,739	96	3.5	10	3	30.0	60	4	6.7	88	16	18.2
2015	2,648	86	3.2	16	5	31.3	54	12	22.2	116	7	6.0
2016	2,503	147	5.9	8	4	50.0	79	16	20.3	156	28	17.9
2017	2,928**	147	5.0	17**	8**	47.1	73	17**	23.3**	140	19	13.6

Note: \* Indicates that the most recent year is the lowest number or percentage reported in the 5-year period in that column

\*\* Indicates that the most recent year is the highest number or percentage reported in the 5-year period in that column



# MSP Post 32 - West Branch (continued)

## 2017 - Restraints Worn Among Vehicle Drivers and Injured Passengers by Vehicle Type

Vehicle Type	Total Occupants			Fatalities			A - Suspected Serious			B - Suspected Minor			C - Possible Injury			No Injury		
	Total	Used Restraint	%	Total	Used Restraint	%	Total	Used Restraint	%	Total	Used Restraint	%	Total	Used Restraint	%	Total	Used Restraint	%
Passenger car, SUV, van	2,758	2,565	93.0	12	7	58.3	52	35	67.3	110	100	90.9	203	189	93.1	2,297	2,198	95.7
Motor home	14	14	100.0	0	0	0.0	0	0	0.0	0	0	0.0	1	1	100.0	13	13	100.0
Pickup truck	831	775	93.3	1	0	0.0	13	8	61.5	31	26	83.9	56	52	92.9	699	679	97.1
Small truck under 10,000 lbs. GVWR	32	30	93.8	1	0	0.0	0	0	0.0	1	1	100.0	1	1	100.0	29	28	96.6
Motorcycle	39	25	64.1	1	1	100.0	10	6	60.0	14	8	57.1	3	2	66.7	10	8	80.0
Moped / goped	2	1	50.0	0	0	0.0	1	1	100.0	0	0	0.0	1	0	0.0	0	0	0.0
Go-cart / golf cart	1	0	0.0	0	0	0.0	0	0	0.0	0	0	0.0	0	0	0.0	1	0	0.0
Snowmobile	3	1	33.3	1	0	0.0	0	0	0.0	1	1	100.0	1	0	0.0	0	0	0.0
Off-Road Vehicle - ORV / All-Terrain Vehicle - ATV	19	13	68.4	0	0	0.0	6	2	33.3	8	6	75.0	1	1	100.0	4	4	100.0
Other	15	9	60.0	0	0	0.0	2	0	0.0	1	0	0.0	1	0	0.0	11	9	81.8
Truck/bus over 10,000 lbs.	66	61	92.4	0	0	0.0	1	1	100.0	0	0	0.0	6	6	100.0	56	52	92.9
Unknown	26	1	3.8	1	0	0.0	1	0	0.0	0	0	0.0	0	0	0.0	2	1	50.0
<b>Total</b>	<b>3,806</b>	<b>3,495</b>	<b>91.8</b>	<b>17</b>	<b>8</b>	<b>47.1</b>	<b>86</b>	<b>53</b>	<b>61.6</b>	<b>166</b>	<b>142</b>	<b>85.5</b>	<b>274</b>	<b>252</b>	<b>92.0</b>	<b>3,122</b>	<b>2,992</b>	<b>95.8</b>

Note: Restraint Use includes shoulder belt only used, lap belt only used, both lap and shoulder belts used, child restraint used, restraint failure, and helmet worn.

## 2017 - Restraints Worn Among Vehicle Drivers and Injured Passengers by Age

Age Group	Total Occupants			Fatalities			A - Suspected Serious			B - Suspected Minor			C - Possible Injury			No Injury		
	Total	Used Restraint	%	Total	Used Restraint	%	Total	Used Restraint	%	Total	Used Restraint	%	Total	Used Restraint	%	Total	Used Restraint	%
0 - 15	30	27	90.0	0	0	0.0	4	2	50.0	8	8	100.0	11	11	100.0	6	5	83.3
16 - 20	368	351	95.4	1	0	0.0	7	4	57.1	28	25	89.3	35	31	88.6	293	287	98.0
21 - 24	320	295	92.2	4	1	25.0	4	2	50.0	22	16	72.7	21	18	85.7	266	255	95.9
25 - 64	2,383	2,225	93.4	7	3	42.9	52	31	59.6	91	77	84.6	161	146	90.7	2,031	1,932	95.1
65 +	613	594	96.9	5	4	80.0	19	14	73.7	17	16	94.1	45	45	100.0	522	511	97.9
Unknown	92	3	3.3	0	0	0.0	0	0	0.0	0	0	0.0	1	1	100.0	4	2	50.0
<b>Total</b>	<b>3,806</b>	<b>3,495</b>	<b>91.8</b>	<b>17</b>	<b>8</b>	<b>47.1</b>	<b>86</b>	<b>53</b>	<b>61.6</b>	<b>166</b>	<b>142</b>	<b>85.5</b>	<b>274</b>	<b>252</b>	<b>92.0</b>	<b>3,122</b>	<b>2,992</b>	<b>95.8</b>

Note: Restraint Use includes shoulder belt only used, lap belt only used, both lap and shoulder belts used, child restraint used, restraint failure, and helmet worn.



# MSP Post 32 - West Branch (continued)

14

## 5-Year Trend - Restraint Use Among Drivers

Restraint Use	2013			2014			2015			2016			2017		
	Drivers	Fatal Drivers	Injured Drivers	Drivers	Fatal Drivers	Injured Drivers	Drivers	Fatal Drivers	Injured Drivers	Drivers	Fatal Drivers	Injured Drivers	Drivers	Fatal Drivers	Injured Drivers
No belts available	26	0	9	23	0	4	9	1	1	16	0	5	21	0	6
Shoulder belt only used	2	0	1	2	0	1	0	0	0	7	0	1	18	0	1
Lap belt only used	8	0	2	5	0	0	8	0	3	10	0	2	9	0	0
Both lap & shoulder belts used	3,241	5	294	3,128	2	278	3,045	3	290	2,978	4	367	3,312	6	303
No belts used	30	2	14	33	2	15	31	5	14	32	0	23	48	2	24
Child restraint used	0	0	0	0	0	0	0	0	0	2	0	0	1	0	0
Child restraint not used, unavailable or improper use	1	0	0	1	0	0	0	0	0	0	0	0	0	0	0
Restraint failure	0	0	0	0	0	0	0	0	0	2	0	0	1	0	0
Restraint use unknown	74	0	10	110	0	20	93	0	13	116	1	21	149	3	16
Helmet worn	46	3	34	35	1	23	22	1	13	37	1	30	29	1	19
Helmet not worn	30	1	27	15	1	13	24	3	17	17	1	14	12	1	11
Helmet use unknown	1	0	1	1	1	0	1	0	1	5	0	3	3	0	1
Uncoded & errors	56	0	0	77	0	1	67	0	0	47	0	0	54	0	0
<b>Total</b>	<b>3,515</b>	<b>11</b>	<b>392</b>	<b>3,430</b>	<b>7</b>	<b>355</b>	<b>3,300</b>	<b>13</b>	<b>352</b>	<b>3,269</b>	<b>7</b>	<b>466</b>	<b>3,657</b>	<b>13</b>	<b>381</b>

## 5-Year Trend - Restraint Use Among Drivers Coded Drinking

Restraint Use	2013			2014			2015			2016			2017		
	Drivers	Fatal Drivers	Injured Drivers	Drivers	Fatal Drivers	Injured Drivers	Drivers	Fatal Drivers	Injured Drivers	Drivers	Fatal Drivers	Injured Drivers	Drivers	Fatal Drivers	Injured Drivers
No belts available	3	0	2	0	0	0	0	0	0	1	0	0	2	0	0
Shoulder belt only used	0	0	0	0	0	0	0	0	0	0	0	0	1	0	0
Lap belt only used	0	0	0	0	0	0	0	0	0	0	0	0	1	0	0
Both lap & shoulder belts used	48	0	11	58	1	8	55	1	11	97	0	37	85	0	22
No belts used	2	1	1	7	0	5	5	0	5	11	0	8	11	2	8
Child restraint used	0	0	0	0	0	0	0	0	0	0	0	0	0	0	0
Child restraint not used, unavailable or improper use	0	0	0	0	0	0	0	0	0	0	0	0	0	0	0
Restraint failure	0	0	0	0	0	0	0	0	0	0	0	0	0	0	0
Restraint use unknown	13	0	4	17	0	4	9	0	3	22	1	7	31	2	8
Helmet worn	7	1	6	2	0	2	2	1	1	1	1	0	1	0	1
Helmet not worn	5	1	4	2	0	2	3	1	2	1	0	1	4	1	3
Helmet use unknown	1	0	1	0	0	0	0	0	0	0	0	0	0	0	0
Uncoded & errors	1	0	0	0	0	0	0	0	0	0	0	0	0	0	0
<b>Total</b>	<b>80</b>	<b>3</b>	<b>29</b>	<b>86</b>	<b>1</b>	<b>21</b>	<b>74</b>	<b>3</b>	<b>22</b>	<b>133</b>	<b>2</b>	<b>53</b>	<b>136</b>	<b>5</b>	<b>42</b>

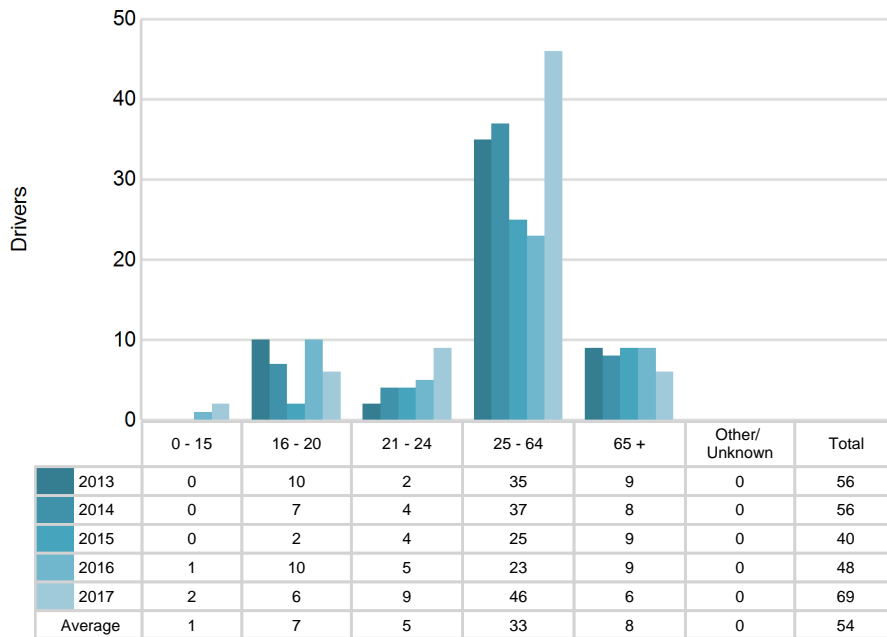
# MSP Post 32 - West Branch (continued)

## 5-Year Trend - Seatbelt Not Used Among Drivers by Age

Age Group	2013			2014			2015			2016			2017		
	Drivers	Fatal Drivers	Injured Drivers	Drivers	Fatal Drivers	Injured Drivers	Drivers	Fatal Drivers	Injured Drivers	Drivers	Fatal Drivers	Injured Drivers	Drivers	Fatal Drivers	Injured Drivers
0 - 15	0	0	0	0	0	0	0	0	0	1	0	1	2	0	1
16 - 20	10	0	4	7	0	2	2	1	0	10	0	6	6	0	2
21 - 24	2	0	0	4	0	1	4	0	3	5	0	2	9	1	6
25 - 64	35	1	15	37	1	11	25	3	11	23	0	14	46	1	18
65 +	9	1	4	8	1	5	9	2	1	9	0	5	6	0	3
Unknown	0	0	0	0	0	0	0	0	0	0	0	0	0	0	0
<b>Total</b>	<b>56</b>	<b>2</b>	<b>23</b>	<b>56</b>	<b>2</b>	<b>19</b>	<b>40</b>	<b>6</b>	<b>15</b>	<b>48</b>	<b>0</b>	<b>28</b>	<b>69</b>	<b>2</b>	<b>30</b>

Note: Seatbelt Not Used includes no belts available or no belts used.

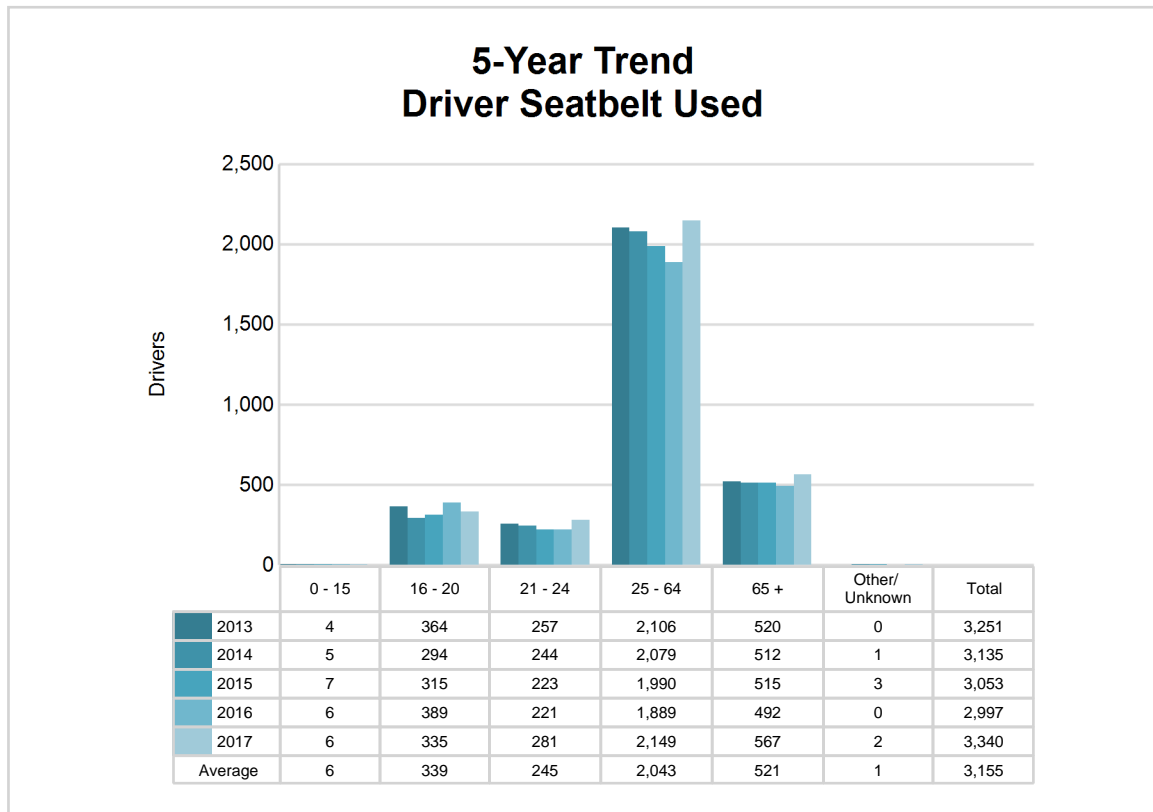
## 5-Year Trend Driver Seatbelt Not Used



## 5-Year Trend - Seatbelt Used Among Drivers by Age

Age Group	2013			2014			2015			2016			2017		
	Drivers	Fatal Drivers	Injured Drivers	Drivers	Fatal Drivers	Injured Drivers	Drivers	Fatal Drivers	Injured Drivers	Drivers	Fatal Drivers	Injured Drivers	Drivers	Fatal Drivers	Injured Drivers
0 - 15	4	0	0	5	0	1	7	0	0	6	0	1	6	0	0
16 - 20	364	0	42	294	0	34	315	0	46	389	2	63	335	0	44
21 - 24	257	0	34	244	0	30	223	0	20	221	0	33	281	1	23
25 - 64	2,106	1	165	2,079	2	154	1,990	2	177	1,889	2	206	2,149	2	188
65 +	520	4	56	512	0	60	515	1	50	492	0	67	567	3	49
Unknown	0	0	0	1	0	0	3	0	0	0	0	0	2	0	0
<b>Total</b>	<b>3,251</b>	<b>5</b>	<b>297</b>	<b>3,135</b>	<b>2</b>	<b>279</b>	<b>3,053</b>	<b>3</b>	<b>293</b>	<b>2,997</b>	<b>4</b>	<b>370</b>	<b>3,340</b>	<b>6</b>	<b>304</b>

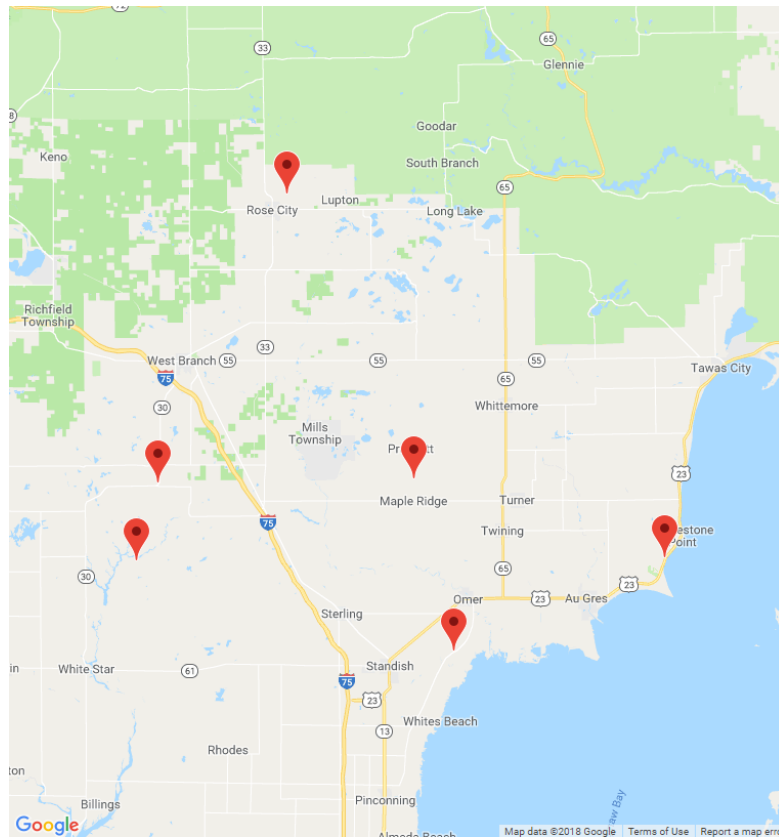
Note: Seatbelt Used includes shoulder belt only used, lap belt only used, both lap and shoulder belts used, and restraint failure.



# MSP Post 32 - West Branch (continued)

## 5-Year Trend - Drivers in Crashes by Hazardous Action

Hazardous Action	2013		2014		2015		2016		2017	
	Total Drivers in Crashes	Drivers in Fatal Crashes	Total Drivers in Crashes	Drivers in Fatal Crashes	Total Drivers in Crashes	Drivers in Fatal Crashes	Total Drivers in Crashes	Drivers in Fatal Crashes	Total Drivers in Crashes	Drivers in Fatal Crashes
None	2,182	7	2,105	3	2,091	6	1,746	5	2,271	10
Speed too fast	537	4	466	3	338	4	489	3	397	6
Speed too slow	4	0	6	0	2	0	3	0	3	0
Failed to yield	172	4	185	0	183	2	229	1	229	1
Disregard traffic control	25	0	36	1	35	0	23	0	31	0
Drove wrong way	2	0	1	0	3	0	2	0	0	0
Drove left of center	9	0	14	0	13	1	23	0	18	1
Improper passing	22	0	17	0	15	0	23	0	19	0
Improper lane use	19	0	31	0	37	0	37	1	33	0
Improper turn	27	0	15	0	21	0	25	0	19	0
Improper/no signal	4	0	6	0	7	0	9	0	5	0
Improper backing	40	0	39	0	41	0	47	0	45	0
Unable to stop in assured clear distance	166	3	188	1	181	1	184	0	186	1
Other	78	1	85	1	88	1	110	0	108	1
Unknown	26	3	36	2	53	3	64	0	62	2
Reckless driving	17	1	23	0	24	0	28	0	17	0
Careless/negligent driving	162	0	144	1	136	3	163	3	131	3
Uncoded & errors	23	1	33	0	32	0	64	0	83	2
<b>Total</b>	<b>3,515</b>	<b>24</b>	<b>3,430</b>	<b>12</b>	<b>3,300</b>	<b>21</b>	<b>3,269</b>	<b>13</b>	<b>3,657</b>	<b>27</b>



The picture above represents all 2017 alcohol-involved fatal crashes in Post 32.

In 2017, there were 134 alcohol-involved crashes in Post 32:

6	K - Fatal Crashes
15	A - Suspected Serious Injury Crashes
19	B - Suspected Minor Injury Crashes
15	C - Possible Injury Crashes
79	O - Property Damage Only/No Injury Crashes

### Office of Highway Safety Planning

---

Physical Address:  
7150 Harris Drive  
Dimondale, Michigan 48821

Mailing Address:  
P.O. Box 30634  
Lansing, Michigan 48909

Phone: (517) 284-3112  
Fax: (517) 284-3151

Find us on the web:  
[MichiganTrafficCrashFacts.org](http://MichiganTrafficCrashFacts.org)

