



2017

**MTCF**  
Michigan Traffic  
Crash Facts

# Michigan Traffic Crash Facts

## Reporting Criteria

Please pay particular attention to the wording when interpreting the three levels of data gathered for this report.

### Crash

The Crash Level analyzes data related to crash events and returns one result per crash.

Examples: Time, weather, and location.

### Units

The Units Level analyzes the experience of the units in the crash and returns one result per vehicle, driver, pedestrian, bicyclist, or train.

Examples: Vehicle type, driver condition, and unit events.

### People

The People Level analyzes the experience of the people involved in the crash and returns one result per occupant/person/party.

Examples: Age, injury severity, and seat belt or helmet use.

### **KABCO Injury Indicator:**

K = Killed

A = Suspected Serious Injury

B = Suspected Minor Injury

C = Possible Injury

O = No Injury

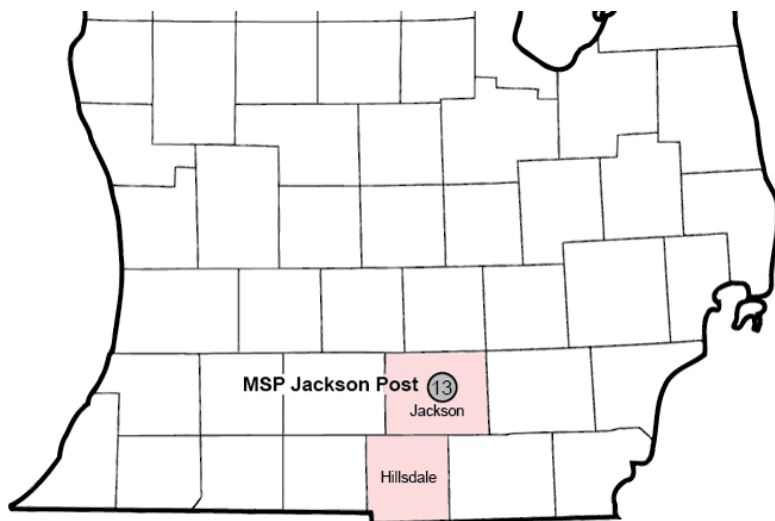
Property Damage Only (PDO)



## Michigan State Police (MSP) Post 13 - Jackson

### 2017 Traffic Crash Data & 2013-2017 5-Year Trends

Post 13 is comprised of Hillsdale and Jackson counties. Trend tables for this report are based on those counties.



### Sources:

The crashes in this report occurred on public roadways in Michigan and resulted in injuries, fatalities, or property damage (with \$1,000 as a reporting threshold). The information was gathered from Michigan Traffic Crash Report Forms (UD-10) submitted by local police departments, sheriff's offices, and the Michigan State Police. Other related information was obtained from the departments of Transportation, State, and Community Health.

This page left intentionally blank

## MSP Post 13 - Jackson

- There were 6,989 crashes in Post 13 during 2017. [Page 1]
- A total of 25 fatalities resulted from 20 fatal crashes in 2017 in Post 13. [Page 1]
- There were 1,450 injuries and 1,078 injury crashes. [Page 1]
- There were 5,891 property damage only crashes (no fatalities or injuries). [Page 1]
- December had the highest number of crashes (928). [Pages 1-2]
- August, April and June had the highest number of fatal crashes (3) while September had the highest number of fatalities (4). [Pages 1-2]
- December had the highest number of injury crashes (113) while July had the highest number of injuries (148). [Page 1]
- December had the highest number of property damage only crashes (814). [Page 1]
- Of all vehicles involved in fatal crashes, 3 (10.0%) were motorcycles. [Page 1]
- Friday was the day of the week with the highest number of crashes (1,195) and fatal crashes (5). [Pages 2-3]
- The 3:00 PM - 5:59 PM time period had the highest number of crashes (1,423). This holds true for every year between 2013 and 2017. The 3:00 PM - 5:59 PM and 9:00 AM - 11:59 AM time periods had the highest number of fatal crashes (5). [Pages 5-6]
- During the period from 2013 to 2017, the highest number of deer crashes occurred in 2013 (2,287). The 6:00 PM - 8:59 PM time period consistently had the highest number of deer-involved crashes during the five-year period. There were 1 fatal crashes involving deer in 2017. [Pages 7-8]
- Jackson County (77.2%) had the highest number of crashes in Post 13 in 2017, followed by Hillsdale County (22.8%), and (0.0%). [Page 8]
- Jackson County (80.0%) had the highest number of fatalities in Post 13 in 2017, followed by Hillsdale County (20.0%), and (0.0%). [Page 8]
- The highest number of drivers in crashes (10,442) occurred during 2017 and the highest number of drivers coded drinking in crashes (268) occurred during 2017 within the five year period between 2013 and 2017. [Page 9]
- A total of 272 crashes involved alcohol in 2017. [Page 10]
- Alcohol-involved fatal crashes were the highest in 2017 and 2014 during the five-year period from 2013 to 2017 at 8. [Page 10]
- A total of 72 crashes, 5 fatal crashes, and 15 suspected serious injury crashes involved drugs in 2017, all the highest during the five-year period. [Page 11]
- There were 9,214 drivers wearing seatbelts and 106 drivers not wearing seatbelts in crashes in 2017. Of the 106 drivers not wearing seat belts, 5 (4.7%) were killed and 33 (31.1%) were injured. [Pages 14-16]
- The most common hazardous action coded for drivers in 2017 in all crashes was unable to stop in assured clear distance (1,118), while the most common hazardous action coded for drivers in fatal crashes was speed too fast (4). [Page 17]

# MSP Post 13 - Jackson (continued)

## Post 13 Experience

In 2017:

There were 10,442 drivers involved in 6,989 motor vehicle crashes in MSP Post 13. Of those crashes, 20 were classified as fatal, resulting in 25 fatalities. An additional 1,450 persons were injured.

Post 13 experienced the highest number of motor vehicle crashes (928) in December, the highest number of fatal crashes (3) in April, June and August and the highest number of persons killed (4) in September.

Michigan driver statistics indicate 6.4 percent of licensed drivers in Post 13 were age 16-20, and 11.6 percent of drivers in crashes were also in that age group.

## 2017 - Crashes and Injuries by Month

Month	Crashes				Persons	
	Total	Fatal	Injury	Property Damage Only (PDO)	Fatalities	Injuries
January	564	1	78	485	2	101
February	430	1	44	385	2	55
March	596	0	90	506	0	122
April	442	3	78	361	3	103
May	535	1	97	437	1	141
June	569	3	100	466	3	134
July	463	1	102	360	1	148
August	438	3	89	346	3	114
September	508	2	105	401	4	144
October	767	2	95	670	3	125
November	749	2	87	660	2	123
December	928	1	113	814	1	140
<b>Total</b>	<b>6,989</b>	<b>20</b>	<b>1,078</b>	<b>5,891</b>	<b>25</b>	<b>1,450</b>

## 2017 - Driver Statistics

Age Group	Post 13			Driver Rates	
	2017 Population	Licensed Drivers	Drivers in Crashes	Per 10k Population	Per 10k Licensed
0 - 15	38,986	1,078	26	6.7	241.2
16 - 20	13,461	9,420	1,207	896.7	1,281.3
21 - 24	10,356	8,574	908	876.8	1,059.0
25 - 64	105,488	94,608	6,485	614.8	685.5
65 +	36,228	32,647	1,141	314.9	349.5
Unknown	0	0	675	--	--
<b>Total</b>	<b>204,519</b>	<b>146,327</b>	<b>10,442</b>	<b>510.6</b>	<b>713.6</b>

## 2017 - Vehicles in Crashes

Vehicle Type	Motor Vehicles		Fatal Crashes		Injury Crashes	PDO Crashes
	Number of Vehicles	% of Total	Number	% of Total	Number	Number
Passenger car, SUV, van	8,034	76.9	20	66.7	1,323	6,691
Motor home	27	0.3	1	3.3	3	23
Pickup truck	1,591	15.2	1	3.3	270	1,320
Small truck under 10,000 lbs. GVWR	76	0.7	0	0.0	14	62
Motorcycle	82	0.8	3	10.0	67	12
Moped / goped	10	0.1	1	3.3	8	1
Go-cart / golf cart	0	0.0	0	0.0	0	0
Snowmobile	0	0.0	0	0.0	0	0
Off-Road Vehicle - ORV / All-Terrain Vehicle - ATV	3	0.0	1	3.3	1	1
Other	66	0.6	0	0.0	6	60
Truck/bus over 10,000 lbs.	240	2.3	3	10.0	37	200
Unknown	313	3.0	0	0.0	30	283
<b>Total</b>	<b>10,442</b>	<b>100.0</b>	<b>30</b>	<b>100.0</b>	<b>1,759</b>	<b>8,653</b>

## 5-Year Trend - Crashes by Month

Month	2013		2014		2015		2016		2017	
	Total Crashes	Fatal Crashes	Total Crashes	Fatal Crashes	Total Crashes	Fatal Crashes	Total Crashes	Fatal Crashes	Total Crashes	Fatal Crashes
January	626	0	907	1	845	0	614	0	564	1
February	606	1	614	1	556	1	586	0	430	1
March	478	4	572	1	464	1	555	0	596	0
April	395	2	446	2	382	0	433	2	442	3
May	480	0	439	4	491	3	519	4	535	1
June	473	3	422	5	461	4	467	3	569	3
July	465	2	423	1	453	0	484	2	463	1
August	405	3	351	0	415	2	442	0	438	3
September	490	0	435	2	475	3	508	4	508	2
October	621	2	662	1	681	3	724	4	767	2
November	776	2	867	3	862	0	784	2	749	2
December	721	1	584	1	561	1	781	0	928	1
<b>Total</b>	<b>6,536</b>	<b>20</b>	<b>6,722</b>	<b>22</b>	<b>6,646</b>	<b>18</b>	<b>6,897</b>	<b>21</b>	<b>6,989</b>	<b>20</b>

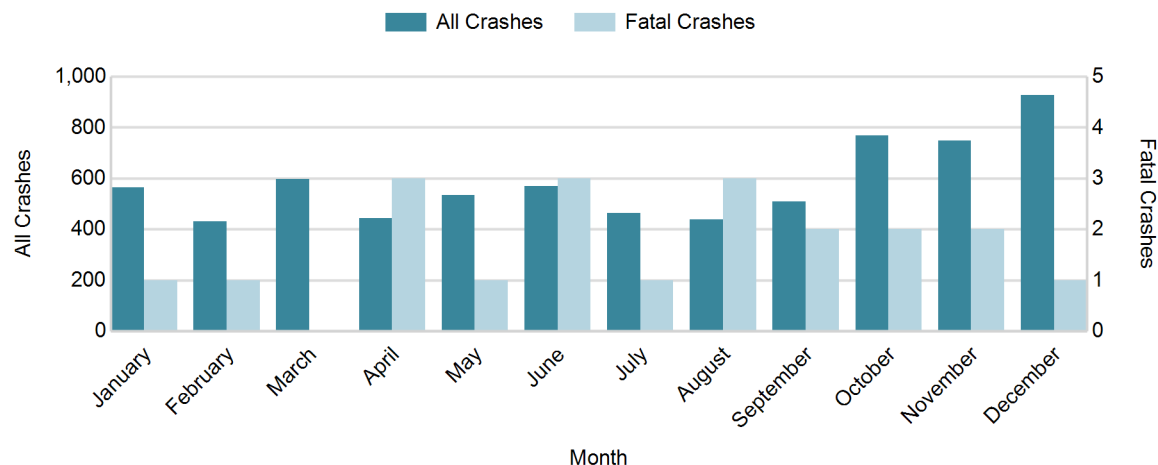
Note: † Indicates that the highest number of total crashes reported in the 5-year period occurred in the same month

## 5-Year Trend - Crashes by Day of Week

Day	2013		2014		2015		2016		2017	
	Total Crashes	Fatal Crashes	Total Crashes	Fatal Crashes	Total Crashes	Fatal Crashes	Total Crashes	Fatal Crashes	Total Crashes	Fatal Crashes
Monday	981	2	867	3	947	1	907	5	1,008	4
Tuesday	981	4	964	2	984	1	1,039	4	1,014	1
Wednesday	995	3	1,009	4	996	4	1,072	2	1,056	3
Thursday	918	1	1,249	2	965	3	1,084	3	1,101	3
Friday	1,049	4	1,119	4	1,072	2	1,245	4	1,195	5
Saturday	875	1	881	2	955	2	851	2	929	3
Sunday	737	5	633	5	727	5	699	1	686	1
<b>Total</b>	<b>6,536</b>	<b>20</b>	<b>6,722</b>	<b>22</b>	<b>6,646</b>	<b>18</b>	<b>6,897</b>	<b>21</b>	<b>6,989</b>	<b>20</b>

Note: † Indicates that the highest number of total crashes reported in the 5-year period occurred on the same day of the week

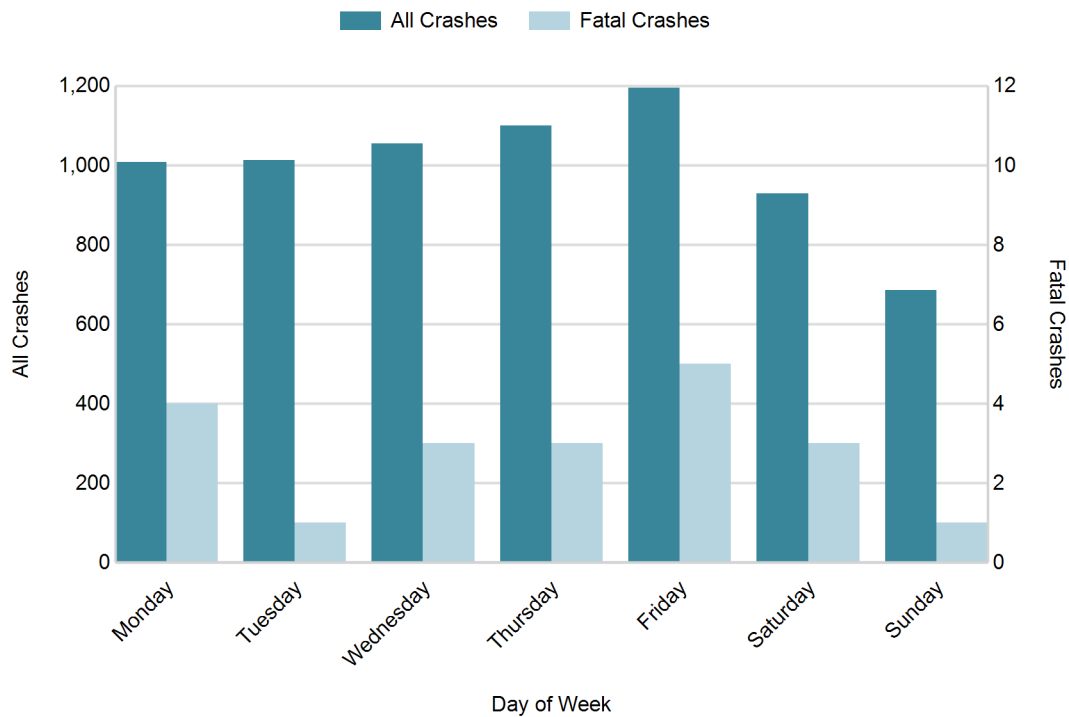
## 2017 Crashes by Month



## 2017 - Crashes by Day of Week

Day	All Crashes		Fatal Crashes		Injury Crashes			PDO Crashes
	Number	% of Total	Number	% of Fatal	A	B	C	Number
Monday	1,008	14.4	4	20.0	12	52	94	846
Tuesday	1,014	14.5	1	5.0	26	52	114	821
Wednesday	1,056	15.1	3	15.0	21	37	91	904
Thursday	1,101	15.8	3	15.0	12	50	101	935
Friday	1,195	17.1	5	25.0	27	34	111	1,018
Saturday	929	13.3	3	15.0	21	48	66	791
Sunday	686	9.8	1	5.0	15	34	60	576
<b>Total</b>	<b>6,989</b>	<b>100.0</b>	<b>20</b>	<b>100.0</b>	<b>134</b>	<b>307</b>	<b>637</b>	<b>5,891</b>

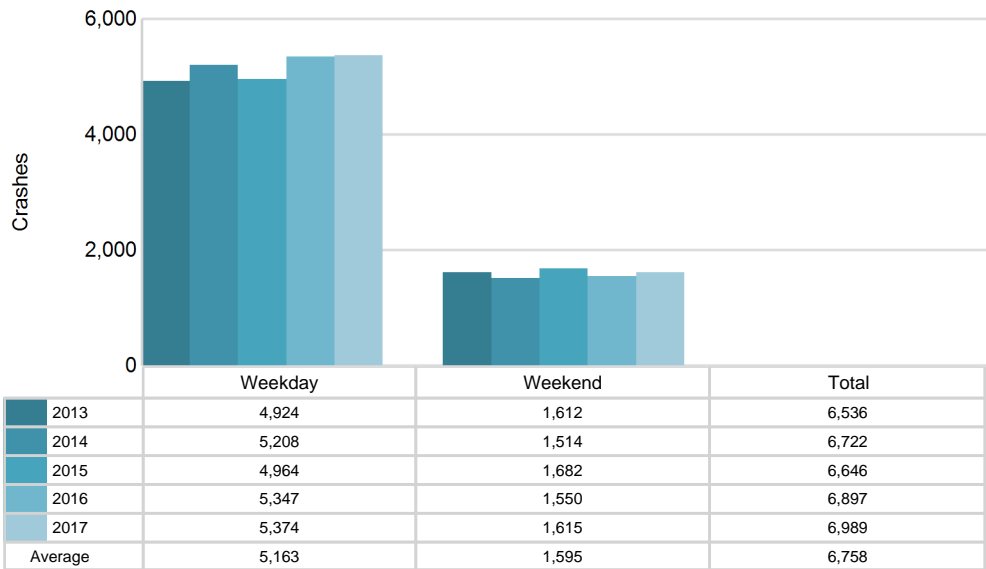
## 2017 Day of Week and Severity



5-Year Trend - Crashes by Weekday and Weekend

Portion of Week	2013		2014		2015		2016		2017	
	Total Crashes	Fatal Crashes	Total Crashes	Fatal Crashes	Total Crashes	Fatal Crashes	Total Crashes	Fatal Crashes	Total Crashes	Fatal Crashes
Weekday	4,924	14	5,208	15	4,964	11	5,347	18	5,374	16
Weekend	1,612	6	1,514	7	1,682	7	1,550	3	1,615	4
Total	6,536	20	6,722	22	6,646	18	6,897	21	6,989	20

5-Year Crash Trends by Weekday (Monday - Friday) and Weekend (Saturday & Sunday)

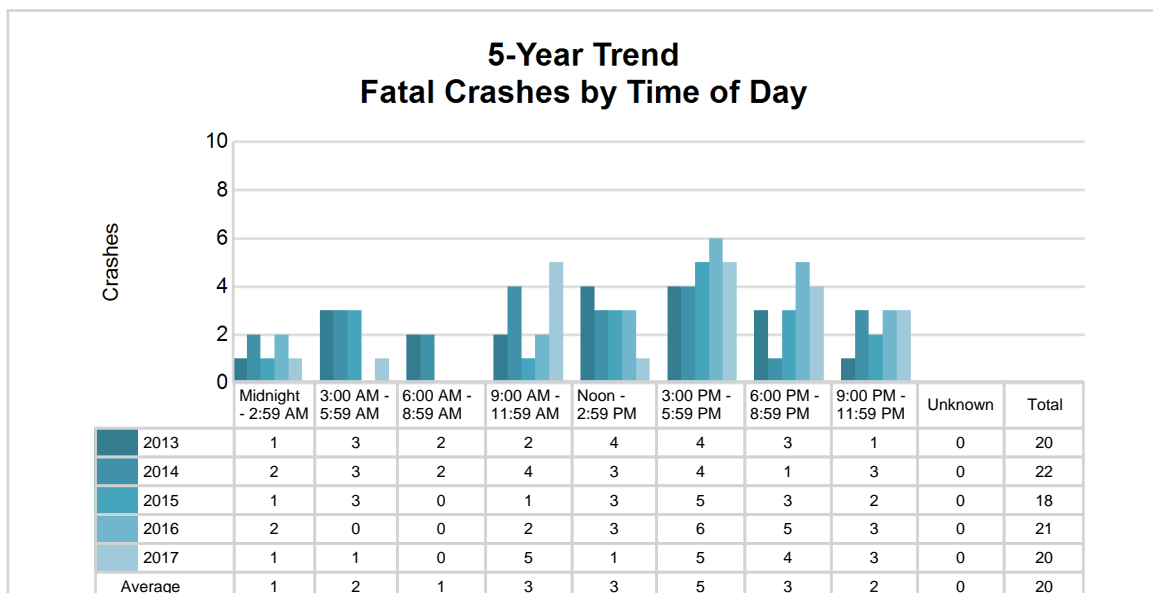
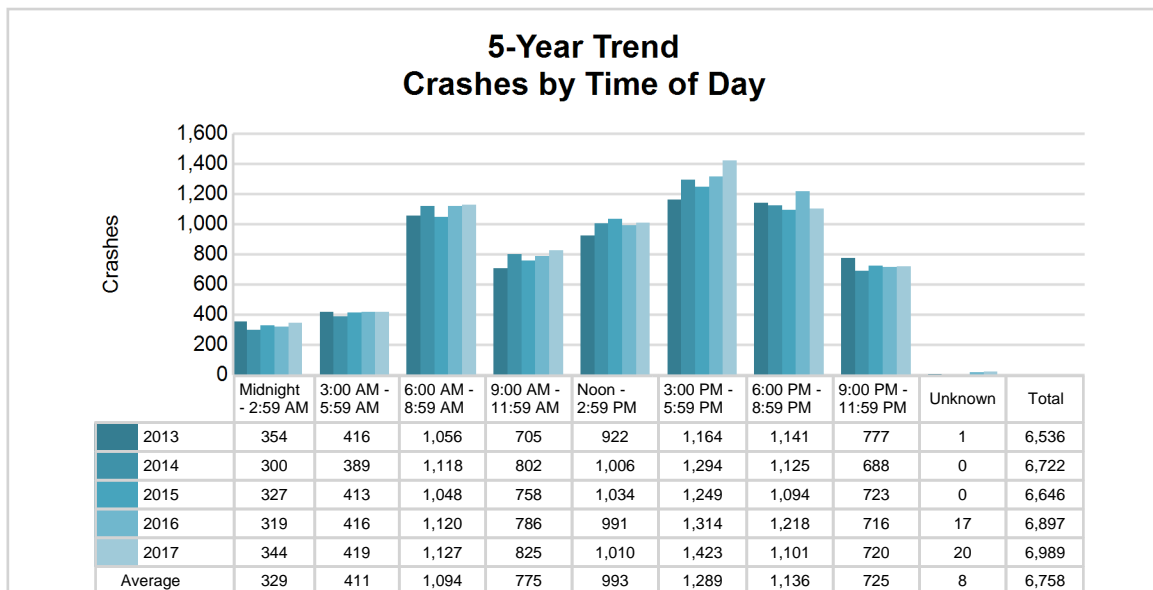


# MSP Post 13 - Jackson (continued)

## 5-Year Trend - Crashes by Time of Day

Time of Day	2013		2014		2015		2016		2017	
	Total Crashes	Fatal Crashes	Total Crashes	Fatal Crashes	Total Crashes	Fatal Crashes	Total Crashes	Fatal Crashes	Total Crashes	Fatal Crashes
Midnight - 2:59 AM	354	1	300	2	327	1	319	2	344	1
3:00 AM - 5:59 AM	416	3	389	3	413	3	416	0	419	1
6:00 AM - 8:59 AM	1,056	2	1,118	2	1,048	0	1,120	0	1,127	0
9:00 AM - 11:59 AM	705	2	802	4	758	1	786	2	825	5
Noon - 2:59 PM	922	4	1,006	3	1,034	3	991	3	1,010	1
3:00 PM - 5:59 PM	1,164 †	4	1,294 †	4	1,249 †	5	1,314 †	6	1,423 †	5
6:00 PM - 8:59 PM	1,141	3	1,125	1	1,094	3	1,218	5	1,101	4
9:00 PM - 11:59 PM	777	1	688	3	723	2	716	3	720	3
Unknown	1	0	0	0	0	0	17	0	20	0
<b>Total</b>	<b>6,536</b>	<b>20</b>	<b>6,722</b>	<b>22</b>	<b>6,646</b>	<b>18</b>	<b>6,897</b>	<b>21</b>	<b>6,989</b>	<b>20</b>

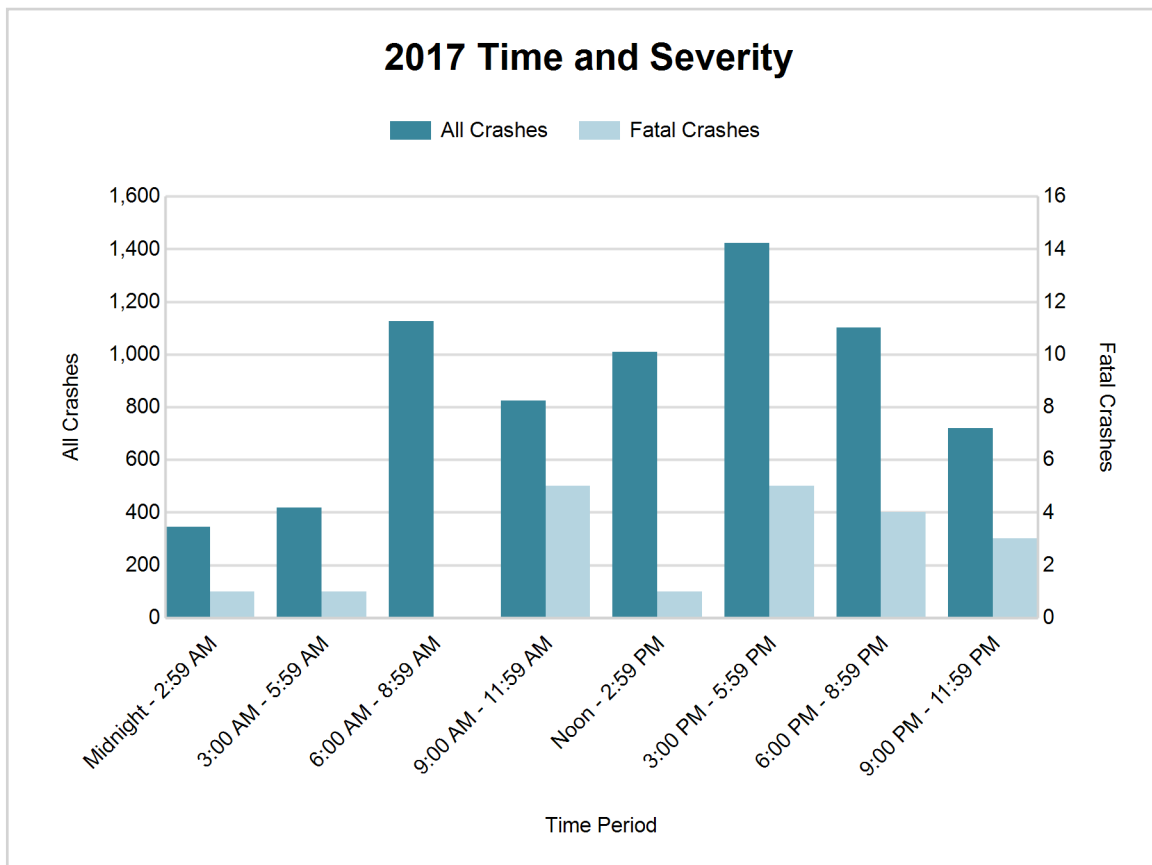
Note: † Indicates that the highest number of total crashes reported in the 5-year period occurred in the same time period





## 2017 - Time and Severity

Time of Day	All Crashes		Fatal Crashes		Injury Crashes			PDO Crashes
	Number	% of Total	Number	% of Fatal	A	B	C	Number
Midnight - 2:59 AM	344	4.9	1	5.0	9	16	33	285
3:00 AM - 5:59 AM	419	6.0	1	5.0	7	15	22	374
6:00 AM - 8:59 AM	1,127	16.1	0	0.0	11	41	91	984
9:00 AM - 11:59 AM	825	11.8	5	25.0	11	29	85	695
Noon - 2:59 PM	1,010	14.5	1	5.0	31	65	112	801
3:00 PM - 5:59 PM	1,423	20.4	5	25.0	38	63	166	1,151
6:00 PM - 8:59 PM	1,101	15.8	4	20.0	14	39	75	969
9:00 PM - 11:59 PM	720	10.3	3	15.0	13	39	53	612
Unknown	20	0.3	0	0.0	0	0	0	20
<b>Total</b>	<b>6,989</b>	<b>100.0</b>	<b>20</b>	<b>100.0</b>	<b>134</b>	<b>307</b>	<b>637</b>	<b>5,891</b>

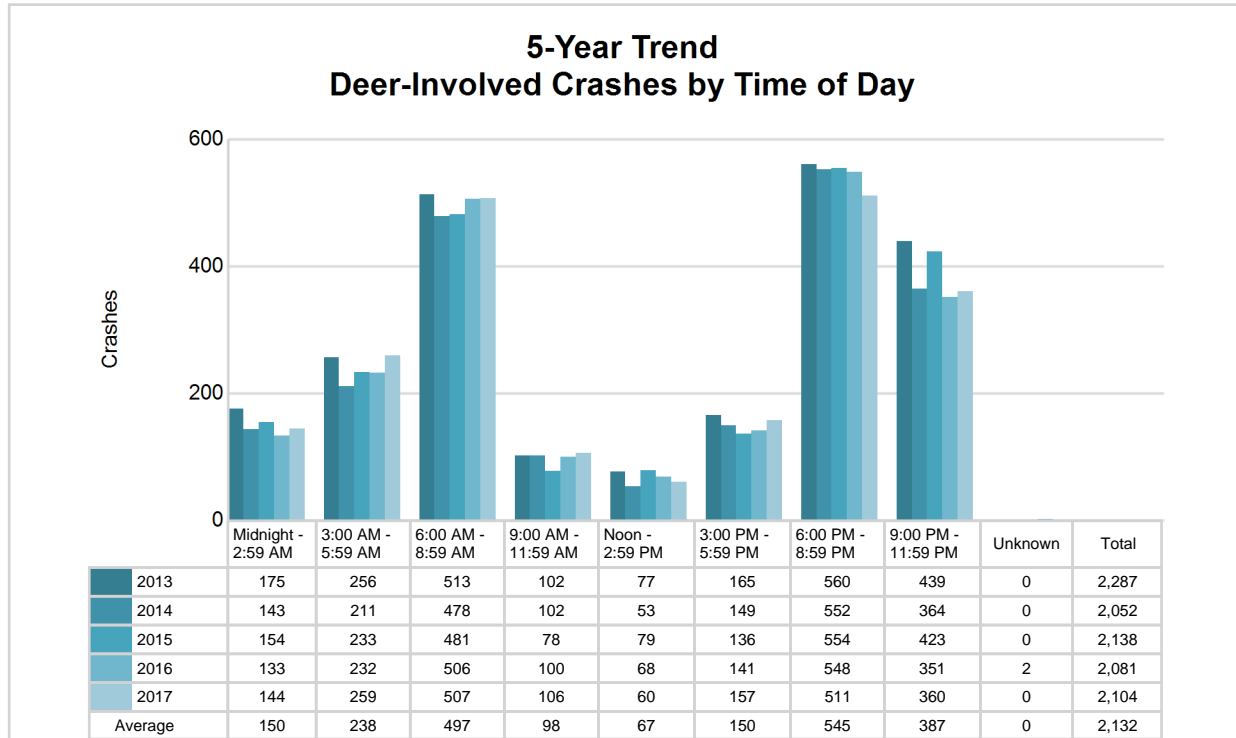


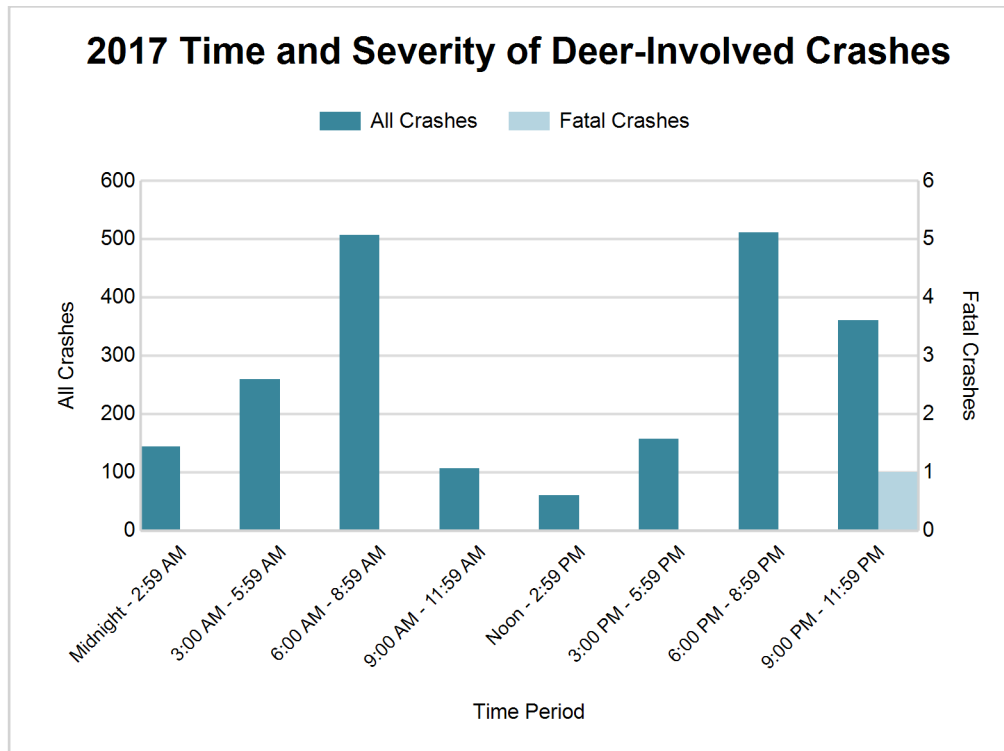
## MSP Post 13 - Jackson (continued)

### 5-Year Trend - Deer-Involved Crashes by Time of Day

Time of Day	2013		2014		2015		2016		2017	
	Total Crashes	Fatal Crashes	Total Crashes	Fatal Crashes	Total Crashes	Fatal Crashes	Total Crashes	Fatal Crashes	Total Crashes	Fatal Crashes
Midnight - 2:59 AM	175	0	143	0	154	0	133	0	144	0
3:00 AM - 5:59 AM	256	0	211	0	233	0	232	0	259	0
6:00 AM - 8:59 AM	513	0	478	0	481	0	506	0	507	0
9:00 AM - 11:59 AM	102	0	102	0	78	0	100	0	106	0
Noon - 2:59 PM	77	0	53	0	79	0	68	0	60	0
3:00 PM - 5:59 PM	165	0	149	0	136	0	141	0	157	0
6:00 PM - 8:59 PM	560 †	0	552 †	0	554 †	1	548 †	0	511 †	0
9:00 PM - 11:59 PM	439	0	364	0	423	0	351	0	360	1
Unknown	0	0	0	0	0	0	2	0	0	0
<b>Total</b>	<b>2,287</b>	<b>0</b>	<b>2,052</b>	<b>0</b>	<b>2,138</b>	<b>1</b>	<b>2,081</b>	<b>0</b>	<b>2,104</b>	<b>1</b>

Note: † Indicates that the highest number of total crashes reported in the 5-year period occurred in the same time period





#### 2017 - Reported Motor Vehicle Crashes by County

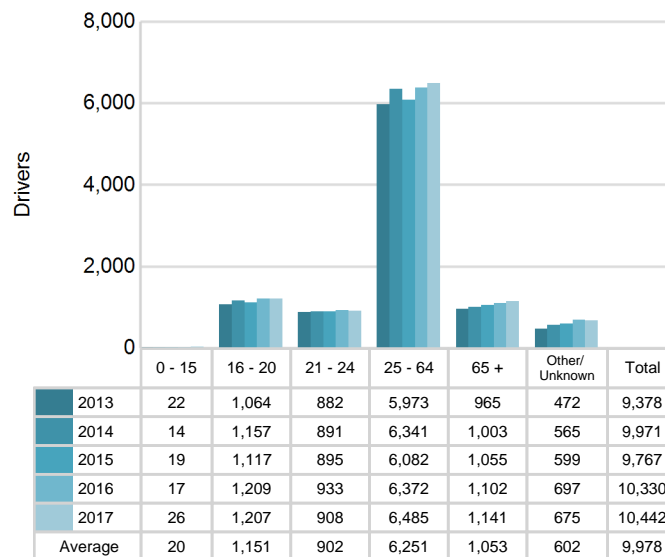
County	Crashes											Persons	
	Total	Fatal	Injury	Property Damage	Inter-state	US Route	State Route	Local Street	Alcohol-Involved	Drug-Involved	Deer-Involved	Fatalities	Injuries
Hillsdale	1,591	4	230	1,357	0	213	368	1,008	58	15	794	5	303
Jackson	5,398	16	848	4,534	966	339	851	3,238	214	57	1,310	20	1,147
<b>Total</b>	<b>6,989</b>	<b>20</b>	<b>1,078</b>	<b>5,891</b>	<b>966</b>	<b>552</b>	<b>1,219</b>	<b>4,246</b>	<b>272</b>	<b>72</b>	<b>2,104</b>	<b>25</b>	<b>1,450</b>

# MSP Post 13 - Jackson (continued)

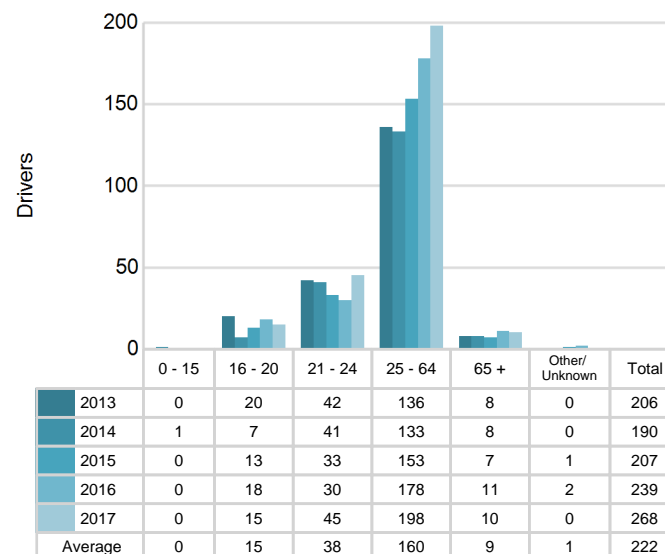
## 5-Year Trend - Drivers in Crashes Coded Drinking by Driver Age

Driver Age	2013		2014		2015		2016		2017	
	Total Drivers in Crashes	Total Drivers Coded Drinking	Total Drivers in Crashes	Total Drivers Coded Drinking	Total Drivers in Crashes	Total Drivers Coded Drinking	Total Drivers in Crashes	Total Drivers Coded Drinking	Total Drivers in Crashes	Total Drivers Coded Drinking
0 - 15	22	0	14	1	19	0	17	0	26	0
16 - 20	1,064	20	1,157	7	1,117	13	1,209	18	1,207	15
21 - 24	882	42	891	41	895	33	933	30	908	45
25 - 64	5,973	136	6,341	133	6,082	153	6,372	178	6,485	198
65 +	965	8	1,003	8	1,055	7	1,102	11	1,141	10
Unknown	472	0	565	0	599	1	697	2	675	0
<b>Total</b>	<b>9,378</b>	<b>206</b>	<b>9,971</b>	<b>190</b>	<b>9,767</b>	<b>207</b>	<b>10,330</b>	<b>239</b>	<b>10,442</b>	<b>268</b>

**5-Year Trend  
Total Drivers in Crashes by Age**



**5-Year Trend  
Total Drivers Coded Drinking by Age**



## 2017 - Bodily Alcohol Concentration (BAC) Results Among All Vehicle Drivers in Alcohol-Involved Crashes by Age

Age Group	Drivers				BAC Result Range for Drivers Coded Drinking				
	Total Drivers in Alcohol-Involved Crashes	Total Drivers Tested in all Crashes	Total Drivers Coded Drinking, Tested	Total Drivers Coded Drinking	BAC = 0.00	BAC 0.01 g/dL to 0.07 g/dL	BAC 0.08 g/dL to 0.16 g/dL	BAC 0.17 g/dL and Above	BAC Not Reported
0 - 15	0	0	0	0	0	0	0	0	0
16 - 20	23	18	12	15	0	1	5	2	7
21 - 24	57	41	34	45	2	6	6	9	22
25 - 64	246	203	149	198	2	16	39	42	99
65 +	17	16	9	10	1	1	1	3	4
Unknown	29	0	0	0	0	0	0	0	0
<b>Total</b>	<b>372</b>	<b>278</b>	<b>204</b>	<b>268</b>	<b>5</b>	<b>24</b>	<b>51</b>	<b>56</b>	<b>132</b>

Notes: BAC measured in grams (g) per deciliter (dL).

BAC may not be reported if drivers are not tested or if the results are not available immediately (as in the case of a blood test).

A driver may be coded by the officer as drinking even though no test is administered.

## Alcohol-Involved Crashes

In 2017, there were 372 drivers in alcohol-involved crashes; 268 (72.0%) of those drivers were coded as had-been-drinking by the officer on the crash form.

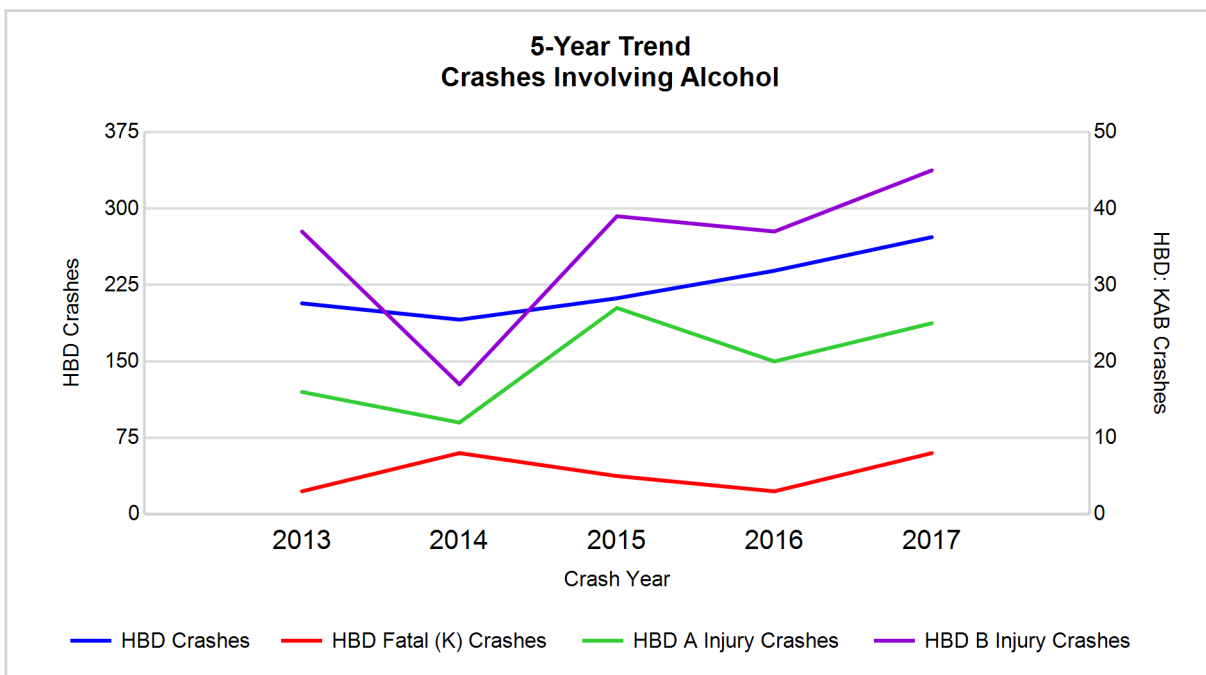
- 107 (39.9%) of the 268 drivers had a blood alcohol concentration (BAC) of 0.08 g/dL (grams per deciliter) or greater, and 56 (52.3%) of the 107 drivers had a BAC at or above 0.17 g/dL.
- 204 (76.1%) of the 268 drivers were coded as had-been-drinking and were tested for alcohol consumption.

## 5-Year Trend - Crashes Involving Alcohol

Year	All Crashes	HBD Crashes	% HBD	Fatal Crashes	HBD Fatal Crashes	% HBD	A Injury Crashes	HBD A Injury Crashes	% HBD	B Injury Crashes	HBD B Injury Crashes	% HBD
2013	6,536	207	3.2	20	3	15.0	113	16	14.2	318	37	11.6
2014	6,722	191	2.8	22	8	36.4	99	12	12.1	279	17	6.1
2015	6,646	212	3.2	18	5	27.8	115	27	23.5	285	39	13.7
2016	6,897	239	3.5	21	3	14.3	110	20	18.2	276	37	13.4
2017	6,989**	272**	3.9**	20	8	40.0**	134**	25	18.7	307	45**	14.7**

Note: \* Indicates that the most recent year is the lowest number or percentage reported in the 5-year period in that column

\*\* Indicates that the most recent year is the highest number or percentage reported in the 5-year period in that column



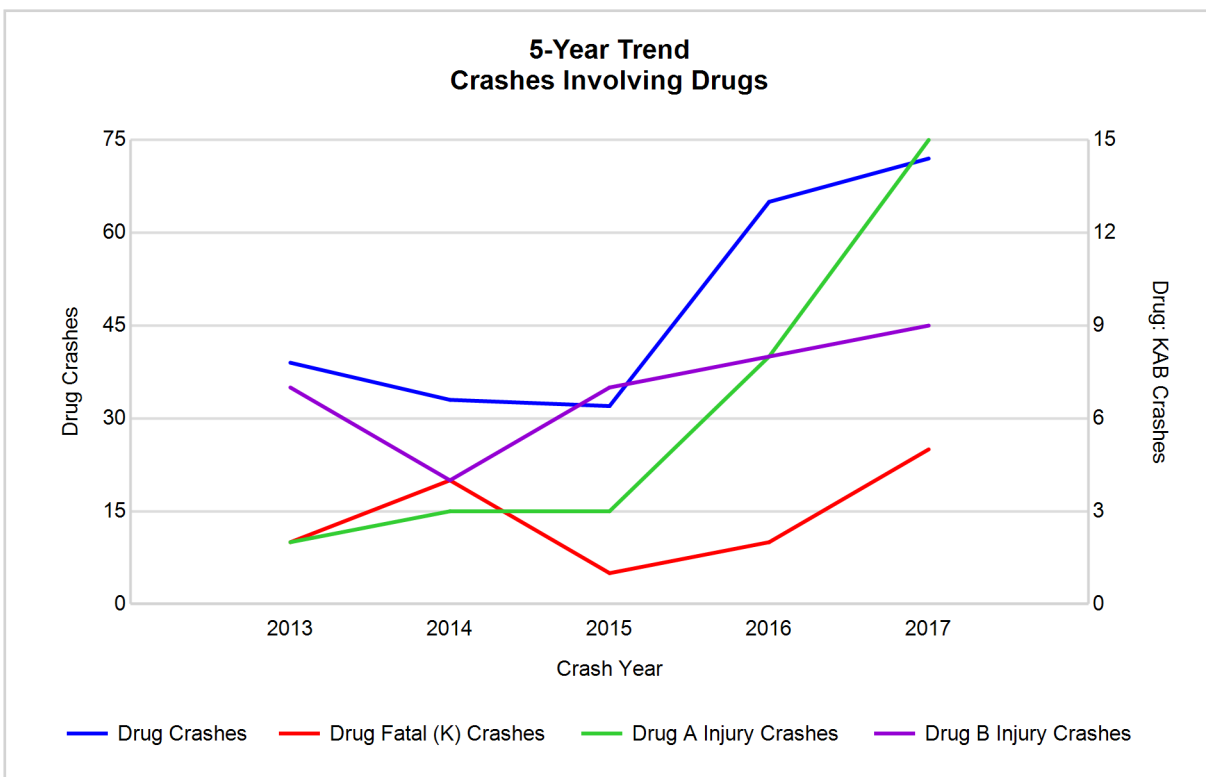
Note: Had-Been-Drinking (HBD)

## 5-Year Trend - Crashes Involving Drugs

Year	All Crashes	Drug Crashes	% Drug	Fatal Crashes	Drug Fatal Crashes	% Drug	A Injury Crashes	Drug A Injury Crashes	% Drug	B Injury Crashes	Drug B Injury Crashes	% Drug
2013	6,536	39	0.6	20	2	10.0	113	2	1.8	318	7	2.2
2014	6,722	33	0.5	22	4	18.2	99	3	3.0	279	4	1.4
2015	6,646	32	0.5	18	1	5.6	115	3	2.6	285	7	2.5
2016	6,897	65	0.9	21	2	9.5	110	8	7.3	276	8	2.9
2017	6,989**	72**	1.0**	20	5**	25.0**	134**	15**	11.2**	307	9**	2.9

Note: \* Indicates that the most recent year is the lowest number or percentage reported in the 5-year period in that column

\*\* Indicates that the most recent year is the highest number or percentage reported in the 5-year period in that column

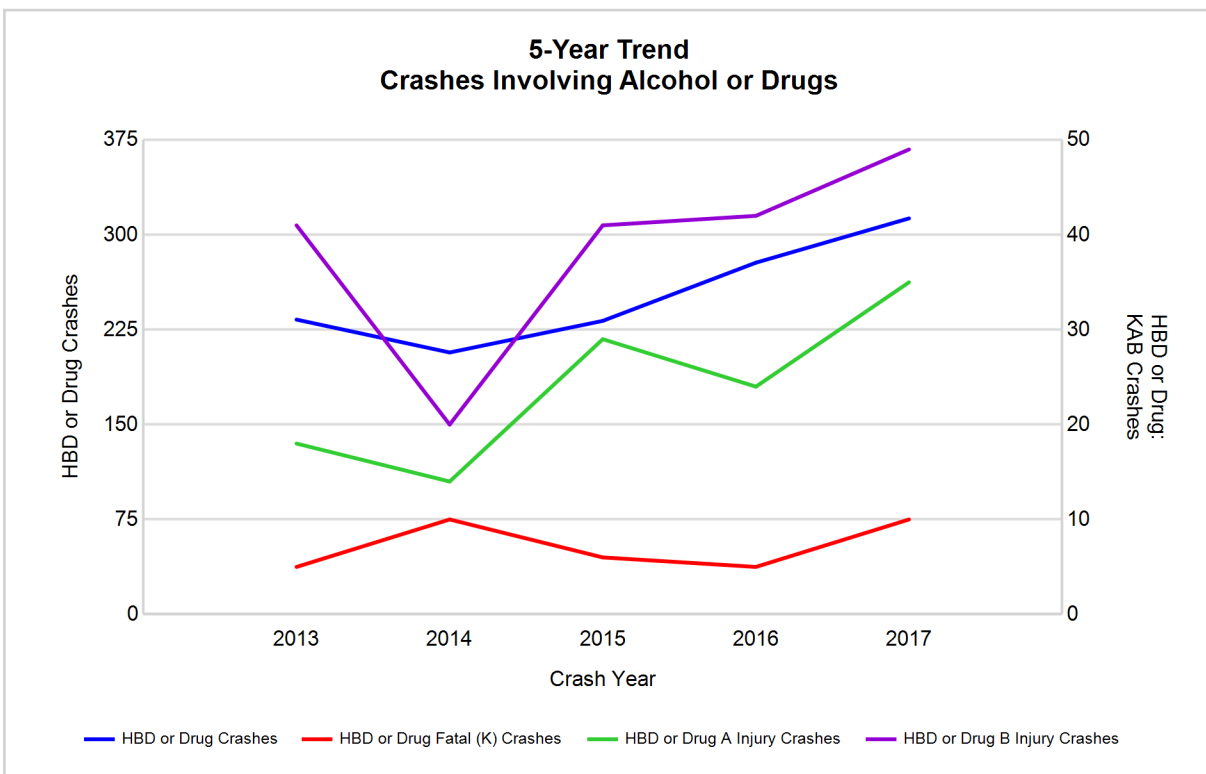


## 5-Year Trend - Crashes Involving Alcohol or Drugs

Year	All Crashes	HBD or Drug Crashes	% HBD or Drug	Fatal Crashes	HBD or Drug Fatal Crashes	% HBD or Drug	A Injury Crashes	HBD or Drug A Injury Crashes	% HBD or Drug	B Injury Crashes	HBD or Drug B Injury Crashes	% HBD or Drug
2013	6,536	233	3.6	20	5	25.0	113	18	15.9	318	41	12.9
2014	6,722	207	3.1	22	10	45.5	99	14	14.1	279	20	7.2
2015	6,646	232	3.5	18	6	33.3	115	29	25.2	285	41	14.4
2016	6,897	278	4.0	21	5	23.8	110	24	21.8	276	42	15.2
2017	6,989**	313**	4.5**	20	10	50.0**	134**	35**	26.1**	307	49**	16.0**

Note: \* Indicates that the most recent year is the lowest number or percentage reported in the 5-year period in that column

\*\* Indicates that the most recent year is the highest number or percentage reported in the 5-year period in that column



Note: Had-Been-Drinking (HBD)

## 2017 - Restraints Worn Among Vehicle Drivers and Injured Passengers by Vehicle Type

Vehicle Type	Total Occupants			Fatalities			A - Suspected Serious			B - Suspected Minor			C - Possible Injury			No Injury		
	Total	Used Restraint	%	Total	Used Restraint	%	Total	Used Restraint	%	Total	Used Restraint	%	Total	Used Restraint	%	Total	Used Restraint	%
Passenger car, SUV, van	8,323	7,646	91.9	15	8	53.3	103	89	86.4	263	234	89.0	734	687	93.6	6,900	6,628	96.1
Motor home	29	29	100.0	2	2	100.0	0	0	0.0	2	2	100.0	0	0	0.0	25	25	100.0
Pickup truck	1,630	1,495	91.7	0	0	0.0	19	17	89.5	64	53	82.8	97	91	93.8	1,388	1,334	96.1
Small truck under 10,000 lbs. GVWR	76	71	93.4	0	0	0.0	0	0	0.0	1	1	100.0	2	2	100.0	70	68	97.1
Motorcycle	91	56	61.5	3	2	66.7	23	11	47.8	33	20	60.6	18	12	66.7	14	11	78.6
Moped / goped	10	2	20.0	1	0	0.0	3	1	33.3	3	0	0.0	2	1	50.0	1	0	0.0
Go-cart / golf cart	0	0	0.0	0	0	0.0	0	0	0.0	0	0	0.0	0	0	0.0	0	0	0.0
Snowmobile	0	0	0.0	0	0	0.0	0	0	0.0	0	0	0.0	0	0	0.0	0	0	0.0
Off-Road Vehicle - ORV / All-Terrain Vehicle - ATV	3	1	33.3	1	0	0.0	0	0	0.0	1	0	0.0	0	0	0.0	1	1	100.0
Other	66	37	56.1	0	0	0.0	0	0	0.0	0	0	0.0	5	4	80.0	50	33	66.0
Truck/bus over 10,000 lbs.	247	225	91.1	0	0	0.0	2	0	0.0	8	5	62.5	9	5	55.6	222	215	96.8
Unknown	313	8	2.6	0	0	0.0	0	0	0.0	1	1	100.0	3	1	33.3	8	6	75.0
<b>Total</b>	<b>10,788</b>	<b>9,570</b>	<b>88.7</b>	<b>22</b>	<b>12</b>	<b>54.5</b>	<b>150</b>	<b>118</b>	<b>78.7</b>	<b>376</b>	<b>316</b>	<b>84.0</b>	<b>870</b>	<b>803</b>	<b>92.3</b>	<b>8,679</b>	<b>8,321</b>	<b>95.9</b>

Note: Restraint Use includes shoulder belt only used, lap belt only used, both lap and shoulder belts used, child restraint used, restraint failure, and helmet worn.

## 2017 - Restraints Worn Among Vehicle Drivers and Injured Passengers by Age

Age Group	Total Occupants			Fatalities			A - Suspected Serious			B - Suspected Minor			C - Possible Injury			No Injury		
	Total	Used Restraint	%	Total	Used Restraint	%	Total	Used Restraint	%	Total	Used Restraint	%	Total	Used Restraint	%	Total	Used Restraint	%
0 - 15	117	99	84.6	4	3	75.0	6	6	100.0	10	9	90.0	73	66	90.4	21	15	71.4
16 - 20	1,252	1,188	94.9	0	0	0.0	12	9	75.0	68	58	85.3	108	104	96.3	1,063	1,017	95.7
21 - 24	939	879	93.6	0	0	0.0	17	16	94.1	41	32	78.0	82	74	90.2	796	757	95.1
25 - 64	6,619	6,250	94.4	17	9	52.9	93	69	74.2	205	167	81.5	486	446	91.8	5,806	5,559	95.7
65 +	1,186	1,152	97.1	1	0	0.0	22	18	81.8	52	50	96.2	120	113	94.2	989	971	98.2
Unknown	675	2	0.3	0	0	0.0	0	0	0.0	0	0	0.0	1	0	0.0	4	2	50.0
<b>Total</b>	<b>10,788</b>	<b>9,570</b>	<b>88.7</b>	<b>22</b>	<b>12</b>	<b>54.5</b>	<b>150</b>	<b>118</b>	<b>78.7</b>	<b>376</b>	<b>316</b>	<b>84.0</b>	<b>870</b>	<b>803</b>	<b>92.3</b>	<b>8,679</b>	<b>8,321</b>	<b>95.9</b>

Note: Restraint Use includes shoulder belt only used, lap belt only used, both lap and shoulder belts used, child restraint used, restraint failure, and helmet worn.



## 5-Year Trend - Restraint Use Among Drivers

Restraint Use	2013			2014			2015			2016			2017		
	Drivers	Fatal Drivers	Injured Drivers	Drivers	Fatal Drivers	Injured Drivers	Drivers	Fatal Drivers	Injured Drivers	Drivers	Fatal Drivers	Injured Drivers	Drivers	Fatal Drivers	Injured Drivers
No belts available	37	0	9	57	0	9	34	0	9	31	0	5	31	0	5
Shoulder belt only used	228	1	18	158	0	12	43	0	4	171	0	24	80	0	15
Lap belt only used	21	0	1	48	0	7	51	0	6	68	0	7	50	0	4
Both lap & shoulder belts used	8,168	7	752	8,739	13	801	8,582	4	815	8,805	5	833	9,080	6	878
No belts used	128	3	23	132	2	25	145	2	22	107	6	21	75	5	28
Child restraint used	0	0	0	0	0	0	2	0	0	0	0	0	0	0	0
Child restraint not used, unavailable or improper use	0	0	0	0	0	0	0	0	0	0	0	0	0	0	0
Restraint failure	6	0	1	4	0	0	5	0	1	5	0	0	4	0	2
Restraint use unknown	214	4	29	176	2	25	202	1	42	533	1	47	593	1	51
Helmet worn	76	3	51	65	1	42	76	1	51	60	2	40	54	2	40
Helmet not worn	22	0	16	30	1	19	35	3	24	47	4	34	33	2	27
Helmet use unknown	11	0	8	8	0	5	10	0	7	3	0	2	6	0	6
Uncoded & errors	467	0	0	554	0	1	582	0	0	500	0	0	436	0	0
<b>Total</b>	<b>9,378</b>	<b>18</b>	<b>908</b>	<b>9,971</b>	<b>19</b>	<b>946</b>	<b>9,767</b>	<b>11</b>	<b>981</b>	<b>10,330</b>	<b>18</b>	<b>1,013</b>	<b>10,442</b>	<b>16</b>	<b>1,056</b>

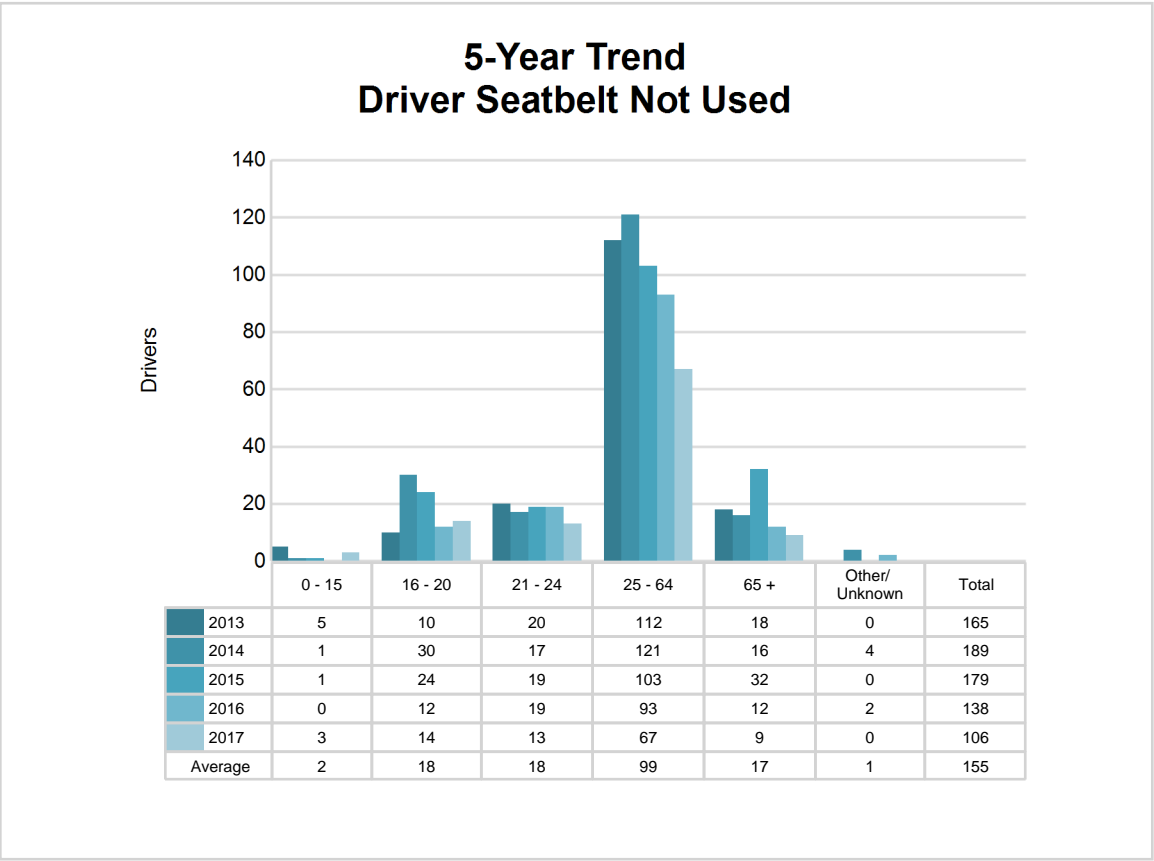
## 5-Year Trend - Restraint Use Among Drivers Coded Drinking

Restraint Use	2013			2014			2015			2016			2017		
	Drivers	Fatal Drivers	Injured Drivers	Drivers	Fatal Drivers	Injured Drivers	Drivers	Fatal Drivers	Injured Drivers	Drivers	Fatal Drivers	Injured Drivers	Drivers	Fatal Drivers	Injured Drivers
No belts available	2	0	2	3	0	0	4	0	1	2	0	1	1	0	0
Shoulder belt only used	4	0	1	3	0	2	0	0	0	3	0	1	1	0	1
Lap belt only used	0	0	0	0	0	0	1	0	1	1	0	0	1	0	1
Both lap & shoulder belts used	141	1	33	135	3	31	147	0	62	166	0	58	187	2	66
No belts used	12	0	7	11	1	7	13	2	6	12	2	7	16	3	9
Child restraint used	0	0	0	0	0	0	0	0	0	0	0	0	0	0	0
Child restraint not used, unavailable or improper use	0	0	0	0	0	0	0	0	0	0	0	0	0	0	0
Restraint failure	1	0	1	2	0	0	1	0	1	0	0	0	0	0	0
Restraint use unknown	40	0	10	29	2	5	32	0	20	47	0	15	53	1	21
Helmet worn	3	1	2	3	0	2	4	0	4	2	0	2	3	1	2
Helmet not worn	2	0	1	3	0	2	4	0	4	6	0	6	5	0	5
Helmet use unknown	1	0	1	1	0	1	1	0	1	0	0	0	1	0	1
Uncoded & errors	0	0	0	0	0	0	0	0	0	0	0	0	0	0	0
<b>Total</b>	<b>206</b>	<b>2</b>	<b>58</b>	<b>190</b>	<b>6</b>	<b>50</b>	<b>207</b>	<b>2</b>	<b>100</b>	<b>239</b>	<b>2</b>	<b>90</b>	<b>268</b>	<b>7</b>	<b>106</b>

5-Year Trend - Seatbelt Not Used Among Drivers by Age

Age Group	2013			2014			2015			2016			2017		
	Drivers	Fatal Drivers	Injured Drivers	Drivers	Fatal Drivers	Injured Drivers	Drivers	Fatal Drivers	Injured Drivers	Drivers	Fatal Drivers	Injured Drivers	Drivers	Fatal Drivers	Injured Drivers
0 - 15	5	0	2	1	0	0	1	0	1	0	0	0	3	0	1
16 - 20	10	0	2	30	0	5	24	0	5	12	1	2	14	0	3
21 - 24	20	0	1	17	1	3	19	0	4	19	1	5	13	0	5
25 - 64	112	2	25	121	1	23	103	2	14	93	3	17	67	5	22
65 +	18	1	2	16	0	3	32	0	7	12	1	2	9	0	2
Unknown	0	0	0	4	0	0	0	0	0	2	0	0	0	0	0
Total	165	3	32	189	2	34	179	2	31	138	6	26	106	5	33

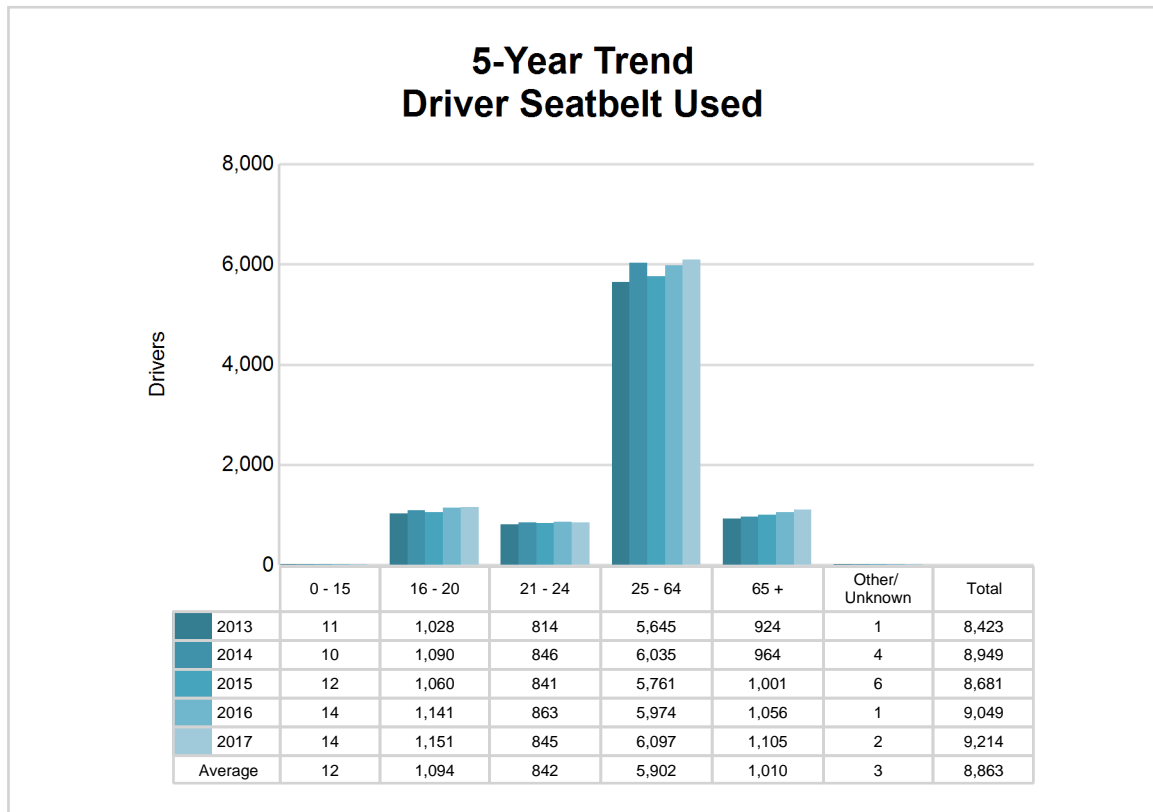
Note: Seatbelt Not Used includes no belts available or no belts used.



## 5-Year Trend - Seatbelt Used Among Drivers by Age

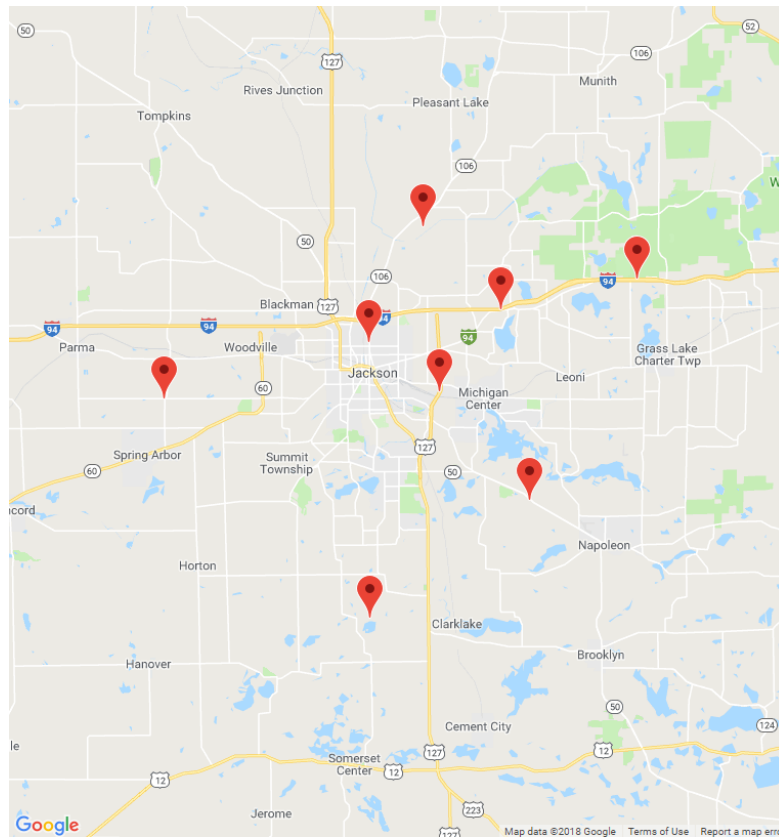
Age Group	2013			2014			2015			2016			2017		
	Drivers	Fatal Drivers	Injured Drivers	Drivers	Fatal Drivers	Injured Drivers	Drivers	Fatal Drivers	Injured Drivers	Drivers	Fatal Drivers	Injured Drivers	Drivers	Fatal Drivers	Injured Drivers
0 - 15	11	0	1	10	0	2	12	0	2	14	0	1	14	0	1
16 - 20	1,028	0	129	1,090	1	109	1,060	1	126	1,141	2	127	1,151	0	134
21 - 24	814	1	80	846	1	93	841	1	79	863	0	79	845	0	89
25 - 64	5,645	6	458	6,035	7	509	5,761	1	512	5,974	3	547	6,097	6	541
65 +	924	1	104	964	4	107	1,001	1	107	1,056	0	110	1,105	0	134
Unknown	1	0	0	4	0	0	6	0	0	1	0	0	2	0	0
<b>Total</b>	<b>8,423</b>	<b>8</b>	<b>772</b>	<b>8,949</b>	<b>13</b>	<b>820</b>	<b>8,681</b>	<b>4</b>	<b>826</b>	<b>9,049</b>	<b>5</b>	<b>864</b>	<b>9,214</b>	<b>6</b>	<b>899</b>

Note: Seatbelt Used includes shoulder belt only used, lap belt only used, both lap and shoulder belts used, and restraint failure.



## 5-Year Trend - Drivers in Crashes by Hazardous Action

Hazardous Action	2013		2014		2015		2016		2017	
	Total Drivers in Crashes	Drivers in Fatal Crashes	Total Drivers in Crashes	Drivers in Fatal Crashes	Total Drivers in Crashes	Drivers in Fatal Crashes	Total Drivers in Crashes	Drivers in Fatal Crashes	Total Drivers in Crashes	Drivers in Fatal Crashes
None	5,377	12	5,545	19	5,438	11	5,640	14	5,672	12
Speed too fast	606	3	842	7	713	4	662	8	684	4
Speed too slow	16	1	15	0	9	0	3	0	7	0
Failed to yield	719	2	816	3	798	0	795	1	817	1
Disregard traffic control	134	1	127	4	125	0	162	1	156	1
Drove wrong way	11	0	5	0	12	0	1	0	7	2
Drove left of center	40	2	44	2	46	2	50	1	47	3
Improper passing	33	0	30	0	41	0	38	0	49	1
Improper lane use	187	1	201	0	163	1	209	0	197	0
Improper turn	80	0	79	0	58	0	62	0	46	0
Improper/no signal	14	0	19	0	6	0	9	0	3	0
Improper backing	184	0	165	0	155	0	174	0	202	0
Unable to stop in assured clear distance	936	3	1,030	1	961	1	1,166	5	1,118	1
Other	258	2	257	0	294	0	292	2	350	1
Unknown	469	1	477	0	530	2	260	2	279	3
Reckless driving	56	0	47	1	73	0	81	1	60	1
Careless/negligent driving	257	3	268	2	295	5	264	1	205	0
Uncoded & errors	1	0	4	0	50	0	462	2	543	0
<b>Total</b>	<b>9,378</b>	<b>31</b>	<b>9,971</b>	<b>39</b>	<b>9,767</b>	<b>26</b>	<b>10,330</b>	<b>38</b>	<b>10,442</b>	<b>30</b>



The picture above represents all 2017 alcohol-involved fatal crashes in Post 13.

In 2017, there were 272 alcohol-involved crashes in Post 13:

8	K - Fatal Crashes
25	A - Suspected Serious Injury Crashes
45	B - Suspected Minor Injury Crashes
49	C - Possible Injury Crashes
145	O - Property Damage Only/No Injury Crashes

### Office of Highway Safety Planning

---

Physical Address:  
7150 Harris Drive  
Dimondale, Michigan 48821

Mailing Address:  
P.O. Box 30634  
Lansing, Michigan 48909

Phone: (517) 284-3112  
Fax: (517) 284-3151

Find us on the web:  
[MichiganTrafficCrashFacts.org](http://MichiganTrafficCrashFacts.org)

