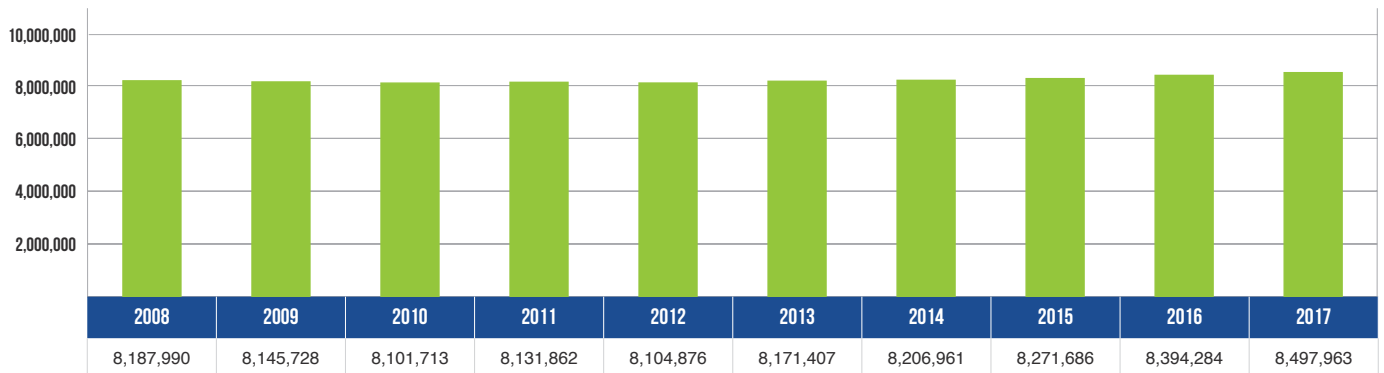


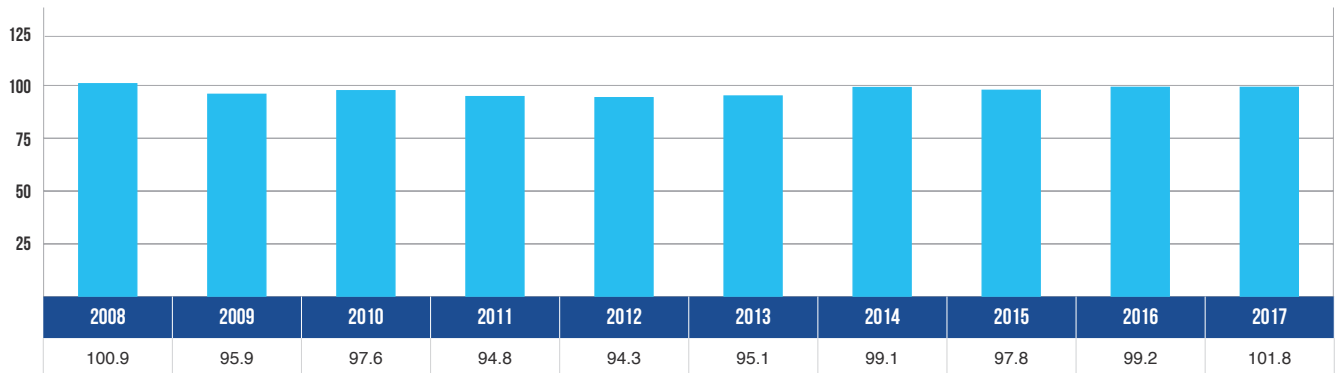
10 YEAR TRENDS-STATEWIDE

VEHICLE REGISTRATIONS



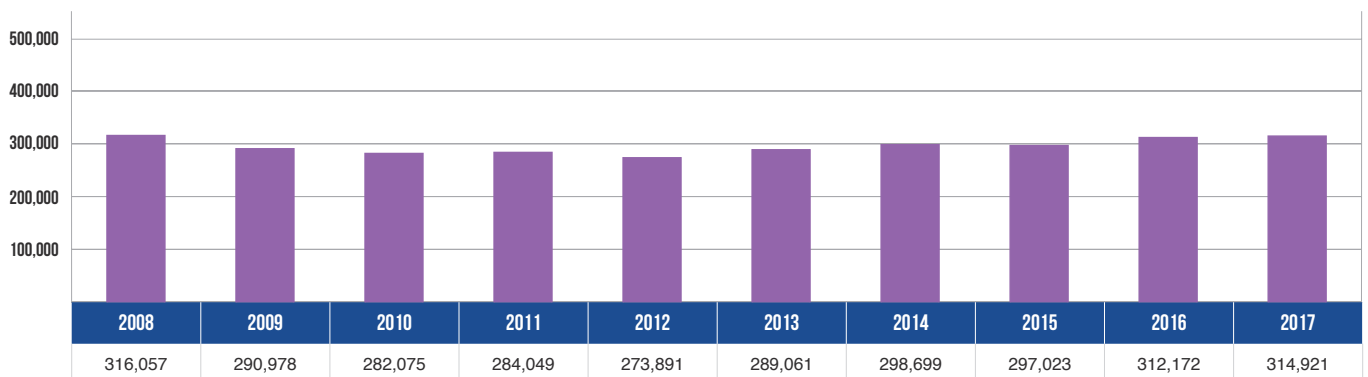
Vehicle registrations increased 3.8 percent over the 10-year period.

VEHICLE MILES TRAVELED (BILLIONS)



Vehicle miles traveled increased 0.9 percent over the 10-year period.

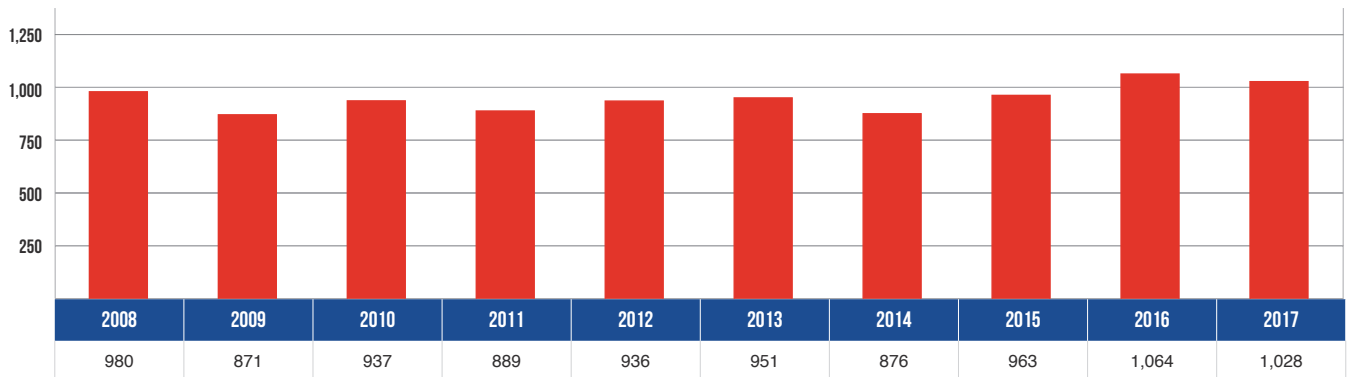
CRASHES



There were 314,921 total crashes statewide in 2017 – a 0.4 percent decrease from 2008.

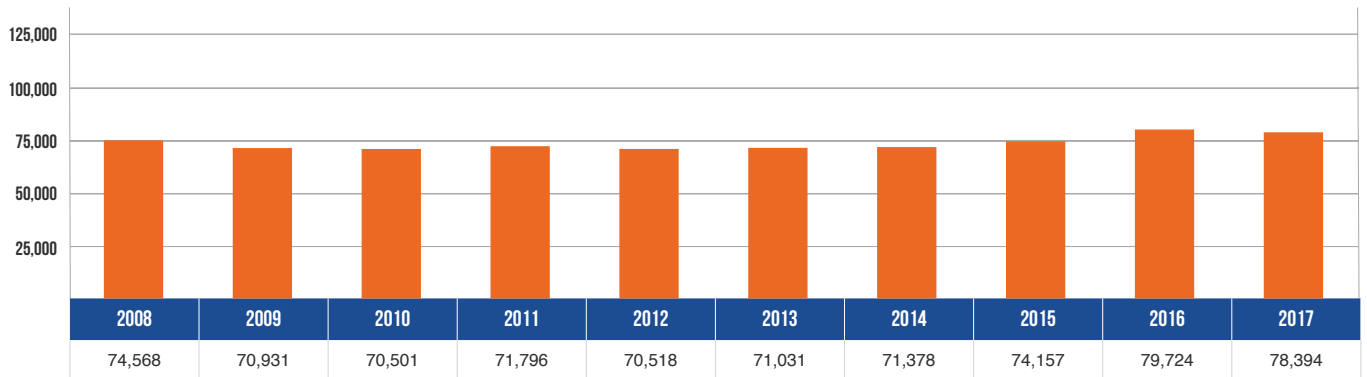
10 YEAR TRENDS-STATEWIDE (CONTINUED)

DEATHS



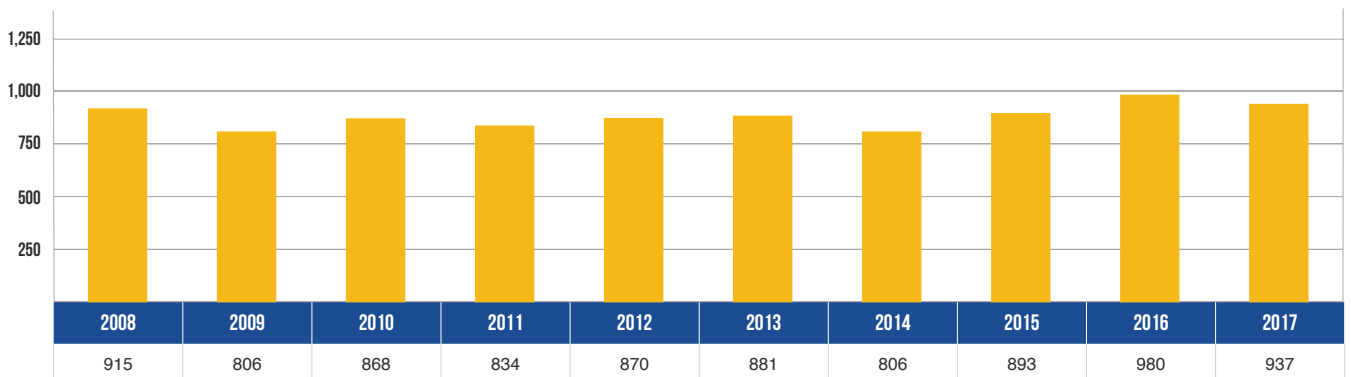
In 2017, 1,028 people died in motor vehicle crashes – an increase of 4.9 percent from 2008.

INJURIES



In 2017, 78,394 people received injuries in motor vehicle crashes – up 5.1 percent from 74,568 in 2008.

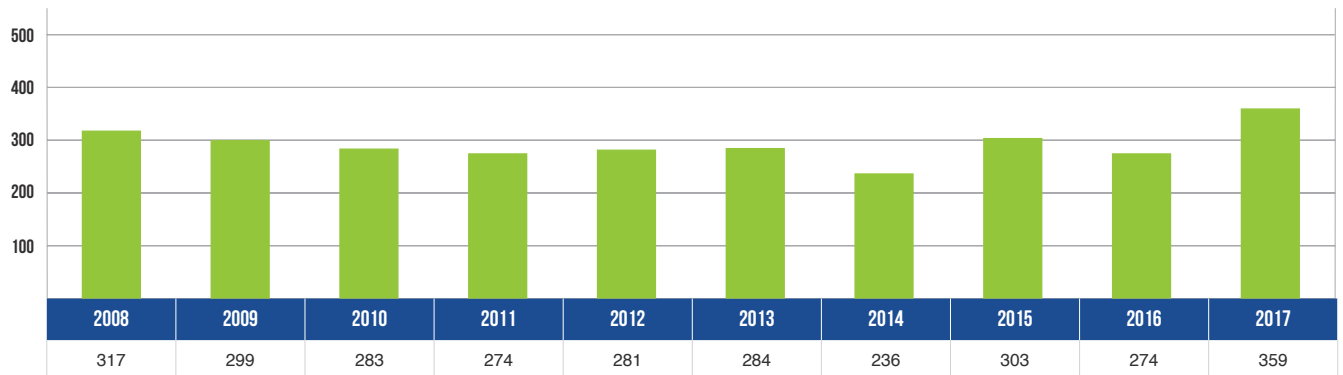
FATAL CRASHES



In 2017, there were 937 fatal crashes – up 2.4 percent from 915 in 2008.

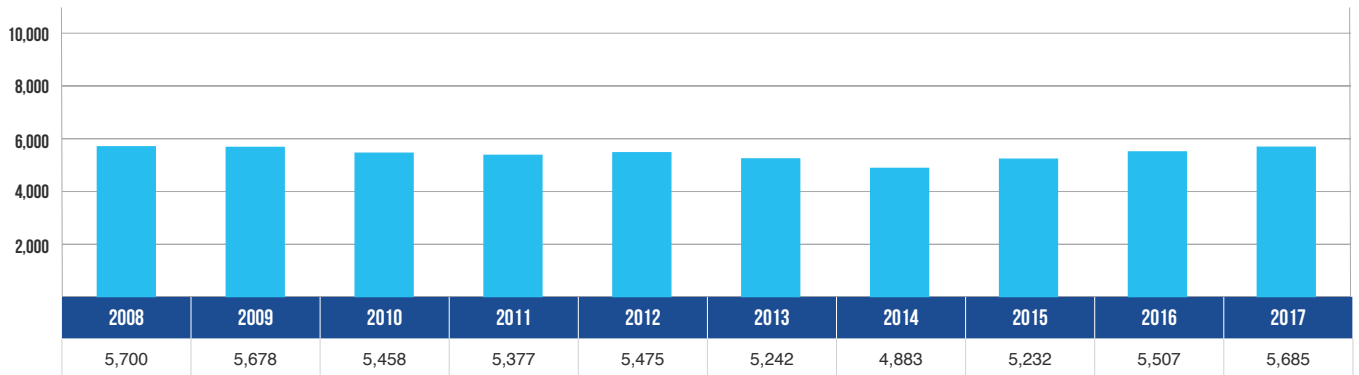
10 YEAR TRENDS-STATEWIDE (CONTINUED)

ALCOHOL-INVOLVED DEATHS



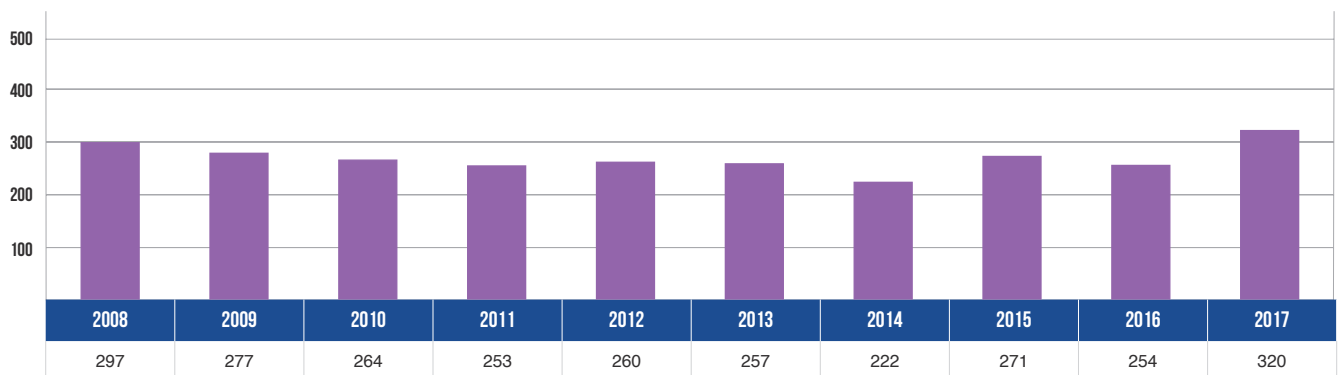
There were 359 deaths in alcohol-involved crashes in 2017 – up 13.2 percent from 2008.

ALCOHOL-INVOLVED INJURIES



There were 5,685 injuries in alcohol-involved crashes in 2017 – down 0.3 percent from 2008.

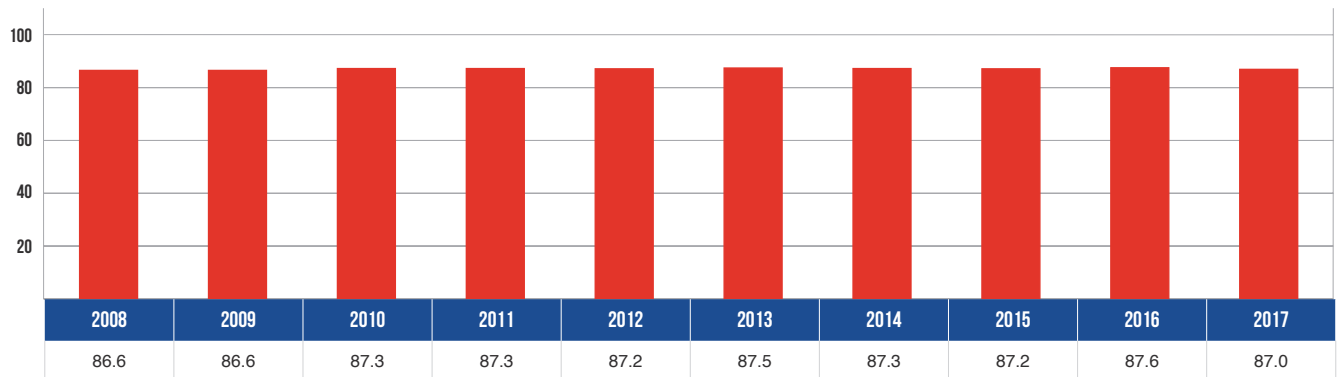
ALCOHOL-INVOLVED FATAL CRASHES



There were 320 injuries in alcohol-involved fatal crashes in 2017 – up 7.7 percent from 2008.

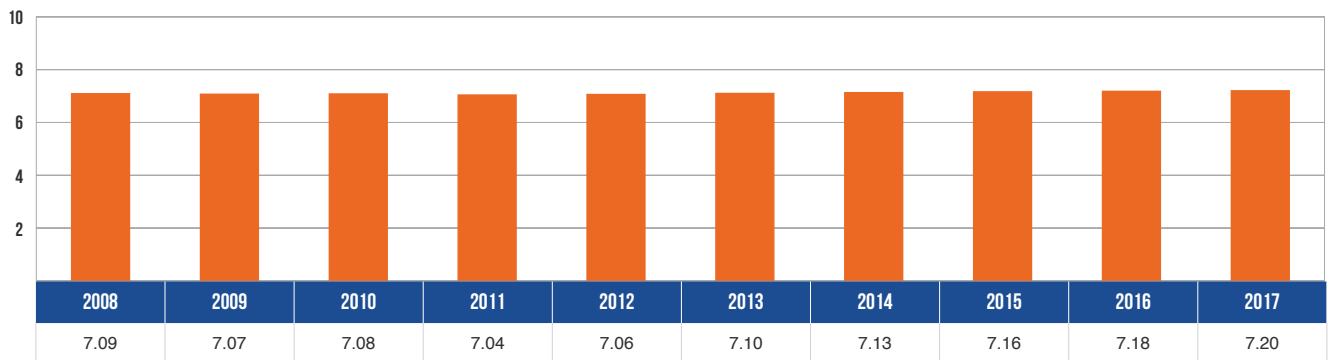
10 YEAR TRENDS-STATEWIDE (CONTINUED)

RESTRAINT USAGE IN CRASHES



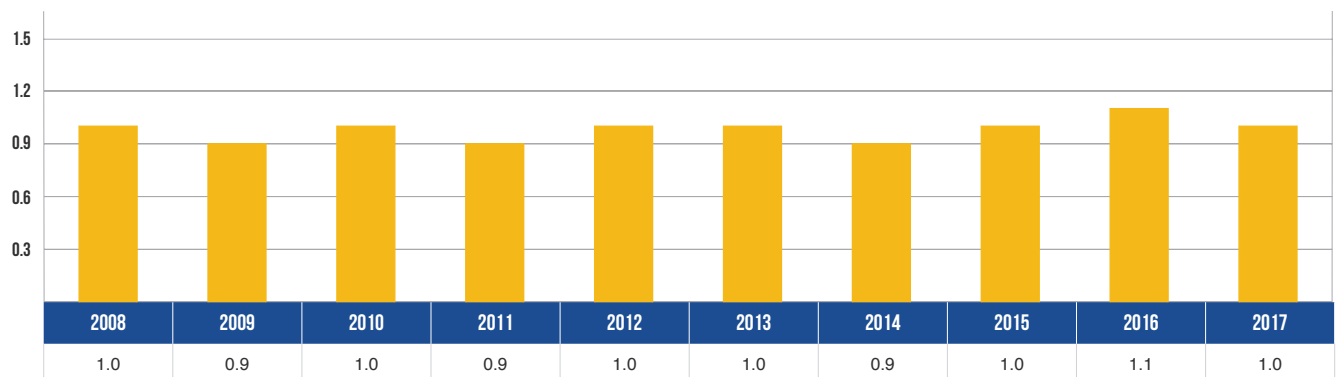
The percentage of motor vehicle occupants using restraints as reported by police in traffic crashes increased 0.5 percent over the last ten years.

DRIVERS IN MICHIGAN (MILLIONS)



There were 7,200,401 licensed drivers on Michigan roadways in 2017 – an increase of 1.6 percent from 2008.

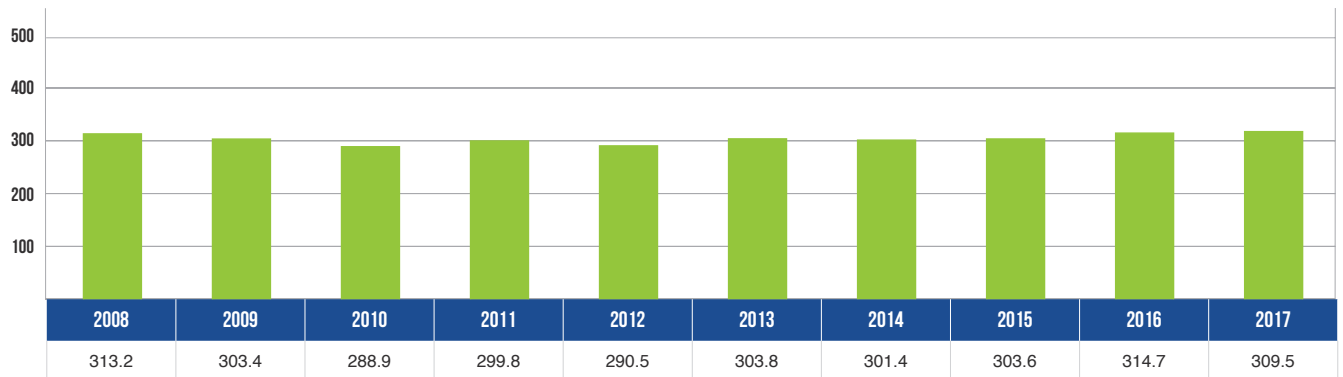
FATALITIES PER 100 MILLION VEHICLE MILES TRAVELED



The death rate of 1.01 fatalities per 100 million VMT in 2017 was an increase of 4.0% from the death rate of 0.97 in 2008.

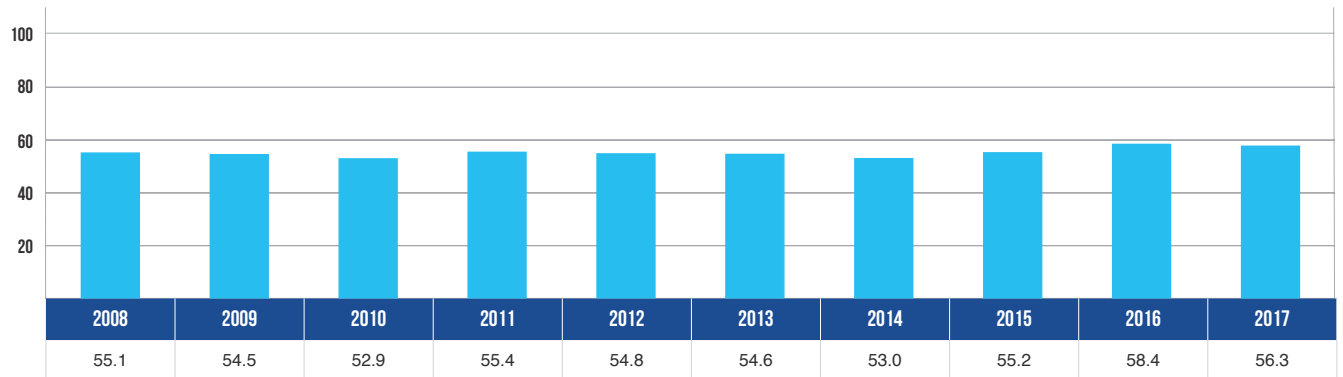
10 YEAR TRENDS-STATEWIDE (CONTINUED)

TOTAL CRASHES PER 100 MILLION VEHICLE MILES TRAVELED



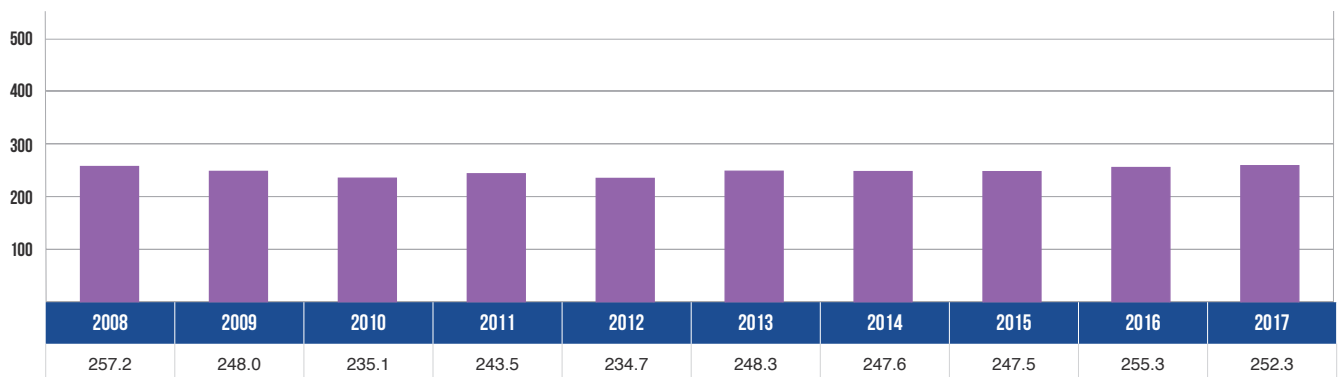
The total crash rate of 309.5 crashes in 2017 was a 1.2 percent decrease from 2008.

INJURY CRASHES PER 100 MILLION VEHICLE MILES TRAVELED



The injury crash rate of 56.3 crashes in 2017 was a 2.2 percent increase from 2008.

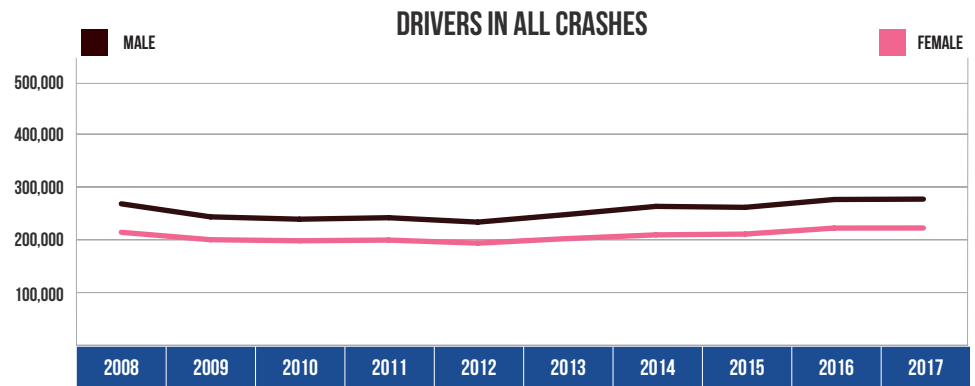
PROPERTY DAMAGE CRASHES PER 100 MILLION VEHICLE MILES TRAVELED



The property damage crash rate of 252.3 in 2017 was a 1.9 percent decrease from 2008.

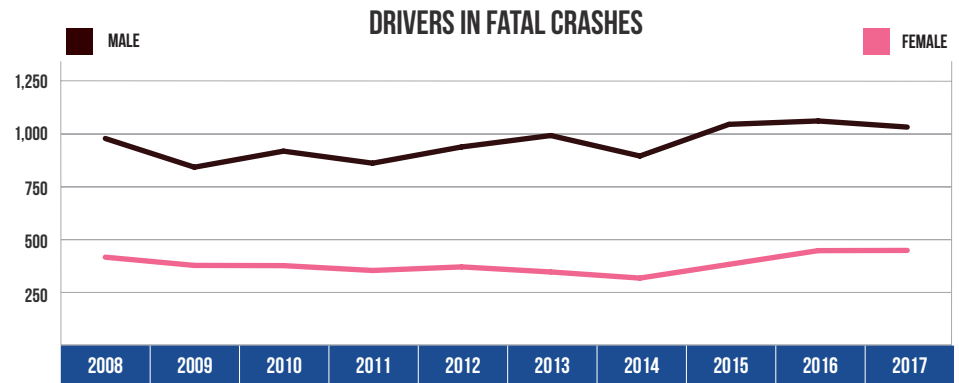
10 YEAR TRENDS-STATEWIDE (CONTINUED)

DRIVERS IN ALL CRASHES		
Year	Male	Female
2008	267,186	213,223
2009	242,490	199,166
2010	238,048	197,183
2011	240,850	198,488
2012	232,475	192,605
2013	246,908	201,264
2014	262,359	208,359
2015	260,508	209,843
2016	275,382	221,200
2017	276,112	221,365



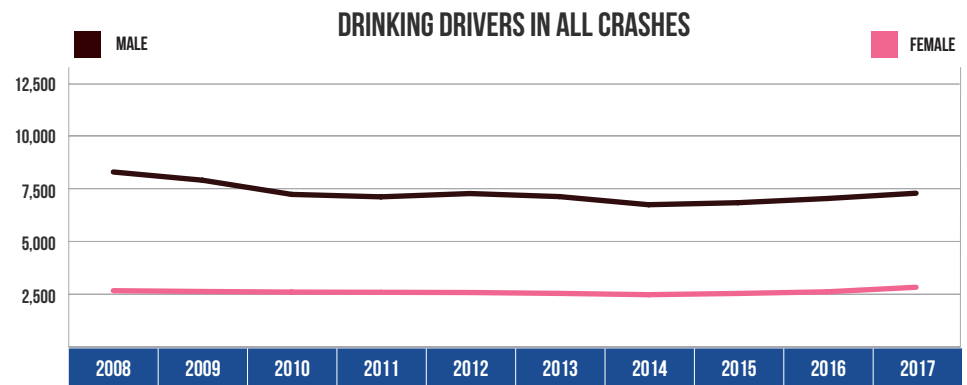
Male drivers accounted for 55.5 percent of all drivers in crashes during 2017, which was down slightly from 55.6 percent in 2008. Female drivers accounted for 44.5 percent of all drivers in crashes during 2017, which was up slightly from 44.4 percent in 2008.

DRIVERS IN FATAL CRASHES		
Year	Male	Female
2008	976	414
2009	840	375
2010	916	374
2011	859	351
2012	936	368
2013	990	344
2014	893	315
2015	1,043	380
2016	1,059	445
2017	1,030	446



Male drivers made up 69.8 percent of all drivers in fatal crashes in 2017, which was down from 70.2 percent in 2008. Female drivers made up 30.2 percent of all drivers in fatal crashes in 2017, which was up from 29.8 percent in 2008.

DRINKING DRIVERS IN ALL CRASHES		
Year	Male	Female
2008	8,270	2,650
2009	7,881	2,613
2010	7,209	2,584
2011	7,094	2,574
2012	7,250	2,563
2013	7,105	2,522
2014	6,721	2,461
2015	6,816	2,519
2016	7,014	2,597
2017	7,266	2,813

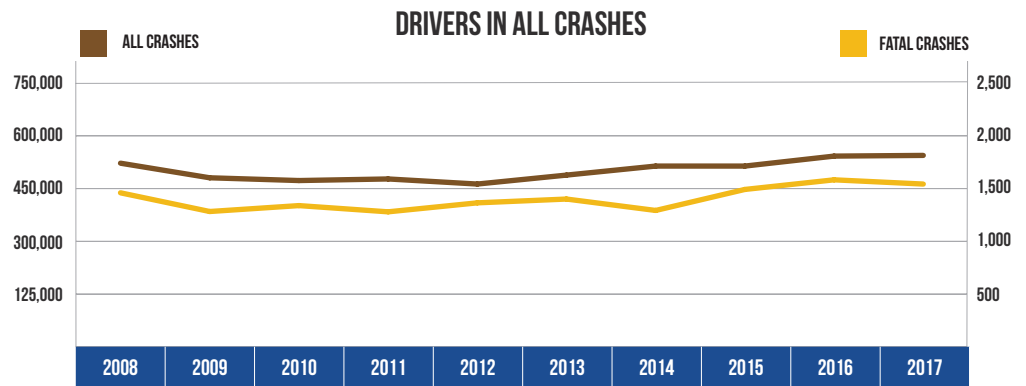


In 2017, males represented 72.1 percent of all drinking drivers, which was down from 75.7 percent in 2008. Females represented 27.9 percent of all drinking drivers in 2017, which was up from 24.3 percent in 2008.

Note: 42,910 drivers in all crashes, 54 drivers in fatal crashes, and six drinking drivers were coded as unknown gender in 2017 and are not included in the tables.

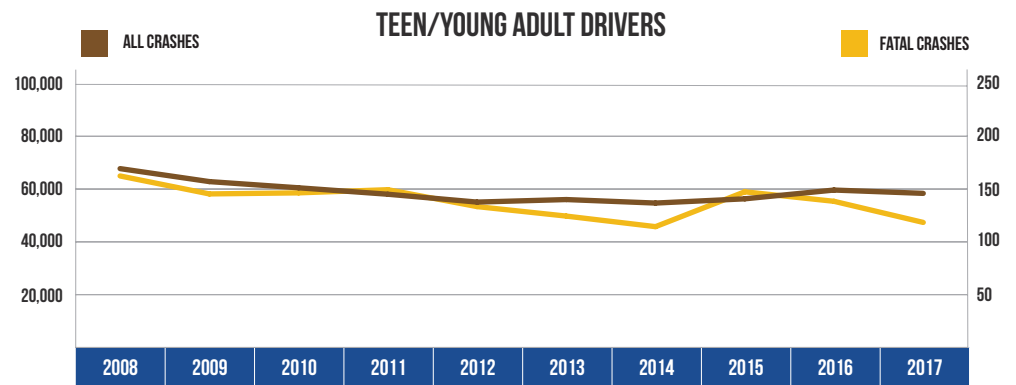
10 YEAR TRENDS-STATEWIDE (CONTINUED)

ALL CRASHES		
Year	All Crashes	Fatal Crashes
2008	518,240	1,447
2009	476,801	1,270
2010	468,968	1,326
2011	473,501	1,267
2012	459,030	1,352
2013	484,446	1,388
2014	510,086	1,280
2015	510,074	1,479
2016	538,412	1,570
2017	540,387	1,530



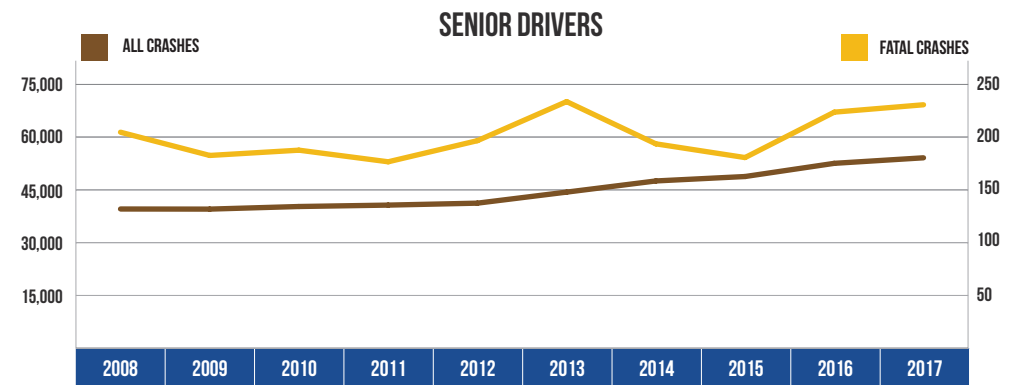
The number of drivers involved in all crashes increased 4.3 percent over the 10-year period. The number of drivers involved in fatal crashes increased 5.7 percent over the 10-year period.

TEEN/YOUNG ADULT DRIVERS (AGE 16-20)		
Year	All Crashes	Fatal Crashes
2008	67,982	163
2009	63,069	146
2010	60,721	147
2011	58,279	150
2012	55,307	134
2013	56,264	125
2014	54,935	115
2015	56,544	148
2016	59,865	139
2017	58,607	119



Teen/young adult drivers (age 16-20) represented 6.5 percent of the licensed drivers in 2017. The number of teen/young adult drivers in all crashes has decreased by 13.8 percent since 2008. Their involvement in fatal crashes has decreased 27.0 percent during the same time period.

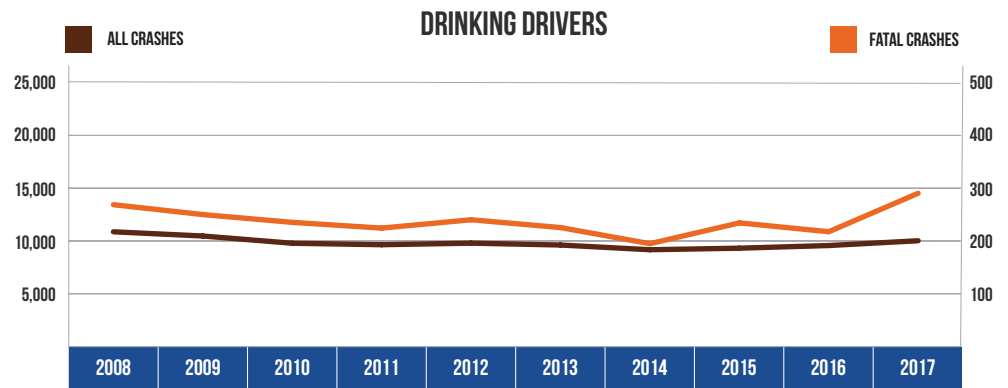
SENIOR DRIVERS (AGE 65 & OVER)		
Year	All Crashes	Fatal Crashes
2008	39,388	204
2009	39,357	182
2010	40,096	187
2011	40,495	176
2012	41,047	196
2013	44,183	233
2014	47,356	193
2015	48,615	180
2016	52,362	223
2017	53,934	230



Senior drivers (age 65 and over) represented 20.5 percent of the licensed drivers in 2017. The number of drivers age 65 and over in all crashes has increased 36.9 percent since 2008. Senior driver involvement in fatal crashes increased 12.7 percent during the same time period.

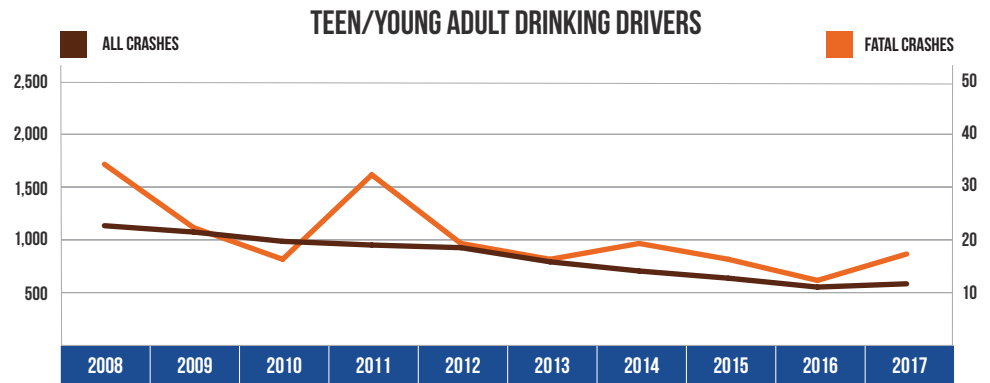
10 YEAR TRENDS-STATEWIDE (CONTINUED)

DRINKING DRIVERS		
Year	All Crashes	Fatal Crashes
2008	10,948	271
2009	10,542	252
2010	9,843	237
2011	9,701	226
2012	9,853	242
2013	9,673	227
2014	9,218	196
2015	9,368	236
2016	9,623	219
2017	10,085	293



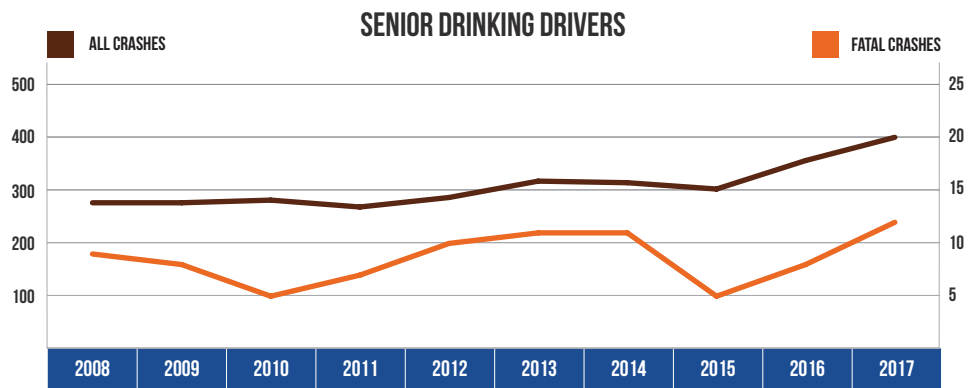
Drinking driver involvement in all crashes decreased by 7.9 percent from 2008. Drinking driver involvement in fatal crashes increased by 8.1 percent from 2008.

TEEN/YOUNG ADULT DRINKING DRIVERS (AGE 16-20)		
Year	All Crashes	Fatal Crashes
2008	1,118	34
2009	1,058	22
2010	970	16
2011	935	32
2012	910	19
2013	776	16
2014	689	19
2015	621	16
2016	537	12
2017	568	17



The number of teen/young adult drinking drivers (age 16-20) in all crashes decreased by 49.2 percent, and their involvement in fatal crashes decreased by 50.0 percent from 2008.

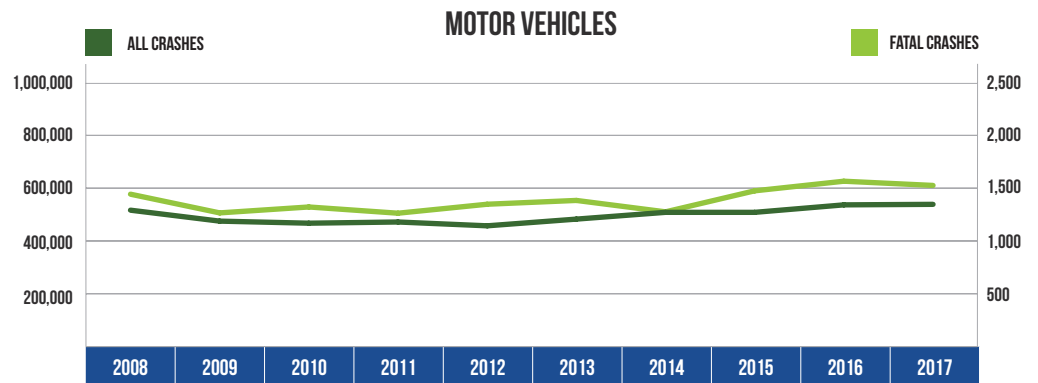
SENIOR DRINKING DRIVERS (AGE 65 & OVER)		
Year	All Crashes	Fatal Crashes
2008	277	9
2009	277	8
2010	282	5
2011	269	7
2012	287	10
2013	318	11
2014	315	11
2015	303	5
2016	357	8
2017	401	12



The number of senior drinking drivers (age 65 and over) in all crashes increased by 44.8 percent from 2008. Their involvement in fatal crashes increased by 33.3 percent from 2008.

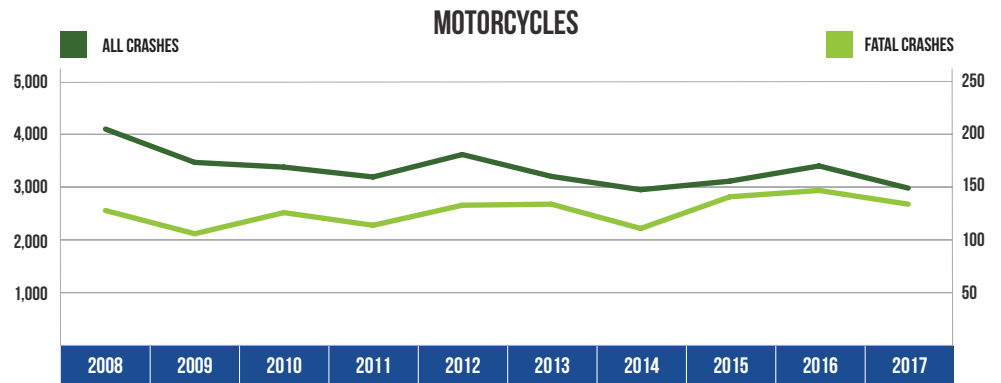
10 YEAR TRENDS-STATEWIDE (CONTINUED)

MOTOR VEHICLES		
Year	All Crashes	Fatal Crashes
2008	518,240	1,447
2009	476,801	1,270
2010	468,968	1,326
2011	473,501	1,267
2012	459,030	1,352
2013	484,446	1,388
2014	510,086	1,280
2015	510,074	1,479
2016	538,412	1,570
2017	540,387	1,530



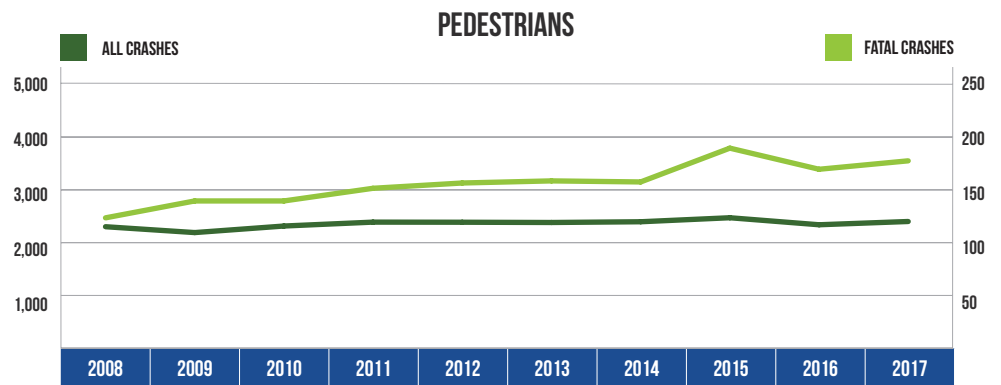
There were 540,387 motor vehicles involved in all crashes in 2017, up 4.3 percent from 2008. There were 1,530 motor vehicles involved in fatal crashes in 2017, up 5.7 percent from 2008.

MOTORCYCLES		
Year	All Crashes	Fatal Crashes
2008	4,082	127
2009	3,451	105
2010	3,362	125
2011	3,175	113
2012	3,600	132
2013	3,186	133
2014	2,934	110
2015	3,096	140
2016	3,384	146
2017	2,964	133



There were 2,964 motorcycles involved in crashes in 2017, a 27.4 percent decrease from 2008. There were 133 motorcycles involved in fatal crashes in 2017, up 4.3 percent from 2008.

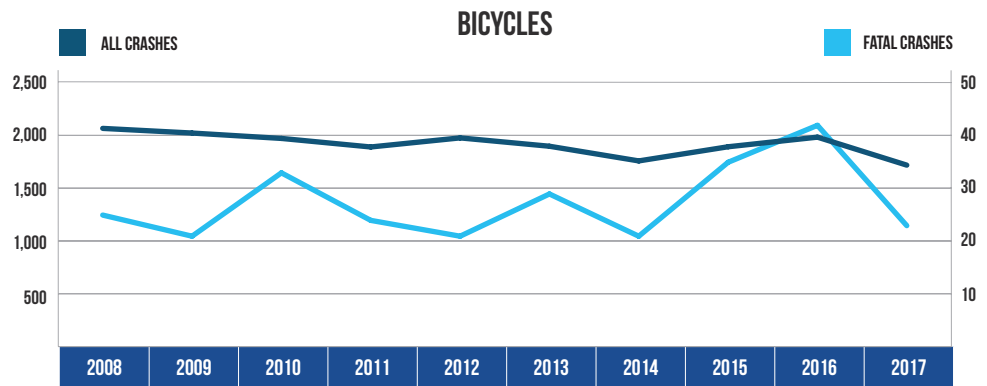
PEDESTRIANS		
Year	All Crashes	Fatal Crashes
2008	2,312	124
2009	2,201	140
2010	2,325	140
2011	2,399	152
2012	2,397	157
2013	2,392	159
2014	2,406	158
2015	2,482	190
2016	2,349	170
2017	2,411	178



There were 2,411 pedestrians involved in crashes in 2017, up 4.3 percent from 2008. There were 178 pedestrians involved in fatal crashes in 2017, up 43.5 percent from 2008.

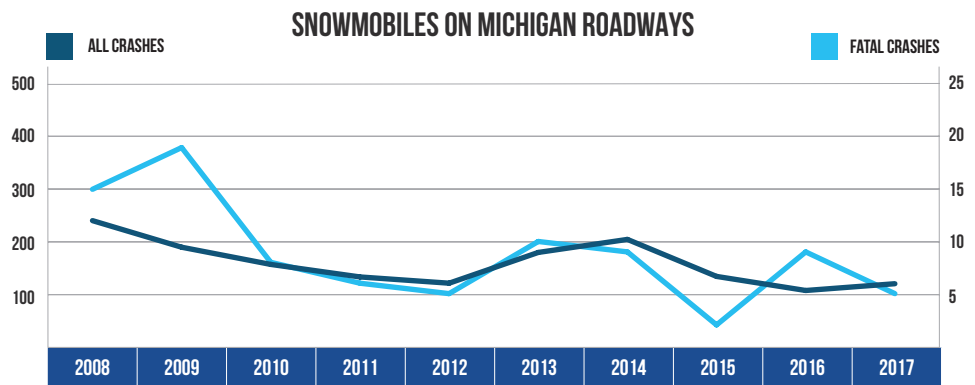
10 YEAR TRENDS-STATEWIDE (CONTINUED)

BICYCLES		
Year	All Crashes	Fatal Crashes
2008	2,071	25
2009	2,027	21
2010	1,976	33
2011	1,895	24
2012	1,981	21
2013	1,902	29
2014	1,763	21
2015	1,897	35
2016	1,988	42
2017	1,723	23



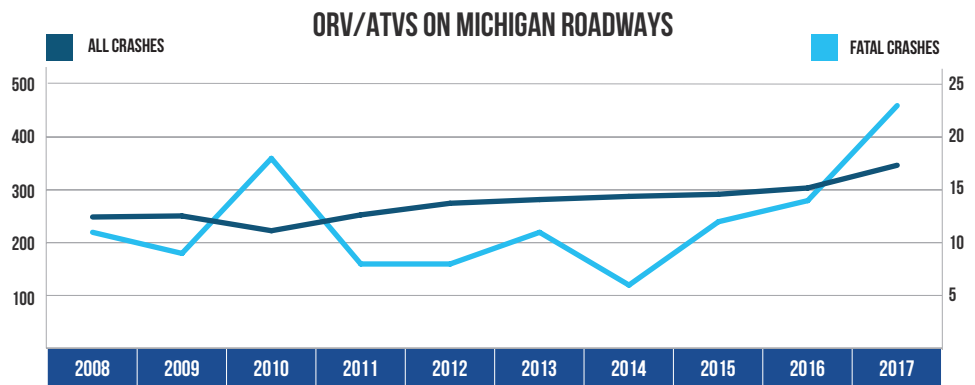
There were 1,723 bicycles involved in crashes in 2017, down 16.8 percent from 2008. There were 23 bicycles involved in fatal crashes in 2017, down 8.0 percent from 2008.

SNOWMOBILES ON MICHIGAN ROADWAYS		
Year	All Crashes	Fatal Crashes
2008	240	15
2009	189	19
2010	156	8
2011	132	6
2012	120	5
2013	179	10
2014	204	9
2015	133	2
2016	106	9
2017	119	5



There were 119 snowmobiles in crashes on roadways in 2017, down 50.4 percent from 2008. There were 5 snowmobiles in fatal crashes, down 66.7 percent from 2008.

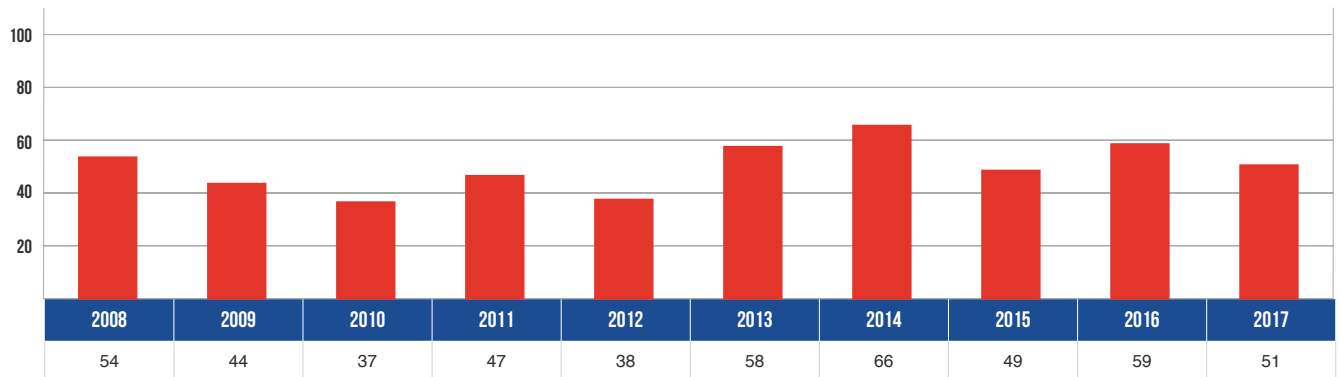
ORV/ATVS ON MICHIGAN ROADWAYS		
Year	All Crashes	Fatal Crashes
2008	249	11
2009	251	9
2010	223	18
2011	253	8
2012	275	8
2013	282	11
2014	288	6
2015	292	12
2016	304	14
2017	347	23



There were 347 ORV/ATVs in crashes on roadways in 2017, up 39.4 percent from 2008. There were 23 ORV/ATVs in fatal crashes, up 109.1 percent from 2008.

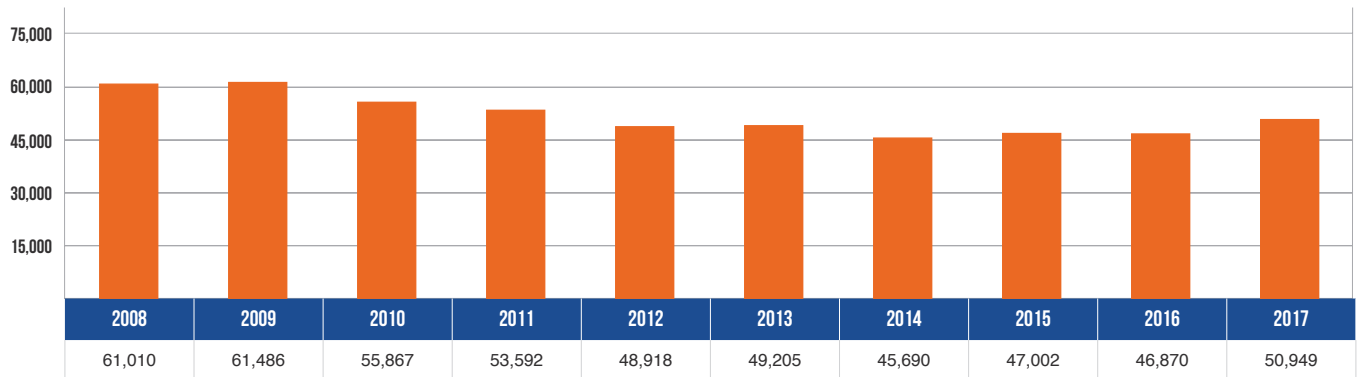
10 YEAR TRENDS-STATEWIDE (CONTINUED)

VEHICLE-TRAIN CRASHES



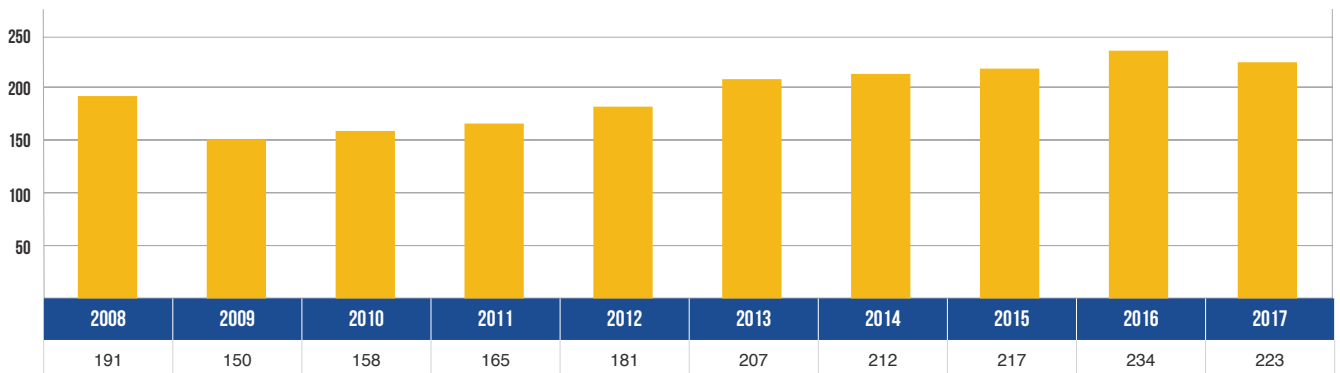
There were 51 vehicle-train crashes in 2017 – a decrease of 5.6 percent in the 10-year period.

VEHICLE-DEER CRASHES



There were 50,949 vehicle-deer crashes in 2017 – a decrease of 16.5 percent in the 10-year period.

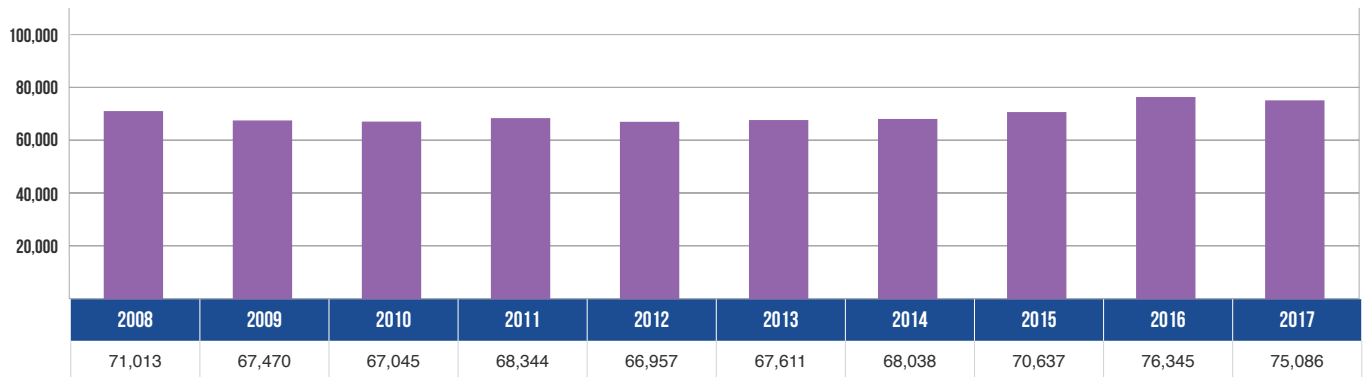
FARM EQUIPMENT CRASHES



There were 223 farm equipment crashes in 2017 – an increase of 16.8 percent from 2008.

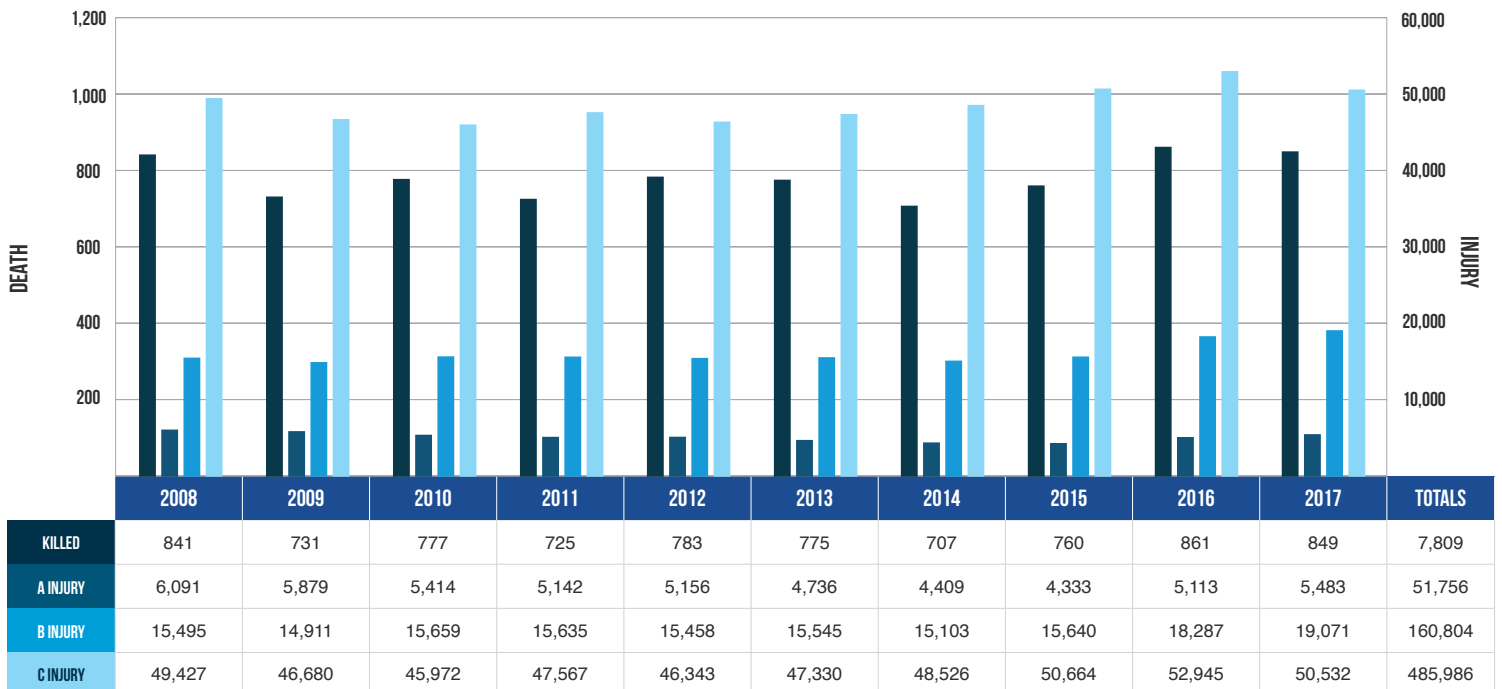
10 YEAR TRENDS-STATEWIDE (CONTINUED)

INJURED OCCUPANTS IN CRASHES



There were 75,086 occupants injured in crashes in 2017 – an increase of 5.7 percent from 2008.

DEATH AND INJURY FOR CRASH-INVOLVED OCCUPANTS



Over the period from 2008 to 2017, occupant deaths increased 1.0 percent, A injuries decreased 10.0 percent, B injuries increased 23.1 percent, and C injuries increased 2.2 percent.

Note: These figures contain the number of occupants recorded as injured by the police officer on the UD-10.

10 YEAR TRENDS-STATEWIDE (CONTINUED)

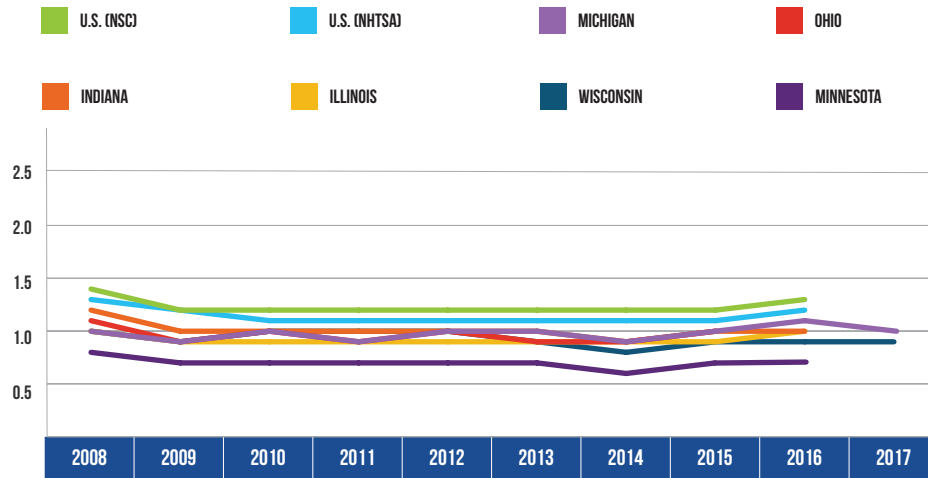
AVERAGE AGE OF DRIVERS IN CRASHES 2008 - 2017



Over the 10-year period, reflecting the demographic trend of increasing age in the general population, the average age of drivers involved in all crashes has increased more than three percent. The age of drivers involved in fatal crashes has increased nearly 23 percent. The average age of drinking drivers in crashes has decreased more than fourteen percent. The average age of drinking drivers in fatal crashes has remained about the same.

10 YEAR TRENDS-STATEWIDE (CONTINUED)

FATALITIES PER 100 MILLION VMT 2008 - 2017



YEAR	U.S. (NSC*)	U.S. (NHTSA**)	MICHIGAN	OHIO	INDIANA	ILLINOIS	WISCONSIN	MINNESOTA
2008	1.4	1.3	1.0	1.1	1.2	1.0	1.0	0.8
2009	1.2	1.2	0.9	0.9	1.0	0.9	0.9	0.7
2010	1.2	1.1	1.0	1.0	1.0	0.9	1.0	0.7
2011	1.2	1.1	0.9	0.9	1.0	0.9	1.0	0.7
2012	1.2	1.1	1.0	1.0	1.0	0.9	1.0	0.7
2013	1.2	1.1	1.0	0.9	1.0	0.9	0.9	0.7
2014	1.2	1.1	0.9	0.9	0.9	0.9	0.8	0.6
2015	1.2	1.1	1.0	1.0	1.0	0.9	0.9	0.7
2016	1.3	1.2	1.1	1.0	1.0	1.0	0.9	0.7
2017	--	--	1.0	--	--	--	0.9	--

* National Safety Council (NSC) reports traffic and nontraffic deaths within a year of the crash.

**National Highway Traffic Safety Administration (NHTSA) reports only traffic deaths that occur within 30 days of the accident.

U.S. data for this table and tables on the following page were provided by the National Safety Council [3], the National Highway Traffic Safety Administration [4], and the Federal Highway Administration [5]. State data for this table and tables on the following page were provided by Ohio [6], Indiana [7], Illinois [8], Wisconsin [9], and Minnesota [10].

10 YEAR TRENDS-STATEWIDE (CONTINUED)

YEAR	U.S. (NSC) FATALITIES	U.S. (NHTSA) FATALITIES	MICHIGAN FATALITIES	OHIO FATALITIES	INDIANA FATALITIES	ILLINOIS FATALITIES	WISCONSIN FATALITIES	MINNESOTA FATALITIES
2008	39,800	37,261	980	1,191	815	1,043	587	455
2009	35,900	33,963	871	1,028	692	911	542	421
2010	34,700	32,885	937	1,081	754	927	562	411
2011	34,600	32,367	889	1,015	749	918	565	368
2012	36,200	33,561	936	1,122	779	956	601	395
2013	35,369	32,850	951	990	777	991	527	387
2014	35,400	32,675	876	1,008	743	924	498	361
2015	38,300	35,092	963	1,110	829	998	555	411
2016	40,200	37,461	1,064	1,133	821	1,078	588	392
2017	--	--	1,028	1,179	--	--	594	--

YEAR	U.S. (FHWA) VMT	MICHIGAN VMT	OHIO VMT	INDIANA VMT	ILLINOIS VMT	WISCONSIN VMT	MINNESOTA VMT
2008	2,929	100.9	108.3	68.0	105.6	57.5	57.3
2009	2,935	95.9	110.8	68.8	105.7	58.2	56.9
2010	3,000	97.6	113.5	72.9	105.7	59.4	56.8
2011	2,946	94.8	111.7	77.5	103.4	58.6	56.7
2012	2,954	94.3	111.5	76.0	104.5	59.1	57.0
2013	2,972	95.1	112.7	79.4	105.5	59.5	57.0
2014	3,016	99.1	112.8	81.4	105.0	60.0	57.4
2015	3,148	97.8	117.8	82.1	105.4	62.1	59.1
2016	3,218	99.2	118.5	82.6	107.2	63.9	58.9
2017	--	101.8	--	--	--	65.3	--

VMT described in billions of miles