



2017

**MTCF**  
Michigan Traffic  
Crash Facts

# Michigan Traffic Crash Facts

## Reporting Criteria

Please pay particular attention to the wording when interpreting the three levels of data gathered for this report.

### Crash

The Crash Level analyzes data related to crash events and returns one result per crash.

Examples: Time, weather, and location.

### Units

The Units Level analyzes the experience of the units in the crash and returns one result per vehicle, driver, pedestrian, bicyclist, or train.

Examples: Vehicle type, driver condition, and unit events.

### People

The People Level analyzes the experience of the people involved in the crash and returns one result per occupant/person/party.

Examples: Age, injury severity, and seat belt or helmet use.

### **KABCO Injury Indicator:**

K = Killed

A = Suspected Serious Injury

B = Suspected Minor Injury

C = Possible Injury

O = No Injury

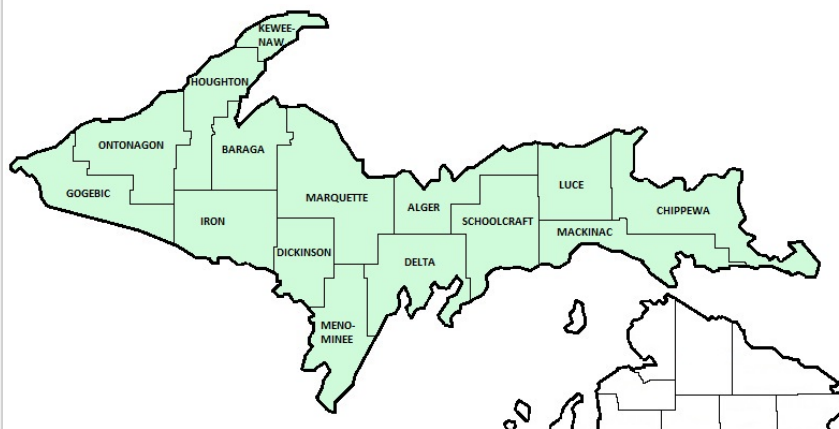
Property Damage Only (PDO)



## Michigan State Police (MSP) District 8 - Upper Peninsula

### 2017 Traffic Crash Data & 2013-2017 5-Year Trends

Beginning in 2011, District 8 is comprised of Alger, Baraga, Chippewa, Delta, Dickinson, Gogebic, Houghton, Iron, Keweenaw, Luce, Mackinac, Marquette, Menominee, Ontonagon, and Schoolcraft counties. Trend tables for this report are based on those counties.



### Sources:

The crashes in this report occurred on public roadways in Michigan and resulted in injuries, fatalities, or property damage (with \$1,000 as a reporting threshold). The information was gathered from Michigan Traffic Crash Report Forms (UD-10) submitted by local police departments, sheriff's offices, and the Michigan State Police. Other related information was obtained from the departments of Transportation, State, and Community Health.

This page left intentionally blank

## MSP District 8 - Upper Peninsula

- There were 9,542 crashes in District 8 during 2017. [Page 1]
- A total of 39 fatalities resulted from 35 fatal crashes in 2017 in District 8. [Page 1]
- There were 1,654 injuries and 1,234 injury crashes. [Page 1]
- There were 8,273 property damage only crashes (no fatalities or injuries). [Page 1]
- December had the highest number of crashes (1,265). [Pages 1-2]
- December had the highest number of fatal crashes (6) and fatalities (7). [Pages 1-2]
- December had the highest number of injury crashes (128) and injuries (173). [Page 1]
- December had the highest number of property damage only crashes (1,131). [Page 1]
- Of all vehicles involved in fatal crashes, 4 (7.5%) were motorcycles. [Page 1]
- Friday was the day of the week with the highest number of crashes (1,638) and fatal crashes (11). [Pages 2-3]
- The 3:00 PM - 5:59 PM time period had the highest number of crashes (1,700). This holds true for every year between 2013 and 2017. The Noon - 2:59 PM time period had the highest number of fatal crashes (7). [Pages 5-6]
- During the period from 2013 to 2017, the highest number of deer crashes occurred in 2017 (3,973). The 6:00 PM - 8:59 PM time period consistently had the highest number of deer-involved crashes during the five-year period. There were 2 fatal crashes involving deer in 2017. [Pages 7-8]
- Marquette County (19.1%) had the highest number of crashes in District 8 in 2017, followed by Delta County (14.0%), and Houghton County (10.4%). [Page 8]
- Delta County (25.6%) had the highest number of fatalities in District 8 in 2017, followed by Dickinson County (12.8%), and Marquette County and Mackinac County (10.3%). [Page 8]
- The highest number of drivers in crashes (13,950) occurred during 2013 and the highest number of drivers coded drinking in crashes (357) occurred during 2017 within the five year period between 2013 and 2017. [Page 9]
- A total of 365 crashes involved alcohol in 2017. [Page 10]
- Alcohol-involved fatal crashes were the highest in 2013 during the five-year period from 2013 to 2017 at 18. [Page 10]
- A total of 94 crashes, 3 fatal crashes, and 14 suspected serious injury crashes involved drugs in 2017. [Page 11]
- There were 11,605 drivers wearing seatbelts and 149 drivers not wearing seatbelts in crashes in 2017. Of the 149 drivers not wearing seat belts, 9 (6.0%) were killed and 71 (47.7%) were injured. [Pages 14-16]
- The most common hazardous action coded for drivers in 2017 in all crashes was speed too fast (1,182), while the most common hazardous action coded for drivers in fatal crashes was speed too fast (11). [Page 17]

# MSP District 8 - Upper Peninsula (continued)

## District 8 Experience

In 2017:

There were 13,050 drivers involved in 9,542 motor vehicle crashes in MSP District 8. Of those crashes, 35 were classified as fatal, resulting in 39 fatalities. An additional 1,654 persons were injured.

District 8 experienced the highest number of motor vehicle crashes (1,265) in December, the highest number of fatal crashes (6) and the highest number of persons killed (7) in December.

Michigan driver statistics indicate 5.8 percent of licensed drivers in District 8 were age 16-20, and 11.7 percent of drivers in crashes were also in that age group.

## 2017 - Crashes and Injuries by Month

Month	Crashes				Persons	
	Total	Fatal	Injury	Property Damage Only (PDO)	Fatalities	Injuries
January	861	2	116	743	2	158
February	783	3	96	684	3	127
March	676	3	99	574	4	140
April	516	4	81	431	5	106
May	494	3	78	413	3	109
June	706	5	92	609	5	120
July	676	3	121	552	4	155
August	637	1	111	525	1	156
September	794	2	105	687	2	139
October	1,015	1	109	905	1	136
November	1,119	2	98	1,019	2	135
December	1,265	6	128	1,131	7	173
<b>Total</b>	<b>9,542</b>	<b>35</b>	<b>1,234</b>	<b>8,273</b>	<b>39</b>	<b>1,654</b>

## 2017 - Driver Statistics

Age Group	District 8			Driver Rates	
	2017 Population	Licensed Drivers	Drivers in Crashes	Per 10k Population	Per 10k Licensed
0 - 15	48,274	1,464	34	7.0	232.2
16 - 20	21,380	12,924	1,530	715.6	1,183.8
21 - 24	19,176	11,997	1,123	585.6	936.1
25 - 64	148,311	135,405	7,795	525.6	575.7
65 +	64,936	59,336	1,909	294.0	321.7
Unknown	0	0	659	--	--
<b>Total</b>	<b>302,077</b>	<b>221,126</b>	<b>13,050</b>	<b>432.0</b>	<b>590.2</b>

## 2017 - Vehicles in Crashes

Vehicle Type	Motor Vehicles		Fatal Crashes		Injury Crashes	PDO Crashes
	Number of Vehicles	% of Total	Number	% of Total	Number	Number
Passenger car, SUV, van	9,284	71.1	24	45.3	1,301	7,959
Motor home	24	0.2	0	0.0	3	21
Pickup truck	2,844	21.8	7	13.2	384	2,453
Small truck under 10,000 lbs. GVWR	107	0.8	1	1.9	14	92
Motorcycle	97	0.7	4	7.5	70	23
Moped / goped	13	0.1	1	1.9	12	0
Go-cart / golf cart	3	0.0	1	1.9	1	1
Snowmobile	47	0.4	4	7.5	26	17
Off-Road Vehicle - ORV / All-Terrain Vehicle - ATV	70	0.5	3	5.7	54	13
Other	69	0.5	2	3.8	9	58
Truck/bus over 10,000 lbs.	332	2.5	6	11.3	45	281
Unknown	160	1.2	0	0.0	11	149
<b>Total</b>	<b>13,050</b>	<b>100.0</b>	<b>53</b>	<b>100.0</b>	<b>1,930</b>	<b>11,067</b>

## 5-Year Trend - Crashes by Month

Month	2013		2014		2015		2016		2017	
	Total Crashes	Fatal Crashes	Total Crashes	Fatal Crashes	Total Crashes	Fatal Crashes	Total Crashes	Fatal Crashes	Total Crashes	Fatal Crashes
January	1,120	5	1,152	2	992	2	857	5	861	2
February	930	0	869	2	952	0	713	4	783	3
March	660	3	779	0	600	0	467	2	676	3
April	721	3	609	0	525	2	550	0	516	4
May	617	4	539	1	473	1	494	1	494	3
June	705	2	650	3	579	1	667	6	706	5
July	707	3	591	1	592	6	591	3	676	3
August	639	4	512	3	568	4	603	1	637	1
September	696	4	591	0	604	1	603	1	794	2
October	801	2	767	3	703	4	732	1	1,015	1
November	1,156	3	1,087	3	841	2	924	2	1,119	2
December	1,204	3	980	2	670	2	1,063	3	1,265	6
<b>Total</b>	<b>9,956</b>	<b>36</b>	<b>9,126</b>	<b>20</b>	<b>8,099</b>	<b>25</b>	<b>8,264</b>	<b>29</b>	<b>9,542</b>	<b>35</b>

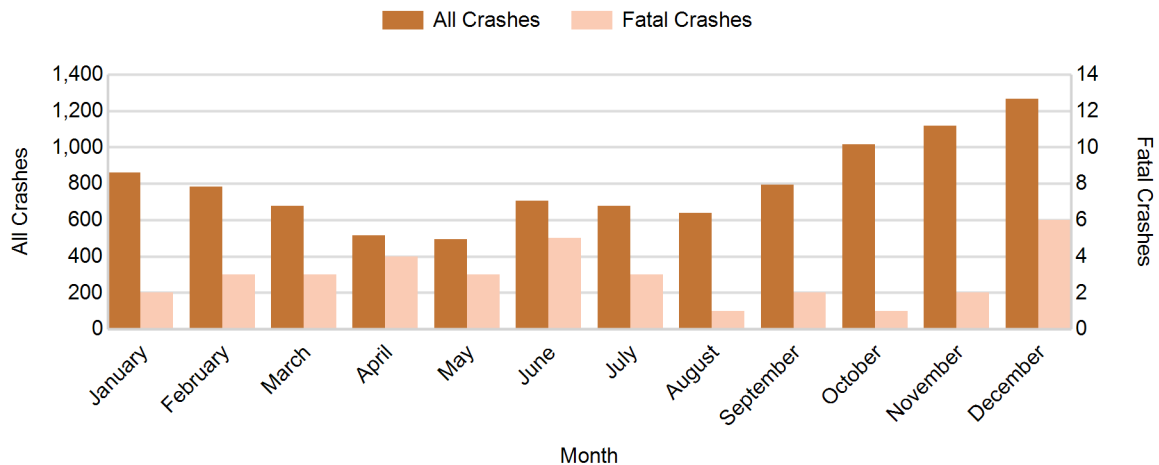
Note: † Indicates that the highest number of total crashes reported in the 5-year period occurred in the same month

## 5-Year Trend - Crashes by Day of Week

Day	2013		2014		2015		2016		2017	
	Total Crashes	Fatal Crashes	Total Crashes	Fatal Crashes	Total Crashes	Fatal Crashes	Total Crashes	Fatal Crashes	Total Crashes	Fatal Crashes
Monday	1,450	4	1,289	2	1,094	1	1,205	4	1,225	4
Tuesday	1,437	5	1,297	3	1,096	3	1,129	4	1,367	4
Wednesday	1,447	8	1,284	2	1,192	4	1,151	5	1,411	6
Thursday	1,479	4	1,367	3	1,277	2	1,286	5	1,407	4
Friday	1,634 †	1	1,588 †	1	1,362 †	5	1,315 †	4	1,638 †	11
Saturday	1,342	7	1,264	8	1,115	4	1,153	2	1,343	3
Sunday	1,167	7	1,037	1	963	6	1,025	5	1,151	3
<b>Total</b>	<b>9,956</b>	<b>36</b>	<b>9,126</b>	<b>20</b>	<b>8,099</b>	<b>25</b>	<b>8,264</b>	<b>29</b>	<b>9,542</b>	<b>35</b>

Note: † Indicates that the highest number of total crashes reported in the 5-year period occurred on the same day of the week

## 2017 Crashes by Month

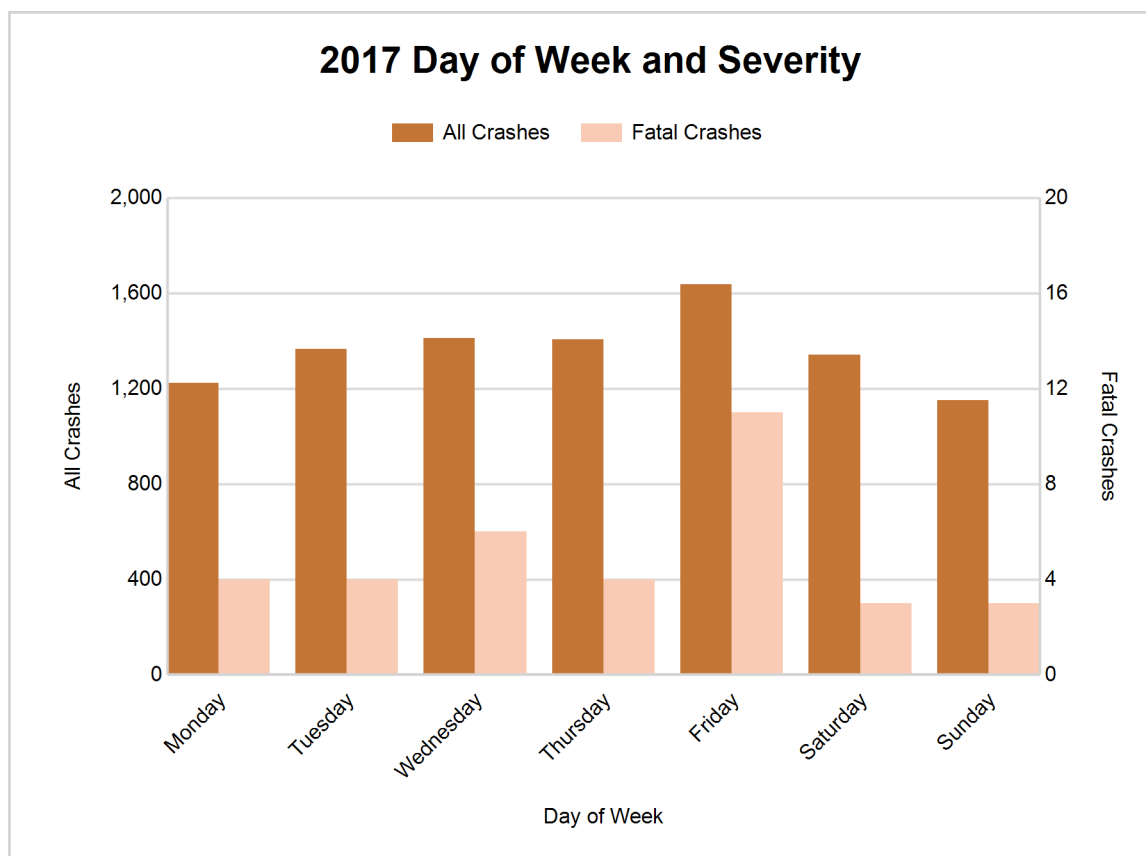


## MSP District 8 - Upper Peninsula (continued)

### 2017 - Crashes by Day of Week

Day	All Crashes		Fatal Crashes		Injury Crashes			PDO Crashes
	Number	% of Total	Number	% of Fatal	A	B	C	Number
Monday	1,225	12.8	4	11.4	17	36	92	1,076
Tuesday	1,367	14.3	4	11.4	23	45	106	1,189
Wednesday	1,411	14.8	6	17.1	25	55	100	1,225
Thursday	1,407	14.7	4	11.4	23	38	99	1,243
Friday	1,638	17.2	11	31.4	32	45	139	1,411
Saturday	1,343	14.1	3	8.6	39	69	99	1,133
Sunday	1,151	12.1	3	8.6	36	45	71	996
<b>Total</b>	<b>9,542</b>	<b>100.0</b>	<b>35</b>	<b>100.0</b>	<b>195</b>	<b>333</b>	<b>706</b>	<b>8,273</b>

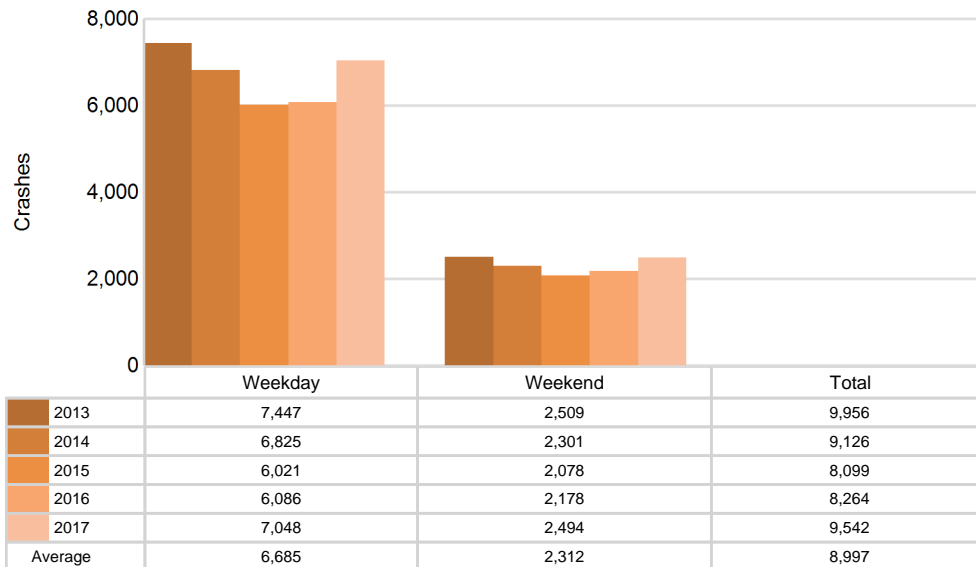
### 2017 Day of Week and Severity



## 5-Year Trend - Crashes by Weekday and Weekend

Portion of Week	2013		2014		2015		2016		2017	
	Total Crashes	Fatal Crashes	Total Crashes	Fatal Crashes	Total Crashes	Fatal Crashes	Total Crashes	Fatal Crashes	Total Crashes	Fatal Crashes
Weekday	7,447	22	6,825	11	6,021	15	6,086	22	7,048	29
Weekend	2,509	14	2,301	9	2,078	10	2,178	7	2,494	6
<b>Total</b>	<b>9,956</b>	<b>36</b>	<b>9,126</b>	<b>20</b>	<b>8,099</b>	<b>25</b>	<b>8,264</b>	<b>29</b>	<b>9,542</b>	<b>35</b>

## 5-Year Crash Trends by Weekday (Monday - Friday) and Weekend (Saturday & Sunday)

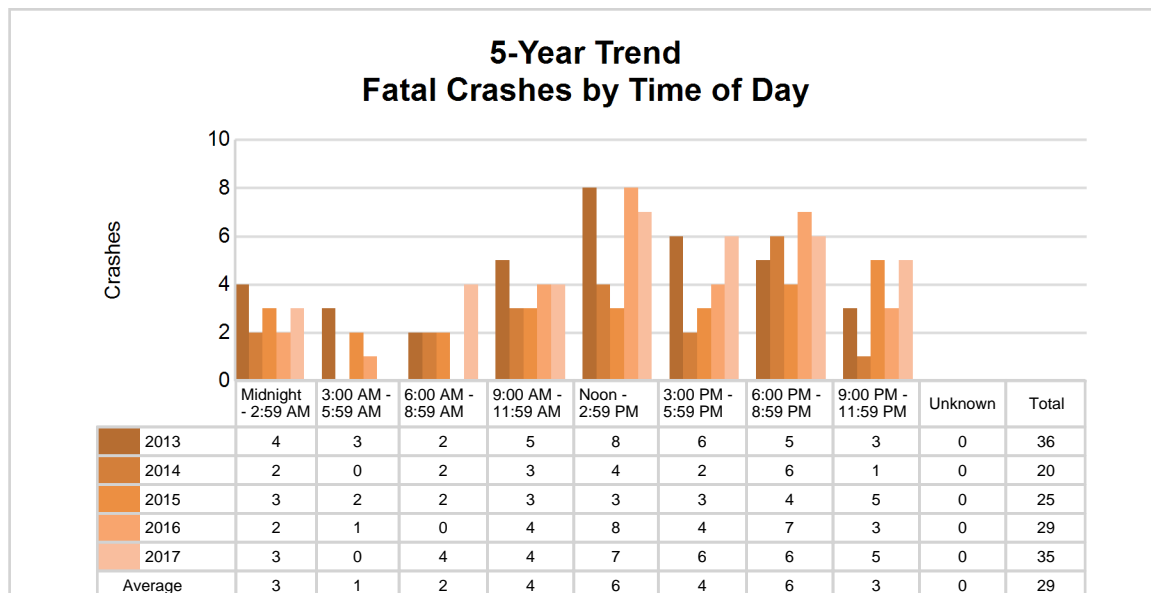
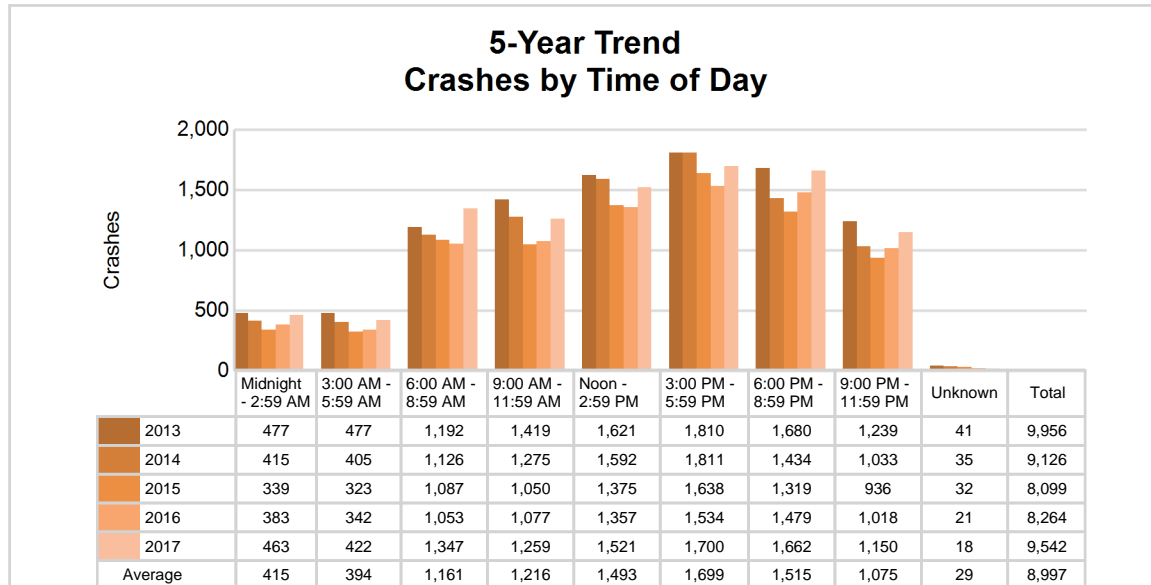


# MSP District 8 - Upper Peninsula (continued)

## 5-Year Trend - Crashes by Time of Day

Time of Day	2013		2014		2015		2016		2017	
	Total Crashes	Fatal Crashes	Total Crashes	Fatal Crashes	Total Crashes	Fatal Crashes	Total Crashes	Fatal Crashes	Total Crashes	Fatal Crashes
Midnight - 2:59 AM	477	4	415	2	339	3	383	2	463	3
3:00 AM - 5:59 AM	477	3	405	0	323	2	342	1	422	0
6:00 AM - 8:59 AM	1,192	2	1,126	2	1,087	2	1,053	0	1,347	4
9:00 AM - 11:59 AM	1,419	5	1,275	3	1,050	3	1,077	4	1,259	4
Noon - 2:59 PM	1,621	8	1,592	4	1,375	3	1,357	8	1,521	7
3:00 PM - 5:59 PM	1,810 †	6	1,811 †	2	1,638 †	3	1,534 †	4	1,700 †	6
6:00 PM - 8:59 PM	1,680	5	1,434	6	1,319	4	1,479	7	1,662	6
9:00 PM - 11:59 PM	1,239	3	1,033	1	936	5	1,018	3	1,150	5
Unknown	41	0	35	0	32	0	21	0	18	0
<b>Total</b>	<b>9,956</b>	<b>36</b>	<b>9,126</b>	<b>20</b>	<b>8,099</b>	<b>25</b>	<b>8,264</b>	<b>29</b>	<b>9,542</b>	<b>35</b>

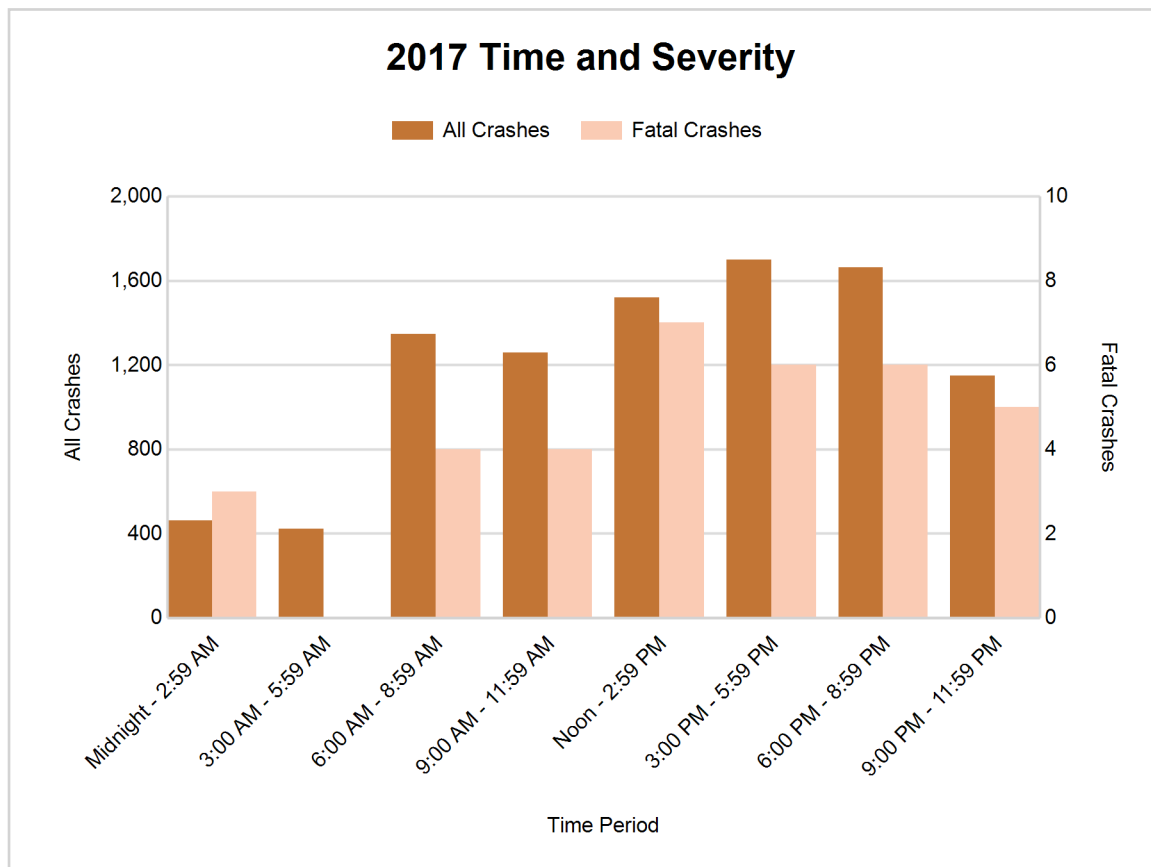
Note: † Indicates that the highest number of total crashes reported in the 5-year period occurred in the same time period





## 2017 - Time and Severity

Time of Day	All Crashes		Fatal Crashes		Injury Crashes			PDO Crashes
	Number	% of Total	Number	% of Fatal	A	B	C	Number
Midnight - 2:59 AM	463	4.9	3	8.6	14	26	29	391
3:00 AM - 5:59 AM	422	4.4	0	0.0	10	9	19	384
6:00 AM - 8:59 AM	1,347	14.1	4	11.4	18	30	73	1,222
9:00 AM - 11:59 AM	1,259	13.2	4	11.4	27	44	121	1,063
Noon - 2:59 PM	1,521	15.9	7	20.0	33	82	172	1,227
3:00 PM - 5:59 PM	1,700	17.8	6	17.1	38	67	162	1,427
6:00 PM - 8:59 PM	1,662	17.4	6	17.1	40	49	83	1,484
9:00 PM - 11:59 PM	1,150	12.1	5	14.3	15	26	46	1,058
Unknown	18	0.2	0	0.0	0	0	1	17
<b>Total</b>	<b>9,542</b>	<b>100.0</b>	<b>35</b>	<b>100.0</b>	<b>195</b>	<b>333</b>	<b>706</b>	<b>8,273</b>

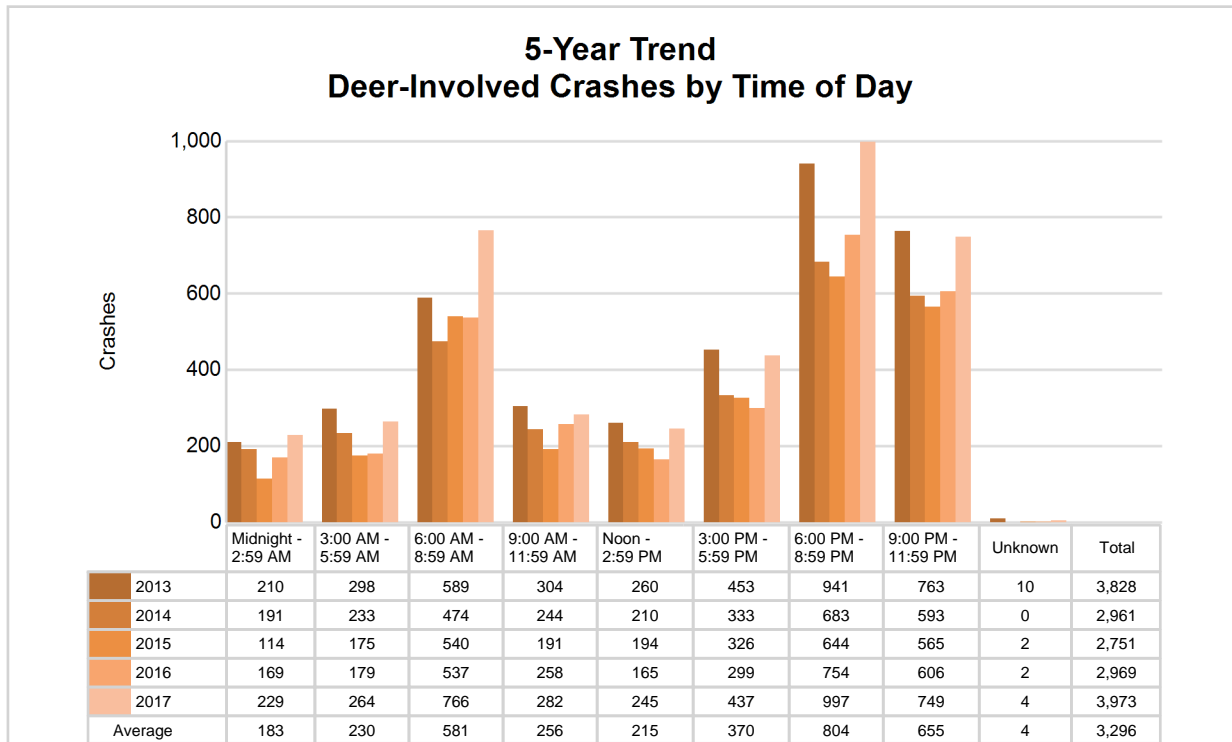


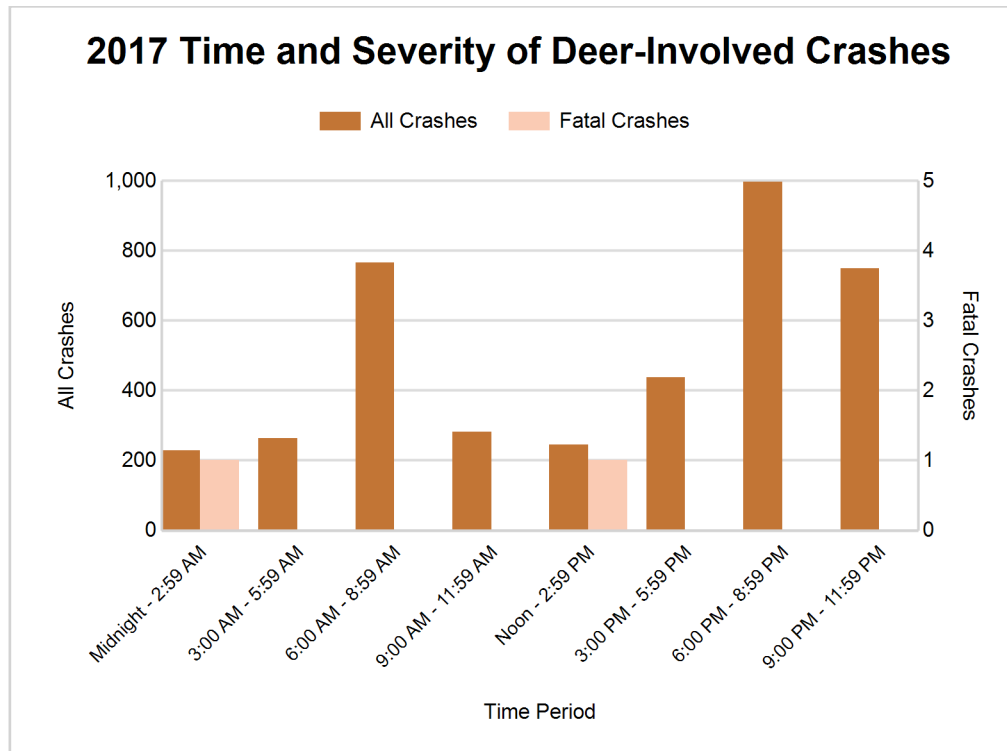
# MSP District 8 - Upper Peninsula (continued)

## 5-Year Trend - Deer-Involved Crashes by Time of Day

Time of Day	2013		2014		2015		2016		2017	
	Total Crashes	Fatal Crashes	Total Crashes	Fatal Crashes	Total Crashes	Fatal Crashes	Total Crashes	Fatal Crashes	Total Crashes	Fatal Crashes
Midnight - 2:59 AM	210	0	191	0	114	0	169	0	229	1
3:00 AM - 5:59 AM	298	0	233	0	175	0	179	0	264	0
6:00 AM - 8:59 AM	589	0	474	0	540	0	537	0	766	0
9:00 AM - 11:59 AM	304	0	244	0	191	0	258	0	282	0
Noon - 2:59 PM	260	0	210	0	194	0	165	0	245	1
3:00 PM - 5:59 PM	453	1	333	0	326	0	299	0	437	0
6:00 PM - 8:59 PM	941 †	1	683 †	0	644 †	0	754 †	0	997 †	0
9:00 PM - 11:59 PM	763	0	593	0	565	0	606	0	749	0
Unknown	10	0	0	0	2	0	2	0	4	0
<b>Total</b>	<b>3,828</b>	<b>2</b>	<b>2,961</b>	<b>0</b>	<b>2,751</b>	<b>0</b>	<b>2,969</b>	<b>0</b>	<b>3,973</b>	<b>2</b>

Note: † Indicates that the highest number of total crashes reported in the 5-year period occurred in the same time period





#### 2017 - Reported Motor Vehicle Crashes by County

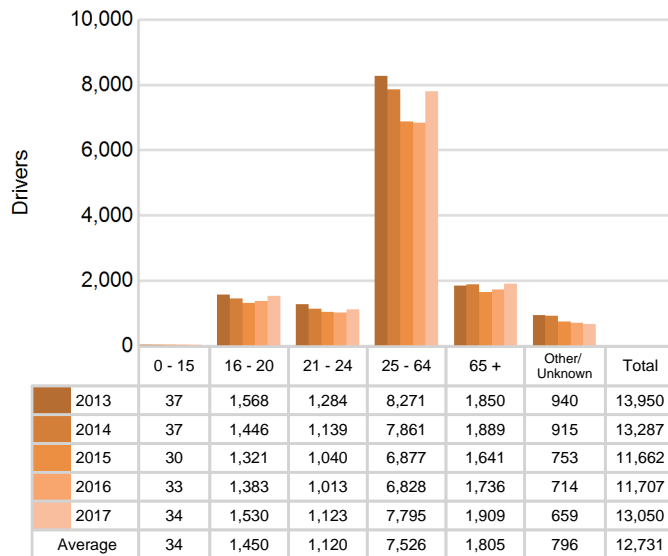
County	Crashes											Persons	
	Total	Fatal	Injury	Property Damage	Inter-state	US Route	State Route	Local Street	Alcohol-Involved	Drug-Involved	Deer-Involved	Fatalities	Injuries
Alger	314	1	35	278	0	25	166	119	11	5	147	1	52
Baraga	349	0	44	305	0	129	72	141	19	5	217	0	63
Chippewa	980	2	140	838	267	0	274	433	37	10	331	2	183
Delta	1,334	8	154	1,172	0	498	230	600	37	17	597	10	202
Dickinson	957	4	114	839	0	351	259	343	22	6	516	5	153
Gogebic	226	3	38	185	0	123	22	79	13	0	73	3	44
Houghton	996	2	144	850	0	346	252	384	40	7	269	2	196
Iron	556	1	47	508	0	230	91	230	23	3	348	1	59
Keweenaw	93	0	12	81	0	50	9	31	4	0	40	0	13
Luce	192	3	22	167	0	0	104	82	8	1	88	3	30
Mackinac	578	3	62	513	113	141	148	170	24	9	306	4	92
Marquette	1,820	4	270	1,546	0	539	334	940	82	17	481	4	365
Menominee	427	2	82	343	0	165	47	203	24	8	121	2	112
Ontonagon	322	1	30	291	0	77	168	71	13	0	201	1	35
Schoolcraft	398	1	40	357	0	134	146	115	8	6	238	1	55
<b>Total</b>	<b>9,542</b>	<b>35</b>	<b>1,234</b>	<b>8,273</b>	<b>380</b>	<b>2,808</b>	<b>2,322</b>	<b>3,941</b>	<b>365</b>	<b>94</b>	<b>3,973</b>	<b>39</b>	<b>1,654</b>

# MSP District 8 - Upper Peninsula (continued)

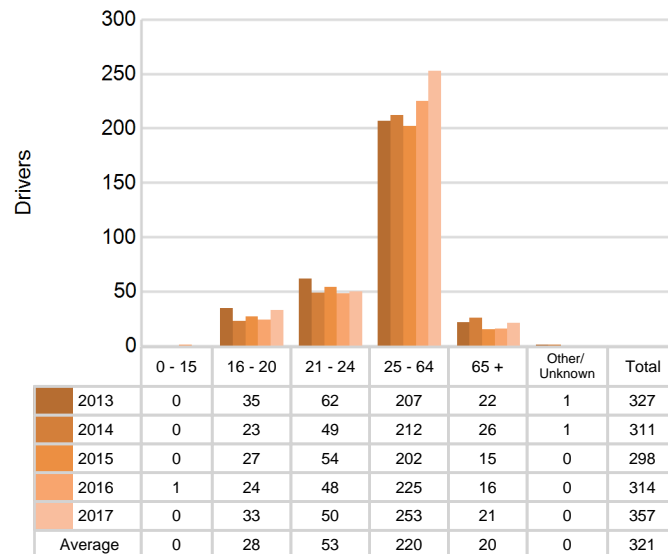
## 5-Year Trend - Drivers in Crashes Coded Drinking by Driver Age

Driver Age	2013		2014		2015		2016		2017	
	Total Drivers in Crashes	Total Drivers Coded Drinking	Total Drivers in Crashes	Total Drivers Coded Drinking	Total Drivers in Crashes	Total Drivers Coded Drinking	Total Drivers in Crashes	Total Drivers Coded Drinking	Total Drivers in Crashes	Total Drivers Coded Drinking
0 - 15	37	0	37	0	30	0	33	1	34	0
16 - 20	1,568	35	1,446	23	1,321	27	1,383	24	1,530	33
21 - 24	1,284	62	1,139	49	1,040	54	1,013	48	1,123	50
25 - 64	8,271	207	7,861	212	6,877	202	6,828	225	7,795	253
65 +	1,850	22	1,889	26	1,641	15	1,736	16	1,909	21
Unknown	940	1	915	1	753	0	714	0	659	0
<b>Total</b>	<b>13,950</b>	<b>327</b>	<b>13,287</b>	<b>311</b>	<b>11,662</b>	<b>298</b>	<b>11,707</b>	<b>314</b>	<b>13,050</b>	<b>357</b>

**5-Year Trend  
Total Drivers in Crashes by Age**



**5-Year Trend  
Total Drivers Coded Drinking by Age**



# MSP District 8 - Upper Peninsula (continued)

10

## 2017 - Bodily Alcohol Concentration (BAC) Results Among All Vehicle Drivers in Alcohol-Involved Crashes by Age

Age Group	Drivers				BAC Result Range for Drivers Coded Drinking				
	Total Drivers in Alcohol-Involved Crashes	Total Drivers Tested in all Crashes	Total Drivers Coded Drinking, Tested	Total Drivers Coded Drinking	BAC = 0.00	BAC 0.01 g/dL to 0.07 g/dL	BAC 0.08 g/dL to 0.16 g/dL	BAC 0.17 g/dL and Above	BAC Not Reported
0 - 15	0	1	0	0	0	0	0	0	0
16 - 20	39	33	23	33	1	6	9	2	15
21 - 24	57	37	32	50	0	2	9	10	29
25 - 64	290	230	170	253	1	16	49	58	129
65 +	26	32	17	21	0	1	5	4	11
Unknown	30	0	0	0	0	0	0	0	0
<b>Total</b>	<b>442</b>	<b>333</b>	<b>242</b>	<b>357</b>	<b>2</b>	<b>25</b>	<b>72</b>	<b>74</b>	<b>184</b>

Notes: BAC measured in grams (g) per deciliter (dL).

BAC may not be reported if drivers are not tested or if the results are not available immediately (as in the case of a blood test).

A driver may be coded by the officer as drinking even though no test is administered.

## Alcohol-Involved Crashes

In 2017, there were 442 drivers in alcohol-involved crashes; 357 (80.8%) of those drivers were coded as had-been-drinking by the officer on the crash form.

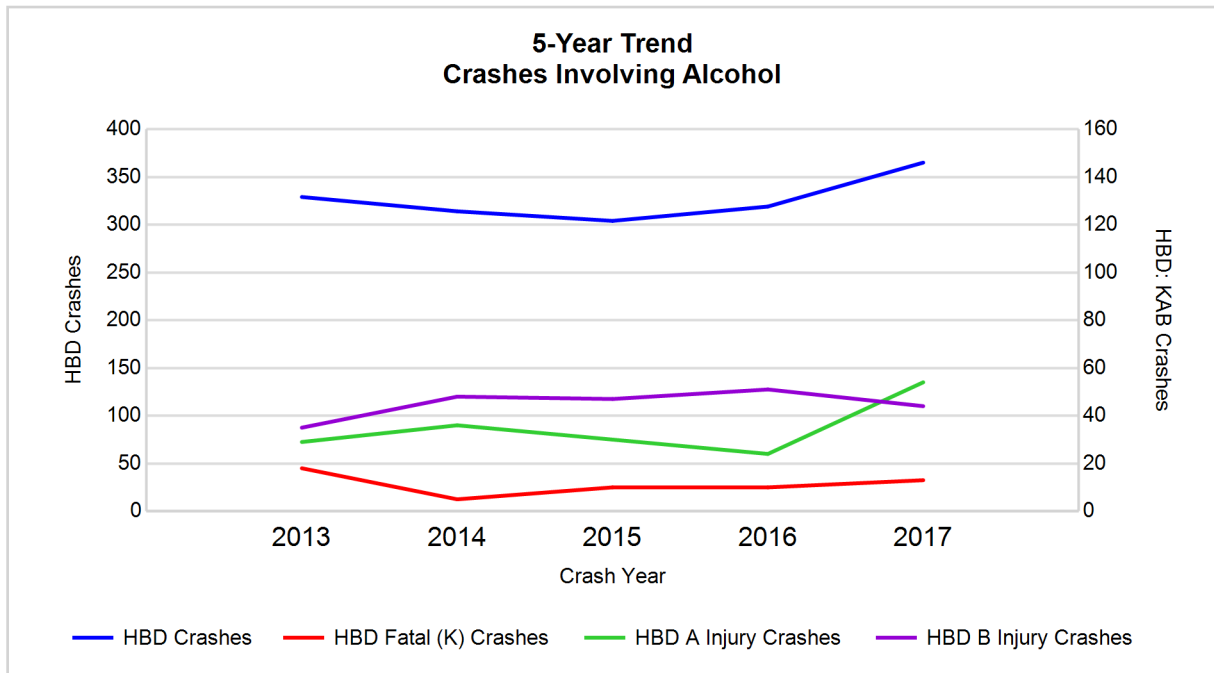
- 146 (40.9%) of the 357 drivers had a blood alcohol concentration (BAC) of 0.08 g/dL (grams per deciliter) or greater, and 74 (50.7%) of the 146 drivers had a BAC at or above 0.17 g/dL.
- 242 (67.8%) of the 357 drivers were coded as had-been-drinking and were tested for alcohol consumption.

## 5-Year Trend - Crashes Involving Alcohol

Year	All Crashes	HBD Crashes	% HBD	Fatal Crashes	HBD Fatal Crashes	% HBD	A Injury Crashes	HBD A Injury Crashes	% HBD	B Injury Crashes	HBD B Injury Crashes	% HBD
2013	9,956	329	3.3	36	18	50.0	168	29	17.3	323	35	10.8
2014	9,126	314	3.4	20	5	25.0	165	36	21.8	326	48	14.7
2015	8,099	304	3.8	25	10	40.0	166	30	18.1	286	47	16.4
2016	8,264	319	3.9	29	10	34.5	166	24	14.5	349	51	14.6
2017	9,542	365**	3.8	35	13	37.1	195**	54**	27.7**	333	44	13.2

Note: \* Indicates that the most recent year is the lowest number or percentage reported in the 5-year period in that column

\*\* Indicates that the most recent year is the highest number or percentage reported in the 5-year period in that column



Note: Had-Been-Drinking (HBD)

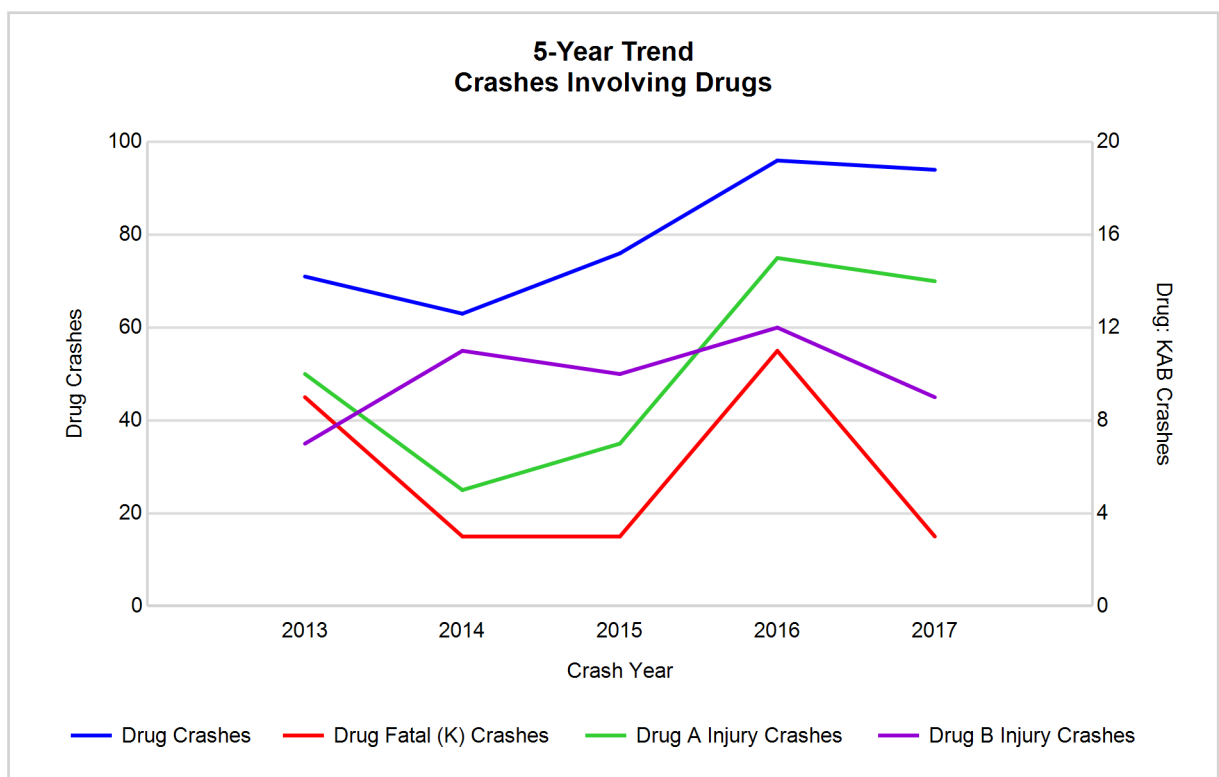
## MSP District 8 - Upper Peninsula (continued)

### 5-Year Trend - Crashes Involving Drugs

Year	All Crashes	Drug Crashes	% Drug	Fatal Crashes	Drug Fatal Crashes	% Drug	A Injury Crashes	Drug A Injury Crashes	% Drug	B Injury Crashes	Drug B Injury Crashes	% Drug
2013	9,956	71	0.7	36	9	25.0	168	10	6.0	323	7	2.2
2014	9,126	63	0.7	20	3	15.0	165	5	3.0	326	11	3.4
2015	8,099	76	0.9	25	3	12.0	166	7	4.2	286	10	3.5
2016	8,264	96	1.2	29	11	37.9	166	15	9.0	349	12	3.4
2017	9,542	94	1.0	35	3	8.6*	195**	14	7.2	333	9	2.7

Note: \* Indicates that the most recent year is the lowest number or percentage reported in the 5-year period in that column

\*\* Indicates that the most recent year is the highest number or percentage reported in the 5-year period in that column

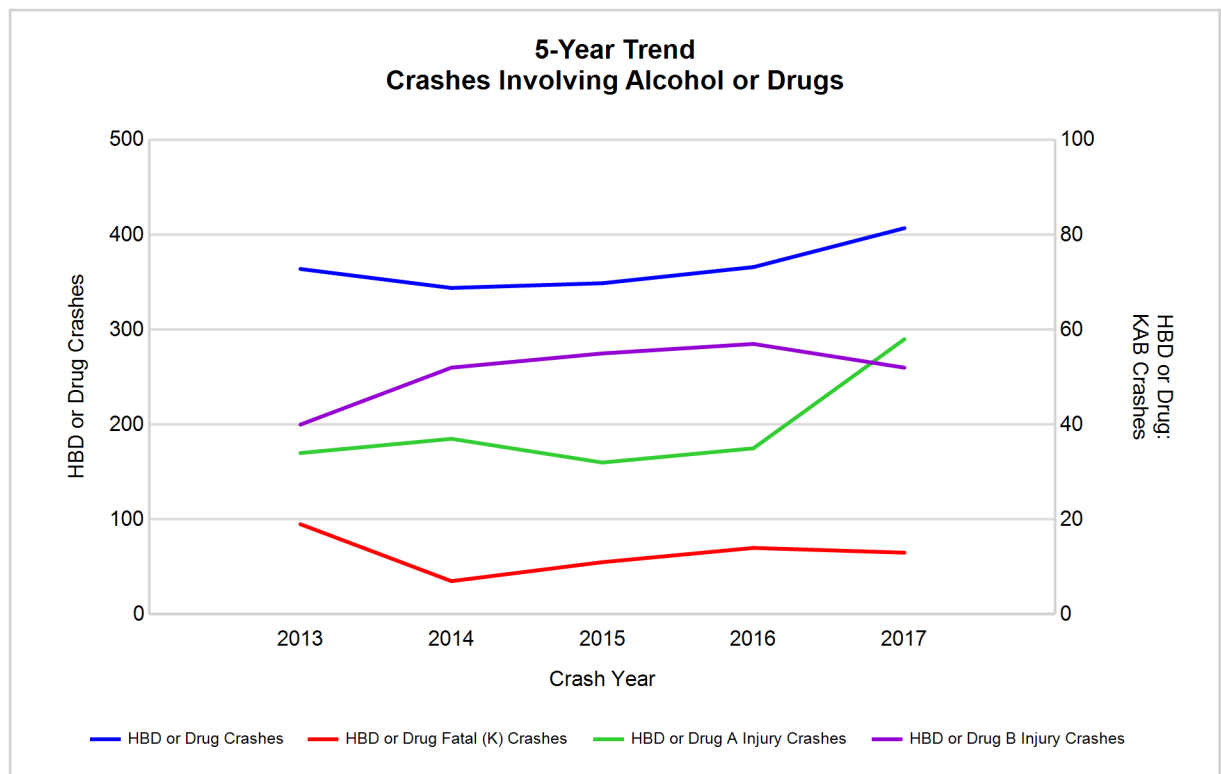


## 5-Year Trend - Crashes Involving Alcohol or Drugs

Year	All Crashes	HBD or Drug Crashes	% HBD or Drug	Fatal Crashes	HBD or Drug Fatal Crashes	% HBD or Drug	A Injury Crashes	HBD or Drug A Injury Crashes	% HBD or Drug	B Injury Crashes	HBD or Drug B Injury Crashes	% HBD or Drug
2013	9,956	364	3.7	36	19	52.8	168	34	20.2	323	40	12.4
2014	9,126	344	3.8	20	7	35.0	165	37	22.4	326	52	16.0
2015	8,099	349	4.3	25	11	44.0	166	32	19.3	286	55	19.2
2016	8,264	366	4.4	29	14	48.3	166	35	21.1	349	57	16.3
2017	9,542	407**	4.3	35	13	37.1	195**	58**	29.7**	333	52	15.6

Note: \* Indicates that the most recent year is the lowest number or percentage reported in the 5-year period in that column

\*\* Indicates that the most recent year is the highest number or percentage reported in the 5-year period in that column



Note: Had-Been-Drinking (HBD)

# MSP District 8 - Upper Peninsula (continued)

## 2017 - Restraints Worn Among Vehicle Drivers and Injured Passengers by Vehicle Type

Vehicle Type	Total Occupants			Fatalities			A - Suspected Serious			B - Suspected Minor			C - Possible Injury			No Injury		
	Total	Used Restraint	%	Total	Used Restraint	%	Total	Used Restraint	%	Total	Used Restraint	%	Total	Used Restraint	%	Total	Used Restraint	%
Passenger car, SUV, van	9,580	8,753	91.4	22	14	63.6	122	90	73.8	253	220	87.0	732	692	94.5	8,055	7,719	95.8
Motor home	24	23	95.8	0	0	0.0	0	0	0.0	0	0	0.0	2	2	100.0	21	21	100.0
Pickup truck	2,935	2,677	91.2	2	0	0.0	48	29	60.4	83	72	86.7	159	140	88.1	2,520	2,429	96.4
Small truck under 10,000 lbs. GVWR	109	96	88.1	1	0	0.0	3	1	33.3	2	2	100.0	2	2	100.0	95	91	95.8
Motorcycle	104	59	56.7	4	2	50.0	24	12	50.0	33	19	57.6	17	13	76.5	24	13	54.2
Moped / goped	14	5	35.7	1	0	0.0	1	0	0.0	8	5	62.5	3	0	0.0	1	0	0.0
Go-cart / golf cart	4	1	25.0	1	0	0.0	1	0	0.0	0	0	0.0	1	0	0.0	1	1	100.0
Snowmobile	47	41	87.2	3	3	100.0	14	13	92.9	4	2	50.0	7	5	71.4	19	18	94.7
Off-Road Vehicle - ORV / All-Terrain Vehicle - ATV	82	23	28.0	3	0	0.0	25	8	32.0	22	7	31.8	10	3	30.0	18	5	27.8
Other	74	50	67.6	0	0	0.0	0	0	0.0	4	4	100.0	5	4	80.0	57	42	73.7
Truck/bus over 10,000 lbs.	341	318	93.3	2	0	0.0	4	3	75.0	2	2	100.0	11	6	54.5	314	307	97.8
Unknown	160	1	0.6	0	0	0.0	0	0	0.0	0	0	0.0	0	0	0.0	0	0	0.0
<b>Total</b>	<b>13,474</b>	<b>12,047</b>	<b>89.4</b>	<b>39</b>	<b>19</b>	<b>48.7</b>	<b>242</b>	<b>156</b>	<b>64.5</b>	<b>411</b>	<b>333</b>	<b>81.0</b>	<b>949</b>	<b>867</b>	<b>91.4</b>	<b>11,125</b>	<b>10,646</b>	<b>95.7</b>

Note: Restraint Use includes shoulder belt only used, lap belt only used, both lap and shoulder belts used, child restraint used, restraint failure, and helmet worn.

## 2017 - Restraints Worn Among Vehicle Drivers and Injured Passengers by Age

Age Group	Total Occupants			Fatalities			A - Suspected Serious			B - Suspected Minor			C - Possible Injury			No Injury		
	Total	Used Restraint	%	Total	Used Restraint	%	Total	Used Restraint	%	Total	Used Restraint	%	Total	Used Restraint	%	Total	Used Restraint	%
0 - 15	120	94	78.3	2	1	50.0	14	7	50.0	36	29	80.6	56	48	85.7	12	9	75.0
16 - 20	1,602	1,489	92.9	2	2	100.0	37	21	56.8	79	65	82.3	133	121	91.0	1,348	1,278	94.8
21 - 24	1,158	1,077	93.0	2	1	50.0	19	10	52.6	38	30	78.9	92	76	82.6	1,004	959	95.5
25 - 64	7,966	7,514	94.3	22	8	36.4	142	94	66.2	204	159	77.9	512	477	93.2	7,047	6,757	95.9
65 +	1,965	1,869	95.1	11	7	63.6	30	24	80.0	54	50	92.6	152	143	94.1	1,708	1,642	96.1
Unknown	663	4	0.6	0	0	0.0	0	0	0.0	0	0	0.0	4	2	50.0	6	1	16.7
<b>Total</b>	<b>13,474</b>	<b>12,047</b>	<b>89.4</b>	<b>39</b>	<b>19</b>	<b>48.7</b>	<b>242</b>	<b>156</b>	<b>64.5</b>	<b>411</b>	<b>333</b>	<b>81.0</b>	<b>949</b>	<b>867</b>	<b>91.4</b>	<b>11,125</b>	<b>10,646</b>	<b>95.7</b>

Note: Restraint Use includes shoulder belt only used, lap belt only used, both lap and shoulder belts used, child restraint used, restraint failure, and helmet worn.



# MSP District 8 - Upper Peninsula (continued)

14

## 5-Year Trend - Restraint Use Among Drivers

Restraint Use	2013			2014			2015			2016			2017		
	Drivers	Fatal Drivers	Injured Drivers	Drivers	Fatal Drivers	Injured Drivers	Drivers	Fatal Drivers	Injured Drivers	Drivers	Fatal Drivers	Injured Drivers	Drivers	Fatal Drivers	Injured Drivers
No belts available	129	1	13	80	0	9	96	0	17	44	0	3	48	0	21
Shoulder belt only used	37	1	8	55	0	4	43	0	6	77	0	7	85	0	4
Lap belt only used	52	0	3	62	1	6	33	0	3	27	0	6	26	0	2
Both lap & shoulder belts used	12,118	10	1,015	11,515	7	967	10,176	6	876	10,192	4	872	11,488	9	949
No belts used	118	9	41	112	4	39	97	8	39	94	5	40	101	9	50
Child restraint used	0	0	0	0	0	0	0	0	0	3	0	2	2	0	1
Child restraint not used, unavailable or improper use	1	0	0	0	0	0	0	0	0	1	0	0	0	0	0
Restraint failure	10	0	0	6	0	0	8	0	0	5	0	0	6	0	1
Restraint use unknown	298	2	26	300	0	39	257	2	45	689	1	37	1,053	1	46
Helmet worn	170	4	113	194	1	130	131	2	91	123	9	90	107	5	71
Helmet not worn	60	4	42	39	2	29	50	2	39	65	3	44	48	3	35
Helmet use unknown	12	0	9	12	0	7	9	0	6	16	0	10	16	1	9
Uncoded & errors	945	0	2	912	0	3	762	0	1	371	0	1	70	0	0
<b>Total</b>	<b>13,950</b>	<b>31</b>	<b>1,272</b>	<b>13,287</b>	<b>15</b>	<b>1,233</b>	<b>11,662</b>	<b>20</b>	<b>1,123</b>	<b>11,707</b>	<b>22</b>	<b>1,112</b>	<b>13,050</b>	<b>28</b>	<b>1,189</b>

## 5-Year Trend - Restraint Use Among Drivers Coded Drinking

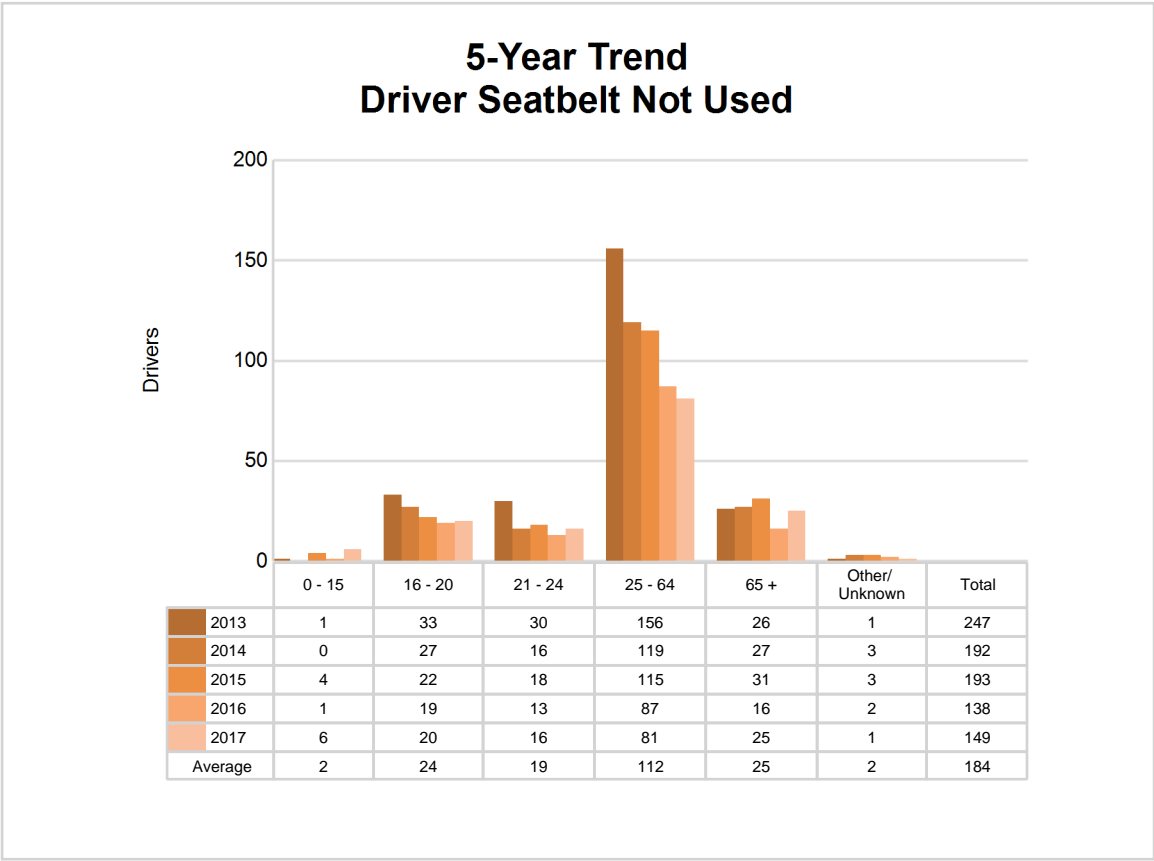
Restraint Use	2013			2014			2015			2016			2017		
	Drivers	Fatal Drivers	Injured Drivers	Drivers	Fatal Drivers	Injured Drivers	Drivers	Fatal Drivers	Injured Drivers	Drivers	Fatal Drivers	Injured Drivers	Drivers	Fatal Drivers	Injured Drivers
No belts available	3	1	0	1	0	1	3	0	1	1	0	0	3	0	3
Shoulder belt only used	3	0	1	1	0	0	1	0	1	0	0	0	2	0	1
Lap belt only used	2	0	0	0	0	0	1	0	1	0	0	0	0	0	0
Both lap & shoulder belts used	206	3	50	204	0	57	198	1	51	209	1	57	228	1	64
No belts used	27	6	13	26	2	16	19	4	12	25	4	13	34	4	22
Child restraint used	0	0	0	0	0	0	0	0	0	0	0	0	0	0	0
Child restraint not used, unavailable or improper use	0	0	0	0	0	0	0	0	0	1	0	0	0	0	0
Restraint failure	1	0	0	0	0	0	1	0	0	0	0	0	0	0	0
Restraint use unknown	61	1	11	56	0	16	56	0	17	58	0	17	73	1	20
Helmet worn	9	2	2	13	1	9	9	1	7	7	1	6	8	3	4
Helmet not worn	11	2	9	7	0	6	8	1	6	8	1	6	6	1	5
Helmet use unknown	2	0	2	2	0	2	2	0	2	3	0	3	3	1	2
Uncoded & errors	2	0	0	1	0	0	0	0	0	2	0	0	0	0	0
<b>Total</b>	<b>327</b>	<b>15</b>	<b>88</b>	<b>311</b>	<b>3</b>	<b>107</b>	<b>298</b>	<b>7</b>	<b>98</b>	<b>314</b>	<b>7</b>	<b>102</b>	<b>357</b>	<b>11</b>	<b>121</b>

# MSP District 8 - Upper Peninsula (continued)

5-Year Trend - Seatbelt Not Used Among Drivers by Age

Age Group	2013			2014			2015			2016			2017		
	Drivers	Fatal Drivers	Injured Drivers	Drivers	Fatal Drivers	Injured Drivers	Drivers	Fatal Drivers	Injured Drivers	Drivers	Fatal Drivers	Injured Drivers	Drivers	Fatal Drivers	Injured Drivers
0 - 15	1	0	1	0	0	0	4	0	3	1	0	1	6	0	6
16 - 20	33	0	9	27	0	10	22	2	8	19	0	9	20	0	7
21 - 24	30	2	6	16	1	7	18	0	5	13	0	5	16	1	11
25 - 64	156	8	29	119	3	27	115	4	31	87	3	24	81	6	41
65 +	26	0	9	27	0	4	31	2	9	16	2	4	25	2	6
Unknown	1	0	0	3	0	0	3	0	0	2	0	0	1	0	0
Total	247	10	54	192	4	48	193	8	56	138	5	43	149	9	71

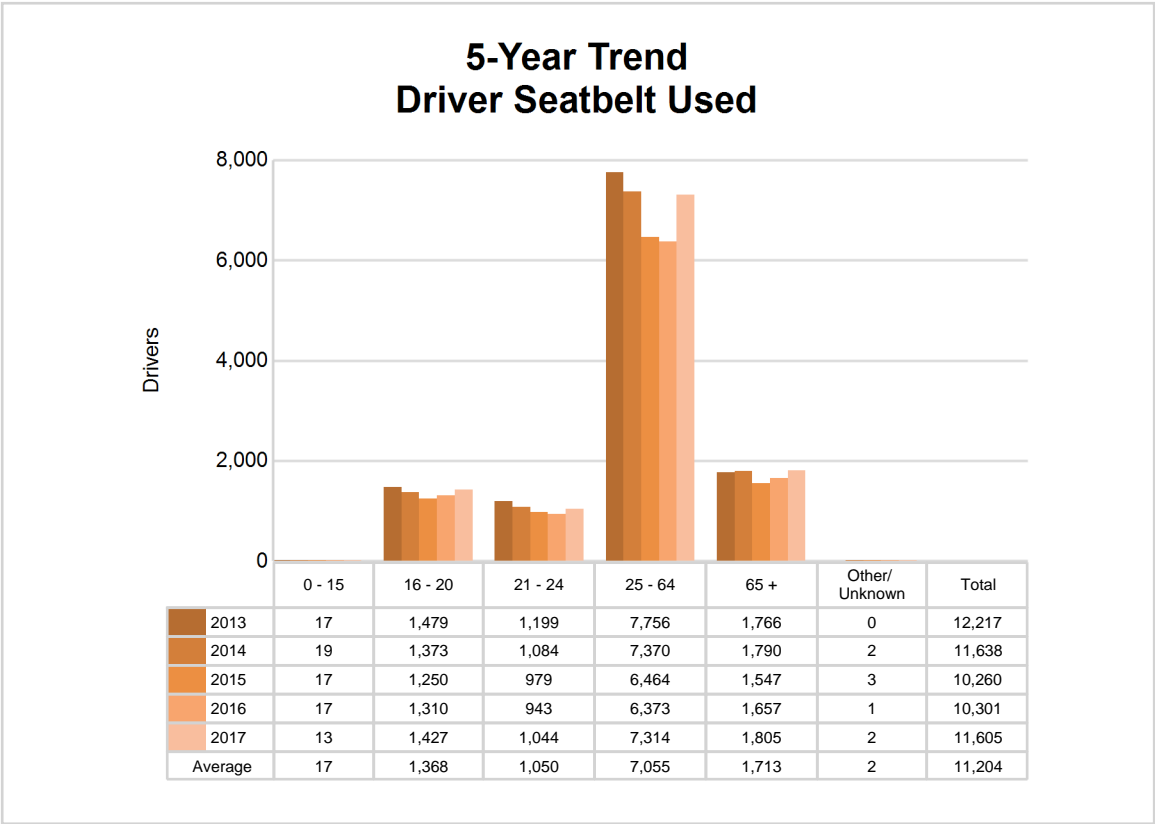
Note: Seatbelt Not Used includes no belts available or no belts used.



5-Year Trend - Seatbelt Used Among Drivers by Age

Age Group	2013			2014			2015			2016			2017		
	Drivers	Fatal Drivers	Injured Drivers	Drivers	Fatal Drivers	Injured Drivers	Drivers	Fatal Drivers	Injured Drivers	Drivers	Fatal Drivers	Injured Drivers	Drivers	Fatal Drivers	Injured Drivers
0 - 15	17	0	3	19	0	2	17	0	3	17	0	5	13	0	4
16 - 20	1,479	4	134	1,373	1	130	1,250	1	119	1,310	0	129	1,427	1	151
21 - 24	1,199	0	108	1,084	0	101	979	0	76	943	0	83	1,044	1	89
25 - 64	7,756	1	616	7,370	4	600	6,464	3	543	6,373	3	538	7,314	3	555
65 +	1,766	6	165	1,790	3	144	1,547	2	144	1,657	1	130	1,805	4	157
Unknown	0	0	0	2	0	0	3	0	0	1	0	0	2	0	0
Total	12,217	11	1,026	11,638	8	977	10,260	6	885	10,301	4	885	11,605	9	956

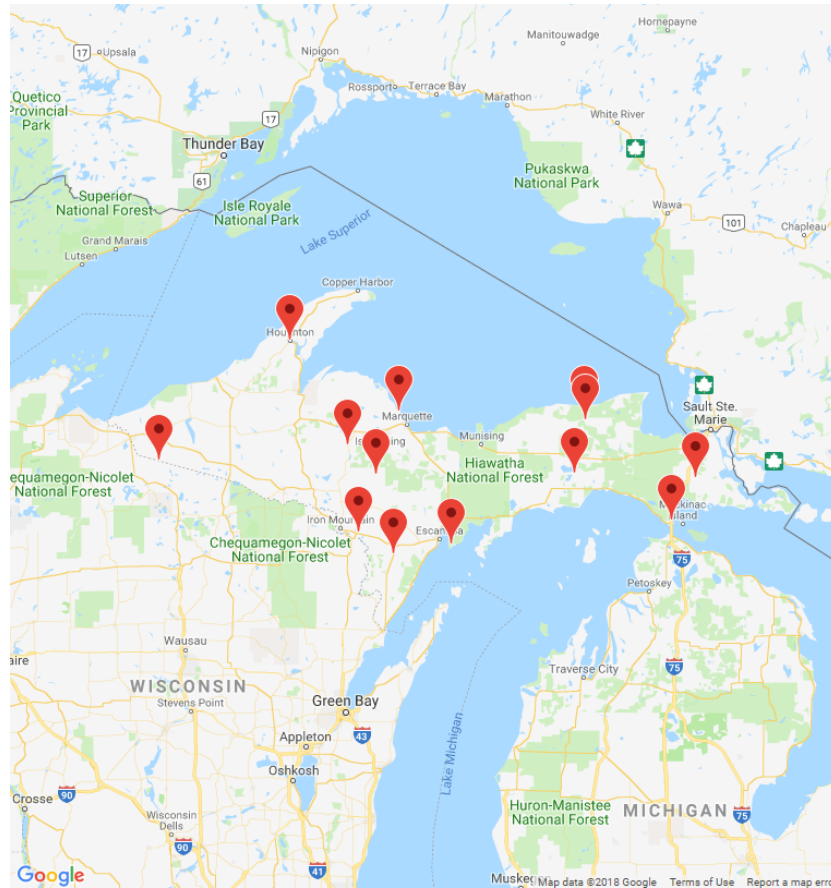
Note: Seatbelt Used includes shoulder belt only used, lap belt only used, both lap and shoulder belts used, and restraint failure.



# MSP District 8 - Upper Peninsula (continued)

## 5-Year Trend - Drivers in Crashes by Hazardous Action

Hazardous Action	2013		2014		2015		2016		2017	
	Total Drivers in Crashes	Drivers in Fatal Crashes	Total Drivers in Crashes	Drivers in Fatal Crashes	Total Drivers in Crashes	Drivers in Fatal Crashes	Total Drivers in Crashes	Drivers in Fatal Crashes	Total Drivers in Crashes	Drivers in Fatal Crashes
None	8,267	18	7,622	12	6,787	14	6,770	15	7,832	20
Speed too fast	1,409	13	1,393	6	1,063	2	1,093	8	1,182	11
Speed too slow	14	0	14	0	8	0	14	0	9	0
Failed to yield	1,007	1	1,104	5	960	3	917	5	903	6
Disregard traffic control	162	1	166	1	152	2	137	1	111	2
Drove wrong way	13	0	4	0	14	0	10	1	6	0
Drove left of center	73	5	59	2	64	1	57	1	52	0
Improper passing	50	0	73	0	43	0	52	0	46	0
Improper lane use	152	0	176	0	132	1	127	0	135	1
Improper turn	107	0	98	0	102	1	96	0	110	0
Improper/no signal	26	0	35	0	26	0	14	0	15	0
Improper backing	395	0	358	0	325	0	331	0	263	0
Unable to stop in assured clear distance	1,016	0	1,004	0	913	0	881	2	941	4
Other	418	2	392	1	328	2	353	3	396	2
Unknown	175	7	213	3	184	5	284	2	408	3
Reckless driving	76	0	57	0	58	4	46	1	68	0
Careless/negligent driving	501	4	450	1	446	5	458	3	521	4
Uncoded & errors	89	0	69	0	57	0	67	0	52	0
<b>Total</b>	<b>13,950</b>	<b>51</b>	<b>13,287</b>	<b>31</b>	<b>11,662</b>	<b>40</b>	<b>11,707</b>	<b>42</b>	<b>13,050</b>	<b>53</b>



The picture above represents all 2017 alcohol-involved fatal crashes in District 8.

In 2017, there were 365 alcohol-involved crashes in District 8:

- 13 K - Fatal Crashes
- 54 A - Suspected Serious Injury Crashes
- 44 B - Suspected Minor Injury Crashes
- 49 C - Possible Injury Crashes
- 205 O - Property Damage Only/No Injury Crashes

### Office of Highway Safety Planning

---

Physical Address:

7150 Harris Drive  
Dimondale, Michigan 48821

Mailing Address:

P.O. Box 30634  
Lansing, Michigan 48909

Phone: (517) 284-3112

Fax: (517) 284-3151

Find us on the web:

[MichiganTrafficCrashFacts.org](http://MichiganTrafficCrashFacts.org)

