



2017

MTCF
Michigan Traffic
Crash Facts

Michigan Traffic Crash Facts

Reporting Criteria

Please pay particular attention to the wording when interpreting the three levels of data gathered for this report.

Crash

The Crash Level analyzes data related to crash events and returns one result per crash.

Examples: Time, weather, and location.

Units

The Units Level analyzes the experience of the units in the crash and returns one result per vehicle, driver, pedestrian, bicyclist, or train.

Examples: Vehicle type, driver condition, and unit events.

People

The People Level analyzes the experience of the people involved in the crash and returns one result per occupant/person/party.

Examples: Age, injury severity, and seat belt or helmet use.

KABCO Injury Indicator:

K = Killed

A = Suspected Serious Injury

B = Suspected Minor Injury

C = Possible Injury

O = No Injury

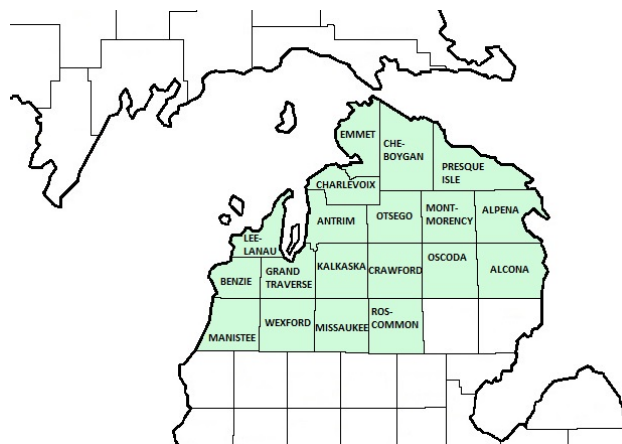
Property Damage Only (PDO)



Michigan State Police (MSP) District 7 - Northern Lower Peninsula

2017 Traffic Crash Data & 2013-2017 5-Year Trends

Beginning in 2011, District 7 is comprised of Alcona, Alpena, Antrim, Benzie, Charlevoix, Cheboygan, Crawford, Emmet, Grand Traverse, Kalkaska, Leelanau, Manistee, Missaukee, Montmorency, Oscoda, Otsego, Presque Isle, Roscommon, and Wexford counties. Trend tables for this report are based on those counties.



Sources:

The crashes in this report occurred on public roadways in Michigan and resulted in injuries, fatalities, or property damage (with \$1,000 as a reporting threshold). The information was gathered from Michigan Traffic Crash Report Forms (UD-10) submitted by local police departments, sheriff's offices, and the Michigan State Police. Other related information was obtained from the departments of Transportation, State, and Community Health.

This page left intentionally blank

MSP District 7 - Northern Lower Peninsula

- There were 18,396 crashes in District 7 during 2017. [Page 1]
- A total of 58 fatalities resulted from 51 fatal crashes in 2017 in District 7. [Page 1]
- There were 3,385 injuries and 2,463 injury crashes. [Page 1]
- There were 15,882 property damage only crashes (no fatalities or injuries). [Page 1]
- December had the highest number of crashes (2,349). [Pages 1-2]
- July and September had the highest number of fatal crashes (8) and fatalities (10). [Pages 1-2]
- July had the highest number of injury crashes (271) and injuries (395). [Page 1]
- December had the highest number of property damage only crashes (2,082). [Page 1]
- Of all vehicles involved in fatal crashes, 8 (10.4%) were motorcycles. [Page 1]
- Friday was the day of the week with the highest number of crashes (3,028) and Saturday had the highest number of fatal crashes (15). [Pages 2-3]
- The 6:00 AM - 8:59 AM time period had the highest number of crashes (3,313). The Noon - 2:59 PM time period had the highest number of fatal crashes (13). [Pages 5-6]
- During the period from 2013 to 2017, the highest number of deer crashes occurred in 2017 (7,715). The 6:00 AM - 8:59 AM time period had the highest number of deer-involved crashes. There were 2 fatal crashes involving deer in 2017. [Pages 7-8]
- Grand Traverse County (20.3%) had the highest number of crashes in District 7 in 2017, followed by Emmet County (8.0%), and Wexford County (6.9%). [Page 8]
- Grand Traverse County (13.8%) had the highest number of fatalities in District 7 in 2017, followed by Otsego County (12.1%), and Wexford County (10.3%). [Page 8]
- The highest number of drivers in crashes (25,112) occurred during 2017 and the highest number of drivers coded drinking in crashes (668) occurred during 2017 within the five year period between 2013 and 2017. [Page 9]
- A total of 674 crashes involved alcohol in 2017. [Page 10]
- Alcohol-involved fatal crashes were the highest in 2013 during the five-year period from 2013 to 2017 at 27. [Page 10]
- A total of 170 crashes, 9 fatal crashes, and 23 suspected serious injury crashes involved drugs in 2017. [Page 11]
- There were 23,172 drivers wearing seatbelts and 264 drivers not wearing seatbelts in crashes in 2017. Of the 264 drivers not wearing seat belts, 10 (3.8%) were killed and 103 (39.0%) were injured. [Pages 14-16]
- The most common hazardous action coded for drivers in 2017 in all crashes was speed too fast (2,797), while the most common hazardous action coded for drivers in fatal crashes was speed too fast (14). [Page 17]

MSP District 7 - Northern Lower Peninsula (continued)

District 7 Experience

In 2017:

There were 25,112 drivers involved in 18,396 motor vehicle crashes in MSP District 7. Of those crashes, 51 were classified as fatal, resulting in 58 fatalities. An additional 3,385 persons were injured.

District 7 experienced the highest number of motor vehicle crashes (2,349) in December, the highest number of fatal crashes (8) and the highest number of persons killed (10) in July and September.

Michigan driver statistics indicate 5.5 percent of licensed drivers in District 7 were age 16-20, and 10.7 percent of drivers in crashes were also in that age group.

2017 - Crashes and Injuries by Month

Month	Crashes				Persons	
	Total	Fatal	Injury	Property Damage Only (PDO)	Fatalities	Injuries
January	1,647	3	206	1,438	5	297
February	1,395	2	169	1,224	2	222
March	1,204	3	138	1,063	3	194
April	859	3	126	730	3	173
May	1,198	3	183	1,012	3	246
June	1,390	5	221	1,164	5	289
July	1,425	8	271	1,146	10	395
August	1,364	4	258	1,102	4	377
September	1,486	8	213	1,265	10	296
October	1,877	4	211	1,662	5	286
November	2,202	4	204	1,994	4	256
December	2,349	4	263	2,082	4	354
Total	18,396	51	2,463	15,882	58	3,385

2017 - Driver Statistics

Age Group	District 7			Driver Rates	
	2017 Population	Licensed Drivers	Drivers in Crashes	Per 10k Population	Per 10k Licensed
0 - 15	76,991	2,389	44	5.7	184.2
16 - 20	24,106	20,516	2,681	1,112.2	1,306.8
21 - 24	18,979	18,280	1,966	1,035.9	1,075.5
25 - 64	231,517	224,792	15,840	684.2	704.7
65 +	109,253	105,247	3,625	331.8	344.4
Unknown	0	0	956	--	--
Total	460,846	371,224	25,112	544.9	676.5

2017 - Vehicles in Crashes

Vehicle Type	Motor Vehicles		Fatal Crashes		Injury Crashes	PDO Crashes
	Number of Vehicles	% of Total	Number	% of Total	Number	Number
Passenger car, SUV, van	18,544	73.8	46	59.7	2,849	15,649
Motor home	140	0.6	0	0.0	14	126
Pickup truck	5,010	20.0	12	15.6	654	4,344
Small truck under 10,000 lbs. GVWR	271	1.1	0	0.0	36	235
Motorcycle	172	0.7	8	10.4	119	45
Moped / goped	27	0.1	0	0.0	21	6
Go-cart / golf cart	3	0.0	0	0.0	3	0
Snowmobile	47	0.2	0	0.0	38	9
Off-Road Vehicle - ORV / All-Terrain Vehicle - ATV	89	0.4	5	6.5	63	21
Other	84	0.3	1	1.3	15	68
Truck/bus over 10,000 lbs.	472	1.9	5	6.5	71	396
Unknown	253	1.0	0	0.0	9	244
Total	25,112	100.0	77	100.0	3,892	21,143

5-Year Trend - Crashes by Month

Month	2013		2014		2015		2016		2017	
	Total Crashes	Fatal Crashes	Total Crashes	Fatal Crashes	Total Crashes	Fatal Crashes	Total Crashes	Fatal Crashes	Total Crashes	Fatal Crashes
January	1,718	5	2,027	3	1,712	5	1,525	5	1,647	3
February	1,365	8	1,481	3	1,440	4	1,363	2	1,395	2
March	1,162	2	1,488	1	1,050	2	1,048	2	1,204	3
April	1,147	3	1,089	4	989	2	1,076	4	859	3
May	1,049	3	1,073	4	1,081	5	1,148	6	1,198	3
June	1,349	6	1,310	4	1,477	3	1,379	6	1,390	5
July	1,290	7	1,267	5	1,389	8	1,455	9	1,425	8
August	1,226	9	1,178	5	1,274	8	1,272	11	1,364	4
September	1,248	12	1,098	9	1,163	7	1,260	10	1,486	8
October	1,553	3	1,520	3	1,533	1	1,434	8	1,877	4
November	2,303	8	2,387	4	1,992	7	1,942	5	2,202	4
December	2,145	4	1,667	4	1,335	4	2,010	6	2,349	4
Total	17,555	70	17,585	49	16,435	56	16,912	74	18,396	51

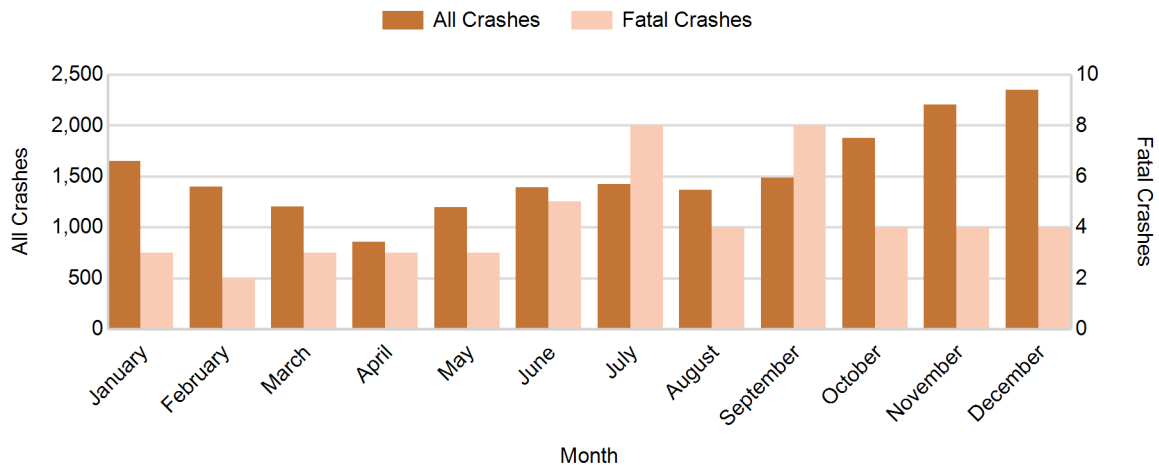
Note: † Indicates that the highest number of total crashes reported in the 5-year period occurred in the same month

5-Year Trend - Crashes by Day of Week

Day	2013		2014		2015		2016		2017	
	Total Crashes	Fatal Crashes	Total Crashes	Fatal Crashes	Total Crashes	Fatal Crashes	Total Crashes	Fatal Crashes	Total Crashes	Fatal Crashes
Monday	2,518	12	2,439	8	2,277	6	2,380	9	2,533	5
Tuesday	2,629	7	2,607	5	2,272	8	2,366	12	2,644	5
Wednesday	2,604	7	2,648	6	2,498	15	2,602	7	2,718	4
Thursday	2,760	6	2,590	5	2,531	8	2,550	12	2,844	9
Friday	2,814 †	14	3,049 †	5	2,678 †	9	2,835 †	11	3,028 †	5
Saturday	2,336	14	2,232	12	2,245	6	2,210	12	2,506	15
Sunday	1,894	10	2,020	8	1,934	4	1,969	11	2,123	8
Total	17,555	70	17,585	49	16,435	56	16,912	74	18,396	51

Note: † Indicates that the highest number of total crashes reported in the 5-year period occurred on the same day of the week

2017 Crashes by Month

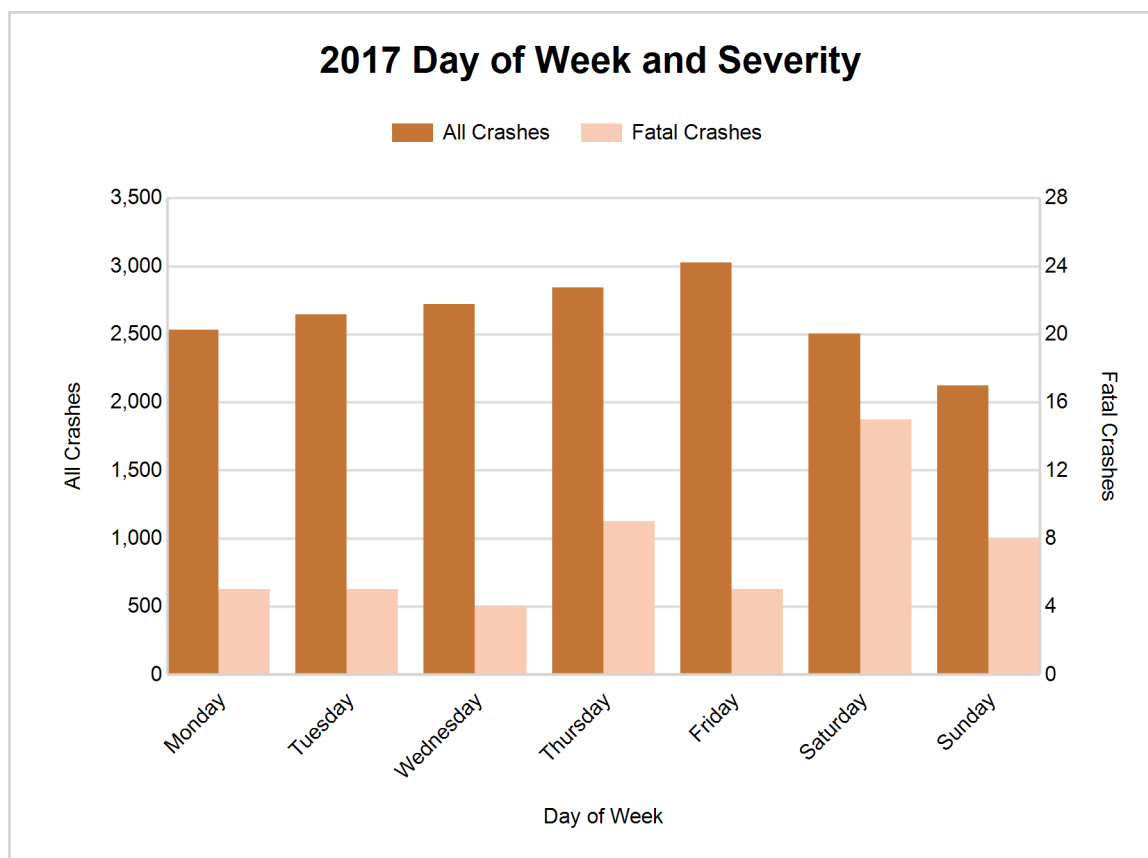


MSP District 7 - Northern Lower Peninsula (continued)

2017 - Crashes by Day of Week

Day	All Crashes		Fatal Crashes		Injury Crashes			PDO Crashes
	Number	% of Total	Number	% of Fatal	A	B	C	Number
Monday	2,533	13.8	5	9.8	45	103	172	2,208
Tuesday	2,644	14.4	5	9.8	47	101	184	2,307
Wednesday	2,718	14.8	4	7.8	36	104	197	2,377
Thursday	2,844	15.5	9	17.6	37	122	209	2,467
Friday	3,028	16.5	5	9.8	47	140	220	2,616
Saturday	2,506	13.6	15	29.4	77	131	176	2,107
Sunday	2,123	11.5	8	15.7	59	106	150	1,800
Total	18,396	100.0	51	100.0	348	807	1,308	15,882

2017 Day of Week and Severity

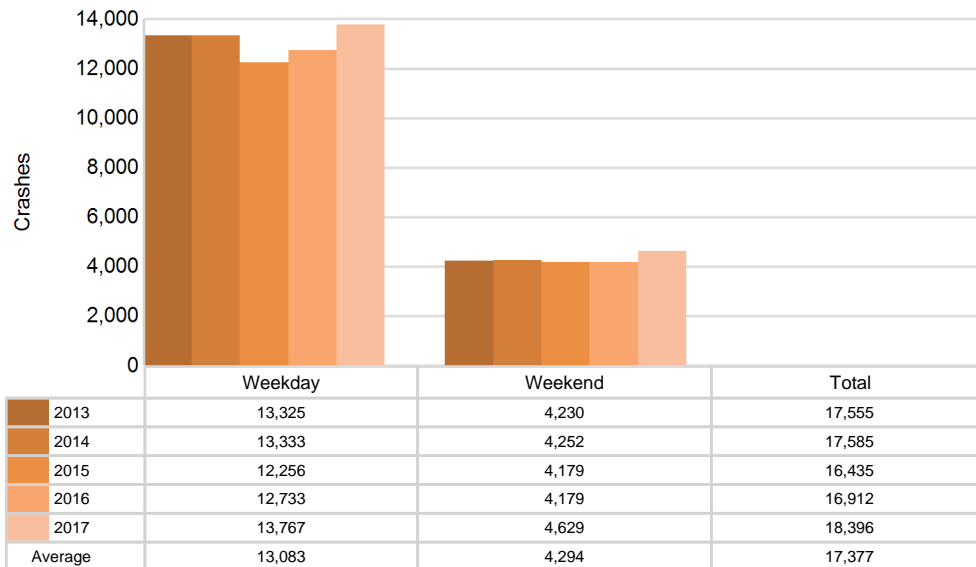


MSP District 7 - Northern Lower Peninsula (continued)

5-Year Trend - Crashes by Weekday and Weekend

Portion of Week	2013		2014		2015		2016		2017	
	Total Crashes	Fatal Crashes	Total Crashes	Fatal Crashes	Total Crashes	Fatal Crashes	Total Crashes	Fatal Crashes	Total Crashes	Fatal Crashes
Weekday	13,325	46	13,333	29	12,256	46	12,733	51	13,767	28
Weekend	4,230	24	4,252	20	4,179	10	4,179	23	4,629	23
Total	17,555	70	17,585	49	16,435	56	16,912	74	18,396	51

5-Year Crash Trends by Weekday (Monday - Friday) and Weekend (Saturday & Sunday)

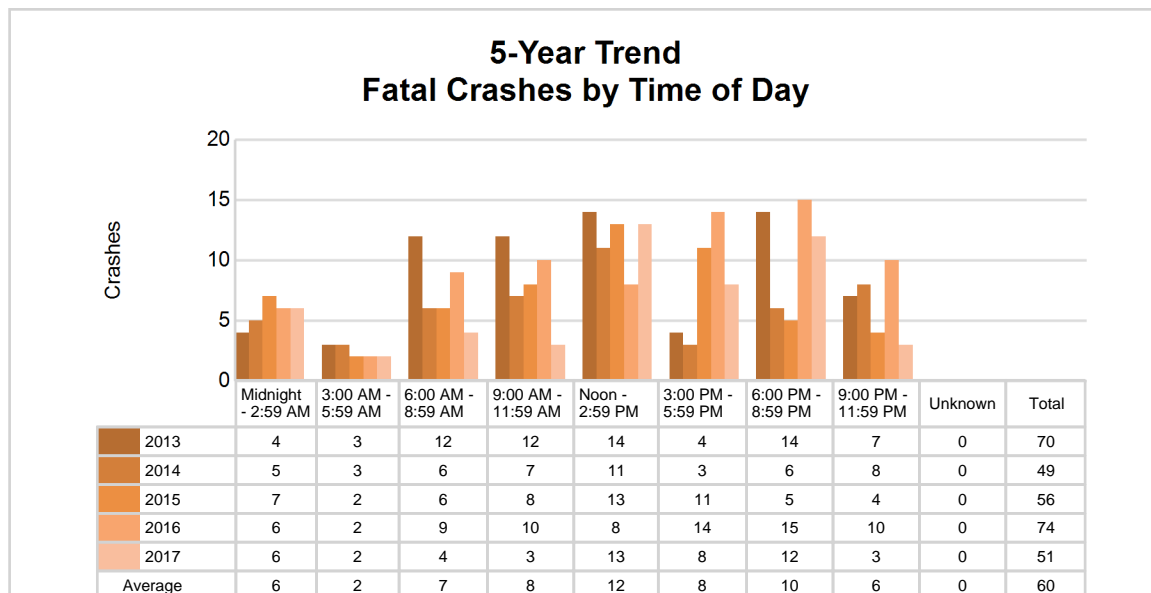
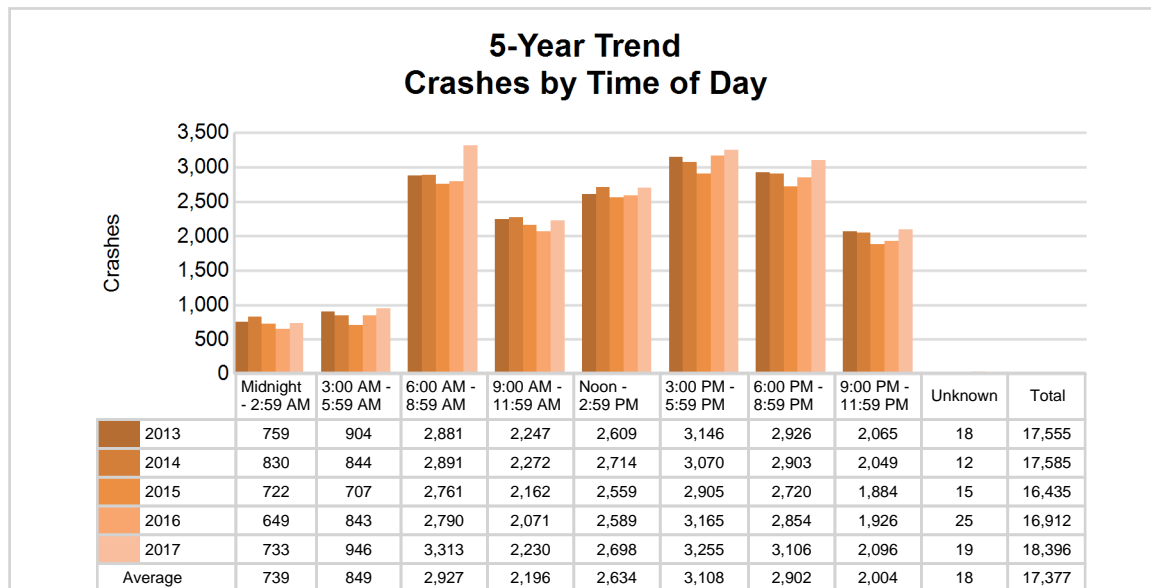


MSP District 7 - Northern Lower Peninsula (continued)

5-Year Trend - Crashes by Time of Day

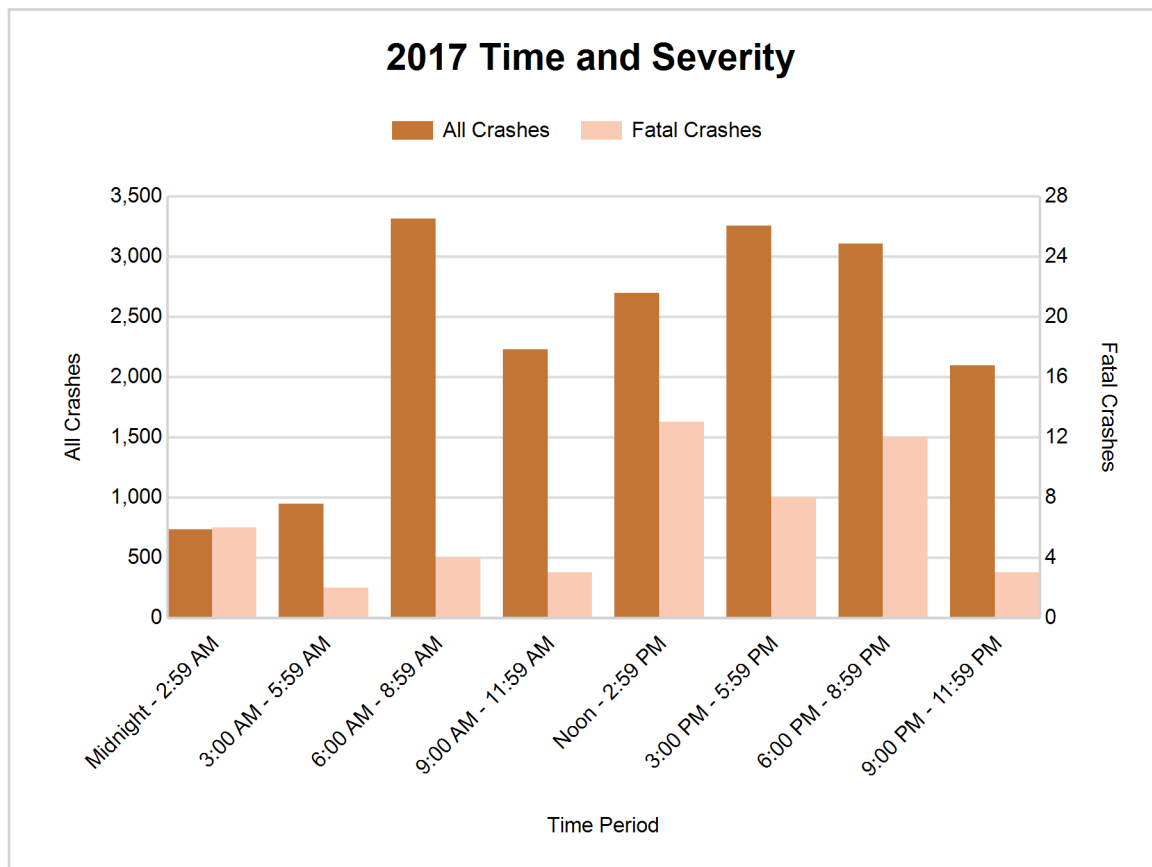
Time of Day	2013		2014		2015		2016		2017	
	Total Crashes	Fatal Crashes	Total Crashes	Fatal Crashes	Total Crashes	Fatal Crashes	Total Crashes	Fatal Crashes	Total Crashes	Fatal Crashes
Midnight - 2:59 AM	759	4	830	5	722	7	649	6	733	6
3:00 AM - 5:59 AM	904	3	844	3	707	2	843	2	946	2
6:00 AM - 8:59 AM	2,881	12	2,891	6	2,761	6	2,790	9	3,313	4
9:00 AM - 11:59 AM	2,247	12	2,272	7	2,162	8	2,071	10	2,230	3
Noon - 2:59 PM	2,609	14	2,714	11	2,559	13	2,589	8	2,698	13
3:00 PM - 5:59 PM	3,146	4	3,070	3	2,905	11	3,165	14	3,255	8
6:00 PM - 8:59 PM	2,926	14	2,903	6	2,720	5	2,854	15	3,106	12
9:00 PM - 11:59 PM	2,065	7	2,049	8	1,884	4	1,926	10	2,096	3
Unknown	18	0	12	0	15	0	25	0	19	0
Total	17,555	70	17,585	49	16,435	56	16,912	74	18,396	51

Note: † Indicates that the highest number of total crashes reported in the 5-year period occurred in the same time period



2017 - Time and Severity

Time of Day	All Crashes		Fatal Crashes		Injury Crashes			PDO Crashes
	Number	% of Total	Number	% of Fatal	A	B	C	Number
Midnight - 2:59 AM	733	4.0	6	11.8	22	52	47	606
3:00 AM - 5:59 AM	946	5.1	2	3.9	12	23	38	871
6:00 AM - 8:59 AM	3,313	18.0	4	7.8	28	85	167	3,029
9:00 AM - 11:59 AM	2,230	12.1	3	5.9	47	86	188	1,906
Noon - 2:59 PM	2,698	14.7	13	25.5	68	154	292	2,171
3:00 PM - 5:59 PM	3,255	17.7	8	15.7	73	199	335	2,640
6:00 PM - 8:59 PM	3,106	16.9	12	23.5	68	117	144	2,765
9:00 PM - 11:59 PM	2,096	11.4	3	5.9	29	91	94	1,879
Unknown	19	0.1	0	0.0	1	0	3	15
Total	18,396	100.0	51	100.0	348	807	1,308	15,882

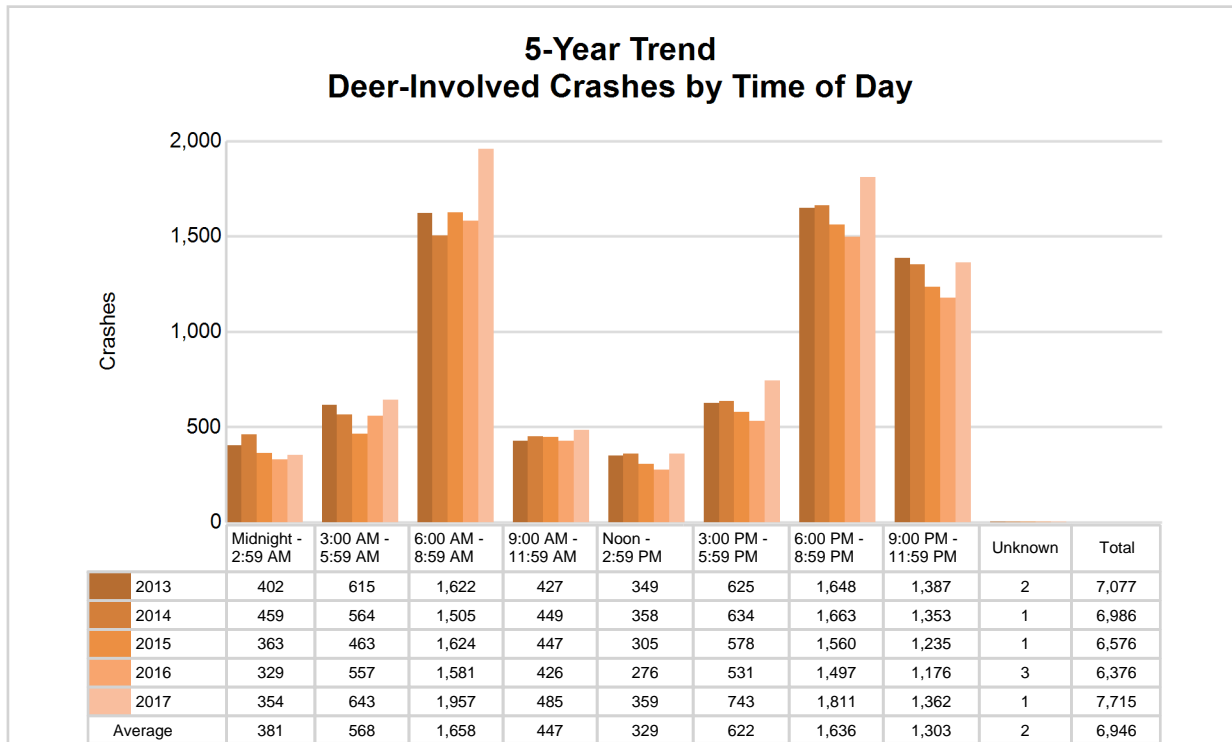


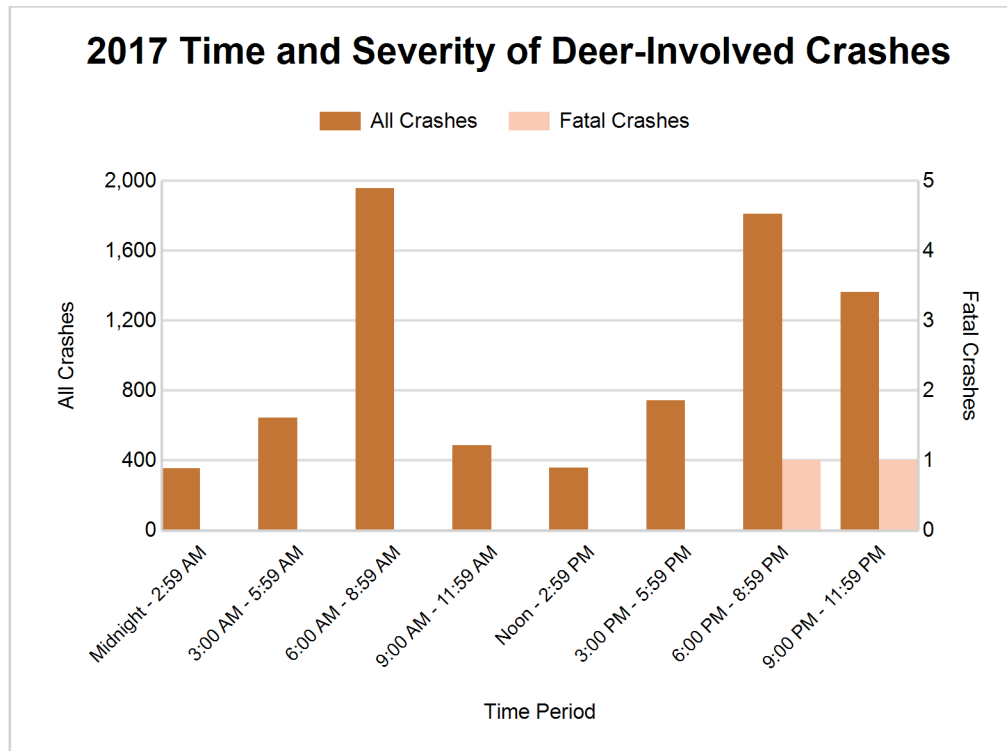
MSP District 7 - Northern Lower Peninsula (continued)

5-Year Trend - Deer-Involved Crashes by Time of Day

Time of Day	2013		2014		2015		2016		2017	
	Total Crashes	Fatal Crashes	Total Crashes	Fatal Crashes	Total Crashes	Fatal Crashes	Total Crashes	Fatal Crashes	Total Crashes	Fatal Crashes
Midnight - 2:59 AM	402	0	459	0	363	0	329	1	354	0
3:00 AM - 5:59 AM	615	0	564	0	463	0	557	0	643	0
6:00 AM - 8:59 AM	1,622	0	1,505	0	1,624	0	1,581	0	1,957	0
9:00 AM - 11:59 AM	427	0	449	0	447	0	426	0	485	0
Noon - 2:59 PM	349	0	358	0	305	0	276	0	359	0
3:00 PM - 5:59 PM	625	0	634	0	578	0	531	0	743	0
6:00 PM - 8:59 PM	1,648	0	1,663	0	1,560	0	1,497	1	1,811	1
9:00 PM - 11:59 PM	1,387	0	1,353	0	1,235	0	1,176	1	1,362	1
Unknown	2	0	1	0	1	0	3	0	1	0
Total	7,077	0	6,986	0	6,576	0	6,376	3	7,715	2

Note: † Indicates that the highest number of total crashes reported in the 5-year period occurred in the same time period





2017 - Reported Motor Vehicle Crashes by County

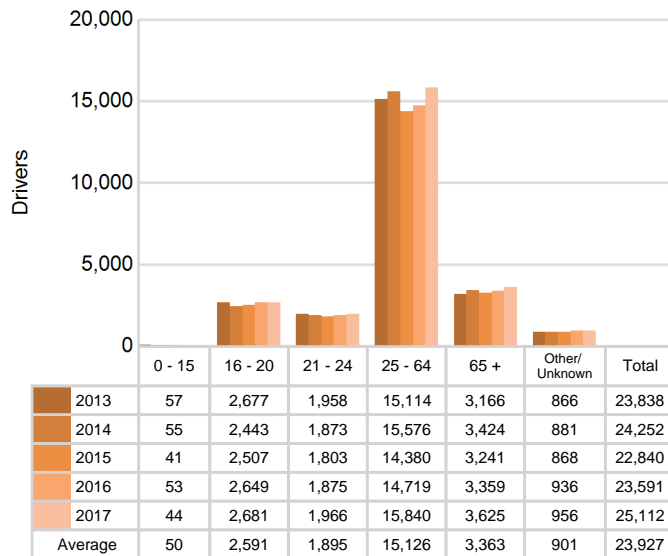
County	Crashes											Persons	
	Total	Fatal	Injury	Property Damage	Inter-state	US Route	State Route	Local Street	Alcohol-Involved	Drug-Involved	Deer-Involved	Fatalities	Injuries
Alcona	676	2	58	616	0	120	145	409	19	1	517	2	85
Alpena	861	3	123	735	0	175	196	485	34	13	350	3	166
Antrim	971	3	121	847	0	221	184	557	43	9	498	4	161
Benzie	634	0	82	552	0	162	123	345	32	10	305	0	104
Charlevoix	1,187	3	124	1,060	0	317	230	638	45	8	607	3	170
Cheboygan	1,125	3	147	975	274	68	251	528	29	6	555	3	199
Crawford	602	4	77	521	154	34	165	245	25	7	301	4	110
Emmet	1,476	2	197	1,277	5	457	142	869	53	10	538	2	276
Grand Traverse	3,734	8	609	3,117	0	1,027	491	2,215	122	32	665	8	834
Kalkaska	559	3	102	454	0	127	150	276	22	13	220	3	148
Leelanau	671	2	91	578	0	0	306	362	42	11	316	3	122
Manistee	967	3	99	865	0	256	182	527	22	7	544	3	140
Missaukee	633	0	61	572	0	0	240	392	22	9	389	0	84
Montmorency	381	1	31	349	0	0	180	200	15	1	246	1	35
Oscoda	287	1	29	257	0	0	147	139	3	2	169	2	41
Otsego	967	5	147	815	224	0	281	455	38	12	318	7	206
Presque Isle	649	1	34	614	0	120	225	304	17	2	504	1	48
Roscommon	740	3	113	624	101	102	218	310	30	7	288	3	151
Wexford	1,276	4	218	1,054	0	348	410	514	61	10	385	6	305
Total	18,396	51	2,463	15,882	758	3,534	4,266	9,770	674	170	7,715	58	3,385

MSP District 7 - Northern Lower Peninsula (continued)

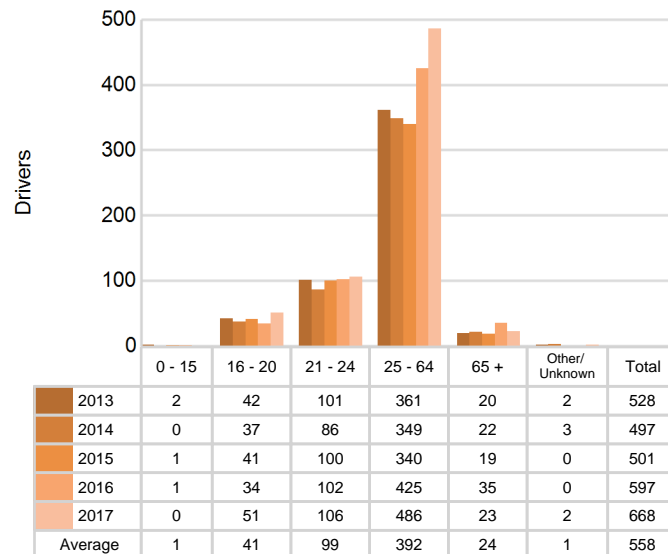
5-Year Trend - Drivers in Crashes Coded Drinking by Driver Age

Driver Age	2013		2014		2015		2016		2017	
	Total Drivers in Crashes	Total Drivers Coded Drinking	Total Drivers in Crashes	Total Drivers Coded Drinking	Total Drivers in Crashes	Total Drivers Coded Drinking	Total Drivers in Crashes	Total Drivers Coded Drinking	Total Drivers in Crashes	Total Drivers Coded Drinking
0 - 15	57	2	55	0	41	1	53	1	44	0
16 - 20	2,677	42	2,443	37	2,507	41	2,649	34	2,681	51
21 - 24	1,958	101	1,873	86	1,803	100	1,875	102	1,966	106
25 - 64	15,114	361	15,576	349	14,380	340	14,719	425	15,840	486
65 +	3,166	20	3,424	22	3,241	19	3,359	35	3,625	23
Unknown	866	2	881	3	868	0	936	0	956	2
Total	23,838	528	24,252	497	22,840	501	23,591	597	25,112	668

**5-Year Trend
Total Drivers in Crashes by Age**



**5-Year Trend
Total Drivers Coded Drinking by Age**



MSP District 7 - Northern Lower Peninsula (continued)

10

2017 - Bodily Alcohol Concentration (BAC) Results Among All Vehicle Drivers in Alcohol-Involved Crashes by Age

Age Group	Drivers				BAC Result Range for Drivers Coded Drinking				
	Total Drivers in Alcohol-Involved Crashes	Total Drivers Tested in all Crashes	Total Drivers Coded Drinking, Tested	Total Drivers Coded Drinking	BAC = 0.00	BAC 0.01 g/dL to 0.07 g/dL	BAC 0.08 g/dL to 0.16 g/dL	BAC 0.17 g/dL and Above	BAC Not Reported
0 - 15	0	0	0	0	0	0	0	0	0
16 - 20	62	63	38	51	3	5	13	5	25
21 - 24	117	115	92	106	2	16	35	20	33
25 - 64	582	522	389	486	7	47	127	117	188
65 +	40	43	18	23	0	3	4	5	11
Unknown	39	0	0	2	0	0	0	0	2
Total	840	743	537	668	12	71	179	147	259

Notes: BAC measured in grams (g) per deciliter (dL).

BAC may not be reported if drivers are not tested or if the results are not available immediately (as in the case of a blood test).

A driver may be coded by the officer as drinking even though no test is administered.

Alcohol-Involved Crashes

In 2017, there were 840 drivers in alcohol-involved crashes; 668 (79.5%) of those drivers were coded as had-been-drinking by the officer on the crash form.

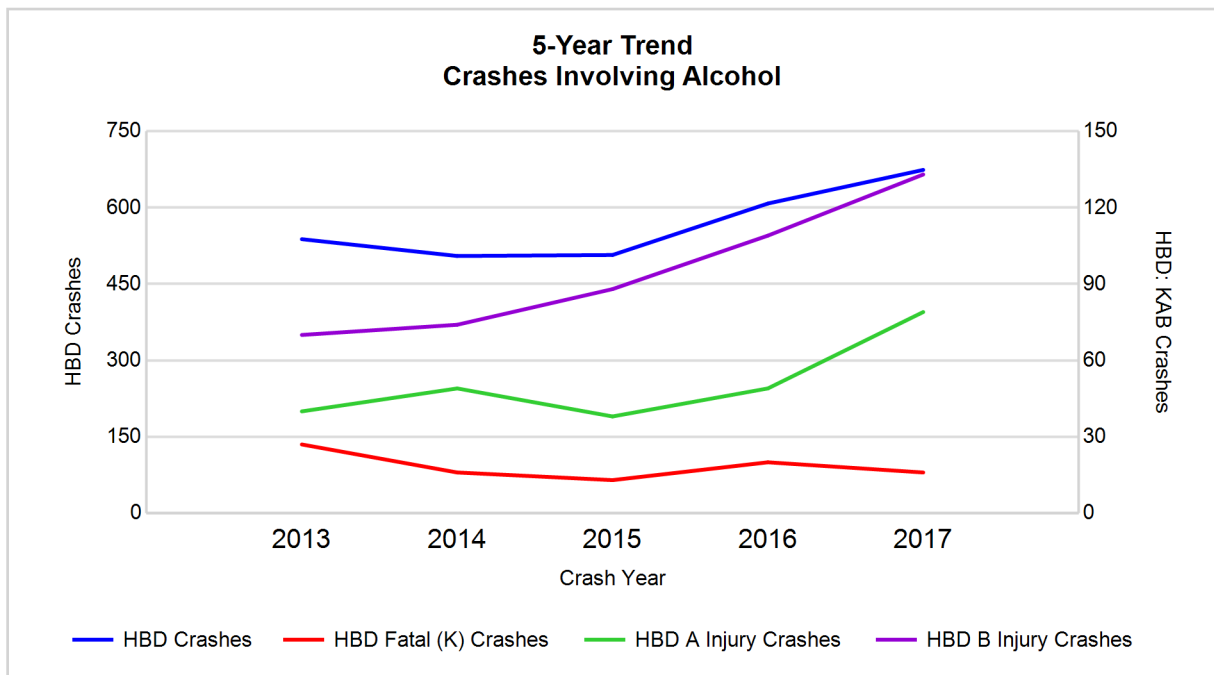
- 326 (48.8%) of the 668 drivers had a blood alcohol concentration (BAC) of 0.08 g/dL (grams per deciliter) or greater, and 147 (45.1%) of the 326 drivers had a BAC at or above 0.17 g/dL.
- 537 (80.4%) of the 668 drivers were coded as had-been-drinking and were tested for alcohol consumption.

5-Year Trend - Crashes Involving Alcohol

Year	All Crashes	HBD Crashes	% HBD	Fatal Crashes	HBD Fatal Crashes	% HBD	A Injury Crashes	HBD A Injury Crashes	% HBD	B Injury Crashes	HBD B Injury Crashes	% HBD
2013	17,555	538	3.1	70	27	38.6	284	40	14.1	671	70	10.4
2014	17,585	505	2.9	49	16	32.7	268	49	18.3	637	74	11.6
2015	16,435	507	3.1	56	13	23.2	241	38	15.8	645	88	13.6
2016	16,912	608	3.6	74	20	27.0	296	49	16.6	748	109	14.6
2017	18,396**	674**	3.7**	51	16	31.4	348**	79**	22.7**	807**	133**	16.5**

Note: * Indicates that the most recent year is the lowest number or percentage reported in the 5-year period in that column

** Indicates that the most recent year is the highest number or percentage reported in the 5-year period in that column



Note: Had-Been-Drinking (HBD)

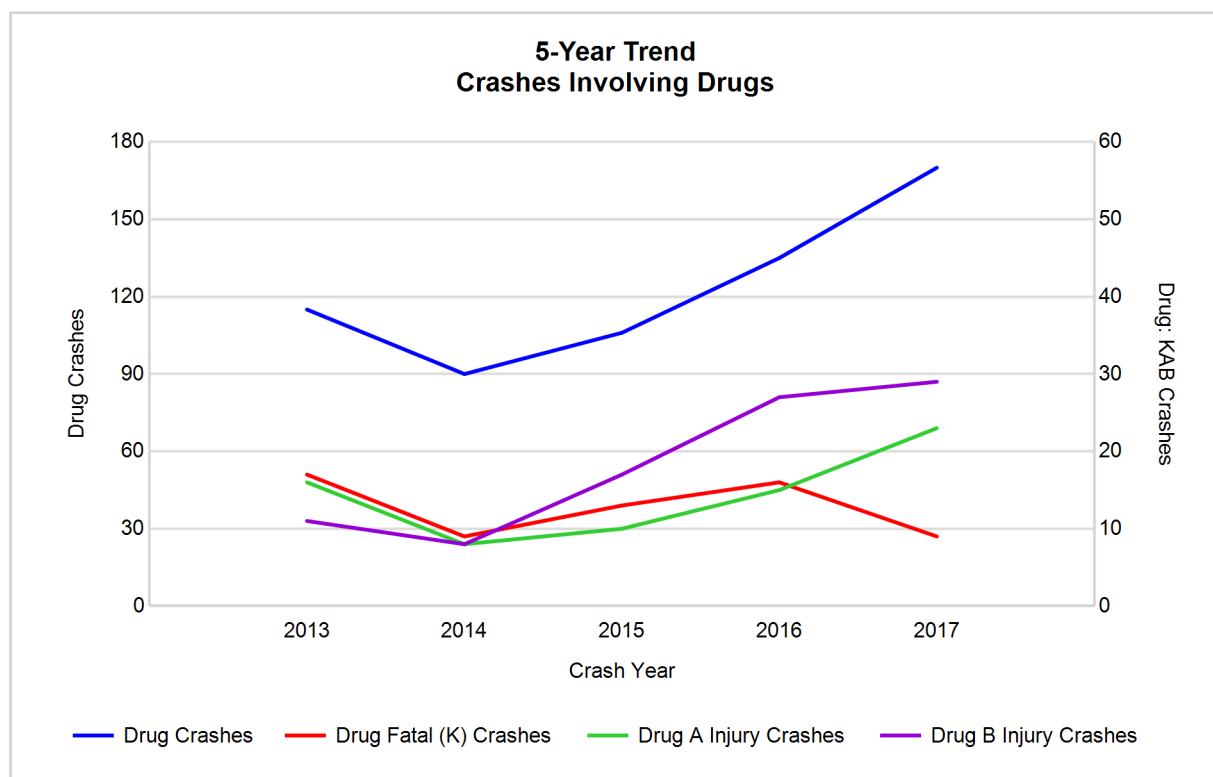
MSP District 7 - Northern Lower Peninsula (continued)

5-Year Trend - Crashes Involving Drugs

Year	All Crashes	Drug Crashes	% Drug	Fatal Crashes	Drug Fatal Crashes	% Drug	A Injury Crashes	Drug A Injury Crashes	% Drug	B Injury Crashes	Drug B Injury Crashes	% Drug
2013	17,555	115	0.7	70	17	24.3	284	16	5.6	671	11	1.6
2014	17,585	90	0.5	49	9	18.4	268	8	3.0	637	8	1.3
2015	16,435	106	0.6	56	13	23.2	241	10	4.1	645	17	2.6
2016	16,912	135	0.8	74	16	21.6	296	15	5.1	748	27	3.6
2017	18,396**	170**	0.9**	51	9	17.6*	348**	23**	6.6**	807**	29**	3.6

Note: * Indicates that the most recent year is the lowest number or percentage reported in the 5-year period in that column

** Indicates that the most recent year is the highest number or percentage reported in the 5-year period in that column



MSP District 7 - Northern Lower Peninsula (continued)

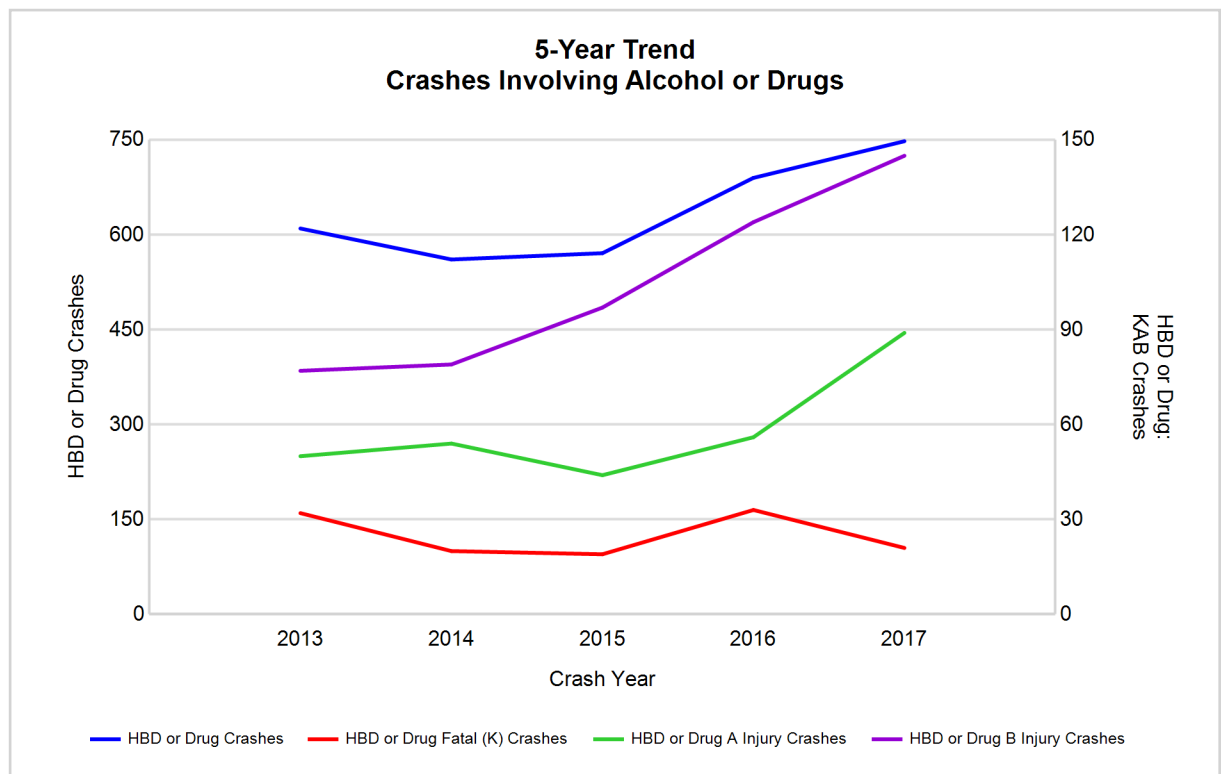
12

5-Year Trend - Crashes Involving Alcohol or Drugs

Year	All Crashes	HBD or Drug Crashes	% HBD or Drug	Fatal Crashes	HBD or Drug Fatal Crashes	% HBD or Drug	A Injury Crashes	HBD or Drug A Injury Crashes	% HBD or Drug	B Injury Crashes	HBD or Drug B Injury Crashes	% HBD or Drug
2013	17,555	610	3.5	70	32	45.7	284	50	17.6	671	77	11.5
2014	17,585	561	3.2	49	20	40.8	268	54	20.1	637	79	12.4
2015	16,435	571	3.5	56	19	33.9	241	44	18.3	645	97	15.0
2016	16,912	690	4.1	74	33	44.6	296	56	18.9	748	124	16.6
2017	18,396**	748**	4.1	51	21	41.2	348**	89**	25.6**	807**	145**	18.0**

Note: * Indicates that the most recent year is the lowest number or percentage reported in the 5-year period in that column

** Indicates that the most recent year is the highest number or percentage reported in the 5-year period in that column



Note: Had-Been-Drinking (HBD)

MSP District 7 - Northern Lower Peninsula (continued)

2017 - Restraints Worn Among Vehicle Drivers and Injured Passengers by Vehicle Type

Vehicle Type	Total Occupants			Fatalities			A - Suspected Serious			B - Suspected Minor			C - Possible Injury			No Injury		
	Total	Used Restraint	%	Total	Used Restraint	%	Total	Used Restraint	%	Total	Used Restraint	%	Total	Used Restraint	%	Total	Used Restraint	%
Passenger car, SUV, van	19,226	18,176	94.5	32	23	71.9	236	194	82.2	709	642	90.6	1,520	1,461	96.1	16,122	15,781	97.9
Motor home	144	133	92.4	0	0	0.0	0	0	0.0	3	2	66.7	7	6	85.7	127	124	97.6
Pickup truck	5,136	4,829	94.0	7	3	42.9	65	53	81.5	144	118	81.9	260	246	94.6	4,479	4,383	97.9
Small truck under 10,000 lbs. GVWR	276	256	92.8	0	0	0.0	2	2	100.0	7	7	100.0	14	13	92.9	240	233	97.1
Motorcycle	192	136	70.8	9	5	55.6	47	28	59.6	53	40	75.5	32	26	81.3	50	37	74.0
Moped / goped	29	8	27.6	0	0	0.0	6	1	16.7	11	5	45.5	4	1	25.0	8	1	12.5
Go-cart / golf cart	4	0	0.0	0	0	0.0	2	0	0.0	0	0	0.0	1	0	0.0	1	0	0.0
Snowmobile	50	47	94.0	0	0	0.0	18	18	100.0	12	11	91.7	10	10	100.0	7	6	85.7
Off-Road Vehicle - ORV / All-Terrain Vehicle - ATV	110	45	40.9	5	1	20.0	36	10	27.8	30	14	46.7	11	5	45.5	25	15	60.0
Other	85	52	61.2	1	0	0.0	2	0	0.0	2	0	0.0	2	0	0.0	68	51	75.0
Truck/bus over 10,000 lbs.	477	441	92.5	0	0	0.0	0	0	0.0	7	5	71.4	26	23	88.5	430	412	95.8
Unknown	253	4	1.6	0	0	0.0	0	0	0.0	0	0	0.0	0	0	0.0	6	4	66.7
Total	25,982	24,127	92.9	54	32	59.3	414	306	73.9	978	844	86.3	1,887	1,791	94.9	21,563	21,047	97.6

Note: Restraint Use includes shoulder belt only used, lap belt only used, both lap and shoulder belts used, child restraint used, restraint failure, and helmet worn.

2017 - Restraints Worn Among Vehicle Drivers and Injured Passengers by Age

Age Group	Total Occupants			Fatalities			A - Suspected Serious			B - Suspected Minor			C - Possible Injury			No Injury		
	Total	Used Restraint	%	Total	Used Restraint	%	Total	Used Restraint	%	Total	Used Restraint	%	Total	Used Restraint	%	Total	Used Restraint	%
0 - 15	249	226	90.8	0	0	0.0	17	12	70.6	70	58	82.9	129	124	96.1	33	32	97.0
16 - 20	2,807	2,723	97.0	4	2	50.0	49	35	71.4	146	129	88.4	274	259	94.5	2,323	2,288	98.5
21 - 24	2,037	1,930	94.7	4	2	50.0	35	22	62.9	114	84	73.7	156	145	92.9	1,717	1,668	97.1
25 - 64	16,176	15,582	96.3	32	17	53.1	245	182	74.3	499	437	87.6	1,055	997	94.5	14,235	13,881	97.5
65 +	3,755	3,657	97.4	14	11	78.6	67	54	80.6	148	135	91.2	272	265	97.4	3,228	3,172	98.3
Unknown	958	9	0.9	0	0	0.0	1	1	100.0	1	1	100.0	1	1	100.0	27	6	22.2
Total	25,982	24,127	92.9	54	32	59.3	414	306	73.9	978	844	86.3	1,887	1,791	94.9	21,563	21,047	97.6

Note: Restraint Use includes shoulder belt only used, lap belt only used, both lap and shoulder belts used, child restraint used, restraint failure, and helmet worn.

MSP District 7 - Northern Lower Peninsula (continued)

14

5-Year Trend - Restraint Use Among Drivers

Restraint Use	2013			2014			2015			2016			2017		
	Drivers	Fatal Drivers	Injured Drivers	Drivers	Fatal Drivers	Injured Drivers	Drivers	Fatal Drivers	Injured Drivers	Drivers	Fatal Drivers	Injured Drivers	Drivers	Fatal Drivers	Injured Drivers
No belts available	105	1	22	187	0	21	114	1	18	87	0	17	77	1	26
Shoulder belt only used	13	0	2	38	0	9	45	0	11	79	0	10	119	0	12
Lap belt only used	60	0	10	83	0	5	73	0	3	63	0	12	50	0	3
Both lap & shoulder belts used	22,002	24	1,827	22,243	16	1,703	20,949	14	1,743	21,591	26	1,874	22,995	21	2,039
No belts used	142	14	60	179	4	67	165	13	73	178	12	81	187	9	77
Child restraint used	2	0	0	1	0	0	0	0	0	9	0	1	7	0	1
Child restraint not used, unavailable or improper use	3	0	0	1	0	0	1	0	1	0	0	0	0	0	0
Restraint failure	16	0	1	7	1	1	4	0	0	9	0	2	8	0	2
Restraint use unknown	453	2	53	483	2	59	435	5	43	803	3	47	1,223	1	63
Helmet worn	245	6	177	240	6	179	207	7	145	219	5	165	197	5	139
Helmet not worn	58	8	46	54	1	38	74	1	56	73	8	50	78	5	52
Helmet use unknown	11	2	5	9	0	3	16	1	8	26	3	14	13	2	5
Uncoded & errors	728	0	2	727	0	2	757	0	2	454	0	3	158	0	0
Total	23,838	57	2,205	24,252	30	2,087	22,840	42	2,103	23,591	57	2,276	25,112	44	2,419

5-Year Trend - Restraint Use Among Drivers Coded Drinking

Restraint Use	2013			2014			2015			2016			2017		
	Drivers	Fatal Drivers	Injured Drivers	Drivers	Fatal Drivers	Injured Drivers	Drivers	Fatal Drivers	Injured Drivers	Drivers	Fatal Drivers	Injured Drivers	Drivers	Fatal Drivers	Injured Drivers
No belts available	1	0	1	6	0	1	4	0	3	3	0	1	3	0	2
Shoulder belt only used	2	0	2	2	0	2	2	0	0	2	0	2	5	0	2
Lap belt only used	3	0	2	2	0	0	1	0	1	1	0	1	0	0	0
Both lap & shoulder belts used	366	5	95	345	3	94	360	2	111	438	4	122	470	2	135
No belts used	36	9	16	32	3	26	40	5	23	36	5	24	39	6	31
Child restraint used	0	0	0	0	0	0	0	0	0	1	0	0	0	0	0
Child restraint not used, unavailable or improper use	0	0	0	0	0	0	0	0	0	0	0	0	0	0	0
Restraint failure	0	0	0	2	0	0	0	0	0	1	0	1	0	0	0
Restraint use unknown	88	1	25	79	1	28	70	1	22	80	0	26	115	1	31
Helmet worn	16	3	11	16	3	11	11	3	8	18	2	13	12	1	10
Helmet not worn	14	4	9	10	0	10	11	0	11	11	3	7	18	1	14
Helmet use unknown	0	0	0	1	0	0	1	0	1	3	1	2	4	2	1
Uncoded & errors	2	0	0	2	0	0	1	0	0	3	0	2	2	0	0
Total	528	22	161	497	10	172	501	11	180	597	15	201	668	13	226

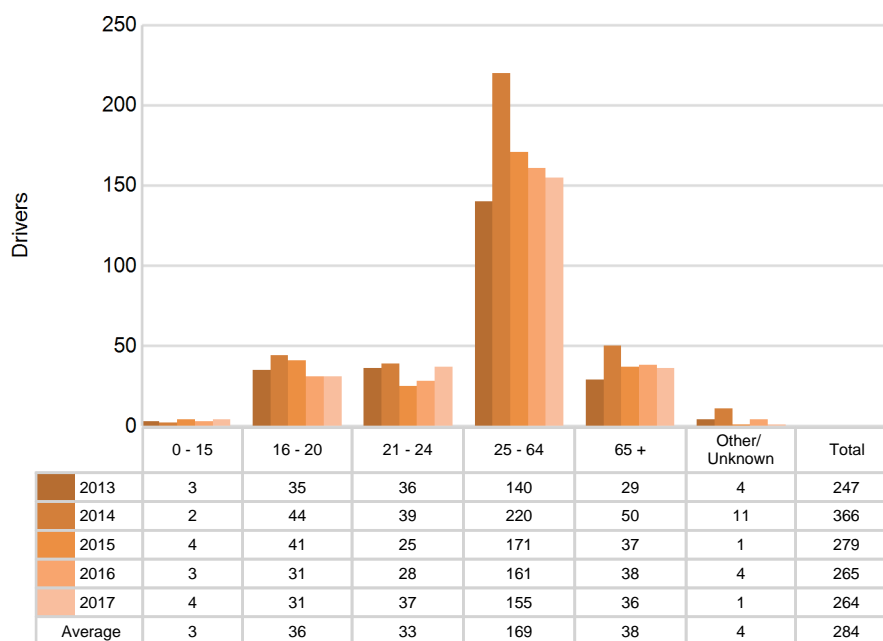
MSP District 7 - Northern Lower Peninsula (continued)

5-Year Trend - Seatbelt Not Used Among Drivers by Age

Age Group	2013			2014			2015			2016			2017		
	Drivers	Fatal Drivers	Injured Drivers	Drivers	Fatal Drivers	Injured Drivers	Drivers	Fatal Drivers	Injured Drivers	Drivers	Fatal Drivers	Injured Drivers	Drivers	Fatal Drivers	Injured Drivers
0 - 15	3	0	2	2	0	0	4	0	1	3	0	2	4	0	3
16 - 20	35	0	20	44	1	14	41	1	18	31	1	13	31	2	14
21 - 24	36	2	8	39	0	16	25	1	6	28	1	14	37	2	18
25 - 64	140	10	45	220	2	52	171	8	56	161	7	57	155	5	51
65 +	29	3	7	50	1	6	37	4	10	38	3	11	36	1	17
Unknown	4	0	0	11	0	0	1	0	0	4	0	1	1	0	0
Total	247	15	82	366	4	88	279	14	91	265	12	98	264	10	103

Note: Seatbelt Not Used includes no belts available or no belts used.

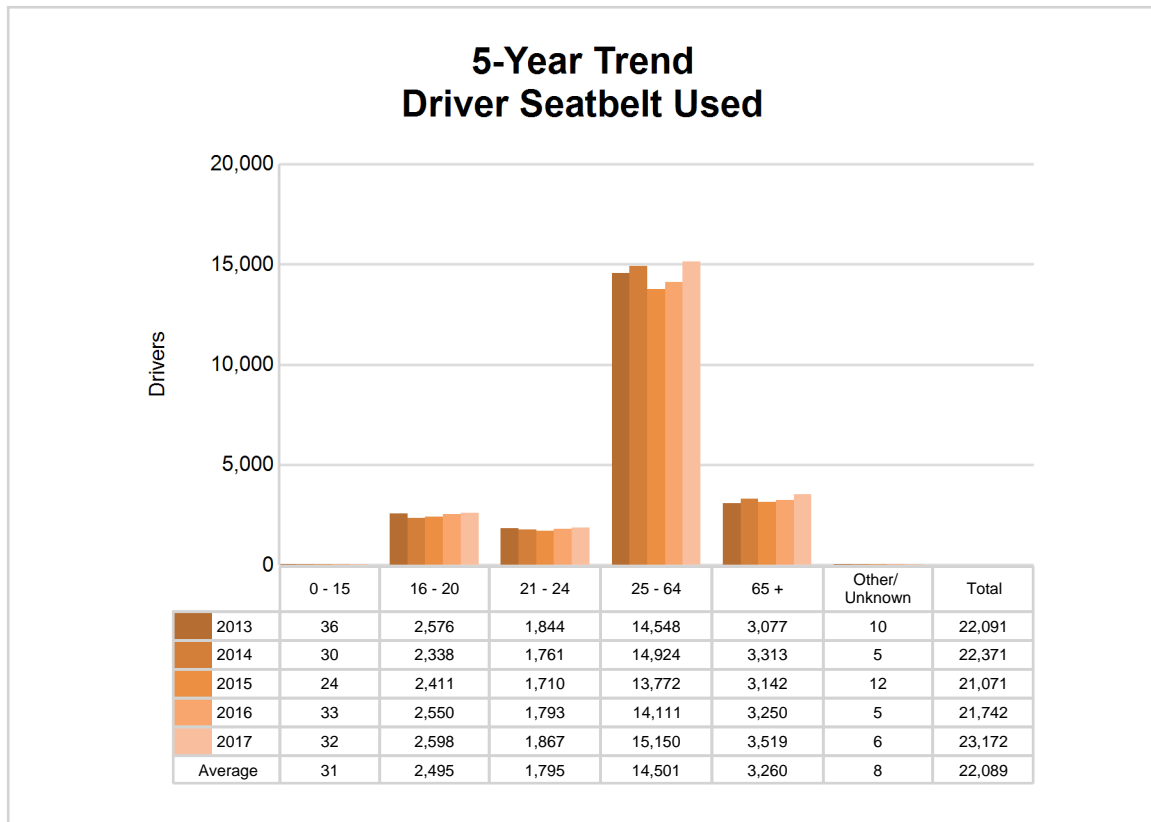
5-Year Trend Driver Seatbelt Not Used



5-Year Trend - Seatbelt Used Among Drivers by Age

Age Group	2013			2014			2015			2016			2017		
	Drivers	Fatal Drivers	Injured Drivers	Drivers	Fatal Drivers	Injured Drivers	Drivers	Fatal Drivers	Injured Drivers	Drivers	Fatal Drivers	Injured Drivers	Drivers	Fatal Drivers	Injured Drivers
0 - 15	36	1	4	30	0	4	24	0	5	33	0	6	32	0	1
16 - 20	2,576	4	242	2,338	2	206	2,411	3	264	2,550	4	267	2,598	2	301
21 - 24	1,844	1	174	1,761	3	156	1,710	0	166	1,793	2	164	1,867	1	192
25 - 64	14,548	11	1,116	14,924	9	1,050	13,772	7	1,022	14,111	7	1,166	15,150	11	1,236
65 +	3,077	7	303	3,313	3	301	3,142	4	299	3,250	13	295	3,519	7	325
Unknown	10	0	1	5	0	1	12	0	1	5	0	0	6	0	1
Total	22,091	24	1,840	22,371	17	1,718	21,071	14	1,757	21,742	26	1,898	23,172	21	2,056

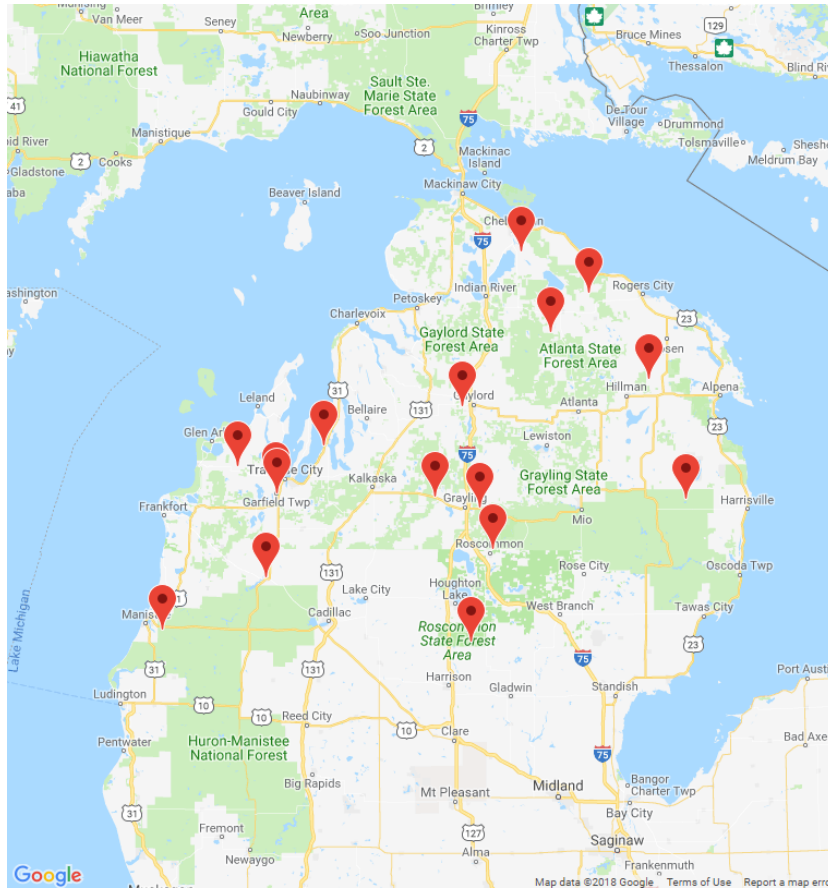
Note: Seatbelt Used includes shoulder belt only used, lap belt only used, both lap and shoulder belts used, and restraint failure.



MSP District 7 - Northern Lower Peninsula (continued)

5-Year Trend - Drivers in Crashes by Hazardous Action

Hazardous Action	2013		2014		2015		2016		2017	
	Total Drivers in Crashes	Drivers in Fatal Crashes	Total Drivers in Crashes	Drivers in Fatal Crashes	Total Drivers in Crashes	Drivers in Fatal Crashes	Total Drivers in Crashes	Drivers in Fatal Crashes	Total Drivers in Crashes	Drivers in Fatal Crashes
None	13,842	38	14,277	28	13,690	28	13,650	42	15,007	31
Speed too fast	3,188	26	3,050	20	2,272	23	2,693	23	2,797	14
Speed too slow	29	0	29	0	27	0	21	0	20	0
Failed to yield	1,596	5	1,843	4	1,723	4	1,776	9	1,788	5
Disregard traffic control	252	10	266	2	249	0	248	5	237	2
Drove wrong way	14	0	12	0	10	0	14	0	8	1
Drove left of center	142	1	149	5	124	8	165	6	172	6
Improper passing	77	0	103	1	106	0	102	0	92	0
Improper lane use	238	0	221	2	242	0	272	3	279	0
Improper turn	120	0	154	0	130	0	154	1	148	0
Improper/no signal	40	0	52	0	31	0	21	0	15	0
Improper backing	338	0	385	0	358	0	345	0	338	0
Unable to stop in assured clear distance	2,083	0	2,011	1	2,080	3	2,074	1	2,046	3
Other	584	3	696	2	694	5	723	5	686	2
Unknown	377	8	348	2	358	5	550	12	648	9
Reckless driving	82	2	58	2	104	2	85	1	76	3
Careless/negligent driving	588	4	499	1	535	5	572	4	603	1
Uncoded & errors	248	0	99	0	107	0	126	3	152	0
Total	23,838	97	24,252	70	22,840	83	23,591	115	25,112	77



The picture above represents all 2017 alcohol-involved fatal crashes in District 7.

In 2017, there were 674 alcohol-involved crashes in District 7:

- | | |
|-----|--|
| 16 | K - Fatal Crashes |
| 79 | A - Suspected Serious Injury Crashes |
| 133 | B - Suspected Minor Injury Crashes |
| 71 | C - Possible Injury Crashes |
| 375 | O - Property Damage Only/No Injury Crashes |

Office of Highway Safety Planning

Physical Address:

7150 Harris Drive
Dimondale, Michigan 48821

Mailing Address:

P.O. Box 30634
Lansing, Michigan 48909

Phone: (517) 284-3112

Fax: (517) 284-3151

Find us on the web:

MichiganTrafficCrashFacts.org

