



2017

**MTCF**  
Michigan Traffic  
Crash Facts

# Michigan Traffic Crash Facts

## Reporting Criteria

Please pay particular attention to the wording when interpreting the three levels of data gathered for this report.

### Crash

The Crash Level analyzes data related to crash events and returns one result per crash.

Examples: Time, weather, and location.

### Units

The Units Level analyzes the experience of the units in the crash and returns one result per vehicle, driver, pedestrian, bicyclist, or train.

Examples: Vehicle type, driver condition, and unit events.

### People

The People Level analyzes the experience of the people involved in the crash and returns one result per occupant/person/party.

Examples: Age, injury severity, and seat belt or helmet use.

### **KABCO Injury Indicator:**

K = Killed

A = Suspected Serious Injury

B = Suspected Minor Injury

C = Possible Injury

O = No Injury

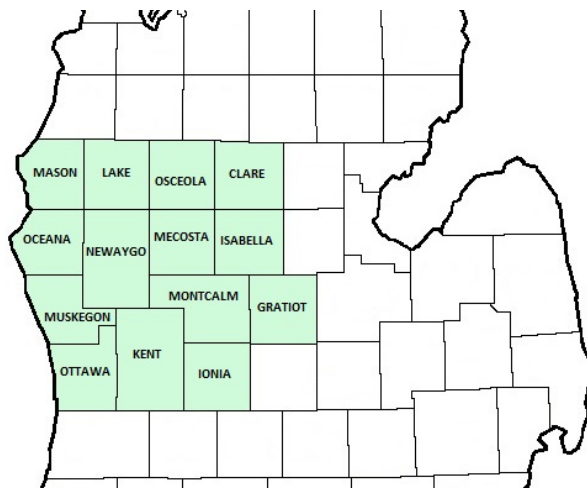
Property Damage Only (PDO)



## Michigan State Police (MSP) District 6 - West

### 2017 Traffic Crash Data & 2013-2017 5-Year Trends

Beginning in 2011, District 6 is comprised of Clare, Gratiot, Ionia, Isabella, Kent, Lake, Mason, Mecosta, Montcalm, Muskegon, Newaygo, Oceana, Osceola, and Ottawa counties. Trend tables for this report are based on those counties.



### Sources:

The crashes in this report occurred on public roadways in Michigan and resulted in injuries, fatalities, or property damage (with \$1,000 as a reporting threshold). The information was gathered from Michigan Traffic Crash Report Forms (UD-10) submitted by local police departments, sheriff's offices, and the Michigan State Police. Other related information was obtained from the departments of Transportation, State, and Community Health.

This page left intentionally blank

## MSP District 6 - West

- There were 52,888 crashes in District 6 during 2017. [Page 1]
- A total of 190 fatalities resulted from 176 fatal crashes in 2017 in District 6. [Page 1]
- There were 11,706 injuries and 8,568 injury crashes. [Page 1]
- There were 44,144 property damage only crashes (no fatalities or injuries). [Page 1]
- December had the highest number of crashes (6,983). [Pages 1-2]
- November and September had the highest number of fatal crashes (20) while November had the highest number of fatalities (22). [Pages 1-2]
- December had the highest number of injury crashes (911) and injuries (1,190). [Page 1]
- December had the highest number of property damage only crashes (6,061). [Page 1]
- Of all vehicles involved in fatal crashes, 23 (7.9%) were motorcycles. [Page 1]
- Friday was the day of the week with the highest number of crashes (8,971) and Thursday had the highest number of fatal crashes (32). [Pages 2-3]
- The 3:00 PM - 5:59 PM time period had the highest number of crashes (11,406). This holds true for every year between 2013 and 2017. The 3:00 PM - 5:59 PM time period had the highest number of fatal crashes (34). [Pages 5-6]
- During the period from 2013 to 2017, the highest number of deer crashes occurred in 2017 (11,289). The 6:00 AM - 8:59 AM time period had the highest number of deer-involved crashes. There were 3 fatal crashes involving deer in 2017. [Pages 7-8]
- Kent County (42.9%) had the highest number of crashes in District 6 in 2017, followed by Ottawa County (15.2%), and Muskegon County (9.5%). [Page 8]
- Kent County (36.3%) had the highest number of fatalities in District 6 in 2017, followed by Montcalm County (12.1%), and Muskegon County and Ottawa County (8.9%). [Page 8]
- The highest number of drivers in crashes (86,228) occurred during 2017 and the highest number of drivers coded drinking in crashes (1,919) occurred during 2017 within the five year period between 2013 and 2017. [Page 9]
- A total of 1,959 crashes involved alcohol in 2017. [Page 10]
- Alcohol-involved fatal crashes were the highest in 2017 during the five-year period from 2013 to 2017 at 60. [Page 10]
- A total of 450 crashes, 43 fatal crashes, and 55 suspected serious injury crashes involved drugs in 2017, all the highest during the five-year period. [Page 11]
- There were 75,505 drivers wearing seatbelts and 645 drivers not wearing seatbelts in crashes in 2017. Of the 645 drivers not wearing seat belts, 25 (3.9%) were killed and 226 (35.0%) were injured. [Pages 14-16]
- The most common hazardous action coded for drivers in 2017 in all crashes was unable to stop in assured clear distance (10,944), while the most common hazardous action coded for drivers in fatal crashes was speed too fast (29). [Page 17]

## MSP District 6 - West (continued)

### District 6 Experience

In 2017:

There were 86,228 drivers involved in 52,888 motor vehicle crashes in MSP District 6. Of those crashes, 176 were classified as fatal, resulting in 190 fatalities. An additional 11,706 persons were injured.

District 6 experienced the highest number of motor vehicle crashes (6,983) in December, the highest number of fatal crashes (20) in September and November, and the highest number of persons killed (22) in November.

Michigan driver statistics indicate 6.9 percent of licensed drivers in District 6 were age 16-20, and 12.1 percent of drivers in crashes were also in that age group.

### 2017 - Crashes and Injuries by Month

Month	Crashes				Persons	
	Total	Fatal	Injury	Property Damage Only (PDO)	Fatalities	Injuries
January	4,813	10	698	4,105	11	908
February	3,410	12	541	2,857	13	739
March	3,904	16	626	3,262	18	863
April	3,349	12	597	2,740	12	879
May	3,990	12	748	3,230	13	1,026
June	4,206	16	777	3,413	17	1,068
July	3,770	12	748	3,010	13	988
August	3,692	18	695	2,979	18	994
September	3,993	20	781	3,192	21	1,075
October	5,582	17	833	4,732	20	1,125
November	5,196	20	613	4,563	22	851
December	6,983	11	911	6,061	12	1,190
<b>Total</b>	<b>52,888</b>	<b>176</b>	<b>8,568</b>	<b>44,144</b>	<b>190</b>	<b>11,706</b>

### 2017 - Driver Statistics

Age Group	District 6			Driver Rates	
	2017 Population	Licensed Drivers	Drivers in Crashes	Per 10k Population	Per 10k Licensed
0 - 15	319,194	8,476	144	4.5	169.9
16 - 20	116,607	75,906	10,441	895.4	1,375.5
21 - 24	96,646	74,493	9,159	947.7	1,229.5
25 - 64	793,248	724,228	51,783	652.8	715.0
65 +	235,971	213,642	7,963	337.5	372.7
Unknown	0	0	6,738	--	--
<b>Total</b>	<b>1,561,666</b>	<b>1,096,745</b>	<b>86,228</b>	<b>552.2</b>	<b>786.2</b>

### 2017 - Vehicles in Crashes

Vehicle Type	Motor Vehicles		Fatal Crashes		Injury Crashes	PDO Crashes
	Number of Vehicles	% of Total	Number	% of Total	Number	Number
Passenger car, SUV, van	70,359	81.6	201	69.3	12,603	57,555
Motor home	338	0.4	2	0.7	57	279
Pickup truck	10,095	11.7	36	12.4	1,704	8,355
Small truck under 10,000 lbs. GVWR	613	0.7	1	0.3	94	518
Motorcycle	499	0.6	23	7.9	361	115
Moped / goped	89	0.1	2	0.7	77	10
Go-cart / golf cart	3	0.0	0	0.0	1	2
Snowmobile	12	0.0	0	0.0	4	8
Off-Road Vehicle - ORV / All-Terrain Vehicle - ATV	56	0.1	2	0.7	37	17
Other	349	0.4	0	0.0	46	303
Truck/bus over 10,000 lbs.	2,003	2.3	23	7.9	360	1,620
Unknown	1,812	2.1	0	0.0	104	1,708
<b>Total</b>	<b>86,228</b>	<b>100.0</b>	<b>290</b>	<b>100.0</b>	<b>15,448</b>	<b>70,490</b>

## 5-Year Trend - Crashes by Month

Month	2013		2014		2015		2016		2017	
	Total Crashes	Fatal Crashes	Total Crashes	Fatal Crashes	Total Crashes	Fatal Crashes	Total Crashes	Fatal Crashes	Total Crashes	Fatal Crashes
January	4,852	11	6,393	2	5,049	14	4,968	8	4,813	10
February	4,935	4	5,108	12	4,572	5	3,944	10	3,410	12
March	3,421	5	3,771	11	3,247	6	3,767	6	3,904	16
April	2,952	4	2,605	9	2,890	6	3,421	12	3,349	12
May	3,478	18	3,328	13	3,656	16	3,994	11	3,990	12
June	3,261	8	3,443	10	3,664	13	3,948	14	4,206	16
July	3,259	16	3,130	22	3,600	12	3,613	14	3,770	12
August	3,148	15	3,219	16	3,236	28	3,923	14	3,692	18
September	3,446	7	3,404	14	3,603	13	4,155	18	3,993	20
October	4,495	22	4,655	12	4,982	13	5,019	14	5,582	17
November	5,604	8	6,478	8	5,101	15	5,477	14	5,196	20
December	5,260	8	3,771	8	4,201	12	6,145	9	6,983	11
<b>Total</b>	<b>48,111</b>	<b>126</b>	<b>49,305</b>	<b>137</b>	<b>47,801</b>	<b>153</b>	<b>52,374</b>	<b>144</b>	<b>52,888</b>	<b>176</b>

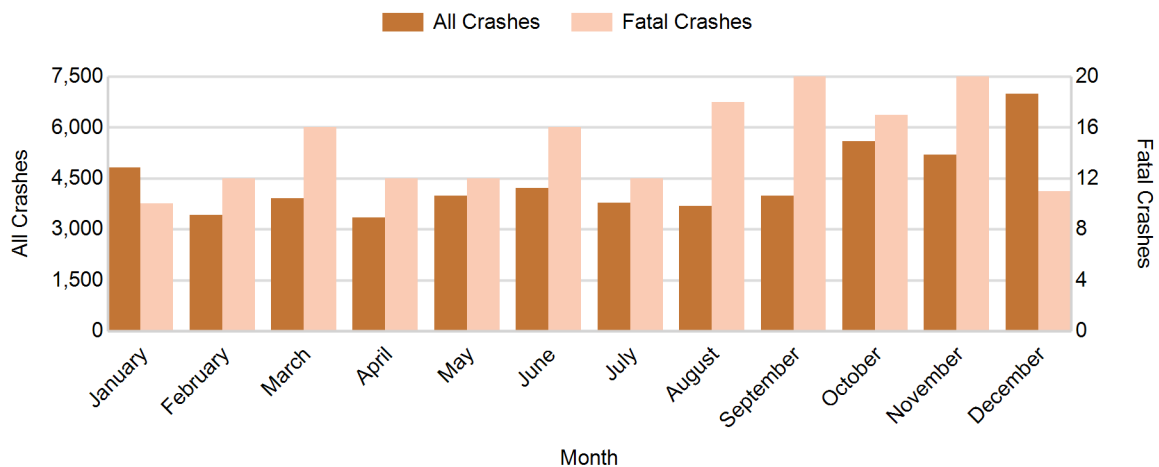
Note: † Indicates that the highest number of total crashes reported in the 5-year period occurred in the same month

## 5-Year Trend - Crashes by Day of Week

Day	2013		2014		2015		2016		2017	
	Total Crashes	Fatal Crashes	Total Crashes	Fatal Crashes	Total Crashes	Fatal Crashes	Total Crashes	Fatal Crashes	Total Crashes	Fatal Crashes
Monday	7,114	15	6,984	15	6,975	20	7,314	23	7,587	16
Tuesday	7,604	22	7,337	12	7,111	17	7,820	20	7,762	21
Wednesday	7,001	15	7,873	18	7,357	21	8,165	18	7,989	31
Thursday	7,571	18	7,840	20	7,236	18	8,207	21	8,174	32
Friday	7,741 †	19	8,331 †	21	7,794 †	23	8,916 †	22	8,971 †	25
Saturday	6,240	18	6,032	24	6,446	26	6,633	23	7,013	30
Sunday	4,840	19	4,908	27	4,882	28	5,319	17	5,392	21
<b>Total</b>	<b>48,111</b>	<b>126</b>	<b>49,305</b>	<b>137</b>	<b>47,801</b>	<b>153</b>	<b>52,374</b>	<b>144</b>	<b>52,888</b>	<b>176</b>

Note: † Indicates that the highest number of total crashes reported in the 5-year period occurred on the same day of the week

## 2017 Crashes by Month

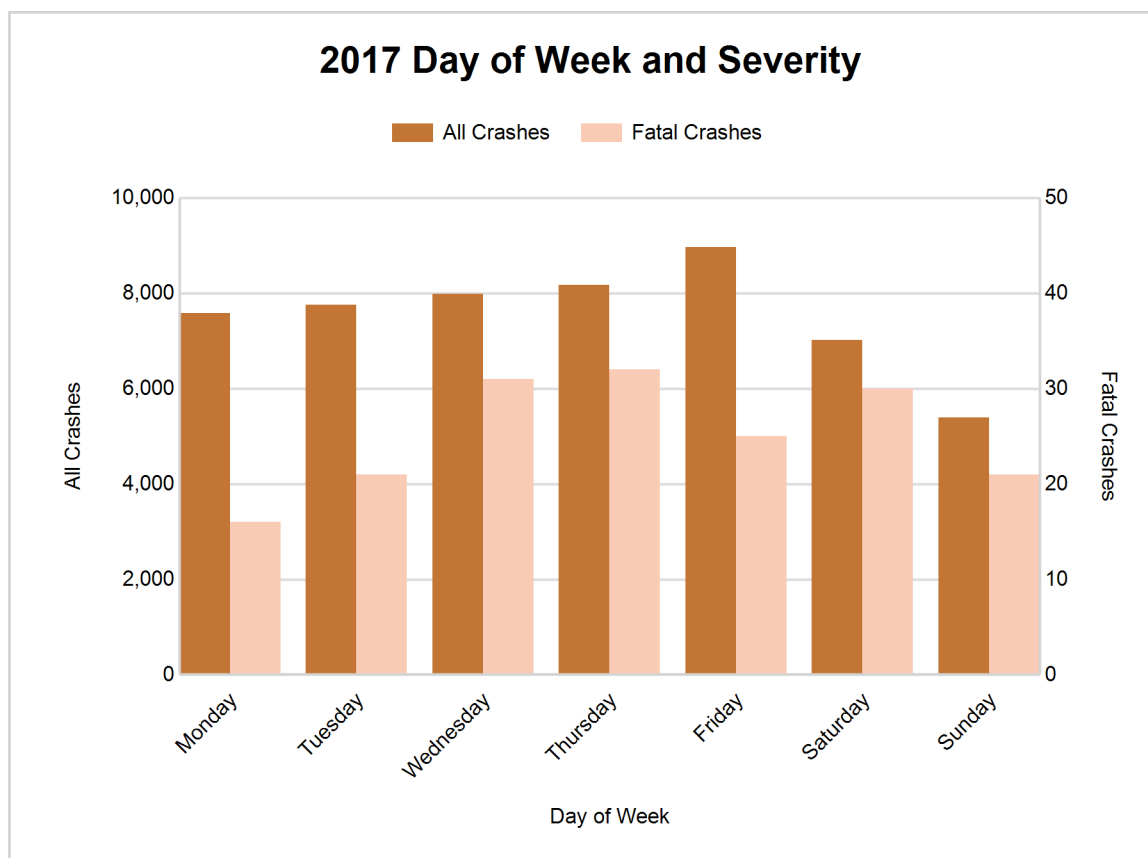


## MSP District 6 - West (continued)

## 2017 - Crashes by Day of Week

Day	All Crashes		Fatal Crashes		Injury Crashes			PDO Crashes
	Number	% of Total	Number	% of Fatal	A	B	C	Number
Monday	7,587	14.3	16	9.1	111	334	814	6,312
Tuesday	7,762	14.7	21	11.9	125	346	793	6,477
Wednesday	7,989	15.1	31	17.6	120	299	753	6,786
Thursday	8,174	15.5	32	18.2	137	357	829	6,819
Friday	8,971	17.0	25	14.2	151	425	900	7,470
Saturday	7,013	13.3	30	17.0	164	343	657	5,819
Sunday	5,392	10.2	21	11.9	146	300	464	4,461
<b>Total</b>	<b>52,888</b>	<b>100.0</b>	<b>176</b>	<b>100.0</b>	<b>954</b>	<b>2,404</b>	<b>5,210</b>	<b>44,144</b>

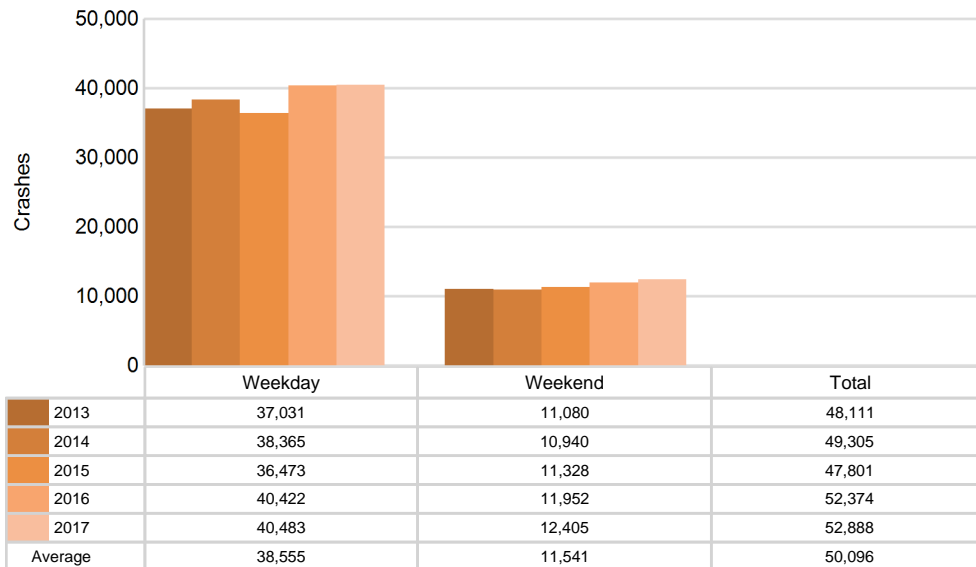
## 2017 Day of Week and Severity



## 5-Year Trend - Crashes by Weekday and Weekend

Portion of Week	2013		2014		2015		2016		2017	
	Total Crashes	Fatal Crashes	Total Crashes	Fatal Crashes	Total Crashes	Fatal Crashes	Total Crashes	Fatal Crashes	Total Crashes	Fatal Crashes
Weekday	37,031	89	38,365	86	36,473	99	40,422	104	40,483	125
Weekend	11,080	37	10,940	51	11,328	54	11,952	40	12,405	51
<b>Total</b>	<b>48,111</b>	<b>126</b>	<b>49,305</b>	<b>137</b>	<b>47,801</b>	<b>153</b>	<b>52,374</b>	<b>144</b>	<b>52,888</b>	<b>176</b>

## 5-Year Crash Trends by Weekday (Monday - Friday) and Weekend (Saturday & Sunday)

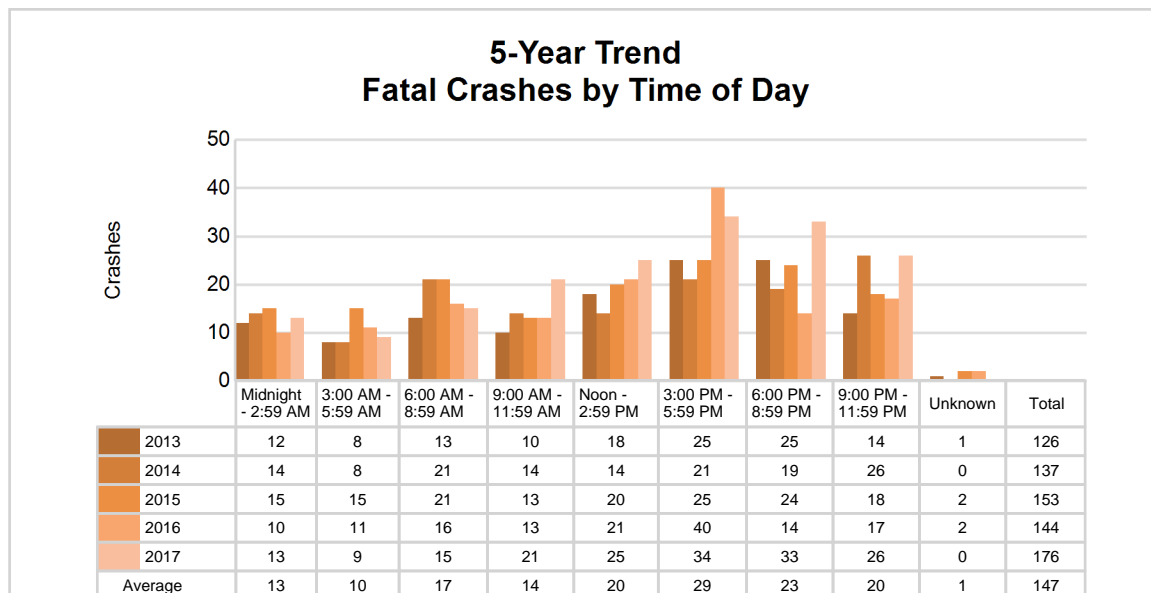
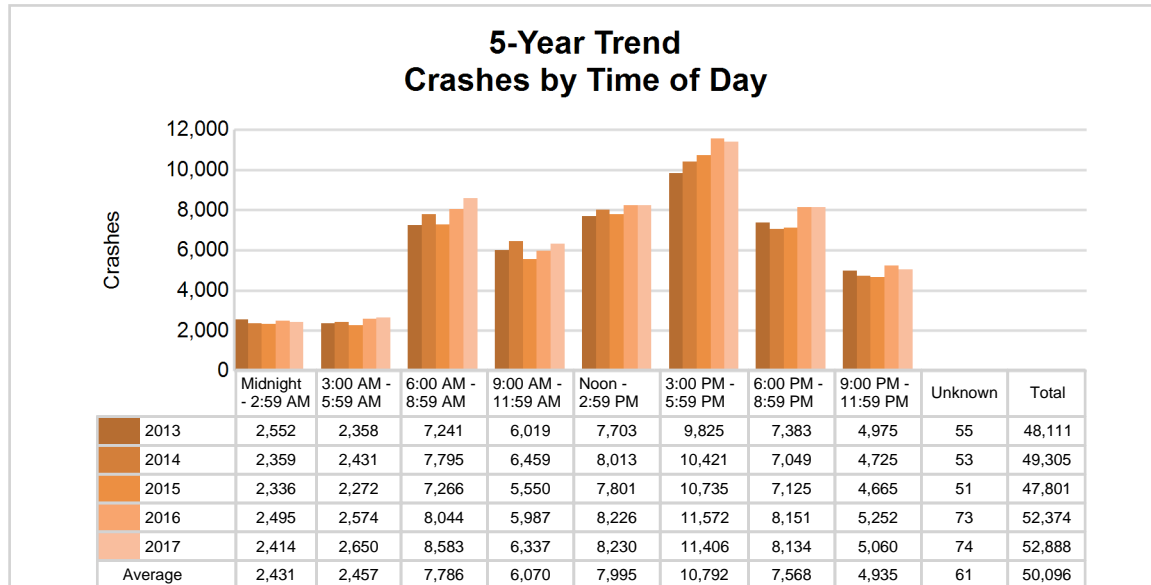


# MSP District 6 - West (continued)

## 5-Year Trend - Crashes by Time of Day

Time of Day	2013		2014		2015		2016		2017	
	Total Crashes	Fatal Crashes	Total Crashes	Fatal Crashes	Total Crashes	Fatal Crashes	Total Crashes	Fatal Crashes	Total Crashes	Fatal Crashes
Midnight - 2:59 AM	2,552	12	2,359	14	2,336	15	2,495	10	2,414	13
3:00 AM - 5:59 AM	2,358	8	2,431	8	2,272	15	2,574	11	2,650	9
6:00 AM - 8:59 AM	7,241	13	7,795	21	7,266	21	8,044	16	8,583	15
9:00 AM - 11:59 AM	6,019	10	6,459	14	5,550	13	5,987	13	6,337	21
Noon - 2:59 PM	7,703	18	8,013	14	7,801	20	8,226	21	8,230	25
3:00 PM - 5:59 PM	9,825 †	25	10,421 †	21	10,735 †	25	11,572 †	40	11,406 †	34
6:00 PM - 8:59 PM	7,383	25	7,049	19	7,125	24	8,151	14	8,134	33
9:00 PM - 11:59 PM	4,975	14	4,725	26	4,665	18	5,252	17	5,060	26
Unknown	55	1	53	0	51	2	73	2	74	0
<b>Total</b>	<b>48,111</b>	<b>126</b>	<b>49,305</b>	<b>137</b>	<b>47,801</b>	<b>153</b>	<b>52,374</b>	<b>144</b>	<b>52,888</b>	<b>176</b>

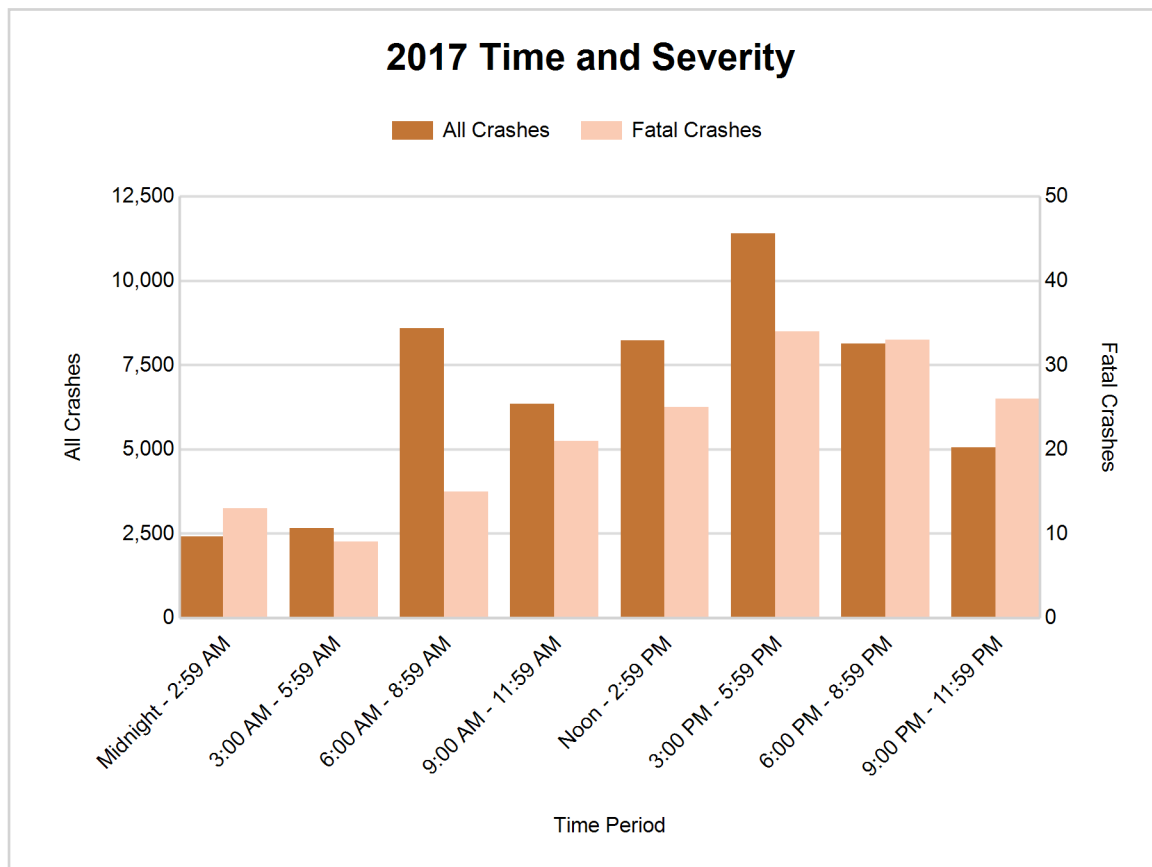
Note: † Indicates that the highest number of total crashes reported in the 5-year period occurred in the same time period





## 2017 - Time and Severity

Time of Day	All Crashes		Fatal Crashes		Injury Crashes			PDO Crashes
	Number	% of Total	Number	% of Fatal	A	B	C	Number
Midnight - 2:59 AM	2,414	4.6	13	7.4	66	122	182	2,031
3:00 AM - 5:59 AM	2,650	5.0	9	5.1	47	93	152	2,349
6:00 AM - 8:59 AM	8,583	16.2	15	8.5	103	287	686	7,492
9:00 AM - 11:59 AM	6,337	12.0	21	11.9	121	290	671	5,234
Noon - 2:59 PM	8,230	15.6	25	14.2	127	452	1,008	6,618
3:00 PM - 5:59 PM	11,406	21.6	34	19.3	227	553	1,414	9,178
6:00 PM - 8:59 PM	8,134	15.4	33	18.8	148	357	693	6,903
9:00 PM - 11:59 PM	5,060	9.6	26	14.8	115	248	404	4,267
Unknown	74	0.1	0	0.0	0	2	0	72
<b>Total</b>	<b>52,888</b>	<b>100.0</b>	<b>176</b>	<b>100.0</b>	<b>954</b>	<b>2,404</b>	<b>5,210</b>	<b>44,144</b>

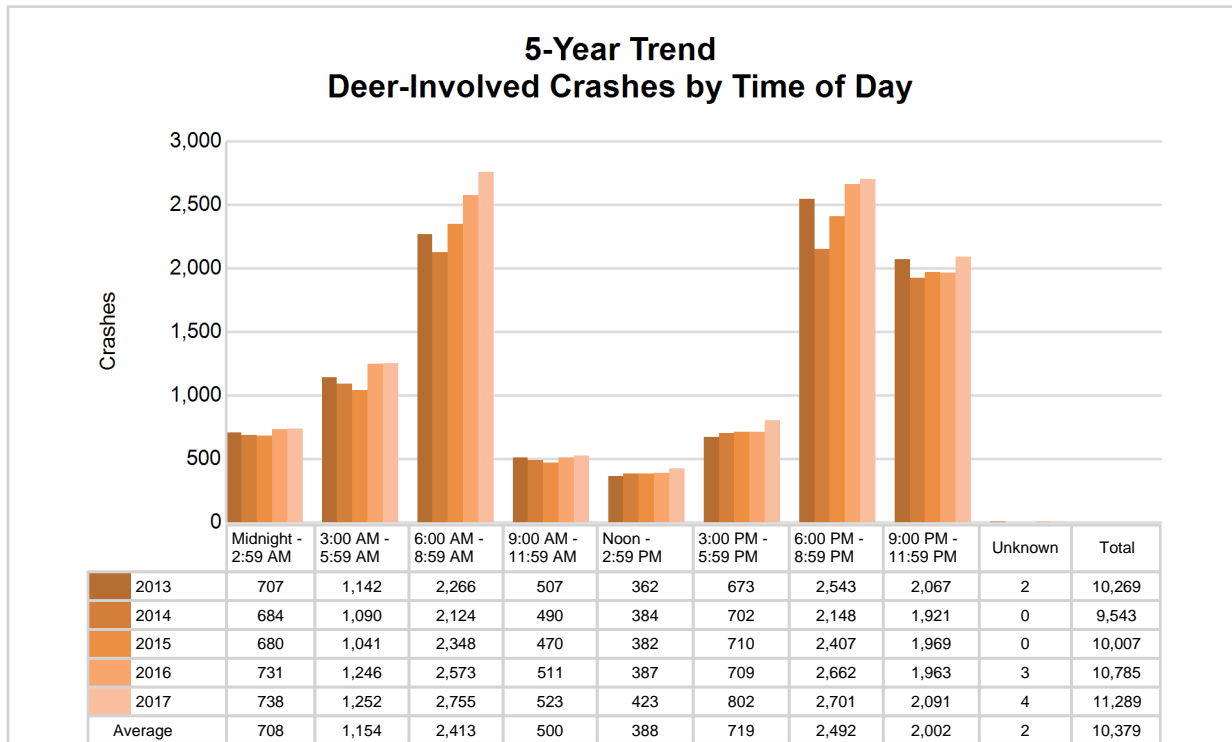


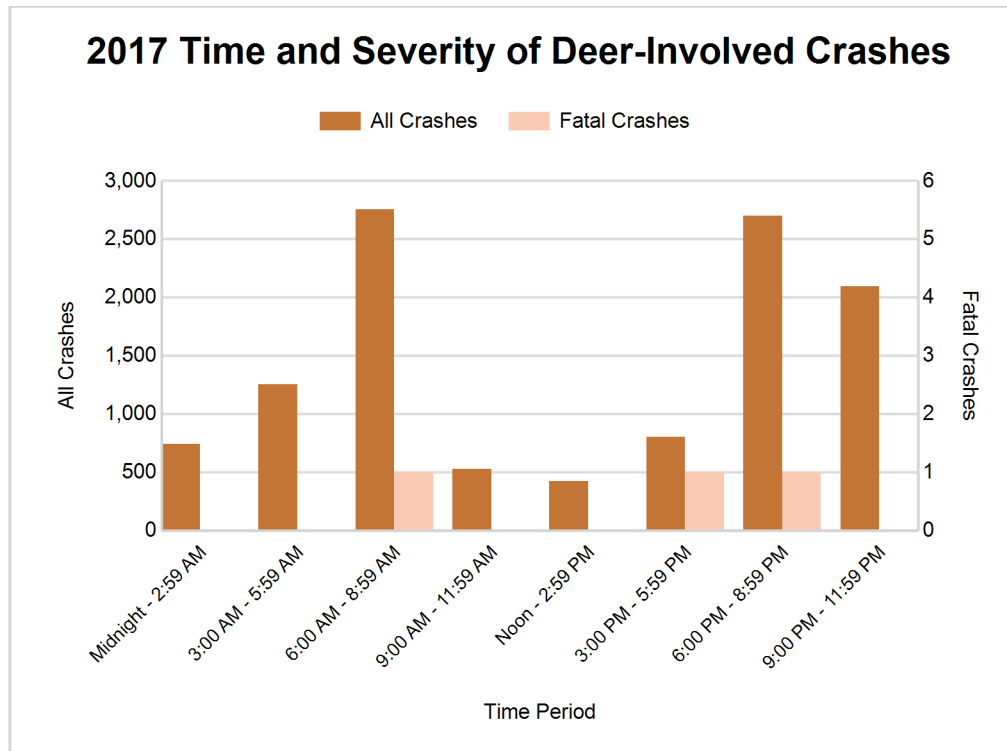
## MSP District 6 - West (continued)

### 5-Year Trend - Deer-Involved Crashes by Time of Day

Time of Day	2013		2014		2015		2016		2017	
	Total Crashes	Fatal Crashes	Total Crashes	Fatal Crashes	Total Crashes	Fatal Crashes	Total Crashes	Fatal Crashes	Total Crashes	Fatal Crashes
Midnight - 2:59 AM	707	1	684	0	680	0	731	0	738	0
3:00 AM - 5:59 AM	1,142	0	1,090	0	1,041	0	1,246	0	1,252	0
6:00 AM - 8:59 AM	2,266	1	2,124	0	2,348	1	2,573	0	2,755	1
9:00 AM - 11:59 AM	507	0	490	0	470	0	511	0	523	0
Noon - 2:59 PM	362	0	384	0	382	0	387	1	423	0
3:00 PM - 5:59 PM	673	0	702	1	710	0	709	2	802	1
6:00 PM - 8:59 PM	2,543	1	2,148	0	2,407	0	2,662	0	2,701	1
9:00 PM - 11:59 PM	2,067	1	1,921	1	1,969	0	1,963	0	2,091	0
Unknown	2	0	0	0	0	0	3	0	4	0
<b>Total</b>	<b>10,269</b>	<b>4</b>	<b>9,543</b>	<b>2</b>	<b>10,007</b>	<b>1</b>	<b>10,785</b>	<b>3</b>	<b>11,289</b>	<b>3</b>

Note: † Indicates that the highest number of total crashes reported in the 5-year period occurred in the same time period





#### 2017 - Reported Motor Vehicle Crashes by County

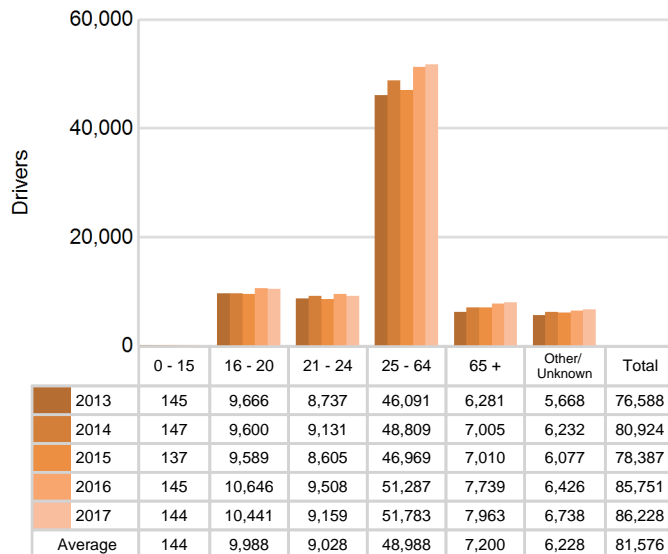
County	Crashes											Persons	
	Total	Fatal	Injury	Property Damage	Inter-state	US Route	State Route	Local Street	Alcohol-Involved	Drug-Involved	Deer-Involved	Fatalities	Injuries
Clare	1,144	2	159	983	0	372	212	558	35	10	555	3	224
Gratiot	1,585	5	166	1,414	0	395	267	922	47	13	908	5	236
Ionia	1,749	10	292	1,447	401	0	522	823	76	14	471	10	392
Isabella	2,812	11	379	2,422	0	626	402	1,771	87	22	1,057	12	542
Kent	22,712	65	4,092	18,555	2,911	2,375	4,680	12,719	885	173	1,572	69	5,442
Lake	477	1	68	408	0	97	83	292	22	0	276	1	84
Mason	1,434	8	152	1,274	0	569	38	825	42	26	741	9	204
Mecosta	1,942	4	182	1,756	0	286	712	944	61	9	902	4	246
Montcalm	2,222	19	340	1,863	0	142	792	1,286	80	24	1,075	23	495
Muskegon	5,012	16	880	4,116	95	1,060	637	3,213	163	56	636	17	1,273
Newaygo	1,523	12	229	1,282	0	0	491	1,030	71	18	716	12	323
Oceana	1,058	2	145	911	0	256	110	691	49	18	540	2	190
Osceola	1,166	4	117	1,045	0	383	161	621	37	8	718	6	164
Ottawa	8,052	17	1,367	6,668	972	961	773	5,342	304	59	1,122	17	1,891
<b>Total</b>	<b>52,888</b>	<b>176</b>	<b>8,568</b>	<b>44,144</b>	<b>4,379</b>	<b>7,522</b>	<b>9,880</b>	<b>31,037</b>	<b>1,959</b>	<b>450</b>	<b>11,289</b>	<b>190</b>	<b>11,706</b>

## MSP District 6 - West (continued)

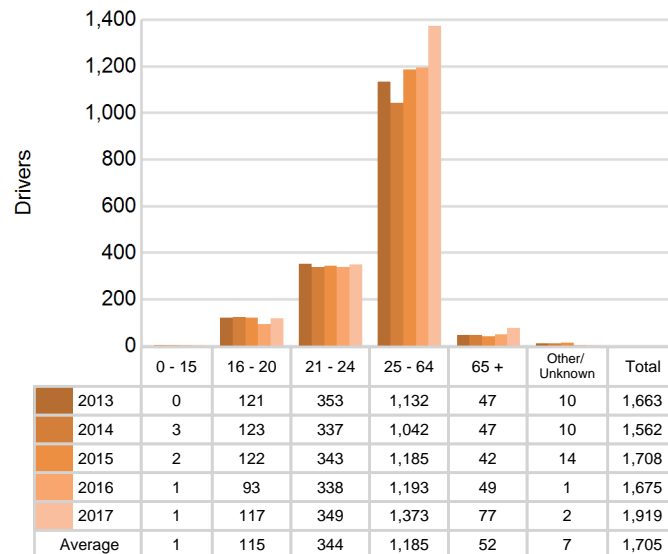
### 5-Year Trend - Drivers in Crashes Coded Drinking by Driver Age

Driver Age	2013		2014		2015		2016		2017	
	Total Drivers in Crashes	Total Drivers Coded Drinking	Total Drivers in Crashes	Total Drivers Coded Drinking	Total Drivers in Crashes	Total Drivers Coded Drinking	Total Drivers in Crashes	Total Drivers Coded Drinking	Total Drivers in Crashes	Total Drivers Coded Drinking
0 - 15	145	0	147	3	137	2	145	1	144	1
16 - 20	9,666	121	9,600	123	9,589	122	10,646	93	10,441	117
21 - 24	8,737	353	9,131	337	8,605	343	9,508	338	9,159	349
25 - 64	46,091	1,132	48,809	1,042	46,969	1,185	51,287	1,193	51,783	1,373
65 +	6,281	47	7,005	47	7,010	42	7,739	49	7,963	77
Unknown	5,668	10	6,232	10	6,077	14	6,426	1	6,738	2
<b>Total</b>	<b>76,588</b>	<b>1,663</b>	<b>80,924</b>	<b>1,562</b>	<b>78,387</b>	<b>1,708</b>	<b>85,751</b>	<b>1,675</b>	<b>86,228</b>	<b>1,919</b>

**5-Year Trend  
Total Drivers in Crashes by Age**



**5-Year Trend  
Total Drivers Coded Drinking by Age**



# MSP District 6 - West (continued)

10

## 2017 - Bodily Alcohol Concentration (BAC) Results Among All Vehicle Drivers in Alcohol-Involved Crashes by Age

Age Group	Drivers				BAC Result Range for Drivers Coded Drinking				
	Total Drivers in Alcohol-Involved Crashes	Total Drivers Tested in all Crashes	Total Drivers Coded Drinking, Tested	Total Drivers Coded Drinking	BAC = 0.00	BAC 0.01 g/dL to 0.07 g/dL	BAC 0.08 g/dL to 0.16 g/dL	BAC 0.17 g/dL and Above	BAC Not Reported
0 - 15	2	1	1	1	0	1	0	0	0
16 - 20	203	175	101	117	4	19	31	18	45
21 - 24	438	338	295	349	4	32	113	72	128
25 - 64	1,878	1,373	1,084	1,373	14	127	319	366	547
65 +	132	108	66	77	1	8	17	22	29
Unknown	231	0	0	2	0	0	0	0	2
<b>Total</b>	<b>2,884</b>	<b>1,995</b>	<b>1,547</b>	<b>1,919</b>	<b>23</b>	<b>187</b>	<b>480</b>	<b>478</b>	<b>751</b>

Notes: BAC measured in grams (g) per deciliter (dL).

BAC may not be reported if drivers are not tested or if the results are not available immediately (as in the case of a blood test).

A driver may be coded by the officer as drinking even though no test is administered.

## Alcohol-Involved Crashes

In 2017, there were 2,884 drivers in alcohol-involved crashes; 1,919 (66.5%) of those drivers were coded as had-been-drinking by the officer on the crash form.

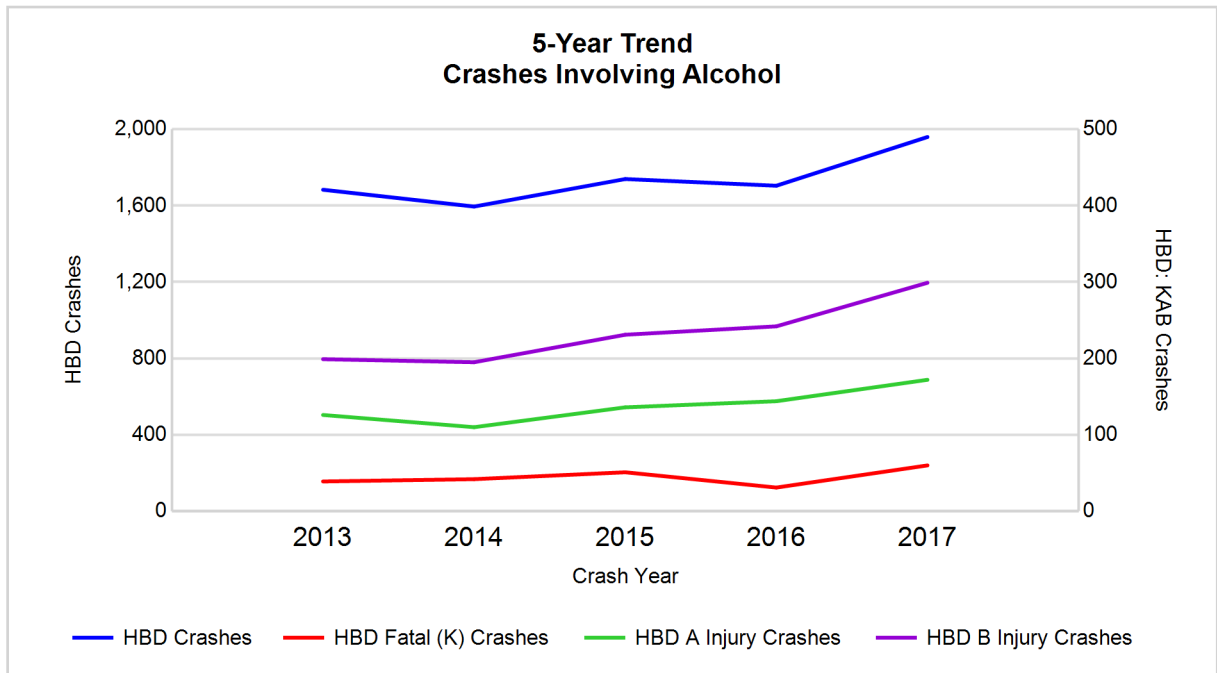
- 958 (49.9%) of the 1,919 drivers had a blood alcohol concentration (BAC) of 0.08 g/dL (grams per deciliter) or greater, and 478 (49.9%) of the 958 drivers had a BAC at or above 0.17 g/dL.
- 1,547 (80.6%) of the 1,919 drivers were coded as had-been-drinking and were tested for alcohol consumption.

## 5-Year Trend - Crashes Involving Alcohol

Year	All Crashes	HBD Crashes	% HBD	Fatal Crashes	HBD Fatal Crashes	% HBD	A Injury Crashes	HBD A Injury Crashes	% HBD	B Injury Crashes	HBD B Injury Crashes	% HBD
2013	48,111	1,683	3.5	126	39	31.0	712	126	17.7	2,009	199	9.9
2014	49,305	1,595	3.2	137	42	30.7	705	110	15.6	1,987	195	9.8
2015	47,801	1,739	3.6	153	51	33.3	720	136	18.9	1,960	231	11.8
2016	52,374	1,704	3.3	144	31	21.5	913	144	15.8	2,386	242	10.1
2017	52,888**	1,959**	3.7**	176**	60**	34.1**	954**	172**	18.0	2,404**	299**	12.4**

Note: \* Indicates that the most recent year is the lowest number or percentage reported in the 5-year period in that column

\*\* Indicates that the most recent year is the highest number or percentage reported in the 5-year period in that column



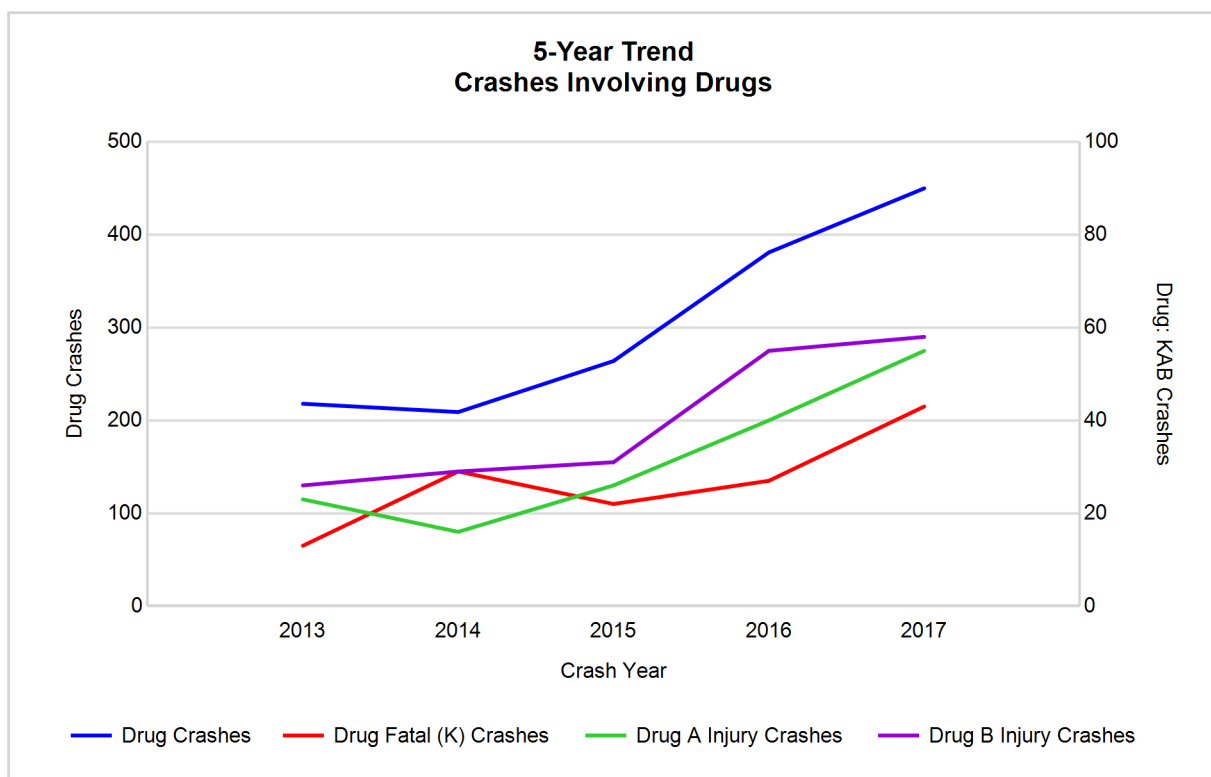
Note: Had-Been-Drinking (HBD)

## 5-Year Trend - Crashes Involving Drugs

Year	All Crashes	Drug Crashes	% Drug	Fatal Crashes	Drug Fatal Crashes	% Drug	A Injury Crashes	Drug A Injury Crashes	% Drug	B Injury Crashes	Drug B Injury Crashes	% Drug
2013	48,111	218	0.5	126	13	10.3	712	23	3.2	2,009	26	1.3
2014	49,305	209	0.4	137	29	21.2	705	16	2.3	1,987	29	1.5
2015	47,801	264	0.6	153	22	14.4	720	26	3.6	1,960	31	1.6
2016	52,374	381	0.7	144	27	18.8	913	40	4.4	2,386	55	2.3
2017	52,888**	450**	0.9**	176**	43**	24.4**	954**	55**	5.8**	2,404**	58**	2.4**

Note: \* Indicates that the most recent year is the lowest number or percentage reported in the 5-year period in that column

\*\* Indicates that the most recent year is the highest number or percentage reported in the 5-year period in that column

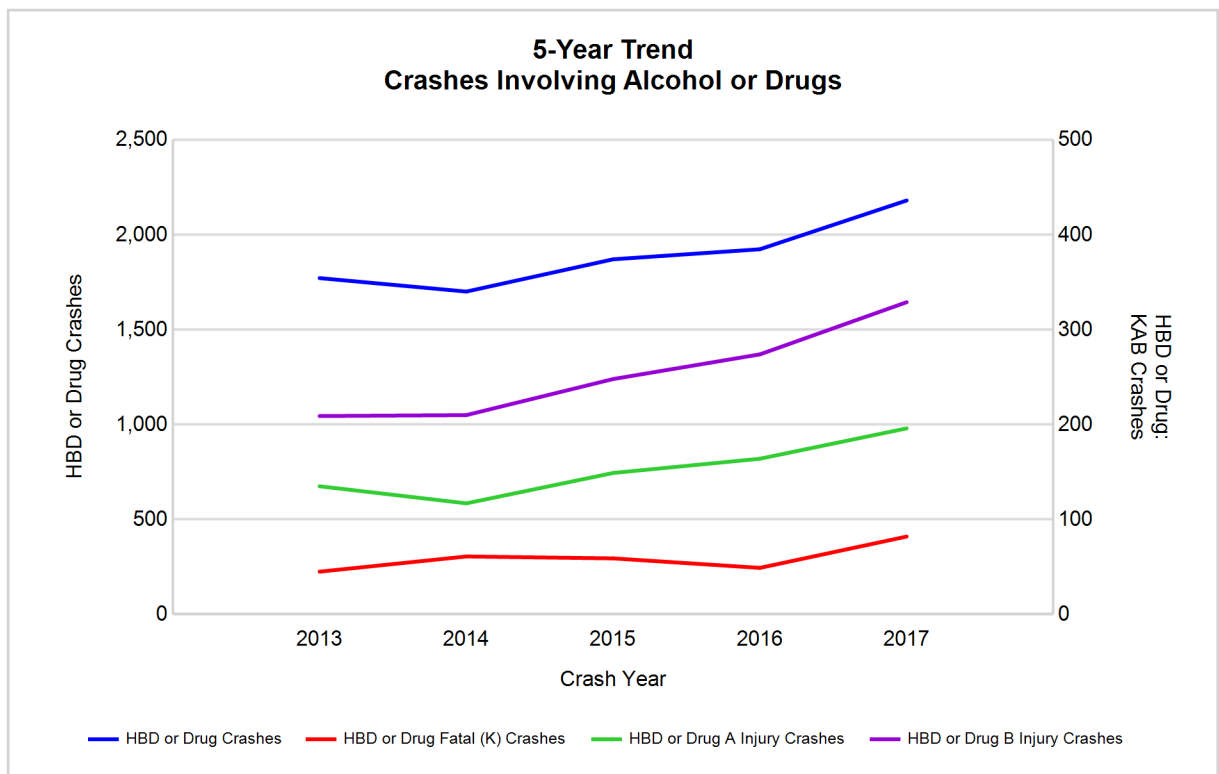


## 5-Year Trend - Crashes Involving Alcohol or Drugs

Year	All Crashes	HBD or Drug Crashes	% HBD or Drug	Fatal Crashes	HBD or Drug Fatal Crashes	% HBD or Drug	A Injury Crashes	HBD or Drug A Injury Crashes	% HBD or Drug	B Injury Crashes	HBD or Drug B Injury Crashes	% HBD or Drug
2013	48,111	1,772	3.7	126	45	35.7	712	135	19.0	2,009	209	10.4
2014	49,305	1,701	3.5	137	61	44.5	705	117	16.6	1,987	210	10.6
2015	47,801	1,871	3.9	153	59	38.6	720	149	20.7	1,960	248	12.7
2016	52,374	1,924	3.7	144	49	34.0	913	164	18.0	2,386	274	11.5
2017	52,888**	2,181**	4.1**	176**	82**	46.6**	954**	196**	20.5	2,404**	329**	13.7**

Note: \* Indicates that the most recent year is the lowest number or percentage reported in the 5-year period in that column

\*\* Indicates that the most recent year is the highest number or percentage reported in the 5-year period in that column



Note: Had-Been-Drinking (HBD)

## 2017 - Restraints Worn Among Vehicle Drivers and Injured Passengers by Vehicle Type

Vehicle Type	Total Occupants			Fatalities			A - Suspected Serious			B - Suspected Minor			C - Possible Injury			No Injury		
	Total	Used Restraint	%	Total	Used Restraint	%	Total	Used Restraint	%	Total	Used Restraint	%	Total	Used Restraint	%	Total	Used Restraint	%
Passenger car, SUV, van	72,795	65,516	90.0	114	72	63.2	766	626	81.7	2,244	2,042	91.0	6,239	5,971	95.7	59,183	56,799	96.0
Motor home	356	324	91.0	2	0	0.0	2	1	50.0	17	15	88.2	26	23	88.5	301	285	94.7
Pickup truck	10,367	9,464	91.3	13	4	30.8	114	76	66.7	346	309	89.3	630	598	94.9	8,773	8,477	96.6
Small truck under 10,000 lbs. GVWR	630	550	87.3	0	0	0.0	3	3	100.0	30	26	86.7	34	31	91.2	518	490	94.6
Motorcycle	541	347	64.1	24	15	62.5	128	64	50.0	158	109	69.0	95	70	73.7	126	89	70.6
Moped / goped	90	33	36.7	2	0	0.0	15	2	13.3	36	13	36.1	27	12	44.4	9	6	66.7
Go-cart / golf cart	3	2	66.7	0	0	0.0	0	0	0.0	0	0	0.0	0	0	0.0	2	2	100.0
Snowmobile	12	9	75.0	0	0	0.0	3	3	100.0	0	0	0.0	1	1	100.0	8	5	62.5
Off-Road Vehicle - ORV / All-Terrain Vehicle - ATV	66	28	42.4	2	0	0.0	17	5	29.4	14	4	28.6	11	7	63.6	22	12	54.5
Other	352	216	61.4	0	0	0.0	3	1	33.3	3	0	0.0	18	7	38.9	271	208	76.8
Truck/bus over 10,000 lbs.	2,091	1,887	90.2	4	2	50.0	16	7	43.8	30	19	63.3	118	58	49.2	1,865	1,801	96.6
Unknown	1,813	1	0.1	0	0	0.0	0	0	0.0	0	0	0.0	1	1	100.0	26	0	0.0
<b>Total</b>	<b>89,116</b>	<b>78,377</b>	<b>87.9</b>	<b>161</b>	<b>93</b>	<b>57.8</b>	<b>1,067</b>	<b>788</b>	<b>73.9</b>	<b>2,878</b>	<b>2,537</b>	<b>88.2</b>	<b>7,200</b>	<b>6,779</b>	<b>94.2</b>	<b>71,104</b>	<b>68,174</b>	<b>95.9</b>

Note: Restraint Use includes shoulder belt only used, lap belt only used, both lap and shoulder belts used, child restraint used, restraint failure, and helmet worn.

## 2017 - Restraints Worn Among Vehicle Drivers and Injured Passengers by Age

Age Group	Total Occupants			Fatalities			A - Suspected Serious			B - Suspected Minor			C - Possible Injury			No Injury		
	Total	Used Restraint	%	Total	Used Restraint	%	Total	Used Restraint	%	Total	Used Restraint	%	Total	Used Restraint	%	Total	Used Restraint	%
0 - 15	879	786	89.4	2	0	0.0	44	38	86.4	202	178	88.1	512	467	91.2	118	103	87.3
16 - 20	10,894	10,424	95.7	16	10	62.5	133	94	70.7	465	412	88.6	1,010	946	93.7	9,258	8,961	96.8
21 - 24	9,409	8,885	94.4	20	9	45.0	100	69	69.0	312	268	85.9	714	648	90.8	8,240	7,890	95.8
25 - 64	52,928	50,268	95.0	88	44	50.0	650	468	72.0	1,575	1,374	87.2	4,188	3,969	94.8	46,260	44,409	96.0
65 +	8,266	8,008	96.9	35	30	85.7	139	119	85.6	324	305	94.1	773	749	96.9	6,978	6,805	97.5
Unknown	6,740	6	0.1	0	0	0.0	1	0	0.0	0	0	0.0	3	0	0.0	250	6	2.4
<b>Total</b>	<b>89,116</b>	<b>78,377</b>	<b>87.9</b>	<b>161</b>	<b>93</b>	<b>57.8</b>	<b>1,067</b>	<b>788</b>	<b>73.9</b>	<b>2,878</b>	<b>2,537</b>	<b>88.2</b>	<b>7,200</b>	<b>6,779</b>	<b>94.2</b>	<b>71,104</b>	<b>68,174</b>	<b>95.9</b>

Note: Restraint Use includes shoulder belt only used, lap belt only used, both lap and shoulder belts used, child restraint used, restraint failure, and helmet worn.



# MSP District 6 - West (continued)

14

## 5-Year Trend - Restraint Use Among Drivers

Restraint Use	2013			2014			2015			2016			2017		
	Drivers	Fatal Drivers	Injured Drivers	Drivers	Fatal Drivers	Injured Drivers	Drivers	Fatal Drivers	Injured Drivers	Drivers	Fatal Drivers	Injured Drivers	Drivers	Fatal Drivers	Injured Drivers
No belts available	437	0	56	354	2	44	327	1	29	221	4	22	133	0	22
Shoulder belt only used	80	0	10	131	0	14	190	0	20	335	0	34	351	0	47
Lap belt only used	346	0	34	551	1	60	503	3	40	414	0	46	276	0	38
Both lap & shoulder belts used	66,947	39	6,431	70,039	39	6,501	68,155	46	6,401	74,754	46	7,474	74,840	70	7,266
No belts used	515	14	172	610	28	180	618	22	175	596	20	205	512	25	204
Child restraint used	2	0	0	4	0	0	0	0	0	5	0	1	1	0	0
Child restraint not used, unavailable or improper use	0	0	0	8	0	1	2	0	0	1	0	0	0	0	0
Restraint failure	21	0	2	66	0	9	55	1	4	53	0	8	38	0	8
Restraint use unknown	2,475	5	181	2,828	8	175	2,370	8	159	6,547	9	250	9,349	15	256
Helmet worn	493	10	360	491	8	351	457	8	323	435	8	332	376	14	259
Helmet not worn	237	18	163	212	11	160	219	11	157	278	14	202	214	13	165
Helmet use unknown	31	0	14	45	2	20	28	0	18	37	0	22	29	0	16
Uncoded & errors	5,004	0	6	5,585	0	4	5,463	0	8	2,075	0	2	109	0	0
<b>Total</b>	<b>76,588</b>	<b>86</b>	<b>7,429</b>	<b>80,924</b>	<b>99</b>	<b>7,519</b>	<b>78,387</b>	<b>100</b>	<b>7,334</b>	<b>85,751</b>	<b>101</b>	<b>8,598</b>	<b>86,228</b>	<b>137</b>	<b>8,281</b>

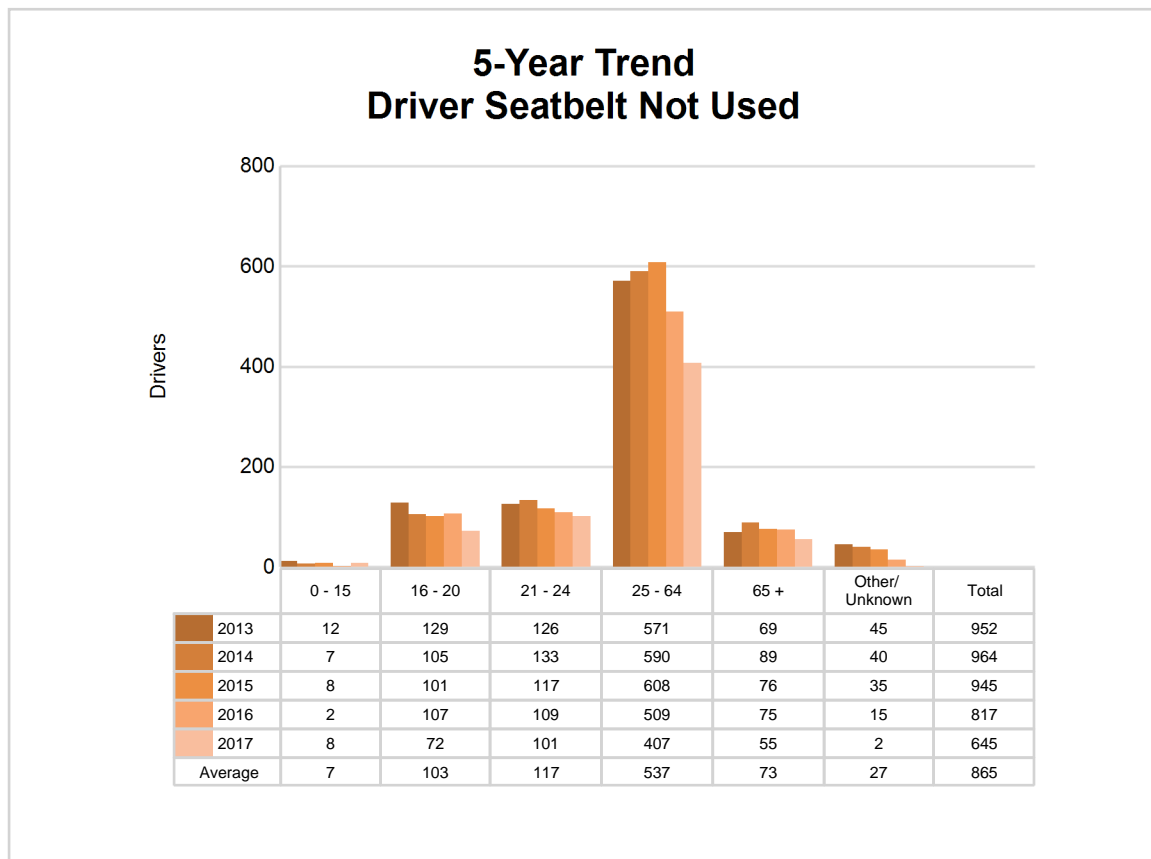
## 5-Year Trend - Restraint Use Among Drivers Coded Drinking

Restraint Use	2013			2014			2015			2016			2017		
	Drivers	Fatal Drivers	Injured Drivers	Drivers	Fatal Drivers	Injured Drivers	Drivers	Fatal Drivers	Injured Drivers	Drivers	Fatal Drivers	Injured Drivers	Drivers	Fatal Drivers	Injured Drivers
No belts available	14	0	5	16	0	4	10	1	1	8	1	3	7	0	5
Shoulder belt only used	4	0	3	3	0	0	6	0	0	7	0	0	10	0	7
Lap belt only used	6	0	1	10	0	2	14	2	1	9	0	3	3	0	0
Both lap & shoulder belts used	1,221	10	290	1,125	5	249	1,276	8	316	1,190	2	286	1,376	13	355
No belts used	81	5	50	87	9	50	99	10	53	103	6	64	102	14	63
Child restraint used	0	0	0	0	0	0	0	0	0	0	0	0	0	0	0
Child restraint not used, unavailable or improper use	0	0	0	2	0	0	0	0	0	0	0	0	0	0	0
Restraint failure	4	0	1	7	0	1	8	0	0	4	0	2	1	0	0
Restraint use unknown	265	1	66	245	3	58	233	3	56	280	3	74	358	6	73
Helmet worn	20	1	17	17	2	13	19	2	15	20	0	19	20	3	14
Helmet not worn	41	10	27	37	4	29	31	5	23	53	9	40	40	4	34
Helmet use unknown	1	0	1	6	2	3	2	0	2	1	0	1	2	0	2
Uncoded & errors	6	0	0	7	0	0	10	0	0	0	0	0	0	0	0
<b>Total</b>	<b>1,663</b>	<b>27</b>	<b>461</b>	<b>1,562</b>	<b>25</b>	<b>409</b>	<b>1,708</b>	<b>31</b>	<b>467</b>	<b>1,675</b>	<b>21</b>	<b>492</b>	<b>1,919</b>	<b>40</b>	<b>553</b>

## 5-Year Trend - Seatbelt Not Used Among Drivers by Age

Age Group	2013			2014			2015			2016			2017		
	Drivers	Fatal Drivers	Injured Drivers	Drivers	Fatal Drivers	Injured Drivers	Drivers	Fatal Drivers	Injured Drivers	Drivers	Fatal Drivers	Injured Drivers	Drivers	Fatal Drivers	Injured Drivers
0 - 15	12	0	2	7	1	0	8	0	3	2	0	0	8	0	4
16 - 20	129	2	33	105	3	33	101	1	22	107	3	32	72	3	33
21 - 24	126	0	41	133	3	38	117	3	30	109	3	29	101	6	40
25 - 64	571	9	131	590	18	130	608	16	131	509	11	142	407	15	131
65 +	69	3	19	89	5	23	76	3	17	75	7	24	55	1	18
Unknown	45	0	2	40	0	0	35	0	1	15	0	0	2	0	0
<b>Total</b>	<b>952</b>	<b>14</b>	<b>228</b>	<b>964</b>	<b>30</b>	<b>224</b>	<b>945</b>	<b>23</b>	<b>204</b>	<b>817</b>	<b>24</b>	<b>227</b>	<b>645</b>	<b>25</b>	<b>226</b>

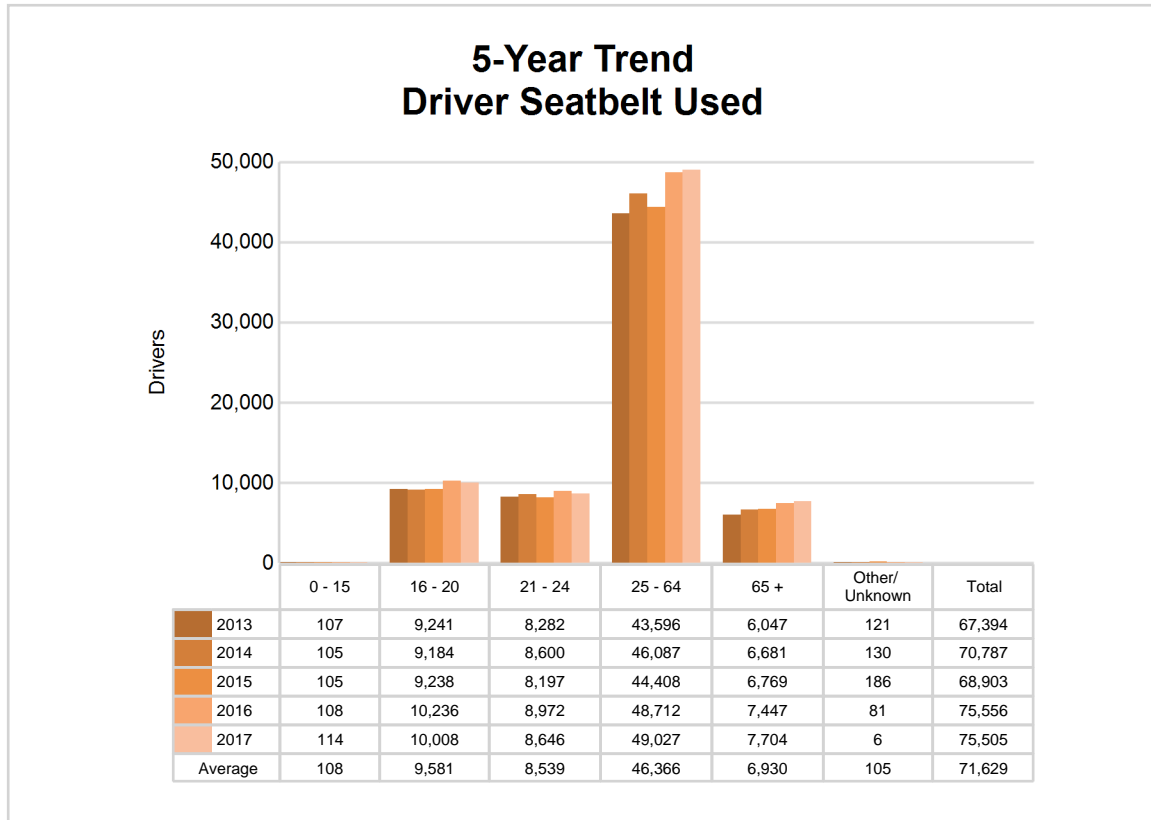
Note: Seatbelt Not Used includes no belts available or no belts used.



## 5-Year Trend - Seatbelt Used Among Drivers by Age

Age Group	2013			2014			2015			2016			2017		
	Drivers	Fatal Drivers	Injured Drivers	Drivers	Fatal Drivers	Injured Drivers	Drivers	Fatal Drivers	Injured Drivers	Drivers	Fatal Drivers	Injured Drivers	Drivers	Fatal Drivers	Injured Drivers
0 - 15	107	0	16	105	0	6	105	0	11	108	0	12	114	0	12
16 - 20	9,241	6	897	9,184	4	860	9,238	7	931	10,236	3	1,088	10,008	10	1,044
21 - 24	8,282	4	801	8,600	3	769	8,197	5	717	8,972	6	942	8,646	5	765
25 - 64	43,596	13	4,090	46,087	16	4,167	44,408	24	4,106	48,712	25	4,699	49,027	31	4,658
65 +	6,047	16	673	6,681	17	779	6,769	14	700	7,447	12	820	7,704	24	880
Unknown	121	0	0	130	0	3	186	0	0	81	0	1	6	0	0
<b>Total</b>	<b>67,394</b>	<b>39</b>	<b>6,477</b>	<b>70,787</b>	<b>40</b>	<b>6,584</b>	<b>68,903</b>	<b>50</b>	<b>6,465</b>	<b>75,556</b>	<b>46</b>	<b>7,562</b>	<b>75,505</b>	<b>70</b>	<b>7,359</b>

Note: Seatbelt Used includes shoulder belt only used, lap belt only used, both lap and shoulder belts used, and restraint failure.



## 5-Year Trend - Drivers in Crashes by Hazardous Action

Hazardous Action	2013		2014		2015		2016		2017	
	Total Drivers in Crashes	Drivers in Fatal Crashes	Total Drivers in Crashes	Drivers in Fatal Crashes	Total Drivers in Crashes	Drivers in Fatal Crashes	Total Drivers in Crashes	Drivers in Fatal Crashes	Total Drivers in Crashes	Drivers in Fatal Crashes
None	40,618	110	43,078	104	42,619	105	46,146	119	46,006	135
Speed too fast	7,957	24	7,800	24	5,542	27	6,553	23	6,521	29
Speed too slow	87	0	114	0	110	1	91	0	53	2
Failed to yield	6,292	18	7,214	17	6,983	18	7,629	23	7,489	26
Disregard traffic control	1,545	15	1,586	12	1,707	11	1,766	26	1,661	17
Drove wrong way	55	0	66	6	75	1	66	1	54	3
Drove left of center	373	7	374	16	354	12	370	4	368	12
Improper passing	326	3	447	0	372	5	439	2	463	1
Improper lane use	1,233	0	1,357	3	1,570	1	1,782	5	1,837	3
Improper turn	626	0	773	1	733	0	766	1	776	1
Improper/no signal	174	0	176	0	170	1	104	0	77	0
Improper backing	1,279	0	1,316	0	1,302	0	1,370	0	1,236	0
Unable to stop in assured clear distance	9,300	6	9,706	3	9,811	6	10,915	5	10,944	15
Other	2,637	10	2,717	13	2,544	6	2,668	10	2,725	7
Unknown	1,940	15	2,043	17	2,123	23	2,706	13	3,351	18
Reckless driving	301	2	349	4	393	3	385	7	388	11
Careless/negligent driving	1,691	11	1,749	6	1,963	12	1,950	4	2,024	10
Uncoded & errors	154	0	59	0	16	0	45	0	255	0
<b>Total</b>	<b>76,588</b>	<b>221</b>	<b>80,924</b>	<b>226</b>	<b>78,387</b>	<b>232</b>	<b>85,751</b>	<b>243</b>	<b>86,228</b>	<b>290</b>



The picture above represents all 2017 alcohol-involved fatal crashes in District 6.

In 2017, there were 1,959 alcohol-involved crashes in District 6:

60	K - Fatal Crashes
172	A - Suspected Serious Injury Crashes
299	B - Suspected Minor Injury Crashes
258	C - Possible Injury Crashes
1,170	O - Property Damage Only/No Injury Crashes



### Office of Highway Safety Planning

---

Physical Address:

7150 Harris Drive  
Dimondale, Michigan 48821

Mailing Address:

P.O. Box 30634  
Lansing, Michigan 48909

Phone: (517) 284-3112

Fax: (517) 284-3151

Find us on the web:

[MichiganTrafficCrashFacts.org](http://MichiganTrafficCrashFacts.org)

