



2017

**MTCF**  
Michigan Traffic  
Crash Facts

# Michigan Traffic Crash Facts

## Reporting Criteria

Please pay particular attention to the wording when interpreting the three levels of data gathered for this report.

### Crash

The Crash Level analyzes data related to crash events and returns one result per crash.

Examples: Time, weather, and location.

### Units

The Units Level analyzes the experience of the units in the crash and returns one result per vehicle, driver, pedestrian, bicyclist, or train.

Examples: Vehicle type, driver condition, and unit events.

### People

The People Level analyzes the experience of the people involved in the crash and returns one result per occupant/person/party.

Examples: Age, injury severity, and seat belt or helmet use.

### **KABCO Injury Indicator:**

K = Killed

A = Suspected Serious Injury

B = Suspected Minor Injury

C = Possible Injury

O = No Injury

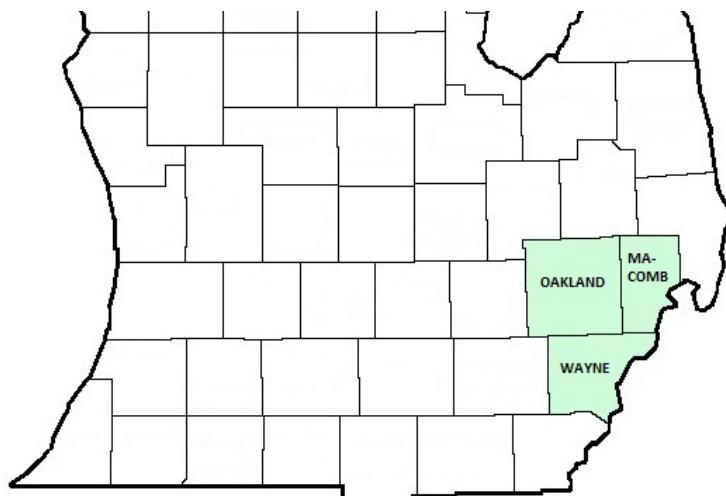
Property Damage Only (PDO)



## Michigan State Police (MSP) District 2 - Metro

### 2017 Traffic Crash Data & 2013-2017 5-Year Trends

Beginning in 2011, District 2 is comprised of Macomb, Oakland, and Wayne counties. Trend tables for this report are based on those counties.



### Sources:

The crashes in this report occurred on public roadways in Michigan and resulted in injuries, fatalities, or property damage (with \$1,000 as a reporting threshold). The information was gathered from Michigan Traffic Crash Report Forms (UD-10) submitted by local police departments, sheriff's offices, and the Michigan State Police. Other related information was obtained from the departments of Transportation, State, and Community Health.

This page left intentionally blank

## MSP District 2 - Metro

- There were 122,088 crashes in District 2 during 2017. [Page 1]
- A total of 270 fatalities resulted from 254 fatal crashes in 2017 in District 2. [Page 1]
- There were 34,906 injuries and 25,492 injury crashes. [Page 1]
- There were 96,342 property damage only crashes (no fatalities or injuries). [Page 1]
- December had the highest number of crashes (12,891). [Pages 1-2]
- June had the highest number of fatal crashes (29) and fatalities (32). [Pages 1-2]
- May had the highest number of injury crashes (2,439) and injuries (3,365). [Page 1]
- December had the highest number of property damage only crashes (10,730). [Page 1]
- Of all vehicles involved in fatal crashes, 35 (8.0%) were motorcycles. [Page 1]
- Friday was the day of the week with the highest number of crashes (19,805) and Saturday and Thursday had the highest number of fatal crashes (40). [Pages 2-3]
- The 3:00 PM - 5:59 PM time period had the highest number of crashes (32,537). This holds true for every year between 2013 and 2017. The 9:00 PM - 11:59 PM time period had the highest number of fatal crashes (55). This holds true for every year between 2013 and 2017. [Pages 5-6]
- During the period from 2013 to 2017, the highest number of deer crashes occurred in 2015 (2,903). The 6:00 PM - 8:59 PM time period consistently had the highest number of deer-involved crashes during the five-year period. There were 1 fatal crashes involving deer in 2017. [Pages 7-8]
- Wayne County (45.0%) had the highest number of crashes in District 2 in 2017, followed by Oakland County (34.2%), and Macomb County (20.8%). [Page 8]
- Wayne County (58.9%) had the highest number of fatalities in District 2 in 2017, followed by Oakland County (25.6%), and Macomb County (15.6%). [Page 8]
- The highest number of drivers in crashes (238,176) occurred during 2017 and the highest number of drivers coded drinking in crashes (3,202) occurred during 2015 within the five year period between 2013 and 2017. [Page 9]
- A total of 3,106 crashes involved alcohol in 2017. [Page 10]
- Alcohol-involved fatal crashes were the highest in 2016 during the five-year period from 2013 to 2017 at 97. [Page 10]
- A total of 971 crashes, 54 fatal crashes, and 105 suspected serious injury crashes involved drugs in 2017. [Page 11]
- There were 195,537 drivers wearing seatbelts and 1212 drivers not wearing seatbelts in crashes in 2017. Of the 1212 drivers not wearing seat belts, 29 (2.4%) were killed and 461 (38.0%) were injured. [Pages 14-16]
- The most common hazardous action coded for drivers in 2017 in all crashes was unable to stop in assured clear distance (40,407), while the most common hazardous action coded for drivers in fatal crashes was unknown (54). [Page 17]

# MSP District 2 - Metro (continued)

## District 2 Experience

In 2017:

There were 238,176 drivers involved in 122,088 motor vehicle crashes in MSP District 2. Of those crashes, 254 were classified as fatal, resulting in 270 fatalities. An additional 34,906 persons were injured.

District 2 experienced the highest number of motor vehicle crashes (12,891) in December, the highest number of fatal crashes (29) and the highest number of persons killed (32) in June.

Michigan driver statistics indicate 6.4 percent of licensed drivers in District 2 were age 16-20, and 9.6 percent of drivers in crashes were also in that age group.

## 2017 - Crashes and Injuries by Month

Month	Crashes				Persons	
	Total	Fatal	Injury	Property Damage Only (PDO)	Fatalities	Injuries
January	9,733	23	1,850	7,860	27	2,559
February	8,079	20	1,657	6,402	21	2,219
March	10,744	18	2,130	8,596	19	2,862
April	8,697	18	1,859	6,820	19	2,585
May	10,917	24	2,439	8,454	25	3,365
June	10,469	29	2,303	8,137	32	3,230
July	9,213	19	2,176	7,018	19	3,000
August	9,820	19	2,226	7,575	19	3,021
September	9,814	24	2,246	7,544	24	3,086
October	11,248	18	2,379	8,851	19	3,247
November	10,463	19	2,089	8,355	22	2,834
December	12,891	23	2,138	10,730	24	2,898
<b>Total</b>	<b>122,088</b>	<b>254</b>	<b>25,492</b>	<b>96,342</b>	<b>270</b>	<b>34,906</b>

## 2017 - Driver Statistics

Age Group	District 2			Driver Rates	
	2017 Population	Licensed Drivers	Drivers in Crashes	Per 10k Population	Per 10k Licensed
0 - 15	761,465	17,483	305	4.0	174.5
16 - 20	234,399	177,106	22,789	972.2	1,286.7
21 - 24	200,765	178,676	21,563	1,074.0	1,206.8
25 - 64	2,064,497	1,868,135	143,551	695.3	768.4
65 +	614,701	515,995	21,422	348.5	415.2
Unknown	0	0	28,546	--	--
<b>Total</b>	<b>3,875,827</b>	<b>2,757,395</b>	<b>238,176</b>	<b>614.5</b>	<b>863.8</b>

## 2017 - Vehicles in Crashes

Vehicle Type	Motor Vehicles		Fatal Crashes		Injury Crashes	PDO Crashes
	Number of Vehicles	% of Total	Number	% of Total	Number	Number
Passenger car, SUV, van	203,885	85.6	340	76.2	44,297	159,248
Motor home	436	0.2	2	0.4	93	341
Pickup truck	18,299	7.7	34	7.6	3,578	14,687
Small truck under 10,000 lbs. GVWR	1,423	0.6	0	0.0	270	1,153
Motorcycle	970	0.4	35	7.8	674	261
Moped / goped	109	0.0	1	0.2	90	18
Go-cart / golf cart	22	0.0	1	0.2	8	13
Snowmobile	4	0.0	0	0.0	1	3
Off-Road Vehicle - ORV / All-Terrain Vehicle - ATV	36	0.0	5	1.1	21	10
Other	918	0.4	1	0.2	134	783
Truck/bus over 10,000 lbs.	5,903	2.5	19	4.3	1,054	4,830
Unknown	6,171	2.6	8	1.8	743	5,420
<b>Total</b>	<b>238,176</b>	<b>100.0</b>	<b>446</b>	<b>100.0</b>	<b>50,963</b>	<b>186,767</b>

## 5-Year Trend - Crashes by Month

Month	2013		2014		2015		2016		2017	
	Total Crashes	Fatal Crashes	Total Crashes	Fatal Crashes	Total Crashes	Fatal Crashes	Total Crashes	Fatal Crashes	Total Crashes	Fatal Crashes
January	9,061	20	13,865	15	11,314	19	9,778	17	9,733	23
February	8,599	14	9,658	19	10,234	12	9,649	23	8,079	20
March	7,808	17	9,279	12	8,739	18	9,783	13	10,744	18
April	7,606	16	7,127	21	7,918	23	9,287	32	8,697	18
May	9,090	21	8,957	19	9,558	20	9,973	24	10,917	24
June	8,666	23	8,987	27	9,451	36	10,002	30	10,469	29
July	8,281	35	7,781	24	8,960	33	9,549	23	9,213	19
August	8,186	20	8,677	23	8,943	36	9,841	39	9,820	19
September	8,613	31	9,234	26	9,755	22	10,447	34	9,814	24
October	9,825	18	10,155	29	10,015	17	10,675	29	11,248	18
November	9,210	22	10,740	19	10,407	33	10,282	34	10,463	19
December	10,406	17	8,393	24	9,869	24	11,969	23	12,891	23
<b>Total</b>	<b>105,351</b>	<b>254</b>	<b>112,853</b>	<b>258</b>	<b>115,163</b>	<b>293</b>	<b>121,235</b>	<b>321</b>	<b>122,088</b>	<b>254</b>

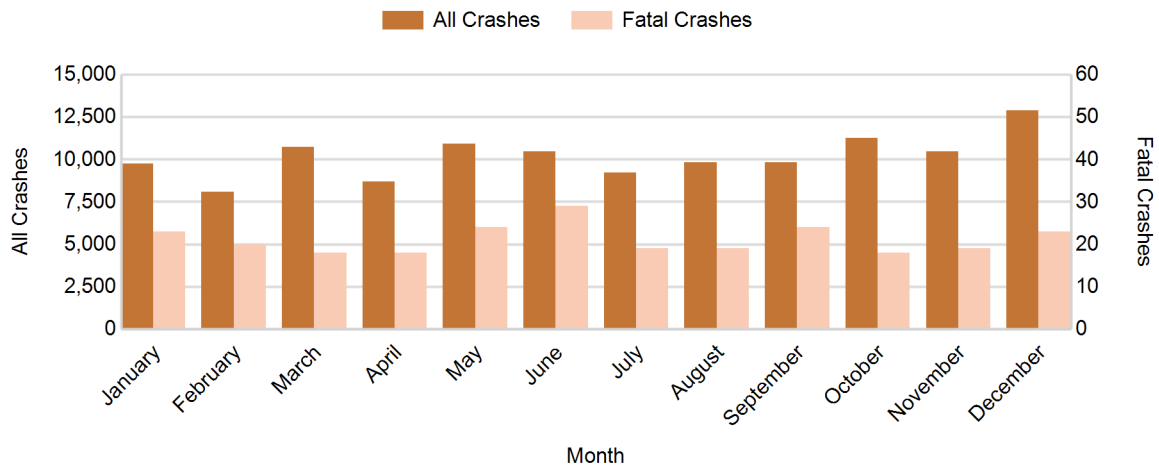
Note: † Indicates that the highest number of total crashes reported in the 5-year period occurred in the same month

## 5-Year Trend - Crashes by Day of Week

Day	2013		2014		2015		2016		2017	
	Total Crashes	Fatal Crashes	Total Crashes	Fatal Crashes	Total Crashes	Fatal Crashes	Total Crashes	Fatal Crashes	Total Crashes	Fatal Crashes
Monday	15,540	28	16,324	44	16,936	39	17,242	32	18,636	34
Tuesday	15,672	29	17,759	36	17,868	35	18,669	37	19,371	39
Wednesday	16,457	30	19,086	22	18,438	36	19,477	44	19,532	31
Thursday	16,722	38	17,905	30	17,573	36	19,612	44	19,209	40
Friday	17,124	41	18,225	36	18,687	52	20,093	47	19,805	35
Saturday	13,920	50	13,250	46	14,551	58	14,573	62	14,270	40
Sunday	9,916	38	10,304	44	11,110	37	11,569	55	11,265	35
<b>Total</b>	<b>105,351</b>	<b>254</b>	<b>112,853</b>	<b>258</b>	<b>115,163</b>	<b>293</b>	<b>121,235</b>	<b>321</b>	<b>122,088</b>	<b>254</b>

Note: † Indicates that the highest number of total crashes reported in the 5-year period occurred on the same day of the week

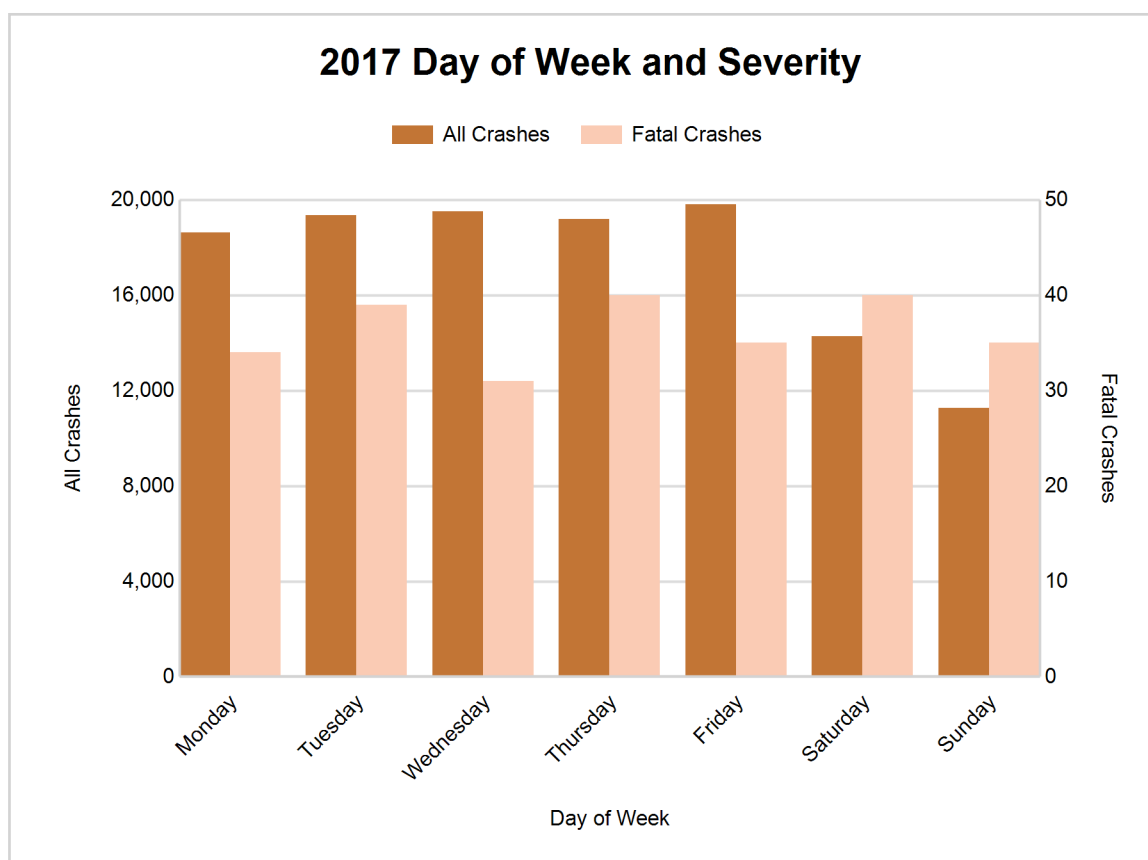
## 2017 Crashes by Month



## MSP District 2 - Metro (continued)

### 2017 - Crashes by Day of Week

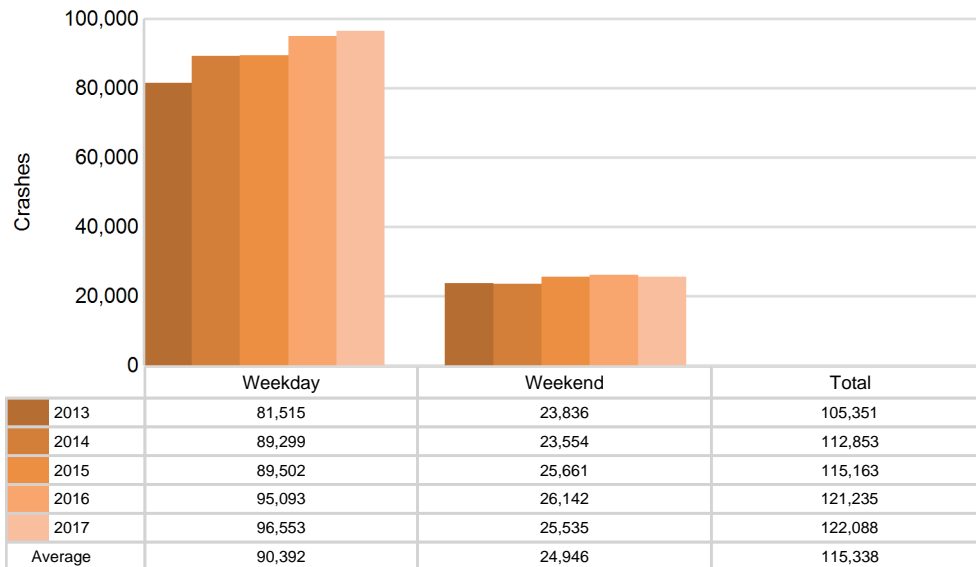
Day	All Crashes		Fatal Crashes		Injury Crashes			PDO Crashes
	Number	% of Total	Number	% of Fatal	A	B	C	Number
Monday	18,636	15.3	34	13.4	228	1,032	2,619	14,723
Tuesday	19,371	15.9	39	15.4	198	1,018	2,672	15,444
Wednesday	19,532	16.0	31	12.2	221	1,061	2,661	15,558
Thursday	19,209	15.7	40	15.7	225	1,051	2,668	15,225
Friday	19,805	16.2	35	13.8	228	1,092	2,753	15,697
Saturday	14,270	11.7	40	15.7	240	948	1,941	11,101
Sunday	11,265	9.2	35	13.8	204	806	1,626	8,594
<b>Total</b>	<b>122,088</b>	<b>100.0</b>	<b>254</b>	<b>100.0</b>	<b>1,544</b>	<b>7,008</b>	<b>16,940</b>	<b>96,342</b>



## 5-Year Trend - Crashes by Weekday and Weekend

Portion of Week	2013		2014		2015		2016		2017	
	Total Crashes	Fatal Crashes	Total Crashes	Fatal Crashes	Total Crashes	Fatal Crashes	Total Crashes	Fatal Crashes	Total Crashes	Fatal Crashes
Weekday	81,515	166	89,299	168	89,502	198	95,093	204	96,553	179
Weekend	23,836	88	23,554	90	25,661	95	26,142	117	25,535	75
<b>Total</b>	<b>105,351</b>	<b>254</b>	<b>112,853</b>	<b>258</b>	<b>115,163</b>	<b>293</b>	<b>121,235</b>	<b>321</b>	<b>122,088</b>	<b>254</b>

## 5-Year Crash Trends by Weekday (Monday - Friday) and Weekend (Saturday & Sunday)

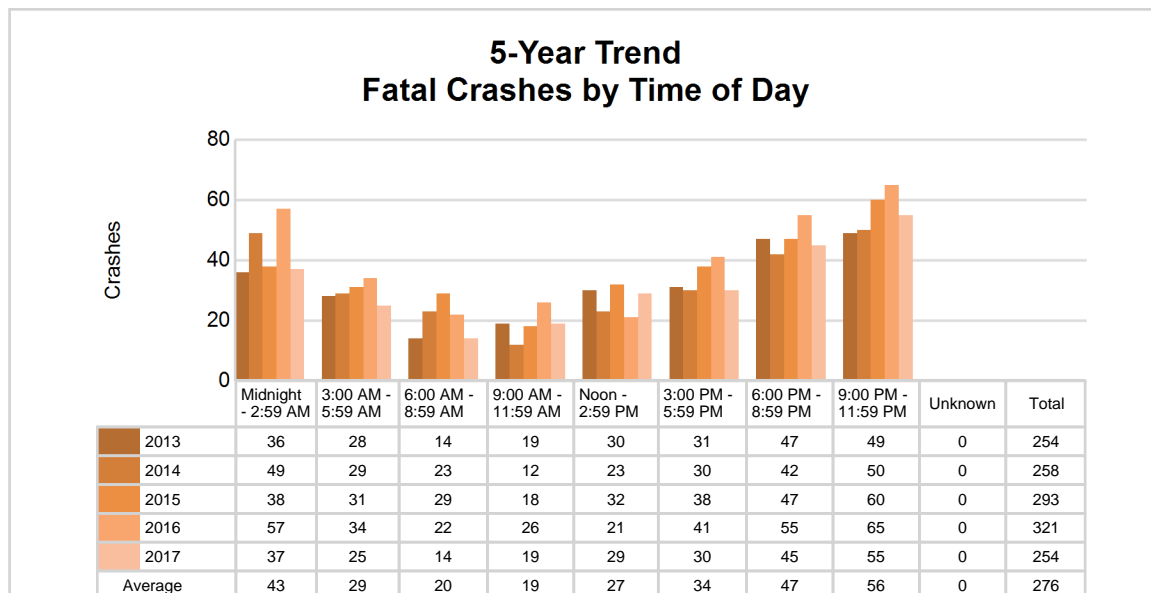
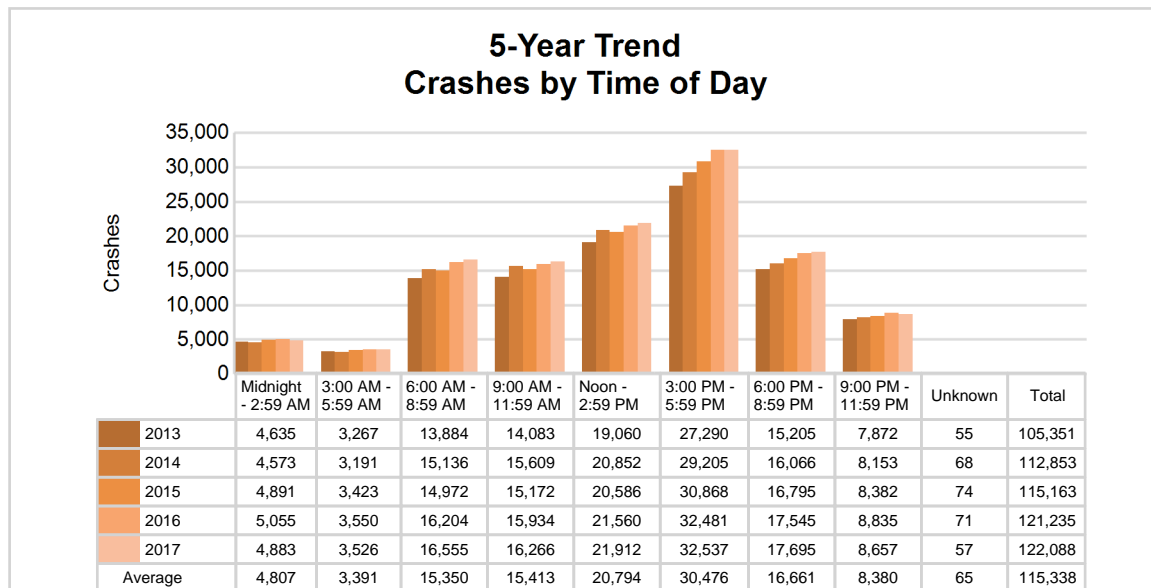


# MSP District 2 - Metro (continued)

## 5-Year Trend - Crashes by Time of Day

Time of Day	2013		2014		2015		2016		2017	
	Total Crashes	Fatal Crashes	Total Crashes	Fatal Crashes	Total Crashes	Fatal Crashes	Total Crashes	Fatal Crashes	Total Crashes	Fatal Crashes
Midnight - 2:59 AM	4,635	36	4,573	49	4,891	38	5,055	57	4,883	37
3:00 AM - 5:59 AM	3,267	28	3,191	29	3,423	31	3,550	34	3,526	25
6:00 AM - 8:59 AM	13,884	14	15,136	23	14,972	29	16,204	22	16,555	14
9:00 AM - 11:59 AM	14,083	19	15,609	12	15,172	18	15,934	26	16,266	19
Noon - 2:59 PM	19,060	30	20,852	23	20,586	32	21,560	21	21,912	29
3:00 PM - 5:59 PM	27,290 †	31	29,205 †	30	30,868 †	38	32,481 †	41	32,537 †	30
6:00 PM - 8:59 PM	15,205	47	16,066	42	16,795	47	17,545	55	17,695	45
9:00 PM - 11:59 PM	7,872	49	8,153	50	8,382	60	8,835	65	8,657	55
Unknown	55	0	68	0	74	0	71	0	57	0
<b>Total</b>	<b>105,351</b>	<b>254</b>	<b>112,853</b>	<b>258</b>	<b>115,163</b>	<b>293</b>	<b>121,235</b>	<b>321</b>	<b>122,088</b>	<b>254</b>

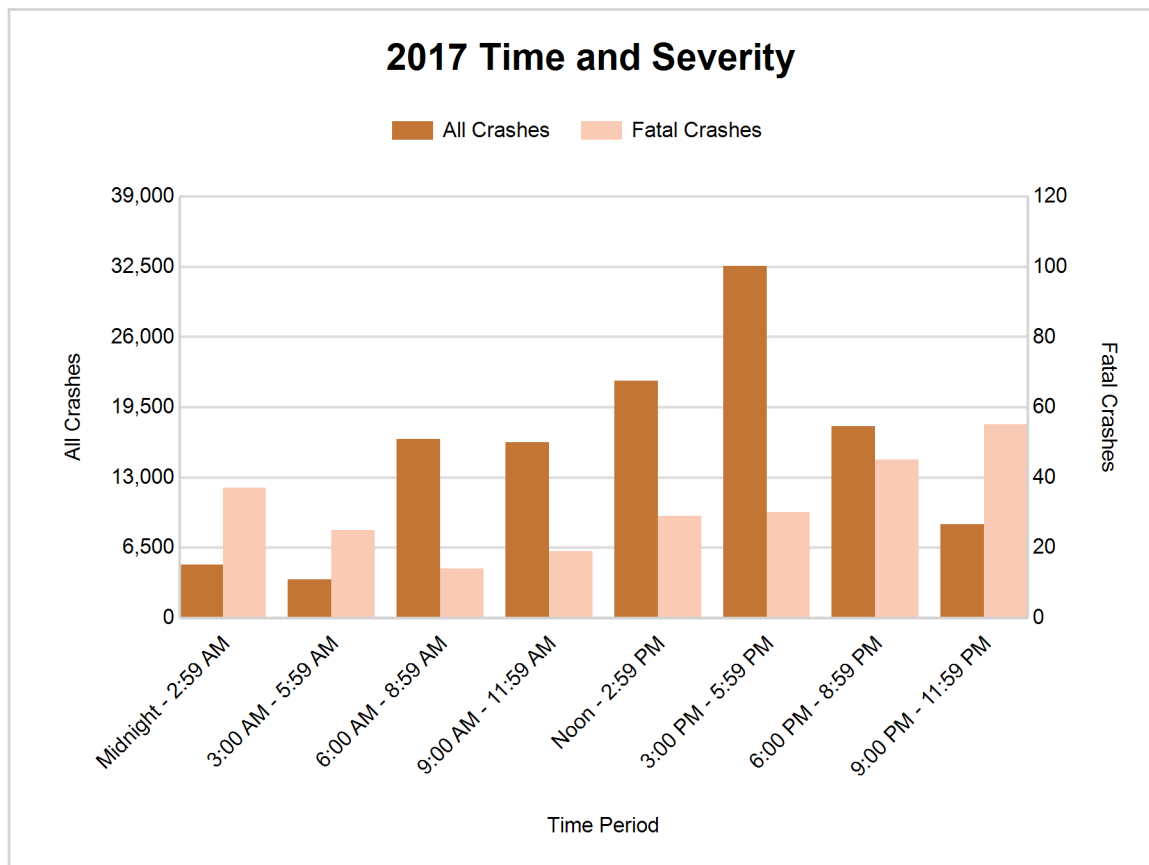
Note: † Indicates that the highest number of total crashes reported in the 5-year period occurred in the same time period





## 2017 - Time and Severity

Time of Day	All Crashes		Fatal Crashes		Injury Crashes			PDO Crashes
	Number	% of Total	Number	% of Fatal	A	B	C	Number
Midnight - 2:59 AM	4,883	4.0	37	14.6	141	411	712	3,582
3:00 AM - 5:59 AM	3,526	2.9	25	9.8	87	236	436	2,742
6:00 AM - 8:59 AM	16,555	13.6	14	5.5	139	803	2,149	13,450
9:00 AM - 11:59 AM	16,266	13.3	19	7.5	162	905	2,158	13,022
Noon - 2:59 PM	21,912	17.9	29	11.4	248	1,284	3,115	17,236
3:00 PM - 5:59 PM	32,537	26.7	30	11.8	320	1,681	4,671	25,835
6:00 PM - 8:59 PM	17,695	14.5	45	17.7	253	1,081	2,484	13,832
9:00 PM - 11:59 PM	8,657	7.1	55	21.7	194	607	1,210	6,591
Unknown	57	0.0	0	0.0	0	0	5	52
<b>Total</b>	<b>122,088</b>	<b>100.0</b>	<b>254</b>	<b>100.0</b>	<b>1,544</b>	<b>7,008</b>	<b>16,940</b>	<b>96,342</b>

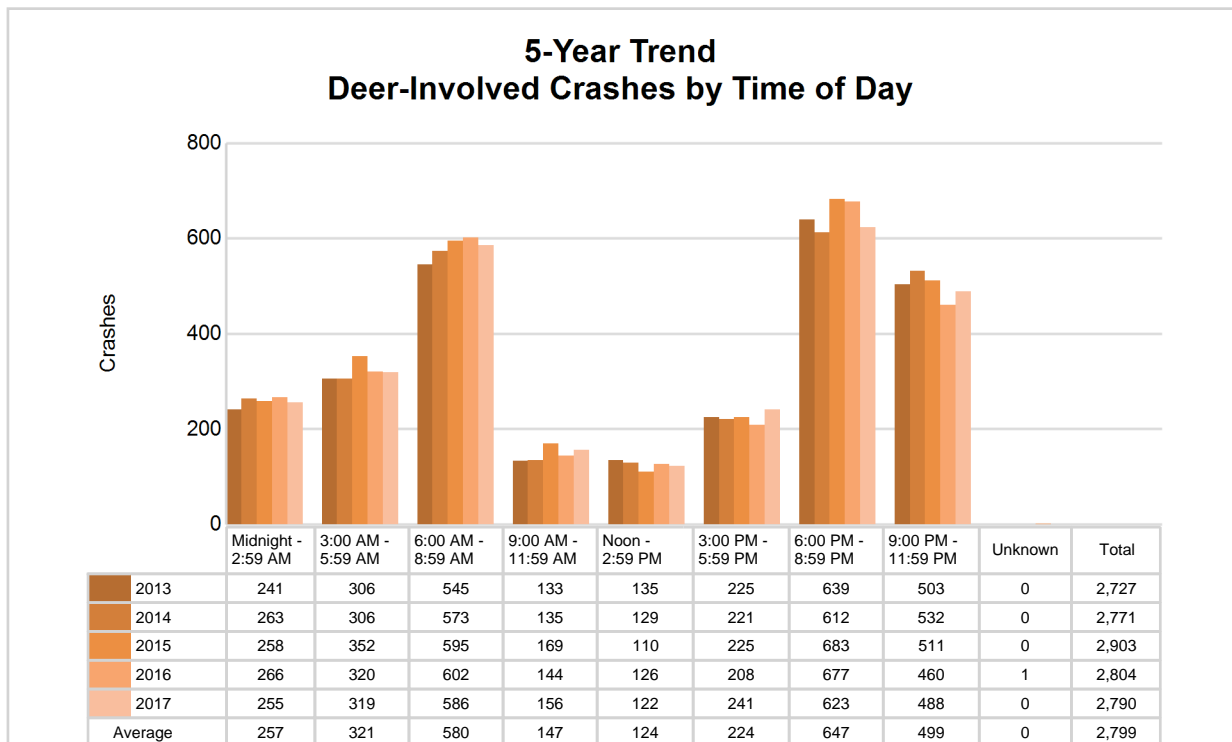


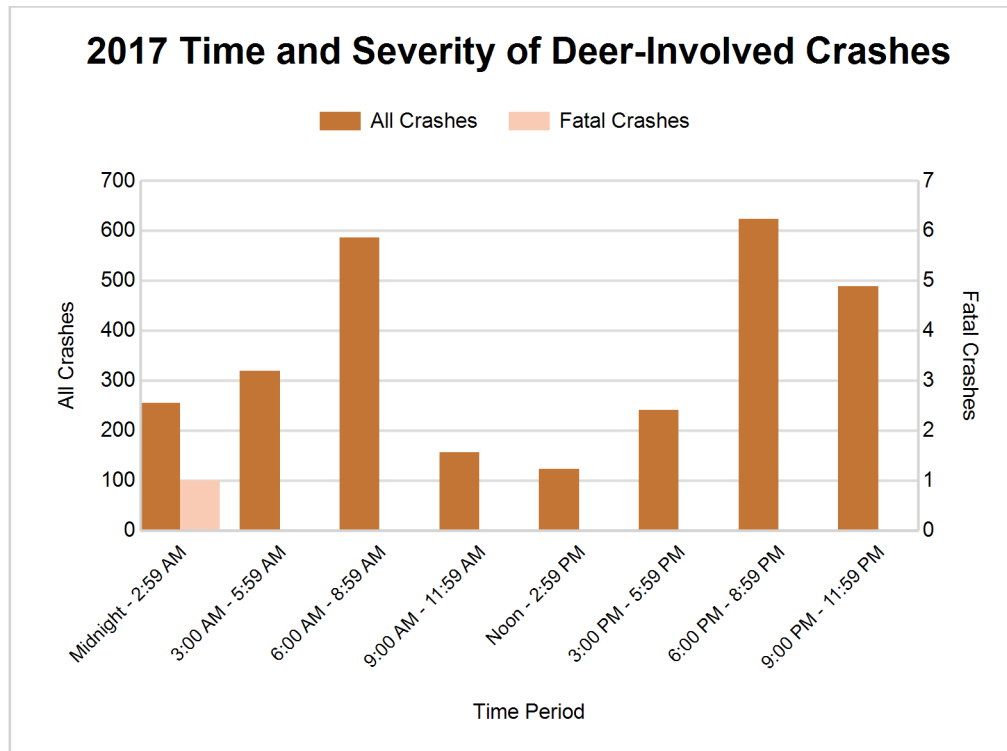
## MSP District 2 - Metro (continued)

### 5-Year Trend - Deer-Involved Crashes by Time of Day

Time of Day	2013		2014		2015		2016		2017	
	Total Crashes	Fatal Crashes	Total Crashes	Fatal Crashes	Total Crashes	Fatal Crashes	Total Crashes	Fatal Crashes	Total Crashes	Fatal Crashes
Midnight - 2:59 AM	241	0	263	0	258	0	266	0	255	1
3:00 AM - 5:59 AM	306	0	306	0	352	0	320	0	319	0
6:00 AM - 8:59 AM	545	0	573	0	595	0	602	0	586	0
9:00 AM - 11:59 AM	133	0	135	0	169	0	144	0	156	0
Noon - 2:59 PM	135	0	129	0	110	0	126	0	122	0
3:00 PM - 5:59 PM	225	0	221	0	225	0	208	0	241	0
6:00 PM - 8:59 PM	639 †	0	612 †	0	683 †	0	677 †	0	623 †	0
9:00 PM - 11:59 PM	503	1	532	0	511	0	460	0	488	0
Unknown	0	0	0	0	0	0	1	0	0	0
Total	2,727	1	2,771	0	2,903	0	2,804	0	2,790	1

Note: † Indicates that the highest number of total crashes reported in the 5-year period occurred in the same time period





#### 2017 - Reported Motor Vehicle Crashes by County

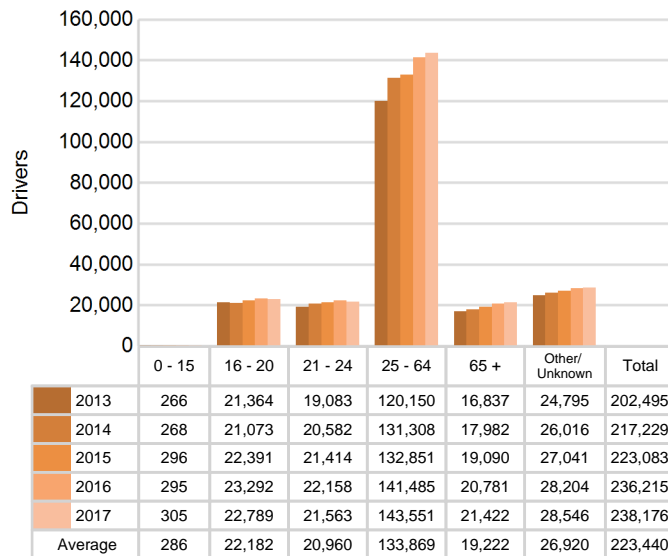
County	Crashes											Persons	
	Total	Fatal	Injury	Property Damage	Inter-state	US Route	State Route	Local Street	Alcohol-Involved	Drug-Involved	Deer-Involved	Fatalities	Injuries
Macomb	25,385	41	5,454	19,890	3,060	0	6,818	15,489	731	256	605	42	7,348
Oakland	41,783	68	7,875	33,840	7,428	2,484	7,018	24,795	1,060	298	1,765	69	10,570
Wayne	54,920	145	12,163	42,612	9,233	3,708	10,311	31,605	1,315	417	420	159	16,988
<b>Total</b>	<b>122,088</b>	<b>254</b>	<b>25,492</b>	<b>96,342</b>	<b>19,721</b>	<b>6,192</b>	<b>24,147</b>	<b>71,889</b>	<b>3,106</b>	<b>971</b>	<b>2,790</b>	<b>270</b>	<b>34,906</b>

## MSP District 2 - Metro (continued)

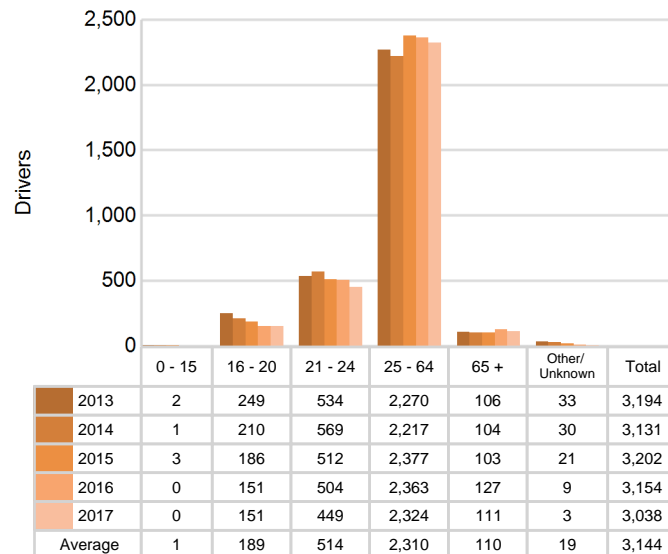
### 5-Year Trend - Drivers in Crashes Coded Drinking by Driver Age

Driver Age	2013		2014		2015		2016		2017	
	Total Drivers in Crashes	Total Drivers Coded Drinking	Total Drivers in Crashes	Total Drivers Coded Drinking	Total Drivers in Crashes	Total Drivers Coded Drinking	Total Drivers in Crashes	Total Drivers Coded Drinking	Total Drivers in Crashes	Total Drivers Coded Drinking
0 - 15	266	2	268	1	296	3	295	0	305	0
16 - 20	21,364	249	21,073	210	22,391	186	23,292	151	22,789	151
21 - 24	19,083	534	20,582	569	21,414	512	22,158	504	21,563	449
25 - 64	120,150	2,270	131,308	2,217	132,851	2,377	141,485	2,363	143,551	2,324
65 +	16,837	106	17,982	104	19,090	103	20,781	127	21,422	111
Unknown	24,795	33	26,016	30	27,041	21	28,204	9	28,546	3
<b>Total</b>	<b>202,495</b>	<b>3,194</b>	<b>217,229</b>	<b>3,131</b>	<b>223,083</b>	<b>3,202</b>	<b>236,215</b>	<b>3,154</b>	<b>238,176</b>	<b>3,038</b>

**5-Year Trend  
Total Drivers in Crashes by Age**



**5-Year Trend  
Total Drivers Coded Drinking by Age**



## 2017 - Bodily Alcohol Concentration (BAC) Results Among All Vehicle Drivers in Alcohol-Involved Crashes by Age

Age Group	Drivers				BAC Result Range for Drivers Coded Drinking				
	Total Drivers in Alcohol-Involved Crashes	Total Drivers Tested in all Crashes	Total Drivers Coded Drinking, Tested	Total Drivers Coded Drinking	BAC = 0.00	BAC 0.01 g/dL to 0.07 g/dL	BAC 0.08 g/dL to 0.16 g/dL	BAC 0.17 g/dL and Above	BAC Not Reported
0 - 15	2	0	0	0	0	0	0	0	0
16 - 20	273	182	133	151	5	15	34	32	65
21 - 24	633	430	384	449	4	41	111	120	173
25 - 64	3,546	2,237	1,970	2,324	40	126	496	691	971
65 +	231	127	101	111	0	10	28	25	48
Unknown	612	1	1	3	0	0	0	0	3
<b>Total</b>	<b>5,297</b>	<b>2,977</b>	<b>2,589</b>	<b>3,038</b>	<b>49</b>	<b>192</b>	<b>669</b>	<b>868</b>	<b>1,260</b>

Notes: BAC measured in grams (g) per deciliter (dL).

BAC may not be reported if drivers are not tested or if the results are not available immediately (as in the case of a blood test).

A driver may be coded by the officer as drinking even though no test is administered.

## Alcohol-Involved Crashes

In 2017, there were 5,297 drivers in alcohol-involved crashes; 3,038 (57.4%) of those drivers were coded as had-been-drinking by the officer on the crash form.

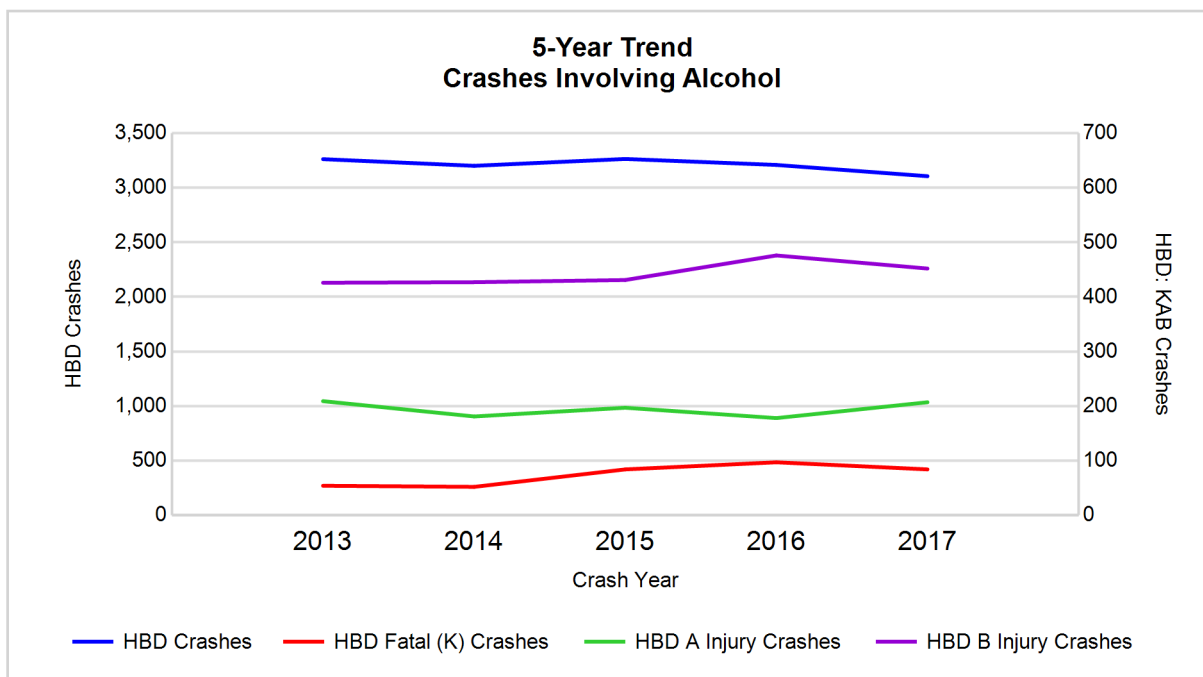
- 1,537 (50.6%) of the 3,038 drivers had a blood alcohol concentration (BAC) of 0.08 g/dL (grams per deciliter) or greater, and 868 (56.5%) of the 1,537 drivers had a BAC at or above 0.17 g/dL.
- 2,589 (85.2%) of the 3,038 drivers were coded as had-been-drinking and were tested for alcohol consumption.

## 5-Year Trend - Crashes Involving Alcohol

Year	All Crashes	HBD Crashes	% HBD	Fatal Crashes	HBD Fatal Crashes	% HBD	A Injury Crashes	HBD A Injury Crashes	% HBD	B Injury Crashes	HBD B Injury Crashes	% HBD
2013	105,351	3,262	3.1	254	54	21.3	1,442	209	14.5	5,281	426	8.1
2014	112,853	3,201	2.8	258	52	20.2	1,367	181	13.2	5,342	427	8.0
2015	115,163	3,264	2.8	293	84	28.7	1,301	197	15.1	5,549	431	7.8
2016	121,235	3,209	2.6	321	97	30.2	1,360	178	13.1	6,400	476	7.4
2017	122,088**	3,106*	2.5*	254	84	33.1**	1,544**	207	13.4	7,008**	452	6.4*

Note: \* Indicates that the most recent year is the lowest number or percentage reported in the 5-year period in that column

\*\* Indicates that the most recent year is the highest number or percentage reported in the 5-year period in that column



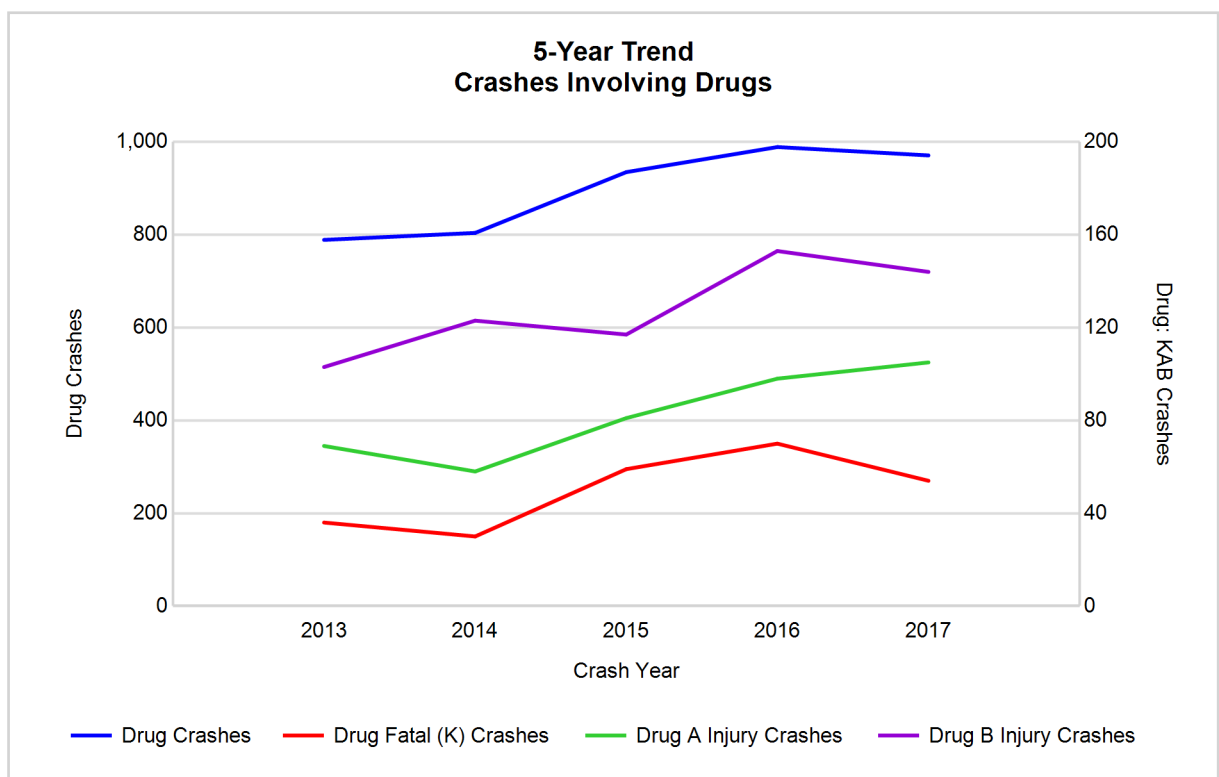
Note: Had-Been-Drinking (HBD)

## 5-Year Trend - Crashes Involving Drugs

Year	All Crashes	Drug Crashes	% Drug	Fatal Crashes	Drug Fatal Crashes	% Drug	A Injury Crashes	Drug A Injury Crashes	% Drug	B Injury Crashes	Drug B Injury Crashes	% Drug
2013	105,351	789	0.7	254	36	14.2	1,442	69	4.8	5,281	103	2.0
2014	112,853	804	0.7	258	30	11.6	1,367	58	4.2	5,342	123	2.3
2015	115,163	935	0.8	293	59	20.1	1,301	81	6.2	5,549	117	2.1
2016	121,235	989	0.8	321	70	21.8	1,360	98	7.2	6,400	153	2.4
2017	122,088**	971	0.8	254	54	21.3	1,544**	105**	6.8	7,008**	144	2.1

Note: \* Indicates that the most recent year is the lowest number or percentage reported in the 5-year period in that column

\*\* Indicates that the most recent year is the highest number or percentage reported in the 5-year period in that column

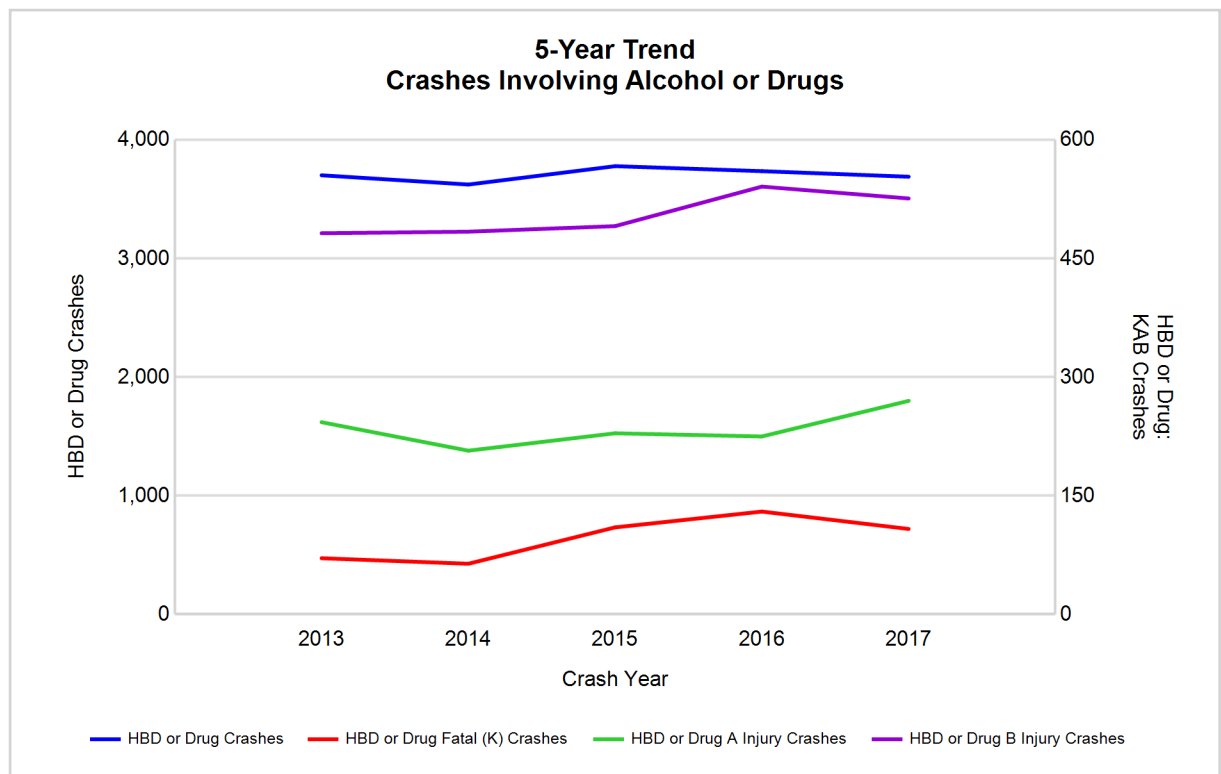


## 5-Year Trend - Crashes Involving Alcohol or Drugs

Year	All Crashes	HBD or Drug Crashes	% HBD or Drug	Fatal Crashes	HBD or Drug Fatal Crashes	% HBD or Drug	A Injury Crashes	HBD or Drug A Injury Crashes	% HBD or Drug	B Injury Crashes	HBD or Drug B Injury Crashes	% HBD or Drug
2013	105,351	3,702	3.5	254	71	28.0	1,442	243	16.9	5,281	482	9.1
2014	112,853	3,624	3.2	258	64	24.8	1,367	207	15.1	5,342	484	9.1
2015	115,163	3,779	3.3	293	110	37.5	1,301	229	17.6	5,549	491	8.8
2016	121,235	3,737	3.1	321	130	40.5	1,360	225	16.5	6,400	541	8.5
2017	122,088**	3,690	3.0*	254	108	42.5**	1,544**	270**	17.5	7,008**	526	7.5*

Note: \* Indicates that the most recent year is the lowest number or percentage reported in the 5-year period in that column

\*\* Indicates that the most recent year is the highest number or percentage reported in the 5-year period in that column



Note: Had-Been-Drinking (HBD)

## 2017 - Restraints Worn Among Vehicle Drivers and Injured Passengers by Vehicle Type

Vehicle Type	Total Occupants			Fatalities			A - Suspected Serious			B - Suspected Minor			C - Possible Injury			No Injury		
	Total	Used Restraint	%	Total	Used Restraint	%	Total	Used Restraint	%	Total	Used Restraint	%	Total	Used Restraint	%	Total	Used Restraint	%
Passenger car, SUV, van	211,392	178,948	84.7	148	66	44.6	1,208	882	73.0	7,003	6,293	89.9	22,158	20,317	91.7	160,130	151,349	94.5
Motor home	447	369	82.6	1	1	100.0	3	3	100.0	12	10	83.3	42	37	88.1	344	318	92.4
Pickup truck	18,639	15,906	85.3	7	4	57.1	87	68	78.2	434	395	91.0	1,154	1,075	93.2	14,991	14,359	95.8
Small truck under 10,000 lbs. GVWR	1,447	1,156	79.9	0	0	0.0	3	2	66.7	17	15	88.2	77	65	84.4	1,169	1,074	91.9
Motorcycle	1,024	676	66.0	34	16	47.1	187	114	61.0	337	244	72.4	182	133	73.1	251	169	67.3
Moped / goped	114	26	22.8	1	0	0.0	23	3	13.0	41	17	41.5	31	3	9.7	9	3	33.3
Go-cart / golf cart	25	6	24.0	1	0	0.0	1	1	100.0	6	0	0.0	1	1	100.0	12	4	33.3
Snowmobile	4	0	0.0	0	0	0.0	0	0	0.0	0	0	0.0	0	0	0.0	1	0	0.0
Off-Road Vehicle - ORV / All-Terrain Vehicle - ATV	38	7	18.4	3	0	0.0	3	0	0.0	7	2	28.6	11	1	9.1	7	4	57.1
Other	938	564	60.1	1	0	0.0	7	4	57.1	21	10	47.6	45	24	53.3	647	526	81.3
Truck/bus over 10,000 lbs.	6,065	5,273	86.9	1	1	100.0	15	10	66.7	69	50	72.5	248	112	45.2	5,376	5,099	94.8
Unknown	6,175	19	0.3	0	0	0.0	0	0	0.0	2	2	100.0	3	3	100.0	64	13	20.3
<b>Total</b>	<b>246,308</b>	<b>202,950</b>	<b>82.4</b>	<b>197</b>	<b>88</b>	<b>44.7</b>	<b>1,537</b>	<b>1,087</b>	<b>70.7</b>	<b>7,949</b>	<b>7,038</b>	<b>88.5</b>	<b>23,952</b>	<b>21,771</b>	<b>90.9</b>	<b>183,001</b>	<b>172,918</b>	<b>94.5</b>

Note: Restraint Use includes shoulder belt only used, lap belt only used, both lap and shoulder belts used, child restraint used, restraint failure, and helmet worn.

## 2017 - Restraints Worn Among Vehicle Drivers and Injured Passengers by Age

Age Group	Total Occupants			Fatalities			A - Suspected Serious			B - Suspected Minor			C - Possible Injury			No Injury		
	Total	Used Restraint	%	Total	Used Restraint	%	Total	Used Restraint	%	Total	Used Restraint	%	Total	Used Restraint	%	Total	Used Restraint	%
0 - 15	2,316	1,960	84.6	6	4	66.7	48	30	62.5	319	263	82.4	1,688	1,463	86.7	246	200	81.3
16 - 20	23,922	22,491	94.0	18	6	33.3	161	102	63.4	965	841	87.2	2,441	2,198	90.0	20,169	19,341	95.9
21 - 24	22,303	20,540	92.1	26	9	34.6	194	137	70.6	880	751	85.3	2,330	2,071	88.9	18,669	17,569	94.1
25 - 64	147,030	136,841	93.1	117	52	44.4	983	689	70.1	4,887	4,333	88.7	14,970	13,656	91.2	124,832	118,084	94.6
65 +	22,176	21,065	95.0	30	17	56.7	149	128	85.9	894	847	94.7	2,505	2,376	94.9	18,473	17,687	95.7
Unknown	28,561	53	0.2	0	0	0.0	2	1	50.0	4	3	75.0	18	7	38.9	612	37	6.0
<b>Total</b>	<b>246,308</b>	<b>202,950</b>	<b>82.4</b>	<b>197</b>	<b>88</b>	<b>44.7</b>	<b>1,537</b>	<b>1,087</b>	<b>70.7</b>	<b>7,949</b>	<b>7,038</b>	<b>88.5</b>	<b>23,952</b>	<b>21,771</b>	<b>90.9</b>	<b>183,001</b>	<b>172,918</b>	<b>94.5</b>

Note: Restraint Use includes shoulder belt only used, lap belt only used, both lap and shoulder belts used, child restraint used, restraint failure, and helmet worn.



## 5-Year Trend - Restraint Use Among Drivers

Restraint Use	2013			2014			2015			2016			2017		
	Drivers	Fatal Drivers	Injured Drivers	Drivers	Fatal Drivers	Injured Drivers	Drivers	Fatal Drivers	Injured Drivers	Drivers	Fatal Drivers	Injured Drivers	Drivers	Fatal Drivers	Injured Drivers
No belts available	485	3	79	435	2	63	584	2	87	340	0	52	241	1	39
Shoulder belt only used	236	0	25	231	0	40	313	0	34	750	1	100	883	1	113
Lap belt only used	336	0	32	333	1	39	411	0	50	281	0	32	248	1	25
Both lap & shoulder belts used	167,972	53	19,363	181,123	51	20,155	184,428	62	21,242	195,277	57	22,816	194,373	55	22,549
No belts used	1,285	29	457	1,160	34	387	1,216	36	422	1,181	42	438	971	28	422
Child restraint used	10	0	1	3	0	0	10	0	1	12	0	1	9	0	1
Child restraint not used, unavailable or improper use	7	0	0	7	0	0	11	0	2	3	0	0	0	0	0
Restraint failure	35	0	6	31	0	4	38	0	4	36	0	8	33	0	9
Restraint use unknown	20,116	25	843	21,436	20	977	21,834	20	1,257	29,419	37	1,162	34,895	34	1,436
Helmet worn	691	23	487	602	14	432	678	28	476	725	24	512	666	15	477
Helmet not worn	281	15	203	296	9	227	329	13	242	487	17	282	310	16	230
Helmet use unknown	69	4	21	104	3	42	120	3	43	98	6	36	78	5	46
Uncoded & errors	10,972	0	18	11,468	0	35	13,111	0	17	7,606	0	16	5,469	0	0
<b>Total</b>	<b>202,495</b>	<b>152</b>	<b>21,535</b>	<b>217,229</b>	<b>134</b>	<b>22,401</b>	<b>223,083</b>	<b>164</b>	<b>23,877</b>	<b>236,215</b>	<b>184</b>	<b>25,455</b>	<b>238,176</b>	<b>156</b>	<b>25,347</b>

## 5-Year Trend - Restraint Use Among Drivers Coded Drinking

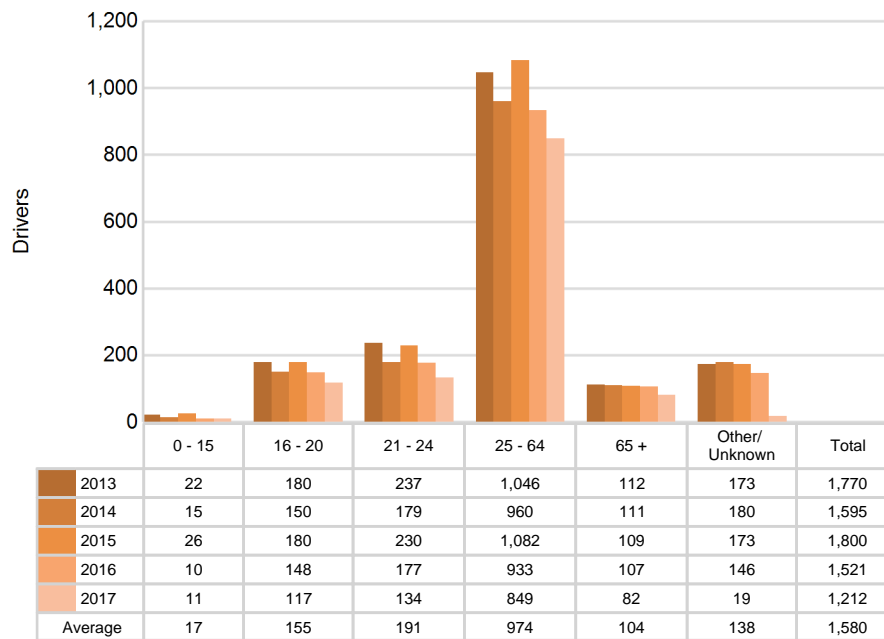
Restraint Use	2013			2014			2015			2016			2017		
	Drivers	Fatal Drivers	Injured Drivers	Drivers	Fatal Drivers	Injured Drivers	Drivers	Fatal Drivers	Injured Drivers	Drivers	Fatal Drivers	Injured Drivers	Drivers	Fatal Drivers	Injured Drivers
No belts available	15	0	9	8	0	1	12	0	4	9	0	4	4	0	0
Shoulder belt only used	8	0	1	7	0	2	7	0	2	15	0	3	7	0	2
Lap belt only used	3	0	1	7	0	2	5	0	2	2	0	1	1	0	0
Both lap & shoulder belts used	2,451	8	556	2,411	5	517	2,434	8	529	2,410	6	600	2,318	13	552
No belts used	182	5	107	164	7	105	170	13	98	172	18	94	120	9	71
Child restraint used	0	0	0	0	0	0	0	0	0	0	0	0	1	0	0
Child restraint not used, unavailable or improper use	0	0	0	0	0	0	0	0	0	0	0	0	0	0	0
Restraint failure	1	0	1	0	0	0	0	0	0	0	0	0	0	0	0
Restraint use unknown	481	3	139	467	1	116	517	7	146	486	11	123	537	10	155
Helmet worn	15	2	10	20	3	15	24	1	19	21	2	18	16	1	14
Helmet not worn	23	2	16	37	1	34	29	6	19	35	5	27	28	3	24
Helmet use unknown	3	0	1	3	0	2	1	0	0	2	1	1	4	0	2
Uncoded & errors	12	0	1	7	0	1	3	0	0	2	0	0	2	0	0
<b>Total</b>	<b>3,194</b>	<b>20</b>	<b>842</b>	<b>3,131</b>	<b>17</b>	<b>795</b>	<b>3,202</b>	<b>35</b>	<b>819</b>	<b>3,154</b>	<b>43</b>	<b>871</b>	<b>3,038</b>	<b>36</b>	<b>820</b>

## 5-Year Trend - Seatbelt Not Used Among Drivers by Age

Age Group	2013			2014			2015			2016			2017		
	Drivers	Fatal Drivers	Injured Drivers	Drivers	Fatal Drivers	Injured Drivers	Drivers	Fatal Drivers	Injured Drivers	Drivers	Fatal Drivers	Injured Drivers	Drivers	Fatal Drivers	Injured Drivers
0 - 15	22	0	2	15	0	3	26	0	5	10	0	1	11	0	2
16 - 20	180	3	76	150	4	50	180	3	74	148	2	71	117	5	52
21 - 24	237	3	109	179	6	63	230	6	81	177	6	79	134	5	58
25 - 64	1,046	22	308	960	20	297	1,082	25	313	933	28	310	849	14	326
65 +	112	4	34	111	6	27	109	4	32	107	6	27	82	5	23
Unknown	173	0	7	180	0	10	173	0	4	146	0	2	19	0	0
<b>Total</b>	<b>1,770</b>	<b>32</b>	<b>536</b>	<b>1,595</b>	<b>36</b>	<b>450</b>	<b>1,800</b>	<b>38</b>	<b>509</b>	<b>1,521</b>	<b>42</b>	<b>490</b>	<b>1,212</b>	<b>29</b>	<b>461</b>

Note: Seatbelt Not Used includes no belts available or no belts used.

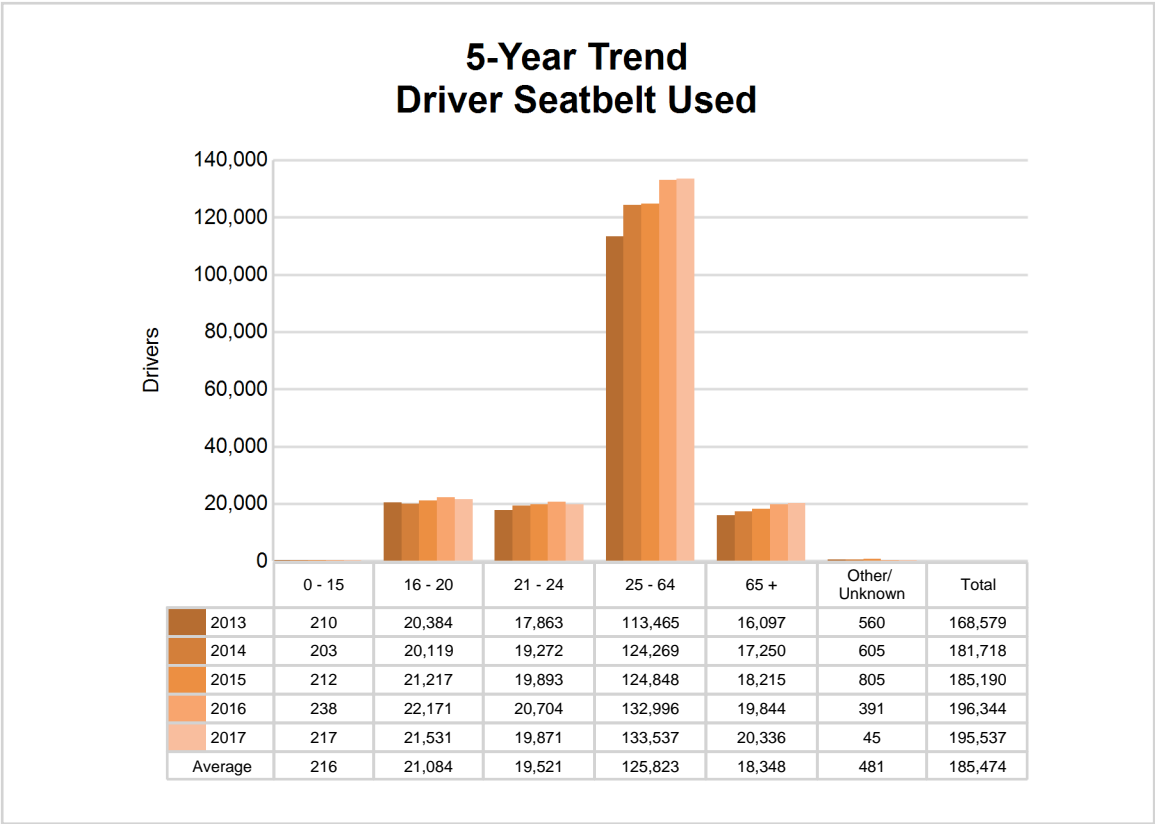
### 5-Year Trend Driver Seatbelt Not Used



5-Year Trend - Seatbelt Used Among Drivers by Age

Age Group	2013			2014			2015			2016			2017		
	Drivers	Fatal Drivers	Injured Drivers	Drivers	Fatal Drivers	Injured Drivers	Drivers	Fatal Drivers	Injured Drivers	Drivers	Fatal Drivers	Injured Drivers	Drivers	Fatal Drivers	Injured Drivers
0 - 15	210	0	8	203	0	19	212	0	23	238	1	16	217	0	17
16 - 20	20,384	4	2,061	20,119	1	2,007	21,217	6	2,148	22,171	3	2,276	21,531	5	2,201
21 - 24	17,863	2	2,163	19,272	4	2,194	19,893	6	2,226	20,704	4	2,456	19,871	4	2,320
25 - 64	113,465	30	13,079	124,269	32	13,885	124,848	32	14,505	132,996	32	15,562	133,537	35	15,517
65 +	16,097	17	2,098	17,250	15	2,118	18,215	18	2,421	19,844	18	2,640	20,336	13	2,638
Unknown	560	0	17	605	0	15	805	0	7	391	0	6	45	0	3
Total	168,579	53	19,426	181,718	52	20,238	185,190	62	21,330	196,344	58	22,956	195,537	57	22,696

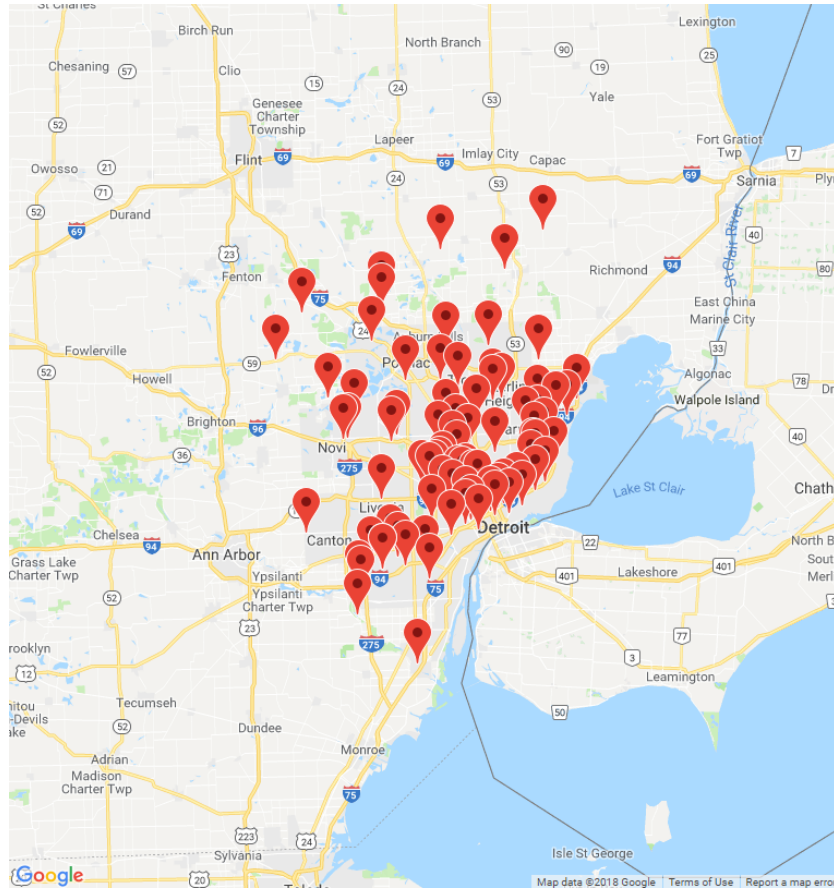
Note: Seatbelt Used includes shoulder belt only used, lap belt only used, both lap and shoulder belts used, and restraint failure.



## MSP District 2 - Metro (continued)

### 5-Year Trend - Drivers in Crashes by Hazardous Action

Hazardous Action	2013		2014		2015		2016		2017	
	Total Drivers in Crashes	Drivers in Fatal Crashes	Total Drivers in Crashes	Drivers in Fatal Crashes	Total Drivers in Crashes	Drivers in Fatal Crashes	Total Drivers in Crashes	Drivers in Fatal Crashes	Total Drivers in Crashes	Drivers in Fatal Crashes
None	97,129	184	103,387	155	108,110	199	111,862	229	111,142	196
Speed too fast	7,802	38	9,630	36	7,679	41	7,823	59	7,535	41
Speed too slow	91	0	72	1	96	2	77	1	48	0
Failed to yield	17,990	28	18,746	12	19,453	27	20,369	23	20,748	17
Disregard traffic control	4,304	12	4,307	14	4,682	24	5,020	22	4,950	13
Drove wrong way	170	0	215	4	240	0	215	2	200	5
Drove left of center	921	8	1,032	14	929	10	970	19	956	16
Improper passing	903	0	1,062	2	1,142	2	1,178	4	1,286	3
Improper lane use	5,295	3	5,697	2	6,512	7	7,200	3	7,531	3
Improper turn	1,843	2	2,023	1	2,350	5	2,378	2	2,490	3
Improper/no signal	218	0	219	0	238	0	177	0	181	0
Improper backing	2,976	0	3,211	3	3,210	1	3,211	0	3,098	0
Unable to stop in assured clear distance	33,485	15	36,625	12	38,099	20	40,955	17	40,407	13
Other	7,387	22	7,937	29	7,722	31	7,849	31	7,618	26
Unknown	11,419	57	12,311	66	11,855	51	15,860	57	20,466	54
Reckless driving	981	23	1,019	20	1,157	26	1,212	27	1,020	28
Careless/negligent driving	4,535	18	4,481	22	5,141	31	5,229	26	4,187	20
Uncoded & errors	5,046	6	5,255	6	4,468	2	4,630	3	4,313	8
<b>Total</b>	<b>202,495</b>	<b>416</b>	<b>217,229</b>	<b>399</b>	<b>223,083</b>	<b>479</b>	<b>236,215</b>	<b>525</b>	<b>238,176</b>	<b>446</b>



The picture above represents all 2017 alcohol-involved fatal crashes in District 2.

In 2017, there were 3,106 alcohol-involved crashes in District 2:

84	K - Fatal Crashes
207	A - Suspected Serious Injury Crashes
452	B - Suspected Minor Injury Crashes
534	C - Possible Injury Crashes
1,829	O - Property Damage Only/No Injury Crashes

### Office of Highway Safety Planning

---

Physical Address:

7150 Harris Drive  
Dimondale, Michigan 48821

Mailing Address:

P.O. Box 30634  
Lansing, Michigan 48909

Phone: (517) 284-3112

Fax: (517) 284-3151

Find us on the web:

[MichiganTrafficCrashFacts.org](http://MichiganTrafficCrashFacts.org)

