

MTCF

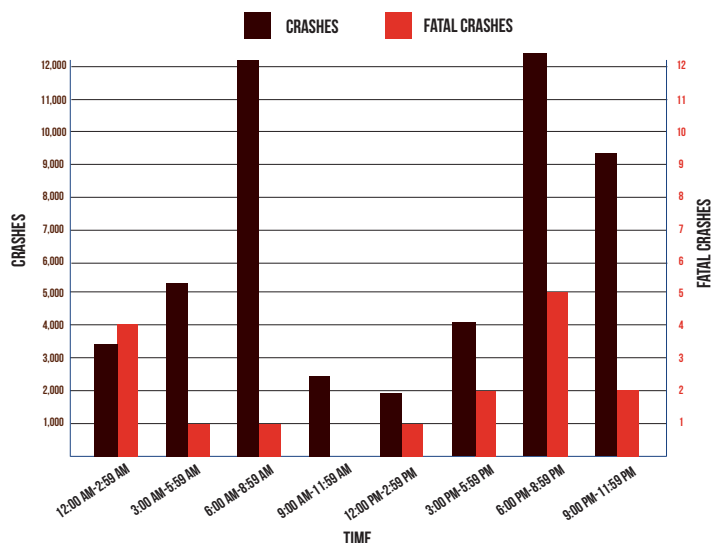
Michigan Traffic Crash Facts

DEER

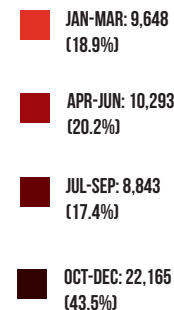
2017

Deer crashes include situations where a deer is a contributing factor, but does not necessarily come in contact with a traffic unit.

MOTOR VEHICLE-DEER CRASHES BY TIME OF DAY



MOTOR VEHICLE-DEER CRASHES BY TIME OF YEAR



Michigan had 50,949 (16.2% of the total crashes) motor vehicle-deer crashes.

Passenger cars and station wagons represented 79.2 percent (40,562) of the vehicles involved.

As a result of vehicle-deer crashes, 1,254 people were injured and 17 people were killed. Two (11.8%) of those killed were occupants in passenger vehicles, 13 (76.5%) killed were motorcyclists, and two (11.8%) were ORV/ATV riders.

Motor vehicle-deer involved crashes were highest during the 7:00-7:59 AM time period (5,238).

The top 10 counties experiencing vehicle-deer crashes were: Oakland 1,765; Kent 1,572; Jackson 1,310; Lapeer 1,185; Ottawa 1,122; Montcalm 1,075; Isabella 1,057; Huron 1,055; Genesee 1,049; and Allegan 1,044.

The highest number of vehicle-deer crashes occurred during November (9,136).

Of the motor vehicle-deer crashes, 22,165 (43.5%) occurred during the fourth quarter of the year.

Michigan Department of State Police
Office of Highway Safety Planning - Traffic Safety Programs (517) 284-3112
WWW.MICHIGAN.GOV/OHSP