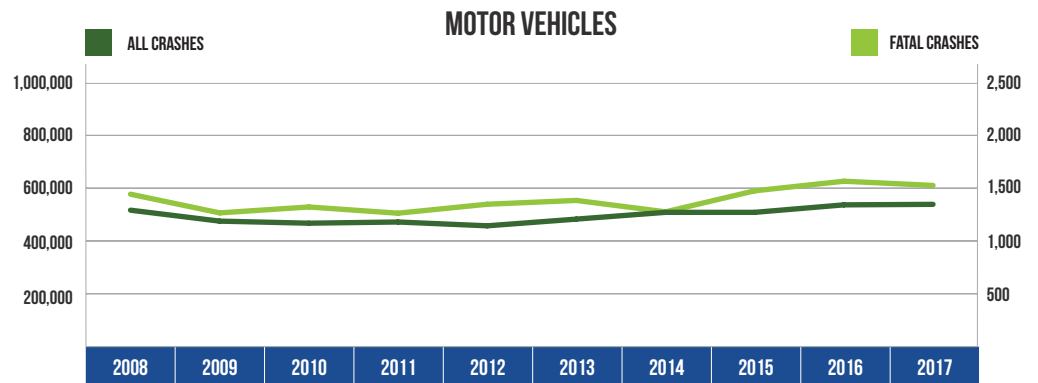


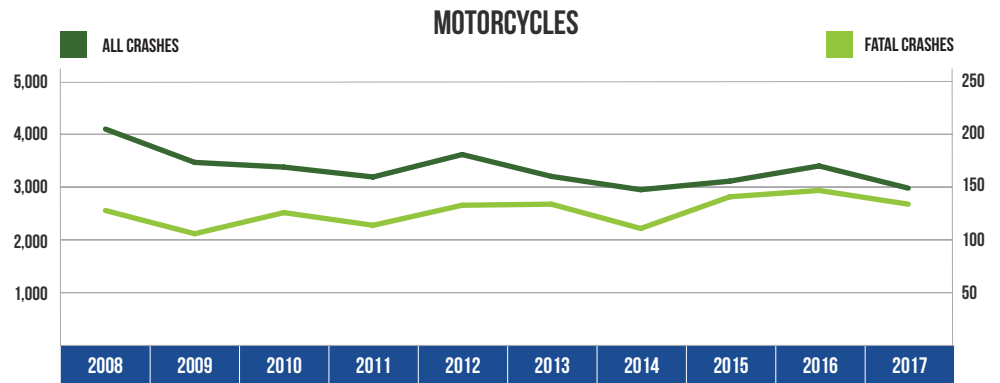
10 YEAR TRENDS-STATEWIDE (CONTINUED)

MOTOR VEHICLES		
Year	All Crashes	Fatal Crashes
2008	518,240	1,447
2009	476,801	1,270
2010	468,968	1,326
2011	473,501	1,267
2012	459,030	1,352
2013	484,446	1,388
2014	510,086	1,280
2015	510,074	1,479
2016	538,412	1,570
2017	540,387	1,530



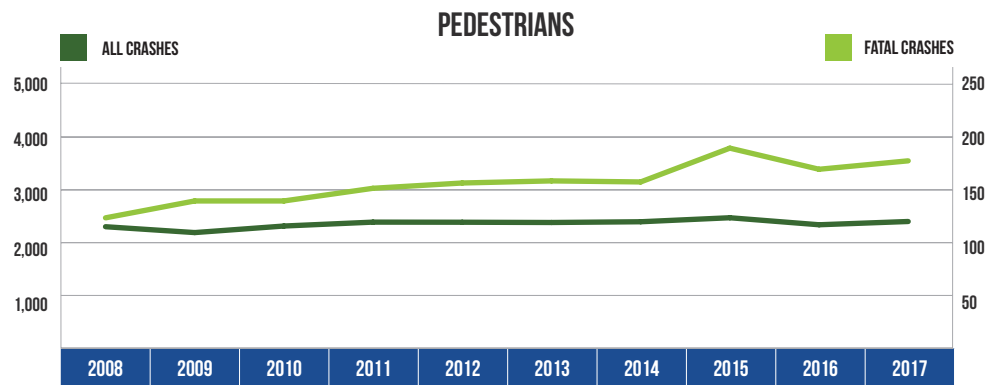
There were 540,387 motor vehicles involved in all crashes in 2017, up 4.3 percent from 2008. There were 1,530 motor vehicles involved in fatal crashes in 2017, up 5.7 percent from 2008.

MOTORCYCLES		
Year	All Crashes	Fatal Crashes
2008	4,082	127
2009	3,451	105
2010	3,362	125
2011	3,175	113
2012	3,600	132
2013	3,186	133
2014	2,934	110
2015	3,096	140
2016	3,384	146
2017	2,964	133



There were 2,964 motorcycles involved in crashes in 2017, a 27.4 percent decrease from 2008. There were 133 motorcycles involved in fatal crashes in 2017, up 4.3 percent from 2008.

PEDESTRIANS		
Year	All Crashes	Fatal Crashes
2008	2,312	124
2009	2,201	140
2010	2,325	140
2011	2,399	152
2012	2,397	157
2013	2,392	159
2014	2,406	158
2015	2,482	190
2016	2,349	170
2017	2,411	178



There were 2,411 pedestrians involved in crashes in 2017, up 4.3 percent from 2008. There were 178 pedestrians involved in fatal crashes in 2017, up 43.5 percent from 2008.