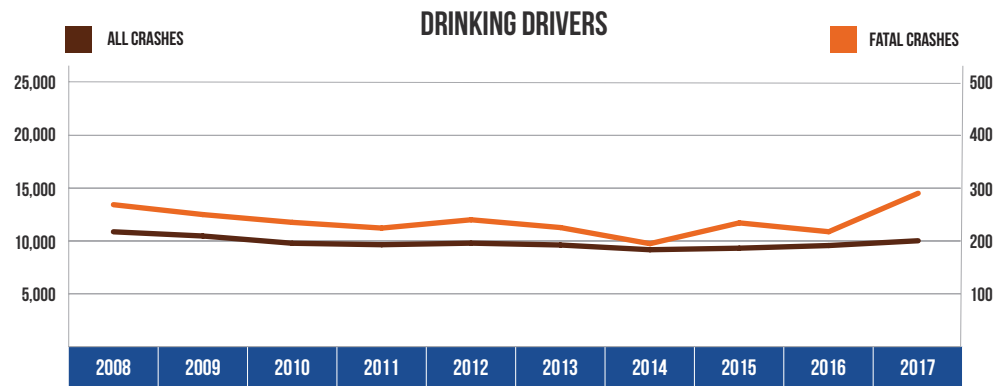


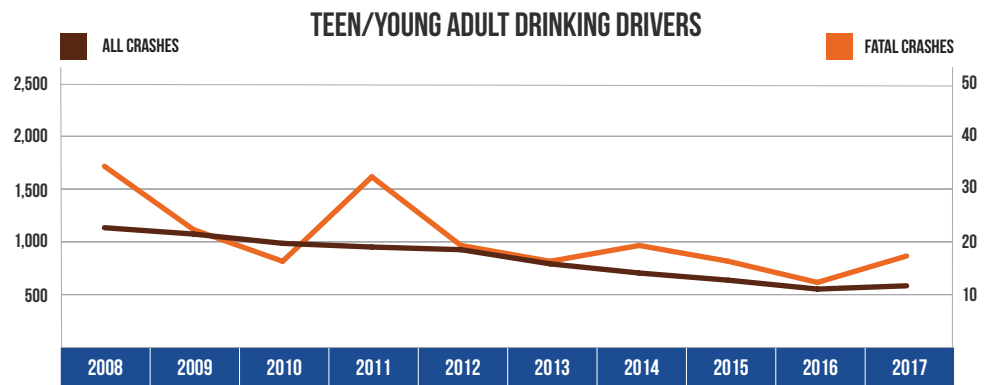
10 YEAR TRENDS-STATEWIDE (CONTINUED)

DRINKING DRIVERS		
Year	All Crashes	Fatal Crashes
2008	10,948	271
2009	10,542	252
2010	9,843	237
2011	9,701	226
2012	9,853	242
2013	9,673	227
2014	9,218	196
2015	9,368	236
2016	9,623	219
2017	10,085	293



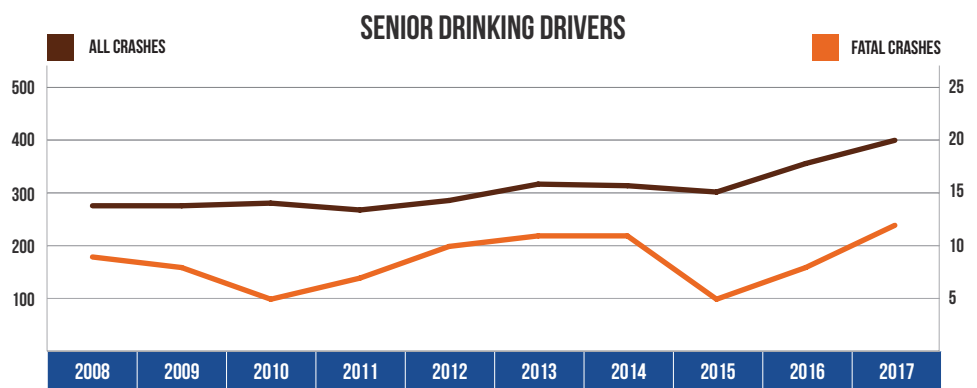
Drinking driver involvement in all crashes decreased by 7.9 percent from 2008. Drinking driver involvement in fatal crashes increased by 8.1 percent from 2008.

TEEN/YOUNG ADULT DRINKING DRIVERS (AGE 16-20)		
Year	All Crashes	Fatal Crashes
2008	1,118	34
2009	1,058	22
2010	970	16
2011	935	32
2012	910	19
2013	776	16
2014	689	19
2015	621	16
2016	537	12
2017	568	17



The number of teen/young adult drinking drivers (age 16-20) in all crashes decreased by 49.2 percent, and their involvement in fatal crashes decreased by 50.0 percent from 2008.

SENIOR DRINKING DRIVERS (AGE 65 & OVER)		
Year	All Crashes	Fatal Crashes
2008	277	9
2009	277	8
2010	282	5
2011	269	7
2012	287	10
2013	318	11
2014	315	11
2015	303	5
2016	357	8
2017	401	12



The number of senior drinking drivers (age 65 and over) in all crashes increased by 44.8 percent from 2008. Their involvement in fatal crashes increased by 33.3 percent from 2008.