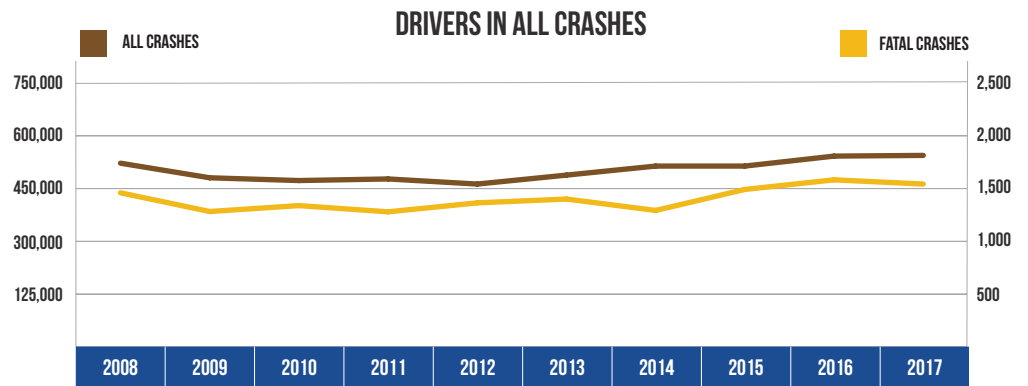


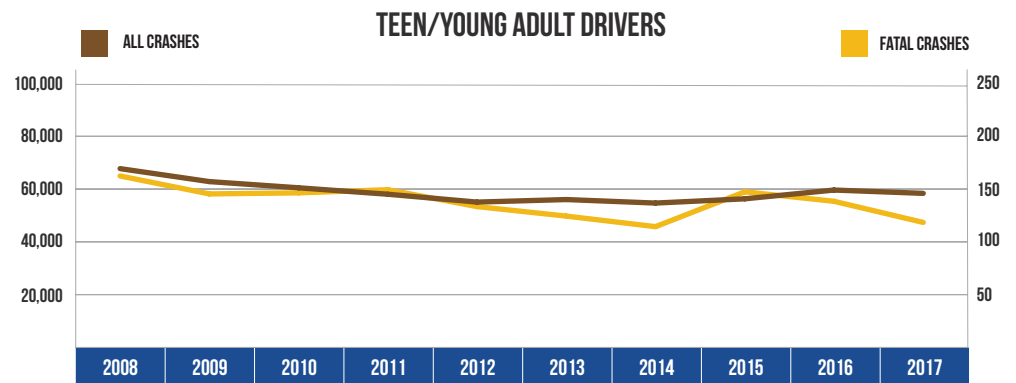
## 10 YEAR TRENDS-STATEWIDE (CONTINUED)

ALL CRASHES		
Year	All Crashes	Fatal Crashes
2008	518,240	1,447
2009	476,801	1,270
2010	468,968	1,326
2011	473,501	1,267
2012	459,030	1,352
2013	484,446	1,388
2014	510,086	1,280
2015	510,074	1,479
2016	538,412	1,570
2017	540,387	1,530



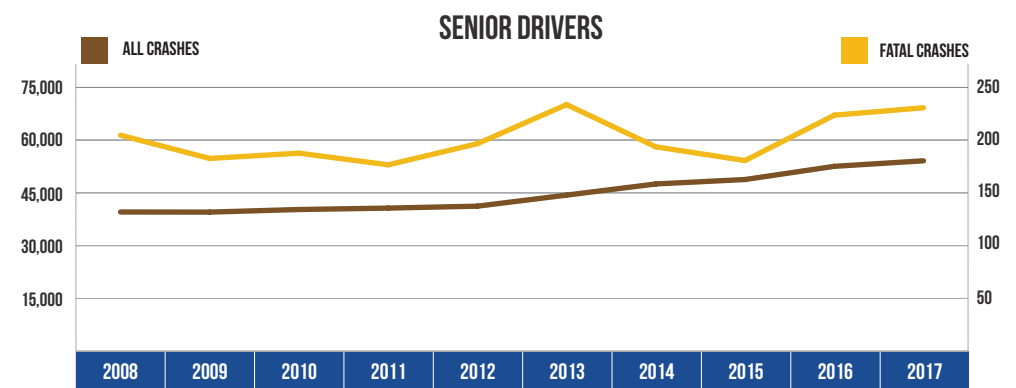
The number of drivers involved in all crashes increased 4.3 percent over the 10-year period. The number of drivers involved in fatal crashes increased 5.7 percent over the 10-year period.

TEEN/YOUNG ADULT DRIVERS (AGE 16-20)		
Year	All Crashes	Fatal Crashes
2008	67,982	163
2009	63,069	146
2010	60,721	147
2011	58,279	150
2012	55,307	134
2013	56,264	125
2014	54,935	115
2015	56,544	148
2016	59,865	139
2017	58,607	119



Teen/young adult drivers (age 16-20) represented 6.5 percent of the licensed drivers in 2017. The number of teen/young adult drivers in all crashes has decreased by 13.8 percent since 2008. Their involvement in fatal crashes has decreased 27.0 percent during the same time period.

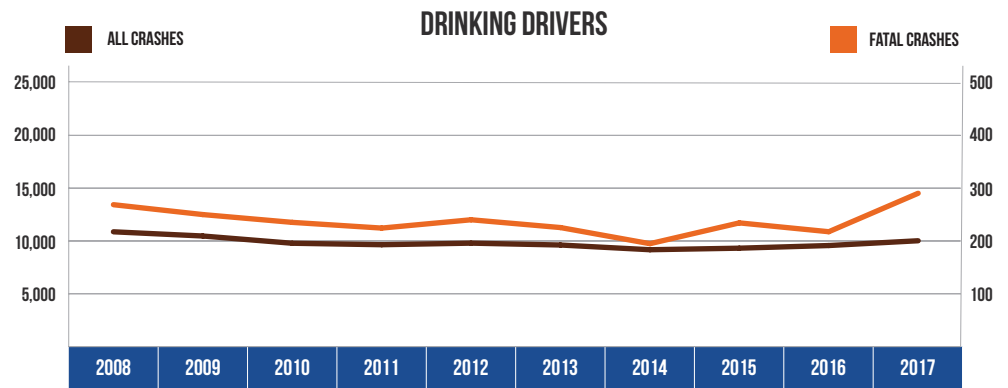
SENIOR DRIVERS (AGE 65 & OVER)		
Year	All Crashes	Fatal Crashes
2008	39,388	204
2009	39,357	182
2010	40,096	187
2011	40,495	176
2012	41,047	196
2013	44,183	233
2014	47,356	193
2015	48,615	180
2016	52,362	223
2017	53,934	230



Senior drivers (age 65 and over) represented 20.5 percent of the licensed drivers in 2017. The number of drivers age 65 and over in all crashes has increased 36.9 percent since 2008. Senior driver involvement in fatal crashes increased 12.7 percent during the same time period.

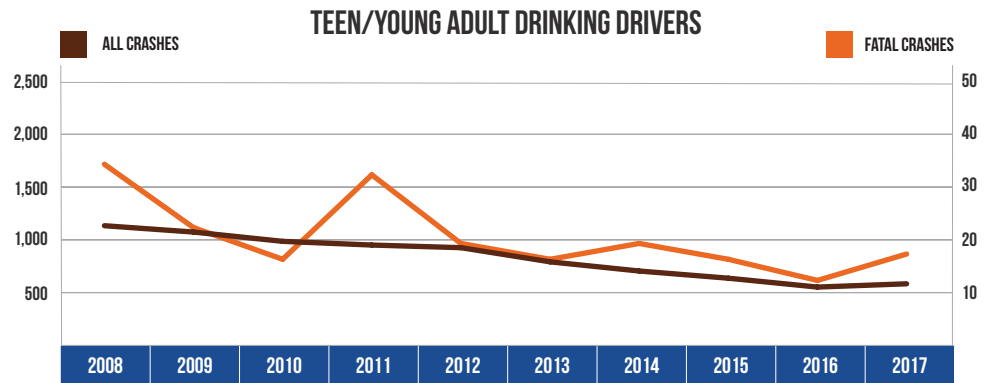
## 10 YEAR TRENDS-STATEWIDE (CONTINUED)

DRINKING DRIVERS		
Year	All Crashes	Fatal Crashes
2008	10,948	271
2009	10,542	252
2010	9,843	237
2011	9,701	226
2012	9,853	242
2013	9,673	227
2014	9,218	196
2015	9,368	236
2016	9,623	219
2017	10,085	293



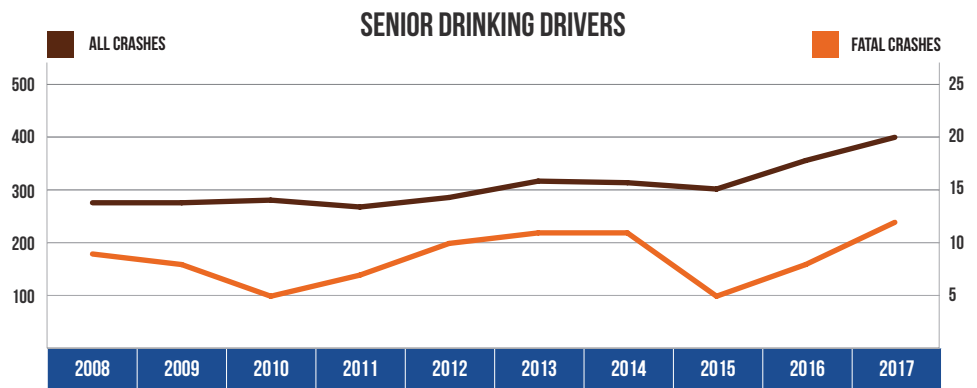
Drinking driver involvement in all crashes decreased by 7.9 percent from 2008. Drinking driver involvement in fatal crashes increased by 8.1 percent from 2008.

TEEN/YOUNG ADULT DRINKING DRIVERS (AGE 16-20)		
Year	All Crashes	Fatal Crashes
2008	1,118	34
2009	1,058	22
2010	970	16
2011	935	32
2012	910	19
2013	776	16
2014	689	19
2015	621	16
2016	537	12
2017	568	17



The number of teen/young adult drinking drivers (age 16-20) in all crashes decreased by 49.2 percent, and their involvement in fatal crashes decreased by 50.0 percent from 2008.

SENIOR DRINKING DRIVERS (AGE 65 & OVER)		
Year	All Crashes	Fatal Crashes
2008	277	9
2009	277	8
2010	282	5
2011	269	7
2012	287	10
2013	318	11
2014	315	11
2015	303	5
2016	357	8
2017	401	12



The number of senior drinking drivers (age 65 and over) in all crashes increased by 44.8 percent from 2008. Their involvement in fatal crashes increased by 33.3 percent from 2008.