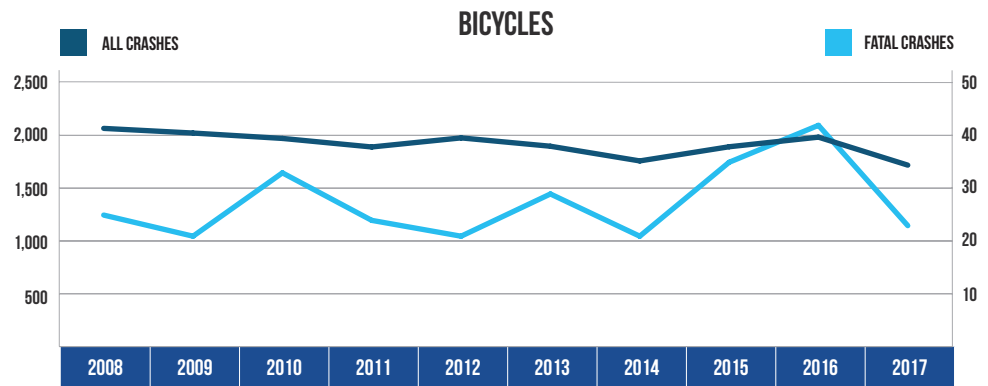


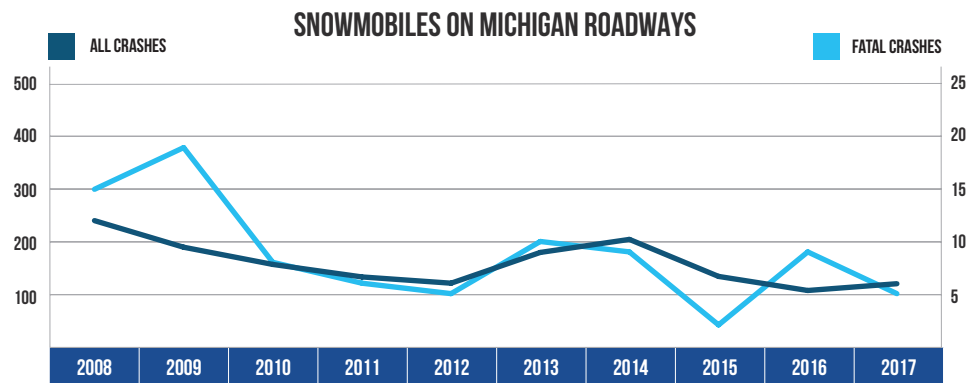
## 10 YEAR TRENDS-STATEWIDE (CONTINUED)

BICYCLES		
Year	All Crashes	Fatal Crashes
2008	2,071	25
2009	2,027	21
2010	1,976	33
2011	1,895	24
2012	1,981	21
2013	1,902	29
2014	1,763	21
2015	1,897	35
2016	1,988	42
2017	1,723	23



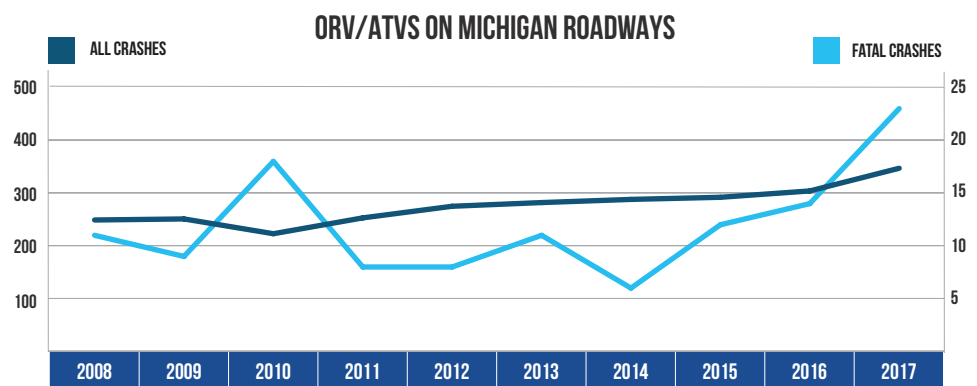
There were 1,723 bicycles involved in crashes in 2017, down 16.8 percent from 2008. There were 23 bicycles involved in fatal crashes in 2017, down 8.0 percent from 2008.

SNOWMOBILES ON MICHIGAN ROADWAYS		
Year	All Crashes	Fatal Crashes
2008	240	15
2009	189	19
2010	156	8
2011	132	6
2012	120	5
2013	179	10
2014	204	9
2015	133	2
2016	106	9
2017	119	5



There were 119 snowmobiles in crashes on roadways in 2017, down 50.4 percent from 2008. There were 5 snowmobiles in fatal crashes, down 66.7 percent from 2008.

ORV/ATVS ON MICHIGAN ROADWAYS		
Year	All Crashes	Fatal Crashes
2008	249	11
2009	251	9
2010	223	18
2011	253	8
2012	275	8
2013	282	11
2014	288	6
2015	292	12
2016	304	14
2017	347	23



There were 347 ORV/ATVs in crashes on roadways in 2017, up 39.4 percent from 2008. There were 23 ORV/ATVs in fatal crashes, up 109.1 percent from 2008.