



2016

MTCF
Michigan Traffic
Crash Facts

Michigan Traffic Crash Facts

Reporting Criteria

Please pay particular attention to the wording when interpreting the three levels of data gathered for this report.

Crash

The Crash Level analyzes data related to crash events and returns one result per crash.

Examples: Time, weather, and location.

Units

The Units Level analyzes the experience of the units in the crash and returns one result per vehicle, driver, pedestrian, bicyclist, or train.

Examples: Vehicle type, driver condition, and unit events.

People

The People Level analyzes the experience of the people involved in the crash and returns one result per occupant/person/party.

Examples: Age, injury severity, and seat belt or helmet use.

KABCO Injury Indicator:

K = Killed

A = Suspected Serious Injury

B = Suspected Minor Injury

C = Possible Injury

O = No Injury

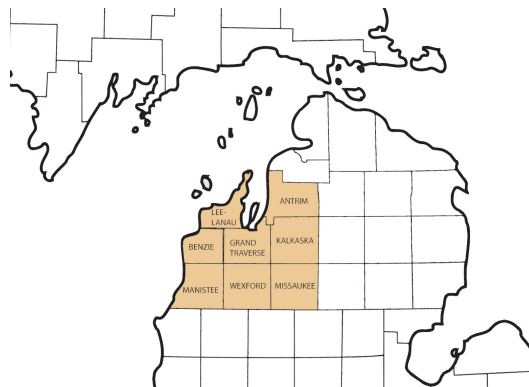
Property Damage Only (PDO)



Traffic Safety Network Traverse Bay Area

2016 Traffic Crash Data & 2012-2016 5-Year Trends

Traffic Safety Network Traverse Bay Area is comprised of Antrim, Benzie, Grand Traverse, Kalkaska, Leelanau, Manistee, Missaukee, and Wexford counties. Trend tables for this report are based on those counties.



Sources:

The crashes in this report occurred on public roadways in Michigan and resulted in injuries, fatalities, or property damage (with \$1,000 as a reporting threshold). The information was gathered from Michigan Traffic Crash Report Forms (UD-10) submitted by local police departments, sheriff's offices, and the Michigan State Police. Other related information was obtained from the departments of Transportation, State, and Community Health.

This page left intentionally blank

TSN Traverse Bay Area Experience

In 2016:

There were 12,750 drivers involved in 8,660 motor vehicle crashes in Traffic Safety Network Traverse Bay Area. Of those crashes, 45 were classified as fatal, resulting in 51 fatalities. An additional 1,736 persons were injured.

Traffic Safety Network Traverse Bay Area experienced the highest number of motor vehicle crashes (1,037) in December, the highest number of fatal crashes (8) and the highest number of persons killed (12) in August.

Michigan driver statistics indicate 6.6 percent of licensed drivers in Traffic Safety Network Traverse Bay Area were age 16-20, and 11.2 percent of drivers in crashes were also in that age group.

2016 - Crashes and Injuries by Month

Month	Crashes				Persons	
	Total	Fatal	Injury	Property Damage Only (PDO)	Fatalities	Injuries
January	815	3	81	731	3	110
February	723	2	90	631	2	119
March	561	2	72	487	2	108
April	577	2	90	485	2	126
May	584	3	98	483	3	139
June	661	4	110	547	4	161
July	766	2	164	600	3	220
August	644	8	123	513	12	181
September	670	7	112	551	7	159
October	753	4	100	649	4	123
November	869	5	85	779	6	116
December	1,037	3	128	906	3	174
Total	8,660	45	1,253	7,362	51	1,736

2016 - Driver Statistics

Age Group	Statewide			Driver Rates	
	2016 Population	Licensed Drivers	Drivers in Crashes	Per 10k Population	Per 10k Licensed
0 - 15	1,923,244	49,678	30	0.2	6.0
16 - 20	672,666	471,135	1,431	21.3	30.4
21 - 24	570,792	470,489	1,028	18.0	21.8
25 - 64	5,149,843	4,748,323	7,888	15.3	16.6
65 +	1,611,755	1,437,067	1,776	11.0	12.4
Unknown	0	0	597	--	--
Total	9,928,300	7,176,692	12,750	12.8	17.8

2016 - Vehicles in Crashes

Vehicle Type	Motor Vehicles		Fatal Crashes		Injury Crashes	PDO Crashes
	Number of Vehicles	% of Total	Number	% of Total	Number	Number
Passenger car, SUV, van	9,610	75.4	43	57.3	1,516	8,051
Motor home	158	1.2	0	0.0	19	139
Pickup truck	2,259	17.7	12	16.0	322	1,925
Small truck under 10,000 lbs. GVWR	105	0.8	0	0.0	18	87
Motorcycle	92	0.7	3	4.0	68	21
Moped / goped	13	0.1	0	0.0	13	0
Go-cart / golf cart	0	0.0	0	0.0	0	0
Snowmobile	25	0.2	2	2.7	14	9
Off-Road Vehicle - ORV / All-Terrain Vehicle - ATV	19	0.1	2	2.7	17	0
Other	49	0.4	0	0.0	7	42
Truck/bus over 10,000 lbs.	267	2.1	13	17.3	40	214
Unknown	153	1.2	0	0.0	10	143
Total	12,750	100.0	75	100.0	2,044	10,631

Traffic Safety Network Traverse Bay Area (continued)

5-Year Trend - Crashes by Month

Month	2012		2013		2014		2015		2016	
	Total Crashes	Fatal Crashes	Total Crashes	Fatal Crashes	Total Crashes	Fatal Crashes	Total Crashes	Fatal Crashes	Total Crashes	Fatal Crashes
January	890	2	898	5	1,133	0	865	4	815	3
February	722	3	726	3	861	2	883	4	723	2
March	495	2	642	0	742	1	528	2	561	2
April	394	1	601	2	574	2	529	2	577	2
May	530	4	555	0	544	0	536	2	584	3
June	673	5	677	2	680	1	718	1	661	4
July	632	4	668	5	637	4	711	4	766	2
August	629	3	670	3	639	5	655	6	644	8
September	627	2	643	8	600	4	625	3	670	7
October	873	2	765	1	772	1	790	1	753	4
November	1,011	3	1,214	6	1,209	2	979	5	869	5
December	846	5	1,079	3	817	4	704	3	1,037	3
Total	8,322	36	9,138	38	9,208	26	8,523	37	8,660	45

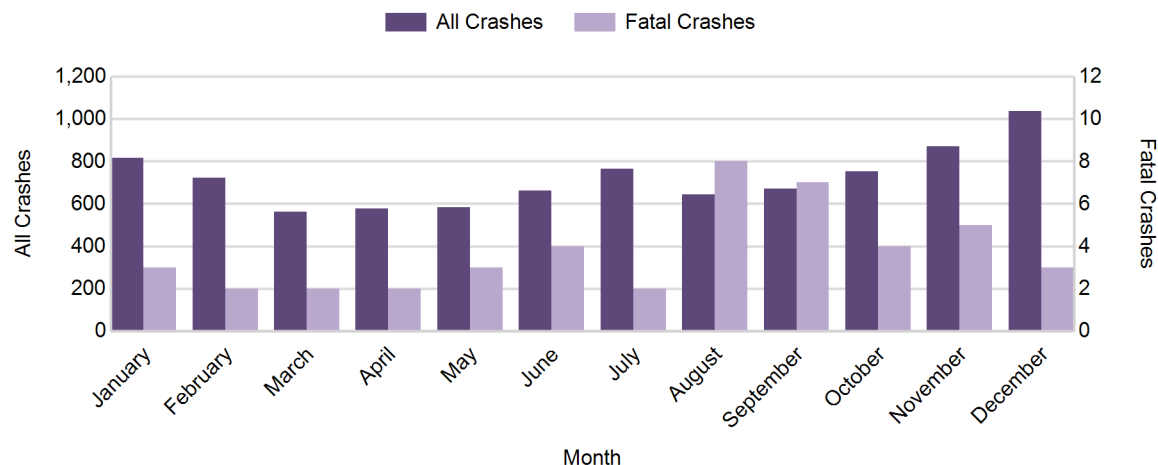
Note: † Indicates that the highest number of total crashes reported in the 5-year period occurred in the same month

5-Year Trend - Crashes by Day of Week

Day	2012		2013		2014		2015		2016	
	Total Crashes	Fatal Crashes	Total Crashes	Fatal Crashes	Total Crashes	Fatal Crashes	Total Crashes	Fatal Crashes	Total Crashes	Fatal Crashes
Monday	1,151	3	1,337	7	1,285	3	1,133	2	1,199	7
Tuesday	1,133	5	1,448	5	1,394	4	1,212	5	1,231	8
Wednesday	1,161	6	1,383	3	1,424	1	1,321	11	1,320	4
Thursday	1,252	2	1,419	3	1,330	3	1,350	6	1,323	7
Friday	1,538	10	1,441	10	1,648	4	1,365	6	1,493	7
Saturday	1,121	5	1,180	6	1,148	8	1,160	4	1,123	5
Sunday	966	5	930	4	979	3	982	3	971	7
Total	8,322	36	9,138	38	9,208	26	8,523	37	8,660	45

Note: † Indicates that the highest number of total crashes reported in the 5-year period occurred on the same day of the week

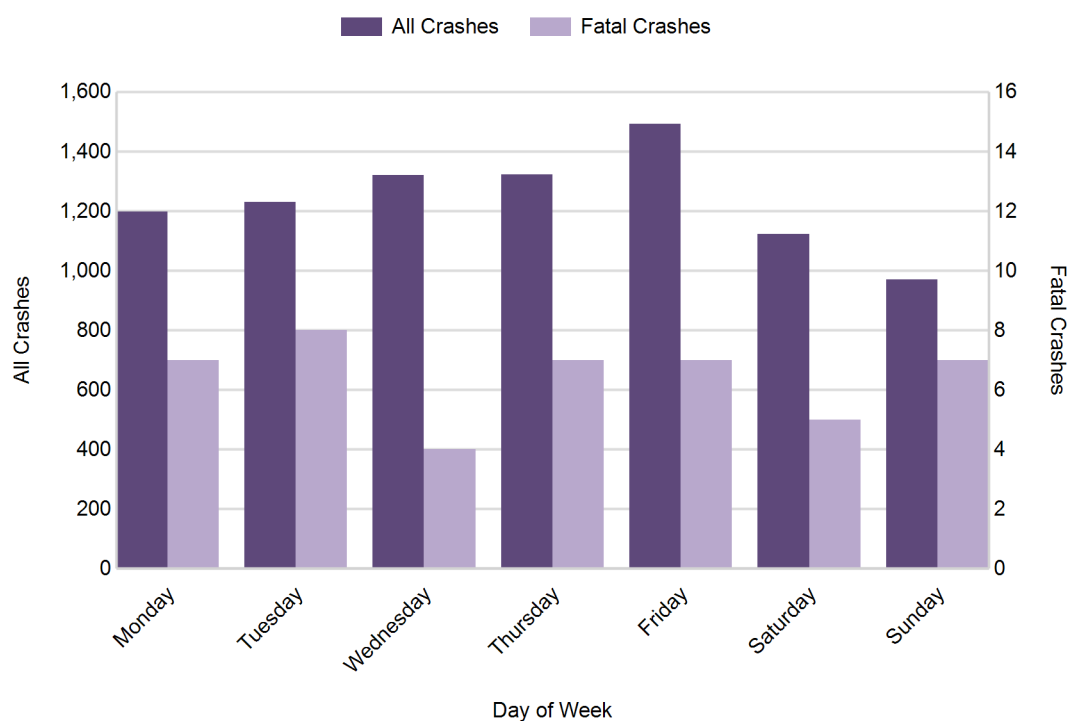
2016 Crashes by Month



2016 - Crashes by Day of Week

Day	All Crashes		Fatal Crashes		Injury Crashes			PDO Crashes
	Number	% of Total	Number	% of Fatal	A	B	C	Number
Monday	1,199	13.8	7	15.6	20	50	102	1,020
Tuesday	1,231	14.2	8	17.8	15	39	103	1,066
Wednesday	1,320	15.2	4	8.9	20	51	119	1,126
Thursday	1,323	15.3	7	15.6	17	45	108	1,146
Friday	1,493	17.2	7	15.6	26	73	117	1,270
Saturday	1,123	13.0	5	11.1	31	64	78	945
Sunday	971	11.2	7	15.6	26	64	85	789
Total	8,660	100.0	45	100.0	155	386	712	7,362

2016 Day of Week and Severity

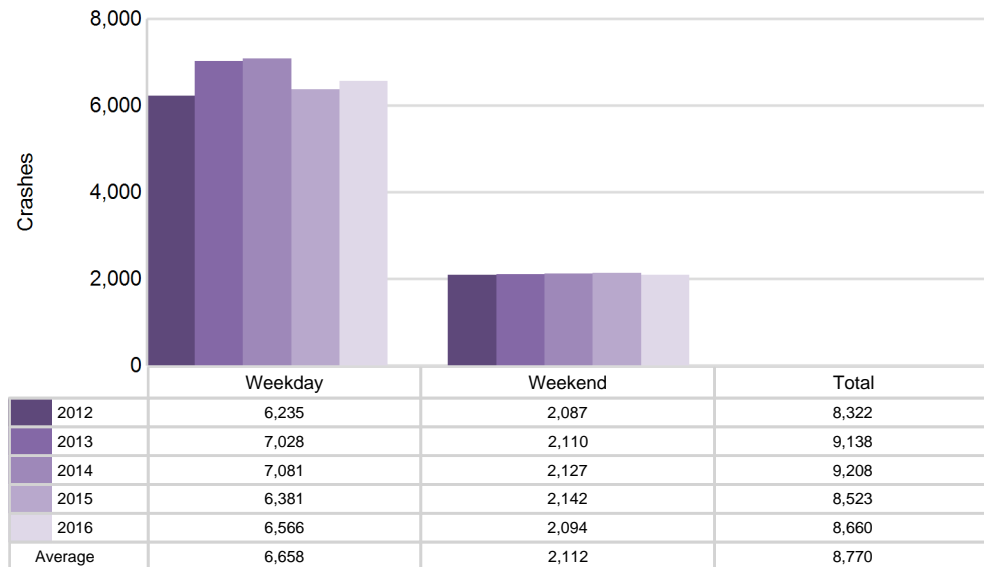


Traffic Safety Network Traverse Bay Area (continued)

5-Year Trend - Crashes by Weekday and Weekend

Portion of Week	2012		2013		2014		2015		2016	
	Total Crashes	Fatal Crashes	Total Crashes	Fatal Crashes	Total Crashes	Fatal Crashes	Total Crashes	Fatal Crashes	Total Crashes	Fatal Crashes
Weekday	6,235	26	7,028	28	7,081	15	6,381	30	6,566	33
Weekend	2,087	10	2,110	10	2,127	11	2,142	7	2,094	12
Total	8,322	36	9,138	38	9,208	26	8,523	37	8,660	45

5-Year Crash Trends by Weekday (Monday - Friday) and Weekend (Saturday & Sunday)



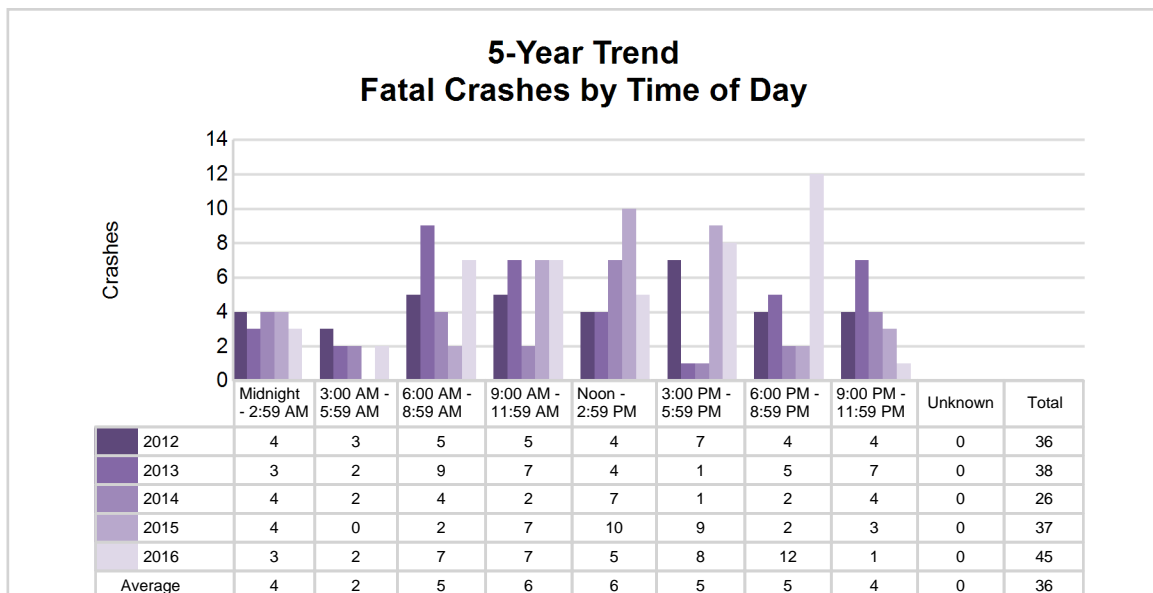
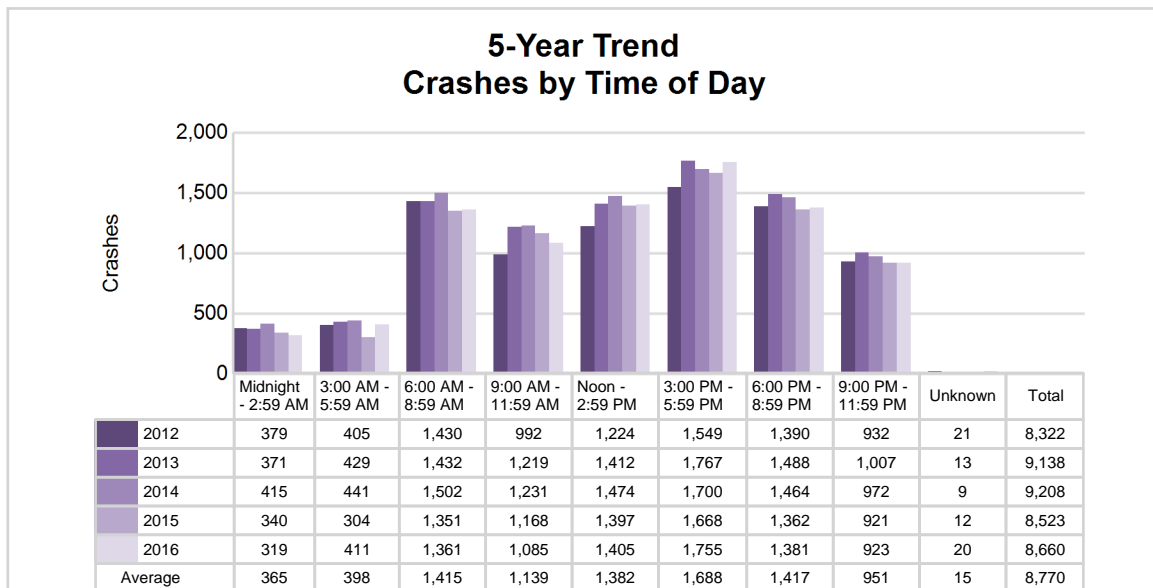
Traffic Safety Network Traverse Bay Area (continued)

5

5-Year Trend - Crashes by Time of Day

Time of Day	2012		2013		2014		2015		2016	
	Total Crashes	Fatal Crashes	Total Crashes	Fatal Crashes	Total Crashes	Fatal Crashes	Total Crashes	Fatal Crashes	Total Crashes	Fatal Crashes
Midnight - 2:59 AM	379	4	371	3	415	4	340	4	319	3
3:00 AM - 5:59 AM	405	3	429	2	441	2	304	0	411	2
6:00 AM - 8:59 AM	1,430	5	1,432	9	1,502	4	1,351	2	1,361	7
9:00 AM - 11:59 AM	992	5	1,219	7	1,231	2	1,168	7	1,085	7
Noon - 2:59 PM	1,224	4	1,412	4	1,474	7	1,397	10	1,405	5
3:00 PM - 5:59 PM	1,549 †	7	1,767 †	1	1,700 †	1	1,668 †	9	1,755 †	8
6:00 PM - 8:59 PM	1,390	4	1,488	5	1,464	2	1,362	2	1,381	12
9:00 PM - 11:59 PM	932	4	1,007	7	972	4	921	3	923	1
Unknown	21	0	13	0	9	0	12	0	20	0
Total	8,322	36	9,138	38	9,208	26	8,523	37	8,660	45

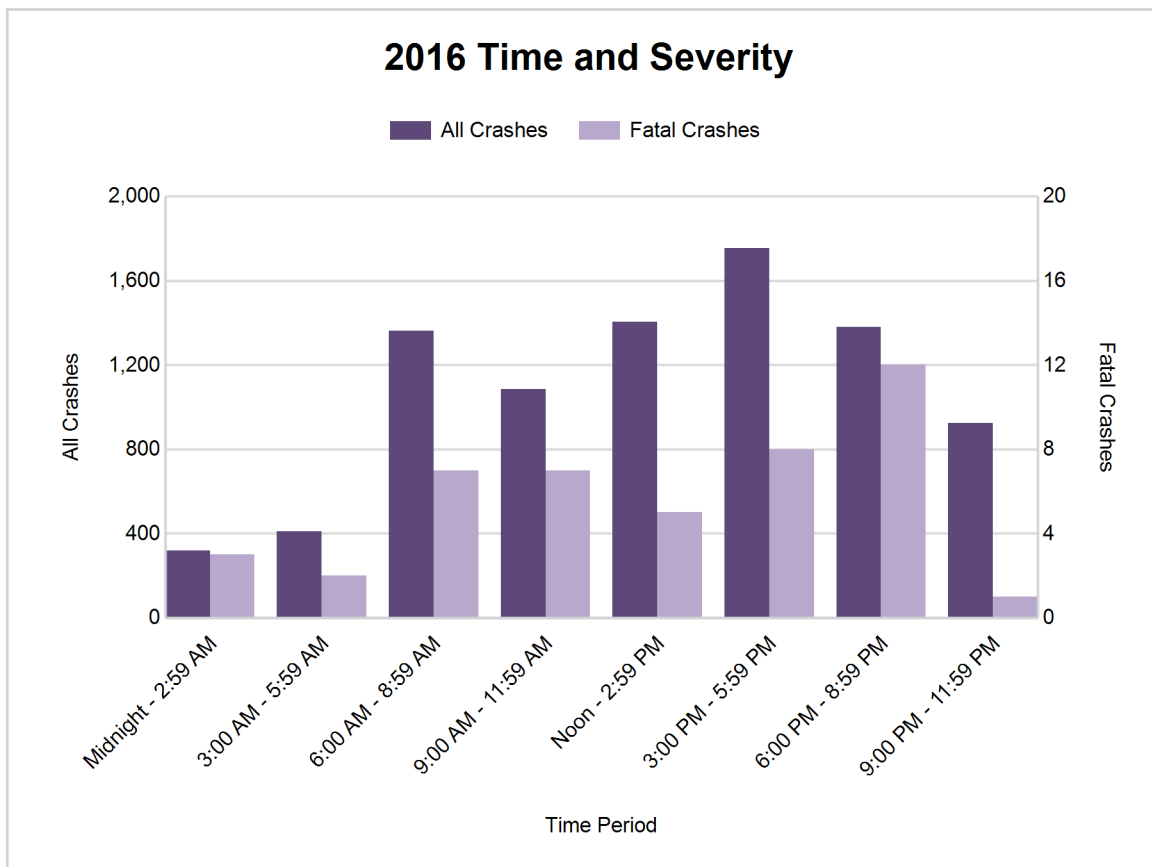
Note: † Indicates that the highest number of total crashes reported in the 5-year period occurred in the same time period



Traffic Safety Network Traverse Bay Area (continued)

2016 - Time and Severity

Time of Day	All Crashes		Fatal Crashes		Injury Crashes			PDO Crashes
	Number	% of Total	Number	% of Fatal	A	B	C	Number
Midnight - 2:59 AM	319	3.7	3	6.7	6	19	19	272
3:00 AM - 5:59 AM	411	4.7	2	4.4	7	15	21	366
6:00 AM - 8:59 AM	1,361	15.7	7	15.6	20	33	79	1,222
9:00 AM - 11:59 AM	1,085	12.5	7	15.6	25	43	91	919
Noon - 2:59 PM	1,405	16.2	5	11.1	30	76	156	1,138
3:00 PM - 5:59 PM	1,755	20.3	8	17.8	26	88	187	1,446
6:00 PM - 8:59 PM	1,381	15.9	12	26.7	27	61	102	1,179
9:00 PM - 11:59 PM	923	10.7	1	2.2	14	50	56	802
Unknown	20	0.2	0	0.0	0	1	1	18
Total	8,660	100.0	45	100.0	155	386	712	7,362



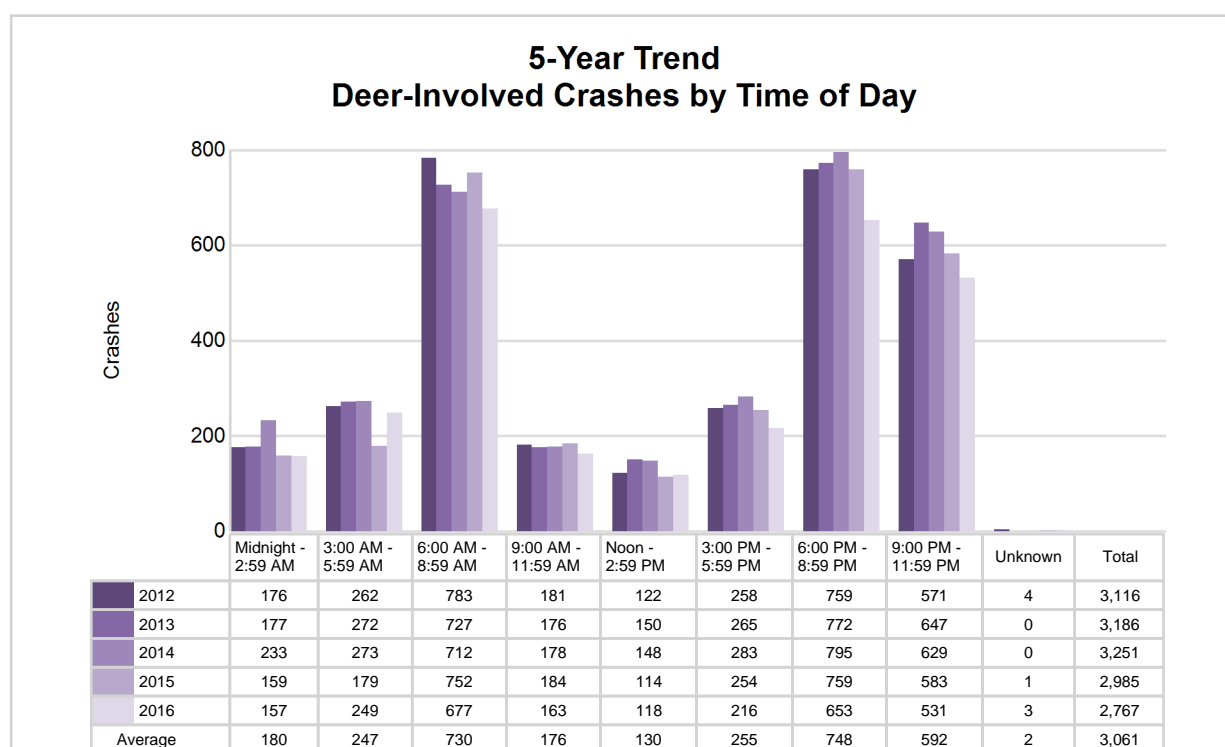
Traffic Safety Network Traverse Bay Area (continued)

7

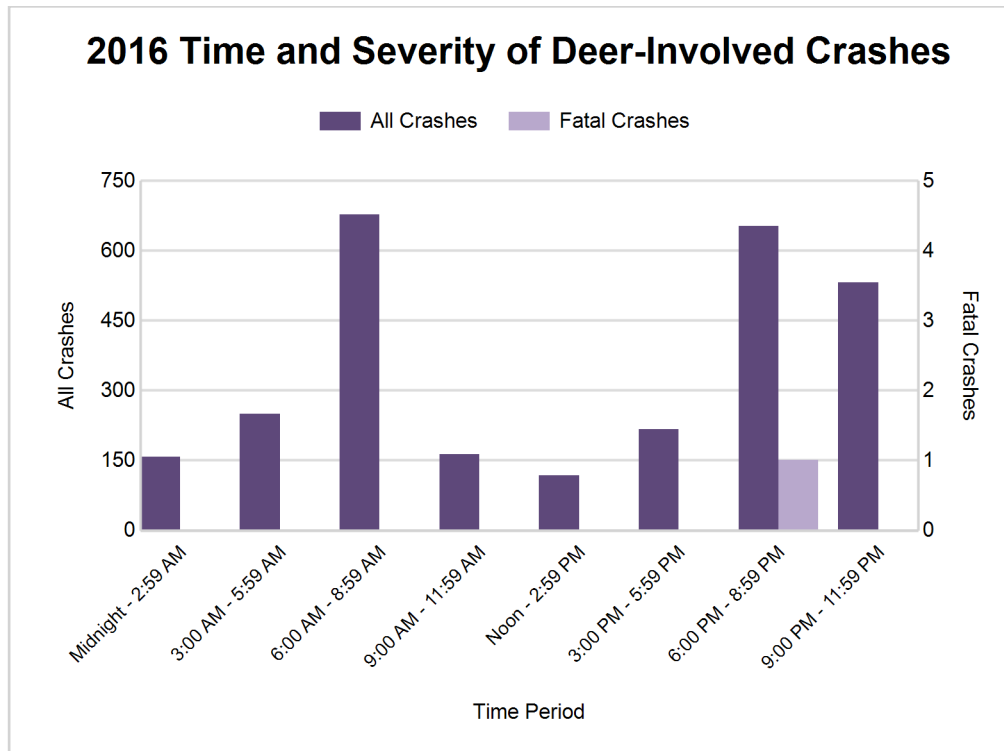
5-Year Trend - Deer-Involved Crashes by Time of Day

Time of Day	2012		2013		2014		2015		2016	
	Total Crashes	Fatal Crashes	Total Crashes	Fatal Crashes	Total Crashes	Fatal Crashes	Total Crashes	Fatal Crashes	Total Crashes	Fatal Crashes
Midnight - 2:59 AM	176	0	177	0	233	0	159	0	157	0
3:00 AM - 5:59 AM	262	0	272	0	273	0	179	0	249	0
6:00 AM - 8:59 AM	783	0	727	0	712	0	752	0	677	0
9:00 AM - 11:59 AM	181	0	176	0	178	0	184	0	163	0
Noon - 2:59 PM	122	0	150	0	148	0	114	0	118	0
3:00 PM - 5:59 PM	258	0	265	0	283	0	254	0	216	0
6:00 PM - 8:59 PM	759	0	772	0	795	0	759	0	653	1
9:00 PM - 11:59 PM	571	0	647	0	629	0	583	0	531	0
Unknown	4	0	0	0	0	0	1	0	3	0
Total	3,116	0	3,186	0	3,251	0	2,985	0	2,767	1

Note: † Indicates that the highest number of total crashes reported in the 5-year period occurred in the same time period



Traffic Safety Network Traverse Bay Area (continued)



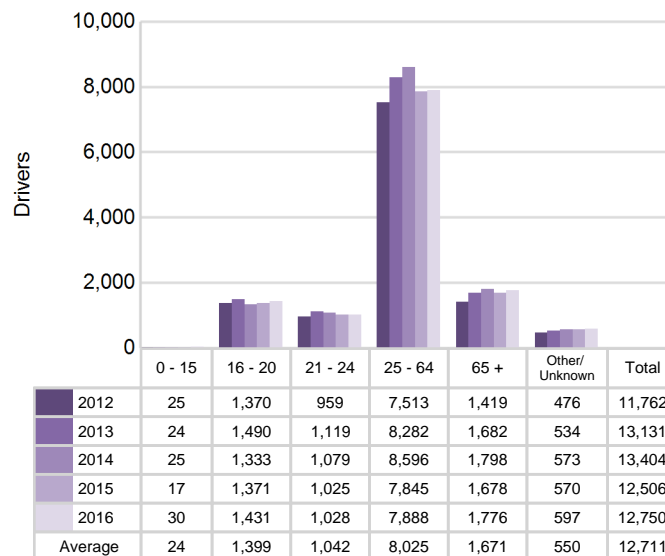
2016 - Reported Motor Vehicle Crashes by County

County	Crashes											Persons	
	Total	Fatal	Injury	Property Damage	Inter-state	US Route	State Route	Local Street	Alcohol-Involved	Drug-Involved	Deer-Involved	Fatalities	Injuries
Antrim	792	5	135	652	0	184	155	442	34	10	292	5	184
Benzie	571	1	60	510	0	144	99	327	19	6	288	2	77
Grand Traverse	3,518	13	529	2,976	0	1,029	430	2,059	127	31	628	15	724
Kalkaska	403	4	90	309	0	103	95	198	29	10	74	4	134
Leelanau	665	4	103	558	0	0	320	344	50	5	287	7	140
Manistee	962	3	103	856	0	255	170	534	30	5	521	3	150
Missaukee	592	5	55	532	0	0	201	390	15	6	363	5	85
Wexford	1,157	10	178	969	0	352	330	472	52	13	314	10	242
Total	8,660	45	1,253	7,362	0	2,067	1,800	4,766	356	86	2,767	51	1,736

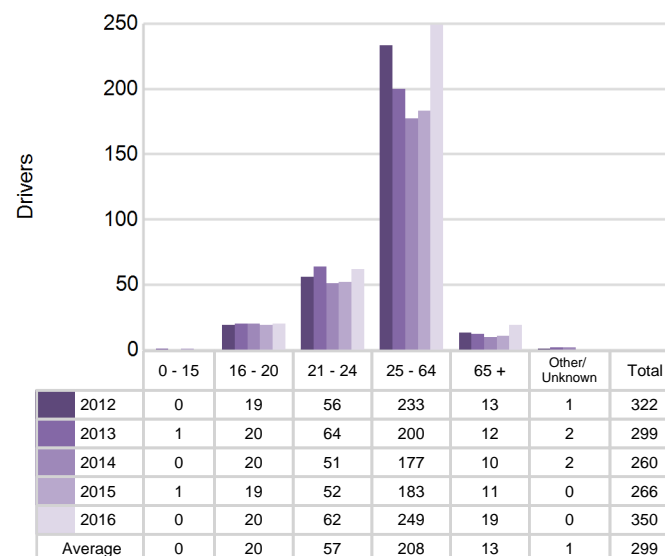
5-Year Trend - Drivers in Crashes Coded Drinking by Driver Age

Driver Age	2012		2013		2014		2015		2016	
	Total Drivers in Crashes	Total Drivers Coded Drinking	Total Drivers in Crashes	Total Drivers Coded Drinking	Total Drivers in Crashes	Total Drivers Coded Drinking	Total Drivers in Crashes	Total Drivers Coded Drinking	Total Drivers in Crashes	Total Drivers Coded Drinking
0 - 15	25	0	24	1	25	0	17	1	30	0
16 - 20	1,370	19	1,490	20	1,333	20	1,371	19	1,431	20
21 - 24	959	56	1,119	64	1,079	51	1,025	52	1,028	62
25 - 64	7,513	233	8,282	200	8,596	177	7,845	183	7,888	249
65 +	1,419	13	1,682	12	1,798	10	1,678	11	1,776	19
Unknown	476	1	534	2	573	2	570	0	597	0
Total	11,762	322	13,131	299	13,404	260	12,506	266	12,750	350

**5-Year Trend
Total Drivers in Crashes by Age**



**5-Year Trend
Total Drivers Coded Drinking by Age**



Traffic Safety Network Traverse Bay Area (continued)

2016 - Bodily Alcohol Concentration (BAC) Results Among All Vehicle Drivers in Alcohol-Involved Crashes by Age

Age Group	Drivers				BAC Result Range for Drivers Coded Drinking				
	Total Drivers in Alcohol-Involved Crashes	Total Drivers Tested in all Crashes	Total Drivers Coded Drinking, Tested	Total Drivers Coded Drinking	BAC = 0.00	BAC 0.01 g/dL to 0.07 g/dL	BAC 0.08 g/dL to 0.16 g/dL	BAC 0.17 g/dL and Above	BAC Not Reported
0 - 15	0	0	0	0	0	0	0	0	0
16 - 20	28	34	16	20	2	7	5	1	5
21 - 24	69	69	56	62	1	4	18	15	24
25 - 64	314	310	207	249	3	36	71	52	87
65 +	29	38	18	19	0	6	7	3	3
Unknown	22	1	0	0	0	0	0	0	0
Total	462	452	297	350	6	53	101	71	119

Notes: BAC measured in grams (g) per deciliter (dL).

BAC may not be reported if drivers are not tested or if the results are not available immediately (as in the case of a blood test).

A driver may be coded by the officer as drinking even though no test is administered.

Alcohol-Involved Crashes

In 2016, there were 462 drivers in alcohol-involved crashes; 350 (75.8%) of those drivers were coded as had-been-drinking by the officer on the crash form.

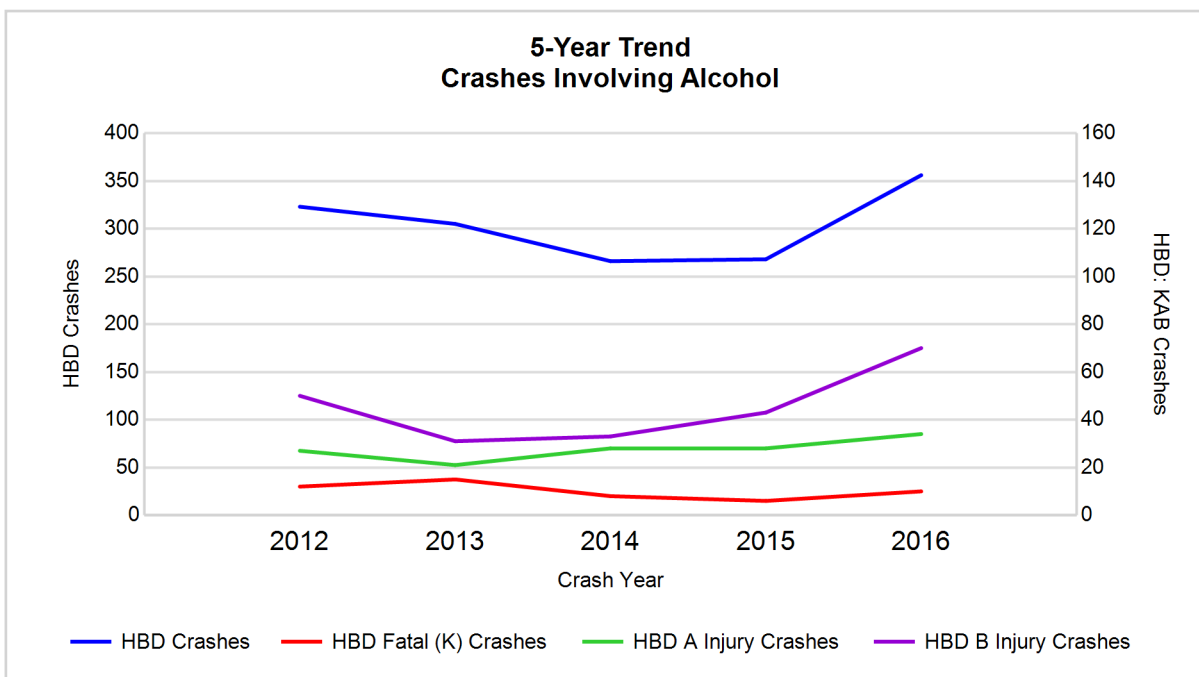
- 172 (49.1%) of the 350 drivers had a blood alcohol concentration (BAC) of 0.08 g/dL (grams per deciliter) or greater, and 71 (41.3%) of the 172 drivers had a BAC at or above 0.17 g/dL.
- 297 (84.9%) of the 350 drivers were coded as had-been-drinking and were tested for alcohol consumption.

5-Year Trend - Crashes Involving Alcohol

Year	All Crashes	HBD Crashes	% HBD	Fatal Crashes	HBD Fatal Crashes	% HBD	A Injury Crashes	HBD A Injury Crashes	% HBD	B Injury Crashes	HBD B Injury Crashes	% HBD
2012	8,322	323	3.9	36	12	33.3	162	27	16.7	337	50	14.8
2013	9,138	305	3.3	38	15	39.5	146	21	14.4	314	31	9.9
2014	9,208	266	2.9	26	8	30.8	140	28	20.0	280	33	11.8
2015	8,523	268	3.1	37	6	16.2	123	28	22.8	308	43	14.0
2016	8,660	356**	4.1**	45**	10	22.2	155	34**	21.9	386**	70**	18.1**

Note: * Indicates that the most recent year is the lowest number or percentage reported in the 5-year period in that column

** Indicates that the most recent year is the highest number or percentage reported in the 5-year period in that column



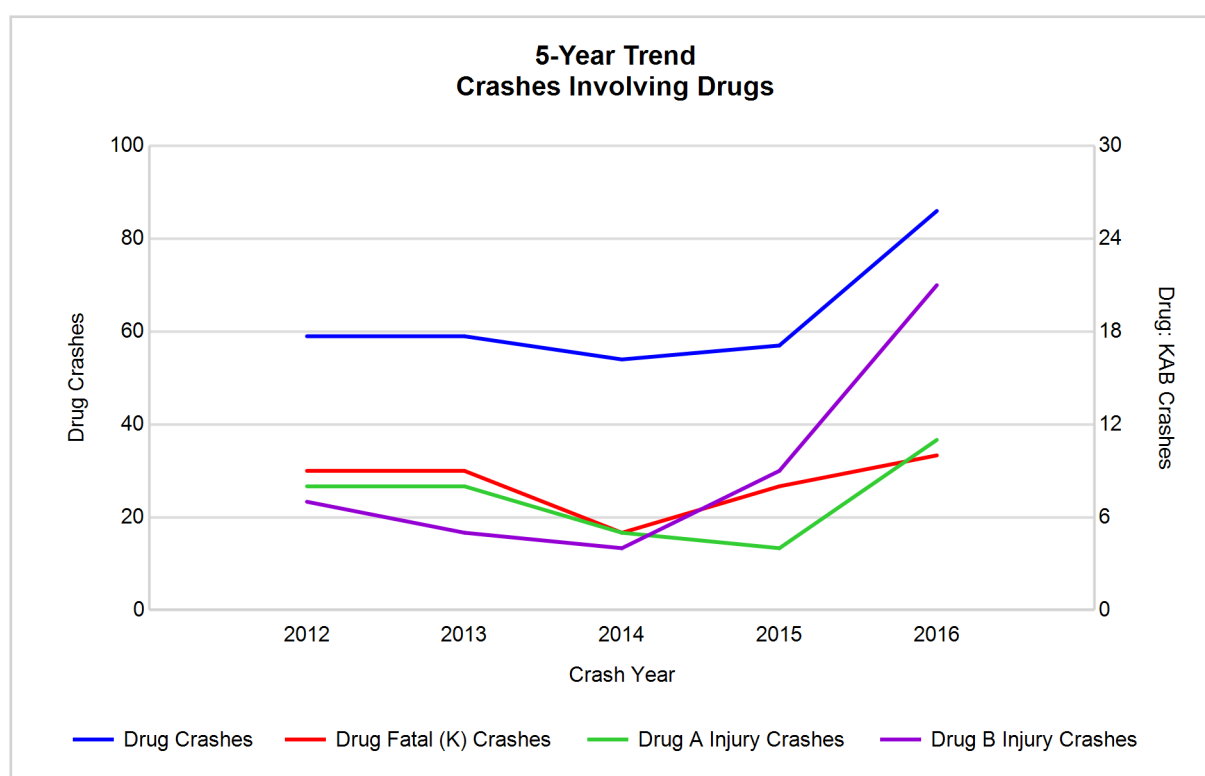
Note: Had-Been-Drinking (HBD)

5-Year Trend - Crashes Involving Drugs

Year	All Crashes	Drug Crashes	% Drug	Fatal Crashes	Drug Fatal Crashes	% Drug	A Injury Crashes	Drug A Injury Crashes	% Drug	B Injury Crashes	Drug B Injury Crashes	% Drug
2012	8,322	59	0.7	36	9	25.0	162	8	4.9	337	7	2.1
2013	9,138	59	0.6	38	9	23.7	146	8	5.5	314	5	1.6
2014	9,208	54	0.6	26	5	19.2	140	5	3.6	280	4	1.4
2015	8,523	57	0.7	37	8	21.6	123	4	3.3	308	9	2.9
2016	8,660	86**	1.0**	45**	10**	22.2	155	11**	7.1**	386**	21**	5.4**

Note: * Indicates that the most recent year is the lowest number or percentage reported in the 5-year period in that column

** Indicates that the most recent year is the highest number or percentage reported in the 5-year period in that column



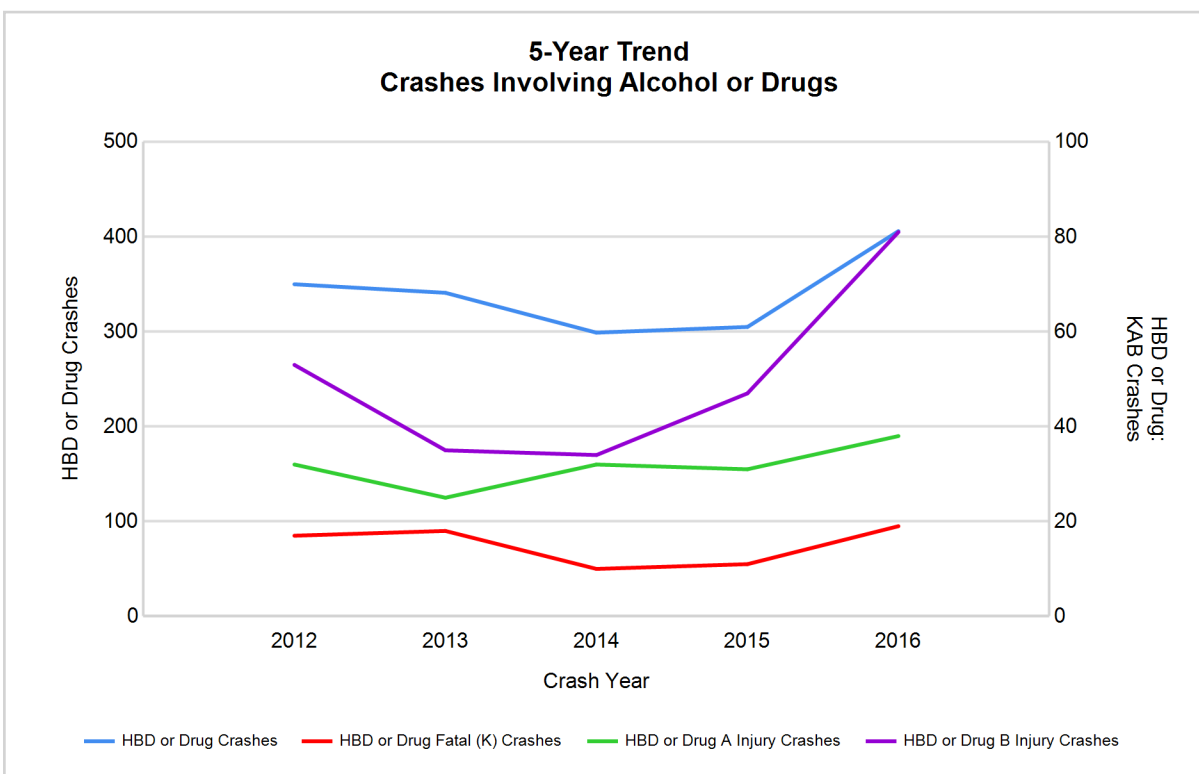
Traffic Safety Network Traverse Bay Area (continued)

5-Year Trend - Crashes Involving Alcohol or Drugs

Year	All Crashes	HBD or Drug Crashes	% HBD or Drug	Fatal Crashes	HBD or Drug Fatal Crashes	% HBD or Drug	A Injury Crashes	HBD or Drug A Injury Crashes	% HBD or Drug	B Injury Crashes	HBD or Drug B Injury Crashes	% HBD or Drug
2012	8,322	350	4.2	36	17	47.2	162	32	19.8	337	53	15.7
2013	9,138	341	3.7	38	18	47.4	146	25	17.1	314	35	11.1
2014	9,208	299	3.2	26	10	38.5	140	32	22.9	280	34	12.1
2015	8,523	305	3.6	37	11	29.7	123	31	25.2	308	47	15.3
2016	8,660	406**	4.7**	45**	19**	42.2	155	38**	24.5	386**	81**	21.0**

Note: * Indicates that the most recent year is the lowest number or percentage reported in the 5-year period in that column

** Indicates that the most recent year is the highest number or percentage reported in the 5-year period in that column



Note: Had-Been-Drinking (HBD)

Traffic Safety Network Traverse Bay Area (continued)

13

2016 - Restraints Worn Among Vehicle Drivers and Injured Passengers by Vehicle Type

Vehicle Type	Total Occupants			Fatalities			A - Suspected Serious			B - Suspected Minor			C - Possible Injury			No Injury		
	Total	Used Restraint	%	Total	Used Restraint	%	Total	Used Restraint	%	Total	Used Restraint	%	Total	Used Restraint	%	Total	Used Restraint	%
Passenger car, SUV, van	9,972	9,352	93.8	31	18	58.1	143	105	73.4	328	289	88.1	795	756	95.1	8,335	8,157	97.9
Motor home	164	154	93.9	0	0	0.0	3	3	100.0	3	3	100.0	11	11	100.0	139	137	98.6
Pickup truck	2,329	2,168	93.1	5	4	80.0	18	6	33.3	80	65	81.3	127	122	96.1	2,010	1,969	98.0
Small truck under 10,000 lbs. GVWR	107	96	89.7	0	0	0.0	1	1	100.0	4	4	100.0	7	7	100.0	84	82	97.6
Motorcycle	103	69	67.0	4	1	25.0	13	9	69.2	42	29	69.0	20	14	70.0	22	16	72.7
Moped / goped	13	5	38.5	0	0	0.0	3	0	0.0	6	3	50.0	4	2	50.0	0	0	0.0
Go-cart / golf cart	0	0	0.0	0	0	0.0	0	0	0.0	0	0	0.0	0	0	0.0	0	0	0.0
Snowmobile	25	21	84.0	2	1	50.0	5	4	80.0	6	5	83.3	3	3	100.0	8	8	100.0
Off-Road Vehicle - ORV / All-Terrain Vehicle - ATV	27	18	66.7	2	0	0.0	7	4	57.1	6	5	83.3	10	8	80.0	2	1	50.0
Other	49	31	63.3	0	0	0.0	1	1	100.0	1	1	100.0	2	1	50.0	37	28	75.7
Truck/bus over 10,000 lbs.	273	248	90.8	0	0	0.0	1	1	100.0	5	2	40.0	13	8	61.5	244	237	97.1
Unknown	153	3	2.0	0	0	0.0	0	0	0.0	0	0	0.0	1	1	100.0	3	2	66.7
Total	13,215	12,165	92.1	44	24	54.5	195	134	68.7	481	406	84.4	993	933	94.0	10,884	10,637	97.7

Note: Restraint Use includes shoulder belt only used, lap belt only used, both lap and shoulder belts used, child restraint used, restraint failure, and helmet worn.

2016 - Restraints Worn Among Vehicle Drivers and Injured Passengers by Age

Age Group	Total Occupants			Fatalities			A - Suspected Serious			B - Suspected Minor			C - Possible Injury			No Injury		
	Total	Used Restraint	%	Total	Used Restraint	%	Total	Used Restraint	%	Total	Used Restraint	%	Total	Used Restraint	%	Total	Used Restraint	%
0 - 15	139	116	83.5	1	0	0.0	15	11	73.3	32	26	81.3	74	63	85.1	17	16	94.1
16 - 20	1,494	1,440	96.4	4	3	75.0	29	16	55.2	63	56	88.9	111	103	92.8	1,278	1,254	98.1
21 - 24	1,064	1,023	96.1	3	1	33.3	23	18	78.3	49	40	81.6	71	66	93.0	916	896	97.8
25 - 64	8,085	7,796	96.4	21	9	42.9	101	66	65.3	275	231	84.0	592	562	94.9	7,068	6,911	97.8
65 +	1,834	1,787	97.4	15	11	73.3	26	23	88.5	61	53	86.9	145	139	95.9	1,582	1,557	98.4
Unknown	599	3	0.5	0	0	0.0	1	0	0.0	1	0	0.0	0	0	0.0	23	3	13.0
Total	13,215	12,165	92.1	44	24	54.5	195	134	68.7	481	406	84.4	993	933	94.0	10,884	10,637	97.7

Note: Restraint Use includes shoulder belt only used, lap belt only used, both lap and shoulder belts used, child restraint used, restraint failure, and helmet worn.

Traffic Safety Network Traverse Bay Area (continued)

5-Year Trend - Restraint Use Among Drivers

Restraint Use	2012			2013			2014			2015			2016		
	Drivers	Fatal Drivers	Injured Drivers	Drivers	Fatal Drivers	Injured Drivers	Drivers	Fatal Drivers	Injured Drivers	Drivers	Fatal Drivers	Injured Drivers	Drivers	Fatal Drivers	Injured Drivers
No belts available	100	0	13	59	1	11	118	0	12	74	1	15	51	0	9
Shoulder belt only used	5	0	1	6	0	2	25	0	2	36	0	9	39	0	3
Lap belt only used	61	0	5	40	0	7	68	0	4	54	0	1	50	0	6
Both lap & shoulder belts used	10,710	15	944	12,077	17	1,034	12,207	7	924	11,372	10	946	11,586	17	1,011
No belts used	87	8	36	63	8	27	105	1	31	97	9	43	96	8	47
Child restraint used	3	0	0	0	0	0	0	0	0	0	0	0	3	0	1
Child restraint not used, unavailable or improper use	4	0	0	3	0	0	1	0	0	0	0	0	0	0	0
Restraint failure	7	0	0	12	0	1	6	1	1	3	0	0	6	0	2
Restraint use unknown	222	3	26	246	1	31	248	0	32	213	1	22	547	2	33
Helmet worn	121	5	81	117	2	84	110	2	85	101	6	70	96	2	70
Helmet not worn	26	2	21	22	0	21	26	0	20	41	0	33	35	5	25
Helmet use unknown	7	0	1	4	1	2	3	0	1	10	1	4	7	0	5
Uncoded & errors	409	0	1	482	0	2	487	0	0	505	0	1	234	0	2
Total	11,762	33	1,129	13,131	30	1,222	13,404	11	1,112	12,506	28	1,144	12,750	34	1,214

5-Year Trend - Restraint Use Among Drivers Coded Drinking

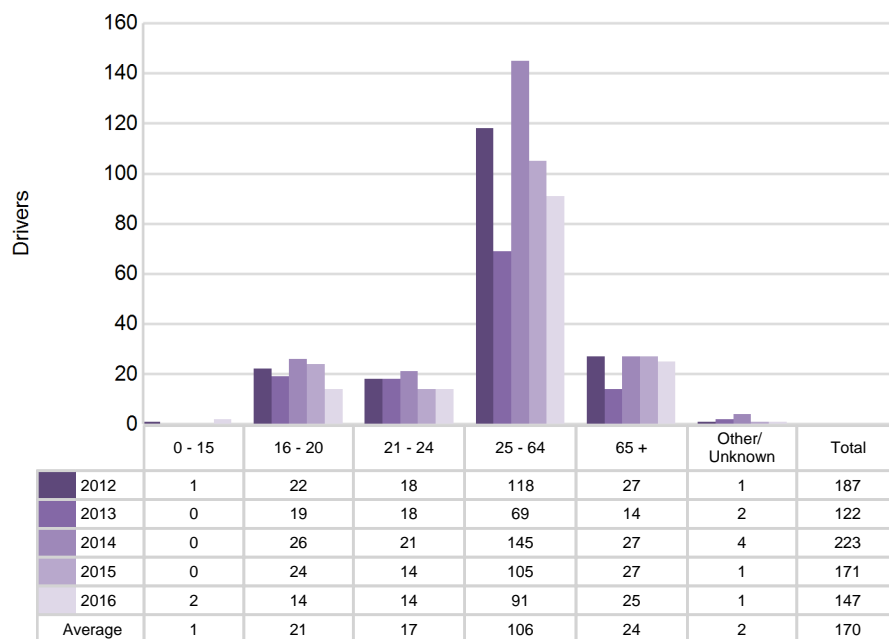
Restraint Use	2012			2013			2014			2015			2016		
	Drivers	Fatal Drivers	Injured Drivers	Drivers	Fatal Drivers	Injured Drivers	Drivers	Fatal Drivers	Injured Drivers	Drivers	Fatal Drivers	Injured Drivers	Drivers	Fatal Drivers	Injured Drivers
No belts available	2	0	0	0	0	0	6	0	1	3	0	3	3	0	1
Shoulder belt only used	2	0	0	2	0	2	1	0	1	1	0	0	1	0	1
Lap belt only used	1	0	0	3	0	2	2	0	0	0	0	0	0	0	0
Both lap & shoulder belts used	236	3	65	205	4	46	187	1	46	193	1	55	257	3	81
No belts used	21	6	8	17	5	7	15	1	13	19	2	14	22	3	16
Child restraint used	0	0	0	0	0	0	0	0	0	0	0	0	1	0	0
Child restraint not used, unavailable or improper use	0	0	0	0	0	0	0	0	0	0	0	0	0	0	0
Restraint failure	0	0	0	0	0	0	2	0	0	0	0	0	1	0	1
Restraint use unknown	47	1	13	57	1	16	35	0	14	32	0	12	48	0	17
Helmet worn	6	2	4	10	1	7	8	1	7	9	2	7	8	1	5
Helmet not worn	6	0	5	3	0	3	3	0	3	7	0	7	4	1	3
Helmet use unknown	0	0	0	0	0	0	0	0	0	1	0	1	2	0	2
Uncoded & errors	1	0	0	2	0	0	1	0	0	1	0	0	3	0	2
Total	322	12	95	299	11	83	260	3	85	266	5	99	350	8	129

5-Year Trend - Seatbelt Not Used Among Drivers by Age

Age Group	2012			2013			2014			2015			2016		
	Drivers	Fatal Drivers	Injured Drivers	Drivers	Fatal Drivers	Injured Drivers	Drivers	Fatal Drivers	Injured Drivers	Drivers	Fatal Drivers	Injured Drivers	Drivers	Fatal Drivers	Injured Drivers
0 - 15	1	0	0	0	0	0	0	0	0	0	0	0	2	0	2
16 - 20	22	1	7	19	0	11	26	1	6	24	1	12	14	0	5
21 - 24	18	2	6	18	0	4	21	0	7	14	1	3	14	1	7
25 - 64	118	2	29	69	6	20	145	0	29	105	5	36	91	5	33
65 +	27	3	7	14	3	3	27	0	1	27	3	7	25	2	9
Unknown	1	0	0	2	0	0	4	0	0	1	0	0	1	0	0
Total	187	8	49	122	9	38	223	1	43	171	10	58	147	8	56

Note: Seatbelt Not Used includes no belts available or no belts used.

5-Year Trend Driver Seatbelt Not Used



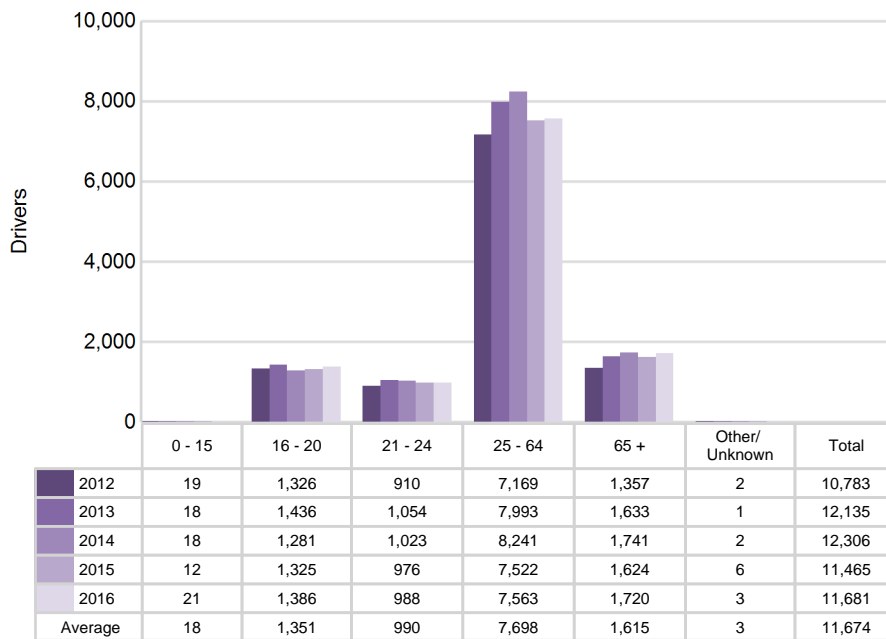
Traffic Safety Network Traverse Bay Area (continued)

5-Year Trend - Seatbelt Used Among Drivers by Age

Age Group	2012			2013			2014			2015			2016		
	Drivers	Fatal Drivers	Injured Drivers	Drivers	Fatal Drivers	Injured Drivers	Drivers	Fatal Drivers	Injured Drivers	Drivers	Fatal Drivers	Injured Drivers	Drivers	Fatal Drivers	Injured Drivers
0 - 15	19	0	0	18	1	1	18	0	3	12	0	3	21	0	5
16 - 20	1,326	1	149	1,436	3	129	1,281	0	98	1,325	3	131	1,386	2	123
21 - 24	910	3	71	1,054	0	92	1,023	3	99	976	0	93	988	1	92
25 - 64	7,169	7	588	7,993	7	653	8,241	5	568	7,522	3	558	7,563	4	650
65 +	1,357	4	142	1,633	6	169	1,741	0	163	1,624	4	171	1,720	10	152
Unknown	2	0	0	1	0	0	2	0	0	6	0	0	3	0	0
Total	10,783	15	950	12,135	17	1,044	12,306	8	931	11,465	10	956	11,681	17	1,022

Note: Seatbelt Used includes shoulder belt only used, lap belt only used, both lap and shoulder belts used, and restraint failure.

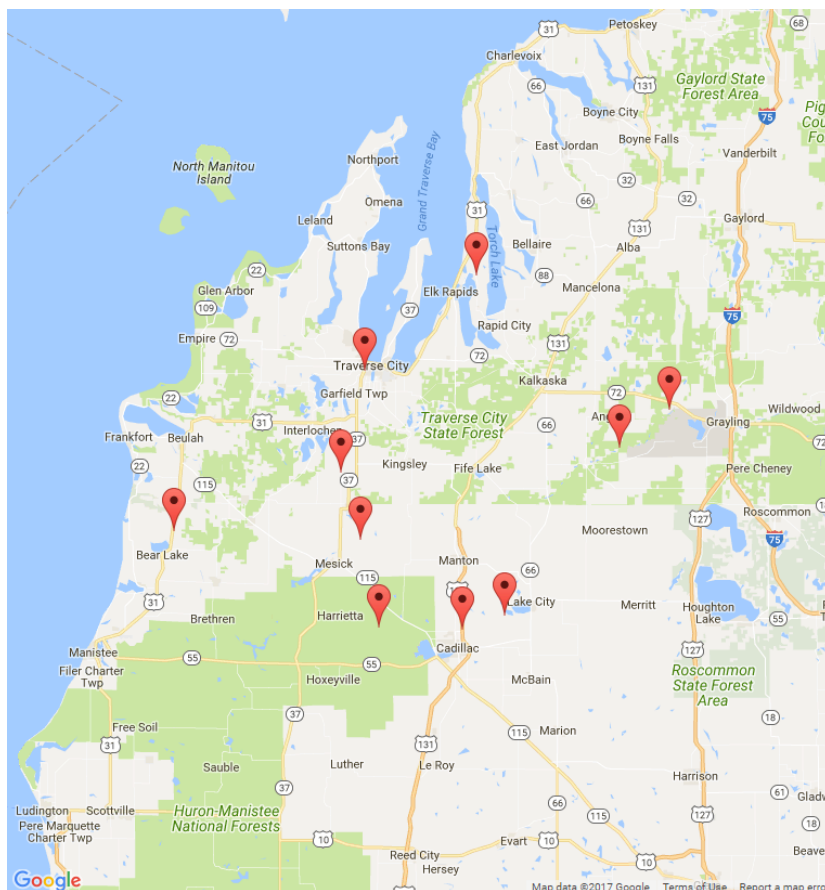
5-Year Trend Driver Seatbelt Used



5-Year Trend - Drivers in Crashes by Hazardous Action

Hazardous Action	2012		2013		2014		2015		2016	
	Total Drivers in Crashes	Drivers in Fatal Crashes	Total Drivers in Crashes	Drivers in Fatal Crashes	Total Drivers in Crashes	Drivers in Fatal Crashes	Total Drivers in Crashes	Drivers in Fatal Crashes	Total Drivers in Crashes	Drivers in Fatal Crashes
None	6,744	24	7,353	25	7,752	18	7,326	21	7,048	29
Speed too fast	1,195	10	1,615	14	1,507	6	1,139	13	1,306	12
Speed too slow	14	0	15	0	18	0	18	0	14	0
Failed to yield	990	6	1,008	3	1,154	2	1,040	4	1,095	6
Disregard traffic control	147	1	151	8	138	0	143	0	147	4
Drove wrong way	2	0	3	0	5	0	5	0	6	0
Drove left of center	78	3	92	1	101	4	79	6	107	4
Improper passing	54	1	39	0	55	0	63	0	60	0
Improper lane use	104	0	150	0	132	1	136	0	162	3
Improper turn	65	0	63	0	72	0	66	0	77	0
Improper/no signal	20	1	21	0	33	0	16	0	7	0
Improper backing	163	0	177	0	202	0	189	0	180	0
Unable to stop in assured clear distance	1,125	1	1,378	0	1,340	0	1,337	3	1,390	1
Other	363	3	338	1	389	2	402	1	375	1
Unknown	177	4	223	3	200	2	224	5	397	9
Reckless driving	48	1	41	2	29	2	42	1	34	1
Careless/negligent driving	306	2	285	2	228	1	238	4	280	2
Uncoded & errors	167	1	179	0	49	0	43	0	65	3
Total	11,762	58	13,131	59	13,404	38	12,506	58	12,750	75

Traffic Safety Network Traverse Bay Area (continued)



The picture above represents all 2016 alcohol-involved fatal crashes in TSN Traverse Bay Area

In 2016, there were 356 alcohol-involved crashes in TSN Traverse Bay Area:

- 10 K - Fatal Crashes
- 34 A - Suspected Serious Injury Crashes
- 70 B - Suspected Minor Injury Crashes
- 58 C - Possible Injury Crashes
- 184 O - Property Damage Only/No Injury Crashes

Office of Highway Safety Planning

Physical Address:
7150 Harris Drive
Dimondale, Michigan 48821

Mailing Address:
P.O. Box 30634
Lansing, Michigan 48909

Phone: (517) 284-3112
Fax: (517) 284-3151

Find us on the web:
MichiganTrafficCrashFacts.org

