



2016

**MTCF**  
Michigan Traffic  
Crash Facts

# Michigan Traffic Crash Facts

## Reporting Criteria

Please pay particular attention to the wording when interpreting the three levels of data gathered for this report.

### Crash

The Crash Level analyzes data related to crash events and returns one result per crash.

Examples: Time, weather, and location.

### Units

The Units Level analyzes the experience of the units in the crash and returns one result per vehicle, driver, pedestrian, bicyclist, or train.

Examples: Vehicle type, driver condition, and unit events.

### People

The People Level analyzes the experience of the people involved in the crash and returns one result per occupant/person/party.

Examples: Age, injury severity, and seat belt or helmet use.

### **KABCO Injury Indicator:**

K = Killed

A = Suspected Serious Injury

B = Suspected Minor Injury

C = Possible Injury

O = No Injury

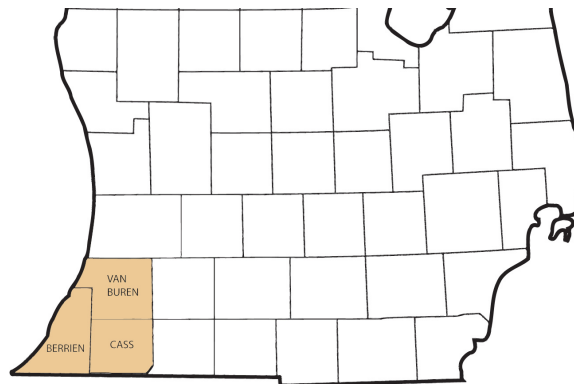
Property Damage Only (PDO)



## Traffic Safety Network Southwest

### 2016 Traffic Crash Data & 2012-2016 5-Year Trends

Traffic Safety Network Southwest is comprised of Berrien, Cass, and Van Buren counties. Trend tables for this report are based on those counties.



### Sources:

The crashes in this report occurred on public roadways in Michigan and resulted in injuries, fatalities, or property damage (with \$1,000 as a reporting threshold). The information was gathered from Michigan Traffic Crash Report Forms (UD-10) submitted by local police departments, sheriff's offices, and the Michigan State Police. Other related information was obtained from the departments of Transportation, State, and Community Health.

This page left intentionally blank

## TSN Southwest Experience

In 2016:

There were 12,254 drivers involved in 8,404 motor vehicle crashes in Traffic Safety Network Southwest. Of those crashes, 37 were classified as fatal, resulting in 44 fatalities. An additional 2,205 persons were injured.

Traffic Safety Network Southwest experienced the highest number of motor vehicle crashes (1,056) in January, the highest number of fatal crashes (6) in April and December, and the highest number of persons killed (8) in December.

Michigan driver statistics indicate 6.6 percent of licensed drivers in Traffic Safety Network Southwest were age 16-20, and 10.9 percent of drivers in crashes were also in that age group.

## 2016 - Crashes and Injuries by Month

Month	Crashes				Persons	
	Total	Fatal	Injury	Property Damage Only (PDO)	Fatalities	Injuries
January	1,056	2	138	916	3	215
February	907	4	125	778	5	161
March	525	2	92	431	2	126
April	515	6	107	402	6	158
May	567	1	124	442	1	175
June	641	5	153	483	7	214
July	651	0	160	491	0	259
August	548	1	125	422	1	184
September	547	3	132	412	3	185
October	669	2	142	525	2	195
November	843	5	113	725	6	147
December	935	6	128	801	8	186
<b>Total</b>	<b>8,404</b>	<b>37</b>	<b>1,539</b>	<b>6,828</b>	<b>44</b>	<b>2,205</b>

## 2016 - Driver Statistics

Age Group	Statewide			Driver Rates	
	2016 Population	Licensed Drivers	Drivers in Crashes	Per 10k Population	Per 10k Licensed
0 - 15	1,923,244	49,678	17	0.1	3.4
16 - 20	672,666	471,135	1,333	19.8	28.3
21 - 24	570,792	470,489	1,051	18.4	22.3
25 - 64	5,149,843	4,748,323	7,786	15.1	16.4
65 +	1,611,755	1,437,067	1,403	8.7	9.8
Unknown	0	0	664	--	--
<b>Total</b>	<b>9,928,300</b>	<b>7,176,692</b>	<b>12,254</b>	<b>12.3</b>	<b>17.1</b>

## 2016 - Vehicles in Crashes

Vehicle Type	Motor Vehicles		Fatal Crashes		Injury Crashes	PDO Crashes
	Number of Vehicles	% of Total	Number	% of Total	Number	Number
Passenger car, SUV, van	9,284	75.8	43	66.2	1,900	7,341
Motor home	209	1.7	1	1.5	30	178
Pickup truck	1,696	13.8	10	15.4	341	1,345
Small truck under 10,000 lbs. GVWR	101	0.8	0	0.0	19	82
Motorcycle	124	1.0	2	3.1	93	29
Moped / goped	15	0.1	0	0.0	12	3
Go-cart / golf cart	1	0.0	0	0.0	1	0
Snowmobile	0	0.0	0	0.0	0	0
Off-Road Vehicle - ORV / All-Terrain Vehicle - ATV	6	0.0	0	0.0	5	1
Other	72	0.6	0	0.0	19	53
Truck/bus over 10,000 lbs.	537	4.4	9	13.8	108	420
Unknown	209	1.7	0	0.0	22	187
<b>Total</b>	<b>12,254</b>	<b>100.0</b>	<b>65</b>	<b>100.0</b>	<b>2,550</b>	<b>9,639</b>

# Traffic Safety Network Southwest (continued)

## 5-Year Trend - Crashes by Month

Month	2012		2013		2014		2015		2016	
	Total Crashes	Fatal Crashes	Total Crashes	Fatal Crashes	Total Crashes	Fatal Crashes	Total Crashes	Fatal Crashes	Total Crashes	Fatal Crashes
January	1,012	0	926	3	1,325	0	1,096	5	1,056	2
February	643	2	858	3	797	0	1,178	3	907	4
March	498	4	567	5	646	3	506	1	525	2
April	422	3	394	3	443	4	422	2	515	6
May	524	3	505	2	490	6	558	4	567	1
June	546	4	527	3	527	0	583	3	641	5
July	515	5	558	4	589	5	657	5	651	0
August	482	3	485	6	509	2	542	5	548	1
September	451	7	494	8	497	4	528	8	547	3
October	632	5	676	5	757	2	720	5	669	2
November	670	2	1,055	5	1,159	1	906	3	843	5
December	814	2	956	5	537	1	793	2	935	6
<b>Total</b>	<b>7,209</b>	<b>40</b>	<b>8,001</b>	<b>52</b>	<b>8,276</b>	<b>28</b>	<b>8,489</b>	<b>46</b>	<b>8,404</b>	<b>37</b>

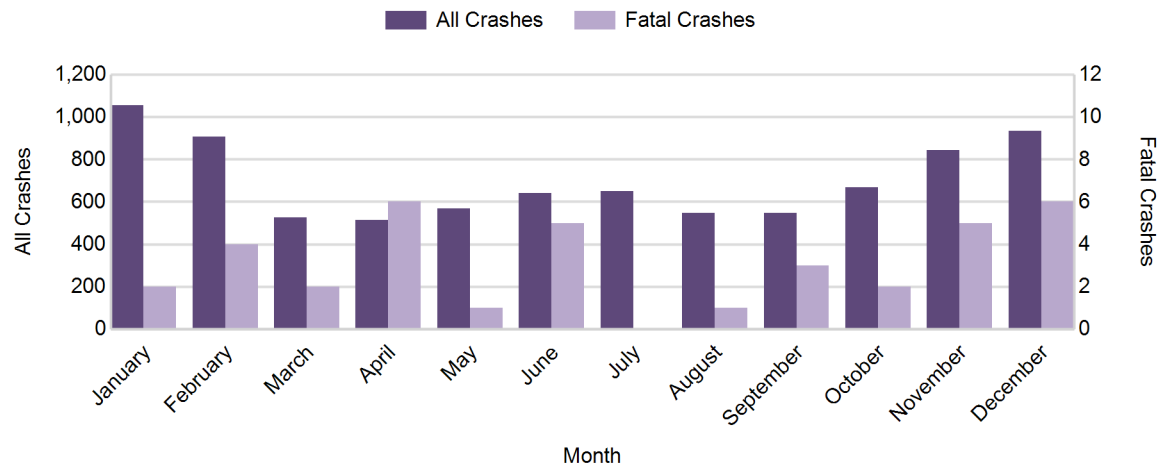
Note: † Indicates that the highest number of total crashes reported in the 5-year period occurred in the same month

## 5-Year Trend - Crashes by Day of Week

Day	2012		2013		2014		2015		2016	
	Total Crashes	Fatal Crashes	Total Crashes	Fatal Crashes	Total Crashes	Fatal Crashes	Total Crashes	Fatal Crashes	Total Crashes	Fatal Crashes
Monday	1,040	7	1,114	6	1,033	5	1,201	6	1,292	4
Tuesday	930	10	1,336	5	1,237	3	1,084	2	1,211	5
Wednesday	1,057	3	1,333	7	1,202	5	1,240	4	1,164	3
Thursday	943	1	1,165	9	1,489	4	1,278	6	1,191	7
Friday	1,304	4	1,121	12	1,348	3	1,306	5	1,272	6
Saturday	1,044	4	1,054	6	1,085	5	1,357	13	1,130	5
Sunday	891	11	878	7	882	3	1,023	10	1,144	7
<b>Total</b>	<b>7,209</b>	<b>40</b>	<b>8,001</b>	<b>52</b>	<b>8,276</b>	<b>28</b>	<b>8,489</b>	<b>46</b>	<b>8,404</b>	<b>37</b>

Note: † Indicates that the highest number of total crashes reported in the 5-year period occurred on the same day of the week

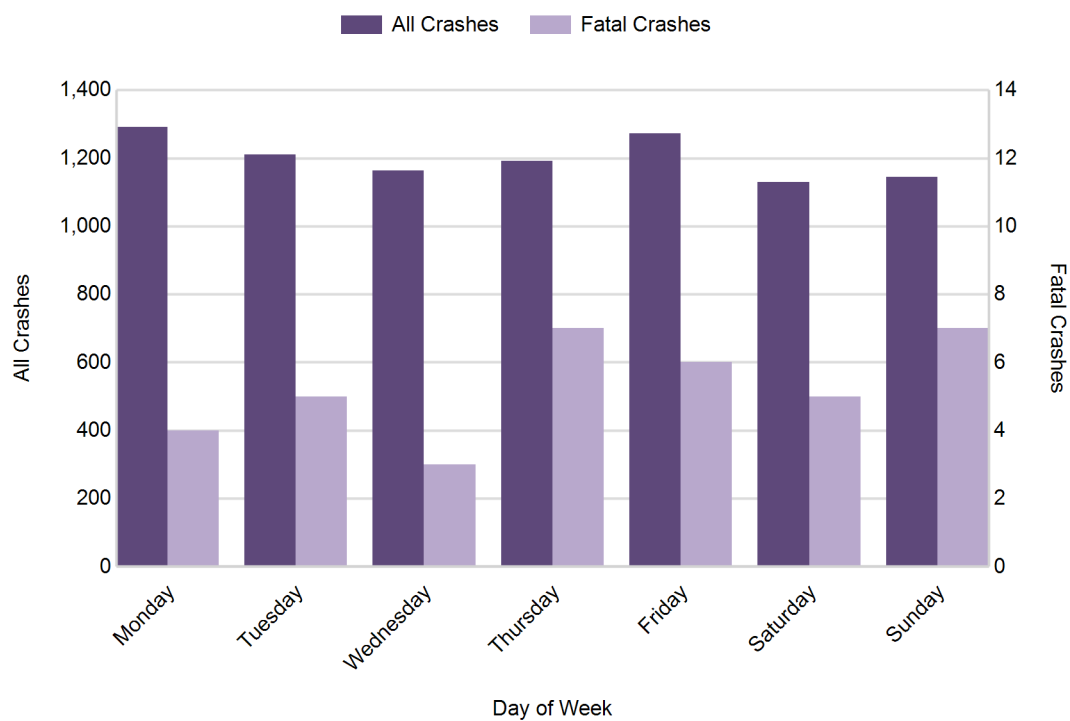
## 2016 Crashes by Month



2016 - Crashes by Day of Week

Day	All Crashes		Fatal Crashes		Injury Crashes			PDO Crashes
	Number	% of Total	Number	% of Fatal	A	B	C	Number
Monday	1,292	15.4	4	10.8	27	52	152	1,057
Tuesday	1,211	14.4	5	13.5	26	50	126	1,004
Wednesday	1,164	13.9	3	8.1	19	50	142	950
Thursday	1,191	14.2	7	18.9	21	48	152	963
Friday	1,272	15.1	6	16.2	24	49	151	1,042
Saturday	1,130	13.4	5	13.5	29	59	134	903
Sunday	1,144	13.6	7	18.9	29	65	134	909
<b>Total</b>	<b>8,404</b>	<b>100.0</b>	<b>37</b>	<b>100.0</b>	<b>175</b>	<b>373</b>	<b>991</b>	<b>6,828</b>

2016 Day of Week and Severity

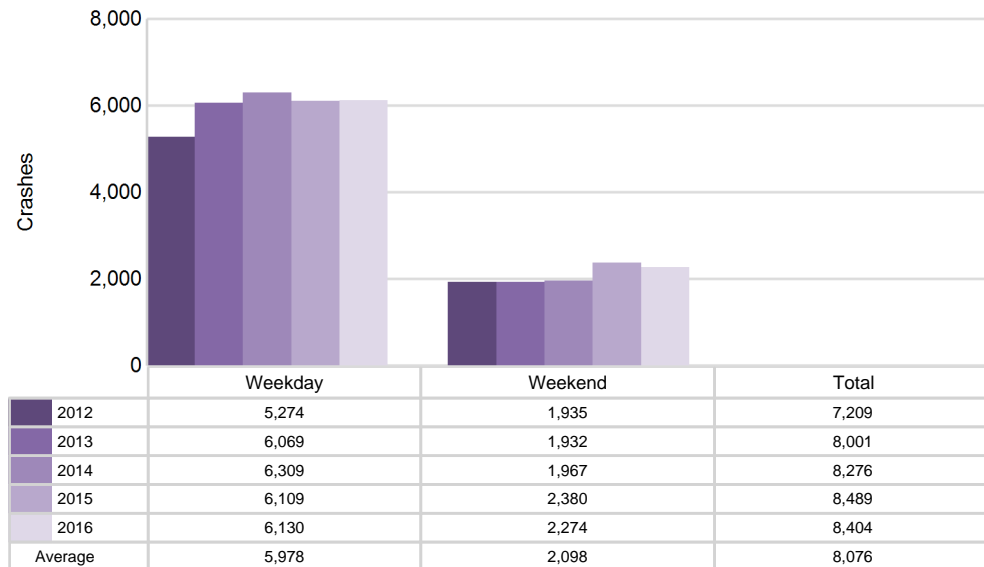


## Traffic Safety Network Southwest (continued)

### 5-Year Trend - Crashes by Weekday and Weekend

Portion of Week	2012		2013		2014		2015		2016	
	Total Crashes	Fatal Crashes	Total Crashes	Fatal Crashes	Total Crashes	Fatal Crashes	Total Crashes	Fatal Crashes	Total Crashes	Fatal Crashes
Weekday	5,274	25	6,069	39	6,309	20	6,109	23	6,130	25
Weekend	1,935	15	1,932	13	1,967	8	2,380	23	2,274	12
<b>Total</b>	<b>7,209</b>	<b>40</b>	<b>8,001</b>	<b>52</b>	<b>8,276</b>	<b>28</b>	<b>8,489</b>	<b>46</b>	<b>8,404</b>	<b>37</b>

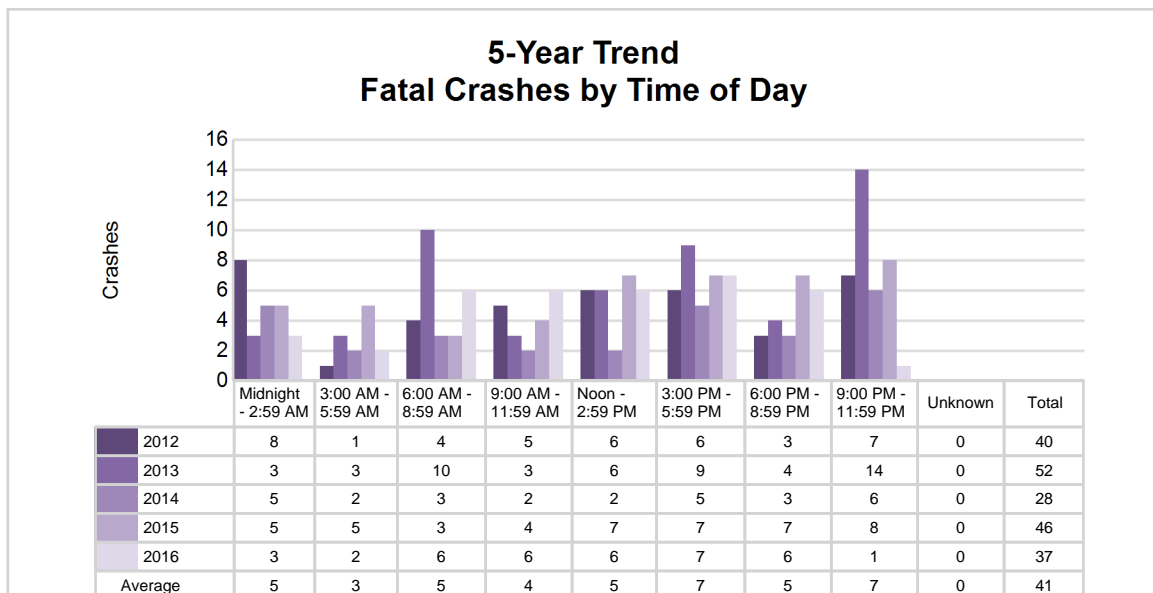
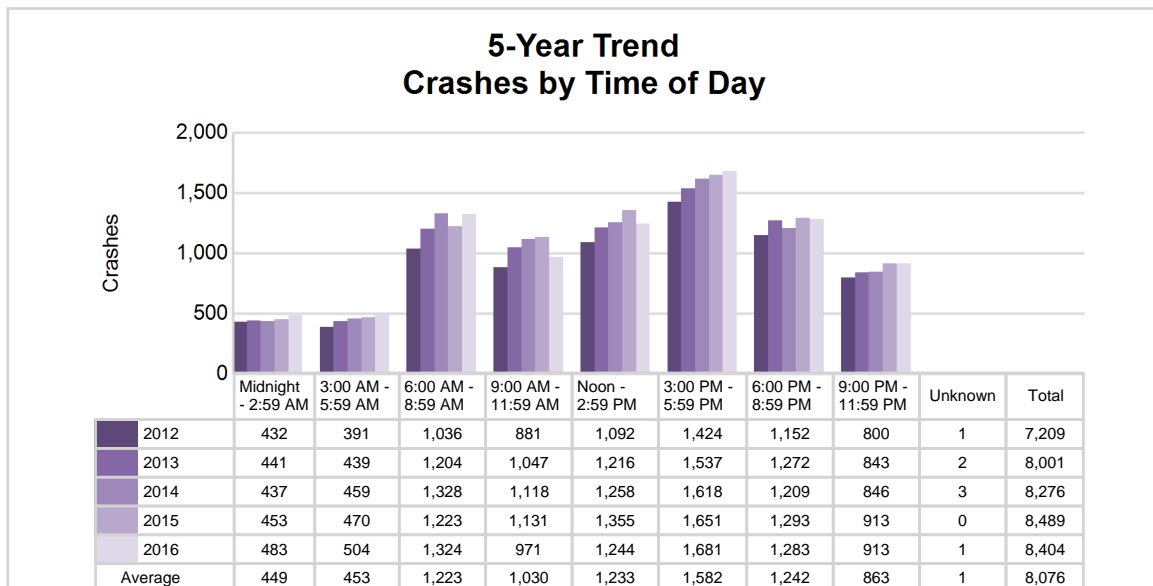
### 5-Year Crash Trends by Weekday (Monday - Friday) and Weekend (Saturday & Sunday)



## 5-Year Trend - Crashes by Time of Day

Time of Day	2012		2013		2014		2015		2016	
	Total Crashes	Fatal Crashes	Total Crashes	Fatal Crashes	Total Crashes	Fatal Crashes	Total Crashes	Fatal Crashes	Total Crashes	Fatal Crashes
Midnight - 2:59 AM	432	8	441	3	437	5	453	5	483	3
3:00 AM - 5:59 AM	391	1	439	3	459	2	470	5	504	2
6:00 AM - 8:59 AM	1,036	4	1,204	10	1,328	3	1,223	3	1,324	6
9:00 AM - 11:59 AM	881	5	1,047	3	1,118	2	1,131	4	971	6
Noon - 2:59 PM	1,092	6	1,216	6	1,258	2	1,355	7	1,244	6
3:00 PM - 5:59 PM	1,424 †	6	1,537 †	9	1,618 †	5	1,651 †	7	1,681 †	7
6:00 PM - 8:59 PM	1,152	3	1,272	4	1,209	3	1,293	7	1,283	6
9:00 PM - 11:59 PM	800	7	843	14	846	6	913	8	913	1
Unknown	1	0	2	0	3	0	0	0	1	0
<b>Total</b>	<b>7,209</b>	<b>40</b>	<b>8,001</b>	<b>52</b>	<b>8,276</b>	<b>28</b>	<b>8,489</b>	<b>46</b>	<b>8,404</b>	<b>37</b>

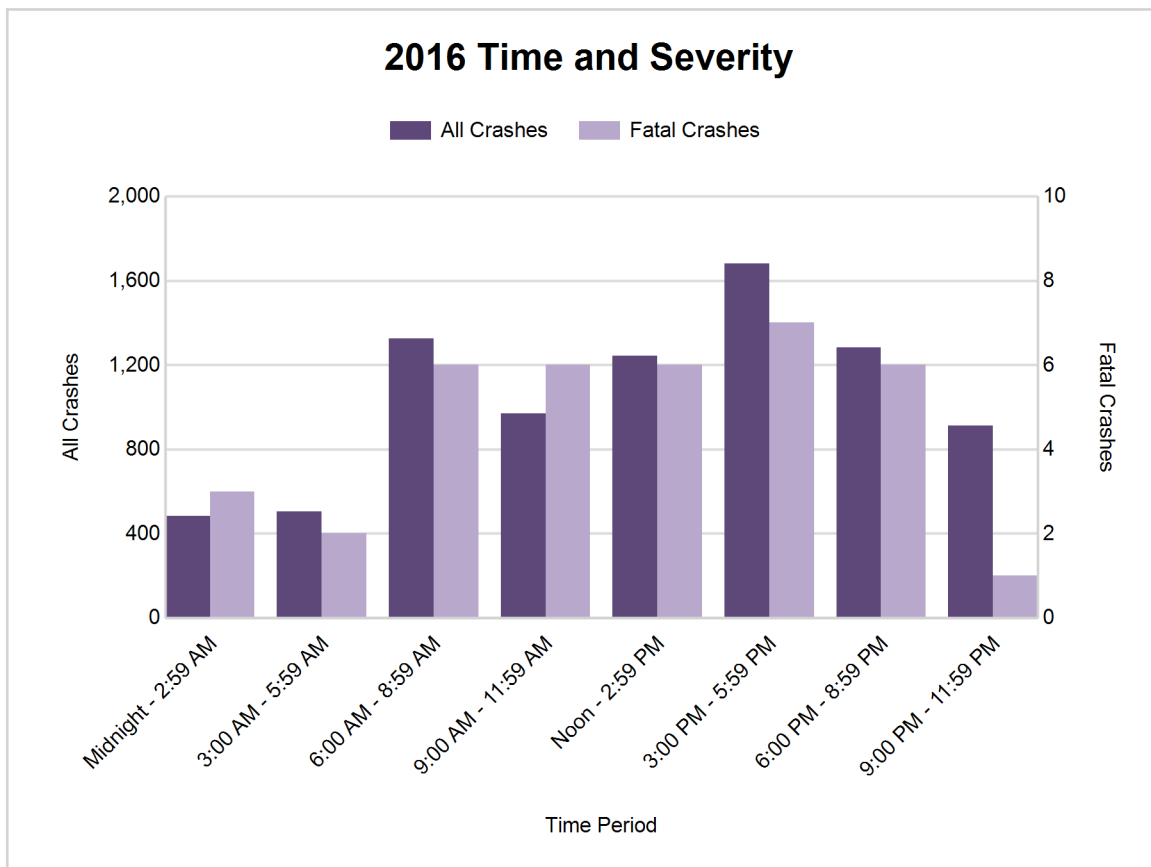
Note: † Indicates that the highest number of total crashes reported in the 5-year period occurred in the same time period



# Traffic Safety Network Southwest (continued)

## 2016 - Time and Severity

Time of Day	All Crashes		Fatal Crashes		Injury Crashes			PDO Crashes
	Number	% of Total	Number	% of Fatal	A	B	C	Number
Midnight - 2:59 AM	483	5.7	3	8.1	11	20	50	399
3:00 AM - 5:59 AM	504	6.0	2	5.4	12	19	37	434
6:00 AM - 8:59 AM	1,324	15.8	6	16.2	14	57	133	1,114
9:00 AM - 11:59 AM	971	11.6	6	16.2	11	34	126	794
Noon - 2:59 PM	1,244	14.8	6	16.2	31	68	194	945
3:00 PM - 5:59 PM	1,681	20.0	7	18.9	40	91	241	1,302
6:00 PM - 8:59 PM	1,283	15.3	6	16.2	33	61	128	1,055
9:00 PM - 11:59 PM	913	10.9	1	2.7	23	23	82	784
Unknown	1	0.0	0	0.0	0	0	0	1
<b>Total</b>	<b>8,404</b>	<b>100.0</b>	<b>37</b>	<b>100.0</b>	<b>175</b>	<b>373</b>	<b>991</b>	<b>6,828</b>

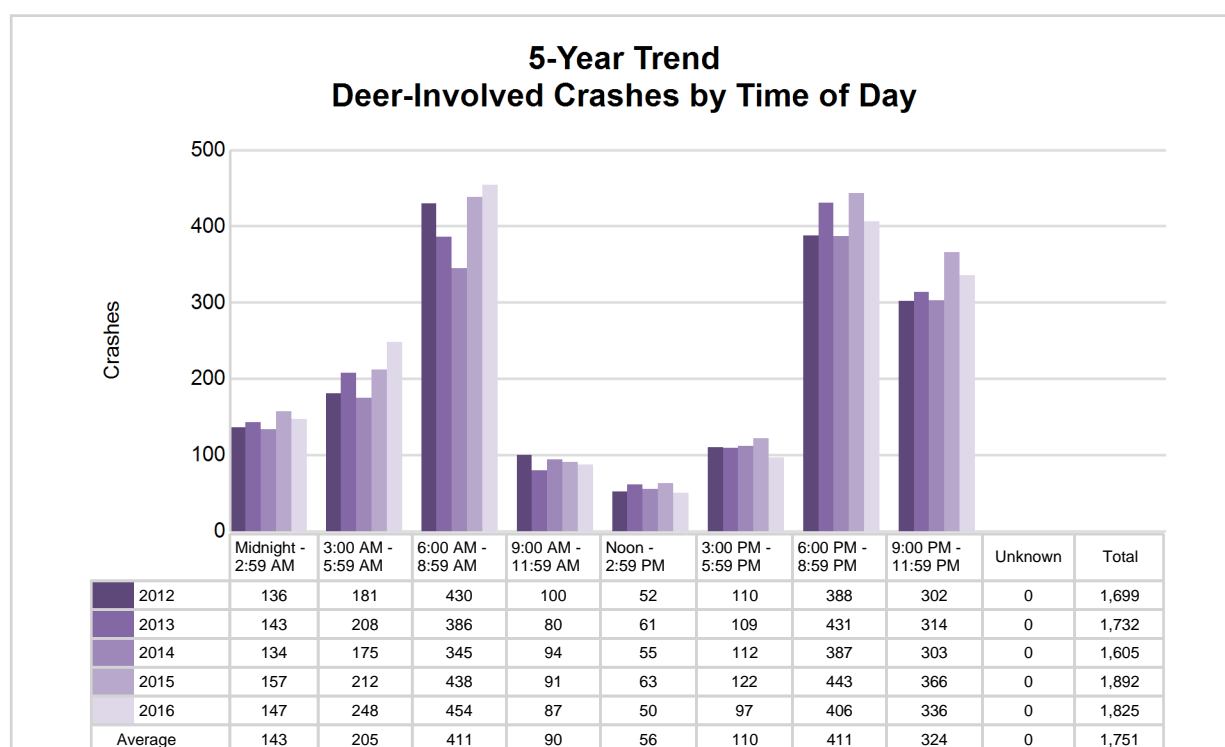




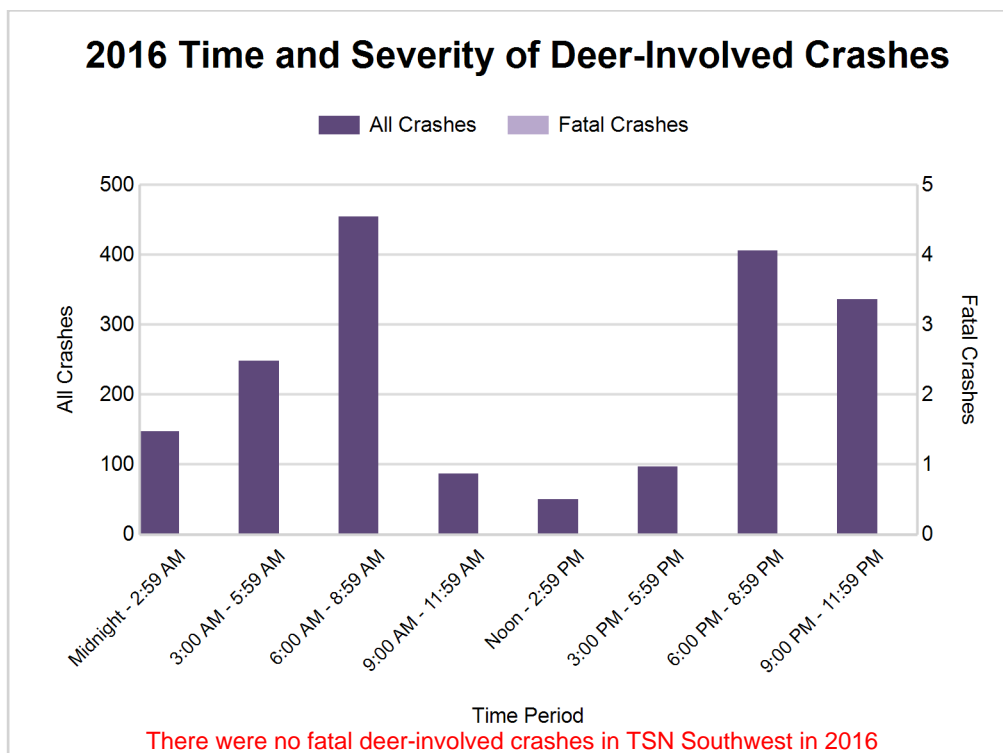
## 5-Year Trend - Deer-Involved Crashes by Time of Day

Time of Day	2012		2013		2014		2015		2016	
	Total Crashes	Fatal Crashes	Total Crashes	Fatal Crashes	Total Crashes	Fatal Crashes	Total Crashes	Fatal Crashes	Total Crashes	Fatal Crashes
Midnight - 2:59 AM	136	0	143	0	134	0	157	0	147	0
3:00 AM - 5:59 AM	181	0	208	0	175	0	212	0	248	0
6:00 AM - 8:59 AM	430	0	386	0	345	0	438	0	454	0
9:00 AM - 11:59 AM	100	0	80	0	94	0	91	0	87	0
Noon - 2:59 PM	52	1	61	0	55	0	63	0	50	0
3:00 PM - 5:59 PM	110	0	109	0	112	0	122	0	97	0
6:00 PM - 8:59 PM	388	0	431	0	387	0	443	0	406	0
9:00 PM - 11:59 PM	302	0	314	0	303	0	366	0	336	0
Unknown	0	0	0	0	0	0	0	0	0	0
<b>Total</b>	<b>1,699</b>	<b>1</b>	<b>1,732</b>	<b>0</b>	<b>1,605</b>	<b>0</b>	<b>1,892</b>	<b>0</b>	<b>1,825</b>	<b>0</b>

Note: † Indicates that the highest number of total crashes reported in the 5-year period occurred in the same time period



## Traffic Safety Network Southwest (continued)



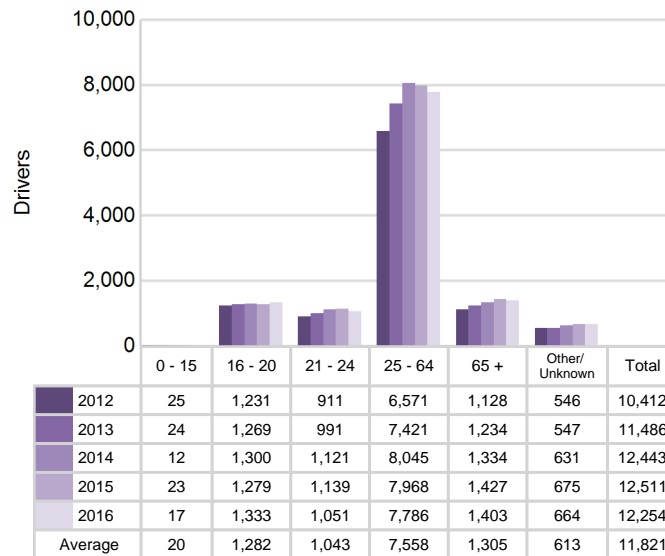
### 2016 - Reported Motor Vehicle Crashes by County

County	Crashes											Persons	
	Total	Fatal	Injury	Property Damage	Inter-state	US Route	State Route	Local Street	Alcohol-Involved	Drug-Involved	Deer-Involved	Fatalities	Injuries
Berrien	4,598	16	859	3,723	1,022	427	916	2,229	185	37	800	20	1,232
Cass	1,407	9	273	1,125	0	143	412	850	56	18	405	9	379
Van Buren	2,399	12	407	1,980	607	0	482	1,300	109	33	620	15	594
<b>Total</b>	<b>8,404</b>	<b>37</b>	<b>1,539</b>	<b>6,828</b>	<b>1,629</b>	<b>570</b>	<b>1,810</b>	<b>4,379</b>	<b>350</b>	<b>88</b>	<b>1,825</b>	<b>44</b>	<b>2,205</b>

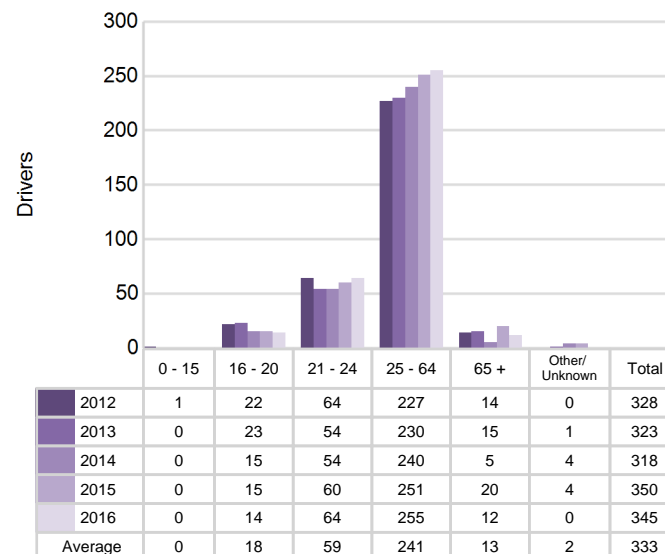
## 5-Year Trend - Drivers in Crashes Coded Drinking by Driver Age

Driver Age	2012		2013		2014		2015		2016	
	Total Drivers in Crashes	Total Drivers Coded Drinking	Total Drivers in Crashes	Total Drivers Coded Drinking	Total Drivers in Crashes	Total Drivers Coded Drinking	Total Drivers in Crashes	Total Drivers Coded Drinking	Total Drivers in Crashes	Total Drivers Coded Drinking
0 - 15	25	1	24	0	12	0	23	0	17	0
16 - 20	1,231	22	1,269	23	1,300	15	1,279	15	1,333	14
21 - 24	911	64	991	54	1,121	54	1,139	60	1,051	64
25 - 64	6,571	227	7,421	230	8,045	240	7,968	251	7,786	255
65 +	1,128	14	1,234	15	1,334	5	1,427	20	1,403	12
Unknown	546	0	547	1	631	4	675	4	664	0
<b>Total</b>	<b>10,412</b>	<b>328</b>	<b>11,486</b>	<b>323</b>	<b>12,443</b>	<b>318</b>	<b>12,511</b>	<b>350</b>	<b>12,254</b>	<b>345</b>

**5-Year Trend  
Total Drivers in Crashes by Age**



**5-Year Trend  
Total Drivers Coded Drinking by Age**



# Traffic Safety Network Southwest (continued)

## 2016 - Bodily Alcohol Concentration (BAC) Results Among All Vehicle Drivers in Alcohol-Involved Crashes by Age

Age Group	Drivers				BAC Result Range for Drivers Coded Drinking				
	Total Drivers in Alcohol-Involved Crashes	Total Drivers Tested in all Crashes	Total Drivers Coded Drinking, Tested	Total Drivers Coded Drinking	BAC = 0.00	BAC 0.01 g/dL to 0.07 g/dL	BAC 0.08 g/dL to 0.16 g/dL	BAC 0.17 g/dL and Above	BAC Not Reported
0 - 15	0	1	0	0	0	0	0	0	0
16 - 20	22	26	12	14	0	1	6	4	3
21 - 24	73	71	54	64	2	14	23	10	15
25 - 64	332	313	222	255	2	27	79	85	62
65 +	22	16	10	12	1	0	5	4	2
Unknown	19	0	0	0	0	0	0	0	0
<b>Total</b>	<b>468</b>	<b>427</b>	<b>298</b>	<b>345</b>	<b>5</b>	<b>42</b>	<b>113</b>	<b>103</b>	<b>82</b>

Notes: BAC measured in grams (g) per deciliter (dL).

BAC may not be reported if drivers are not tested or if the results are not available immediately (as in the case of a blood test).

A driver may be coded by the officer as drinking even though no test is administered.

## Alcohol-Involved Crashes

In 2016, there were 468 drivers in alcohol-involved crashes; 345 (73.7%) of those drivers were coded as had-been-drinking by the officer on the crash form.

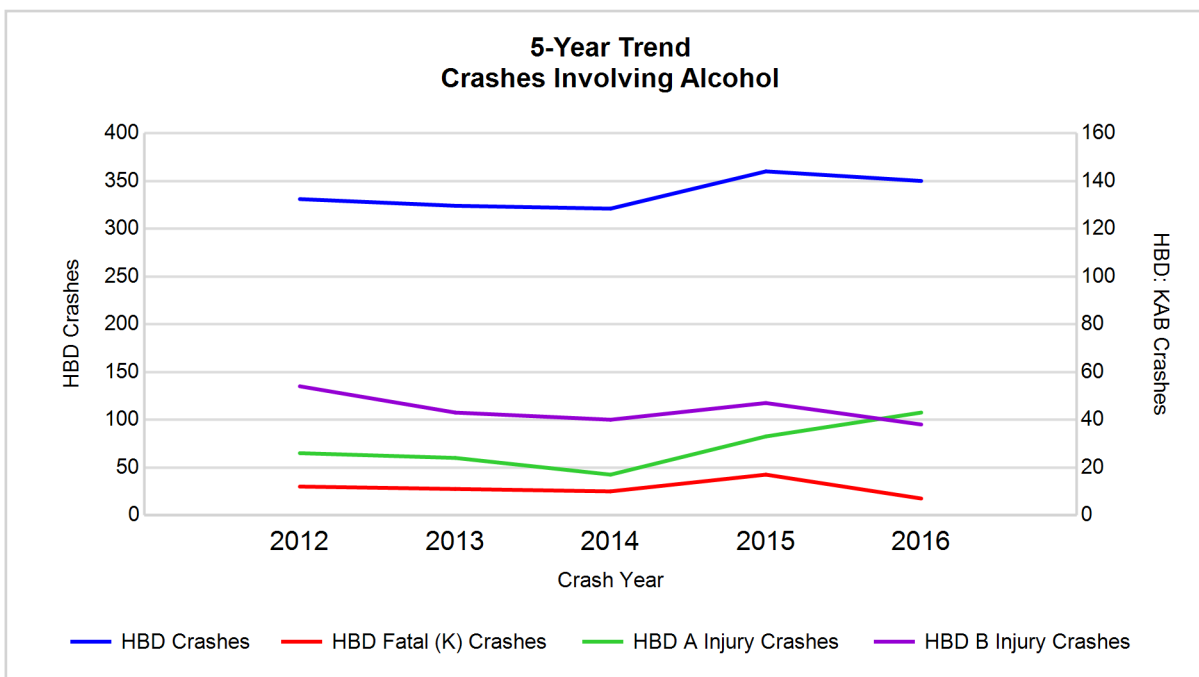
- 216 (62.6%) of the 345 drivers had a blood alcohol concentration (BAC) of 0.08 g/dL (grams per deciliter) or greater, and 103 (47.7%) of the 216 drivers had a BAC at or above 0.17 g/dL.
- 298 (86.4%) of the 345 drivers were coded as had-been-drinking and were tested for alcohol consumption.

## 5-Year Trend - Crashes Involving Alcohol

Year	All Crashes	HBD Crashes	% HBD	Fatal Crashes	HBD Fatal Crashes	% HBD	A Injury Crashes	HBD A Injury Crashes	% HBD	B Injury Crashes	HBD B Injury Crashes	% HBD
2012	7,209	331	4.6	40	12	30.0	157	26	16.6	350	54	15.4
2013	8,001	324	4.0	52	11	21.2	125	24	19.2	345	43	12.5
2014	8,276	321	3.9	28	10	35.7	129	17	13.2	369	40	10.8
2015	8,489	360	4.2	46	17	37.0	138	33	23.9	345	47	13.6
2016	8,404	350	4.2	37	7*	18.9*	175**	43**	24.6**	373**	38*	10.2*

Note: \* Indicates that the most recent year is the lowest number or percentage reported in the 5-year period in that column

\*\* Indicates that the most recent year is the highest number or percentage reported in the 5-year period in that column



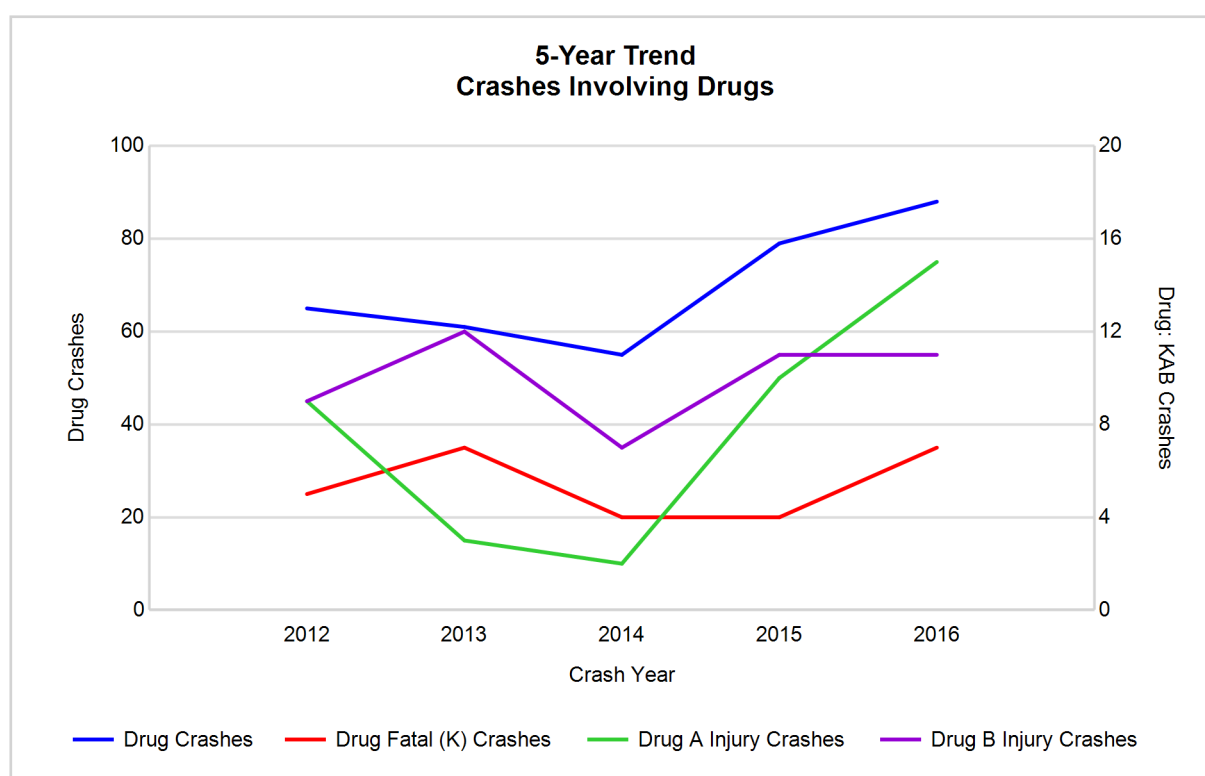
Note: Had-Been-Drinking (HBD)

## 5-Year Trend - Crashes Involving Drugs

Year	All Crashes	Drug Crashes	% Drug	Fatal Crashes	Drug Fatal Crashes	% Drug	A Injury Crashes	Drug A Injury Crashes	% Drug	B Injury Crashes	Drug B Injury Crashes	% Drug
2012	7,209	65	0.9	40	5	12.5	157	9	5.7	350	9	2.6
2013	8,001	61	0.8	52	7	13.5	125	3	2.4	345	12	3.5
2014	8,276	55	0.7	28	4	14.3	129	2	1.6	369	7	1.9
2015	8,489	79	0.9	46	4	8.7	138	10	7.2	345	11	3.2
2016	8,404	88**	1.0**	37	7	18.9**	175**	15**	8.6**	373**	11	2.9

Note: \* Indicates that the most recent year is the lowest number or percentage reported in the 5-year period in that column

\*\* Indicates that the most recent year is the highest number or percentage reported in the 5-year period in that column



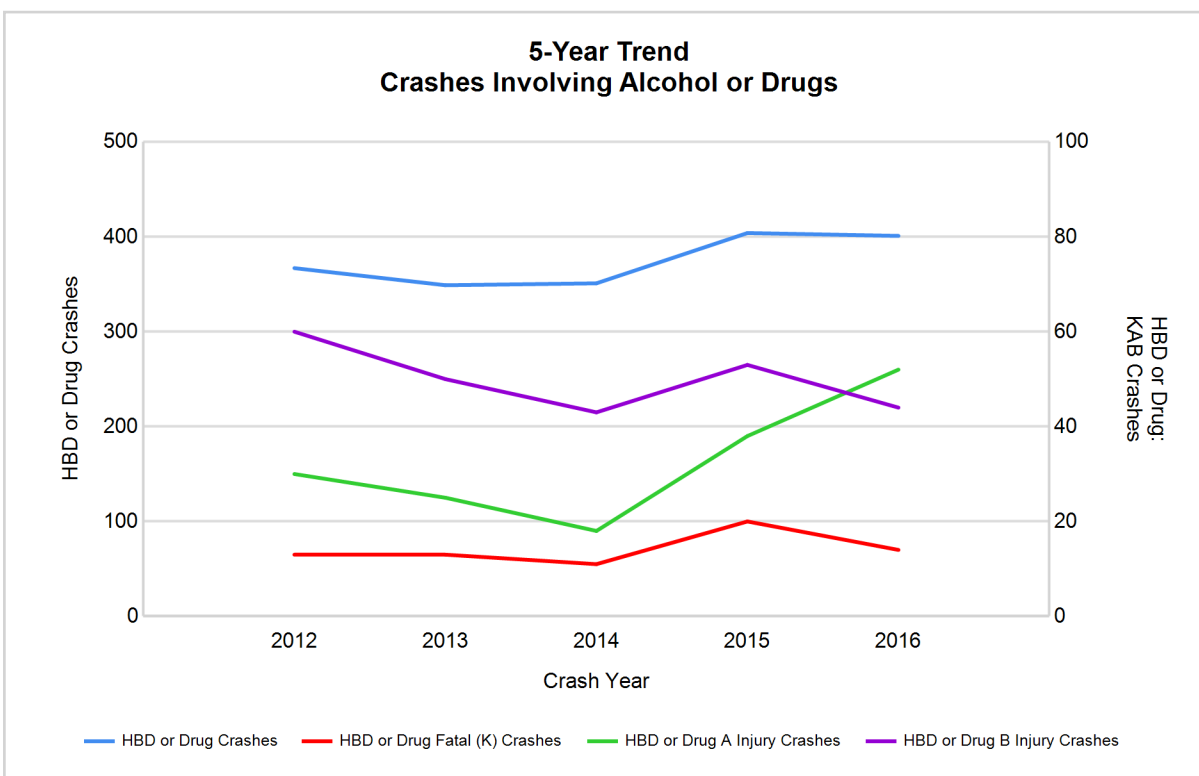
# Traffic Safety Network Southwest (continued)

## 5-Year Trend - Crashes Involving Alcohol or Drugs

Year	All Crashes	HBD or Drug Crashes	% HBD or Drug	Fatal Crashes	HBD or Drug Fatal Crashes	% HBD or Drug	A Injury Crashes	HBD or Drug A Injury Crashes	% HBD or Drug	B Injury Crashes	HBD or Drug B Injury Crashes	% HBD or Drug
2012	7,209	367	5.1	40	13	32.5	157	30	19.1	350	60	17.1
2013	8,001	349	4.4	52	13	25.0	125	25	20.0	345	50	14.5
2014	8,276	351	4.2	28	11	39.3	129	18	14.0	369	43	11.7
2015	8,489	404	4.8	46	20	43.5	138	38	27.5	345	53	15.4
2016	8,404	401	4.8	37	14	37.8	175**	52**	29.7**	373**	44	11.8

Note: \* Indicates that the most recent year is the lowest number or percentage reported in the 5-year period in that column

\*\* Indicates that the most recent year is the highest number or percentage reported in the 5-year period in that column



Note: Had-Been-Drinking (HBD)

# Traffic Safety Network Southwest (continued)

13

## 2016 - Restraints Worn Among Vehicle Drivers and Injured Passengers by Vehicle Type

Vehicle Type	Total Occupants			Fatalities			A - Suspected Serious			B - Suspected Minor			C - Possible Injury			No Injury		
	Total	Used Restraint	%	Total	Used Restraint	%	Total	Used Restraint	%	Total	Used Restraint	%	Total	Used Restraint	%	Total	Used Restraint	%
Passenger car, SUV, van	9,769	8,911	91.2	34	24	70.6	132	105	79.5	369	326	88.3	1,166	1,087	93.2	7,740	7,368	95.2
Motor home	214	200	93.5	0	0	0.0	0	0	0.0	4	4	100.0	21	19	90.5	187	177	94.7
Pickup truck	1,768	1,569	88.7	2	0	0.0	23	14	60.9	60	50	83.3	167	158	94.6	1,431	1,346	94.1
Small truck under 10,000 lbs. GVWR	102	97	95.1	0	0	0.0	0	0	0.0	3	2	66.7	6	6	100.0	90	89	98.9
Motorcycle	140	71	50.7	2	1	50.0	41	19	46.3	39	24	61.5	27	10	37.0	28	17	60.7
Moped / goped	17	3	17.6	0	0	0.0	5	1	20.0	4	1	25.0	3	1	33.3	4	0	0.0
Go-cart / golf cart	2	0	0.0	0	0	0.0	0	0	0.0	1	0	0.0	1	0	0.0	0	0	0.0
Snowmobile	0	0	0.0	0	0	0.0	0	0	0.0	0	0	0.0	0	0	0.0	0	0	0.0
Off-Road Vehicle - ORV / All-Terrain Vehicle - ATV	9	0	0.0	0	0	0.0	5	0	0.0	3	0	0.0	0	0	0.0	1	0	0.0
Other	75	44	58.7	0	0	0.0	1	1	100.0	2	0	0.0	4	2	50.0	59	41	69.5
Truck/bus over 10,000 lbs.	539	487	90.4	1	1	100.0	1	1	100.0	8	6	75.0	24	20	83.3	488	459	94.1
Unknown	209	0	0.0	0	0	0.0	0	0	0.0	0	0	0.0	0	0	0.0	0	0	0.0
<b>Total</b>	<b>12,844</b>	<b>11,382</b>	<b>88.6</b>	<b>39</b>	<b>26</b>	<b>66.7</b>	<b>208</b>	<b>141</b>	<b>67.8</b>	<b>493</b>	<b>413</b>	<b>83.8</b>	<b>1,419</b>	<b>1,303</b>	<b>91.8</b>	<b>10,028</b>	<b>9,497</b>	<b>94.7</b>

Note: Restraint Use includes shoulder belt only used, lap belt only used, both lap and shoulder belts used, child restraint used, restraint failure, and helmet worn.

## 2016 - Restraints Worn Among Vehicle Drivers and Injured Passengers by Age

Age Group	Total Occupants			Fatalities			A - Suspected Serious			B - Suspected Minor			C - Possible Injury			No Injury		
	Total	Used Restraint	%	Total	Used Restraint	%	Total	Used Restraint	%	Total	Used Restraint	%	Total	Used Restraint	%	Total	Used Restraint	%
0 - 15	169	138	81.7	0	0	0.0	12	7	58.3	50	37	74.0	95	85	89.5	12	9	75.0
16 - 20	1,430	1,335	93.4	10	6	60.0	19	14	73.7	75	58	77.3	179	157	87.7	1,146	1,100	96.0
21 - 24	1,110	1,020	91.9	3	1	33.3	18	14	77.8	54	45	83.3	129	113	87.6	903	847	93.8
25 - 64	7,999	7,482	93.5	18	13	72.2	131	83	63.4	258	222	86.0	849	784	92.3	6,725	6,380	94.9
65 +	1,471	1,403	95.4	8	6	75.0	28	23	82.1	55	50	90.9	167	164	98.2	1,211	1,160	95.8
Unknown	665	4	0.6	0	0	0.0	0	0	0.0	1	1	100.0	0	0	0.0	31	1	3.2
<b>Total</b>	<b>12,844</b>	<b>11,382</b>	<b>88.6</b>	<b>39</b>	<b>26</b>	<b>66.7</b>	<b>208</b>	<b>141</b>	<b>67.8</b>	<b>493</b>	<b>413</b>	<b>83.8</b>	<b>1,419</b>	<b>1,303</b>	<b>91.8</b>	<b>10,028</b>	<b>9,497</b>	<b>94.7</b>

Note: Restraint Use includes shoulder belt only used, lap belt only used, both lap and shoulder belts used, child restraint used, restraint failure, and helmet worn.

# Traffic Safety Network Southwest (continued)

## 5-Year Trend - Restraint Use Among Drivers

Restraint Use	2012			2013			2014			2015			2016		
	Drivers	Fatal Drivers	Injured Drivers	Drivers	Fatal Drivers	Injured Drivers	Drivers	Fatal Drivers	Injured Drivers	Drivers	Fatal Drivers	Injured Drivers	Drivers	Fatal Drivers	Injured Drivers
No belts available	89	2	13	81	2	10	66	0	3	70	0	6	53	0	9
Shoulder belt only used	9	0	1	26	0	2	17	0	1	8	0	0	75	0	15
Lap belt only used	54	0	4	48	0	4	48	0	7	63	0	11	38	0	7
Both lap & shoulder belts used	9,106	14	1,077	10,140	26	1,100	11,031	8	1,175	11,025	15	1,195	10,717	18	1,313
No belts used	109	9	44	134	6	47	125	5	38	114	6	39	104	2	40
Child restraint used	0	0	0	0	0	0	0	0	0	0	0	0	0	0	0
Child restraint not used, unavailable or improper use	0	0	0	2	0	0	0	0	0	0	0	0	0	0	0
Restraint failure	4	0	2	4	0	0	6	0	0	2	0	1	5	0	0
Restraint use unknown	370	2	45	403	3	61	398	2	55	439	6	43	895	6	50
Helmet worn	97	5	70	61	1	43	67	0	49	61	4	41	65	1	47
Helmet not worn	37	0	28	47	1	37	44	4	30	55	3	40	64	0	52
Helmet use unknown	4	0	0	11	1	6	8	1	4	6	0	5	12	1	7
Uncoded & errors	533	0	0	529	0	2	633	0	0	668	0	1	226	0	1
<b>Total</b>	<b>10,412</b>	<b>32</b>	<b>1,284</b>	<b>11,486</b>	<b>40</b>	<b>1,312</b>	<b>12,443</b>	<b>20</b>	<b>1,362</b>	<b>12,511</b>	<b>34</b>	<b>1,382</b>	<b>12,254</b>	<b>28</b>	<b>1,541</b>

## 5-Year Trend - Restraint Use Among Drivers Coded Drinking

Restraint Use	2012			2013			2014			2015			2016		
	Drivers	Fatal Drivers	Injured Drivers	Drivers	Fatal Drivers	Injured Drivers	Drivers	Fatal Drivers	Injured Drivers	Drivers	Fatal Drivers	Injured Drivers	Drivers	Fatal Drivers	Injured Drivers
No belts available	1	0	0	3	0	2	2	0	0	4	0	2	2	0	1
Shoulder belt only used	2	0	0	1	0	1	1	0	0	0	0	0	4	0	1
Lap belt only used	1	0	0	1	0	0	1	0	0	2	0	1	1	0	1
Both lap & shoulder belts used	236	3	83	220	4	61	234	1	61	259	4	80	256	2	91
No belts used	24	4	14	27	3	15	17	1	10	29	1	19	19	0	13
Child restraint used	0	0	0	0	0	0	0	0	0	0	0	0	0	0	0
Child restraint not used, unavailable or improper use	0	0	0	0	0	0	0	0	0	0	0	0	0	0	0
Restraint failure	1	0	1	0	0	0	0	0	0	0	0	0	0	0	0
Restraint use unknown	58	1	16	58	0	18	49	1	11	44	1	16	48	2	7
Helmet worn	2	0	1	4	0	3	4	0	4	4	1	2	0	0	0
Helmet not worn	2	0	2	8	0	6	7	2	3	5	0	4	14	0	12
Helmet use unknown	1	0	0	0	0	0	0	0	0	0	0	0	1	0	1
Uncoded & errors	0	0	0	1	0	0	3	0	0	3	0	1	0	0	0
<b>Total</b>	<b>328</b>	<b>8</b>	<b>117</b>	<b>323</b>	<b>7</b>	<b>106</b>	<b>318</b>	<b>5</b>	<b>89</b>	<b>350</b>	<b>7</b>	<b>125</b>	<b>345</b>	<b>4</b>	<b>127</b>

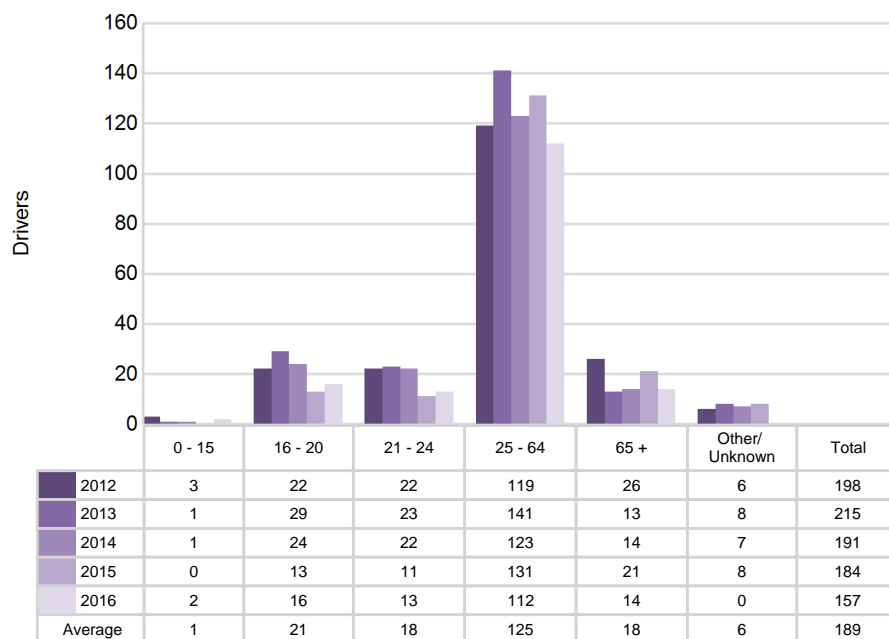


## 5-Year Trend - Seatbelt Not Used Among Drivers by Age

Age Group	2012			2013			2014			2015			2016		
	Drivers	Fatal Drivers	Injured Drivers	Drivers	Fatal Drivers	Injured Drivers	Drivers	Fatal Drivers	Injured Drivers	Drivers	Fatal Drivers	Injured Drivers	Drivers	Fatal Drivers	Injured Drivers
0 - 15	3	1	0	1	0	0	1	0	0	0	0	0	2	0	1
16 - 20	22	1	8	29	1	9	24	0	10	13	1	2	16	1	8
21 - 24	22	0	6	23	0	13	22	1	5	11	1	3	13	0	3
25 - 64	119	7	37	141	6	33	123	4	24	131	2	34	112	1	33
65 +	26	2	6	13	1	2	14	0	2	21	2	5	14	0	4
Unknown	6	0	0	8	0	0	7	0	0	8	0	1	0	0	0
<b>Total</b>	<b>198</b>	<b>11</b>	<b>57</b>	<b>215</b>	<b>8</b>	<b>57</b>	<b>191</b>	<b>5</b>	<b>41</b>	<b>184</b>	<b>6</b>	<b>45</b>	<b>157</b>	<b>2</b>	<b>49</b>

Note: Seatbelt Not Used includes no belts available or no belts used.

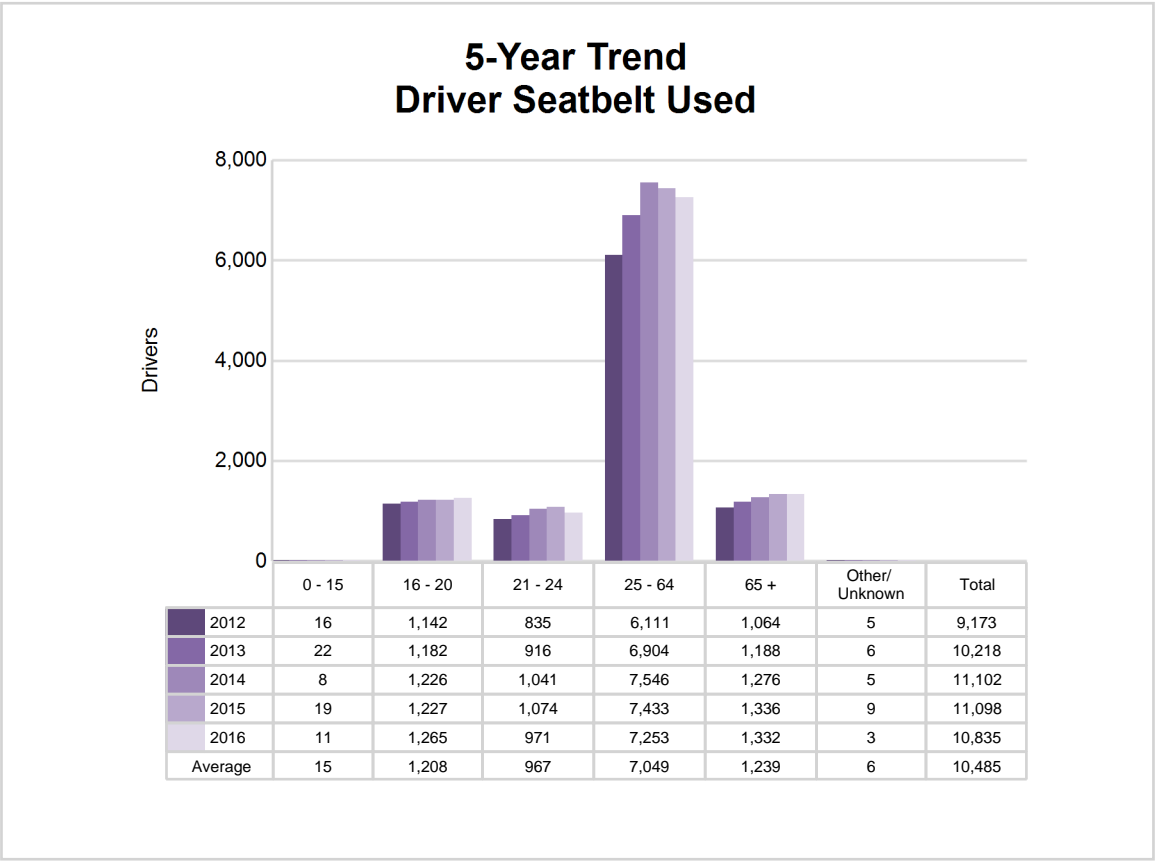
## 5-Year Trend Driver Seatbelt Not Used



5-Year Trend - Seatbelt Used Among Drivers by Age

Age Group	2012			2013			2014			2015			2016		
	Drivers	Fatal Drivers	Injured Drivers	Drivers	Fatal Drivers	Injured Drivers	Drivers	Fatal Drivers	Injured Drivers	Drivers	Fatal Drivers	Injured Drivers	Drivers	Fatal Drivers	Injured Drivers
0 - 15	16	0	4	22	0	4	8	0	1	19	0	6	11	0	2
16 - 20	1,142	3	145	1,182	4	126	1,226	1	123	1,227	2	151	1,265	3	164
21 - 24	835	5	104	916	2	115	1,041	1	138	1,074	4	129	971	1	125
25 - 64	6,111	3	688	6,904	6	697	7,546	5	793	7,433	5	751	7,253	11	873
65 +	1,064	3	143	1,188	14	164	1,276	1	128	1,336	4	170	1,332	3	171
Unknown	5	0	0	6	0	0	5	0	0	9	0	0	3	0	0
Total	9,173	14	1,084	10,218	26	1,106	11,102	8	1,183	11,098	15	1,207	10,835	18	1,335

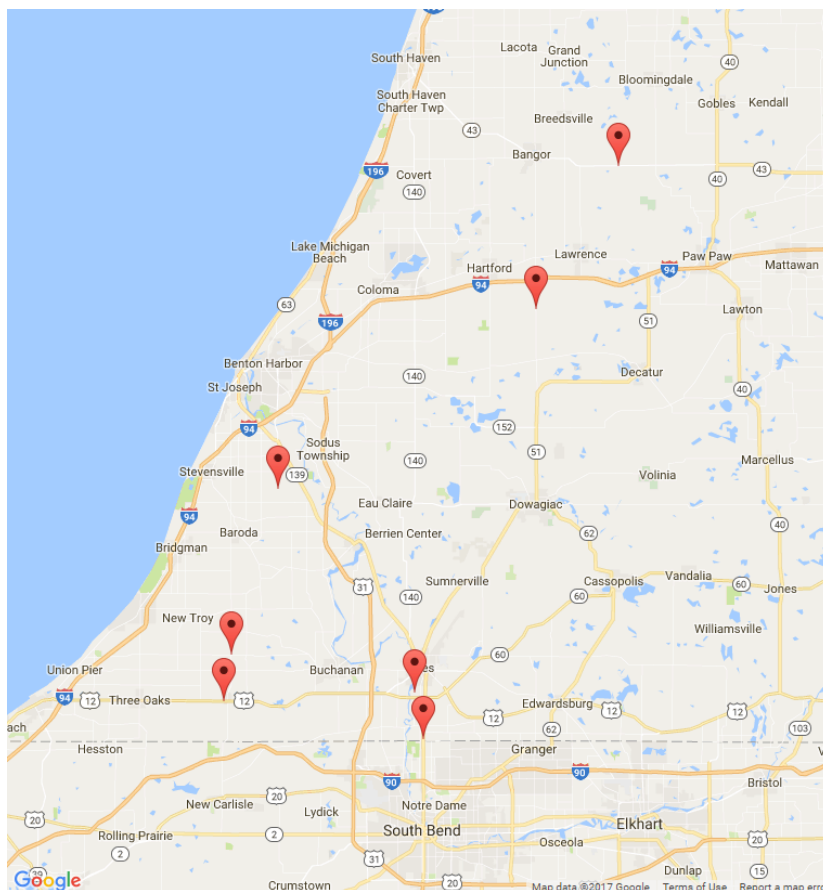
Note: Seatbelt Used includes shoulder belt only used, lap belt only used, both lap and shoulder belts used, and restraint failure.



## 5-Year Trend - Drivers in Crashes by Hazardous Action

Hazardous Action	2012		2013		2014		2015		2016	
	Total Drivers in Crashes	Drivers in Fatal Crashes	Total Drivers in Crashes	Drivers in Fatal Crashes	Total Drivers in Crashes	Drivers in Fatal Crashes	Total Drivers in Crashes	Drivers in Fatal Crashes	Total Drivers in Crashes	Drivers in Fatal Crashes
None	5,468	25	5,827	37	6,408	15	6,552	28	6,251	27
Speed too fast	1,270	12	1,895	8	1,731	8	1,635	8	1,657	8
Speed too slow	14	0	20	0	18	0	20	1	13	0
Failed to yield	905	3	881	4	1,078	4	1,017	4	1,020	8
Disregard traffic control	173	1	167	4	173	2	180	0	179	3
Drove wrong way	9	0	8	0	11	0	12	0	8	1
Drove left of center	81	4	75	5	102	2	100	4	96	4
Improper passing	72	1	73	0	75	0	72	1	67	0
Improper lane use	109	0	127	0	141	1	152	0	146	0
Improper turn	82	0	71	0	94	0	89	0	85	0
Improper/no signal	24	0	31	1	33	0	27	0	27	0
Improper backing	172	0	171	0	195	0	191	0	182	0
Unable to stop in assured clear distance	878	1	954	3	1,122	1	1,146	1	1,058	3
Other	437	4	465	5	506	2	522	4	485	2
Unknown	216	7	250	9	275	2	286	8	449	4
Reckless driving	84	1	83	4	66	2	75	2	65	1
Careless/negligent driving	407	4	383	4	414	4	434	9	465	4
Uncoded & errors	11	0	5	0	1	0	1	1	1	0
<b>Total</b>	<b>10,412</b>	<b>63</b>	<b>11,486</b>	<b>84</b>	<b>12,443</b>	<b>43</b>	<b>12,511</b>	<b>71</b>	<b>12,254</b>	<b>65</b>

## Traffic Safety Network Southwest (continued)



The picture above represents all 2016 alcohol-involved fatal crashes in TSN Southwest.

In 2016, there were 350 alcohol-involved crashes in TSN Southwest:

7	K - Fatal Crashes
43	A - Suspected Serious Injury Crashes
38	B - Suspected Minor Injury Crashes
79	C - Possible Injury Crashes
183	O - Property Damage Only/No Injury Crashes

### Office of Highway Safety Planning

---

Physical Address:  
7150 Harris Drive  
Dimondale, Michigan 48821

Mailing Address:  
P.O. Box 30634  
Lansing, Michigan 48909

Phone: (517) 284-3112  
Fax: (517) 284-3151

Find us on the web:  
[MichiganTrafficCrashFacts.org](http://MichiganTrafficCrashFacts.org)

