



2016

MTCF
Michigan Traffic
Crash Facts

Michigan Traffic Crash Facts

Reporting Criteria

Please pay particular attention to the wording when interpreting the three levels of data gathered for this report.

Crash

The Crash Level analyzes data related to crash events and returns one result per crash.

Examples: Time, weather, and location.

Units

The Units Level analyzes the experience of the units in the crash and returns one result per vehicle, driver, pedestrian, bicyclist, or train.

Examples: Vehicle type, driver condition, and unit events.

People

The People Level analyzes the experience of the people involved in the crash and returns one result per occupant/person/party.

Examples: Age, injury severity, and seat belt or helmet use.

KABCO Injury Indicator:

K = Killed

A = Suspected Serious Injury

B = Suspected Minor Injury

C = Possible Injury

O = No Injury

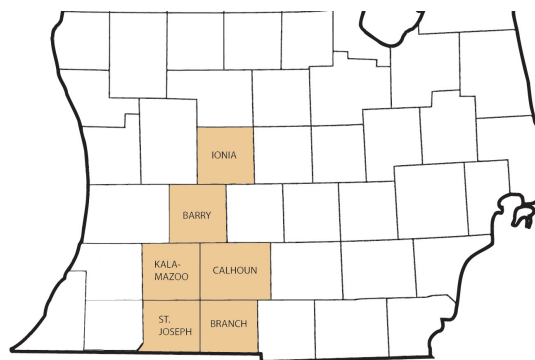
Property Damage Only (PDO)



Traffic Safety Network South Central

2016 Traffic Crash Data & 2012-2016 5-Year Trends

Traffic Safety Network South Central is comprised of Barry, Branch, Calhoun, Ionia, Kalamazoo, and St. Joseph counties. Trend tables for this report are based on those counties.



Sources:

The crashes in this report occurred on public roadways in Michigan and resulted in injuries, fatalities, or property damage (with \$1,000 as a reporting threshold). The information was gathered from Michigan Traffic Crash Report Forms (UD-10) submitted by local police departments, sheriff's offices, and the Michigan State Police. Other related information was obtained from the departments of Transportation, State, and Community Health.

This page left intentionally blank

TSN South Central Experience

In 2016:

There were 31,502 drivers involved in 19,832 motor vehicle crashes in Traffic Safety Network South Central. Of those crashes, 86 were classified as fatal, resulting in 92 fatalities. An additional 4,433 persons were injured.

Traffic Safety Network South Central experienced the highest number of motor vehicle crashes (2,416) in December, the highest number of fatal crashes (12) and the highest number of persons killed (12) in April.

Michigan driver statistics indicate 6.6 percent of licensed drivers in Traffic Safety Network South Central were age 16-20, and 11.7 percent of drivers in crashes were also in that age group.

2016 - Crashes and Injuries by Month

Month	Crashes				Persons	
	Total	Fatal	Injury	Property Damage Only (PDO)	Fatalities	Injuries
January	1,946	5	236	1,705	6	317
February	1,798	6	276	1,516	6	358
March	1,452	3	207	1,242	3	278
April	1,278	12	224	1,042	12	306
May	1,463	5	277	1,181	5	369
June	1,391	6	276	1,109	10	391
July	1,323	6	289	1,028	6	426
August	1,365	10	296	1,059	10	382
September	1,507	6	310	1,191	7	425
October	1,861	11	281	1,569	11	399
November	2,032	8	258	1,766	8	371
December	2,416	8	313	2,095	8	411
Total	19,832	86	3,243	16,503	92	4,433

2016 - Driver Statistics

Age Group	Statewide			Driver Rates	
	2016 Population	Licensed Drivers	Drivers in Crashes	Per 10k Population	Per 10k Licensed
0 - 15	1,923,244	49,678	59	0.3	11.9
16 - 20	672,666	471,135	3,697	55.0	78.5
21 - 24	570,792	470,489	3,379	59.2	71.8
25 - 64	5,149,843	4,748,323	18,905	36.7	39.8
65 +	1,611,755	1,437,067	3,160	19.6	22.0
Unknown	0	0	2,302	--	--
Total	9,928,300	7,176,692	31,502	31.7	43.9

2016 - Vehicles in Crashes

Vehicle Type	Motor Vehicles		Fatal Crashes		Injury Crashes	PDO Crashes
	Number of Vehicles	% of Total	Number	% of Total	Number	Number
Passenger car, SUV, van	25,129	79.8	85	64.4	4,389	20,655
Motor home	381	1.2	1	0.8	81	299
Pickup truck	3,781	12.0	20	15.2	634	3,127
Small truck under 10,000 lbs. GVWR	273	0.9	2	1.5	41	230
Motorcycle	247	0.8	11	8.3	172	64
Moped / goped	34	0.1	1	0.8	27	6
Go-cart / golf cart	3	0.0	0	0.0	3	0
Snowmobile	0	0.0	0	0.0	0	0
Off-Road Vehicle - ORV / All-Terrain Vehicle - ATV	10	0.0	0	0.0	6	4
Other	146	0.5	0	0.0	21	125
Truck/bus over 10,000 lbs.	875	2.8	12	9.1	145	718
Unknown	623	2.0	0	0.0	45	578
Total	31,502	100.0	132	100.0	5,564	25,806

Traffic Safety Network South Central (continued)

5-Year Trend - Crashes by Month

Month	2012		2013		2014		2015		2016	
	Total Crashes	Fatal Crashes	Total Crashes	Fatal Crashes	Total Crashes	Fatal Crashes	Total Crashes	Fatal Crashes	Total Crashes	Fatal Crashes
January	2,138	5	1,981	7	2,791	1	2,123	6	1,946	5
February	1,798	6	1,856	5	1,910	4	1,718	2	1,798	6
March	1,328	6	1,333	3	1,540	6	1,315	3	1,452	3
April	1,135	3	1,172	3	1,030	7	1,137	7	1,278	12
May	1,390	5	1,433	7	1,246	5	1,415	6	1,463	5
June	1,326	8	1,352	10	1,253	6	1,454	11	1,391	6
July	1,183	14	1,306	6	1,261	3	1,435	8	1,323	6
August	1,118	1	1,283	5	1,161	8	1,265	5	1,365	10
September	1,291	3	1,349	9	1,331	2	1,319	4	1,507	6
October	1,744	3	1,775	8	1,848	4	1,878	5	1,861	11
November	1,717	7	2,109	13	2,458	4	2,181	3	2,032	8
December	1,968	7	2,215	5	1,374	3	1,869	6	2,416	8
Total	18,136	68	19,164	81	19,203	53	19,109	66	19,832	86

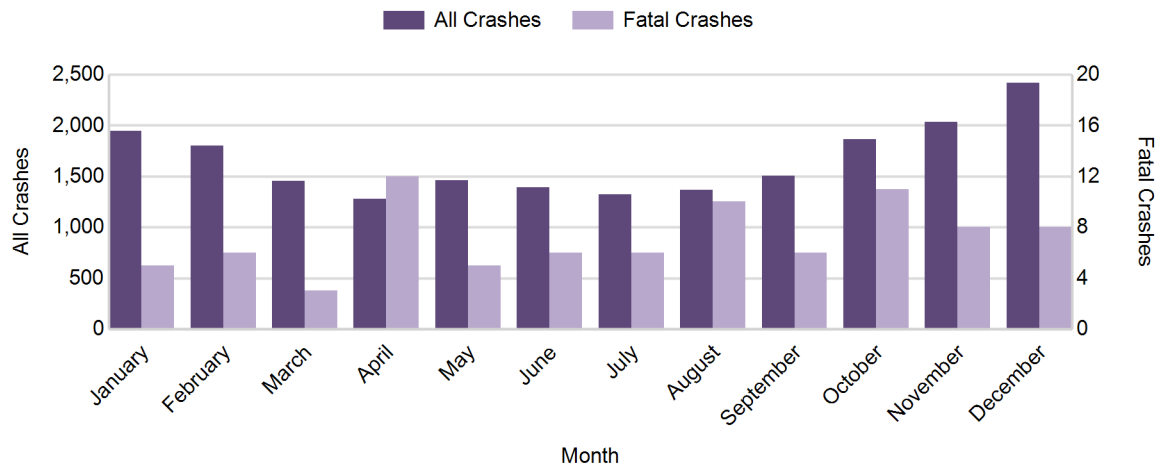
Note: † Indicates that the highest number of total crashes reported in the 5-year period occurred in the same month

5-Year Trend - Crashes by Day of Week

Day	2012		2013		2014		2015		2016	
	Total Crashes	Fatal Crashes	Total Crashes	Fatal Crashes	Total Crashes	Fatal Crashes	Total Crashes	Fatal Crashes	Total Crashes	Fatal Crashes
Monday	2,639	10	2,967	13	2,638	5	2,698	7	2,762	12
Tuesday	2,480	5	2,913	9	2,763	7	2,760	5	2,845	11
Wednesday	2,560	13	3,000	7	3,036	9	2,959	7	2,977	9
Thursday	2,538	11	2,794	12	3,219	9	2,768	11	3,136	11
Friday	3,385	12	2,995	12	3,161	5	3,226	12	3,403	15
Saturday	2,562	4	2,483	14	2,405	12	2,716	10	2,587	16
Sunday	1,972	13	2,012	14	1,981	6	1,982	14	2,122	12
Total	18,136	68	19,164	81	19,203	53	19,109	66	19,832	86

Note: † Indicates that the highest number of total crashes reported in the 5-year period occurred on the same day of the week

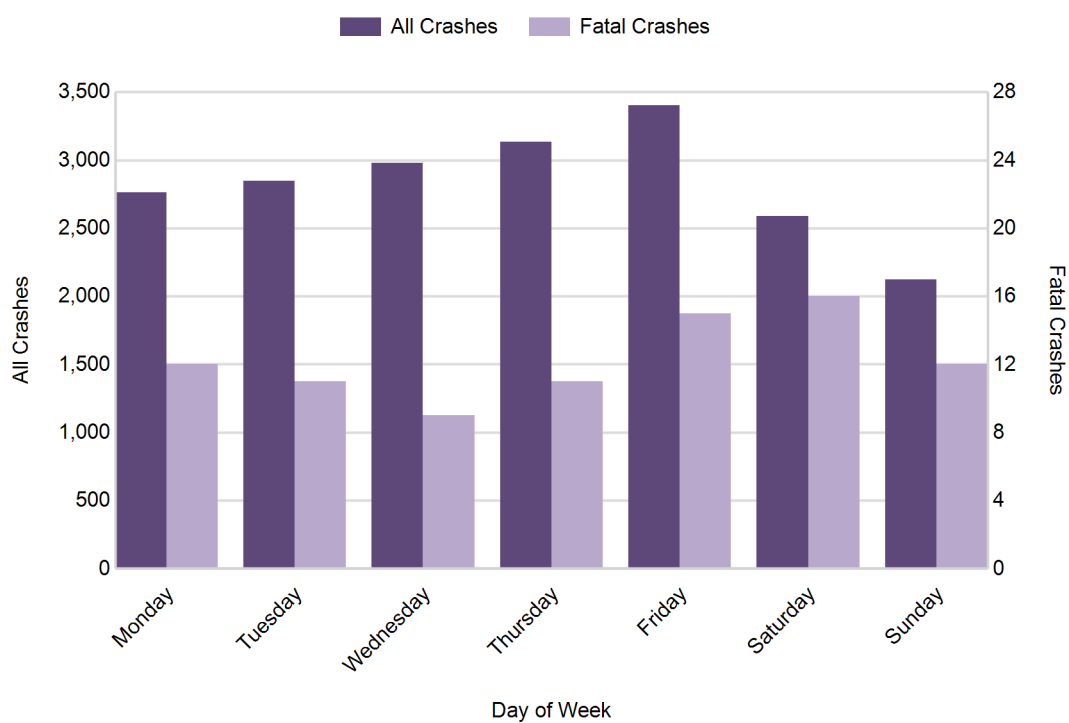
2016 Crashes by Month



2016 - Crashes by Day of Week

Day	All Crashes		Fatal Crashes		Injury Crashes			PDO Crashes
	Number	% of Total	Number	% of Fatal	A	B	C	Number
Monday	2,762	13.9	12	14.0	34	145	252	2,319
Tuesday	2,845	14.3	11	12.8	42	138	264	2,390
Wednesday	2,977	15.0	9	10.5	36	145	294	2,493
Thursday	3,136	15.8	11	12.8	46	156	299	2,624
Friday	3,403	17.2	15	17.4	53	180	328	2,827
Saturday	2,587	13.0	16	18.6	61	169	244	2,097
Sunday	2,122	10.7	12	14.0	49	125	183	1,753
Total	19,832	100.0	86	100.0	321	1,058	1,864	16,503

2016 Day of Week and Severity

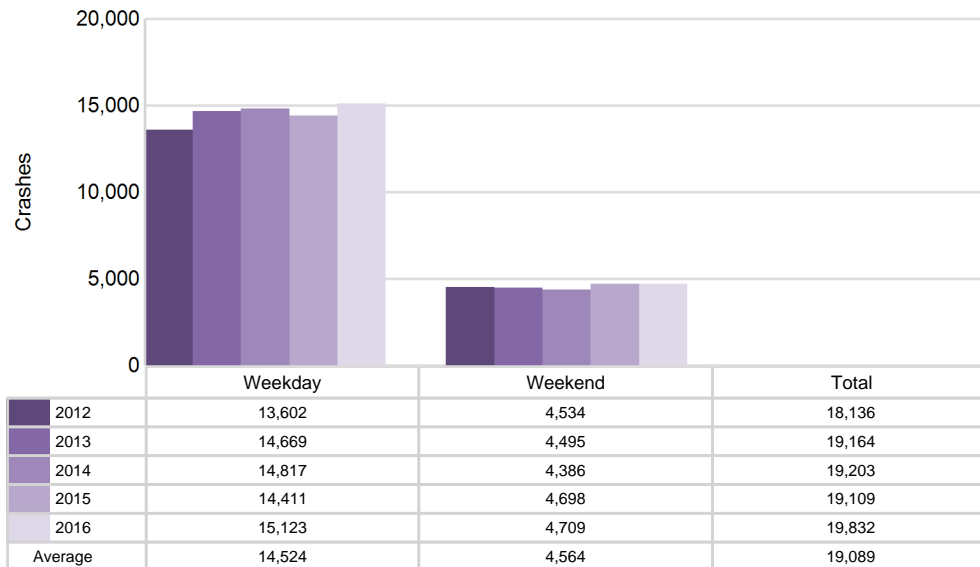


Traffic Safety Network South Central (continued)

5-Year Trend - Crashes by Weekday and Weekend

Portion of Week	2012		2013		2014		2015		2016	
	Total Crashes	Fatal Crashes	Total Crashes	Fatal Crashes	Total Crashes	Fatal Crashes	Total Crashes	Fatal Crashes	Total Crashes	Fatal Crashes
Weekday	13,602	51	14,669	53	14,817	35	14,411	42	15,123	58
Weekend	4,534	17	4,495	28	4,386	18	4,698	24	4,709	28
Total	18,136	68	19,164	81	19,203	53	19,109	66	19,832	86

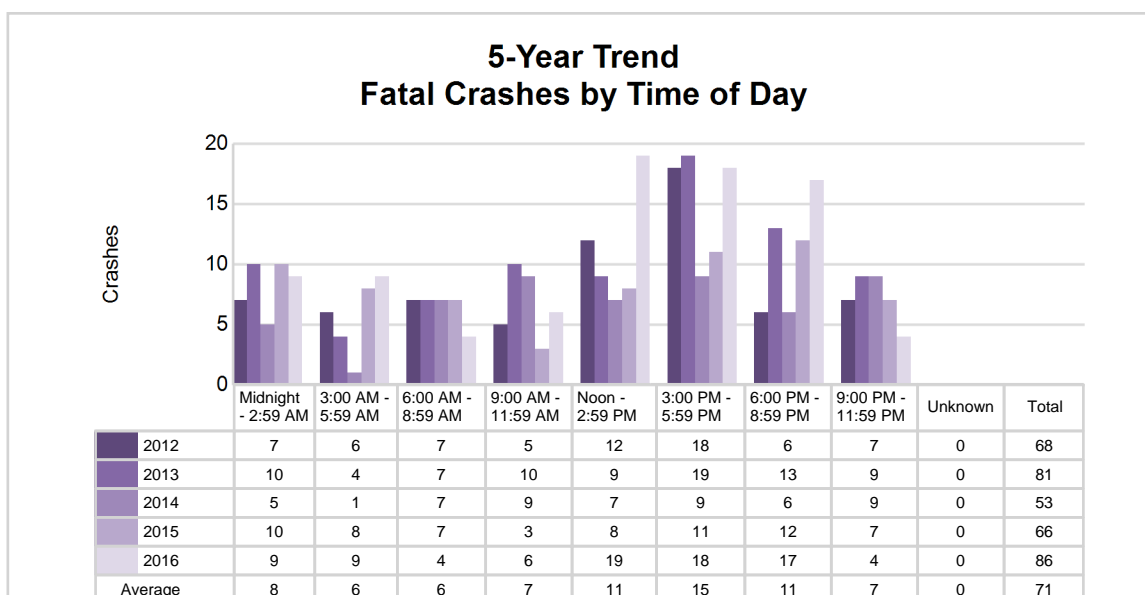
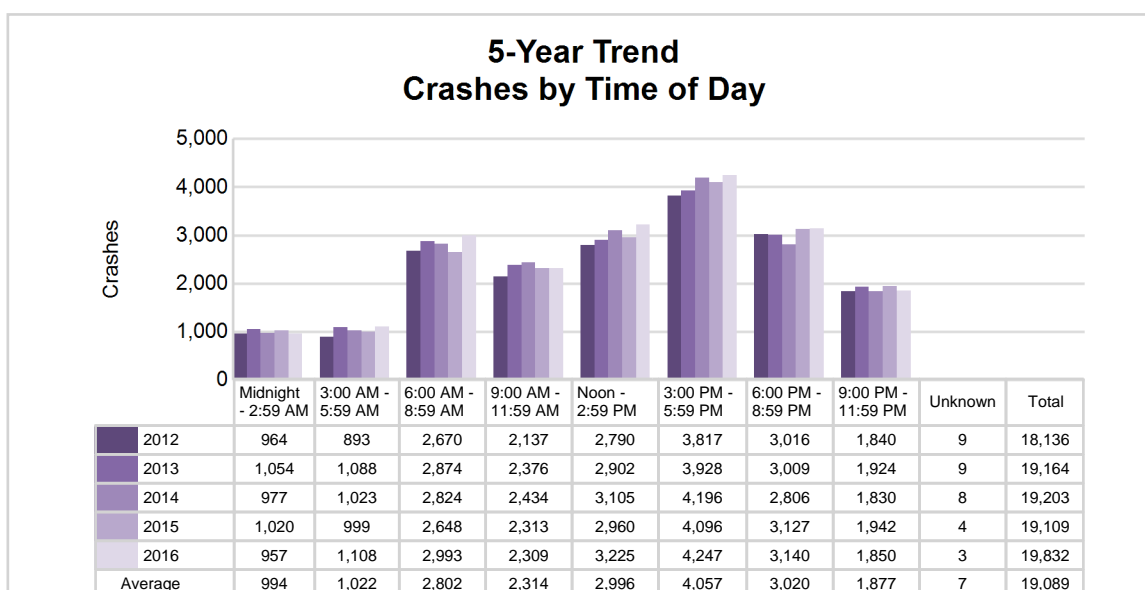
5-Year Crash Trends by Weekday (Monday - Friday) and Weekend (Saturday & Sunday)



5-Year Trend - Crashes by Time of Day

Time of Day	2012		2013		2014		2015		2016	
	Total Crashes	Fatal Crashes	Total Crashes	Fatal Crashes	Total Crashes	Fatal Crashes	Total Crashes	Fatal Crashes	Total Crashes	Fatal Crashes
Midnight - 2:59 AM	964	7	1,054	10	977	5	1,020	10	957	9
3:00 AM - 5:59 AM	893	6	1,088	4	1,023	1	999	8	1,108	9
6:00 AM - 8:59 AM	2,670	7	2,874	7	2,824	7	2,648	7	2,993	4
9:00 AM - 11:59 AM	2,137	5	2,376	10	2,434	9	2,313	3	2,309	6
Noon - 2:59 PM	2,790	12	2,902	9	3,105	7	2,960	8	3,225	19
3:00 PM - 5:59 PM	3,817 †	18	3,928 †	19	4,196 †	9	4,096 †	11	4,247 †	18
6:00 PM - 8:59 PM	3,016	6	3,009	13	2,806	6	3,127	12	3,140	17
9:00 PM - 11:59 PM	1,840	7	1,924	9	1,830	9	1,942	7	1,850	4
Unknown	9	0	9	0	8	0	4	0	3	0
Total	18,136	68	19,164	81	19,203	53	19,109	66	19,832	86

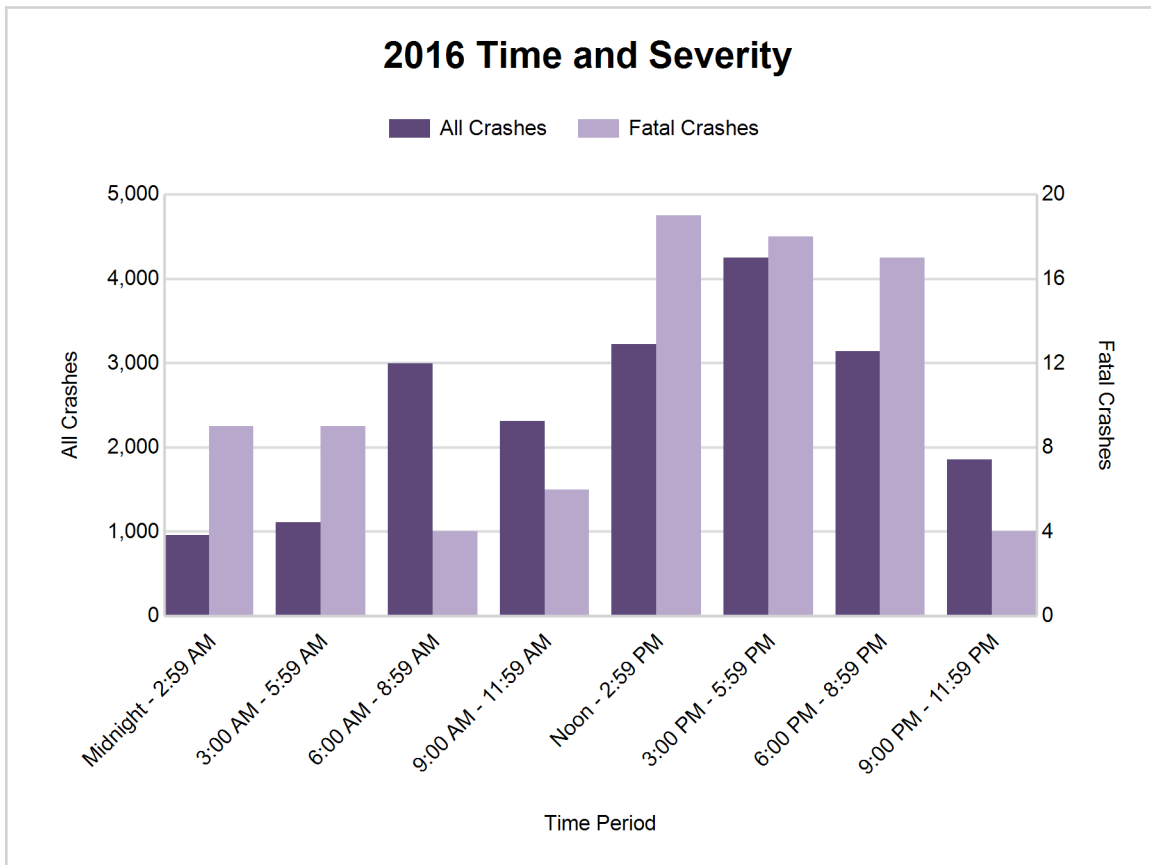
Note: † Indicates that the highest number of total crashes reported in the 5-year period occurred in the same time period



Traffic Safety Network South Central (continued)

2016 - Time and Severity

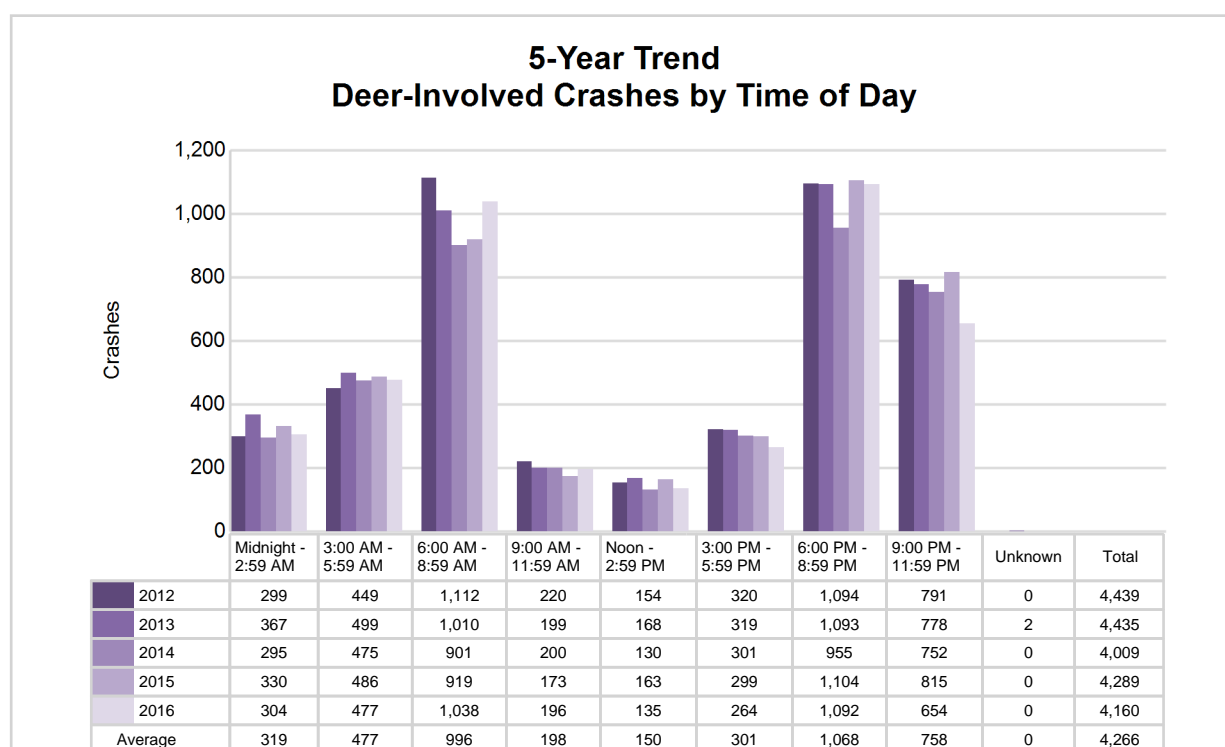
Time of Day	All Crashes		Fatal Crashes		Injury Crashes			PDO Crashes
	Number	% of Total	Number	% of Fatal	A	B	C	Number
Midnight - 2:59 AM	957	4.8	9	10.5	14	54	64	816
3:00 AM - 5:59 AM	1,108	5.6	9	10.5	15	57	57	970
6:00 AM - 8:59 AM	2,993	15.1	4	4.7	39	118	241	2,591
9:00 AM - 11:59 AM	2,309	11.6	6	7.0	32	148	252	1,871
Noon - 2:59 PM	3,225	16.3	19	22.1	54	175	365	2,612
3:00 PM - 5:59 PM	4,247	21.4	18	20.9	78	265	472	3,414
6:00 PM - 8:59 PM	3,140	15.8	17	19.8	49	143	254	2,677
9:00 PM - 11:59 PM	1,850	9.3	4	4.7	40	98	159	1,549
Unknown	3	0.0	0	0.0	0	0	0	3
Total	19,832	100.0	86	100.0	321	1,058	1,864	16,503



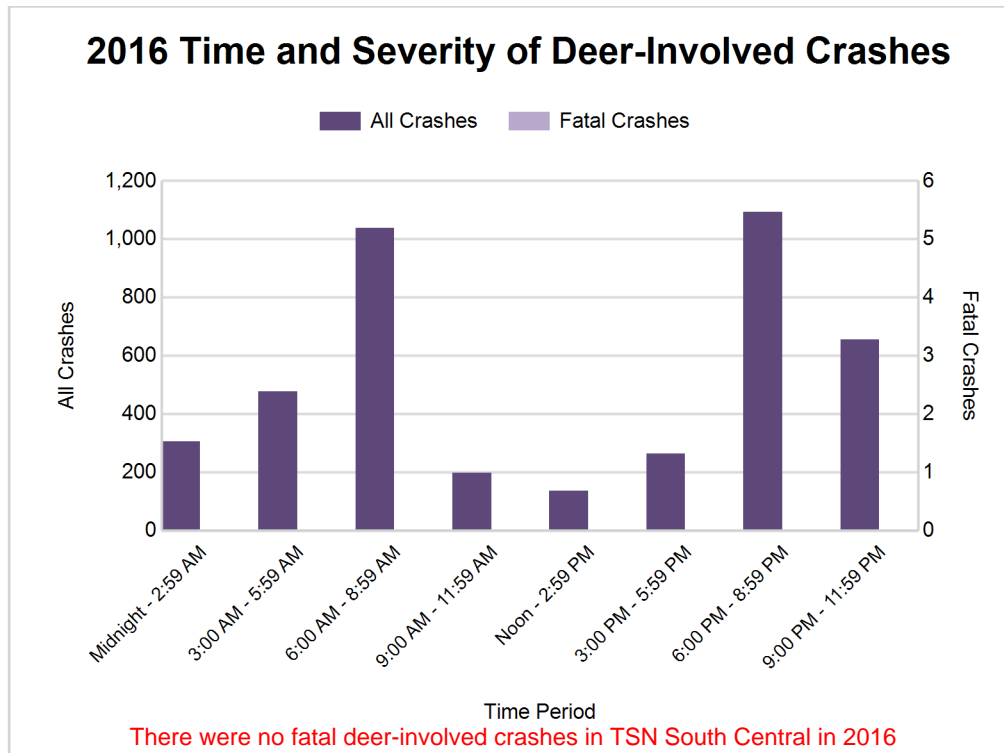
5-Year Trend - Deer-Involved Crashes by Time of Day

Time of Day	2012		2013		2014		2015		2016	
	Total Crashes	Fatal Crashes	Total Crashes	Fatal Crashes	Total Crashes	Fatal Crashes	Total Crashes	Fatal Crashes	Total Crashes	Fatal Crashes
Midnight - 2:59 AM	299	0	367	0	295	0	330	1	304	0
3:00 AM - 5:59 AM	449	0	499	1	475	0	486	0	477	0
6:00 AM - 8:59 AM	1,112	0	1,010	0	901	0	919	0	1,038	0
9:00 AM - 11:59 AM	220	0	199	0	200	0	173	0	196	0
Noon - 2:59 PM	154	0	168	0	130	0	163	0	135	0
3:00 PM - 5:59 PM	320	0	319	0	301	0	299	1	264	0
6:00 PM - 8:59 PM	1,094	0	1,093	2	955	0	1,104	0	1,092	0
9:00 PM - 11:59 PM	791	0	778	0	752	0	815	1	654	0
Unknown	0	0	2	0	0	0	0	0	0	0
Total	4,439	0	4,435	3	4,009	0	4,289	3	4,160	0

Note: † Indicates that the highest number of total crashes reported in the 5-year period occurred in the same time period



Traffic Safety Network South Central (continued)



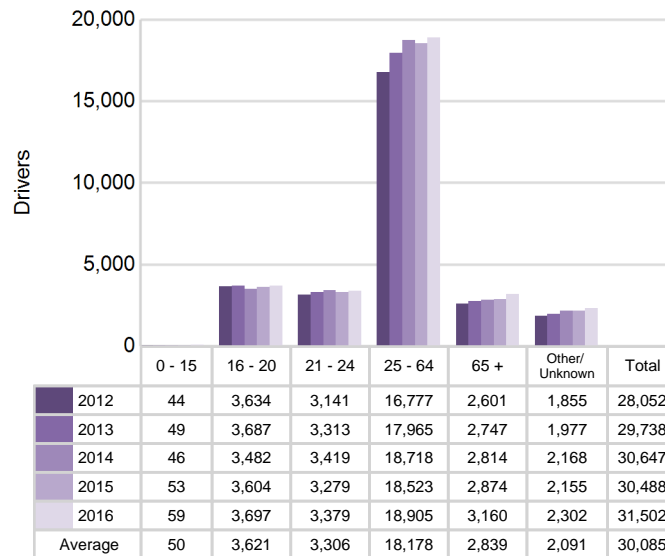
2016 - Reported Motor Vehicle Crashes by County

County	Crashes											Persons	
	Total	Fatal	Injury	Property Damage	Inter-state	US Route	State Route	Local Street	Alcohol-Involved	Drug-Involved	Deer-Involved	Fatalities	Injuries
Barry	1,563	4	233	1,326	0	0	611	951	77	14	610	4	323
Branch	1,605	8	199	1,398	159	389	83	971	28	8	761	9	269
Calhoun	4,734	25	694	4,015	1,165	0	1,244	2,318	171	60	1,056	26	947
Ionia	1,663	7	260	1,396	346	0	524	791	44	25	471	7	370
Kalamazoo	8,591	31	1,556	7,004	1,332	546	1,512	5,192	290	53	806	35	2,097
St. Joseph	1,676	11	301	1,364	0	374	406	891	73	20	456	11	427
Total	19,832	86	3,243	16,503	3,002	1,309	4,380	11,114	683	180	4,160	92	4,433

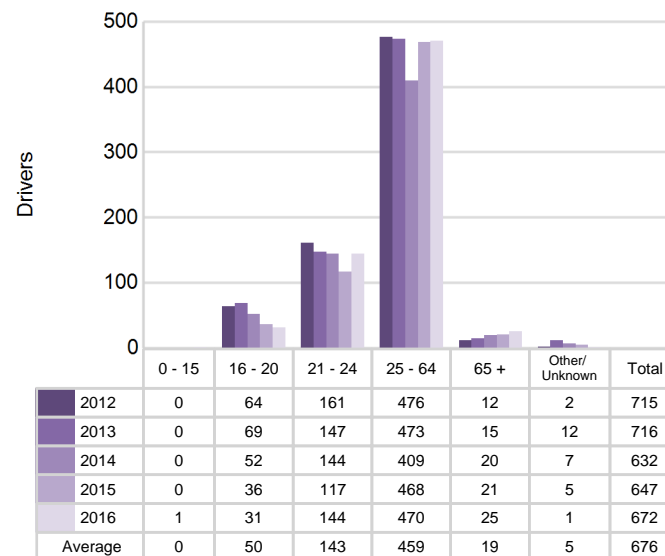
5-Year Trend - Drivers in Crashes Coded Drinking by Driver Age

Driver Age	2012		2013		2014		2015		2016	
	Total Drivers in Crashes	Total Drivers Coded Drinking	Total Drivers in Crashes	Total Drivers Coded Drinking	Total Drivers in Crashes	Total Drivers Coded Drinking	Total Drivers in Crashes	Total Drivers Coded Drinking	Total Drivers in Crashes	Total Drivers Coded Drinking
0 - 15	44	0	49	0	46	0	53	0	59	1
16 - 20	3,634	64	3,687	69	3,482	52	3,604	36	3,697	31
21 - 24	3,141	161	3,313	147	3,419	144	3,279	117	3,379	144
25 - 64	16,777	476	17,965	473	18,718	409	18,523	468	18,905	470
65 +	2,601	12	2,747	15	2,814	20	2,874	21	3,160	25
Unknown	1,855	2	1,977	12	2,168	7	2,155	5	2,302	1
Total	28,052	715	29,738	716	30,647	632	30,488	647	31,502	672

**5-Year Trend
Total Drivers in Crashes by Age**



**5-Year Trend
Total Drivers Coded Drinking by Age**



Traffic Safety Network South Central (continued)

2016 - Bodily Alcohol Concentration (BAC) Results Among All Vehicle Drivers in Alcohol-Involved Crashes by Age

Age Group	Drivers				BAC Result Range for Drivers Coded Drinking				
	Total Drivers in Alcohol-Involved Crashes	Total Drivers Tested in all Crashes	Total Drivers Coded Drinking, Tested	Total Drivers Coded Drinking	BAC = 0.00	BAC 0.01 g/dL to 0.07 g/dL	BAC 0.08 g/dL to 0.16 g/dL	BAC 0.17 g/dL and Above	BAC Not Reported
0 - 15	2	2	1	1	0	1	0	0	0
16 - 20	46	70	26	31	0	5	10	3	13
21 - 24	174	151	131	144	4	12	53	40	35
25 - 64	609	539	397	470	13	24	122	138	173
65 +	41	44	24	25	0	5	12	3	5
Unknown	41	5	0	1	0	0	0	0	1
Total	913	811	579	672	17	47	197	184	227

Notes: BAC measured in grams (g) per deciliter (dL).

BAC may not be reported if drivers are not tested or if the results are not available immediately (as in the case of a blood test).

A driver may be coded by the officer as drinking even though no test is administered.

Alcohol-Involved Crashes

In 2016, there were 913 drivers in alcohol-involved crashes; 672 (73.6%) of those drivers were coded as had-been-drinking by the officer on the crash form.

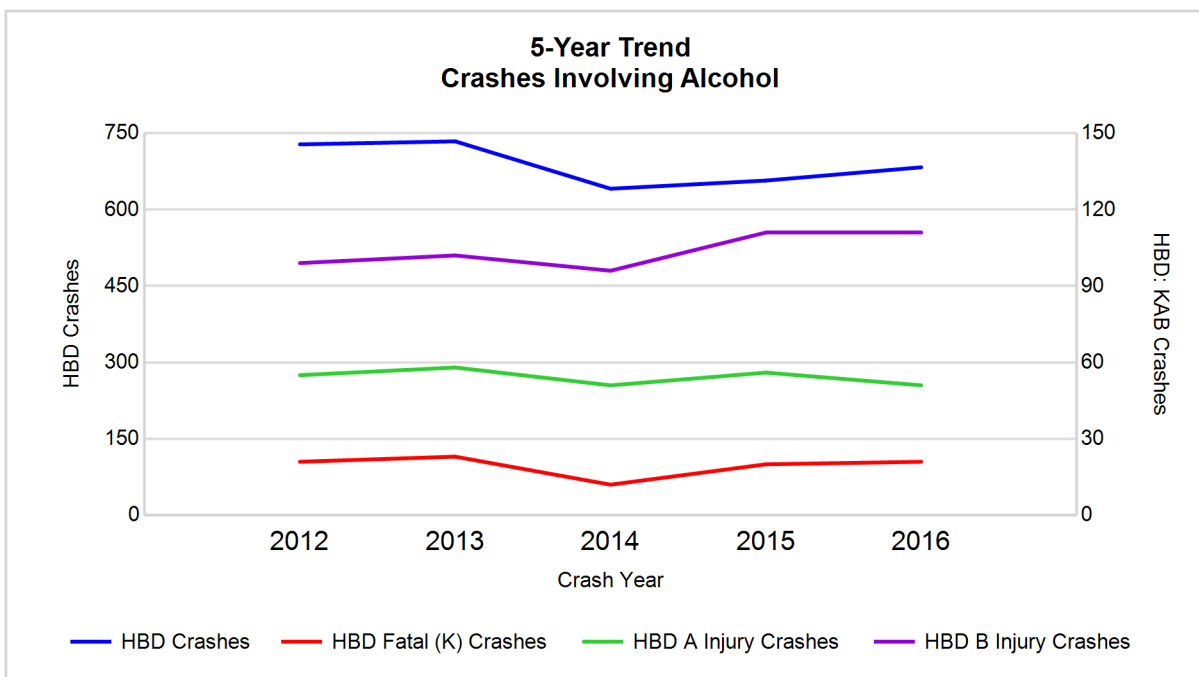
- 381 (56.7%) of the 672 drivers had a blood alcohol concentration (BAC) of 0.08 g/dL (grams per deciliter) or greater, and 184 (48.3%) of the 381 drivers had a BAC at or above 0.17 g/dL.
- 579 (86.2%) of the 672 drivers were coded as had-been-drinking and were tested for alcohol consumption.

5-Year Trend - Crashes Involving Alcohol

Year	All Crashes	HBD Crashes	% HBD	Fatal Crashes	HBD Fatal Crashes	% HBD	A Injury Crashes	HBD A Injury Crashes	% HBD	B Injury Crashes	HBD B Injury Crashes	% HBD
2012	18,136	728	4.0	68	21	30.9	302	55	18.2	845	99	11.7
2013	19,164	734	3.8	81	23	28.4	311	58	18.6	842	102	12.1
2014	19,203	641	3.3	53	12	22.6	297	51	17.2	845	96	11.4
2015	19,109	657	3.4	66	20	30.3	287	56	19.5	922	111	12.0
2016	19,832**	683	3.4	86**	21	24.4	321**	51	15.9*	1,058**	111	10.5*

Note: * Indicates that the most recent year is the lowest number or percentage reported in the 5-year period in that column

** Indicates that the most recent year is the highest number or percentage reported in the 5-year period in that column



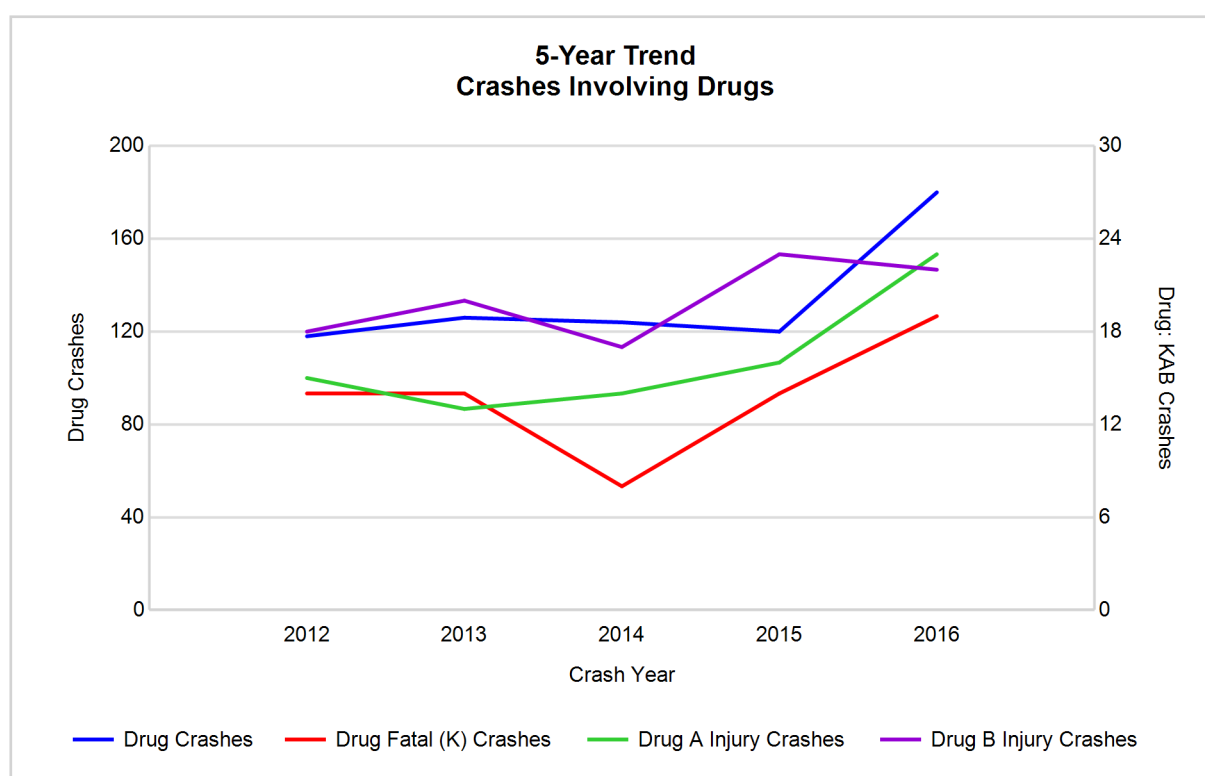
Note: Had-Been-Drinking (HBD)

5-Year Trend - Crashes Involving Drugs

Year	All Crashes	Drug Crashes	% Drug	Fatal Crashes	Drug Fatal Crashes	% Drug	A Injury Crashes	Drug A Injury Crashes	% Drug	B Injury Crashes	Drug B Injury Crashes	% Drug
2012	18,136	118	0.7	68	14	20.6	302	15	5.0	845	18	2.1
2013	19,164	126	0.7	81	14	17.3	311	13	4.2	842	20	2.4
2014	19,203	124	0.6	53	8	15.1	297	14	4.7	845	17	2.0
2015	19,109	120	0.6	66	14	21.2	287	16	5.6	922	23	2.5
2016	19,832**	180**	0.9**	86**	19**	22.1**	321**	23**	7.2**	1,058**	22	2.1

Note: * Indicates that the most recent year is the lowest number or percentage reported in the 5-year period in that column

** Indicates that the most recent year is the highest number or percentage reported in the 5-year period in that column



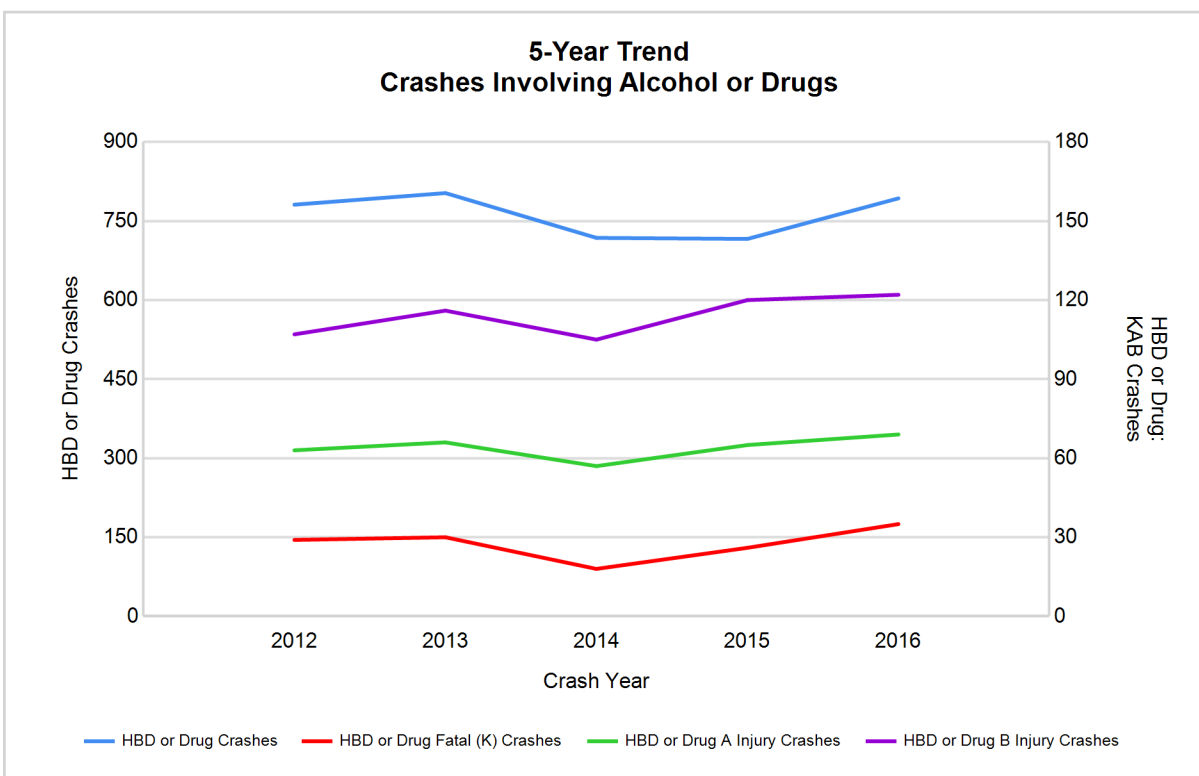
Traffic Safety Network South Central (continued)

5-Year Trend - Crashes Involving Alcohol or Drugs

Year	All Crashes	HBD or Drug Crashes	% HBD or Drug	Fatal Crashes	HBD or Drug Fatal Crashes	% HBD or Drug	A Injury Crashes	HBD or Drug A Injury Crashes	% HBD or Drug	B Injury Crashes	HBD or Drug B Injury Crashes	% HBD or Drug
2012	18,136	781	4.3	68	29	42.6	302	63	20.9	845	107	12.7
2013	19,164	803	4.2	81	30	37.0	311	66	21.2	842	116	13.8
2014	19,203	718	3.7	53	18	34.0	297	57	19.2	845	105	12.4
2015	19,109	716	3.7	66	26	39.4	287	65	22.6	922	120	13.0
2016	19,832**	793	4.0	86**	35**	40.7	321**	69**	21.5	1,058**	122**	11.5*

Note: * Indicates that the most recent year is the lowest number or percentage reported in the 5-year period in that column

** Indicates that the most recent year is the highest number or percentage reported in the 5-year period in that column



Note: Had-Been-Drinking (HBD)

Traffic Safety Network South Central (continued)

13

2016 - Restraints Worn Among Vehicle Drivers and Injured Passengers by Vehicle Type

Vehicle Type	Total Occupants			Fatalities			A - Suspected Serious			B - Suspected Minor			C - Possible Injury			No Injury		
	Total	Used Restraint	%	Total	Used Restraint	%	Total	Used Restraint	%	Total	Used Restraint	%	Total	Used Restraint	%	Total	Used Restraint	%
Passenger car, SUV, van	26,113	23,369	89.5	50	34	68.0	270	224	83.0	947	848	89.5	2,249	2,106	93.6	21,351	20,143	94.3
Motor home	405	357	88.1	0	0	0.0	0	0	0.0	23	19	82.6	38	35	92.1	317	303	95.6
Pickup truck	3,861	3,466	89.8	12	3	25.0	35	25	71.4	133	118	88.7	200	187	93.5	3,293	3,131	95.1
Small truck under 10,000 lbs. GVWR	285	256	89.8	1	0	0.0	2	2	100.0	11	11	100.0	18	17	94.4	241	226	93.8
Motorcycle	275	156	56.7	11	6	54.5	55	24	43.6	94	58	61.7	40	29	72.5	65	39	60.0
Moped / goped	34	6	17.6	1	0	0.0	6	0	0.0	13	1	7.7	7	3	42.9	7	2	28.6
Go-cart / golf cart	3	1	33.3	0	0	0.0	1	0	0.0	0	0	0.0	1	0	0.0	1	1	100.0
Snowmobile	0	0	0.0	0	0	0.0	0	0	0.0	0	0	0.0	0	0	0.0	0	0	0.0
Off-Road Vehicle - ORV / All-Terrain Vehicle - ATV	12	2	16.7	0	0	0.0	3	1	33.3	2	0	0.0	0	0	0.0	5	1	20.0
Other	147	92	62.6	0	0	0.0	0	0	0.0	5	1	20.0	6	3	50.0	117	88	75.2
Truck/bus over 10,000 lbs.	896	804	89.7	1	1	100.0	7	6	85.7	18	12	66.7	41	28	68.3	808	757	93.7
Unknown	623	4	0.6	0	0	0.0	0	0	0.0	1	1	100.0	0	0	0.0	13	3	23.1
Total	32,654	28,513	87.3	76	44	57.9	379	282	74.4	1,247	1,069	85.7	2,600	2,408	92.6	26,218	24,694	94.2

Note: Restraint Use includes shoulder belt only used, lap belt only used, both lap and shoulder belts used, child restraint used, restraint failure, and helmet worn.

2016 - Restraints Worn Among Vehicle Drivers and Injured Passengers by Age

Age Group	Total Occupants			Fatalities			A - Suspected Serious			B - Suspected Minor			C - Possible Injury			No Injury		
	Total	Used Restraint	%	Total	Used Restraint	%	Total	Used Restraint	%	Total	Used Restraint	%	Total	Used Restraint	%	Total	Used Restraint	%
0 - 15	356	295	82.9	2	1	50.0	14	12	85.7	95	77	81.1	203	172	84.7	42	33	78.6
16 - 20	3,878	3,672	94.7	10	7	70.0	56	43	76.8	171	150	87.7	344	328	95.3	3,291	3,143	95.5
21 - 24	3,477	3,216	92.5	6	2	33.3	47	36	76.6	154	126	81.8	258	233	90.3	3,005	2,818	93.8
25 - 64	19,358	18,161	93.8	42	26	61.9	218	156	71.6	669	567	84.8	1,529	1,418	92.7	16,851	15,988	94.9
65 +	3,282	3,147	95.9	16	8	50.0	44	35	79.5	156	148	94.9	261	257	98.5	2,794	2,695	96.5
Unknown	2,303	22	1.0	0	0	0.0	0	0	0.0	2	1	50.0	5	0	0.0	235	17	7.2
Total	32,654	28,513	87.3	76	44	57.9	379	282	74.4	1,247	1,069	85.7	2,600	2,408	92.6	26,218	24,694	94.2

Note: Restraint Use includes shoulder belt only used, lap belt only used, both lap and shoulder belts used, child restraint used, restraint failure, and helmet worn.

Traffic Safety Network South Central (continued)

5-Year Trend - Restraint Use Among Drivers

Restraint Use	2012			2013			2014			2015			2016		
	Drivers	Fatal Drivers	Injured Drivers	Drivers	Fatal Drivers	Injured Drivers	Drivers	Fatal Drivers	Injured Drivers	Drivers	Fatal Drivers	Injured Drivers	Drivers	Fatal Drivers	Injured Drivers
No belts available	166	1	32	130	0	19	136	1	20	165	1	17	80	1	12
Shoulder belt only used	59	0	0	64	0	10	195	0	7	120	0	8	137	1	15
Lap belt only used	76	0	8	94	1	9	88	0	12	117	1	11	101	0	16
Both lap & shoulder belts used	24,641	16	2,300	26,098	25	2,453	26,649	15	2,398	26,390	24	2,422	27,139	26	2,657
No belts used	209	13	95	197	16	74	204	13	74	187	12	69	181	16	69
Child restraint used	1	0	0	0	0	0	1	0	0	1	0	0	4	0	0
Child restraint not used, unavailable or improper use	1	0	0	0	0	0	1	0	0	0	0	0	0	0	0
Restraint failure	15	0	1	4	0	1	5	0	0	9	0	1	4	1	0
Restraint use unknown	870	7	78	1,056	9	104	1,144	3	89	1,209	4	115	2,962	5	129
Helmet worn	205	8	159	205	7	149	165	4	105	182	4	136	151	6	104
Helmet not worn	108	3	84	92	6	68	90	1	73	107	8	72	120	6	75
Helmet use unknown	12	0	6	14	1	6	16	0	6	22	0	7	16	0	10
Uncoded & errors	1,689	0	4	1,784	0	2	1,953	0	6	1,979	0	7	607	0	1
Total	28,052	48	2,767	29,738	65	2,895	30,647	37	2,790	30,488	54	2,865	31,502	62	3,088

5-Year Trend - Restraint Use Among Drivers Coded Drinking

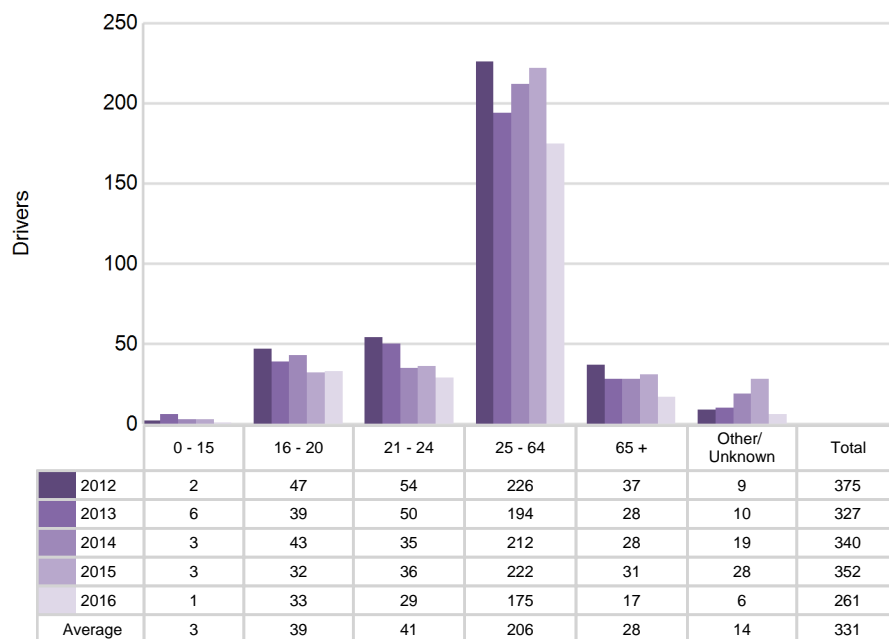
Restraint Use	2012			2013			2014			2015			2016		
	Drivers	Fatal Drivers	Injured Drivers	Drivers	Fatal Drivers	Injured Drivers	Drivers	Fatal Drivers	Injured Drivers	Drivers	Fatal Drivers	Injured Drivers	Drivers	Fatal Drivers	Injured Drivers
No belts available	4	1	2	4	0	3	4	0	1	3	1	1	1	1	0
Shoulder belt only used	4	0	0	4	0	0	1	0	0	2	0	2	8	1	0
Lap belt only used	1	0	0	1	0	1	2	0	1	2	0	0	2	0	1
Both lap & shoulder belts used	511	3	123	503	3	133	469	3	113	443	4	122	494	3	138
No belts used	55	4	39	43	9	25	40	2	23	45	4	26	25	6	16
Child restraint used	0	0	0	0	0	0	0	0	0	0	0	0	0	0	0
Child restraint not used, unavailable or improper use	0	0	0	0	0	0	0	0	0	0	0	0	0	0	0
Restraint failure	2	0	0	0	0	0	0	0	0	1	0	0	1	1	0
Restraint use unknown	102	2	22	138	4	33	91	1	24	122	1	32	116	0	30
Helmet worn	18	2	13	8	0	6	8	0	7	9	3	5	5	1	4
Helmet not worn	15	1	13	8	1	7	11	1	10	16	4	11	18	2	13
Helmet use unknown	0	0	0	1	0	1	2	0	1	1	0	1	1	0	1
Uncoded & errors	3	0	1	6	0	0	4	0	0	3	0	0	1	0	0
Total	715	13	213	716	17	209	632	7	180	647	17	200	672	15	203

5-Year Trend - Seatbelt Not Used Among Drivers by Age

Age Group	2012			2013			2014			2015			2016		
	Drivers	Fatal Drivers	Injured Drivers	Drivers	Fatal Drivers	Injured Drivers	Drivers	Fatal Drivers	Injured Drivers	Drivers	Fatal Drivers	Injured Drivers	Drivers	Fatal Drivers	Injured Drivers
0 - 15	2	0	1	6	0	1	3	0	0	3	0	1	1	0	1
16 - 20	47	3	16	39	0	17	43	3	11	32	1	8	33	3	11
21 - 24	54	3	30	50	2	18	35	2	10	36	0	15	29	1	10
25 - 64	226	8	71	194	10	53	212	6	62	222	7	56	175	9	58
65 +	37	0	9	28	4	4	28	3	10	31	5	6	17	4	1
Unknown	9	0	0	10	0	0	19	0	1	28	0	0	6	0	0
Total	375	14	127	327	16	93	340	14	94	352	13	86	261	17	81

Note: Seatbelt Not Used includes no belts available or no belts used.

5-Year Trend Driver Seatbelt Not Used



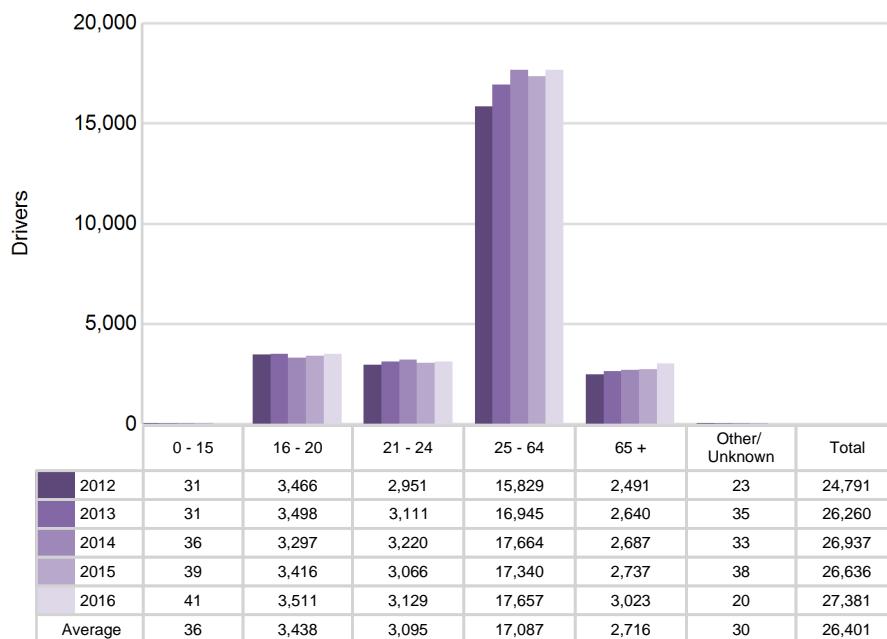
Traffic Safety Network South Central (continued)

5-Year Trend - Seatbelt Used Among Drivers by Age

Age Group	2012			2013			2014			2015			2016		
	Drivers	Fatal Drivers	Injured Drivers	Drivers	Fatal Drivers	Injured Drivers	Drivers	Fatal Drivers	Injured Drivers	Drivers	Fatal Drivers	Injured Drivers	Drivers	Fatal Drivers	Injured Drivers
0 - 15	31	0	1	31	0	0	36	0	3	39	0	4	41	0	8
16 - 20	3,466	0	325	3,498	2	371	3,297	0	335	3,416	3	341	3,511	4	363
21 - 24	2,951	2	288	3,111	2	273	3,220	2	273	3,066	3	269	3,129	0	310
25 - 64	15,829	10	1,441	16,945	10	1,529	17,664	8	1,549	17,340	14	1,556	17,657	19	1,687
65 +	2,491	4	253	2,640	12	298	2,687	5	254	2,737	5	271	3,023	5	320
Unknown	23	0	1	35	0	2	33	0	3	38	0	1	20	0	0
Total	24,791	16	2,309	26,260	26	2,473	26,937	15	2,417	26,636	25	2,442	27,381	28	2,688

Note: Seatbelt Used includes shoulder belt only used, lap belt only used, both lap and shoulder belts used, and restraint failure.

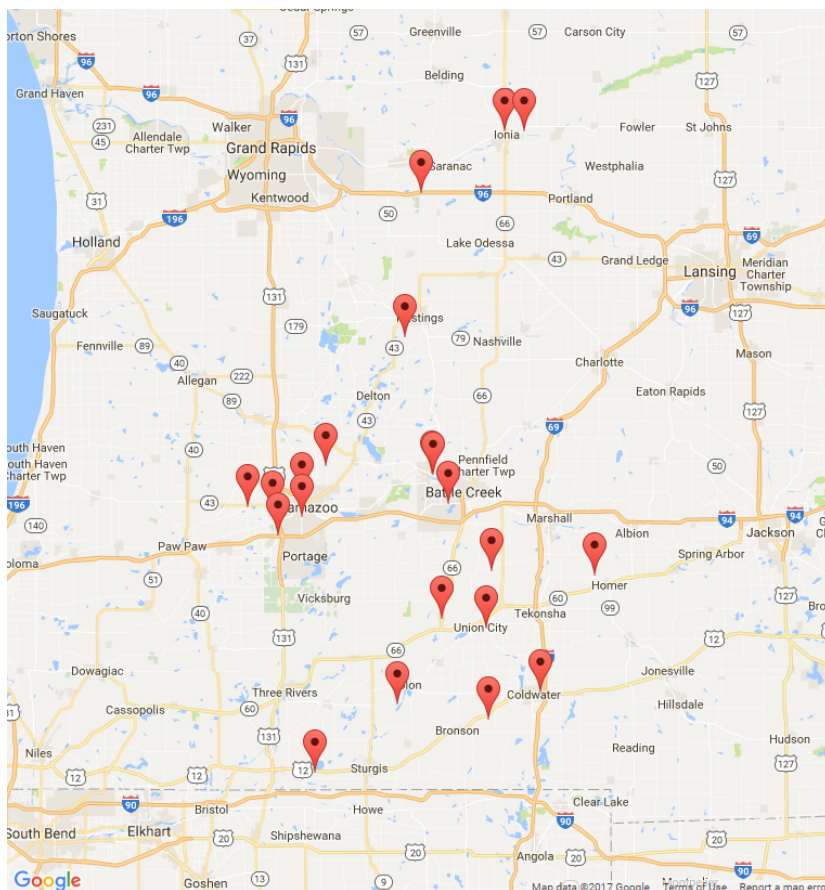
5-Year Trend Driver Seatbelt Used



5-Year Trend - Drivers in Crashes by Hazardous Action

Hazardous Action	2012		2013		2014		2015		2016	
	Total Drivers in Crashes	Drivers in Fatal Crashes	Total Drivers in Crashes	Drivers in Fatal Crashes	Total Drivers in Crashes	Drivers in Fatal Crashes	Total Drivers in Crashes	Drivers in Fatal Crashes	Total Drivers in Crashes	Drivers in Fatal Crashes
None	15,355	44	16,271	43	16,737	31	17,017	74	16,814	56
Speed too fast	2,355	7	2,785	20	2,814	10	2,500	34	2,733	15
Speed too slow	29	0	26	0	22	0	23	0	20	0
Failed to yield	2,170	7	2,212	10	2,485	10	2,484	8	2,576	10
Disregard traffic control	593	4	630	4	611	1	661	2	653	9
Drove wrong way	13	0	18	0	18	0	31	0	17	0
Drove left of center	154	10	157	9	154	3	171	5	177	5
Improper passing	132	1	165	0	156	2	148	0	159	1
Improper lane use	525	1	495	0	621	0	576	1	635	0
Improper turn	336	1	321	0	323	1	322	0	356	0
Improper/no signal	50	0	57	0	38	0	38	1	22	0
Improper backing	463	0	483	0	517	0	460	0	525	0
Unable to stop in assured clear distance	3,291	4	3,541	2	3,530	3	3,560	13	3,761	4
Other	1,036	12	1,095	4	1,143	5	1,038	4	1,055	7
Unknown	412	10	480	9	494	9	446	4	869	12
Reckless driving	163	3	152	3	138	0	138	3	172	7
Careless/negligent driving	778	6	782	7	778	5	846	9	916	6
Uncoded & errors	197	0	68	1	68	0	29	0	42	0
Total	28,052	110	29,738	112	30,647	80	30,488	158	31,502	132

Traffic Safety Network South Central (continued)



The picture above represents all 2016 alcohol-involved fatal crashes in TSN South Central.

In 2016, there were 683 alcohol-involved crashes in TSN South Central:

21	K - Fatal Crashes
51	A - Suspected Serious Injury Crashes
111	B - Suspected Minor Injury Crashes
103	C - Possible Injury Crashes
397	O - Property Damage Only/No Injury Crashes

Office of Highway Safety Planning

Physical Address:
7150 Harris Drive
Dimondale, Michigan 48821

Mailing Address:
P.O. Box 30634
Lansing, Michigan 48909

Phone: (517) 284-3112
Fax: (517) 284-3151

Find us on the web:
MichiganTrafficCrashFacts.org

