



2016

MTCF
Michigan Traffic
Crash Facts

Michigan Traffic Crash Facts

Reporting Criteria

Please pay particular attention to the wording when interpreting the three levels of data gathered for this report.

Crash

The Crash Level analyzes data related to crash events and returns one result per crash.

Examples: Time, weather, and location.

Units

The Units Level analyzes the experience of the units in the crash and returns one result per vehicle, driver, pedestrian, bicyclist, or train.

Examples: Vehicle type, driver condition, and unit events.

People

The People Level analyzes the experience of the people involved in the crash and returns one result per occupant/person/party.

Examples: Age, injury severity, and seat belt or helmet use.

KABCO Injury Indicator:

K = Killed

A = Suspected Serious Injury

B = Suspected Minor Injury

C = Possible Injury

O = No Injury

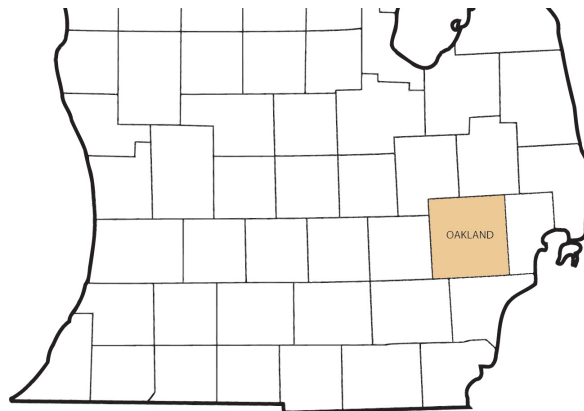
Property Damage Only (PDO)



Traffic Safety Network Oakland County/TIA Early Birds

2016 Traffic Crash Data & 2012-2016 5-Year Trends

Traffic Safety NetworkOakland County/TIA Early Birds is comprised of and Oakland counties. Trend tables for this report are based on those counties.



Sources:

The crashes in this report occurred on public roadways in Michigan and resulted in injuries, fatalities, or property damage (with \$1,000 as a reporting threshold). The information was gathered from Michigan Traffic Crash Report Forms (UD-10) submitted by local police departments, sheriff's offices, and the Michigan State Police. Other related information was obtained from the departments of Transportation, State, and Community Health.

This page left intentionally blank

Traffic Safety Network Oakland County/TIA Early Birds

1

TSN Oakland County/TIA Early Birds Experience

In 2016:

There were 82,738 drivers involved in 42,660 motor vehicle crashes in Traffic Safety Network Oakland County/TIA Early Birds. Of those crashes, 78 were classified as fatal, resulting in 80 fatalities. An additional 11,170 persons were injured.

Traffic Safety Network Oakland County/TIA Early Birds experienced the highest number of motor vehicle crashes (4,314) in December, the highest number of fatal crashes (10) and the highest number of persons killed (11) in October.

Michigan driver statistics indicate 6.6 percent of licensed drivers in Traffic Safety Network Oakland County/TIA Early Birds were age 16-20, and 10.6 percent of drivers in crashes were also in that age group.

2016 - Crashes and Injuries by Month

Month	Crashes				Persons	
	Total	Fatal	Injury	Property Damage Only (PDO)	Fatalities	Injuries
January	3,592	3	613	2,976	3	803
February	3,447	2	548	2,897	2	717
March	3,300	3	652	2,645	4	888
April	3,106	8	607	2,491	8	851
May	3,399	6	721	2,672	6	1,013
June	3,626	5	785	2,836	5	1,075
July	3,161	9	690	2,462	9	939
August	3,545	9	731	2,805	9	1,018
September	3,661	9	749	2,903	9	1,006
October	3,848	10	762	3,076	11	1,031
November	3,661	5	634	3,022	5	850
December	4,314	9	726	3,579	9	979
Total	42,660	78	8,218	34,364	80	11,170

2016 - Driver Statistics

Age Group	Statewide			Driver Rates	
	2016 Population	Licensed Drivers	Drivers in Crashes	Per 10k Population	Per 10k Licensed
0 - 15	1,923,244	49,678	90	0.5	18.1
16 - 20	672,666	471,135	8,785	130.6	186.5
21 - 24	570,792	470,489	7,854	137.6	166.9
25 - 64	5,149,843	4,748,323	52,624	102.2	110.8
65 +	1,611,755	1,437,067	7,881	48.9	54.8
Unknown	0	0	5,504	--	--
Total	9,928,300	7,176,692	82,738	83.3	115.3

2016 - Vehicles in Crashes

Vehicle Type	Motor Vehicles		Fatal Crashes		Injury Crashes	PDO Crashes
	Number of Vehicles	% of Total	Number	% of Total	Number	Number
Passenger car, SUV, van	71,078	85.9	92	71.3	14,646	56,340
Motor home	1,533	1.9	2	1.6	304	1,227
Pickup truck	6,616	8.0	8	6.2	1,224	5,384
Small truck under 10,000 lbs. GVWR	559	0.7	0	0.0	89	470
Motorcycle	314	0.4	16	12.4	224	74
Moped / goped	20	0.0	1	0.8	15	4
Go-cart / golf cart	5	0.0	0	0.0	1	4
Snowmobile	2	0.0	0	0.0	2	0
Off-Road Vehicle - ORV / All-Terrain Vehicle - ATV	5	0.0	0	0.0	4	1
Other	255	0.3	1	0.8	31	223
Truck/bus over 10,000 lbs.	1,457	1.8	6	4.7	237	1,214
Unknown	894	1.1	3	2.3	69	822
Total	82,738	100.0	129	100.0	16,846	65,763

Safety Network Oakland County/TIA Early Birds (continued)

5-Year Trend - Crashes by Month

Month	2012		2013		2014		2015		2016	
	Total Crashes	Fatal Crashes	Total Crashes	Fatal Crashes	Total Crashes	Fatal Crashes	Total Crashes	Fatal Crashes	Total Crashes	Fatal Crashes
January	3,356	5	3,351	5	4,982	1	3,968	5	3,592	3
February	2,662	5	3,072	4	3,391	3	3,489	1	3,447	2
March	2,437	5	2,622	5	3,106	3	2,849	7	3,300	3
April	2,430	6	2,483	2	2,330	5	2,584	5	3,106	8
May	2,964	4	3,090	1	3,115	4	3,234	3	3,399	6
June	3,023	4	3,042	6	3,138	12	3,212	9	3,626	5
July	2,841	5	2,848	8	2,790	6	3,097	6	3,161	9
August	2,734	7	2,932	5	3,020	4	3,109	5	3,545	9
September	2,644	2	2,978	4	3,351	6	3,312	9	3,661	9
October	3,348	1	3,506	5	3,721	5	3,576	5	3,848	10
November	3,008	7	3,463	7	3,940	6	3,857	5	3,661	5
December	3,639	3	3,896	2	3,067	7	3,556	4	4,314	9
Total	35,086	54	37,283	54	39,951	62	39,843	64	42,660	78

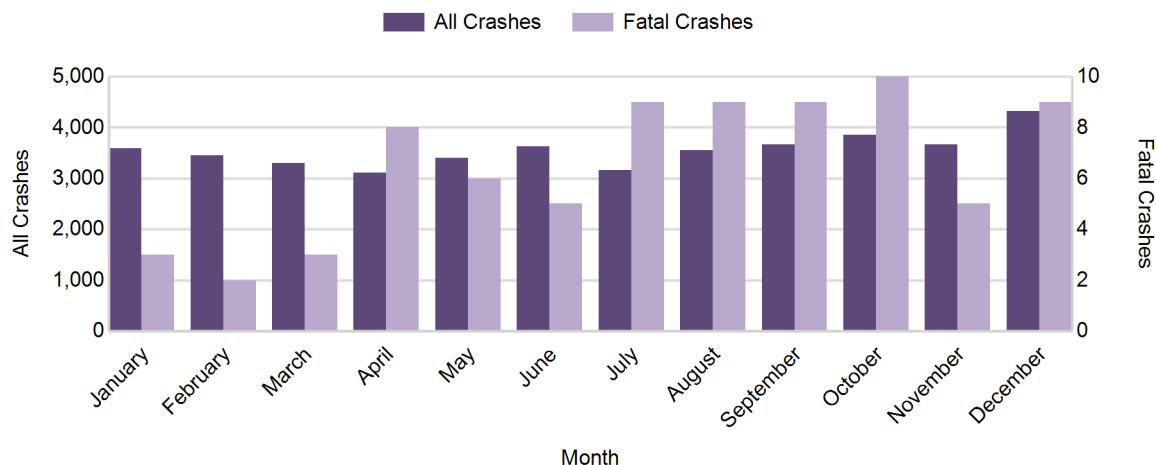
Note: † Indicates that the highest number of total crashes reported in the 5-year period occurred in the same month

5-Year Trend - Crashes by Day of Week

Day	2012		2013		2014		2015		2016	
	Total Crashes	Fatal Crashes	Total Crashes	Fatal Crashes	Total Crashes	Fatal Crashes	Total Crashes	Fatal Crashes	Total Crashes	Fatal Crashes
Monday	5,134	9	5,504	10	5,856	8	5,891	14	6,162	12
Tuesday	5,415	6	5,744	7	6,468	16	6,317	9	6,859	7
Wednesday	5,604	6	6,179	6	6,984	7	6,671	8	7,204	10
Thursday	5,590	6	6,157	8	6,611	7	6,318	7	7,169	9
Friday	6,098	5	6,269	12	6,537	8	6,696	12	7,195	12
Saturday	4,160	15	4,408	7	4,334	7	4,640	9	4,606	13
Sunday	3,085	7	3,022	4	3,161	9	3,310	5	3,465	15
Total	35,086	54	37,283	54	39,951	62	39,843	64	42,660	78

Note: † Indicates that the highest number of total crashes reported in the 5-year period occurred on the same day of the week

2016 Crashes by Month

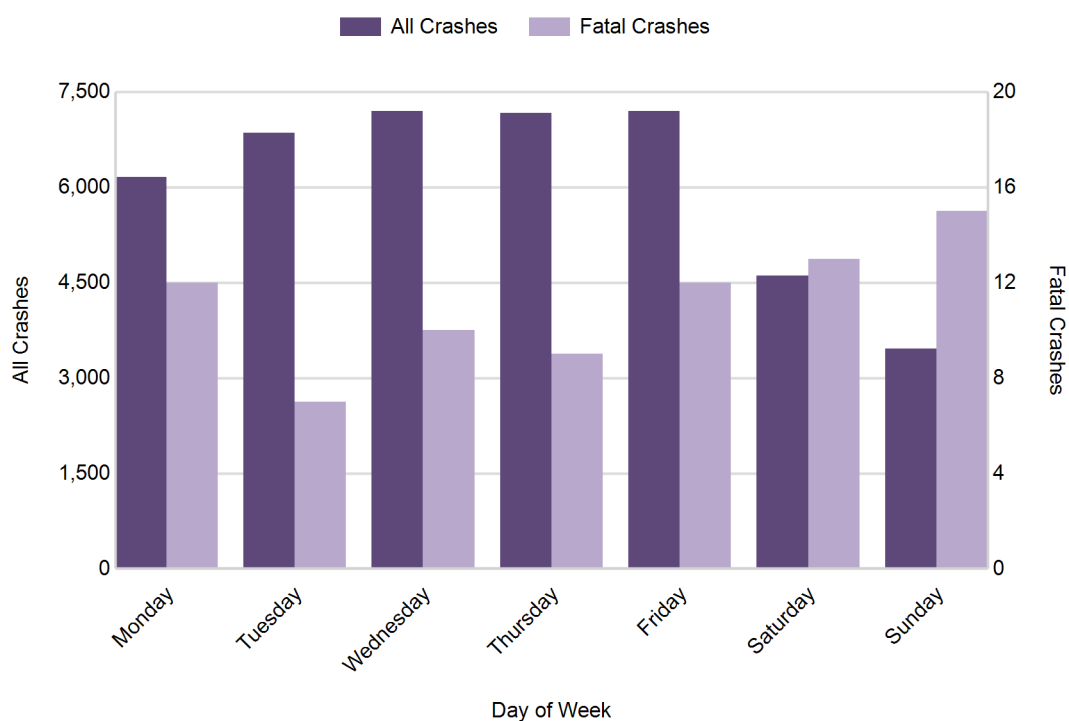


Traffic Safety Network Oakland County/TIA Early Birds (continued)

2016 - Crashes by Day of Week

Day	All Crashes		Fatal Crashes		Injury Crashes			PDO Crashes
	Number	% of Total	Number	% of Fatal	A	B	C	Number
Monday	6,162	14.4	12	15.4	51	333	799	4,967
Tuesday	6,859	16.1	7	9.0	57	340	848	5,607
Wednesday	7,204	16.9	10	12.8	49	359	932	5,854
Thursday	7,169	16.8	9	11.5	48	379	942	5,791
Friday	7,195	16.9	12	15.4	48	380	961	5,794
Saturday	4,606	10.8	13	16.7	59	295	649	3,590
Sunday	3,465	8.1	15	19.2	30	237	422	2,761
Total	42,660	100.0	78	100.0	342	2,323	5,553	34,364

2016 Day of Week and Severity

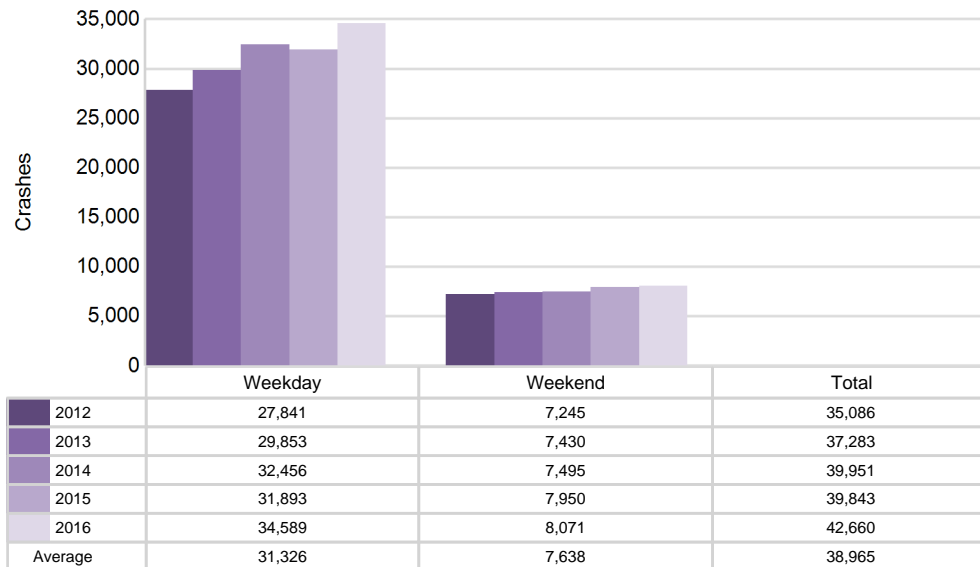


Safety Network Oakland County/TIA Early Birds (continued)

5-Year Trend - Crashes by Weekday and Weekend

Portion of Week	2012		2013		2014		2015		2016	
	Total Crashes	Fatal Crashes	Total Crashes	Fatal Crashes	Total Crashes	Fatal Crashes	Total Crashes	Fatal Crashes	Total Crashes	Fatal Crashes
Weekday	27,841	32	29,853	43	32,456	46	31,893	50	34,589	50
Weekend	7,245	22	7,430	11	7,495	16	7,950	14	8,071	28
Total	35,086	54	37,283	54	39,951	62	39,843	64	42,660	78

5-Year Crash Trends by Weekday (Monday - Friday) and Weekend (Saturday & Sunday)

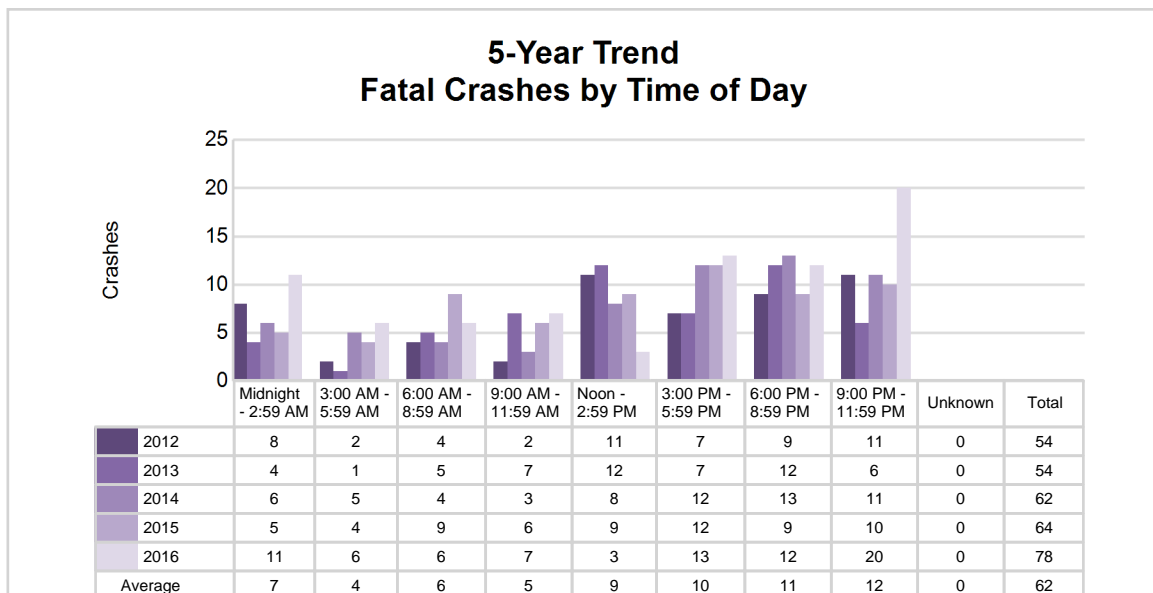
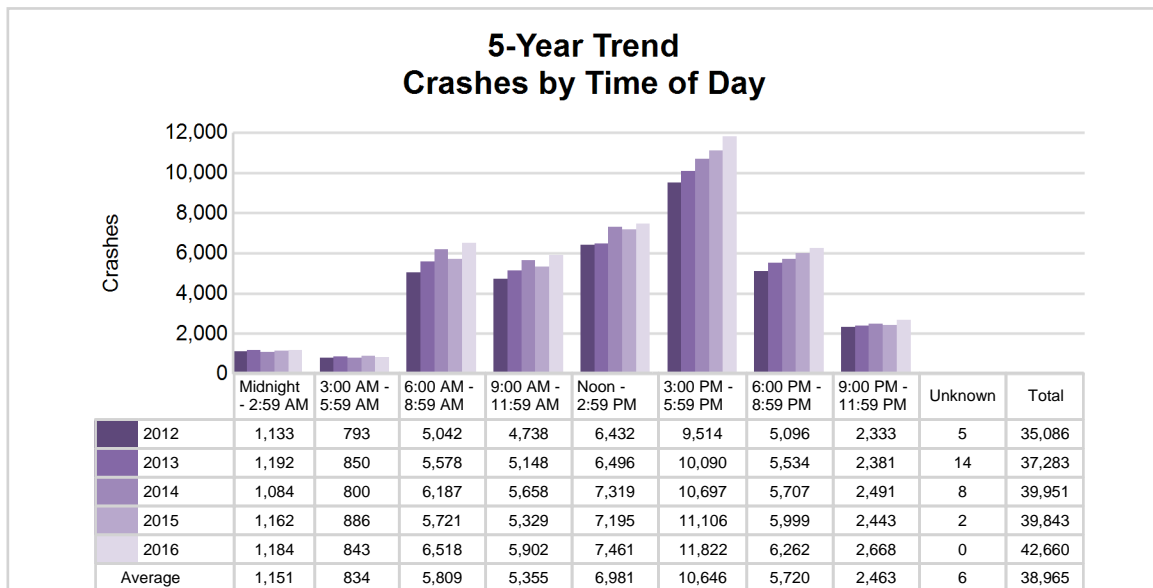


Traffic Safety Network Oakland County/TIA Early Birds (continued)

5-Year Trend - Crashes by Time of Day

Time of Day	2012		2013		2014		2015		2016	
	Total Crashes	Fatal Crashes	Total Crashes	Fatal Crashes	Total Crashes	Fatal Crashes	Total Crashes	Fatal Crashes	Total Crashes	Fatal Crashes
Midnight - 2:59 AM	1,133	8	1,192	4	1,084	6	1,162	5	1,184	11
3:00 AM - 5:59 AM	793	2	850	1	800	5	886	4	843	6
6:00 AM - 8:59 AM	5,042	4	5,578	5	6,187	4	5,721	9	6,518	6
9:00 AM - 11:59 AM	4,738	2	5,148	7	5,658	3	5,329	6	5,902	7
Noon - 2:59 PM	6,432	11	6,496	12	7,319	8	7,195	9	7,461	3
3:00 PM - 5:59 PM	9,514 †	7	10,090 †	7	10,697 †	12	11,106 †	12	11,822 †	13
6:00 PM - 8:59 PM	5,096	9	5,534	12	5,707	13	5,999	9	6,262	12
9:00 PM - 11:59 PM	2,333	11	2,381	6	2,491	11	2,443	10	2,668	20
Unknown	5	0	14	0	8	0	2	0	0	0
Total	35,086	54	37,283	54	39,951	62	39,843	64	42,660	78

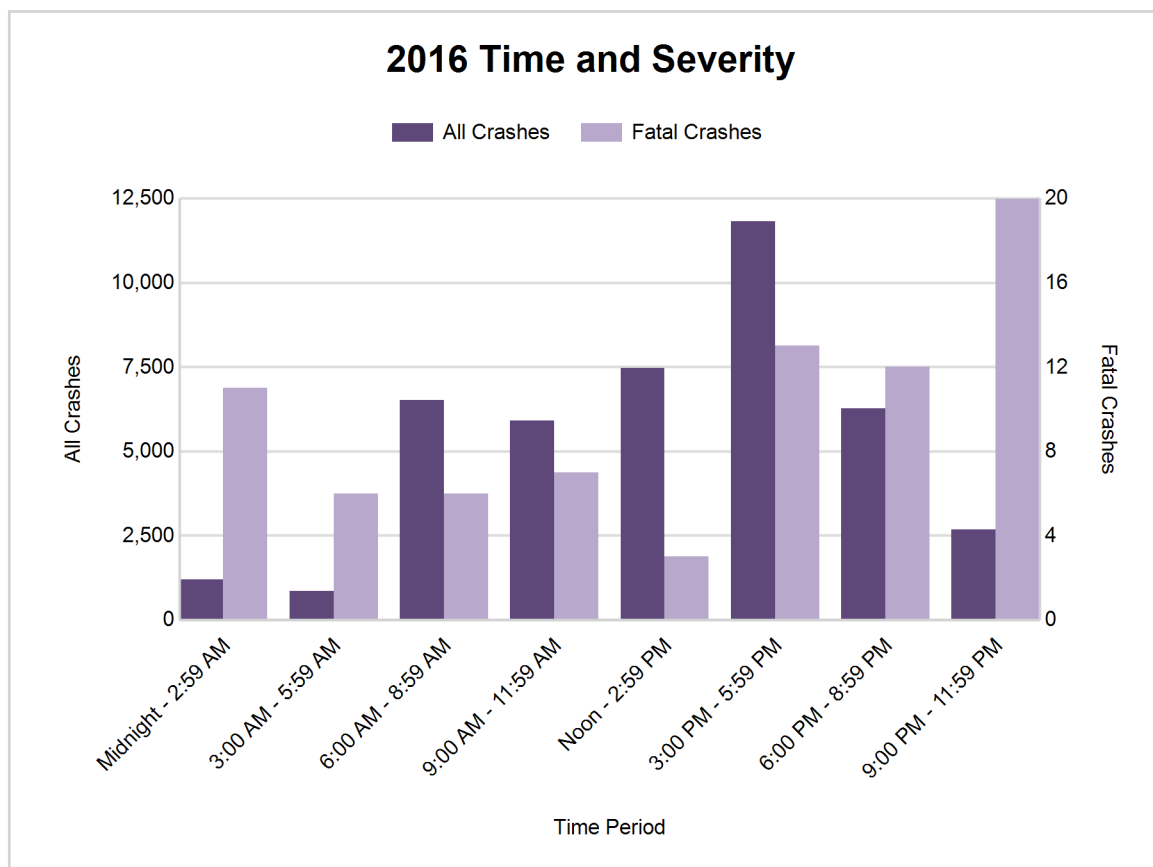
Note: † Indicates that the highest number of total crashes reported in the 5-year period occurred in the same time period



Safety Network Oakland County/TIA Early Birds (continued)

2016 - Time and Severity

Time of Day		All Crashes		Fatal Crashes		Injury Crashes			PDO Crashes
		Number	% of Total	Number	% of Fatal	A	B	C	Number
Midnight	- 2:59 AM	1,184	2.8	11	14.1	24	110	137	902
3:00 AM	- 5:59 AM	843	2.0	6	7.7	7	69	90	671
6:00 AM	- 8:59 AM	6,518	15.3	6	7.7	50	323	847	5,292
9:00 AM	- 11:59 AM	5,902	13.8	7	9.0	38	305	783	4,769
Noon	- 2:59 PM	7,461	17.5	3	3.8	48	425	964	6,021
3:00 PM	- 5:59 PM	11,822	27.7	13	16.7	76	598	1,625	9,510
6:00 PM	- 8:59 PM	6,262	14.7	12	15.4	55	309	771	5,115
9:00 PM	- 11:59 PM	2,668	6.3	20	25.6	44	184	336	2,084
Unknown		0	0.0	0	0.0	0	0	0	0
Total		42,660	100.0	78	100.0	342	2,323	5,553	34,364

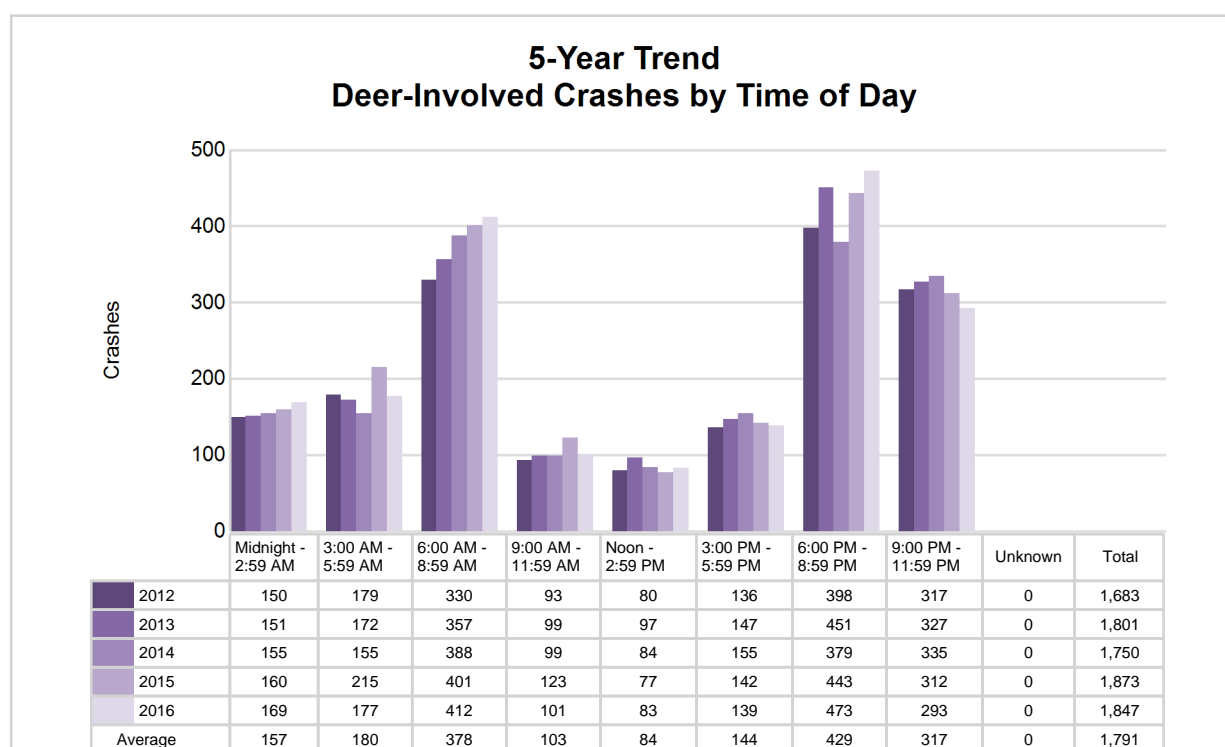


Traffic Safety Network Oakland County/TIA Early Birds (continued)

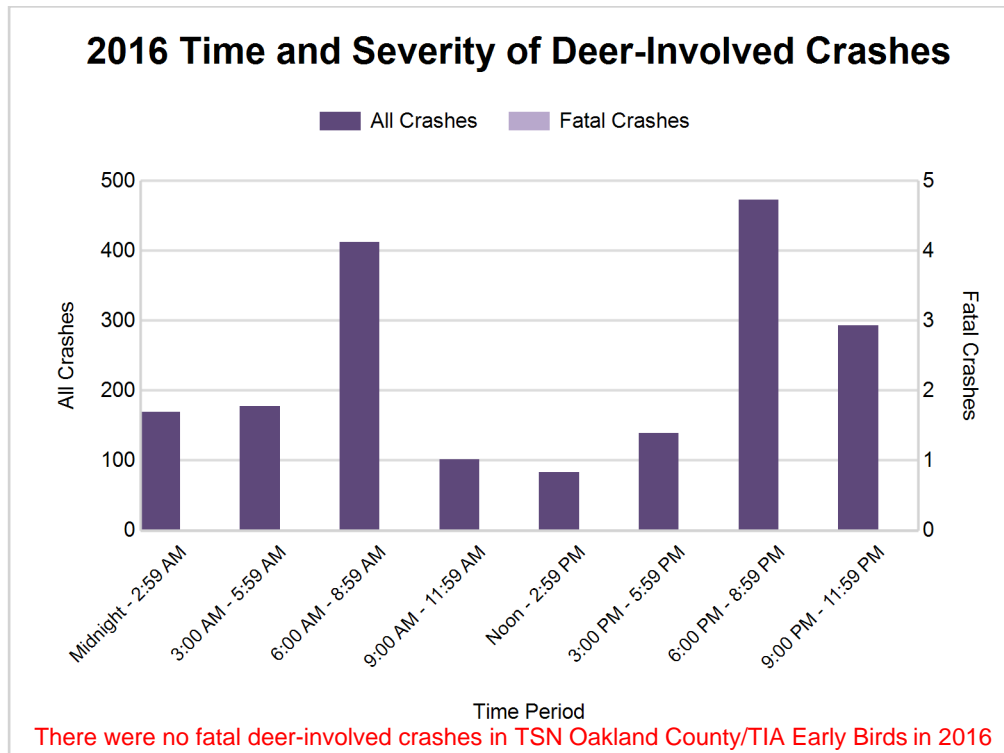
5-Year Trend - Deer-Involved Crashes by Time of Day

Time of Day	2012		2013		2014		2015		2016	
	Total Crashes	Fatal Crashes	Total Crashes	Fatal Crashes	Total Crashes	Fatal Crashes	Total Crashes	Fatal Crashes	Total Crashes	Fatal Crashes
Midnight - 2:59 AM	150	0	151	0	155	0	160	0	169	0
3:00 AM - 5:59 AM	179	0	172	0	155	0	215	0	177	0
6:00 AM - 8:59 AM	330	0	357	0	388	0	401	0	412	0
9:00 AM - 11:59 AM	93	0	99	0	99	0	123	0	101	0
Noon - 2:59 PM	80	0	97	0	84	0	77	0	83	0
3:00 PM - 5:59 PM	136	0	147	0	155	0	142	0	139	0
6:00 PM - 8:59 PM	398	0	451	0	379	0	443	0	473	0
9:00 PM - 11:59 PM	317	0	327	0	335	0	312	0	293	0
Unknown	0	0	0	0	0	0	0	0	0	0
Total	1,683	0	1,801	0	1,750	0	1,873	0	1,847	0

Note: † Indicates that the highest number of total crashes reported in the 5-year period occurred in the same time period



Safety Network Oakland County/TIA Early Birds (continued)



2016 - Reported Motor Vehicle Crashes by County

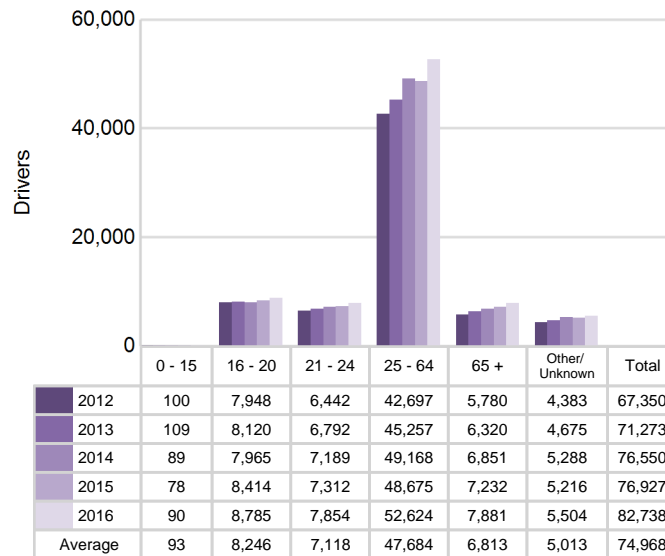
County	Crashes											Persons	
	Total	Fatal	Injury	Property Damage	Inter-state	US Route	State Route	Local Street	Alcohol-Involved	Drug-Involved	Deer-Involved	Fatalities	Injuries
Oakland	42,660	78	8,218	34,364	7,276	2,370	7,254	25,699	1,088	292	1,847	80	11,170
Total	42,660	78	8,218	34,364	7,276	2,370	7,254	25,699	1,088	292	1,847	80	11,170

Traffic Safety Network Oakland County/TIA Early Birds (continued)

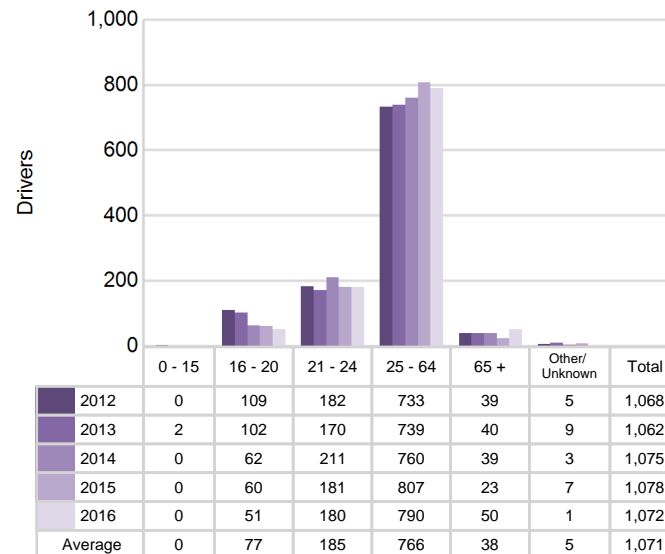
5-Year Trend - Drivers in Crashes Coded Drinking by Driver Age

Driver Age	2012		2013		2014		2015		2016	
	Total Drivers in Crashes	Total Drivers Coded Drinking	Total Drivers in Crashes	Total Drivers Coded Drinking	Total Drivers in Crashes	Total Drivers Coded Drinking	Total Drivers in Crashes	Total Drivers Coded Drinking	Total Drivers in Crashes	Total Drivers Coded Drinking
0 - 15	100	0	109	2	89	0	78	0	90	0
16 - 20	7,948	109	8,120	102	7,965	62	8,414	60	8,785	51
21 - 24	6,442	182	6,792	170	7,189	211	7,312	181	7,854	180
25 - 64	42,697	733	45,257	739	49,168	760	48,675	807	52,624	790
65 +	5,780	39	6,320	40	6,851	39	7,232	23	7,881	50
Unknown	4,383	5	4,675	9	5,288	3	5,216	7	5,504	1
Total	67,350	1,068	71,273	1,062	76,550	1,075	76,927	1,078	82,738	1,072

**5-Year Trend
Total Drivers in Crashes by Age**



**5-Year Trend
Total Drivers Coded Drinking by Age**



Safety Network Oakland County/TIA Early Birds (continued)

2016 - Bodily Alcohol Concentration (BAC) Results Among All Vehicle Drivers in Alcohol-Involved Crashes by Age

Age Group	Drivers				BAC Result Range for Drivers Coded Drinking				
	Total Drivers in Alcohol-Involved Crashes	Total Drivers Tested in all Crashes	Total Drivers Coded Drinking, Tested	Total Drivers Coded Drinking	BAC = 0.00	BAC 0.01 g/dL to 0.07 g/dL	BAC 0.08 g/dL to 0.16 g/dL	BAC 0.17 g/dL and Above	BAC Not Reported
0 - 15	4	0	0	0	0	0	0	0	0
16 - 20	102	57	45	51	2	5	12	13	19
21 - 24	235	189	163	180	3	19	62	46	50
25 - 64	1,178	788	675	790	22	60	172	249	287
65 +	91	60	43	50	1	12	11	12	14
Unknown	139	2	0	1	0	0	0	0	1
Total	1,749	1,096	926	1,072	28	96	257	320	371

Notes: BAC measured in grams (g) per deciliter (dL).

BAC may not be reported if drivers are not tested or if the results are not available immediately (as in the case of a blood test).

A driver may be coded by the officer as drinking even though no test is administered.

Alcohol-Involved Crashes

In 2016, there were 1,749 drivers in alcohol-involved crashes; 1,072 (61.3%) of those drivers were coded as had-been-drinking by the officer on the crash form.

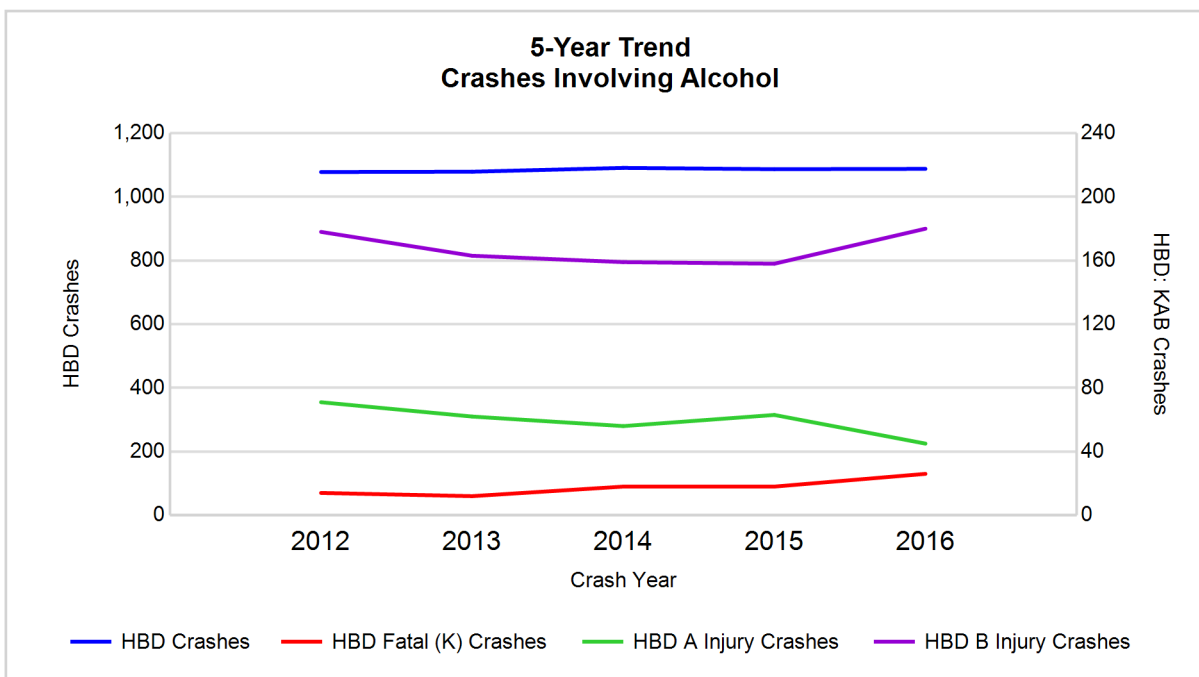
- 577 (53.8%) of the 1,072 drivers had a blood alcohol concentration (BAC) of 0.08 g/dL (grams per deciliter) or greater, and 320 (55.5%) of the 577 drivers had a BAC at or above 0.17 g/dL.
- 926 (86.4%) of the 1,072 drivers were coded as had-been-drinking and were tested for alcohol consumption.

5-Year Trend - Crashes Involving Alcohol

Year	All Crashes	HBD Crashes	% HBD	Fatal Crashes	HBD Fatal Crashes	% HBD	A Injury Crashes	HBD A Injury Crashes	% HBD	B Injury Crashes	HBD B Injury Crashes	% HBD
2012	35,086	1,078	3.1	54	14	25.9	445	71	16.0	1,878	178	9.5
2013	37,283	1,079	2.9	54	12	22.2	434	62	14.3	1,863	163	8.7
2014	39,951	1,091	2.7	62	18	29.0	428	56	13.1	1,925	159	8.3
2015	39,843	1,087	2.7	64	18	28.1	353	63	17.8	1,990	158	7.9
2016	42,660**	1,088	2.6*	78**	26**	33.3**	342*	45*	13.2	2,323**	180**	7.7*

Note: * Indicates that the most recent year is the lowest number or percentage reported in the 5-year period in that column

** Indicates that the most recent year is the highest number or percentage reported in the 5-year period in that column



Note: Had-Been-Drinking (HBD)

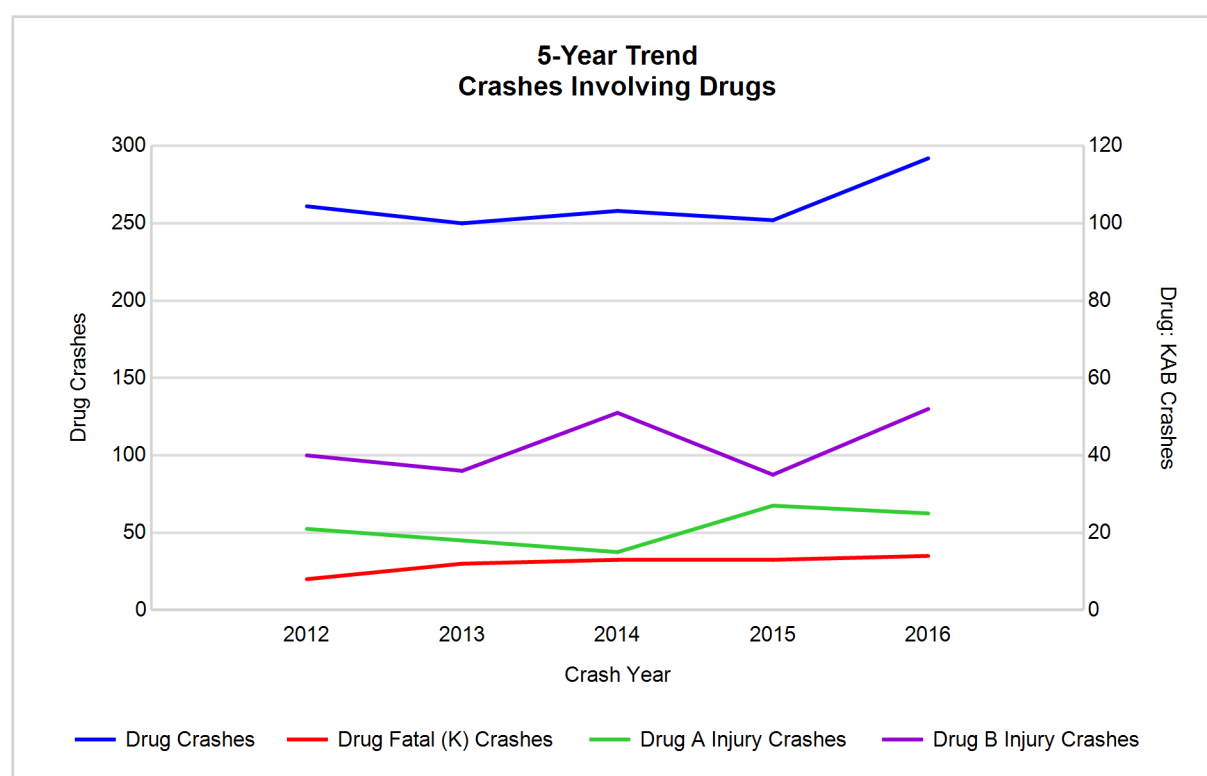
Traffic Safety Network Oakland County/TIA Early Birds (continued)

5-Year Trend - Crashes Involving Drugs

Year	All Crashes	Drug Crashes	% Drug	Fatal Crashes	Drug Fatal Crashes	% Drug	A Injury Crashes	Drug A Injury Crashes	% Drug	B Injury Crashes	Drug B Injury Crashes	% Drug
2012	35,086	261	0.7	54	8	14.8	445	21	4.7	1,878	40	2.1
2013	37,283	250	0.7	54	12	22.2	434	18	4.1	1,863	36	1.9
2014	39,951	258	0.6	62	13	21.0	428	15	3.5	1,925	51	2.6
2015	39,843	252	0.6	64	13	20.3	353	27	7.6	1,990	35	1.8
2016	42,660**	292**	0.7	78**	14**	17.9	342*	25	7.3	2,323**	52**	2.2

Note: * Indicates that the most recent year is the lowest number or percentage reported in the 5-year period in that column

** Indicates that the most recent year is the highest number or percentage reported in the 5-year period in that column



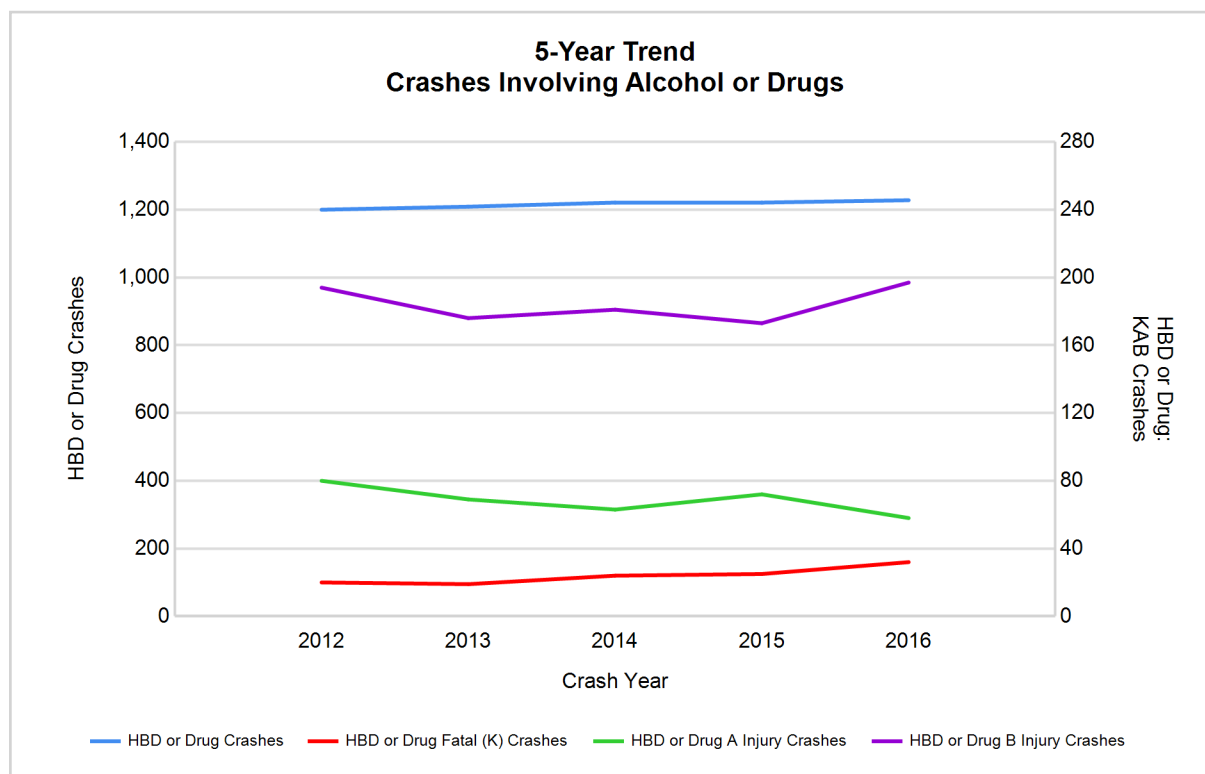
Safety Network Oakland County/TIA Early Birds (continued)

5-Year Trend - Crashes Involving Alcohol or Drugs

Year	All Crashes	HBD or Drug Crashes	% HBD or Drug	Fatal Crashes	HBD or Drug Fatal Crashes	% HBD or Drug	A Injury Crashes	HBD or Drug A Injury Crashes	% HBD or Drug	B Injury Crashes	HBD or Drug B Injury Crashes	% HBD or Drug
2012	35,086	1,200	3.4	54	20	37.0	445	80	18.0	1,878	194	10.3
2013	37,283	1,209	3.2	54	19	35.2	434	69	15.9	1,863	176	9.4
2014	39,951	1,221	3.1	62	24	38.7	428	63	14.7	1,925	181	9.4
2015	39,843	1,221	3.1	64	25	39.1	353	72	20.4	1,990	173	8.7
2016	42,660**	1,228**	2.9*	78**	32**	41.0**	342*	58*	17.0	2,323**	197**	8.5*

Note: * Indicates that the most recent year is the lowest number or percentage reported in the 5-year period in that column

** Indicates that the most recent year is the highest number or percentage reported in the 5-year period in that column



Note: Had-Been-Drinking (HBD)

Traffic Safety Network Oakland County/TIA Early Birds (continued)

13

2016 - Restraints Worn Among Vehicle Drivers and Injured Passengers by Vehicle Type

Vehicle Type	Total Occupants			Fatalities			A - Suspected Serious			B - Suspected Minor			C - Possible Injury			No Injury		
	Total	Used Restraint	%	Total	Used Restraint	%	Total	Used Restraint	%	Total	Used Restraint	%	Total	Used Restraint	%	Total	Used Restraint	%
Passenger car, SUV, van	73,061	67,710	92.7	38	22	57.9	287	251	87.5	2,304	2,165	94.0	7,047	6,829	96.9	59,437	58,438	98.3
Motor home	1,600	1,477	92.3	0	0	0.0	4	3	75.0	46	43	93.5	162	148	91.4	1,307	1,282	98.1
Pickup truck	6,722	6,084	90.5	2	0	0.0	18	12	66.7	167	145	86.8	405	394	97.3	5,644	5,533	98.0
Small truck under 10,000 lbs. GVWR	567	488	86.1	0	0	0.0	2	0	0.0	7	5	71.4	25	24	96.0	473	459	97.0
Motorcycle	332	244	73.5	15	10	66.7	54	36	66.7	117	93	79.5	63	46	73.0	76	59	77.6
Moped / goped	20	10	50.0	1	0	0.0	0	0	0.0	10	4	40.0	5	3	60.0	3	3	100.0
Go-cart / golf cart	6	1	16.7	0	0	0.0	0	0	0.0	0	0	0.0	1	0	0.0	4	1	25.0
Snowmobile	2	1	50.0	0	0	0.0	2	1	50.0	0	0	0.0	0	0	0.0	0	0	0.0
Off-Road Vehicle - ORV / All-Terrain Vehicle - ATV	5	1	20.0	0	0	0.0	2	0	0.0	2	1	50.0	0	0	0.0	1	0	0.0
Other	257	177	68.9	0	0	0.0	1	1	100.0	5	5	100.0	12	10	83.3	180	161	89.4
Truck/bus over 10,000 lbs.	1,492	1,325	88.8	1	1	100.0	1	1	100.0	13	10	76.9	64	33	51.6	1,318	1,279	97.0
Unknown	896	7	0.8	0	0	0.0	0	0	0.0	1	0	0.0	1	1	100.0	22	5	22.7
Total	84,960	77,525	91.2	57	33	57.9	371	305	82.2	2,672	2,471	92.5	7,785	7,488	96.2	68,465	67,220	98.2

Note: Restraint Use includes shoulder belt only used, lap belt only used, both lap and shoulder belts used, child restraint used, restraint failure, and helmet worn.

2016 - Restraints Worn Among Vehicle Drivers and Injured Passengers by Age

Age Group	Total Occupants			Fatalities			A - Suspected Serious			B - Suspected Minor			C - Possible Injury			No Injury		
	Total	Used Restraint	%	Total	Used Restraint	%	Total	Used Restraint	%	Total	Used Restraint	%	Total	Used Restraint	%	Total	Used Restraint	%
0 - 15	703	617	87.8	1	0	0.0	14	10	71.4	103	85	82.5	501	445	88.8	83	77	92.8
16 - 20	9,098	8,871	97.5	3	1	33.3	31	26	83.9	333	301	90.4	759	716	94.3	7,956	7,826	98.4
21 - 24	8,019	7,789	97.1	9	4	44.4	38	29	76.3	311	284	91.3	687	653	95.1	6,959	6,819	98.0
25 - 64	53,490	52,223	97.6	30	18	60.0	241	195	80.9	1,571	1,459	92.9	4,931	4,791	97.2	46,572	45,759	98.3
65 +	8,141	8,007	98.4	14	10	71.4	47	45	95.7	354	342	96.6	901	882	97.9	6,812	6,728	98.8
Unknown	5,509	18	0.3	0	0	0.0	0	0	0.0	0	0	0.0	6	1	16.7	83	11	13.3
Total	84,960	77,525	91.2	57	33	57.9	371	305	82.2	2,672	2,471	92.5	7,785	7,488	96.2	68,465	67,220	98.2

Note: Restraint Use includes shoulder belt only used, lap belt only used, both lap and shoulder belts used, child restraint used, restraint failure, and helmet worn.

Safety Network Oakland County/TIA Early Birds (continued)

5-Year Trend - Restraint Use Among Drivers

Restraint Use	2012			2013			2014			2015			2016		
	Drivers	Fatal Drivers	Injured Drivers	Drivers	Fatal Drivers	Injured Drivers	Drivers	Fatal Drivers	Injured Drivers	Drivers	Fatal Drivers	Injured Drivers	Drivers	Fatal Drivers	Injured Drivers
No belts available	72	0	13	33	1	10	35	0	5	26	0	4	31	0	6
Shoulder belt only used	10	0	5	29	0	3	4	0	0	4	0	1	59	0	7
Lap belt only used	29	0	4	42	0	5	31	0	4	27	0	5	29	0	4
Both lap & shoulder belts used	61,276	21	6,728	65,042	18	7,082	69,634	16	7,281	69,940	18	7,525	75,247	15	8,147
No belts used	301	8	145	249	10	124	259	11	119	259	13	118	246	11	114
Child restraint used	0	0	0	0	0	0	1	0	0	0	0	0	0	0	0
Child restraint not used, unavailable or improper use	0	0	0	0	0	0	0	0	0	0	0	0	0	0	0
Restraint failure	2	0	0	4	0	3	2	0	1	1	0	0	3	0	0
Restraint use unknown	4,965	2	125	5,178	3	117	5,821	1	101	5,906	3	132	5,924	2	113
Helmet worn	245	4	184	218	4	157	197	5	142	204	4	151	240	10	168
Helmet not worn	74	2	58	57	3	45	70	3	50	71	2	54	83	4	62
Helmet use unknown	16	1	10	7	0	4	7	0	5	14	0	8	13	2	7
Uncoded & errors	360	0	0	414	0	0	489	0	1	475	0	0	863	0	0
Total	67,350	38	7,272	71,273	39	7,550	76,550	36	7,709	76,927	40	7,998	82,738	44	8,628

5-Year Trend - Restraint Use Among Drivers Coded Drinking

Restraint Use	2012			2013			2014			2015			2016		
	Drivers	Fatal Drivers	Injured Drivers	Drivers	Fatal Drivers	Injured Drivers	Drivers	Fatal Drivers	Injured Drivers	Drivers	Fatal Drivers	Injured Drivers	Drivers	Fatal Drivers	Injured Drivers
No belts available	1	0	0	7	0	6	0	0	0	1	0	0	0	0	0
Shoulder belt only used	0	0	0	1	0	0	0	0	0	1	0	1	3	0	1
Lap belt only used	0	0	0	0	0	0	0	0	0	0	0	0	1	0	1
Both lap & shoulder belts used	843	5	222	864	4	212	877	1	201	879	2	195	866	2	220
No belts used	72	4	46	50	1	30	56	4	40	56	5	34	57	5	37
Child restraint used	0	0	0	0	0	0	0	0	0	0	0	0	0	0	0
Child restraint not used, unavailable or improper use	0	0	0	0	0	0	0	0	0	0	0	0	0	0	0
Restraint failure	0	0	0	1	0	1	0	0	0	0	0	0	0	0	0
Restraint use unknown	133	0	47	124	0	42	125	0	28	123	2	34	128	1	29
Helmet worn	10	1	8	7	0	6	10	2	7	9	1	5	7	2	5
Helmet not worn	6	0	6	7	0	6	6	1	4	7	1	4	9	2	7
Helmet use unknown	3	0	3	1	0	1	1	0	1	1	0	0	1	1	0
Uncoded & errors	0	0	0	0	0	0	0	0	0	1	0	0	0	0	0
Total	1,068	10	332	1,062	5	304	1,075	8	281	1,078	11	273	1,072	13	300

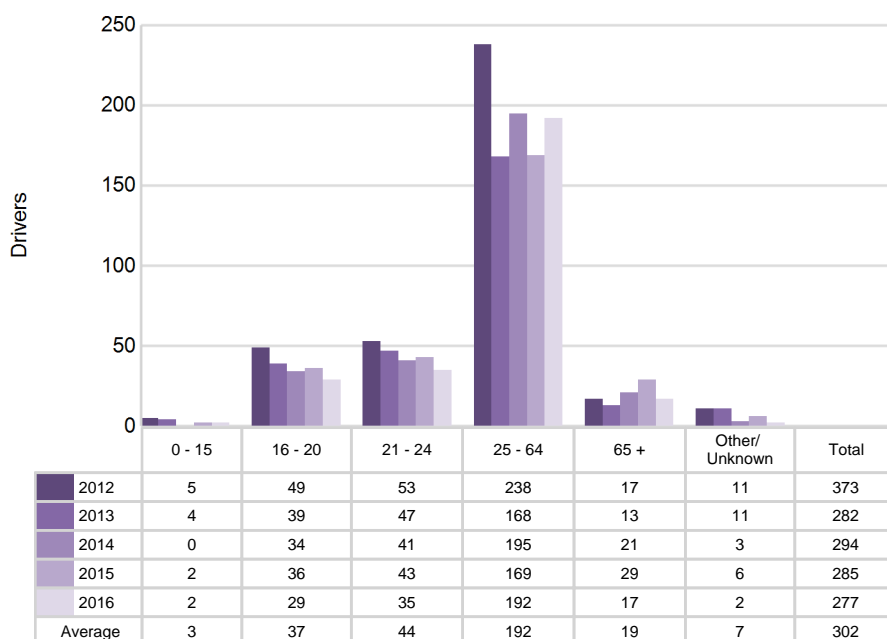
Traffic Safety Network Oakland County/TIA Early Birds (continued)

5-Year Trend - Seatbelt Not Used Among Drivers by Age

Age Group	2012			2013			2014			2015			2016		
	Drivers	Fatal Drivers	Injured Drivers	Drivers	Fatal Drivers	Injured Drivers	Drivers	Fatal Drivers	Injured Drivers	Drivers	Fatal Drivers	Injured Drivers	Drivers	Fatal Drivers	Injured Drivers
0 - 15	5	0	2	4	0	0	0	0	0	2	0	0	2	0	1
16 - 20	49	0	21	39	2	23	34	0	20	36	1	16	29	0	15
21 - 24	53	0	34	47	1	31	41	1	18	43	3	23	35	4	21
25 - 64	238	6	93	168	7	72	195	8	77	169	8	69	192	5	78
65 +	17	2	7	13	1	7	21	2	9	29	1	14	17	2	5
Unknown	11	0	1	11	0	1	3	0	0	6	0	0	2	0	0
Total	373	8	158	282	11	134	294	11	124	285	13	122	277	11	120

Note: Seatbelt Not Used includes no belts available or no belts used.

5-Year Trend Driver Seatbelt Not Used



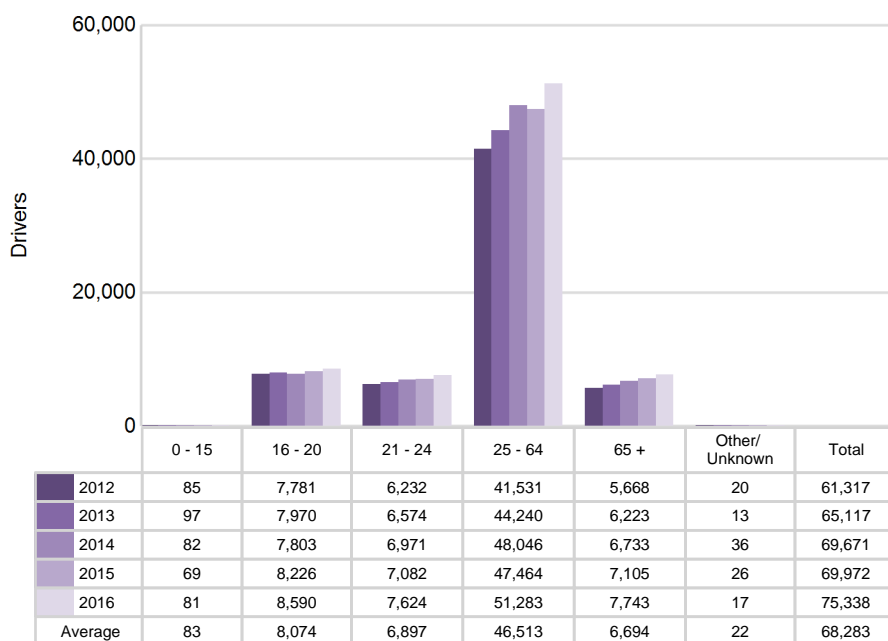
Safety Network Oakland County/TIA Early Birds (continued)

5-Year Trend - Seatbelt Used Among Drivers by Age

Age Group	2012			2013			2014			2015			2016		
	Drivers	Fatal Drivers	Injured Drivers	Drivers	Fatal Drivers	Injured Drivers	Drivers	Fatal Drivers	Injured Drivers	Drivers	Fatal Drivers	Injured Drivers	Drivers	Fatal Drivers	Injured Drivers
0 - 15	85	0	9	97	0	5	82	0	5	69	0	7	81	0	4
16 - 20	7,781	3	746	7,970	0	731	7,803	0	694	8,226	1	741	8,590	0	765
21 - 24	6,232	3	660	6,574	0	676	6,971	2	691	7,082	1	705	7,624	2	809
25 - 64	41,531	12	4,585	44,240	14	4,820	48,046	7	5,089	47,464	9	5,146	51,283	9	5,564
65 +	5,668	3	737	6,223	4	861	6,733	7	806	7,105	7	932	7,743	4	1,016
Unknown	20	0	0	13	0	0	36	0	1	26	0	0	17	0	0
Total	61,317	21	6,737	65,117	18	7,093	69,671	16	7,286	69,972	18	7,531	75,338	15	8,158

Note: Seatbelt Used includes shoulder belt only used, lap belt only used, both lap and shoulder belts used, and restraint failure.

5-Year Trend Driver Seatbelt Used

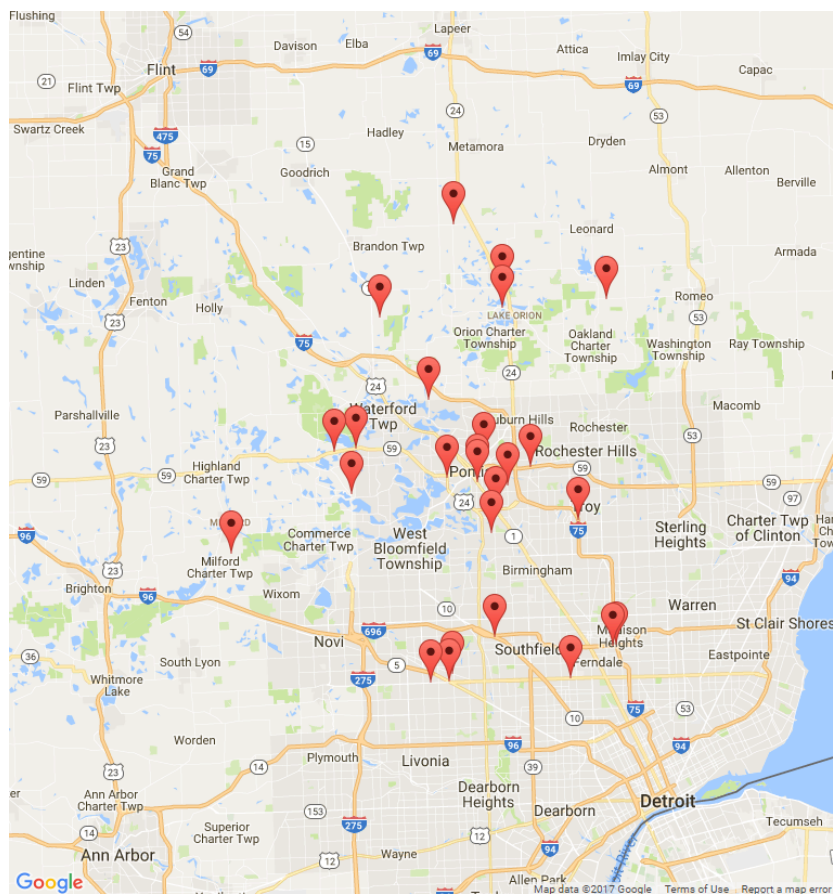


Traffic Safety Network Oakland County/TIA Early Birds (continued)

5-Year Trend - Drivers in Crashes by Hazardous Action

Hazardous Action	2012		2013		2014		2015		2016	
	Total Drivers in Crashes	Drivers in Fatal Crashes	Total Drivers in Crashes	Drivers in Fatal Crashes	Total Drivers in Crashes	Drivers in Fatal Crashes	Total Drivers in Crashes	Drivers in Fatal Crashes	Total Drivers in Crashes	Drivers in Fatal Crashes
None	32,425	38	34,373	47	36,689	41	37,373	59	40,123	53
Speed too fast	2,316	7	2,709	7	3,252	8	2,438	4	2,688	9
Speed too slow	10	0	15	0	13	0	13	0	10	0
Failed to yield	6,309	5	6,582	9	6,757	3	6,950	7	7,285	6
Disregard traffic control	1,067	4	1,032	1	1,090	3	1,148	8	1,306	6
Drove wrong way	33	0	25	0	29	1	39	0	32	1
Drove left of center	335	6	322	3	388	6	335	4	359	4
Improper passing	185	0	219	0	300	1	284	1	306	0
Improper lane use	1,494	1	1,800	0	1,867	0	2,077	0	2,383	0
Improper turn	447	0	478	0	549	1	623	0	751	1
Improper/no signal	59	0	76	0	64	0	56	0	45	0
Improper backing	817	0	836	0	963	1	915	0	998	0
Unable to stop in assured clear distance	13,432	5	14,187	4	15,134	4	15,623	4	16,973	6
Other	2,349	5	2,216	6	2,527	6	2,340	11	2,463	10
Unknown	3,300	11	3,491	9	3,771	9	3,712	3	3,904	24
Reckless driving	208	1	223	6	224	4	236	5	243	4
Careless/negligent driving	1,111	1	1,203	4	1,220	6	1,379	7	1,456	4
Uncoded & errors	1,453	2	1,486	2	1,713	5	1,386	1	1,413	1
Total	67,350	86	71,273	98	76,550	99	76,927	114	82,738	129

Safety Network Oakland County/TIA Early Birds (continued)



The picture above represents all 2016 alcohol-involved fatal crashes in TSN Oakland County/TIA Early Birds.

In 2016, there were 1,088 alcohol-involved crashes in TSN Oakland County/TIA Early Birds:

- 26 K - Fatal Crashes
- 45 A - Suspected Serious Injury Crashes
- 180 B - Suspected Minor Injury Crashes
- 182 C - Possible Injury Crashes
- 655 O - Property Damage Only/No Injury Crashes

Office of Highway Safety Planning

Physical Address:
7150 Harris Drive
Dimondale, Michigan 48821

Mailing Address:
P.O. Box 30634
Lansing, Michigan 48909

Phone: (517) 284-3112
Fax: (517) 284-3151

Find us on the web:
MichiganTrafficCrashFacts.org

