



2016

**MTCF**  
Michigan Traffic  
Crash Facts

# Michigan Traffic Crash Facts

## Reporting Criteria

Please pay particular attention to the wording when interpreting the three levels of data gathered for this report.

### Crash

The Crash Level analyzes data related to crash events and returns one result per crash.

Examples: Time, weather, and location.

### Units

The Units Level analyzes the experience of the units in the crash and returns one result per vehicle, driver, pedestrian, bicyclist, or train.

Examples: Vehicle type, driver condition, and unit events.

### People

The People Level analyzes the experience of the people involved in the crash and returns one result per occupant/person/party.

Examples: Age, injury severity, and seat belt or helmet use.

### **KABCO Injury Indicator:**

K = Killed

A = Suspected Serious Injury

B = Suspected Minor Injury

C = Possible Injury

O = No Injury

Property Damage Only (PDO)



## Traffic Safety Network Huron Valley

### 2016 Traffic Crash Data & 2012-2016 5-Year Trends

Traffic Safety Network Huron Valley is comprised of Livingston, Monroe, and Washtenaw counties. Trend tables for this report are based on those counties.



### Sources:

The crashes in this report occurred on public roadways in Michigan and resulted in injuries, fatalities, or property damage (with \$1,000 as a reporting threshold). The information was gathered from Michigan Traffic Crash Report Forms (UD-10) submitted by local police departments, sheriff's offices, and the Michigan State Police. Other related information was obtained from the departments of Transportation, State, and Community Health.

This page left intentionally blank

## TSN Huron Valley Experience

In 2016:

There were 35,944 drivers involved in 20,389 motor vehicle crashes in Traffic Safety Network Huron Valley. Of those crashes, 59 were classified as fatal, resulting in 65 fatalities. An additional 4,767 persons were injured.

Traffic Safety Network Huron Valley experienced the highest number of motor vehicle crashes (2,092) in December, the highest number of fatal crashes (9) and the highest number of persons killed (10) in July.

Michigan driver statistics indicate 6.6 percent of licensed drivers in Traffic Safety Network Huron Valley were age 16-20, and 12.6 percent of drivers in crashes were also in that age group.

## 2016 - Crashes and Injuries by Month

Month	Crashes				Persons	
	Total	Fatal	Injury	Property Damage Only (PDO)	Fatalities	Injuries
January	1,773	3	255	1,515	3	327
February	1,714	5	264	1,445	6	340
March	1,664	2	284	1,378	2	367
April	1,521	3	264	1,254	3	355
May	1,566	3	326	1,237	3	430
June	1,612	5	311	1,296	6	425
July	1,553	9	326	1,218	10	432
August	1,520	7	313	1,200	8	422
September	1,659	8	357	1,294	8	506
October	1,792	7	298	1,487	7	417
November	1,923	4	282	1,637	4	385
December	2,092	3	282	1,807	5	361
<b>Total</b>	<b>20,389</b>	<b>59</b>	<b>3,562</b>	<b>16,768</b>	<b>65</b>	<b>4,767</b>

## 2016 - Driver Statistics

Age Group	Statewide			Driver Rates	
	2016 Population	Licensed Drivers	Drivers in Crashes	Per 10k Population	Per 10k Licensed
0 - 15	1,923,244	49,678	53	0.3	10.7
16 - 20	672,666	471,135	4,542	67.5	96.4
21 - 24	570,792	470,489	3,981	69.7	84.6
25 - 64	5,149,843	4,748,323	21,833	42.4	46.0
65 +	1,611,755	1,437,067	3,168	19.7	22.0
Unknown	0	0	2,367	--	--
<b>Total</b>	<b>9,928,300</b>	<b>7,176,692</b>	<b>35,944</b>	<b>36.2</b>	<b>50.1</b>

## 2016 - Vehicles in Crashes

Vehicle Type	Motor Vehicles		Fatal Crashes		Injury Crashes	PDO Crashes
	Number of Vehicles	% of Total	Number	% of Total	Number	Number
Passenger car, SUV, van	29,196	81.2	53	60.2	5,306	23,837
Motor home	722	2.0	0	0.0	122	600
Pickup truck	3,582	10.0	14	15.9	650	2,918
Small truck under 10,000 lbs. GVWR	389	1.1	0	0.0	64	325
Motorcycle	213	0.6	8	9.1	150	55
Moped / goped	27	0.1	1	1.1	19	7
Go-cart / golf cart	4	0.0	0	0.0	2	2
Snowmobile	0	0.0	0	0.0	0	0
Off-Road Vehicle - ORV / All-Terrain Vehicle - ATV	9	0.0	0	0.0	6	3
Other	118	0.3	0	0.0	15	103
Truck/bus over 10,000 lbs.	1,160	3.2	12	13.6	193	955
Unknown	524	1.5	0	0.0	29	495
<b>Total</b>	<b>35,944</b>	<b>100.0</b>	<b>88</b>	<b>100.0</b>	<b>6,556</b>	<b>29,300</b>

# Traffic Safety Network Huron Valley (continued)

## 5-Year Trend - Crashes by Month

Month	2012		2013		2014		2015		2016	
	Total Crashes	Fatal Crashes	Total Crashes	Fatal Crashes	Total Crashes	Fatal Crashes	Total Crashes	Fatal Crashes	Total Crashes	Fatal Crashes
January	1,915	2	1,850	2	2,800	4	2,258	4	1,773	3
February	1,491	6	1,740	5	1,893	7	1,760	1	1,714	5
March	1,326	5	1,234	7	1,624	4	1,312	2	1,664	2
April	1,242	8	1,200	6	1,109	9	1,229	3	1,521	3
May	1,395	3	1,498	6	1,417	7	1,432	4	1,566	3
June	1,408	11	1,445	5	1,414	8	1,576	3	1,612	5
July	1,276	3	1,378	7	1,340	9	1,435	9	1,553	9
August	1,190	9	1,393	7	1,295	5	1,407	4	1,520	7
September	1,398	4	1,477	9	1,521	6	1,583	4	1,659	8
October	1,812	5	1,950	6	1,837	4	1,886	9	1,792	7
November	1,747	8	1,817	9	2,198	3	2,122	3	1,923	4
December	1,913	3	2,089	5	1,476	5	1,670	5	2,092	3
<b>Total</b>	<b>18,113</b>	<b>67</b>	<b>19,071</b>	<b>74</b>	<b>19,924</b>	<b>71</b>	<b>19,670</b>	<b>51</b>	<b>20,389</b>	<b>59</b>

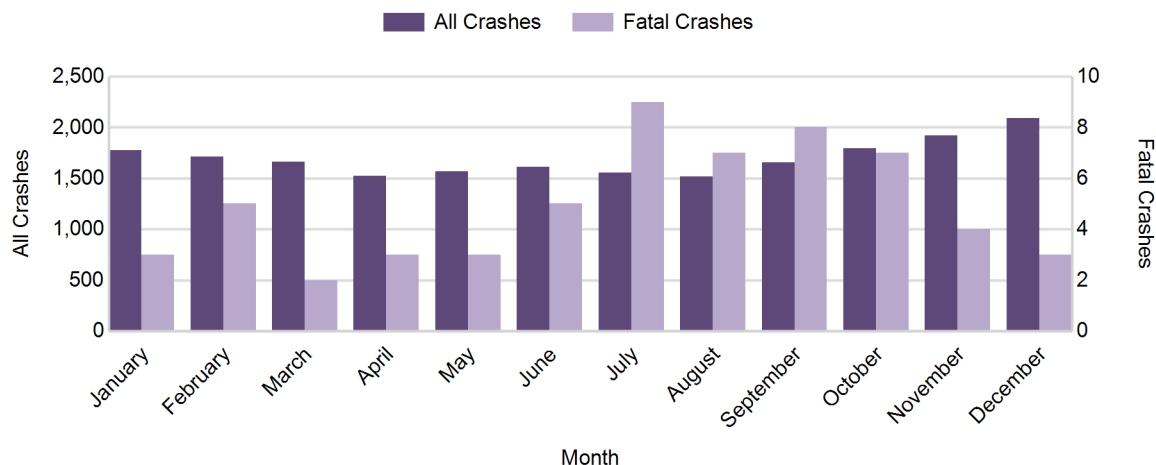
Note: † Indicates that the highest number of total crashes reported in the 5-year period occurred in the same month

## 5-Year Trend - Crashes by Day of Week

Day	2012		2013		2014		2015		2016	
	Total Crashes	Fatal Crashes	Total Crashes	Fatal Crashes	Total Crashes	Fatal Crashes	Total Crashes	Fatal Crashes	Total Crashes	Fatal Crashes
Monday	2,651	5	2,893	11	2,680	5	2,933	3	2,832	9
Tuesday	2,488	12	2,833	5	2,930	6	2,979	3	3,190	9
Wednesday	2,671	7	2,810	12	3,290	12	3,134	14	3,305	7
Thursday	2,576	7	2,881	12	3,274	9	2,813	9	3,262	6
Friday	3,401	13	3,160	16	3,238	14	3,209	11	3,431	11
Saturday	2,481	15	2,555	11	2,472	15	2,624	6	2,452	11
Sunday	1,845	8	1,939	7	2,040	10	1,978	5	1,917	6
<b>Total</b>	<b>18,113</b>	<b>67</b>	<b>19,071</b>	<b>74</b>	<b>19,924</b>	<b>71</b>	<b>19,670</b>	<b>51</b>	<b>20,389</b>	<b>59</b>

Note: † Indicates that the highest number of total crashes reported in the 5-year period occurred on the same day of the week

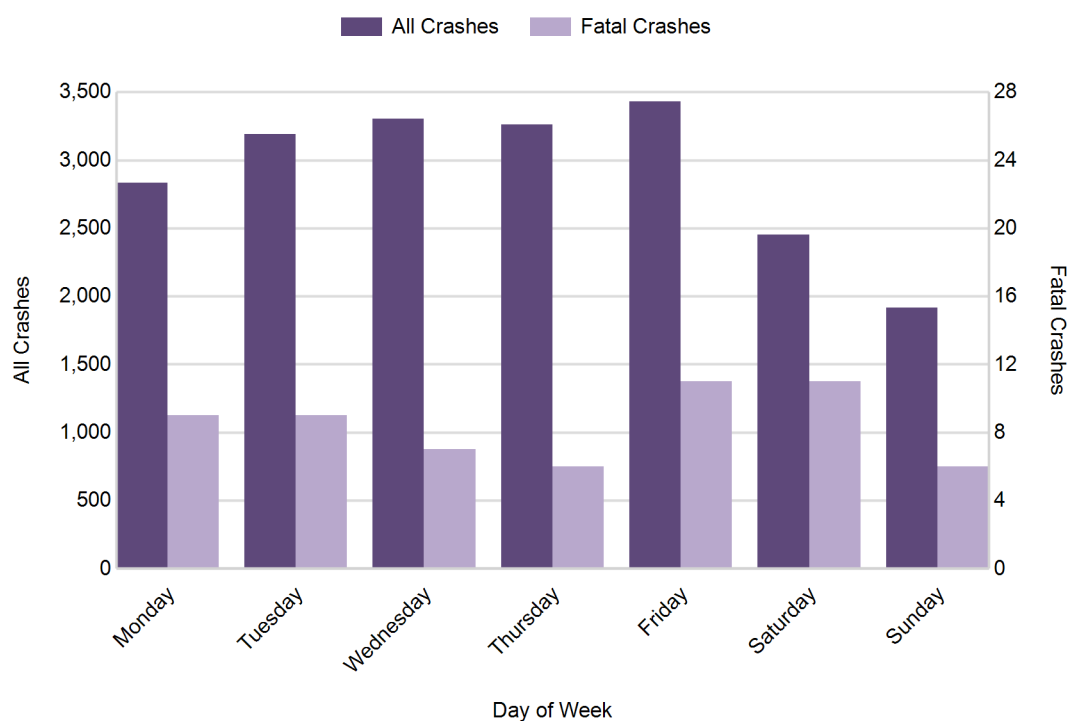
## 2016 Crashes by Month



2016 - Crashes by Day of Week

Day	All Crashes		Fatal Crashes		Injury Crashes			PDO Crashes
	Number	% of Total	Number	% of Fatal	A	B	C	Number
Monday	2,832	13.9	9	15.3	42	168	315	2,298
Tuesday	3,190	15.6	9	15.3	31	170	350	2,630
Wednesday	3,305	16.2	7	11.9	33	153	337	2,775
Thursday	3,262	16.0	6	10.2	35	154	356	2,711
Friday	3,431	16.8	11	18.6	37	198	340	2,845
Saturday	2,452	12.0	11	18.6	47	156	262	1,976
Sunday	1,917	9.4	6	10.2	35	134	209	1,533
<b>Total</b>	<b>20,389</b>	<b>100.0</b>	<b>59</b>	<b>100.0</b>	<b>260</b>	<b>1,133</b>	<b>2,169</b>	<b>16,768</b>

2016 Day of Week and Severity

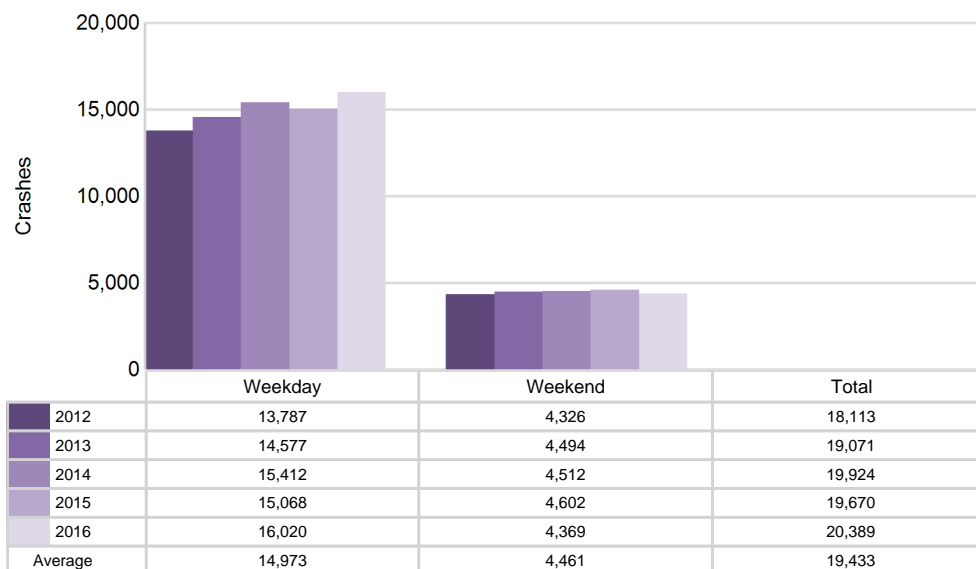


## Traffic Safety Network Huron Valley (continued)

### 5-Year Trend - Crashes by Weekday and Weekend

Portion of Week	2012		2013		2014		2015		2016	
	Total Crashes	Fatal Crashes	Total Crashes	Fatal Crashes	Total Crashes	Fatal Crashes	Total Crashes	Fatal Crashes	Total Crashes	Fatal Crashes
Weekday	13,787	44	14,577	56	15,412	46	15,068	40	16,020	42
Weekend	4,326	23	4,494	18	4,512	25	4,602	11	4,369	17
<b>Total</b>	<b>18,113</b>	<b>67</b>	<b>19,071</b>	<b>74</b>	<b>19,924</b>	<b>71</b>	<b>19,670</b>	<b>51</b>	<b>20,389</b>	<b>59</b>

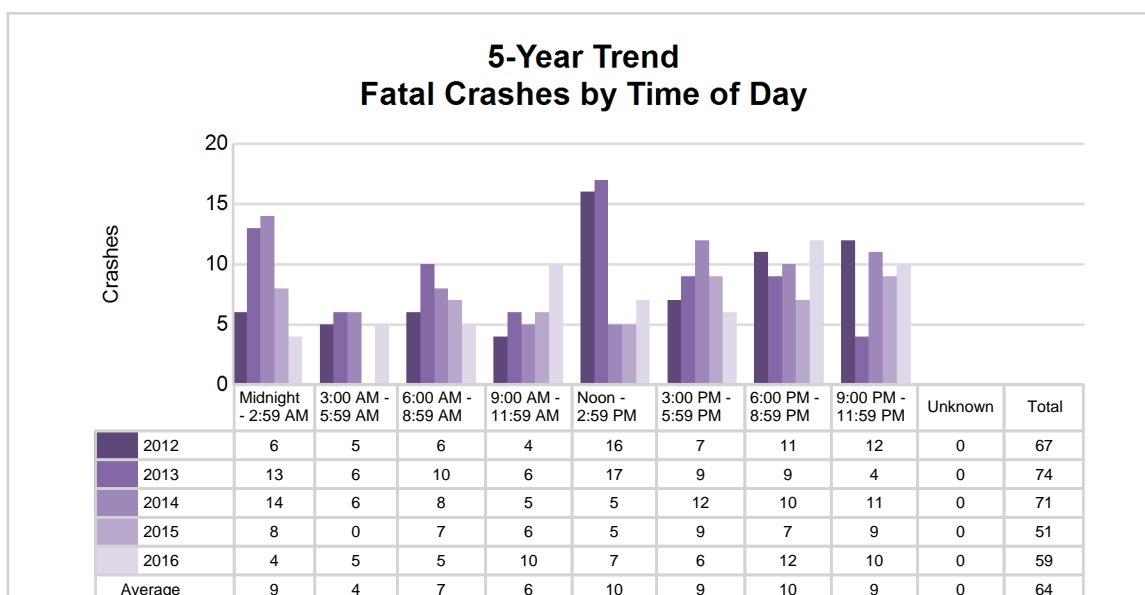
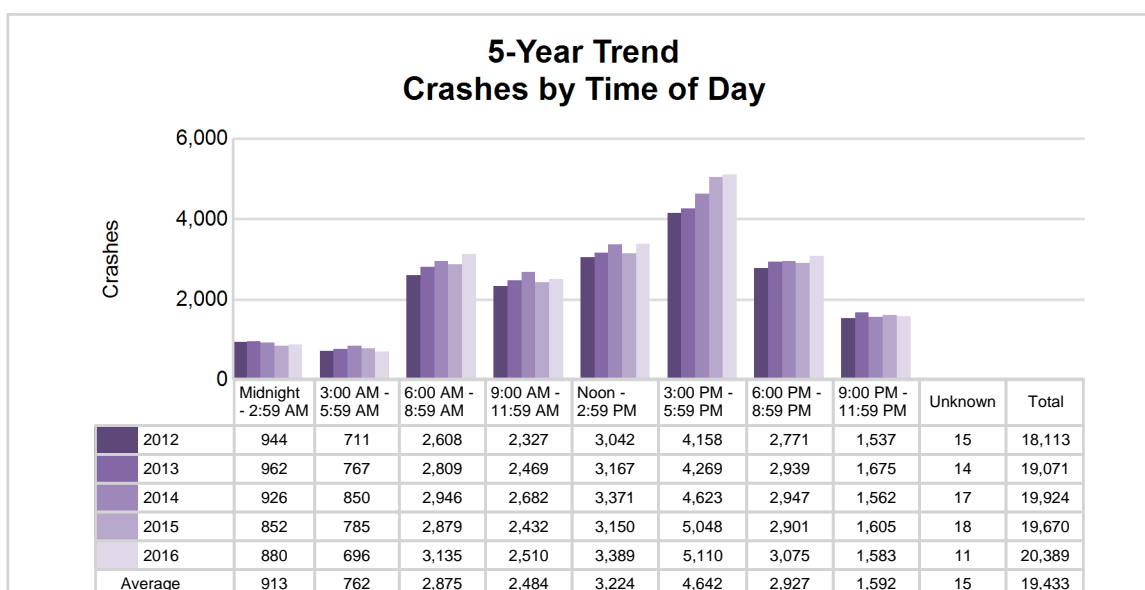
### 5-Year Crash Trends by Weekday (Monday - Friday) and Weekend (Saturday & Sunday)



## 5-Year Trend - Crashes by Time of Day

Time of Day	2012		2013		2014		2015		2016	
	Total Crashes	Fatal Crashes	Total Crashes	Fatal Crashes	Total Crashes	Fatal Crashes	Total Crashes	Fatal Crashes	Total Crashes	Fatal Crashes
Midnight - 2:59 AM	944	6	962	13	926	14	852	8	880	4
3:00 AM - 5:59 AM	711	5	767	6	850	6	785	0	696	5
6:00 AM - 8:59 AM	2,608	6	2,809	10	2,946	8	2,879	7	3,135	5
9:00 AM - 11:59 AM	2,327	4	2,469	6	2,682	5	2,432	6	2,510	10
Noon - 2:59 PM	3,042	16	3,167	17	3,371	5	3,150	5	3,389	7
3:00 PM - 5:59 PM	4,158 †	7	4,269 †	9	4,623 †	12	5,048 †	9	5,110 †	6
6:00 PM - 8:59 PM	2,771	11	2,939	9	2,947	10	2,901	7	3,075	12
9:00 PM - 11:59 PM	1,537	12	1,675	4	1,562	11	1,605	9	1,583	10
Unknown	15	0	14	0	17	0	18	0	11	0
<b>Total</b>	<b>18,113</b>	<b>67</b>	<b>19,071</b>	<b>74</b>	<b>19,924</b>	<b>71</b>	<b>19,670</b>	<b>51</b>	<b>20,389</b>	<b>59</b>

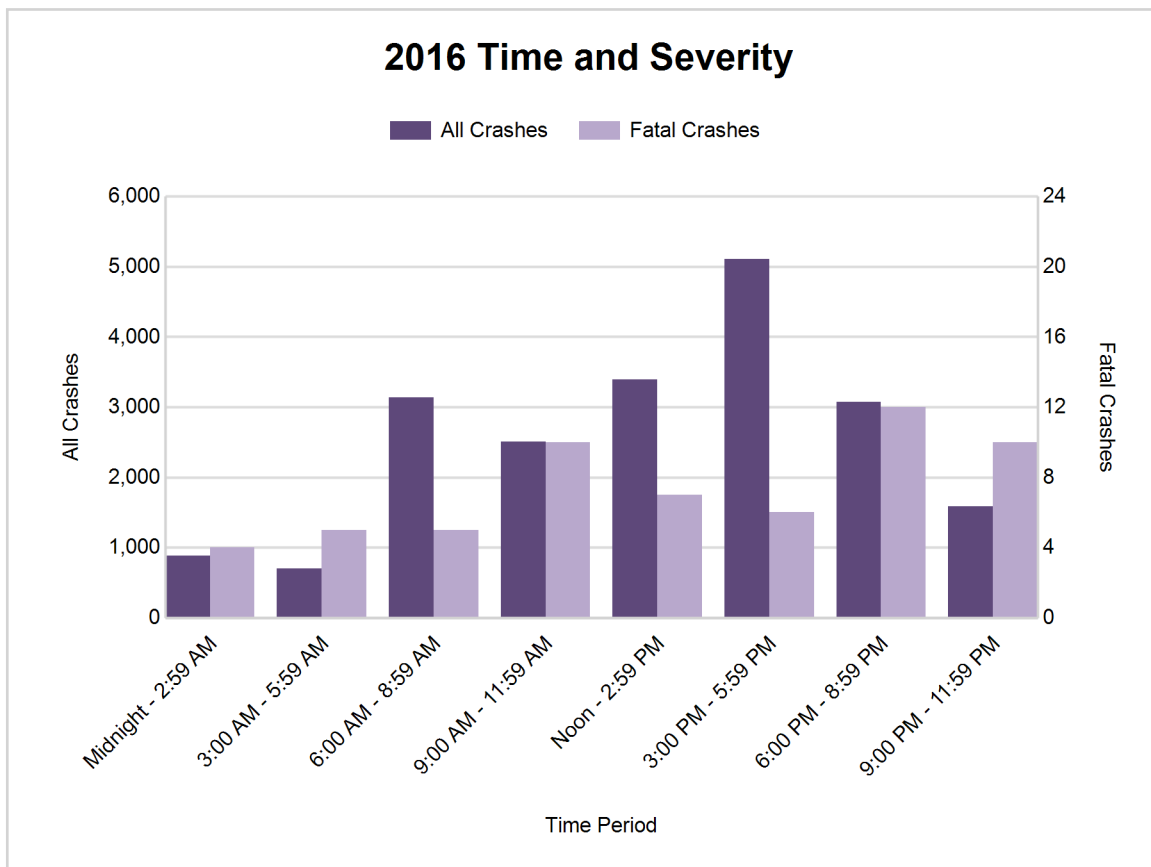
Note: † Indicates that the highest number of total crashes reported in the 5-year period occurred in the same time period



# Traffic Safety Network Huron Valley (continued)

## 2016 - Time and Severity

Time of Day	All Crashes		Fatal Crashes		Injury Crashes			PDO Crashes
	Number	% of Total	Number	% of Fatal	A	B	C	Number
Midnight - 2:59 AM	880	4.3	4	6.8	26	83	78	689
3:00 AM - 5:59 AM	696	3.4	5	8.5	10	41	57	583
6:00 AM - 8:59 AM	3,135	15.4	5	8.5	32	157	309	2,632
9:00 AM - 11:59 AM	2,510	12.3	10	16.9	26	134	260	2,080
Noon - 2:59 PM	3,389	16.6	7	11.9	36	176	420	2,750
3:00 PM - 5:59 PM	5,110	25.1	6	10.2	51	259	592	4,202
6:00 PM - 8:59 PM	3,075	15.1	12	20.3	40	194	306	2,523
9:00 PM - 11:59 PM	1,583	7.8	10	16.9	38	89	147	1,299
Unknown	11	0.1	0	0.0	1	0	0	10
<b>Total</b>	<b>20,389</b>	<b>100.0</b>	<b>59</b>	<b>100.0</b>	<b>260</b>	<b>1,133</b>	<b>2,169</b>	<b>16,768</b>

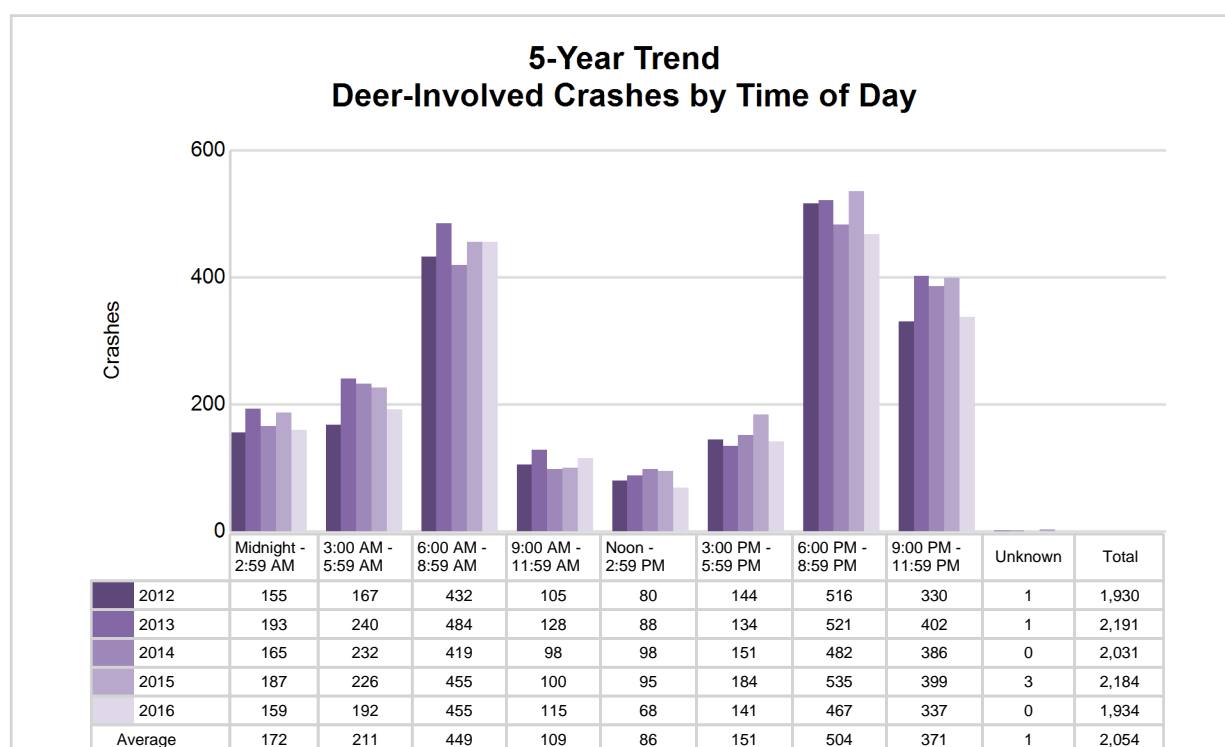




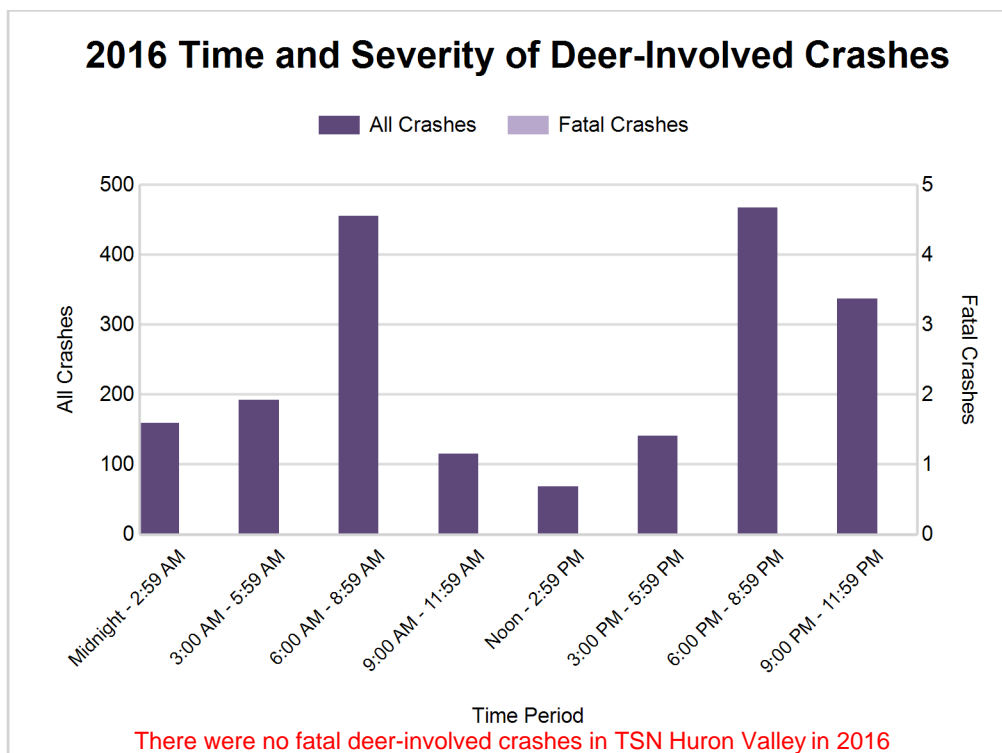
## 5-Year Trend - Deer-Involved Crashes by Time of Day

Time of Day	2012		2013		2014		2015		2016	
	Total Crashes	Fatal Crashes	Total Crashes	Fatal Crashes	Total Crashes	Fatal Crashes	Total Crashes	Fatal Crashes	Total Crashes	Fatal Crashes
Midnight - 2:59 AM	155	0	193	0	165	0	187	0	159	0
3:00 AM - 5:59 AM	167	0	240	0	232	0	226	0	192	0
6:00 AM - 8:59 AM	432	0	484	0	419	0	455	0	455	0
9:00 AM - 11:59 AM	105	0	128	0	98	0	100	0	115	0
Noon - 2:59 PM	80	0	88	0	98	0	95	0	68	0
3:00 PM - 5:59 PM	144	0	134	0	151	0	184	0	141	0
6:00 PM - 8:59 PM	516 †	0	521 †	1	482 †	0	535 †	1	467 †	0
9:00 PM - 11:59 PM	330	0	402	0	386	0	399	0	337	0
Unknown	1	0	1	0	0	0	3	0	0	0
<b>Total</b>	<b>1,930</b>	<b>0</b>	<b>2,191</b>	<b>1</b>	<b>2,031</b>	<b>0</b>	<b>2,184</b>	<b>1</b>	<b>1,934</b>	<b>0</b>

Note: † Indicates that the highest number of total crashes reported in the 5-year period occurred in the same time period



## Traffic Safety Network Huron Valley (continued)



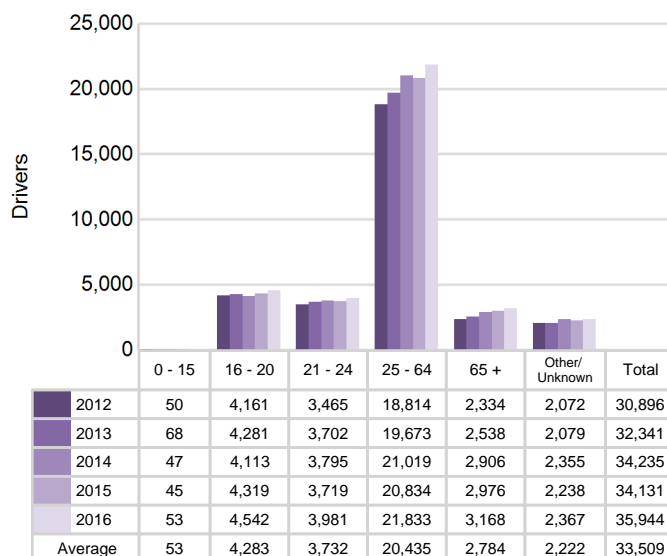
### 2016 - Reported Motor Vehicle Crashes by County

County	Crashes											Persons	
	Total	Fatal	Injury	Property Damage	Inter-state	US Route	State Route	Local Street	Alcohol-Involved	Drug-Involved	Deer-Involved	Fatalities	Injuries
Livingston	4,929	20	788	4,121	1,029	658	672	2,556	202	47	621	22	1,046
Monroe	3,758	16	665	3,077	582	721	420	2,020	183	53	352	18	930
Washtenaw	11,702	23	2,109	9,570	1,752	1,979	967	6,998	329	103	961	25	2,791
<b>Total</b>	<b>20,389</b>	<b>59</b>	<b>3,562</b>	<b>16,768</b>	<b>3,363</b>	<b>3,358</b>	<b>2,059</b>	<b>11,574</b>	<b>714</b>	<b>203</b>	<b>1,934</b>	<b>65</b>	<b>4,767</b>

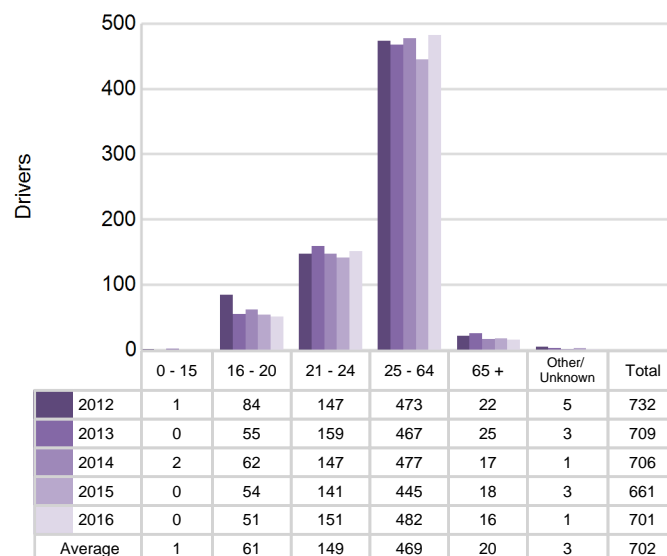
## 5-Year Trend - Drivers in Crashes Coded Drinking by Driver Age

Driver Age	2012		2013		2014		2015		2016	
	Total Drivers in Crashes	Total Drivers Coded Drinking	Total Drivers in Crashes	Total Drivers Coded Drinking	Total Drivers in Crashes	Total Drivers Coded Drinking	Total Drivers in Crashes	Total Drivers Coded Drinking	Total Drivers in Crashes	Total Drivers Coded Drinking
0 - 15	50	1	68	0	47	2	45	0	53	0
16 - 20	4,161	84	4,281	55	4,113	62	4,319	54	4,542	51
21 - 24	3,465	147	3,702	159	3,795	147	3,719	141	3,981	151
25 - 64	18,814	473	19,673	467	21,019	477	20,834	445	21,833	482
65 +	2,334	22	2,538	25	2,906	17	2,976	18	3,168	16
Unknown	2,072	5	2,079	3	2,355	1	2,238	3	2,367	1
<b>Total</b>	<b>30,896</b>	<b>732</b>	<b>32,341</b>	<b>709</b>	<b>34,235</b>	<b>706</b>	<b>34,131</b>	<b>661</b>	<b>35,944</b>	<b>701</b>

**5-Year Trend  
Total Drivers in Crashes by Age**



**5-Year Trend  
Total Drivers Coded Drinking by Age**



# Traffic Safety Network Huron Valley (continued)

## 2016 - Bodily Alcohol Concentration (BAC) Results Among All Vehicle Drivers in Alcohol-Involved Crashes by Age

Age Group	Drivers				BAC Result Range for Drivers Coded Drinking				
	Total Drivers in Alcohol-Involved Crashes	Total Drivers Tested in all Crashes	Total Drivers Coded Drinking, Tested	Total Drivers Coded Drinking	BAC = 0.00	BAC 0.01 g/dL to 0.07 g/dL	BAC 0.08 g/dL to 0.16 g/dL	BAC 0.17 g/dL and Above	BAC Not Reported
0 - 15	0	0	0	0	0	0	0	0	0
16 - 20	79	62	41	51	4	7	13	6	21
21 - 24	183	152	124	151	3	11	40	37	60
25 - 64	653	507	418	482	8	38	108	150	178
65 +	35	26	14	16	0	0	6	5	5
Unknown	54	0	0	1	0	0	0	0	1
<b>Total</b>	<b>1,004</b>	<b>747</b>	<b>597</b>	<b>701</b>	<b>15</b>	<b>56</b>	<b>167</b>	<b>198</b>	<b>265</b>

Notes: BAC measured in grams (g) per deciliter (dL).

BAC may not be reported if drivers are not tested or if the results are not available immediately (as in the case of a blood test).

A driver may be coded by the officer as drinking even though no test is administered.

## Alcohol-Involved Crashes

In 2016, there were 1,004 drivers in alcohol-involved crashes; 701 (69.8%) of those drivers were coded as had-been-drinking by the officer on the crash form.

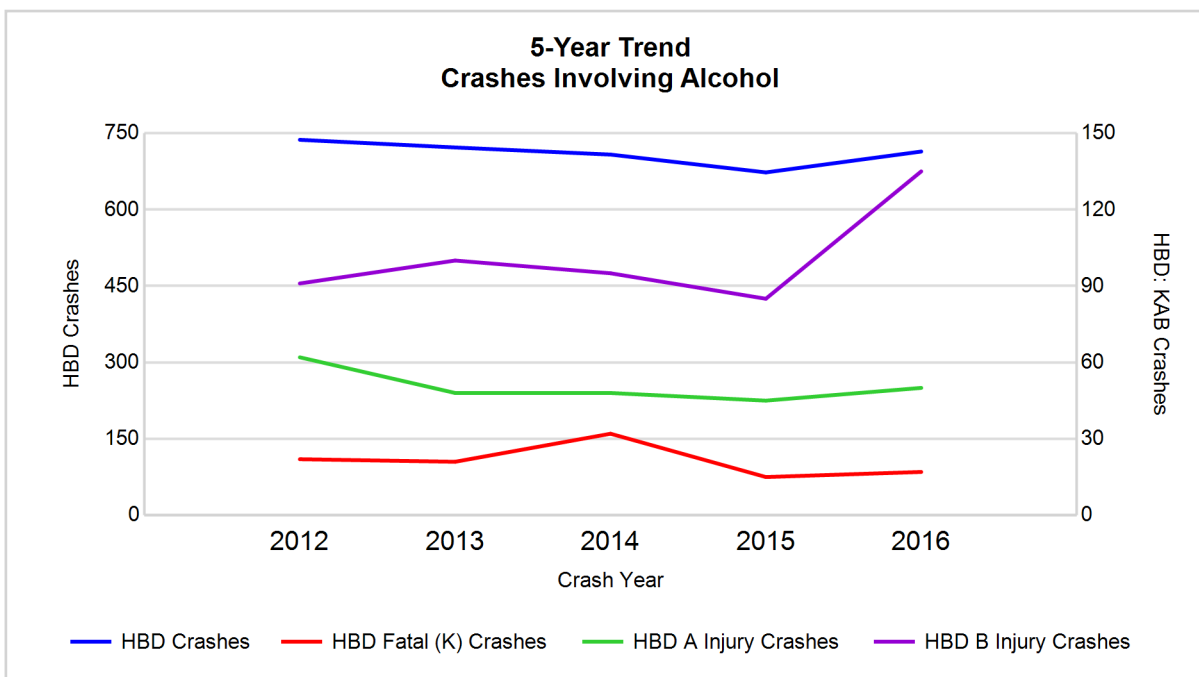
- 365 (52.1%) of the 701 drivers had a blood alcohol concentration (BAC) of 0.08 g/dL (grams per deciliter) or greater, and 198 (54.2%) of the 365 drivers had a BAC at or above 0.17 g/dL.
- 597 (85.2%) of the 701 drivers were coded as had-been-drinking and were tested for alcohol consumption.

## 5-Year Trend - Crashes Involving Alcohol

Year	All Crashes	HBD Crashes	% HBD	Fatal Crashes	HBD Fatal Crashes	% HBD	A Injury Crashes	HBD A Injury Crashes	% HBD	B Injury Crashes	HBD B Injury Crashes	% HBD
2012	18,113	737	4.1	67	22	32.8	274	62	22.6	922	91	9.9
2013	19,071	722	3.8	74	21	28.4	271	48	17.7	945	100	10.6
2014	19,924	708	3.6	71	32	45.1	249	48	19.3	889	95	10.7
2015	19,670	673	3.4	51	15	29.4	211	45	21.3	937	85	9.1
2016	20,389**	714	3.5	59	17	28.8	260	50	19.2	1,133**	135**	11.9**

Note: \* Indicates that the most recent year is the lowest number or percentage reported in the 5-year period in that column

\*\* Indicates that the most recent year is the highest number or percentage reported in the 5-year period in that column



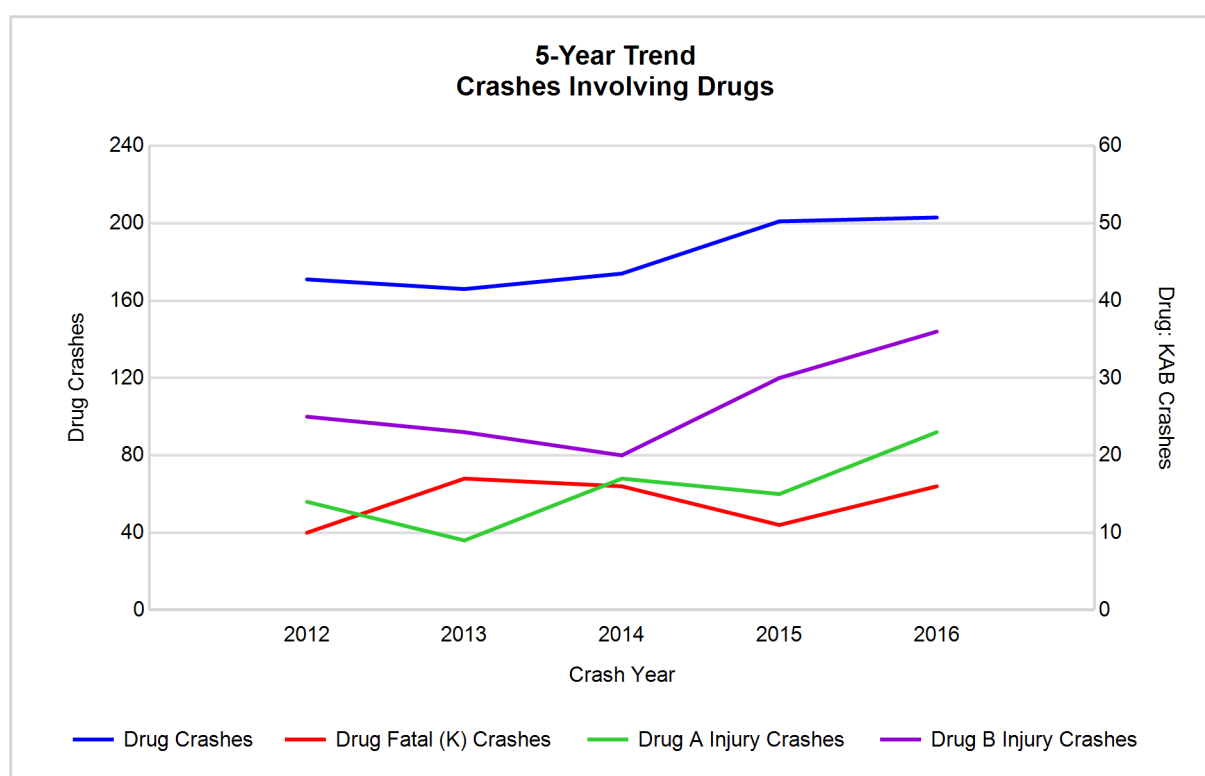
Note: Had-Been-Drinking (HBD)

## 5-Year Trend - Crashes Involving Drugs

Year	All Crashes	Drug Crashes	% Drug	Fatal Crashes	Drug Fatal Crashes	% Drug	A Injury Crashes	Drug A Injury Crashes	% Drug	B Injury Crashes	Drug B Injury Crashes	% Drug
2012	18,113	171	0.9	67	10	14.9	274	14	5.1	922	25	2.7
2013	19,071	166	0.9	74	17	23.0	271	9	3.3	945	23	2.4
2014	19,924	174	0.9	71	16	22.5	249	17	6.8	889	20	2.2
2015	19,670	201	1.0	51	11	21.6	211	15	7.1	937	30	3.2
2016	20,389**	203**	1.0	59	16	27.1**	260	23**	8.8**	1,133**	36**	3.2

Note: \* Indicates that the most recent year is the lowest number or percentage reported in the 5-year period in that column

\*\* Indicates that the most recent year is the highest number or percentage reported in the 5-year period in that column



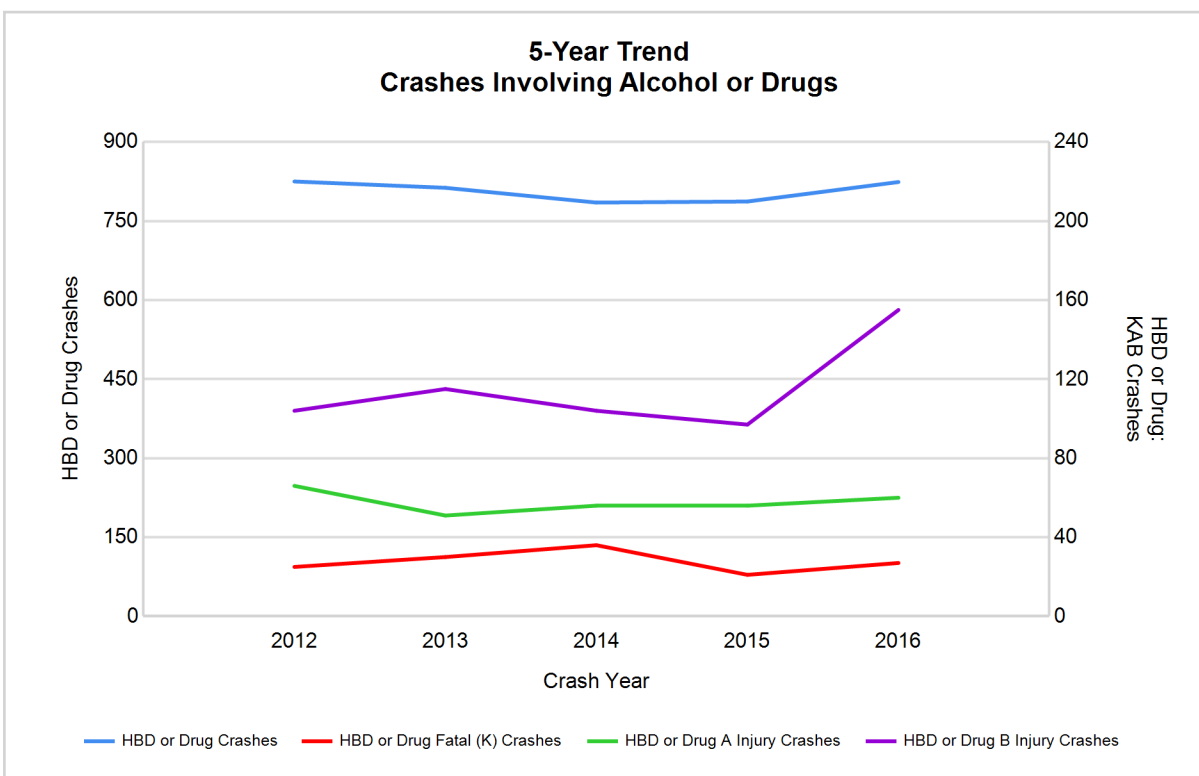
# Traffic Safety Network Huron Valley (continued)

## 5-Year Trend - Crashes Involving Alcohol or Drugs

Year	All Crashes	HBD or Drug Crashes	% HBD or Drug	Fatal Crashes	HBD or Drug Fatal Crashes	% HBD or Drug	A Injury Crashes	HBD or Drug A Injury Crashes	% HBD or Drug	B Injury Crashes	HBD or Drug B Injury Crashes	% HBD or Drug
2012	18,113	825	4.6	67	25	37.3	274	66	24.1	922	104	11.3
2013	19,071	813	4.3	74	30	40.5	271	51	18.8	945	115	12.2
2014	19,924	785	3.9	71	36	50.7	249	56	22.5	889	104	11.7
2015	19,670	787	4.0	51	21	41.2	211	56	26.5	937	97	10.4
2016	20,389**	824	4.0	59	27	45.8	260	60	23.1	1,133**	155**	13.7**

Note: \* Indicates that the most recent year is the lowest number or percentage reported in the 5-year period in that column

\*\* Indicates that the most recent year is the highest number or percentage reported in the 5-year period in that column



Note: Had-Been-Drinking (HBD)

## 2016 - Restraints Worn Among Vehicle Drivers and Injured Passengers by Vehicle Type

Vehicle Type	Total Occupants			Fatalities			A - Suspected Serious			B - Suspected Minor			C - Possible Injury			No Injury		
	Total	Used Restraint	%	Total	Used Restraint	%	Total	Used Restraint	%	Total	Used Restraint	%	Total	Used Restraint	%	Total	Used Restraint	%
Passenger car, SUV, van	30,044	27,800	92.5	25	20	80.0	183	148	80.9	989	903	91.3	2,597	2,485	95.7	24,849	24,241	97.6
Motor home	752	698	92.8	0	0	0.0	2	0	0.0	27	25	92.6	57	57	100.0	631	616	97.6
Pickup truck	3,660	3,301	90.2	9	3	33.3	22	17	77.3	105	90	85.7	233	211	90.6	3,090	2,979	96.4
Small truck under 10,000 lbs. GVWR	393	359	91.3	0	0	0.0	4	2	50.0	11	10	90.9	23	22	95.7	333	325	97.6
Motorcycle	233	142	60.9	10	3	30.0	34	17	50.0	75	50	66.7	48	38	79.2	53	34	64.2
Moped / goped	28	6	21.4	1	0	0.0	5	2	40.0	11	4	36.4	4	0	0.0	5	0	0.0
Go-cart / golf cart	5	3	60.0	0	0	0.0	2	1	50.0	1	1	100.0	0	0	0.0	1	1	100.0
Snowmobile	0	0	0.0	0	0	0.0	0	0	0.0	0	0	0.0	0	0	0.0	0	0	0.0
Off-Road Vehicle - ORV / All-Terrain Vehicle - ATV	11	1	9.1	0	0	0.0	5	1	20.0	3	0	0.0	0	0	0.0	3	0	0.0
Other	119	58	48.7	0	0	0.0	2	0	0.0	1	1	100.0	3	2	66.7	79	55	69.6
Truck/bus over 10,000 lbs.	1,175	1,061	90.3	3	2	66.7	8	7	87.5	14	11	78.6	36	24	66.7	1,050	1,017	96.9
Unknown	524	7	1.3	0	0	0.0	0	0	0.0	0	0	0.0	0	0	0.0	16	4	25.0
<b>Total</b>	<b>36,944</b>	<b>33,436</b>	<b>90.5</b>	<b>48</b>	<b>28</b>	<b>58.3</b>	<b>267</b>	<b>195</b>	<b>73.0</b>	<b>1,237</b>	<b>1,095</b>	<b>88.5</b>	<b>3,001</b>	<b>2,839</b>	<b>94.6</b>	<b>30,110</b>	<b>29,272</b>	<b>97.2</b>

Note: Restraint Use includes shoulder belt only used, lap belt only used, both lap and shoulder belts used, child restraint used, restraint failure, and helmet worn.

## 2016 - Restraints Worn Among Vehicle Drivers and Injured Passengers by Age

Age Group	Total Occupants			Fatalities			A - Suspected Serious			B - Suspected Minor			C - Possible Injury			No Injury		
	Total	Used Restraint	%	Total	Used Restraint	%	Total	Used Restraint	%	Total	Used Restraint	%	Total	Used Restraint	%	Total	Used Restraint	%
0 - 15	294	261	88.8	0	0	0.0	12	9	75.0	48	43	89.6	188	168	89.4	44	41	93.2
16 - 20	4,690	4,549	97.0	4	2	50.0	28	21	75.0	202	176	87.1	356	339	95.2	4,095	4,010	97.9
21 - 24	4,066	3,923	96.5	3	2	66.7	38	27	71.1	178	154	86.5	296	283	95.6	3,546	3,455	97.4
25 - 64	22,233	21,471	96.6	32	16	50.0	160	113	70.6	665	593	89.2	1,814	1,712	94.4	19,533	19,036	97.5
65 +	3,289	3,205	97.4	9	8	88.9	29	25	86.2	144	129	89.6	346	337	97.4	2,760	2,706	98.0
Unknown	2,372	27	1.1	0	0	0.0	0	0	0.0	0	0	0.0	1	0	0.0	132	24	18.2
<b>Total</b>	<b>36,944</b>	<b>33,436</b>	<b>90.5</b>	<b>48</b>	<b>28</b>	<b>58.3</b>	<b>267</b>	<b>195</b>	<b>73.0</b>	<b>1,237</b>	<b>1,095</b>	<b>88.5</b>	<b>3,001</b>	<b>2,839</b>	<b>94.6</b>	<b>30,110</b>	<b>29,272</b>	<b>97.2</b>

Note: Restraint Use includes shoulder belt only used, lap belt only used, both lap and shoulder belts used, child restraint used, restraint failure, and helmet worn.

# Traffic Safety Network Huron Valley (continued)

## 5-Year Trend - Restraint Use Among Drivers

Restraint Use	2012			2013			2014			2015			2016		
	Drivers	Fatal Drivers	Injured Drivers	Drivers	Fatal Drivers	Injured Drivers	Drivers	Fatal Drivers	Injured Drivers	Drivers	Fatal Drivers	Injured Drivers	Drivers	Fatal Drivers	Injured Drivers
No belts available	91	0	10	63	1	8	61	1	10	66	1	13	53	0	8
Shoulder belt only used	12	0	2	16	0	3	10	1	0	10	0	2	41	0	7
Lap belt only used	52	0	10	39	1	1	41	0	3	46	0	4	37	0	5
Both lap & shoulder belts used	27,790	19	2,927	29,280	27	2,844	30,826	20	2,855	30,858	11	2,986	32,356	20	3,162
No belts used	201	9	93	198	18	92	171	12	88	165	7	74	182	4	88
Child restraint used	0	0	0	0	0	0	0	0	0	1	0	0	1	0	0
Child restraint not used, unavailable or improper use	0	0	0	1	0	0	2	0	0	0	0	0	1	0	0
Restraint failure	6	0	0	3	0	2	2	0	1	2	0	0	0	0	0
Restraint use unknown	1,631	5	79	1,686	3	73	2,040	7	69	1,849	2	71	2,402	6	98
Helmet worn	212	5	158	188	4	133	173	10	118	154	6	100	136	2	100
Helmet not worn	64	4	48	69	3	48	67	4	49	93	5	59	82	6	54
Helmet use unknown	8	1	4	8	0	4	14	0	9	17	2	7	16	0	11
Uncoded & errors	829	0	0	790	0	1	828	0	0	870	0	0	637	0	0
<b>Total</b>	<b>30,896</b>	<b>43</b>	<b>3,331</b>	<b>32,341</b>	<b>57</b>	<b>3,209</b>	<b>34,235</b>	<b>55</b>	<b>3,202</b>	<b>34,131</b>	<b>34</b>	<b>3,316</b>	<b>35,944</b>	<b>38</b>	<b>3,533</b>

## 5-Year Trend - Restraint Use Among Drivers Coded Drinking

Restraint Use	2012			2013			2014			2015			2016		
	Drivers	Fatal Drivers	Injured Drivers	Drivers	Fatal Drivers	Injured Drivers	Drivers	Fatal Drivers	Injured Drivers	Drivers	Fatal Drivers	Injured Drivers	Drivers	Fatal Drivers	Injured Drivers
No belts available	0	0	0	2	0	2	3	1	0	4	0	3	1	0	0
Shoulder belt only used	0	0	0	1	0	1	1	1	0	0	0	0	4	0	0
Lap belt only used	1	0	1	0	0	0	0	0	0	3	0	1	1	0	0
Both lap & shoulder belts used	554	4	152	548	5	147	539	6	146	510	1	121	519	2	174
No belts used	62	4	40	49	7	27	53	7	36	36	3	22	44	3	27
Child restraint used	0	0	0	0	0	0	0	0	0	0	0	0	0	0	0
Child restraint not used, unavailable or improper use	0	0	0	0	0	0	0	0	0	0	0	0	0	0	0
Restraint failure	0	0	0	0	0	0	0	0	0	0	0	0	0	0	0
Restraint use unknown	95	2	32	85	0	24	94	3	27	90	1	26	101	1	41
Helmet worn	9	2	7	11	0	7	8	2	5	5	0	5	10	0	9
Helmet not worn	6	1	4	12	2	9	8	3	4	12	4	7	19	1	17
Helmet use unknown	2	1	1	1	0	0	0	0	0	1	0	0	1	0	1
Uncoded & errors	3	0	0	0	0	0	0	0	0	0	0	0	1	0	0
<b>Total</b>	<b>732</b>	<b>14</b>	<b>237</b>	<b>709</b>	<b>14</b>	<b>217</b>	<b>706</b>	<b>23</b>	<b>218</b>	<b>661</b>	<b>9</b>	<b>185</b>	<b>701</b>	<b>7</b>	<b>269</b>

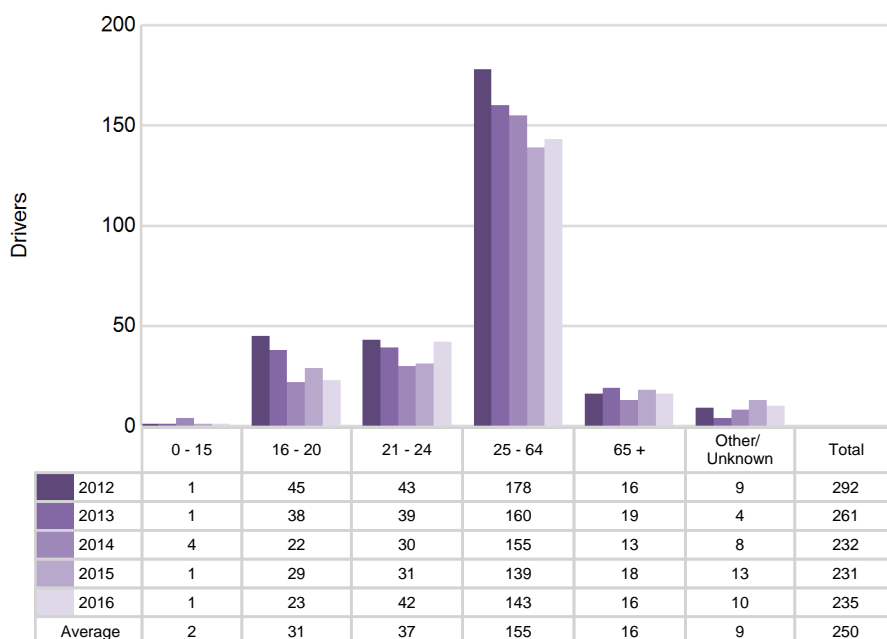


## 5-Year Trend - Seatbelt Not Used Among Drivers by Age

Age Group	2012			2013			2014			2015			2016		
	Drivers	Fatal Drivers	Injured Drivers	Drivers	Fatal Drivers	Injured Drivers	Drivers	Fatal Drivers	Injured Drivers	Drivers	Fatal Drivers	Injured Drivers	Drivers	Fatal Drivers	Injured Drivers
0 - 15	1	0	0	1	0	1	4	0	3	1	0	1	1	0	0
16 - 20	45	1	18	38	2	14	22	1	11	29	1	9	23	0	10
21 - 24	43	2	21	39	4	13	30	3	14	31	2	18	42	0	20
25 - 64	178	5	59	160	9	66	155	8	66	139	5	53	143	4	55
65 +	16	1	4	19	4	6	13	1	3	18	0	5	16	0	11
Unknown	9	0	1	4	0	0	8	0	1	13	0	1	10	0	0
<b>Total</b>	<b>292</b>	<b>9</b>	<b>103</b>	<b>261</b>	<b>19</b>	<b>100</b>	<b>232</b>	<b>13</b>	<b>98</b>	<b>231</b>	<b>8</b>	<b>87</b>	<b>235</b>	<b>4</b>	<b>96</b>

Note: Seatbelt Not Used includes no belts available or no belts used.

## 5-Year Trend Driver Seatbelt Not Used



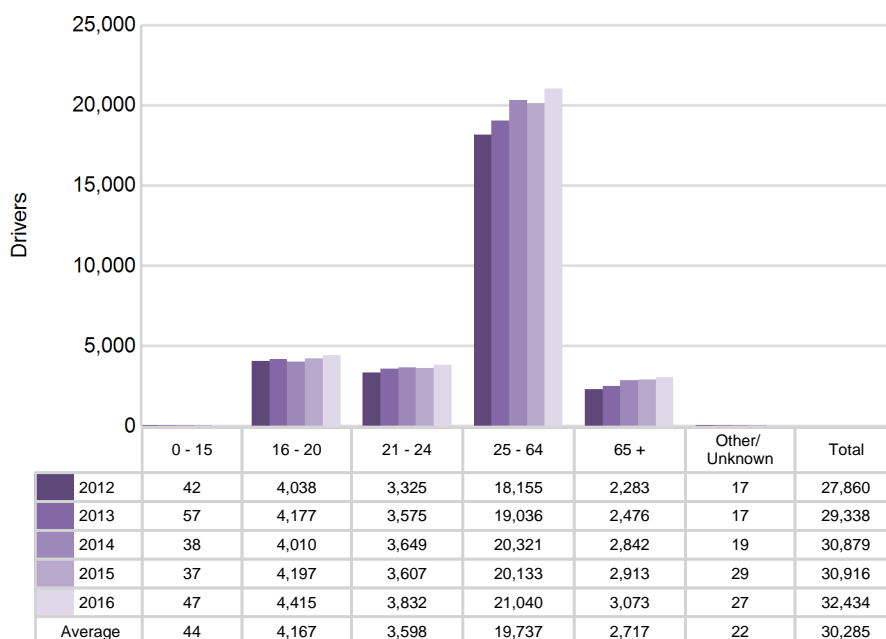
# Traffic Safety Network Huron Valley (continued)

## 5-Year Trend - Seatbelt Used Among Drivers by Age

Age Group	2012			2013			2014			2015			2016		
	Drivers	Fatal Drivers	Injured Drivers	Drivers	Fatal Drivers	Injured Drivers	Drivers	Fatal Drivers	Injured Drivers	Drivers	Fatal Drivers	Injured Drivers	Drivers	Fatal Drivers	Injured Drivers
0 - 15	42	0	4	57	0	7	38	0	5	37	0	4	47	0	6
16 - 20	4,038	2	435	4,177	2	398	4,010	4	357	4,197	3	398	4,415	1	407
21 - 24	3,325	4	340	3,575	1	348	3,649	4	322	3,607	1	324	3,832	1	380
25 - 64	18,155	10	1,917	19,036	18	1,828	20,321	7	1,858	20,133	4	1,944	21,040	11	2,015
65 +	2,283	3	242	2,476	7	269	2,842	6	315	2,913	3	322	3,073	7	366
Unknown	17	0	1	17	0	0	19	0	2	29	0	0	27	0	0
<b>Total</b>	<b>27,860</b>	<b>19</b>	<b>2,939</b>	<b>29,338</b>	<b>28</b>	<b>2,850</b>	<b>30,879</b>	<b>21</b>	<b>2,859</b>	<b>30,916</b>	<b>11</b>	<b>2,992</b>	<b>32,434</b>	<b>20</b>	<b>3,174</b>

Note: Seatbelt Used includes shoulder belt only used, lap belt only used, both lap and shoulder belts used, and restraint failure.

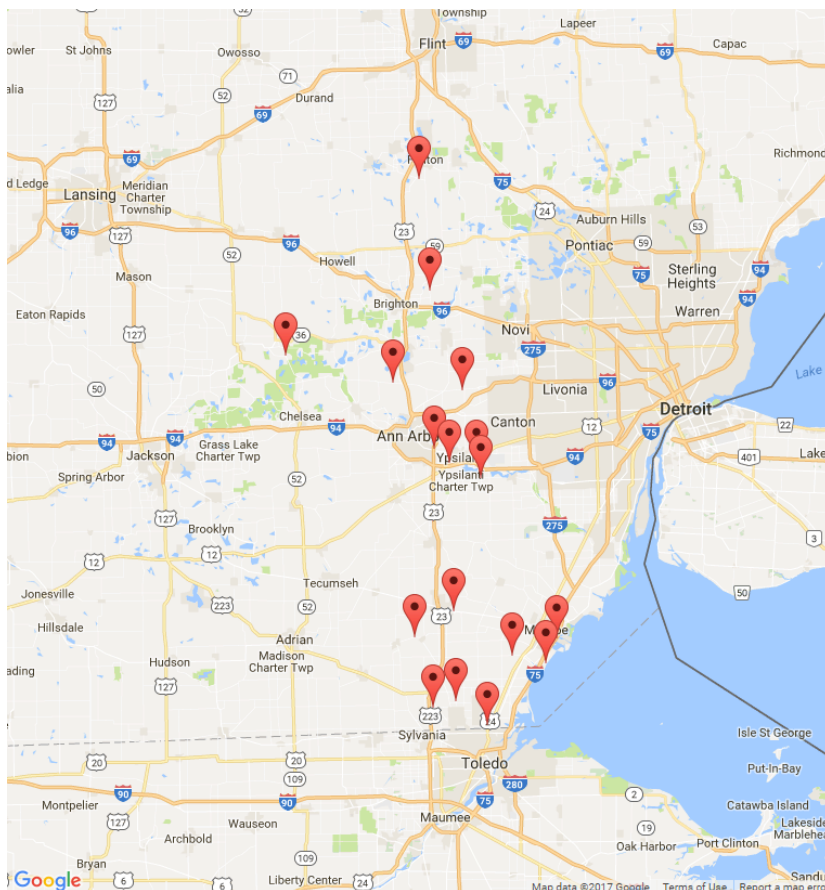
## 5-Year Trend Driver Seatbelt Used



## 5-Year Trend - Drivers in Crashes by Hazardous Action

Hazardous Action	2012		2013		2014		2015		2016	
	Total Drivers in Crashes	Drivers in Fatal Crashes	Total Drivers in Crashes	Drivers in Fatal Crashes	Total Drivers in Crashes	Drivers in Fatal Crashes	Total Drivers in Crashes	Drivers in Fatal Crashes	Total Drivers in Crashes	Drivers in Fatal Crashes
None	14,927	44	15,576	42	16,378	35	16,779	40	17,416	39
Speed too fast	2,432	13	2,746	13	3,140	14	2,387	12	2,212	9
Speed too slow	11	1	13	0	10	0	11	0	13	0
Failed to yield	2,621	8	2,723	10	2,905	12	2,919	3	3,386	4
Disregard traffic control	387	2	370	3	367	1	440	4	447	3
Drove wrong way	22	0	21	0	23	1	6	0	13	0
Drove left of center	177	4	178	11	179	3	192	4	162	3
Improper passing	163	1	169	1	189	0	178	0	175	2
Improper lane use	654	0	681	0	714	0	735	0	809	1
Improper turn	266	0	272	0	281	1	298	0	345	0
Improper/no signal	60	0	50	1	52	1	71	0	54	0
Improper backing	412	0	439	0	506	0	454	0	398	0
Unable to stop in assured clear distance	4,782	7	4,973	1	5,047	4	5,367	3	5,942	2
Other	978	6	1,070	11	1,064	9	929	6	937	3
Unknown	964	8	1,078	6	1,180	8	1,108	5	1,394	7
Reckless driving	223	2	188	8	153	4	170	3	199	4
Careless/negligent driving	1,296	8	1,259	4	1,413	14	1,565	7	1,500	11
Uncoded & errors	521	1	535	3	634	0	522	0	542	0
<b>Total</b>	<b>30,896</b>	<b>105</b>	<b>32,341</b>	<b>114</b>	<b>34,235</b>	<b>107</b>	<b>34,131</b>	<b>87</b>	<b>35,944</b>	<b>88</b>

## Traffic Safety Network Huron Valley (continued)



The picture above represents all 2016 alcohol-involved fatal crashes in TSN Huron Valley.

In 2016, there were 714 alcohol-involved crashes in TSN Huron Valley:

17	K - Fatal Crashes
50	A - Suspected Serious Injury Crashes
135	B - Suspected Minor Injury Crashes
139	C - Possible Injury Crashes
373	O - Property Damage Only/No Injury Crashes

### Office of Highway Safety Planning

---

Physical Address:  
7150 Harris Drive  
Dimondale, Michigan 48821

Mailing Address:  
P.O. Box 30634  
Lansing, Michigan 48909

Phone: (517) 284-3112  
Fax: (517) 284-3151

Find us on the web:  
[MichiganTrafficCrashFacts.org](http://MichiganTrafficCrashFacts.org)

