



2016

**MTCF**  
Michigan Traffic  
Crash Facts

# Michigan Traffic Crash Facts

## Reporting Criteria

Please pay particular attention to the wording when interpreting the three levels of data gathered for this report.

### Crash

The Crash Level analyzes data related to crash events and returns one result per crash.

Examples: Time, weather, and location.

### Units

The Units Level analyzes the experience of the units in the crash and returns one result per vehicle, driver, pedestrian, bicyclist, or train.

Examples: Vehicle type, driver condition, and unit events.

### People

The People Level analyzes the experience of the people involved in the crash and returns one result per occupant/person/party.

Examples: Age, injury severity, and seat belt or helmet use.

### **KABCO Injury Indicator:**

K = Killed

A = Suspected Serious Injury

B = Suspected Minor Injury

C = Possible Injury

O = No Injury

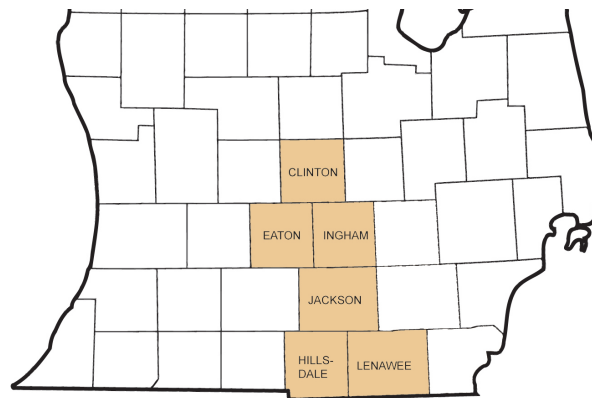
Property Damage Only (PDO)



## Traffic Safety Network Capital Area

### 2016 Traffic Crash Data & 2012-2016 5-Year Trends

Traffic Safety Network Capital Area is comprised of Clinton, Eaton, Hillsdale, Ingham, Jackson, and Lenawee counties. Trend tables for this report are based on those counties.



### Sources:

The crashes in this report occurred on public roadways in Michigan and resulted in injuries, fatalities, or property damage (with \$1,000 as a reporting threshold). The information was gathered from Michigan Traffic Crash Report Forms (UD-10) submitted by local police departments, sheriff's offices, and the Michigan State Police. Other related information was obtained from the departments of Transportation, State, and Community Health.

This page left intentionally blank

## TSN Capital Area Experience

In 2016:

There were 40,050 drivers involved in 24,783 motor vehicle crashes in Traffic Safety Network Capital Area. Of those crashes, 82 were classified as fatal, resulting in 88 fatalities. An additional 5,730 persons were injured.

Traffic Safety Network Capital Area experienced the highest number of motor vehicle crashes (2,689) in November, the highest number of fatal crashes (13) and the highest number of persons killed (13) in September.

Michigan driver statistics indicate 6.6 percent of licensed drivers in Traffic Safety Network Capital Area were age 16-20, and 12.1 percent of drivers in crashes were also in that age group.

## 2016 - Crashes and Injuries by Month

Month	Crashes				Persons	
	Total	Fatal	Injury	Property Damage Only (PDO)	Fatalities	Injuries
January	2,362	1	308	2,053	1	406
February	2,199	3	369	1,827	3	476
March	1,922	3	294	1,625	3	400
April	1,591	8	294	1,289	9	398
May	1,879	8	374	1,497	8	534
June	1,791	10	348	1,433	10	481
July	1,585	8	364	1,213	8	508
August	1,663	5	354	1,304	6	481
September	1,937	13	386	1,538	13	542
October	2,515	9	399	2,107	10	551
November	2,689	9	371	2,309	12	510
December	2,650	5	336	2,309	5	443
<b>Total</b>	<b>24,783</b>	<b>82</b>	<b>4,197</b>	<b>20,504</b>	<b>88</b>	<b>5,730</b>

## 2016 - Driver Statistics

Age Group	Statewide			Driver Rates	
	2016 Population	Licensed Drivers	Drivers in Crashes	Per 10k Population	Per 10k Licensed
0 - 15	1,923,244	49,678	57	0.3	11.5
16 - 20	672,666	471,135	4,834	71.9	102.6
21 - 24	570,792	470,489	4,407	77.2	93.7
25 - 64	5,149,843	4,748,323	23,971	46.5	50.5
65 +	1,611,755	1,437,067	3,940	24.4	27.4
Unknown	0	0	2,841	--	--
<b>Total</b>	<b>9,928,300</b>	<b>7,176,692</b>	<b>40,050</b>	<b>40.3</b>	<b>55.8</b>

## 2016 - Vehicles in Crashes

Vehicle Type	Motor Vehicles		Fatal Crashes		Injury Crashes	PDO Crashes
	Number of Vehicles	% of Total	Number	% of Total	Number	Number
Passenger car, SUV, van	31,808	79.4	84	61.3	5,844	25,880
Motor home	589	1.5	0	0.0	118	471
Pickup truck	4,817	12.0	15	10.9	838	3,964
Small truck under 10,000 lbs. GVWR	417	1.0	3	2.2	75	339
Motorcycle	287	0.7	21	15.3	206	60
Moped / goped	59	0.1	0	0.0	50	9
Go-cart / golf cart	6	0.0	0	0.0	2	4
Snowmobile	2	0.0	0	0.0	1	1
Off-Road Vehicle - ORV / All-Terrain Vehicle - ATV	11	0.0	2	1.5	9	0
Other	301	0.8	3	2.2	59	239
Truck/bus over 10,000 lbs.	984	2.5	9	6.6	173	802
Unknown	769	1.9	0	0.0	61	708
<b>Total</b>	<b>40,050</b>	<b>100.0</b>	<b>137</b>	<b>100.0</b>	<b>7,436</b>	<b>32,477</b>

# Traffic Safety Network Capital Area (continued)

## 5-Year Trend - Crashes by Month

Month	2012		2013		2014		2015		2016	
	Total Crashes	Fatal Crashes	Total Crashes	Fatal Crashes	Total Crashes	Fatal Crashes	Total Crashes	Fatal Crashes	Total Crashes	Fatal Crashes
January	2,389	5	2,173	5	3,124	4	2,582	1	2,362	1
February	1,959	2	2,044	2	2,216	3	2,095	3	2,199	3
March	1,499	6	1,675	4	1,957	3	1,654	5	1,922	3
April	1,288	4	1,547	2	1,529	5	1,383	2	1,591	8
May	1,621	9	1,709	2	1,623	6	1,713	5	1,879	8
June	1,703	10	1,635	6	1,595	11	1,690	12	1,791	10
July	1,343	7	1,506	5	1,438	4	1,683	6	1,585	8
August	1,398	8	1,476	15	1,387	4	1,536	7	1,663	5
September	1,558	8	1,716	4	1,662	12	1,843	5	1,937	13
October	2,279	8	2,306	8	2,469	4	2,510	8	2,515	9
November	2,450	2	2,674	9	2,844	6	2,904	0	2,689	9
December	2,239	9	2,560	2	2,022	6	2,131	4	2,650	5
<b>Total</b>	<b>21,726</b>	<b>78</b>	<b>23,021</b>	<b>64</b>	<b>23,866</b>	<b>68</b>	<b>23,724</b>	<b>58</b>	<b>24,783</b>	<b>82</b>

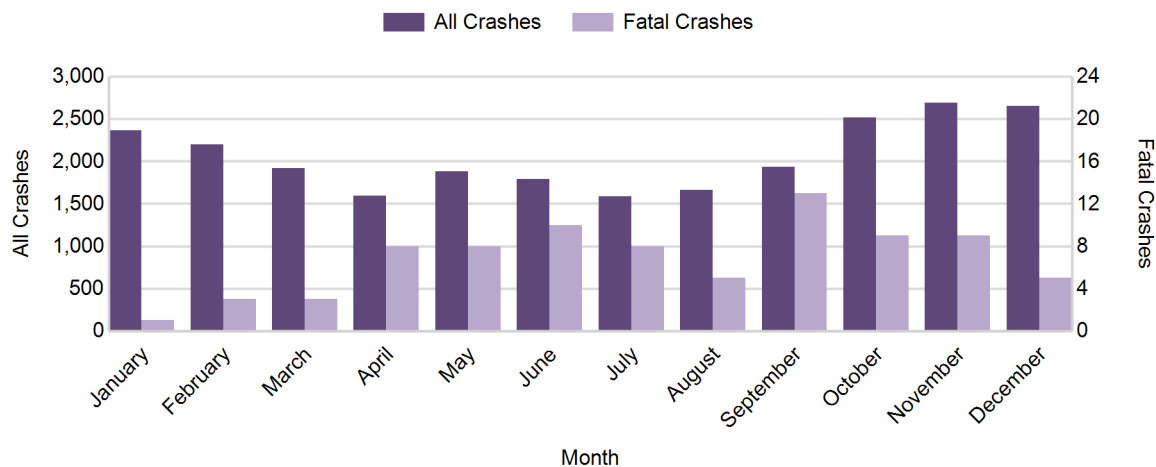
Note: † Indicates that the highest number of total crashes reported in the 5-year period occurred in the same month

## 5-Year Trend - Crashes by Day of Week

Day	2012		2013		2014		2015		2016	
	Total Crashes	Fatal Crashes	Total Crashes	Fatal Crashes	Total Crashes	Fatal Crashes	Total Crashes	Fatal Crashes	Total Crashes	Fatal Crashes
Monday	3,090	8	3,386	7	3,238	8	3,446	8	3,363	14
Tuesday	3,057	12	3,469	7	3,565	13	3,588	7	3,779	12
Wednesday	3,046	6	3,509	12	3,681	7	3,556	9	3,930	9
Thursday	3,207	13	3,433	3	4,118	9	3,417	8	4,014	11
Friday	3,949	9	3,690	14	3,969	11	3,886	6	4,236	11
Saturday	2,937	18	3,063	10	2,901	10	3,268	8	2,988	14
Sunday	2,440	12	2,471	11	2,394	10	2,563	12	2,473	11
<b>Total</b>	<b>21,726</b>	<b>78</b>	<b>23,021</b>	<b>64</b>	<b>23,866</b>	<b>68</b>	<b>23,724</b>	<b>58</b>	<b>24,783</b>	<b>82</b>

Note: † Indicates that the highest number of total crashes reported in the 5-year period occurred on the same day of the week

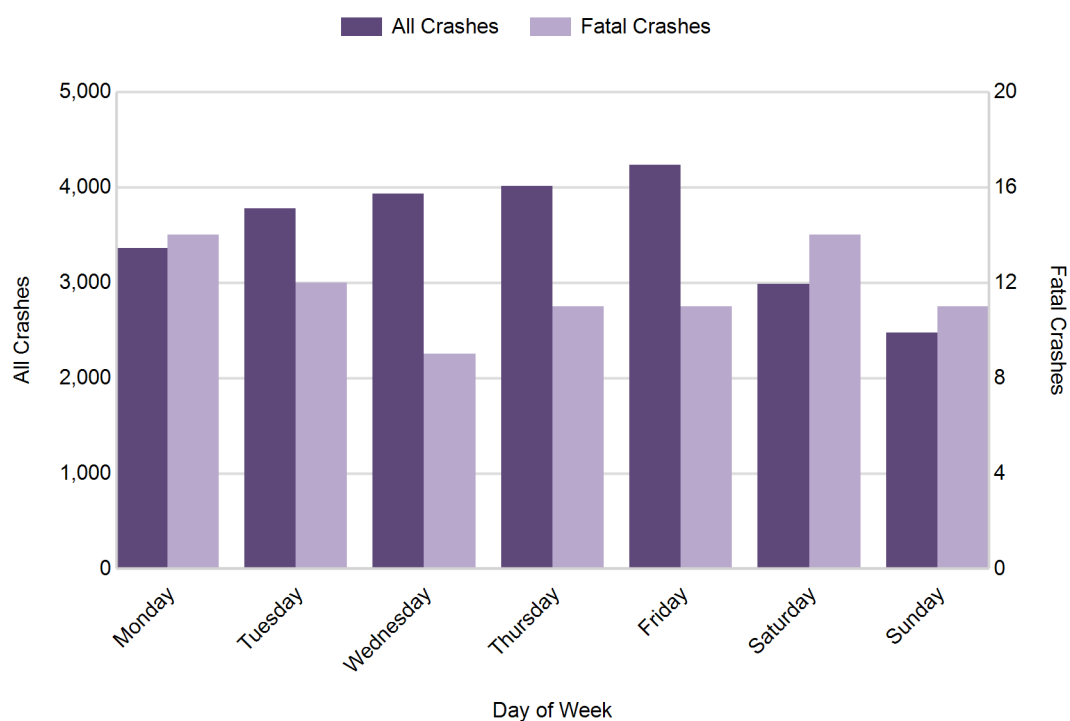
## 2016 Crashes by Month



2016 - Crashes by Day of Week

Day	All Crashes		Fatal Crashes		Injury Crashes			PDO Crashes
	Number	% of Total	Number	% of Fatal	A	B	C	Number
Monday	3,363	13.6	14	17.1	43	127	370	2,809
Tuesday	3,779	15.2	12	14.6	56	159	424	3,128
Wednesday	3,930	15.9	9	11.0	49	151	459	3,262
Thursday	4,014	16.2	11	13.4	64	146	456	3,337
Friday	4,236	17.1	11	13.4	75	172	468	3,510
Saturday	2,988	12.1	14	17.1	47	159	321	2,447
Sunday	2,473	10.0	11	13.4	51	153	247	2,011
<b>Total</b>	<b>24,783</b>	<b>100.0</b>	<b>82</b>	<b>100.0</b>	<b>385</b>	<b>1,067</b>	<b>2,745</b>	<b>20,504</b>

2016 Day of Week and Severity

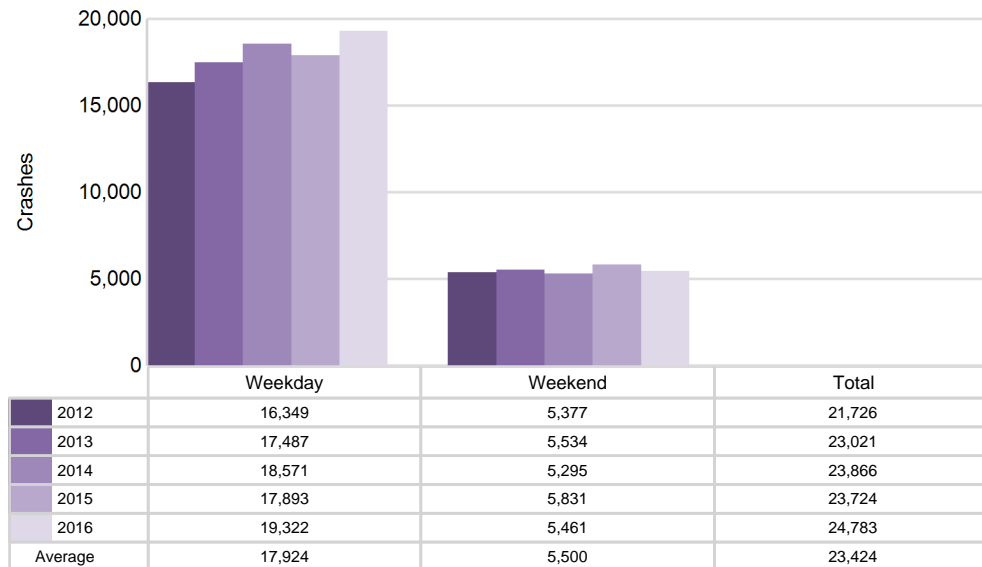


## Traffic Safety Network Capital Area (continued)

### 5-Year Trend - Crashes by Weekday and Weekend

Portion of Week	2012		2013		2014		2015		2016	
	Total Crashes	Fatal Crashes	Total Crashes	Fatal Crashes	Total Crashes	Fatal Crashes	Total Crashes	Fatal Crashes	Total Crashes	Fatal Crashes
Weekday	16,349	48	17,487	43	18,571	48	17,893	38	19,322	57
Weekend	5,377	30	5,534	21	5,295	20	5,831	20	5,461	25
<b>Total</b>	<b>21,726</b>	<b>78</b>	<b>23,021</b>	<b>64</b>	<b>23,866</b>	<b>68</b>	<b>23,724</b>	<b>58</b>	<b>24,783</b>	<b>82</b>

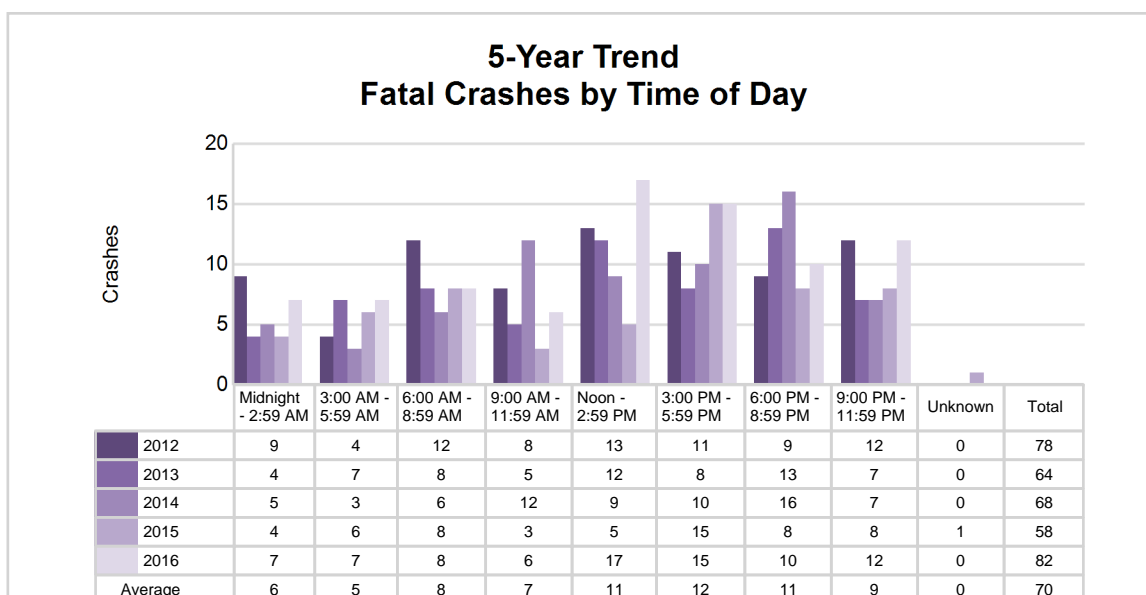
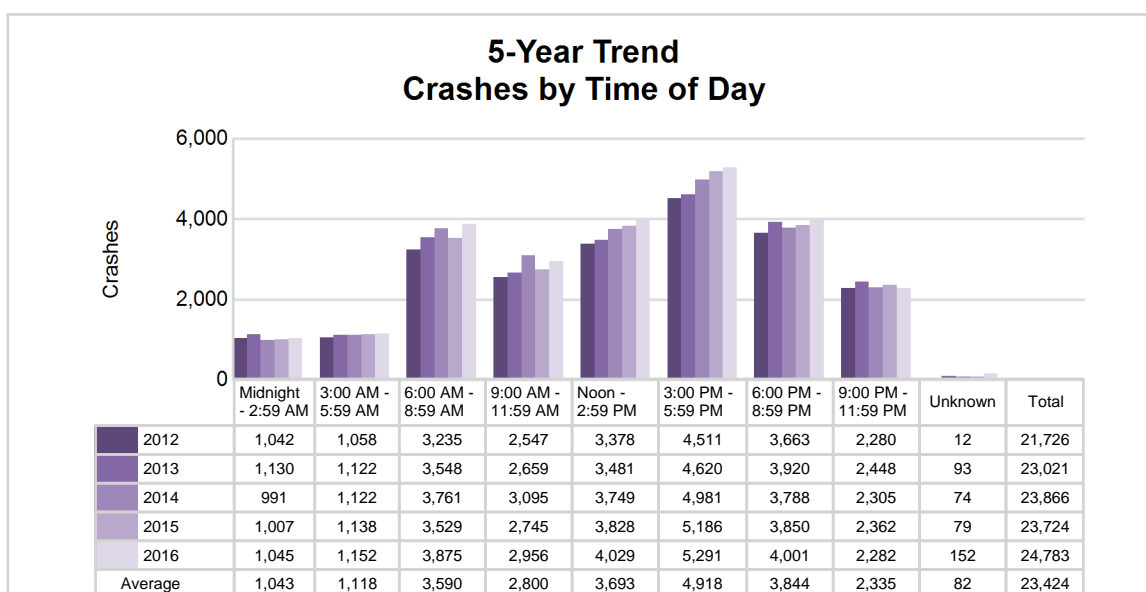
### 5-Year Crash Trends by Weekday (Monday - Friday) and Weekend (Saturday & Sunday)



## 5-Year Trend - Crashes by Time of Day

Time of Day	2012		2013		2014		2015		2016	
	Total Crashes	Fatal Crashes	Total Crashes	Fatal Crashes	Total Crashes	Fatal Crashes	Total Crashes	Fatal Crashes	Total Crashes	Fatal Crashes
Midnight - 2:59 AM	1,042	9	1,130	4	991	5	1,007	4	1,045	7
3:00 AM - 5:59 AM	1,058	4	1,122	7	1,122	3	1,138	6	1,152	7
6:00 AM - 8:59 AM	3,235	12	3,548	8	3,761	6	3,529	8	3,875	8
9:00 AM - 11:59 AM	2,547	8	2,659	5	3,095	12	2,745	3	2,956	6
Noon - 2:59 PM	3,378	13	3,481	12	3,749	9	3,828	5	4,029	17
3:00 PM - 5:59 PM	4,511 †	11	4,620 †	8	4,981 †	10	5,186 †	15	5,291 †	15
6:00 PM - 8:59 PM	3,663	9	3,920	13	3,788	16	3,850	8	4,001	10
9:00 PM - 11:59 PM	2,280	12	2,448	7	2,305	7	2,362	8	2,282	12
Unknown	12	0	93	0	74	0	79	1	152	0
<b>Total</b>	<b>21,726</b>	<b>78</b>	<b>23,021</b>	<b>64</b>	<b>23,866</b>	<b>68</b>	<b>23,724</b>	<b>58</b>	<b>24,783</b>	<b>82</b>

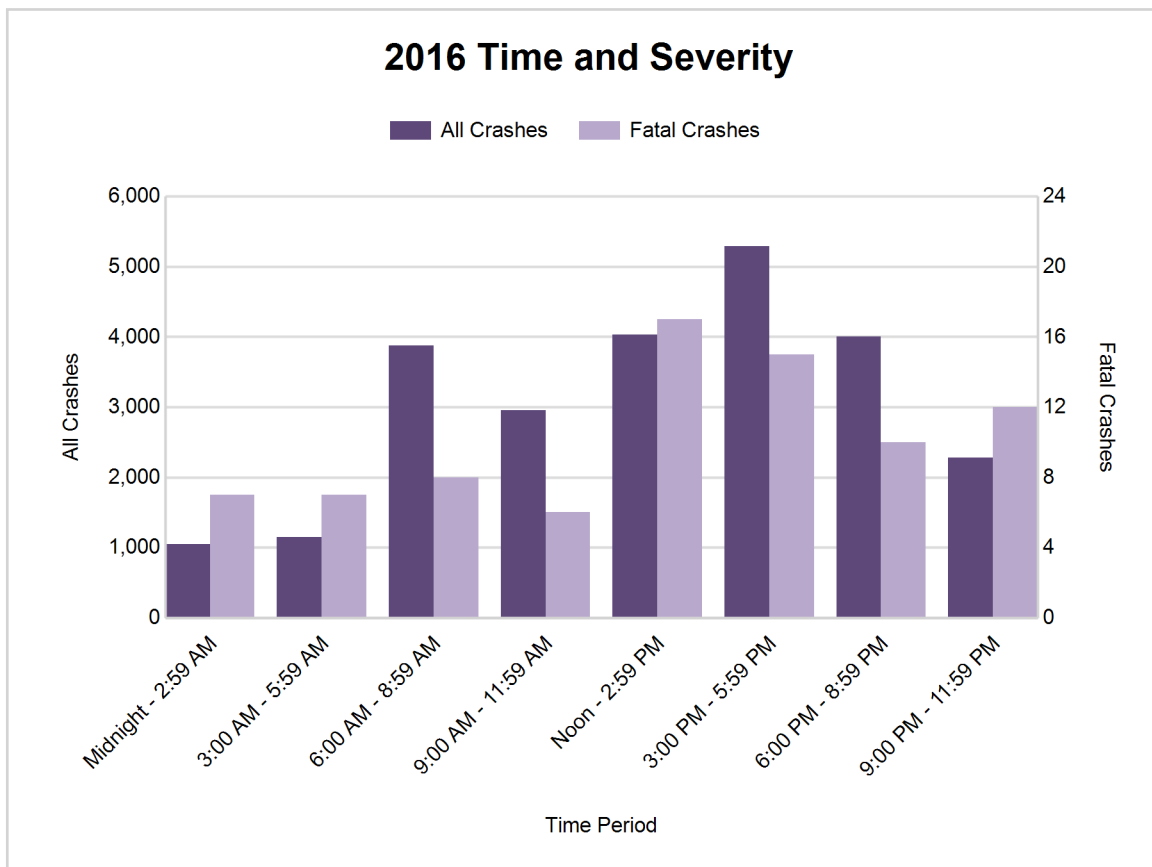
Note: † Indicates that the highest number of total crashes reported in the 5-year period occurred in the same time period



# Traffic Safety Network Capital Area (continued)

## 2016 - Time and Severity

Time of Day	All Crashes		Fatal Crashes		Injury Crashes			PDO Crashes
	Number	% of Total	Number	% of Fatal	A	B	C	Number
Midnight - 2:59 AM	1,045	4.2	7	8.5	19	69	81	869
3:00 AM - 5:59 AM	1,152	4.6	7	8.5	20	56	77	992
6:00 AM - 8:59 AM	3,875	15.6	8	9.8	46	137	347	3,337
9:00 AM - 11:59 AM	2,956	11.9	6	7.3	39	130	380	2,401
Noon - 2:59 PM	4,029	16.3	17	20.7	74	187	551	3,200
3:00 PM - 5:59 PM	5,291	21.3	15	18.3	90	246	718	4,222
6:00 PM - 8:59 PM	4,001	16.1	10	12.2	60	152	377	3,402
9:00 PM - 11:59 PM	2,282	9.2	12	14.6	36	85	189	1,960
Unknown	152	0.6	0	0.0	1	5	25	121
<b>Total</b>	<b>24,783</b>	<b>100.0</b>	<b>82</b>	<b>100.0</b>	<b>385</b>	<b>1,067</b>	<b>2,745</b>	<b>20,504</b>





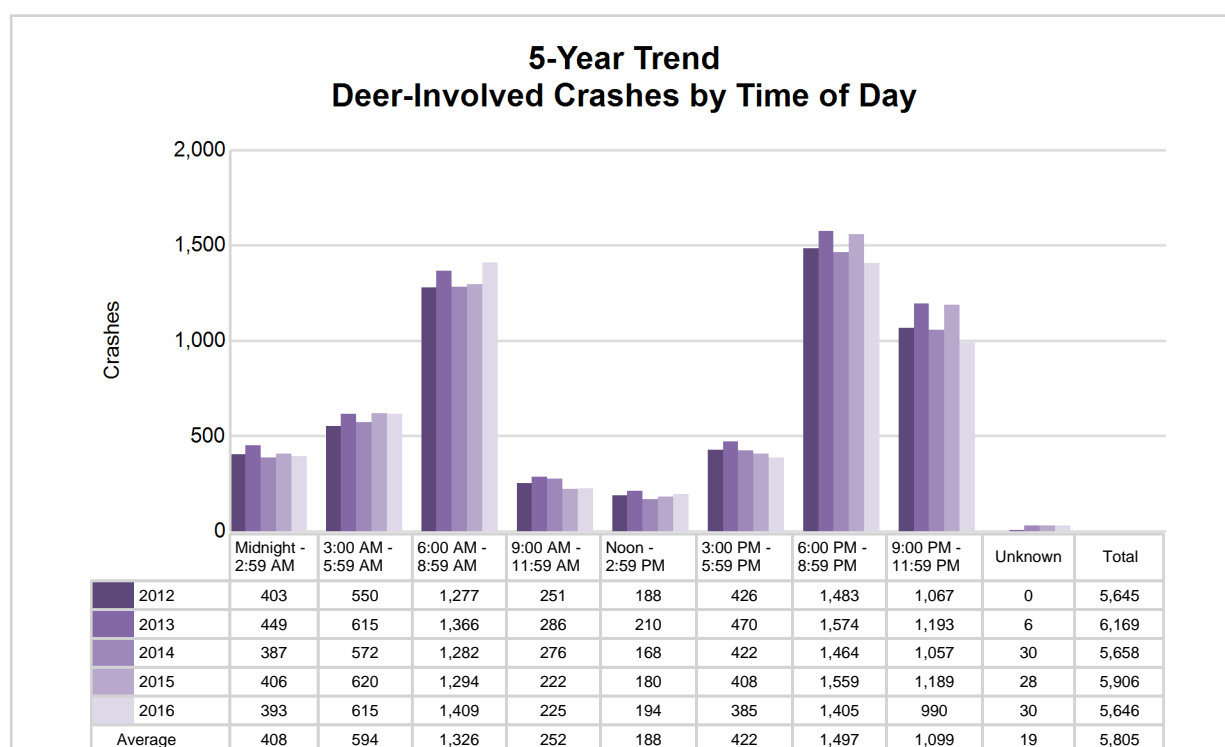
# Traffic Safety Network Capital Area (continued)

7

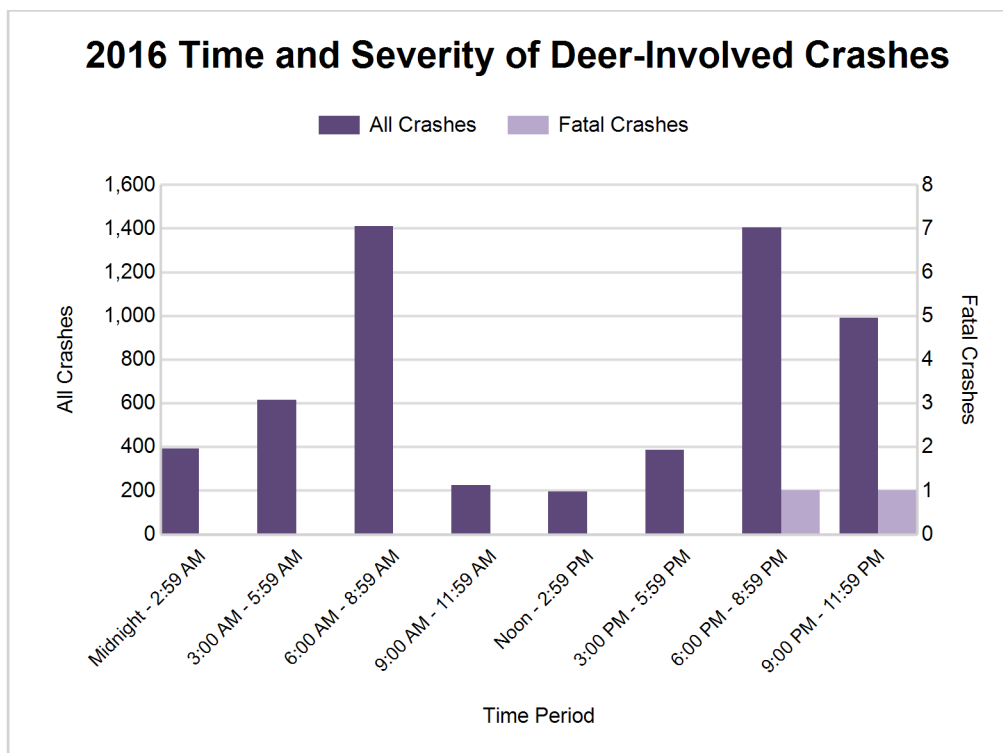
## 5-Year Trend - Deer-Involved Crashes by Time of Day

Time of Day	2012		2013		2014		2015		2016	
	Total Crashes	Fatal Crashes	Total Crashes	Fatal Crashes	Total Crashes	Fatal Crashes	Total Crashes	Fatal Crashes	Total Crashes	Fatal Crashes
Midnight - 2:59 AM	403	0	449	0	387	0	406	1	393	0
3:00 AM - 5:59 AM	550	0	615	0	572	0	620	1	615	0
6:00 AM - 8:59 AM	1,277	0	1,366	0	1,282	0	1,294	0	1,409	0
9:00 AM - 11:59 AM	251	0	286	0	276	0	222	0	225	0
Noon - 2:59 PM	188	0	210	0	168	1	180	0	194	0
3:00 PM - 5:59 PM	426	0	470	0	422	0	408	0	385	0
6:00 PM - 8:59 PM	1,483	0	1,574	0	1,464	1	1,559	1	1,405	1
9:00 PM - 11:59 PM	1,067	0	1,193	0	1,057	0	1,189	0	990	1
Unknown	0	0	6	0	30	0	28	0	30	0
<b>Total</b>	<b>5,645</b>	<b>0</b>	<b>6,169</b>	<b>0</b>	<b>5,658</b>	<b>2</b>	<b>5,906</b>	<b>3</b>	<b>5,646</b>	<b>2</b>

Note: † Indicates that the highest number of total crashes reported in the 5-year period occurred in the same time period



## Traffic Safety Network Capital Area (continued)



### 2016 - Reported Motor Vehicle Crashes by County

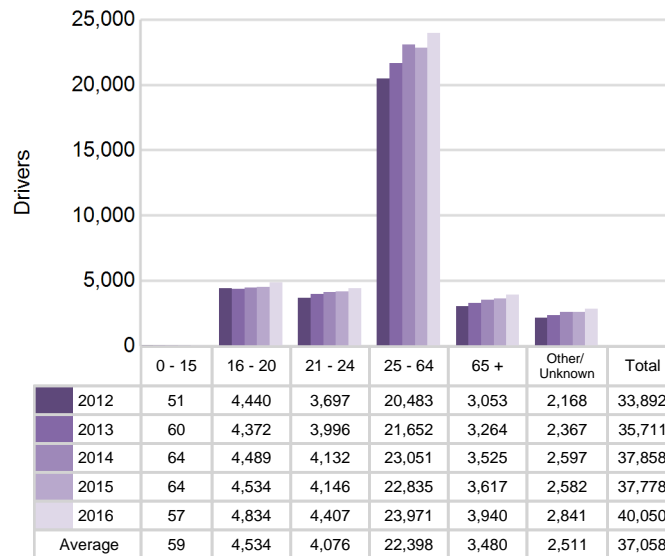
County	Crashes											Persons	
	Total	Fatal	Injury	Property Damage	Inter-state	US Route	State Route	Local Street	Alcohol-Involved	Drug-Involved	Deer-Involved	Fatalities	Injuries
Clinton	2,158	12	294	1,852	359	304	238	1,256	54	16	918	13	426
Eaton	3,368	10	458	2,900	639	0	1,102	1,627	85	23	998	10	625
Hillsdale	1,634	5	196	1,433	0	233	370	1,029	51	14	827	5	258
Ingham	9,947	25	1,926	7,996	1,948	481	2,198	5,317	303	80	1,096	26	2,653
Jackson	5,263	16	846	4,401	942	330	853	3,120	188	51	1,254	18	1,120
Lenawee	2,413	14	477	1,922	0	522	572	1,317	75	28	553	16	648
<b>Total</b>	<b>24,783</b>	<b>82</b>	<b>4,197</b>	<b>20,504</b>	<b>3,888</b>	<b>1,870</b>	<b>5,333</b>	<b>13,666</b>	<b>756</b>	<b>212</b>	<b>5,646</b>	<b>88</b>	<b>5,730</b>

# Traffic Safety Network Capital Area (continued)

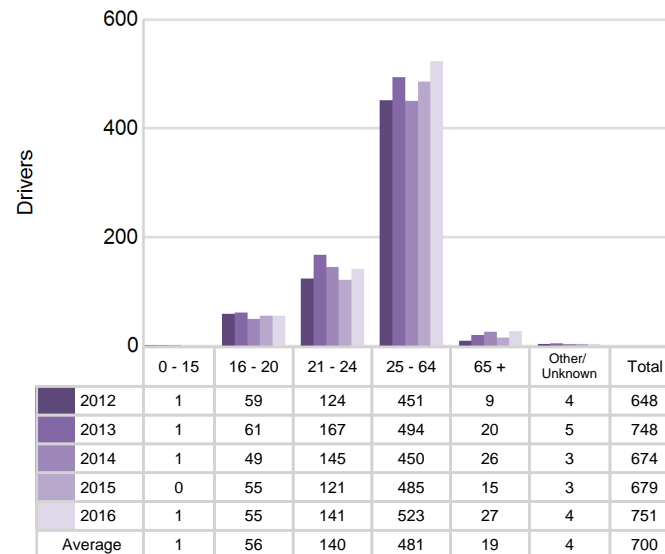
## 5-Year Trend - Drivers in Crashes Coded Drinking by Driver Age

Driver Age	2012		2013		2014		2015		2016	
	Total Drivers in Crashes	Total Drivers Coded Drinking	Total Drivers in Crashes	Total Drivers Coded Drinking	Total Drivers in Crashes	Total Drivers Coded Drinking	Total Drivers in Crashes	Total Drivers Coded Drinking	Total Drivers in Crashes	Total Drivers Coded Drinking
0 - 15	51	1	60	1	64	1	64	0	57	1
16 - 20	4,440	59	4,372	61	4,489	49	4,534	55	4,834	55
21 - 24	3,697	124	3,996	167	4,132	145	4,146	121	4,407	141
25 - 64	20,483	451	21,652	494	23,051	450	22,835	485	23,971	523
65 +	3,053	9	3,264	20	3,525	26	3,617	15	3,940	27
Unknown	2,168	4	2,367	5	2,597	3	2,582	3	2,841	4
<b>Total</b>	<b>33,892</b>	<b>648</b>	<b>35,711</b>	<b>748</b>	<b>37,858</b>	<b>674</b>	<b>37,778</b>	<b>679</b>	<b>40,050</b>	<b>751</b>

**5-Year Trend  
Total Drivers in Crashes by Age**



**5-Year Trend  
Total Drivers Coded Drinking by Age**



# Traffic Safety Network Capital Area (continued)

## 2016 - Bodily Alcohol Concentration (BAC) Results Among All Vehicle Drivers in Alcohol-Involved Crashes by Age

Age Group	Drivers				BAC Result Range for Drivers Coded Drinking				
	Total Drivers in Alcohol-Involved Crashes	Total Drivers Tested in all Crashes	Total Drivers Coded Drinking, Tested	Total Drivers Coded Drinking	BAC = 0.00	BAC 0.01 g/dL to 0.07 g/dL	BAC 0.08 g/dL to 0.16 g/dL	BAC 0.17 g/dL and Above	BAC Not Reported
0 - 15	1	1	1	1	0	0	0	0	1
16 - 20	76	85	49	55	1	10	16	6	22
21 - 24	173	156	125	141	1	13	46	41	40
25 - 64	698	592	426	523	6	45	125	118	229
65 +	49	41	24	27	1	6	8	2	10
Unknown	89	5	2	4	0	0	1	1	2
<b>Total</b>	<b>1,086</b>	<b>880</b>	<b>627</b>	<b>751</b>	<b>9</b>	<b>74</b>	<b>196</b>	<b>168</b>	<b>304</b>

Notes: BAC measured in grams (g) per deciliter (dL).

BAC may not be reported if drivers are not tested or if the results are not available immediately (as in the case of a blood test).

A driver may be coded by the officer as drinking even though no test is administered.

## Alcohol-Involved Crashes

In 2016, there were 1,086 drivers in alcohol-involved crashes; 751 (69.2%) of those drivers were coded as had-been-drinking by the officer on the crash form.

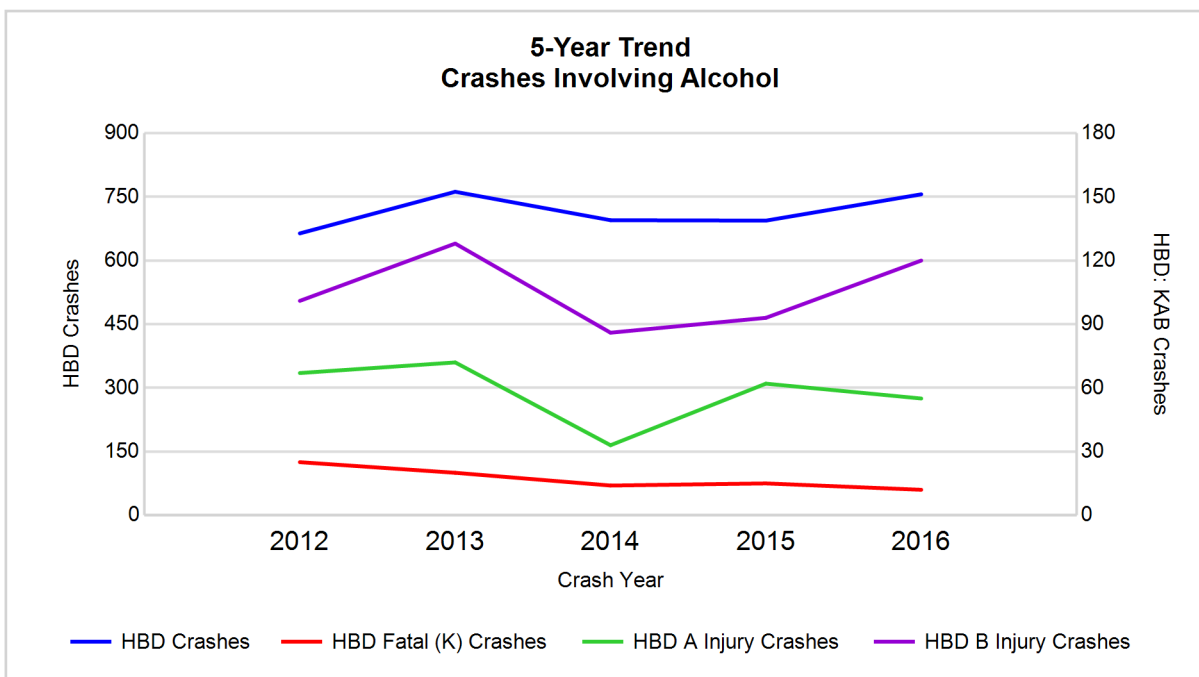
- 364 (48.5%) of the 751 drivers had a blood alcohol concentration (BAC) of 0.08 g/dL (grams per deciliter) or greater, and 168 (46.2%) of the 364 drivers had a BAC at or above 0.17 g/dL.
- 627 (83.5%) of the 751 drivers were coded as had-been-drinking and were tested for alcohol consumption.

## 5-Year Trend - Crashes Involving Alcohol

Year	All Crashes	HBD Crashes	% HBD	Fatal Crashes	HBD Fatal Crashes	% HBD	A Injury Crashes	HBD A Injury Crashes	% HBD	B Injury Crashes	HBD B Injury Crashes	% HBD
2012	21,726	664	3.1	78	25	32.1	422	67	15.9	956	101	10.6
2013	23,021	762	3.3	64	20	31.3	396	72	18.2	1,040	128	12.3
2014	23,866	695	2.9	68	14	20.6	332	33	9.9	954	86	9.0
2015	23,724	694	2.9	58	15	25.9	350	62	17.7	970	93	9.6
2016	24,783**	756	3.1	82**	12*	14.6*	385	55	14.3	1,067**	120	11.2

Note: \* Indicates that the most recent year is the lowest number or percentage reported in the 5-year period in that column

\*\* Indicates that the most recent year is the highest number or percentage reported in the 5-year period in that column



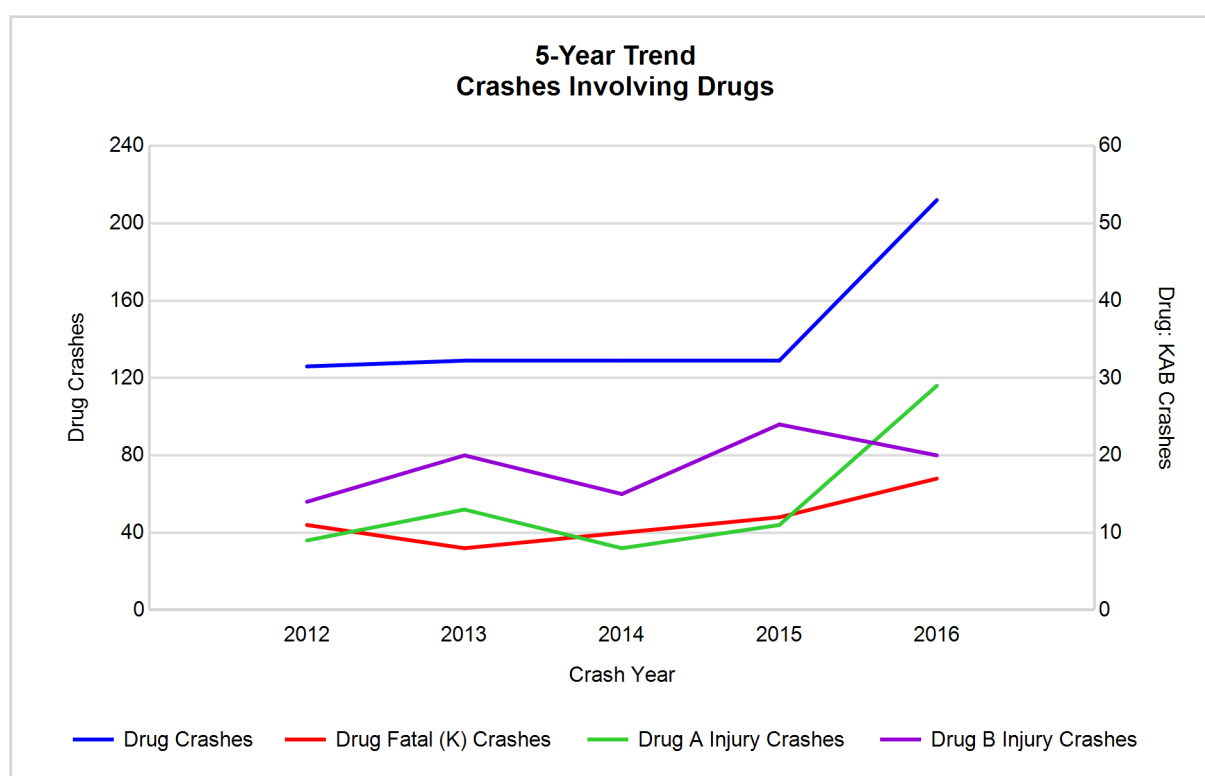
Note: Had-Been-Drinking (HBD)

## 5-Year Trend - Crashes Involving Drugs

Year	All Crashes	Drug Crashes	% Drug	Fatal Crashes	Drug Fatal Crashes	% Drug	A Injury Crashes	Drug A Injury Crashes	% Drug	B Injury Crashes	Drug B Injury Crashes	% Drug
2012	21,726	126	0.6	78	11	14.1	422	9	2.1	956	14	1.5
2013	23,021	129	0.6	64	8	12.5	396	13	3.3	1,040	20	1.9
2014	23,866	129	0.5	68	10	14.7	332	8	2.4	954	15	1.6
2015	23,724	129	0.5	58	12	20.7	350	11	3.1	970	24	2.5
2016	24,783**	212**	0.9**	82**	17**	20.7	385	29**	7.5**	1,067**	20	1.9

Note: \* Indicates that the most recent year is the lowest number or percentage reported in the 5-year period in that column

\*\* Indicates that the most recent year is the highest number or percentage reported in the 5-year period in that column



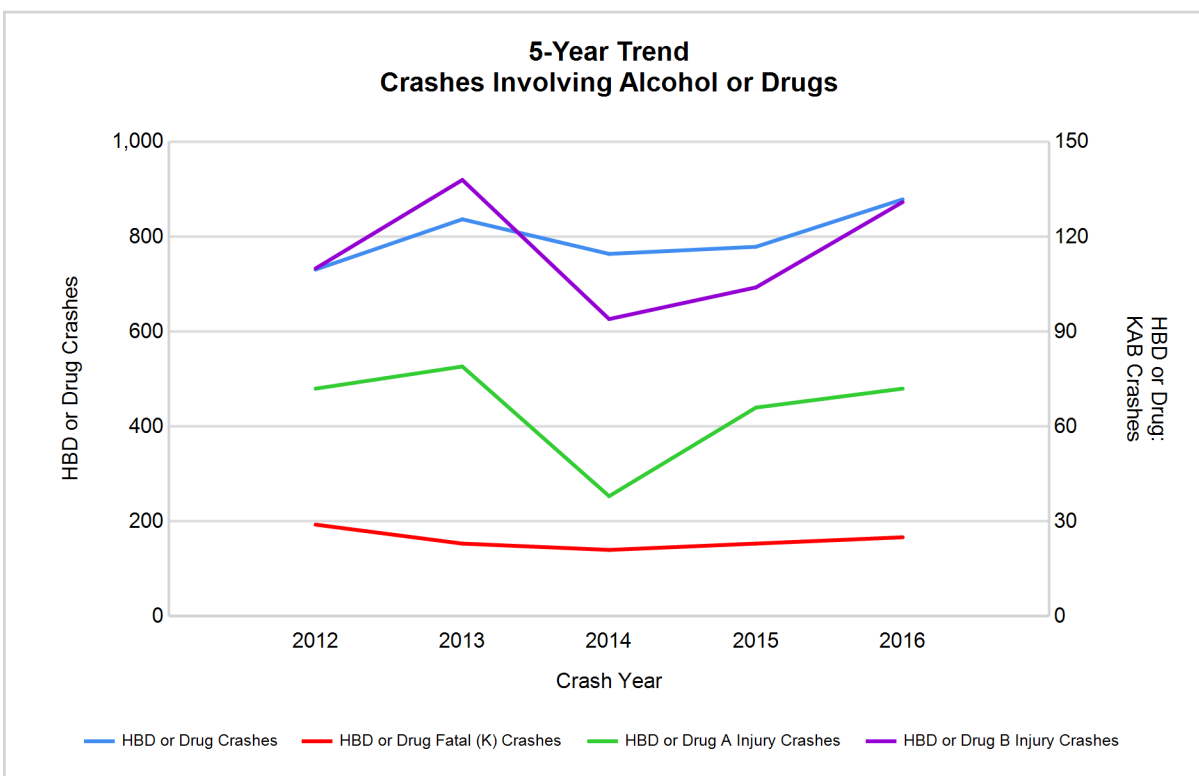
# Traffic Safety Network Capital Area (continued)

## 5-Year Trend - Crashes Involving Alcohol or Drugs

Year	All Crashes	HBD or Drug Crashes	% HBD or Drug	Fatal Crashes	HBD or Drug Fatal Crashes	% HBD or Drug	A Injury Crashes	HBD or Drug A Injury Crashes	% HBD or Drug	B Injury Crashes	HBD or Drug B Injury Crashes	% HBD or Drug
2012	21,726	731	3.4	78	29	37.2	422	72	17.1	956	110	11.5
2013	23,021	837	3.6	64	23	35.9	396	79	19.9	1,040	138	13.3
2014	23,866	764	3.2	68	21	30.9	332	38	11.4	954	94	9.9
2015	23,724	779	3.3	58	23	39.7	350	66	18.9	970	104	10.7
2016	24,783**	879**	3.5	82**	25	30.5*	385	72	18.7	1,067**	131	12.3

Note: \* Indicates that the most recent year is the lowest number or percentage reported in the 5-year period in that column

\*\* Indicates that the most recent year is the highest number or percentage reported in the 5-year period in that column



Note: Had-Been-Drinking (HBD)

# Traffic Safety Network Capital Area (continued)

13

## 2016 - Restraints Worn Among Vehicle Drivers and Injured Passengers by Vehicle Type

Vehicle Type	Total Occupants			Fatalities			A - Suspected Serious			B - Suspected Minor			C - Possible Injury			No Injury		
	Total	Used Restraint	%	Total	Used Restraint	%	Total	Used Restraint	%	Total	Used Restraint	%	Total	Used Restraint	%	Total	Used Restraint	%
Passenger car, SUV, van	32,950	30,272	91.9	43	26	60.5	289	248	85.8	951	865	91.0	3,196	3,068	96.0	26,658	25,868	97.0
Motor home	607	567	93.4	0	0	0.0	1	1	100.0	19	19	100.0	56	51	91.1	506	496	98.0
Pickup truck	4,922	4,458	90.6	8	3	37.5	49	32	65.3	121	114	94.2	318	294	92.5	4,153	4,005	96.4
Small truck under 10,000 lbs. GVWR	428	393	91.8	3	2	66.7	4	4	100.0	10	6	60.0	34	29	85.3	356	350	98.3
Motorcycle	307	177	57.7	21	9	42.9	66	36	54.5	100	71	71.0	53	27	50.9	57	33	57.9
Moped / goped	64	12	18.8	0	0	0.0	10	4	40.0	23	5	21.7	18	2	11.1	10	1	10.0
Go-cart / golf cart	7	2	28.6	0	0	0.0	0	0	0.0	1	0	0.0	0	0	0.0	4	2	50.0
Snowmobile	2	2	100.0	0	0	0.0	1	1	100.0	0	0	0.0	0	0	0.0	1	1	100.0
Off-Road Vehicle - ORV / All-Terrain Vehicle - ATV	11	4	36.4	1	1	100.0	5	1	20.0	3	1	33.3	2	1	50.0	0	0	0.0
Other	308	214	69.5	0	0	0.0	3	0	0.0	8	5	62.5	24	14	58.3	213	178	83.6
Truck/bus over 10,000 lbs.	1,015	907	89.4	2	1	50.0	3	1	33.3	15	8	53.3	59	31	52.5	897	859	95.8
Unknown	769	14	1.8	0	0	0.0	0	0	0.0	0	0	0.0	3	2	66.7	29	11	37.9
<b>Total</b>	<b>41,390</b>	<b>37,022</b>	<b>89.4</b>	<b>78</b>	<b>42</b>	<b>53.8</b>	<b>431</b>	<b>328</b>	<b>76.1</b>	<b>1,251</b>	<b>1,094</b>	<b>87.5</b>	<b>3,763</b>	<b>3,519</b>	<b>93.5</b>	<b>32,884</b>	<b>31,804</b>	<b>96.7</b>

Note: Restraint Use includes shoulder belt only used, lap belt only used, both lap and shoulder belts used, child restraint used, restraint failure, and helmet worn.

## 2016 - Restraints Worn Among Vehicle Drivers and Injured Passengers by Age

Age Group	Total Occupants			Fatalities			A - Suspected Serious			B - Suspected Minor			C - Possible Injury			No Injury		
	Total	Used Restraint	%	Total	Used Restraint	%	Total	Used Restraint	%	Total	Used Restraint	%	Total	Used Restraint	%	Total	Used Restraint	%
0 - 15	446	403	90.4	5	2	40.0	23	19	82.6	69	63	91.3	299	273	91.3	48	44	91.7
16 - 20	5,039	4,829	95.8	6	5	83.3	67	52	77.6	198	172	86.9	493	454	92.1	4,251	4,125	97.0
21 - 24	4,525	4,333	95.8	7	3	42.9	50	37	74.0	166	147	88.6	369	336	91.1	3,891	3,780	97.1
25 - 64	24,469	23,485	96.0	47	23	48.9	245	181	73.9	679	582	85.7	2,190	2,063	94.2	21,089	20,479	97.1
65 +	4,067	3,947	97.0	13	9	69.2	45	39	86.7	139	130	93.5	407	392	96.3	3,435	3,357	97.7
Unknown	2,844	25	0.9	0	0	0.0	1	0	0.0	0	0	0.0	5	1	20.0	170	19	11.2
<b>Total</b>	<b>41,390</b>	<b>37,022</b>	<b>89.4</b>	<b>78</b>	<b>42</b>	<b>53.8</b>	<b>431</b>	<b>328</b>	<b>76.1</b>	<b>1,251</b>	<b>1,094</b>	<b>87.5</b>	<b>3,763</b>	<b>3,519</b>	<b>93.5</b>	<b>32,884</b>	<b>31,804</b>	<b>96.7</b>

Note: Restraint Use includes shoulder belt only used, lap belt only used, both lap and shoulder belts used, child restraint used, restraint failure, and helmet worn.

# Traffic Safety Network Capital Area (continued)

## 5-Year Trend - Restraint Use Among Drivers

Restraint Use	2012			2013			2014			2015			2016		
	Drivers	Fatal Drivers	Injured Drivers	Drivers	Fatal Drivers	Injured Drivers	Drivers	Fatal Drivers	Injured Drivers	Drivers	Fatal Drivers	Injured Drivers	Drivers	Fatal Drivers	Injured Drivers
No belts available	182	1	34	164	0	30	175	0	28	143	0	23	126	0	21
Shoulder belt only used	61	0	10	244	1	21	182	0	17	61	0	7	246	0	34
Lap belt only used	106	0	9	96	0	13	156	0	16	137	2	16	132	0	14
Both lap & shoulder belts used	30,217	26	3,089	31,678	18	3,062	33,598	28	3,185	33,582	19	3,208	35,267	25	3,593
No belts used	276	17	91	259	14	85	285	7	89	304	8	78	256	15	78
Child restraint used	2	0	0	2	0	0	0	0	0	2	0	0	5	0	1
Child restraint not used, unavailable or improper use	3	0	1	1	0	0	1	0	0	1	0	0	0	0	0
Restraint failure	10	0	2	10	0	1	8	0	0	13	0	3	15	0	1
Restraint use unknown	677	7	68	784	8	92	773	5	78	749	3	103	2,295	5	123
Helmet worn	224	8	150	231	5	166	177	3	127	205	5	141	180	9	135
Helmet not worn	111	5	82	94	3	72	103	8	70	127	5	99	145	12	106
Helmet use unknown	22	0	10	24	0	13	21	1	7	25	1	12	25	0	15
Uncoded & errors	2,001	0	8	2,124	0	1	2,379	0	4	2,429	0	2	1,358	0	2
<b>Total</b>	<b>33,892</b>	<b>64</b>	<b>3,554</b>	<b>35,711</b>	<b>49</b>	<b>3,556</b>	<b>37,858</b>	<b>52</b>	<b>3,621</b>	<b>37,778</b>	<b>43</b>	<b>3,692</b>	<b>40,050</b>	<b>66</b>	<b>4,123</b>

## 5-Year Trend - Restraint Use Among Drivers Coded Drinking

Restraint Use	2012			2013			2014			2015			2016		
	Drivers	Fatal Drivers	Injured Drivers	Drivers	Fatal Drivers	Injured Drivers	Drivers	Fatal Drivers	Injured Drivers	Drivers	Fatal Drivers	Injured Drivers	Drivers	Fatal Drivers	Injured Drivers
No belts available	6	0	2	7	0	3	5	0	2	5	0	2	3	0	2
Shoulder belt only used	3	0	3	4	0	1	4	0	3	0	0	0	5	0	1
Lap belt only used	3	0	3	2	0	1	5	0	1	3	2	1	2	0	0
Both lap & shoulder belts used	459	5	149	528	4	164	489	6	119	491	3	158	555	3	181
No belts used	40	7	20	48	3	30	35	1	22	33	4	18	33	4	21
Child restraint used	0	0	0	0	0	0	0	0	0	0	0	0	0	0	0
Child restraint not used, unavailable or improper use	1	0	1	0	0	0	1	0	0	0	0	0	0	0	0
Restraint failure	0	0	0	1	0	1	3	0	0	1	0	1	0	0	0
Restraint use unknown	97	2	23	128	1	38	113	3	33	115	0	41	127	0	44
Helmet worn	13	1	11	7	1	4	5	0	3	9	0	8	4	2	2
Helmet not worn	19	4	13	19	3	15	11	1	8	20	1	16	19	2	15
Helmet use unknown	1	0	0	1	0	1	1	0	1	2	1	1	1	0	0
Uncoded & errors	6	0	0	3	0	0	2	0	0	0	0	0	2	0	0
<b>Total</b>	<b>648</b>	<b>19</b>	<b>225</b>	<b>748</b>	<b>12</b>	<b>258</b>	<b>674</b>	<b>11</b>	<b>192</b>	<b>679</b>	<b>11</b>	<b>246</b>	<b>751</b>	<b>11</b>	<b>266</b>

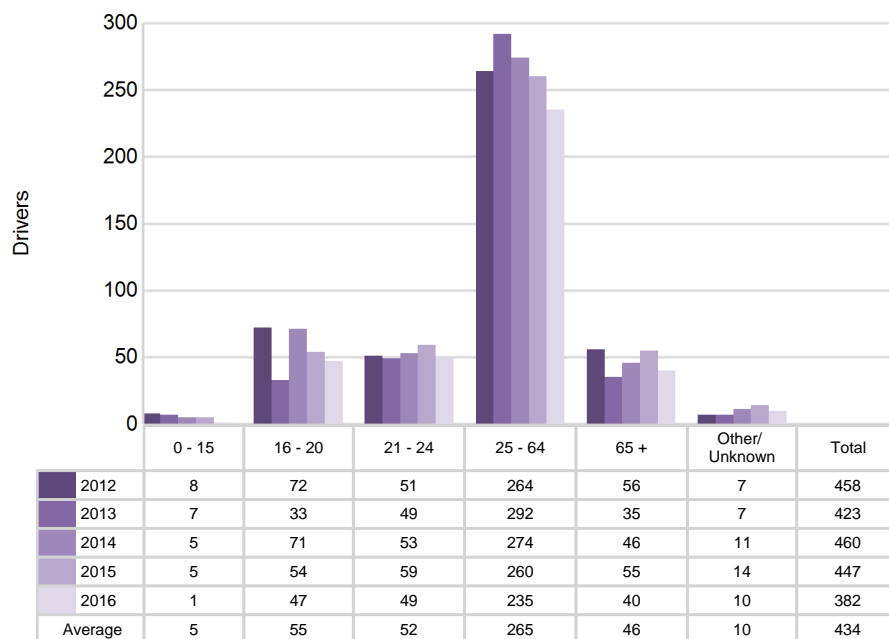


## 5-Year Trend - Seatbelt Not Used Among Drivers by Age

Age Group	2012			2013			2014			2015			2016		
	Drivers	Fatal Drivers	Injured Drivers	Drivers	Fatal Drivers	Injured Drivers	Drivers	Fatal Drivers	Injured Drivers	Drivers	Fatal Drivers	Injured Drivers	Drivers	Fatal Drivers	Injured Drivers
0 - 15	8	0	0	7	0	2	5	0	1	5	0	2	1	0	1
16 - 20	72	1	29	33	2	7	71	1	22	54	0	15	47	1	16
21 - 24	51	2	11	49	0	16	53	1	13	59	0	17	49	3	14
25 - 64	264	12	69	292	9	86	274	4	67	260	7	59	235	7	56
65 +	56	3	16	35	3	4	46	1	14	55	1	8	40	4	12
Unknown	7	0	0	7	0	0	11	0	0	14	0	0	10	0	0
<b>Total</b>	<b>458</b>	<b>18</b>	<b>125</b>	<b>423</b>	<b>14</b>	<b>115</b>	<b>460</b>	<b>7</b>	<b>117</b>	<b>447</b>	<b>8</b>	<b>101</b>	<b>382</b>	<b>15</b>	<b>99</b>

Note: Seatbelt Not Used includes no belts available or no belts used.

## 5-Year Trend Driver Seatbelt Not Used



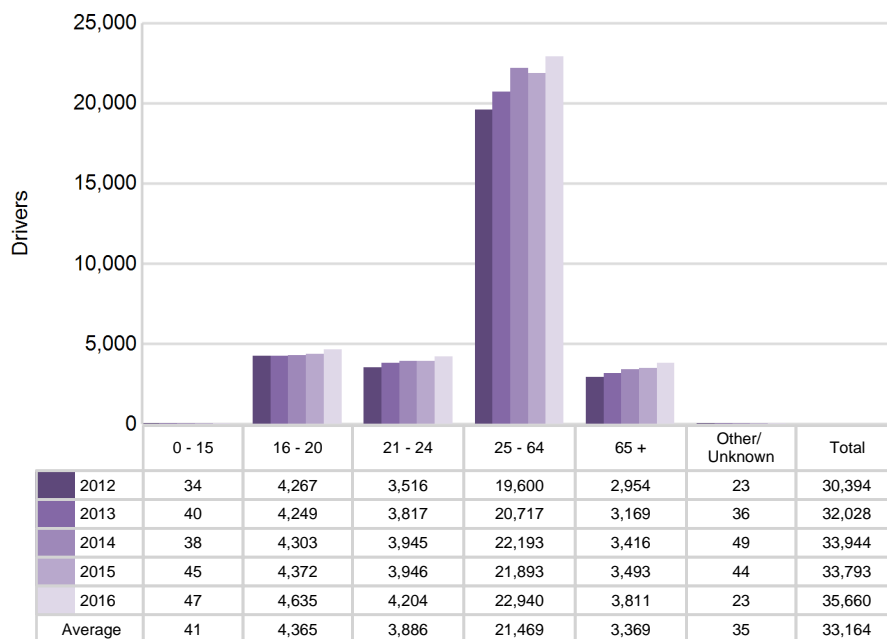
# Traffic Safety Network Capital Area (continued)

## 5-Year Trend - Seatbelt Used Among Drivers by Age

Age Group	2012			2013			2014			2015			2016		
	Drivers	Fatal Drivers	Injured Drivers	Drivers	Fatal Drivers	Injured Drivers	Drivers	Fatal Drivers	Injured Drivers	Drivers	Fatal Drivers	Injured Drivers	Drivers	Fatal Drivers	Injured Drivers
0 - 15	34	0	6	40	0	3	38	0	5	45	0	5	47	0	3
16 - 20	4,267	4	472	4,249	0	448	4,303	3	417	4,372	3	477	4,635	4	492
21 - 24	3,516	2	355	3,817	4	361	3,945	1	400	3,946	4	348	4,204	2	402
25 - 64	19,600	11	1,929	20,717	11	1,923	22,193	16	2,038	21,893	11	2,042	22,940	15	2,312
65 +	2,954	9	348	3,169	4	362	3,416	8	358	3,493	3	362	3,811	4	433
Unknown	23	0	0	36	0	0	49	0	0	44	0	0	23	0	0
<b>Total</b>	<b>30,394</b>	<b>26</b>	<b>3,110</b>	<b>32,028</b>	<b>19</b>	<b>3,097</b>	<b>33,944</b>	<b>28</b>	<b>3,218</b>	<b>33,793</b>	<b>21</b>	<b>3,234</b>	<b>35,660</b>	<b>25</b>	<b>3,642</b>

Note: Seatbelt Used includes shoulder belt only used, lap belt only used, both lap and shoulder belts used, and restraint failure.

## 5-Year Trend Driver Seatbelt Used

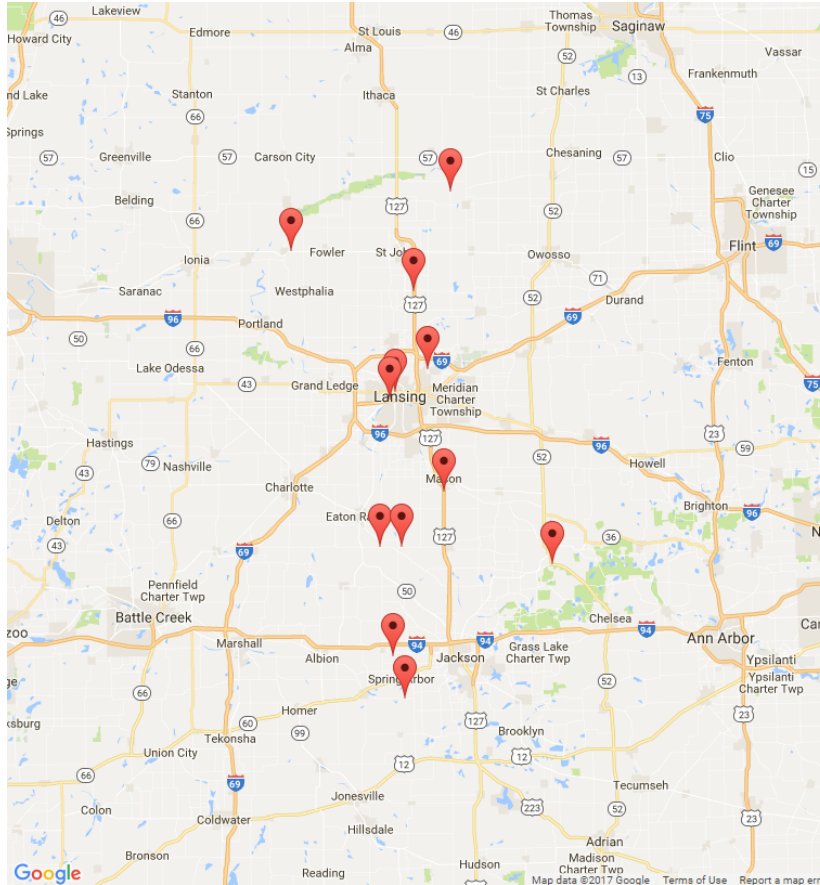


# Traffic Safety Network Capital Area (continued)

## 5-Year Trend - Drivers in Crashes by Hazardous Action

Hazardous Action	2012		2013		2014		2015		2016	
	Total Drivers in Crashes	Drivers in Fatal Crashes	Total Drivers in Crashes	Drivers in Fatal Crashes	Total Drivers in Crashes	Drivers in Fatal Crashes	Total Drivers in Crashes	Drivers in Fatal Crashes	Total Drivers in Crashes	Drivers in Fatal Crashes
None	18,559	38	19,917	42	20,778	44	20,945	42	21,569	59
Speed too fast	2,345	20	2,282	8	2,951	16	2,353	13	2,393	24
Speed too slow	24	0	37	1	35	0	33	0	25	0
Failed to yield	3,097	7	3,189	8	3,445	10	3,365	5	3,650	9
Disregard traffic control	690	8	712	4	748	9	825	3	858	5
Drove wrong way	29	0	40	0	45	2	42	1	36	0
Drove left of center	139	2	144	3	153	6	171	5	164	3
Improper passing	133	0	150	1	166	1	176	0	185	1
Improper lane use	670	0	672	2	775	1	761	1	931	0
Improper turn	330	0	362	0	402	0	403	0	393	1
Improper/no signal	47	0	49	0	50	0	54	0	45	0
Improper backing	657	0	691	0	679	0	652	0	700	0
Unable to stop in assured clear distance	3,982	8	4,205	4	4,366	2	4,477	3	5,090	8
Other	811	6	880	7	967	1	954	2	968	3
Unknown	982	8	1,041	9	1,025	7	1,145	12	1,214	11
Reckless driving	180	4	209	5	173	3	202	0	186	2
Careless/negligent driving	956	10	933	6	958	7	995	8	987	8
Uncoded & errors	261	3	198	1	142	2	225	0	656	3
<b>Total</b>	<b>33,892</b>	<b>114</b>	<b>35,711</b>	<b>101</b>	<b>37,858</b>	<b>111</b>	<b>37,778</b>	<b>95</b>	<b>40,050</b>	<b>137</b>

## Traffic Safety Network Capital Area (continued)



The picture above represents all 2016 alcohol-involved fatal crashes in TSN Capital Area.

In 2016, there were 756 alcohol-involved crashes in TSN Capital Area:

- 12 K - Fatal Crashes
- 55 A - Suspected Serious Injury Crashes
- 120 B - Suspected Minor Injury Crashes
- 148 C - Possible Injury Crashes
- 421 O - Property Damage Only/No Injury Crashes

## Office of Highway Safety Planning

---

Physical Address:  
7150 Harris Drive  
Dimondale, Michigan 48821

Mailing Address:  
P.O. Box 30634  
Lansing, Michigan 48909

Phone: (517) 284-3112  
Fax: (517) 284-3151

Find us on the web:  
[MichiganTrafficCrashFacts.org](http://MichiganTrafficCrashFacts.org)

