



2016

MTCF
Michigan Traffic
Crash Facts

Michigan Traffic Crash Facts

Reporting Criteria

Please pay particular attention to the wording when interpreting the three levels of data gathered for this report.

Crash

The Crash Level analyzes data related to crash events and returns one result per crash.

Examples: Time, weather, and location.

Units

The Units Level analyzes the experience of the units in the crash and returns one result per vehicle, driver, pedestrian, bicyclist, or train.

Examples: Vehicle type, driver condition, and unit events.

People

The People Level analyzes the experience of the people involved in the crash and returns one result per occupant/person/party.

Examples: Age, injury severity, and seat belt or helmet use.

KABCO Injury Indicator:

K = Killed

A = Suspected Serious Injury

B = Suspected Minor Injury

C = Possible Injury

O = No Injury

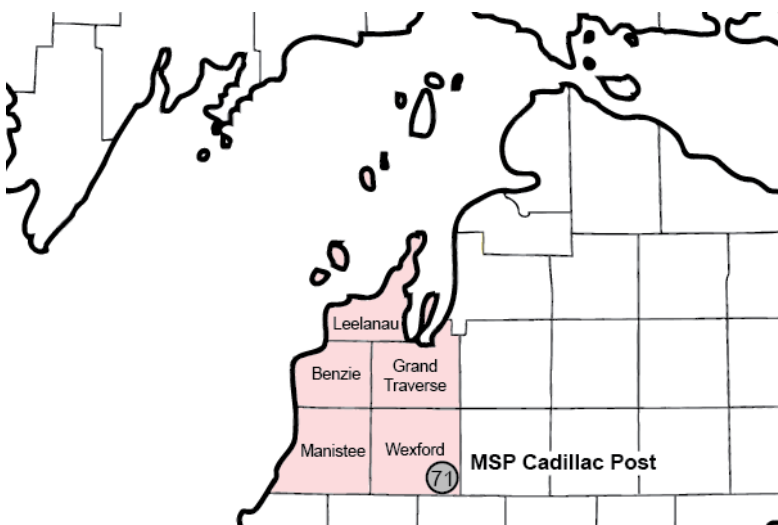
Property Damage Only (PDO)



Michigan State Police (MSP) Post 71 - Cadillac

2016 Traffic Crash Data & 2012-2016 5-Year Trends

Post 71 is comprised of Benzie, Grand Traverse, Leelanau, Manistee, and Wexford counties. Trend tables for this report are based on those counties.



Sources:

The crashes in this report occurred on public roadways in Michigan and resulted in injuries, fatalities, or property damage (with \$1,000 as a reporting threshold). The information was gathered from Michigan Traffic Crash Report Forms (UD-10) submitted by local police departments, sheriff's offices, and the Michigan State Police. Other related information was obtained from the departments of Transportation, State, and Community Health.

This page left intentionally blank

MSP Post 71 - Cadillac

- There were 6,873 crashes in Post 71 during 2016. [Page 1]
- There were 37 fatalities in 31 fatal crashes in 2016 in Post 71. [Page 1]
- A total of 1,333 injuries resulted from 973 injury crashes. [Page 1]
- There were 5,869 property damage only crashes (no fatalities or injuries). [Page 1]
- December had the highest number of crashes (837). [Pages 1-2]
- August had the highest number of fatal crashes (7) and fatalities (11). [Pages 1-2]
- July had the highest number of injury crashes (127) and the highest number of injuries (168). [Page 1]
- December had the highest number of property damage only crashes (738). [Page 1]
- Of all vehicles involved in fatal crashes, three (5.4%) were motorcycles. [Page 1]
- Friday was the day of the week with the highest number of crashes (1,194) and Monday and Thursday had the highest number of fatal crashes (6). [Pages 2-3]
- The 3:00 PM – 5:59 PM time period had the highest number of crashes (1,467). This is true for each year from 2012 to 2016. The 3:00 PM – 5:59 PM and 6:00 PM – 8:59 PM time periods had the highest number of fatal crashes (7). [Pages 5-6]
- During the period from 2012 to 2016, the highest number of deer crashes occurred in 2014 (2,206). There was one fatal crash involving deer in 2016. [Pages 7-8]
- Grand Traverse County (51.2%) had the highest number of crashes in Post 71 in 2016, followed by Wexford County (16.8%), and Manistee County (14.0%). [Page 8]
- Grand Traverse County (40.5%) had the highest number of fatalities in Post 71 in 2016, followed by Wexford County (27.0%), and Leelanau County (18.9%). [Page 8]
- The highest number of drivers in crashes (10,869) occurred during 2014 within the five-year period, and the highest number of drivers coded drinking in crashes (273) occurred during 2016. [Page 9]
- A total of 278 crashes involved alcohol in 2016, which was the highest number of alcohol-involved crashes in the time period. [Page 10]
- Alcohol-involved fatal crashes were the highest in 2013 during the five-year period from 2012 to 2016 at 10. [Page 10]
- A total of 60 crashes and eight fatal crashes involved drugs in 2016, both the highest during the five-year period. There were five suspected serious injury crashes involving drugs in 2016. [Page 11]
- There were 9,602 drivers wearing seatbelts and 104 drivers not wearing seatbelts in crashes in 2016. Of the 104 drivers not wearing seat belts, six (5.8%) were killed and 35 (33.7%) were injured. [Pages 14-16]
- The most common hazardous action coded for drivers in 2016 in all crashes was unable to stop in assured clear distance (1,242), while the most common hazardous action coded for drivers in fatal crashes was speed too fast (7). [Page 17]

Post 71 Experience

In 2016:

There were 10,443 drivers involved in 6,873 motor vehicle crashes in MSP Post 71. Of those crashes, 31 were classified as fatal, resulting in 37 fatalities. An additional 1,333 persons were injured.

Post 71 experienced the highest number of motor vehicle crashes (837) in December, the highest number of fatal crashes (7) and the highest number of persons killed (11) in August.

Michigan driver statistics indicate 5.7 percent of licensed drivers in Post 71 were age 16-20, and 11.3 percent of drivers in crashes were also in that age group.

2016 - Crashes and Injuries by Month

Month	Crashes				Persons	
	Total	Fatal	Injury	Property Damage Only (PDO)	Fatalities	Injuries
January	631	0	57	574	0	81
February	557	2	72	483	2	94
March	455	0	58	397	0	83
April	437	1	72	364	1	97
May	474	3	81	390	3	112
June	509	2	83	424	2	125
July	616	1	127	488	2	168
August	509	7	93	409	11	132
September	536	6	88	442	6	123
October	623	3	78	542	3	94
November	689	3	68	618	4	94
December	837	3	96	738	3	130
Total	6,873	31	973	5,869	37	1,333

2016 - Driver Statistics

Age Group	Statewide			Driver Rates	
	2016 Population	Licensed Drivers	Drivers in Crashes	Per 10k Population	Per 10k Licensed
0 - 15	33,123	939	19	5.7	202.3
16 - 20	10,140	8,514	1,178	1,161.7	1,383.6
21 - 24	8,436	7,906	830	983.9	1,049.8
25 - 64	97,473	93,655	6,448	661.5	688.5
65 +	39,785	37,683	1,444	363.0	383.2
Unknown	0	0	524	--	--
Total	188,957	148,697	10,443	552.7	702.3

2016 - Vehicles in Crashes

Vehicle Type	Motor Vehicles		Fatal Crashes		Injury Crashes	PDO Crashes
	Number of Vehicles	% of Total	Number	% of Total	Number	Number
Passenger car, SUV, van	7,980	76.4	33	58.9	1,227	6,720
Motor home	139	1.3	0	0.0	18	121
Pickup truck	1,748	16.7	9	16.1	249	1,490
Small truck under 10,000 lbs. GVWR	84	0.8	0	0.0	13	71
Motorcycle	76	0.7	3	5.4	58	15
Moped / goped	12	0.1	0	0.0	12	0
Go-cart / golf cart	0	0.0	0	0.0	0	0
Snowmobile	7	0.1	0	0.0	3	4
Off-Road Vehicle - ORV / All-Terrain Vehicle - ATV	6	0.1	1	1.8	5	0
Other	42	0.4	0	0.0	4	38
Truck/bus over 10,000 lbs.	213	2.0	10	17.9	23	180
Unknown	136	1.3	0	0.0	8	128
Total	10,443	100.0	56	100.0	1,620	8,767

MSP Post 71 - Cadillac (continued)

5-Year Trend - Crashes by Month

Month	2012		2013		2014		2015		2016	
	Total Crashes	Fatal Crashes	Total Crashes	Fatal Crashes	Total Crashes	Fatal Crashes	Total Crashes	Fatal Crashes	Total Crashes	Fatal Crashes
January	674	1	674	5	934	0	656	2	631	0
February	548	2	583	2	698	1	728	2	557	2
March	372	2	460	0	555	1	407	2	455	0
April	311	1	436	0	438	1	426	2	437	1
May	400	3	439	0	427	0	418	1	474	3
June	532	4	511	1	525	1	562	1	509	2
July	513	3	539	3	498	3	563	3	616	1
August	510	2	522	3	520	4	505	5	509	7
September	478	2	485	7	480	4	483	3	536	6
October	658	2	578	1	575	0	591	1	623	3
November	748	2	894	3	895	2	710	3	689	3
December	648	2	830	1	602	4	585	2	837	3
Total	6,392	26	6,951	26	7,147	21	6,634	27	6,873	31

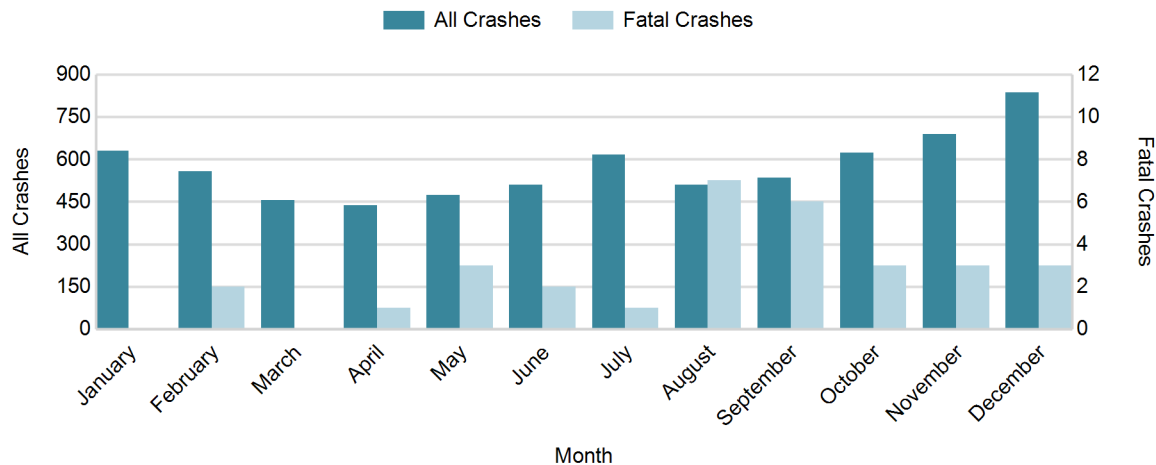
Note: † Indicates that the highest number of total crashes reported in the 5-year period occurred in the same month

5-Year Trend - Crashes by Day of Week

Day	2012		2013		2014		2015		2016	
	Total Crashes	Fatal Crashes	Total Crashes	Fatal Crashes	Total Crashes	Fatal Crashes	Total Crashes	Fatal Crashes	Total Crashes	Fatal Crashes
Monday	902	3	1,032	5	1,022	3	869	1	945	6
Tuesday	877	4	1,135	2	1,107	4	956	2	1,003	5
Wednesday	907	3	1,046	2	1,089	1	1,029	7	1,080	1
Thursday	983	2	1,081	3	1,051	2	1,057	5	1,055	6
Friday	1,177	6	1,096	5	1,266	2	1,073	6	1,194	5
Saturday	834	3	869	5	873	7	907	3	846	4
Sunday	712	5	692	4	739	2	743	3	750	4
Total	6,392	26	6,951	26	7,147	21	6,634	27	6,873	31

Note: † Indicates that the highest number of total crashes reported in the 5-year period occurred on the same day of the week

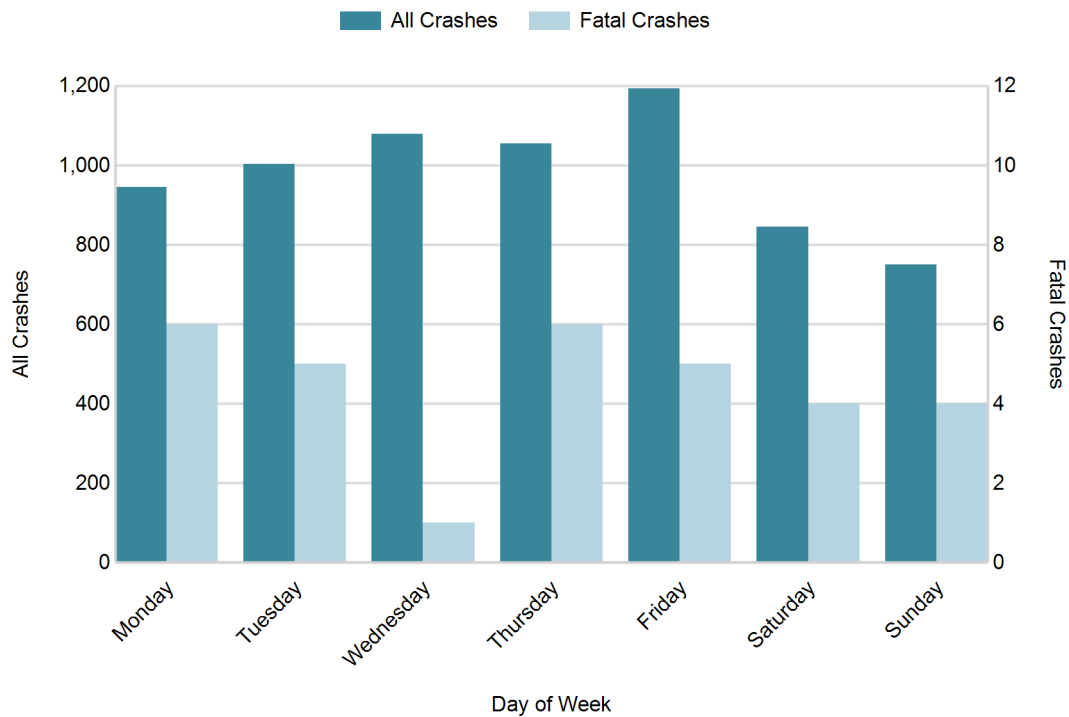
2016 Crashes by Month



2016 - Crashes by Day of Week

Day	All Crashes		Fatal Crashes		Injury Crashes			PDO Crashes
	Number	% of Total	Number	% of Fatal	A	B	C	Number
Monday	945	13.7	6	19.4	17	35	86	801
Tuesday	1,003	14.6	5	16.1	14	27	84	873
Wednesday	1,080	15.7	1	3.2	15	40	98	926
Thursday	1,055	15.3	6	19.4	13	36	91	909
Friday	1,194	17.4	5	16.1	18	59	91	1,021
Saturday	846	12.3	4	12.9	11	50	59	722
Sunday	750	10.9	4	12.9	14	51	64	617
Total	6,873	100.0	31	100.0	102	298	573	5,869

2016 Day of Week and Severity

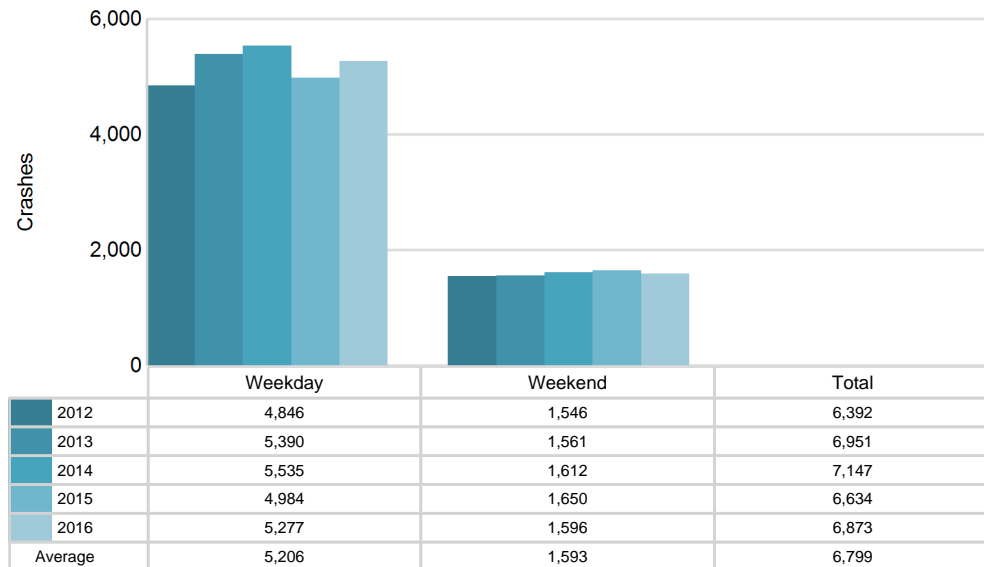


MSP Post 71 - Cadillac (continued)

5-Year Trend - Crashes by Weekday and Weekend

Portion of Week	2012		2013		2014		2015		2016	
	Total Crashes	Fatal Crashes	Total Crashes	Fatal Crashes	Total Crashes	Fatal Crashes	Total Crashes	Fatal Crashes	Total Crashes	Fatal Crashes
Weekday	4,846	18	5,390	17	5,535	12	4,984	21	5,277	23
Weekend	1,546	8	1,561	9	1,612	9	1,650	6	1,596	8
Total	6,392	26	6,951	26	7,147	21	6,634	27	6,873	31

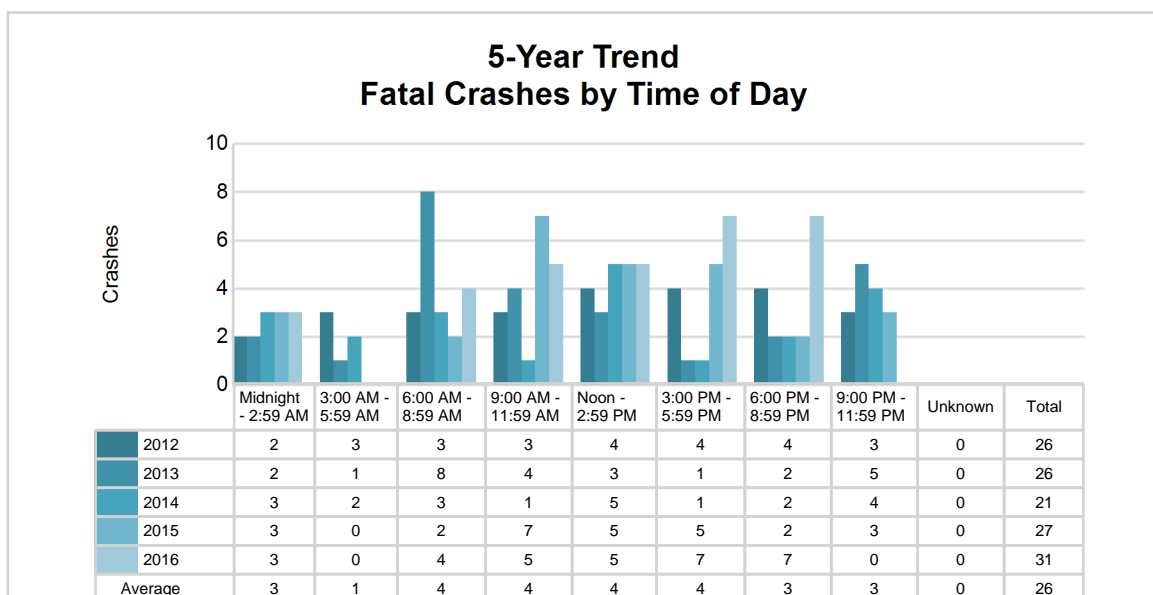
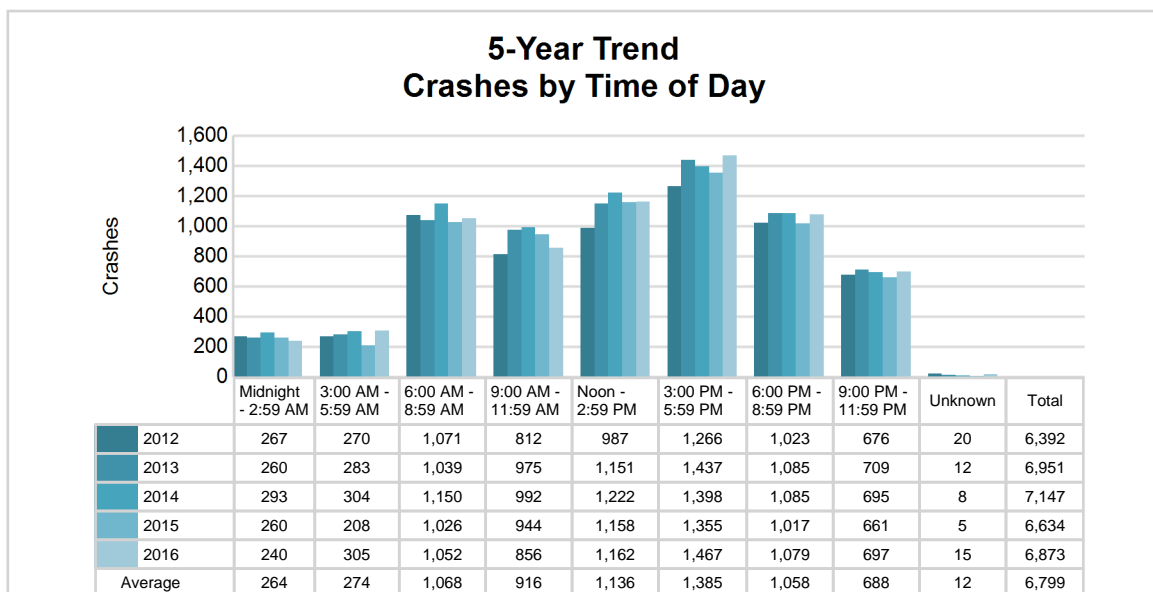
5-Year Crash Trends by Weekday (Monday - Friday) and Weekend (Saturday & Sunday)



5-Year Trend - Crashes by Time of Day

Time of Day	2012		2013		2014		2015		2016	
	Total Crashes	Fatal Crashes	Total Crashes	Fatal Crashes	Total Crashes	Fatal Crashes	Total Crashes	Fatal Crashes	Total Crashes	Fatal Crashes
Midnight - 2:59 AM	267	2	260	2	293	3	260	3	240	3
3:00 AM - 5:59 AM	270	3	283	1	304	2	208	0	305	0
6:00 AM - 8:59 AM	1,071	3	1,039	8	1,150	3	1,026	2	1,052	4
9:00 AM - 11:59 AM	812	3	975	4	992	1	944	7	856	5
Noon - 2:59 PM	987	4	1,151	3	1,222	5	1,158	5	1,162	5
3:00 PM - 5:59 PM	1,266 †	4	1,437 †	1	1,398 †	1	1,355 †	5	1,467 †	7
6:00 PM - 8:59 PM	1,023	4	1,085	2	1,085	2	1,017	2	1,079	7
9:00 PM - 11:59 PM	676	3	709	5	695	4	661	3	697	0
Unknown	20	0	12	0	8	0	5	0	15	0
Total	6,392	26	6,951	26	7,147	21	6,634	27	6,873	31

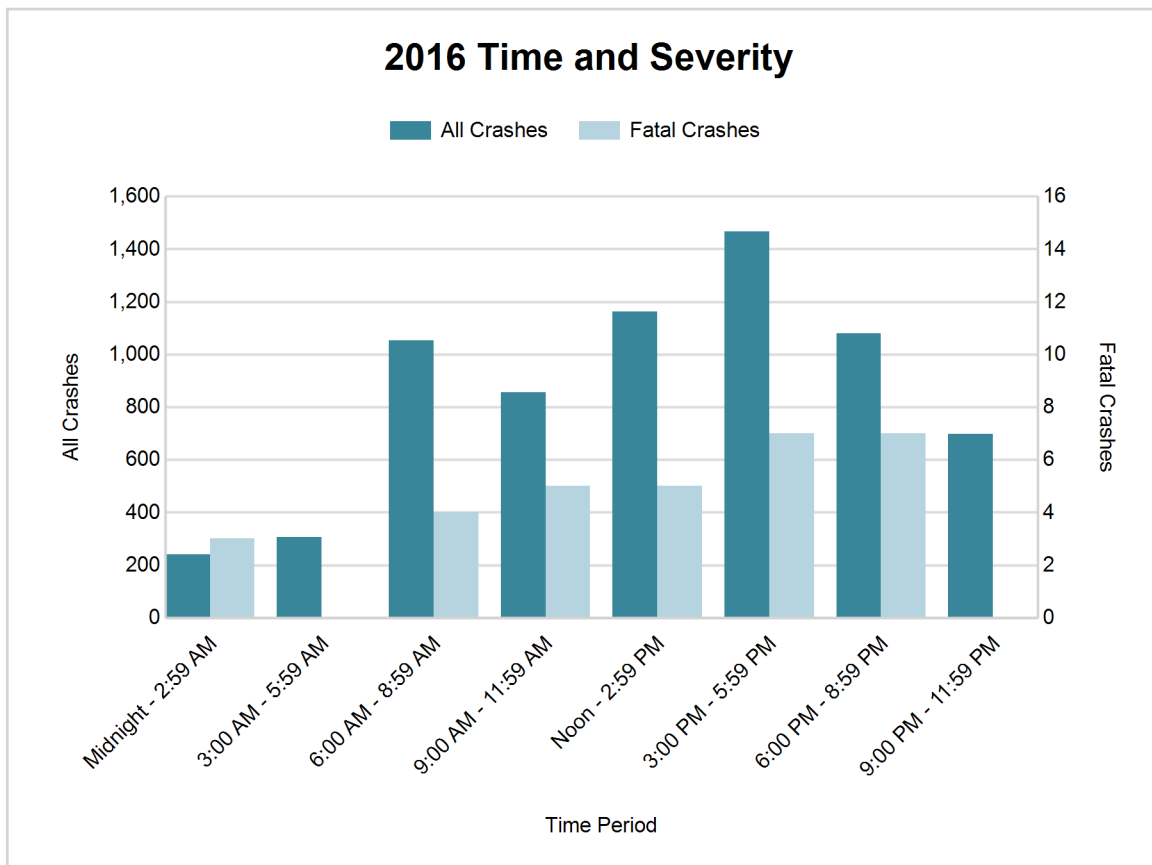
Note: † Indicates that the highest number of total crashes reported in the 5-year period occurred in the same time period



MSP Post 71 - Cadillac (continued)

2016 - Time and Severity

Time of Day	All Crashes		Fatal Crashes		Injury Crashes			PDO Crashes
	Number	% of Total	Number	% of Fatal	A	B	C	Number
Midnight - 2:59 AM	240	3.5	3	9.7	3	14	11	209
3:00 AM - 5:59 AM	305	4.4	0	0.0	5	10	17	273
6:00 AM - 8:59 AM	1,052	15.3	4	12.9	12	26	65	945
9:00 AM - 11:59 AM	856	12.5	5	16.1	14	34	69	734
Noon - 2:59 PM	1,162	16.9	5	16.1	21	60	129	947
3:00 PM - 5:59 PM	1,467	21.3	7	22.6	17	69	151	1,223
6:00 PM - 8:59 PM	1,079	15.7	7	22.6	21	50	85	916
9:00 PM - 11:59 PM	697	10.1	0	0.0	9	35	45	608
Unknown	15	0.2	0	0.0	0	0	1	14
Total	6,873	100.0	31	100.0	102	298	573	5,869



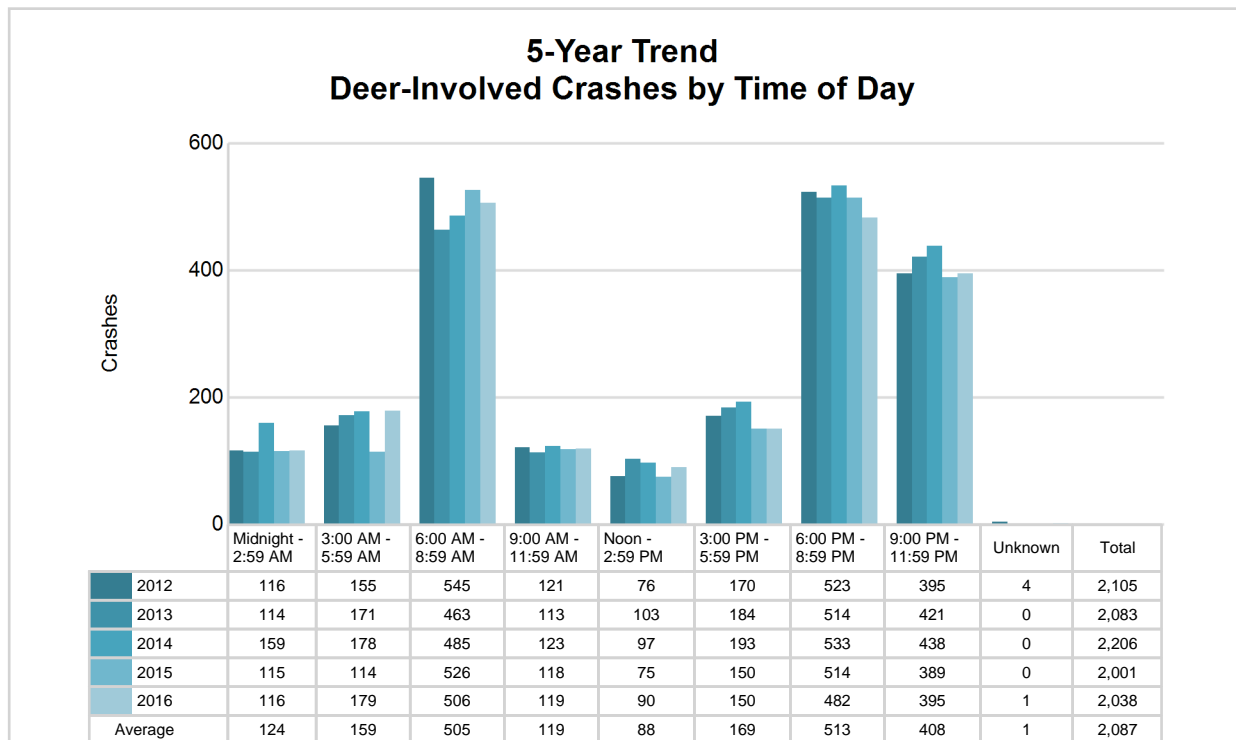
MSP Post 71 - Cadillac (continued)

7

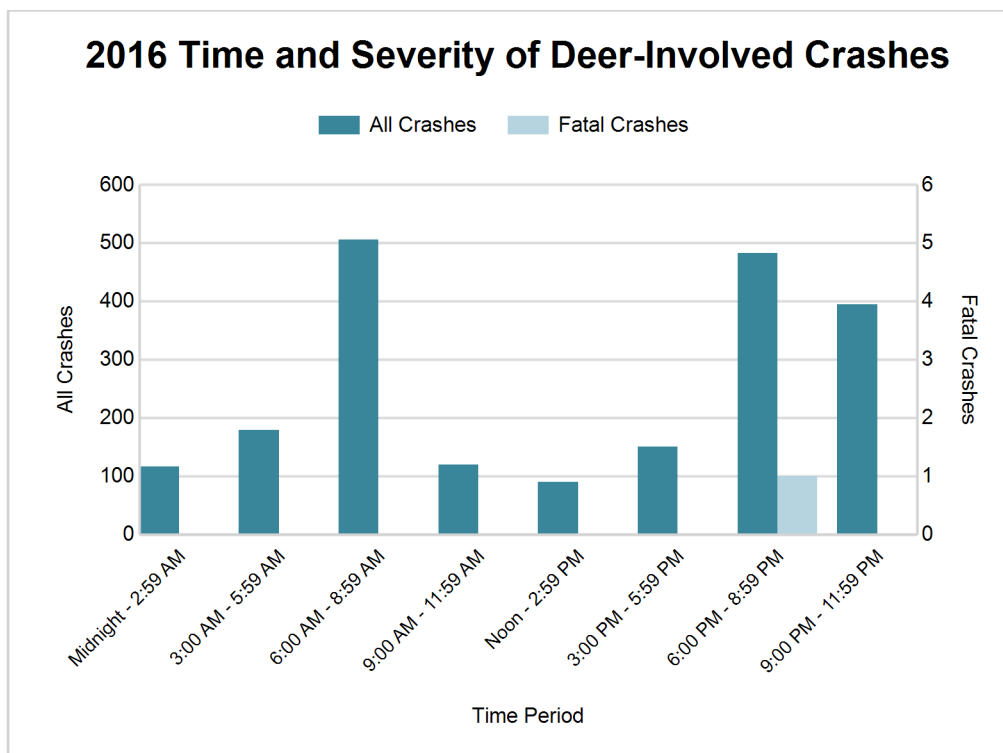
5-Year Trend - Deer-Involved Crashes by Time of Day

Time of Day	2012		2013		2014		2015		2016	
	Total Crashes	Fatal Crashes	Total Crashes	Fatal Crashes	Total Crashes	Fatal Crashes	Total Crashes	Fatal Crashes	Total Crashes	Fatal Crashes
Midnight - 2:59 AM	116	0	114	0	159	0	115	0	116	0
3:00 AM - 5:59 AM	155	0	171	0	178	0	114	0	179	0
6:00 AM - 8:59 AM	545	0	463	0	485	0	526	0	506	0
9:00 AM - 11:59 AM	121	0	113	0	123	0	118	0	119	0
Noon - 2:59 PM	76	0	103	0	97	0	75	0	90	0
3:00 PM - 5:59 PM	170	0	184	0	193	0	150	0	150	0
6:00 PM - 8:59 PM	523	0	514	0	533	0	514	0	482	1
9:00 PM - 11:59 PM	395	0	421	0	438	0	389	0	395	0
Unknown	4	0	0	0	0	0	0	0	1	0
Total	2,105	0	2,083	0	2,206	0	2,001	0	2,038	1

Note: † Indicates that the highest number of total crashes reported in the 5-year period occurred in the same time period



MSP Post 71 - Cadillac (continued)



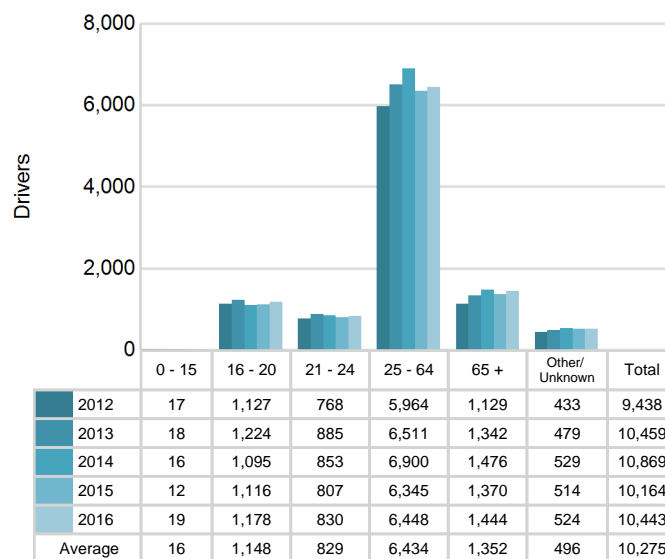
2016 - Reported Motor Vehicle Crashes by County

County	Crashes											Persons	
	Total	Fatal	Injury	Property Damage	Inter-state	US Route	State Route	Local Street	Alcohol-Involved	Drug-Involved	Deer-Involved	Fatalities	Injuries
Benzie	571	1	60	510	0	144	99	327	19	6	288	2	77
Grand Traverse	3,518	13	529	2,976	0	1,029	430	2,059	127	31	628	15	724
Leelanau	665	4	103	558	0	0	320	344	50	5	287	7	140
Manistee	962	3	103	856	0	255	170	534	30	5	521	3	150
Wexford	1,157	10	178	969	0	352	330	472	52	13	314	10	242
Total	6,873	31	973	5,869	0	1,780	1,349	3,736	278	60	2,038	37	1,333

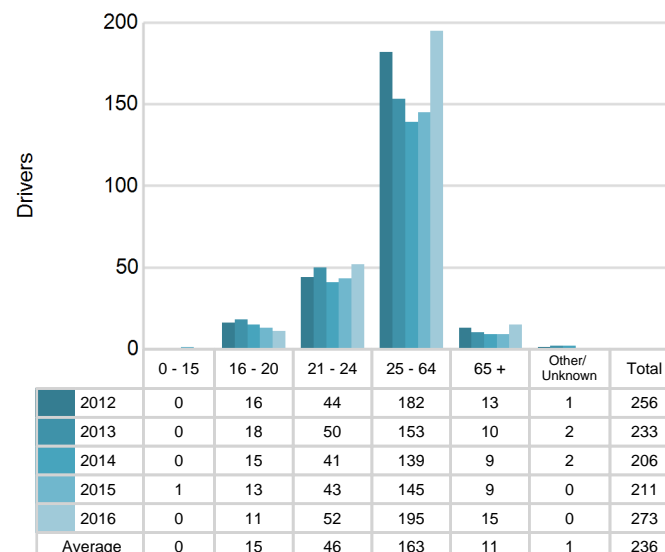
5-Year Trend - Drivers in Crashes Coded Drinking by Driver Age

Driver Age	2012		2013		2014		2015		2016	
	Total Drivers in Crashes	Total Drivers Coded Drinking	Total Drivers in Crashes	Total Drivers Coded Drinking	Total Drivers in Crashes	Total Drivers Coded Drinking	Total Drivers in Crashes	Total Drivers Coded Drinking	Total Drivers in Crashes	Total Drivers Coded Drinking
0 - 15	17	0	18	0	16	0	12	1	19	0
16 - 20	1,127	16	1,224	18	1,095	15	1,116	13	1,178	11
21 - 24	768	44	885	50	853	41	807	43	830	52
25 - 64	5,964	182	6,511	153	6,900	139	6,345	145	6,448	195
65 +	1,129	13	1,342	10	1,476	9	1,370	9	1,444	15
Unknown	433	1	479	2	529	2	514	0	524	0
Total	9,438	256	10,459	233	10,869	206	10,164	211	10,443	273

**5-Year Trend
Total Drivers in Crashes by Age**



**5-Year Trend
Total Drivers Coded Drinking by Age**



MSP Post 71 - Cadillac (continued)

2016 - Bodily Alcohol Concentration (BAC) Results Among All Vehicle Drivers in Alcohol-Involved Crashes by Age

Age Group	Drivers				BAC Result Range for Drivers Coded Drinking				
	Total Drivers in Alcohol-Involved Crashes	Total Drivers Tested in all Crashes	Total Drivers Coded Drinking, Tested	Total Drivers Coded Drinking	BAC = 0.00	BAC 0.01 g/dL to 0.07 g/dL	BAC 0.08 g/dL to 0.16 g/dL	BAC 0.17 g/dL and Above	BAC Not Reported
0 - 15	0	0	0	0	0	0	0	0	0
16 - 20	17	26	10	11	0	5	3	1	2
21 - 24	59	56	46	52	1	3	17	15	16
25 - 64	251	245	159	195	0	28	60	41	66
65 +	23	32	14	15	0	5	4	3	3
Unknown	18	1	0	0	0	0	0	0	0
Total	368	360	229	273	1	41	84	60	87

Notes: BAC measured in grams (g) per deciliter (dL).

BAC may not be reported if drivers are not tested or if the results are not available immediately (as in the case of a blood test).

A driver may be coded by the officer as drinking even though no test is administered.

Alcohol-Involved Crashes

In 2016, there were 368 drivers in alcohol-involved crashes; 273 (74.2%) of those drivers were coded as had-been-drinking by the officer on the crash form.

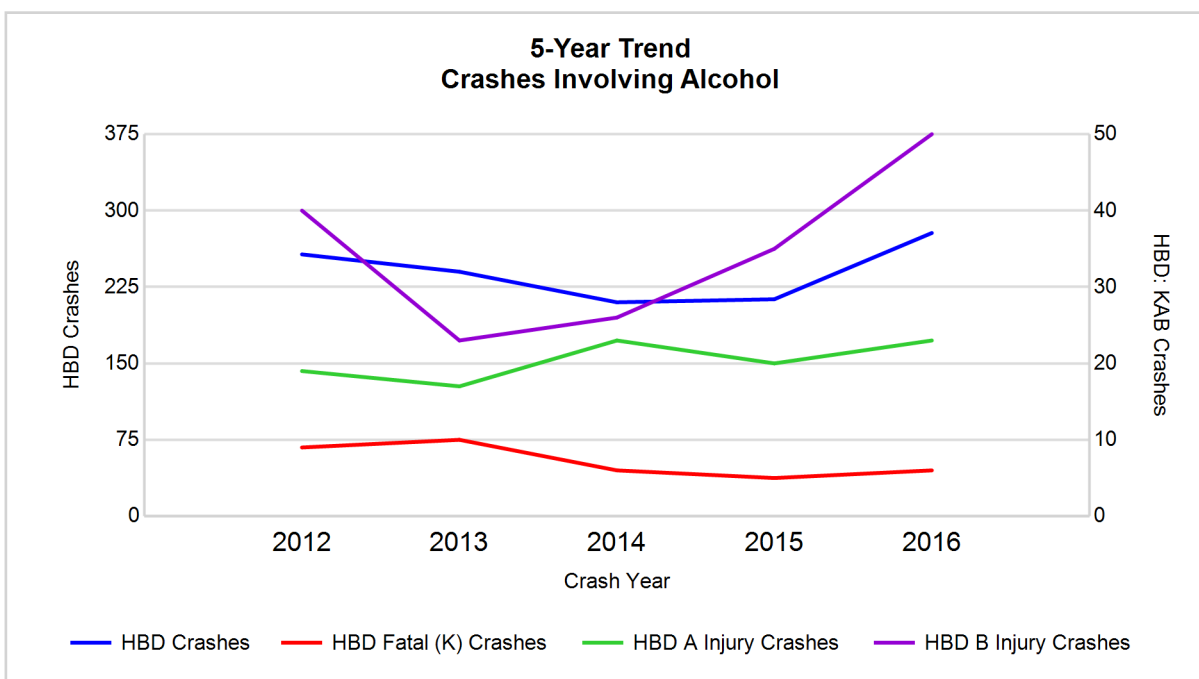
- 144 (52.7%) of the 273 drivers had a blood alcohol concentration (BAC) of 0.08 g/dL (grams per deciliter) or greater, and 60 (41.7%) of the 144 drivers had a BAC at or above 0.17 g/dL.
- 229 (83.9%) of the 273 drivers were coded as had-been-drinking and were tested for alcohol consumption.

5-Year Trend - Crashes Involving Alcohol

Year	All Crashes	HBD Crashes	% HBD	Fatal Crashes	HBD Fatal Crashes	% HBD	A Injury Crashes	HBD A Injury Crashes	% HBD	B Injury Crashes	HBD B Injury Crashes	% HBD
2012	6,392	257	4.0	26	9	34.6	107	19	17.8	262	40	15.3
2013	6,951	240	3.5	26	10	38.5	111	17	15.3	236	23	9.7
2014	7,147	210	2.9	21	6	28.6	95	23	24.2	203	26	12.8
2015	6,634	213	3.2	27	5	18.5	83	20	24.1	244	35	14.3
2016	6,873	278**	4.0	31**	6	19.4	102	23	22.5	298**	50**	16.8**

Note: * Indicates that the most recent year is the lowest number or percentage reported in the 5-year period in that column

** Indicates that the most recent year is the highest number or percentage reported in the 5-year period in that column

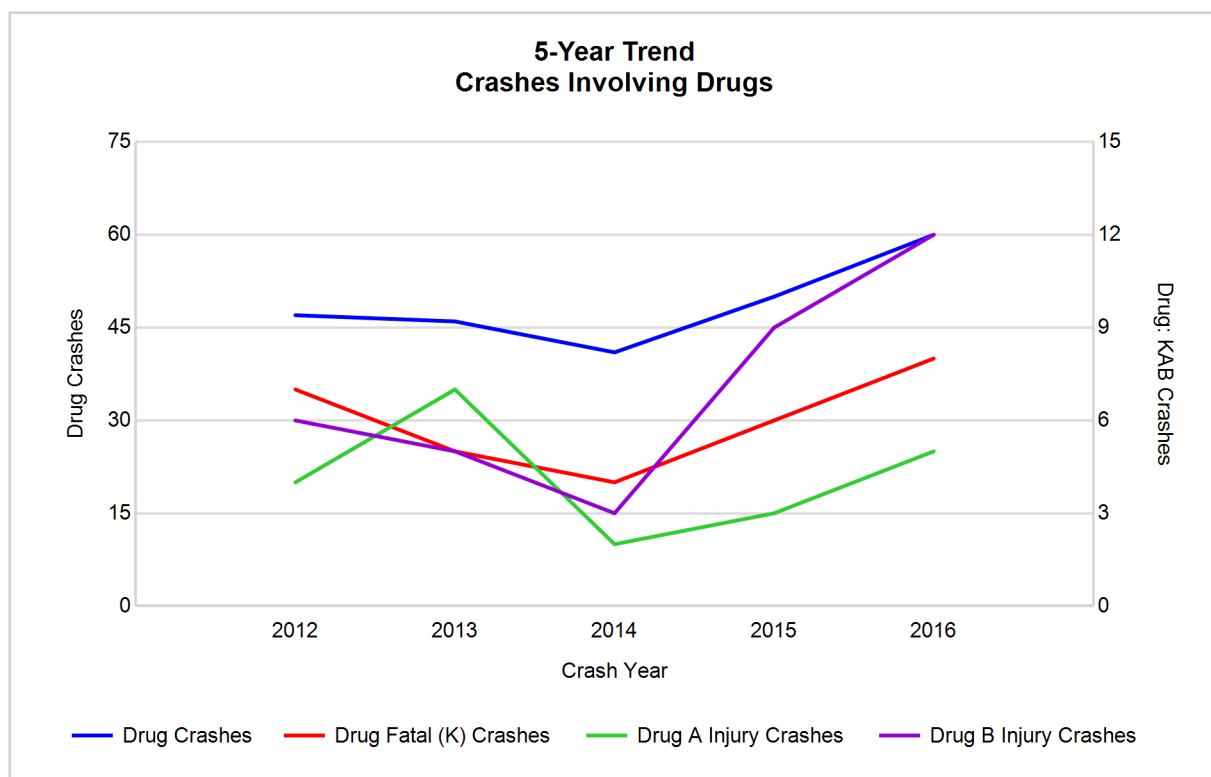


Note: Had-Been-Drinking (HBD)

5-Year Trend - Crashes Involving Drugs

Year	All Crashes	Drug Crashes	% Drug	Fatal Crashes	Drug Fatal Crashes	% Drug	A Injury Crashes	Drug A Injury Crashes	% Drug	B Injury Crashes	Drug B Injury Crashes	% Drug
2012	6,392	47	0.7	26	7	26.9	107	4	3.7	262	6	2.3
2013	6,951	46	0.7	26	5	19.2	111	7	6.3	236	5	2.1
2014	7,147	41	0.6	21	4	19.0	95	2	2.1	203	3	1.5
2015	6,634	50	0.8	27	6	22.2	83	3	3.6	244	9	3.7
2016	6,873	60**	0.9**	31**	8**	25.8	102	5	4.9	298**	12**	4.0**

Note: * Indicates that the most recent year is the lowest number or percentage reported in the 5-year period in that column
 ** Indicates that the most recent year is the highest number or percentage reported in the 5-year period in that column

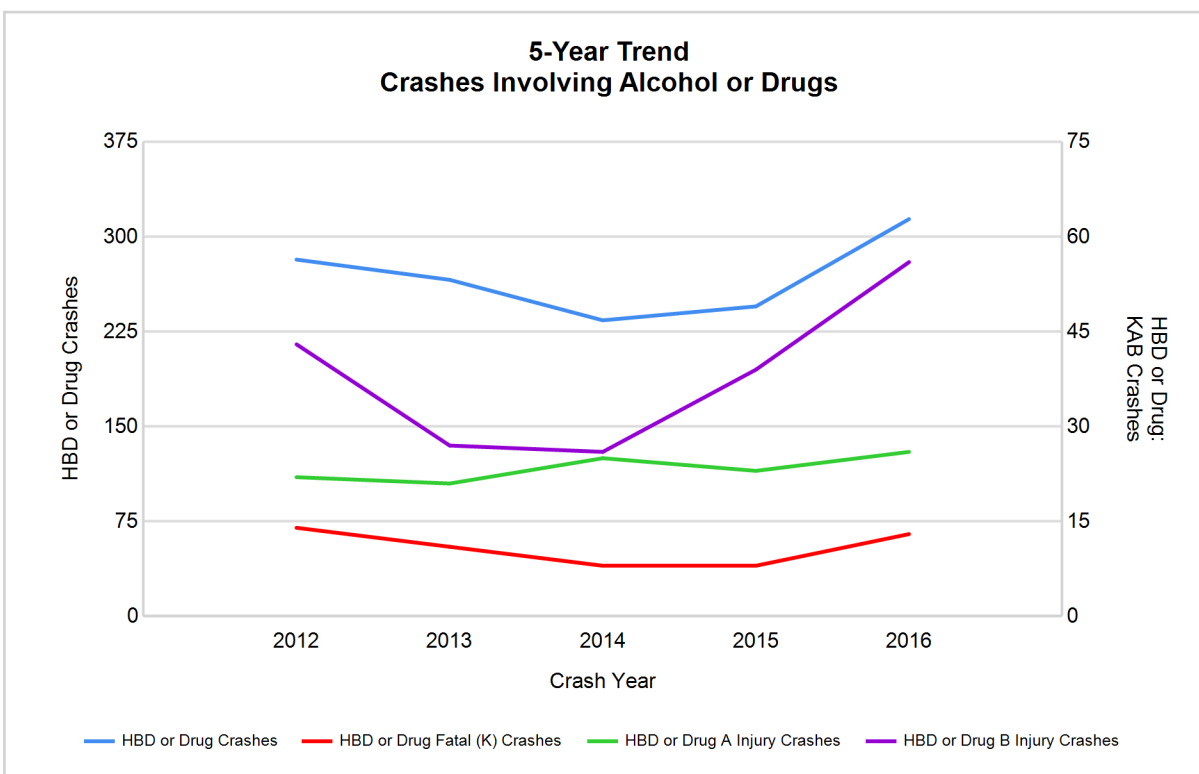


5-Year Trend - Crashes Involving Alcohol or Drugs

Year	All Crashes	HBD or Drug Crashes	% HBD or Drug	Fatal Crashes	HBD or Drug Fatal Crashes	% HBD or Drug	A Injury Crashes	HBD or Drug A Injury Crashes	% HBD or Drug	B Injury Crashes	HBD or Drug B Injury Crashes	% HBD or Drug
2012	6,392	282	4.4	26	14	53.8	107	22	20.6	262	43	16.4
2013	6,951	266	3.8	26	11	42.3	111	21	18.9	236	27	11.4
2014	7,147	234	3.3	21	8	38.1	95	25	26.3	203	26	12.8
2015	6,634	245	3.7	27	8	29.6	83	23	27.7	244	39	16.0
2016	6,873	314**	4.6**	31**	13	41.9	102	26**	25.5	298**	56**	18.8**

Note: * Indicates that the most recent year is the lowest number or percentage reported in the 5-year period in that column

** Indicates that the most recent year is the highest number or percentage reported in the 5-year period in that column



Note: Had-Been-Drinking (HBD)

MSP Post 71 - Cadillac (continued)

13

2016 - Restraints Worn Among Vehicle Drivers and Injured Passengers by Vehicle Type

Vehicle Type	Total Occupants			Fatalities			A - Suspected Serious			B - Suspected Minor			C - Possible Injury			No Injury		
	Total	Used Restraint	%	Total	Used Restraint	%	Total	Used Restraint	%	Total	Used Restraint	%	Total	Used Restraint	%	Total	Used Restraint	%
Passenger car, SUV, van	8,259	7,772	94.1	24	14	58.3	92	67	72.8	250	225	90.0	643	614	95.5	6,962	6,835	98.2
Motor home	143	134	93.7	0	0	0.0	2	2	100.0	2	2	100.0	10	10	100.0	121	120	99.2
Pickup truck	1,806	1,683	93.2	4	3	75.0	13	4	30.8	60	49	81.7	94	89	94.7	1,557	1,536	98.7
Small truck under 10,000 lbs. GVWR	86	76	88.4	0	0	0.0	1	1	100.0	2	2	100.0	5	5	100.0	69	68	98.6
Motorcycle	85	59	69.4	4	1	25.0	11	8	72.7	34	25	73.5	18	13	72.2	16	12	75.0
Moped / goped	12	5	41.7	0	0	0.0	2	0	0.0	6	3	50.0	4	2	50.0	0	0	0.0
Go-cart / golf cart	0	0	0.0	0	0	0.0	0	0	0.0	0	0	0.0	0	0	0.0	0	0	0.0
Snowmobile	7	5	71.4	0	0	0.0	1	1	100.0	1	0	0.0	1	1	100.0	3	3	100.0
Off-Road Vehicle - ORV / All-Terrain Vehicle - ATV	10	8	80.0	1	0	0.0	2	1	50.0	3	3	100.0	4	4	100.0	0	0	0.0
Other	42	26	61.9	0	0	0.0	1	1	100.0	1	1	100.0	1	0	0.0	31	24	77.4
Truck/bus over 10,000 lbs.	214	197	92.1	0	0	0.0	1	1	100.0	4	2	50.0	4	4	100.0	196	190	96.9
Unknown	136	3	2.2	0	0	0.0	0	0	0.0	0	0	0.0	1	1	100.0	3	2	66.7
Total	10,800	9,968	92.3	33	18	54.5	126	86	68.3	363	312	86.0	785	743	94.6	8,958	8,790	98.1

Note: Restraint Use includes shoulder belt only used, lap belt only used, both lap and shoulder belts used, child restraint used, restraint failure, and helmet worn.

2016 - Restraints Worn Among Vehicle Drivers and Injured Passengers by Age

Age Group	Total Occupants			Fatalities			A - Suspected Serious			B - Suspected Minor			C - Possible Injury			No Injury		
	Total	Used Restraint	%	Total	Used Restraint	%	Total	Used Restraint	%	Total	Used Restraint	%	Total	Used Restraint	%	Total	Used Restraint	%
0 - 15	97	87	89.7	1	0	0.0	7	6	85.7	25	20	80.0	51	48	94.1	13	13	100.0
16 - 20	1,218	1,185	97.3	2	2	100.0	14	7	50.0	49	45	91.8	79	73	92.4	1,069	1,054	98.6
21 - 24	861	830	96.4	1	0	0.0	14	9	64.3	36	30	83.3	65	60	92.3	744	730	98.1
25 - 64	6,606	6,406	97.0	18	8	44.4	72	48	66.7	203	174	85.7	477	455	95.4	5,814	5,708	98.2
65 +	1,492	1,459	97.8	11	8	72.7	18	16	88.9	49	43	87.8	113	107	94.7	1,300	1,284	98.8
Unknown	526	1	0.2	0	0	0.0	1	0	0.0	1	0	0.0	0	0	0.0	18	1	5.6
Total	10,800	9,968	92.3	33	18	54.5	126	86	68.3	363	312	86.0	785	743	94.6	8,958	8,790	98.1

Note: Restraint Use includes shoulder belt only used, lap belt only used, both lap and shoulder belts used, child restraint used, restraint failure, and helmet worn.

5-Year Trend - Restraint Use Among Drivers

Restraint Use	2012			2013			2014			2015			2016		
	Drivers	Fatal Drivers	Injured Drivers	Drivers	Fatal Drivers	Injured Drivers	Drivers	Fatal Drivers	Injured Drivers	Drivers	Fatal Drivers	Injured Drivers	Drivers	Fatal Drivers	Injured Drivers
No belts available	71	0	8	47	1	9	111	0	11	52	1	10	33	0	4
Shoulder belt only used	4	0	1	4	0	1	24	0	2	12	0	2	34	0	3
Lap belt only used	60	0	5	35	0	7	64	0	4	48	0	1	45	0	4
Both lap & shoulder belts used	8,553	10	753	9,580	11	833	9,832	4	736	9,237	7	766	9,517	13	787
No belts used	65	6	26	45	5	20	89	1	24	76	5	30	71	6	31
Child restraint used	2	0	0	0	0	0	0	0	0	0	0	0	1	0	0
Child restraint not used, unavailable or improper use	3	0	0	3	0	0	0	0	0	0	0	0	0	0	0
Restraint failure	3	0	0	8	0	0	5	1	0	3	0	0	6	0	2
Restraint use unknown	203	2	23	224	1	24	224	0	24	181	1	14	466	1	21
Helmet worn	81	5	54	72	1	50	61	2	48	73	5	49	66	1	50
Helmet not worn	20	2	17	18	0	18	12	0	10	26	0	19	25	3	19
Helmet use unknown	6	0	1	3	0	2	2	0	1	8	1	3	5	0	4
Uncoded & errors	367	0	1	420	0	0	445	0	0	448	0	0	174	0	1
Total	9,438	25	889	10,459	19	964	10,869	8	860	10,164	20	894	10,443	24	926

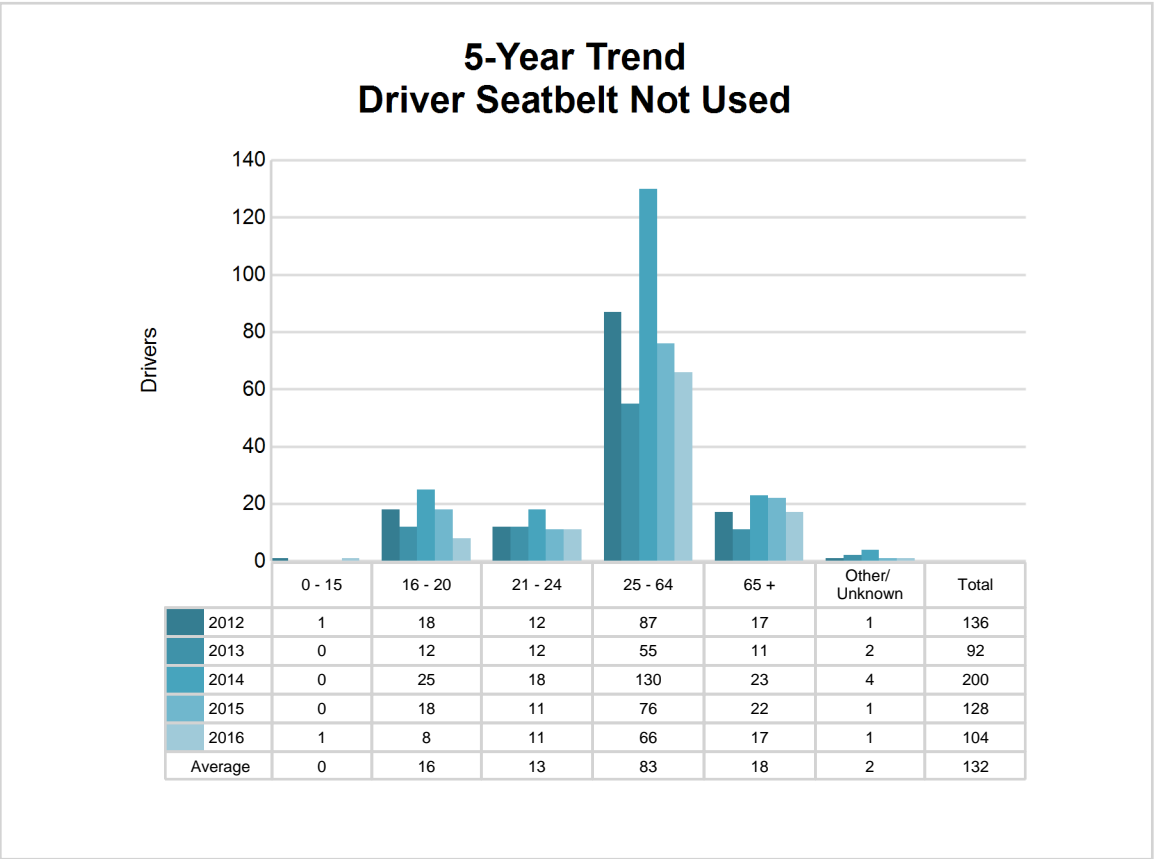
5-Year Trend - Restraint Use Among Drivers Coded Drinking

Restraint Use	2012			2013			2014			2015			2016		
	Drivers	Fatal Drivers	Injured Drivers	Drivers	Fatal Drivers	Injured Drivers	Drivers	Fatal Drivers	Injured Drivers	Drivers	Fatal Drivers	Injured Drivers	Drivers	Fatal Drivers	Injured Drivers
No belts available	2	0	0	0	0	0	6	0	1	3	0	3	2	0	1
Shoulder belt only used	2	0	0	1	0	1	1	0	1	0	0	0	1	0	1
Lap belt only used	1	0	0	3	0	2	2	0	0	0	0	0	0	0	0
Both lap & shoulder belts used	182	2	54	158	1	37	148	0	31	159	1	46	208	2	59
No belts used	19	5	7	13	3	6	10	1	9	13	2	9	14	2	10
Child restraint used	0	0	0	0	0	0	0	0	0	0	0	0	0	0	0
Child restraint not used, unavailable or improper use	0	0	0	0	0	0	0	0	0	0	0	0	0	0	0
Restraint failure	0	0	0	0	0	0	2	0	0	0	0	0	1	0	1
Restraint use unknown	40	0	12	48	1	13	28	0	12	23	0	9	35	0	10
Helmet worn	4	2	2	6	1	4	7	1	6	7	1	6	4	0	3
Helmet not worn	5	0	5	2	0	2	1	0	1	5	0	5	4	1	3
Helmet use unknown	0	0	0	0	0	0	0	0	0	1	0	1	2	0	2
Uncoded & errors	1	0	0	2	0	0	1	0	0	0	0	0	2	0	1
Total	256	9	80	233	6	65	206	2	61	211	4	79	273	5	91

5-Year Trend - Seatbelt Not Used Among Drivers by Age

Age Group	2012			2013			2014			2015			2016		
	Drivers	Fatal Drivers	Injured Drivers	Drivers	Fatal Drivers	Injured Drivers	Drivers	Fatal Drivers	Injured Drivers	Drivers	Fatal Drivers	Injured Drivers	Drivers	Fatal Drivers	Injured Drivers
0 - 15	1	0	0	0	0	0	0	0	0	0	0	0	1	0	1
16 - 20	18	1	6	12	0	8	25	1	6	18	1	10	8	0	2
21 - 24	12	1	5	12	0	2	18	0	5	11	1	2	11	1	6
25 - 64	87	2	19	55	4	16	130	0	23	76	2	23	66	4	20
65 +	17	2	4	11	2	3	23	0	1	22	2	5	17	1	6
Unknown	1	0	0	2	0	0	4	0	0	1	0	0	1	0	0
Total	136	6	34	92	6	29	200	1	35	128	6	40	104	6	35

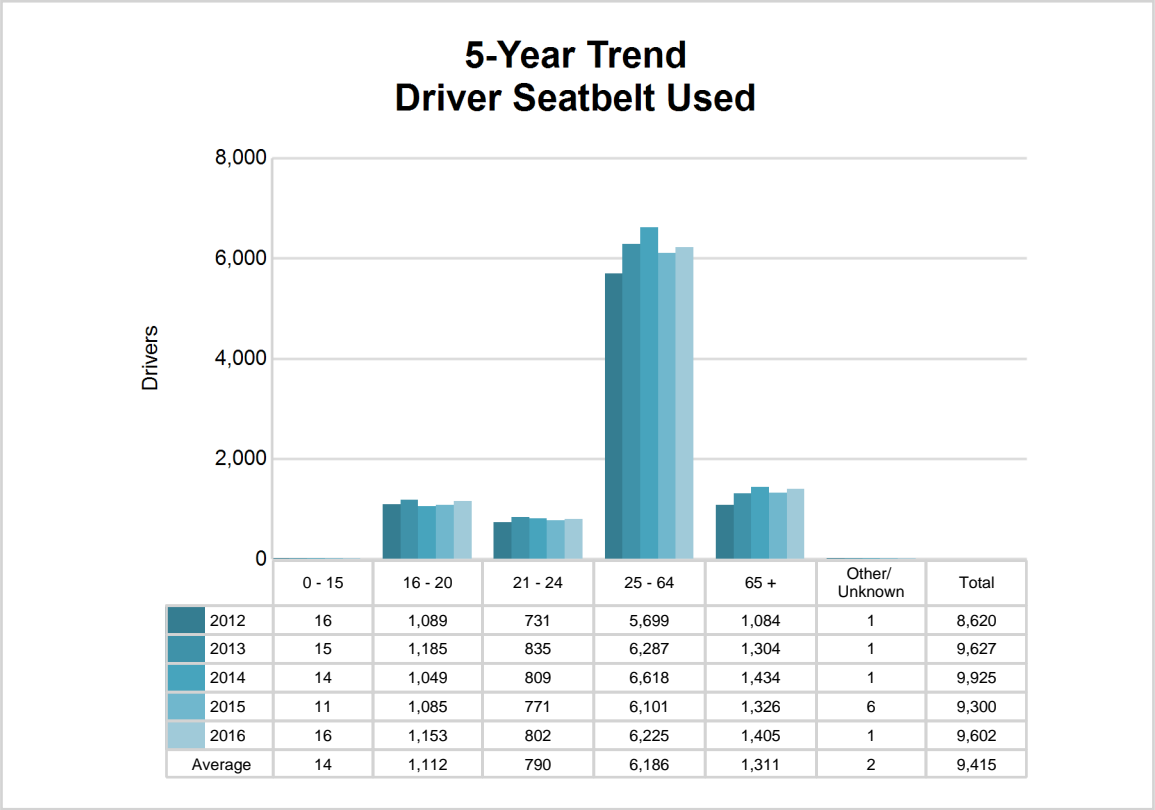
Note: Seatbelt Not Used includes no belts available or no belts used.



5-Year Trend - Seatbelt Used Among Drivers by Age

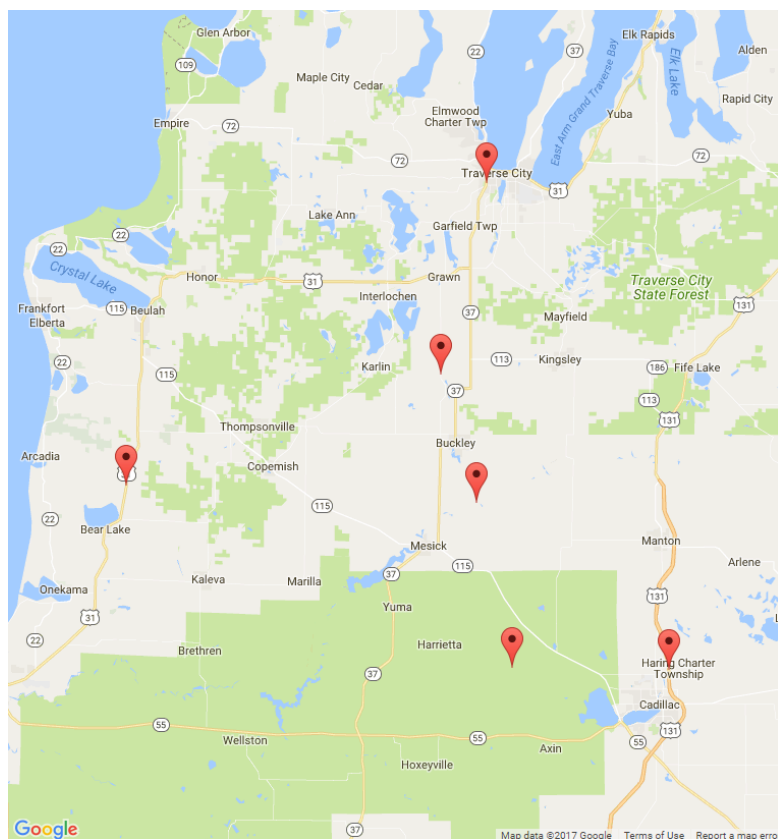
Age Group	2012			2013			2014			2015			2016		
	Drivers	Fatal Drivers	Injured Drivers	Drivers	Fatal Drivers	Injured Drivers	Drivers	Fatal Drivers	Injured Drivers	Drivers	Fatal Drivers	Injured Drivers	Drivers	Fatal Drivers	Injured Drivers
0 - 15	16	0	0	15	0	1	14	0	2	11	0	3	16	0	3
16 - 20	1,089	0	116	1,185	2	104	1,049	0	69	1,085	2	97	1,153	1	94
21 - 24	731	1	58	835	0	74	809	1	82	771	0	71	802	0	73
25 - 64	5,699	6	479	6,287	4	523	6,618	4	459	6,101	3	465	6,225	4	512
65 +	1,084	3	106	1,304	5	139	1,434	0	130	1,326	2	133	1,405	8	114
Unknown	1	0	0	1	0	0	1	0	0	6	0	0	1	0	0
Total	8,620	10	759	9,627	11	841	9,925	5	742	9,300	7	769	9,602	13	796

Note: Seatbelt Used includes shoulder belt only used, lap belt only used, both lap and shoulder belts used, and restraint failure.



5-Year Trend - Drivers in Crashes by Hazardous Action

Hazardous Action	2012		2013		2014		2015		2016	
	Total Drivers in Crashes	Drivers in Fatal Crashes	Total Drivers in Crashes	Drivers in Fatal Crashes	Total Drivers in Crashes	Drivers in Fatal Crashes	Total Drivers in Crashes	Drivers in Fatal Crashes	Total Drivers in Crashes	Drivers in Fatal Crashes
None	5,258	17	5,659	19	6,165	16	5,807	14	5,735	23
Speed too fast	896	7	1,223	9	1,136	3	888	9	967	7
Speed too slow	10	0	11	0	14	0	15	0	11	0
Failed to yield	868	4	874	2	1,006	1	894	4	955	4
Disregard traffic control	126	0	133	6	124	0	130	0	125	4
Drove wrong way	2	0	3	0	5	0	5	0	5	0
Drove left of center	71	3	67	0	83	3	59	4	85	3
Improper passing	42	1	35	0	44	0	50	0	49	0
Improper lane use	99	0	139	0	126	1	123	0	156	3
Improper turn	58	0	58	0	60	0	55	0	67	0
Improper/no signal	16	1	19	0	31	0	13	0	6	0
Improper backing	145	0	139	0	173	0	166	0	153	0
Unable to stop in assured clear distance	1,004	1	1,236	0	1,199	0	1,192	1	1,242	1
Other	291	3	296	1	319	2	339	1	302	0
Unknown	147	2	166	1	159	2	197	5	326	7
Reckless driving	41	1	30	1	21	2	33	1	22	1
Careless/negligent driving	224	1	216	2	172	1	188	3	223	2
Uncoded & errors	140	1	155	0	32	0	10	0	14	1
Total	9,438	42	10,459	41	10,869	31	10,164	42	10,443	56



The picture above represents all 2016 alcohol-involved fatal crashes in Post 71.

In 2016, there were 278 alcohol-involved crashes in Post 71:

6	K - Fatal Crashes
23	A - Suspected Serious Injury Crashes
50	B - Suspected Minor Injury Crashes
41	C - Possible Injury Crashes
158	O - Property Damage Only/No Injury Crashes

Office of Highway Safety Planning

Physical Address:
7150 Harris Drive
Dimondale, Michigan 48821

Mailing Address:
P.O. Box 30634
Lansing, Michigan 48909

Phone: (517) 284-3112
Fax: (517) 284-3151

Find us on the web:
MichiganTrafficCrashFacts.org

