

Michigan Traffic Crash Facts

Reporting Criteria

Please pay particular attention to the wording when interpreting the three levels of data gathered for this report.

Crash

The Crash Level analyzes data related to crash events and returns one result per crash.

Examples: Time, weather, and location.

Units

The Units Level analyzes the experience of the units in the crash and returns one result per vehicle, driver, pedestrian, bicyclist, or train.

Examples: Vehicle type, driver condition, and unit events.

People

The People Level analyzes the experience of the people involved in the crash and returns one result per occupant/person/party.

Examples: Age, injury severity, and seat belt or helmet use.

KABCO Injury Indicator:

K = Killed

A = Suspected Serious Injury

B = Suspected Minor Injury

C = Possible Injury

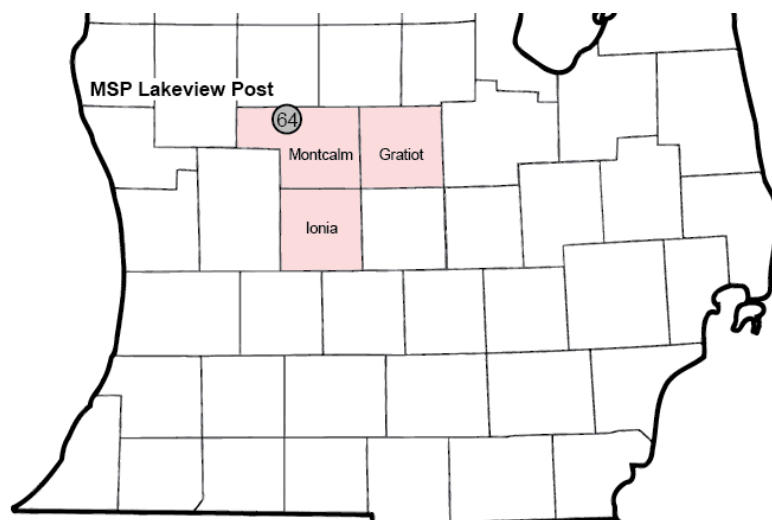
O = No Injury

Property Damage Only (PDO)

Michigan State Police (MSP) Post 64 - Lakeview

2016 Traffic Crash Data & 2012-2016 5-Year Trends

Post 64 is comprised of Gratiot, Ionia, and Montcalm counties. Trend tables for this report are based on those counties.



Sources:

The crashes in this report occurred on public roadways in Michigan and resulted in injuries, fatalities, or property damage (with \$1,000 as a reporting threshold). The information was gathered from Michigan Traffic Crash Report Forms (UD-10) submitted by local police departments, sheriff's offices, and the Michigan State Police. Other related information was obtained from the departments of Transportation, State, and Community Health.

This page left intentionally blank

MSP Post 64 - Lakeview

- There were 5,492 crashes in Post 64 during 2016. [Page 1]
- There were 15 fatalities in 14 fatal crashes in 2016 in Post 64. [Page 1]
- A total of 1,124 injuries resulted from 809 injury crashes. [Page 1]
- There were 4,669 property damage only crashes (no fatalities or injuries). [Page 1]
- November had the highest number of crashes (713). [Pages 1-2]
- July had the highest number of fatal crashes (4) and fatalities (4). [Pages 1-2]
- August had the highest number of injury crashes (88) and the highest number of injuries (121). [Page 1]
- November had the highest number of property damage only crashes (646). [Page 1]
- Of all vehicles involved in fatal crashes, four (16.7%) were motorcycles. [Page 1]
- Friday was the day of the week with the highest number of crashes (871). This is true for each year from 2012 to 2016. Monday and Friday had the highest number of fatal crashes (4). [Pages 2-3]
- The 6:00 PM – 8:59 PM time period had the highest number of crashes (1,031). This is true for each year from 2012 to 2016. The same time period also had the highest number of fatal crashes (4). [Pages 5-6]
- During the period from 2012 to 2016, the highest number of deer crashes occurred in 2012 (2,726). There were no fatal crashes involving deer in 2016. [Pages 7-8]
- Montcalm County (39.0%) had the highest number of crashes in Post 64 in 2016, followed by Gratiot County (30.7%), and Ionia County (30.3%). [Page 8]
- Ionia County (46.7%) had the highest number of fatalities in Post 64 in 2016, followed by Montcalm County (40.0%), and Gratiot County (13.3%). [Page 8]
- The highest number of drivers in crashes (7,196) occurred during 2016 within the five-year period. The highest number of drivers coded drinking in crashes (173) occurred during 2015. [Page 9]
- A total of 163 crashes involved alcohol in 2016, but 2015 had the highest number of alcohol-involved crashes, with 173. [Page 10]
- Alcohol-involved fatal crashes were the highest in 2012 and 2013 during the five-year period from 2012 to 2016 at six in both years. [Page 10]
- A total of 58 crashes and 13 suspected serious injury crashes involved drugs in 2016, both the highest during the five-year period. There were four fatal crashes involving drugs in 2016. [Page 11]
- There were 6,620 drivers wearing seatbelts and 81 drivers not wearing seatbelts in crashes in 2016. Of the 81 drivers not wearing seat belts, three (3.7%) were killed and 42 (51.9%) were injured. [Pages 14-16]
- The most common hazardous action coded for drivers in 2016 in all crashes (814) and fatal crashes (3) was speed too fast. [Page 17]

Post 64 Experience

In 2016:

There were 7,196 drivers involved in 5,492 motor vehicle crashes in MSP Post 64. Of those crashes, 14 were classified as fatal, resulting in 15 fatalities. An additional 1,124 persons were injured.

Post 64 experienced the highest number of motor vehicle crashes (713) in November, the highest number of fatal crashes (4) and the highest number of persons killed (4) in July.

Michigan driver statistics indicate 6.9 percent of licensed drivers in Post 64 were age 16-20, and 12.0 percent of drivers in crashes were also in that age group.

2016 - Crashes and Injuries by Month

Month	Crashes				Persons	
	Total	Fatal	Injury	Property Damage Only (PDO)	Fatalities	Injuries
January	555	1	68	486	1	98
February	434	1	65	368	1	83
March	384	0	54	330	0	71
April	324	0	55	269	0	69
May	394	1	80	313	2	103
June	378	0	64	314	0	84
July	337	4	72	261	4	114
August	331	3	88	240	3	121
September	407	1	72	334	1	110
October	586	1	61	524	1	94
November	713	2	65	646	2	89
December	649	0	65	584	0	88
Total	5,492	14	809	4,669	15	1,124

2016 - Driver Statistics

Age Group	Statewide			Driver Rates	
	2016 Population	Licensed Drivers	Drivers in Crashes	Per 10k Population	Per 10k Licensed
0 - 15	32,686	915	15	4.6	163.9
16 - 20	11,088	8,111	863	778.3	1,064.0
21 - 24	8,999	7,172	724	804.5	1,009.5
25 - 64	89,153	76,795	4,662	522.9	607.1
65 +	26,482	23,918	721	272.3	301.4
Unknown	0	0	211	--	--
Total	168,408	116,911	7,196	427.3	615.5

2016 - Vehicles in Crashes

Vehicle Type	Motor Vehicles		Fatal Crashes		Injury Crashes	PDO Crashes
	Number of Vehicles	% of Total	Number	% of Total	Number	Number
Passenger car, SUV, van	5,443	75.6	17	70.8	912	4,514
Motor home	45	0.6	0	0.0	8	37
Pickup truck	1,315	18.3	1	4.2	208	1,106
Small truck under 10,000 lbs. GVWR	39	0.5	0	0.0	11	28
Motorcycle	72	1.0	4	16.7	57	11
Moped / goped	5	0.1	0	0.0	5	0
Go-cart / golf cart	0	0.0	0	0.0	0	0
Snowmobile	0	0.0	0	0.0	0	0
Off-Road Vehicle - ORV / All-Terrain Vehicle - ATV	17	0.2	0	0.0	13	4
Other	35	0.5	0	0.0	9	26
Truck/bus over 10,000 lbs.	165	2.3	2	8.3	31	132
Unknown	60	0.8	0	0.0	2	58
Total	7,196	100.0	24	100.0	1,256	5,916

MSP Post 64 - Lakeview (continued)

5-Year Trend - Crashes by Month

Month	2012		2013		2014		2015		2016	
	Total Crashes	Fatal Crashes	Total Crashes	Fatal Crashes	Total Crashes	Fatal Crashes	Total Crashes	Fatal Crashes	Total Crashes	Fatal Crashes
January	624	2	510	2	619	0	547	3	555	1
February	489	2	555	2	487	2	397	0	434	1
March	344	4	458	0	412	4	338	1	384	0
April	324	2	332	0	266	0	306	1	324	0
May	456	1	405	2	371	0	382	3	394	1
June	391	2	386	1	392	2	389	0	378	0
July	346	5	359	1	344	0	399	1	337	4
August	328	1	300	2	282	4	320	2	331	3
September	388	2	374	2	321	0	337	2	407	1
October	595	0	556	2	611	2	591	1	586	1
November	681 †	2	718 †	0	800 †	2	673 †	1	713 †	2
December	547	3	603	2	397	0	413	2	649	0
Total	5,513	26	5,556	16	5,302	16	5,092	17	5,492	14

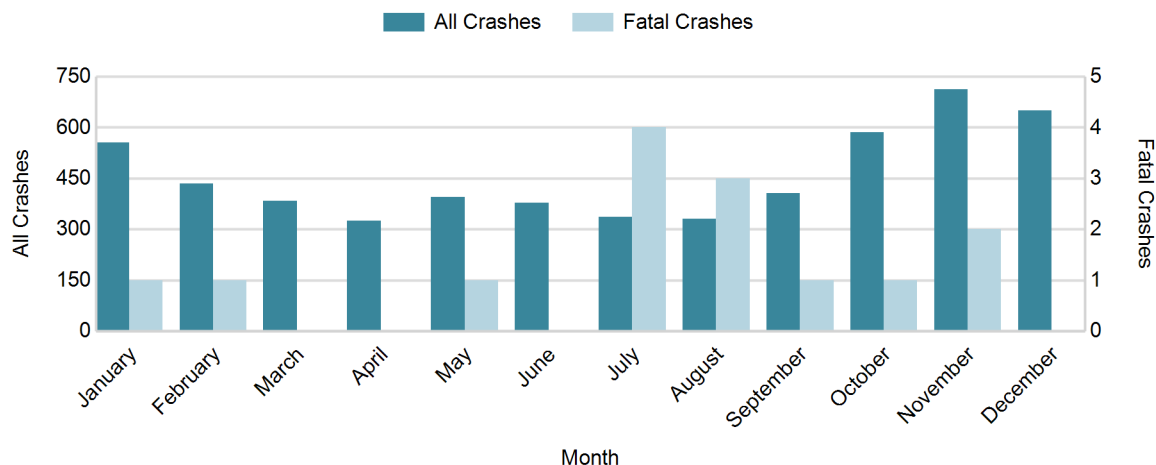
Note: † Indicates that the highest number of total crashes reported in the 5-year period occurred in the same month

5-Year Trend - Crashes by Day of Week

Day	2012		2013		2014		2015		2016	
	Total Crashes	Fatal Crashes	Total Crashes	Fatal Crashes	Total Crashes	Fatal Crashes	Total Crashes	Fatal Crashes	Total Crashes	Fatal Crashes
Monday	734	4	845	4	706	4	711	4	770	4
Tuesday	749	2	818	1	715	1	749	2	806	2
Wednesday	749	4	780	1	801	1	759	1	857	1
Thursday	784	4	833	3	752	0	702	2	788	1
Friday	1,041 †	4	869 †	1	924 †	4	791 †	2	871 †	4
Saturday	752	3	760	2	728	1	751	2	734	0
Sunday	704	5	651	4	676	5	629	4	666	2
Total	5,513	26	5,556	16	5,302	16	5,092	17	5,492	14

Note: † Indicates that the highest number of total crashes reported in the 5-year period occurred on the same day of the week

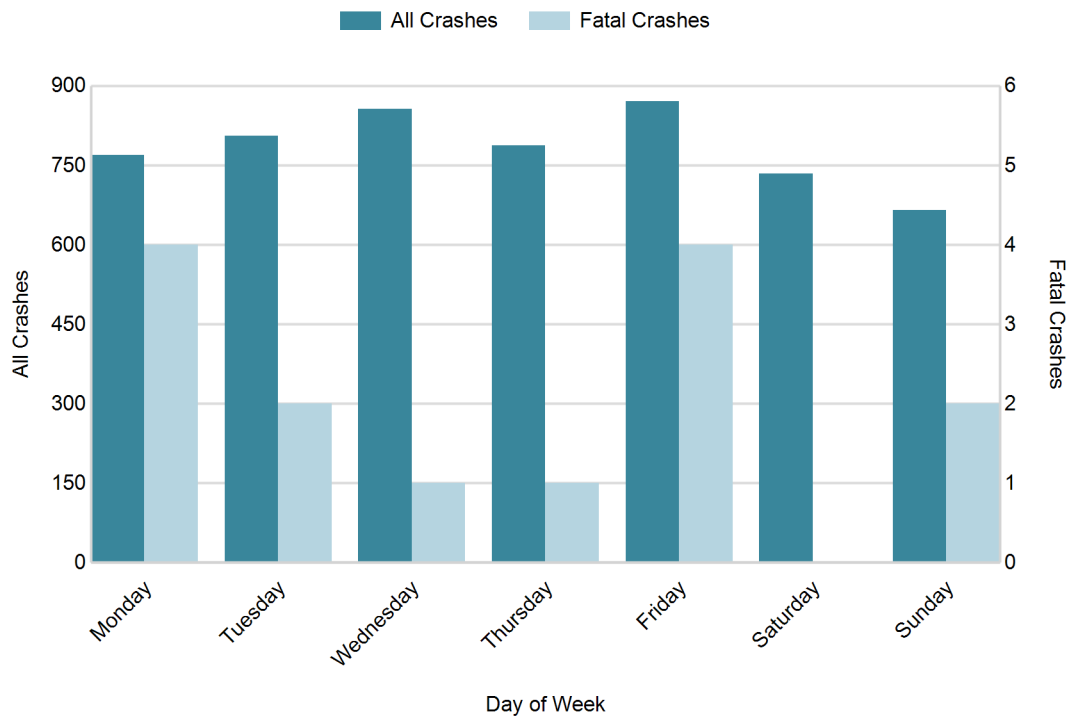
2016 Crashes by Month



2016 - Crashes by Day of Week

Day	All Crashes		Fatal Crashes		Injury Crashes			PDO Crashes
	Number	% of Total	Number	% of Fatal	A	B	C	Number
Monday	770	14.0	4	28.6	15	48	55	648
Tuesday	806	14.7	2	14.3	15	30	64	695
Wednesday	857	15.6	1	7.1	14	38	68	736
Thursday	788	14.3	1	7.1	16	31	58	682
Friday	871	15.9	4	28.6	23	42	70	732
Saturday	734	13.4	0	0.0	25	46	49	614
Sunday	666	12.1	2	14.3	28	34	40	562
Total	5,492	100.0	14	100.0	136	269	404	4,669

2016 Day of Week and Severity

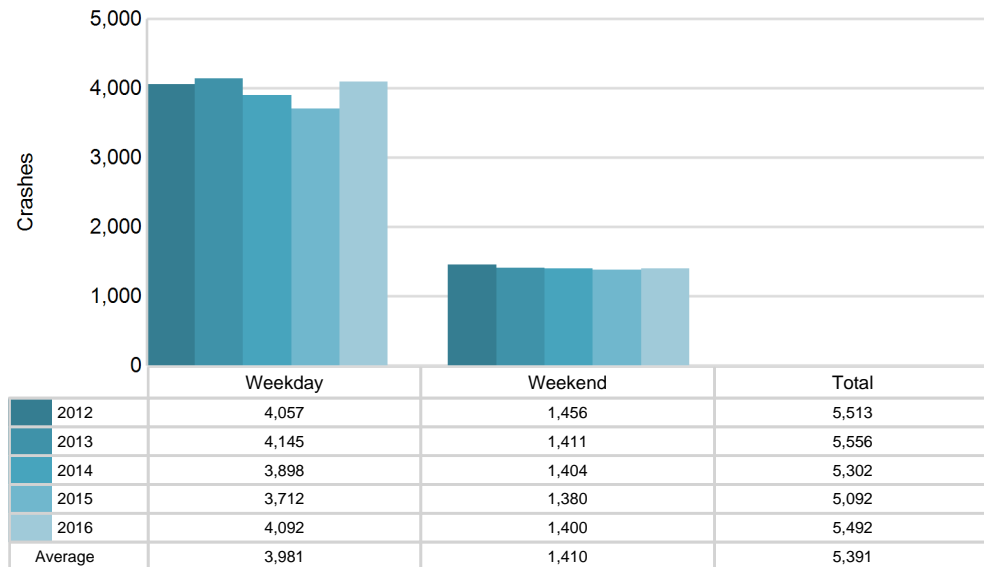


MSP Post 64 - Lakeview (continued)

5-Year Trend - Crashes by Weekday and Weekend

Portion of Week	2012		2013		2014		2015		2016	
	Total Crashes	Fatal Crashes	Total Crashes	Fatal Crashes	Total Crashes	Fatal Crashes	Total Crashes	Fatal Crashes	Total Crashes	Fatal Crashes
Weekday	4,057	18	4,145	10	3,898	10	3,712	11	4,092	12
Weekend	1,456	8	1,411	6	1,404	6	1,380	6	1,400	2
Total	5,513	26	5,556	16	5,302	16	5,092	17	5,492	14

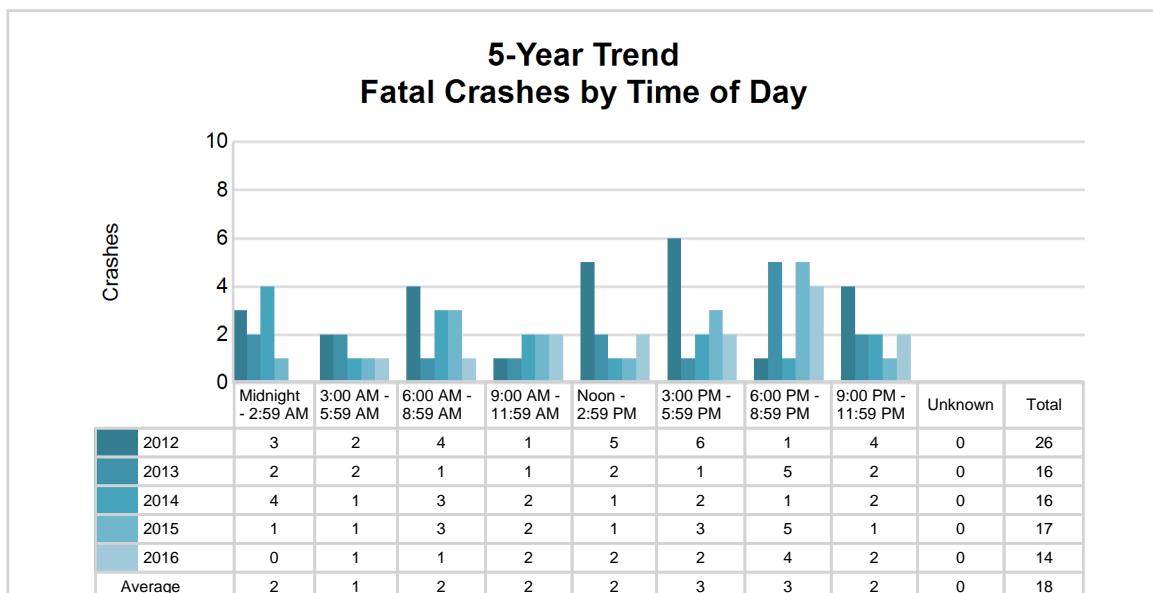
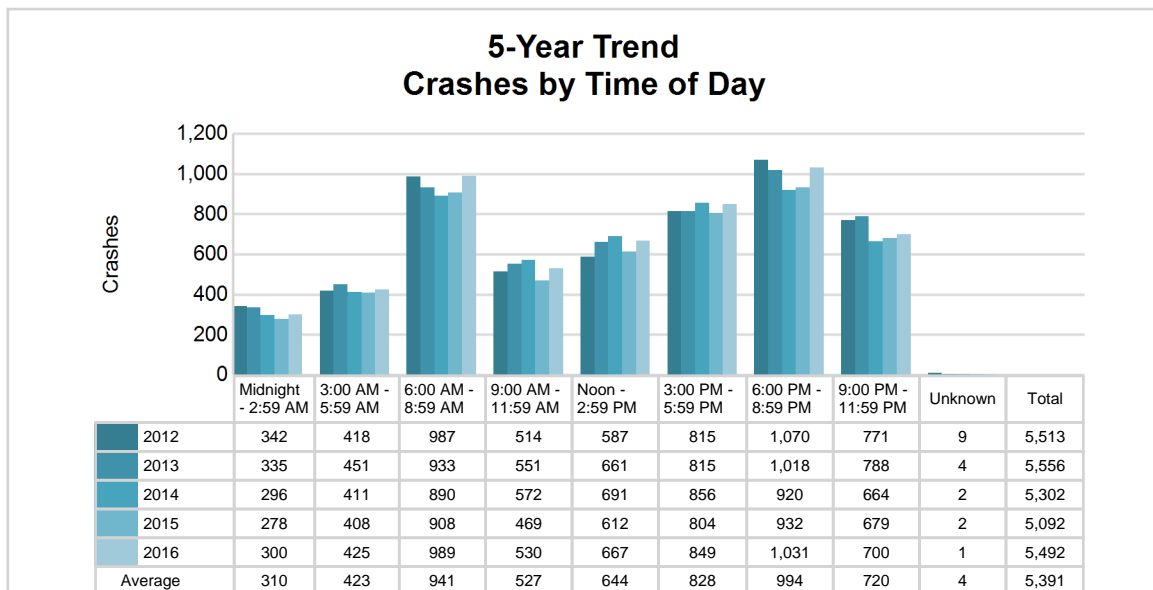
5-Year Crash Trends by Weekday (Monday - Friday) and Weekend (Saturday & Sunday)



5-Year Trend - Crashes by Time of Day

Time of Day	2012		2013		2014		2015		2016	
	Total Crashes	Fatal Crashes	Total Crashes	Fatal Crashes	Total Crashes	Fatal Crashes	Total Crashes	Fatal Crashes	Total Crashes	Fatal Crashes
Midnight - 2:59 AM	342	3	335	2	296	4	278	1	300	0
3:00 AM - 5:59 AM	418	2	451	2	411	1	408	1	425	1
6:00 AM - 8:59 AM	987	4	933	1	890	3	908	3	989	1
9:00 AM - 11:59 AM	514	1	551	1	572	2	469	2	530	2
Noon - 2:59 PM	587	5	661	2	691	1	612	1	667	2
3:00 PM - 5:59 PM	815	6	815	1	856	2	804	3	849	2
6:00 PM - 8:59 PM	1,070 †	1	1,018 †	5	920 †	1	932 †	5	1,031 †	4
9:00 PM - 11:59 PM	771	4	788	2	664	2	679	1	700	2
Unknown	9	0	4	0	2	0	2	0	1	0
Total	5,513	26	5,556	16	5,302	16	5,092	17	5,492	14

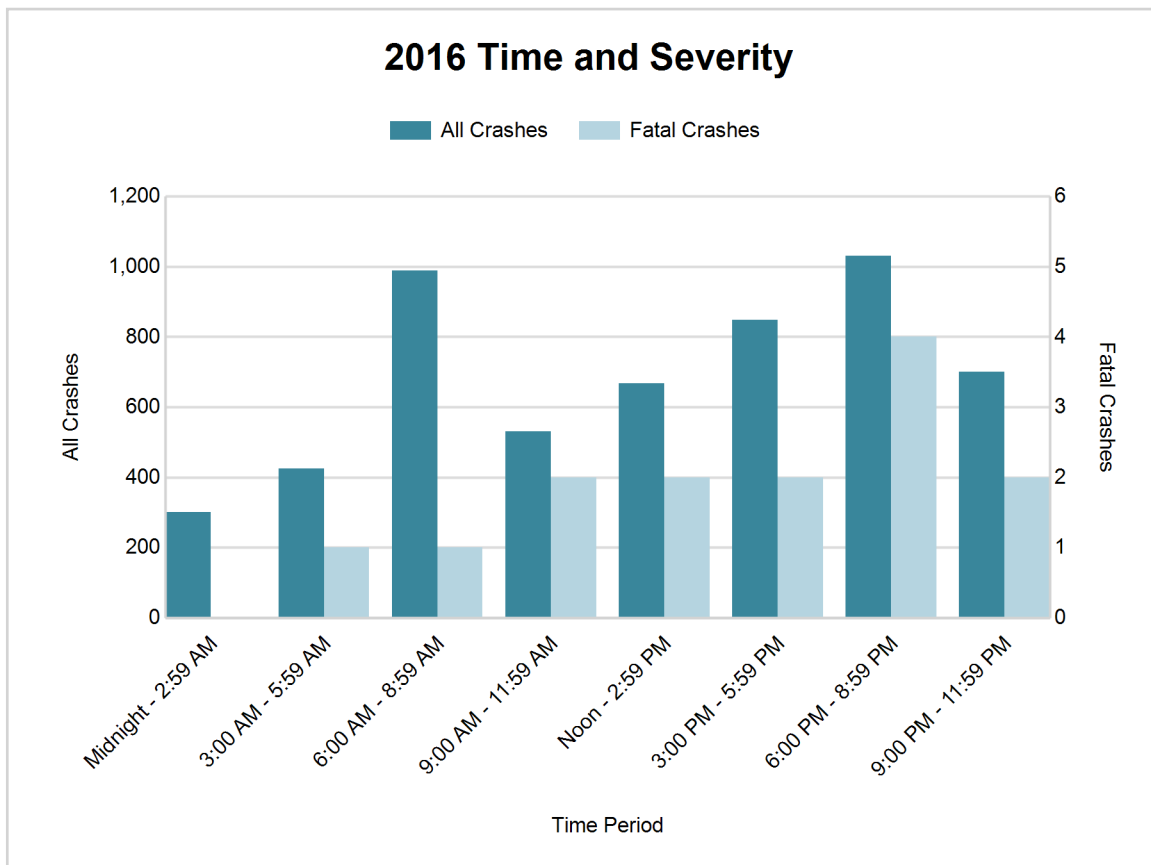
Note: † Indicates that the highest number of total crashes reported in the 5-year period occurred in the same time period



MSP Post 64 - Lakeview (continued)

2016 - Time and Severity

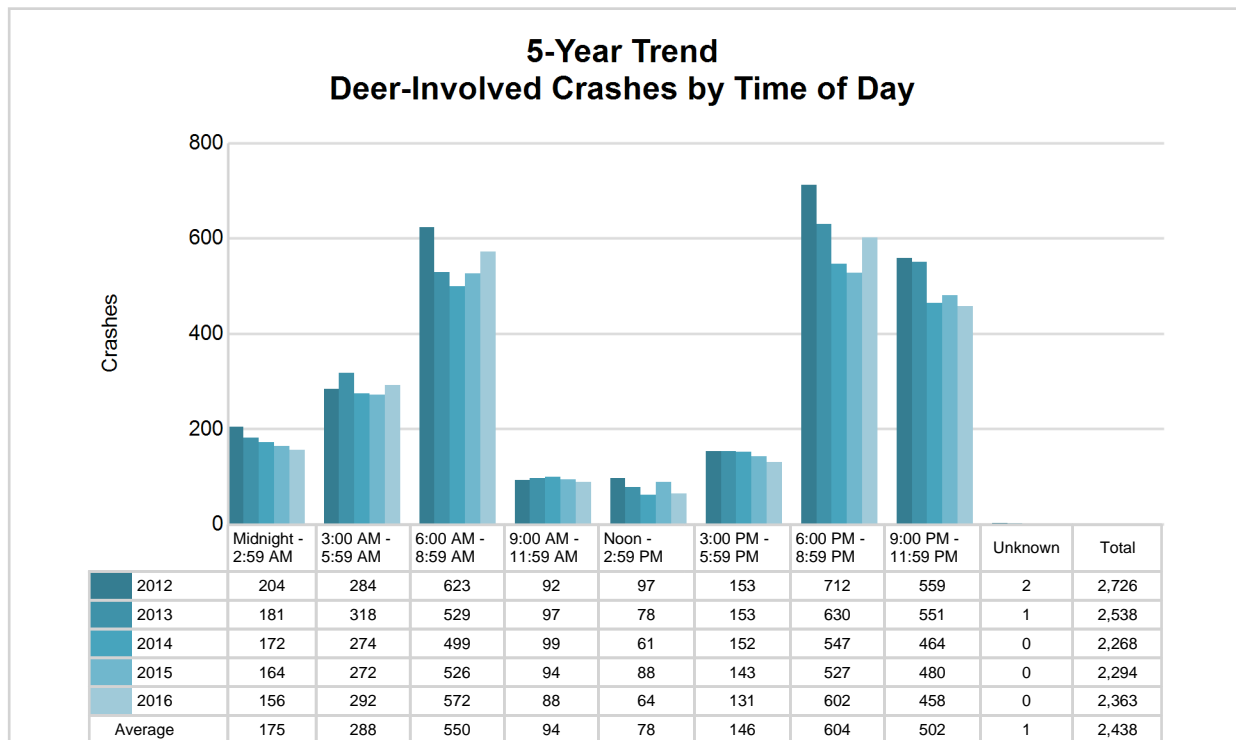
Time of Day	All Crashes		Fatal Crashes		Injury Crashes			PDO Crashes
	Number	% of Total	Number	% of Fatal	A	B	C	Number
Midnight - 2:59 AM	300	5.5	0	0.0	5	18	14	263
3:00 AM - 5:59 AM	425	7.7	1	7.1	9	15	12	388
6:00 AM - 8:59 AM	989	18.0	1	7.1	10	32	59	887
9:00 AM - 11:59 AM	530	9.7	2	14.3	14	31	60	423
Noon - 2:59 PM	667	12.1	2	14.3	24	66	90	485
3:00 PM - 5:59 PM	849	15.5	2	14.3	32	54	90	671
6:00 PM - 8:59 PM	1,031	18.8	4	28.6	20	31	50	926
9:00 PM - 11:59 PM	700	12.7	2	14.3	22	22	28	626
Unknown	1	0.0	0	0.0	0	0	1	0
Total	5,492	100.0	14	100.0	136	269	404	4,669

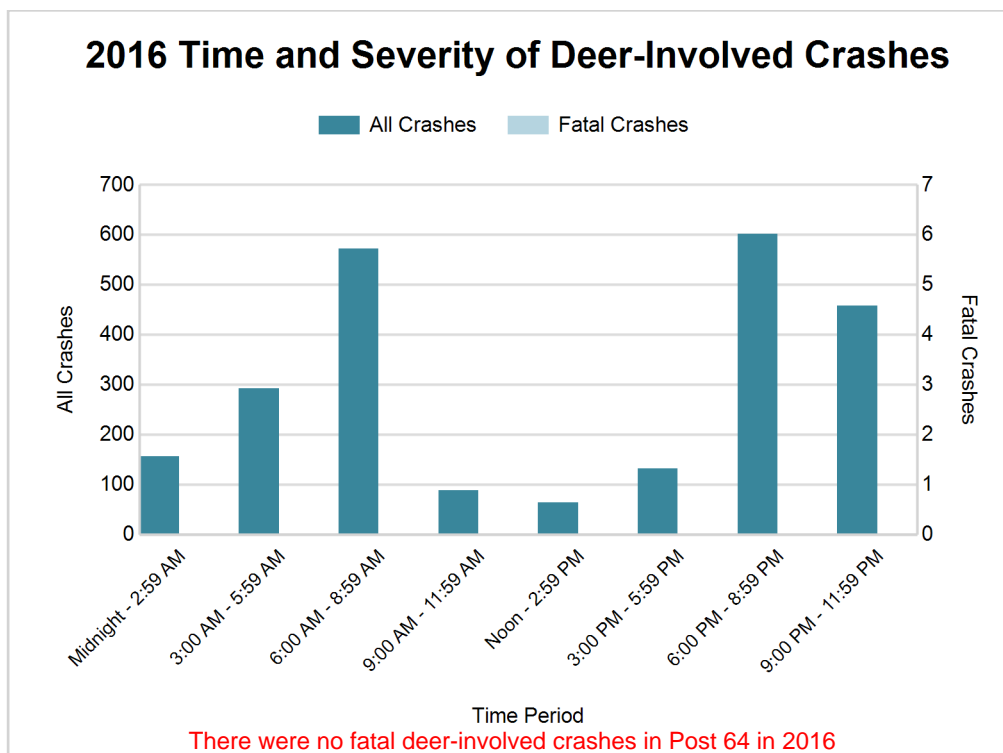


5-Year Trend - Deer-Involved Crashes by Time of Day

Time of Day	2012		2013		2014		2015		2016	
	Total Crashes	Fatal Crashes	Total Crashes	Fatal Crashes	Total Crashes	Fatal Crashes	Total Crashes	Fatal Crashes	Total Crashes	Fatal Crashes
Midnight - 2:59 AM	204	0	181	0	172	0	164	0	156	0
3:00 AM - 5:59 AM	284	0	318	0	274	0	272	0	292	0
6:00 AM - 8:59 AM	623	0	529	0	499	0	526	0	572	0
9:00 AM - 11:59 AM	92	0	97	0	99	0	94	0	88	0
Noon - 2:59 PM	97	0	78	0	61	0	88	0	64	0
3:00 PM - 5:59 PM	153	0	153	0	152	0	143	0	131	0
6:00 PM - 8:59 PM	712 †	0	630 †	0	547 †	0	527 †	0	602 †	0
9:00 PM - 11:59 PM	559	0	551	0	464	0	480	0	458	0
Unknown	2	0	1	0	0	0	0	0	0	0
Total	2,726	0	2,538	0	2,268	0	2,294	0	2,363	0

Note: † Indicates that the highest number of total crashes reported in the 5-year period occurred in the same time period





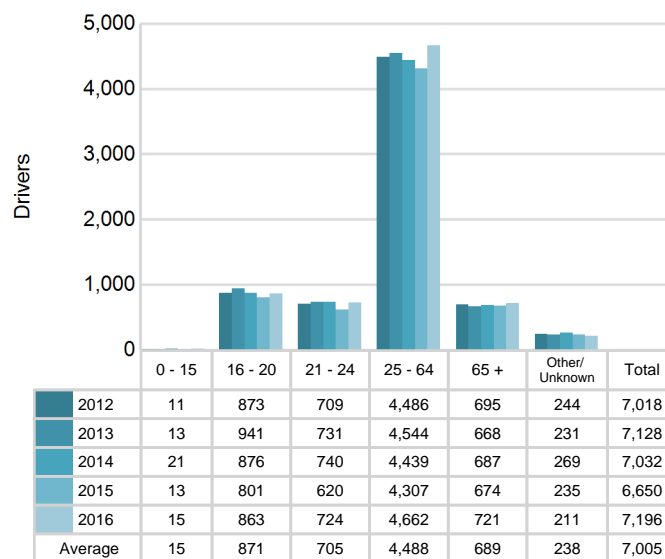
2016 - Reported Motor Vehicle Crashes by County

County	Crashes											Persons	
	Total	Fatal	Injury	Property Damage	Inter-state	US Route	State Route	Local Street	Alcohol-Involved	Drug-Involved	Deer-Involved	Fatalities	Injuries
Gratiot	1,688	2	203	1,483	0	408	306	974	38	19	917	2	290
Ionia	1,663	7	260	1,396	346	0	524	791	44	25	471	7	370
Montcalm	2,141	5	346	1,790	0	136	743	1,257	81	14	975	6	464
Total	5,492	14	809	4,669	346	544	1,573	3,022	163	58	2,363	15	1,124

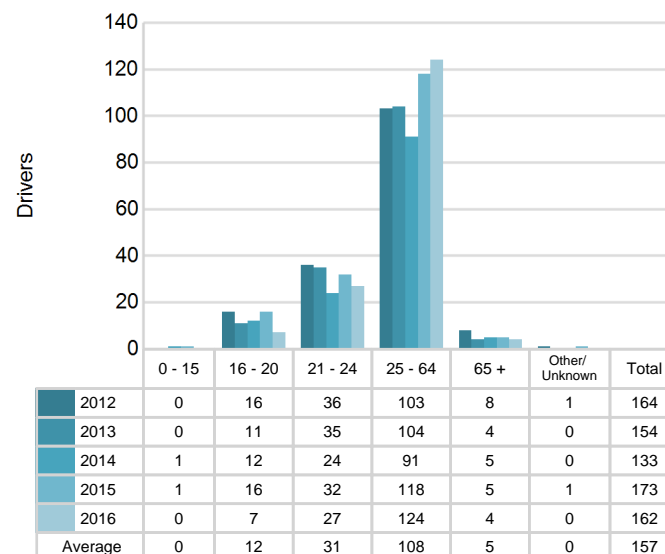
5-Year Trend - Drivers in Crashes Coded Drinking by Driver Age

Driver Age	2012		2013		2014		2015		2016	
	Total Drivers in Crashes	Total Drivers Coded Drinking	Total Drivers in Crashes	Total Drivers Coded Drinking	Total Drivers in Crashes	Total Drivers Coded Drinking	Total Drivers in Crashes	Total Drivers Coded Drinking	Total Drivers in Crashes	Total Drivers Coded Drinking
0 - 15	11	0	13	0	21	1	13	1	15	0
16 - 20	873	16	941	11	876	12	801	16	863	7
21 - 24	709	36	731	35	740	24	620	32	724	27
25 - 64	4,486	103	4,544	104	4,439	91	4,307	118	4,662	124
65 +	695	8	668	4	687	5	674	5	721	4
Unknown	244	1	231	0	269	0	235	1	211	0
Total	7,018	164	7,128	154	7,032	133	6,650	173	7,196	162

5-Year Trend Total Drivers in Crashes by Age



5-Year Trend Total Drivers Coded Drinking by Age



2016 - Bodily Alcohol Concentration (BAC) Results Among All Vehicle Drivers in Alcohol-Involved Crashes by Age

Age Group	Drivers				BAC Result Range for Drivers Coded Drinking				
	Total Drivers in Alcohol-Involved Crashes	Total Drivers Tested in all Crashes	Total Drivers Coded Drinking, Tested	Total Drivers Coded Drinking	BAC = 0.00	BAC 0.01 g/dL to 0.07 g/dL	BAC 0.08 g/dL to 0.16 g/dL	BAC 0.17 g/dL and Above	BAC Not Reported
0 - 15	0	1	0	0	0	0	0	0	0
16 - 20	7	16	7	7	0	2	3	1	1
21 - 24	31	33	23	27	0	3	7	6	11
25 - 64	148	130	95	124	4	8	35	26	51
65 +	7	7	4	4	0	1	2	0	1
Unknown	5	1	0	0	0	0	0	0	0
Total	198	188	129	162	4	14	47	33	64

Notes: BAC measured in grams (g) per deciliter (dL).

BAC may not be reported if drivers are not tested or if the results are not available immediately (as in the case of a blood test).

A driver may be coded by the officer as drinking even though no test is administered.

Alcohol-Involved Crashes

In 2016, there were 198 drivers in alcohol-involved crashes; 162 (81.8%) of those drivers were coded as had-been-drinking by the officer on the crash form.

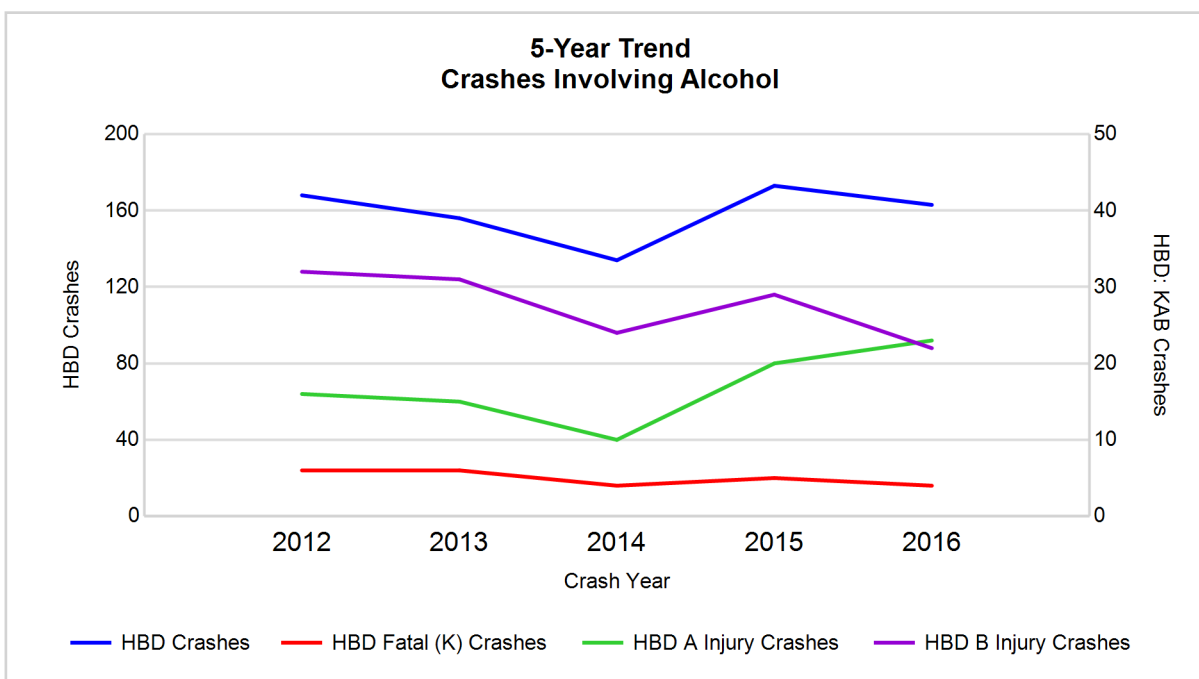
- 80 (49.4%) of the 162 drivers had a blood alcohol concentration (BAC) of 0.08 g/dL (grams per deciliter) or greater, and 33 (41.3%) of the 80 drivers had a BAC at or above 0.17 g/dL.
- 129 (79.6%) of the 162 drivers were coded as had-been-drinking and were tested for alcohol consumption.

5-Year Trend - Crashes Involving Alcohol

Year	All Crashes	HBD Crashes	% HBD	Fatal Crashes	HBD Fatal Crashes	% HBD	A Injury Crashes	HBD A Injury Crashes	% HBD	B Injury Crashes	HBD B Injury Crashes	% HBD
2012	5,513	168	3.0	26	6	23.1	125	16	12.8	232	32	13.8
2013	5,556	156	2.8	16	6	37.5	107	15	14.0	239	31	13.0
2014	5,302	134	2.5	16	4	25.0	95	10	10.5	242	24	9.9
2015	5,092	173	3.4	17	5	29.4	117	20	17.1	238	29	12.2
2016	5,492	163	3.0	14*	4	28.6	136**	23**	16.9	269**	22*	8.2*

Note: * Indicates that the most recent year is the lowest number or percentage reported in the 5-year period in that column

** Indicates that the most recent year is the highest number or percentage reported in the 5-year period in that column

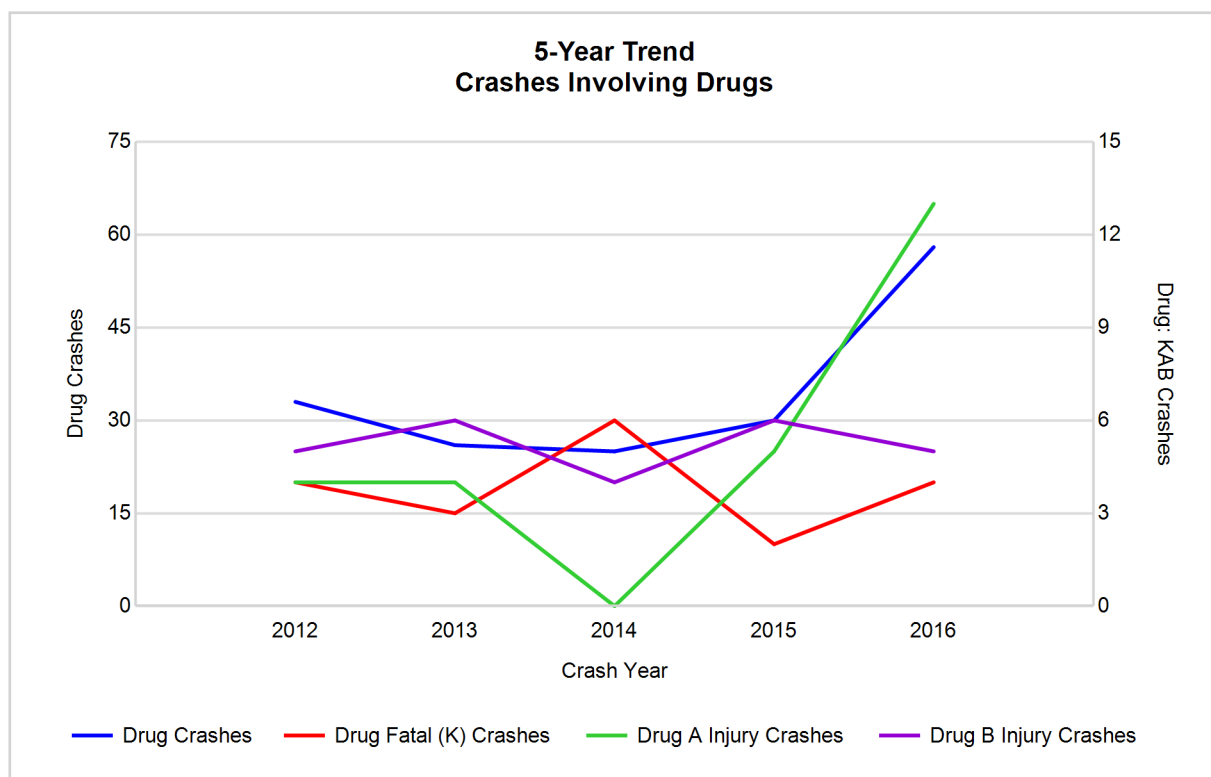


Note: Had-Been-Drinking (HBD)

5-Year Trend - Crashes Involving Drugs

Year	All Crashes	Drug Crashes	% Drug	Fatal Crashes	Drug Fatal Crashes	% Drug	A Injury Crashes	Drug A Injury Crashes	% Drug	B Injury Crashes	Drug B Injury Crashes	% Drug
2012	5,513	33	0.6	26	4	15.4	125	4	3.2	232	5	2.2
2013	5,556	26	0.5	16	3	18.8	107	4	3.7	239	6	2.5
2014	5,302	25	0.5	16	6	37.5	95	0	0.0	242	4	1.7
2015	5,092	30	0.6	17	2	11.8	117	5	4.3	238	6	2.5
2016	5,492	58**	1.1**	14*	4	28.6	136**	13**	9.6**	269**	5	1.9

Note: * Indicates that the most recent year is the lowest number or percentage reported in the 5-year period in that column
 ** Indicates that the most recent year is the highest number or percentage reported in the 5-year period in that column

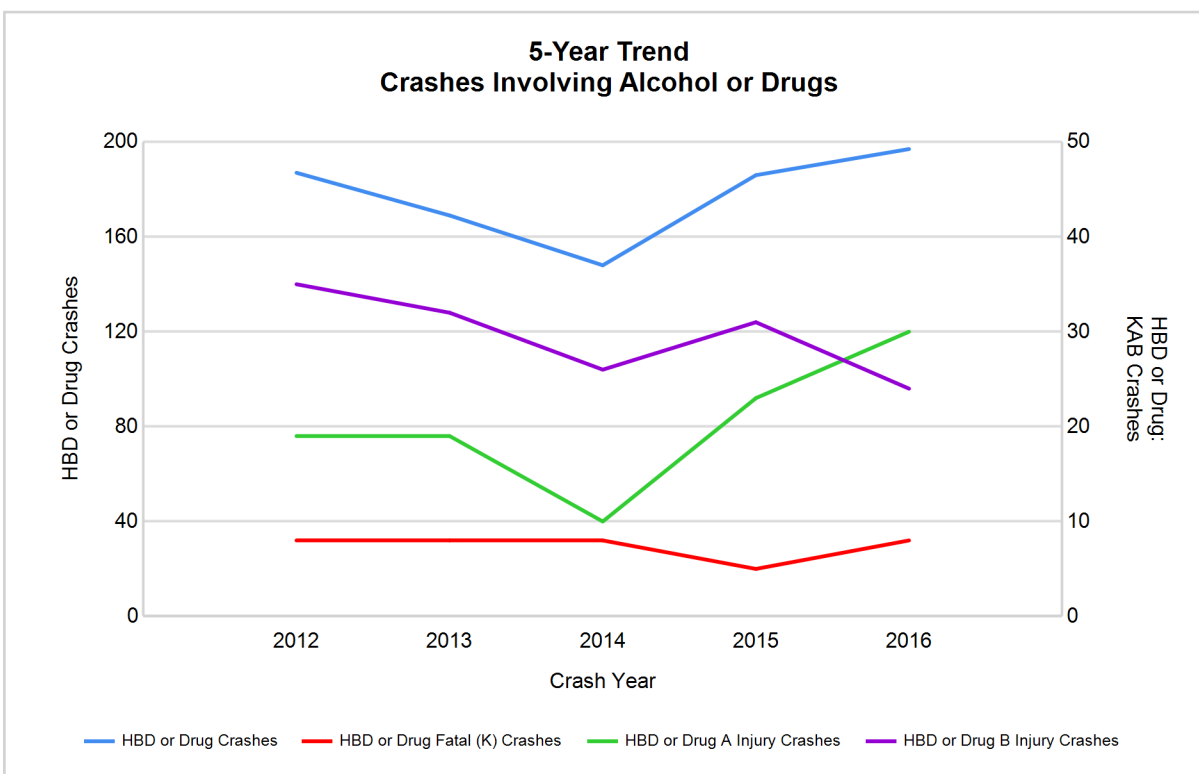


5-Year Trend - Crashes Involving Alcohol or Drugs

Year	All Crashes	HBD or Drug Crashes	% HBD or Drug	Fatal Crashes	HBD or Drug Fatal Crashes	% HBD or Drug	A Injury Crashes	HBD or Drug A Injury Crashes	% HBD or Drug	B Injury Crashes	HBD or Drug B Injury Crashes	% HBD or Drug
2012	5,513	187	3.4	26	8	30.8	125	19	15.2	232	35	15.1
2013	5,556	169	3.0	16	8	50.0	107	19	17.8	239	32	13.4
2014	5,302	148	2.8	16	8	50.0	95	10	10.5	242	26	10.7
2015	5,092	186	3.7	17	5	29.4	117	23	19.7	238	31	13.0
2016	5,492	197**	3.6	14*	8	57.1**	136**	30**	22.1**	269**	24*	8.9*

Note: * Indicates that the most recent year is the lowest number or percentage reported in the 5-year period in that column

** Indicates that the most recent year is the highest number or percentage reported in the 5-year period in that column



Note: Had-Been-Drinking (HBD)

MSP Post 64 - Lakeview (continued)

13

2016 - Restraints Worn Among Vehicle Drivers and Injured Passengers by Vehicle Type

Vehicle Type	Total Occupants			Fatalities			A - Suspected Serious			B - Suspected Minor			C - Possible Injury			No Injury		
	Total	Used Restraint	%	Total	Used Restraint	%	Total	Used Restraint	%	Total	Used Restraint	%	Total	Used Restraint	%	Total	Used Restraint	%
Passenger car, SUV, van	5,699	5,377	94.3	10	7	70.0	117	92	78.6	234	215	91.9	491	470	95.7	4,734	4,590	97.0
Motor home	46	44	95.7	0	0	0.0	0	0	0.0	0	0	0.0	3	3	100.0	42	41	97.6
Pickup truck	1,357	1,254	92.4	1	0	0.0	17	11	64.7	57	50	87.7	83	76	91.6	1,166	1,117	95.8
Small truck under 10,000 lbs. GVWR	40	38	95.0	0	0	0.0	1	1	100.0	1	1	100.0	3	3	100.0	35	33	94.3
Motorcycle	80	42	52.5	3	0	0.0	19	6	31.6	33	19	57.6	13	10	76.9	12	7	58.3
Moped / goped	5	1	20.0	0	0	0.0	2	1	50.0	2	0	0.0	1	0	0.0	0	0	0.0
Go-cart / golf cart	0	0	0.0	0	0	0.0	0	0	0.0	0	0	0.0	0	0	0.0	0	0	0.0
Snowmobile	0	0	0.0	0	0	0.0	0	0	0.0	0	0	0.0	0	0	0.0	0	0	0.0
Off-Road Vehicle - ORV / All-Terrain Vehicle - ATV	19	5	26.3	0	0	0.0	9	3	33.3	5	2	40.0	0	0	0.0	5	0	0.0
Other	36	20	55.6	0	0	0.0	0	0	0.0	4	3	75.0	1	0	0.0	29	17	58.6
Truck/bus over 10,000 lbs.	166	157	94.6	0	0	0.0	0	0	0.0	5	3	60.0	6	5	83.3	151	149	98.7
Unknown	60	0	0.0	0	0	0.0	0	0	0.0	0	0	0.0	0	0	0.0	3	0	0.0
Total	7,508	6,938	92.4	14	7	50.0	165	114	69.1	341	293	85.9	601	567	94.3	6,177	5,954	96.4

Note: Restraint Use includes shoulder belt only used, lap belt only used, both lap and shoulder belts used, child restraint used, restraint failure, and helmet worn.

2016 - Restraints Worn Among Vehicle Drivers and Injured Passengers by Age

Age Group	Total Occupants			Fatalities			A - Suspected Serious			B - Suspected Minor			C - Possible Injury			No Injury		
	Total	Used Restraint	%	Total	Used Restraint	%	Total	Used Restraint	%	Total	Used Restraint	%	Total	Used Restraint	%	Total	Used Restraint	%
0 - 15	90	86	95.6	0	0	0.0	8	7	87.5	19	18	94.7	53	53	100.0	9	8	88.9
16 - 20	915	877	95.8	0	0	0.0	22	17	77.3	62	56	90.3	103	95	92.2	728	709	97.4
21 - 24	752	712	94.7	0	0	0.0	21	17	81.0	42	34	81.0	75	69	92.0	613	592	96.6
25 - 64	4,784	4,535	94.8	8	4	50.0	95	59	62.1	183	151	82.5	302	284	94.0	4,186	4,035	96.4
65 +	756	728	96.3	6	3	50.0	19	14	73.7	35	34	97.1	68	66	97.1	626	610	97.4
Unknown	211	0	0.0	0	0	0.0	0	0	0.0	0	0	0.0	0	0	0.0	15	0	0.0
Total	7,508	6,938	92.4	14	7	50.0	165	114	69.1	341	293	85.9	601	567	94.3	6,177	5,954	96.4

Note: Restraint Use includes shoulder belt only used, lap belt only used, both lap and shoulder belts used, child restraint used, restraint failure, and helmet worn.

5-Year Trend - Restraint Use Among Drivers

Restraint Use	2012			2013			2014			2015			2016		
	Drivers	Fatal Drivers	Injured Drivers	Drivers	Fatal Drivers	Injured Drivers	Drivers	Fatal Drivers	Injured Drivers	Drivers	Fatal Drivers	Injured Drivers	Drivers	Fatal Drivers	Injured Drivers
No belts available	38	0	6	51	0	10	44	0	5	55	0	5	21	1	6
Shoulder belt only used	4	0	0	4	0	2	2	0	1	3	0	0	23	0	3
Lap belt only used	13	0	2	13	0	4	15	1	2	20	0	3	14	0	4
Both lap & shoulder belts used	6,403	8	606	6,554	8	628	6,425	3	619	6,074	5	615	6,581	4	659
No belts used	72	8	36	46	3	28	57	6	24	55	1	30	60	2	36
Child restraint used	0	0	0	0	0	0	0	0	0	0	0	0	0	0	0
Child restraint not used, unavailable or improper use	0	0	0	0	0	0	0	0	0	0	0	0	0	0	0
Restraint failure	0	0	0	3	0	0	1	0	0	4	0	0	2	0	0
Restraint use unknown	174	1	32	165	0	14	146	0	14	144	3	6	348	0	17
Helmet worn	55	1	47	39	1	26	51	0	39	49	1	35	45	0	38
Helmet not worn	18	1	14	24	3	15	25	1	18	25	2	21	44	3	33
Helmet use unknown	5	0	4	1	0	1	5	0	4	1	0	1	4	0	3
Uncoded & errors	236	0	3	228	0	1	261	0	1	220	0	1	54	0	0
Total	7,018	19	750	7,128	15	729	7,032	11	727	6,650	12	717	7,196	10	799

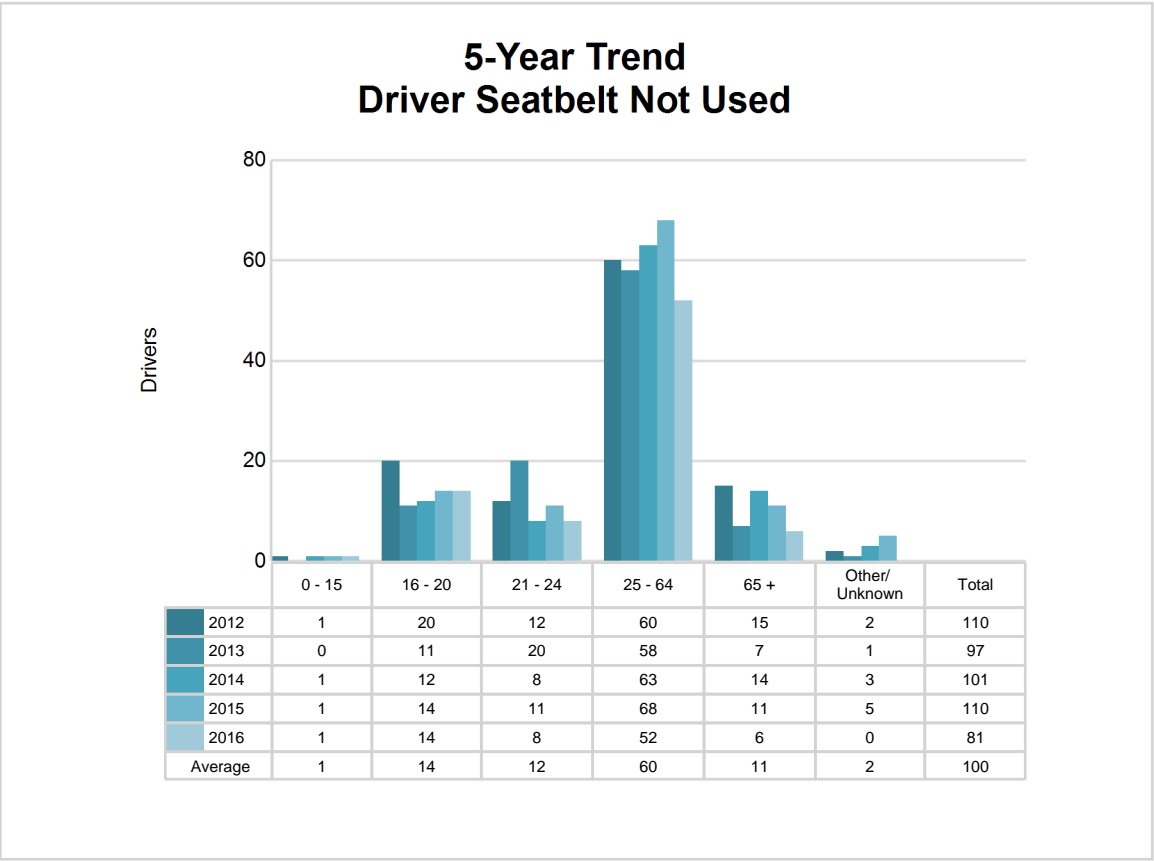
5-Year Trend - Restraint Use Among Drivers Coded Drinking

Restraint Use	2012			2013			2014			2015			2016		
	Drivers	Fatal Drivers	Injured Drivers	Drivers	Fatal Drivers	Injured Drivers	Drivers	Fatal Drivers	Injured Drivers	Drivers	Fatal Drivers	Injured Drivers	Drivers	Fatal Drivers	Injured Drivers
No belts available	0	0	0	4	0	2	1	0	0	0	0	0	2	1	1
Shoulder belt only used	0	0	0	0	0	0	0	0	0	0	0	0	0	0	0
Lap belt only used	0	0	0	0	0	0	0	0	0	0	0	0	1	0	1
Both lap & shoulder belts used	106	0	27	97	3	35	96	1	27	134	1	46	112	0	22
No belts used	19	1	14	11	1	9	6	1	4	12	1	7	14	0	12
Child restraint used	0	0	0	0	0	0	0	0	0	0	0	0	0	0	0
Child restraint not used, unavailable or improper use	0	0	0	0	0	0	0	0	0	0	0	0	0	0	0
Restraint failure	0	0	0	1	0	0	0	0	0	1	0	0	0	0	0
Restraint use unknown	28	0	11	33	0	6	23	0	8	23	2	4	16	0	7
Helmet worn	8	0	7	2	0	2	1	0	1	0	0	0	3	0	3
Helmet not worn	2	0	1	5	1	4	6	1	4	2	1	0	14	3	9
Helmet use unknown	0	0	0	0	0	0	0	0	0	1	0	1	0	0	0
Uncoded & errors	1	0	0	1	0	0	0	0	0	0	0	0	0	0	0
Total	164	1	60	154	5	58	133	3	44	173	5	58	162	4	55

5-Year Trend - Seatbelt Not Used Among Drivers by Age

Age Group	2012			2013			2014			2015			2016		
	Drivers	Fatal Drivers	Injured Drivers	Drivers	Fatal Drivers	Injured Drivers	Drivers	Fatal Drivers	Injured Drivers	Drivers	Fatal Drivers	Injured Drivers	Drivers	Fatal Drivers	Injured Drivers
0 - 15	1	0	1	0	0	0	1	1	0	1	0	1	1	0	0
16 - 20	20	0	12	11	0	6	12	0	4	14	0	4	14	0	9
21 - 24	12	1	6	20	0	9	8	0	4	11	0	4	8	0	5
25 - 64	60	4	20	58	3	21	63	3	17	68	1	22	52	1	26
65 +	15	3	3	7	0	1	14	2	4	11	0	4	6	2	2
Unknown	2	0	0	1	0	1	3	0	0	5	0	0	0	0	0
Total	110	8	42	97	3	38	101	6	29	110	1	35	81	3	42

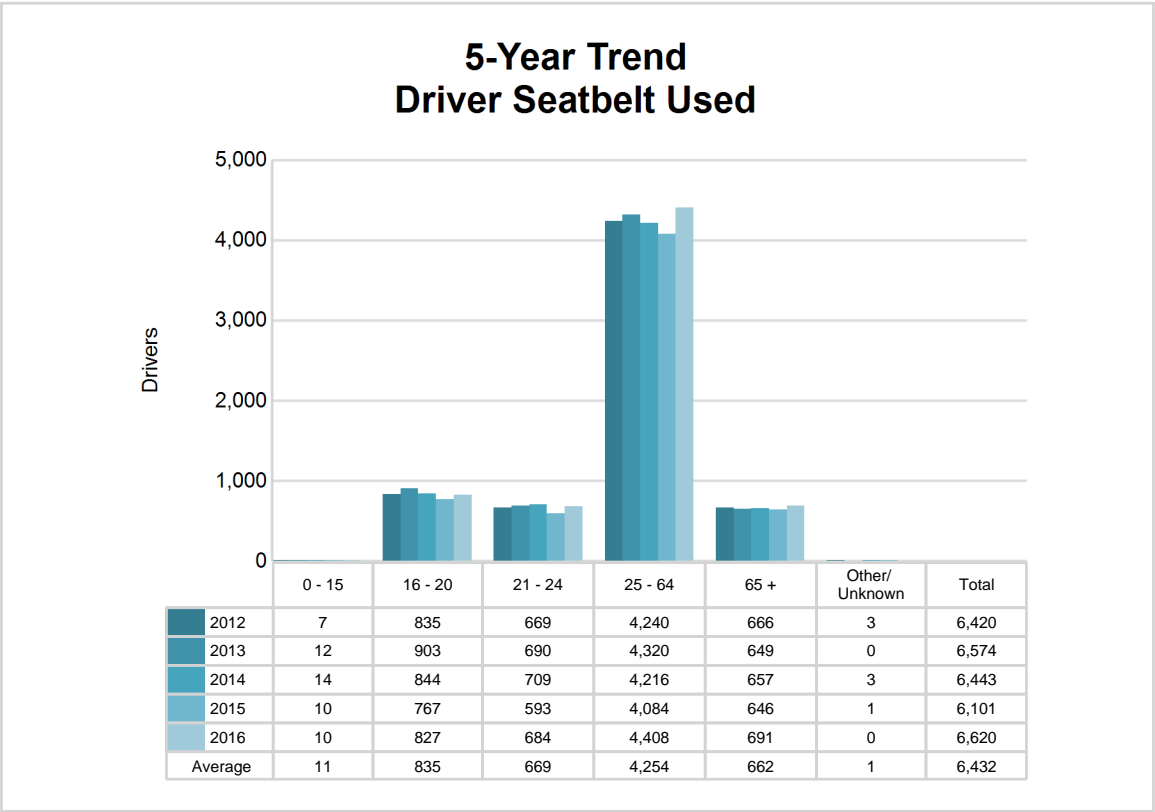
Note: Seatbelt Not Used includes no belts available or no belts used.



5-Year Trend - Seatbelt Used Among Drivers by Age

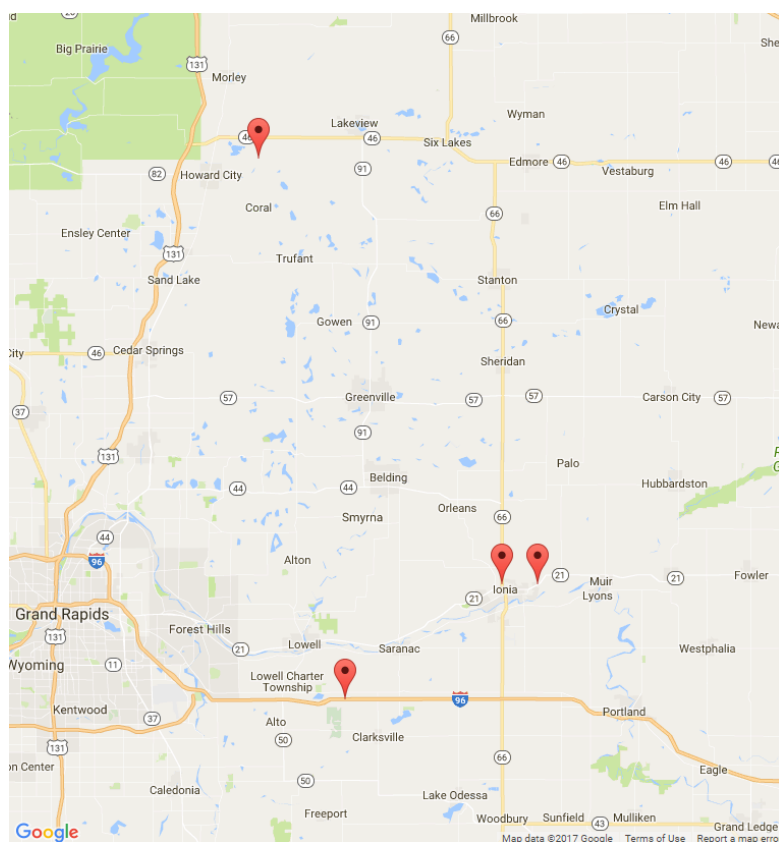
Age Group	2012			2013			2014			2015			2016		
	Drivers	Fatal Drivers	Injured Drivers	Drivers	Fatal Drivers	Injured Drivers	Drivers	Fatal Drivers	Injured Drivers	Drivers	Fatal Drivers	Injured Drivers	Drivers	Fatal Drivers	Injured Drivers
0 - 15	7	0	1	12	0	2	14	0	0	10	0	1	10	0	2
16 - 20	835	0	107	903	1	106	844	0	126	767	0	110	827	0	118
21 - 24	669	1	76	690	0	78	709	1	66	593	1	68	684	0	92
25 - 64	4,240	5	354	4,320	3	380	4,216	1	358	4,084	2	367	4,408	3	375
65 +	666	2	70	649	4	68	657	2	72	646	2	72	691	1	79
Unknown	3	0	0	0	0	0	3	0	0	1	0	0	0	0	0
Total	6,420	8	608	6,574	8	634	6,443	4	622	6,101	5	618	6,620	4	666

Note: Seatbelt Used includes shoulder belt only used, lap belt only used, both lap and shoulder belts used, and restraint failure.



5-Year Trend - Drivers in Crashes by Hazardous Action

Hazardous Action	2012		2013		2014		2015		2016	
	Total Drivers in Crashes	Drivers in Fatal Crashes	Total Drivers in Crashes	Drivers in Fatal Crashes	Total Drivers in Crashes	Drivers in Fatal Crashes	Total Drivers in Crashes	Drivers in Fatal Crashes	Total Drivers in Crashes	Drivers in Fatal Crashes
None	4,412	20	4,364	9	4,282	11	4,188	9	4,348	10
Speed too fast	812	3	956	2	837	4	590	2	814	3
Speed too slow	9	0	6	0	4	0	7	0	3	0
Failed to yield	385	2	391	3	427	0	392	3	470	2
Disregard traffic control	84	4	65	3	64	3	67	0	51	2
Drove wrong way	1	0	2	0	2	0	8	1	2	0
Drove left of center	41	4	45	1	39	3	35	2	38	0
Improper passing	30	1	30	0	35	0	22	0	38	1
Improper lane use	46	0	46	0	57	0	66	0	73	0
Improper turn	33	0	29	0	43	0	34	0	39	0
Improper/no signal	9	0	16	0	12	0	16	1	4	0
Improper backing	101	0	124	0	104	0	89	0	97	0
Unable to stop in assured clear distance	446	2	491	0	548	0	499	0	551	0
Other	182	3	185	1	184	3	218	1	220	1
Unknown	82	2	59	1	91	0	54	2	154	3
Reckless driving	30	1	41	1	25	0	32	0	27	1
Careless/negligent driving	233	2	227	2	254	0	324	2	254	1
Uncoded & errors	82	0	51	0	24	0	9	0	13	0
Total	7,018	44	7,128	23	7,032	24	6,650	23	7,196	24



The picture above represents all 2016 alcohol-involved fatal crashes in Post 64.

In 2016, there were 163 alcohol-involved crashes in Post 64:

- 4 K - Fatal Crashes
- 23 A - Suspected Serious Injury Crashes
- 22 B - Suspected Minor Injury Crashes
- 19 C - Possible Injury Crashes
- 95 O - Property Damage Only/No Injury Crashes

Office of Highway Safety Planning

Physical Address:
7150 Harris Drive
Dimondale, Michigan 48821

Mailing Address:
P.O. Box 30634
Lansing, Michigan 48909

Phone: (517) 284-3112
Fax: (517) 284-3151

Find us on the web:
MichiganTrafficCrashFacts.org

