

Michigan Traffic Crash Facts

Reporting Criteria

Please pay particular attention to the wording when interpreting the three levels of data gathered for this report.

Crash

The Crash Level analyzes data related to crash events and returns one result per crash.

Examples: Time, weather, and location.

Units

The Units Level analyzes the experience of the units in the crash and returns one result per vehicle, driver, pedestrian, bicyclist, or train.

Examples: Vehicle type, driver condition, and unit events.

People

The People Level analyzes the experience of the people involved in the crash and returns one result per occupant/person/party.

Examples: Age, injury severity, and seat belt or helmet use.

KABCO Injury Indicator:

K = Killed

A = Suspected Serious Injury

B = Suspected Minor Injury

C = Possible Injury

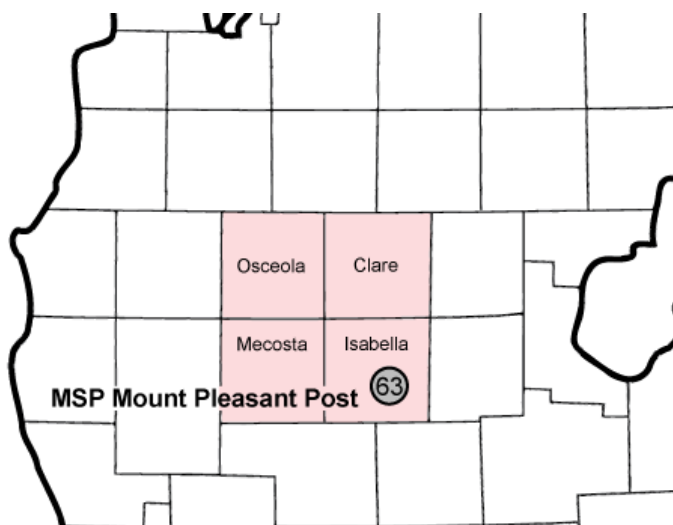
O = No Injury

Property Damage Only (PDO)

Michigan State Police (MSP) Post 63 - Mount Pleasant

2016 Traffic Crash Data & 2012-2016 5-Year Trends

Post 63 is comprised of Clare, Isabella, Mecosta, and Osceola counties. Trend tables for this report are based on those counties.



Sources:

The crashes in this report occurred on public roadways in Michigan and resulted in injuries, fatalities, or property damage (with \$1,000 as a reporting threshold). The information was gathered from Michigan Traffic Crash Report Forms (UD-10) submitted by local police departments, sheriff's offices, and the Michigan State Police. Other related information was obtained from the departments of Transportation, State, and Community Health.

This page left intentionally blank

MSP Post 63 - Mount Pleasant

- There were 7,068 crashes in Post 63 during 2016. [Page 1]
- There were 18 fatalities in 14 fatal crashes in 2016 in Post 63. [Page 1]
- A total of 1,171 injuries resulted from 863 injury crashes. [Page 1]
- There were 6,191 property damage only crashes (no fatalities or injuries). [Page 1]
- November had the highest number of crashes (913). [Pages 1-2]
- May had the highest number of fatal crashes (3), and August had the highest number of fatalities (4). [Pages 1-2]
- October had the highest number of injury crashes (93) and September had the highest number of injuries (132). [Page 1]
- November had the highest number of property damage only crashes (834). [Page 1]
- Of all vehicles involved in fatal crashes, two (8.3%) were motorcycles. [Page 1]
- Wednesday was the day of the week with the highest number of crashes (1,172), and Thursday and Saturday had the highest number of fatal crashes (4). [Pages 2-3]
- The 6:00 PM – 8:59 PM time period had the highest number of crashes (1,333). The noon – 2:59 PM and 3:00 PM – 5:59 PM time periods had the highest number of fatal crashes (3). [Pages 5-6]
- During the period from 2012 to 2016, the highest number of deer crashes occurred in 2016 (3,113). There was one fatal crash involving deer in 2016. [Pages 7-8]
- Isabella County (40.5%) had the highest number of crashes in Post 63 in 2016, followed by Mecosta County (27.7%). [Page 8]
- Clare County (44.4%) had the highest number of fatalities in Post 63 in 2016, followed by Isabella County (33.3%). [Page 8]
- The highest number of drivers in crashes (9,487) occurred during 2016 within the five-year period. The highest number of drivers coded drinking in crashes (210) occurred during 2013. [Page 9]
- A total of 168 crashes involved alcohol in 2016, which was the lowest number over the five-year period. The highest number of alcohol-involved crashes occurred in 2013, with 212. [Page 10]
- Alcohol-involved fatal crashes were the highest in 2015 during the five-year period from 2012 to 2016 at 16. [Page 10]
- A total of 52 crashes involved drugs in 2016, which was the highest during the five-year period. The numbers of fatal (2) and suspected serious injury (3) crashes involving drugs in 2016 were the lowest during the five-year period. [Page 11]
- There were 8,852 drivers wearing seatbelts and 86 drivers not wearing seatbelts in crashes in 2016. Of the 86 drivers not wearing seat belts, four (4.7%) were killed and 28 (32.6%) were injured. [Pages 14-16]
- The most common hazardous action coded for drivers in 2016 in all crashes was speed too fast (974), while the most common hazardous action coded for drivers in fatal crashes was disregard traffic control (4). [Page 17]

Post 63 Experience

In 2016:

There were 9,487 drivers involved in 7,068 motor vehicle crashes in MSP Post 63. Of those crashes, 14 were classified as fatal, resulting in 18 fatalities. An additional 1,171 persons were injured.

Post 63 experienced the highest number of motor vehicle crashes (913) in November, the highest number of fatal crashes (3) in May, and the highest number of persons killed (4) in August.

Michigan driver statistics indicate 6.7 percent of licensed drivers in Post 63 were age 16-20, and 13.7 percent of drivers in crashes were also in that age group.

2016 - Crashes and Injuries by Month

Month	Crashes				Persons	
	Total	Fatal	Injury	Property Damage Only (PDO)	Fatalities	Injuries
January	707	1	80	626	1	98
February	547	0	54	493	0	75
March	496	1	68	427	1	84
April	443	0	50	393	0	72
May	521	3	67	451	3	91
June	492	2	58	432	2	84
July	410	1	68	341	1	84
August	406	2	79	325	4	103
September	544	1	90	453	1	132
October	828	2	93	733	3	125
November	913	0	79	834	0	100
December	761	1	77	683	2	123
Total	7,068	14	863	6,191	18	1,171

2016 - Driver Statistics

Age Group	Statewide			Driver Rates	
	2016 Population	Licensed Drivers	Drivers in Crashes	Per 10k Population	Per 10k Licensed
0 - 15	27,880	705	16	5.7	227.0
16 - 20	19,370	7,256	1,303	672.7	1,795.8
21 - 24	16,842	7,757	1,246	739.8	1,606.3
25 - 64	76,531	67,216	5,588	730.2	831.3
65 +	27,348	25,243	1,055	385.8	417.9
Unknown	0	0	279	--	--
Total	167,971	108,177	9,487	564.8	877.0

2016 - Vehicles in Crashes

Vehicle Type	Motor Vehicles		Fatal Crashes		Injury Crashes	PDO Crashes
	Number of Vehicles	% of Total	Number	% of Total	Number	Number
Passenger car, SUV, van	7,289	76.8	15	62.5	982	6,292
Motor home	146	1.5	0	0.0	17	129
Pickup truck	1,645	17.3	5	20.8	237	1,403
Small truck under 10,000 lbs. GVWR	92	1.0	0	0.0	10	82
Motorcycle	56	0.6	2	8.3	43	11
Moped / goped	2	0.0	0	0.0	1	1
Go-cart / golf cart	1	0.0	0	0.0	1	0
Snowmobile	3	0.0	0	0.0	2	1
Off-Road Vehicle - ORV / All-Terrain Vehicle - ATV	23	0.2	1	4.2	18	4
Other	42	0.4	1	4.2	6	35
Truck/bus over 10,000 lbs.	133	1.4	0	0.0	24	109
Unknown	55	0.6	0	0.0	3	52
Total	9,487	100.0	24	100.0	1,344	8,119

MSP Post 63 - Mount Pleasant (continued)

5-Year Trend - Crashes by Month

Month	2012		2013		2014		2015		2016	
	Total Crashes	Fatal Crashes	Total Crashes	Fatal Crashes	Total Crashes	Fatal Crashes	Total Crashes	Fatal Crashes	Total Crashes	Fatal Crashes
January	715	1	680	4	785	0	605	0	707	1
February	611	2	646	1	546	3	507	1	547	0
March	436	2	549	0	506	1	398	0	496	1
April	372	2	432	0	394	0	411	2	443	0
May	453	4	441	3	395	4	456	0	521	3
June	478	3	477	0	474	1	457	3	492	2
July	393	1	382	5	374	4	437	7	410	1
August	360	2	416	0	384	1	362	5	406	2
September	512	4	493	1	445	1	486	3	544	1
October	780	1	729	4	751	1	778	2	828	2
November	775	1	928	1	1,079	3	867	4	913	0
December	688	0	655	2	545	2	525	0	761	1
Total	6,573	23	6,828	21	6,678	21	6,289	27	7,068	14

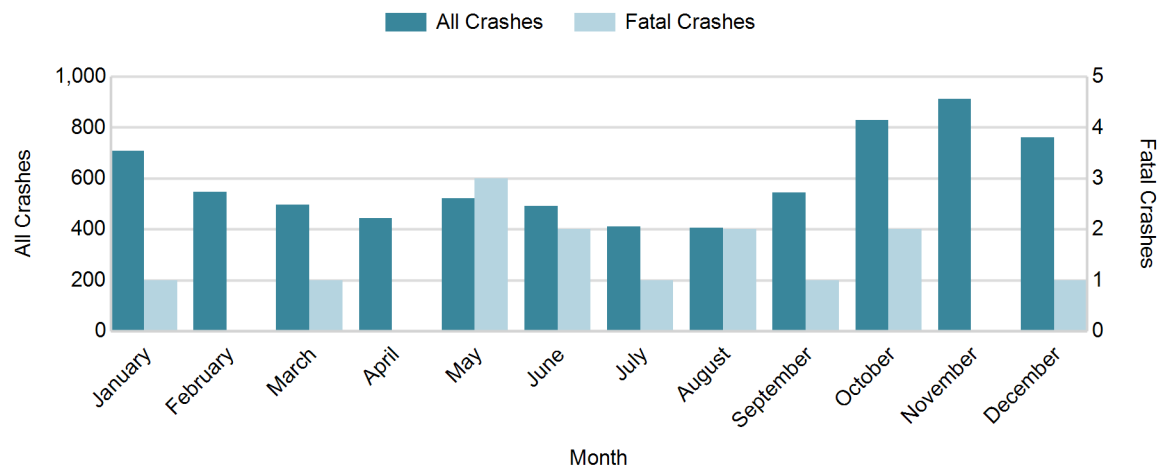
Note: † Indicates that the highest number of total crashes reported in the 5-year period occurred in the same month

5-Year Trend - Crashes by Day of Week

Day	2012		2013		2014		2015		2016	
	Total Crashes	Fatal Crashes	Total Crashes	Fatal Crashes	Total Crashes	Fatal Crashes	Total Crashes	Fatal Crashes	Total Crashes	Fatal Crashes
Monday	878	3	984	3	881	1	899	4	972	3
Tuesday	945	3	1,019	4	929	3	942	2	1,031	0
Wednesday	867	1	930	3	1,003	2	890	3	1,172	2
Thursday	1,018	2	1,108	2	970	3	913	2	1,061	4
Friday	1,175	3	1,040	3	1,207	4	968	7	1,116	1
Saturday	880	4	932	4	862	3	899	6	908	4
Sunday	810	7	815	2	826	5	778	3	808	0
Total	6,573	23	6,828	21	6,678	21	6,289	27	7,068	14

Note: † Indicates that the highest number of total crashes reported in the 5-year period occurred on the same day of the week

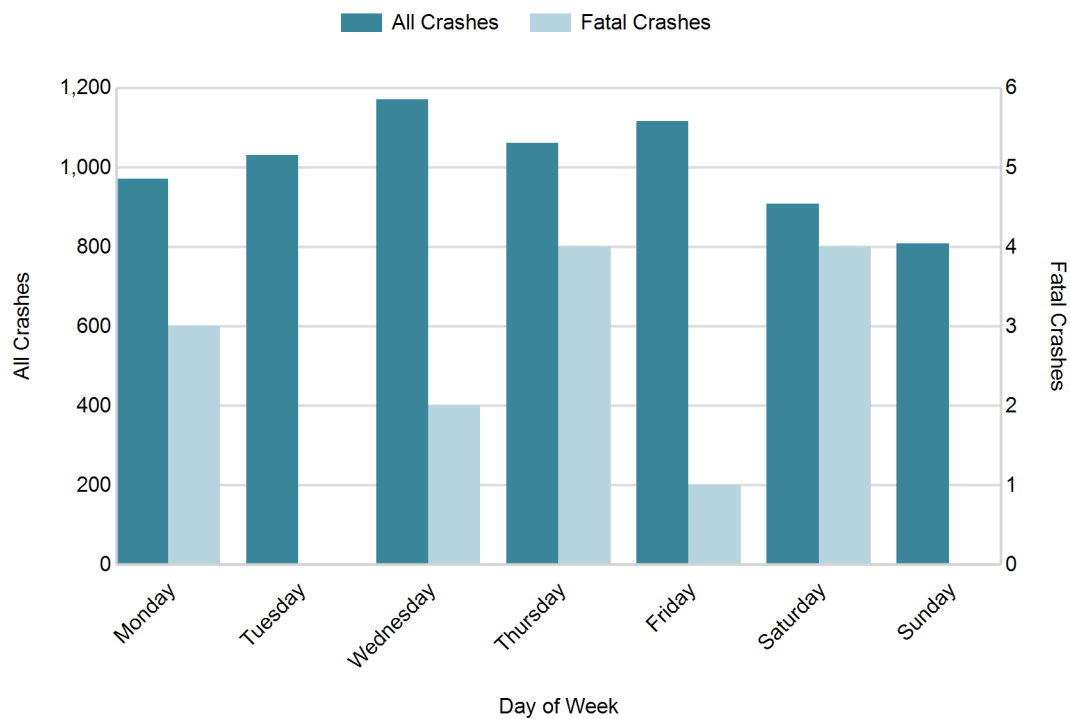
2016 Crashes by Month



2016 - Crashes by Day of Week

Day	All Crashes		Fatal Crashes		Injury Crashes			PDO Crashes
	Number	% of Total	Number	% of Fatal	A	B	C	Number
Monday	972	13.8	3	21.4	16	36	63	854
Tuesday	1,031	14.6	0	0.0	14	35	72	910
Wednesday	1,172	16.6	2	14.3	9	44	91	1,026
Thursday	1,061	15.0	4	28.6	10	35	63	949
Friday	1,116	15.8	1	7.1	14	42	73	986
Saturday	908	12.8	4	28.6	26	42	73	763
Sunday	808	11.4	0	0.0	14	33	58	703
Total	7,068	100.0	14	100.0	103	267	493	6,191

2016 Day of Week and Severity

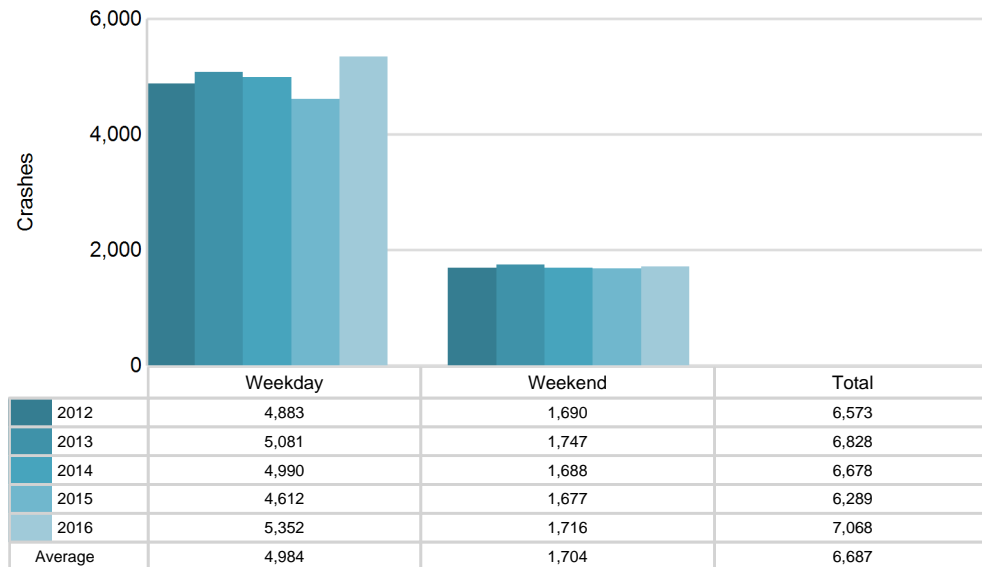


MSP Post 63 - Mount Pleasant (continued)

5-Year Trend - Crashes by Weekday and Weekend

Portion of Week	2012		2013		2014		2015		2016	
	Total Crashes	Fatal Crashes	Total Crashes	Fatal Crashes	Total Crashes	Fatal Crashes	Total Crashes	Fatal Crashes	Total Crashes	Fatal Crashes
Weekday	4,883	12	5,081	15	4,990	13	4,612	18	5,352	10
Weekend	1,690	11	1,747	6	1,688	8	1,677	9	1,716	4
Total	6,573	23	6,828	21	6,678	21	6,289	27	7,068	14

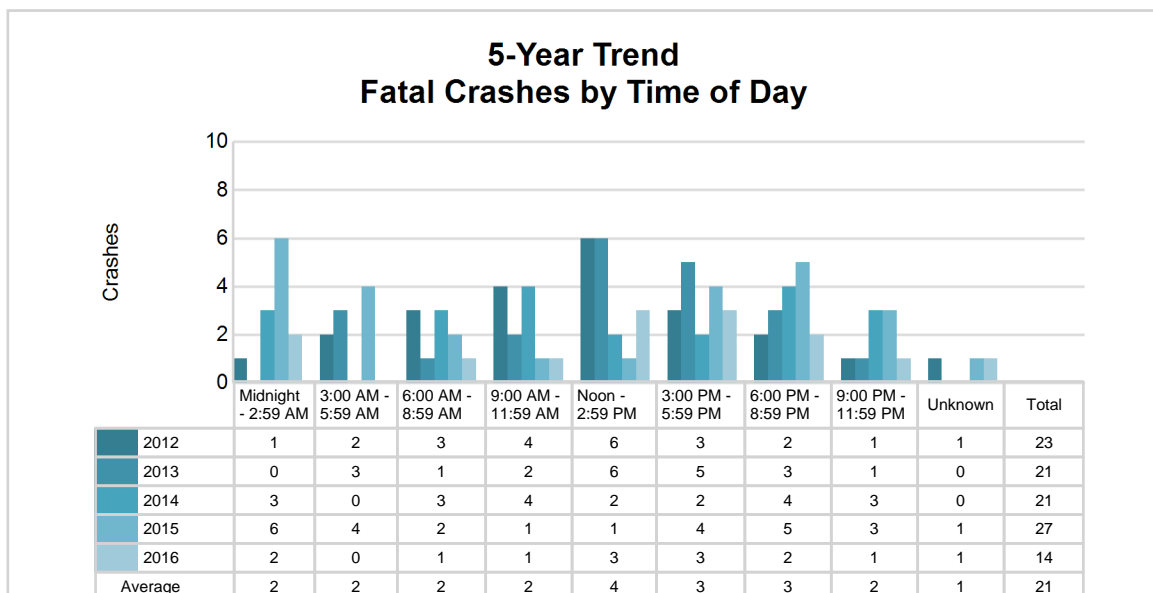
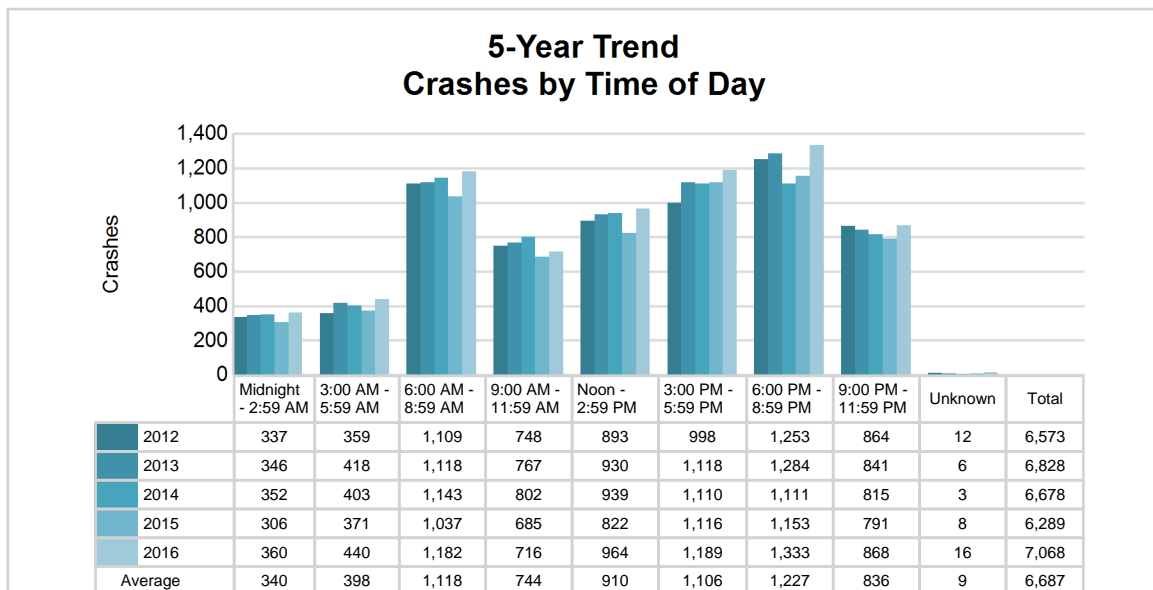
5-Year Crash Trends by Weekday (Monday - Friday) and Weekend (Saturday & Sunday)



5-Year Trend - Crashes by Time of Day

Time of Day	2012		2013		2014		2015		2016	
	Total Crashes	Fatal Crashes	Total Crashes	Fatal Crashes	Total Crashes	Fatal Crashes	Total Crashes	Fatal Crashes	Total Crashes	Fatal Crashes
Midnight - 2:59 AM	337	1	346	0	352	3	306	6	360	2
3:00 AM - 5:59 AM	359	2	418	3	403	0	371	4	440	0
6:00 AM - 8:59 AM	1,109	3	1,118	1	1,143	3	1,037	2	1,182	1
9:00 AM - 11:59 AM	748	4	767	2	802	4	685	1	716	1
Noon - 2:59 PM	893	6	930	6	939	2	822	1	964	3
3:00 PM - 5:59 PM	998	3	1,118	5	1,110	2	1,116	4	1,189	3
6:00 PM - 8:59 PM	1,253	2	1,284	3	1,111	4	1,153	5	1,333	2
9:00 PM - 11:59 PM	864	1	841	1	815	3	791	3	868	1
Unknown	12	1	6	0	3	0	8	1	16	1
Total	6,573	23	6,828	21	6,678	21	6,289	27	7,068	14

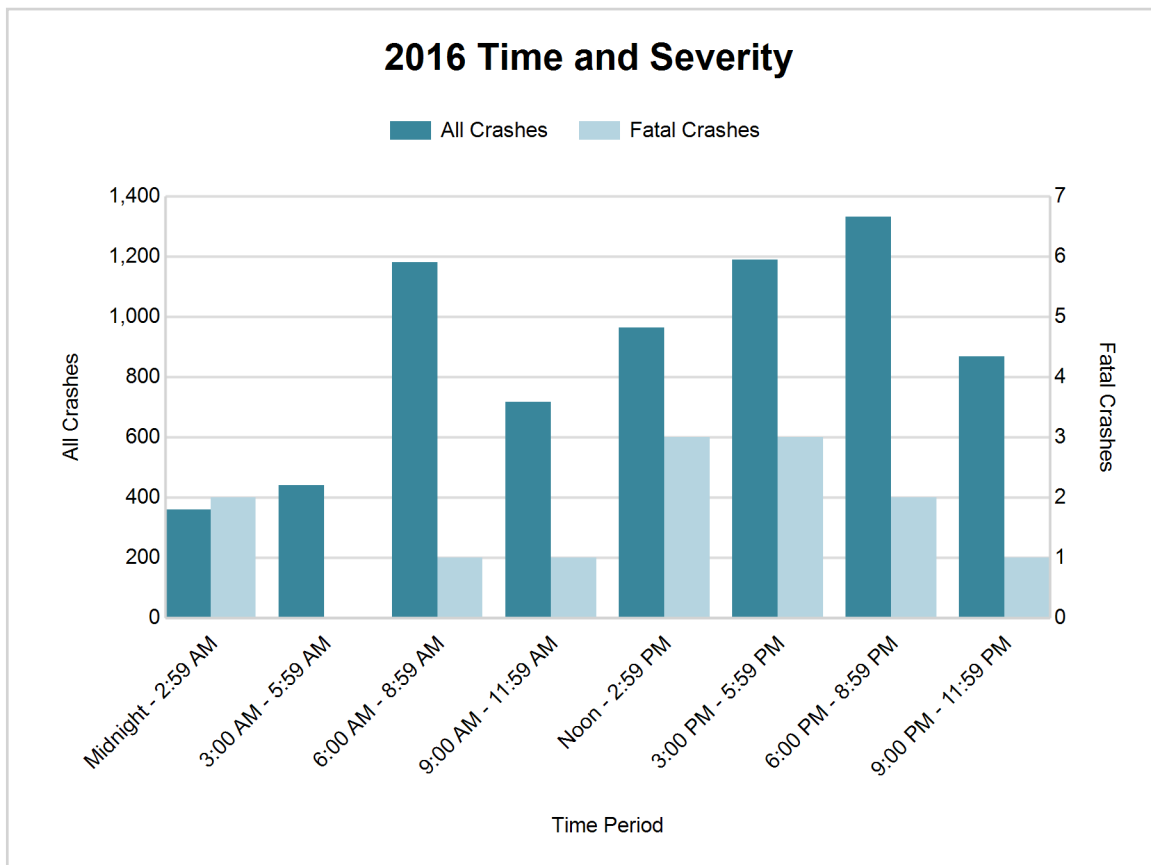
Note: † Indicates that the highest number of total crashes reported in the 5-year period occurred in the same time period



MSP Post 63 - Mount Pleasant (continued)

2016 - Time and Severity

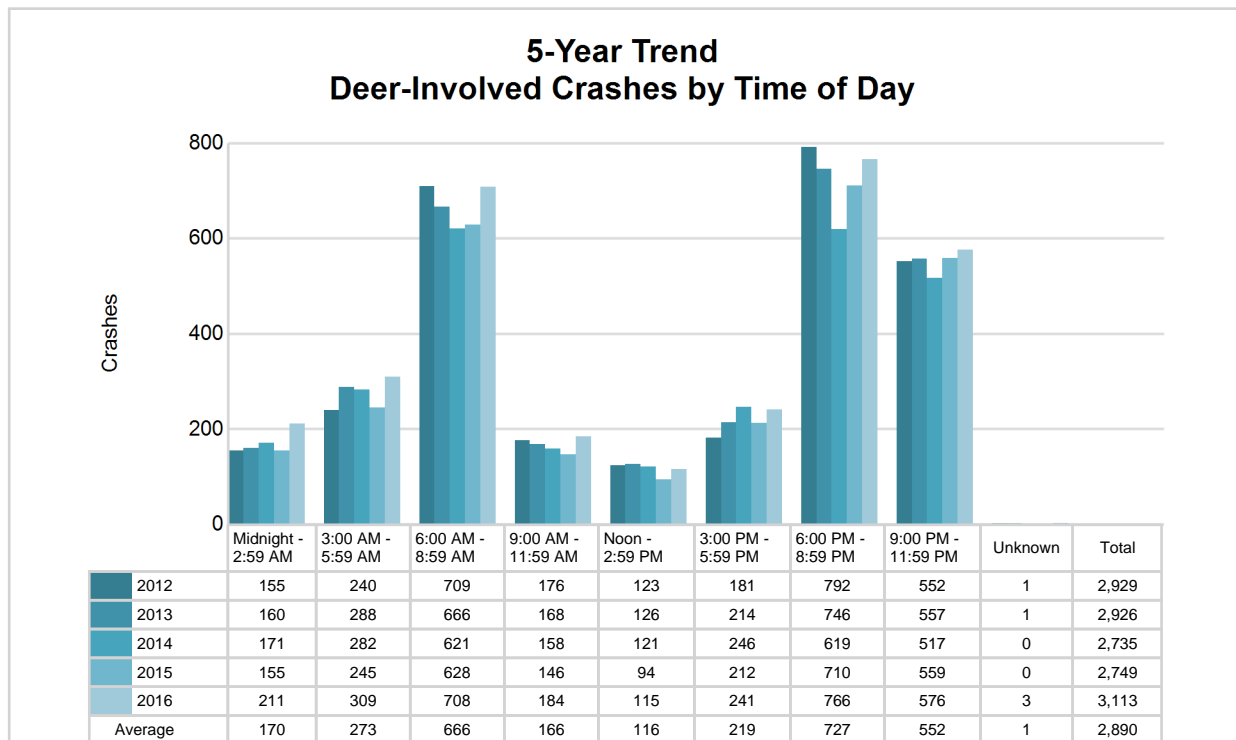
Time of Day	All Crashes		Fatal Crashes		Injury Crashes			PDO Crashes
	Number	% of Total	Number	% of Fatal	A	B	C	Number
Midnight - 2:59 AM	360	5.1	2	14.3	9	13	23	313
3:00 AM - 5:59 AM	440	6.2	0	0.0	5	10	17	408
6:00 AM - 8:59 AM	1,182	16.7	1	7.1	9	32	63	1,077
9:00 AM - 11:59 AM	716	10.1	1	7.1	8	29	63	615
Noon - 2:59 PM	964	13.6	3	21.4	19	53	111	778
3:00 PM - 5:59 PM	1,189	16.8	3	21.4	21	65	101	999
6:00 PM - 8:59 PM	1,333	18.9	2	14.3	20	38	80	1,193
9:00 PM - 11:59 PM	868	12.3	1	7.1	12	24	35	796
Unknown	16	0.2	1	7.1	0	3	0	12
Total	7,068	100.0	14	100.0	103	267	493	6,191



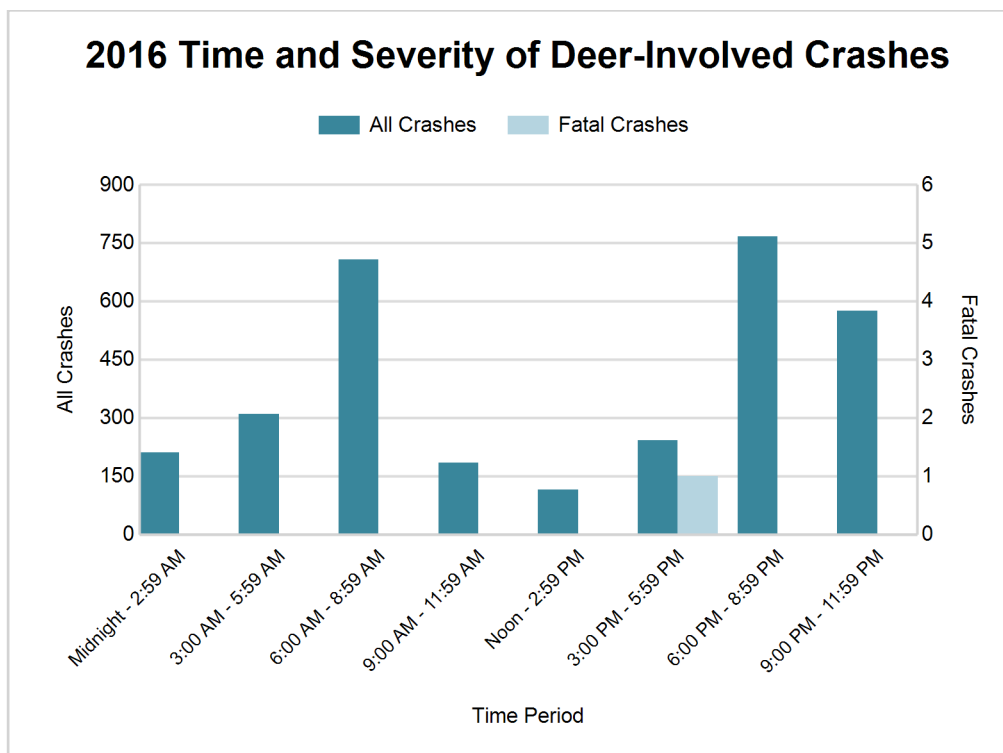
5-Year Trend - Deer-Involved Crashes by Time of Day

Time of Day	2012		2013		2014		2015		2016	
	Total Crashes	Fatal Crashes	Total Crashes	Fatal Crashes	Total Crashes	Fatal Crashes	Total Crashes	Fatal Crashes	Total Crashes	Fatal Crashes
Midnight - 2:59 AM	155	0	160	0	171	0	155	0	211	0
3:00 AM - 5:59 AM	240	0	288	0	282	0	245	0	309	0
6:00 AM - 8:59 AM	709	0	666	0	621	0	628	0	708	0
9:00 AM - 11:59 AM	176	0	168	0	158	0	146	0	184	0
Noon - 2:59 PM	123	0	126	0	121	0	94	0	115	0
3:00 PM - 5:59 PM	181	0	214	0	246	0	212	0	241	1
6:00 PM - 8:59 PM	792	0	746	0	619	0	710	0	766	0
9:00 PM - 11:59 PM	552	0	557	1	517	0	559	0	576	0
Unknown	1	0	1	0	0	0	0	0	3	0
Total	2,929	0	2,926	1	2,735	0	2,749	0	3,113	1

Note: † Indicates that the highest number of total crashes reported in the 5-year period occurred in the same time period



MSP Post 63 - Mount Pleasant (continued)



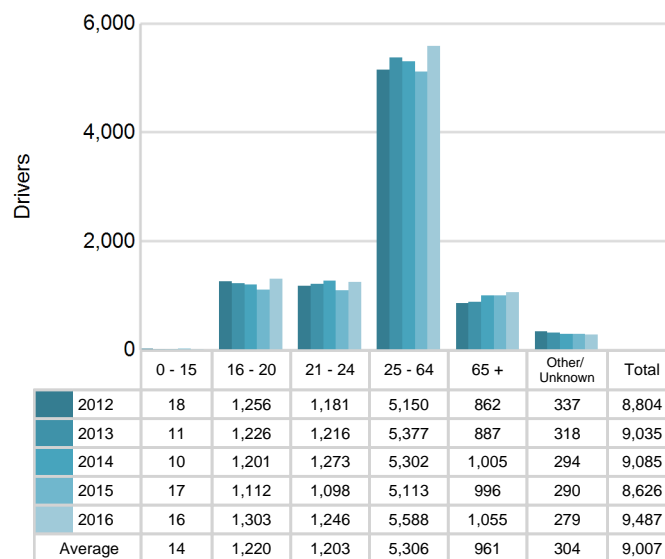
2016 - Reported Motor Vehicle Crashes by County

County	Crashes											Persons	
	Total	Fatal	Injury	Property Damage	Inter-state	US Route	State Route	Local Street	Alcohol-Involved	Drug-Involved	Deer-Involved	Fatalities	Injuries
Clare	1,140	6	128	1,006	0	412	199	526	29	16	558	8	184
Isabella	2,859	4	383	2,472	0	664	380	1,810	77	20	980	6	533
Mecosta	1,954	2	233	1,719	0	265	711	977	40	12	941	2	294
Osceola	1,115	2	119	994	0	369	150	592	22	4	634	2	160
Total	7,068	14	863	6,191	0	1,710	1,440	3,905	168	52	3,113	18	1,171

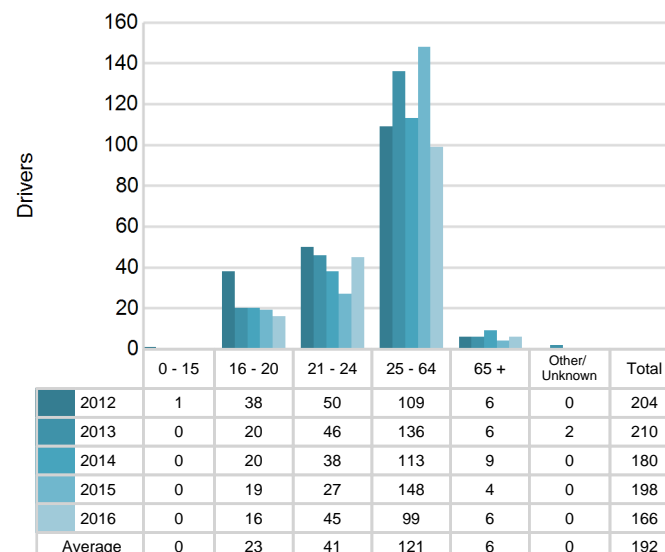
5-Year Trend - Drivers in Crashes Coded Drinking by Driver Age

Driver Age	2012		2013		2014		2015		2016	
	Total Drivers in Crashes	Total Drivers Coded Drinking	Total Drivers in Crashes	Total Drivers Coded Drinking	Total Drivers in Crashes	Total Drivers Coded Drinking	Total Drivers in Crashes	Total Drivers Coded Drinking	Total Drivers in Crashes	Total Drivers Coded Drinking
0 - 15	18	1	11	0	10	0	17	0	16	0
16 - 20	1,256	38	1,226	20	1,201	20	1,112	19	1,303	16
21 - 24	1,181	50	1,216	46	1,273	38	1,098	27	1,246	45
25 - 64	5,150	109	5,377	136	5,302	113	5,113	148	5,588	99
65 +	862	6	887	6	1,005	9	996	4	1,055	6
Unknown	337	0	318	2	294	0	290	0	279	0
Total	8,804	204	9,035	210	9,085	180	8,626	198	9,487	166

5-Year Trend Total Drivers in Crashes by Age



5-Year Trend Total Drivers Coded Drinking by Age



MSP Post 63 - Mount Pleasant (continued)

2016 - Bodily Alcohol Concentration (BAC) Results Among All Vehicle Drivers in Alcohol-Involved Crashes by Age

Age Group	Drivers				BAC Result Range for Drivers Coded Drinking				
	Total Drivers in Alcohol-Involved Crashes	Total Drivers Tested in all Crashes	Total Drivers Coded Drinking, Tested	Total Drivers Coded Drinking	BAC = 0.00	BAC 0.01 g/dL to 0.07 g/dL	BAC 0.08 g/dL to 0.16 g/dL	BAC 0.17 g/dL and Above	BAC Not Reported
0 - 15	0	0	0	0	0	0	0	0	0
16 - 20	24	26	14	16	0	3	5	2	6
21 - 24	52	41	32	45	0	9	12	9	15
25 - 64	115	119	76	99	3	7	26	21	42
65 +	7	8	6	6	1	0	1	4	0
Unknown	5	0	0	0	0	0	0	0	0
Total	203	194	128	166	4	19	44	36	63

Notes: BAC measured in grams (g) per deciliter (dL).

BAC may not be reported if drivers are not tested or if the results are not available immediately (as in the case of a blood test).

A driver may be coded by the officer as drinking even though no test is administered.

Alcohol-Involved Crashes

In 2016, there were 203 drivers in alcohol-involved crashes; 166 (81.8%) of those drivers were coded as had-been-drinking by the officer on the crash form.

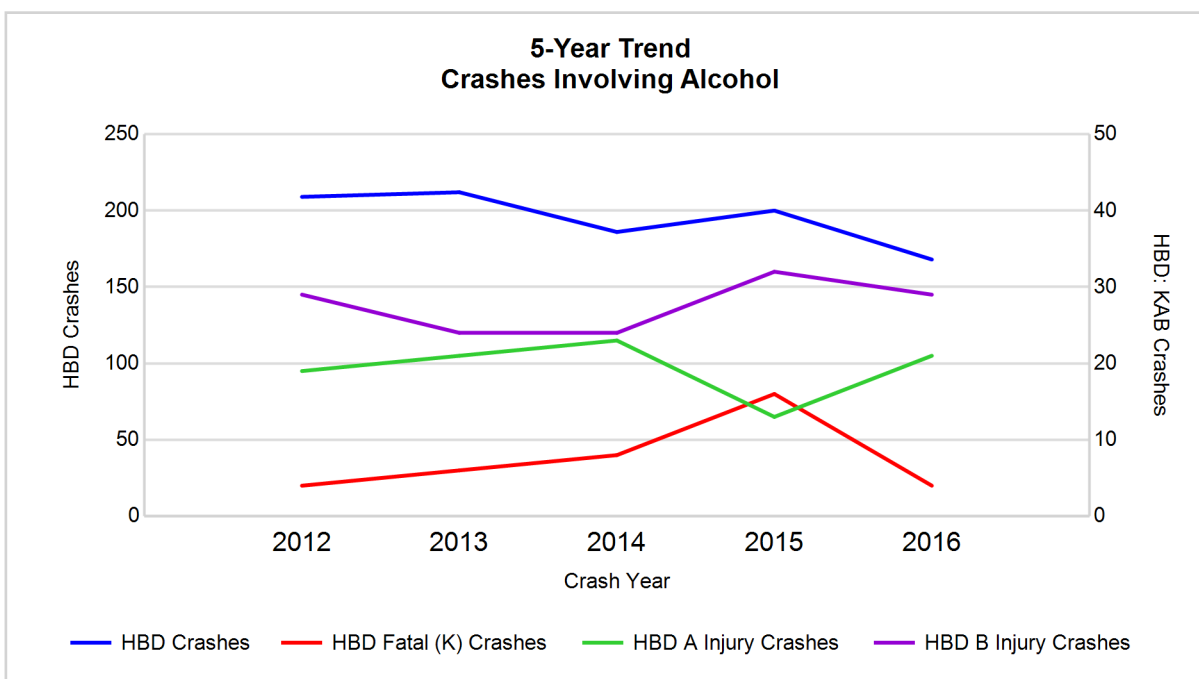
- 80 (48.2%) of the 166 drivers had a blood alcohol concentration (BAC) of 0.08 g/dL (grams per deciliter) or greater, and 36 (45.0%) of the 80 drivers had a BAC at or above 0.17 g/dL.
- 128 (77.1%) of the 166 drivers were coded as had-been-drinking and were tested for alcohol consumption.

5-Year Trend - Crashes Involving Alcohol

Year	All Crashes	HBD Crashes	% HBD	Fatal Crashes	HBD Fatal Crashes	% HBD	A Injury Crashes	HBD A Injury Crashes	% HBD	B Injury Crashes	HBD B Injury Crashes	% HBD
2012	6,573	209	3.2	23	4	17.4	114	19	16.7	252	29	11.5
2013	6,828	212	3.1	21	6	28.6	111	21	18.9	245	24	9.8
2014	6,678	186	2.8	21	8	38.1	104	23	22.1	231	24	10.4
2015	6,289	200	3.2	27	16	59.3	83	13	15.7	255	32	12.5
2016	7,068**	168*	2.4*	14*	4	28.6	103	21	20.4	267**	29	10.9

Note: * Indicates that the most recent year is the lowest number or percentage reported in the 5-year period in that column

** Indicates that the most recent year is the highest number or percentage reported in the 5-year period in that column



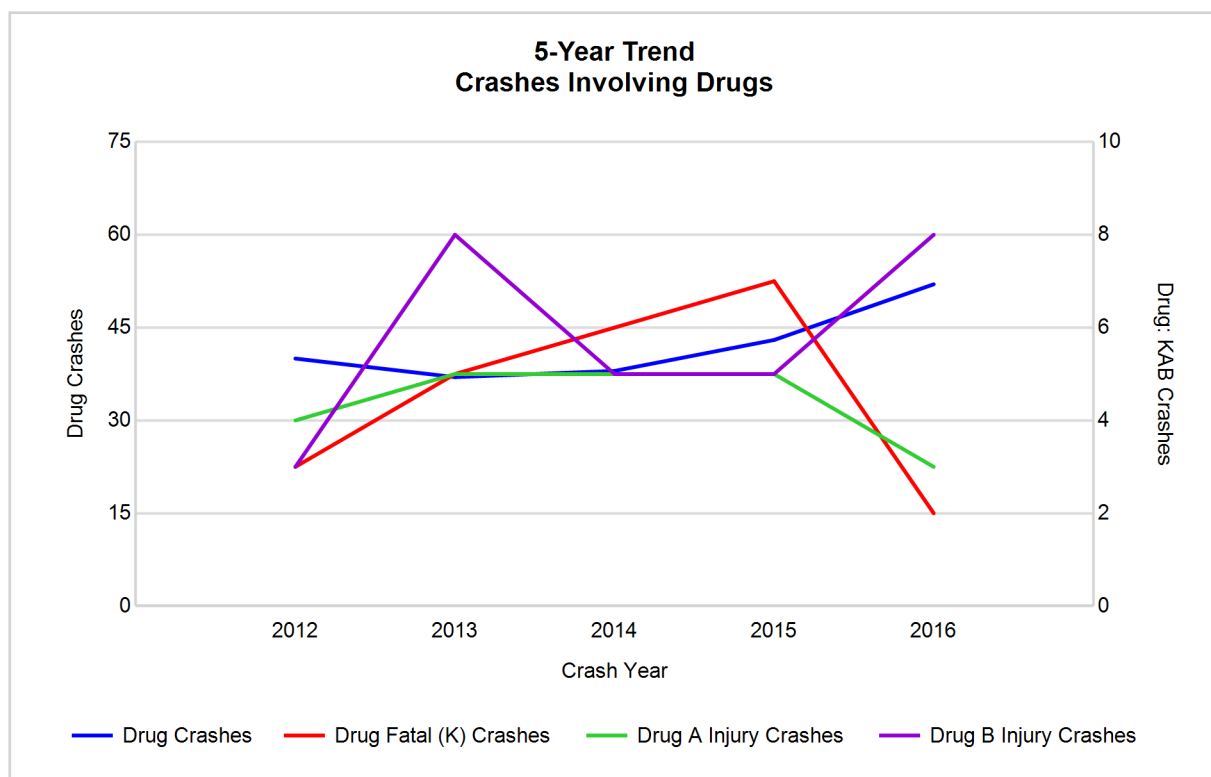
Note: Had-Been-Drinking (HBD)

5-Year Trend - Crashes Involving Drugs

Year	All Crashes	Drug Crashes	% Drug	Fatal Crashes	Drug Fatal Crashes	% Drug	A Injury Crashes	Drug A Injury Crashes	% Drug	B Injury Crashes	Drug B Injury Crashes	% Drug
2012	6,573	40	0.6	23	3	13.0	114	4	3.5	252	3	1.2
2013	6,828	37	0.5	21	5	23.8	111	5	4.5	245	8	3.3
2014	6,678	38	0.6	21	6	28.6	104	5	4.8	231	5	2.2
2015	6,289	43	0.7	27	7	25.9	83	5	6.0	255	5	2.0
2016	7,068**	52**	0.7	14*	2*	14.3	103	3*	2.9*	267**	8	3.0

Note: * Indicates that the most recent year is the lowest number or percentage reported in the 5-year period in that column

** Indicates that the most recent year is the highest number or percentage reported in the 5-year period in that column



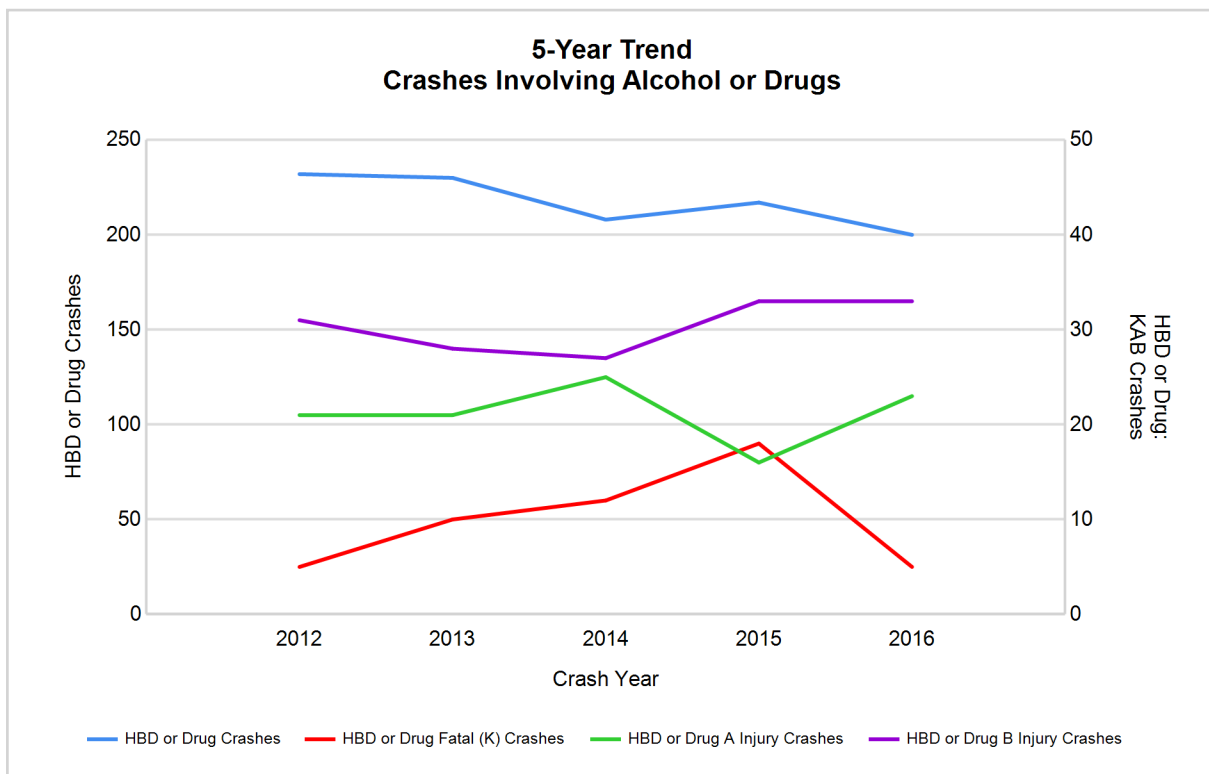
MSP Post 63 - Mount Pleasant (continued)

5-Year Trend - Crashes Involving Alcohol or Drugs

Year	All Crashes	HBD or Drug Crashes	% HBD or Drug	Fatal Crashes	HBD or Drug Fatal Crashes	% HBD or Drug	A Injury Crashes	HBD or Drug A Injury Crashes	% HBD or Drug	B Injury Crashes	HBD or Drug B Injury Crashes	% HBD or Drug
2012	6,573	232	3.5	23	5	21.7	114	21	18.4	252	31	12.3
2013	6,828	230	3.4	21	10	47.6	111	21	18.9	245	28	11.4
2014	6,678	208	3.1	21	12	57.1	104	25	24.0	231	27	11.7
2015	6,289	217	3.5	27	18	66.7	83	16	19.3	255	33	12.9
2016	7,068**	200*	2.8*	14*	5	35.7	103	23	22.3	267**	33	12.4

Note: * Indicates that the most recent year is the lowest number or percentage reported in the 5-year period in that column

** Indicates that the most recent year is the highest number or percentage reported in the 5-year period in that column



Note: Had-Been-Drinking (HBD)

MSP Post 63 - Mount Pleasant (continued)

13

2016 - Restraints Worn Among Vehicle Drivers and Injured Passengers by Vehicle Type

Vehicle Type	Total Occupants			Fatalities			A - Suspected Serious			B - Suspected Minor			C - Possible Injury			No Injury		
	Total	Used Restraint	%	Total	Used Restraint	%	Total	Used Restraint	%	Total	Used Restraint	%	Total	Used Restraint	%	Total	Used Restraint	%
Passenger car, SUV, van	7,538	7,131	94.6	11	7	63.6	69	49	71.0	229	202	88.2	544	514	94.5	6,530	6,359	97.4
Motor home	149	142	95.3	0	0	0.0	2	1	50.0	2	2	100.0	8	8	100.0	134	131	97.8
Pickup truck	1,697	1,602	94.4	4	3	75.0	15	9	60.0	49	42	85.7	100	95	95.0	1,496	1,453	97.1
Small truck under 10,000 lbs. GVWR	92	87	94.6	0	0	0.0	0	0	0.0	4	3	75.0	2	2	100.0	83	82	98.8
Motorcycle	63	44	69.8	2	1	50.0	14	7	50.0	16	12	75.0	15	12	80.0	16	12	75.0
Moped / goped	2	0	0.0	0	0	0.0	0	0	0.0	1	0	0.0	0	0	0.0	1	0	0.0
Go-cart / golf cart	2	0	0.0	0	0	0.0	0	0	0.0	1	0	0.0	1	0	0.0	0	0	0.0
Snowmobile	3	3	100.0	0	0	0.0	1	1	100.0	0	0	0.0	1	1	100.0	1	1	100.0
Off-Road Vehicle - ORV / All-Terrain Vehicle - ATV	25	15	60.0	1	0	0.0	7	3	42.9	9	6	66.7	4	4	100.0	3	1	33.3
Other	42	26	61.9	0	0	0.0	2	0	0.0	0	0	0.0	2	1	50.0	35	25	71.4
Truck/bus over 10,000 lbs.	135	126	93.3	0	0	0.0	0	0	0.0	1	1	100.0	3	3	100.0	128	122	95.3
Unknown	55	0	0.0	0	0	0.0	0	0	0.0	0	0	0.0	0	0	0.0	8	0	0.0
Total	9,803	9,176	93.6	18	11	61.1	110	70	63.6	312	268	85.9	680	640	94.1	8,435	8,186	97.0

Note: Restraint Use includes shoulder belt only used, lap belt only used, both lap and shoulder belts used, child restraint used, restraint failure, and helmet worn.

2016 - Restraints Worn Among Vehicle Drivers and Injured Passengers by Age

Age Group	Total Occupants			Fatalities			A - Suspected Serious			B - Suspected Minor			C - Possible Injury			No Injury		
	Total	Used Restraint	%	Total	Used Restraint	%	Total	Used Restraint	%	Total	Used Restraint	%	Total	Used Restraint	%	Total	Used Restraint	%
0 - 15	73	66	90.4	0	0	0.0	4	3	75.0	16	13	81.3	44	42	95.5	9	8	88.9
16 - 20	1,375	1,321	96.1	2	0	0.0	18	13	72.2	51	43	84.3	122	109	89.3	1,181	1,156	97.9
21 - 24	1,274	1,206	94.7	2	2	100.0	15	9	60.0	40	29	72.5	80	73	91.3	1,134	1,093	96.4
25 - 64	5,710	5,519	96.7	9	5	55.6	63	38	60.3	168	146	86.9	359	343	95.5	5,105	4,987	97.7
65 +	1,092	1,063	97.3	5	4	80.0	10	7	70.0	37	37	100.0	75	73	97.3	964	942	97.7
Unknown	279	1	0.4	0	0	0.0	0	0	0.0	0	0	0.0	0	0	0.0	42	0	0.0
Total	9,803	9,176	93.6	18	11	61.1	110	70	63.6	312	268	85.9	680	640	94.1	8,435	8,186	97.0

Note: Restraint Use includes shoulder belt only used, lap belt only used, both lap and shoulder belts used, child restraint used, restraint failure, and helmet worn.

MSP Post 63 - Mount Pleasant (continued)

5-Year Trend - Restraint Use Among Drivers

Restraint Use	2012			2013			2014			2015			2016		
	Drivers	Fatal Drivers	Injured Drivers	Drivers	Fatal Drivers	Injured Drivers	Drivers	Fatal Drivers	Injured Drivers	Drivers	Fatal Drivers	Injured Drivers	Drivers	Fatal Drivers	Injured Drivers
No belts available	70	0	14	61	0	7	27	0	1	33	0	4	23	0	3
Shoulder belt only used	5	0	2	8	0	0	9	0	1	19	0	1	30	0	3
Lap belt only used	19	0	3	33	0	8	29	0	3	41	1	6	50	0	2
Both lap & shoulder belts used	8,024	7	577	8,306	5	631	8,415	7	631	7,928	12	593	8,771	7	667
No belts used	84	5	33	72	2	30	79	4	35	69	4	27	63	4	25
Child restraint used	3	0	0	0	0	0	0	0	0	0	0	0	0	0	0
Child restraint not used, unavailable or improper use	0	0	0	0	0	0	1	0	0	0	0	0	0	0	0
Restraint failure	4	0	2	0	0	0	2	0	0	2	0	0	1	0	1
Restraint use unknown	177	1	18	212	2	17	197	3	20	204	1	20	409	0	30
Helmet worn	66	1	48	56	1	39	45	0	34	45	0	34	56	1	40
Helmet not worn	32	5	23	23	2	16	24	1	18	26	0	18	32	2	17
Helmet use unknown	4	0	3	0	0	0	3	0	2	3	0	2	3	0	2
Uncoded & errors	316	0	0	264	0	0	254	0	0	256	0	1	49	0	0
Total	8,804	19	723	9,035	12	748	9,085	15	745	8,626	18	706	9,487	14	790

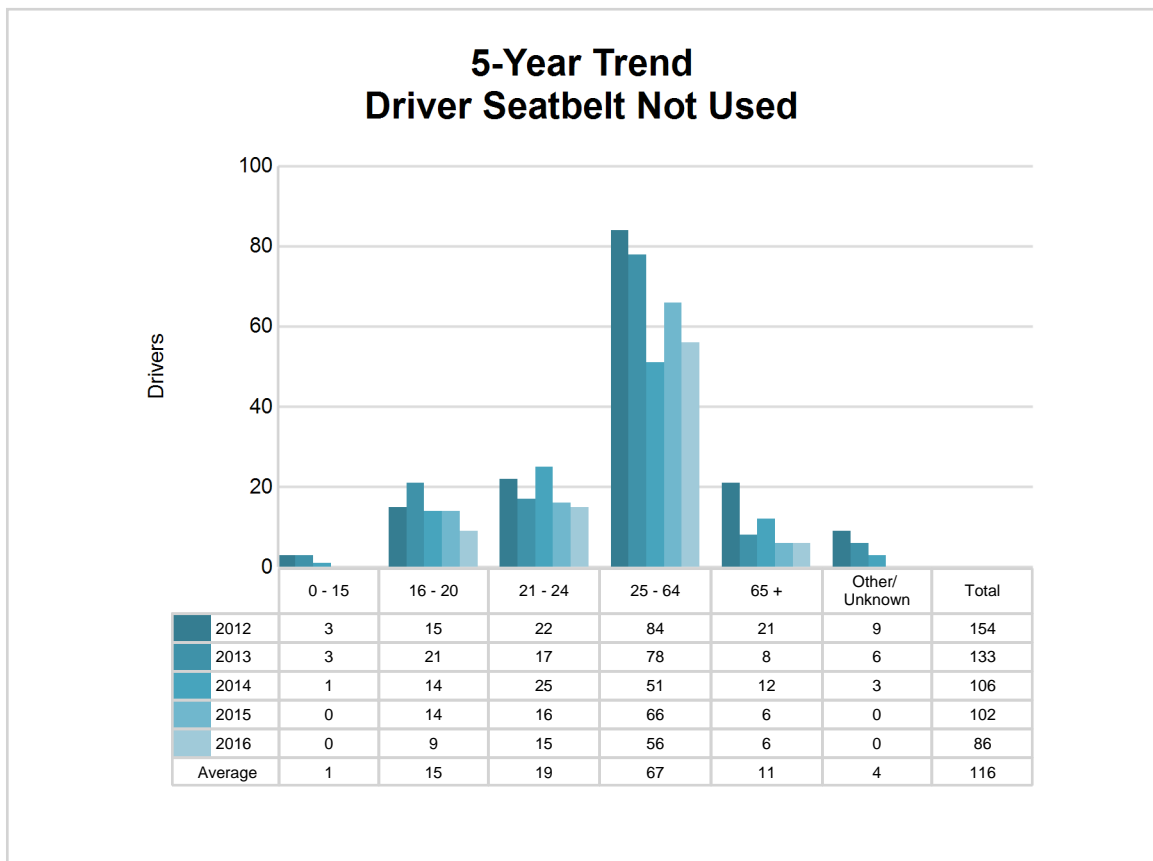
5-Year Trend - Restraint Use Among Drivers Coded Drinking

Restraint Use	2012			2013			2014			2015			2016		
	Drivers	Fatal Drivers	Injured Drivers	Drivers	Fatal Drivers	Injured Drivers	Drivers	Fatal Drivers	Injured Drivers	Drivers	Fatal Drivers	Injured Drivers	Drivers	Fatal Drivers	Injured Drivers
No belts available	3	0	0	3	0	2	1	0	0	2	0	1	1	0	1
Shoulder belt only used	0	0	0	0	0	0	1	0	0	1	0	0	3	0	0
Lap belt only used	1	0	1	0	0	0	0	0	0	1	1	0	1	0	0
Both lap & shoulder belts used	140	1	33	158	2	38	131	2	28	147	5	42	107	1	30
No belts used	16	0	10	16	1	8	17	1	10	15	4	9	17	1	12
Child restraint used	0	0	0	0	0	0	0	0	0	0	0	0	0	0	0
Child restraint not used, unavailable or improper use	0	0	0	0	0	0	0	0	0	0	0	0	0	0	0
Restraint failure	0	0	0	0	0	0	0	0	0	0	0	0	0	0	0
Restraint use unknown	30	0	8	27	0	9	22	1	8	23	0	2	30	0	8
Helmet worn	2	0	2	2	0	2	1	0	1	3	0	3	3	0	3
Helmet not worn	7	3	3	3	1	2	7	1	6	6	0	5	4	2	2
Helmet use unknown	1	0	1	0	0	0	0	0	0	0	0	0	0	0	0
Uncoded & errors	4	0	0	1	0	0	0	0	0	0	0	0	0	0	0
Total	204	4	58	210	4	61	180	5	53	198	10	62	166	4	56

5-Year Trend - Seatbelt Not Used Among Drivers by Age

Age Group	2012			2013			2014			2015			2016		
	Drivers	Fatal Drivers	Injured Drivers	Drivers	Fatal Drivers	Injured Drivers	Drivers	Fatal Drivers	Injured Drivers	Drivers	Fatal Drivers	Injured Drivers	Drivers	Fatal Drivers	Injured Drivers
0 - 15	3	0	0	3	0	0	1	0	0	0	0	0	0	0	0
16 - 20	15	0	6	21	0	6	14	1	5	14	0	3	9	1	3
21 - 24	22	1	5	17	0	7	25	0	14	16	1	4	15	0	5
25 - 64	84	2	30	78	1	22	51	2	16	66	3	22	56	3	20
65 +	21	2	6	8	1	2	12	1	1	6	0	2	6	0	0
Unknown	9	0	0	6	0	0	3	0	0	0	0	0	0	0	0
Total	154	5	47	133	2	37	106	4	36	102	4	31	86	4	28

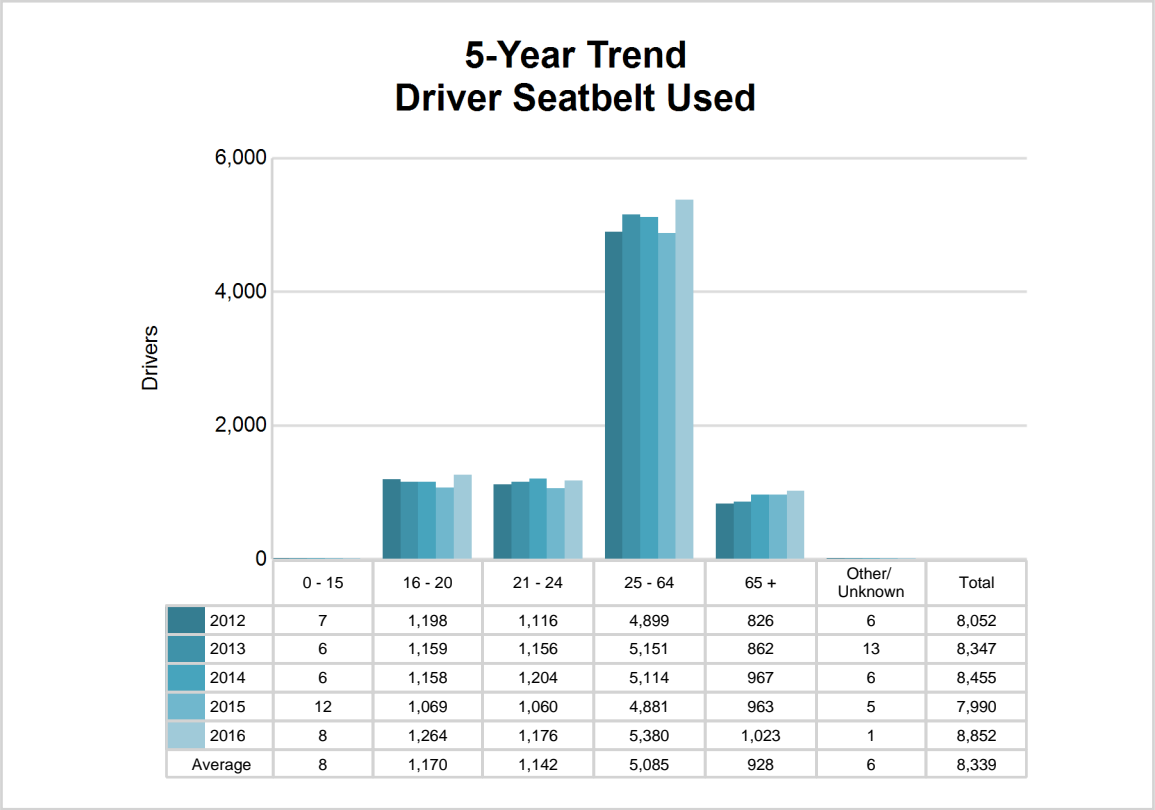
Note: Seatbelt Not Used includes no belts available or no belts used.



5-Year Trend - Seatbelt Used Among Drivers by Age

Age Group	2012			2013			2014			2015			2016		
	Drivers	Fatal Drivers	Injured Drivers	Drivers	Fatal Drivers	Injured Drivers	Drivers	Fatal Drivers	Injured Drivers	Drivers	Fatal Drivers	Injured Drivers	Drivers	Fatal Drivers	Injured Drivers
0 - 15	7	0	1	6	0	2	6	0	1	12	0	0	8	0	1
16 - 20	1,198	0	92	1,159	1	91	1,158	0	107	1,069	1	101	1,264	0	108
21 - 24	1,116	0	91	1,156	0	103	1,204	0	87	1,060	1	76	1,176	1	86
25 - 64	4,899	5	332	5,151	2	372	5,114	5	346	4,881	8	344	5,380	3	399
65 +	826	2	68	862	2	71	967	2	93	963	3	79	1,023	3	79
Unknown	6	0	0	13	0	0	6	0	1	5	0	0	1	0	0
Total	8,052	7	584	8,347	5	639	8,455	7	635	7,990	13	600	8,852	7	673

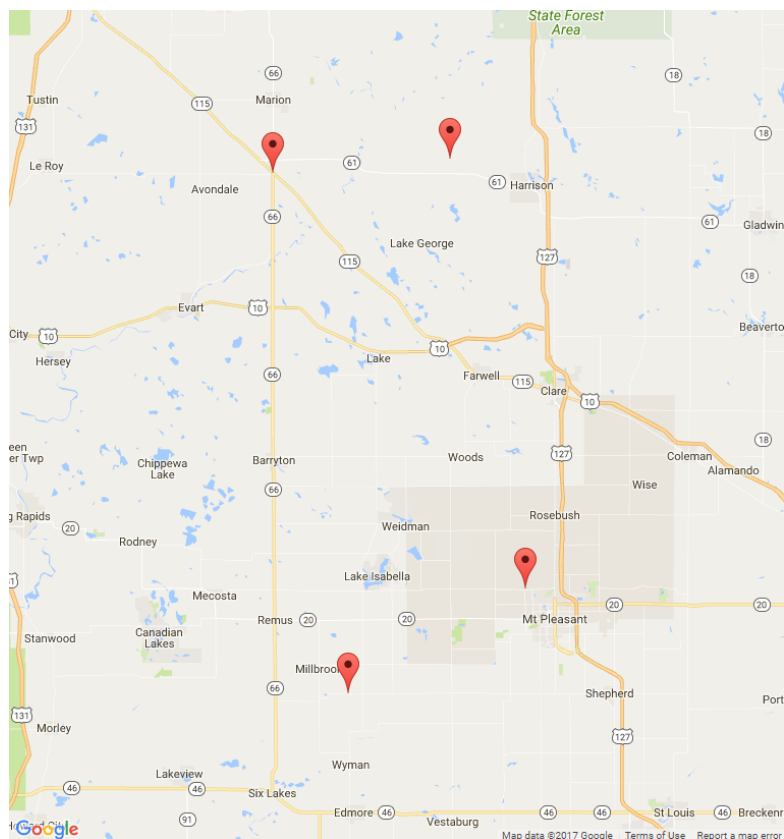
Note: Seatbelt Used includes shoulder belt only used, lap belt only used, both lap and shoulder belts used, and restraint failure.



5-Year Trend - Drivers in Crashes by Hazardous Action

Hazardous Action	2012		2013		2014		2015		2016	
	Total Drivers in Crashes	Drivers in Fatal Crashes	Total Drivers in Crashes	Drivers in Fatal Crashes	Total Drivers in Crashes	Drivers in Fatal Crashes	Total Drivers in Crashes	Drivers in Fatal Crashes	Total Drivers in Crashes	Drivers in Fatal Crashes
None	5,406	7	5,430	10	5,439	12	5,404	16	5,917	12
Speed too fast	960	8	1,182	5	1,179	6	749	8	974	2
Speed too slow	20	0	12	0	11	0	13	0	4	0
Failed to yield	660	1	683	1	693	3	721	3	721	1
Disregard traffic control	103	1	92	0	88	2	96	1	124	4
Drove wrong way	6	0	6	0	6	1	6	0	5	1
Drove left of center	27	1	31	0	38	3	46	2	41	0
Improper passing	33	1	37	1	44	0	38	0	34	0
Improper lane use	115	0	102	0	104	0	123	0	101	0
Improper turn	84	0	55	0	95	0	77	0	81	0
Improper/no signal	14	0	14	0	12	0	11	0	8	0
Improper backing	121	0	116	0	116	0	122	0	117	0
Unable to stop in assured clear distance	631	2	637	0	685	0	671	4	718	1
Other	158	2	192	2	194	0	177	1	213	2
Unknown	97	7	98	5	107	3	94	3	142	0
Reckless driving	44	0	42	0	38	1	57	1	45	0
Careless/negligent driving	263	0	281	4	220	2	218	2	240	1
Uncoded & errors	62	0	25	0	16	0	3	0	2	0
Total	8,804	30	9,035	28	9,085	33	8,626	41	9,487	24

MSP Post 63 - Mount Pleasant (continued)



The picture above represents all 2016 alcohol-involved fatal crashes in Post 63.

In 2016, there were 168 alcohol-involved crashes in Post 63:

4 K - Fatal Crashes

21 A - Suspected Serious Injury Crashes

29 B - Suspected Minor Injury Crashes

21 C - Possible Injury Crashes

93 O - Property Damage Only/No Injury Crashes

Office of Highway Safety Planning

Physical Address:
7150 Harris Drive
Dimondale, Michigan 48821

Mailing Address:
P.O. Box 30634
Lansing, Michigan 48909

Phone: (517) 284-3112
Fax: (517) 284-3151

Find us on the web:
MichiganTrafficCrashFacts.org

