



2016

MTCF
Michigan Traffic
Crash Facts

Michigan Traffic Crash Facts

Reporting Criteria

Please pay particular attention to the wording when interpreting the three levels of data gathered for this report.

Crash

The Crash Level analyzes data related to crash events and returns one result per crash.

Examples: Time, weather, and location.

Units

The Units Level analyzes the experience of the units in the crash and returns one result per vehicle, driver, pedestrian, bicyclist, or train.

Examples: Vehicle type, driver condition, and unit events.

People

The People Level analyzes the experience of the people involved in the crash and returns one result per occupant/person/party.

Examples: Age, injury severity, and seat belt or helmet use.

KABCO Injury Indicator:

K = Killed

A = Suspected Serious Injury

B = Suspected Minor Injury

C = Possible Injury

O = No Injury

Property Damage Only (PDO)



Michigan State Police (MSP) Post 62 - Hart

2016 Traffic Crash Data & 2012-2016 5-Year Trends

Post 62 is comprised of Lake, Mason, Newaygo, and Oceana counties. Trend tables for this report are based on those counties.



Sources:

The crashes in this report occurred on public roadways in Michigan and resulted in injuries, fatalities, or property damage (with \$1,000 as a reporting threshold). The information was gathered from Michigan Traffic Crash Report Forms (UD-10) submitted by local police departments, sheriff's offices, and the Michigan State Police. Other related information was obtained from the departments of Transportation, State, and Community Health.

This page left intentionally blank

MSP Post 62 - Hart

- There were 4,339 crashes in Post 62 during 2016. [Page 1]
- There were 19 fatalities in 19 fatal crashes in 2016 in Post 62. [Page 1]
- A total of 776 injuries resulted from 563 injury crashes. [Page 1]
- There were 3,757 property damage only crashes (no fatalities or injuries). [Page 1]
- November had the highest number of crashes (560). [Pages 1-2]
- June and July had the highest number of fatal crashes (3) and fatalities (3). [Pages 1-2]
- July had the highest number of injury crashes (66) and the highest number of injuries (97). [Page 1]
- November had the highest number of property damage only crashes (519). [Page 1]
- Of all vehicles involved in fatal crashes, five (17.9%) were motorcycles. [Page 1]
- Friday was the day of the week with the highest number of crashes (743). [Pages 2-3]
- The 6:00 PM – 8:59 PM time period had the highest number of crashes (862). The 3:00 PM – 5:59 PM time period had the highest number of fatal crashes (12). [Pages 5-6]
- During the period from 2012 to 2016, the highest number of deer crashes occurred in 2016 (2,142). There were two fatal crashes involving deer in 2016. [Pages 7-8]
- Newaygo County (35.1%) had the highest number of crashes in Post 62 in 2016, followed by Mason County (32.0%). [Page 8]
- Newaygo County (31.6%) had the highest number of fatalities in Post 62 in 2016, followed by Mason and Oceana Counties (26.3%). [Page 8]
- The highest number of drivers in crashes (5,442) occurred during 2016 within the five-year period, and the highest number of drivers coded drinking in crashes (158) occurred during 2012. [Page 9]
- A total of 137 crashes involved alcohol in 2016, but 2012 had the highest number of alcohol-involved crashes, with 157. [Page 10]
- Alcohol-involved fatal crashes were the lowest in 2016 during the five-year period from 2012 to 2016 at two. [Page 10]
- A total of 32 crashes and two fatal crashes involved drugs in 2016. The highest number of drug-involved suspected serious injury crashes (110) in the five-year time period occurred in 2016. [Page 11]
- There were 4,985 drivers wearing seatbelts and 76 drivers not wearing seatbelts in crashes in 2016. Of the 76 drivers not wearing seat belts, three (4.0%) were killed and 32 (42.1%) were injured. [Pages 14-16]
- The most common hazardous action coded for drivers in 2016 in all crashes was speed too fast (612), while the most common hazardous action coded for drivers in fatal crashes was failed to yield (4). [Page 17]

Post 62 Experience

In 2016:

There were 5,442 drivers involved in 4,339 motor vehicle crashes in MSP Post 62. Of those crashes, 19 were classified as fatal, resulting in 19 fatalities. An additional 776 persons were injured.

Post 62 experienced the highest number of motor vehicle crashes (560) in November, the highest number of fatal crashes (3) and the highest number of persons killed (3) in July, June.

Michigan driver statistics indicate 5.8 percent of licensed drivers in Post 62 were age 16-20, and 10.9 percent of drivers in crashes were also in that age group.

2016 - Crashes and Injuries by Month

Month	Crashes				Persons	
	Total	Fatal	Injury	Property Damage Only (PDO)	Fatalities	Injuries
January	427	1	37	389	1	50
February	314	0	36	278	0	51
March	255	1	33	221	1	53
April	244	2	31	211	2	49
May	320	2	55	263	2	77
June	336	3	56	277	3	78
July	300	3	66	231	3	97
August	310	2	60	248	2	77
September	348	2	56	290	2	69
October	459	1	40	418	1	56
November	560	1	40	519	1	52
December	466	1	53	412	1	67
Total	4,339	19	563	3,757	19	776

2016 - Driver Statistics

Age Group	Statewide			Driver Rates	
	2016 Population	Licensed Drivers	Drivers in Crashes	Per 10k Population	Per 10k Licensed
0 - 15	21,818	520	11	5.0	211.5
16 - 20	6,510	5,049	592	909.4	1,172.5
21 - 24	4,905	4,694	489	996.9	1,041.8
25 - 64	57,603	54,108	3,509	609.2	648.5
65 +	23,501	22,135	663	282.1	299.5
Unknown	0	0	178	--	--
Total	114,337	86,506	5,442	476.0	629.1

2016 - Vehicles in Crashes

Vehicle Type	Motor Vehicles		Fatal Crashes		Injury Crashes	PDO Crashes
	Number of Vehicles	% of Total	Number	% of Total	Number	Number
Passenger car, SUV, van	3,895	71.6	13	46.4	547	3,335
Motor home	94	1.7	0	0.0	15	79
Pickup truck	1,081	19.9	9	32.1	143	929
Small truck under 10,000 lbs. GVWR	112	2.1	0	0.0	16	96
Motorcycle	63	1.2	5	17.9	52	6
Moped / goped	11	0.2	0	0.0	10	1
Go-cart / golf cart	1	0.0	0	0.0	1	0
Snowmobile	8	0.1	0	0.0	5	3
Off-Road Vehicle - ORV / All-Terrain Vehicle - ATV	9	0.2	0	0.0	7	2
Other	39	0.7	0	0.0	6	33
Truck/bus over 10,000 lbs.	83	1.5	1	3.6	16	66
Unknown	46	0.8	0	0.0	0	46
Total	5,442	100.0	28	100.0	818	4,596

5-Year Trend - Crashes by Month

Month	2012		2013		2014		2015		2016	
	Total Crashes	Fatal Crashes	Total Crashes	Fatal Crashes	Total Crashes	Fatal Crashes	Total Crashes	Fatal Crashes	Total Crashes	Fatal Crashes
January	417	0	376	1	401	0	338	1	427	1
February	285	2	361	0	283	1	295	0	314	0
March	245	0	304	0	341	1	233	1	255	1
April	203	1	221	0	221	1	200	0	244	2
May	275	2	246	2	300	1	286	1	320	2
June	323	0	315	2	324	1	343	1	336	3
July	341	2	316	2	304	3	313	1	300	3
August	236	2	274	2	287	0	272	2	310	2
September	284	1	306	1	264	3	283	3	348	2
October	456	3	375	6	381	0	442	1	459	1
November	491 †	2	589 †	0	565 †	1	498 †	1	560 †	1
December	416	1	375	0	383	1	323	2	466	1
Total	3,972	16	4,058	16	4,054	13	3,826	14	4,339	19

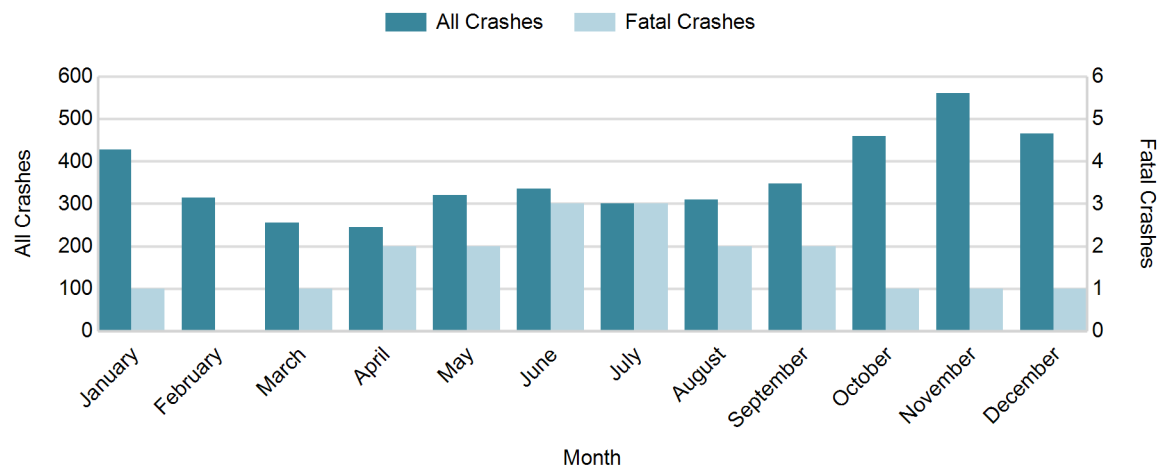
Note: † Indicates that the highest number of total crashes reported in the 5-year period occurred in the same month

5-Year Trend - Crashes by Day of Week

Day	2012		2013		2014		2015		2016	
	Total Crashes	Fatal Crashes	Total Crashes	Fatal Crashes	Total Crashes	Fatal Crashes	Total Crashes	Fatal Crashes	Total Crashes	Fatal Crashes
Monday	511	2	560	0	624	3	556	2	554	2
Tuesday	526	2	639	1	570	0	555	0	635	3
Wednesday	501	1	594	3	593	2	531	4	641	3
Thursday	644	2	534	0	594	2	602	2	635	3
Friday	724	2	650	6	643	0	575	0	743	3
Saturday	560	2	564	0	540	4	558	2	629	3
Sunday	506	5	517	6	490	2	449	4	502	2
Total	3,972	16	4,058	16	4,054	13	3,826	14	4,339	19

Note: † Indicates that the highest number of total crashes reported in the 5-year period occurred on the same day of the week

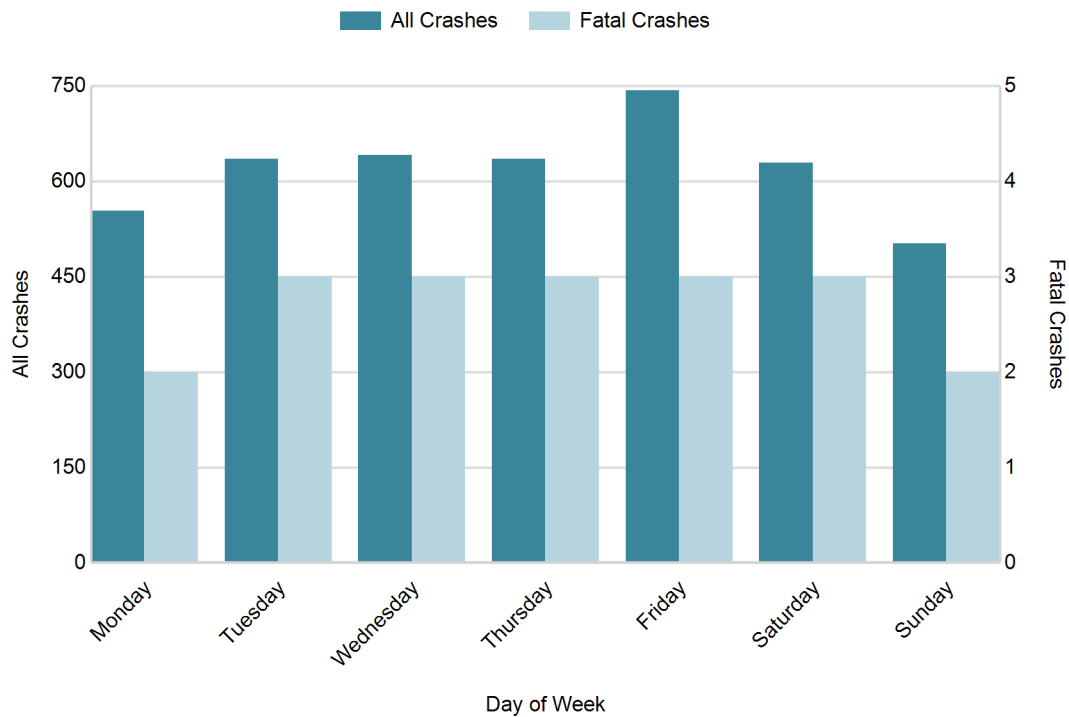
2016 Crashes by Month



2016 - Crashes by Day of Week

Day	All Crashes		Fatal Crashes		Injury Crashes			PDO Crashes
	Number	% of Total	Number	% of Fatal	A	B	C	Number
Monday	554	12.8	2	10.5	10	10	32	500
Tuesday	635	14.6	3	15.8	19	31	28	554
Wednesday	641	14.8	3	15.8	8	24	44	562
Thursday	635	14.6	3	15.8	10	26	43	553
Friday	743	17.1	3	15.8	18	31	48	643
Saturday	629	14.5	3	15.8	20	35	38	533
Sunday	502	11.6	2	10.5	25	29	34	412
Total	4,339	100.0	19	100.0	110	186	267	3,757

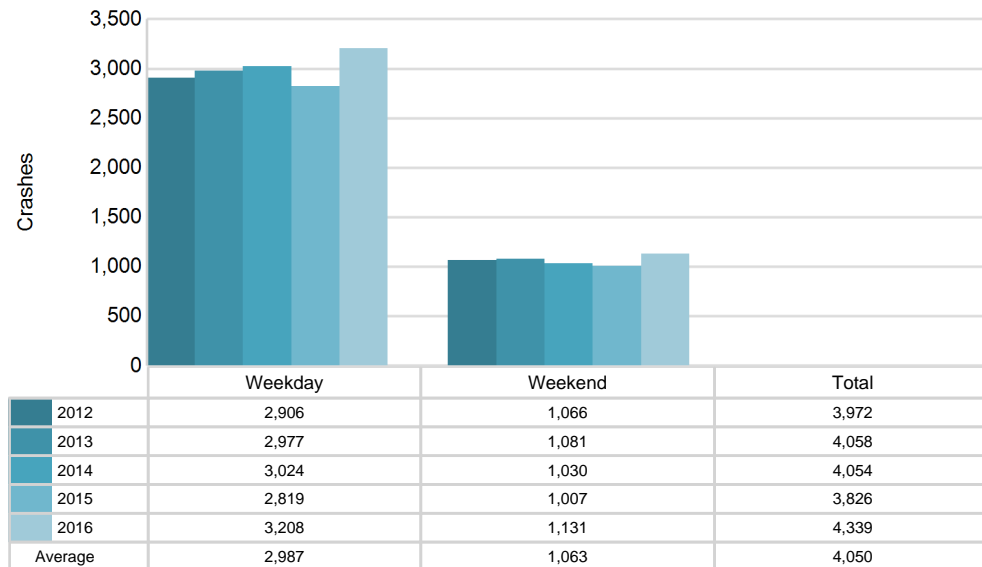
2016 Day of Week and Severity



5-Year Trend - Crashes by Weekday and Weekend

Portion of Week	2012		2013		2014		2015		2016	
	Total Crashes	Fatal Crashes	Total Crashes	Fatal Crashes	Total Crashes	Fatal Crashes	Total Crashes	Fatal Crashes	Total Crashes	Fatal Crashes
Weekday	2,906	9	2,977	10	3,024	7	2,819	8	3,208	14
Weekend	1,066	7	1,081	6	1,030	6	1,007	6	1,131	5
Total	3,972	16	4,058	16	4,054	13	3,826	14	4,339	19

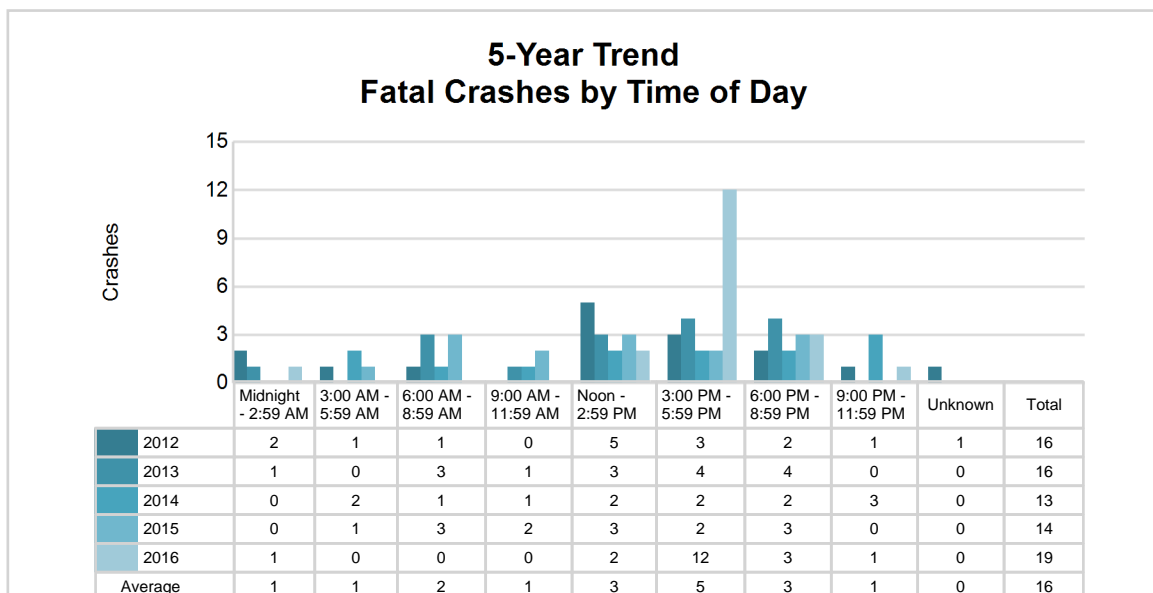
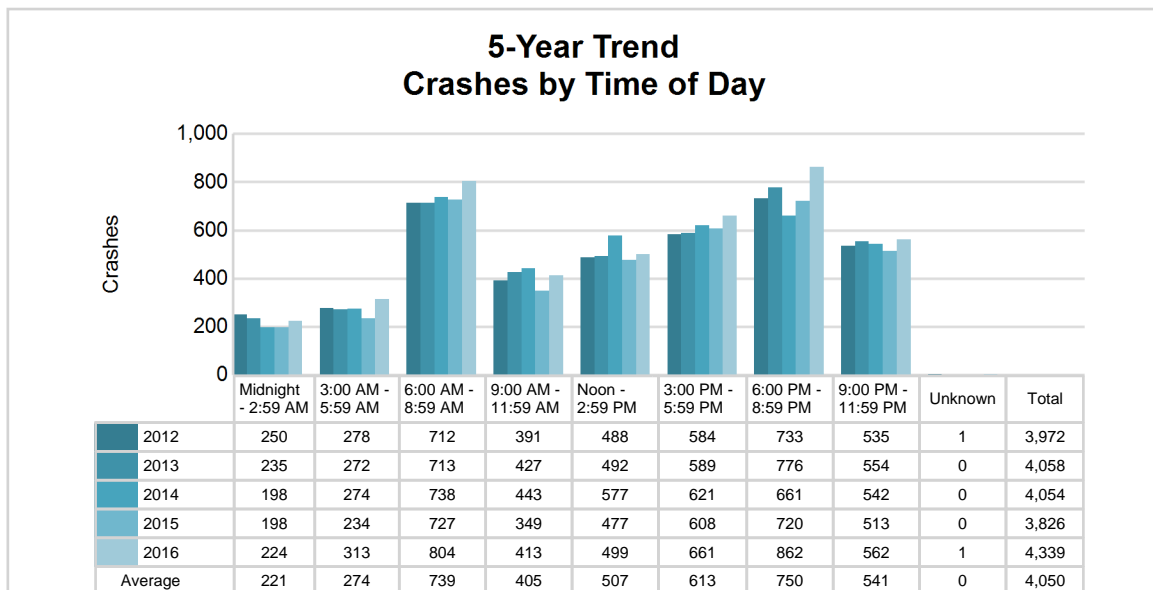
5-Year Crash Trends by Weekday (Monday - Friday) and Weekend (Saturday & Sunday)



5-Year Trend - Crashes by Time of Day

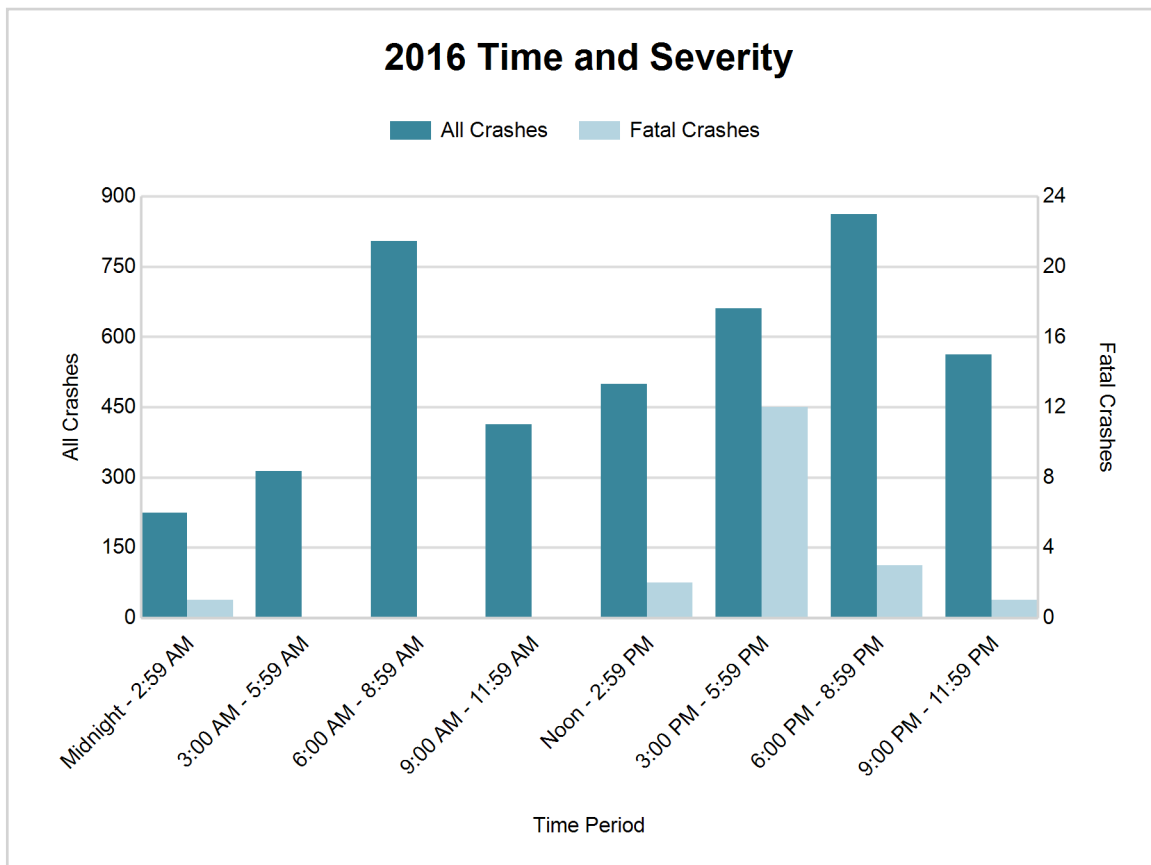
Time of Day	2012		2013		2014		2015		2016	
	Total Crashes	Fatal Crashes	Total Crashes	Fatal Crashes	Total Crashes	Fatal Crashes	Total Crashes	Fatal Crashes	Total Crashes	Fatal Crashes
Midnight - 2:59 AM	250	2	235	1	198	0	198	0	224	1
3:00 AM - 5:59 AM	278	1	272	0	274	2	234	1	313	0
6:00 AM - 8:59 AM	712	1	713	3	738	1	727	3	804	0
9:00 AM - 11:59 AM	391	0	427	1	443	1	349	2	413	0
Noon - 2:59 PM	488	5	492	3	577	2	477	3	499	2
3:00 PM - 5:59 PM	584	3	589	4	621	2	608	2	661	12
6:00 PM - 8:59 PM	733	2	776	4	661	2	720	3	862	3
9:00 PM - 11:59 PM	535	1	554	0	542	3	513	0	562	1
Unknown	1	1	0	0	0	0	0	0	1	0
Total	3,972	16	4,058	16	4,054	13	3,826	14	4,339	19

Note: † Indicates that the highest number of total crashes reported in the 5-year period occurred in the same time period



2016 - Time and Severity

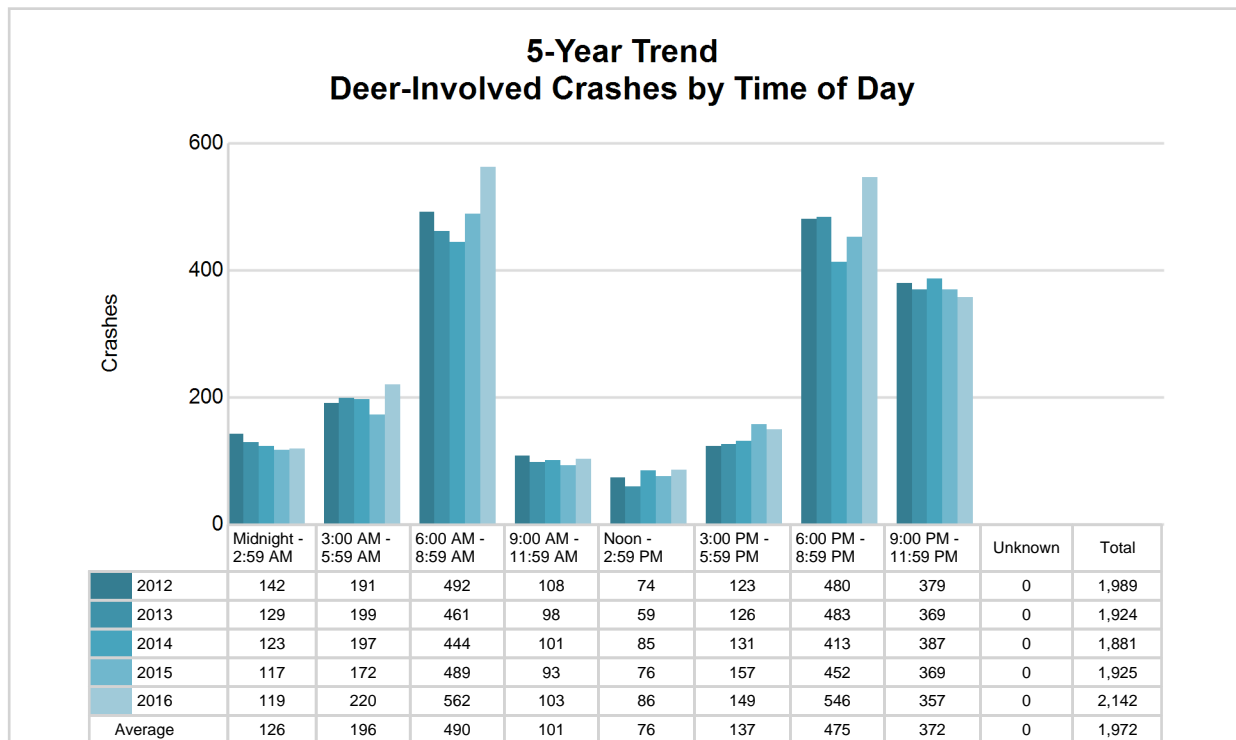
Time of Day	All Crashes		Fatal Crashes		Injury Crashes			PDO Crashes
	Number	% of Total	Number	% of Fatal	A	B	C	Number
Midnight - 2:59 AM	224	5.2	1	5.3	7	14	7	195
3:00 AM - 5:59 AM	313	7.2	0	0.0	2	8	10	293
6:00 AM - 8:59 AM	804	18.5	0	0.0	15	17	30	742
9:00 AM - 11:59 AM	413	9.5	0	0.0	8	21	42	342
Noon - 2:59 PM	499	11.5	2	10.5	24	30	51	392
3:00 PM - 5:59 PM	661	15.2	12	63.2	31	46	66	506
6:00 PM - 8:59 PM	862	19.9	3	15.8	11	34	38	776
9:00 PM - 11:59 PM	562	13.0	1	5.3	12	16	23	510
Unknown	1	0.0	0	0.0	0	0	0	1
Total	4,339	100.0	19	100.0	110	186	267	3,757

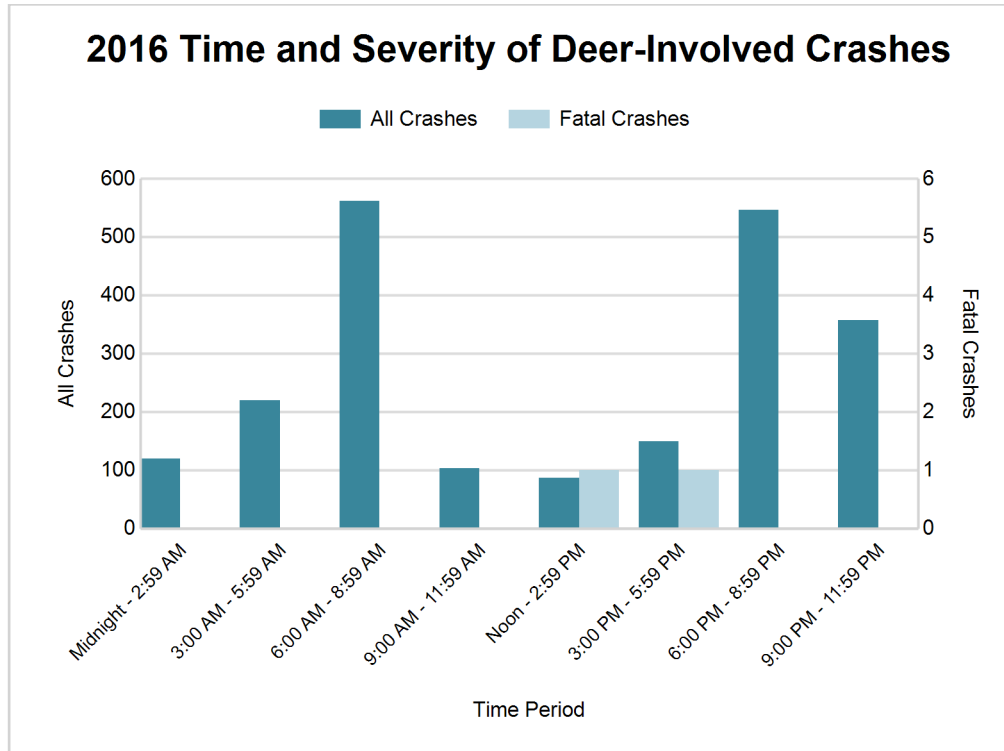


5-Year Trend - Deer-Involved Crashes by Time of Day

Time of Day	2012		2013		2014		2015		2016	
	Total Crashes	Fatal Crashes	Total Crashes	Fatal Crashes	Total Crashes	Fatal Crashes	Total Crashes	Fatal Crashes	Total Crashes	Fatal Crashes
Midnight - 2:59 AM	142	0	129	1	123	0	117	0	119	0
3:00 AM - 5:59 AM	191	0	199	0	197	0	172	0	220	0
6:00 AM - 8:59 AM	492	0	461	1	444	0	489	1	562	0
9:00 AM - 11:59 AM	108	0	98	0	101	0	93	0	103	0
Noon - 2:59 PM	74	0	59	0	85	0	76	0	86	1
3:00 PM - 5:59 PM	123	0	126	0	131	1	157	0	149	1
6:00 PM - 8:59 PM	480	0	483	1	413	0	452	0	546	0
9:00 PM - 11:59 PM	379	1	369	0	387	1	369	0	357	0
Unknown	0	0	0	0	0	0	0	0	0	0
Total	1,989	1	1,924	3	1,881	2	1,925	1	2,142	2

Note: † Indicates that the highest number of total crashes reported in the 5-year period occurred in the same time period





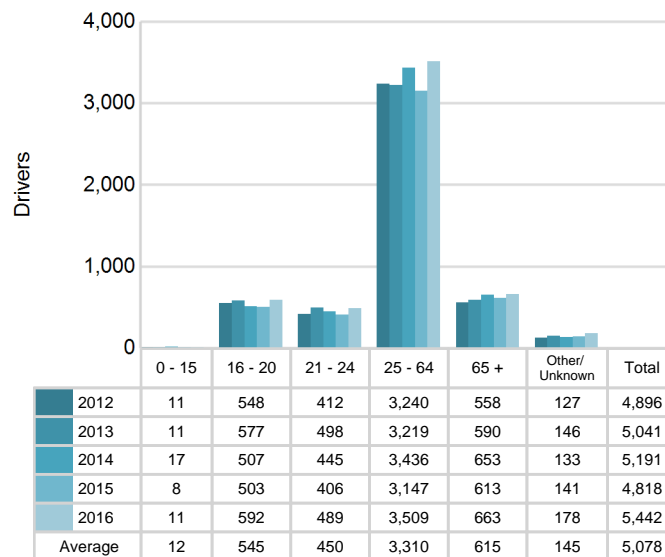
2016 - Reported Motor Vehicle Crashes by County

County	Crashes											Persons	
	Total	Fatal	Injury	Property Damage	Inter-state	US Route	State Route	Local Street	Alcohol-Involved	Drug-Involved	Deer-Involved	Fatalities	Injuries
Lake	445	3	70	372	0	108	69	267	22	0	238	3	101
Mason	1,389	5	123	1,261	0	555	38	796	21	9	739	5	156
Newaygo	1,525	6	236	1,283	0	0	524	996	56	15	668	6	338
Oceana	980	5	134	841	0	251	117	605	38	8	497	5	181
Total	4,339	19	563	3,757	0	914	748	2,664	137	32	2,142	19	776

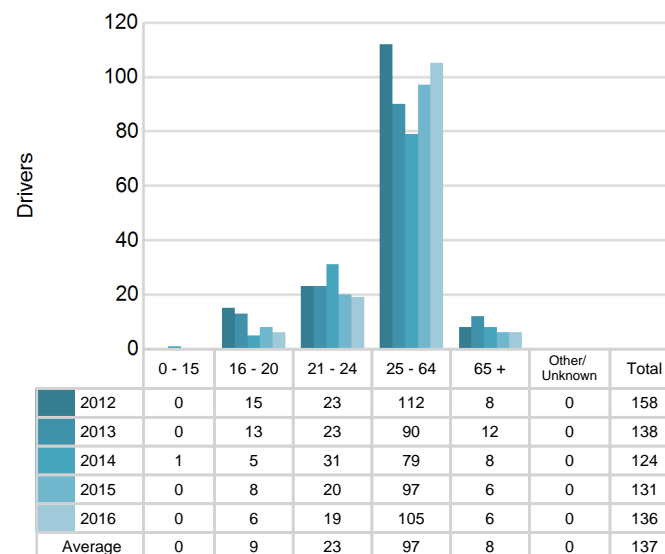
5-Year Trend - Drivers in Crashes Coded Drinking by Driver Age

Driver Age	2012		2013		2014		2015		2016	
	Total Drivers in Crashes	Total Drivers Coded Drinking	Total Drivers in Crashes	Total Drivers Coded Drinking	Total Drivers in Crashes	Total Drivers Coded Drinking	Total Drivers in Crashes	Total Drivers Coded Drinking	Total Drivers in Crashes	Total Drivers Coded Drinking
0 - 15	11	0	11	0	17	1	8	0	11	0
16 - 20	548	15	577	13	507	5	503	8	592	6
21 - 24	412	23	498	23	445	31	406	20	489	19
25 - 64	3,240	112	3,219	90	3,436	79	3,147	97	3,509	105
65 +	558	8	590	12	653	8	613	6	663	6
Unknown	127	0	146	0	133	0	141	0	178	0
Total	4,896	158	5,041	138	5,191	124	4,818	131	5,442	136

5-Year Trend Total Drivers in Crashes by Age



5-Year Trend Total Drivers Coded Drinking by Age



2016 - Bodily Alcohol Concentration (BAC) Results Among All Vehicle Drivers in Alcohol-Involved Crashes by Age

Age Group	Drivers				BAC Result Range for Drivers Coded Drinking				
	Total Drivers in Alcohol-Involved Crashes	Total Drivers Tested in all Crashes	Total Drivers Coded Drinking, Tested	Total Drivers Coded Drinking	BAC = 0.00	BAC 0.01 g/dL to 0.07 g/dL	BAC 0.08 g/dL to 0.16 g/dL	BAC 0.17 g/dL and Above	BAC Not Reported
0 - 15	0	0	0	0	0	0	0	0	0
16 - 20	7	14	5	6	0	0	3	1	2
21 - 24	22	22	14	19	0	1	6	5	7
25 - 64	120	118	84	105	0	15	24	25	41
65 +	10	8	6	6	0	1	4	1	0
Unknown	4	0	0	0	0	0	0	0	0
Total	163	162	109	136	0	17	37	32	50

Notes: BAC measured in grams (g) per deciliter (dL).

BAC may not be reported if drivers are not tested or if the results are not available immediately (as in the case of a blood test).

A driver may be coded by the officer as drinking even though no test is administered.

Alcohol-Involved Crashes

In 2016, there were 163 drivers in alcohol-involved crashes; 136 (83.4%) of those drivers were coded as had-been-drinking by the officer on the crash form.

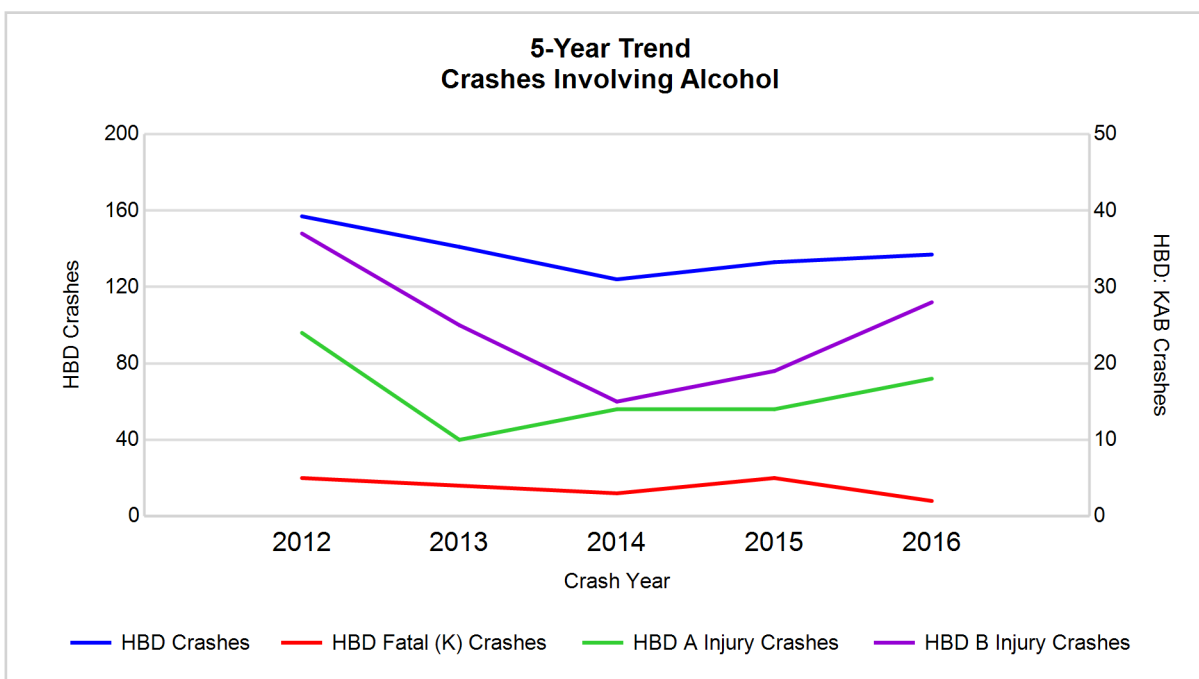
- 69 (50.7%) of the 136 drivers had a blood alcohol concentration (BAC) of 0.08 g/dL (grams per deciliter) or greater, and 32 (46.4%) of the 69 drivers had a BAC at or above 0.17 g/dL.
- 109 (80.1%) of the 136 drivers were coded as had-been-drinking and were tested for alcohol consumption.

5-Year Trend - Crashes Involving Alcohol

Year	All Crashes	HBD Crashes	% HBD	Fatal Crashes	HBD Fatal Crashes	% HBD	A Injury Crashes	HBD A Injury Crashes	% HBD	B Injury Crashes	HBD B Injury Crashes	% HBD
2012	3,972	157	4.0	16	5	31.3	96	24	25.0	182	37	20.3
2013	4,058	141	3.5	16	4	25.0	92	10	10.9	187	25	13.4
2014	4,054	124	3.1	13	3	23.1	76	14	18.4	188	15	8.0
2015	3,826	133	3.5	14	5	35.7	63	14	22.2	151	19	12.6
2016	4,339**	137	3.2	19**	2*	10.5*	110**	18	16.4	186	28	15.1

Note: * Indicates that the most recent year is the lowest number or percentage reported in the 5-year period in that column

** Indicates that the most recent year is the highest number or percentage reported in the 5-year period in that column



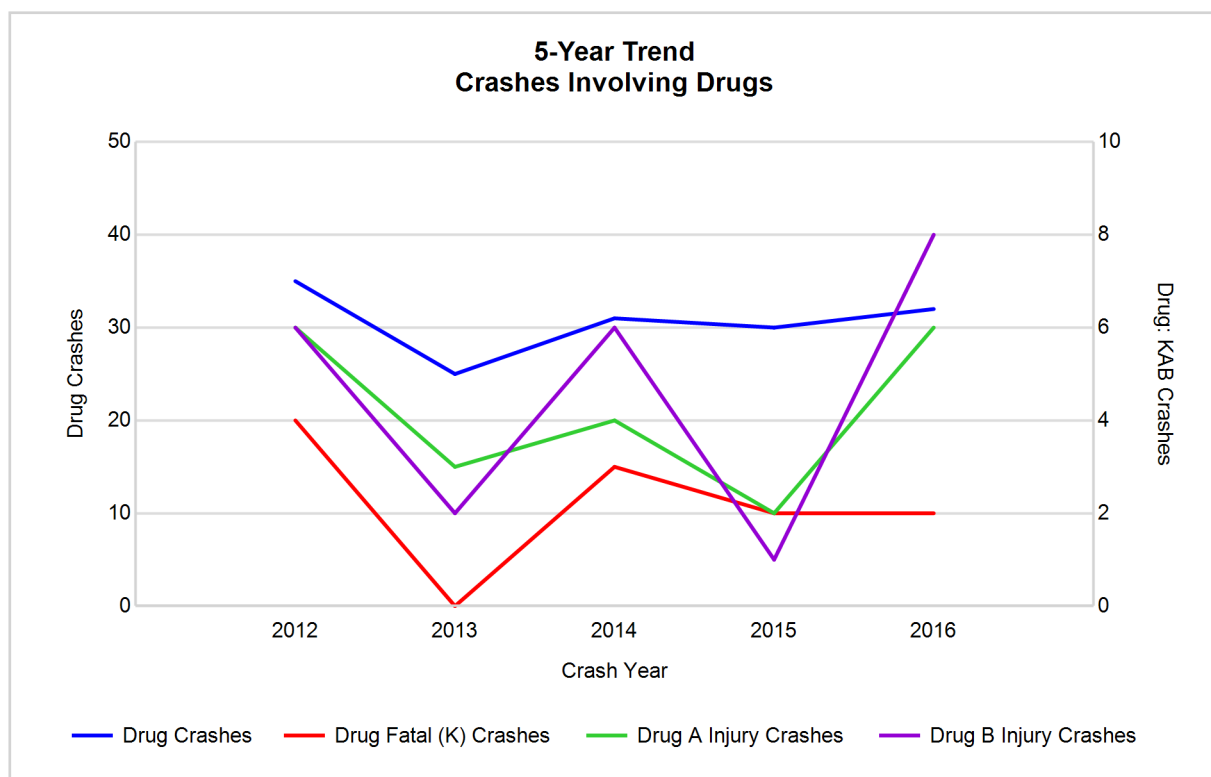
Note: Had-Been-Drinking (HBD)

5-Year Trend - Crashes Involving Drugs

Year	All Crashes	Drug Crashes	% Drug	Fatal Crashes	Drug Fatal Crashes	% Drug	A Injury Crashes	Drug A Injury Crashes	% Drug	B Injury Crashes	Drug B Injury Crashes	% Drug
2012	3,972	35	0.9	16	4	25.0	96	6	6.3	182	6	3.3
2013	4,058	25	0.6	16	0	0.0	92	3	3.3	187	2	1.1
2014	4,054	31	0.8	13	3	23.1	76	4	5.3	188	6	3.2
2015	3,826	30	0.8	14	2	14.3	63	2	3.2	151	1	0.7
2016	4,339**	32	0.7	19**	2	10.5	110**	6	5.5	186	8**	4.3**

Note: * Indicates that the most recent year is the lowest number or percentage reported in the 5-year period in that column

** Indicates that the most recent year is the highest number or percentage reported in the 5-year period in that column

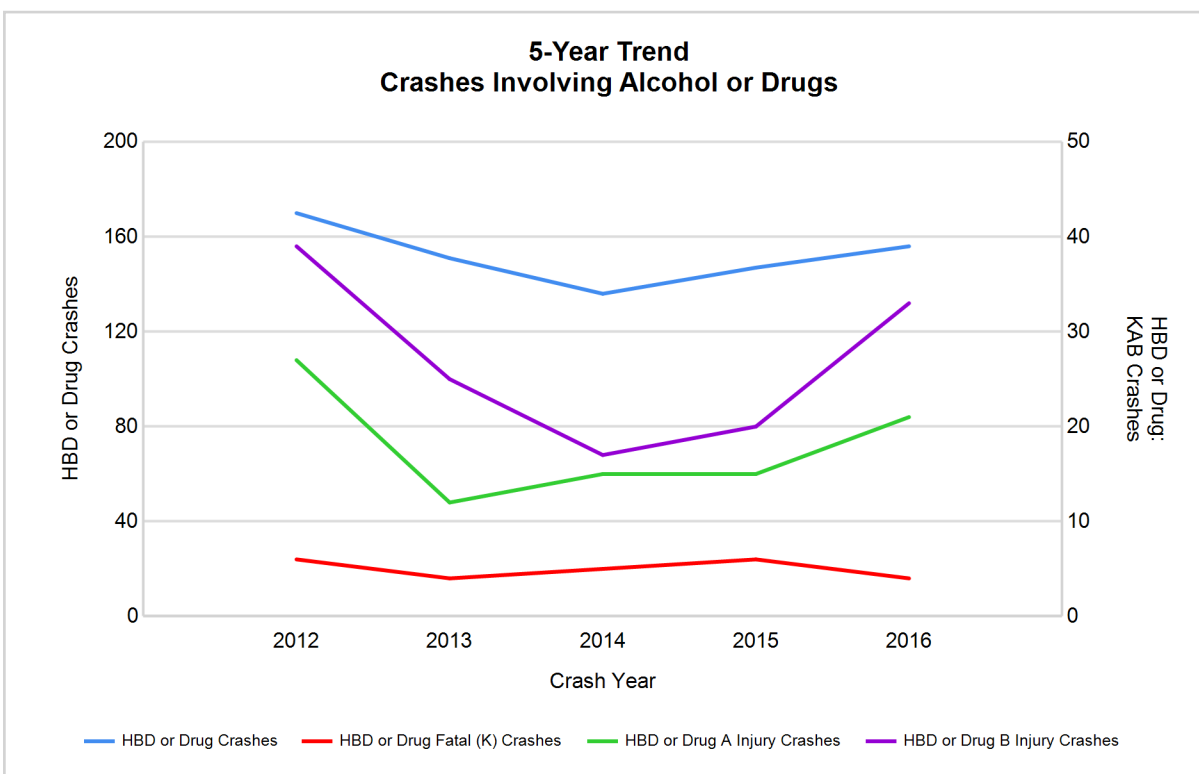


5-Year Trend - Crashes Involving Alcohol or Drugs

Year	All Crashes	HBD or Drug Crashes	% HBD or Drug	Fatal Crashes	HBD or Drug Fatal Crashes	% HBD or Drug	A Injury Crashes	HBD or Drug A Injury Crashes	% HBD or Drug	B Injury Crashes	HBD or Drug B Injury Crashes	% HBD or Drug
2012	3,972	170	4.3	16	6	37.5	96	27	28.1	182	39	21.4
2013	4,058	151	3.7	16	4	25.0	92	12	13.0	187	25	13.4
2014	4,054	136	3.4	13	5	38.5	76	15	19.7	188	17	9.0
2015	3,826	147	3.8	14	6	42.9	63	15	23.8	151	20	13.2
2016	4,339**	156	3.6	19**	4	21.1*	110**	21	19.1	186	33	17.7

Note: * Indicates that the most recent year is the lowest number or percentage reported in the 5-year period in that column

** Indicates that the most recent year is the highest number or percentage reported in the 5-year period in that column



Note: Had-Been-Drinking (HBD)

2016 - Restraints Worn Among Vehicle Drivers and Injured Passengers by Vehicle Type

Vehicle Type	Total Occupants			Fatalities			A - Suspected Serious			B - Suspected Minor			C - Possible Injury			No Injury		
	Total	Used Restraint	%	Total	Used Restraint	%	Total	Used Restraint	%	Total	Used Restraint	%	Total	Used Restraint	%	Total	Used Restraint	%
Passenger car, SUV, van	4,043	3,807	94.2	8	5	62.5	81	66	81.5	151	127	84.1	285	265	93.0	3,426	3,342	97.5
Motor home	103	90	87.4	0	0	0.0	7	2	28.6	5	3	60.0	6	6	100.0	82	79	96.3
Pickup truck	1,118	1,045	93.5	4	1	25.0	15	10	66.7	30	24	80.0	65	61	93.8	975	949	97.3
Small truck under 10,000 lbs. GVWR	115	106	92.2	0	0	0.0	2	1	50.0	6	4	66.7	7	6	85.7	97	95	97.9
Motorcycle	74	43	58.1	5	3	60.0	20	13	65.0	28	13	46.4	12	10	83.3	8	4	50.0
Moped / goped	11	3	27.3	0	0	0.0	4	1	25.0	5	2	40.0	0	0	0.0	2	0	0.0
Go-cart / golf cart	2	2	100.0	0	0	0.0	0	0	0.0	1	1	100.0	0	0	0.0	1	1	100.0
Snowmobile	10	9	90.0	0	0	0.0	3	3	100.0	2	1	50.0	1	1	100.0	4	4	100.0
Off-Road Vehicle - ORV / All-Terrain Vehicle - ATV	13	8	61.5	0	0	0.0	2	2	100.0	4	2	50.0	3	2	66.7	4	2	50.0
Other	39	22	56.4	0	0	0.0	1	0	0.0	0	0	0.0	1	0	0.0	35	22	62.9
Truck/bus over 10,000 lbs.	86	78	90.7	0	0	0.0	0	0	0.0	1	1	100.0	8	5	62.5	74	72	97.3
Unknown	46	0	0.0	0	0	0.0	0	0	0.0	0	0	0.0	0	0	0.0	0	0	0.0
Total	5,660	5,213	92.1	17	9	52.9	135	98	72.6	233	178	76.4	388	356	91.8	4,708	4,570	97.1

Note: Restraint Use includes shoulder belt only used, lap belt only used, both lap and shoulder belts used, child restraint used, restraint failure, and helmet worn.

2016 - Restraints Worn Among Vehicle Drivers and Injured Passengers by Age

Age Group	Total Occupants			Fatalities			A - Suspected Serious			B - Suspected Minor			C - Possible Injury			No Injury		
	Total	Used Restraint	%	Total	Used Restraint	%	Total	Used Restraint	%	Total	Used Restraint	%	Total	Used Restraint	%	Total	Used Restraint	%
0 - 15	57	45	78.9	1	1	100.0	10	6	60.0	13	11	84.6	25	20	80.0	8	7	87.5
16 - 20	626	599	95.7	0	0	0.0	14	13	92.9	43	32	74.4	67	61	91.0	502	493	98.2
21 - 24	510	481	94.3	2	0	0.0	16	11	68.8	30	21	70.0	43	40	93.0	419	409	97.6
25 - 64	3,599	3,422	95.1	9	5	55.6	77	55	71.4	117	87	74.4	205	188	91.7	3,185	3,085	96.9
65 +	690	666	96.5	5	3	60.0	18	13	72.2	30	27	90.0	48	47	97.9	588	576	98.0
Unknown	178	0	0.0	0	0	0.0	0	0	0.0	0	0	0.0	0	0	0.0	6	0	0.0
Total	5,660	5,213	92.1	17	9	52.9	135	98	72.6	233	178	76.4	388	356	91.8	4,708	4,570	97.1

Note: Restraint Use includes shoulder belt only used, lap belt only used, both lap and shoulder belts used, child restraint used, restraint failure, and helmet worn.

5-Year Trend - Restraint Use Among Drivers

Restraint Use	2012			2013			2014			2015			2016		
	Drivers	Fatal Drivers	Injured Drivers	Drivers	Fatal Drivers	Injured Drivers	Drivers	Fatal Drivers	Injured Drivers	Drivers	Fatal Drivers	Injured Drivers	Drivers	Fatal Drivers	Injured Drivers
No belts available	29	0	5	40	0	5	42	0	4	33	1	6	21	0	3
Shoulder belt only used	5	0	0	6	0	1	13	0	0	14	0	0	16	0	2
Lap belt only used	18	0	5	10	0	0	14	0	3	12	0	1	12	0	0
Both lap & shoulder belts used	4,444	5	416	4,571	4	421	4,734	6	406	4,383	3	345	4,955	3	418
No belts used	44	1	22	49	3	27	33	2	12	26	2	12	55	3	29
Child restraint used	0	0	0	0	0	0	0	0	0	0	0	0	0	0	0
Child restraint not used, unavailable or improper use	0	0	0	0	0	0	0	0	0	0	0	0	0	0	0
Restraint failure	1	0	0	1	0	0	0	0	0	0	0	0	2	0	0
Restraint use unknown	157	2	23	154	1	17	142	0	14	161	1	17	246	1	24
Helmet worn	81	2	61	77	2	58	94	0	64	64	2	44	51	3	38
Helmet not worn	31	3	20	27	2	16	29	3	20	21	3	15	32	2	25
Helmet use unknown	2	0	1	5	0	3	2	0	1	7	0	5	6	0	4
Uncoded & errors	84	0	0	101	0	0	88	0	0	97	0	1	46	0	0
Total	4,896	13	553	5,041	12	548	5,191	11	524	4,818	12	446	5,442	12	543

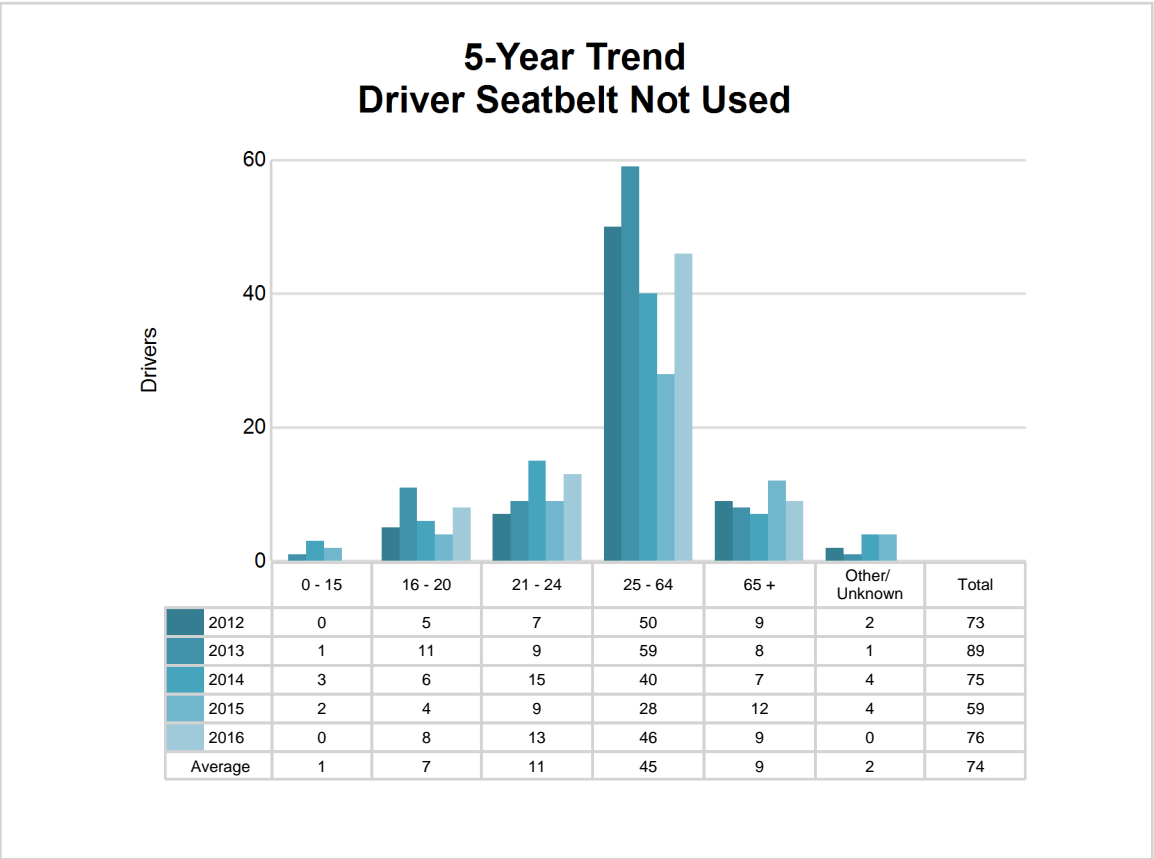
5-Year Trend - Restraint Use Among Drivers Coded Drinking

Restraint Use	2012			2013			2014			2015			2016		
	Drivers	Fatal Drivers	Injured Drivers	Drivers	Fatal Drivers	Injured Drivers	Drivers	Fatal Drivers	Injured Drivers	Drivers	Fatal Drivers	Injured Drivers	Drivers	Fatal Drivers	Injured Drivers
No belts available	2	0	1	1	0	0	4	0	1	1	1	0	1	0	1
Shoulder belt only used	0	0	0	1	0	1	0	0	0	0	0	0	0	0	0
Lap belt only used	1	0	1	1	0	0	2	0	1	0	0	0	0	0	0
Both lap & shoulder belts used	91	1	38	88	0	31	86	0	27	100	0	32	92	0	28
No belts used	11	0	9	15	1	9	7	2	4	6	1	4	16	1	13
Child restraint used	0	0	0	0	0	0	0	0	0	0	0	0	0	0	0
Child restraint not used, unavailable or improper use	0	0	0	0	0	0	0	0	0	0	0	0	0	0	0
Restraint failure	0	0	0	0	0	0	0	0	0	0	0	0	0	0	0
Restraint use unknown	39	1	16	23	0	6	20	0	6	18	0	10	20	0	6
Helmet worn	6	1	4	5	0	5	3	0	3	2	0	2	2	0	2
Helmet not worn	8	1	7	4	1	0	2	1	1	4	1	3	5	0	4
Helmet use unknown	0	0	0	0	0	0	0	0	0	0	0	0	0	0	0
Uncoded & errors	0	0	0	0	0	0	0	0	0	0	0	0	0	0	0
Total	158	4	76	138	2	52	124	3	43	131	3	51	136	1	54

5-Year Trend - Seatbelt Not Used Among Drivers by Age

Age Group	2012			2013			2014			2015			2016		
	Drivers	Fatal Drivers	Injured Drivers	Drivers	Fatal Drivers	Injured Drivers	Drivers	Fatal Drivers	Injured Drivers	Drivers	Fatal Drivers	Injured Drivers	Drivers	Fatal Drivers	Injured Drivers
0 - 15	0	0	0	1	0	0	3	0	0	2	0	1	0	0	0
16 - 20	5	0	1	11	0	6	6	0	2	4	0	2	8	0	4
21 - 24	7	0	7	9	0	6	15	1	4	9	1	3	13	2	8
25 - 64	50	1	17	59	1	16	40	1	8	28	1	9	46	1	15
65 +	9	0	2	8	2	4	7	0	2	12	1	2	9	0	5
Unknown	2	0	0	1	0	0	4	0	0	4	0	1	0	0	0
Total	73	1	27	89	3	32	75	2	16	59	3	18	76	3	32

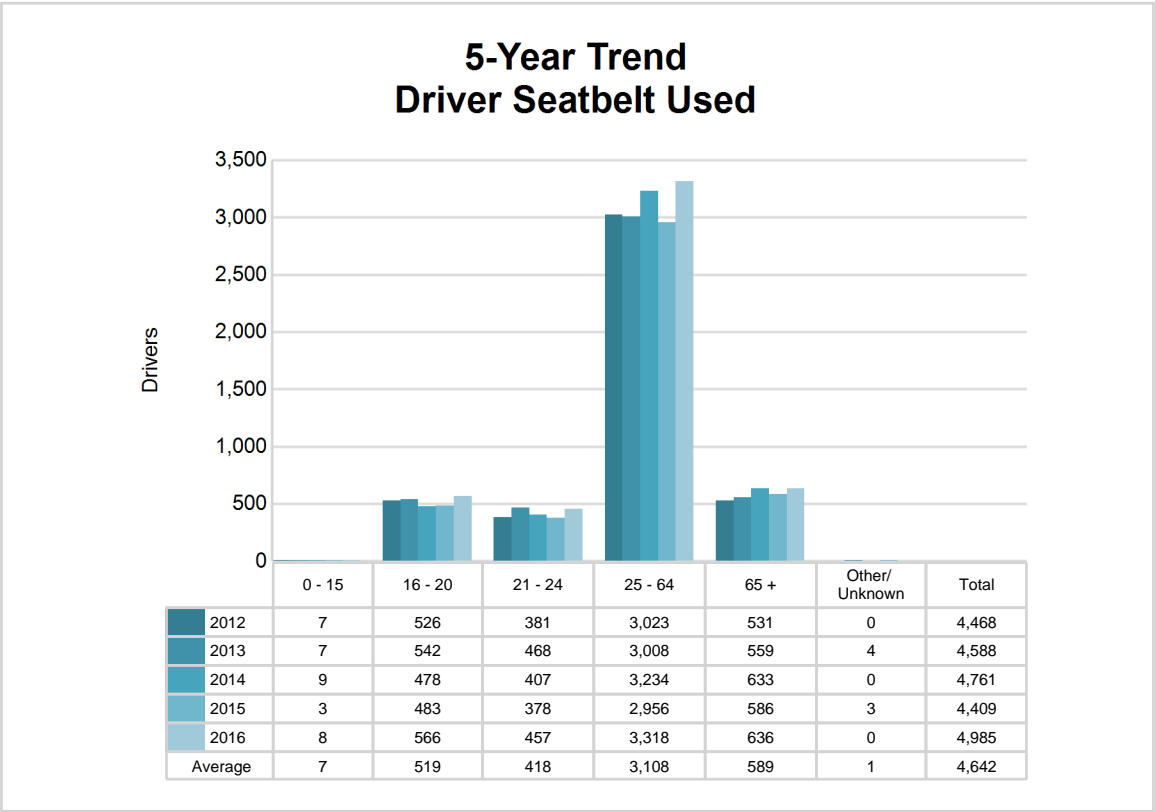
Note: Seatbelt Not Used includes no belts available or no belts used.



5-Year Trend - Seatbelt Used Among Drivers by Age

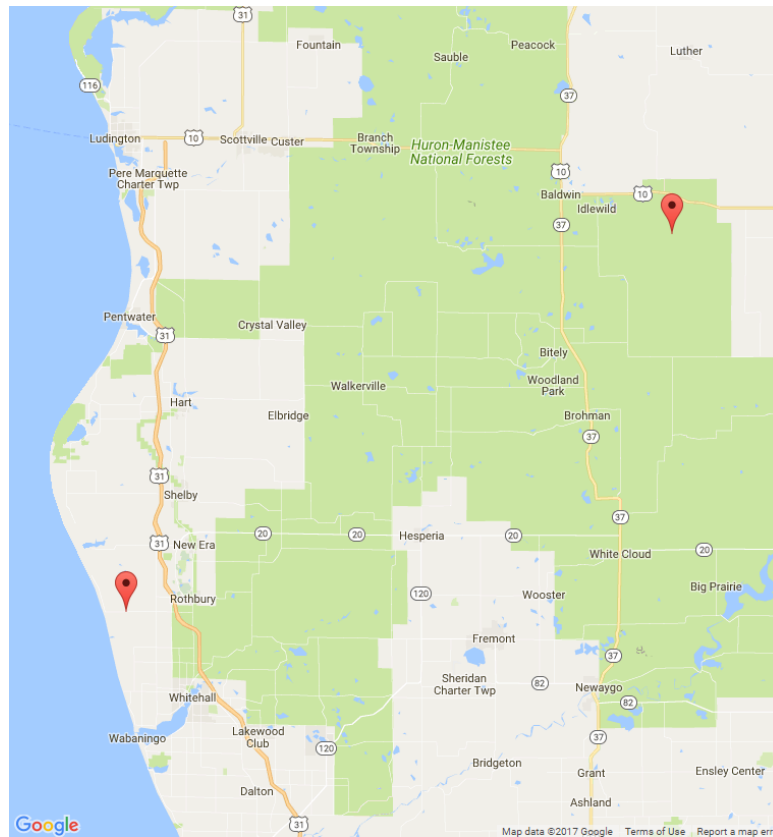
Age Group	2012			2013			2014			2015			2016		
	Drivers	Fatal Drivers	Injured Drivers	Drivers	Fatal Drivers	Injured Drivers	Drivers	Fatal Drivers	Injured Drivers	Drivers	Fatal Drivers	Injured Drivers	Drivers	Fatal Drivers	Injured Drivers
0 - 15	7	0	2	7	0	2	9	0	0	3	0	0	8	0	1
16 - 20	526	0	64	542	0	87	478	1	52	483	2	53	566	0	74
21 - 24	381	0	54	468	0	57	407	1	42	378	0	29	457	0	49
25 - 64	3,023	3	241	3,008	2	222	3,234	3	250	2,956	0	217	3,318	2	236
65 +	531	2	60	559	2	54	633	1	65	586	1	47	636	1	60
Unknown	0	0	0	4	0	0	0	0	0	3	0	0	0	0	0
Total	4,468	5	421	4,588	4	422	4,761	6	409	4,409	3	346	4,985	3	420

Note: Seatbelt Used includes shoulder belt only used, lap belt only used, both lap and shoulder belts used, and restraint failure.



5-Year Trend - Drivers in Crashes by Hazardous Action

Hazardous Action	2012		2013		2014		2015		2016	
	Total Drivers in Crashes	Drivers in Fatal Crashes	Total Drivers in Crashes	Drivers in Fatal Crashes	Total Drivers in Crashes	Drivers in Fatal Crashes	Total Drivers in Crashes	Drivers in Fatal Crashes	Total Drivers in Crashes	Drivers in Fatal Crashes
None	3,246	9	3,283	11	3,293	11	3,222	9	3,600	15
Speed too fast	557	6	633	3	647	1	475	3	612	2
Speed too slow	1	0	3	0	4	0	4	0	2	0
Failed to yield	283	1	283	3	315	0	285	1	316	4
Disregard traffic control	63	2	52	1	56	1	51	1	60	1
Drove wrong way	1	0	5	0	2	0	2	0	1	0
Drove left of center	22	2	27	1	38	3	39	1	22	0
Improper passing	17	0	15	1	14	0	21	0	22	0
Improper lane use	24	0	28	0	27	0	29	0	32	1
Improper turn	28	0	22	0	40	1	26	0	28	1
Improper/no signal	7	0	4	0	8	0	8	0	11	0
Improper backing	61	0	55	0	57	0	48	0	80	0
Unable to stop in assured clear distance	236	0	253	0	336	0	256	0	296	0
Other	134	0	143	1	163	0	121	1	131	0
Unknown	73	2	85	0	79	2	74	2	96	3
Reckless driving	24	0	10	0	28	0	28	0	22	0
Careless/negligent driving	107	0	136	2	84	2	129	1	106	1
Uncoded & errors	12	0	4	0	0	0	0	0	5	0
Total	4,896	22	5,041	23	5,191	21	4,818	19	5,442	28



The picture above represents all 2016 alcohol-involved fatal crashes in Post 62.

In 2016, there were 137 alcohol-involved crashes in Post 62:

- 2 K - Fatal Crashes
- 18 A - Suspected Serious Injury Crashes
- 28 B - Suspected Minor Injury Crashes
- 13 C - Possible Injury Crashes
- 76 O - Property Damage Only/No Injury Crashes

Office of Highway Safety Planning

Physical Address:
7150 Harris Drive
Dimondale, Michigan 48821

Mailing Address:
P.O. Box 30634
Lansing, Michigan 48909

Phone: (517) 284-3112
Fax: (517) 284-3151

Find us on the web:
MichiganTrafficCrashFacts.org

