



Office of Highway Safety Planning

2016

October 2017

**MTCF**  
Michigan Traffic  
Crash Facts

# Michigan Traffic Crash Facts

## Reporting Criteria

Please pay particular attention to the wording when interpreting the three levels of data gathered for this report.

### Crash

The Crash Level analyzes data related to crash events and returns one result per crash.

Examples: Time, weather, and location.

### Units

The Units Level analyzes the experience of the units in the crash and returns one result per vehicle, driver, pedestrian, bicyclist, or train.

Examples: Vehicle type, driver condition, and unit events.

### People

The People Level analyzes the experience of the people involved in the crash and returns one result per occupant/person/party.

Examples: Age, injury severity, and seat belt or helmet use.

### **KABCO Injury Indicator:**

K = Killed

A = Suspected Serious Injury

B = Suspected Minor Injury

C = Possible Injury

O = No Injury

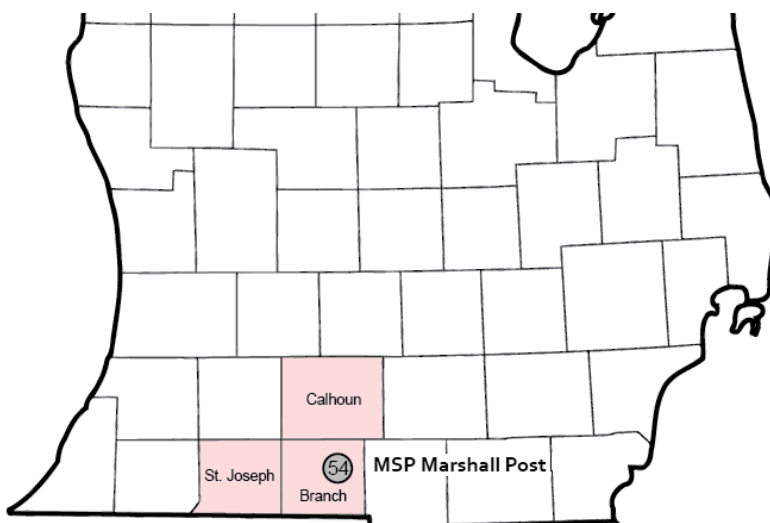
Property Damage Only (PDO)



## Michigan State Police (MSP) Post 54 - Marshall

### 2016 Traffic Crash Data & 2012-2016 5-Year Trends

Post 54 is comprised of Branch, Calhoun, and St. Joseph counties.  
Trend tables for this report are based on those counties.



### Sources:

The crashes in this report occurred on public roadways in Michigan and resulted in injuries, fatalities, or property damage (with \$1,000 as a reporting threshold). The information was gathered from Michigan Traffic Crash Report Forms (UD-10) submitted by local police departments, sheriff's offices, and the Michigan State Police. Other related information was obtained from the departments of Transportation, State, and Community Health.

This page left intentionally blank

## **MSP Post 54 - Marshall**

- There were 8,015 crashes in Post 54 during 2016. [Page 1]
- There were 46 fatalities in 44 fatal crashes in 2016 in Post 54. [Page 1]
- A total of 1,643 injuries resulted from 1,194 injury crashes. [Page 1]
- There were 6,777 property damage only crashes (no fatalities or injuries). [Page 1]
- December had the highest number of crashes (954). [Pages 1-2]
- October had the highest number of fatal crashes (7) and fatalities (7). [Pages 1-2]
- August had the highest number of injury crashes (127) and the highest number of injuries (162). [Page 1]
- December had the highest number of property damage only crashes (838). [Page 1]
- Of all vehicles involved in fatal crashes, five (7.1%) were motorcycles. [Page 1]
- Friday was the day of the week with the highest number of crashes (1,387) and Saturday had the highest number of fatal crashes (9). [Pages 2-3]
- The 3:00 PM – 5:59 PM time period had the highest number of crashes (1,618). This is true for each year from 2012 to 2016. The noon – 2:59 PM time period had the highest number of fatal crashes (13). [Pages 5-6]
- During the period from 2012 to 2016, the highest number of deer crashes occurred in 2013 (2,328). There were no fatal crashes involving deer in 2016. [Pages 7-8]
- Calhoun County (59.1%) had the highest number of crashes in Post 54 in 2016, followed by St. Joseph County (20.9%), and Branch County (20.0%). [Page 8]
- Calhoun County (56.5%) had the highest number of fatalities in Post 54 in 2016, followed by St. Joseph County (23.9%), and Branch County (19.6%). [Page 8]
- The highest number of drivers in crashes (11,904) occurred during 2016 within the five-year period. The highest number of drivers coded drinking in crashes (291) occurred during 2013. [Page 9]
- A total of 272 crashes involved alcohol in 2016, but 2013 had the highest number of alcohol-involved crashes, with 298. [Page 10]
- Alcohol-involved fatal crashes were the highest in 2012 and 2016 during the five-year period from 2012 to 2016 at 11 each year. [Page 10]
- A total of 88 crashes and 10 fatal crashes involved drugs in 2016, both the highest during the five-year period. There were 10 suspected serious injury crashes involving drugs in 2016. [Page 11]
- There were 10,480 drivers wearing seatbelts and 112 drivers not wearing seatbelts in crashes in 2016. Of the 112 drivers not wearing seat belts, nine (8.0%) were killed and 34 (30.4%) were injured. [Pages 14-16]
- The most common hazardous action coded for drivers in 2016 in all crashes was speed too fast (1,183), while the most common hazardous action coded for drivers in fatal crashes was failed to yield (8). [Page 17]

## Post 54 Experience

In 2016:

There were 11,904 drivers involved in 8,015 motor vehicle crashes in MSP Post 54. Of those crashes, 44 were classified as fatal, resulting in 46 fatalities. An additional 1,643 persons were injured.

Post 54 experienced the highest number of motor vehicle crashes (954) in December, the highest number of fatal crashes (7) and the highest number of persons killed (7) in October.

Michigan driver statistics indicate 6.2 percent of licensed drivers in Post 54 were age 16-20, and 10.3 percent of drivers in crashes were also in that age group.

## 2016 - Crashes and Injuries by Month

Month	Crashes				Persons	
	Total	Fatal	Injury	Property Damage Only (PDO)	Fatalities	Injuries
January	779	4	82	693	5	113
February	693	3	96	594	3	128
March	600	0	75	525	0	107
April	500	6	78	416	6	100
May	614	3	96	515	3	119
June	561	2	109	450	2	157
July	556	6	112	438	6	159
August	581	2	127	452	2	162
September	592	4	107	481	5	154
October	742	7	111	624	7	161
November	843	2	90	751	2	131
December	954	5	111	838	5	152
<b>Total</b>	<b>8,015</b>	<b>44</b>	<b>1,194</b>	<b>6,777</b>	<b>46</b>	<b>1,643</b>

## 2016 - Driver Statistics

Age Group	Statewide			Driver Rates	
	2016 Population	Licensed Drivers	Drivers in Crashes	Per 10k Population	Per 10k Licensed
0 - 15	49,787	1,081	27	5.4	249.8
16 - 20	15,195	10,275	1,228	808.2	1,195.1
21 - 24	11,820	9,926	1,003	848.6	1,010.5
25 - 64	120,982	108,888	7,477	618.0	686.7
65 +	40,882	36,400	1,371	335.4	376.6
Unknown	0	0	798	--	--
<b>Total</b>	<b>238,666</b>	<b>166,570</b>	<b>11,904</b>	<b>498.8</b>	<b>714.7</b>

## 2016 - Vehicles in Crashes

Vehicle Type	Motor Vehicles		Fatal Crashes		Injury Crashes	PDO Crashes
	Number of Vehicles	% of Total	Number	% of Total	Number	Number
Passenger car, SUV, van	9,053	76.1	42	60.0	1,435	7,576
Motor home	205	1.7	1	1.4	50	154
Pickup truck	1,756	14.8	12	17.1	288	1,456
Small truck under 10,000 lbs. GVWR	125	1.1	0	0.0	21	104
Motorcycle	107	0.9	5	7.1	79	23
Moped / goped	22	0.2	1	1.4	15	6
Go-cart / golf cart	0	0.0	0	0.0	0	0
Snowmobile	0	0.0	0	0.0	0	0
Off-Road Vehicle - ORV / All-Terrain Vehicle - ATV	5	0.0	0	0.0	3	2
Other	67	0.6	0	0.0	11	56
Truck/bus over 10,000 lbs.	388	3.3	9	12.9	60	319
Unknown	176	1.5	0	0.0	10	166
<b>Total</b>	<b>11,904</b>	<b>100.0</b>	<b>70</b>	<b>100.0</b>	<b>1,972</b>	<b>9,862</b>

## MSP Post 54 - Marshall (continued)

### 5-Year Trend - Crashes by Month

Month	2012		2013		2014		2015		2016	
	Total Crashes	Fatal Crashes	Total Crashes	Fatal Crashes	Total Crashes	Fatal Crashes	Total Crashes	Fatal Crashes	Total Crashes	Fatal Crashes
January	818	2	763	3	1,095	0	877	2	779	4
February	695	2	721	1	730	3	673	2	693	3
March	563	1	560	2	661	3	586	2	600	0
April	463	1	482	2	392	4	478	2	500	6
May	592	1	609	3	516	3	522	2	614	3
June	558	3	555	5	528	5	614	5	561	2
July	494	5	575	1	539	2	604	3	556	6
August	471	0	522	2	473	2	493	3	581	2
September	493	0	549	3	501	1	551	4	592	4
October	655	2	720	4	783	2	749	3	742	7
November	721	5	921	2	1,027	1	972	1	843	2
December	791	2	966	1	585	1	802	2	954	5
<b>Total</b>	<b>7,314</b>	<b>24</b>	<b>7,943</b>	<b>29</b>	<b>7,830</b>	<b>27</b>	<b>7,921</b>	<b>31</b>	<b>8,015</b>	<b>44</b>

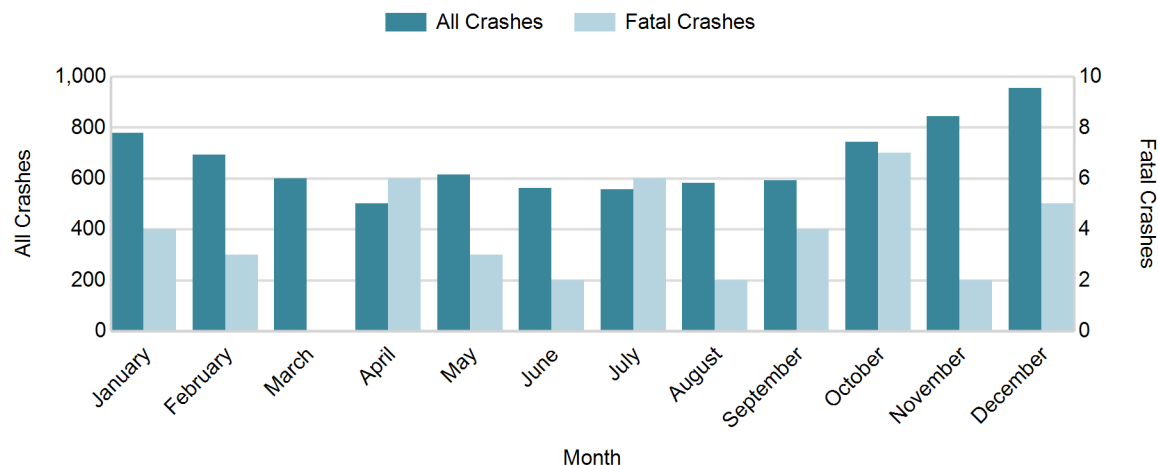
Note: † Indicates that the highest number of total crashes reported in the 5-year period occurred in the same month

### 5-Year Trend - Crashes by Day of Week

Day	2012		2013		2014		2015		2016	
	Total Crashes	Fatal Crashes	Total Crashes	Fatal Crashes	Total Crashes	Fatal Crashes	Total Crashes	Fatal Crashes	Total Crashes	Fatal Crashes
Monday	1,086	2	1,222	2	1,045	1	1,127	4	1,092	5
Tuesday	965	1	1,205	3	1,084	2	1,076	1	1,165	6
Wednesday	965	4	1,211	4	1,196	5	1,169	5	1,212	5
Thursday	1,010	6	1,117	4	1,333	3	1,144	5	1,238	6
Friday	1,347	5	1,264	5	1,273	2	1,350	6	1,387	7
Saturday	1,062	1	1,053	5	1,038	9	1,209	3	1,038	9
Sunday	879	5	871	6	861	5	846	7	883	6
<b>Total</b>	<b>7,314</b>	<b>24</b>	<b>7,943</b>	<b>29</b>	<b>7,830</b>	<b>27</b>	<b>7,921</b>	<b>31</b>	<b>8,015</b>	<b>44</b>

Note: † Indicates that the highest number of total crashes reported in the 5-year period occurred on the same day of the week

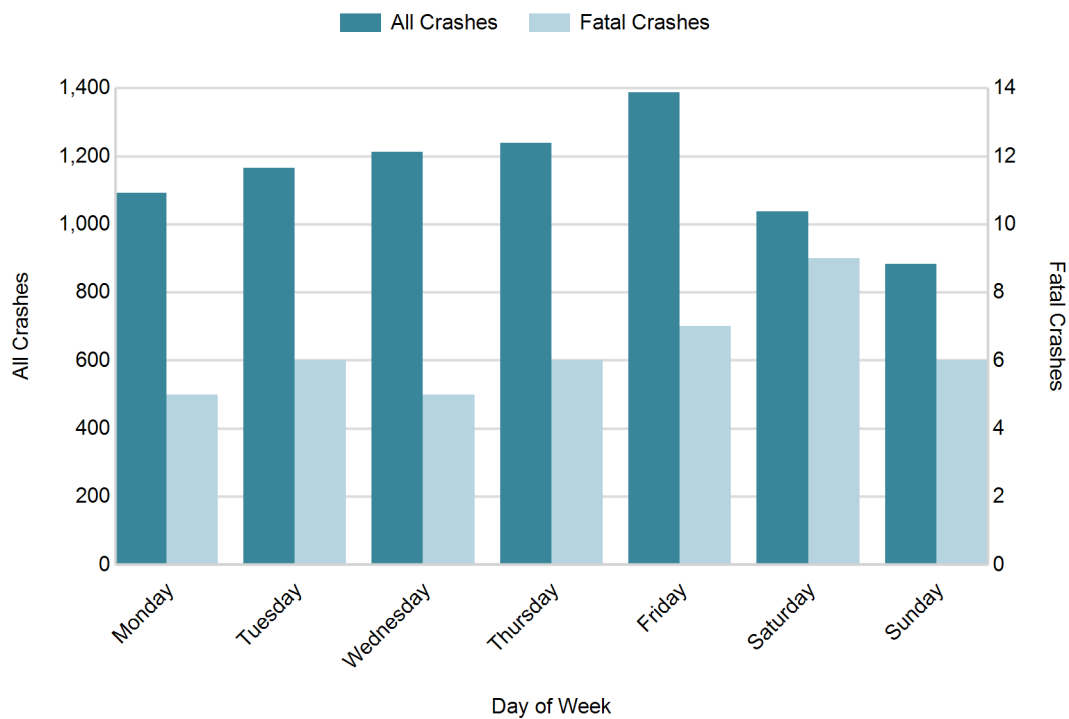
### 2016 Crashes by Month



## 2016 - Crashes by Day of Week

Day	All Crashes		Fatal Crashes		Injury Crashes			PDO Crashes
	Number	% of Total	Number	% of Fatal	A	B	C	Number
Monday	1,092	13.6	5	11.4	14	61	83	929
Tuesday	1,165	14.5	6	13.6	20	58	95	986
Wednesday	1,212	15.1	5	11.4	15	69	98	1,025
Thursday	1,238	15.4	6	13.6	19	54	101	1,058
Friday	1,387	17.3	7	15.9	19	85	110	1,166
Saturday	1,038	13.0	9	20.5	19	64	78	868
Sunday	883	11.0	6	13.6	17	53	62	745
<b>Total</b>	<b>8,015</b>	<b>100.0</b>	<b>44</b>	<b>100.0</b>	<b>123</b>	<b>444</b>	<b>627</b>	<b>6,777</b>

## 2016 Day of Week and Severity

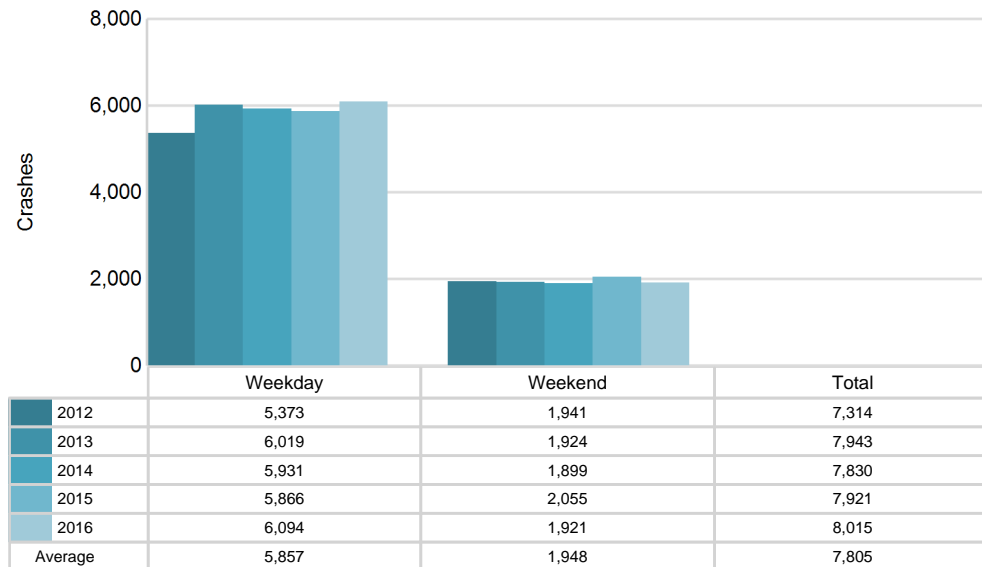


## MSP Post 54 - Marshall (continued)

### 5-Year Trend - Crashes by Weekday and Weekend

Portion of Week	2012		2013		2014		2015		2016	
	Total Crashes	Fatal Crashes	Total Crashes	Fatal Crashes	Total Crashes	Fatal Crashes	Total Crashes	Fatal Crashes	Total Crashes	Fatal Crashes
Weekday	5,373	18	6,019	18	5,931	13	5,866	21	6,094	29
Weekend	1,941	6	1,924	11	1,899	14	2,055	10	1,921	15
<b>Total</b>	<b>7,314</b>	<b>24</b>	<b>7,943</b>	<b>29</b>	<b>7,830</b>	<b>27</b>	<b>7,921</b>	<b>31</b>	<b>8,015</b>	<b>44</b>

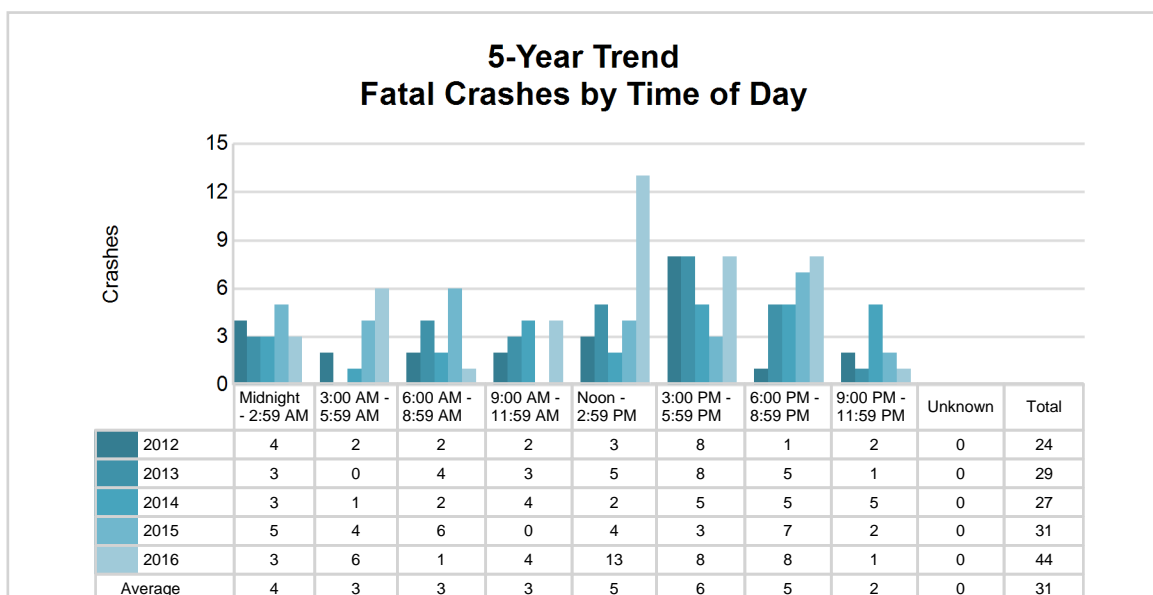
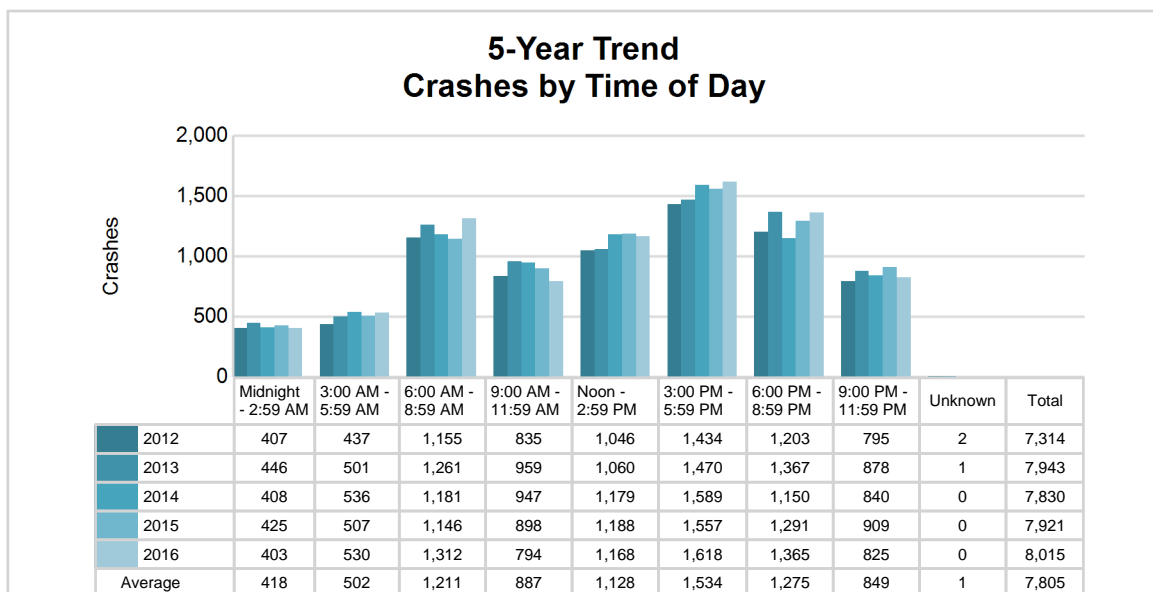
### 5-Year Crash Trends by Weekday (Monday - Friday) and Weekend (Saturday & Sunday)



## 5-Year Trend - Crashes by Time of Day

Time of Day	2012		2013		2014		2015		2016	
	Total Crashes	Fatal Crashes	Total Crashes	Fatal Crashes	Total Crashes	Fatal Crashes	Total Crashes	Fatal Crashes	Total Crashes	Fatal Crashes
Midnight - 2:59 AM	407	4	446	3	408	3	425	5	403	3
3:00 AM - 5:59 AM	437	2	501	0	536	1	507	4	530	6
6:00 AM - 8:59 AM	1,155	2	1,261	4	1,181	2	1,146	6	1,312	1
9:00 AM - 11:59 AM	835	2	959	3	947	4	898	0	794	4
Noon - 2:59 PM	1,046	3	1,060	5	1,179	2	1,188	4	1,168	13
3:00 PM - 5:59 PM	1,434 †	8	1,470 †	8	1,589 †	5	1,557 †	3	1,618 †	8
6:00 PM - 8:59 PM	1,203	1	1,367	5	1,150	5	1,291	7	1,365	8
9:00 PM - 11:59 PM	795	2	878	1	840	5	909	2	825	1
Unknown	2	0	1	0	0	0	0	0	0	0
<b>Total</b>	<b>7,314</b>	<b>24</b>	<b>7,943</b>	<b>29</b>	<b>7,830</b>	<b>27</b>	<b>7,921</b>	<b>31</b>	<b>8,015</b>	<b>44</b>

Note: † Indicates that the highest number of total crashes reported in the 5-year period occurred in the same time period

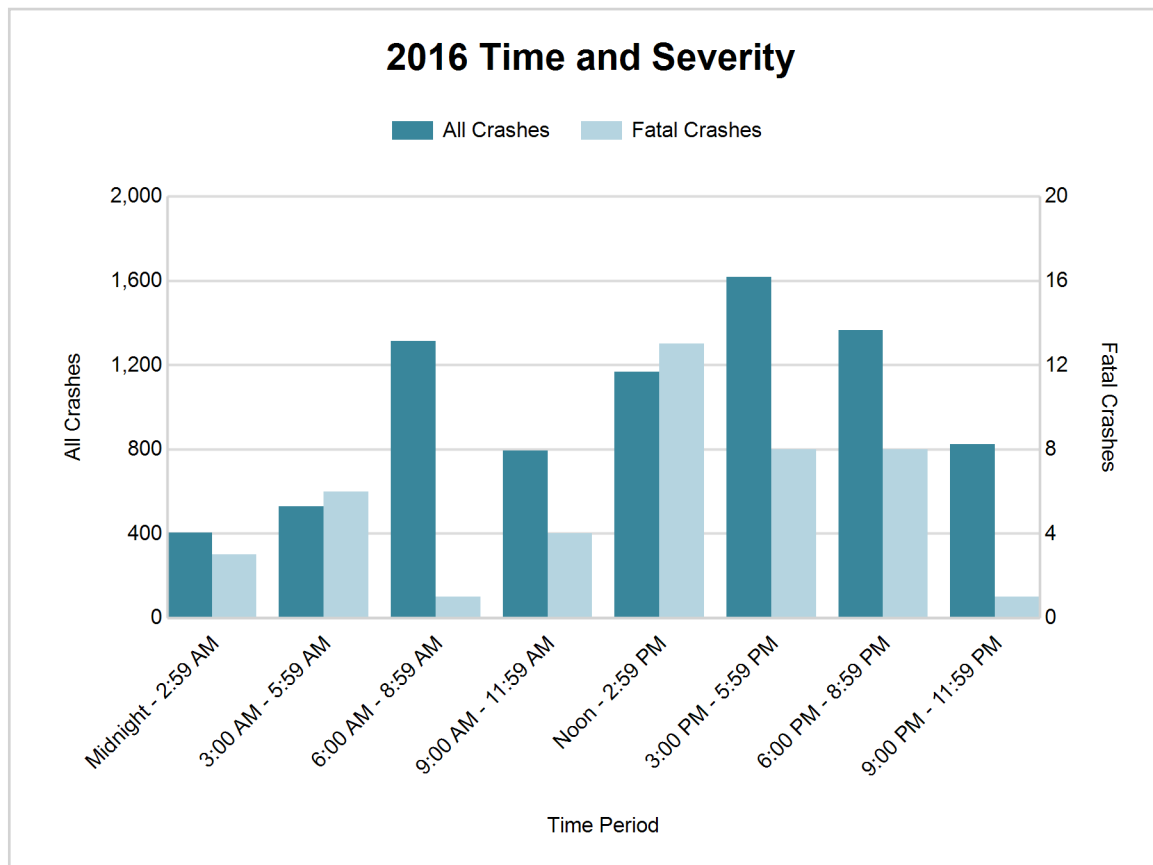




# MSP Post 54 - Marshall (continued)

## 2016 - Time and Severity

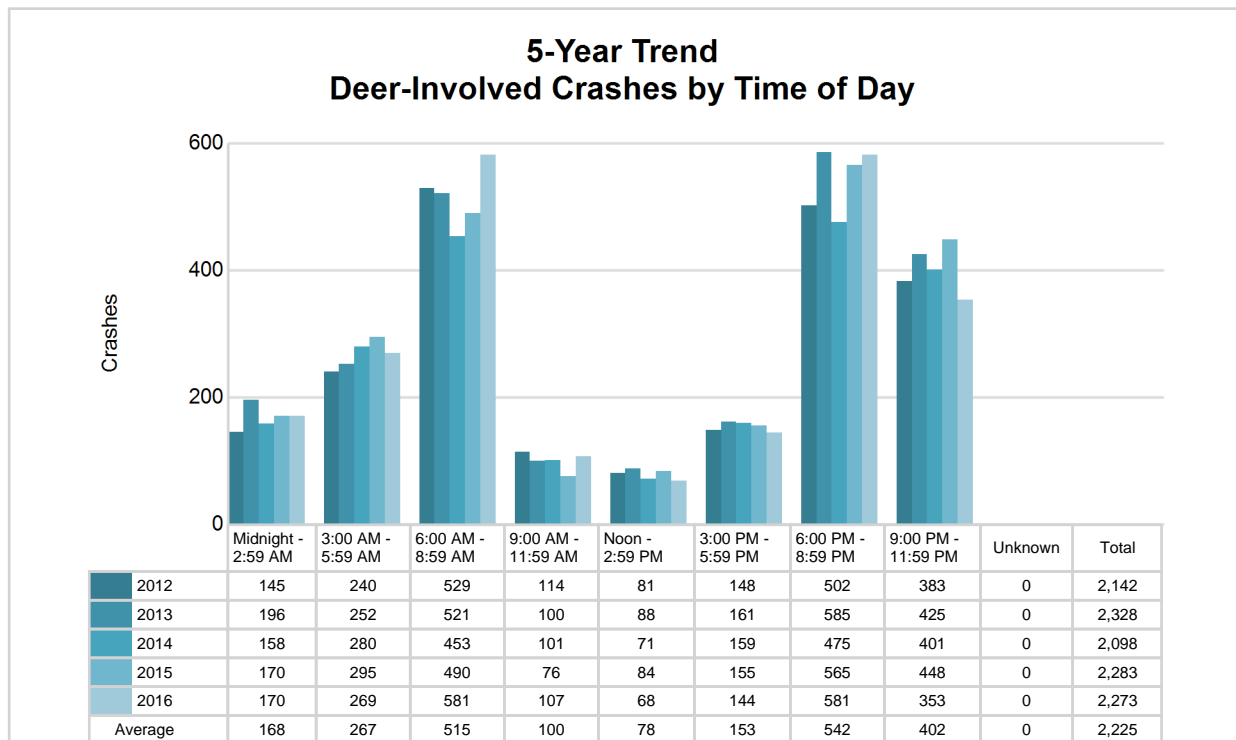
Time of Day	All Crashes		Fatal Crashes		Injury Crashes			PDO Crashes
	Number	% of Total	Number	% of Fatal	A	B	C	Number
Midnight - 2:59 AM	403	5.0	3	6.8	7	21	25	347
3:00 AM - 5:59 AM	530	6.6	6	13.6	4	27	22	471
6:00 AM - 8:59 AM	1,312	16.4	1	2.3	17	61	80	1,153
9:00 AM - 11:59 AM	794	9.9	4	9.1	13	50	74	653
Noon - 2:59 PM	1,168	14.6	13	29.5	22	70	115	948
3:00 PM - 5:59 PM	1,618	20.2	8	18.2	29	115	167	1,299
6:00 PM - 8:59 PM	1,365	17.0	8	18.2	16	65	92	1,184
9:00 PM - 11:59 PM	825	10.3	1	2.3	15	35	52	722
Unknown	0	0.0	0	0.0	0	0	0	0
<b>Total</b>	<b>8,015</b>	<b>100.0</b>	<b>44</b>	<b>100.0</b>	<b>123</b>	<b>444</b>	<b>627</b>	<b>6,777</b>

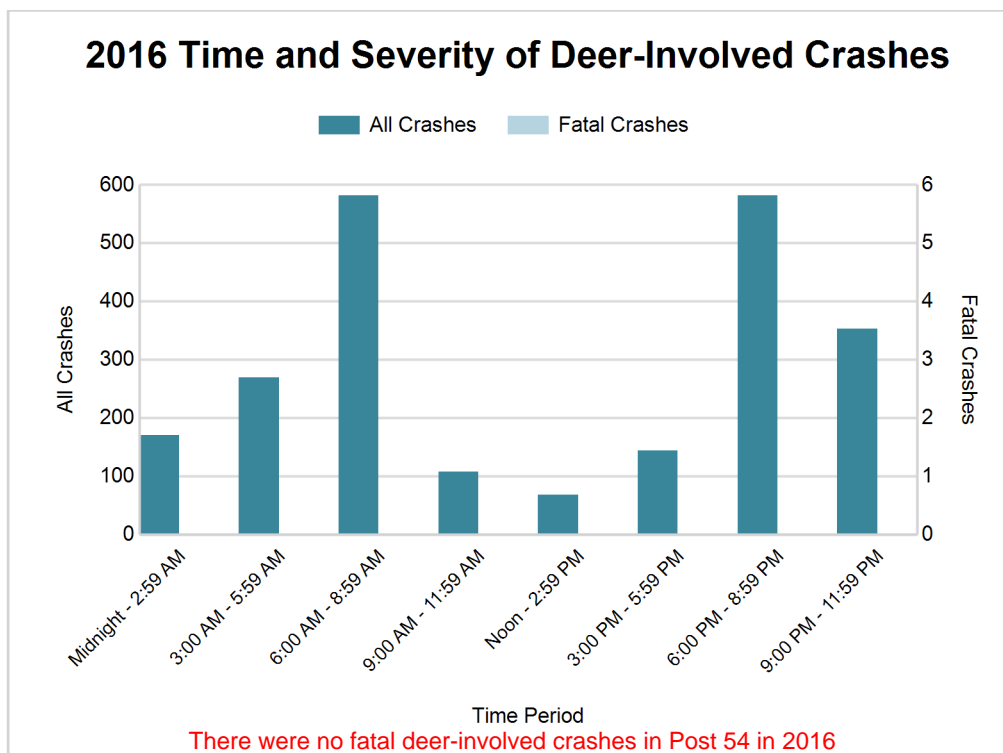


## 5-Year Trend - Deer-Involved Crashes by Time of Day

Time of Day	2012		2013		2014		2015		2016	
	Total Crashes	Fatal Crashes	Total Crashes	Fatal Crashes	Total Crashes	Fatal Crashes	Total Crashes	Fatal Crashes	Total Crashes	Fatal Crashes
Midnight - 2:59 AM	145	0	196	0	158	0	170	0	170	0
3:00 AM - 5:59 AM	240	0	252	0	280	0	295	0	269	0
6:00 AM - 8:59 AM	529	0	521	0	453	0	490	0	581	0
9:00 AM - 11:59 AM	114	0	100	0	101	0	76	0	107	0
Noon - 2:59 PM	81	0	88	0	71	0	84	0	68	0
3:00 PM - 5:59 PM	148	0	161	0	159	0	155	0	144	0
6:00 PM - 8:59 PM	502	0	585	0	475	0	565	0	581	0
9:00 PM - 11:59 PM	383	0	425	0	401	0	448	0	353	0
Unknown	0	0	0	0	0	0	0	0	0	0
<b>Total</b>	<b>2,142</b>	<b>0</b>	<b>2,328</b>	<b>0</b>	<b>2,098</b>	<b>0</b>	<b>2,283</b>	<b>0</b>	<b>2,273</b>	<b>0</b>

Note: † Indicates that the highest number of total crashes reported in the 5-year period occurred in the same time period





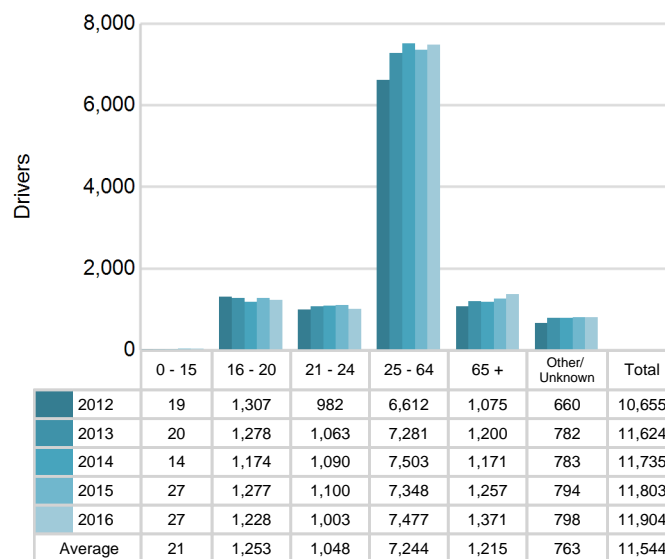
#### 2016 - Reported Motor Vehicle Crashes by County

County	Crashes											Persons	
	Total	Fatal	Injury	Property Damage	Inter-state	US Route	State Route	Local Street	Alcohol-Involved	Drug-Involved	Deer-Involved	Fatalities	Injuries
Branch	1,605	8	199	1,398	159	389	83	971	28	8	761	9	269
Calhoun	4,734	25	694	4,015	1,165	0	1,244	2,318	171	60	1,056	26	947
St. Joseph	1,676	11	301	1,364	0	374	406	891	73	20	456	11	427
<b>Total</b>	<b>8,015</b>	<b>44</b>	<b>1,194</b>	<b>6,777</b>	<b>1,324</b>	<b>763</b>	<b>1,733</b>	<b>4,180</b>	<b>272</b>	<b>88</b>	<b>2,273</b>	<b>46</b>	<b>1,643</b>

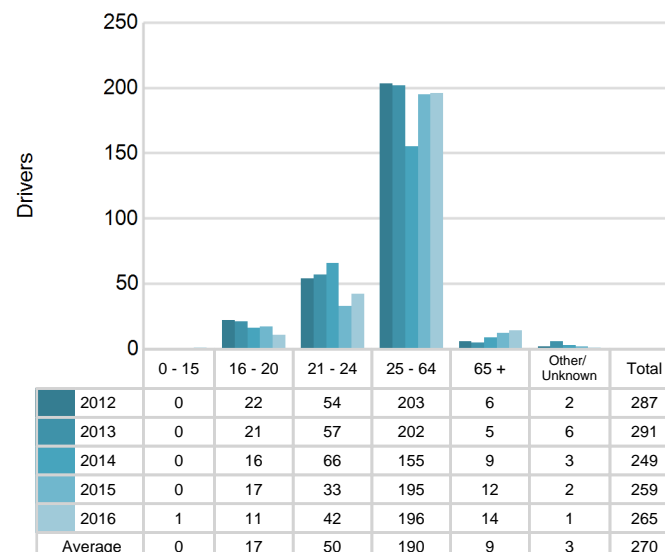
## 5-Year Trend - Drivers in Crashes Coded Drinking by Driver Age

Driver Age	2012		2013		2014		2015		2016	
	Total Drivers in Crashes	Total Drivers Coded Drinking	Total Drivers in Crashes	Total Drivers Coded Drinking	Total Drivers in Crashes	Total Drivers Coded Drinking	Total Drivers in Crashes	Total Drivers Coded Drinking	Total Drivers in Crashes	Total Drivers Coded Drinking
0 - 15	19	0	20	0	14	0	27	0	27	1
16 - 20	1,307	22	1,278	21	1,174	16	1,277	17	1,228	11
21 - 24	982	54	1,063	57	1,090	66	1,100	33	1,003	42
25 - 64	6,612	203	7,281	202	7,503	155	7,348	195	7,477	196
65 +	1,075	6	1,200	5	1,171	9	1,257	12	1,371	14
Unknown	660	2	782	6	783	3	794	2	798	1
<b>Total</b>	<b>10,655</b>	<b>287</b>	<b>11,624</b>	<b>291</b>	<b>11,735</b>	<b>249</b>	<b>11,803</b>	<b>259</b>	<b>11,904</b>	<b>265</b>

**5-Year Trend  
Total Drivers in Crashes by Age**



**5-Year Trend  
Total Drivers Coded Drinking by Age**



**2016 - Bodily Alcohol Concentration (BAC) Results Among All Vehicle Drivers in Alcohol-Involved Crashes by Age**

Age Group	Drivers				BAC Result Range for Drivers Coded Drinking				
	Total Drivers in Alcohol-Involved Crashes	Total Drivers Tested in all Crashes	Total Drivers Coded Drinking, Tested	Total Drivers Coded Drinking	BAC = 0.00	BAC 0.01 g/dL to 0.07 g/dL	BAC 0.08 g/dL to 0.16 g/dL	BAC 0.17 g/dL and Above	BAC Not Reported
0 - 15	2	1	1	1	0	1	0	0	0
16 - 20	18	18	8	11	0	1	2	1	7
21 - 24	49	44	38	42	4	2	13	7	16
25 - 64	252	237	172	196	11	10	41	53	81
65 +	18	23	13	14	0	3	5	2	4
Unknown	15	0	0	1	0	0	0	0	1
<b>Total</b>	<b>354</b>	<b>323</b>	<b>232</b>	<b>265</b>	<b>15</b>	<b>17</b>	<b>61</b>	<b>63</b>	<b>109</b>

Notes: BAC measured in grams (g) per deciliter (dL).

BAC may not be reported if drivers are not tested or if the results are not available immediately (as in the case of a blood test).

A driver may be coded by the officer as drinking even though no test is administered.

**Alcohol-Involved Crashes**

In 2016, there were 354 drivers in alcohol-involved crashes; 265 (74.9%) of those drivers were coded as had-been-drinking by the officer on the crash form.

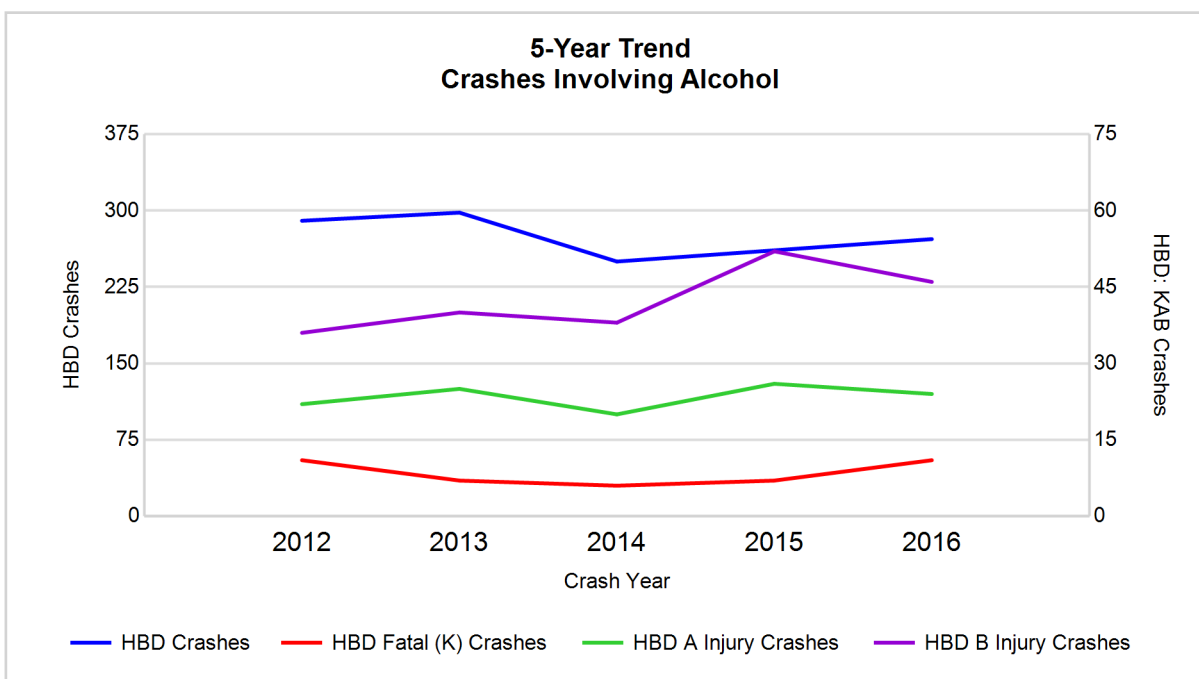
- 124 (46.8%) of the 265 drivers had a blood alcohol concentration (BAC) of 0.08 g/dL (grams per deciliter) or greater, and 63 (50.8%) of the 124 drivers had a BAC at or above 0.17 g/dL.
- 232 (87.5%) of the 265 drivers were coded as had-been-drinking and were tested for alcohol consumption.

**5-Year Trend - Crashes Involving Alcohol**

Year	All Crashes	HBD Crashes	% HBD	Fatal Crashes	HBD Fatal Crashes	% HBD	A Injury Crashes	HBD A Injury Crashes	% HBD	B Injury Crashes	HBD B Injury Crashes	% HBD
2012	7,314	290	4.0	24	11	45.8	119	22	18.5	361	36	10.0
2013	7,943	298	3.8	29	7	24.1	138	25	18.1	347	40	11.5
2014	7,830	250	3.2	27	6	22.2	113	20	17.7	351	38	10.8
2015	7,921	261	3.3	31	7	22.6	126	26	20.6	425	52	12.2
2016	8,015**	272	3.4	44**	11	25.0	123	24	19.5	444**	46	10.4

Note: \* Indicates that the most recent year is the lowest number or percentage reported in the 5-year period in that column

\*\* Indicates that the most recent year is the highest number or percentage reported in the 5-year period in that column



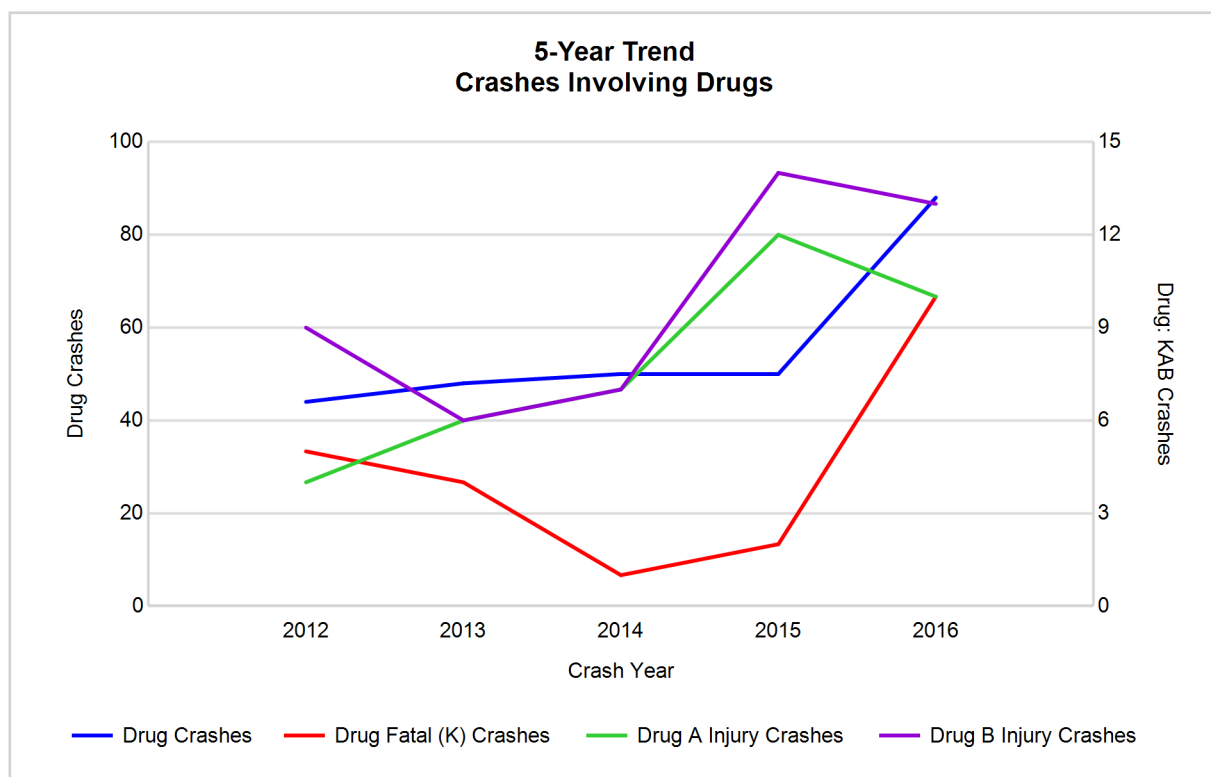
Note: Had-Been-Drinking (HBD)

## 5-Year Trend - Crashes Involving Drugs

Year	All Crashes	Drug Crashes	% Drug	Fatal Crashes	Drug Fatal Crashes	% Drug	A Injury Crashes	Drug A Injury Crashes	% Drug	B Injury Crashes	Drug B Injury Crashes	% Drug
2012	7,314	44	0.6	24	5	20.8	119	4	3.4	361	9	2.5
2013	7,943	48	0.6	29	4	13.8	138	6	4.3	347	6	1.7
2014	7,830	50	0.6	27	1	3.7	113	7	6.2	351	7	2.0
2015	7,921	50	0.6	31	2	6.5	126	12	9.5	425	14	3.3
2016	8,015**	88**	1.1**	44**	10**	22.7**	123	10	8.1	444**	13	2.9

Note: \* Indicates that the most recent year is the lowest number or percentage reported in the 5-year period in that column

\*\* Indicates that the most recent year is the highest number or percentage reported in the 5-year period in that column

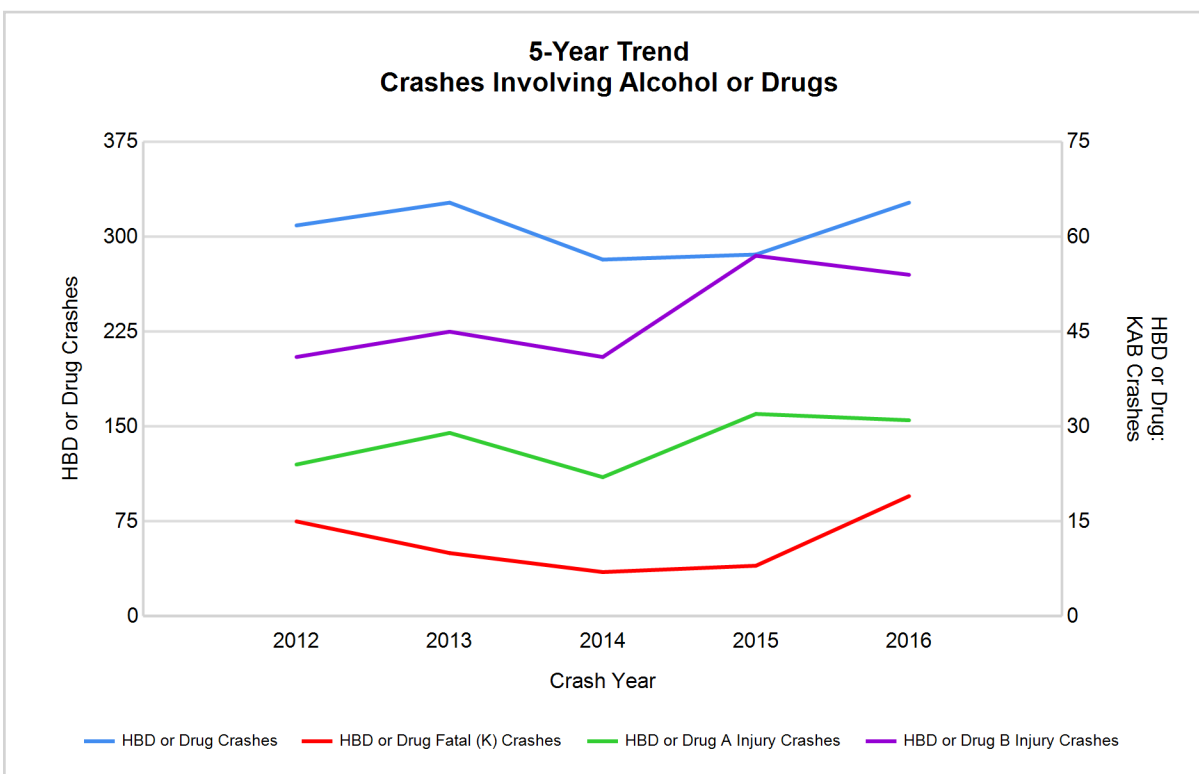


## 5-Year Trend - Crashes Involving Alcohol or Drugs

Year	All Crashes	HBD or Drug Crashes	% HBD or Drug	Fatal Crashes	HBD or Drug Fatal Crashes	% HBD or Drug	A Injury Crashes	HBD or Drug A Injury Crashes	% HBD or Drug	B Injury Crashes	HBD or Drug B Injury Crashes	% HBD or Drug
2012	7,314	309	4.2	24	15	62.5	119	24	20.2	361	41	11.4
2013	7,943	327	4.1	29	10	34.5	138	29	21.0	347	45	13.0
2014	7,830	282	3.6	27	7	25.9	113	22	19.5	351	41	11.7
2015	7,921	286	3.6	31	8	25.8	126	32	25.4	425	57	13.4
2016	8,015**	327	4.1	44**	19**	43.2	123	31	25.2	444**	54	12.2

Note: \* Indicates that the most recent year is the lowest number or percentage reported in the 5-year period in that column

\*\* Indicates that the most recent year is the highest number or percentage reported in the 5-year period in that column



Note: Had-Been-Drinking (HBD)

## 2016 - Restraints Worn Among Vehicle Drivers and Injured Passengers by Vehicle Type

Vehicle Type	Total Occupants			Fatalities			A - Suspected Serious			B - Suspected Minor			C - Possible Injury			No Injury		
	Total	Used Restraint	%	Total	Used Restraint	%	Total	Used Restraint	%	Total	Used Restraint	%	Total	Used Restraint	%	Total	Used Restraint	%
Passenger car, SUV, van	9,418	8,487	90.1	26	18	69.2	89	75	84.3	389	344	88.4	725	670	92.4	7,814	7,379	94.4
Motor home	221	197	89.1	0	0	0.0	0	0	0.0	19	16	84.2	19	17	89.5	170	164	96.5
Pickup truck	1,789	1,634	91.3	8	3	37.5	23	17	73.9	67	61	91.0	88	84	95.5	1,546	1,469	95.0
Small truck under 10,000 lbs. GVWR	135	121	89.6	0	0	0.0	0	0	0.0	6	6	100.0	12	11	91.7	113	104	92.0
Motorcycle	116	69	59.5	5	3	60.0	22	10	45.5	43	28	65.1	16	11	68.8	29	17	58.6
Moped / goped	22	4	18.2	1	0	0.0	3	0	0.0	7	1	14.3	5	1	20.0	6	2	33.3
Go-cart / golf cart	0	0	0.0	0	0	0.0	0	0	0.0	0	0	0.0	0	0	0.0	0	0	0.0
Snowmobile	0	0	0.0	0	0	0.0	0	0	0.0	0	0	0.0	0	0	0.0	0	0	0.0
Off-Road Vehicle - ORV / All-Terrain Vehicle - ATV	6	1	16.7	0	0	0.0	2	0	0.0	1	0	0.0	0	0	0.0	2	1	50.0
Other	68	41	60.3	0	0	0.0	0	0	0.0	2	0	0.0	5	3	60.0	55	38	69.1
Truck/bus over 10,000 lbs.	394	367	93.1	0	0	0.0	6	5	83.3	9	7	77.8	12	12	100.0	358	343	95.8
Unknown	176	2	1.1	0	0	0.0	0	0	0.0	1	1	100.0	0	0	0.0	10	1	10.0
<b>Total</b>	<b>12,345</b>	<b>10,923</b>	<b>88.5</b>	<b>40</b>	<b>24</b>	<b>60.0</b>	<b>145</b>	<b>107</b>	<b>73.8</b>	<b>544</b>	<b>464</b>	<b>85.3</b>	<b>882</b>	<b>809</b>	<b>91.7</b>	<b>10,103</b>	<b>9,518</b>	<b>94.2</b>

Note: Restraint Use includes shoulder belt only used, lap belt only used, both lap and shoulder belts used, child restraint used, restraint failure, and helmet worn.

## 2016 - Restraints Worn Among Vehicle Drivers and Injured Passengers by Age

Age Group	Total Occupants			Fatalities			A - Suspected Serious			B - Suspected Minor			C - Possible Injury			No Injury		
	Total	Used Restraint	%	Total	Used Restraint	%	Total	Used Restraint	%	Total	Used Restraint	%	Total	Used Restraint	%	Total	Used Restraint	%
0 - 15	126	99	78.6	1	1	100.0	6	5	83.3	37	29	78.4	63	51	81.0	19	13	68.4
16 - 20	1,298	1,234	95.1	4	3	75.0	15	13	86.7	60	53	88.3	107	98	91.6	1,111	1,067	96.0
21 - 24	1,034	954	92.3	5	1	20.0	11	7	63.6	65	52	80.0	60	53	88.3	891	841	94.4
25 - 64	7,656	7,247	94.7	21	14	66.7	94	68	72.3	306	260	85.0	535	498	93.1	6,681	6,407	95.9
65 +	1,432	1,381	96.4	9	5	55.6	19	14	73.7	74	69	93.2	112	109	97.3	1,213	1,184	97.6
Unknown	799	8	1.0	0	0	0.0	0	0	0.0	2	1	50.0	5	0	0.0	188	6	3.2
<b>Total</b>	<b>12,345</b>	<b>10,923</b>	<b>88.5</b>	<b>40</b>	<b>24</b>	<b>60.0</b>	<b>145</b>	<b>107</b>	<b>73.8</b>	<b>544</b>	<b>464</b>	<b>85.3</b>	<b>882</b>	<b>809</b>	<b>91.7</b>	<b>10,103</b>	<b>9,518</b>	<b>94.2</b>

Note: Restraint Use includes shoulder belt only used, lap belt only used, both lap and shoulder belts used, child restraint used, restraint failure, and helmet worn.



## 5-Year Trend - Restraint Use Among Drivers

Restraint Use	2012			2013			2014			2015			2016		
	Drivers	Fatal Drivers	Injured Drivers	Drivers	Fatal Drivers	Injured Drivers	Drivers	Fatal Drivers	Injured Drivers	Drivers	Fatal Drivers	Injured Drivers	Drivers	Fatal Drivers	Injured Drivers
No belts available	88	0	21	64	0	12	55	0	5	61	0	3	35	0	4
Shoulder belt only used	14	0	0	12	0	2	9	0	1	14	0	2	21	1	4
Lap belt only used	21	0	2	39	1	6	34	0	6	20	1	2	22	0	1
Both lap & shoulder belts used	9,308	3	917	10,093	8	912	10,219	5	908	10,222	13	951	10,437	13	962
No belts used	94	11	38	84	9	23	86	4	31	93	5	37	77	9	30
Child restraint used	1	0	0	0	0	0	0	0	0	1	0	0	1	0	0
Child restraint not used, unavailable or improper use	1	0	0	0	0	0	1	0	0	0	0	0	0	0	0
Restraint failure	6	0	0	2	0	0	2	0	0	1	0	0	0	0	0
Restraint use unknown	404	2	39	484	3	48	543	3	39	539	0	52	951	1	50
Helmet worn	73	0	59	100	3	77	75	3	42	86	2	64	69	3	47
Helmet not worn	50	0	39	46	2	37	37	0	32	54	4	37	58	3	36
Helmet use unknown	4	0	3	8	0	4	3	0	0	10	0	4	8	0	5
Uncoded & errors	591	0	2	692	0	0	671	0	1	702	0	4	225	0	1
<b>Total</b>	<b>10,655</b>	<b>16</b>	<b>1,120</b>	<b>11,624</b>	<b>26</b>	<b>1,121</b>	<b>11,735</b>	<b>15</b>	<b>1,065</b>	<b>11,803</b>	<b>25</b>	<b>1,156</b>	<b>11,904</b>	<b>30</b>	<b>1,140</b>

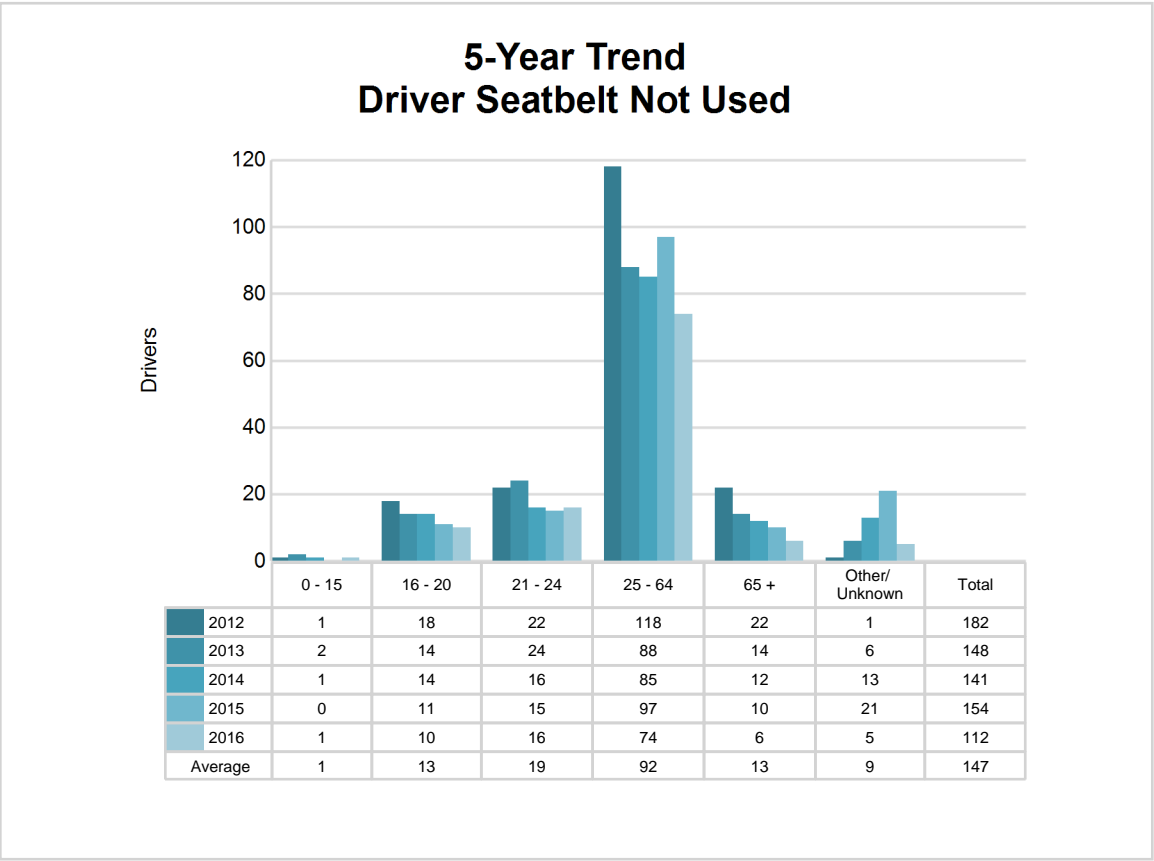
## 5-Year Trend - Restraint Use Among Drivers Coded Drinking

Restraint Use	2012			2013			2014			2015			2016		
	Drivers	Fatal Drivers	Injured Drivers	Drivers	Fatal Drivers	Injured Drivers	Drivers	Fatal Drivers	Injured Drivers	Drivers	Fatal Drivers	Injured Drivers	Drivers	Fatal Drivers	Injured Drivers
No belts available	1	0	1	3	0	3	2	0	0	1	0	1	0	0	0
Shoulder belt only used	0	0	0	0	0	0	0	0	0	1	0	1	2	1	0
Lap belt only used	0	0	0	0	0	0	1	0	0	0	0	0	1	0	0
Both lap & shoulder belts used	186	0	45	209	0	53	185	2	46	174	3	52	191	2	63
No belts used	32	4	21	18	5	8	17	0	9	27	0	17	12	4	7
Child restraint used	0	0	0	0	0	0	0	0	0	0	0	0	0	0	0
Child restraint not used, unavailable or improper use	0	0	0	0	0	0	0	0	0	0	0	0	0	0	0
Restraint failure	1	0	0	0	0	0	0	0	0	0	0	0	0	0	0
Restraint use unknown	57	2	11	51	1	15	38	1	10	43	0	15	52	0	15
Helmet worn	4	0	2	5	0	4	2	0	1	3	1	1	1	1	0
Helmet not worn	4	0	4	3	0	3	2	0	2	8	2	5	5	0	5
Helmet use unknown	0	0	0	1	0	1	0	0	0	1	0	1	0	0	0
Uncoded & errors	2	0	0	1	0	0	2	0	0	1	0	0	1	0	0
<b>Total</b>	<b>287</b>	<b>6</b>	<b>84</b>	<b>291</b>	<b>6</b>	<b>87</b>	<b>249</b>	<b>3</b>	<b>68</b>	<b>259</b>	<b>6</b>	<b>93</b>	<b>265</b>	<b>8</b>	<b>90</b>

5-Year Trend - Seatbelt Not Used Among Drivers by Age

Age Group	2012			2013			2014			2015			2016		
	Drivers	Fatal Drivers	Injured Drivers	Drivers	Fatal Drivers	Injured Drivers	Drivers	Fatal Drivers	Injured Drivers	Drivers	Fatal Drivers	Injured Drivers	Drivers	Fatal Drivers	Injured Drivers
0 - 15	1	0	1	2	0	1	1	0	0	0	0	0	1	0	1
16 - 20	18	2	6	14	0	5	14	0	6	11	1	3	10	1	3
21 - 24	22	2	13	24	2	7	16	0	7	15	0	5	16	1	7
25 - 64	118	7	34	88	5	19	85	3	19	97	2	30	74	5	22
65 +	22	0	5	14	2	3	12	1	3	10	2	2	6	2	1
Unknown	1	0	0	6	0	0	13	0	1	21	0	0	5	0	0
Total	182	11	59	148	9	35	141	4	36	154	5	40	112	9	34

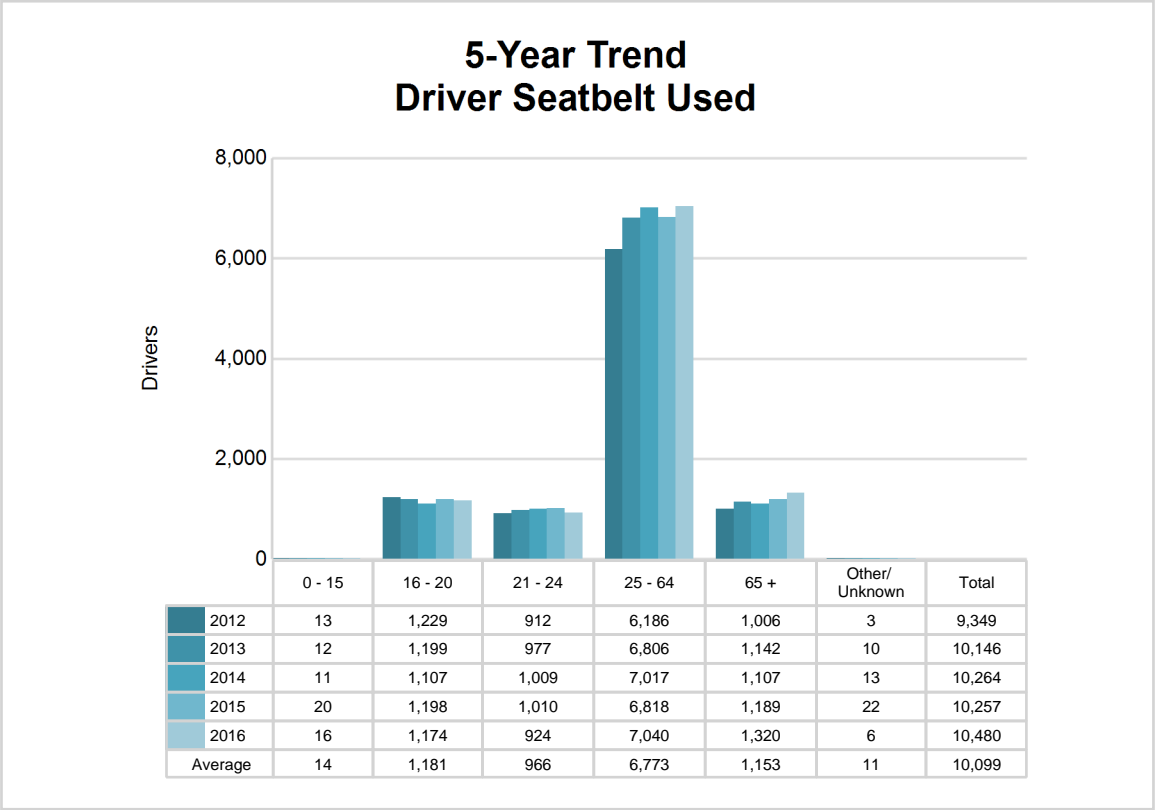
Note: Seatbelt Not Used includes no belts available or no belts used.



5-Year Trend - Seatbelt Used Among Drivers by Age

Age Group	2012			2013			2014			2015			2016		
	Drivers	Fatal Drivers	Injured Drivers	Drivers	Fatal Drivers	Injured Drivers	Drivers	Fatal Drivers	Injured Drivers	Drivers	Fatal Drivers	Injured Drivers	Drivers	Fatal Drivers	Injured Drivers
0 - 15	13	0	1	12	0	0	11	0	2	20	0	3	16	0	3
16 - 20	1,229	0	144	1,199	0	148	1,107	0	111	1,198	2	131	1,174	2	105
21 - 24	912	0	100	977	0	93	1,009	1	110	1,010	2	96	924	0	83
25 - 64	6,186	2	577	6,806	4	558	7,017	2	585	6,818	7	620	7,040	10	642
65 +	1,006	1	97	1,142	5	119	1,107	2	104	1,189	3	104	1,320	2	134
Unknown	3	0	0	10	0	2	13	0	3	22	0	1	6	0	0
Total	9,349	3	919	10,146	9	920	10,264	5	915	10,257	14	955	10,480	14	967

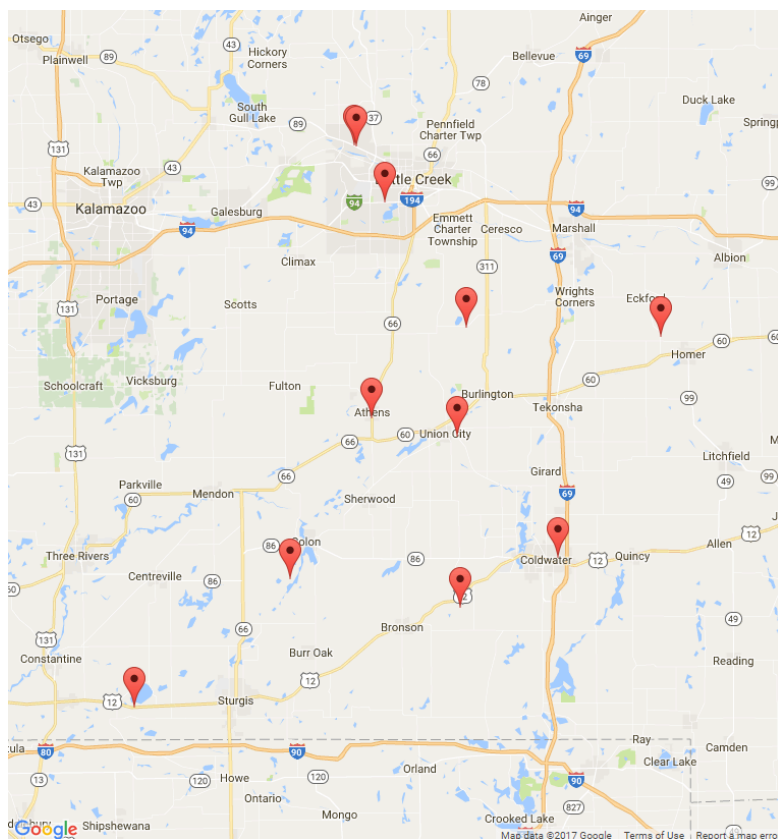
Note: Seatbelt Used includes shoulder belt only used, lap belt only used, both lap and shoulder belts used, and restraint failure.



## 5-Year Trend - Drivers in Crashes by Hazardous Action

Hazardous Action	2012		2013		2014		2015		2016	
	Total Drivers in Crashes	Drivers in Fatal Crashes	Total Drivers in Crashes	Drivers in Fatal Crashes	Total Drivers in Crashes	Drivers in Fatal Crashes	Total Drivers in Crashes	Drivers in Fatal Crashes	Total Drivers in Crashes	Drivers in Fatal Crashes
None	5,883	15	6,582	15	6,548	9	6,744	23	6,655	33
Speed too fast	996	2	1,209	8	1,282	5	1,171	9	1,183	6
Speed too slow	13	0	7	0	3	0	9	0	5	0
Failed to yield	846	1	869	5	1,006	3	991	5	972	8
Disregard traffic control	199	1	219	1	176	0	220	1	212	4
Drove wrong way	1	0	8	0	5	0	8	0	6	0
Drove left of center	64	3	68	6	54	0	87	4	83	3
Improper passing	52	0	68	0	62	1	67	0	64	0
Improper lane use	147	1	155	0	189	0	176	0	225	0
Improper turn	104	0	92	0	84	0	82	0	112	0
Improper/no signal	16	0	27	0	14	0	10	0	5	0
Improper backing	211	0	227	0	223	0	213	0	226	0
Unable to stop in assured clear distance	979	0	1,046	0	1,023	3	1,052	0	1,048	3
Other	413	4	394	2	403	3	319	2	331	2
Unknown	179	5	222	2	224	7	203	1	247	5
Reckless driving	73	1	64	0	67	0	63	1	63	1
Careless/negligent driving	358	2	367	3	371	4	386	4	464	5
Uncoded & errors	121	0	0	0	1	0	2	0	3	0
<b>Total</b>	<b>10,655</b>	<b>35</b>	<b>11,624</b>	<b>42</b>	<b>11,735</b>	<b>35</b>	<b>11,803</b>	<b>50</b>	<b>11,904</b>	<b>70</b>

## MSP Post 54 - Marshall (continued)



The picture above represents all 2016 alcohol-involved fatal crashes in Post 54.

In 2016, there were 272 alcohol-involved crashes in Post 54:

11	K - Fatal Crashes
24	A - Suspected Serious Injury Crashes
46	B - Suspected Minor Injury Crashes
39	C - Possible Injury Crashes
152	O - Property Damage Only/No Injury Crashes

### Office of Highway Safety Planning

Physical Address:  
7150 Harris Drive  
Dimondale, Michigan 48821

Mailing Address:  
P.O. Box 30634  
Lansing, Michigan 48909

Phone: (517) 284-3112  
Fax: (517) 284-3151

Find us on the web:  
[MichiganTrafficCrashFacts.org](http://MichiganTrafficCrashFacts.org)

