



2016

MTCF
Michigan Traffic
Crash Facts

Michigan Traffic Crash Facts

Reporting Criteria

Please pay particular attention to the wording when interpreting the three levels of data gathered for this report.

Crash

The Crash Level analyzes data related to crash events and returns one result per crash.

Examples: Time, weather, and location.

Units

The Units Level analyzes the experience of the units in the crash and returns one result per vehicle, driver, pedestrian, bicyclist, or train.

Examples: Vehicle type, driver condition, and unit events.

People

The People Level analyzes the experience of the people involved in the crash and returns one result per occupant/person/party.

Examples: Age, injury severity, and seat belt or helmet use.

KABCO Injury Indicator:

K = Killed

A = Suspected Serious Injury

B = Suspected Minor Injury

C = Possible Injury

O = No Injury

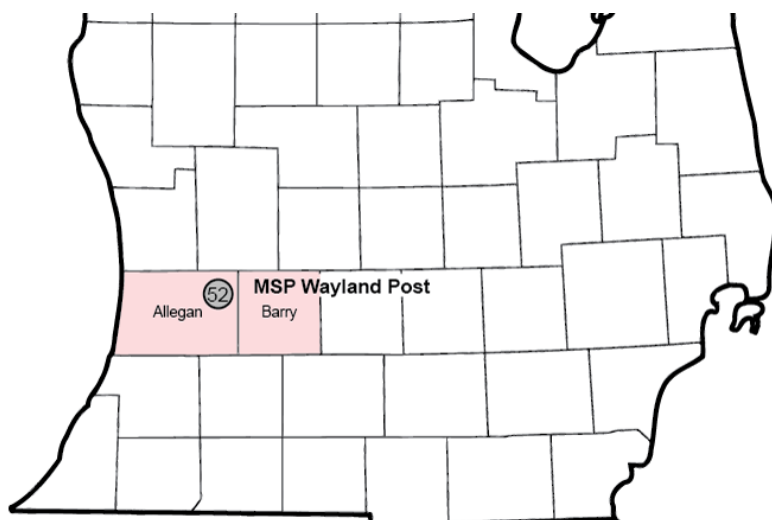
Property Damage Only (PDO)



Michigan State Police (MSP) Post 52 - Wayland

2016 Traffic Crash Data & 2012-2016 5-Year Trends

Post 52 is comprised of Allegan and Barry counties. Trend tables for this report are based on those counties.



Sources:

The crashes in this report occurred on public roadways in Michigan and resulted in injuries, fatalities, or property damage (with \$1,000 as a reporting threshold). The information was gathered from Michigan Traffic Crash Report Forms (UD-10) submitted by local police departments, sheriff's offices, and the Michigan State Police. Other related information was obtained from the departments of Transportation, State, and Community Health.

This page left intentionally blank

MSP Post 52 - Wayland

- There were 5,236 crashes in Post 52 during 2016. [Page 1]
- There were 20 fatalities in 20 fatal crashes in 2016 in Post 52. [Page 1]
- A total of 1,146 injuries resulted from 807 injury crashes. [Page 1]
- There were 4,409 property damage only crashes (no fatalities or injuries). [Page 1]
- December had the highest number of crashes (705). [Pages 1-2]
- April had the highest number of fatal crashes (4) and fatalities (4). [Pages 1-2]
- December had the highest number of injury crashes (94) and July had the highest number of injuries (139). [Page 1]
- December had the highest number of property damage only crashes (608). [Page 1]
- Of all vehicles involved in fatal crashes, two (6.9%) were motorcycles. [Page 1]
- Friday was the day of the week with the highest number of crashes (824) and Saturday had the highest number of fatal crashes (4). [Pages 2-3]
- The 3:00 PM – 5:59 PM time period had the highest number of crashes (945). The midnight – 2:59 AM time period had the highest number of fatal crashes (5). [Pages 5-6]
- During the period from 2012 to 2016, the highest number of deer crashes occurred in 2012 (1,690). There were no fatal crashes involving deer in 2016. [Pages 7-8]
- Allegan County (70.1%) had the highest number of crashes in Post 52 in 2016, followed by Barry County (29.9%). [Page 8]
- Allegan County (80.0%) had the highest number of fatalities in Post 52 in 2016, followed by Barry County (20.0%). [Page 8]
- The highest number of drivers in crashes (7,238) and drivers coded drinking in crashes (240) occurred during 2016 within the five-year period. [Page 9]
- A total of 237 crashes involved alcohol in 2016, which was the highest number of alcohol-involved crashes during the five-year time period. [Page 10]
- Alcohol-involved fatal crashes were the highest in 2012 during the five-year period from 2012 to 2016 at 10. [Page 10]
- A total of 64 crashes and 10 suspected serious injury crashes involved drugs in 2016, both the highest during the five-year period. There were five fatal crashes involving drugs in 2016. [Page 11]
- There were 6,700 drivers wearing seatbelts and 74 drivers not wearing seatbelts in crashes in 2016. Of the 74 drivers not wearing seat belts, four (5.4%) were killed and 29 (39.2%) were injured. [Pages 14-16]
- The most common hazardous action coded for drivers in 2016 in all crashes was speed too fast (1,015), while the most common hazardous actions coded for drivers in fatal crashes were reckless driving and other (4 each). [Page 17]

Post 52 Experience

In 2016:

There were 7,238 drivers involved in 5,236 motor vehicle crashes in MSP Post 52. Of those crashes, 20 were classified as fatal, resulting in 20 fatalities. An additional 1,146 persons were injured.

Post 52 experienced the highest number of motor vehicle crashes (705) in December, the highest number of fatal crashes (4) and the highest number of persons killed (4) in April.

Michigan driver statistics indicate 6.2 percent of licensed drivers in Post 52 were age 16-20, and 13.1 percent of drivers in crashes were also in that age group.

2016 - Crashes and Injuries by Month

Month	Crashes				Persons	
	Total	Fatal	Injury	Property Damage Only (PDO)	Fatalities	Injuries
January	645	1	64	580	1	85
February	460	0	61	399	0	76
March	314	1	44	269	1	48
April	350	4	71	275	4	113
May	391	1	78	312	1	106
June	361	2	71	288	2	102
July	312	3	74	235	3	139
August	316	0	69	247	0	99
September	338	1	58	279	1	83
October	494	2	62	430	2	86
November	550	2	61	487	2	86
December	705	3	94	608	3	123
Total	5,236	20	807	4,409	20	1,146

2016 - Driver Statistics

Age Group	Statewide			Driver Rates	
	2016 Population	Licensed Drivers	Drivers in Crashes	Per 10k Population	Per 10k Licensed
0 - 15	36,379	1,183	14	3.8	118.3
16 - 20	11,015	8,248	948	860.6	1,149.4
21 - 24	7,929	8,008	679	856.4	847.9
25 - 64	90,875	88,584	4,650	511.7	524.9
65 +	29,052	27,096	677	233.0	249.9
Unknown	0	0	270	--	--
Total	175,250	133,119	7,238	413.0	543.7

2016 - Vehicles in Crashes

Vehicle Type	Motor Vehicles		Fatal Crashes		Injury Crashes	PDO Crashes
	Number of Vehicles	% of Total	Number	% of Total	Number	Number
Passenger car, SUV, van	5,366	74.1	21	72.4	921	4,424
Motor home	130	1.8	0	0.0	22	108
Pickup truck	1,218	16.8	0	0.0	191	1,027
Small truck under 10,000 lbs. GVWR	81	1.1	0	0.0	16	65
Motorcycle	75	1.0	2	6.9	55	18
Moped / goped	12	0.2	1	3.4	9	2
Go-cart / golf cart	1	0.0	0	0.0	1	0
Snowmobile	1	0.0	0	0.0	1	0
Off-Road Vehicle - ORV / All-Terrain Vehicle - ATV	0	0.0	0	0.0	0	0
Other	28	0.4	1	3.4	6	21
Truck/bus over 10,000 lbs.	247	3.4	4	13.8	55	188
Unknown	79	1.1	0	0.0	11	68
Total	7,238	100.0	29	100.0	1,288	5,921

MSP Post 52 - Wayland (continued)

5-Year Trend - Crashes by Month

Month	2012		2013		2014		2015		2016	
	Total Crashes	Fatal Crashes	Total Crashes	Fatal Crashes	Total Crashes	Fatal Crashes	Total Crashes	Fatal Crashes	Total Crashes	Fatal Crashes
January	663	0	566	2	712	1	637	0	645	1
February	462	1	603	0	524	3	473	4	460	0
March	288	4	346	1	390	1	301	3	314	1
April	286	4	256	0	241	2	215	2	350	4
May	356	3	297	2	263	2	299	1	391	1
June	402	1	346	4	340	4	354	1	361	2
July	304	2	294	3	308	3	332	3	312	3
August	324	2	293	4	324	2	297	2	316	0
September	328	2	318	3	287	1	277	0	338	1
October	461	2	446	2	434	0	460	0	494	2
November	504	0	599	3	774	2	582	1	550	2
December	482	1	556	1	391	1	413	3	705	3
Total	4,860	22	4,920	25	4,988	22	4,640	20	5,236	20

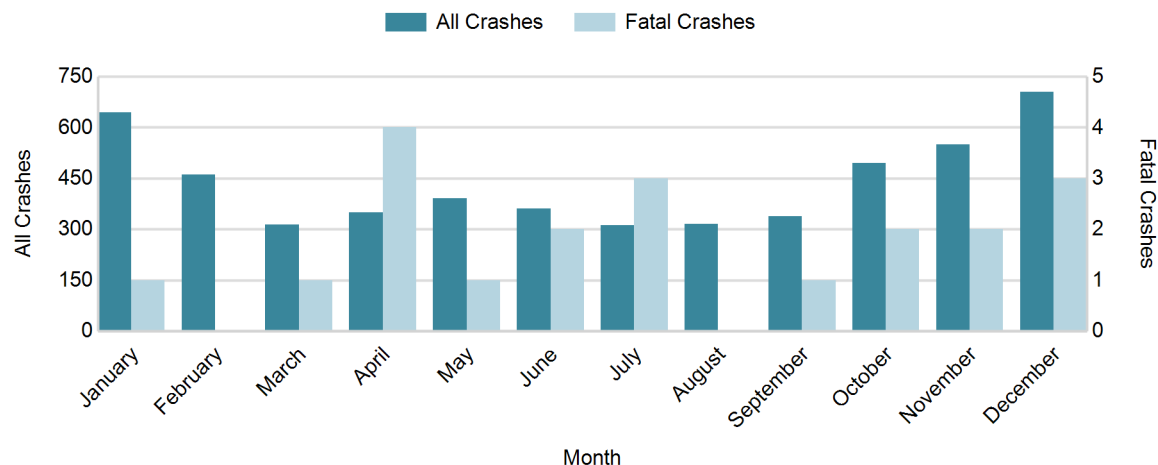
Note: † Indicates that the highest number of total crashes reported in the 5-year period occurred in the same month

5-Year Trend - Crashes by Day of Week

Day	2012		2013		2014		2015		2016	
	Total Crashes	Fatal Crashes	Total Crashes	Fatal Crashes	Total Crashes	Fatal Crashes	Total Crashes	Fatal Crashes	Total Crashes	Fatal Crashes
Monday	669	3	733	5	672	2	651	1	763	3
Tuesday	674	3	754	1	705	2	682	4	782	3
Wednesday	675	3	756	5	702	7	698	6	701	3
Thursday	693	3	724	4	849	2	703	3	768	2
Friday	871	4	680	3	877	1	708	0	824	3
Saturday	690	2	725	5	621	6	695	3	775	4
Sunday	588	4	548	2	562	2	503	3	623	2
Total	4,860	22	4,920	25	4,988	22	4,640	20	5,236	20

Note: † Indicates that the highest number of total crashes reported in the 5-year period occurred on the same day of the week

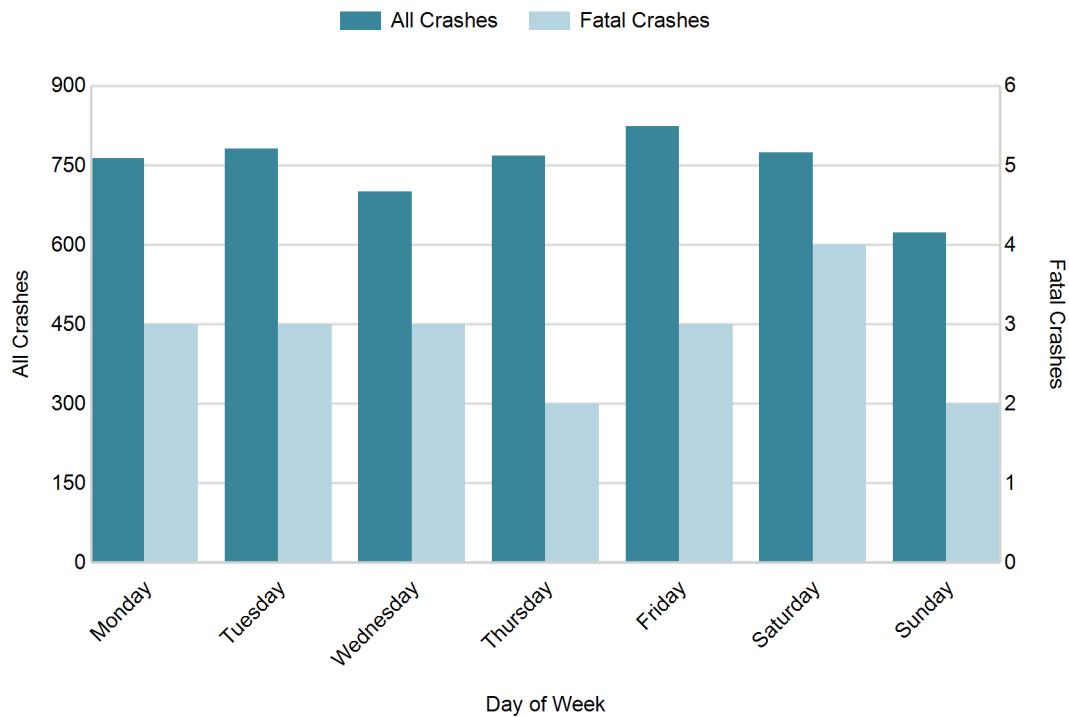
2016 Crashes by Month



2016 - Crashes by Day of Week

Day	All Crashes		Fatal Crashes		Injury Crashes			PDO Crashes
	Number	% of Total	Number	% of Fatal	A	B	C	Number
Monday	763	14.6	3	15.0	14	34	49	663
Tuesday	782	14.9	3	15.0	18	38	57	666
Wednesday	701	13.4	3	15.0	15	31	47	605
Thursday	768	14.7	2	10.0	17	45	64	640
Friday	824	15.7	3	15.0	19	49	58	695
Saturday	775	14.8	4	20.0	25	60	59	627
Sunday	623	11.9	2	10.0	14	47	47	513
Total	5,236	100.0	20	100.0	122	304	381	4,409

2016 Day of Week and Severity

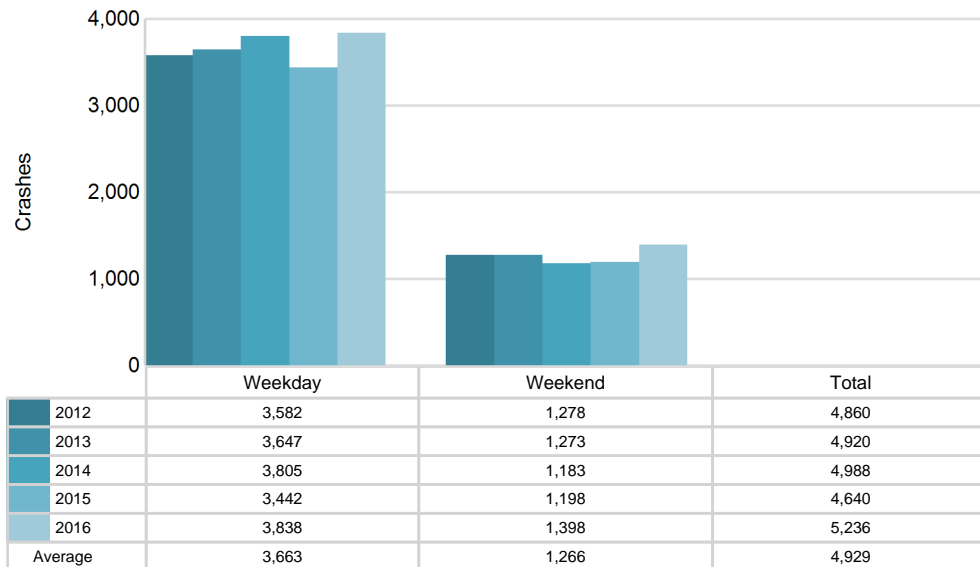


MSP Post 52 - Wayland (continued)

5-Year Trend - Crashes by Weekday and Weekend

Portion of Week	2012		2013		2014		2015		2016	
	Total Crashes	Fatal Crashes	Total Crashes	Fatal Crashes	Total Crashes	Fatal Crashes	Total Crashes	Fatal Crashes	Total Crashes	Fatal Crashes
Weekday	3,582	16	3,647	18	3,805	14	3,442	14	3,838	14
Weekend	1,278	6	1,273	7	1,183	8	1,198	6	1,398	6
Total	4,860	22	4,920	25	4,988	22	4,640	20	5,236	20

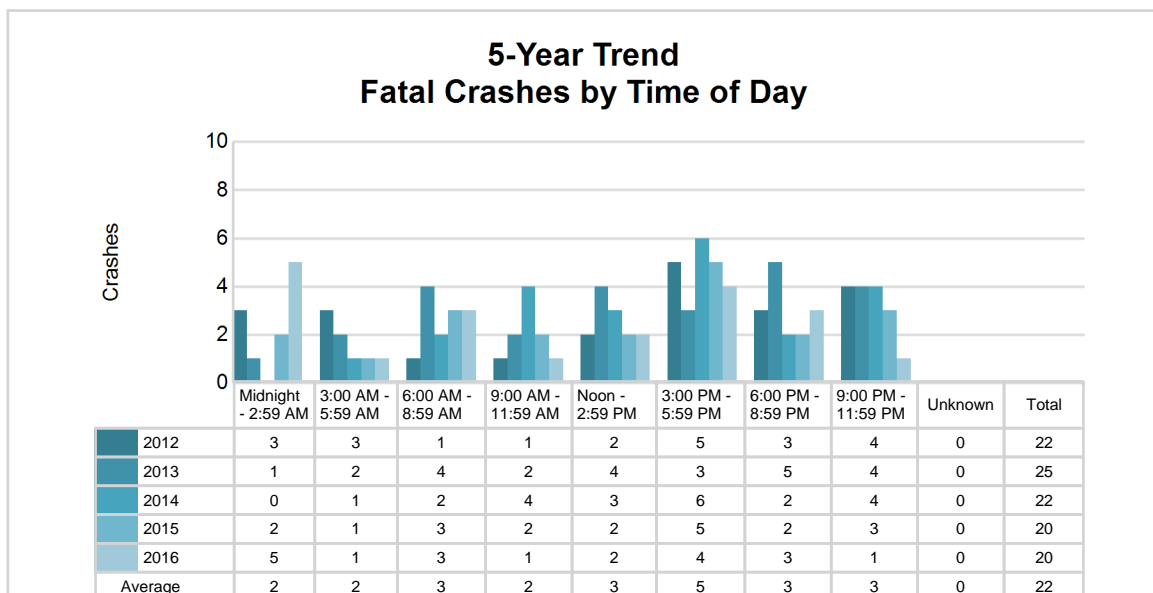
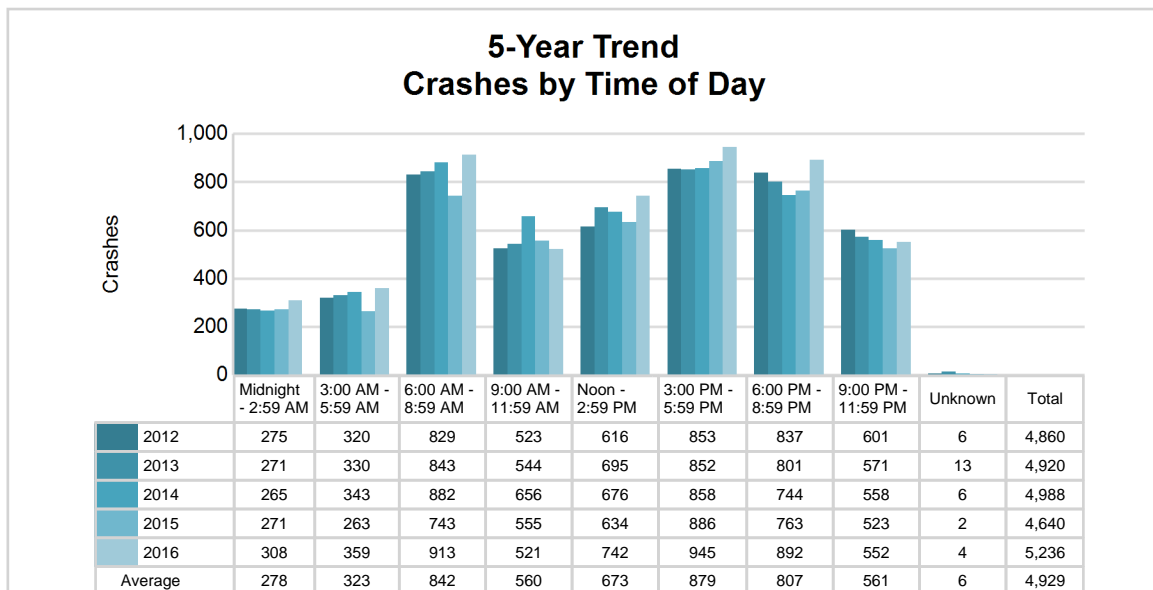
5-Year Crash Trends by Weekday (Monday - Friday) and Weekend (Saturday & Sunday)



5-Year Trend - Crashes by Time of Day

Time of Day	2012		2013		2014		2015		2016	
	Total Crashes	Fatal Crashes	Total Crashes	Fatal Crashes	Total Crashes	Fatal Crashes	Total Crashes	Fatal Crashes	Total Crashes	Fatal Crashes
Midnight - 2:59 AM	275	3	271	1	265	0	271	2	308	5
3:00 AM - 5:59 AM	320	3	330	2	343	1	263	1	359	1
6:00 AM - 8:59 AM	829	1	843	4	882	2	743	3	913	3
9:00 AM - 11:59 AM	523	1	544	2	656	4	555	2	521	1
Noon - 2:59 PM	616	2	695	4	676	3	634	2	742	2
3:00 PM - 5:59 PM	853	5	852	3	858	6	886	5	945	4
6:00 PM - 8:59 PM	837	3	801	5	744	2	763	2	892	3
9:00 PM - 11:59 PM	601	4	571	4	558	4	523	3	552	1
Unknown	6	0	13	0	6	0	2	0	4	0
Total	4,860	22	4,920	25	4,988	22	4,640	20	5,236	20

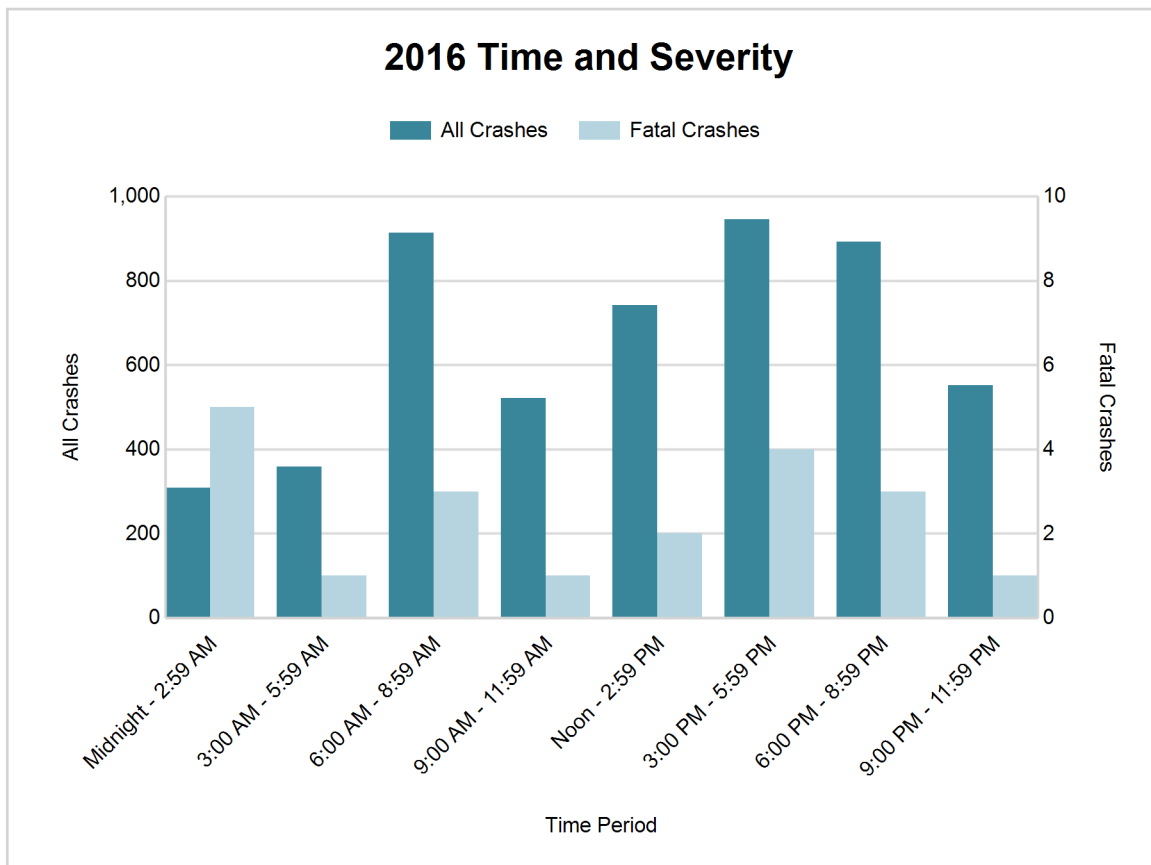
Note: † Indicates that the highest number of total crashes reported in the 5-year period occurred in the same time period



MSP Post 52 - Wayland (continued)

2016 - Time and Severity

Time of Day	All Crashes		Fatal Crashes		Injury Crashes			PDO Crashes
	Number	% of Total	Number	% of Fatal	A	B	C	Number
Midnight - 2:59 AM	308	5.9	5	25.0	7	19	14	263
3:00 AM - 5:59 AM	359	6.9	1	5.0	6	11	14	327
6:00 AM - 8:59 AM	913	17.4	3	15.0	11	44	63	792
9:00 AM - 11:59 AM	521	10.0	1	5.0	15	29	43	433
Noon - 2:59 PM	742	14.2	2	10.0	29	54	69	588
3:00 PM - 5:59 PM	945	18.0	4	20.0	27	67	94	753
6:00 PM - 8:59 PM	892	17.0	3	15.0	16	54	51	768
9:00 PM - 11:59 PM	552	10.5	1	5.0	11	26	33	481
Unknown	4	0.1	0	0.0	0	0	0	4
Total	5,236	100.0	20	100.0	122	304	381	4,409

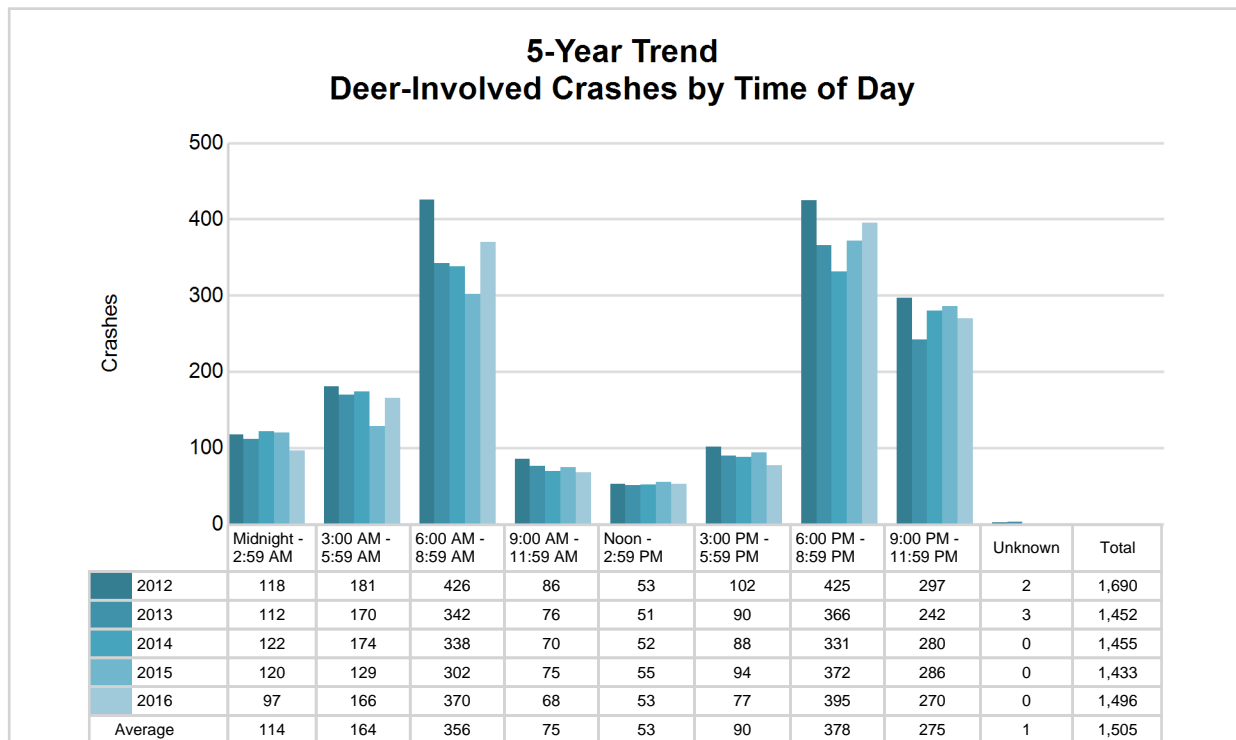


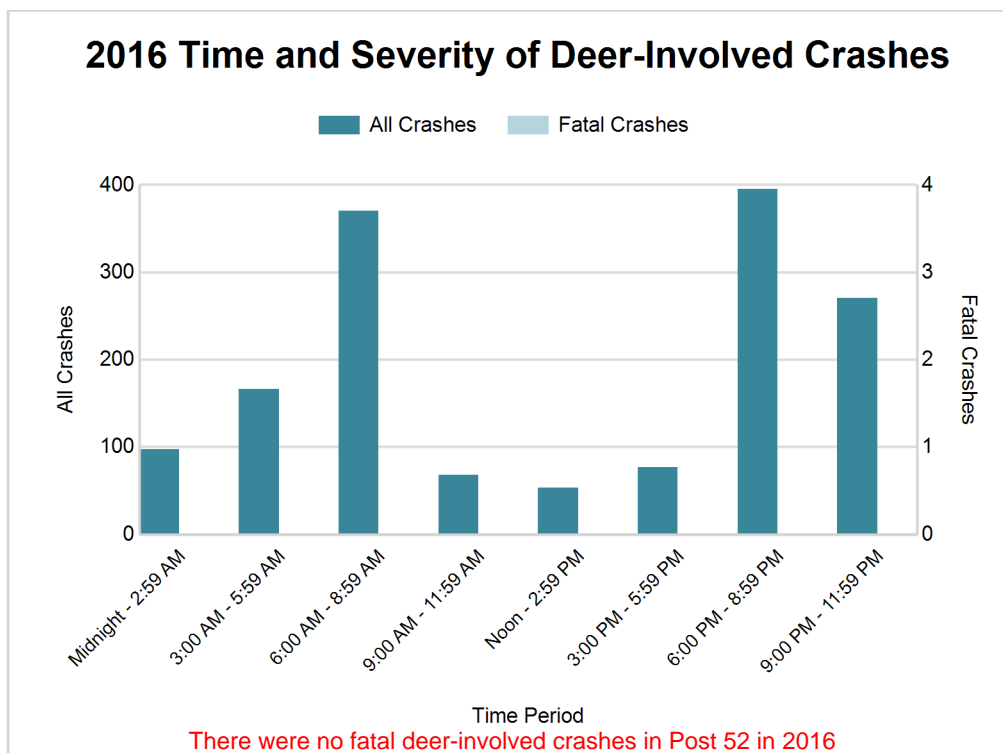
MSP Post 52 - Wayland (continued)

5-Year Trend - Deer-Involved Crashes by Time of Day

Time of Day	2012		2013		2014		2015		2016	
	Total Crashes	Fatal Crashes	Total Crashes	Fatal Crashes	Total Crashes	Fatal Crashes	Total Crashes	Fatal Crashes	Total Crashes	Fatal Crashes
Midnight - 2:59 AM	118	0	112	0	122	0	120	1	97	0
3:00 AM - 5:59 AM	181	0	170	0	174	0	129	0	166	0
6:00 AM - 8:59 AM	426	0	342	0	338	0	302	0	370	0
9:00 AM - 11:59 AM	86	0	76	0	70	0	75	0	68	0
Noon - 2:59 PM	53	0	51	0	52	0	55	0	53	0
3:00 PM - 5:59 PM	102	0	90	0	88	0	94	0	77	0
6:00 PM - 8:59 PM	425	0	366	1	331	0	372	0	395	0
9:00 PM - 11:59 PM	297	0	242	0	280	0	286	1	270	0
Unknown	2	0	3	0	0	0	0	0	0	0
Total	1,690	0	1,452	1	1,455	0	1,433	2	1,496	0

Note: † Indicates that the highest number of total crashes reported in the 5-year period occurred in the same time period





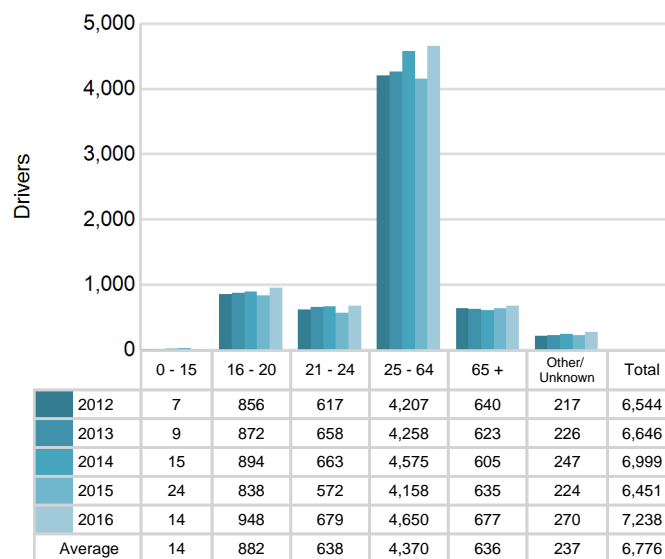
2016 - Reported Motor Vehicle Crashes by County

County	Crashes											Persons	
	Total	Fatal	Injury	Property Damage	Inter-state	US Route	State Route	Local Street	Alcohol-Involved	Drug-Involved	Deer-Involved	Fatalities	Injuries
Allegan	3,673	16	574	3,083	328	576	721	2,044	160	50	886	16	823
Barry	1,563	4	233	1,326	0	0	611	951	77	14	610	4	323
Total	5,236	20	807	4,409	328	576	1,332	2,995	237	64	1,496	20	1,146

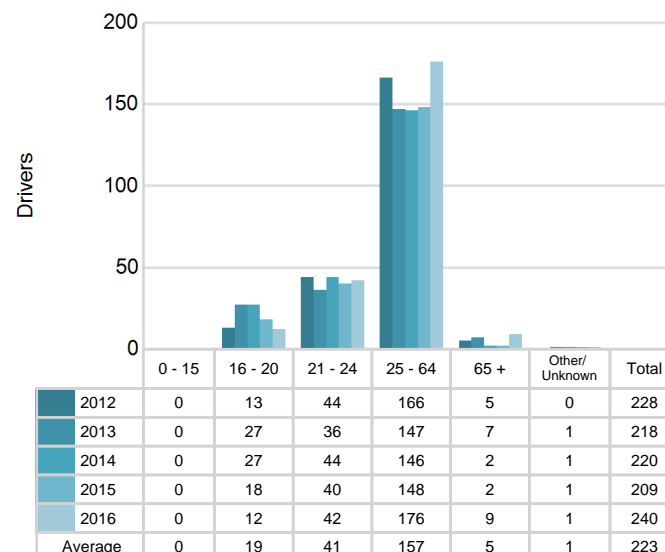
5-Year Trend - Drivers in Crashes Coded Drinking by Driver Age

Driver Age	2012		2013		2014		2015		2016	
	Total Drivers in Crashes	Total Drivers Coded Drinking	Total Drivers in Crashes	Total Drivers Coded Drinking	Total Drivers in Crashes	Total Drivers Coded Drinking	Total Drivers in Crashes	Total Drivers Coded Drinking	Total Drivers in Crashes	Total Drivers Coded Drinking
0 - 15	7	0	9	0	15	0	24	0	14	0
16 - 20	856	13	872	27	894	27	838	18	948	12
21 - 24	617	44	658	36	663	44	572	40	679	42
25 - 64	4,207	166	4,258	147	4,575	146	4,158	148	4,650	176
65 +	640	5	623	7	605	2	635	2	677	9
Unknown	217	0	226	1	247	1	224	1	270	1
Total	6,544	228	6,646	218	6,999	220	6,451	209	7,238	240

**5-Year Trend
Total Drivers in Crashes by Age**



**5-Year Trend
Total Drivers Coded Drinking by Age**



2016 - Bodily Alcohol Concentration (BAC) Results Among All Vehicle Drivers in Alcohol-Involved Crashes by Age

Age Group	Drivers				BAC Result Range for Drivers Coded Drinking				
	Total Drivers in Alcohol-Involved Crashes	Total Drivers Tested in all Crashes	Total Drivers Coded Drinking, Tested	Total Drivers Coded Drinking	BAC = 0.00	BAC 0.01 g/dL to 0.07 g/dL	BAC 0.08 g/dL to 0.16 g/dL	BAC 0.17 g/dL and Above	BAC Not Reported
0 - 15	0	0	0	0	0	0	0	0	0
16 - 20	15	23	10	12	0	2	6	2	2
21 - 24	46	40	37	42	0	7	20	6	9
25 - 64	223	200	145	176	1	17	55	46	57
65 +	14	17	9	9	0	1	4	0	4
Unknown	5	1	0	1	0	0	0	0	1
Total	303	281	201	240	1	27	85	54	73

Notes: BAC measured in grams (g) per deciliter (dL).

BAC may not be reported if drivers are not tested or if the results are not available immediately (as in the case of a blood test).

A driver may be coded by the officer as drinking even though no test is administered.

Alcohol-Involved Crashes

In 2016, there were 303 drivers in alcohol-involved crashes; 240 (79.2%) of those drivers were coded as had-been-drinking by the officer on the crash form.

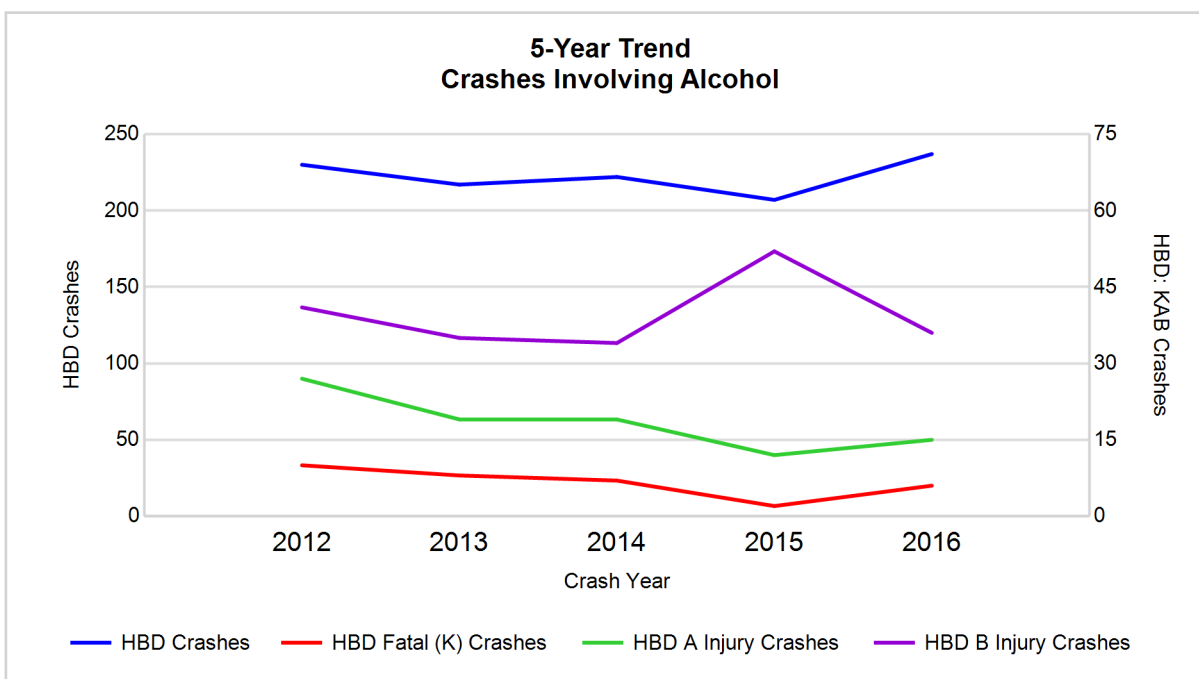
- 139 (57.9%) of the 240 drivers had a blood alcohol concentration (BAC) of 0.08 g/dL (grams per deciliter) or greater, and 54 (38.8%) of the 139 drivers had a BAC at or above 0.17 g/dL.
- 201 (83.8%) of the 240 drivers were coded as had-been-drinking and were tested for alcohol consumption.

5-Year Trend - Crashes Involving Alcohol

Year	All Crashes	HBD Crashes	% HBD	Fatal Crashes	HBD Fatal Crashes	% HBD	A Injury Crashes	HBD A Injury Crashes	% HBD	B Injury Crashes	HBD B Injury Crashes	% HBD
2012	4,860	230	4.7	22	10	45.5	103	27	26.2	279	41	14.7
2013	4,920	217	4.4	25	8	32.0	99	19	19.2	259	35	13.5
2014	4,988	222	4.5	22	7	31.8	98	19	19.4	253	34	13.4
2015	4,640	207	4.5	20	2	10.0	84	12	14.3	250	52	20.8
2016	5,236**	237**	4.5	20	6	30.0	122**	15	12.3*	304**	36	11.8*

Note: * Indicates that the most recent year is the lowest number or percentage reported in the 5-year period in that column

** Indicates that the most recent year is the highest number or percentage reported in the 5-year period in that column



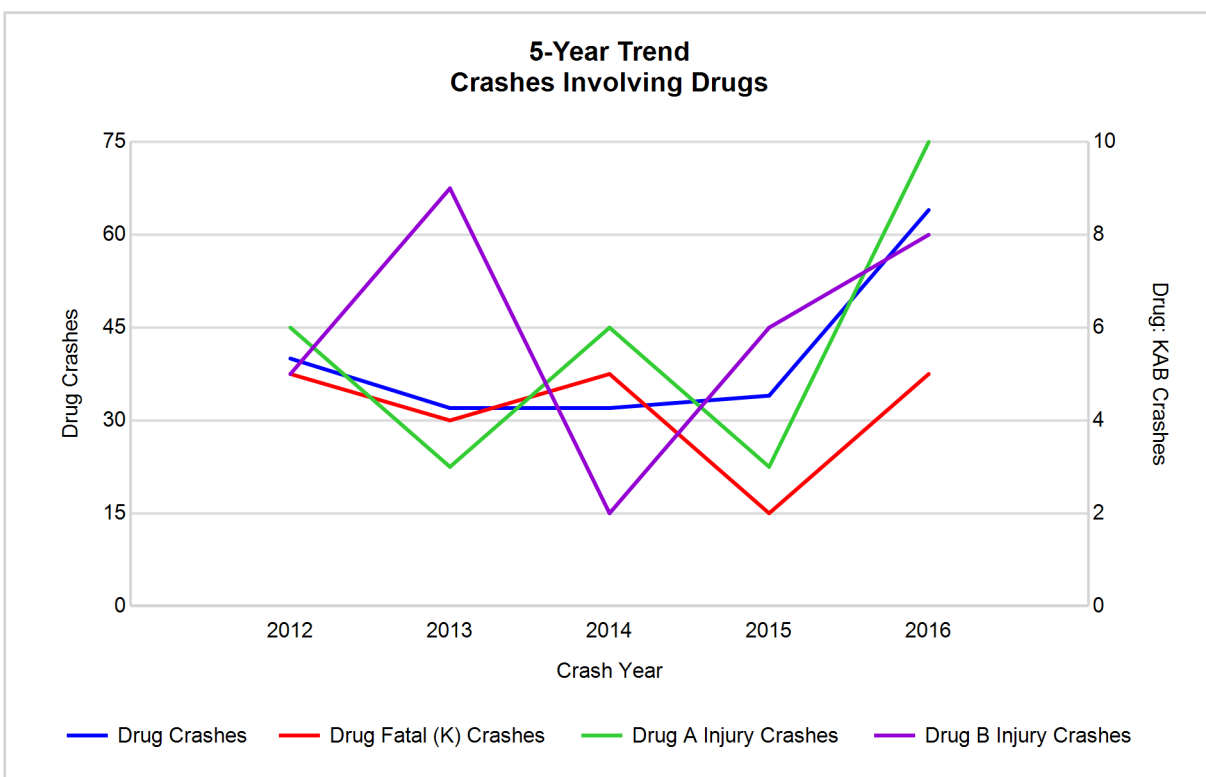
Note: Had-Been-Drinking (HBD)

5-Year Trend - Crashes Involving Drugs

Year	All Crashes	Drug Crashes	% Drug	Fatal Crashes	Drug Fatal Crashes	% Drug	A Injury Crashes	Drug A Injury Crashes	% Drug	B Injury Crashes	Drug B Injury Crashes	% Drug
2012	4,860	40	0.8	22	5	22.7	103	6	5.8	279	5	1.8
2013	4,920	32	0.7	25	4	16.0	99	3	3.0	259	9	3.5
2014	4,988	32	0.6	22	5	22.7	98	6	6.1	253	2	0.8
2015	4,640	34	0.7	20	2	10.0	84	3	3.6	250	6	2.4
2016	5,236**	64**	1.2**	20	5	25.0**	122**	10**	8.2**	304**	8	2.6

Note: * Indicates that the most recent year is the lowest number or percentage reported in the 5-year period in that column

** Indicates that the most recent year is the highest number or percentage reported in the 5-year period in that column

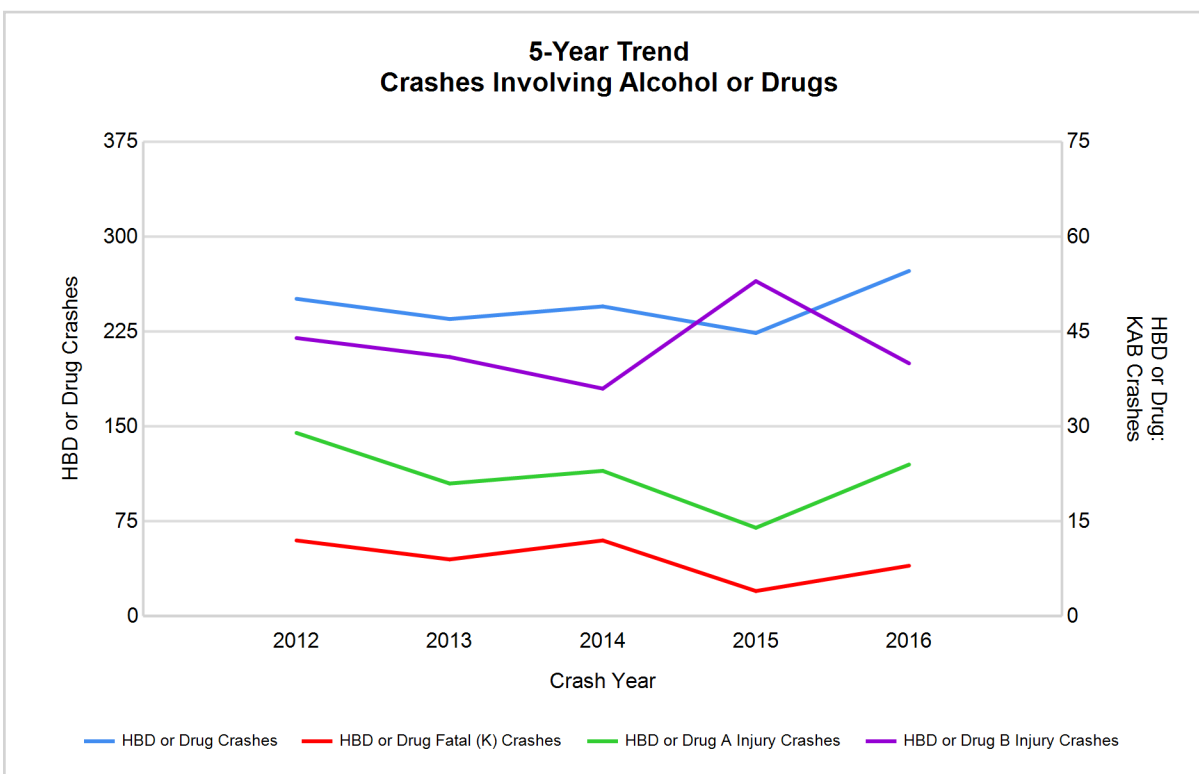


5-Year Trend - Crashes Involving Alcohol or Drugs

Year	All Crashes	HBD or Drug Crashes	% HBD or Drug	Fatal Crashes	HBD or Drug Fatal Crashes	% HBD or Drug	A Injury Crashes	HBD or Drug A Injury Crashes	% HBD or Drug	B Injury Crashes	HBD or Drug B Injury Crashes	% HBD or Drug
2012	4,860	251	5.2	22	12	54.5	103	29	28.2	279	44	15.8
2013	4,920	235	4.8	25	9	36.0	99	21	21.2	259	41	15.8
2014	4,988	245	4.9	22	12	54.5	98	23	23.5	253	36	14.2
2015	4,640	224	4.8	20	4	20.0	84	14	16.7	250	53	21.2
2016	5,236**	273**	5.2	20	8	40.0	122**	24	19.7	304**	40	13.2*

Note: * Indicates that the most recent year is the lowest number or percentage reported in the 5-year period in that column

** Indicates that the most recent year is the highest number or percentage reported in the 5-year period in that column



Note: Had-Been-Drinking (HBD)

2016 - Restraints Worn Among Vehicle Drivers and Injured Passengers by Vehicle Type

Vehicle Type	Total Occupants			Fatalities			A - Suspected Serious			B - Suspected Minor			C - Possible Injury			No Injury		
	Total	Used Restraint	%	Total	Used Restraint	%	Total	Used Restraint	%	Total	Used Restraint	%	Total	Used Restraint	%	Total	Used Restraint	%
Passenger car, SUV, van	5,601	5,300	94.6	15	8	53.3	98	80	81.6	269	236	87.7	457	440	96.3	4,611	4,524	98.1
Motor home	132	125	94.7	0	0	0.0	0	0	0.0	5	4	80.0	7	7	100.0	116	114	98.3
Pickup truck	1,260	1,189	94.4	0	0	0.0	14	13	92.9	54	45	83.3	71	68	95.8	1,090	1,062	97.4
Small truck under 10,000 lbs. GVWR	83	79	95.2	0	0	0.0	2	1	50.0	7	7	100.0	3	3	100.0	71	68	95.8
Motorcycle	83	48	57.8	2	0	0.0	13	9	69.2	31	14	45.2	17	11	64.7	19	14	73.7
Moped / goped	12	3	25.0	1	0	0.0	5	1	20.0	3	1	33.3	1	1	100.0	2	0	0.0
Go-cart / golf cart	2	0	0.0	0	0	0.0	0	0	0.0	1	0	0.0	1	0	0.0	0	0	0.0
Snowmobile	1	1	100.0	0	0	0.0	1	1	100.0	0	0	0.0	0	0	0.0	0	0	0.0
Off-Road Vehicle - ORV / All-Terrain Vehicle - ATV	0	0	0.0	0	0	0.0	0	0	0.0	0	0	0.0	0	0	0.0	0	0	0.0
Other	40	14	35.0	0	0	0.0	0	0	0.0	7	1	14.3	9	1	11.1	20	12	60.0
Truck/bus over 10,000 lbs.	263	250	95.1	1	0	0.0	1	0	0.0	5	5	100.0	21	21	100.0	231	224	97.0
Unknown	79	2	2.5	0	0	0.0	0	0	0.0	0	0	0.0	0	0	0.0	2	2	100.0
Total	7,556	7,011	92.8	19	8	42.1	134	105	78.4	382	313	81.9	587	552	94.0	6,162	6,020	97.7

Note: Restraint Use includes shoulder belt only used, lap belt only used, both lap and shoulder belts used, child restraint used, restraint failure, and helmet worn.

2016 - Restraints Worn Among Vehicle Drivers and Injured Passengers by Age

Age Group	Total Occupants			Fatalities			A - Suspected Serious			B - Suspected Minor			C - Possible Injury			No Injury		
	Total	Used Restraint	%	Total	Used Restraint	%	Total	Used Restraint	%	Total	Used Restraint	%	Total	Used Restraint	%	Total	Used Restraint	%
0 - 15	110	93	84.5	0	0	0.0	6	4	66.7	28	21	75.0	66	59	89.4	10	9	90.0
16 - 20	1,002	964	96.2	3	1	33.3	11	5	45.5	65	54	83.1	82	77	93.9	840	826	98.3
21 - 24	699	666	95.3	1	1	100.0	17	12	70.6	38	30	78.9	47	44	93.6	595	578	97.1
25 - 64	4,770	4,596	96.4	11	4	36.4	83	68	81.9	222	182	82.0	332	313	94.3	4,110	4,022	97.9
65 +	705	688	97.6	4	2	50.0	17	16	94.1	29	26	89.7	60	59	98.3	591	581	98.3
Unknown	270	4	1.5	0	0	0.0	0	0	0.0	0	0	0.0	0	0	0.0	16	4	25.0
Total	7,556	7,011	92.8	19	8	42.1	134	105	78.4	382	313	81.9	587	552	94.0	6,162	6,020	97.7

Note: Restraint Use includes shoulder belt only used, lap belt only used, both lap and shoulder belts used, child restraint used, restraint failure, and helmet worn.

5-Year Trend - Restraint Use Among Drivers

Restraint Use	2012			2013			2014			2015			2016		
	Drivers	Fatal Drivers	Injured Drivers	Drivers	Fatal Drivers	Injured Drivers	Drivers	Fatal Drivers	Injured Drivers	Drivers	Fatal Drivers	Injured Drivers	Drivers	Fatal Drivers	Injured Drivers
No belts available	51	1	15	34	0	4	51	1	8	56	0	11	25	0	2
Shoulder belt only used	2	0	1	2	0	0	0	0	0	78	0	5	120	0	5
Lap belt only used	10	1	2	10	0	0	25	0	2	15	0	1	19	0	2
Both lap & shoulder belts used	5,996	4	594	6,117	7	597	6,433	14	650	5,858	10	587	6,560	5	670
No belts used	66	5	33	57	3	27	52	5	28	45	4	15	49	4	27
Child restraint used	1	0	0	0	0	0	1	0	1	0	0	0	2	0	0
Child restraint not used, unavailable or improper use	0	0	0	1	0	1	0	0	0	0	0	0	0	0	0
Restraint failure	3	0	2	3	0	1	0	0	0	1	0	1	1	1	0
Restraint use unknown	119	1	14	124	1	11	126	0	25	100	0	15	238	3	20
Helmet worn	73	2	56	47	3	27	34	2	28	41	0	29	48	0	34
Helmet not worn	21	4	13	18	1	16	20	0	16	26	0	20	31	2	24
Helmet use unknown	4	1	1	4	1	1	11	0	6	7	1	2	8	1	4
Uncoded & errors	198	0	3	229	0	5	246	0	2	224	0	3	137	0	0
Total	6,544	19	734	6,646	16	690	6,999	22	766	6,451	15	689	7,238	16	788

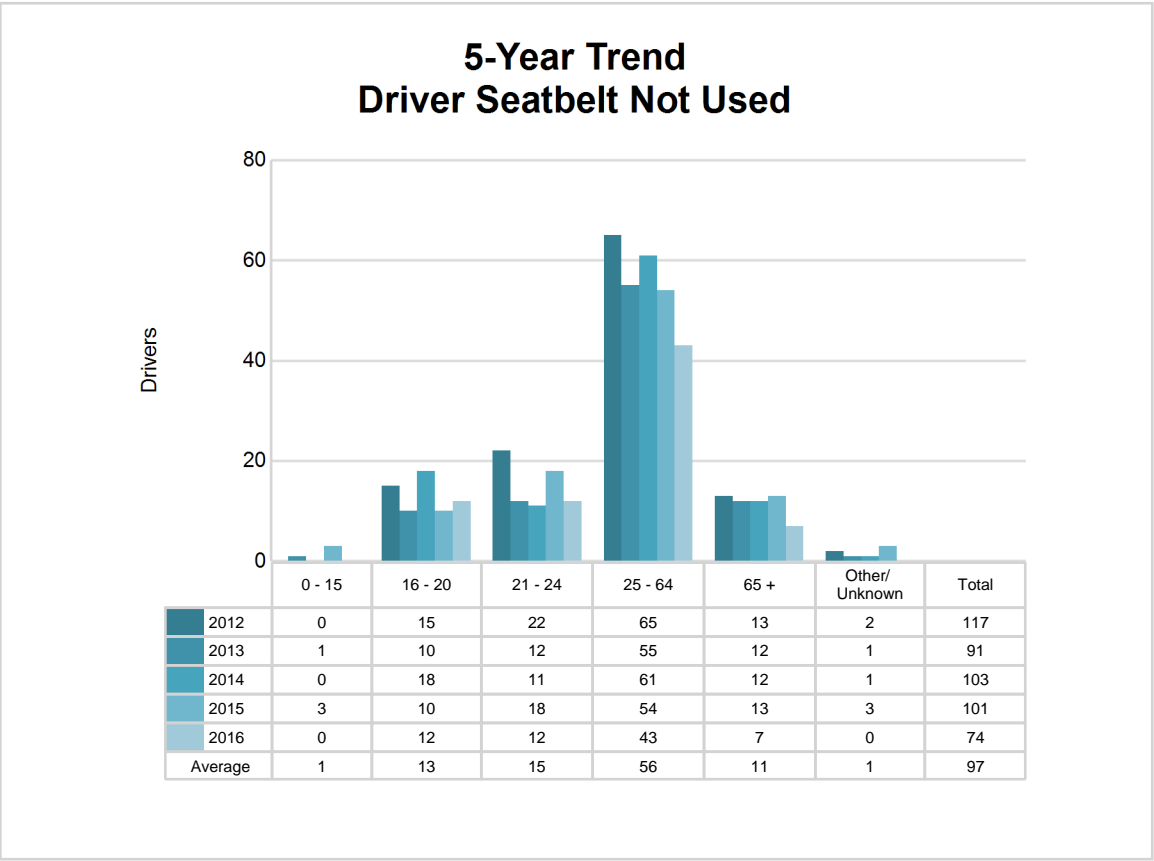
5-Year Trend - Restraint Use Among Drivers Coded Drinking

Restraint Use	2012			2013			2014			2015			2016		
	Drivers	Fatal Drivers	Injured Drivers	Drivers	Fatal Drivers	Injured Drivers	Drivers	Fatal Drivers	Injured Drivers	Drivers	Fatal Drivers	Injured Drivers	Drivers	Fatal Drivers	Injured Drivers
No belts available	5	0	3	1	0	0	4	0	2	0	0	0	1	0	0
Shoulder belt only used	1	0	1	0	0	0	0	0	0	5	0	1	7	0	0
Lap belt only used	2	1	0	0	0	0	1	0	1	0	0	0	0	0	0
Both lap & shoulder belts used	161	1	55	167	2	50	172	3	47	152	0	55	180	1	51
No belts used	18	3	13	16	1	9	11	1	9	12	0	7	11	2	8
Child restraint used	0	0	0	0	0	0	0	0	0	0	0	0	0	0	0
Child restraint not used, unavailable or improper use	0	0	0	1	0	1	0	0	0	0	0	0	0	0	0
Restraint failure	0	0	0	0	0	0	0	0	0	0	0	0	1	1	0
Restraint use unknown	24	0	6	29	1	4	24	0	7	29	0	6	31	0	9
Helmet worn	9	1	7	2	0	2	1	0	1	1	0	1	3	0	1
Helmet not worn	7	3	2	2	0	2	2	0	2	6	0	5	5	1	4
Helmet use unknown	0	0	0	0	0	0	4	0	3	3	1	1	1	0	1
Uncoded & errors	1	0	1	0	0	0	1	0	1	1	0	0	0	0	0
Total	228	9	88	218	4	68	220	4	73	209	1	76	240	5	74

5-Year Trend - Seatbelt Not Used Among Drivers by Age

Age Group	2012			2013			2014			2015			2016		
	Drivers	Fatal Drivers	Injured Drivers	Drivers	Fatal Drivers	Injured Drivers	Drivers	Fatal Drivers	Injured Drivers	Drivers	Fatal Drivers	Injured Drivers	Drivers	Fatal Drivers	Injured Drivers
0 - 15	0	0	0	1	0	1	0	0	0	3	0	1	0	0	0
16 - 20	15	0	5	10	0	6	18	1	6	10	0	4	12	2	5
21 - 24	22	2	14	12	0	6	11	0	4	18	0	2	12	0	5
25 - 64	65	4	24	55	2	18	61	3	22	54	3	16	43	1	17
65 +	13	0	5	12	1	0	12	2	4	13	1	3	7	1	2
Unknown	2	0	0	1	0	0	1	0	0	3	0	0	0	0	0
Total	117	6	48	91	3	31	103	6	36	101	4	26	74	4	29

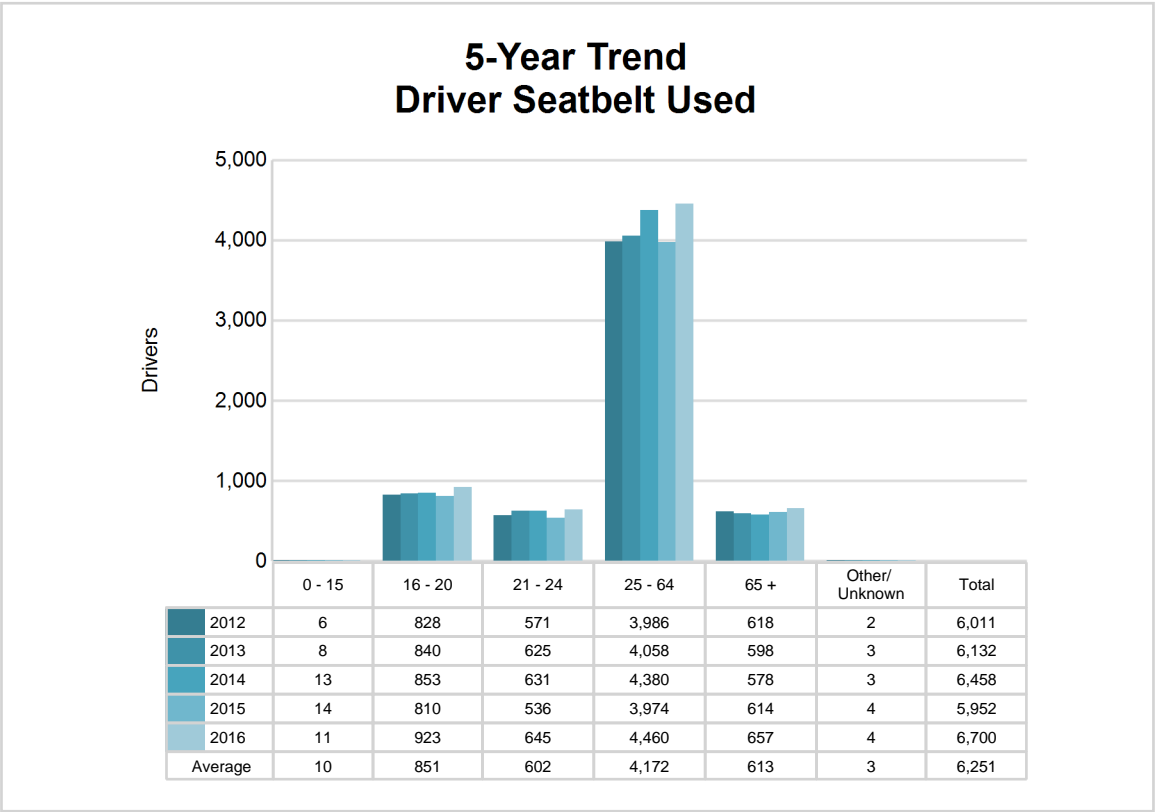
Note: Seatbelt Not Used includes no belts available or no belts used.



5-Year Trend - Seatbelt Used Among Drivers by Age

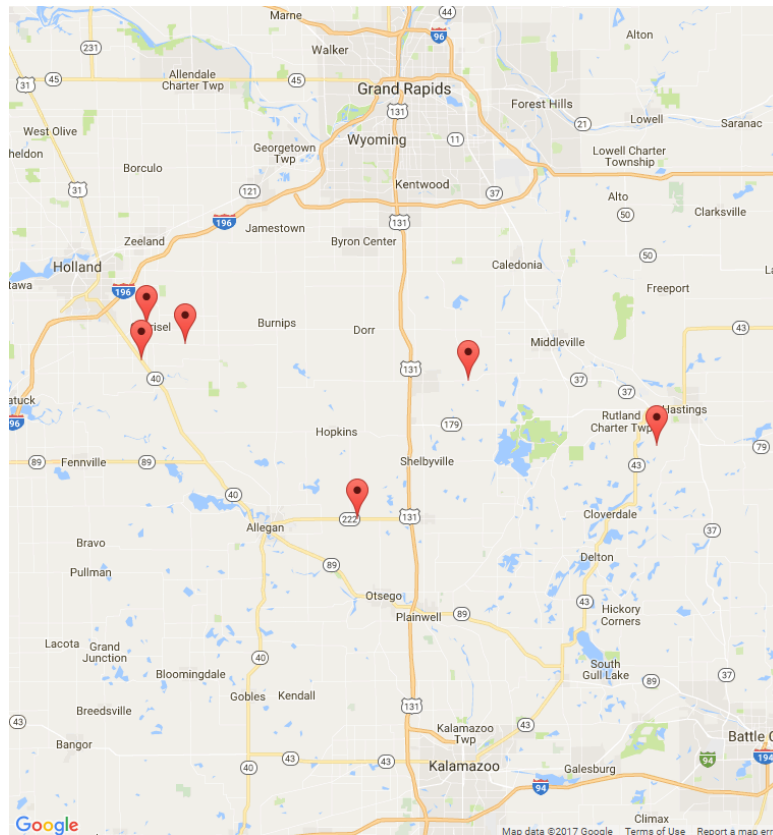
Age Group	2012			2013			2014			2015			2016		
	Drivers	Fatal Drivers	Injured Drivers	Drivers	Fatal Drivers	Injured Drivers	Drivers	Fatal Drivers	Injured Drivers	Drivers	Fatal Drivers	Injured Drivers	Drivers	Fatal Drivers	Injured Drivers
0 - 15	6	0	1	8	0	0	13	0	1	14	0	2	11	0	2
16 - 20	828	0	111	840	0	126	853	0	104	810	2	96	923	1	95
21 - 24	571	0	75	625	1	59	631	3	81	536	2	59	645	1	66
25 - 64	3,986	3	358	4,058	5	364	4,380	6	401	3,974	5	374	4,460	4	440
65 +	618	2	54	598	1	49	578	5	65	614	1	63	657	0	74
Unknown	2	0	0	3	0	0	3	0	0	4	0	0	4	0	0
Total	6,011	5	599	6,132	7	598	6,458	14	652	5,952	10	594	6,700	6	677

Note: Seatbelt Used includes shoulder belt only used, lap belt only used, both lap and shoulder belts used, and restraint failure.



5-Year Trend - Drivers in Crashes by Hazardous Action

Hazardous Action	2012		2013		2014		2015		2016	
	Total Drivers in Crashes	Drivers in Fatal Crashes	Total Drivers in Crashes	Drivers in Fatal Crashes	Total Drivers in Crashes	Drivers in Fatal Crashes	Total Drivers in Crashes	Drivers in Fatal Crashes	Total Drivers in Crashes	Drivers in Fatal Crashes
None	3,583	12	3,451	14	3,672	18	3,556	12	3,793	11
Speed too fast	706	3	985	2	904	1	728	5	1,015	3
Speed too slow	6	0	7	0	5	0	7	0	8	0
Failed to yield	461	2	438	2	517	5	467	3	510	1
Disregard traffic control	81	0	67	2	80	0	70	1	82	1
Drove wrong way	6	0	4	1	3	1	2	0	0	0
Drove left of center	38	1	48	1	75	5	51	1	55	1
Improper passing	40	1	39	0	36	0	46	0	43	0
Improper lane use	62	0	54	0	45	0	54	0	59	0
Improper turn	33	0	41	0	45	0	37	0	41	0
Improper/no signal	11	0	9	0	15	1	21	0	12	0
Improper backing	77	0	77	0	105	0	77	0	93	0
Unable to stop in assured clear distance	559	0	548	1	626	0	586	0	692	0
Other	351	5	386	2	404	4	307	5	333	4
Unknown	109	4	107	5	81	1	96	3	159	3
Reckless driving	44	1	37	2	40	1	49	0	48	4
Careless/negligent driving	271	4	231	6	230	2	259	2	253	1
Uncoded & errors	106	0	117	1	116	0	38	0	42	0
Total	6,544	33	6,646	39	6,999	39	6,451	32	7,238	29



The picture above represents all 2016 alcohol-involved fatal crashes in Post 52.

In 2016, there were 237 alcohol-involved crashes in Post 52:

- | | |
|-----|--|
| 6 | K - Fatal Crashes |
| 15 | A - Suspected Serious Injury Crashes |
| 36 | B - Suspected Minor Injury Crashes |
| 33 | C - Possible Injury Crashes |
| 147 | O - Property Damage Only/No Injury Crashes |

Office of Highway Safety Planning

Physical Address:
7150 Harris Drive
Dimondale, Michigan 48821

Mailing Address:
P.O. Box 30634
Lansing, Michigan 48909

Phone: (517) 284-3112
Fax: (517) 284-3151

Find us on the web:
MichiganTrafficCrashFacts.org

