



Office of Highway Safety Planning

2016

**MTCF**  
 Michigan Traffic  
 Crash Facts

# Michigan Traffic Crash Facts

## Reporting Criteria

Please pay particular attention to the wording when interpreting the three levels of data gathered for this report.

### Crash

The Crash Level analyzes data related to crash events and returns one result per crash.

Examples: Time, weather, and location.

### Units

The Units Level analyzes the experience of the units in the crash and returns one result per vehicle, driver, pedestrian, bicyclist, or train.

Examples: Vehicle type, driver condition, and unit events.

### People

The People Level analyzes the experience of the people involved in the crash and returns one result per occupant/person/party.

Examples: Age, injury severity, and seat belt or helmet use.

### **KABCO Injury Indicator:**

K = Killed

A = Suspected Serious Injury

B = Suspected Minor Injury

C = Possible Injury

O = No Injury

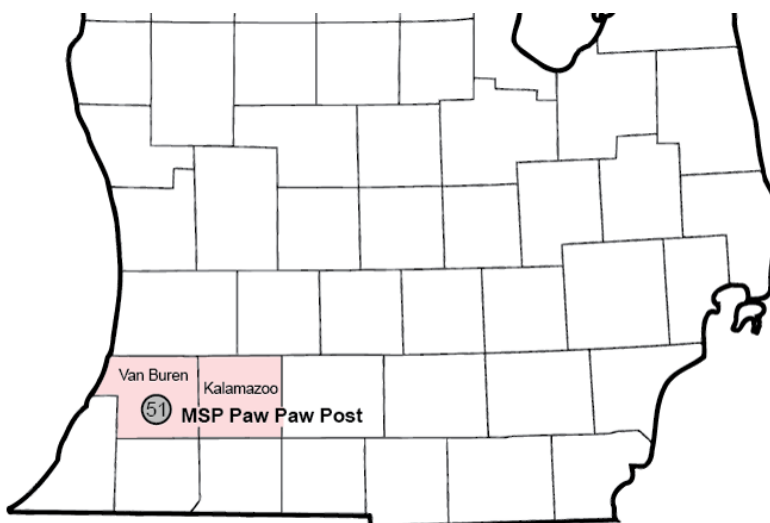
Property Damage Only (PDO)



## Michigan State Police (MSP) Post 51 - Paw Paw

### 2016 Traffic Crash Data & 2012-2016 5-Year Trends

Post 51 is comprised of Kalamazoo and Van Buren counties. Trend tables for this report are based on those counties.



### Sources:

The crashes in this report occurred on public roadways in Michigan and resulted in injuries, fatalities, or property damage (with \$1,000 as a reporting threshold). The information was gathered from Michigan Traffic Crash Report Forms (UD-10) submitted by local police departments, sheriff's offices, and the Michigan State Police. Other related information was obtained from the departments of Transportation, State, and Community Health.

This page left intentionally blank

## **MSP Post 51 - Paw Paw**

- There were 10,990 crashes in Post 51 during 2016. [Page 1]
- There were 50 fatalities in 43 fatal crashes in 2016 in Post 51. [Page 1]
- A total of 2,691 injuries resulted from 1,963 injury crashes. [Page 1]
- There were 8,984 property damage only crashes (no fatalities or injuries). [Page 1]
- December had the highest number of crashes (1,319). [Pages 1-2]
- April had the highest number of fatal crashes (7), and June had the highest number of fatalities (11). [Pages 1-2]
- December had the highest number of injury crashes (191), and July had the highest number of injuries (265). [Page 1]
- December had the highest number of property damage only crashes (1,125). [Page 1]
- Of all vehicles involved in fatal crashes, five (7.2%) were motorcycles. [Page 1]
- Friday was the day of the week with the highest number of crashes (1,852) and Sunday had the highest number of fatal crashes (9). [Pages 2-3]
- The 3:00 PM – 5:59 PM time period had the highest number of crashes (2,508). This is true for each year from 2012 to 2016. The same time period had the highest number of fatal crashes (10). [Pages 5-6]
- During the period from 2012 to 2016, the highest number of deer crashes occurred in 2013 (1,581). There were no fatal crashes involving deer in 2016. [Pages 7-8]
- Kalamazoo County (78.2%) had the highest number of crashes in Post 51 in 2016, followed by Van Buren County (21.8%). [Page 8]
- Kalamazoo County (70.0%) had the highest number of fatalities in Post 51 in 2016, followed by Van Buren County (30.0%). [Page 8]
- The highest number of drivers in crashes (18,594) and drivers coded drinking in crashes (396) occurred during 2016 within the five-year period. [Page 9]
- A total of 399 crashes involved alcohol in 2016, but 2013 had the highest number of alcohol-involved crashes, with 405. [Page 10]
- Alcohol-involved fatal crashes were the highest in 2015 during the five-year period from 2012 to 2016 at 14. [Page 10]
- A total of 86 crashes, 10 fatal crashes (the same count occurred in 2013), and 13 suspected serious injury crashes involved drugs in 2016, all the highest during the five-year period. [Page 11]
- There were 15,987 drivers wearing seatbelts and 148 drivers not wearing seatbelts in crashes in 2016. Of the 148 drivers not wearing seat belts, seven (4.7%) were killed and 37 (25.0%) were injured. [Pages 14-16]
- The most common hazardous action coded for drivers in 2016 in all crashes was unable to stop in assured clear distance (2,604), while the most common hazardous action coded for drivers in fatal crashes was speed too fast (12). [Page 17]

## Post 51 Experience

In 2016:

There were 18,594 drivers involved in 10,990 motor vehicle crashes in MSP Post 51. Of those crashes, 43 were classified as fatal, resulting in 50 fatalities. An additional 2,691 persons were injured.

Post 51 experienced the highest number of motor vehicle crashes (1,319) in December, the highest number of fatal crashes (7) in April, and the highest number of persons killed (11) in June.

Michigan driver statistics indicate 7.0 percent of licensed drivers in Post 51 were age 16-20, and 12.2 percent of drivers in crashes were also in that age group.

## 2016 - Crashes and Injuries by Month

Month	Crashes				Persons	
	Total	Fatal	Injury	Property Damage Only (PDO)	Fatalities	Injuries
January	1,070	2	151	917	3	218
February	1,135	3	180	952	3	231
March	785	3	130	652	3	169
April	700	7	138	555	7	193
May	781	2	169	610	2	243
June	800	6	157	637	11	221
July	743	0	174	569	0	265
August	728	5	148	575	5	197
September	844	4	188	652	4	245
October	999	3	170	826	3	231
November	1,086	5	167	914	5	230
December	1,319	3	191	1,125	4	248
<b>Total</b>	<b>10,990</b>	<b>43</b>	<b>1,963</b>	<b>8,984</b>	<b>50</b>	<b>2,691</b>

## 2016 - Driver Statistics

Age Group	Statewide			Driver Rates	
	2016 Population	Licensed Drivers	Drivers in Crashes	Per 10k Population	Per 10k Licensed
0 - 15	66,225	1,665	27	4.1	162.2
16 - 20	26,764	16,639	2,264	845.9	1,360.7
21 - 24	28,889	18,233	2,259	782.0	1,239.0
25 - 64	164,764	155,780	10,830	657.3	695.2
65 +	50,235	45,564	1,770	352.3	388.5
Unknown	0	0	1,444	--	--
<b>Total</b>	<b>336,877</b>	<b>237,881</b>	<b>18,594</b>	<b>552.0</b>	<b>781.7</b>

## 2016 - Vehicles in Crashes

Vehicle Type	Motor Vehicles		Fatal Crashes		Injury Crashes	PDO Crashes
	Number of Vehicles	% of Total	Number	% of Total	Number	Number
Passenger car, SUV, van	15,215	81.8	44	63.8	2,874	12,297
Motor home	204	1.1	0	0.0	33	171
Pickup truck	1,837	9.9	11	15.9	351	1,475
Small truck under 10,000 lbs. GVWR	143	0.8	2	2.9	15	126
Motorcycle	125	0.7	5	7.2	80	40
Moped / goped	10	0.1	0	0.0	10	0
Go-cart / golf cart	3	0.0	0	0.0	3	0
Snowmobile	0	0.0	0	0.0	0	0
Off-Road Vehicle - ORV / All-Terrain Vehicle - ATV	7	0.0	0	0.0	5	2
Other	84	0.5	0	0.0	12	72
Truck/bus over 10,000 lbs.	530	2.9	7	10.1	98	425
Unknown	436	2.3	0	0.0	38	398
<b>Total</b>	<b>18,594</b>	<b>100.0</b>	<b>69</b>	<b>100.0</b>	<b>3,519</b>	<b>15,006</b>

## MSP Post 51 - Paw Paw (continued)

### 5-Year Trend - Crashes by Month

Month	2012		2013		2014		2015		2016	
	Total Crashes	Fatal Crashes	Total Crashes	Fatal Crashes	Total Crashes	Fatal Crashes	Total Crashes	Fatal Crashes	Total Crashes	Fatal Crashes
January	1,187	2	1,169	3	1,679	0	1,242	6	1,070	2
February	932	3	1,014	5	1,141	0	1,098	1	1,135	3
March	664	4	718	1	773	3	658	0	785	3
April	584	2	627	1	596	5	639	4	700	7
May	676	2	734	1	672	2	839	3	781	2
June	677	4	718	2	658	0	785	6	800	6
July	618	7	669	6	692	0	800	6	743	0
August	604	1	714	4	647	3	729	3	728	5
September	697	4	722	6	762	2	716	3	844	4
October	943	3	971	6	937	1	1,047	3	999	3
November	828	2	1,117	10	1,339	3	1,064	2	1,086	5
December	1,084	3	1,162	4	695	1	1,008	3	1,319	3
<b>Total</b>	<b>9,494</b>	<b>37</b>	<b>10,335</b>	<b>49</b>	<b>10,591</b>	<b>20</b>	<b>10,625</b>	<b>40</b>	<b>10,990</b>	<b>43</b>

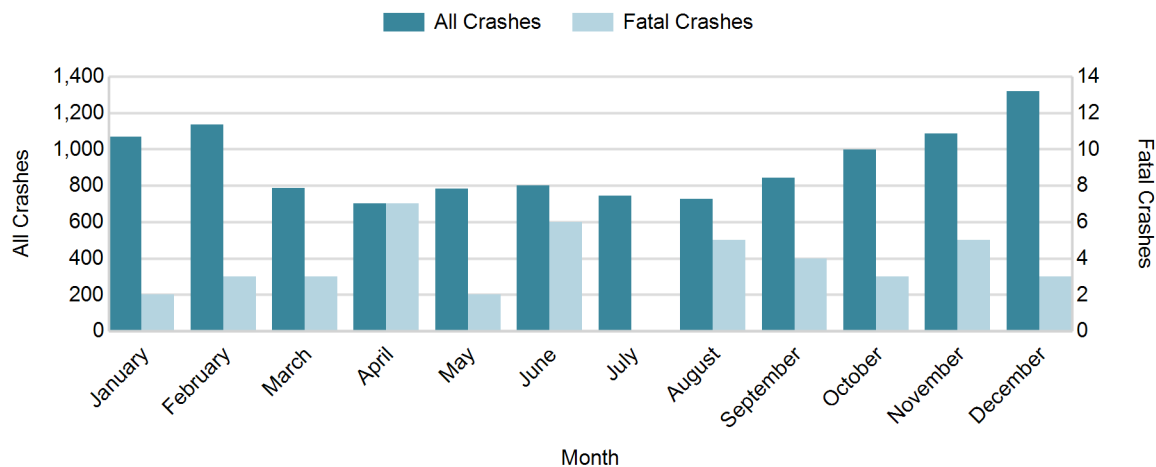
Note: † Indicates that the highest number of total crashes reported in the 5-year period occurred in the same month

### 5-Year Trend - Crashes by Day of Week

Day	2012		2013		2014		2015		2016	
	Total Crashes	Fatal Crashes	Total Crashes	Fatal Crashes	Total Crashes	Fatal Crashes	Total Crashes	Fatal Crashes	Total Crashes	Fatal Crashes
Monday	1,392	10	1,564	7	1,477	1	1,470	5	1,547	5
Tuesday	1,306	5	1,627	7	1,530	4	1,537	4	1,544	3
Wednesday	1,429	4	1,696	1	1,680	3	1,724	0	1,611	6
Thursday	1,325	2	1,590	9	1,835	5	1,537	7	1,799	5
Friday	1,826	5	1,517	12	1,807	2	1,758	7	1,852	7
Saturday	1,293	4	1,307	7	1,268	4	1,509	11	1,431	8
Sunday	923	7	1,034	6	994	1	1,090	6	1,206	9
<b>Total</b>	<b>9,494</b>	<b>37</b>	<b>10,335</b>	<b>49</b>	<b>10,591</b>	<b>20</b>	<b>10,625</b>	<b>40</b>	<b>10,990</b>	<b>43</b>

Note: † Indicates that the highest number of total crashes reported in the 5-year period occurred on the same day of the week

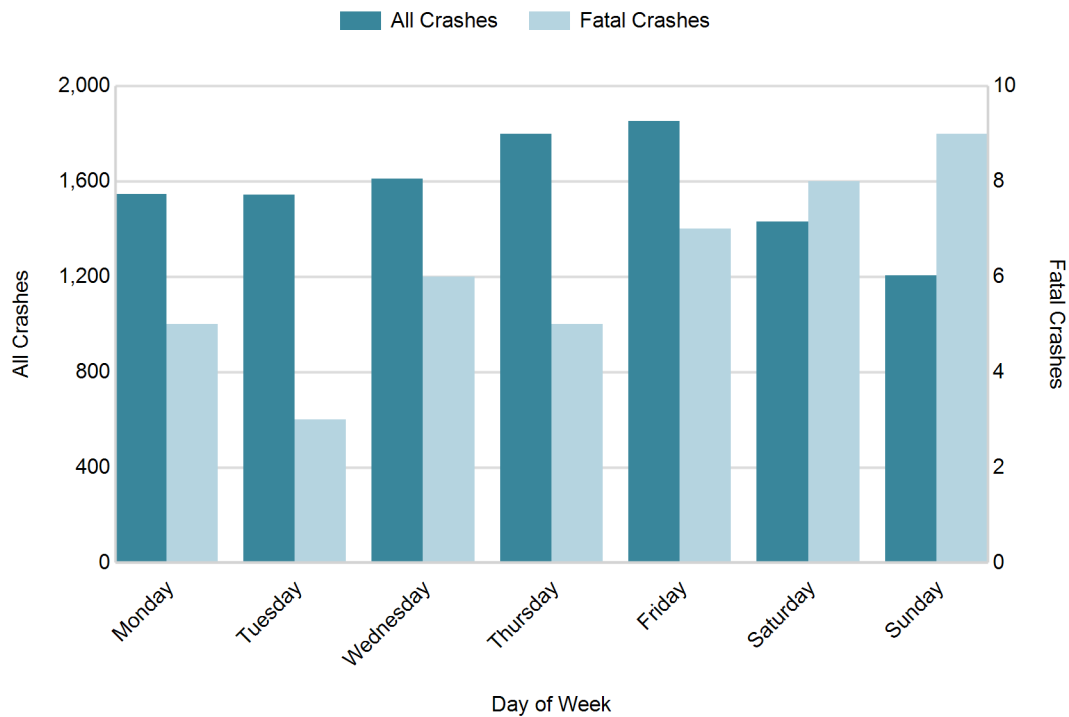
### 2016 Crashes by Month



## 2016 - Crashes by Day of Week

Day	All Crashes		Fatal Crashes		Injury Crashes			PDO Crashes
	Number	% of Total	Number	% of Fatal	A	B	C	Number
Monday	1,547	14.1	5	11.6	24	70	168	1,280
Tuesday	1,544	14.0	3	7.0	19	74	176	1,272
Wednesday	1,611	14.7	6	14.0	17	64	197	1,327
Thursday	1,799	16.4	5	11.6	19	77	202	1,496
Friday	1,852	16.9	7	16.3	36	83	229	1,497
Saturday	1,431	13.0	8	18.6	31	82	166	1,144
Sunday	1,206	11.0	9	20.9	33	59	137	968
<b>Total</b>	<b>10,990</b>	<b>100.0</b>	<b>43</b>	<b>100.0</b>	<b>179</b>	<b>509</b>	<b>1,275</b>	<b>8,984</b>

## 2016 Day of Week and Severity

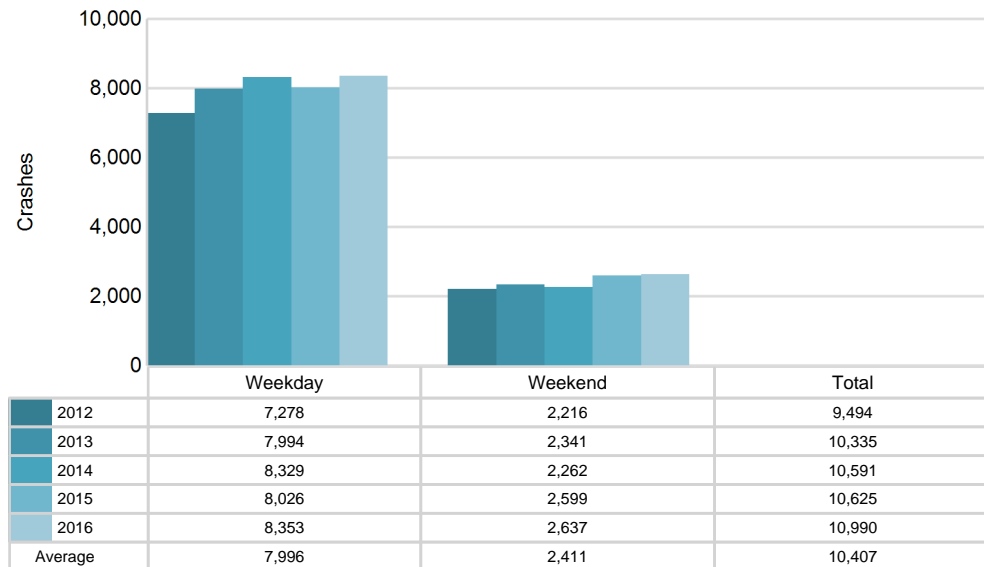


## MSP Post 51 - Paw Paw (continued)

### 5-Year Trend - Crashes by Weekday and Weekend

Portion of Week	2012		2013		2014		2015		2016	
	Total Crashes	Fatal Crashes	Total Crashes	Fatal Crashes	Total Crashes	Fatal Crashes	Total Crashes	Fatal Crashes	Total Crashes	Fatal Crashes
Weekday	7,278	26	7,994	36	8,329	15	8,026	23	8,353	26
Weekend	2,216	11	2,341	13	2,262	5	2,599	17	2,637	17
<b>Total</b>	<b>9,494</b>	<b>37</b>	<b>10,335</b>	<b>49</b>	<b>10,591</b>	<b>20</b>	<b>10,625</b>	<b>40</b>	<b>10,990</b>	<b>43</b>

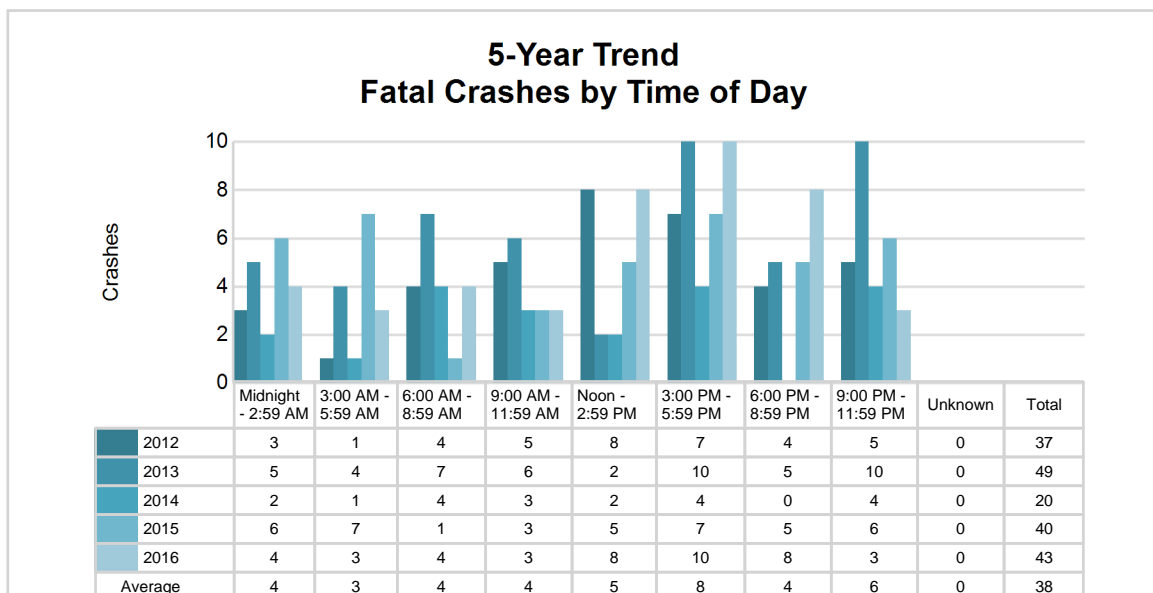
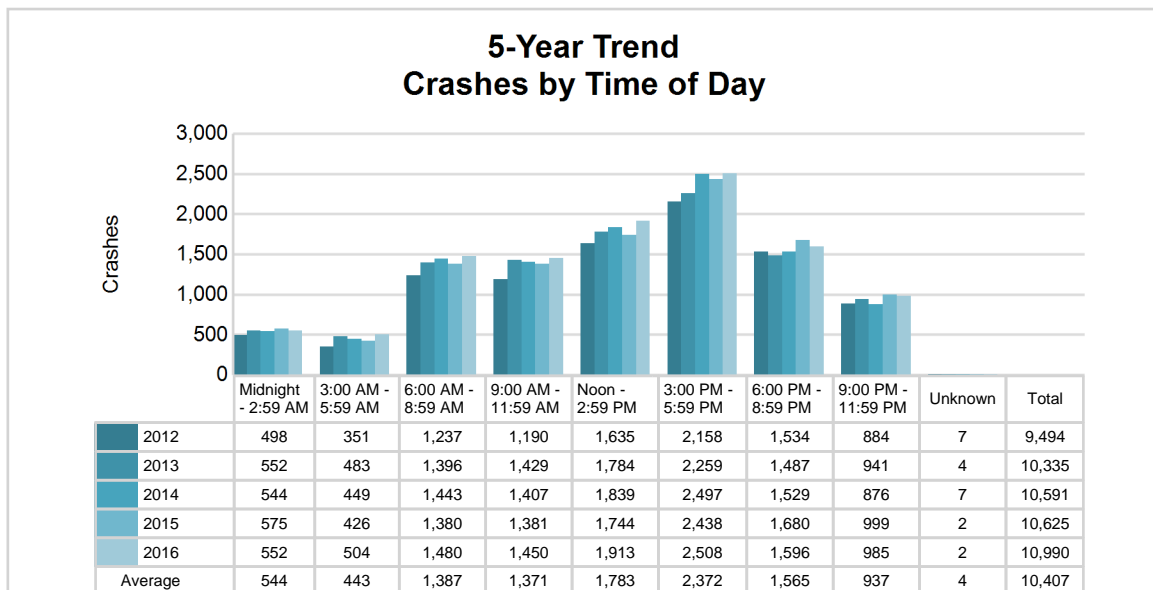
### 5-Year Crash Trends by Weekday (Monday - Friday) and Weekend (Saturday & Sunday)



## 5-Year Trend - Crashes by Time of Day

Time of Day	2012		2013		2014		2015		2016	
	Total Crashes	Fatal Crashes	Total Crashes	Fatal Crashes	Total Crashes	Fatal Crashes	Total Crashes	Fatal Crashes	Total Crashes	Fatal Crashes
Midnight - 2:59 AM	498	3	552	5	544	2	575	6	552	4
3:00 AM - 5:59 AM	351	1	483	4	449	1	426	7	504	3
6:00 AM - 8:59 AM	1,237	4	1,396	7	1,443	4	1,380	1	1,480	4
9:00 AM - 11:59 AM	1,190	5	1,429	6	1,407	3	1,381	3	1,450	3
Noon - 2:59 PM	1,635	8	1,784	2	1,839	2	1,744	5	1,913	8
3:00 PM - 5:59 PM	2,158 †	7	2,259 †	10	2,497 †	4	2,438 †	7	2,508 †	10
6:00 PM - 8:59 PM	1,534	4	1,487	5	1,529	0	1,680	5	1,596	8
9:00 PM - 11:59 PM	884	5	941	10	876	4	999	6	985	3
Unknown	7	0	4	0	7	0	2	0	2	0
<b>Total</b>	<b>9,494</b>	<b>37</b>	<b>10,335</b>	<b>49</b>	<b>10,591</b>	<b>20</b>	<b>10,625</b>	<b>40</b>	<b>10,990</b>	<b>43</b>

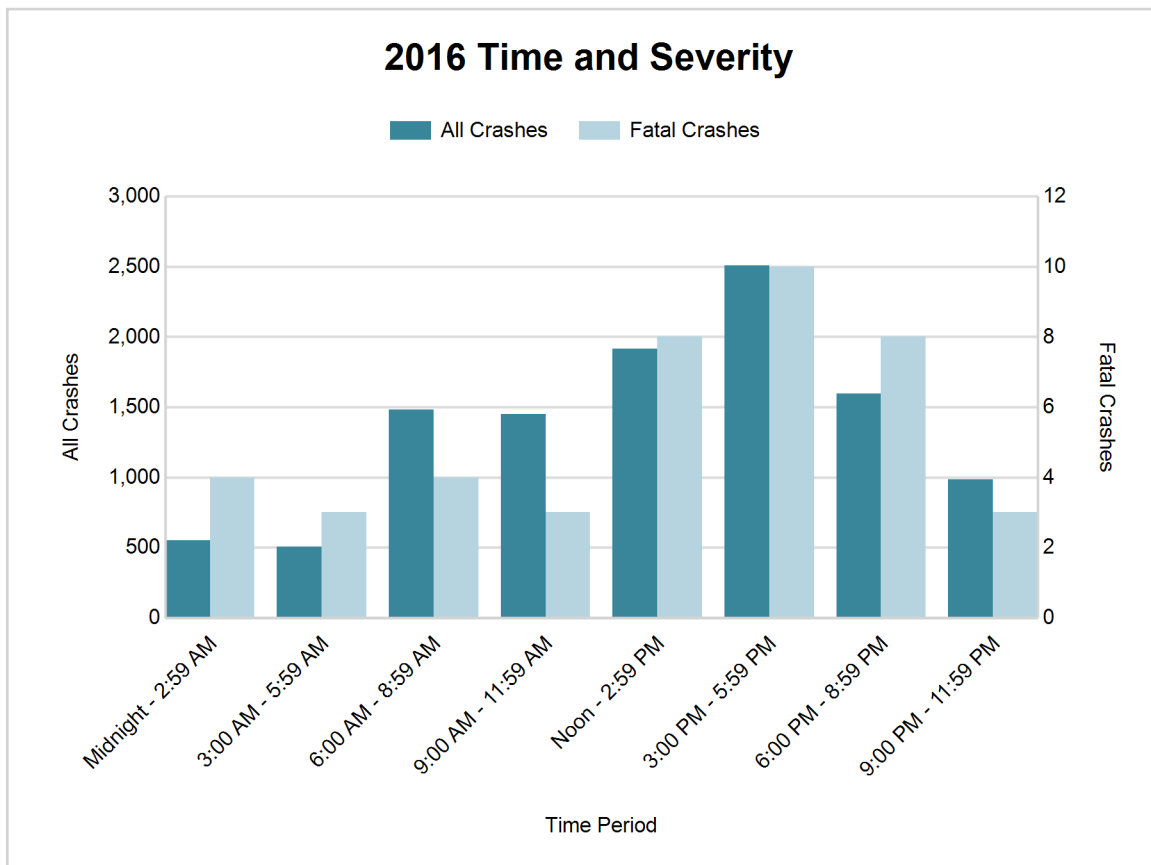
Note: † Indicates that the highest number of total crashes reported in the 5-year period occurred in the same time period



# MSP Post 51 - Paw Paw (continued)

## 2016 - Time and Severity

Time of Day	All Crashes		Fatal Crashes		Injury Crashes			PDO Crashes
	Number	% of Total	Number	% of Fatal	A	B	C	Number
Midnight - 2:59 AM	552	5.0	4	9.3	8	31	47	462
3:00 AM - 5:59 AM	504	4.6	3	7.0	13	25	34	429
6:00 AM - 8:59 AM	1,480	13.5	4	9.3	19	51	161	1,245
9:00 AM - 11:59 AM	1,450	13.2	3	7.0	18	82	189	1,158
Noon - 2:59 PM	1,913	17.4	8	18.6	24	85	236	1,560
3:00 PM - 5:59 PM	2,508	22.8	10	23.3	42	134	320	2,002
6:00 PM - 8:59 PM	1,596	14.5	8	18.6	34	58	175	1,321
9:00 PM - 11:59 PM	985	9.0	3	7.0	21	43	113	805
Unknown	2	0.0	0	0.0	0	0	0	2
<b>Total</b>	<b>10,990</b>	<b>100.0</b>	<b>43</b>	<b>100.0</b>	<b>179</b>	<b>509</b>	<b>1,275</b>	<b>8,984</b>

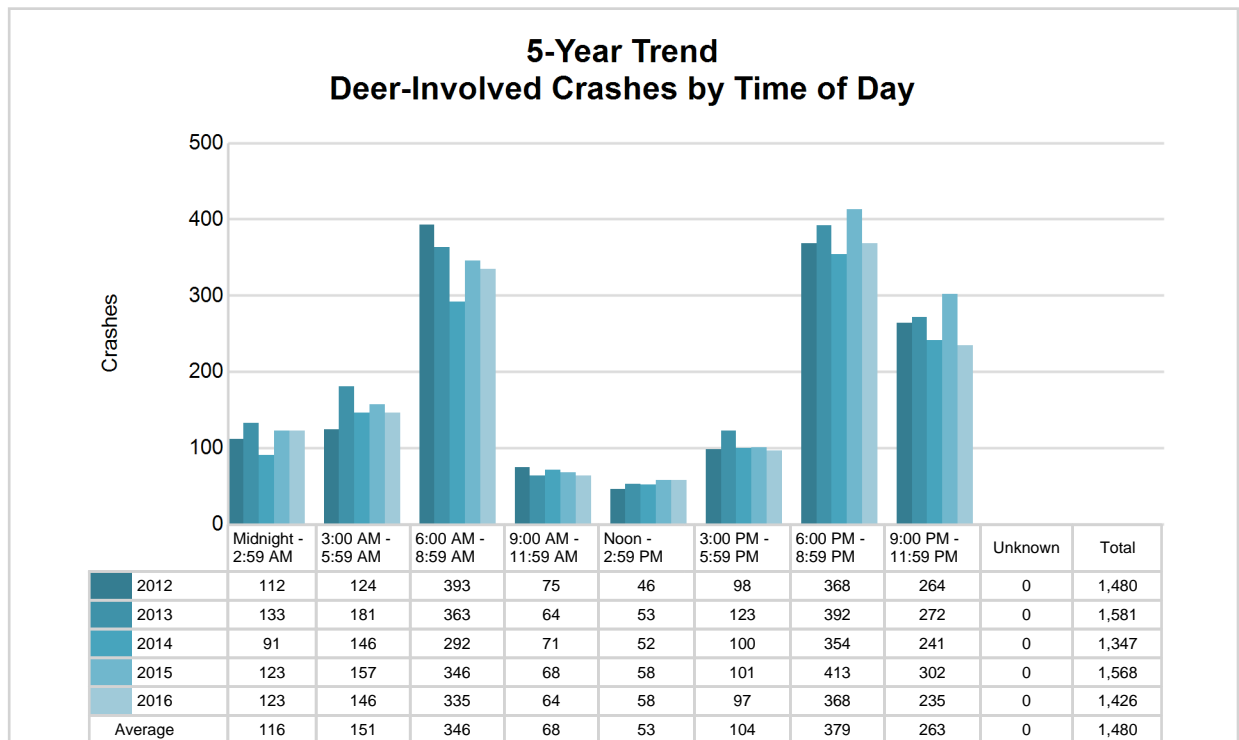


# MSP Post 51 - Paw Paw (continued)

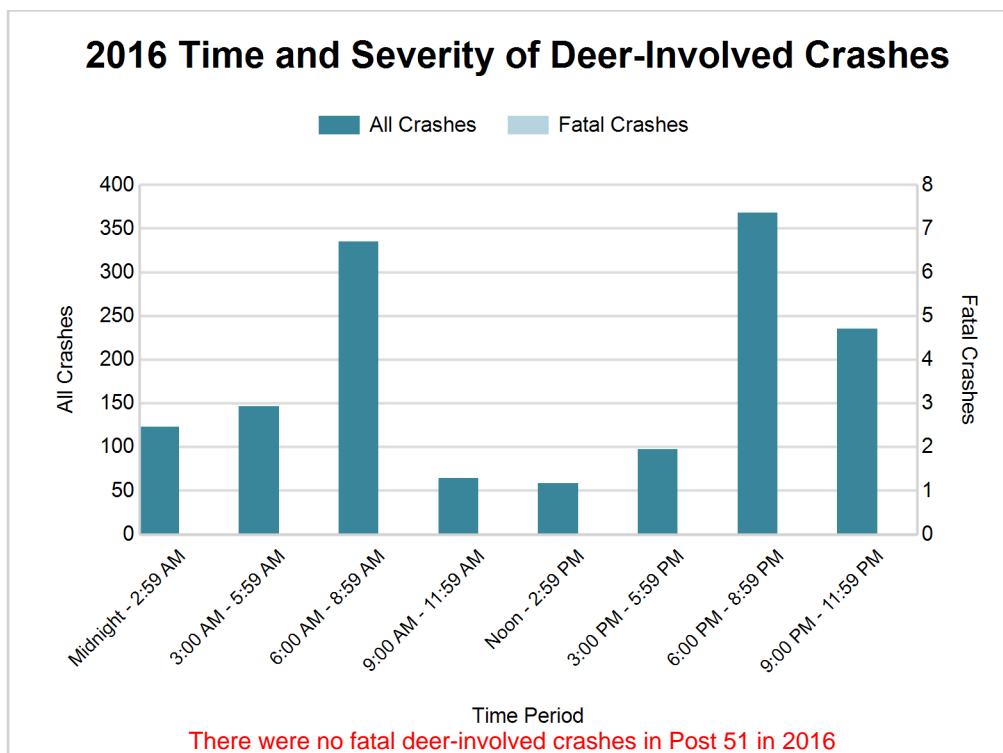
## 5-Year Trend - Deer-Involved Crashes by Time of Day

Time of Day	2012		2013		2014		2015		2016	
	Total Crashes	Fatal Crashes	Total Crashes	Fatal Crashes	Total Crashes	Fatal Crashes	Total Crashes	Fatal Crashes	Total Crashes	Fatal Crashes
Midnight - 2:59 AM	112	0	133	0	91	0	123	1	123	0
3:00 AM - 5:59 AM	124	0	181	1	146	0	157	0	146	0
6:00 AM - 8:59 AM	393	0	363	0	292	0	346	0	335	0
9:00 AM - 11:59 AM	75	0	64	0	71	0	68	0	64	0
Noon - 2:59 PM	46	1	53	0	52	0	58	0	58	0
3:00 PM - 5:59 PM	98	0	123	0	100	0	101	1	97	0
6:00 PM - 8:59 PM	368	0	392	1	354	0	413	0	368	0
9:00 PM - 11:59 PM	264	0	272	0	241	0	302	0	235	0
Unknown	0	0	0	0	0	0	0	0	0	0
<b>Total</b>	<b>1,480</b>	<b>1</b>	<b>1,581</b>	<b>2</b>	<b>1,347</b>	<b>0</b>	<b>1,568</b>	<b>2</b>	<b>1,426</b>	<b>0</b>

Note: † Indicates that the highest number of total crashes reported in the 5-year period occurred in the same time period



## MSP Post 51 - Paw Paw (continued)



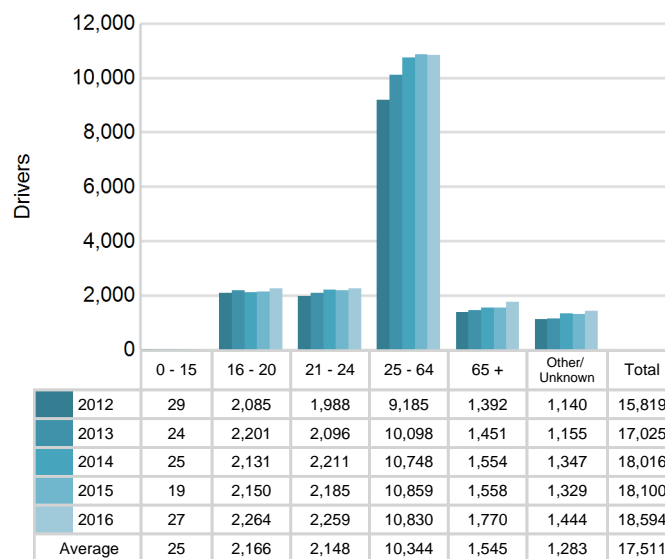
### 2016 - Reported Motor Vehicle Crashes by County

County	Crashes											Persons	
	Total	Fatal	Injury	Property Damage	Inter-state	US Route	State Route	Local Street	Alcohol-Involved	Drug-Involved	Deer-Involved	Fatalities	Injuries
Kalamazoo	8,591	31	1,556	7,004	1,332	546	1,512	5,192	290	53	806	35	2,097
Van Buren	2,399	12	407	1,980	607	0	482	1,300	109	33	620	15	594
<b>Total</b>	<b>10,990</b>	<b>43</b>	<b>1,963</b>	<b>8,984</b>	<b>1,939</b>	<b>546</b>	<b>1,994</b>	<b>6,492</b>	<b>399</b>	<b>86</b>	<b>1,426</b>	<b>50</b>	<b>2,691</b>

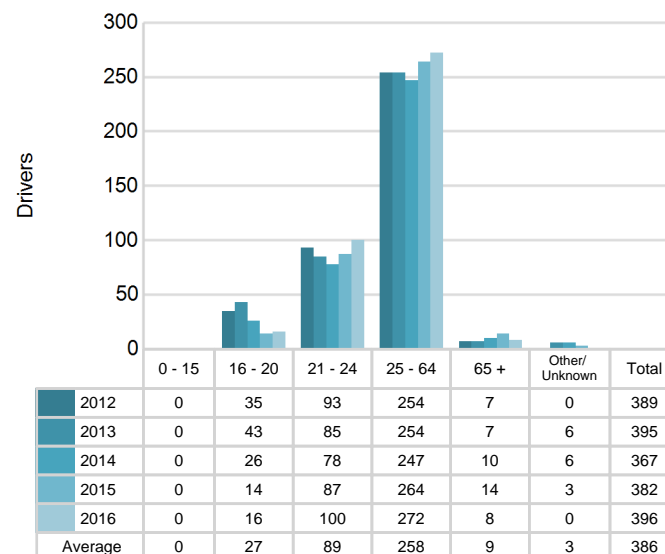
## 5-Year Trend - Drivers in Crashes Coded Drinking by Driver Age

Driver Age	2012		2013		2014		2015		2016	
	Total Drivers in Crashes	Total Drivers Coded Drinking	Total Drivers in Crashes	Total Drivers Coded Drinking	Total Drivers in Crashes	Total Drivers Coded Drinking	Total Drivers in Crashes	Total Drivers Coded Drinking	Total Drivers in Crashes	Total Drivers Coded Drinking
0 - 15	29	0	24	0	25	0	19	0	27	0
16 - 20	2,085	35	2,201	43	2,131	26	2,150	14	2,264	16
21 - 24	1,988	93	2,096	85	2,211	78	2,185	87	2,259	100
25 - 64	9,185	254	10,098	254	10,748	247	10,859	264	10,830	272
65 +	1,392	7	1,451	7	1,554	10	1,558	14	1,770	8
Unknown	1,140	0	1,155	6	1,347	6	1,329	3	1,444	0
<b>Total</b>	<b>15,819</b>	<b>389</b>	<b>17,025</b>	<b>395</b>	<b>18,016</b>	<b>367</b>	<b>18,100</b>	<b>382</b>	<b>18,594</b>	<b>396</b>

### 5-Year Trend Total Drivers in Crashes by Age



### 5-Year Trend Total Drivers Coded Drinking by Age



**2016 - Bodily Alcohol Concentration (BAC) Results Among All Vehicle Drivers in Alcohol-Involved Crashes by Age**

Age Group	Drivers				BAC Result Range for Drivers Coded Drinking				
	Total Drivers in Alcohol-Involved Crashes	Total Drivers Tested in all Crashes	Total Drivers Coded Drinking, Tested	Total Drivers Coded Drinking	BAC = 0.00	BAC 0.01 g/dL to 0.07 g/dL	BAC 0.08 g/dL to 0.16 g/dL	BAC 0.17 g/dL and Above	BAC Not Reported
0 - 15	0	0	0	0	0	0	0	0	0
16 - 20	28	42	14	16	0	1	9	1	5
21 - 24	121	109	92	100	0	10	39	34	17
25 - 64	357	298	231	272	2	23	73	82	92
65 +	22	15	7	8	0	2	3	2	1
Unknown	30	4	0	0	0	0	0	0	0
<b>Total</b>	<b>558</b>	<b>468</b>	<b>344</b>	<b>396</b>	<b>2</b>	<b>36</b>	<b>124</b>	<b>119</b>	<b>115</b>

Notes: BAC measured in grams (g) per deciliter (dL).

BAC may not be reported if drivers are not tested or if the results are not available immediately (as in the case of a blood test).

A driver may be coded by the officer as drinking even though no test is administered.

**Alcohol-Involved Crashes**

In 2016, there were 558 drivers in alcohol-involved crashes; 396 (71.0%) of those drivers were coded as had-been-drinking by the officer on the crash form.

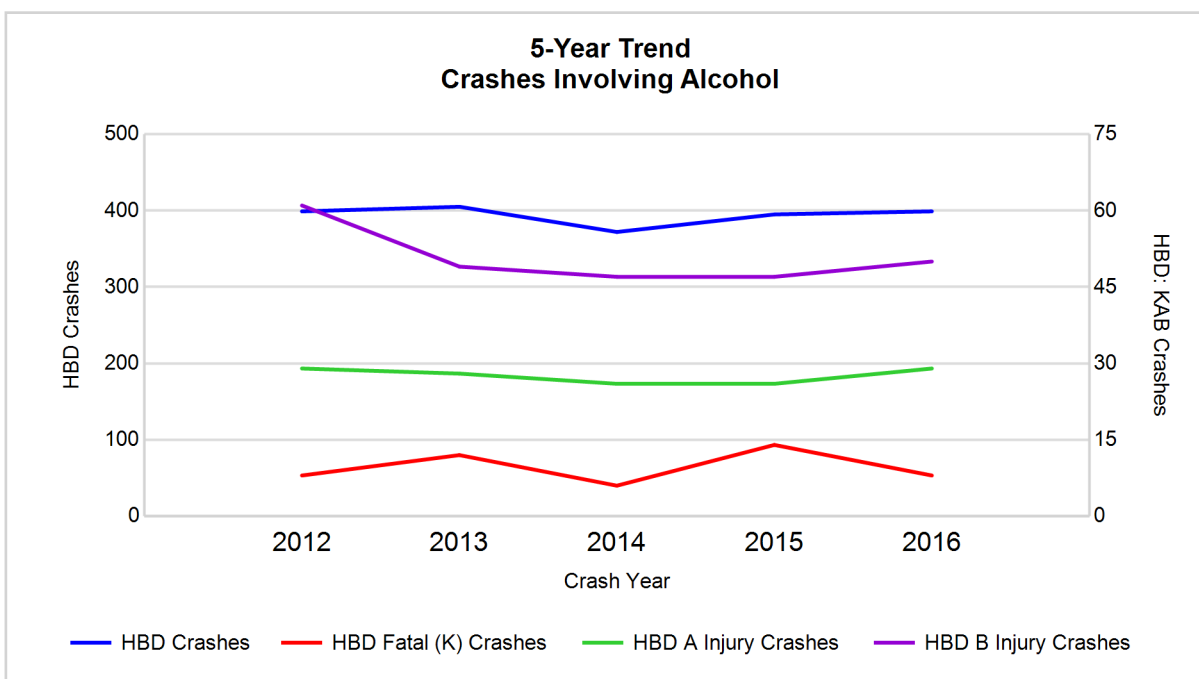
- 243 (61.4%) of the 396 drivers had a blood alcohol concentration (BAC) of 0.08 g/dL (grams per deciliter) or greater, and 119 (49.0%) of the 243 drivers had a BAC at or above 0.17 g/dL.
- 344 (86.9%) of the 396 drivers were coded as had-been-drinking and were tested for alcohol consumption.

**5-Year Trend - Crashes Involving Alcohol**

Year	All Crashes	HBD Crashes	% HBD	Fatal Crashes	HBD Fatal Crashes	% HBD	A Injury Crashes	HBD A Injury Crashes	% HBD	B Injury Crashes	HBD B Injury Crashes	% HBD
2012	9,494	399	4.2	37	8	21.6	158	29	18.4	403	61	15.1
2013	10,335	405	3.9	49	12	24.5	151	28	18.5	405	49	12.1
2014	10,591	372	3.5	20	6	30.0	161	26	16.1	446	47	10.5
2015	10,625	395	3.7	40	14	35.0	140	26	18.6	452	47	10.4
2016	10,990**	399	3.6	43	8	18.6*	179**	29	16.2	509**	50	9.8*

Note: \* Indicates that the most recent year is the lowest number or percentage reported in the 5-year period in that column

\*\* Indicates that the most recent year is the highest number or percentage reported in the 5-year period in that column



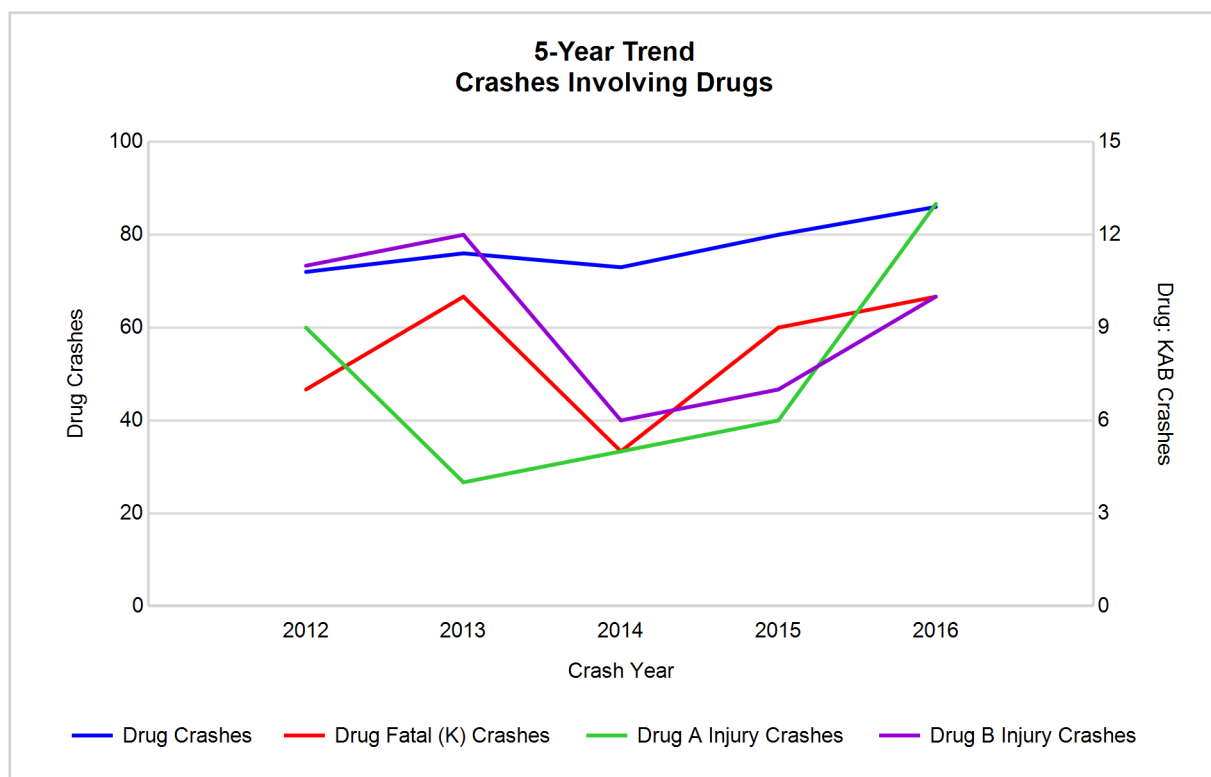
Note: Had-Been-Drinking (HBD)

## 5-Year Trend - Crashes Involving Drugs

Year	All Crashes	Drug Crashes	% Drug	Fatal Crashes	Drug Fatal Crashes	% Drug	A Injury Crashes	Drug A Injury Crashes	% Drug	B Injury Crashes	Drug B Injury Crashes	% Drug
2012	9,494	72	0.8	37	7	18.9	158	9	5.7	403	11	2.7
2013	10,335	76	0.7	49	10	20.4	151	4	2.6	405	12	3.0
2014	10,591	73	0.7	20	5	25.0	161	5	3.1	446	6	1.3
2015	10,625	80	0.8	40	9	22.5	140	6	4.3	452	7	1.5
2016	10,990**	86**	0.8	43	10	23.3	179**	13**	7.3**	509**	10	2.0

Note: \* Indicates that the most recent year is the lowest number or percentage reported in the 5-year period in that column

\*\* Indicates that the most recent year is the highest number or percentage reported in the 5-year period in that column

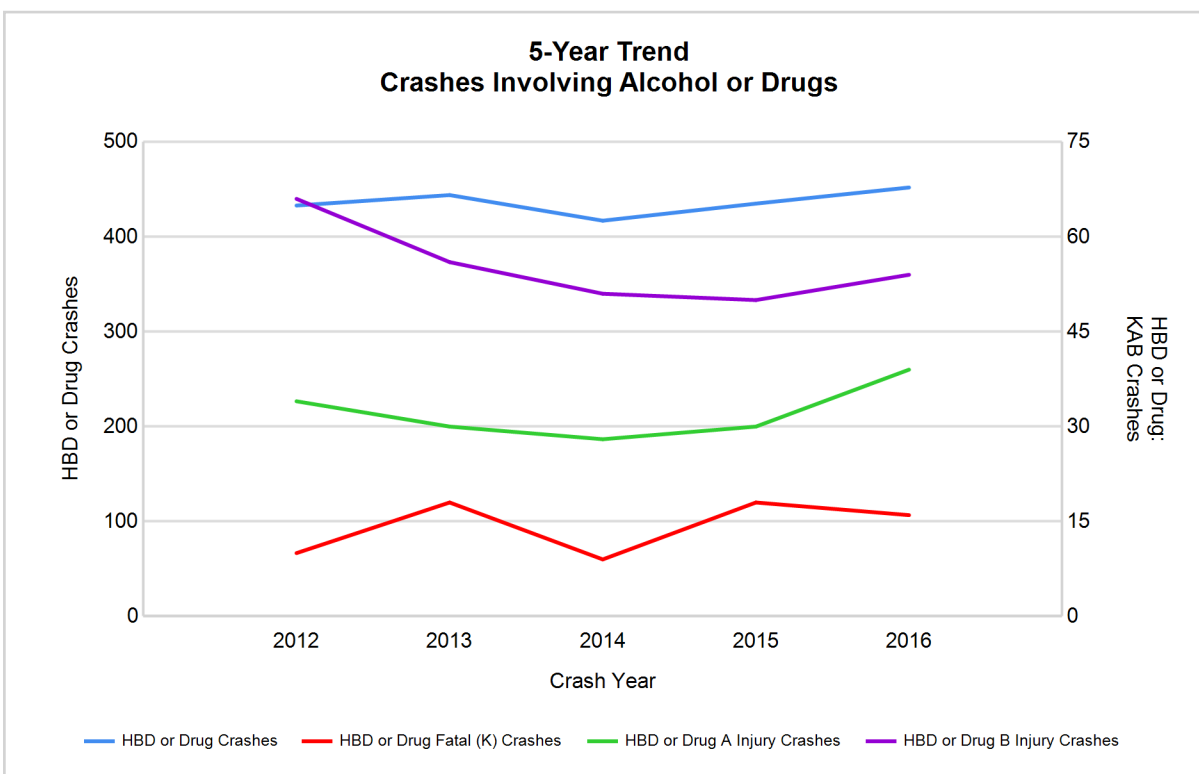


## 5-Year Trend - Crashes Involving Alcohol or Drugs

Year	All Crashes	HBD or Drug Crashes	% HBD or Drug	Fatal Crashes	HBD or Drug Fatal Crashes	% HBD or Drug	A Injury Crashes	HBD or Drug A Injury Crashes	% HBD or Drug	B Injury Crashes	HBD or Drug B Injury Crashes	% HBD or Drug
2012	9,494	433	4.6	37	10	27.0	158	34	21.5	403	66	16.4
2013	10,335	444	4.3	49	18	36.7	151	30	19.9	405	56	13.8
2014	10,591	417	3.9	20	9	45.0	161	28	17.4	446	51	11.4
2015	10,625	435	4.1	40	18	45.0	140	30	21.4	452	50	11.1
2016	10,990**	452**	4.1	43	16	37.2	179**	39**	21.8**	509**	54	10.6*

Note: \* Indicates that the most recent year is the lowest number or percentage reported in the 5-year period in that column

\*\* Indicates that the most recent year is the highest number or percentage reported in the 5-year period in that column



Note: Had-Been-Drinking (HBD)

## 2016 - Restraints Worn Among Vehicle Drivers and Injured Passengers by Vehicle Type

Vehicle Type	Total Occupants			Fatalities			A - Suspected Serious			B - Suspected Minor			C - Possible Injury			No Injury		
	Total	Used Restraint	%	Total	Used Restraint	%	Total	Used Restraint	%	Total	Used Restraint	%	Total	Used Restraint	%	Total	Used Restraint	%
Passenger car, SUV, van	15,804	14,039	88.8	27	19	70.4	144	116	80.6	460	412	89.6	1,550	1,453	93.7	12,796	12,037	94.1
Motor home	212	185	87.3	0	0	0.0	0	0	0.0	3	2	66.7	23	21	91.3	172	162	94.2
Pickup truck	1,892	1,672	88.4	5	0	0.0	15	8	53.3	49	44	89.8	145	136	93.8	1,559	1,483	95.1
Small truck under 10,000 lbs. GVWR	144	128	88.9	1	0	0.0	1	1	100.0	3	3	100.0	6	6	100.0	124	118	95.2
Motorcycle	141	67	47.5	5	4	80.0	39	15	38.5	35	18	51.4	20	11	55.0	33	19	57.6
Moped / goped	10	2	20.0	0	0	0.0	3	0	0.0	4	0	0.0	2	2	100.0	1	0	0.0
Go-cart / golf cart	3	1	33.3	0	0	0.0	1	0	0.0	0	0	0.0	1	0	0.0	1	1	100.0
Snowmobile	0	0	0.0	0	0	0.0	0	0	0.0	0	0	0.0	0	0	0.0	0	0	0.0
Off-Road Vehicle - ORV / All-Terrain Vehicle - ATV	9	0	0.0	0	0	0.0	3	0	0.0	2	0	0.0	0	0	0.0	3	0	0.0
Other	84	54	64.3	0	0	0.0	0	0	0.0	1	0	0.0	1	0	0.0	69	54	78.3
Truck/bus over 10,000 lbs.	545	473	86.8	1	1	100.0	2	2	100.0	7	3	42.9	29	15	51.7	494	452	91.5
Unknown	436	0	0.0	0	0	0.0	0	0	0.0	0	0	0.0	0	0	0.0	0	0	0.0
<b>Total</b>	<b>19,280</b>	<b>16,621</b>	<b>86.2</b>	<b>39</b>	<b>24</b>	<b>61.5</b>	<b>208</b>	<b>142</b>	<b>68.3</b>	<b>564</b>	<b>482</b>	<b>85.5</b>	<b>1,777</b>	<b>1,644</b>	<b>92.5</b>	<b>15,252</b>	<b>14,326</b>	<b>93.9</b>

Note: Restraint Use includes shoulder belt only used, lap belt only used, both lap and shoulder belts used, child restraint used, restraint failure, and helmet worn.

## 2016 - Restraints Worn Among Vehicle Drivers and Injured Passengers by Age

Age Group	Total Occupants			Fatalities			A - Suspected Serious			B - Suspected Minor			C - Possible Injury			No Injury		
	Total	Used Restraint	%	Total	Used Restraint	%	Total	Used Restraint	%	Total	Used Restraint	%	Total	Used Restraint	%	Total	Used Restraint	%
0 - 15	208	170	81.7	1	0	0.0	8	4	50.0	46	36	78.3	131	111	84.7	22	19	86.4
16 - 20	2,376	2,234	94.0	9	6	66.7	30	20	66.7	87	77	88.5	241	227	94.2	2,005	1,904	95.0
21 - 24	2,325	2,146	92.3	3	2	66.7	28	21	75.0	75	63	84.0	196	181	92.3	2,018	1,879	93.1
25 - 64	11,097	10,318	93.0	20	12	60.0	113	74	65.5	286	240	83.9	1,056	973	92.1	9,599	9,019	94.0
65 +	1,830	1,742	95.2	6	4	66.7	29	23	79.3	70	66	94.3	153	152	99.3	1,569	1,497	95.4
Unknown	1,444	11	0.8	0	0	0.0	0	0	0.0	0	0	0.0	0	0	0.0	39	8	20.5
<b>Total</b>	<b>19,280</b>	<b>16,621</b>	<b>86.2</b>	<b>39</b>	<b>24</b>	<b>61.5</b>	<b>208</b>	<b>142</b>	<b>68.3</b>	<b>564</b>	<b>482</b>	<b>85.5</b>	<b>1,777</b>	<b>1,644</b>	<b>92.5</b>	<b>15,252</b>	<b>14,326</b>	<b>93.9</b>

Note: Restraint Use includes shoulder belt only used, lap belt only used, both lap and shoulder belts used, child restraint used, restraint failure, and helmet worn.

## 5-Year Trend - Restraint Use Among Drivers

Restraint Use	2012			2013			2014			2015			2016		
	Drivers	Fatal Drivers	Injured Drivers	Drivers	Fatal Drivers	Injured Drivers	Drivers	Fatal Drivers	Injured Drivers	Drivers	Fatal Drivers	Injured Drivers	Drivers	Fatal Drivers	Injured Drivers
No belts available	82	1	10	69	1	6	76	0	12	73	1	10	47	0	6
Shoulder belt only used	48	0	1	62	0	8	195	0	7	97	0	6	115	0	12
Lap belt only used	64	0	6	59	0	2	54	0	6	101	0	9	76	0	14
Both lap & shoulder belts used	13,854	13	1,304	14,939	17	1,427	15,581	8	1,476	15,686	11	1,441	15,791	16	1,636
No belts used	104	5	47	108	7	41	112	5	36	96	10	28	101	7	31
Child restraint used	0	0	0	0	0	0	1	0	0	0	0	0	1	0	0
Child restraint not used, unavailable or improper use	0	0	0	2	0	0	0	0	0	0	0	0	0	0	0
Restraint failure	8	0	0	1	0	0	2	0	0	6	0	1	5	0	0
Restraint use unknown	448	3	44	580	5	60	610	1	51	656	5	64	1,999	6	79
Helmet worn	113	7	84	104	2	72	85	1	60	80	3	63	61	4	38
Helmet not worn	57	1	45	39	3	30	52	1	41	58	3	39	69	1	47
Helmet use unknown	6	0	2	9	0	4	7	1	3	12	0	5	7	0	5
Uncoded & errors	1,035	0	1	1,053	0	0	1,241	0	3	1,235	0	2	322	0	0
<b>Total</b>	<b>15,819</b>	<b>30</b>	<b>1,544</b>	<b>17,025</b>	<b>35</b>	<b>1,650</b>	<b>18,016</b>	<b>17</b>	<b>1,695</b>	<b>18,100</b>	<b>33</b>	<b>1,668</b>	<b>18,594</b>	<b>34</b>	<b>1,868</b>

## 5-Year Trend - Restraint Use Among Drivers Coded Drinking

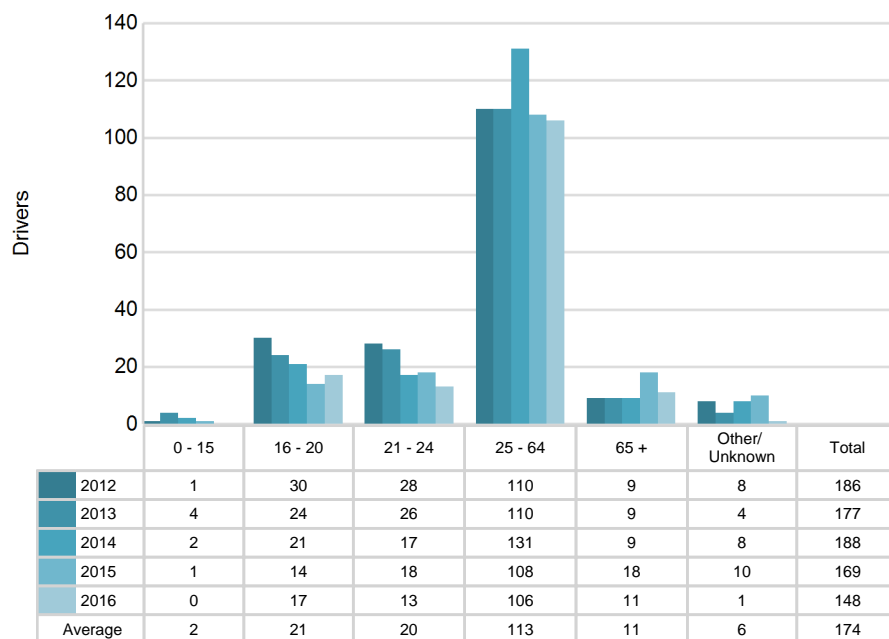
Restraint Use	2012			2013			2014			2015			2016		
	Drivers	Fatal Drivers	Injured Drivers	Drivers	Fatal Drivers	Injured Drivers	Drivers	Fatal Drivers	Injured Drivers	Drivers	Fatal Drivers	Injured Drivers	Drivers	Fatal Drivers	Injured Drivers
No belts available	3	1	1	2	0	1	2	0	0	2	1	0	2	0	1
Shoulder belt only used	4	0	0	4	0	0	1	0	0	1	0	1	6	0	0
Lap belt only used	2	0	0	1	0	1	1	0	1	2	0	0	1	0	1
Both lap & shoulder belts used	298	2	79	260	2	64	268	1	58	268	3	55	293	1	76
No belts used	20	1	15	25	4	14	23	2	14	19	4	11	10	2	6
Child restraint used	0	0	0	0	0	0	0	0	0	0	0	0	0	0	0
Child restraint not used, unavailable or improper use	0	0	0	0	0	0	0	0	0	0	0	0	0	0	0
Restraint failure	1	0	0	0	0	0	0	0	0	0	0	0	0	0	0
Restraint use unknown	47	0	14	89	2	19	53	1	11	75	0	17	71	2	14
Helmet worn	6	1	5	4	0	2	7	0	7	5	2	3	3	0	3
Helmet not worn	8	0	7	5	1	3	8	1	7	8	1	7	9	0	6
Helmet use unknown	0	0	0	0	0	0	0	0	0	0	0	0	1	0	1
Uncoded & errors	0	0	0	5	0	0	4	0	0	2	0	1	0	0	0
<b>Total</b>	<b>389</b>	<b>5</b>	<b>121</b>	<b>395</b>	<b>9</b>	<b>104</b>	<b>367</b>	<b>5</b>	<b>98</b>	<b>382</b>	<b>11</b>	<b>95</b>	<b>396</b>	<b>5</b>	<b>108</b>

## 5-Year Trend - Seatbelt Not Used Among Drivers by Age

Age Group	2012			2013			2014			2015			2016		
	Drivers	Fatal Drivers	Injured Drivers	Drivers	Fatal Drivers	Injured Drivers	Drivers	Fatal Drivers	Injured Drivers	Drivers	Fatal Drivers	Injured Drivers	Drivers	Fatal Drivers	Injured Drivers
0 - 15	1	0	0	4	0	0	2	0	0	1	0	0	0	0	0
16 - 20	30	1	9	24	0	7	21	2	4	14	1	1	17	2	3
21 - 24	28	0	12	26	0	10	17	2	3	18	1	10	13	0	2
25 - 64	110	4	36	110	7	29	131	1	37	108	5	21	106	4	30
65 +	9	1	0	9	1	1	9	0	4	18	4	5	11	1	2
Unknown	8	0	0	4	0	0	8	0	0	10	0	1	1	0	0
<b>Total</b>	<b>186</b>	<b>6</b>	<b>57</b>	<b>177</b>	<b>8</b>	<b>47</b>	<b>188</b>	<b>5</b>	<b>48</b>	<b>169</b>	<b>11</b>	<b>38</b>	<b>148</b>	<b>7</b>	<b>37</b>

Note: Seatbelt Not Used includes no belts available or no belts used.

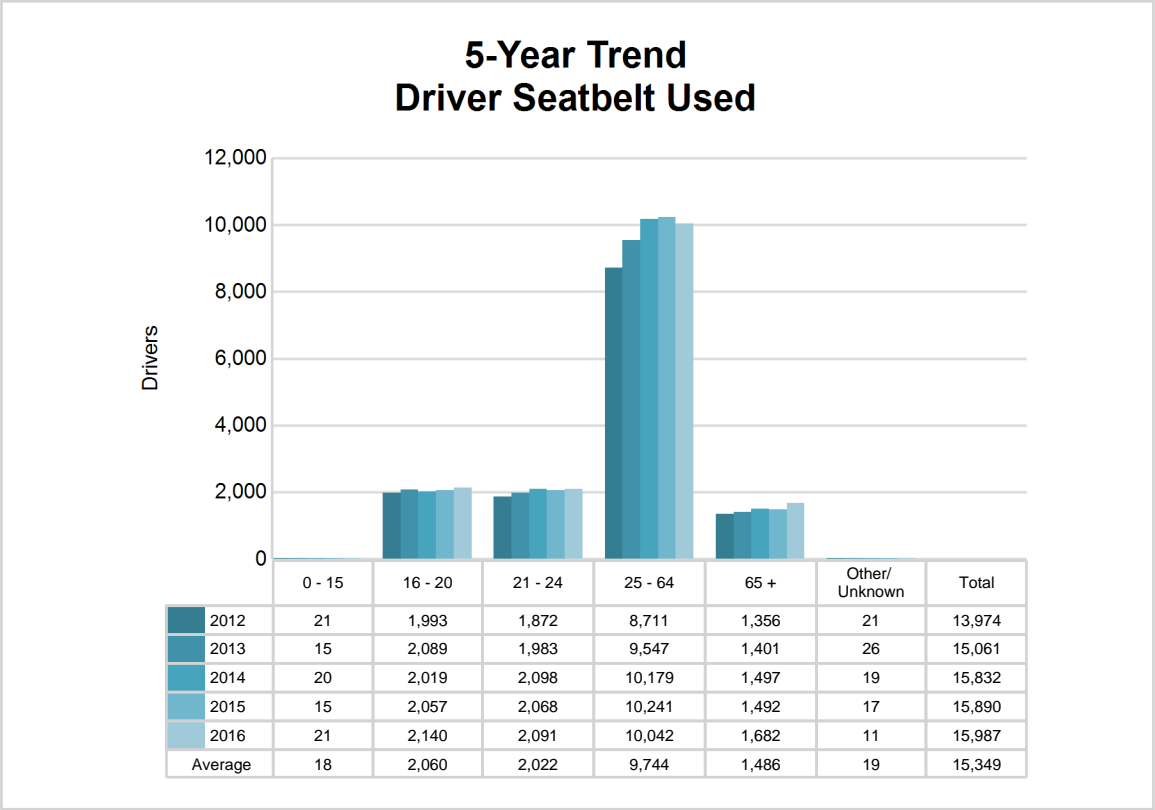
## 5-Year Trend Driver Seatbelt Not Used



5-Year Trend - Seatbelt Used Among Drivers by Age

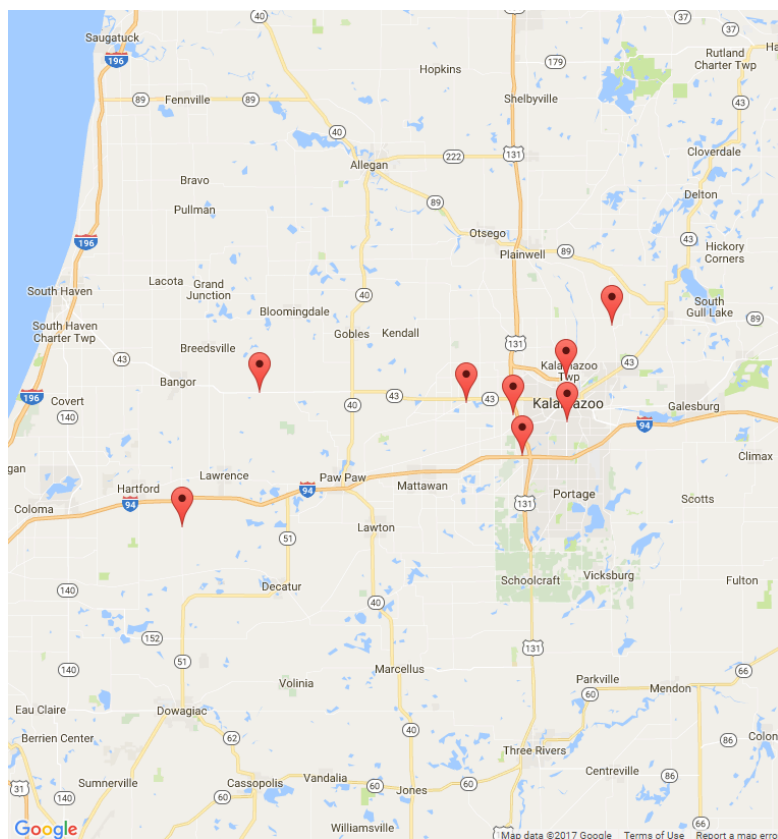
Age Group	2012			2013			2014			2015			2016		
	Drivers	Fatal Drivers	Injured Drivers	Drivers	Fatal Drivers	Injured Drivers	Drivers	Fatal Drivers	Injured Drivers	Drivers	Fatal Drivers	Injured Drivers	Drivers	Fatal Drivers	Injured Drivers
0 - 15	21	0	2	15	0	0	20	0	2	15	0	1	21	0	2
16 - 20	1,993	2	157	2,089	2	183	2,019	0	191	2,057	2	193	2,140	3	233
21 - 24	1,872	4	156	1,983	1	171	2,098	2	171	2,068	1	171	2,091	1	212
25 - 64	8,711	4	832	9,547	6	910	10,179	4	974	10,241	6	914	10,042	9	1,032
65 +	1,356	3	163	1,401	8	173	1,497	2	151	1,492	2	178	1,682	3	183
Unknown	21	0	1	26	0	0	19	0	0	17	0	0	11	0	0
Total	13,974	13	1,311	15,061	17	1,437	15,832	8	1,489	15,890	11	1,457	15,987	16	1,662

Note: Seatbelt Used includes shoulder belt only used, lap belt only used, both lap and shoulder belts used, and restraint failure.



## 5-Year Trend - Drivers in Crashes by Hazardous Action

Hazardous Action	2012		2013		2014		2015		2016	
	Total Drivers in Crashes	Drivers in Fatal Crashes	Total Drivers in Crashes	Drivers in Fatal Crashes	Total Drivers in Crashes	Drivers in Fatal Crashes	Total Drivers in Crashes	Drivers in Fatal Crashes	Total Drivers in Crashes	Drivers in Fatal Crashes
None	8,416	27	8,954	30	9,514	15	9,717	57	9,514	27
Speed too fast	1,263	3	1,638	13	1,619	7	1,428	27	1,502	12
Speed too slow	14	0	21	0	20	0	15	1	16	0
Failed to yield	1,249	5	1,311	4	1,443	3	1,484	3	1,533	3
Disregard traffic control	387	2	392	3	426	1	447	1	441	3
Drove wrong way	12	0	13	0	19	0	22	0	13	1
Drove left of center	80	4	74	5	90	1	85	0	92	3
Improper passing	72	1	87	0	78	1	75	0	99	1
Improper lane use	382	0	349	0	442	0	417	1	415	0
Improper turn	235	1	228	0	229	1	240	0	238	0
Improper/no signal	37	0	33	0	21	0	33	0	17	0
Improper backing	220	0	226	0	276	0	222	0	266	0
Unable to stop in assured clear distance	2,227	5	2,366	1	2,441	0	2,468	13	2,604	3
Other	569	4	618	0	675	2	701	1	683	3
Unknown	199	7	268	6	259	2	262	4	634	7
Reckless driving	83	2	76	4	71	1	82	2	101	4
Careless/negligent driving	373	4	371	2	393	1	399	9	422	2
Uncoded & errors	1	0	0	0	0	0	3	1	4	0
<b>Total</b>	<b>15,819</b>	<b>65</b>	<b>17,025</b>	<b>68</b>	<b>18,016</b>	<b>35</b>	<b>18,100</b>	<b>120</b>	<b>18,594</b>	<b>69</b>



The picture above represents all 2016 alcohol-involved fatal crashes in Post 51.

In 2016, there were 399 alcohol-involved crashes in Post 51:

8	K - Fatal Crashes
29	A - Suspected Serious Injury Crashes
50	B - Suspected Minor Injury Crashes
75	C - Possible Injury Crashes
237	O - Property Damage Only/No Injury Crashes

### Office of Highway Safety Planning

Physical Address:  
7150 Harris Drive  
Dimondale, Michigan 48821

Mailing Address:  
P.O. Box 30634  
Lansing, Michigan 48909

Phone: (517) 284-3112  
Fax: (517) 284-3151

Find us on the web:  
[MichiganTrafficCrashFacts.org](http://MichiganTrafficCrashFacts.org)

