

Michigan Traffic Crash Facts

Reporting Criteria

Please pay particular attention to the wording when interpreting the three levels of data gathered for this report.

Crash

The Crash Level analyzes data related to crash events and returns one result per crash.

Examples: Time, weather, and location.

Units

The Units Level analyzes the experience of the units in the crash and returns one result per vehicle, driver, pedestrian, bicyclist, or train.

Examples: Vehicle type, driver condition, and unit events.

People

The People Level analyzes the experience of the people involved in the crash and returns one result per occupant/person/party.

Examples: Age, injury severity, and seat belt or helmet use.

KABCO Injury Indicator:

K = Killed

A = Suspected Serious Injury

B = Suspected Minor Injury

C = Possible Injury

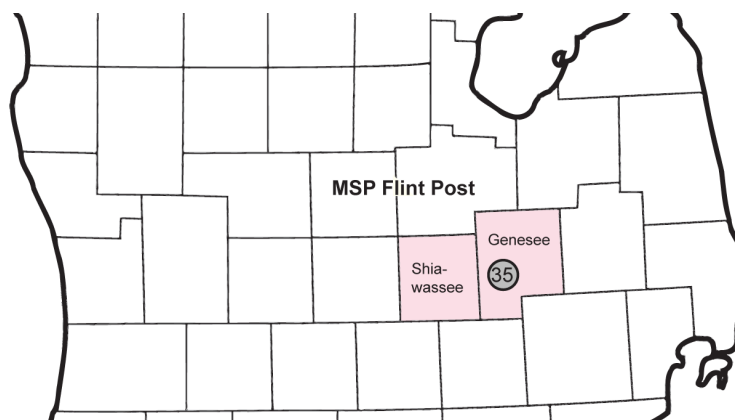
O = No Injury

Property Damage Only (PDO)

Michigan State Police (MSP) Post 35 - Flint

2016 Traffic Crash Data & 2012-2016 5-Year Trends

Post 35 is comprised of Genesee and Shiawassee counties. Trend tables for this report are based on those counties.



Sources:

The crashes in this report occurred on public roadways in Michigan and resulted in injuries, fatalities, or property damage (with \$1,000 as a reporting threshold). The information was gathered from Michigan Traffic Crash Report Forms (UD-10) submitted by local police departments, sheriff's offices, and the Michigan State Police. Other related information was obtained from the departments of Transportation, State, and Community Health.

This page left intentionally blank

MSP Post 35 - Flint

- There were 12,348 crashes in Post 35 during 2016. [Page 1]
- There were 64 fatalities in 62 fatal crashes in 2016 in Post 35. [Page 1]
- A total of 3,772 injuries resulted from 2,719 injury crashes. [Page 1]
- There were 9,567 property damage only crashes (no fatalities or injuries). [Page 1]
- December had the highest number of crashes (1,313). [Page 1-2]
- October had the highest number of fatal crashes (12) and fatalities (14). [Page 1]
- October had the highest number of injury crashes (255) and August had the highest number of injuries (366). [Page 1]
- December had the highest number of property damage only crashes (1,069). [Page 1]
- Of all vehicles involved in fatal crashes, 7 (7.7%) were motorcycles. [Page 1]
- Friday was the day of the week with the highest number of crashes (1,990) and Saturday had the highest number of fatal crashes (12). [Pages 2-3]
- The 3:00 PM – 5:59 PM time period had the highest number of crashes (2,665). This is true for each year from 2012 to 2016. The 9:00 PM – 11:59 PM time period also had the highest number of fatal crashes (12). [Pages 5-6]
- During the period from 2012 to 2016, the highest number of deer crashes occurred in 2013 (1,833). The 6:00 PM – 8:59 PM time period consistently had the highest number of deer-involved crashes during the five-year period. There were no fatal crashes involving deer in 2016. [Pages 7-8]
- Genesee County (85.2%) had the highest number of crashes in Post 35 in 2016, followed by Shiawassee County (14.8%). [Page 8]
- Genesee County (78.1%) had the highest number of fatalities in Post 35 in 2016, followed by Shiawassee County (21.9%). The occurrence of fatal crashes out of all crashes in Shiawassee County was about 1.5 that of Genesee County. [Page 8]
- The highest number of drivers in crashes (20,668) occurred during 2016 and the highest number of drivers coded drinking in crashes (461) occurred during 2013 within the five-year period. [Page 9]
- A total of 375 crashes involved alcohol in 2016, which was the lowest number during the five-year period, but 2013 had the highest number of alcohol-involved crashes, with 467. [Page 10]
- Alcohol-involved fatal crashes were the highest in 2016 during the five-year period from 2012 to 2016 at 19. [Page 10]
- A total of 131 crashes, 14 fatal crashes, and 15 suspected serious injury crashes involved drugs in 2016, all the highest during the five-year period. [Page 11]
- There were 18,064 drivers wearing seatbelts and 207 drivers not wearing seatbelts in crashes in 2016. Of the 207 drivers not wearing seat belts, 9 (4.3%) were killed and 71 (34.3%) were injured. [Pages 14-16]
- The most common hazardous action coded for drivers in 2016 in all crashes was unable to stop in assured clear distance (2,626), while the most common hazardous action coded for drivers in fatal crashes was unknown (10). [Page 17]

Post 35 Experience

In 2016:

There were 20,668 drivers involved in 12,348 motor vehicle crashes in MSP Post 35. Of those crashes, 62 were classified as fatal, resulting in 64 fatalities. An additional 3,772 persons were injured.

Post 35 experienced the highest number of motor vehicle crashes (1,313) in December, the highest number of fatal crashes (12) and the highest number of persons killed (14) in October.

Michigan driver statistics indicate 6.4 percent of licensed drivers in Post 35 were age 16-20, and 11.5 percent of drivers in crashes were also in that age group.

2016 - Crashes and Injuries by Month

Month	Crashes				Persons	
	Total	Fatal	Injury	Property Damage Only (PDO)	Fatalities	Injuries
January	1,171	3	222	946	3	290
February	1,156	3	211	942	3	283
March	940	4	202	734	4	284
April	959	2	205	752	2	302
May	868	4	217	647	4	304
June	858	5	234	619	5	320
July	861	5	215	641	5	302
August	889	6	253	630	6	366
September	978	6	234	738	6	335
October	1,105	12	255	838	14	365
November	1,250	4	235	1,011	4	313
December	1,313	8	236	1,069	8	308
Total	12,348	62	2,719	9,567	64	3,772

2016 - Driver Statistics

Age Group	Statewide			Driver Rates	
	2016 Population	Licensed Drivers	Drivers in Crashes	Per 10k Population	Per 10k Licensed
0 - 15	95,341	2,211	43	4.5	194.5
16 - 20	30,528	22,136	2,379	779.3	1,074.7
21 - 24	24,830	22,379	1,995	803.5	891.5
25 - 64	247,263	225,809	12,215	494.0	540.9
65 +	79,207	71,206	2,255	284.7	316.7
Unknown	0	0	1,781	--	--
Total	477,169	343,741	20,668	433.1	601.3

2016 - Vehicles in Crashes

Vehicle Type	Motor Vehicles		Fatal Crashes		Injury Crashes	PDO Crashes
	Number of Vehicles	% of Total	Number	% of Total	Number	Number
Passenger car, SUV, van	16,398	79.3	56	61.5	3,947	12,395
Motor home	287	1.4	2	2.2	57	228
Pickup truck	2,881	13.9	16	17.6	639	2,226
Small truck under 10,000 lbs. GVWR	152	0.7	0	0.0	27	125
Motorcycle	163	0.8	7	7.7	122	34
Moped / goped	14	0.1	1	1.1	13	0
Go-cart / golf cart	1	0.0	0	0.0	1	0
Snowmobile	1	0.0	0	0.0	1	0
Off-Road Vehicle - ORV / All-Terrain Vehicle - ATV	7	0.0	0	0.0	6	1
Other	90	0.4	2	2.2	15	73
Truck/bus over 10,000 lbs.	397	1.9	6	6.6	98	293
Unknown	277	1.3	1	1.1	25	251
Total	20,668	100.0	91	100.0	4,951	15,626

MSP Post 35 - Flint (continued)

5-Year Trend - Crashes by Month

Month	2012		2013		2014		2015		2016	
	Total Crashes	Fatal Crashes	Total Crashes	Fatal Crashes	Total Crashes	Fatal Crashes	Total Crashes	Fatal Crashes	Total Crashes	Fatal Crashes
January	1,204	1	1,190	4	1,640	2	1,359	3	1,171	3
February	1,015	2	1,020	2	1,078	3	1,079	0	1,156	3
March	783	6	820	1	1,029	3	846	1	940	4
April	781	4	783	2	749	0	773	3	959	2
May	914	2	893	3	882	3	962	2	868	4
June	868	7	874	0	866	5	949	5	858	5
July	758	6	784	2	717	5	763	3	861	5
August	785	2	740	2	789	3	807	1	889	6
September	804	5	855	4	815	3	887	8	978	6
October	1,052	3	1,077	5	1,143	1	1,174	5	1,105	12
November	1,035	2	1,236	4	1,402	2	1,381	2	1,250	4
December	1,170	2	1,437	3	998	3	1,152	3	1,313	8
Total	11,169	42	11,709	32	12,108	33	12,132	36	12,348	62

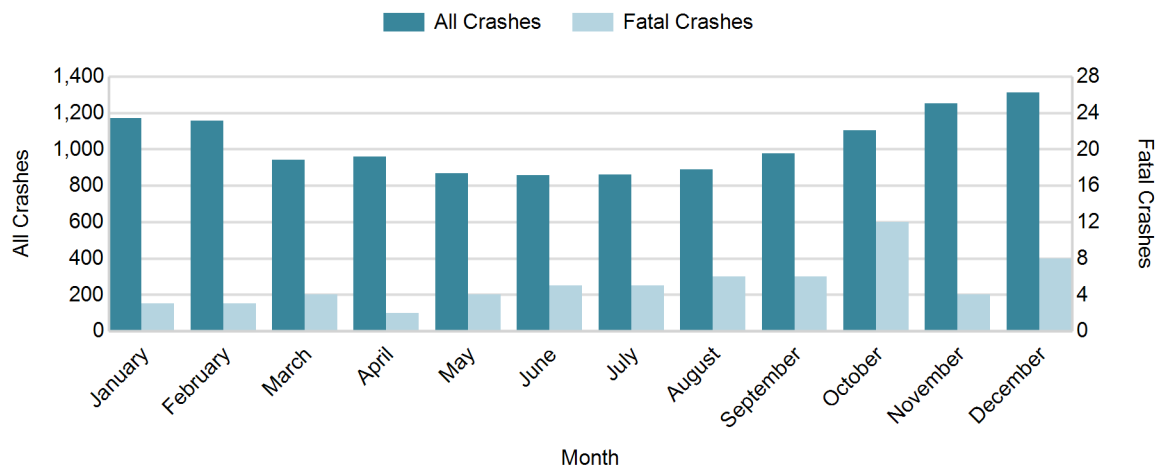
Note: † Indicates that the highest number of total crashes reported in the 5-year period occurred in the same month

5-Year Trend - Crashes by Day of Week

Day	2012		2013		2014		2015		2016	
	Total Crashes	Fatal Crashes	Total Crashes	Fatal Crashes	Total Crashes	Fatal Crashes	Total Crashes	Fatal Crashes	Total Crashes	Fatal Crashes
Monday	1,552	5	1,717	6	1,642	1	1,713	6	1,736	6
Tuesday	1,518	2	1,686	1	1,901	4	1,856	4	1,888	6
Wednesday	1,493	2	1,788	4	1,915	4	1,803	3	1,961	10
Thursday	1,601	6	1,870	6	2,221	5	1,818	2	1,821	8
Friday	2,202	9	1,846	5	1,872	2	1,969	9	1,990	10
Saturday	1,505	10	1,550	8	1,364	10	1,733	8	1,589	12
Sunday	1,298	8	1,252	2	1,193	7	1,240	4	1,363	10
Total	11,169	42	11,709	32	12,108	33	12,132	36	12,348	62

Note: † Indicates that the highest number of total crashes reported in the 5-year period occurred on the same day of the week

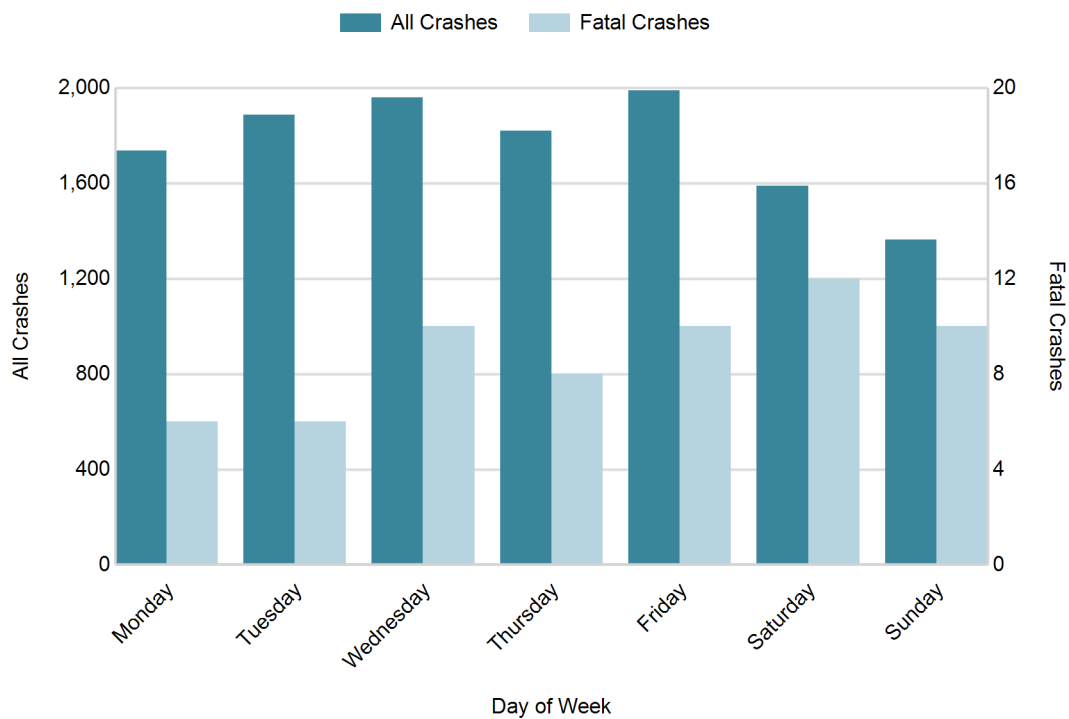
2016 Crashes by Month



2016 - Crashes by Day of Week

Day	All Crashes		Fatal Crashes		Injury Crashes			PDO Crashes
	Number	% of Total	Number	% of Fatal	A	B	C	Number
Monday	1,736	14.1	6	9.7	24	88	265	1,353
Tuesday	1,888	15.3	6	9.7	27	101	266	1,488
Wednesday	1,961	15.9	10	16.1	22	85	334	1,510
Thursday	1,821	14.7	8	12.9	29	114	286	1,384
Friday	1,990	16.1	10	16.1	26	103	313	1,538
Saturday	1,589	12.9	12	19.4	29	85	252	1,211
Sunday	1,363	11.0	10	16.1	19	70	181	1,083
Total	12,348	100.0	62	100.0	176	646	1,897	9,567

2016 Day of Week and Severity

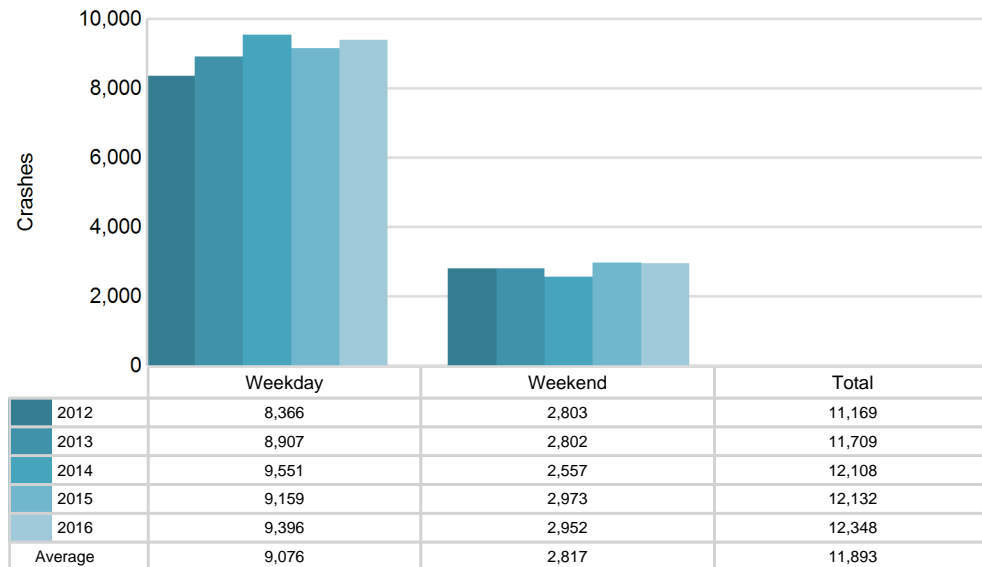


MSP Post 35 - Flint (continued)

5-Year Trend - Crashes by Weekday and Weekend

Portion of Week	2012		2013		2014		2015		2016	
	Total Crashes	Fatal Crashes	Total Crashes	Fatal Crashes	Total Crashes	Fatal Crashes	Total Crashes	Fatal Crashes	Total Crashes	Fatal Crashes
Weekday	8,366	24	8,907	22	9,551	16	9,159	24	9,396	40
Weekend	2,803	18	2,802	10	2,557	17	2,973	12	2,952	22
Total	11,169	42	11,709	32	12,108	33	12,132	36	12,348	62

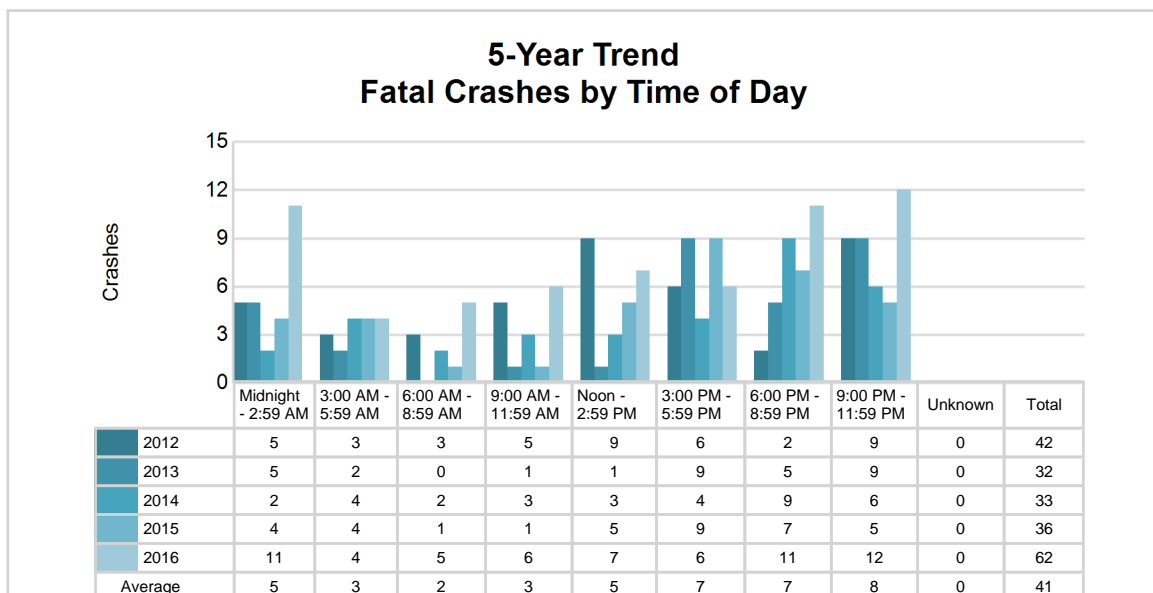
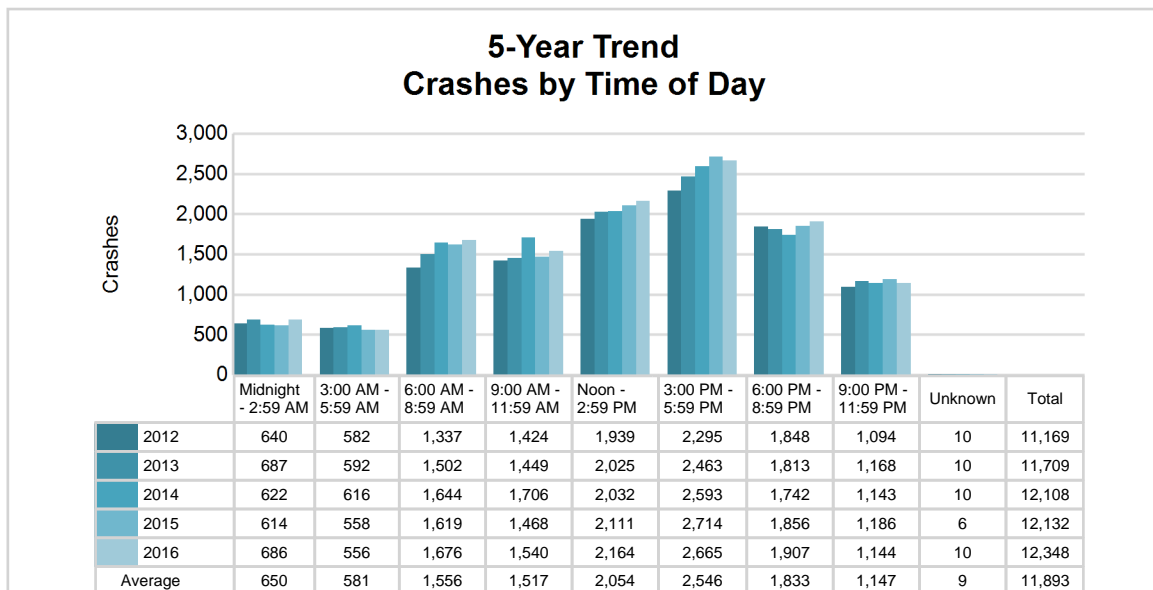
5-Year Crash Trends by Weekday (Monday - Friday) and Weekend (Saturday & Sunday)



5-Year Trend - Crashes by Time of Day

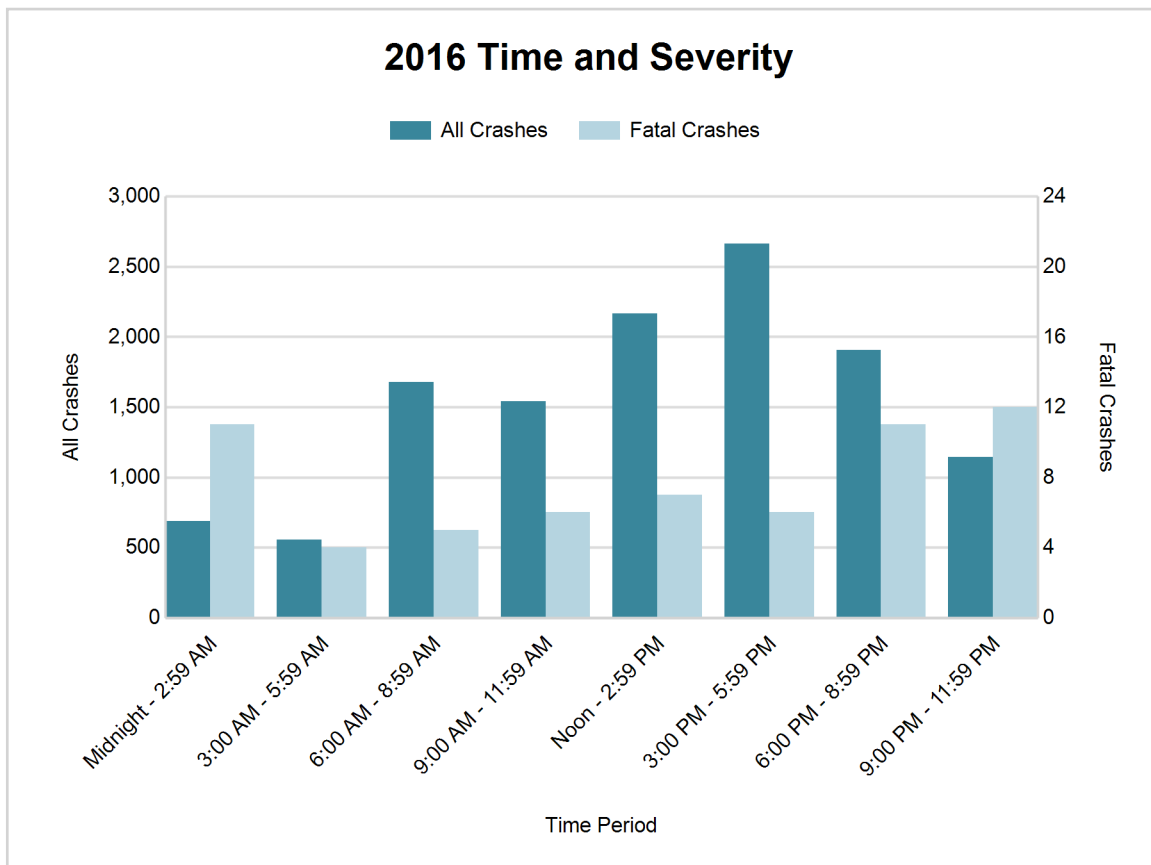
Time of Day	2012		2013		2014		2015		2016	
	Total Crashes	Fatal Crashes	Total Crashes	Fatal Crashes	Total Crashes	Fatal Crashes	Total Crashes	Fatal Crashes	Total Crashes	Fatal Crashes
Midnight - 2:59 AM	640	5	687	5	622	2	614	4	686	11
3:00 AM - 5:59 AM	582	3	592	2	616	4	558	4	556	4
6:00 AM - 8:59 AM	1,337	3	1,502	0	1,644	2	1,619	1	1,676	5
9:00 AM - 11:59 AM	1,424	5	1,449	1	1,706	3	1,468	1	1,540	6
Noon - 2:59 PM	1,939	9	2,025	1	2,032	3	2,111	5	2,164	7
3:00 PM - 5:59 PM	2,295 †	6	2,463 †	9	2,593 †	4	2,714 †	9	2,665 †	6
6:00 PM - 8:59 PM	1,848	2	1,813	5	1,742	9	1,856	7	1,907	11
9:00 PM - 11:59 PM	1,094	9	1,168	9	1,143	6	1,186	5	1,144	12
Unknown	10	0	10	0	10	0	6	0	10	0
Total	11,169	42	11,709	32	12,108	33	12,132	36	12,348	62

Note: † Indicates that the highest number of total crashes reported in the 5-year period occurred in the same time period



2016 - Time and Severity

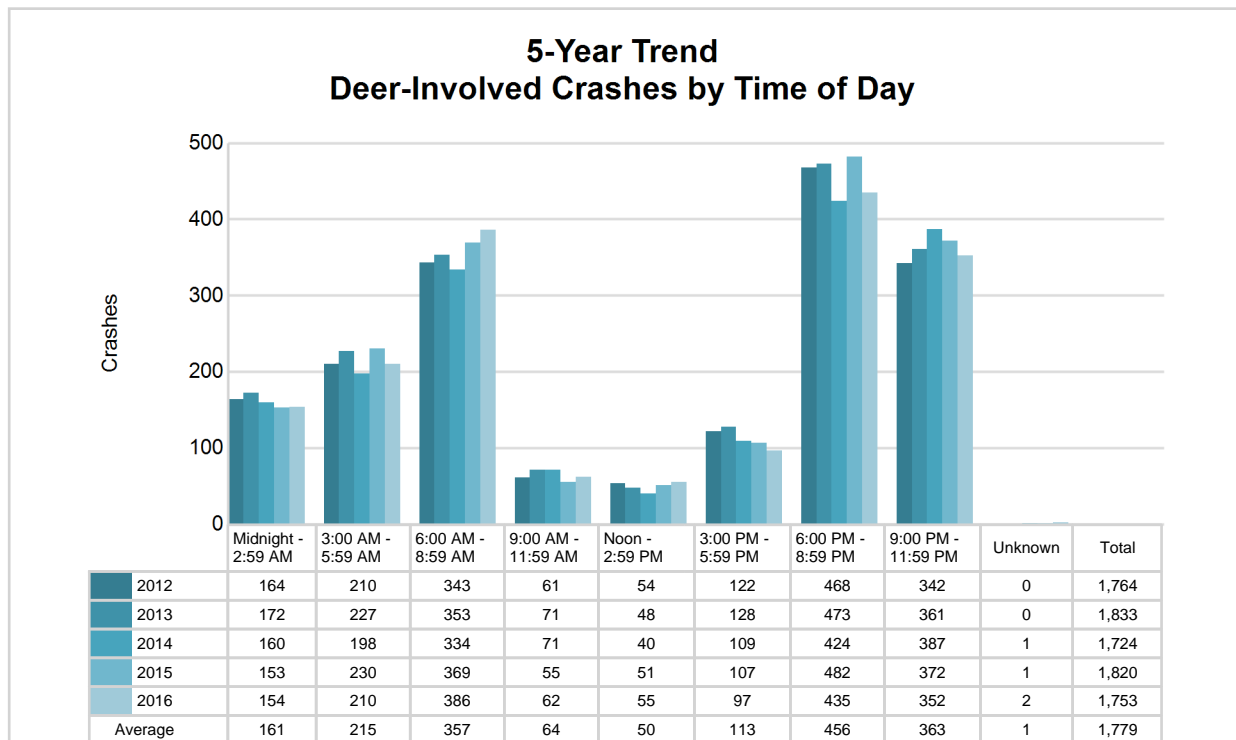
Time of Day	All Crashes		Fatal Crashes		Injury Crashes			PDO Crashes
	Number	% of Total	Number	% of Fatal	A	B	C	Number
Midnight - 2:59 AM	686	5.6	11	17.7	19	35	86	535
3:00 AM - 5:59 AM	556	4.5	4	6.5	10	23	62	457
6:00 AM - 8:59 AM	1,676	13.6	5	8.1	19	75	194	1,383
9:00 AM - 11:59 AM	1,540	12.5	6	9.7	22	94	303	1,115
Noon - 2:59 PM	2,164	17.5	7	11.3	31	123	380	1,623
3:00 PM - 5:59 PM	2,665	21.6	6	9.7	32	144	469	2,014
6:00 PM - 8:59 PM	1,907	15.4	11	17.7	24	81	271	1,520
9:00 PM - 11:59 PM	1,144	9.3	12	19.4	19	69	132	912
Unknown	10	0.1	0	0.0	0	2	0	8
Total	12,348	100.0	62	100.0	176	646	1,897	9,567

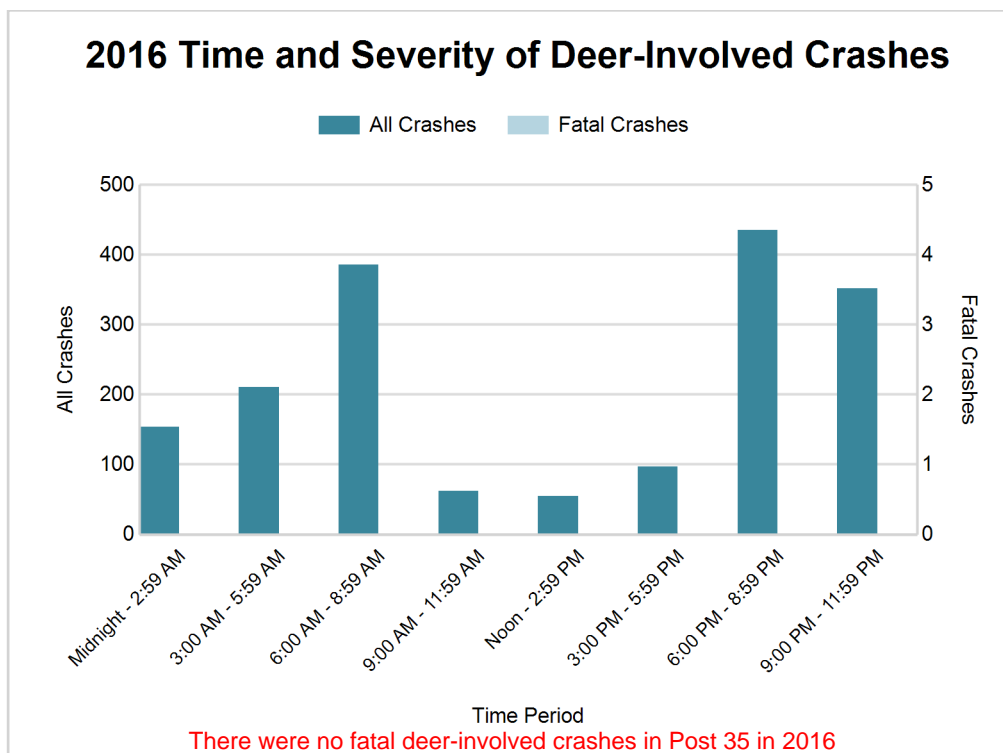


5-Year Trend - Deer-Involved Crashes by Time of Day

Time of Day	2012		2013		2014		2015		2016	
	Total Crashes	Fatal Crashes	Total Crashes	Fatal Crashes	Total Crashes	Fatal Crashes	Total Crashes	Fatal Crashes	Total Crashes	Fatal Crashes
Midnight - 2:59 AM	164	1	172	0	160	0	153	0	154	0
3:00 AM - 5:59 AM	210	0	227	0	198	0	230	0	210	0
6:00 AM - 8:59 AM	343	0	353	0	334	0	369	0	386	0
9:00 AM - 11:59 AM	61	0	71	0	71	0	55	0	62	0
Noon - 2:59 PM	54	0	48	0	40	0	51	0	55	0
3:00 PM - 5:59 PM	122	1	128	0	109	0	107	0	97	0
6:00 PM - 8:59 PM	468 †	0	473 †	0	424 †	0	482 †	0	435 †	0
9:00 PM - 11:59 PM	342	0	361	0	387	0	372	0	352	0
Unknown	0	0	0	0	1	0	1	0	2	0
Total	1,764	2	1,833	0	1,724	0	1,820	0	1,753	0

Note: † Indicates that the highest number of total crashes reported in the 5-year period occurred in the same time period





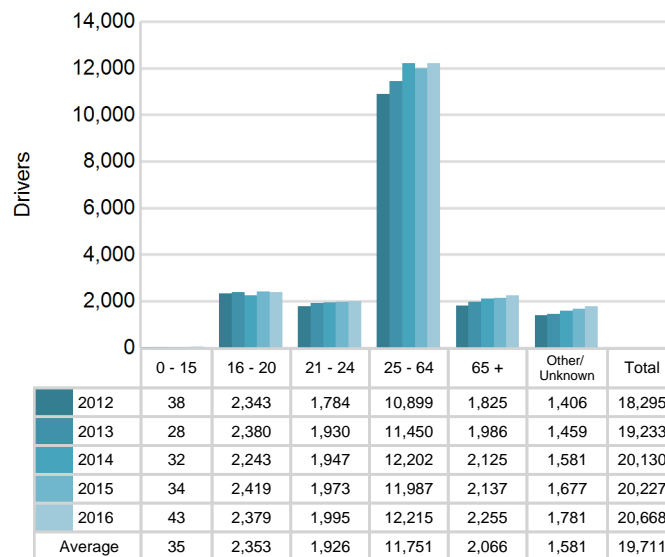
2016 - Reported Motor Vehicle Crashes by County

County	Crashes											Persons	
	Total	Fatal	Injury	Property Damage	Inter-state	US Route	State Route	Local Street	Alcohol-Involved	Drug-Involved	Deer-Involved	Fatalities	Injuries
Genesee	10,521	49	2,424	8,048	1,805	382	1,480	6,808	304	112	1,000	50	3,361
Shiawassee	1,827	13	295	1,519	224	0	532	1,069	71	19	753	14	411
Total	12,348	62	2,719	9,567	2,029	382	2,012	7,877	375	131	1,753	64	3,772

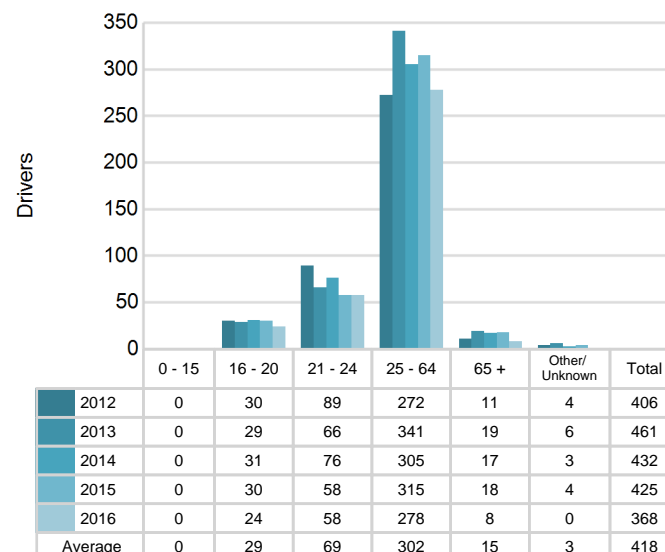
5-Year Trend - Drivers in Crashes Coded Drinking by Driver Age

Driver Age	2012		2013		2014		2015		2016	
	Total Drivers in Crashes	Total Drivers Coded Drinking	Total Drivers in Crashes	Total Drivers Coded Drinking	Total Drivers in Crashes	Total Drivers Coded Drinking	Total Drivers in Crashes	Total Drivers Coded Drinking	Total Drivers in Crashes	Total Drivers Coded Drinking
0 - 15	38	0	28	0	32	0	34	0	43	0
16 - 20	2,343	30	2,380	29	2,243	31	2,419	30	2,379	24
21 - 24	1,784	89	1,930	66	1,947	76	1,973	58	1,995	58
25 - 64	10,899	272	11,450	341	12,202	305	11,987	315	12,215	278
65 +	1,825	11	1,986	19	2,125	17	2,137	18	2,255	8
Unknown	1,406	4	1,459	6	1,581	3	1,677	4	1,781	0
Total	18,295	406	19,233	461	20,130	432	20,227	425	20,668	368

5-Year Trend Total Drivers in Crashes by Age



5-Year Trend Total Drivers Coded Drinking by Age



2016 - Bodily Alcohol Concentration (BAC) Results Among All Vehicle Drivers in Alcohol-Involved Crashes by Age

Age Group	Drivers				BAC Result Range for Drivers Coded Drinking				
	Total Drivers in Alcohol-Involved Crashes	Total Drivers Tested in all Crashes	Total Drivers Coded Drinking, Tested	Total Drivers Coded Drinking	BAC = 0.00	BAC 0.01 g/dL to 0.07 g/dL	BAC 0.08 g/dL to 0.16 g/dL	BAC 0.17 g/dL and Above	BAC Not Reported
0 - 15	0	0	0	0	0	0	0	0	0
16 - 20	37	35	18	24	0	3	7	5	9
21 - 24	73	62	45	58	1	5	12	16	24
25 - 64	374	278	213	278	5	14	51	67	141
65 +	28	11	5	8	0	0	2	1	5
Unknown	29	1	0	0	0	0	0	0	0
Total	541	387	281	368	6	22	72	89	179

Notes: BAC measured in grams (g) per deciliter (dL).

BAC may not be reported if drivers are not tested or if the results are not available immediately (as in the case of a blood test).

A driver may be coded by the officer as drinking even though no test is administered.

Alcohol-Involved Crashes

In 2016, there were 541 drivers in alcohol-involved crashes; 368 (68.0%) of those drivers were coded as had-been-drinking by the officer on the crash form.

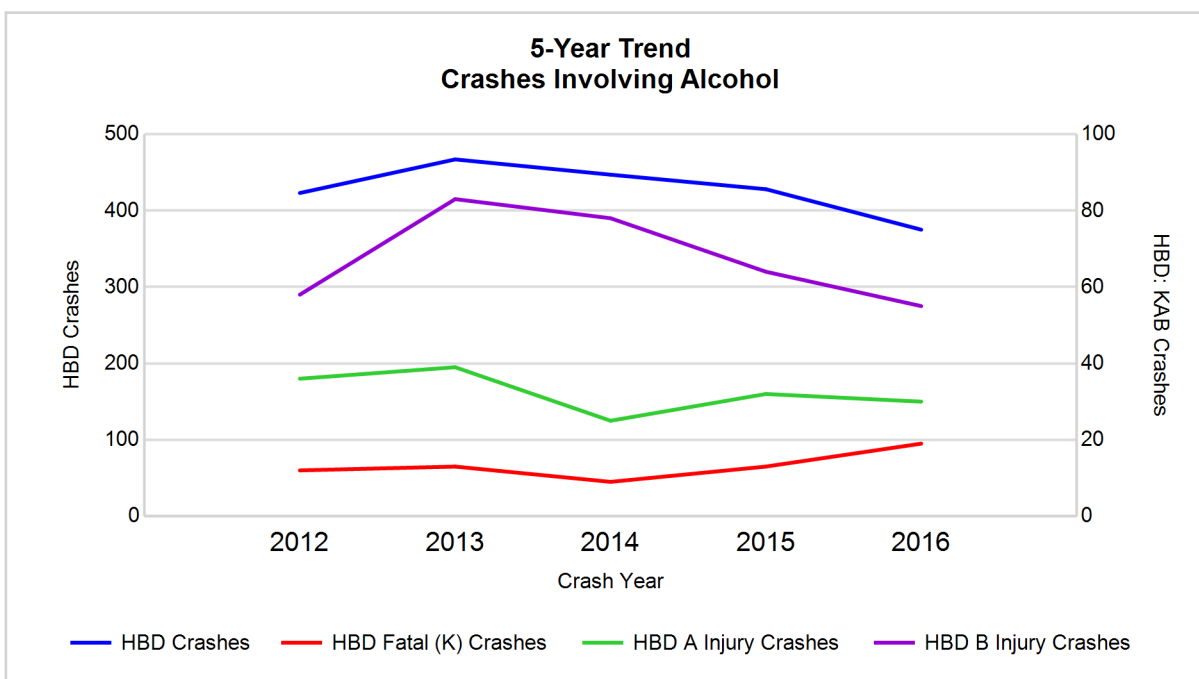
- 161 (43.8%) of the 368 drivers had a blood alcohol concentration (BAC) of 0.08 g/dL (grams per deciliter) or greater, and 89 (55.3%) of the 161 drivers had a BAC at or above 0.17 g/dL.
- 281 (76.4%) of the 368 drivers were coded as had-been-drinking and were tested for alcohol consumption.

5-Year Trend - Crashes Involving Alcohol

Year	All Crashes	HBD Crashes	% HBD	Fatal Crashes	HBD Fatal Crashes	% HBD	A Injury Crashes	HBD A Injury Crashes	% HBD	B Injury Crashes	HBD B Injury Crashes	% HBD
2012	11,169	423	3.8	42	12	28.6	145	36	24.8	561	58	10.3
2013	11,709	467	4.0	32	13	40.6	177	39	22.0	556	83	14.9
2014	12,108	447	3.7	33	9	27.3	132	25	18.9	525	78	14.9
2015	12,132	428	3.5	36	13	36.1	145	32	22.1	573	64	11.2
2016	12,348**	375*	3.0*	62**	19**	30.6	176	30	17.0*	646**	55*	8.5*

Note: * Indicates that the most recent year is the lowest number or percentage reported in the 5-year period in that column

** Indicates that the most recent year is the highest number or percentage reported in the 5-year period in that column

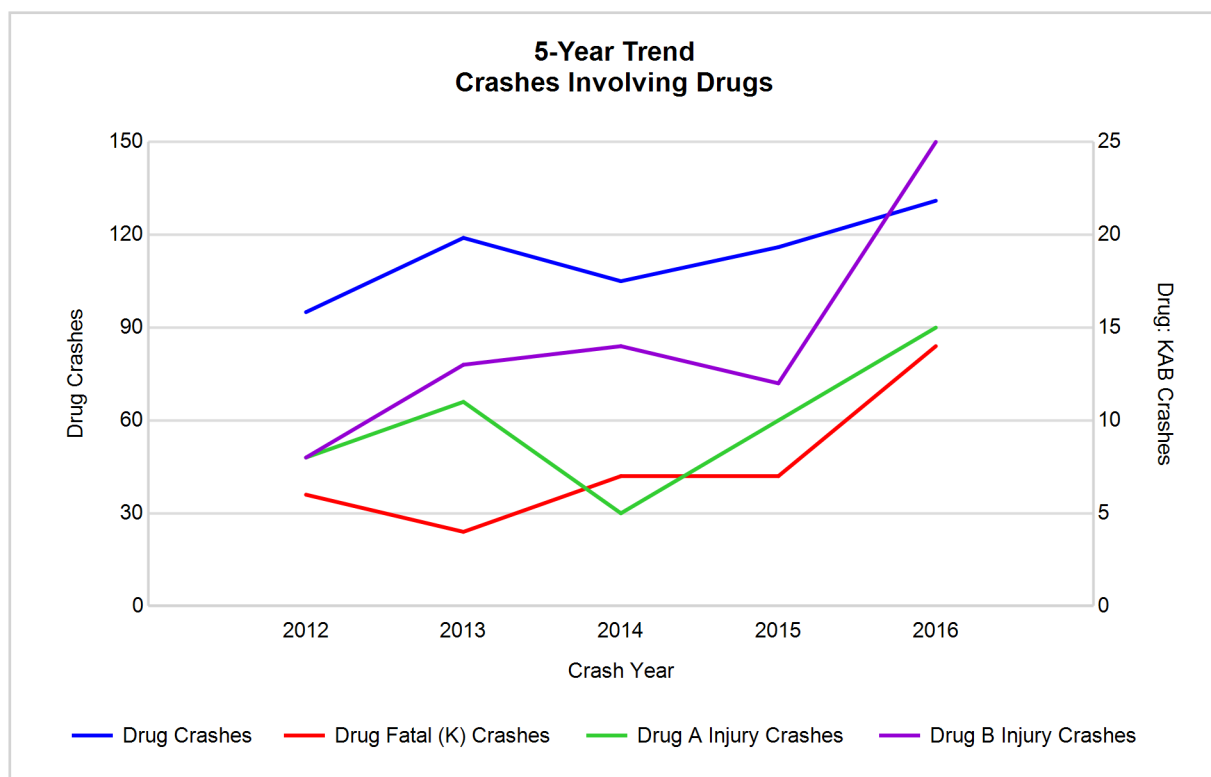


Note: Had-Been-Drinking (HBD)

5-Year Trend - Crashes Involving Drugs

Year	All Crashes	Drug Crashes	% Drug	Fatal Crashes	Drug Fatal Crashes	% Drug	A Injury Crashes	Drug A Injury Crashes	% Drug	B Injury Crashes	Drug B Injury Crashes	% Drug
2012	11,169	95	0.9	42	6	14.3	145	8	5.5	561	8	1.4
2013	11,709	119	1.0	32	4	12.5	177	11	6.2	556	13	2.3
2014	12,108	105	0.9	33	7	21.2	132	5	3.8	525	14	2.7
2015	12,132	116	1.0	36	7	19.4	145	10	6.9	573	12	2.1
2016	12,348**	131**	1.1**	62**	14**	22.6**	176	15**	8.5**	646**	25**	3.9**

Note: * Indicates that the most recent year is the lowest number or percentage reported in the 5-year period in that column
 ** Indicates that the most recent year is the highest number or percentage reported in the 5-year period in that column

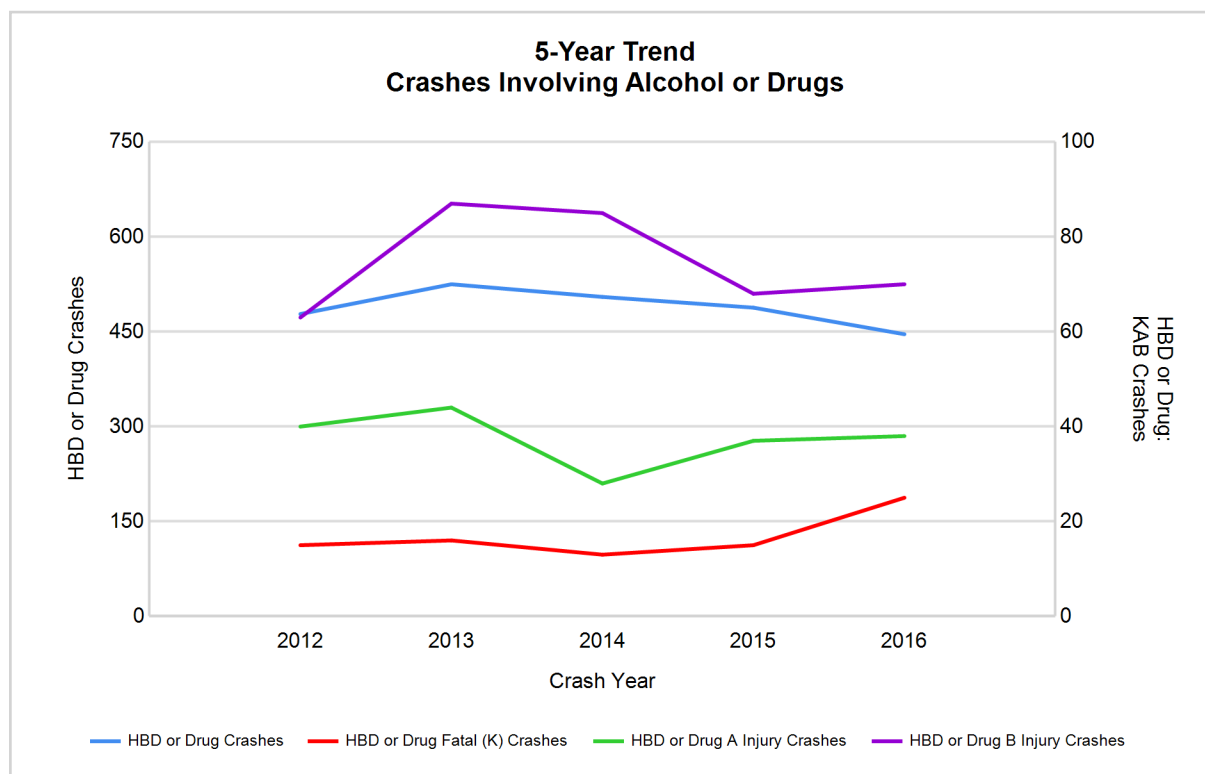


5-Year Trend - Crashes Involving Alcohol or Drugs

Year	All Crashes	HBD or Drug Crashes	% HBD or Drug	Fatal Crashes	HBD or Drug Fatal Crashes	% HBD or Drug	A Injury Crashes	HBD or Drug A Injury Crashes	% HBD or Drug	B Injury Crashes	HBD or Drug B Injury Crashes	% HBD or Drug
2012	11,169	478	4.3	42	15	35.7	145	40	27.6	561	63	11.2
2013	11,709	525	4.5	32	16	50.0	177	44	24.9	556	87	15.6
2014	12,108	505	4.2	33	13	39.4	132	28	21.2	525	85	16.2
2015	12,132	488	4.0	36	15	41.7	145	37	25.5	573	68	11.9
2016	12,348**	446*	3.6*	62**	25**	40.3	176	38	21.6	646**	70	10.8*

Note: * Indicates that the most recent year is the lowest number or percentage reported in the 5-year period in that column

** Indicates that the most recent year is the highest number or percentage reported in the 5-year period in that column



Note: Had-Been-Drinking (HBD)

MSP Post 35 - Flint (continued)

13

2016 - Restraints Worn Among Vehicle Drivers and Injured Passengers by Vehicle Type

Vehicle Type	Total Occupants			Fatalities			A - Suspected Serious			B - Suspected Minor			C - Possible Injury			No Injury		
	Total	Used Restraint	%	Total	Used Restraint	%	Total	Used Restraint	%	Total	Used Restraint	%	Total	Used Restraint	%	Total	Used Restraint	%
Passenger car, SUV, van	17,210	15,403	89.5	29	15	51.7	141	102	72.3	588	523	88.9	2,307	2,179	94.5	12,994	12,568	96.7
Motor home	304	268	88.2	2	1	50.0	2	2	100.0	6	4	66.7	35	34	97.1	235	227	96.6
Pickup truck	2,967	2,621	88.3	7	3	42.9	30	20	66.7	98	83	84.7	251	233	92.8	2,348	2,279	97.1
Small truck under 10,000 lbs. GVWR	155	142	91.6	0	0	0.0	0	0	0.0	3	3	100.0	10	10	100.0	131	129	98.5
Motorcycle	179	109	60.9	6	2	33.3	28	14	50.0	58	35	60.3	45	32	71.1	39	26	66.7
Moped / goped	14	3	21.4	1	0	0.0	2	0	0.0	9	2	22.2	2	1	50.0	0	0	0.0
Go-cart / golf cart	2	0	0.0	0	0	0.0	0	0	0.0	1	0	0.0	0	0	0.0	1	0	0.0
Snowmobile	2	2	100.0	0	0	0.0	0	0	0.0	0	0	0.0	2	2	100.0	0	0	0.0
Off-Road Vehicle - ORV / All-Terrain Vehicle - ATV	8	2	25.0	0	0	0.0	1	0	0.0	3	1	33.3	2	0	0.0	2	1	50.0
Other	92	55	59.8	1	0	0.0	0	0	0.0	1	1	100.0	6	4	66.7	64	50	78.1
Truck/bus over 10,000 lbs.	414	374	90.3	0	0	0.0	2	1	50.0	6	6	100.0	28	15	53.6	361	351	97.2
Unknown	277	2	0.7	0	0	0.0	0	0	0.0	0	0	0.0	0	0	0.0	4	2	50.0
Total	21,624	18,981	87.8	46	21	45.7	206	139	67.5	773	658	85.1	2,688	2,510	93.4	16,179	15,633	96.6

Note: Restraint Use includes shoulder belt only used, lap belt only used, both lap and shoulder belts used, child restraint used, restraint failure, and helmet worn.

2016 - Restraints Worn Among Vehicle Drivers and Injured Passengers by Age

Age Group	Total Occupants			Fatalities			A - Suspected Serious			B - Suspected Minor			C - Possible Injury			No Injury		
	Total	Used Restraint	%	Total	Used Restraint	%	Total	Used Restraint	%	Total	Used Restraint	%	Total	Used Restraint	%	Total	Used Restraint	%
0 - 15	269	223	82.9	3	1	33.3	11	4	36.4	44	37	84.1	173	149	86.1	36	31	86.1
16 - 20	2,517	2,400	95.4	2	0	0.0	26	17	65.4	114	89	78.1	310	292	94.2	2,060	1,999	97.0
21 - 24	2,071	1,968	95.0	5	3	60.0	24	14	58.3	88	74	84.1	249	230	92.4	1,699	1,646	96.9
25 - 64	12,617	12,063	95.6	31	14	45.2	115	76	66.1	412	348	84.5	1,623	1,515	93.3	10,405	10,105	97.1
65 +	2,365	2,307	97.5	5	3	60.0	29	28	96.6	113	109	96.5	331	322	97.3	1,876	1,844	98.3
Unknown	1,785	20	1.1	0	0	0.0	1	0	0.0	2	1	50.0	2	2	100.0	103	8	7.8
Total	21,624	18,981	87.8	46	21	45.7	206	139	67.5	773	658	85.1	2,688	2,510	93.4	16,179	15,633	96.6

Note: Restraint Use includes shoulder belt only used, lap belt only used, both lap and shoulder belts used, child restraint used, restraint failure, and helmet worn.

5-Year Trend - Restraint Use Among Drivers

Restraint Use	2012			2013			2014			2015			2016		
	Drivers	Fatal Drivers	Injured Drivers	Drivers	Fatal Drivers	Injured Drivers	Drivers	Fatal Drivers	Injured Drivers	Drivers	Fatal Drivers	Injured Drivers	Drivers	Fatal Drivers	Injured Drivers
No belts available	163	0	35	141	0	32	170	2	27	112	0	22	60	1	8
Shoulder belt only used	64	0	30	100	1	8	46	0	4	16	0	1	54	0	9
Lap belt only used	38	0	4	55	0	6	45	0	4	73	0	5	75	1	6
Both lap & shoulder belts used	15,852	9	2,080	16,815	4	2,184	17,610	12	2,130	17,656	11	2,219	17,928	16	2,415
No belts used	160	9	68	129	4	67	144	7	55	175	6	85	147	8	63
Child restraint used	1	0	0	1	0	0	0	0	0	1	0	0	7	0	0
Child restraint not used, unavailable or improper use	3	0	1	0	0	0	1	0	0	1	0	0	0	0	0
Restraint failure	5	0	0	9	0	4	12	0	3	9	0	0	7	0	0
Restraint use unknown	864	2	116	856	5	98	975	2	73	994	1	74	1,764	5	84
Helmet worn	116	4	78	85	1	56	77	1	54	90	1	65	108	2	77
Helmet not worn	58	3	47	46	2	37	59	1	45	58	5	43	68	5	48
Helmet use unknown	13	1	7	9	0	3	6	2	2	21	1	6	17	0	9
Uncoded & errors	958	0	7	987	0	6	985	0	1	1,021	0	4	433	0	0
Total	18,295	28	2,473	19,233	17	2,501	20,130	27	2,398	20,227	25	2,524	20,668	38	2,719

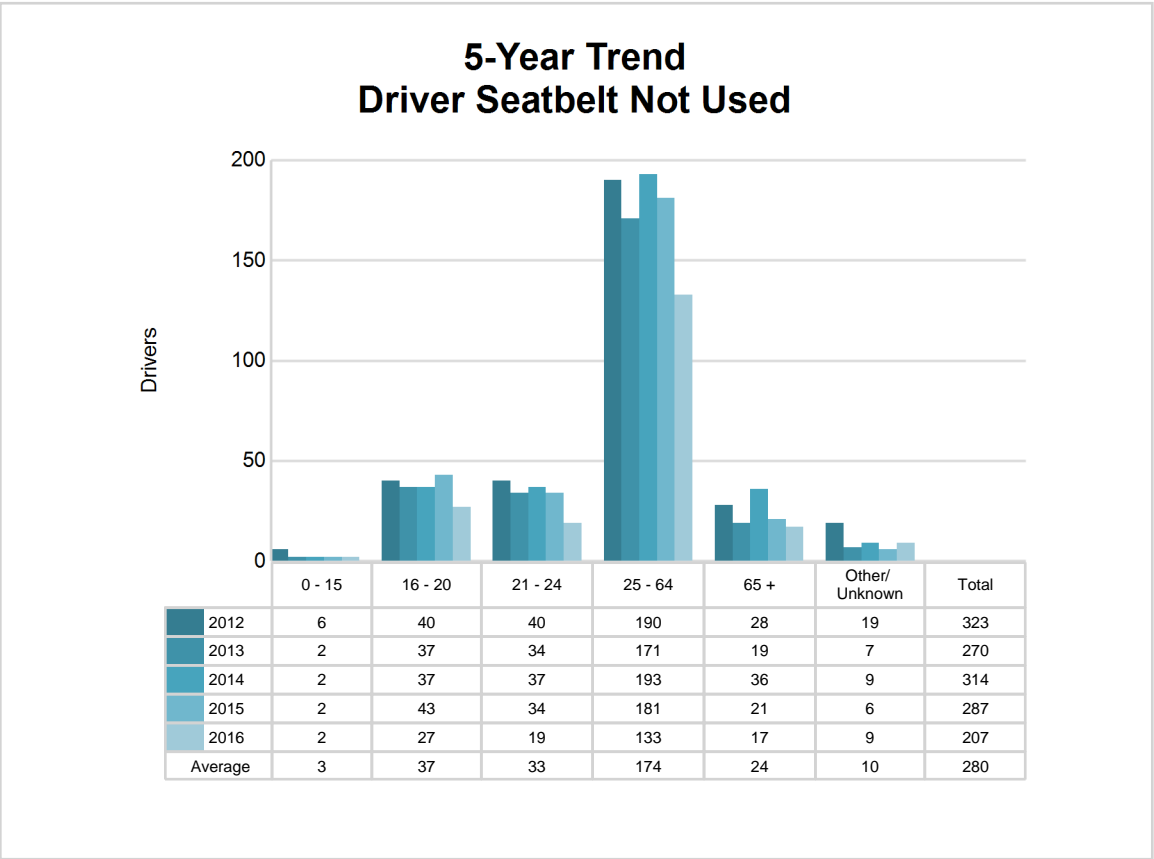
5-Year Trend - Restraint Use Among Drivers Coded Drinking

Restraint Use	2012			2013			2014			2015			2016		
	Drivers	Fatal Drivers	Injured Drivers	Drivers	Fatal Drivers	Injured Drivers	Drivers	Fatal Drivers	Injured Drivers	Drivers	Fatal Drivers	Injured Drivers	Drivers	Fatal Drivers	Injured Drivers
No belts available	6	0	4	6	0	3	5	0	2	3	0	3	0	0	0
Shoulder belt only used	0	0	0	8	0	1	0	0	0	0	0	0	1	0	0
Lap belt only used	2	0	2	1	0	0	1	0	1	3	0	1	2	0	0
Both lap & shoulder belts used	298	1	78	324	0	109	305	1	92	303	3	90	272	3	82
No belts used	26	1	18	26	2	18	31	2	13	41	3	27	30	3	16
Child restraint used	0	0	0	0	0	0	0	0	0	0	0	0	0	0	0
Child restraint not used, unavailable or improper use	0	0	0	0	0	0	0	0	0	0	0	0	0	0	0
Restraint failure	0	0	0	0	0	0	0	0	0	1	0	0	1	0	0
Restraint use unknown	55	1	22	83	2	24	75	1	22	53	0	18	53	3	14
Helmet worn	7	1	5	6	1	5	2	0	1	5	0	4	2	0	1
Helmet not worn	8	1	6	5	0	5	11	0	9	12	2	10	7	2	5
Helmet use unknown	1	0	1	1	0	1	0	0	0	1	0	1	0	0	0
Uncoded & errors	3	0	0	1	0	0	2	0	0	3	0	1	0	0	0
Total	406	5	136	461	5	166	432	4	140	425	8	155	368	11	118

5-Year Trend - Seatbelt Not Used Among Drivers by Age

Age Group	2012			2013			2014			2015			2016		
	Drivers	Fatal Drivers	Injured Drivers	Drivers	Fatal Drivers	Injured Drivers	Drivers	Fatal Drivers	Injured Drivers	Drivers	Fatal Drivers	Injured Drivers	Drivers	Fatal Drivers	Injured Drivers
0 - 15	6	0	2	2	0	0	2	0	1	2	0	2	2	0	0
16 - 20	40	1	17	37	0	16	37	1	12	43	1	16	27	1	11
21 - 24	40	0	17	34	0	10	37	0	12	34	0	15	19	0	8
25 - 64	190	6	61	171	4	68	193	5	52	181	3	67	133	6	50
65 +	28	2	4	19	0	5	36	3	5	21	2	5	17	2	2
Unknown	19	0	2	7	0	0	9	0	0	6	0	2	9	0	0
Total	323	9	103	270	4	99	314	9	82	287	6	107	207	9	71

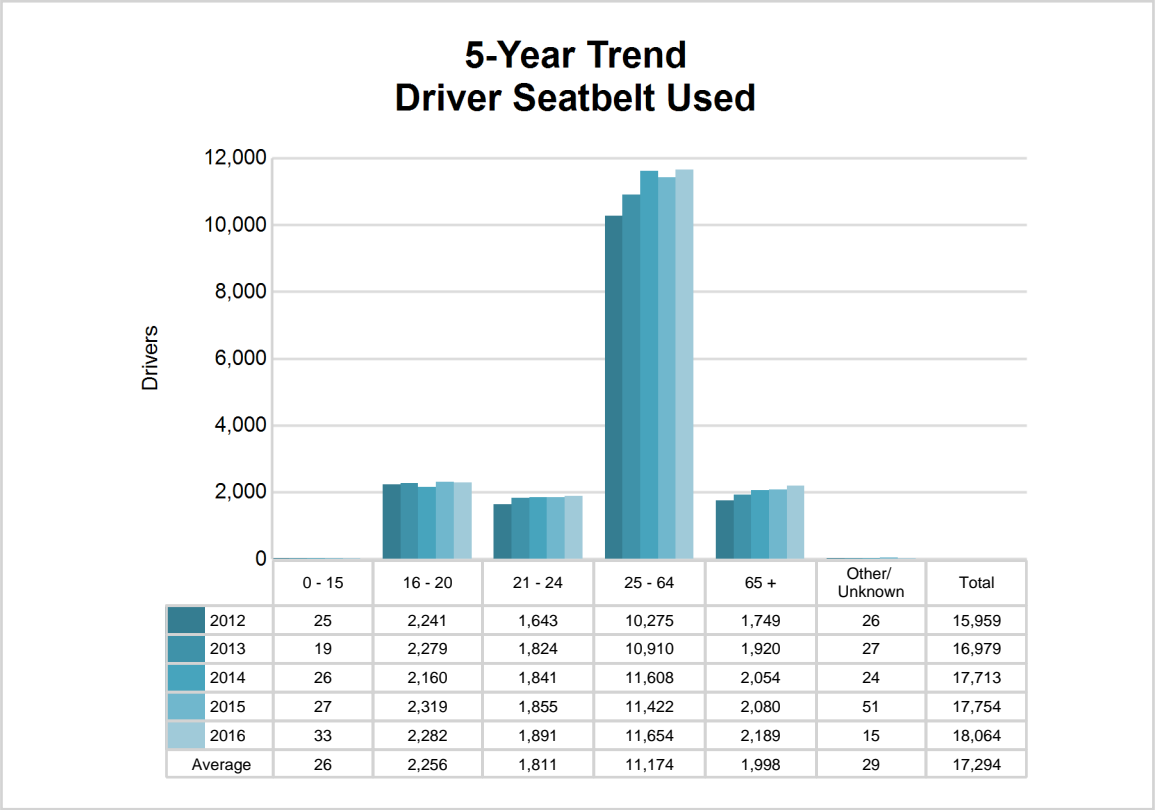
Note: Seatbelt Not Used includes no belts available or no belts used.



5-Year Trend - Seatbelt Used Among Drivers by Age

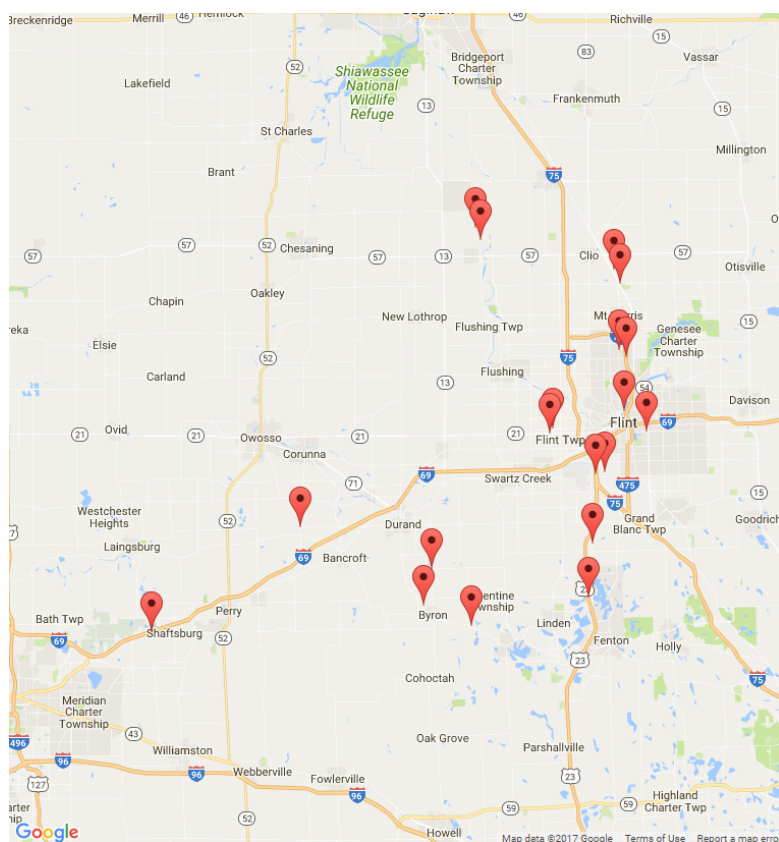
Age Group	2012			2013			2014			2015			2016		
	Drivers	Fatal Drivers	Injured Drivers	Drivers	Fatal Drivers	Injured Drivers	Drivers	Fatal Drivers	Injured Drivers	Drivers	Fatal Drivers	Injured Drivers	Drivers	Fatal Drivers	Injured Drivers
0 - 15	25	0	5	19	0	3	26	0	2	27	0	4	33	0	1
16 - 20	2,241	0	251	2,279	0	295	2,160	0	256	2,319	2	298	2,282	0	284
21 - 24	1,643	3	223	1,824	0	247	1,841	1	214	1,855	0	229	1,891	2	247
25 - 64	10,275	4	1,383	10,910	4	1,388	11,608	7	1,400	11,422	8	1,407	11,654	12	1,554
65 +	1,749	2	252	1,920	1	268	2,054	4	269	2,080	1	287	2,189	3	344
Unknown	26	0	0	27	0	1	24	0	0	51	0	0	15	0	0
Total	15,959	9	2,114	16,979	5	2,202	17,713	12	2,141	17,754	11	2,225	18,064	17	2,430

Note: Seatbelt Used includes shoulder belt only used, lap belt only used, both lap and shoulder belts used, and restraint failure.



5-Year Trend - Drivers in Crashes by Hazardous Action

Hazardous Action	2012		2013		2014		2015		2016	
	Total Drivers in Crashes	Drivers in Fatal Crashes	Total Drivers in Crashes	Drivers in Fatal Crashes	Total Drivers in Crashes	Drivers in Fatal Crashes	Total Drivers in Crashes	Drivers in Fatal Crashes	Total Drivers in Crashes	Drivers in Fatal Crashes
None	9,277	23	9,769	20	10,147	30	10,422	28	10,461	38
Speed too fast	1,345	9	1,571	3	1,783	5	1,419	9	1,463	9
Speed too slow	21	0	19	0	11	0	17	1	15	0
Failed to yield	1,745	3	1,872	3	1,774	2	1,919	6	2,002	6
Disregard traffic control	607	4	578	1	621	3	667	4	613	3
Drove wrong way	19	0	12	1	24	1	20	0	20	2
Drove left of center	121	1	114	2	124	4	119	2	160	6
Improper passing	81	1	91	0	113	0	88	0	94	0
Improper lane use	323	0	356	1	385	0	367	0	412	0
Improper turn	200	0	212	0	207	0	264	0	216	1
Improper/no signal	35	0	35	0	38	0	22	0	28	0
Improper backing	274	0	285	0	284	0	298	0	300	1
Unable to stop in assured clear distance	2,269	3	2,234	1	2,519	2	2,516	1	2,626	1
Other	714	5	709	1	770	5	696	3	740	8
Unknown	464	7	457	8	473	6	497	3	785	10
Reckless driving	143	2	218	3	181	5	144	0	126	1
Careless/negligent driving	527	3	610	3	590	0	682	3	541	5
Uncoded & errors	130	0	91	0	86	0	70	0	66	0
Total	18,295	61	19,233	47	20,130	63	20,227	60	20,668	91



The picture above represents all 2016 alcohol-involved fatal crashes in Post 35.

In 2016, there were 375 alcohol-involved crashes in Post 35:

19 K - Fatal Crashes

30 A - Suspected Serious Injury Crashes

55 B - Suspected Minor Injury Crashes

63 C - Possible Injury Crashes

208 O - Property Damage Only/No Injury Crashes

Office of Highway Safety Planning

Physical Address:
7150 Harris Drive
Dimondale, Michigan 48821

Mailing Address:
P.O. Box 30634
Lansing, Michigan 48909

Phone: (517) 284-3112
Fax: (517) 284-3151

Find us on the web:
MichiganTrafficCrashFacts.org

