



2016

**MTCF**  
Michigan Traffic  
Crash Facts

# Michigan Traffic Crash Facts

## Reporting Criteria

Please pay particular attention to the wording when interpreting the three levels of data gathered for this report.

### Crash

The Crash Level analyzes data related to crash events and returns one result per crash.

Examples: Time, weather, and location.

### Units

The Units Level analyzes the experience of the units in the crash and returns one result per vehicle, driver, pedestrian, bicyclist, or train.

Examples: Vehicle type, driver condition, and unit events.

### People

The People Level analyzes the experience of the people involved in the crash and returns one result per occupant/person/party.

Examples: Age, injury severity, and seat belt or helmet use.

### **KABCO Injury Indicator:**

K = Killed

A = Suspected Serious Injury

B = Suspected Minor Injury

C = Possible Injury

O = No Injury

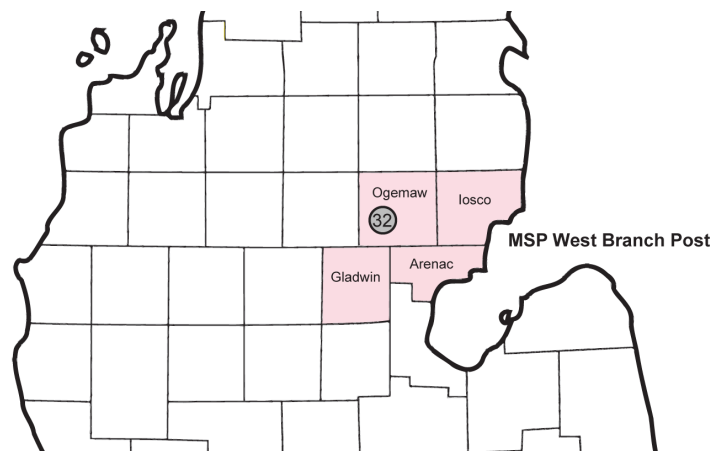
Property Damage Only (PDO)



## Michigan State Police (MSP) Post 32 - West Branch

### 2016 Traffic Crash Data & 2012-2016 5-Year Trends

Post 32 is comprised of Arenac, Gladwin, Iosco, and Ogemaw counties. Trend tables for this report are based on those counties.



### Sources:

The crashes in this report occurred on public roadways in Michigan and resulted in injuries, fatalities, or property damage (with \$1,000 as a reporting threshold). The information was gathered from Michigan Traffic Crash Report Forms (UD-10) submitted by local police departments, sheriff's offices, and the Michigan State Police. Other related information was obtained from the departments of Transportation, State, and Community Health.

This page left intentionally blank

## **MSP Post 32 - West Branch**

- There were 2,503 crashes in Post 32 during 2016. [Page 1]
- There were 9 fatalities in 8 fatal crashes in 2016 in Post 32. [Page 1]
- A total of 671 injuries resulted from 480 injury crashes. [Page 1]
- There were 2,015 property damage only crashes (no fatalities or injuries). [Page 1]
- November had the highest number of crashes (267). [Pages 1-2]
- February had the highest number of fatalities (3). [Pages 1-2]
- July had the highest number of injury crashes (55) and injuries (81). [Page 1]
- November had the highest number of property damage only crashes (225). [Page 1]
- Of all vehicles involved in fatal crashes, 1 (7.7%) was a motorcycle. [Page 1]
- Friday was the day of the week with the highest number of crashes (425) and Saturday had the highest number of fatal crashes (3). [Pages 2-3]
- The 6:00 PM – 8:59 PM time period had the highest number of crashes (469). The 9:00 PM – 11:59 PM time period had the highest number of fatal crashes (3). [Pages 5-6]
- During the period from 2012 to 2016, the highest number of deer crashes occurred in 2013 (1,488). The 6:00 PM – 8:59 PM time period consistently had the highest number of deer-involved crashes during the five-year period. There were no fatal crashes involving deer in 2016. [Pages 7-8]
- Ogemaw County (31.5%) had the highest number of crashes in Post 32 in 2016, followed by Iosco County (25.2%), and Arenac County (25.1%). [Page 8]
- Ogemaw County (55.6%) had the highest number of fatalities in Post 32 in 2016, followed by Gladwin County (22.2%). [Page 8]
- The highest number of drivers in crashes (3,515) occurred during 2013 and the highest number of drivers coded drinking in crashes (133) occurred during 2016 within the five-year period. [Page 9]
- A total of 132 crashes involved alcohol in 2016, which was the highest number during the five-year period. The lowest number of alcohol-involved crashes occurred in 2015, with 75. [Page 10]
- Alcohol-involved fatal crashes were the highest in 2013 during the five-year period from 2012 to 2016 at 4. [Page 10]
- A total of 28 crashes, 3 fatal crashes, and 4 suspected serious injury crashes involved drugs in 2016, all the highest during the five-year period. [Page 11]
- There were 2,997 drivers wearing seatbelts and 48 drivers not wearing seatbelts in crashes in 2016. Of the 48 drivers not wearing seat belts, none were killed and 28 (58.3%) were injured. [Pages 14-16]
- The most common hazardous action coded for drivers in 2016 in all crashes was speed too fast (489). [Page 17]

## Post 32 Experience

In 2016:

There were 3,269 drivers involved in 2,503 motor vehicle crashes in MSP Post 32. Of those crashes, 8 were classified as fatal, resulting in 9 fatalities. An additional 671 persons were injured.

Post 32 experienced the highest number of motor vehicle crashes (267) in November, the highest number of fatal crashes (2) in February and November, and the highest number of persons killed (3) in February.

Michigan driver statistics indicate 5.1 percent of licensed drivers in Post 32 were age 16-20, and 12.7 percent of drivers in crashes were also in that age group.

## 2016 - Crashes and Injuries by Month

Month	Crashes				Persons	
	Total	Fatal	Injury	Property Damage Only (PDO)	Fatalities	Injuries
January	238	0	36	202	0	47
February	212	2	38	172	3	55
March	176	1	24	151	1	35
April	184	0	33	151	0	40
May	175	1	36	138	1	50
June	233	0	51	182	0	74
July	225	1	55	169	1	81
August	193	0	46	147	0	65
September	167	1	43	123	1	68
October	181	0	42	139	0	53
November	267	2	40	225	2	52
December	252	0	36	216	0	51
<b>Total</b>	<b>2,503</b>	<b>8</b>	<b>480</b>	<b>2,015</b>	<b>9</b>	<b>671</b>

## 2016 - Driver Statistics

Age Group	Statewide			Driver Rates	
	2016 Population	Licensed Drivers	Drivers in Crashes	Per 10k Population	Per 10k Licensed
0 - 15	13,554	391	9	6.6	230.2
16 - 20	4,325	3,527	416	961.8	1,179.5
21 - 24	3,283	3,152	239	728.0	758.2
25 - 64	42,778	40,577	2,004	468.5	493.9
65 +	22,535	21,419	514	228.1	240.0
Unknown	0	0	87	--	--
<b>Total</b>	<b>86,475</b>	<b>69,066</b>	<b>3,269</b>	<b>378.0</b>	<b>473.3</b>

## 2016 - Vehicles in Crashes

Vehicle Type	Motor Vehicles		Fatal Crashes		Injury Crashes	PDO Crashes
	Number of Vehicles	% of Total	Number	% of Total	Number	Number
Passenger car, SUV, van	2,313	70.8	7	53.8	456	1,850
Motor home	40	1.2	0	0.0	10	30
Pickup truck	743	22.7	3	23.1	164	576
Small truck under 10,000 lbs. GVWR	17	0.5	0	0.0	4	13
Motorcycle	39	1.2	1	7.7	31	7
Moped / goped	3	0.1	0	0.0	3	0
Go-cart / golf cart	1	0.0	0	0.0	1	0
Snowmobile	1	0.0	0	0.0	1	0
Off-Road Vehicle - ORV / All-Terrain Vehicle - ATV	20	0.6	2	15.4	16	2
Other	14	0.4	0	0.0	4	10
Truck/bus over 10,000 lbs.	55	1.7	0	0.0	11	44
Unknown	23	0.7	0	0.0	1	22
<b>Total</b>	<b>3,269</b>	<b>100.0</b>	<b>13</b>	<b>100.0</b>	<b>702</b>	<b>2,554</b>

## MSP Post 32 - West Branch (continued)

### 5-Year Trend - Crashes by Month

Month	2012		2013		2014		2015		2016	
	Total Crashes	Fatal Crashes	Total Crashes	Fatal Crashes	Total Crashes	Fatal Crashes	Total Crashes	Fatal Crashes	Total Crashes	Fatal Crashes
January	311	1	250	0	260	0	179	0	238	0
February	244	0	239	3	180	1	191	0	212	2
March	192	0	224	1	235	1	167	0	176	1
April	143	0	189	0	202	1	158	0	184	0
May	190	2	188	0	176	2	215	4	175	1
June	216	3	243	1	239	1	254	1	233	0
July	223	0	222	5	214	0	222	2	225	1
August	168	3	203	0	173	0	167	1	193	0
September	217	0	198	3	188	1	200	2	167	1
October	291	1	278	1	256	1	311	3	181	0
November	385 †	0	345 †	2	397 †	2	422 †	1	267 †	2
December	239	2	306	0	219	0	162	2	252	0
<b>Total</b>	<b>2,819</b>	<b>12</b>	<b>2,885</b>	<b>16</b>	<b>2,739</b>	<b>10</b>	<b>2,648</b>	<b>16</b>	<b>2,503</b>	<b>8</b>

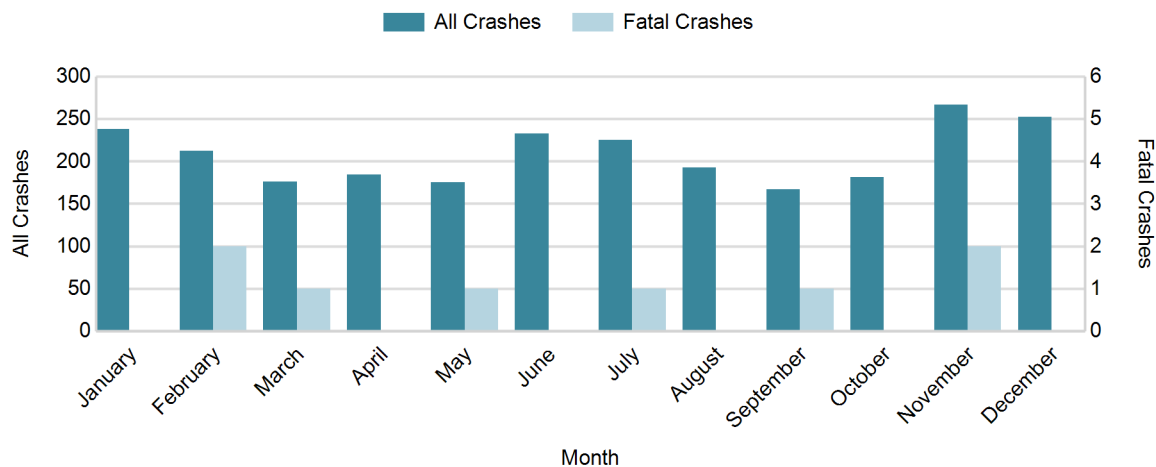
Note: † Indicates that the highest number of total crashes reported in the 5-year period occurred in the same month

### 5-Year Trend - Crashes by Day of Week

Day	2012		2013		2014		2015		2016	
	Total Crashes	Fatal Crashes	Total Crashes	Fatal Crashes	Total Crashes	Fatal Crashes	Total Crashes	Fatal Crashes	Total Crashes	Fatal Crashes
Monday	394	2	383	0	379	1	385	3	333	1
Tuesday	344	2	414	4	335	0	368	1	350	1
Wednesday	366	0	366	1	389	3	358	1	367	1
Thursday	399	0	424	0	418	1	365	0	364	1
Friday	526	2	450	2	493	1	468	6	425	1
Saturday	417	2	480	5	350	3	362	4	334	3
Sunday	373	4	368	4	375	1	342	1	330	0
<b>Total</b>	<b>2,819</b>	<b>12</b>	<b>2,885</b>	<b>16</b>	<b>2,739</b>	<b>10</b>	<b>2,648</b>	<b>16</b>	<b>2,503</b>	<b>8</b>

Note: † Indicates that the highest number of total crashes reported in the 5-year period occurred on the same day of the week

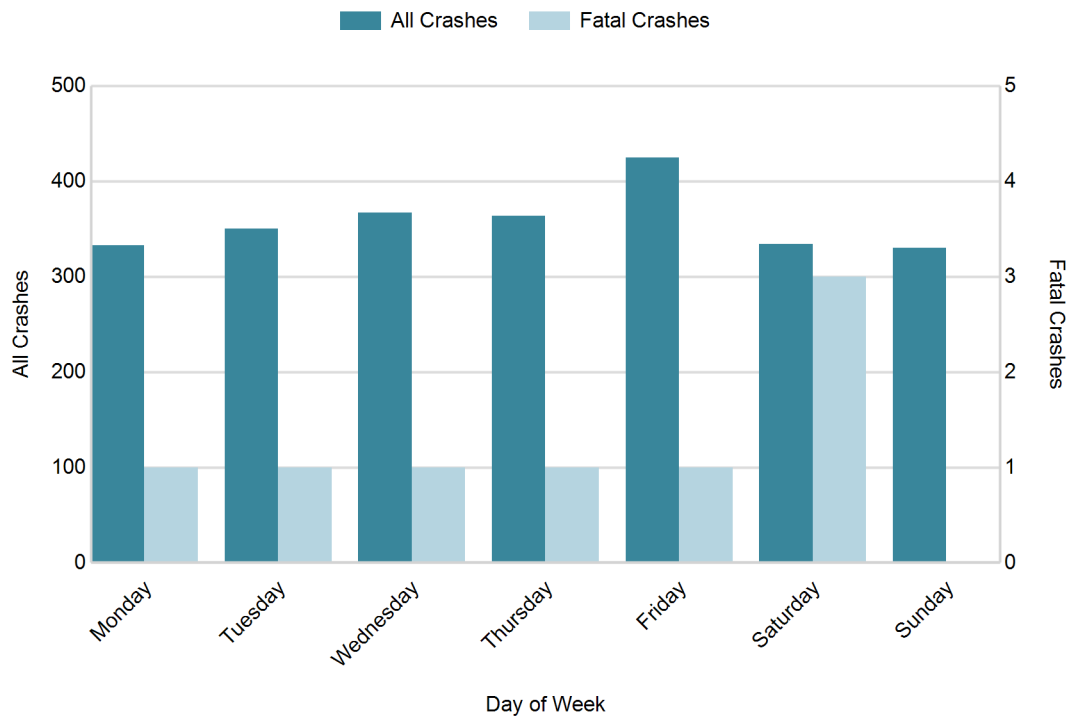
### 2016 Crashes by Month



## 2016 - Crashes by Day of Week

Day	All Crashes		Fatal Crashes		Injury Crashes			PDO Crashes
	Number	% of Total	Number	% of Fatal	A	B	C	Number
Monday	333	13.3	1	12.5	8	16	24	284
Tuesday	350	14.0	1	12.5	6	27	30	286
Wednesday	367	14.7	1	12.5	17	17	42	290
Thursday	364	14.5	1	12.5	6	22	37	298
Friday	425	17.0	1	12.5	9	30	51	334
Saturday	334	13.3	3	37.5	15	23	30	263
Sunday	330	13.2	0	0.0	18	21	31	260
<b>Total</b>	<b>2,503</b>	<b>100.0</b>	<b>8</b>	<b>100.0</b>	<b>79</b>	<b>156</b>	<b>245</b>	<b>2,015</b>

## 2016 Day of Week and Severity

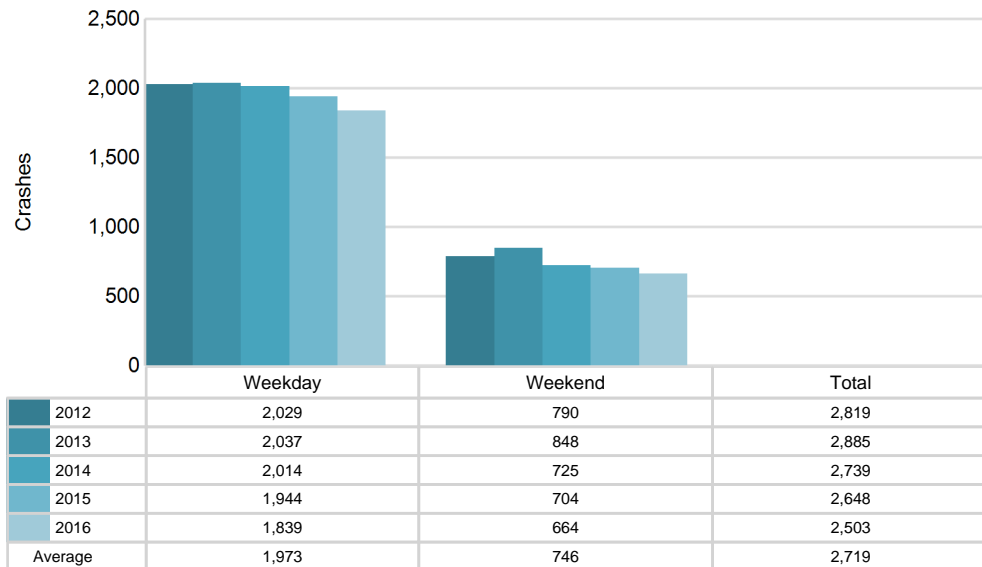


## MSP Post 32 - West Branch (continued)

### 5-Year Trend - Crashes by Weekday and Weekend

Portion of Week	2012		2013		2014		2015		2016	
	Total Crashes	Fatal Crashes	Total Crashes	Fatal Crashes	Total Crashes	Fatal Crashes	Total Crashes	Fatal Crashes	Total Crashes	Fatal Crashes
Weekday	2,029	6	2,037	7	2,014	6	1,944	11	1,839	5
Weekend	790	6	848	9	725	4	704	5	664	3
<b>Total</b>	<b>2,819</b>	<b>12</b>	<b>2,885</b>	<b>16</b>	<b>2,739</b>	<b>10</b>	<b>2,648</b>	<b>16</b>	<b>2,503</b>	<b>8</b>

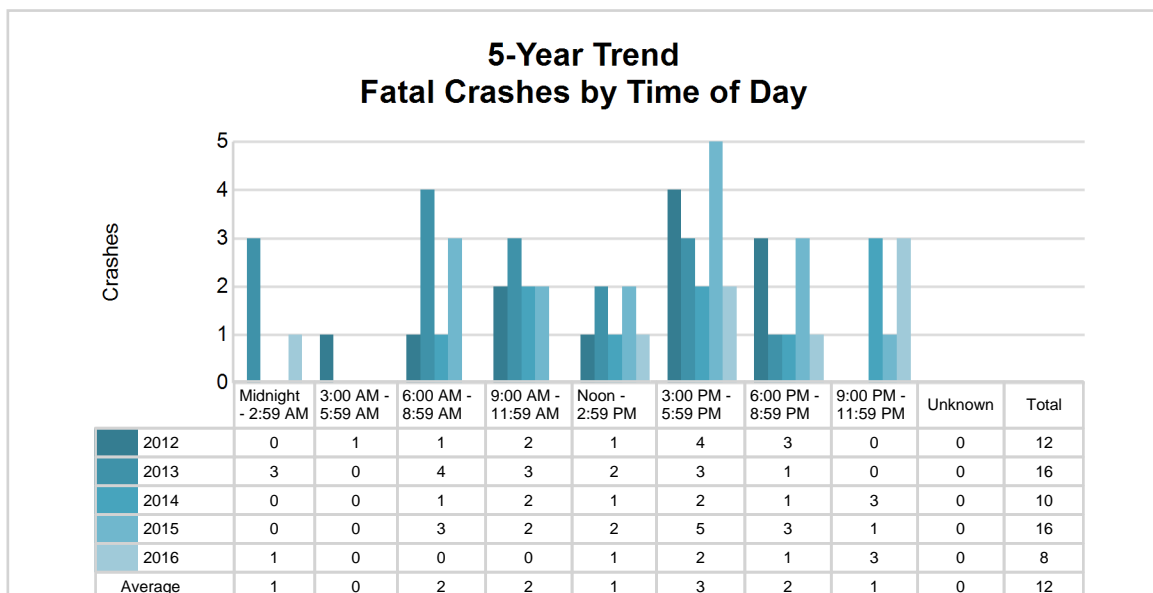
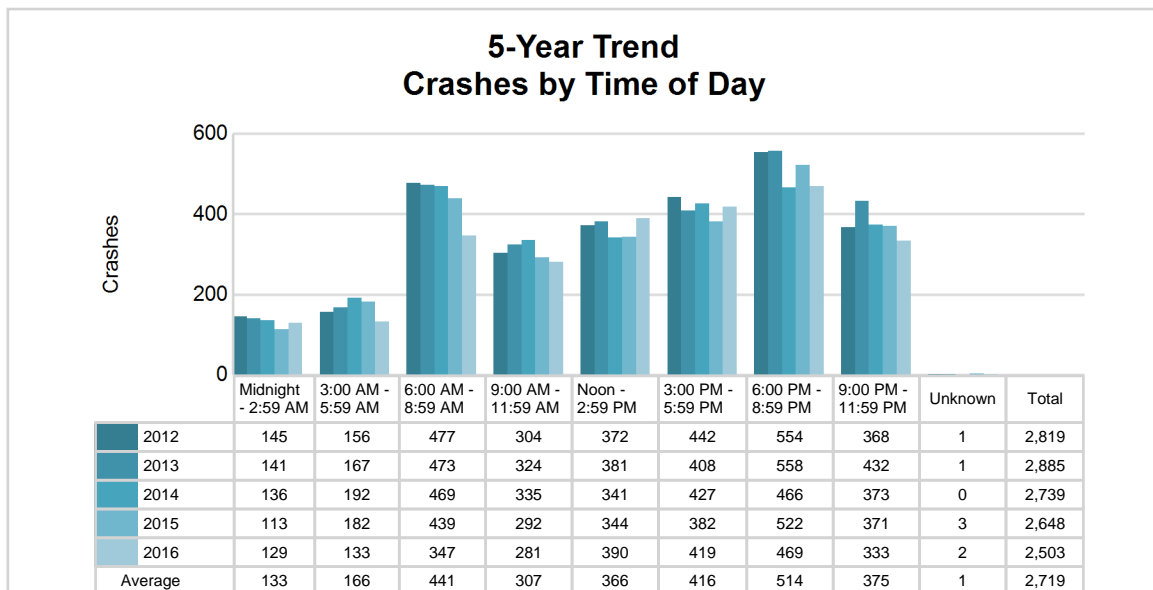
### 5-Year Crash Trends by Weekday (Monday - Friday) and Weekend (Saturday & Sunday)



## 5-Year Trend - Crashes by Time of Day

Time of Day	2012		2013		2014		2015		2016	
	Total Crashes	Fatal Crashes	Total Crashes	Fatal Crashes	Total Crashes	Fatal Crashes	Total Crashes	Fatal Crashes	Total Crashes	Fatal Crashes
Midnight - 2:59 AM	145	0	141	3	136	0	113	0	129	1
3:00 AM - 5:59 AM	156	1	167	0	192	0	182	0	133	0
6:00 AM - 8:59 AM	477	1	473	4	469	1	439	3	347	0
9:00 AM - 11:59 AM	304	2	324	3	335	2	292	2	281	0
Noon - 2:59 PM	372	1	381	2	341	1	344	2	390	1
3:00 PM - 5:59 PM	442	4	408	3	427	2	382	5	419	2
6:00 PM - 8:59 PM	554	3	558	1	466	1	522	3	469	1
9:00 PM - 11:59 PM	368	0	432	0	373	3	371	1	333	3
Unknown	1	0	1	0	0	0	3	0	2	0
<b>Total</b>	<b>2,819</b>	<b>12</b>	<b>2,885</b>	<b>16</b>	<b>2,739</b>	<b>10</b>	<b>2,648</b>	<b>16</b>	<b>2,503</b>	<b>8</b>

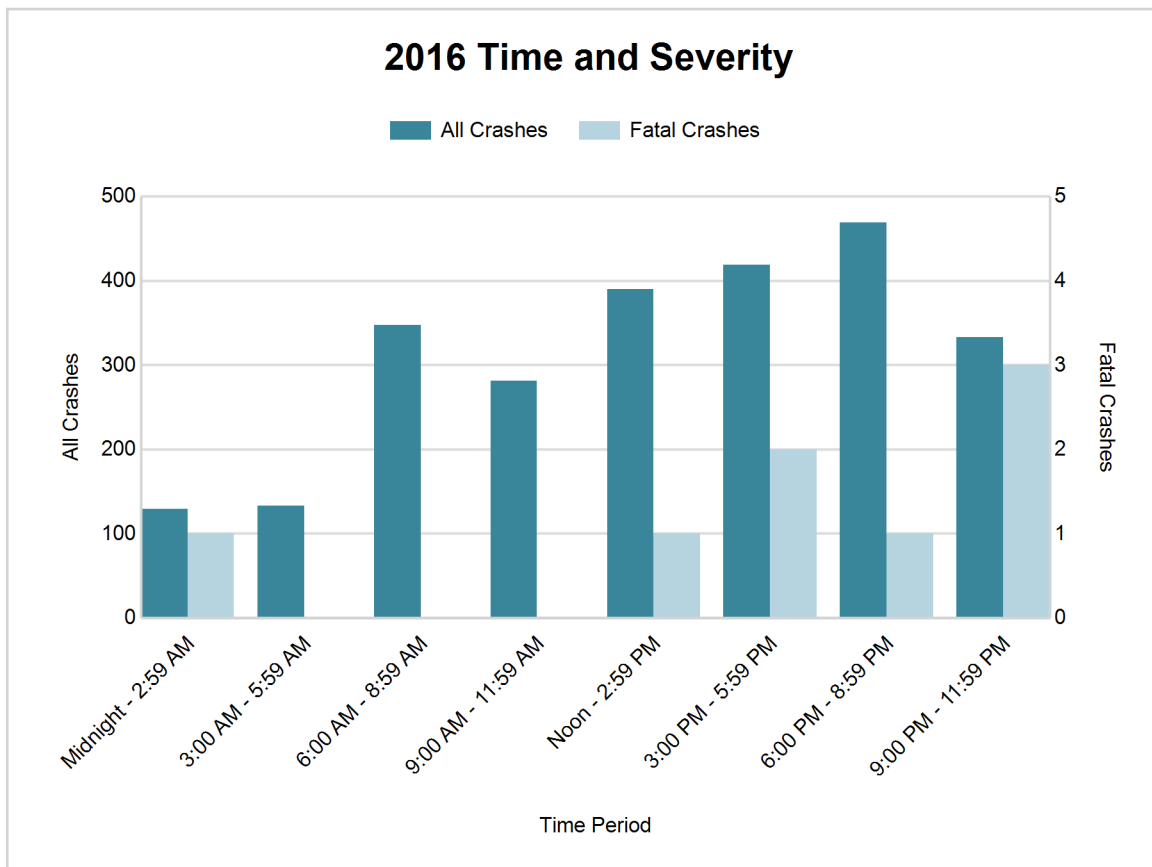
Note: † Indicates that the highest number of total crashes reported in the 5-year period occurred in the same time period



## MSP Post 32 - West Branch (continued)

### 2016 - Time and Severity

Time of Day	All Crashes		Fatal Crashes		Injury Crashes			PDO Crashes
	Number	% of Total	Number	% of Fatal	A	B	C	Number
Midnight - 2:59 AM	129	5.2	1	12.5	5	9	5	109
3:00 AM - 5:59 AM	133	5.3	0	0.0	5	4	11	113
6:00 AM - 8:59 AM	347	13.9	0	0.0	5	11	30	301
9:00 AM - 11:59 AM	281	11.2	0	0.0	10	30	35	206
Noon - 2:59 PM	390	15.6	1	12.5	20	24	49	296
3:00 PM - 5:59 PM	419	16.7	2	25.0	15	33	57	312
6:00 PM - 8:59 PM	469	18.7	1	12.5	9	22	34	403
9:00 PM - 11:59 PM	333	13.3	3	37.5	10	22	24	274
Unknown	2	0.1	0	0.0	0	1	0	1
<b>Total</b>	<b>2,503</b>	<b>100.0</b>	<b>8</b>	<b>100.0</b>	<b>79</b>	<b>156</b>	<b>245</b>	<b>2,015</b>

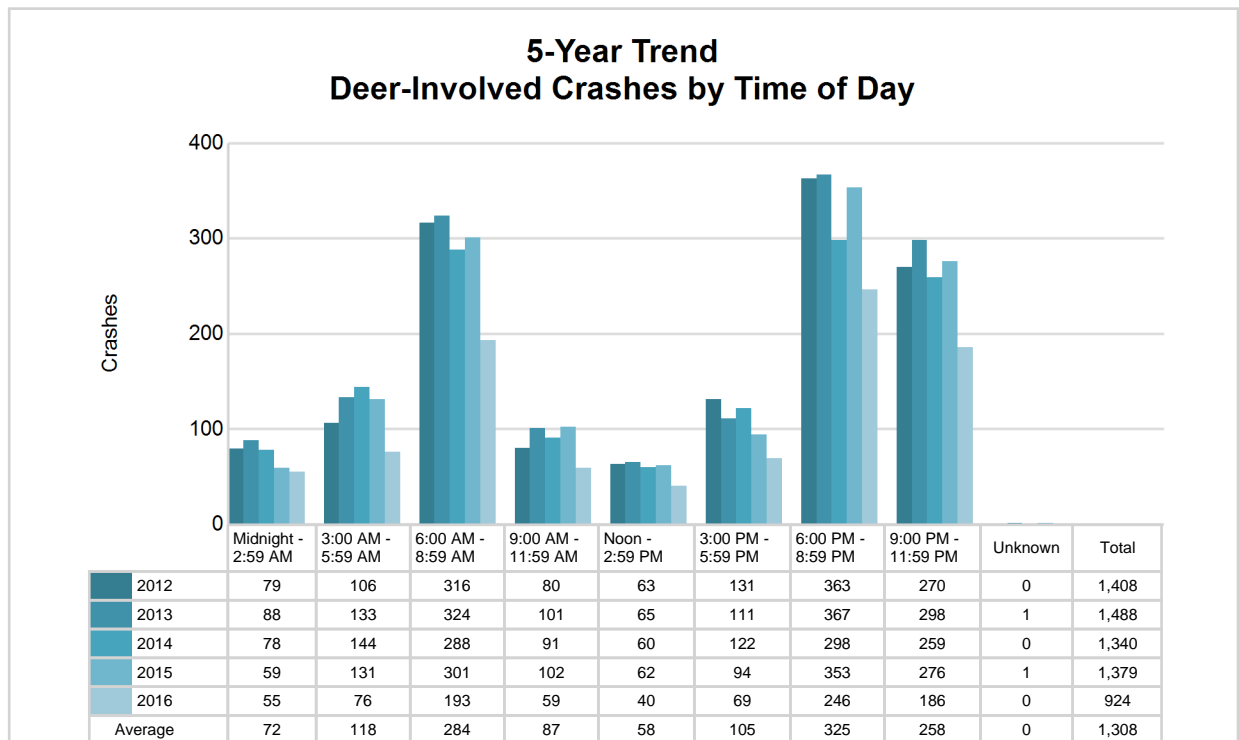


# MSP Post 32 - West Branch (continued)

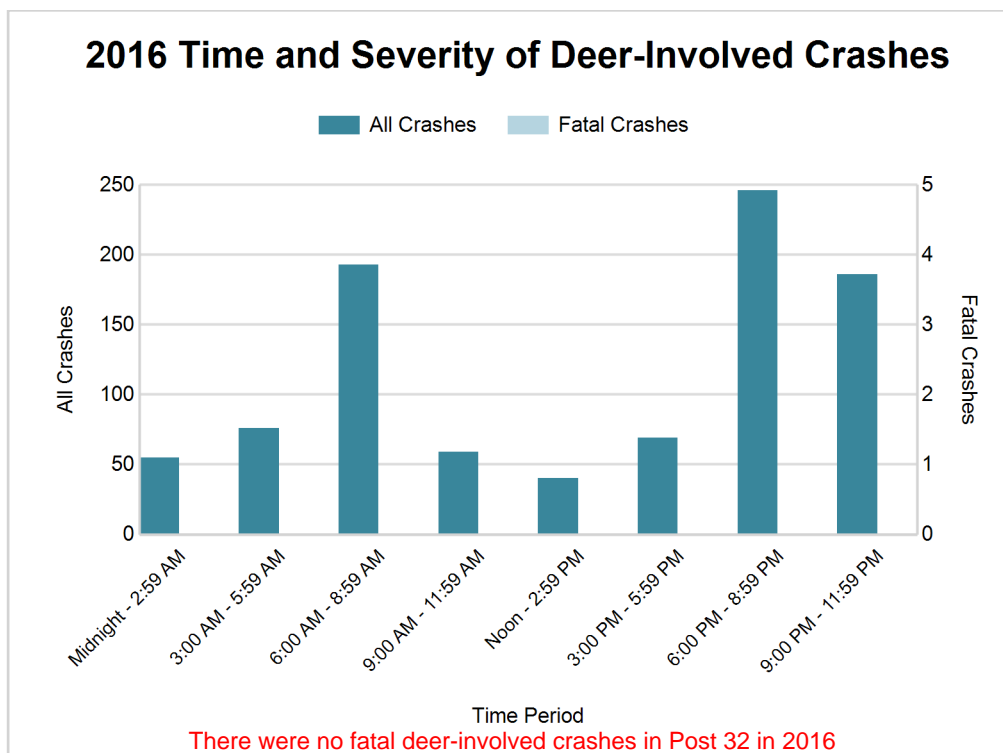
## 5-Year Trend - Deer-Involved Crashes by Time of Day

Time of Day	2012		2013		2014		2015		2016	
	Total Crashes	Fatal Crashes	Total Crashes	Fatal Crashes	Total Crashes	Fatal Crashes	Total Crashes	Fatal Crashes	Total Crashes	Fatal Crashes
Midnight - 2:59 AM	79	0	88	0	78	0	59	0	55	0
3:00 AM - 5:59 AM	106	0	133	0	144	0	131	0	76	0
6:00 AM - 8:59 AM	316	0	324	0	288	0	301	1	193	0
9:00 AM - 11:59 AM	80	0	101	0	91	0	102	0	59	0
Noon - 2:59 PM	63	0	65	0	60	0	62	0	40	0
3:00 PM - 5:59 PM	131	0	111	0	122	0	94	0	69	0
6:00 PM - 8:59 PM	363 †	0	367 †	0	298 †	0	353 †	0	246 †	0
9:00 PM - 11:59 PM	270	0	298	0	259	1	276	0	186	0
Unknown	0	0	1	0	0	0	1	0	0	0
<b>Total</b>	<b>1,408</b>	<b>0</b>	<b>1,488</b>	<b>0</b>	<b>1,340</b>	<b>1</b>	<b>1,379</b>	<b>1</b>	<b>924</b>	<b>0</b>

Note: † Indicates that the highest number of total crashes reported in the 5-year period occurred in the same time period



## MSP Post 32 - West Branch (continued)



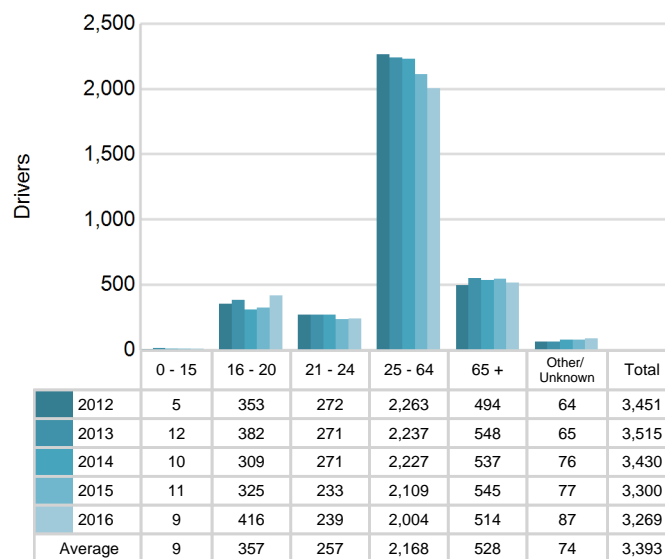
### 2016 - Reported Motor Vehicle Crashes by County

County	Crashes											Persons	
	Total	Fatal	Injury	Property Damage	Inter-state	US Route	State Route	Local Street	Alcohol-Involved	Drug-Involved	Deer-Involved	Fatalities	Injuries
Arenac	629	1	104	524	122	147	68	291	38	5	235	1	138
Gladwin	455	2	135	318	0	0	174	277	37	5	74	2	196
Iosco	631	1	119	511	0	167	145	317	35	8	214	1	159
Ogemaw	788	4	122	662	138	0	253	390	22	10	401	5	178
<b>Total</b>	<b>2,503</b>	<b>8</b>	<b>480</b>	<b>2,015</b>	<b>260</b>	<b>314</b>	<b>640</b>	<b>1,275</b>	<b>132</b>	<b>28</b>	<b>924</b>	<b>9</b>	<b>671</b>

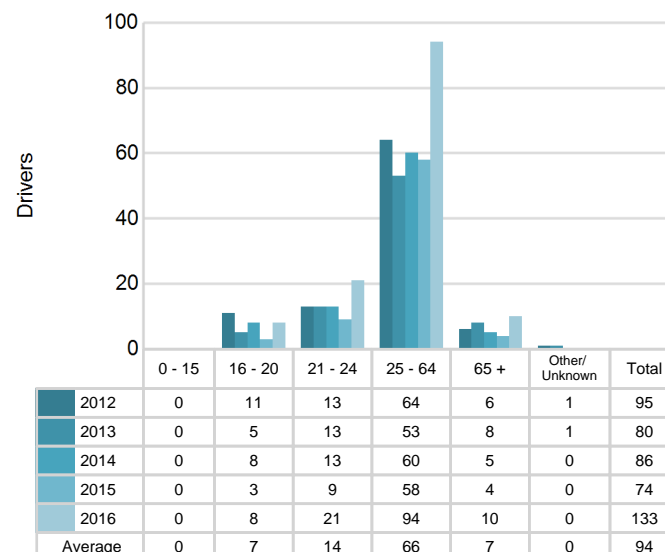
## 5-Year Trend - Drivers in Crashes Coded Drinking by Driver Age

Driver Age	2012		2013		2014		2015		2016	
	Total Drivers in Crashes	Total Drivers Coded Drinking	Total Drivers in Crashes	Total Drivers Coded Drinking	Total Drivers in Crashes	Total Drivers Coded Drinking	Total Drivers in Crashes	Total Drivers Coded Drinking	Total Drivers in Crashes	Total Drivers Coded Drinking
0 - 15	5	0	12	0	10	0	11	0	9	0
16 - 20	353	11	382	5	309	8	325	3	416	8
21 - 24	272	13	271	13	271	13	233	9	239	21
25 - 64	2,263	64	2,237	53	2,227	60	2,109	58	2,004	94
65 +	494	6	548	8	537	5	545	4	514	10
Unknown	64	1	65	1	76	0	77	0	87	0
<b>Total</b>	<b>3,451</b>	<b>95</b>	<b>3,515</b>	<b>80</b>	<b>3,430</b>	<b>86</b>	<b>3,300</b>	<b>74</b>	<b>3,269</b>	<b>133</b>

**5-Year Trend  
Total Drivers in Crashes by Age**



**5-Year Trend  
Total Drivers Coded Drinking by Age**



# MSP Post 32 - West Branch (continued)

## 2016 - Bodily Alcohol Concentration (BAC) Results Among All Vehicle Drivers in Alcohol-Involved Crashes by Age

Age Group	Drivers				BAC Result Range for Drivers Coded Drinking				
	Total Drivers in Alcohol-Involved Crashes	Total Drivers Tested in all Crashes	Total Drivers Coded Drinking, Tested	Total Drivers Coded Drinking	BAC = 0.00	BAC 0.01 g/dL to 0.07 g/dL	BAC 0.08 g/dL to 0.16 g/dL	BAC 0.17 g/dL and Above	BAC Not Reported
0 - 15	0	1	0	0	0	0	0	0	0
16 - 20	9	11	6	8	1	1	1	1	4
21 - 24	23	21	19	21	0	4	8	3	6
25 - 64	104	95	80	94	1	12	29	20	32
65 +	14	11	8	10	0	0	5	2	3
Unknown	4	0	0	0	0	0	0	0	0
<b>Total</b>	<b>154</b>	<b>139</b>	<b>113</b>	<b>133</b>	<b>2</b>	<b>17</b>	<b>43</b>	<b>26</b>	<b>45</b>

Notes: BAC measured in grams (g) per deciliter (dL).

BAC may not be reported if drivers are not tested or if the results are not available immediately (as in the case of a blood test).

A driver may be coded by the officer as drinking even though no test is administered.

## Alcohol-Involved Crashes

In 2016, there were 154 drivers in alcohol-involved crashes; 133 (86.4%) of those drivers were coded as had-been-drinking by the officer on the crash form.

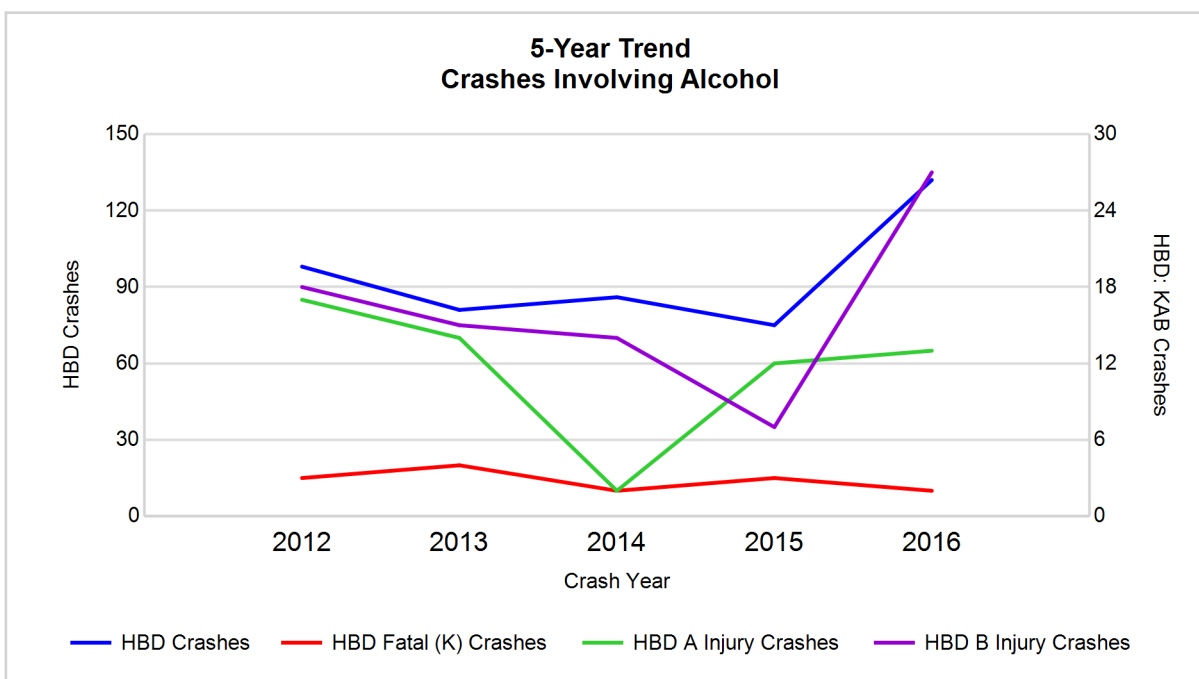
- 69 (51.9%) of the 133 drivers had a blood alcohol concentration (BAC) of 0.08 g/dL (grams per deciliter) or greater, and 26 (37.7%) of the 69 drivers had a BAC at or above 0.17 g/dL.
- 113 (85.0%) of the 133 drivers were coded as had-been-drinking and were tested for alcohol consumption.

## 5-Year Trend - Crashes Involving Alcohol

Year	All Crashes	HBD Crashes	% HBD	Fatal Crashes	HBD Fatal Crashes	% HBD	A Injury Crashes	HBD A Injury Crashes	% HBD	B Injury Crashes	HBD B Injury Crashes	% HBD
2012	2,819	98	3.5	12	3	25.0	82	17	20.7	120	18	15.0
2013	2,885	81	2.8	16	4	25.0	76	14	18.4	132	15	11.4
2014	2,739	86	3.1	10	2	20.0	60	2	3.3	88	14	15.9
2015	2,648	75	2.8	16	3	18.8	54	12	22.2	116	7	6.0
2016	2,503*	132**	5.3**	8*	2	25.0	79	13	16.5	156**	27**	17.3**

Note: \* Indicates that the most recent year is the lowest number or percentage reported in the 5-year period in that column

\*\* Indicates that the most recent year is the highest number or percentage reported in the 5-year period in that column

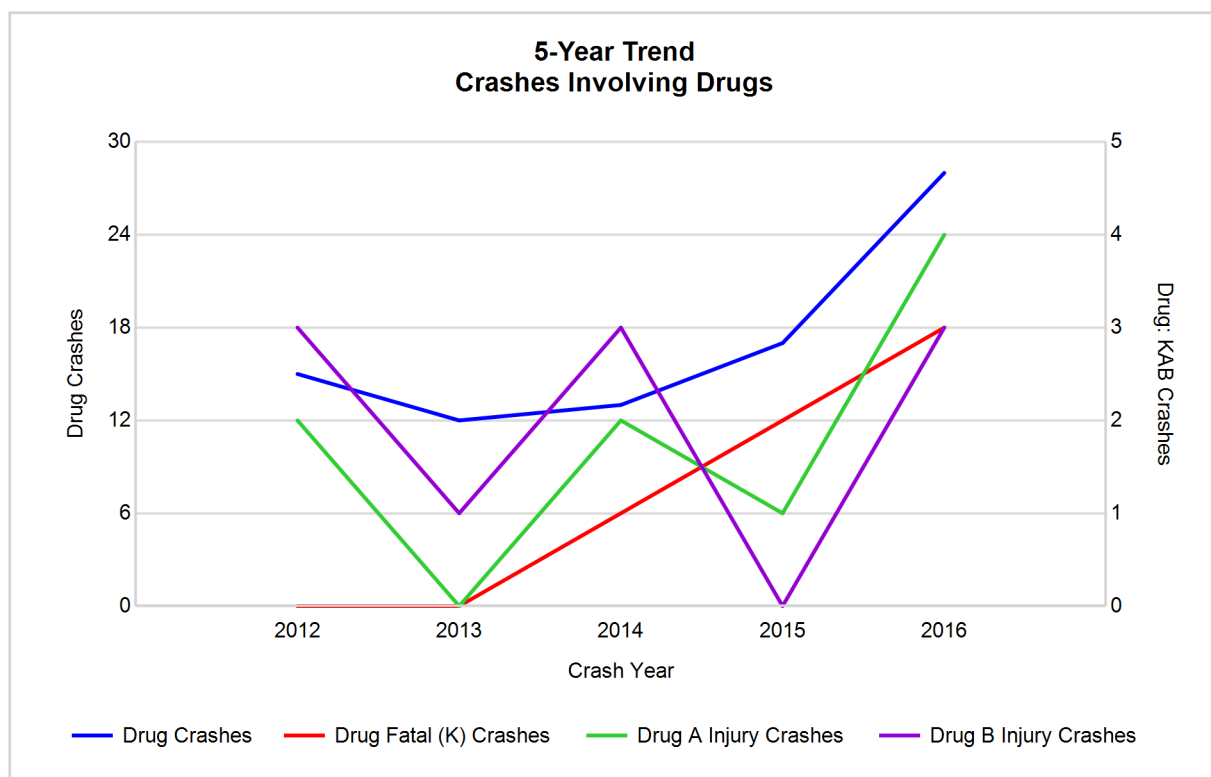


Note: Had-Been-Drinking (HBD)

## 5-Year Trend - Crashes Involving Drugs

Year	All Crashes	Drug Crashes	% Drug	Fatal Crashes	Drug Fatal Crashes	% Drug	A Injury Crashes	Drug A Injury Crashes	% Drug	B Injury Crashes	Drug B Injury Crashes	% Drug
2012	2,819	15	0.5	12	0	0.0	82	2	2.4	120	3	2.5
2013	2,885	12	0.4	16	0	0.0	76	0	0.0	132	1	0.8
2014	2,739	13	0.5	10	1	10.0	60	2	3.3	88	3	3.4
2015	2,648	17	0.6	16	2	12.5	54	1	1.9	116	0	0.0
2016	2,503*	28**	1.1**	8*	3**	37.5**	79	4**	5.1**	156**	3	1.9

Note: \* Indicates that the most recent year is the lowest number or percentage reported in the 5-year period in that column  
 \*\* Indicates that the most recent year is the highest number or percentage reported in the 5-year period in that column



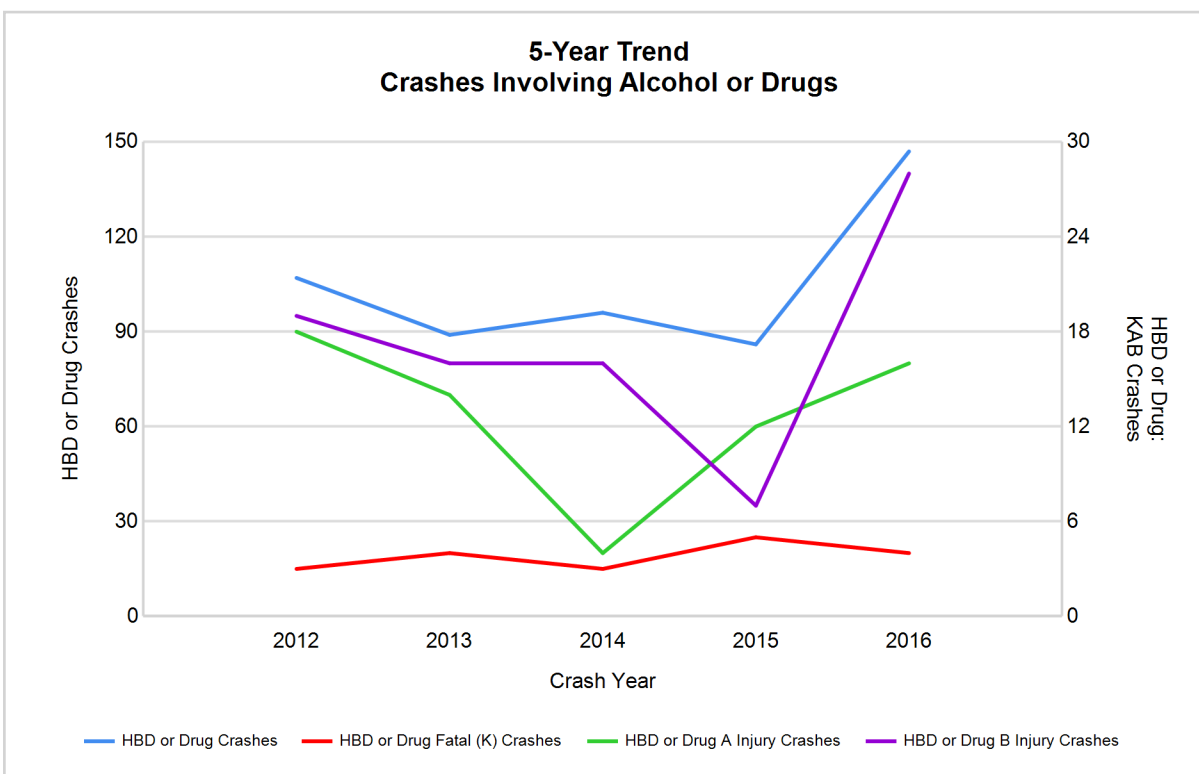
# MSP Post 32 - West Branch (continued)

## 5-Year Trend - Crashes Involving Alcohol or Drugs

Year	All Crashes	HBD or Drug Crashes	% HBD or Drug	Fatal Crashes	HBD or Drug Fatal Crashes	% HBD or Drug	A Injury Crashes	HBD or Drug A Injury Crashes	% HBD or Drug	B Injury Crashes	HBD or Drug B Injury Crashes	% HBD or Drug
2012	2,819	107	3.8	12	3	25.0	82	18	22.0	120	19	15.8
2013	2,885	89	3.1	16	4	25.0	76	14	18.4	132	16	12.1
2014	2,739	96	3.5	10	3	30.0	60	4	6.7	88	16	18.2
2015	2,648	86	3.2	16	5	31.3	54	12	22.2	116	7	6.0
2016	2,503*	147**	5.9**	8*	4	50.0**	79	16	20.3	156**	28**	17.9

Note: \* Indicates that the most recent year is the lowest number or percentage reported in the 5-year period in that column

\*\* Indicates that the most recent year is the highest number or percentage reported in the 5-year period in that column



Note: Had-Been-Drinking (HBD)

# MSP Post 32 - West Branch (continued)

13

## 2016 - Restraints Worn Among Vehicle Drivers and Injured Passengers by Vehicle Type

Vehicle Type	Total Occupants			Fatalities			A - Suspected Serious			B - Suspected Minor			C - Possible Injury			No Injury		
	Total	Used Restraint	%	Total	Used Restraint	%	Total	Used Restraint	%	Total	Used Restraint	%	Total	Used Restraint	%	Total	Used Restraint	%
Passenger car, SUV, van	2,433	2,297	94.4	6	4	66.7	63	52	82.5	121	98	81.0	238	225	94.5	1,950	1,910	97.9
Motor home	45	41	91.1	0	0	0.0	1	1	100.0	5	2	40.0	4	4	100.0	34	34	100.0
Pickup truck	782	718	91.8	0	0	0.0	16	7	43.8	50	41	82.0	73	66	90.4	617	595	96.4
Small truck under 10,000 lbs. GVWR	18	15	83.3	0	0	0.0	0	0	0.0	1	1	100.0	4	3	75.0	12	11	91.7
Motorcycle	43	27	62.8	1	0	0.0	11	4	36.4	13	9	69.2	9	8	88.9	9	6	66.7
Moped / goped	3	2	66.7	0	0	0.0	0	0	0.0	1	1	100.0	2	1	50.0	0	0	0.0
Go-cart / golf cart	5	0	0.0	0	0	0.0	3	0	0.0	1	0	0.0	0	0	0.0	1	0	0.0
Snowmobile	2	2	100.0	0	0	0.0	1	1	100.0	0	0	0.0	1	1	100.0	0	0	0.0
Off-Road Vehicle - ORV / All-Terrain Vehicle - ATV	29	9	31.0	2	1	50.0	7	3	42.9	11	2	18.2	6	2	33.3	2	1	50.0
Other	15	12	80.0	0	0	0.0	0	0	0.0	2	1	50.0	1	1	100.0	12	10	83.3
Truck/bus over 10,000 lbs.	60	48	80.0	0	0	0.0	0	0	0.0	2	1	50.0	6	2	33.3	51	45	88.2
Unknown	23	2	8.7	0	0	0.0	0	0	0.0	0	0	0.0	0	0	0.0	3	2	66.7
<b>Total</b>	<b>3,458</b>	<b>3,173</b>	<b>91.8</b>	<b>9</b>	<b>5</b>	<b>55.6</b>	<b>102</b>	<b>68</b>	<b>66.7</b>	<b>207</b>	<b>156</b>	<b>75.4</b>	<b>344</b>	<b>313</b>	<b>91.0</b>	<b>2,691</b>	<b>2,614</b>	<b>97.1</b>

Note: Restraint Use includes shoulder belt only used, lap belt only used, both lap and shoulder belts used, child restraint used, restraint failure, and helmet worn.

## 2016 - Restraints Worn Among Vehicle Drivers and Injured Passengers by Age

Age Group	Total Occupants			Fatalities			A - Suspected Serious			B - Suspected Minor			C - Possible Injury			No Injury		
	Total	Used Restraint	%	Total	Used Restraint	%	Total	Used Restraint	%	Total	Used Restraint	%	Total	Used Restraint	%	Total	Used Restraint	%
0 - 15	52	36	69.2	0	0	0.0	11	10	90.9	17	8	47.1	19	13	68.4	5	5	100.0
16 - 20	442	411	93.0	3	2	66.7	11	8	72.7	30	23	76.7	63	54	85.7	334	323	96.7
21 - 24	259	238	91.9	0	0	0.0	9	4	44.4	31	24	77.4	24	22	91.7	195	188	96.4
25 - 64	2,074	1,965	94.7	6	3	50.0	61	38	62.3	98	76	77.6	171	160	93.6	1,728	1,679	97.2
65 +	543	523	96.3	0	0	0.0	10	8	80.0	31	25	80.6	66	64	97.0	428	419	97.9
Unknown	88	0	0.0	0	0	0.0	0	0	0.0	0	0	0.0	1	0	0.0	1	0	0.0
<b>Total</b>	<b>3,458</b>	<b>3,173</b>	<b>91.8</b>	<b>9</b>	<b>5</b>	<b>55.6</b>	<b>102</b>	<b>68</b>	<b>66.7</b>	<b>207</b>	<b>156</b>	<b>75.4</b>	<b>344</b>	<b>313</b>	<b>91.0</b>	<b>2,691</b>	<b>2,614</b>	<b>97.1</b>

Note: Restraint Use includes shoulder belt only used, lap belt only used, both lap and shoulder belts used, child restraint used, restraint failure, and helmet worn.

## MSP Post 32 - West Branch (continued)

## 5-Year Trend - Restraint Use Among Drivers

Restraint Use	2012			2013			2014			2015			2016		
	Drivers	Fatal Drivers	Injured Drivers	Drivers	Fatal Drivers	Injured Drivers	Drivers	Fatal Drivers	Injured Drivers	Drivers	Fatal Drivers	Injured Drivers	Drivers	Fatal Drivers	Injured Drivers
No belts available	28	0	3	26	0	9	23	0	4	9	1	1	16	0	5
Shoulder belt only used	4	0	0	2	0	1	2	0	1	0	0	0	7	0	1
Lap belt only used	6	0	1	8	0	2	5	0	0	8	0	3	10	0	2
Both lap & shoulder belts used	3,189	7	318	3,241	5	294	3,128	2	278	3,045	3	290	2,978	4	367
No belts used	30	2	16	30	2	14	33	2	15	31	5	14	32	0	23
Child restraint used	0	0	0	0	0	0	0	0	0	0	0	0	2	0	0
Child restraint not used, unavailable or improper use	0	0	0	1	0	0	1	0	0	0	0	0	0	0	0
Restraint failure	1	0	0	0	0	0	0	0	0	0	0	0	2	0	0
Restraint use unknown	74	0	11	74	0	10	110	0	20	93	0	13	116	1	21
Helmet worn	38	1	28	46	3	34	35	1	23	22	1	13	37	1	30
Helmet not worn	16	1	10	30	1	27	15	1	13	24	3	17	17	1	14
Helmet use unknown	4	0	4	1	0	1	1	1	0	1	0	1	5	0	3
Uncoded & errors	61	0	3	56	0	0	77	0	1	67	0	0	47	0	0
<b>Total</b>	<b>3,451</b>	<b>11</b>	<b>394</b>	<b>3,515</b>	<b>11</b>	<b>392</b>	<b>3,430</b>	<b>7</b>	<b>355</b>	<b>3,300</b>	<b>13</b>	<b>352</b>	<b>3,269</b>	<b>7</b>	<b>466</b>

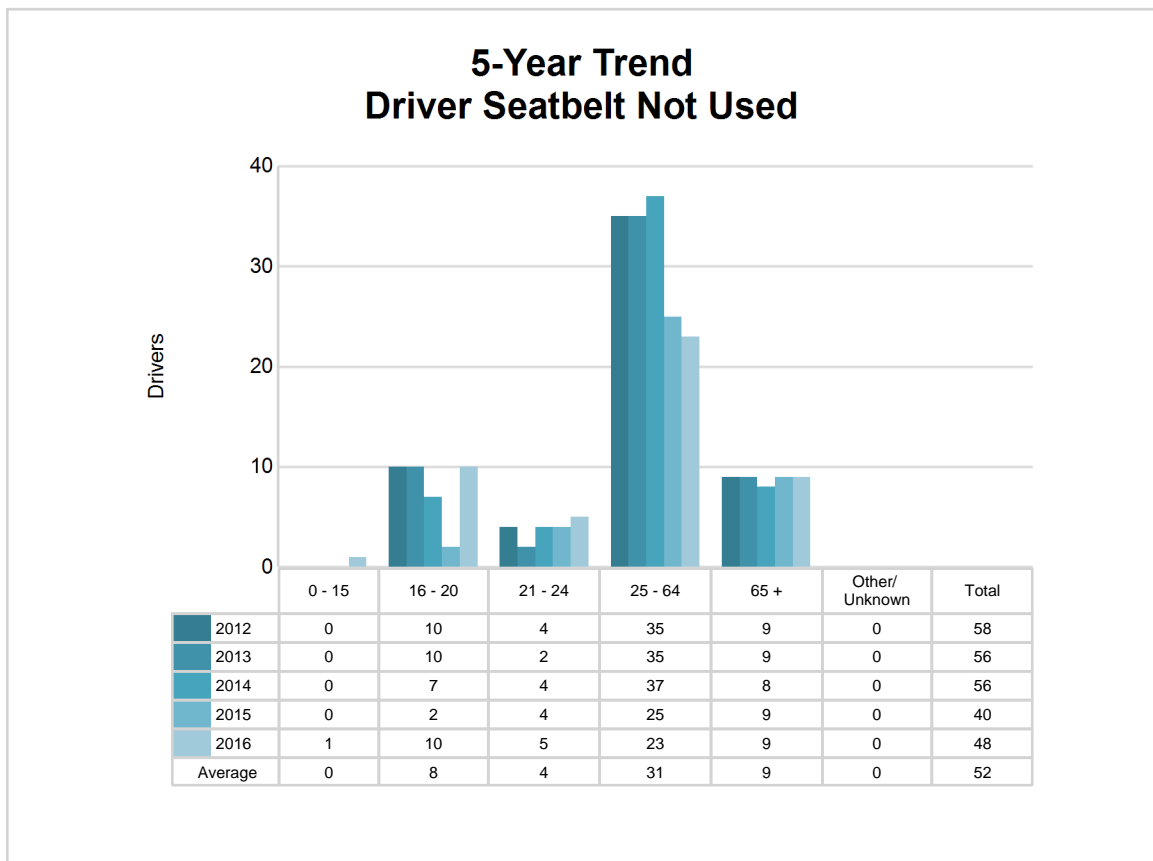
## 5-Year Trend - Restraint Use Among Drivers Coded Drinking

Restraint Use	2012			2013			2014			2015			2016		
	Drivers	Fatal Drivers	Injured Drivers	Drivers	Fatal Drivers	Injured Drivers	Drivers	Fatal Drivers	Injured Drivers	Drivers	Fatal Drivers	Injured Drivers	Drivers	Fatal Drivers	Injured Drivers
No belts available	0	0	0	3	0	2	0	0	0	0	0	0	1	0	0
Shoulder belt only used	0	0	0	0	0	0	0	0	0	0	0	0	0	0	0
Lap belt only used	0	0	0	0	0	0	0	0	0	0	0	0	0	0	0
Both lap & shoulder belts used	58	1	22	48	0	11	58	1	8	55	1	11	97	0	37
No belts used	10	1	7	2	1	1	7	0	5	5	0	5	11	0	8
Child restraint used	0	0	0	0	0	0	0	0	0	0	0	0	0	0	0
Child restraint not used, unavailable or improper use	0	0	0	0	0	0	0	0	0	0	0	0	0	0	0
Restraint failure	0	0	0	0	0	0	0	0	0	0	0	0	0	0	0
Restraint use unknown	16	0	6	13	0	4	17	0	4	9	0	3	22	1	7
Helmet worn	3	0	3	7	1	6	2	0	2	2	1	1	1	1	0
Helmet not worn	3	0	3	5	1	4	2	0	2	3	1	2	1	0	1
Helmet use unknown	3	0	3	1	0	1	0	0	0	0	0	0	0	0	0
Uncoded & errors	2	0	1	1	0	0	0	0	0	0	0	0	0	0	0
<b>Total</b>	<b>95</b>	<b>2</b>	<b>45</b>	<b>80</b>	<b>3</b>	<b>29</b>	<b>86</b>	<b>1</b>	<b>21</b>	<b>74</b>	<b>3</b>	<b>22</b>	<b>133</b>	<b>2</b>	<b>53</b>

## 5-Year Trend - Seatbelt Not Used Among Drivers by Age

Age Group	2012			2013			2014			2015			2016		
	Drivers	Fatal Drivers	Injured Drivers	Drivers	Fatal Drivers	Injured Drivers	Drivers	Fatal Drivers	Injured Drivers	Drivers	Fatal Drivers	Injured Drivers	Drivers	Fatal Drivers	Injured Drivers
0 - 15	0	0	0	0	0	0	0	0	0	0	0	0	1	0	1
16 - 20	10	0	5	10	0	4	7	0	2	2	1	0	10	0	6
21 - 24	4	2	1	2	0	0	4	0	1	4	0	3	5	0	2
25 - 64	35	0	8	35	1	15	37	1	11	25	3	11	23	0	14
65 +	9	0	5	9	1	4	8	1	5	9	2	1	9	0	5
Unknown	0	0	0	0	0	0	0	0	0	0	0	0	0	0	0
<b>Total</b>	<b>58</b>	<b>2</b>	<b>19</b>	<b>56</b>	<b>2</b>	<b>23</b>	<b>56</b>	<b>2</b>	<b>19</b>	<b>40</b>	<b>6</b>	<b>15</b>	<b>48</b>	<b>0</b>	<b>28</b>

Note: Seatbelt Not Used includes no belts available or no belts used.

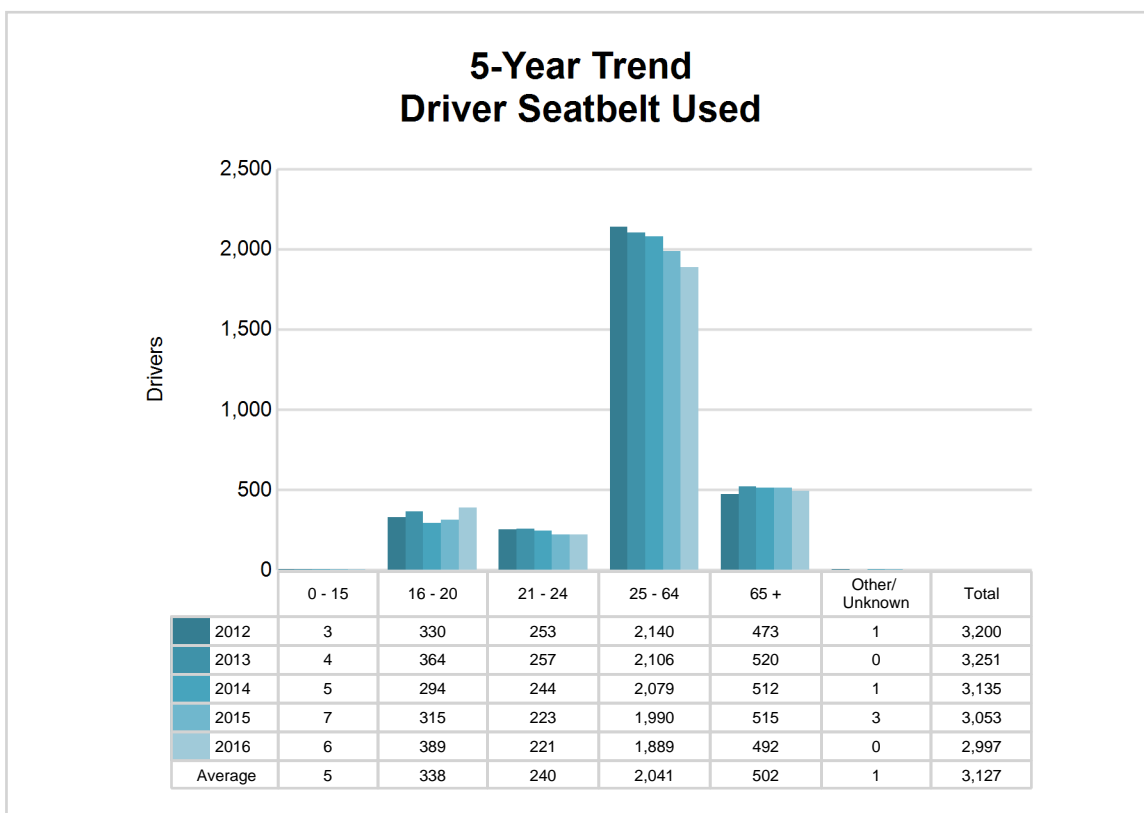


# MSP Post 32 - West Branch (continued)

## 5-Year Trend - Seatbelt Used Among Drivers by Age

Age Group	2012			2013			2014			2015			2016		
	Drivers	Fatal Drivers	Injured Drivers	Drivers	Fatal Drivers	Injured Drivers	Drivers	Fatal Drivers	Injured Drivers	Drivers	Fatal Drivers	Injured Drivers	Drivers	Fatal Drivers	Injured Drivers
0 - 15	3	0	1	4	0	0	5	0	1	7	0	0	6	0	1
16 - 20	330	0	31	364	0	42	294	0	34	315	0	46	389	2	63
21 - 24	253	0	36	257	0	34	244	0	30	223	0	20	221	0	33
25 - 64	2,140	3	193	2,106	1	165	2,079	2	154	1,990	2	177	1,889	2	206
65 +	473	4	58	520	4	56	512	0	60	515	1	50	492	0	67
Unknown	1	0	0	0	0	0	1	0	0	3	0	0	0	0	0
<b>Total</b>	<b>3,200</b>	<b>7</b>	<b>319</b>	<b>3,251</b>	<b>5</b>	<b>297</b>	<b>3,135</b>	<b>2</b>	<b>279</b>	<b>3,053</b>	<b>3</b>	<b>293</b>	<b>2,997</b>	<b>4</b>	<b>370</b>

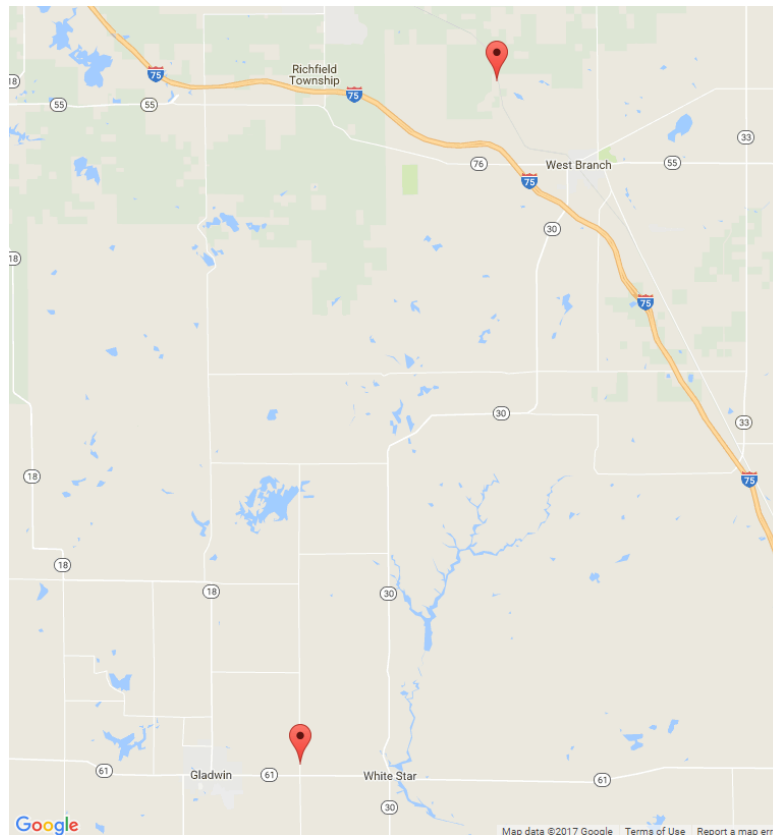
Note: Seatbelt Used includes shoulder belt only used, lap belt only used, both lap and shoulder belts used, and restraint failure.



## 5-Year Trend - Drivers in Crashes by Hazardous Action

Hazardous Action	2012		2013		2014		2015		2016	
	Total Drivers in Crashes	Drivers in Fatal Crashes	Total Drivers in Crashes	Drivers in Fatal Crashes	Total Drivers in Crashes	Drivers in Fatal Crashes	Total Drivers in Crashes	Drivers in Fatal Crashes	Total Drivers in Crashes	Drivers in Fatal Crashes
None	2,121	5	2,182	7	2,105	3	2,091	6	1,746	5
Speed too fast	485	2	537	4	466	3	338	4	489	3
Speed too slow	7	0	4	0	6	0	2	0	3	0
Failed to yield	205	2	172	4	185	0	183	2	229	1
Disregard traffic control	29	1	25	0	36	1	35	0	23	0
Drove wrong way	2	0	2	0	1	0	3	0	2	0
Drove left of center	16	0	9	0	14	0	13	1	23	0
Improper passing	28	1	22	0	17	0	15	0	23	0
Improper lane use	14	0	19	0	31	0	37	0	37	1
Improper turn	19	0	27	0	15	0	21	0	25	0
Improper/no signal	8	0	4	0	6	0	7	0	9	0
Improper backing	44	0	40	0	39	0	41	0	47	0
Unable to stop in assured clear distance	157	0	166	3	188	1	181	1	184	0
Other	94	0	78	1	85	1	88	1	110	0
Unknown	36	4	26	3	36	2	53	3	64	0
Reckless driving	23	1	17	1	23	0	24	0	28	0
Careless/negligent driving	139	1	162	0	144	1	136	3	163	3
Uncoded & errors	24	0	23	1	33	0	32	0	64	0
<b>Total</b>	<b>3,451</b>	<b>17</b>	<b>3,515</b>	<b>24</b>	<b>3,430</b>	<b>12</b>	<b>3,300</b>	<b>21</b>	<b>3,269</b>	<b>13</b>

## MSP Post 32 - West Branch (continued)



The picture above represents all 2016 alcohol-involved fatal crashes in Post 32.

In 2016, there were 132 alcohol-involved crashes in Post 32:

- 2 K - Fatal Crashes
- 13 A - Suspected Serious Injury Crashes
- 27 B - Suspected Minor Injury Crashes
- 20 C - Possible Injury Crashes
- 70 O - Property Damage Only/No Injury Crashes

### Office of Highway Safety Planning

Physical Address:  
7150 Harris Drive  
Dimondale, Michigan 48821

Mailing Address:  
P.O. Box 30634  
Lansing, Michigan 48909

Phone: (517) 284-3112  
Fax: (517) 284-3151

Find us on the web:  
[MichiganTrafficCrashFacts.org](http://MichiganTrafficCrashFacts.org)

