



2016

MTCF
Michigan Traffic
Crash Facts

Michigan Traffic Crash Facts

Reporting Criteria

Please pay particular attention to the wording when interpreting the three levels of data gathered for this report.

Crash

The Crash Level analyzes data related to crash events and returns one result per crash.

Examples: Time, weather, and location.

Units

The Units Level analyzes the experience of the units in the crash and returns one result per vehicle, driver, pedestrian, bicyclist, or train.

Examples: Vehicle type, driver condition, and unit events.

People

The People Level analyzes the experience of the people involved in the crash and returns one result per occupant/person/party.

Examples: Age, injury severity, and seat belt or helmet use.

KABCO Injury Indicator:

K = Killed

A = Suspected Serious Injury

B = Suspected Minor Injury

C = Possible Injury

O = No Injury

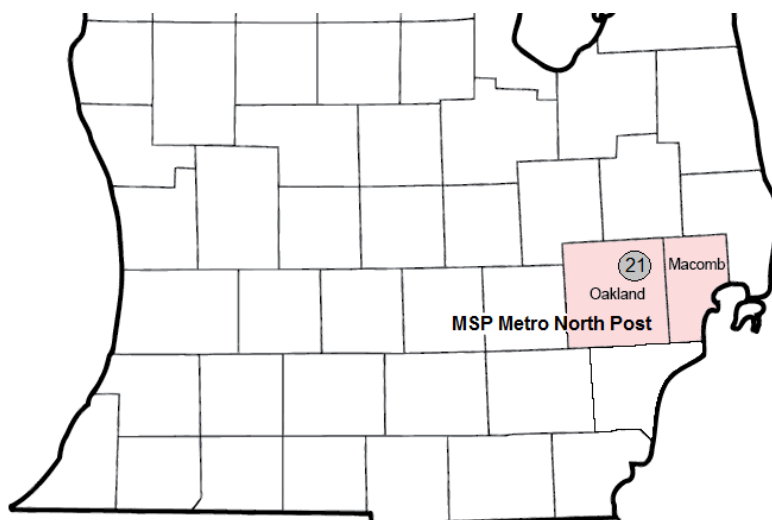
Property Damage Only (PDO)



Michigan State Police (MSP) Post 21 - Metro North

2016 Traffic Crash Data & 2012-2016 5-Year Trends

Post 21 is comprised of Macomb and Oakland counties. Trend tables for this report are based on those counties.



Sources:

The crashes in this report occurred on public roadways in Michigan and resulted in injuries, fatalities, or property damage (with \$1,000 as a reporting threshold). The information was gathered from Michigan Traffic Crash Report Forms (UD-10) submitted by local police departments, sheriff's offices, and the Michigan State Police. Other related information was obtained from the departments of Transportation, State, and Community Health.

This page left intentionally blank

MSP Post 21 - Metro North

- There were 68,071 crashes in Post 21 during 2016. [Page 1]
- There were 143 fatalities in 138 fatal crashes in 2016 in Post 21. [Page 1]
- A total of 18,574 injuries resulted from 13,627 injury crashes. [Page 1]
- There were 54,306 property damage only crashes (no fatalities or injuries). [Page 1]
- December had the highest number of crashes (6,867). [Pages 1-2]
- September had the highest number of fatal crashes (17) and fatalities (17). [Pages 1-2]
- September had the highest number of injury crashes (1,282) and injuries (1,747). [Page 1]
- December had the highest number of property damage only crashes (5,655). [Page 1]
- Of all vehicles involved in fatal crashes, 28 (12.3%) were motorcycles. [Page 1]
- Friday was the day of the week with the highest number of crashes (11,448) and Wednesday had the highest number of fatal crashes (27). [Pages 2-3]
- The 3:00 PM – 5:59 PM time period had the highest number of crashes (19,042). This is true for each year from 2012 to 2016. The 9:00 PM – 11:59 PM time period had the highest number of fatal crashes (30). [Pages 5-6]
- During the period from 2012 to 2016, the highest number of deer crashes occurred in 2015 (2,503). The 6:00 PM – 8:59 PM time period consistently had the highest number of deer-involved crashes during the five-year period. There were no fatal crashes involving deer in 2016. [Pages 7-8]
- Oakland County (62.7%) had the highest number of crashes in Post 21 in 2016, followed by Macomb County (37.3%). [Page 8]
- Oakland County (55.9%) had the highest number of fatalities in Post 21 in 2016, followed by Macomb County (44.1%). [Page 8]
- The highest number of drivers in crashes (132,529) occurred during 2016 and the highest number of drivers coded drinking in crashes (1,816) occurred during 2014 within the five-year period. [Page 9]
- A total of 1,821 crashes involved alcohol in 2016, but 2014 had the highest number of alcohol-involved crashes, with 1,845. [Page 10]
- Alcohol-involved fatal crashes were the highest in 2016 during the five-year period from 2012 to 2016 at 39. [Page 10]
- A total of 564 crashes, 27 fatal crashes (the same count occurred in 2015), and 56 suspected serious injury crashes involved drugs in 2016, all the highest during the five-year period. [Page 11]
- There were 118,865 drivers wearing seatbelts and 541 drivers not wearing seatbelts in crashes in 2016. Of the 541 drivers not wearing seat belts, 14 (2.6%) were killed and 221 (40.9%) were injured. [Pages 14-16]
- The most common hazardous action coded for drivers in 2016 in all crashes was unable to stop in assured clear distance (26,039), while the most common hazardous action coded for drivers in fatal crashes was unknown (33). [Page 17]

Post 21 Experience

In 2016:

There were 132,529 drivers involved in 68,071 motor vehicle crashes in MSP Post 21. Of those crashes, 138 were classified as fatal, resulting in 143 fatalities. An additional 18,574 persons were injured.

Post 21 experienced the highest number of motor vehicle crashes (6,867) in December, the highest number of fatal crashes (17) and the highest number of persons killed (17) in September.

Michigan driver statistics indicate 6.5 percent of licensed drivers in Post 21 were age 16-20, and 10.9 percent of drivers in crashes were also in that age group.

2016 - Crashes and Injuries by Month

Month	Crashes				Persons	
	Total	Fatal	Injury	Property Damage Only (PDO)	Fatalities	Injuries
January	5,617	6	1,024	4,587	6	1,368
February	5,480	8	941	4,531	9	1,257
March	5,301	6	1,043	4,252	7	1,442
April	5,076	14	1,048	4,014	15	1,441
May	5,413	10	1,195	4,208	11	1,670
June	5,672	9	1,237	4,426	9	1,713
July	5,134	13	1,125	3,996	13	1,527
August	5,569	16	1,208	4,345	16	1,660
September	5,924	17	1,282	4,625	17	1,747
October	6,173	14	1,249	4,910	15	1,671
November	5,845	14	1,074	4,757	14	1,474
December	6,867	11	1,201	5,655	11	1,604
Total	68,071	138	13,627	54,306	143	18,574

2016 - Driver Statistics

Age Group	Statewide			Driver Rates	
	2016 Population	Licensed Drivers	Drivers in Crashes	Per 10k Population	Per 10k Licensed
0 - 15	397,511	12,005	160	4.0	133.3
16 - 20	125,810	106,930	14,477	1,150.7	1,353.9
21 - 24	104,882	104,847	12,620	1,203.3	1,203.7
25 - 64	1,144,560	1,116,952	82,509	720.9	738.7
65 +	338,937	300,455	12,627	372.5	420.3
Unknown	0	0	10,136	--	--
Total	2,111,700	1,641,189	132,529	627.6	807.5

2016 - Vehicles in Crashes

Vehicle Type	Motor Vehicles		Fatal Crashes		Injury Crashes	PDO Crashes
	Number of Vehicles	% of Total	Number	% of Total	Number	Number
Passenger car, SUV, van	112,457	84.9	159	69.7	23,852	88,446
Motor home	2,512	1.9	4	1.8	534	1,974
Pickup truck	11,386	8.6	17	7.5	2,172	9,197
Small truck under 10,000 lbs. GVWR	909	0.7	0	0.0	163	746
Motorcycle	540	0.4	28	12.3	379	133
Moped / goped	40	0.0	2	0.9	27	11
Go-cart / golf cart	6	0.0	0	0.0	2	4
Snowmobile	2	0.0	0	0.0	2	0
Off-Road Vehicle - ORV / All-Terrain Vehicle - ATV	13	0.0	0	0.0	10	3
Other	410	0.3	2	0.9	52	356
Truck/bus over 10,000 lbs.	2,448	1.8	11	4.8	397	2,040
Unknown	1,806	1.4	5	2.2	149	1,652
Total	132,529	100.0	228	100.0	27,739	104,562

MSP Post 21 - Metro North (continued)

5-Year Trend - Crashes by Month

Month	2012		2013		2014		2015		2016	
	Total Crashes	Fatal Crashes	Total Crashes	Fatal Crashes	Total Crashes	Fatal Crashes	Total Crashes	Fatal Crashes	Total Crashes	Fatal Crashes
January	5,285	7	5,249	9	7,723	2	6,359	7	5,617	6
February	4,180	6	4,890	8	5,548	7	5,610	6	5,480	8
March	4,008	10	4,398	10	5,122	4	4,753	9	5,301	6
April	4,011	8	4,275	6	3,883	7	4,328	7	5,076	14
May	4,842	11	5,192	6	5,095	8	5,332	12	5,413	10
June	4,778	8	4,944	10	5,113	16	5,237	14	5,672	9
July	4,649	8	4,688	13	4,483	9	5,061	15	5,134	13
August	4,477	14	4,614	8	4,878	7	4,983	9	5,569	16
September	4,262	6	4,914	12	5,371	9	5,486	11	5,924	17
October	5,580	9	5,705	7	6,007	12	5,793	7	6,173	14
November	4,881	12	5,409	10	6,262	9	6,024	9	5,845	14
December	5,835	5	6,220	4	4,937	13	5,739	13	6,867	11
Total	56,788	104	60,498	103	64,422	103	64,705	119	68,071	138

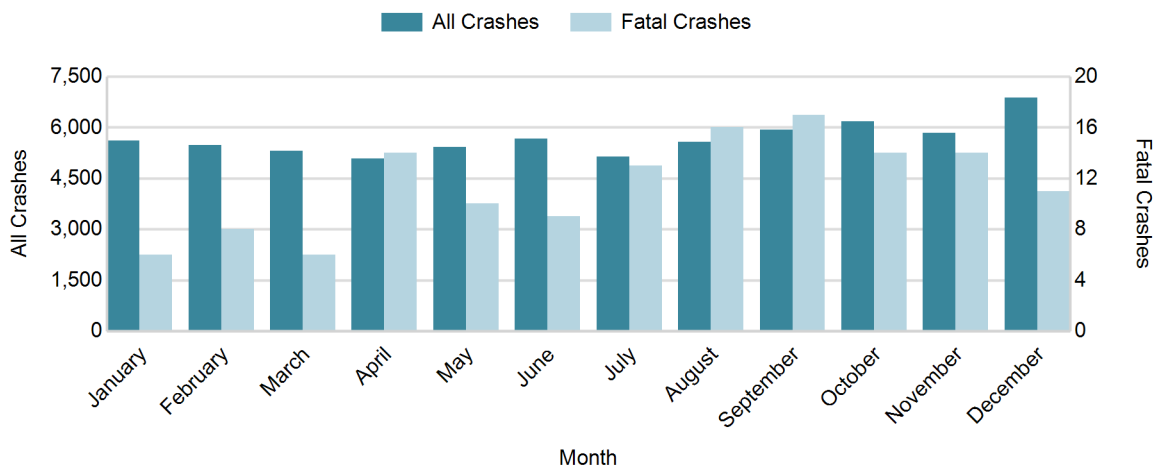
Note: † Indicates that the highest number of total crashes reported in the 5-year period occurred in the same month

5-Year Trend - Crashes by Day of Week

Day	2012		2013		2014		2015		2016	
	Total Crashes	Fatal Crashes	Total Crashes	Fatal Crashes	Total Crashes	Fatal Crashes	Total Crashes	Fatal Crashes	Total Crashes	Fatal Crashes
Monday	8,518	17	8,954	16	9,537	12	9,699	19	9,817	18
Tuesday	8,656	13	9,258	17	10,441	18	10,371	13	10,872	14
Wednesday	8,969	11	9,865	11	11,063	12	10,694	16	11,383	27
Thursday	8,928	14	9,913	14	10,436	17	10,042	15	11,209	19
Friday	9,741	14	9,859	15	10,510	11	10,663	27	11,448	20
Saturday	6,812	22	7,558	20	7,102	16	7,693	19	7,536	23
Sunday	5,164	13	5,091	10	5,333	17	5,543	10	5,806	17
Total	56,788	104	60,498	103	64,422	103	64,705	119	68,071	138

Note: † Indicates that the highest number of total crashes reported in the 5-year period occurred on the same day of the week

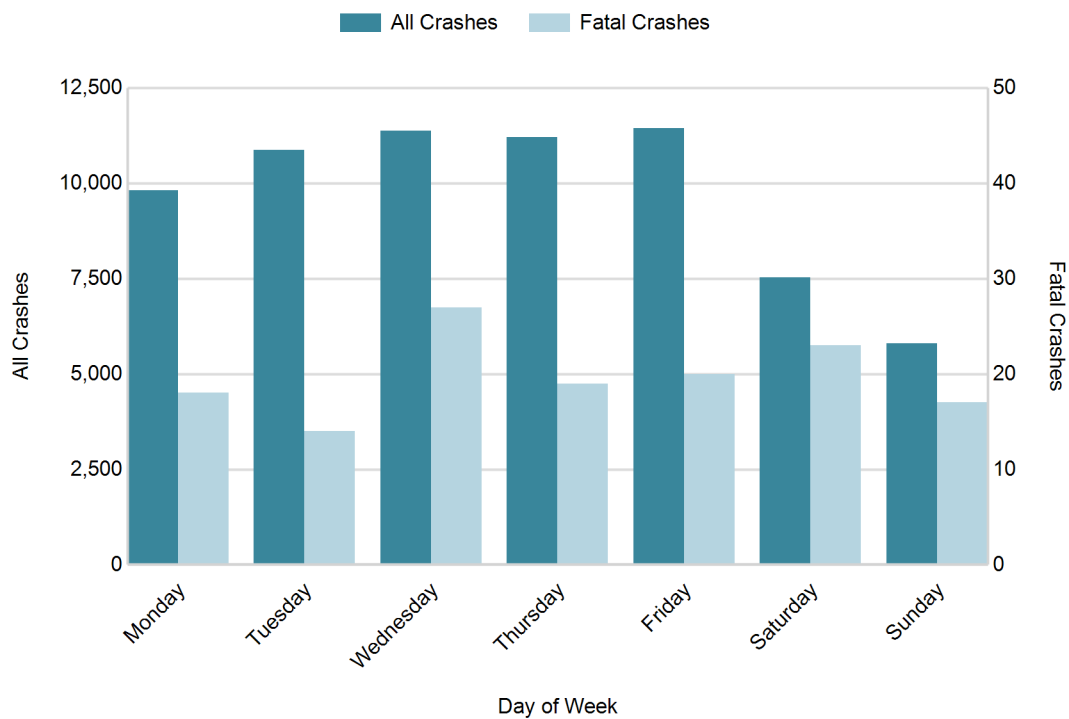
2016 Crashes by Month



2016 - Crashes by Day of Week

Day	All Crashes		Fatal Crashes		Injury Crashes			PDO Crashes
	Number	% of Total	Number	% of Fatal	A	B	C	Number
Monday	9,817	14.4	18	13.0	83	507	1,355	7,854
Tuesday	10,872	16.0	14	10.1	105	532	1,434	8,787
Wednesday	11,383	16.7	27	19.6	96	582	1,595	9,083
Thursday	11,209	16.5	19	13.8	88	562	1,555	8,985
Friday	11,448	16.8	20	14.5	95	603	1,578	9,152
Saturday	7,536	11.1	23	16.7	100	457	1,095	5,861
Sunday	5,806	8.5	17	12.3	63	385	757	4,584
Total	68,071	100.0	138	100.0	630	3,628	9,369	54,306

2016 Day of Week and Severity

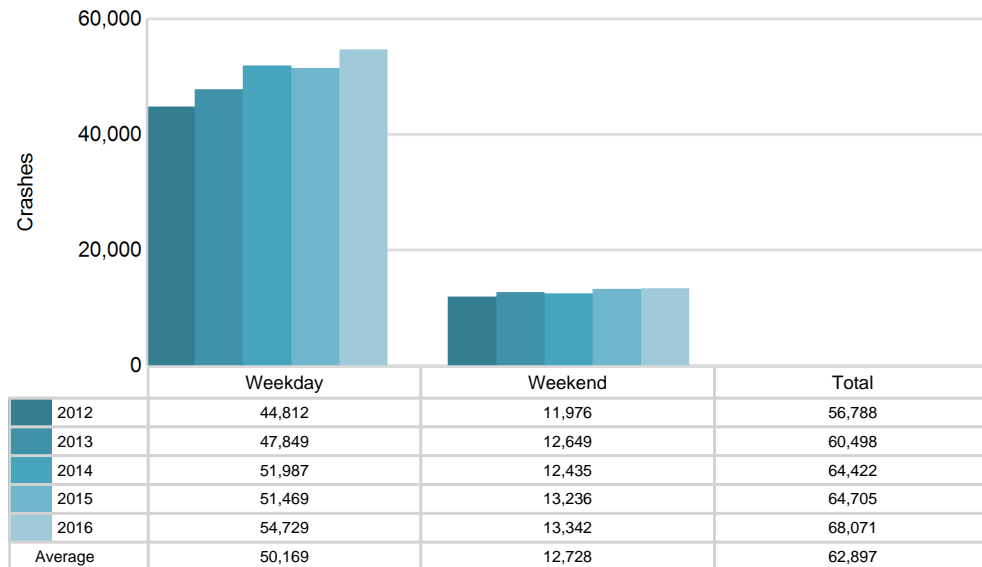


MSP Post 21 - Metro North (continued)

5-Year Trend - Crashes by Weekday and Weekend

Portion of Week	2012		2013		2014		2015		2016	
	Total Crashes	Fatal Crashes	Total Crashes	Fatal Crashes	Total Crashes	Fatal Crashes	Total Crashes	Fatal Crashes	Total Crashes	Fatal Crashes
Weekday	44,812	69	47,849	73	51,987	70	51,469	90	54,729	98
Weekend	11,976	35	12,649	30	12,435	33	13,236	29	13,342	40
Total	56,788	104	60,498	103	64,422	103	64,705	119	68,071	138

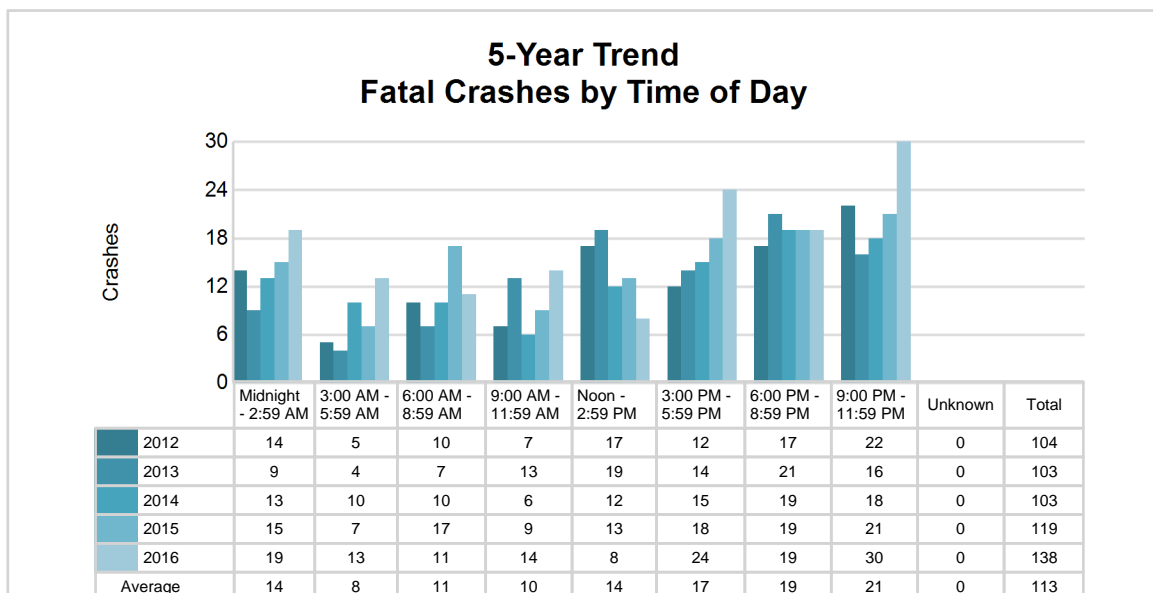
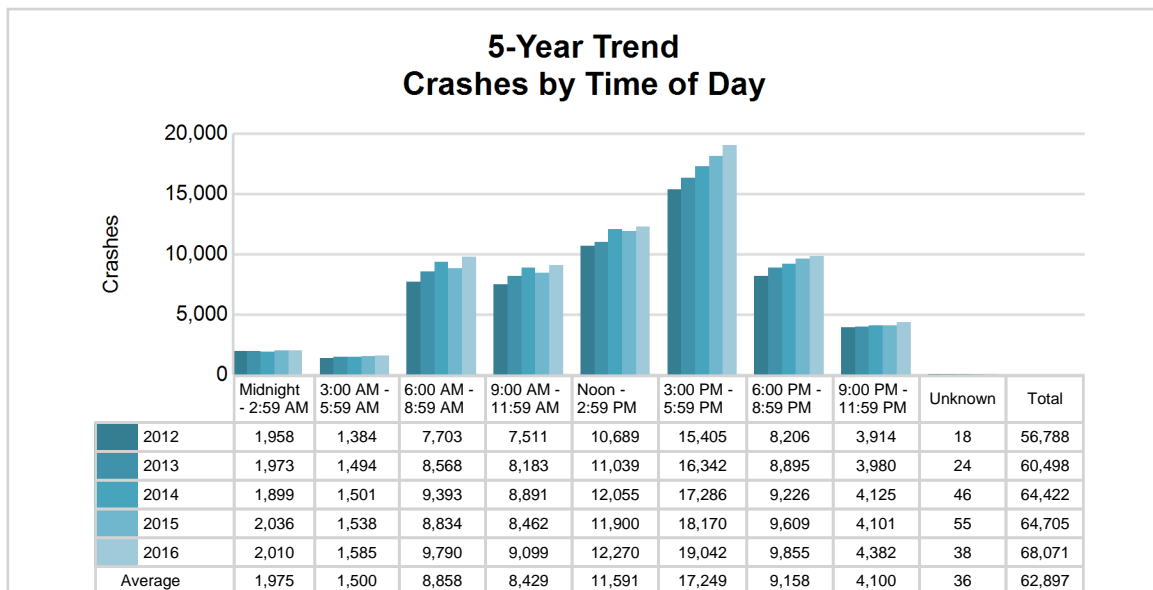
5-Year Crash Trends by Weekday (Monday - Friday) and Weekend (Saturday & Sunday)



5-Year Trend - Crashes by Time of Day

Time of Day	2012		2013		2014		2015		2016	
	Total Crashes	Fatal Crashes	Total Crashes	Fatal Crashes	Total Crashes	Fatal Crashes	Total Crashes	Fatal Crashes	Total Crashes	Fatal Crashes
Midnight - 2:59 AM	1,958	14	1,973	9	1,899	13	2,036	15	2,010	19
3:00 AM - 5:59 AM	1,384	5	1,494	4	1,501	10	1,538	7	1,585	13
6:00 AM - 8:59 AM	7,703	10	8,568	7	9,393	10	8,834	17	9,790	11
9:00 AM - 11:59 AM	7,511	7	8,183	13	8,891	6	8,462	9	9,099	14
Noon - 2:59 PM	10,689	17	11,039	19	12,055	12	11,900	13	12,270	8
3:00 PM - 5:59 PM	15,405 †	12	16,342 †	14	17,286 †	15	18,170 †	18	19,042 †	24
6:00 PM - 8:59 PM	8,206	17	8,895	21	9,226	19	9,609	19	9,855	19
9:00 PM - 11:59 PM	3,914	22	3,980	16	4,125	18	4,101	21	4,382	30
Unknown	18	0	24	0	46	0	55	0	38	0
Total	56,788	104	60,498	103	64,422	103	64,705	119	68,071	138

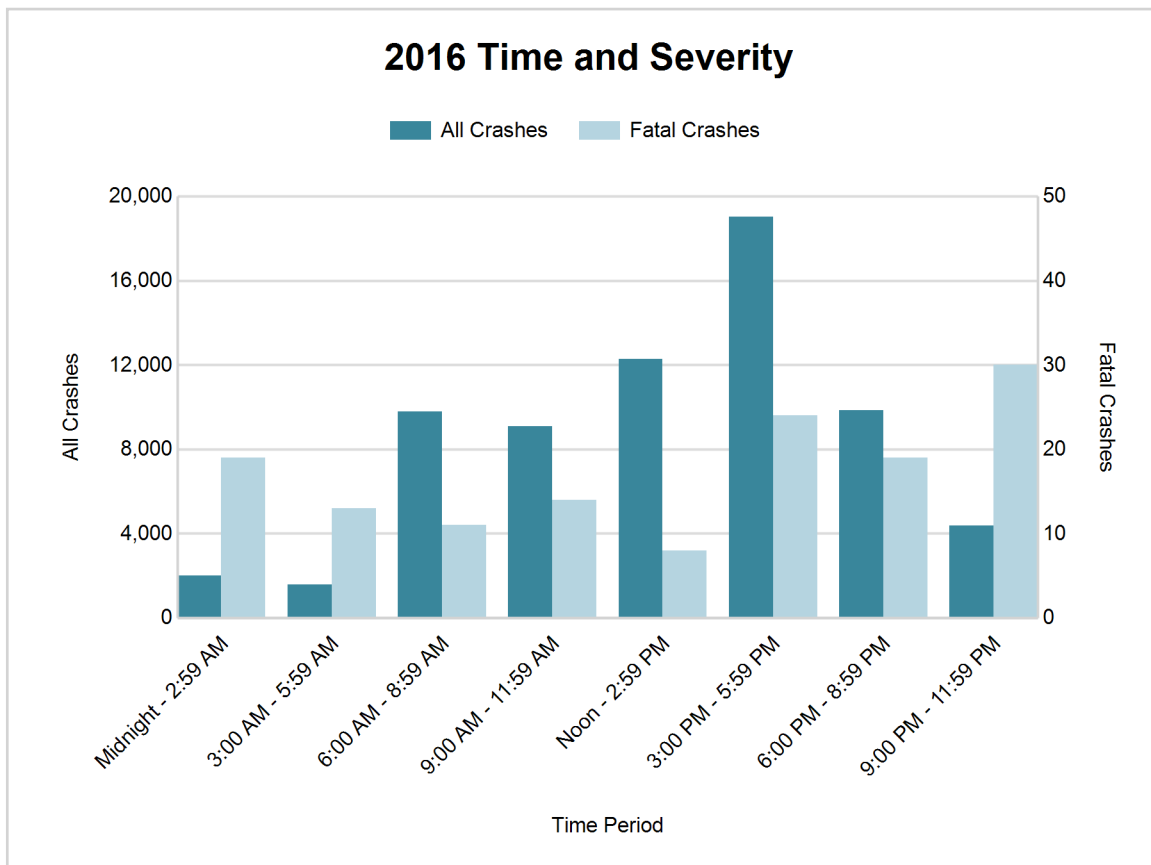
Note: † Indicates that the highest number of total crashes reported in the 5-year period occurred in the same time period



MSP Post 21 - Metro North (continued)

2016 - Time and Severity

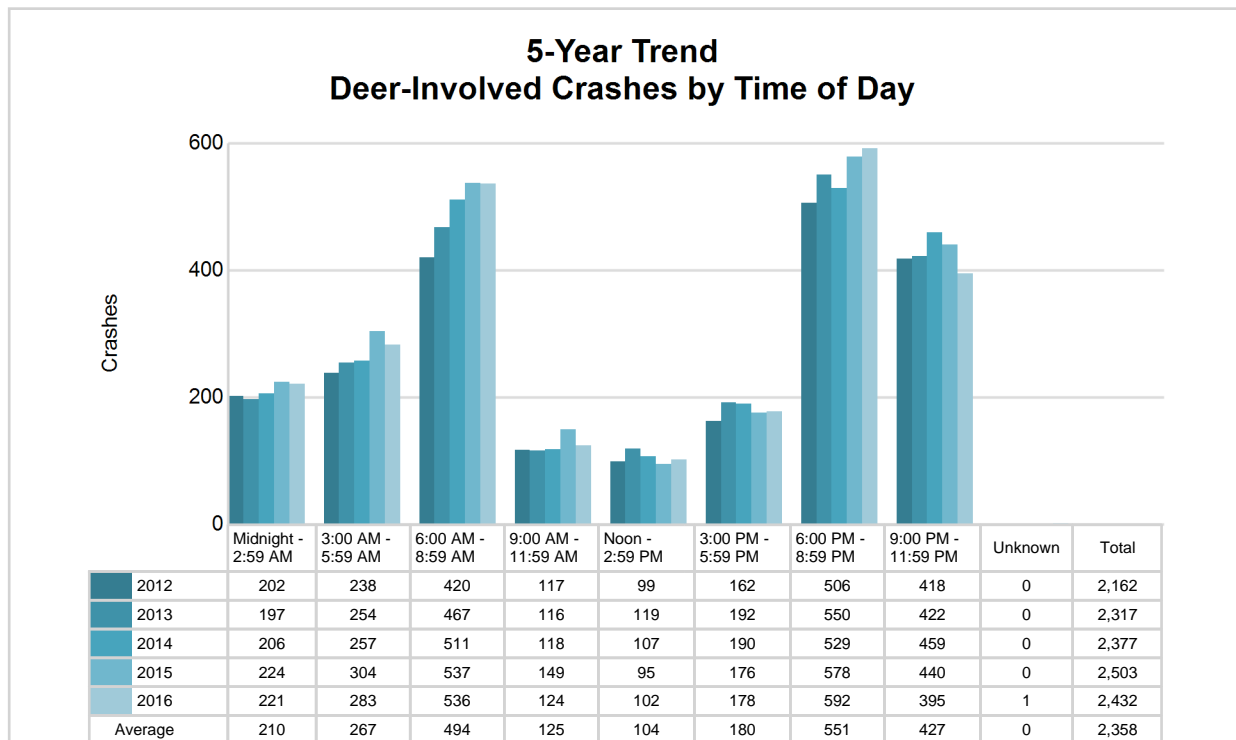
Time of Day	All Crashes		Fatal Crashes		Injury Crashes			PDO Crashes
	Number	% of Total	Number	% of Fatal	A	B	C	Number
Midnight - 2:59 AM	2,010	3.0	19	13.8	47	183	245	1,516
3:00 AM - 5:59 AM	1,585	2.3	13	9.4	19	119	183	1,251
6:00 AM - 8:59 AM	9,790	14.4	11	8.0	75	472	1,337	7,895
9:00 AM - 11:59 AM	9,099	13.4	14	10.1	78	477	1,284	7,246
Noon - 2:59 PM	12,270	18.0	8	5.8	101	653	1,731	9,777
3:00 PM - 5:59 PM	19,042	28.0	24	17.4	142	917	2,672	15,287
6:00 PM - 8:59 PM	9,855	14.5	19	13.8	91	497	1,325	7,923
9:00 PM - 11:59 PM	4,382	6.4	30	21.7	77	310	592	3,373
Unknown	38	0.1	0	0.0	0	0	0	38
Total	68,071	100.0	138	100.0	630	3,628	9,369	54,306



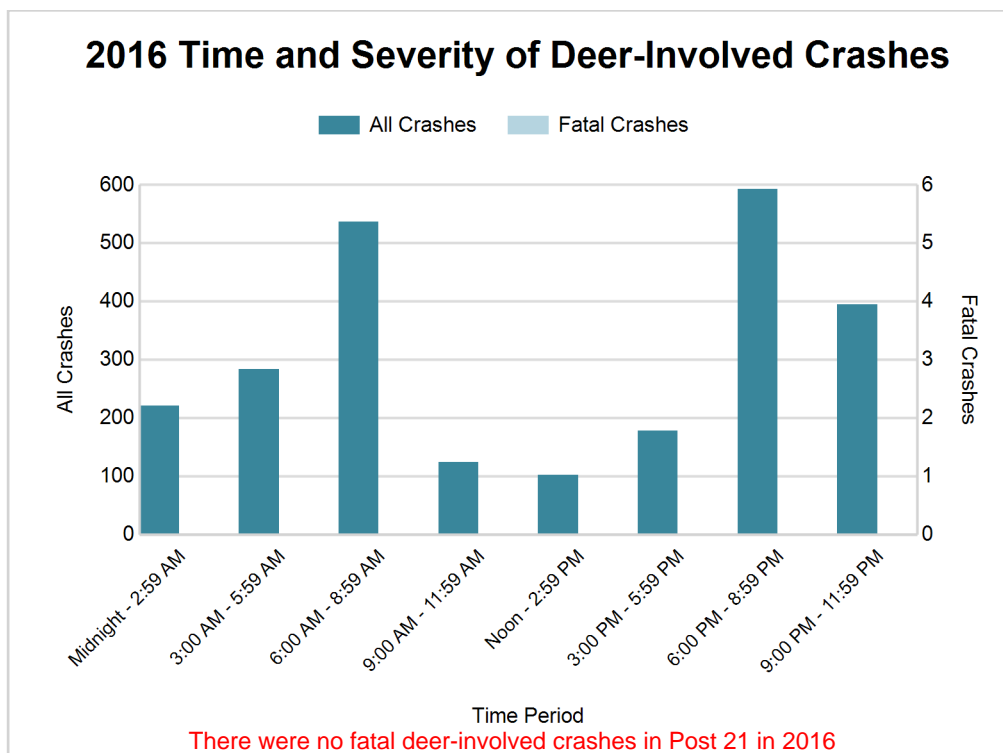
5-Year Trend - Deer-Involved Crashes by Time of Day

Time of Day	2012		2013		2014		2015		2016	
	Total Crashes	Fatal Crashes	Total Crashes	Fatal Crashes	Total Crashes	Fatal Crashes	Total Crashes	Fatal Crashes	Total Crashes	Fatal Crashes
Midnight - 2:59 AM	202	0	197	0	206	0	224	0	221	0
3:00 AM - 5:59 AM	238	0	254	0	257	0	304	0	283	0
6:00 AM - 8:59 AM	420	0	467	0	511	0	537	0	536	0
9:00 AM - 11:59 AM	117	0	116	0	118	0	149	0	124	0
Noon - 2:59 PM	99	0	119	0	107	0	95	0	102	0
3:00 PM - 5:59 PM	162	0	192	0	190	0	176	0	178	0
6:00 PM - 8:59 PM	506 †	0	550 †	0	529 †	0	578 †	0	592 †	0
9:00 PM - 11:59 PM	418	0	422	0	459	0	440	0	395	0
Unknown	0	0	0	0	0	0	0	0	1	0
Total	2,162	0	2,317	0	2,377	0	2,503	0	2,432	0

Note: † Indicates that the highest number of total crashes reported in the 5-year period occurred in the same time period



MSP Post 21 - Metro North (continued)



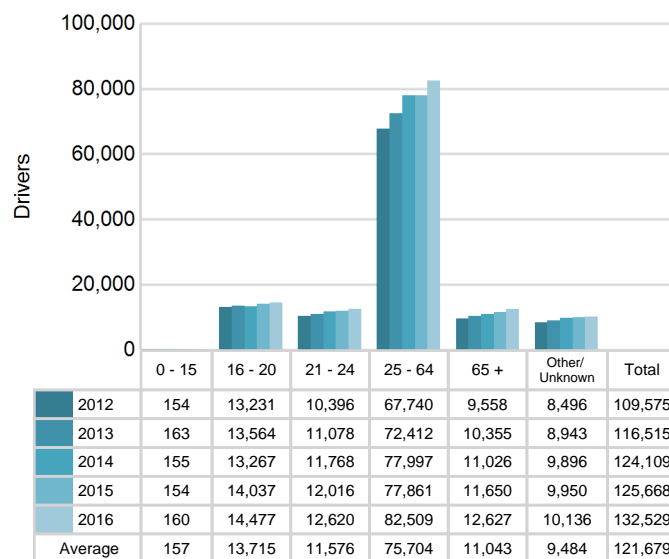
2016 - Reported Motor Vehicle Crashes by County

County	Crashes											Persons	
	Total	Fatal	Injury	Property Damage	Inter-state	US Route	State Route	Local Street	Alcohol-Involved	Drug-Involved	Deer-Involved	Fatalities	Injuries
Macomb	25,411	60	5,409	19,942	2,668	0	6,858	15,870	733	272	585	63	7,404
Oakland	42,660	78	8,218	34,364	7,276	2,370	7,254	25,699	1,088	292	1,847	80	11,170
Total	68,071	138	13,627	54,306	9,944	2,370	14,112	41,569	1,821	564	2,432	143	18,574

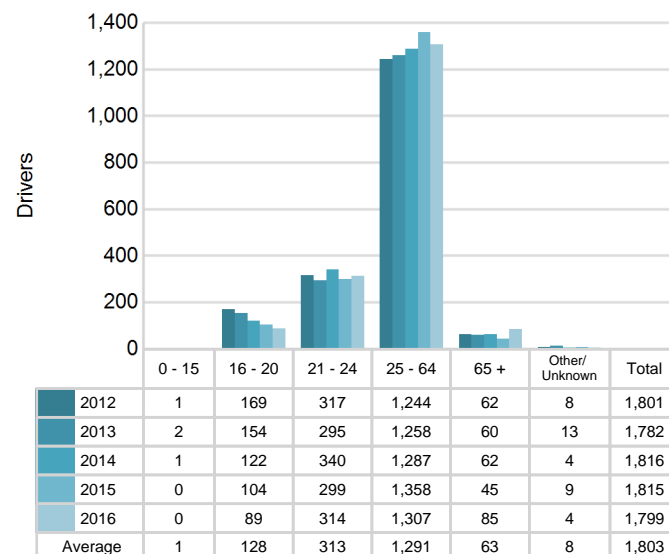
5-Year Trend - Drivers in Crashes Coded Drinking by Driver Age

Driver Age	2012		2013		2014		2015		2016	
	Total Drivers in Crashes	Total Drivers Coded Drinking	Total Drivers in Crashes	Total Drivers Coded Drinking	Total Drivers in Crashes	Total Drivers Coded Drinking	Total Drivers in Crashes	Total Drivers Coded Drinking	Total Drivers in Crashes	Total Drivers Coded Drinking
0 - 15	154	1	163	2	155	1	154	0	160	0
16 - 20	13,231	169	13,564	154	13,267	122	14,037	104	14,477	89
21 - 24	10,396	317	11,078	295	11,768	340	12,016	299	12,620	314
25 - 64	67,740	1,244	72,412	1,258	77,997	1,287	77,861	1,358	82,509	1,307
65 +	9,558	62	10,355	60	11,026	62	11,650	45	12,627	85
Unknown	8,496	8	8,943	13	9,896	4	9,950	9	10,136	4
Total	109,575	1,801	116,515	1,782	124,109	1,816	125,668	1,815	132,529	1,799

5-Year Trend Total Drivers in Crashes by Age



5-Year Trend Total Drivers Coded Drinking by Age



MSP Post 21 - Metro North (continued)

2016 - Bodily Alcohol Concentration (BAC) Results Among All Vehicle Drivers in Alcohol-Involved Crashes by Age

Age Group	Drivers				BAC Result Range for Drivers Coded Drinking				
	Total Drivers in Alcohol-Involved Crashes	Total Drivers Tested in all Crashes	Total Drivers Coded Drinking, Tested	Total Drivers Coded Drinking	BAC = 0.00	BAC 0.01 g/dL to 0.07 g/dL	BAC 0.08 g/dL to 0.16 g/dL	BAC 0.17 g/dL and Above	BAC Not Reported
0 - 15	4	0	0	0	0	0	0	0	0
16 - 20	181	111	75	89	5	9	21	20	34
21 - 24	402	331	282	314	9	29	98	86	92
25 - 64	1,995	1,357	1,127	1,307	29	93	298	432	455
65 +	173	102	74	85	1	16	22	22	24
Unknown	288	5	0	4	0	0	0	0	4
Total	3,043	1,906	1,558	1,799	44	147	439	560	609

Notes: BAC measured in grams (g) per deciliter (dL).

BAC may not be reported if drivers are not tested or if the results are not available immediately (as in the case of a blood test).

A driver may be coded by the officer as drinking even though no test is administered.

Alcohol-Involved Crashes

In 2016, there were 3,043 drivers in alcohol-involved crashes; 1,799 (59.1%) of those drivers were coded as had-been-drinking by the officer on the crash form.

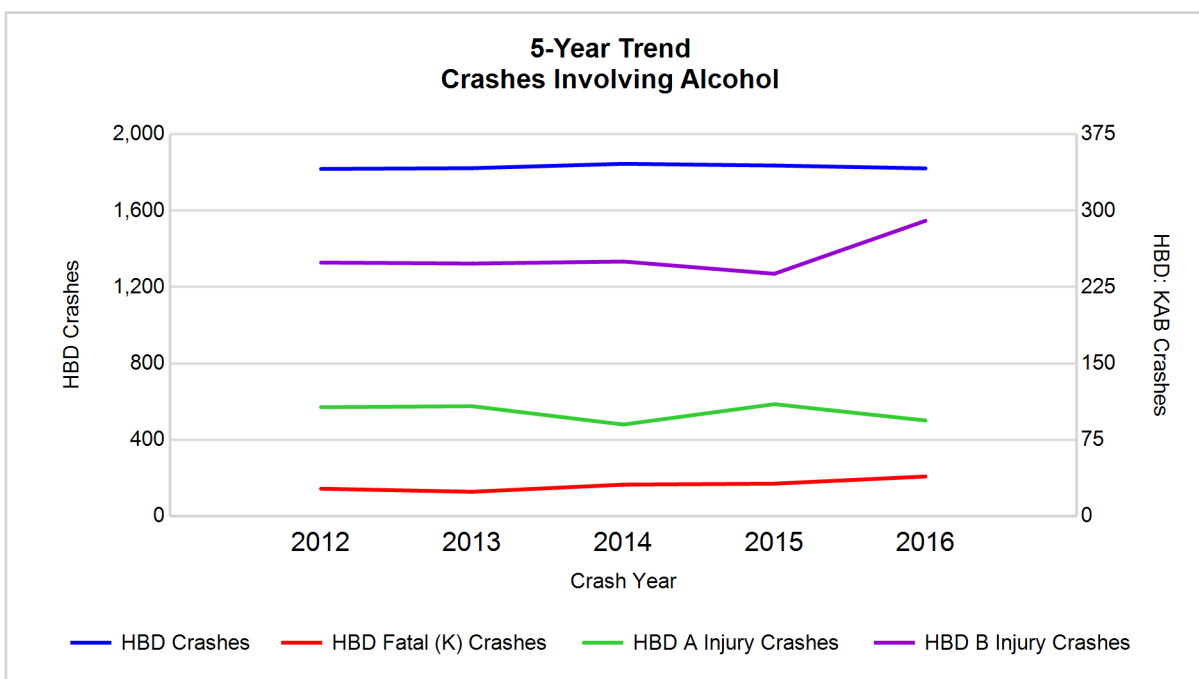
- 999 (55.5%) of the 1,799 drivers had a blood alcohol concentration (BAC) of 0.08 g/dL (grams per deciliter) or greater, and 560 (56.1%) of the 999 drivers had a BAC at or above 0.17 g/dL.
- 1,558 (86.6%) of the 1,799 drivers were coded as had-been-drinking and were tested for alcohol consumption.

5-Year Trend - Crashes Involving Alcohol

Year	All Crashes	HBD Crashes	% HBD	Fatal Crashes	HBD Fatal Crashes	% HBD	A Injury Crashes	HBD A Injury Crashes	% HBD	B Injury Crashes	HBD B Injury Crashes	% HBD
2012	56,788	1,818	3.2	104	27	26.0	742	107	14.4	2,984	249	8.3
2013	60,498	1,822	3.0	103	24	23.3	718	108	15.0	3,021	248	8.2
2014	64,422	1,845	2.9	103	31	30.1	671	90	13.4	3,135	250	8.0
2015	64,705	1,836	2.8	119	32	26.9	637	110	17.3	3,090	238	7.7
2016	68,071**	1,821	2.7*	138**	39**	28.3	630*	94	14.9	3,628**	290**	8.0

Note: * Indicates that the most recent year is the lowest number or percentage reported in the 5-year period in that column

** Indicates that the most recent year is the highest number or percentage reported in the 5-year period in that column



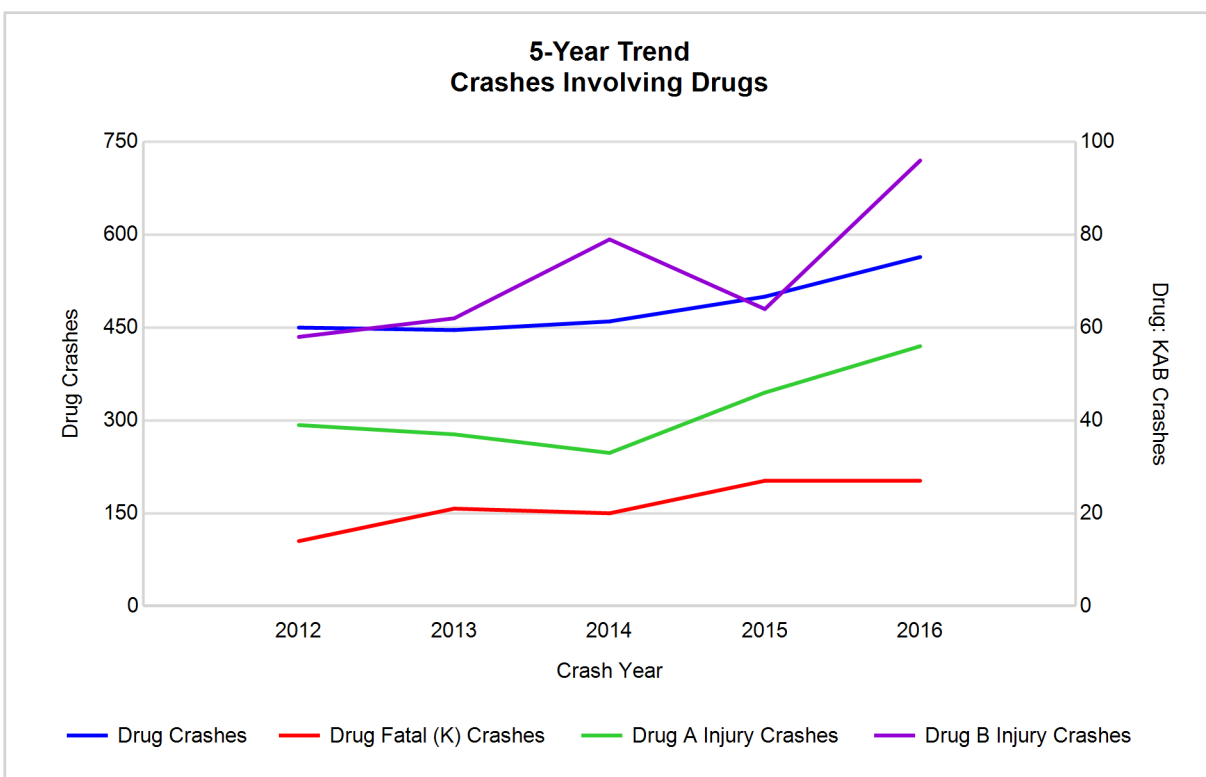
Note: Had-Been-Drinking (HBD)

5-Year Trend - Crashes Involving Drugs

Year	All Crashes	Drug Crashes	% Drug	Fatal Crashes	Drug Fatal Crashes	% Drug	A Injury Crashes	Drug A Injury Crashes	% Drug	B Injury Crashes	Drug B Injury Crashes	% Drug
2012	56,788	450	0.8	104	14	13.5	742	39	5.3	2,984	58	1.9
2013	60,498	446	0.7	103	21	20.4	718	37	5.2	3,021	62	2.1
2014	64,422	460	0.7	103	20	19.4	671	33	4.9	3,135	79	2.5
2015	64,705	500	0.8	119	27	22.7	637	46	7.2	3,090	64	2.1
2016	68,071**	564**	0.8	138**	27	19.6	630*	56**	8.9**	3,628**	96**	2.6**

Note: * Indicates that the most recent year is the lowest number or percentage reported in the 5-year period in that column

** Indicates that the most recent year is the highest number or percentage reported in the 5-year period in that column



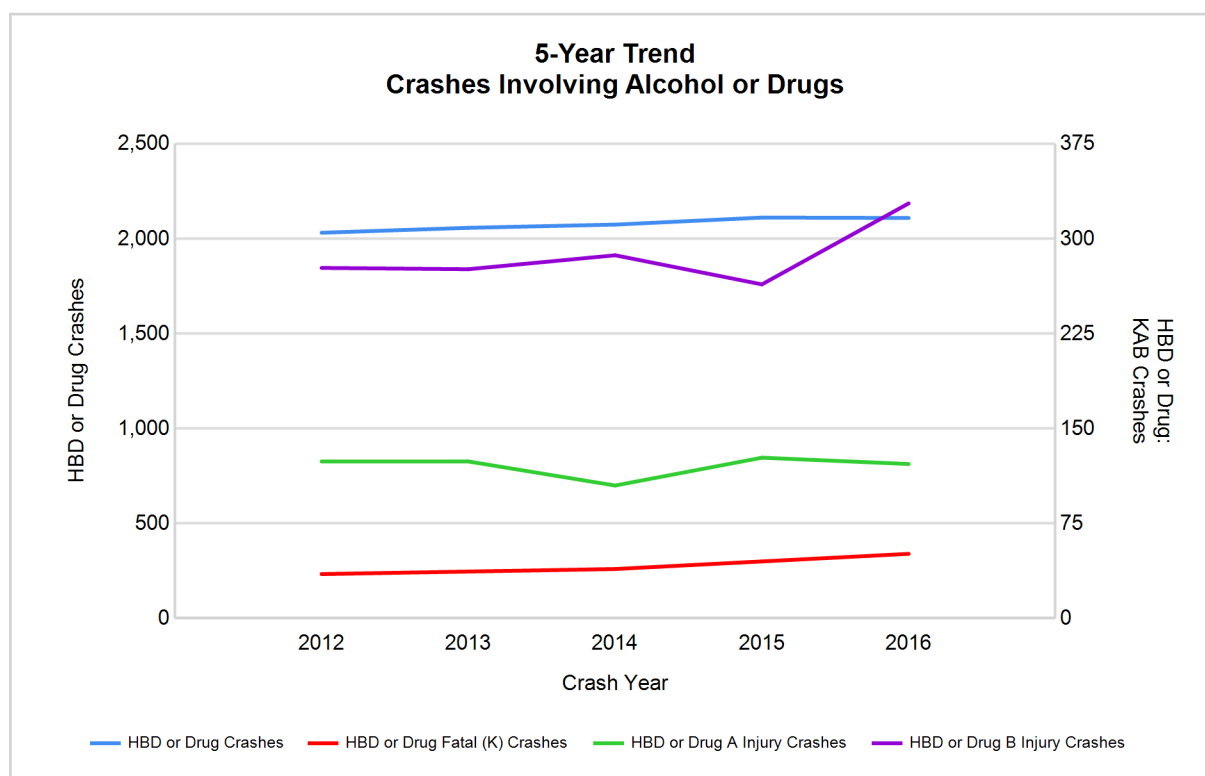
MSP Post 21 - Metro North (continued)

5-Year Trend - Crashes Involving Alcohol or Drugs

Year	All Crashes	HBD or Drug Crashes	% HBD or Drug	Fatal Crashes	HBD or Drug Fatal Crashes	% HBD or Drug	A Injury Crashes	HBD or Drug A Injury Crashes	% HBD or Drug	B Injury Crashes	HBD or Drug B Injury Crashes	% HBD or Drug
2012	56,788	2,032	3.6	104	35	33.7	742	124	16.7	2,984	277	9.3
2013	60,498	2,058	3.4	103	37	35.9	718	124	17.3	3,021	276	9.1
2014	64,422	2,075	3.2	103	39	37.9	671	105	15.6	3,135	287	9.2
2015	64,705	2,112	3.3	119	45	37.8	637	127	19.9	3,090	264	8.5
2016	68,071**	2,110	3.1*	138**	51**	37.0	630*	122	19.4	3,628**	328**	9.0

Note: * Indicates that the most recent year is the lowest number or percentage reported in the 5-year period in that column

** Indicates that the most recent year is the highest number or percentage reported in the 5-year period in that column



Note: Had-Been-Drinking (HBD)

MSP Post 21 - Metro North (continued)

13

2016 - Restraints Worn Among Vehicle Drivers and Injured Passengers by Vehicle Type

Vehicle Type	Total Occupants			Fatalities			A - Suspected Serious			B - Suspected Minor			C - Possible Injury			No Injury		
	Total	Used Restraint	%	Total	Used Restraint	%	Total	Used Restraint	%	Total	Used Restraint	%	Total	Used Restraint	%	Total	Used Restraint	%
Passenger car, SUV, van	115,900	106,185	91.6	67	39	58.2	535	444	83.0	3,615	3,354	92.8	11,731	11,344	96.7	92,829	90,980	98.0
Motor home	2,617	2,381	91.0	0	0	0.0	7	6	85.7	75	68	90.7	286	269	94.1	2,083	2,037	97.8
Pickup truck	11,578	10,335	89.3	6	3	50.0	39	28	71.8	253	220	87.0	724	704	97.2	9,603	9,380	97.7
Small truck under 10,000 lbs. GVWR	926	795	85.9	0	0	0.0	3	1	33.3	12	9	75.0	55	51	92.7	759	734	96.7
Motorcycle	565	399	70.6	23	15	65.2	86	55	64.0	176	133	75.6	132	97	73.5	133	98	73.7
Moped / goped	40	13	32.5	2	0	0.0	1	0	0.0	17	5	29.4	9	4	44.4	8	4	50.0
Go-cart / golf cart	7	1	14.3	0	0	0.0	0	0	0.0	1	0	0.0	1	0	0.0	4	1	25.0
Snowmobile	2	1	50.0	0	0	0.0	2	1	50.0	0	0	0.0	0	0	0.0	0	0	0.0
Off-Road Vehicle - ORV / All-Terrain Vehicle - ATV	13	4	30.8	0	0	0.0	3	0	0.0	6	2	33.3	1	1	100.0	2	1	50.0
Other	412	271	65.8	0	0	0.0	3	1	33.3	7	6	85.7	15	13	86.7	285	251	88.1
Truck/bus over 10,000 lbs.	2,499	2,230	89.2	2	2	100.0	1	1	100.0	18	13	72.2	94	51	54.3	2,234	2,162	96.8
Unknown	1,810	25	1.4	0	0	0.0	0	0	0.0	1	0	0.0	2	2	100.0	52	19	36.5
Total	136,369	122,640	89.9	100	59	59.0	680	537	79.0	4,181	3,810	91.1	13,050	12,536	96.1	107,992	105,667	97.8

Note: Restraint Use includes shoulder belt only used, lap belt only used, both lap and shoulder belts used, child restraint used, restraint failure, and helmet worn.

2016 - Restraints Worn Among Vehicle Drivers and Injured Passengers by Age

Age Group	Total Occupants			Fatalities			A - Suspected Serious			B - Suspected Minor			C - Possible Injury			No Injury		
	Total	Used Restraint	%	Total	Used Restraint	%	Total	Used Restraint	%	Total	Used Restraint	%	Total	Used Restraint	%	Total	Used Restraint	%
0 - 15	1,177	1,049	89.1	1	0	0.0	25	18	72.0	183	150	82.0	817	742	90.8	149	139	93.3
16 - 20	15,028	14,570	97.0	6	2	33.3	69	50	72.5	525	468	89.1	1,358	1,282	94.4	13,017	12,765	98.1
21 - 24	12,933	12,473	96.4	12	5	41.7	78	56	71.8	505	439	86.9	1,197	1,129	94.3	11,102	10,841	97.6
25 - 64	84,018	81,672	97.2	51	31	60.8	420	332	79.0	2,417	2,224	92.0	8,172	7,914	96.8	72,674	71,162	97.9
65 +	13,069	12,830	98.2	30	21	70.0	88	81	92.0	551	529	96.0	1,500	1,468	97.9	10,875	10,730	98.7
Unknown	10,144	46	0.5	0	0	0.0	0	0	0.0	0	0	0.0	6	1	16.7	175	30	17.1
Total	136,369	122,640	89.9	100	59	59.0	680	537	79.0	4,181	3,810	91.1	13,050	12,536	96.1	107,992	105,667	97.8

Note: Restraint Use includes shoulder belt only used, lap belt only used, both lap and shoulder belts used, child restraint used, restraint failure, and helmet worn.

MSP Post 21 - Metro North (continued)

5-Year Trend - Restraint Use Among Drivers

Restraint Use	2012			2013			2014			2015			2016		
	Drivers	Fatal Drivers	Injured Drivers	Drivers	Fatal Drivers	Injured Drivers	Drivers	Fatal Drivers	Injured Drivers	Drivers	Fatal Drivers	Injured Drivers	Drivers	Fatal Drivers	Injured Drivers
No belts available	237	0	31	114	1	17	82	1	13	178	1	26	97	0	19
Shoulder belt only used	37	0	8	60	0	5	21	0	2	20	0	3	159	0	25
Lap belt only used	67	0	10	96	0	14	80	0	10	121	0	20	85	0	11
Both lap & shoulder belts used	98,046	36	11,228	104,670	32	11,694	111,383	30	12,198	112,250	34	12,588	118,616	32	13,211
No belts used	510	14	236	450	16	221	409	14	184	434	22	185	444	14	202
Child restraint used	0	0	0	0	0	0	1	0	0	0	0	0	4	0	1
Child restraint not used, unavailable or improper use	1	0	0	0	0	0	1	0	0	3	0	1	1	0	0
Restraint failure	4	0	1	4	0	3	3	0	1	3	0	0	5	0	0
Restraint use unknown	8,971	3	201	9,388	8	201	10,275	5	194	9,800	6	285	10,572	8	243
Helmet worn	424	7	320	394	13	287	330	8	243	372	9	278	399	15	280
Helmet not worn	139	7	104	129	6	103	136	5	102	158	5	121	157	7	116
Helmet use unknown	21	1	12	15	0	8	22	2	12	25	0	12	28	3	12
Uncoded & errors	1,118	0	1	1,195	0	0	1,366	0	1	2,304	0	2	1,962	0	0
Total	109,575	68	12,152	116,515	76	12,553	124,109	65	12,960	125,668	77	13,521	132,529	79	14,120

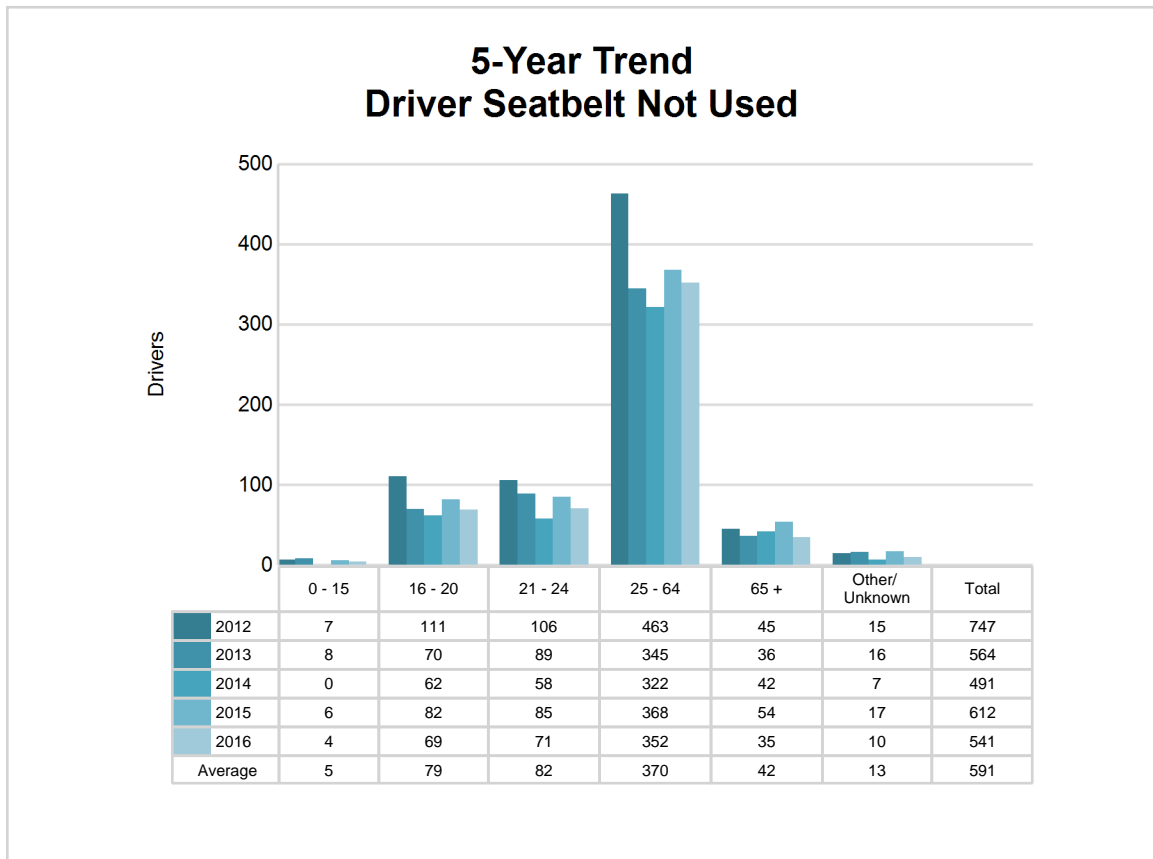
5-Year Trend - Restraint Use Among Drivers Coded Drinking

Restraint Use	2012			2013			2014			2015			2016		
	Drivers	Fatal Drivers	Injured Drivers	Drivers	Fatal Drivers	Injured Drivers	Drivers	Fatal Drivers	Injured Drivers	Drivers	Fatal Drivers	Injured Drivers	Drivers	Fatal Drivers	Injured Drivers
No belts available	6	0	1	10	0	7	1	0	0	7	0	2	1	0	1
Shoulder belt only used	0	0	0	2	0	0	1	0	1	1	0	1	4	0	1
Lap belt only used	0	0	0	0	0	0	1	0	0	0	0	0	1	0	1
Both lap & shoulder belts used	1,406	7	324	1,427	4	323	1,481	2	328	1,444	5	300	1,442	5	361
No belts used	114	5	66	88	3	57	81	6	53	86	7	52	90	5	54
Child restraint used	0	0	0	0	0	0	0	0	0	0	0	0	0	0	0
Child restraint not used, unavailable or improper use	0	0	0	0	0	0	0	0	0	0	0	0	0	0	0
Restraint failure	0	0	0	1	0	1	0	0	0	0	0	0	0	0	0
Restraint use unknown	238	0	68	232	2	67	222	1	50	246	3	72	226	3	54
Helmet worn	20	2	14	8	0	7	13	2	9	15	1	11	17	2	14
Helmet not worn	13	2	10	12	1	10	15	1	12	14	1	11	16	3	13
Helmet use unknown	3	0	3	2	0	1	1	0	1	1	0	0	2	1	1
Uncoded & errors	1	0	0	0	0	0	0	0	0	1	0	0	0	0	0
Total	1,801	16	486	1,782	10	473	1,816	12	454	1,815	17	449	1,799	19	500

5-Year Trend - Seatbelt Not Used Among Drivers by Age

Age Group	2012			2013			2014			2015			2016		
	Drivers	Fatal Drivers	Injured Drivers	Drivers	Fatal Drivers	Injured Drivers	Drivers	Fatal Drivers	Injured Drivers	Drivers	Fatal Drivers	Injured Drivers	Drivers	Fatal Drivers	Injured Drivers
0 - 15	7	0	2	8	0	2	0	0	0	6	0	0	4	0	1
16 - 20	111	2	39	70	2	34	62	0	27	82	3	29	69	1	37
21 - 24	106	1	52	89	3	51	58	2	22	85	4	37	71	4	44
25 - 64	463	8	155	345	10	135	322	9	132	368	14	124	352	6	125
65 +	45	3	18	36	2	15	42	4	16	54	2	21	35	3	14
Unknown	15	0	1	16	0	1	7	0	0	17	0	0	10	0	0
Total	747	14	267	564	17	238	491	15	197	612	23	211	541	14	221

Note: Seatbelt Not Used includes no belts available or no belts used.

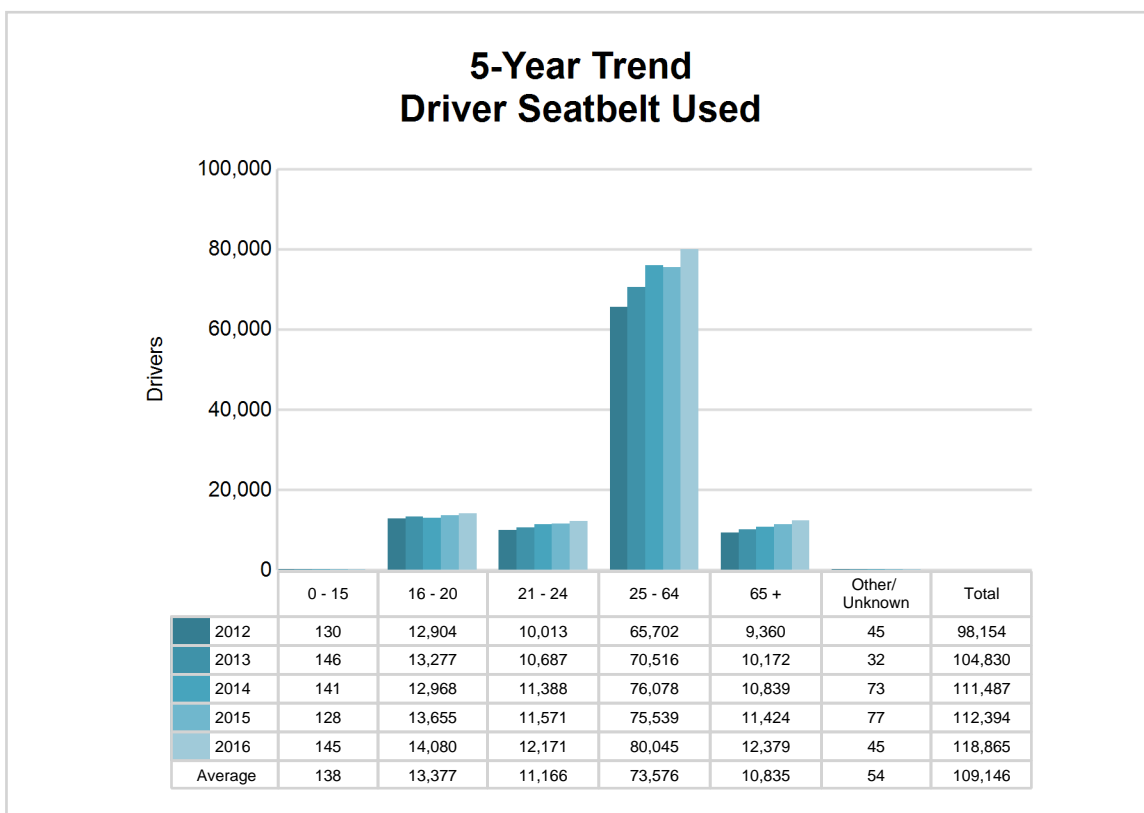


MSP Post 21 - Metro North (continued)

5-Year Trend - Seatbelt Used Among Drivers by Age

Age Group	2012			2013			2014			2015			2016		
	Drivers	Fatal Drivers	Injured Drivers	Drivers	Fatal Drivers	Injured Drivers	Drivers	Fatal Drivers	Injured Drivers	Drivers	Fatal Drivers	Injured Drivers	Drivers	Fatal Drivers	Injured Drivers
0 - 15	130	0	13	146	0	7	141	0	14	128	0	16	145	0	7
16 - 20	12,904	4	1,299	13,277	1	1,259	12,968	0	1,200	13,655	3	1,308	14,080	1	1,320
21 - 24	10,013	4	1,127	10,687	1	1,157	11,388	2	1,222	11,571	2	1,213	12,171	2	1,335
25 - 64	65,702	21	7,547	70,516	20	7,920	76,078	17	8,423	75,539	17	8,524	80,045	18	8,940
65 +	9,360	7	1,258	10,172	10	1,370	10,839	11	1,349	11,424	12	1,550	12,379	11	1,645
Unknown	45	0	3	32	0	3	73	0	3	77	0	0	45	0	0
Total	98,154	36	11,247	104,830	32	11,716	111,487	30	12,211	112,394	34	12,611	118,865	32	13,247

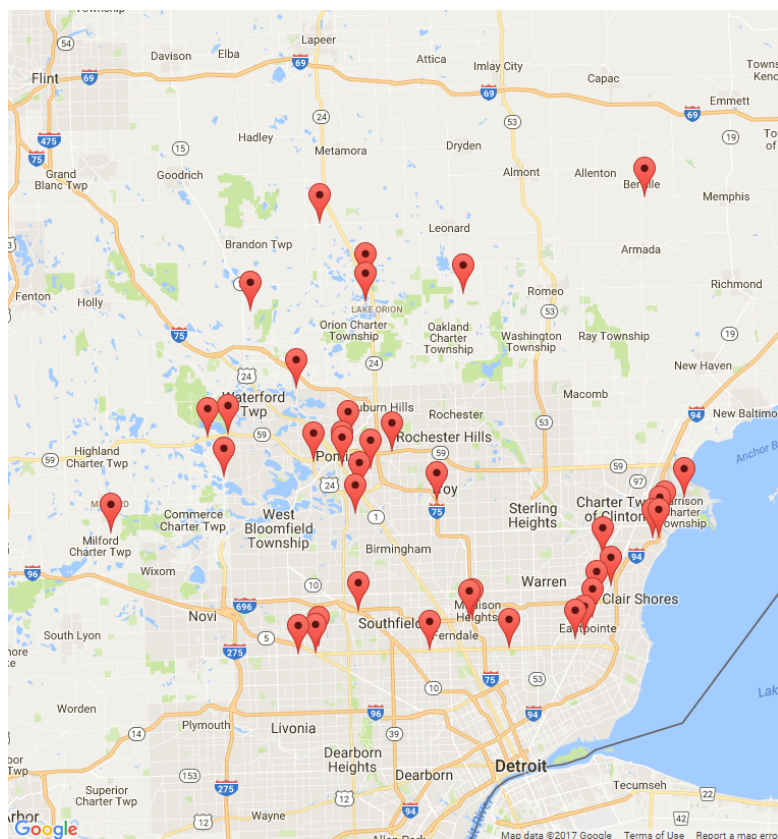
Note: Seatbelt Used includes shoulder belt only used, lap belt only used, both lap and shoulder belts used, and restraint failure.



5-Year Trend - Drivers in Crashes by Hazardous Action

Hazardous Action	2012		2013		2014		2015		2016	
	Total Drivers in Crashes	Drivers in Fatal Crashes	Total Drivers in Crashes	Drivers in Fatal Crashes	Total Drivers in Crashes	Drivers in Fatal Crashes	Total Drivers in Crashes	Drivers in Fatal Crashes	Total Drivers in Crashes	Drivers in Fatal Crashes
None	51,900	83	55,417	86	58,778	71	60,997	97	63,942	105
Speed too fast	3,358	10	3,925	13	4,670	9	3,421	10	3,761	17
Speed too slow	18	0	24	0	18	0	29	0	20	0
Failed to yield	10,571	10	11,257	18	11,532	7	11,982	14	12,584	11
Disregard traffic control	1,866	15	1,853	3	1,886	7	1,994	10	2,179	12
Drove wrong way	54	0	39	0	61	2	62	0	71	1
Drove left of center	509	8	484	5	596	9	534	7	571	9
Improper passing	328	0	387	0	459	2	452	1	483	1
Improper lane use	2,371	1	2,763	0	2,934	0	3,269	3	3,656	0
Improper turn	814	0	838	1	956	1	1,105	1	1,162	1
Improper/no signal	89	0	118	0	91	0	95	0	79	0
Improper backing	1,456	0	1,484	0	1,647	2	1,642	0	1,743	0
Unable to stop in assured clear distance	20,898	9	22,063	6	23,388	4	24,392	7	26,039	12
Other	4,082	9	4,045	10	4,597	10	4,232	15	4,221	13
Unknown	5,847	18	5,975	19	6,451	22	5,920	13	6,364	33
Reckless driving	387	6	391	10	373	5	393	7	409	4
Careless/negligent driving	2,331	8	2,499	8	2,441	11	2,756	13	2,796	8
Uncoded & errors	2,696	2	2,953	2	3,231	5	2,393	1	2,449	1
Total	109,575	179	116,515	181	124,109	167	125,668	199	132,529	228

MSP Post 21 - Metro North (continued)



The picture above represents all 2016 alcohol-involved fatal crashes in Post 21.

In 2016, there were 1,821 alcohol-involved crashes in Post 21:

39	K - Fatal Crashes
94	A - Suspected Serious Injury Crashes
290	B - Suspected Minor Injury Crashes
324	C - Possible Injury Crashes
1,074	O - Property Damage Only/No Injury Crashes

Office of Highway Safety Planning

Physical Address:
7150 Harris Drive
Dimondale, Michigan 48821

Mailing Address:
P.O. Box 30634
Lansing, Michigan 48909

Phone: (517) 284-3112
Fax: (517) 284-3151

Find us on the web:
MichiganTrafficCrashFacts.org

