



2016

**MTCF**  
Michigan Traffic  
Crash Facts

# Michigan Traffic Crash Facts

## Reporting Criteria

Please pay particular attention to the wording when interpreting the three levels of data gathered for this report.

### Crash

The Crash Level analyzes data related to crash events and returns one result per crash.

Examples: Time, weather, and location.

### Units

The Units Level analyzes the experience of the units in the crash and returns one result per vehicle, driver, pedestrian, bicyclist, or train.

Examples: Vehicle type, driver condition, and unit events.

### People

The People Level analyzes the experience of the people involved in the crash and returns one result per occupant/person/party.

Examples: Age, injury severity, and seat belt or helmet use.

### **KABCO Injury Indicator:**

K = Killed

A = Suspected Serious Injury

B = Suspected Minor Injury

C = Possible Injury

O = No Injury

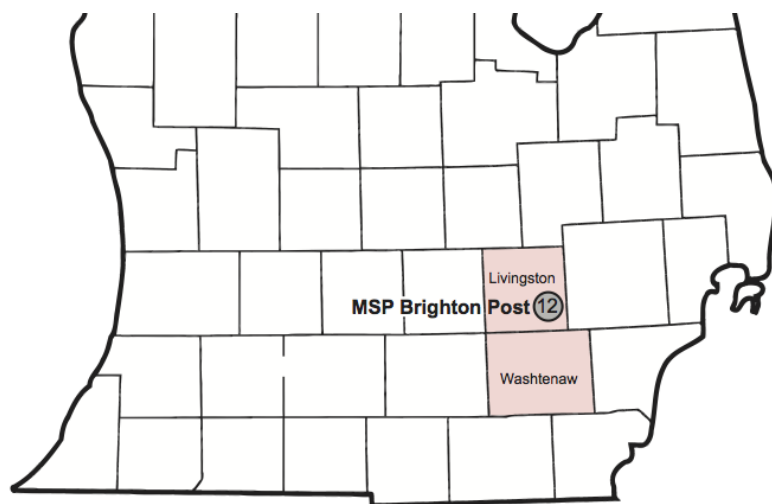
Property Damage Only (PDO)



## Michigan State Police (MSP) Post 12 - Brighton

### 2016 Traffic Crash Data & 2012-2016 5-Year Trends

Post 12 is comprised of Livingston and Washtenaw counties. Trend tables for this report are based on those counties.



### Sources:

The crashes in this report occurred on public roadways in Michigan and resulted in injuries, fatalities, or property damage (with \$1,000 as a reporting threshold). The information was gathered from Michigan Traffic Crash Report Forms (UD-10) submitted by local police departments, sheriff's offices, and the Michigan State Police. Other related information was obtained from the departments of Transportation, State, and Community Health.

This page left intentionally blank

## MSP Post 12 - Brighton

- There were 16,631 crashes in Post 12 during 2016. [Page 1]
- There were 47 fatalities in 43 fatal crashes in 2016 in Post 12. [Page 1]
- A total of 3,837 injuries resulted from 2,897 injury crashes. [Page 1]
- There were 13,691 property damage only crashes (no fatalities or injuries). [Page 1]
- December had the highest number of crashes (1,691). [Pages 1-2]
- July and September both had the highest number of fatal crashes (7 each) and fatalities (7 each). [Pages 1-2]
- September had the highest number of injury crashes (291) and injuries (410). [Page 1]
- December had the highest number of property damage only crashes (1,463). [Page 1]
- Of all vehicles involved in fatal crashes, 5 (8.5%) were motorcycles. [Page 1]
- Friday was the day of the week with the highest number of crashes (2,807) and fatal crashes (8). [Pages 2-3]
- The 3:00 PM – 5:59 PM time period had the highest number of crashes (4,277). This is true for each year from 2012 to 2016. The 9:00 AM – 11:59 AM time period had the highest number of fatal crashes (10). [Pages 5-6]
- During the period from 2012 to 2016, the highest number of deer crashes occurred in 2013 (1,843). There were no fatal crashes involving deer in 2016. [Pages 7-8]
- Washtenaw County (70.4%) had the highest number of crashes in Post 12 in 2016, followed by Livingston County (29.6%). [Page 8]
- Washtenaw County (53.2%) had the highest number of fatalities in Post 12 in 2016, followed by Livingston County (46.8%). The occurrence of fatal crashes out of all crashes in Livingston County was over twice that of Washtenaw County. [Page 8]
- The highest number of drivers in crashes (29,717) occurred during 2016 and the highest number of drivers coded drinking in crashes (530) occurred during 2012 within the five-year period. [Page 9]
- A total of 531 crashes involved alcohol in 2016, but 2012 had the highest number of alcohol-involved crashes, with 532. [Page 10]
- Alcohol-involved fatal crashes were the highest in 2014 during the five-year period from 2012 to 2016 at 20. [Page 10]
- A total of 12 fatal crashes and 17 suspected serious injury crashes involved drugs in 2016, both the highest during the five-year period. The highest number of all crashes involving drugs occurred in 2015 (159). [Page 11]
- There were 26,953 drivers wearing seatbelts and 178 drivers not wearing seatbelts in crashes in 2016. Of the 178 drivers not wearing seat belts, 3 (1.7%) were killed and 68 (38.2%) were injured. [Pages 14-16]
- The most common hazardous action coded for drivers in 2016 in all crashes was unable to stop in assured clear distance (5,212), while the most common hazardous action coded for drivers in fatal crashes was careless/negligent driving (9). [Page 17]

## Post 12 Experience

In 2016:

There were 29,717 drivers involved in 16,631 motor vehicle crashes in MSP Post 12. Of those crashes, 43 were classified as fatal, resulting in 47 fatalities. An additional 3,837 persons were injured.

Post 12 experienced the highest number of motor vehicle crashes (1,691) in December, the highest number of fatal crashes (7) and the highest number of persons killed (7) in July and September.

Michigan driver statistics indicate 7.4 percent of licensed drivers in Post 12 were age 16-20, and 12.5 percent of drivers in crashes were also in that age group.

## 2016 - Crashes and Injuries by Month

Month	Crashes				Persons	
	Total	Fatal	Injury	Property Damage Only (PDO)	Fatalities	Injuries
January	1,463	3	208	1,252	3	261
February	1,374	3	218	1,153	4	272
March	1,349	2	233	1,114	2	303
April	1,249	2	222	1,025	2	294
May	1,250	3	266	981	3	354
June	1,292	2	238	1,052	3	319
July	1,256	7	262	987	7	345
August	1,244	5	253	986	5	347
September	1,409	7	291	1,111	7	410
October	1,465	3	246	1,216	3	327
November	1,589	3	235	1,351	3	321
December	1,691	3	225	1,463	5	284
<b>Total</b>	<b>16,631</b>	<b>43</b>	<b>2,897</b>	<b>13,691</b>	<b>47</b>	<b>3,837</b>

## 2016 - Driver Statistics

Age Group	Statewide			Driver Rates	
	2016 Population	Licensed Drivers	Drivers in Crashes	Per 10k Population	Per 10k Licensed
0 - 15	96,678	3,405	46	4.8	135.1
16 - 20	52,459	30,571	3,722	709.5	1,217.5
21 - 24	46,224	30,516	3,414	738.6	1,118.8
25 - 64	280,675	276,094	18,155	646.8	657.6
65 +	77,297	71,375	2,555	330.5	358.0
Unknown	0	0	1,825	--	--
<b>Total</b>	<b>553,333</b>	<b>411,961</b>	<b>29,717</b>	<b>537.1</b>	<b>721.4</b>

## 2016 - Vehicles in Crashes

Vehicle Type	Motor Vehicles		Fatal Crashes		Injury Crashes	PDO Crashes
	Number of Vehicles	% of Total	Number	% of Total	Number	Number
Passenger car, SUV, van	24,661	83.0	39	66.1	4,450	20,172
Motor home	610	2.1	0	0.0	100	510
Pickup truck	2,697	9.1	8	13.6	476	2,213
Small truck under 10,000 lbs. GVWR	298	1.0	0	0.0	44	254
Motorcycle	164	0.6	5	8.5	117	42
Moped / goped	24	0.1	1	1.7	16	7
Go-cart / golf cart	4	0.0	0	0.0	2	2
Snowmobile	0	0.0	0	0.0	0	0
Off-Road Vehicle - ORV / All-Terrain Vehicle - ATV	5	0.0	0	0.0	3	2
Other	80	0.3	0	0.0	8	72
Truck/bus over 10,000 lbs.	797	2.7	6	10.2	132	659
Unknown	377	1.3	0	0.0	27	350
<b>Total</b>	<b>29,717</b>	<b>100.0</b>	<b>59</b>	<b>100.0</b>	<b>5,375</b>	<b>24,283</b>

## MSP Post 12 - Brighton (continued)

### 5-Year Trend - Crashes by Month

Month	2012		2013		2014		2015		2016	
	Total Crashes	Fatal Crashes	Total Crashes	Fatal Crashes	Total Crashes	Fatal Crashes	Total Crashes	Fatal Crashes	Total Crashes	Fatal Crashes
January	1,540	1	1,520	2	2,204	1	1,818	4	1,463	3
February	1,148	1	1,363	1	1,479	7	1,384	1	1,374	3
March	1,038	2	970	6	1,276	3	1,054	2	1,349	2
April	977	5	955	5	851	6	987	2	1,249	2
May	1,107	3	1,183	4	1,144	6	1,160	3	1,250	3
June	1,148	7	1,142	1	1,132	5	1,263	1	1,292	2
July	978	1	1,050	5	1,058	3	1,123	7	1,256	7
August	918	5	1,116	4	1,039	3	1,133	3	1,244	5
September	1,125	3	1,194	5	1,236	4	1,291	2	1,409	7
October	1,472	1	1,574	4	1,471	2	1,524	7	1,465	3
November	1,386	6	1,508	5	1,742	2	1,749	3	1,589	3
December	1,506	2	1,604	4	1,216	5	1,330	3	1,691	3
<b>Total</b>	<b>14,343</b>	<b>37</b>	<b>15,179</b>	<b>46</b>	<b>15,848</b>	<b>47</b>	<b>15,816</b>	<b>38</b>	<b>16,631</b>	<b>43</b>

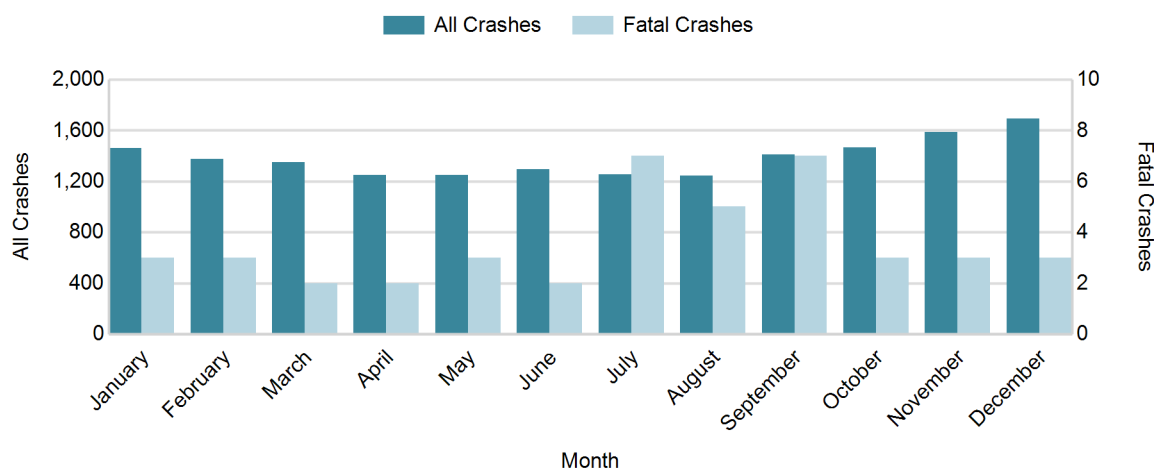
Note: † Indicates that the highest number of total crashes reported in the 5-year period occurred in the same month

### 5-Year Trend - Crashes by Day of Week

Day	2012		2013		2014		2015		2016	
	Total Crashes	Fatal Crashes	Total Crashes	Fatal Crashes	Total Crashes	Fatal Crashes	Total Crashes	Fatal Crashes	Total Crashes	Fatal Crashes
Monday	2,128	4	2,306	6	2,174	2	2,338	2	2,344	7
Tuesday	2,017	5	2,281	3	2,324	3	2,422	3	2,600	6
Wednesday	2,137	2	2,272	6	2,649	7	2,547	12	2,742	6
Thursday	2,072	5	2,357	9	2,607	7	2,273	7	2,697	6
Friday	2,684	9	2,537	9	2,609	9	2,626	7	2,807	8
Saturday	1,901	7	1,958	8	1,923	12	2,079	5	1,950	7
Sunday	1,404	5	1,468	5	1,562	7	1,531	2	1,491	3
<b>Total</b>	<b>14,343</b>	<b>37</b>	<b>15,179</b>	<b>46</b>	<b>15,848</b>	<b>47</b>	<b>15,816</b>	<b>38</b>	<b>16,631</b>	<b>43</b>

Note: † Indicates that the highest number of total crashes reported in the 5-year period occurred on the same day of the week

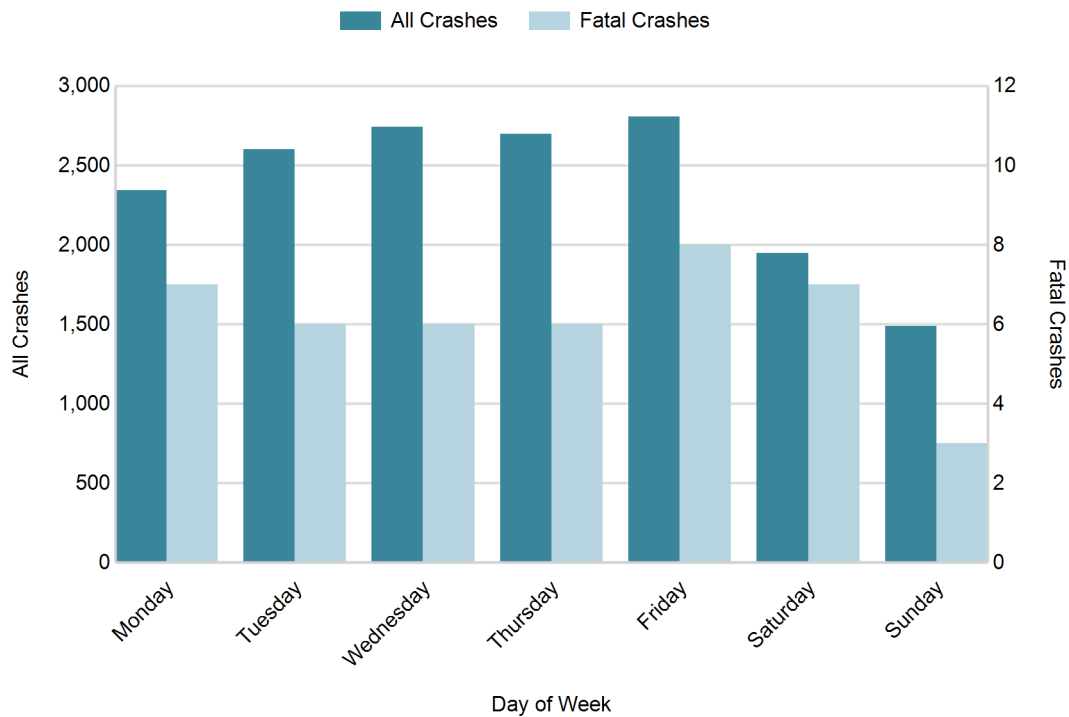
### 2016 Crashes by Month



2016 - Crashes by Day of Week

Day	All Crashes		Fatal Crashes		Injury Crashes			PDO Crashes
	Number	% of Total	Number	% of Fatal	A	B	C	Number
Monday	2,344	14.1	7	16.3	29	149	260	1,899
Tuesday	2,600	15.6	6	14.0	23	143	274	2,154
Wednesday	2,742	16.5	6	14.0	21	130	280	2,305
Thursday	2,697	16.2	6	14.0	26	130	286	2,249
Friday	2,807	16.9	8	18.6	31	171	269	2,328
Saturday	1,950	11.7	7	16.3	37	127	213	1,566
Sunday	1,491	9.0	3	7.0	26	115	157	1,190
<b>Total</b>	<b>16,631</b>	<b>100.0</b>	<b>43</b>	<b>100.0</b>	<b>193</b>	<b>965</b>	<b>1,739</b>	<b>13,691</b>

2016 Day of Week and Severity

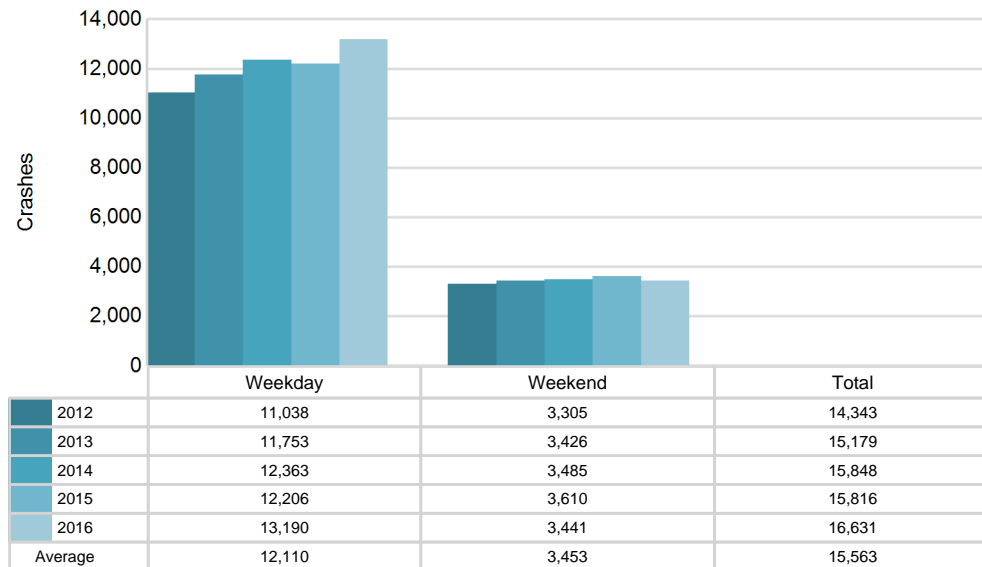


## MSP Post 12 - Brighton (continued)

### 5-Year Trend - Crashes by Weekday and Weekend

Portion of Week	2012		2013		2014		2015		2016	
	Total Crashes	Fatal Crashes	Total Crashes	Fatal Crashes	Total Crashes	Fatal Crashes	Total Crashes	Fatal Crashes	Total Crashes	Fatal Crashes
Weekday	11,038	25	11,753	33	12,363	28	12,206	31	13,190	33
Weekend	3,305	12	3,426	13	3,485	19	3,610	7	3,441	10
<b>Total</b>	<b>14,343</b>	<b>37</b>	<b>15,179</b>	<b>46</b>	<b>15,848</b>	<b>47</b>	<b>15,816</b>	<b>38</b>	<b>16,631</b>	<b>43</b>

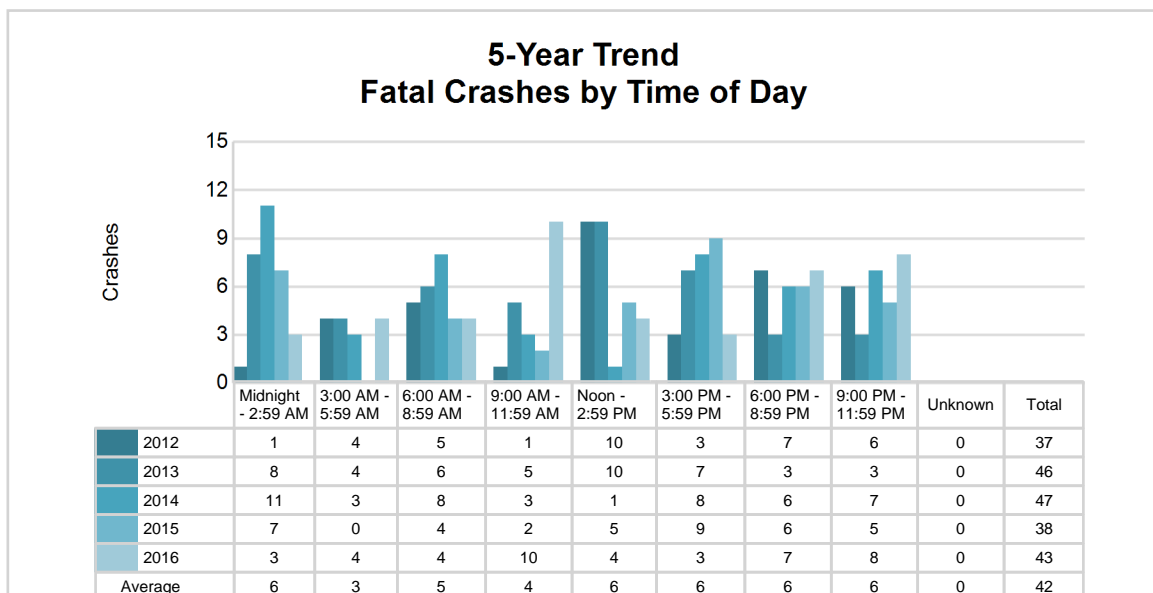
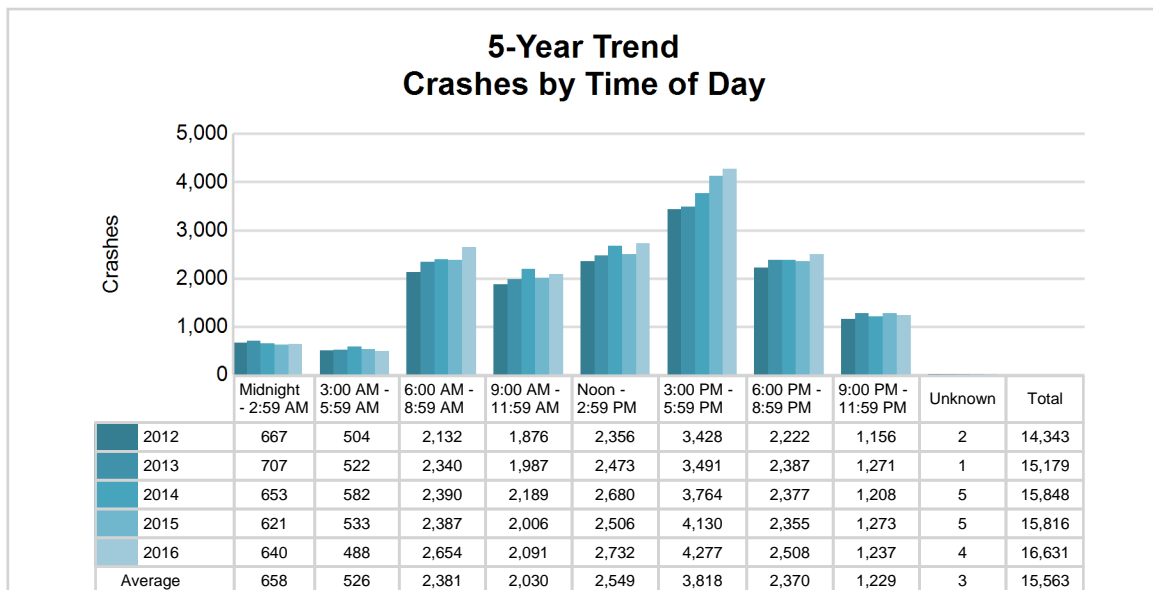
### 5-Year Crash Trends by Weekday (Monday - Friday) and Weekend (Saturday & Sunday)



## 5-Year Trend - Crashes by Time of Day

Time of Day	2012		2013		2014		2015		2016	
	Total Crashes	Fatal Crashes	Total Crashes	Fatal Crashes	Total Crashes	Fatal Crashes	Total Crashes	Fatal Crashes	Total Crashes	Fatal Crashes
Midnight - 2:59 AM	667	1	707	8	653	11	621	7	640	3
3:00 AM - 5:59 AM	504	4	522	4	582	3	533	0	488	4
6:00 AM - 8:59 AM	2,132	5	2,340	6	2,390	8	2,387	4	2,654	4
9:00 AM - 11:59 AM	1,876	1	1,987	5	2,189	3	2,006	2	2,091	10
Noon - 2:59 PM	2,356	10	2,473	10	2,680	1	2,506	5	2,732	4
3:00 PM - 5:59 PM	3,428 †	3	3,491 †	7	3,764 †	8	4,130 †	9	4,277 †	3
6:00 PM - 8:59 PM	2,222	7	2,387	3	2,377	6	2,355	6	2,508	7
9:00 PM - 11:59 PM	1,156	6	1,271	3	1,208	7	1,273	5	1,237	8
Unknown	2	0	1	0	5	0	5	0	4	0
<b>Total</b>	<b>14,343</b>	<b>37</b>	<b>15,179</b>	<b>46</b>	<b>15,848</b>	<b>47</b>	<b>15,816</b>	<b>38</b>	<b>16,631</b>	<b>43</b>

Note: † Indicates that the highest number of total crashes reported in the 5-year period occurred in the same time period

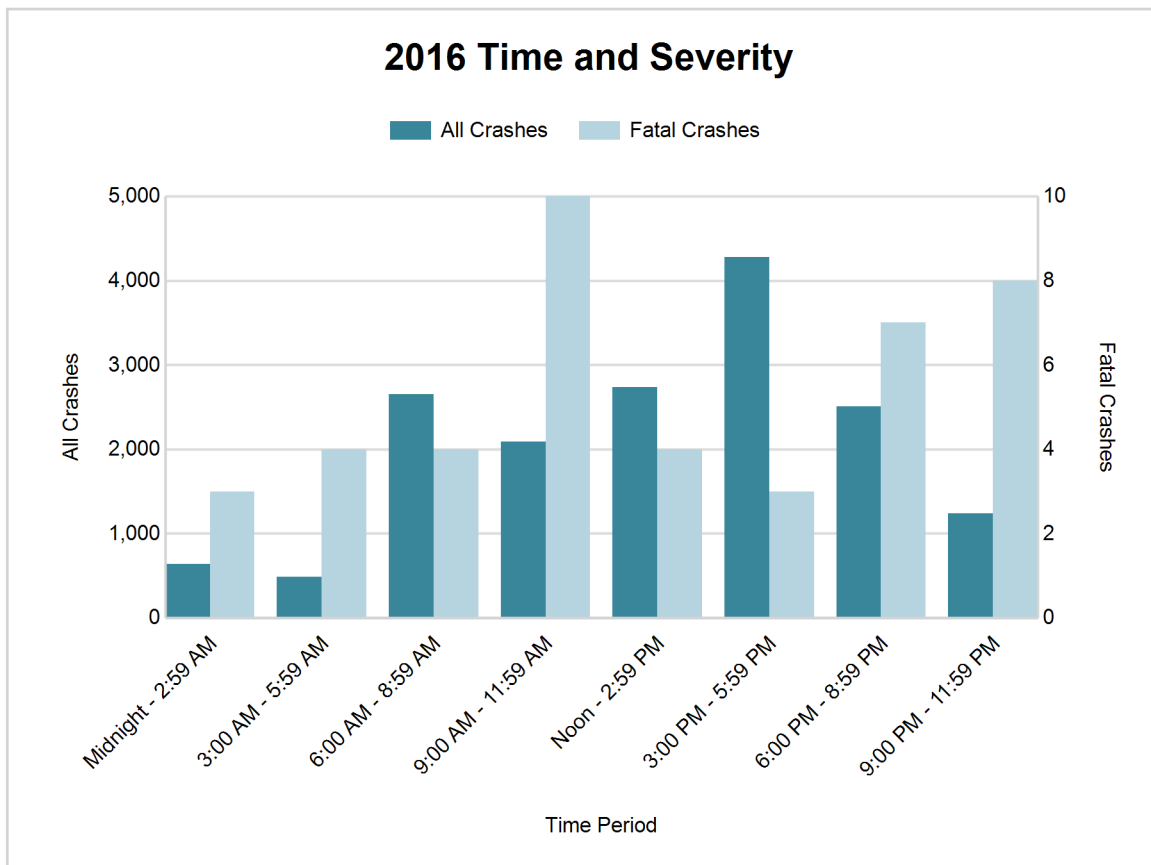




## MSP Post 12 - Brighton (continued)

### 2016 - Time and Severity

Time of Day	All Crashes		Fatal Crashes		Injury Crashes			PDO Crashes
	Number	% of Total	Number	% of Fatal	A	B	C	Number
Midnight - 2:59 AM	640	3.8	3	7.0	19	64	55	499
3:00 AM - 5:59 AM	488	2.9	4	9.3	6	36	43	399
6:00 AM - 8:59 AM	2,654	16.0	4	9.3	25	144	256	2,225
9:00 AM - 11:59 AM	2,091	12.6	10	23.3	21	118	216	1,726
Noon - 2:59 PM	2,732	16.4	4	9.3	29	152	330	2,217
3:00 PM - 5:59 PM	4,277	25.7	3	7.0	39	218	481	3,536
6:00 PM - 8:59 PM	2,508	15.1	7	16.3	29	159	239	2,074
9:00 PM - 11:59 PM	1,237	7.4	8	18.6	24	74	119	1,012
Unknown	4	0.0	0	0.0	1	0	0	3
<b>Total</b>	<b>16,631</b>	<b>100.0</b>	<b>43</b>	<b>100.0</b>	<b>193</b>	<b>965</b>	<b>1,739</b>	<b>13,691</b>



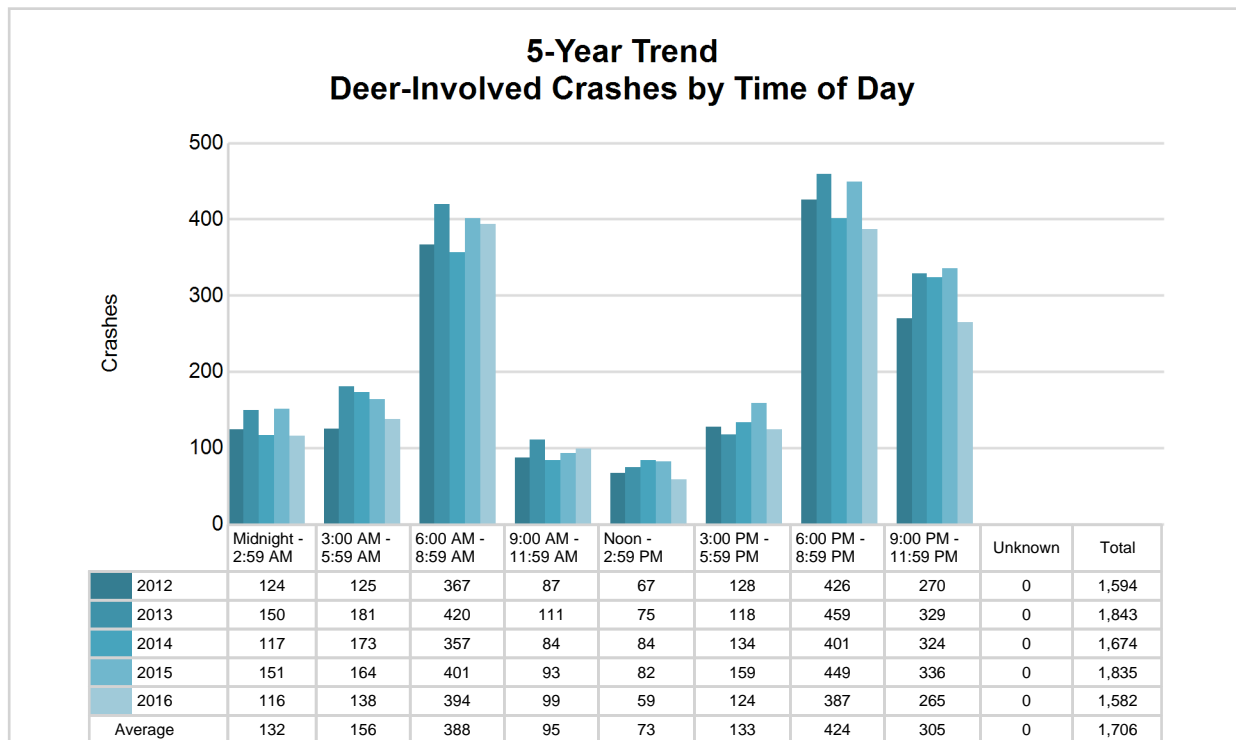
# MSP Post 12 - Brighton (continued)

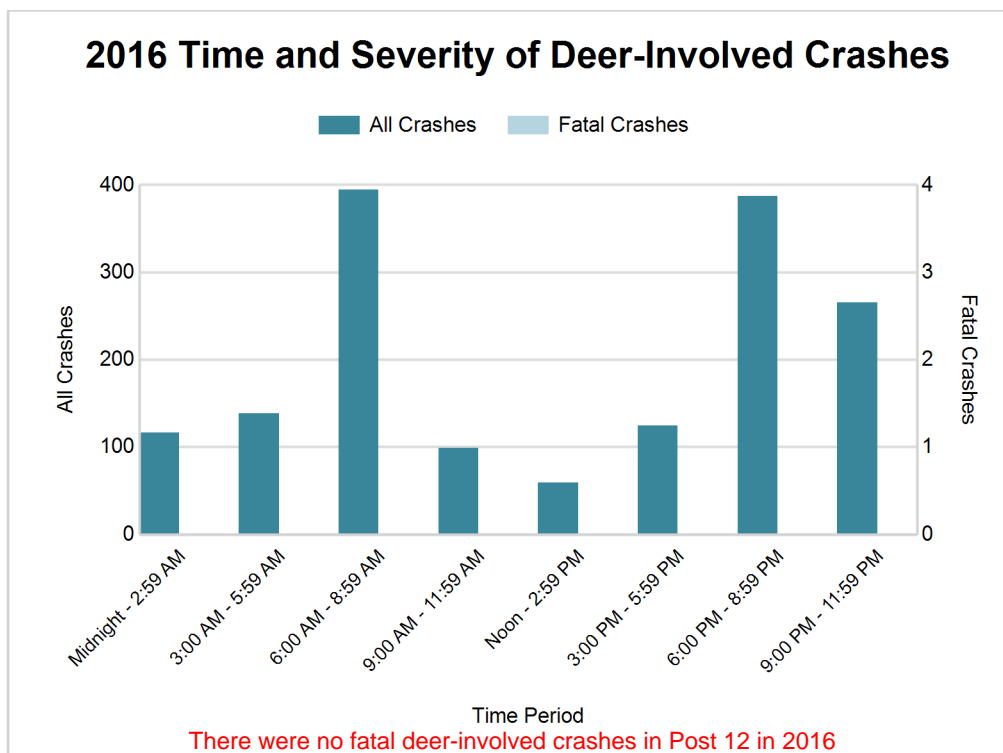
7

## 5-Year Trend - Deer-Involved Crashes by Time of Day

Time of Day	2012		2013		2014		2015		2016	
	Total Crashes	Fatal Crashes	Total Crashes	Fatal Crashes	Total Crashes	Fatal Crashes	Total Crashes	Fatal Crashes	Total Crashes	Fatal Crashes
Midnight - 2:59 AM	124	0	150	0	117	0	151	0	116	0
3:00 AM - 5:59 AM	125	0	181	0	173	0	164	0	138	0
6:00 AM - 8:59 AM	367	0	420	0	357	0	401	0	394	0
9:00 AM - 11:59 AM	87	0	111	0	84	0	93	0	99	0
Noon - 2:59 PM	67	0	75	0	84	0	82	0	59	0
3:00 PM - 5:59 PM	128	0	118	0	134	0	159	0	124	0
6:00 PM - 8:59 PM	426	0	459	0	401	0	449	1	387	0
9:00 PM - 11:59 PM	270	0	329	0	324	0	336	0	265	0
Unknown	0	0	0	0	0	0	0	0	0	0
<b>Total</b>	<b>1,594</b>	<b>0</b>	<b>1,843</b>	<b>0</b>	<b>1,674</b>	<b>0</b>	<b>1,835</b>	<b>1</b>	<b>1,582</b>	<b>0</b>

Note: † Indicates that the highest number of total crashes reported in the 5-year period occurred in the same time period





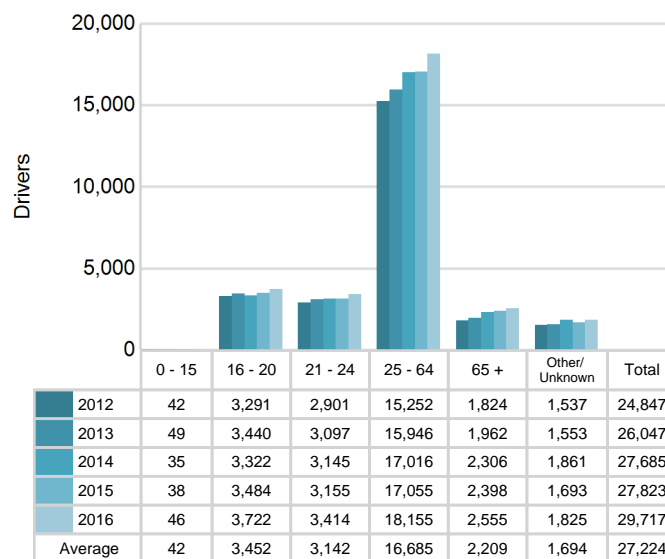
#### 2016 - Reported Motor Vehicle Crashes by County

County	Crashes											Persons	
	Total	Fatal	Injury	Property Damage	Inter-state	US Route	State Route	Local Street	Alcohol-Involved	Drug-Involved	Deer-Involved	Fatalities	Injuries
Livingston	4,929	20	788	4,121	1,029	658	672	2,556	202	47	621	22	1,046
Washtenaw	11,702	23	2,109	9,570	1,752	1,979	967	6,998	329	103	961	25	2,791
<b>Total</b>	<b>16,631</b>	<b>43</b>	<b>2,897</b>	<b>13,691</b>	<b>2,781</b>	<b>2,637</b>	<b>1,639</b>	<b>9,554</b>	<b>531</b>	<b>150</b>	<b>1,582</b>	<b>47</b>	<b>3,837</b>

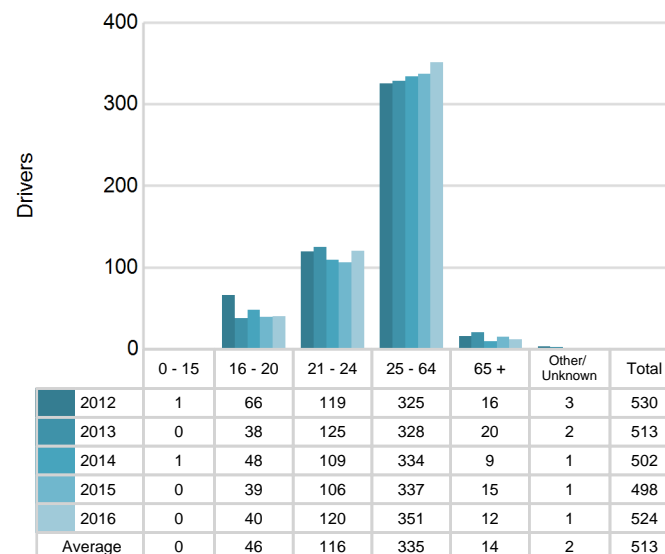
## 5-Year Trend - Drivers in Crashes Coded Drinking by Driver Age

Driver Age	2012		2013		2014		2015		2016	
	Total Drivers in Crashes	Total Drivers Coded Drinking	Total Drivers in Crashes	Total Drivers Coded Drinking	Total Drivers in Crashes	Total Drivers Coded Drinking	Total Drivers in Crashes	Total Drivers Coded Drinking	Total Drivers in Crashes	Total Drivers Coded Drinking
0 - 15	42	1	49	0	35	1	38	0	46	0
16 - 20	3,291	66	3,440	38	3,322	48	3,484	39	3,722	40
21 - 24	2,901	119	3,097	125	3,145	109	3,155	106	3,414	120
25 - 64	15,252	325	15,946	328	17,016	334	17,055	337	18,155	351
65 +	1,824	16	1,962	20	2,306	9	2,398	15	2,555	12
Unknown	1,537	3	1,553	2	1,861	1	1,693	1	1,825	1
<b>Total</b>	<b>24,847</b>	<b>530</b>	<b>26,047</b>	<b>513</b>	<b>27,685</b>	<b>502</b>	<b>27,823</b>	<b>498</b>	<b>29,717</b>	<b>524</b>

### 5-Year Trend Total Drivers in Crashes by Age



### 5-Year Trend Total Drivers Coded Drinking by Age



**2016 - Bodily Alcohol Concentration (BAC) Results Among All Vehicle Drivers in Alcohol-Involved Crashes by Age**

Age Group	Drivers				BAC Result Range for Drivers Coded Drinking				
	Total Drivers in Alcohol-Involved Crashes	Total Drivers Tested in all Crashes	Total Drivers Coded Drinking, Tested	Total Drivers Coded Drinking	BAC = 0.00	BAC 0.01 g/dL to 0.07 g/dL	BAC 0.08 g/dL to 0.16 g/dL	BAC 0.17 g/dL and Above	BAC Not Reported
0 - 15	0	0	0	0	0	0	0	0	0
16 - 20	60	47	34	40	4	6	9	4	17
21 - 24	141	127	103	120	3	9	36	24	48
25 - 64	479	363	302	351	7	26	81	87	150
65 +	24	20	11	12	0	0	6	2	4
Unknown	39	0	0	1	0	0	0	0	1
<b>Total</b>	<b>743</b>	<b>557</b>	<b>450</b>	<b>524</b>	<b>14</b>	<b>41</b>	<b>132</b>	<b>117</b>	<b>220</b>

Notes: BAC measured in grams (g) per deciliter (dL).

BAC may not be reported if drivers are not tested or if the results are not available immediately (as in the case of a blood test).

A driver may be coded by the officer as drinking even though no test is administered.

**Alcohol-Involved Crashes**

In 2016, there were 743 drivers in alcohol-involved crashes; 524 (70.5%) of those drivers were coded as had-been-drinking by the officer on the crash form.

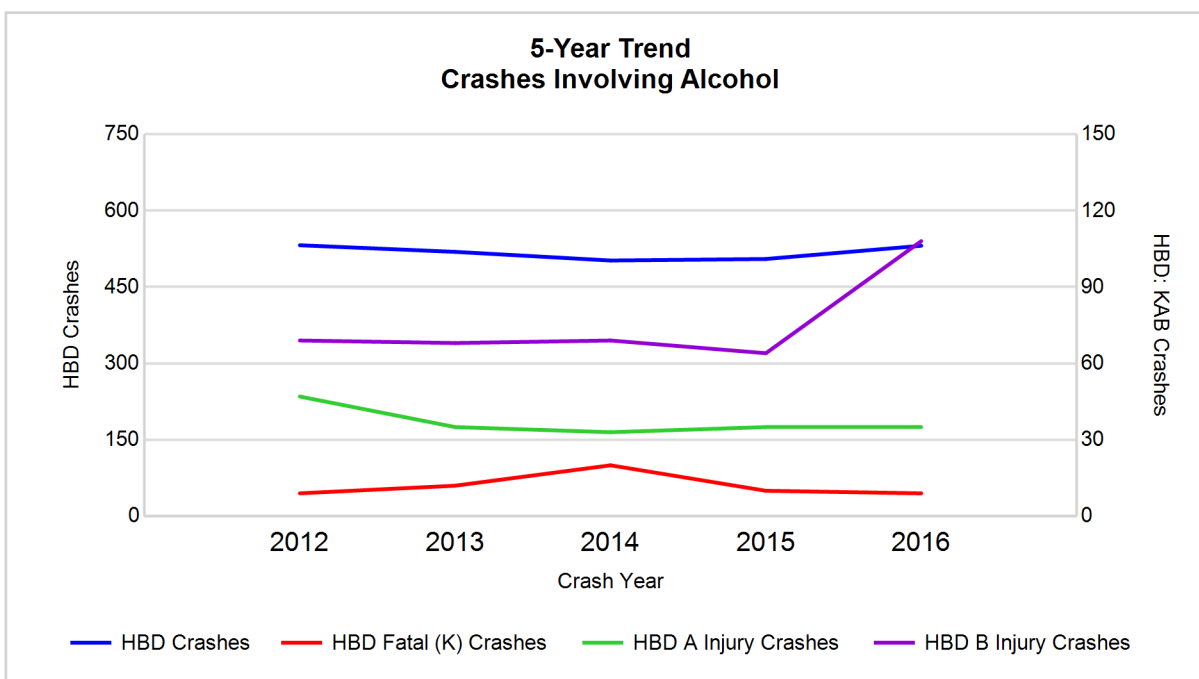
- 249 (47.5%) of the 524 drivers had a blood alcohol concentration (BAC) of 0.08 g/dL (grams per deciliter) or greater, and 117 (47.0%) of the 249 drivers had a BAC at or above 0.17 g/dL.
- 450 (85.9%) of the 524 drivers were coded as had-been-drinking and were tested for alcohol consumption.

**5-Year Trend - Crashes Involving Alcohol**

Year	All Crashes	HBD Crashes	% HBD	Fatal Crashes	HBD Fatal Crashes	% HBD	A Injury Crashes	HBD A Injury Crashes	% HBD	B Injury Crashes	HBD B Injury Crashes	% HBD
2012	14,343	532	3.7	37	9	24.3	189	47	24.9	761	69	9.1
2013	15,179	519	3.4	46	12	26.1	185	35	18.9	779	68	8.7
2014	15,848	502	3.2	47	20	42.6	178	33	18.5	702	69	9.8
2015	15,816	505	3.2	38	10	26.3	163	35	21.5	776	64	8.2
2016	16,631**	531	3.2	43	9	20.9*	193**	35	18.1*	965**	108**	11.2**

Note: \* Indicates that the most recent year is the lowest number or percentage reported in the 5-year period in that column

\*\* Indicates that the most recent year is the highest number or percentage reported in the 5-year period in that column



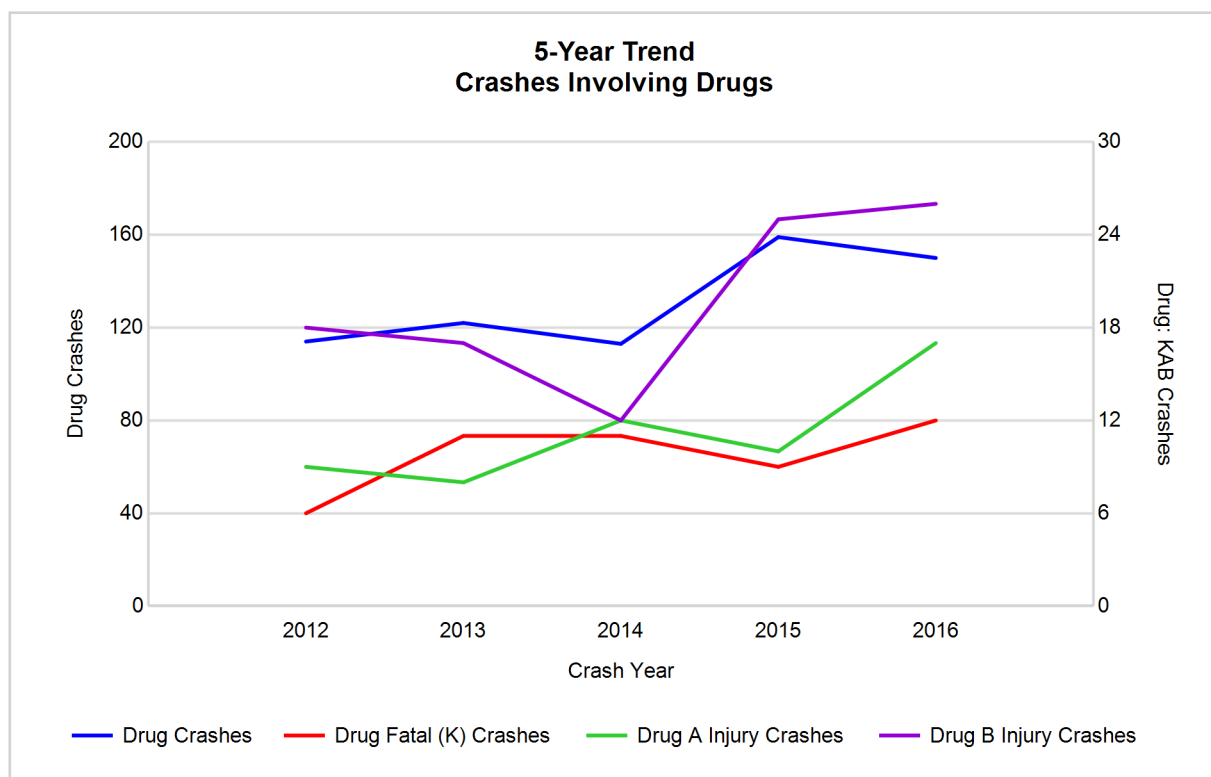
Note: Had-Been-Drinking (HBD)

## 5-Year Trend - Crashes Involving Drugs

Year	All Crashes	Drug Crashes	% Drug	Fatal Crashes	Drug Fatal Crashes	% Drug	A Injury Crashes	Drug A Injury Crashes	% Drug	B Injury Crashes	Drug B Injury Crashes	% Drug
2012	14,343	114	0.8	37	6	16.2	189	9	4.8	761	18	2.4
2013	15,179	122	0.8	46	11	23.9	185	8	4.3	779	17	2.2
2014	15,848	113	0.7	47	11	23.4	178	12	6.7	702	12	1.7
2015	15,816	159	1.0	38	9	23.7	163	10	6.1	776	25	3.2
2016	16,631**	150	0.9	43	12**	27.9**	193**	17**	8.8**	965**	26**	2.7

Note: \* Indicates that the most recent year is the lowest number or percentage reported in the 5-year period in that column

\*\* Indicates that the most recent year is the highest number or percentage reported in the 5-year period in that column

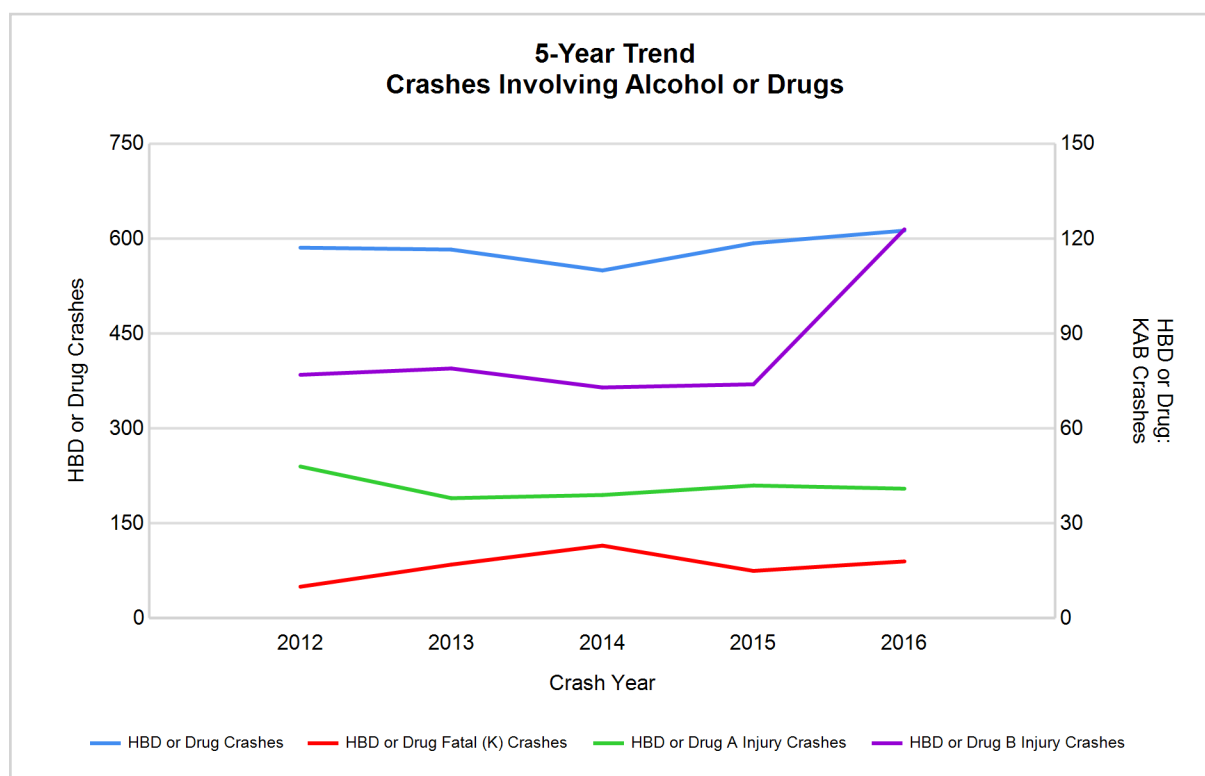


## 5-Year Trend - Crashes Involving Alcohol or Drugs

Year	All Crashes	HBD or Drug Crashes	% HBD or Drug	Fatal Crashes	HBD or Drug Fatal Crashes	% HBD or Drug	A Injury Crashes	HBD or Drug A Injury Crashes	% HBD or Drug	B Injury Crashes	HBD or Drug B Injury Crashes	% HBD or Drug
2012	14,343	586	4.1	37	10	27.0	189	48	25.4	761	77	10.1
2013	15,179	583	3.8	46	17	37.0	185	38	20.5	779	79	10.1
2014	15,848	550	3.5	47	23	48.9	178	39	21.9	702	73	10.4
2015	15,816	593	3.7	38	15	39.5	163	42	25.8	776	74	9.5
2016	16,631**	613**	3.7	43	18	41.9	193**	41	21.2	965**	123**	12.7**

Note: \* Indicates that the most recent year is the lowest number or percentage reported in the 5-year period in that column

\*\* Indicates that the most recent year is the highest number or percentage reported in the 5-year period in that column



Note: Had-Been-Drinking (HBD)

# MSP Post 12 - Brighton (continued)

13

## 2016 - Restraints Worn Among Vehicle Drivers and Injured Passengers by Vehicle Type

Vehicle Type	Total Occupants			Fatalities			A - Suspected Serious			B - Suspected Minor			C - Possible Injury			No Injury		
	Total	Used Restraint	%	Total	Used Restraint	%	Total	Used Restraint	%	Total	Used Restraint	%	Total	Used Restraint	%	Total	Used Restraint	%
Passenger car, SUV, van	25,343	23,499	92.7	19	14	73.7	139	113	81.3	848	779	91.9	2,107	2,016	95.7	21,102	20,574	97.5
Motor home	634	587	92.6	0	0	0.0	1	0	0.0	25	23	92.0	40	40	100.0	539	524	97.2
Pickup truck	2,741	2,475	90.3	5	1	20.0	11	10	90.9	75	62	82.7	149	135	90.6	2,351	2,266	96.4
Small truck under 10,000 lbs. GVWR	302	276	91.4	0	0	0.0	3	1	33.3	8	8	100.0	16	15	93.8	260	252	96.9
Motorcycle	177	117	66.1	6	1	16.7	21	15	71.4	64	44	68.8	36	30	83.3	39	27	69.2
Moped / goped	25	6	24.0	1	0	0.0	4	2	50.0	10	4	40.0	3	0	0.0	5	0	0.0
Go-cart / golf cart	5	3	60.0	0	0	0.0	2	1	50.0	1	1	100.0	0	0	0.0	1	1	100.0
Snowmobile	0	0	0.0	0	0	0.0	0	0	0.0	0	0	0.0	0	0	0.0	0	0	0.0
Off-Road Vehicle - ORV / All-Terrain Vehicle - ATV	6	1	16.7	0	0	0.0	4	1	25.0	0	0	0.0	0	0	0.0	2	0	0.0
Other	80	47	58.8	0	0	0.0	1	0	0.0	1	1	100.0	2	2	100.0	63	44	69.8
Truck/bus over 10,000 lbs.	804	724	90.0	2	2	100.0	5	4	80.0	12	9	75.0	20	14	70.0	725	695	95.9
Unknown	377	7	1.9	0	0	0.0	0	0	0.0	0	0	0.0	0	0	0.0	16	4	25.0
<b>Total</b>	<b>30,494</b>	<b>27,742</b>	<b>91.0</b>	<b>33</b>	<b>18</b>	<b>54.5</b>	<b>191</b>	<b>147</b>	<b>77.0</b>	<b>1,044</b>	<b>931</b>	<b>89.2</b>	<b>2,373</b>	<b>2,252</b>	<b>94.9</b>	<b>25,103</b>	<b>24,387</b>	<b>97.1</b>

Note: Restraint Use includes shoulder belt only used, lap belt only used, both lap and shoulder belts used, child restraint used, restraint failure, and helmet worn.

## 2016 - Restraints Worn Among Vehicle Drivers and Injured Passengers by Age

Age Group	Total Occupants			Fatalities			A - Suspected Serious			B - Suspected Minor			C - Possible Injury			No Injury		
	Total	Used Restraint	%	Total	Used Restraint	%	Total	Used Restraint	%	Total	Used Restraint	%	Total	Used Restraint	%	Total	Used Restraint	%
0 - 15	230	209	90.9	0	0	0.0	11	8	72.7	40	37	92.5	138	127	92.0	39	37	94.9
16 - 20	3,838	3,722	97.0	2	1	50.0	17	12	70.6	170	150	88.2	270	255	94.4	3,374	3,303	97.9
21 - 24	3,482	3,358	96.4	3	2	66.7	30	22	73.3	152	131	86.2	246	235	95.5	3,047	2,966	97.3
25 - 64	18,473	17,858	96.7	21	9	42.9	113	88	77.9	567	510	89.9	1,460	1,384	94.8	16,285	15,866	97.4
65 +	2,641	2,571	97.3	7	6	85.7	20	17	85.0	115	103	89.6	258	251	97.3	2,240	2,194	97.9
Unknown	1,830	24	1.3	0	0	0.0	0	0	0.0	0	0	0.0	1	0	0.0	118	21	17.8
<b>Total</b>	<b>30,494</b>	<b>27,742</b>	<b>91.0</b>	<b>33</b>	<b>18</b>	<b>54.5</b>	<b>191</b>	<b>147</b>	<b>77.0</b>	<b>1,044</b>	<b>931</b>	<b>89.2</b>	<b>2,373</b>	<b>2,252</b>	<b>94.9</b>	<b>25,103</b>	<b>24,387</b>	<b>97.1</b>

Note: Restraint Use includes shoulder belt only used, lap belt only used, both lap and shoulder belts used, child restraint used, restraint failure, and helmet worn.



## 5-Year Trend - Restraint Use Among Drivers

Restraint Use	2012			2013			2014			2015			2016		
	Drivers	Fatal Drivers	Injured Drivers	Drivers	Fatal Drivers	Injured Drivers	Drivers	Fatal Drivers	Injured Drivers	Drivers	Fatal Drivers	Injured Drivers	Drivers	Fatal Drivers	Injured Drivers
No belts available	54	0	6	40	1	4	33	1	5	33	0	6	38	0	7
Shoulder belt only used	12	0	2	11	0	1	8	0	0	9	0	2	23	0	4
Lap belt only used	31	0	6	23	1	1	26	0	3	29	0	2	24	0	3
Both lap & shoulder belts used	22,560	11	2,357	23,825	20	2,288	25,109	14	2,220	25,339	10	2,405	26,906	14	2,570
No belts used	149	4	69	133	12	64	116	8	59	135	5	63	140	3	61
Child restraint used	0	0	0	0	0	0	0	0	0	1	0	0	1	0	0
Child restraint not used, unavailable or improper use	0	0	0	0	0	0	2	0	0	0	0	0	1	0	0
Restraint failure	4	0	0	2	0	1	0	0	0	1	0	0	0	0	0
Restraint use unknown	1,444	3	56	1,500	2	43	1,822	4	47	1,677	2	52	1,994	5	81
Helmet worn	168	3	129	148	1	108	125	7	84	131	5	90	116	1	88
Helmet not worn	38	2	29	35	0	28	45	2	35	65	3	38	54	5	35
Helmet use unknown	7	1	3	4	0	3	11	0	8	13	2	6	8	0	5
Uncoded & errors	380	0	0	326	0	0	388	0	0	390	0	0	412	0	0
<b>Total</b>	<b>24,847</b>	<b>24</b>	<b>2,657</b>	<b>26,047</b>	<b>37</b>	<b>2,541</b>	<b>27,685</b>	<b>36</b>	<b>2,461</b>	<b>27,823</b>	<b>27</b>	<b>2,664</b>	<b>29,717</b>	<b>28</b>	<b>2,854</b>

## 5-Year Trend - Restraint Use Among Drivers Coded Drinking

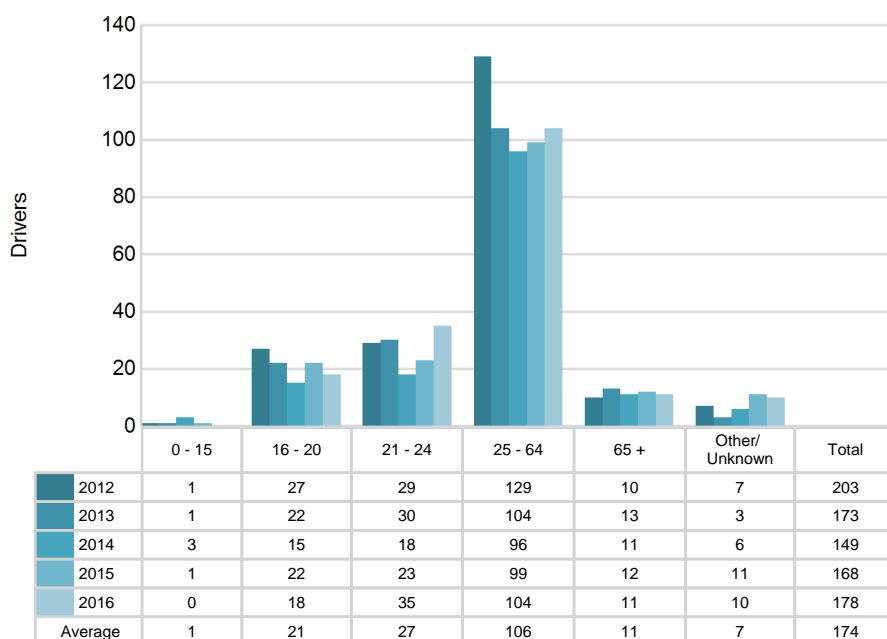
Restraint Use	2012			2013			2014			2015			2016		
	Drivers	Fatal Drivers	Injured Drivers	Drivers	Fatal Drivers	Injured Drivers	Drivers	Fatal Drivers	Injured Drivers	Drivers	Fatal Drivers	Injured Drivers	Drivers	Fatal Drivers	Injured Drivers
No belts available	0	0	0	1	0	1	3	1	0	1	0	1	1	0	0
Shoulder belt only used	0	0	0	1	0	1	0	0	0	0	0	0	0	0	0
Lap belt only used	0	0	0	0	0	0	0	0	0	1	0	0	1	0	0
Both lap & shoulder belts used	411	0	116	397	4	108	395	6	110	383	1	91	394	1	132
No belts used	38	1	28	39	5	22	32	5	20	29	3	17	30	2	17
Child restraint used	0	0	0	0	0	0	0	0	0	0	0	0	0	0	0
Child restraint not used, unavailable or improper use	0	0	0	0	0	0	0	0	0	0	0	0	0	0	0
Restraint failure	0	0	0	0	0	0	0	0	0	0	0	0	0	0	0
Restraint use unknown	67	2	23	58	0	14	61	2	18	73	1	19	76	1	34
Helmet worn	7	1	6	11	0	7	7	1	5	3	0	3	6	0	5
Helmet not worn	3	0	2	5	0	4	4	1	3	7	2	4	15	1	13
Helmet use unknown	2	1	1	1	0	0	0	0	0	1	0	0	1	0	1
Uncoded & errors	2	0	0	0	0	0	0	0	0	0	0	0	0	0	0
<b>Total</b>	<b>530</b>	<b>5</b>	<b>176</b>	<b>513</b>	<b>9</b>	<b>157</b>	<b>502</b>	<b>16</b>	<b>156</b>	<b>498</b>	<b>7</b>	<b>135</b>	<b>524</b>	<b>5</b>	<b>202</b>

## 5-Year Trend - Seatbelt Not Used Among Drivers by Age

Age Group	2012			2013			2014			2015			2016		
	Drivers	Fatal Drivers	Injured Drivers	Drivers	Fatal Drivers	Injured Drivers	Drivers	Fatal Drivers	Injured Drivers	Drivers	Fatal Drivers	Injured Drivers	Drivers	Fatal Drivers	Injured Drivers
0 - 15	1	0	0	1	0	1	3	0	2	1	0	1	0	0	0
16 - 20	27	0	13	22	2	8	15	0	9	22	0	7	18	0	8
21 - 24	29	1	14	30	2	11	18	2	8	23	2	13	35	0	16
25 - 64	129	3	45	104	6	44	96	6	41	99	3	43	104	3	35
65 +	10	0	2	13	3	4	11	1	3	12	0	5	11	0	9
Unknown	7	0	1	3	0	0	6	0	1	11	0	0	10	0	0
<b>Total</b>	<b>203</b>	<b>4</b>	<b>75</b>	<b>173</b>	<b>13</b>	<b>68</b>	<b>149</b>	<b>9</b>	<b>64</b>	<b>168</b>	<b>5</b>	<b>69</b>	<b>178</b>	<b>3</b>	<b>68</b>

Note: Seatbelt Not Used includes no belts available or no belts used.

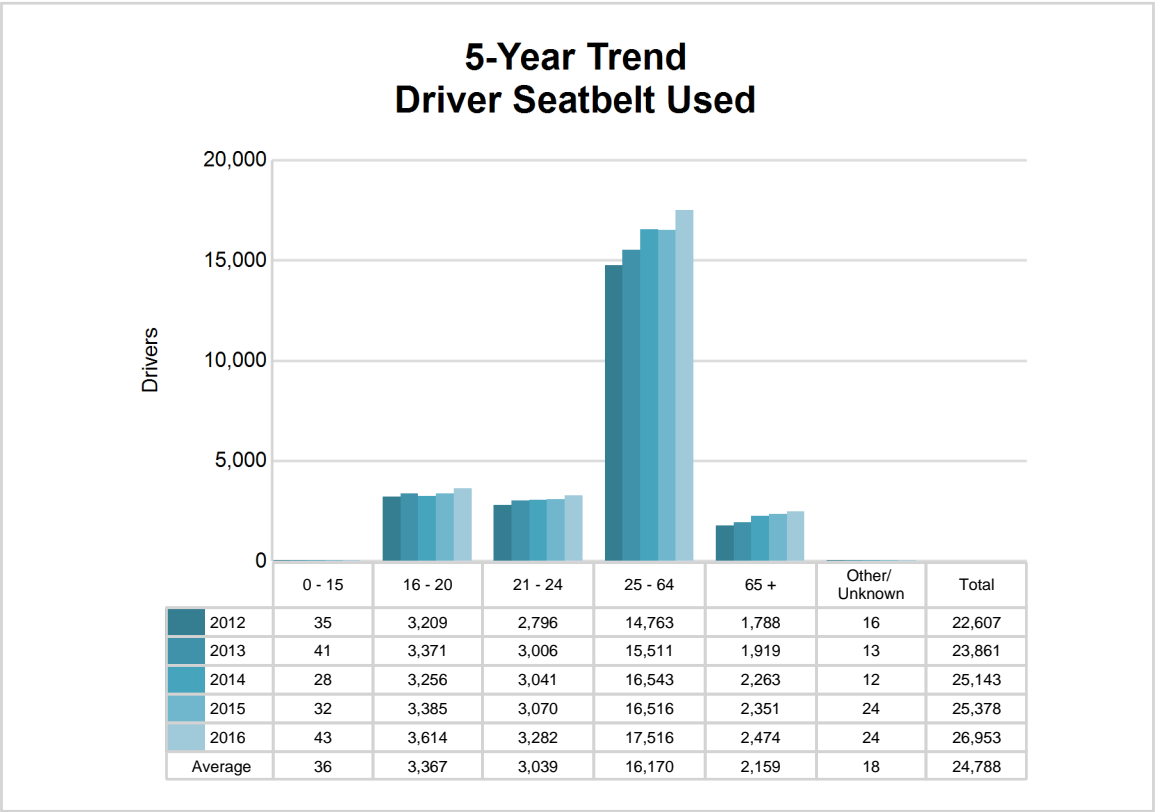
## 5-Year Trend Driver Seatbelt Not Used



5-Year Trend - Seatbelt Used Among Drivers by Age

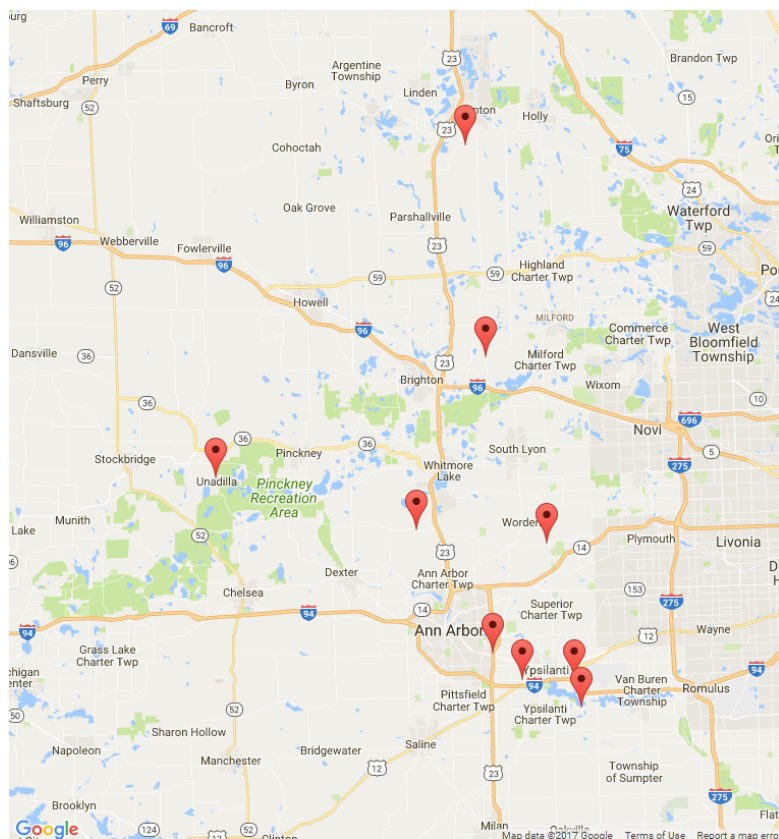
Age Group	2012			2013			2014			2015			2016		
	Drivers	Fatal Drivers	Injured Drivers	Drivers	Fatal Drivers	Injured Drivers	Drivers	Fatal Drivers	Injured Drivers	Drivers	Fatal Drivers	Injured Drivers	Drivers	Fatal Drivers	Injured Drivers
0 - 15	35	0	4	41	0	5	28	0	4	32	0	4	43	0	6
16 - 20	3,209	2	347	3,371	1	324	3,256	3	280	3,385	2	298	3,614	1	313
21 - 24	2,796	2	282	3,006	1	287	3,041	3	236	3,070	1	271	3,282	1	319
25 - 64	14,763	6	1,547	15,511	15	1,470	16,543	5	1,467	16,516	4	1,581	17,516	6	1,660
65 +	1,788	1	184	1,919	4	205	2,263	3	234	2,351	3	255	2,474	6	279
Unknown	16	0	1	13	0	0	12	0	2	24	0	0	24	0	0
Total	22,607	11	2,365	23,861	21	2,291	25,143	14	2,223	25,378	10	2,409	26,953	14	2,577

Note: Seatbelt Used includes shoulder belt only used, lap belt only used, both lap and shoulder belts used, and restraint failure.



## 5-Year Trend - Drivers in Crashes by Hazardous Action

Hazardous Action	2012		2013		2014		2015		2016	
	Total Drivers in Crashes	Drivers in Fatal Crashes	Total Drivers in Crashes	Drivers in Fatal Crashes	Total Drivers in Crashes	Drivers in Fatal Crashes	Total Drivers in Crashes	Drivers in Fatal Crashes	Total Drivers in Crashes	Drivers in Fatal Crashes
None	12,057	25	12,561	21	13,260	21	13,644	29	14,345	23
Speed too fast	1,902	6	2,177	10	2,433	12	1,907	11	1,792	8
Speed too slow	9	1	9	0	7	0	7	0	13	0
Failed to yield	2,153	5	2,213	4	2,443	6	2,463	2	2,853	4
Disregard traffic control	301	1	284	1	263	1	339	3	351	1
Drove wrong way	16	0	18	0	19	1	5	0	10	0
Drove left of center	131	2	140	7	135	1	144	4	127	1
Improper passing	128	0	145	1	153	0	146	0	136	0
Improper lane use	535	0	560	0	579	0	584	0	661	1
Improper turn	226	0	231	0	230	1	243	0	294	0
Improper/no signal	47	0	37	1	39	1	61	0	44	0
Improper backing	300	0	321	0	393	0	364	0	298	0
Unable to stop in assured clear distance	4,099	3	4,289	0	4,357	3	4,636	2	5,212	1
Other	755	4	783	6	820	7	709	5	723	2
Unknown	795	4	896	4	1,050	6	965	2	1,213	6
Reckless driving	146	2	132	7	103	2	125	2	150	3
Careless/negligent driving	731	3	717	4	769	8	962	4	959	9
Uncoded & errors	516	1	534	3	632	0	519	0	536	0
<b>Total</b>	<b>24,847</b>	<b>57</b>	<b>26,047</b>	<b>69</b>	<b>27,685</b>	<b>70</b>	<b>27,823</b>	<b>64</b>	<b>29,717</b>	<b>59</b>



The picture above represents all 2016 alcohol-involved fatal crashes in Post 12.

In 2016, there were 531 alcohol-involved crashes in Post 12:

9	K - Fatal Crashes
35	A - Suspected Serious Injury Crashes
108	B - Suspected Minor Injury Crashes
99	C - Possible Injury Crashes
280	O - Property Damage Only/No Injury Crashes

### Office of Highway Safety Planning

Physical Address:  
7150 Harris Drive  
Dimondale, Michigan 48821

Mailing Address:  
P.O. Box 30634  
Lansing, Michigan 48909

Phone: (517) 284-3112  
Fax: (517) 284-3151

Find us on the web:  
[MichiganTrafficCrashFacts.org](http://MichiganTrafficCrashFacts.org)

