



2016

**MTCF**  
Michigan Traffic  
Crash Facts

# Michigan Traffic Crash Facts

## Reporting Criteria

Please pay particular attention to the wording when interpreting the three levels of data gathered for this report.

### Crash

The Crash Level analyzes data related to crash events and returns one result per crash.

Examples: Time, weather, and location.

### Units

The Units Level analyzes the experience of the units in the crash and returns one result per vehicle, driver, pedestrian, bicyclist, or train.

Examples: Vehicle type, driver condition, and unit events.

### People

The People Level analyzes the experience of the people involved in the crash and returns one result per occupant/person/party.

Examples: Age, injury severity, and seat belt or helmet use.

### **KABCO Injury Indicator:**

K = Killed

A = Suspected Serious Injury

B = Suspected Minor Injury

C = Possible Injury

O = No Injury

Property Damage Only (PDO)



## Macomb County

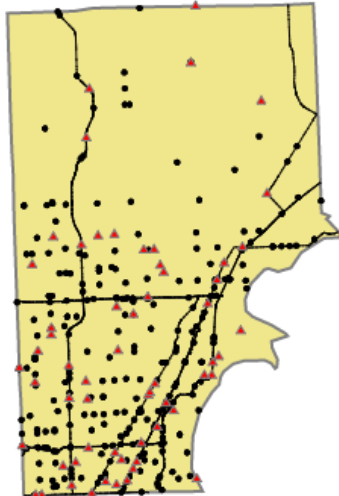
### 2016 Traffic Crash Data & 2012-2016 5-Year Trends



### Sources:

The crashes in this report occurred on public roadways in Michigan and resulted in injuries, fatalities, or property damage (with \$1,000 as a reporting threshold). The information was gathered from Michigan Traffic Crash Report Forms (UD-10) submitted by local police departments, sheriff's offices, and the Michigan State Police. Other related information was obtained from the departments of Transportation, State, and Community Health.

This page left intentionally blank



Crashes by most severe injury (mapped/actual)

- ▲ K - Fatal (60/60)
- A - Suspected Serious (288/288)

## Macomb County

In 2016:

There were 49,791 drivers involved in 25,411 motor vehicle crashes in Macomb County. Of those crashes, 60 were classified as fatal, resulting in 63 fatalities. An additional 7,404 persons were injured.

Macomb County experienced the highest number of motor vehicle crashes (2,553) in December, the highest number of fatal crashes (9) and the highest number of persons killed (9) in November.

Michigan driver statistics indicate 6.5 percent of licensed drivers in Macomb County were age 16-20, and 11.4 percent of drivers in crashes were also in that age group.

## 2016 - Crashes and Injuries by Month

Month	Crashes				Persons	
	Total	Fatal	Injury	Property Damage Only (PDO)	Fatalities	Injuries
January	2,025	3	411	1,611	3	565
February	2,033	6	393	1,634	7	540
March	2,001	3	391	1,607	3	554
April	1,970	6	441	1,523	7	590
May	2,014	4	474	1,536	5	657
June	2,046	4	452	1,590	4	638
July	1,973	4	435	1,534	4	588
August	2,024	7	477	1,540	7	642
September	2,263	8	533	1,722	8	741
October	2,325	4	487	1,834	4	640
November	2,184	9	440	1,735	9	624
December	2,553	2	475	2,076	2	625
<b>Total</b>	<b>25,411</b>	<b>60</b>	<b>5,409</b>	<b>19,942</b>	<b>63</b>	<b>7,404</b>

## 2016 - Driver Statistics

Age Group	Statewide			Driver Rates	
	2016 Population	Licensed Drivers	Drivers in Crashes	Per 10k Population	Per 10k Licensed
0 - 15	163,439	4,316	70	4.3	162.2
16 - 20	50,774	43,049	5,692	1,121.0	1,322.2
21 - 24	44,189	43,177	4,766	1,078.5	1,103.8
25 - 64	468,612	448,839	29,885	637.7	665.8
65 +	140,716	122,724	4,746	337.3	386.7
Unknown	0	0	4,632	- -	- -
<b>Total</b>	<b>867,730</b>	<b>662,105</b>	<b>49,791</b>	<b>573.8</b>	<b>752.0</b>

## 2016 - Vehicles in Crashes

Vehicle Type	Motor Vehicles		Fatal Crashes		Injury Crashes	PDO Crashes
	Number of Vehicles	% of Total	Number	% of Total	Number	Number
Passenger car, SUV, van	41,379	83.1	67	67.7	9,206	32,106
Motor home	979	2.0	2	2.0	230	747
Pickup truck	4,770	9.6	9	9.1	948	3,813
Small truck under 10,000 lbs. GVWR	350	0.7	0	0.0	74	276
Motorcycle	226	0.5	12	12.1	155	59
Moped / goped	20	0.0	1	1.0	12	7
Go-cart / golf cart	1	0.0	0	0.0	1	0
Snowmobile	0	0.0	0	0.0	0	0
Off-Road Vehicle - ORV / All-Terrain Vehicle - ATV	8	0.0	0	0.0	6	2
Other	155	0.3	1	1.0	21	133
Truck/bus over 10,000 lbs.	991	2.0	5	5.1	160	826
Unknown	912	1.8	2	2.0	80	830
<b>Total</b>	<b>49,791</b>	<b>100.0</b>	<b>99</b>	<b>100.0</b>	<b>10,893</b>	<b>38,799</b>

## 5-Year Trend - Crashes by Month

Month	2012		2013		2014		2015		2016	
	Total Crashes	Fatal Crashes	Total Crashes	Fatal Crashes	Total Crashes	Fatal Crashes	Total Crashes	Fatal Crashes	Total Crashes	Fatal Crashes
January	1,929	2	1,898	4	2,741	1	2,391	2	2,025	3
February	1,518	1	1,818	4	2,157	4	2,121	5	2,033	6
March	1,571	5	1,776	5	2,016	1	1,904	2	2,001	3
April	1,581	2	1,792	4	1,553	2	1,744	2	1,970	6
May	1,878	7	2,102	5	1,980	4	2,098	9	2,014	4
June	1,755	4	1,902	4	1,975	4	2,025	5	2,046	4
July	1,808	3	1,840	5	1,693	3	1,964	9	1,973	4
August	1,743	7	1,682	3	1,858	3	1,874	4	2,024	7
September	1,618	4	1,936	8	2,020	3	2,174	2	2,263	8
October	2,232	8	2,199	2	2,286	7	2,217	2	2,325	4
November	1,873	5	1,946	3	2,322	3	2,167	4	2,184	9
December	2,196	2	2,324	2	1,870	6	2,183	9	2,553	2
<b>Total</b>	<b>21,702</b>	<b>50</b>	<b>23,215</b>	<b>49</b>	<b>24,471</b>	<b>41</b>	<b>24,862</b>	<b>55</b>	<b>25,411</b>	<b>60</b>

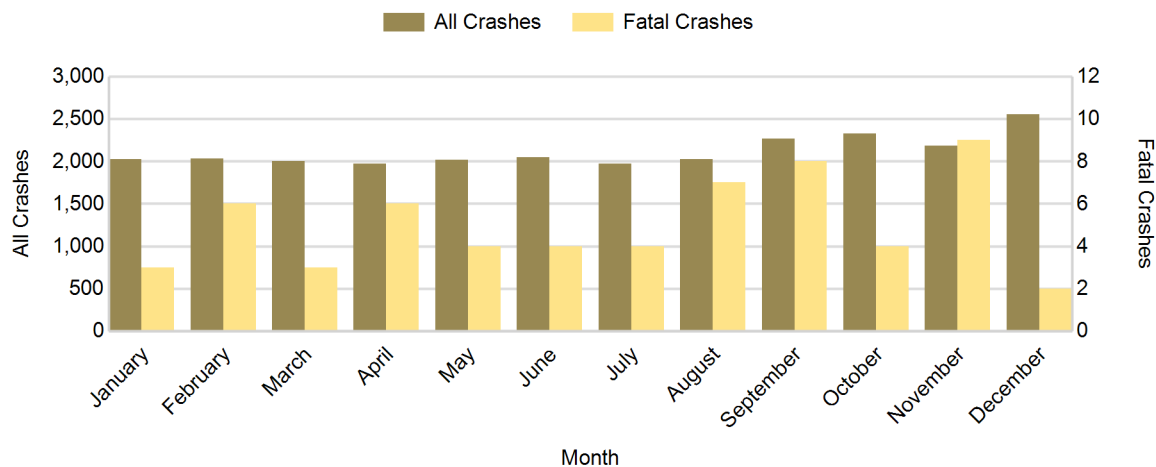
Note: † Indicates that the highest number of total crashes reported in the 5-year period occurred in the same month

## 5-Year Trend - Crashes by Day of Week

Day	2012		2013		2014		2015		2016	
	Total Crashes	Fatal Crashes	Total Crashes	Fatal Crashes	Total Crashes	Fatal Crashes	Total Crashes	Fatal Crashes	Total Crashes	Fatal Crashes
Monday	3,384	8	3,450	6	3,681	4	3,808	5	3,655	6
Tuesday	3,241	7	3,514	10	3,973	2	4,054	4	4,013	7
Wednesday	3,365	5	3,686	5	4,079	5	4,023	8	4,179	17
Thursday	3,338	8	3,756	6	3,825	10	3,724	8	4,040	10
Friday	3,643	9	3,590	3	3,973	3	3,967	15	4,253	8
Saturday	2,652	7	3,150	13	2,768	9	3,053	10	2,930	10
Sunday	2,079	6	2,069	6	2,172	8	2,233	5	2,341	2
<b>Total</b>	<b>21,702</b>	<b>50</b>	<b>23,215</b>	<b>49</b>	<b>24,471</b>	<b>41</b>	<b>24,862</b>	<b>55</b>	<b>25,411</b>	<b>60</b>

Note: † Indicates that the highest number of total crashes reported in the 5-year period occurred on the same day of the week

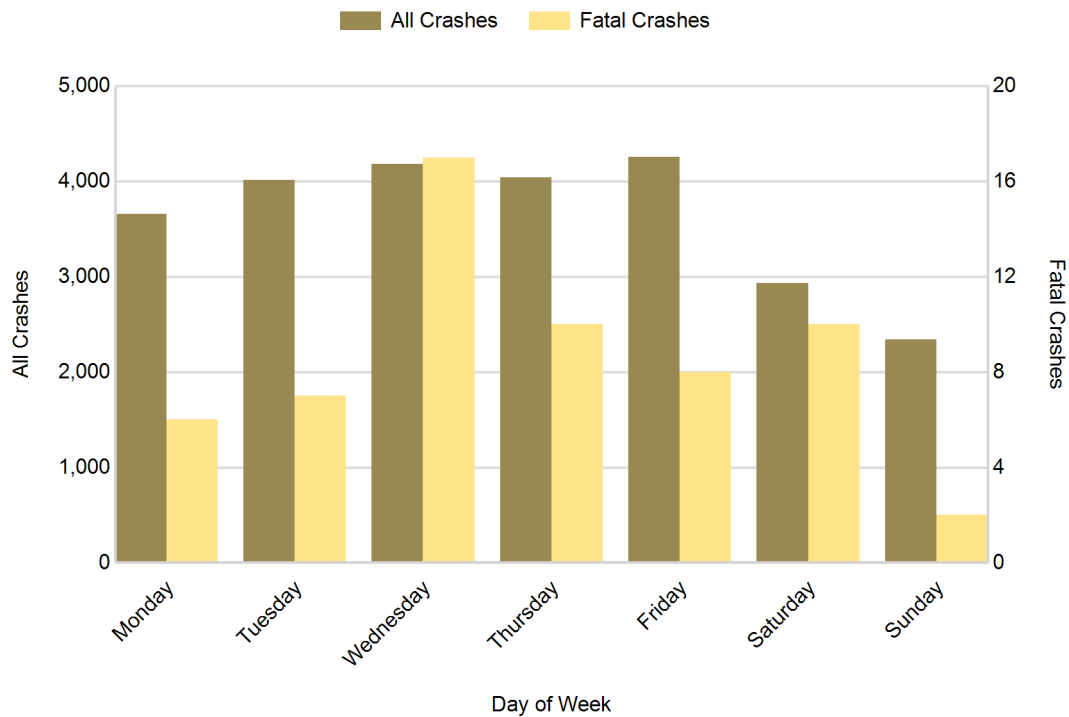
## 2016 Crashes by Month



## 2016 - Crashes by Day of Week

Day	All Crashes		Fatal Crashes		Injury Crashes			PDO Crashes
	Number	% of Total	Number	% of Fatal	A	B	C	Number
Monday	3,655	14.4	6	10.0	32	174	556	2,887
Tuesday	4,013	15.8	7	11.7	48	192	586	3,180
Wednesday	4,179	16.4	17	28.3	47	223	663	3,229
Thursday	4,040	15.9	10	16.7	40	183	613	3,194
Friday	4,253	16.7	8	13.3	47	223	617	3,358
Saturday	2,930	11.5	10	16.7	41	162	446	2,271
Sunday	2,341	9.2	2	3.3	33	148	335	1,823
<b>Total</b>	<b>25,411</b>	<b>100.0</b>	<b>60</b>	<b>100.0</b>	<b>288</b>	<b>1,305</b>	<b>3,816</b>	<b>19,942</b>

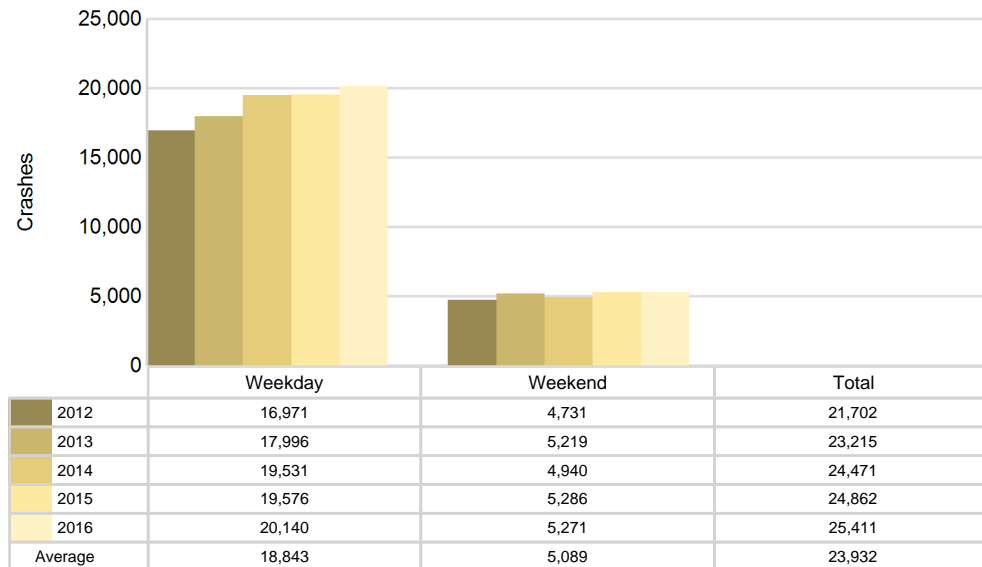
## 2016 Day of Week and Severity



## 5-Year Trend - Crashes by Weekday and Weekend

Portion of Week	2012		2013		2014		2015		2016	
	Total Crashes	Fatal Crashes	Total Crashes	Fatal Crashes	Total Crashes	Fatal Crashes	Total Crashes	Fatal Crashes	Total Crashes	Fatal Crashes
Weekday	16,971	37	17,996	30	19,531	24	19,576	40	20,140	48
Weekend	4,731	13	5,219	19	4,940	17	5,286	15	5,271	12
<b>Total</b>	<b>21,702</b>	<b>50</b>	<b>23,215</b>	<b>49</b>	<b>24,471</b>	<b>41</b>	<b>24,862</b>	<b>55</b>	<b>25,411</b>	<b>60</b>

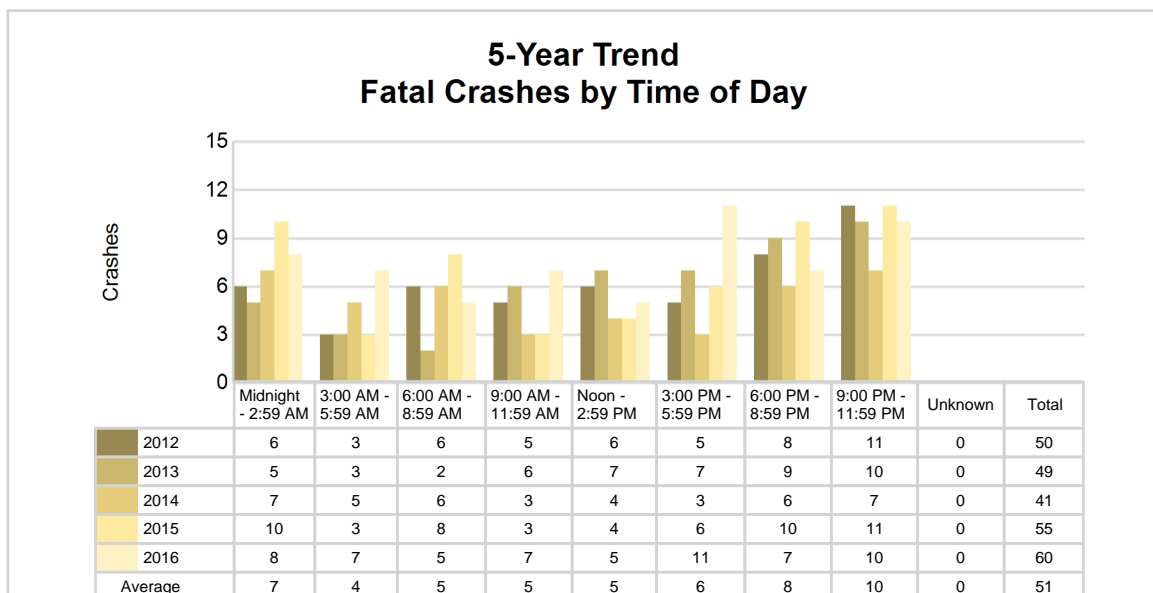
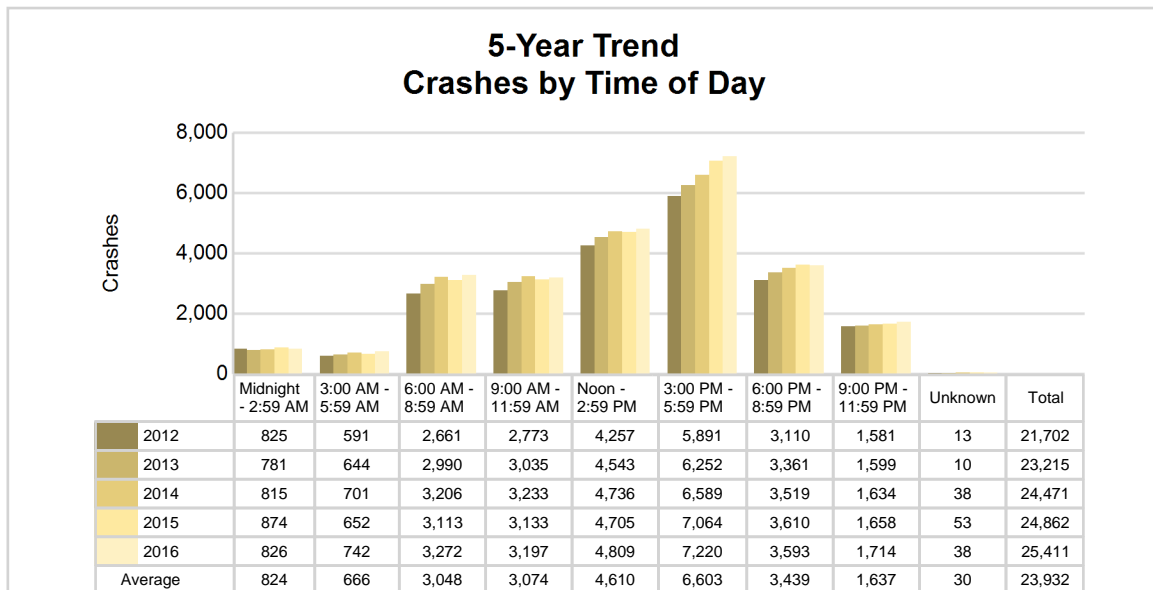
### 5-Year Crash Trends by Weekday (Monday - Friday) and Weekend (Saturday & Sunday)



## 5-Year Trend - Crashes by Time of Day

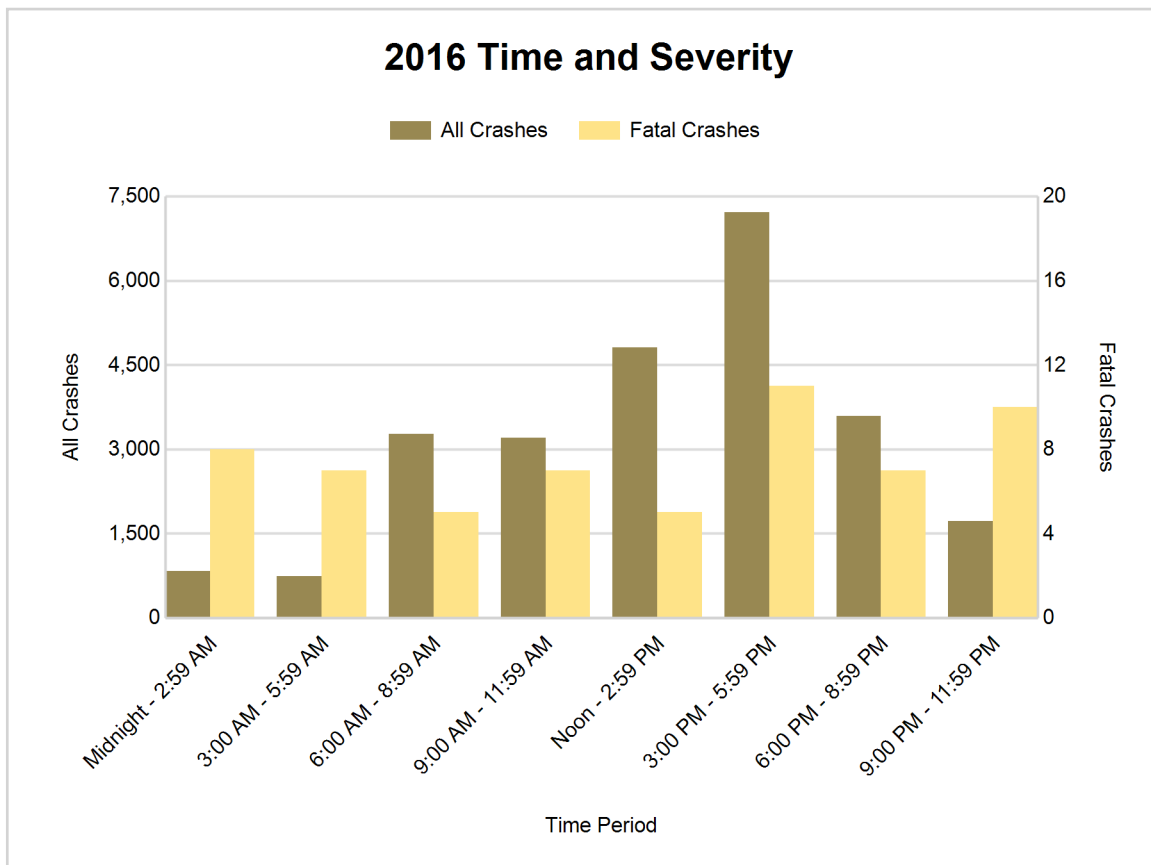
Time of Day	2012		2013		2014		2015		2016	
	Total Crashes	Fatal Crashes	Total Crashes	Fatal Crashes	Total Crashes	Fatal Crashes	Total Crashes	Fatal Crashes	Total Crashes	Fatal Crashes
Midnight - 2:59 AM	825	6	781	5	815	7	874	10	826	8
3:00 AM - 5:59 AM	591	3	644	3	701	5	652	3	742	7
6:00 AM - 8:59 AM	2,661	6	2,990	2	3,206	6	3,113	8	3,272	5
9:00 AM - 11:59 AM	2,773	5	3,035	6	3,233	3	3,133	3	3,197	7
Noon - 2:59 PM	4,257	6	4,543	7	4,736	4	4,705	4	4,809	5
3:00 PM - 5:59 PM	5,891 †	5	6,252 †	7	6,589 †	3	7,064 †	6	7,220 †	11
6:00 PM - 8:59 PM	3,110	8	3,361	9	3,519	6	3,610	10	3,593	7
9:00 PM - 11:59 PM	1,581	11	1,599	10	1,634	7	1,658	11	1,714	10
Unknown	13	0	10	0	38	0	53	0	38	0
<b>Total</b>	<b>21,702</b>	<b>50</b>	<b>23,215</b>	<b>49</b>	<b>24,471</b>	<b>41</b>	<b>24,862</b>	<b>55</b>	<b>25,411</b>	<b>60</b>

Note: † Indicates that the highest number of total crashes reported in the 5-year period occurred in the same time period



## 2016 - Time and Severity

Time of Day	All Crashes		Fatal Crashes		Injury Crashes			PDO Crashes
	Number	% of Total	Number	% of Fatal	A	B	C	Number
Midnight - 2:59 AM	826	3.3	8	13.3	23	73	108	614
3:00 AM - 5:59 AM	742	2.9	7	11.7	12	50	93	580
6:00 AM - 8:59 AM	3,272	12.9	5	8.3	25	149	490	2,603
9:00 AM - 11:59 AM	3,197	12.6	7	11.7	40	172	501	2,477
Noon - 2:59 PM	4,809	18.9	5	8.3	53	228	767	3,756
3:00 PM - 5:59 PM	7,220	28.4	11	18.3	66	319	1,047	5,777
6:00 PM - 8:59 PM	3,593	14.1	7	11.7	36	188	554	2,808
9:00 PM - 11:59 PM	1,714	6.7	10	16.7	33	126	256	1,289
Unknown	38	0.1	0	0.0	0	0	0	38
<b>Total</b>	<b>25,411</b>	<b>100.0</b>	<b>60</b>	<b>100.0</b>	<b>288</b>	<b>1,305</b>	<b>3,816</b>	<b>19,942</b>

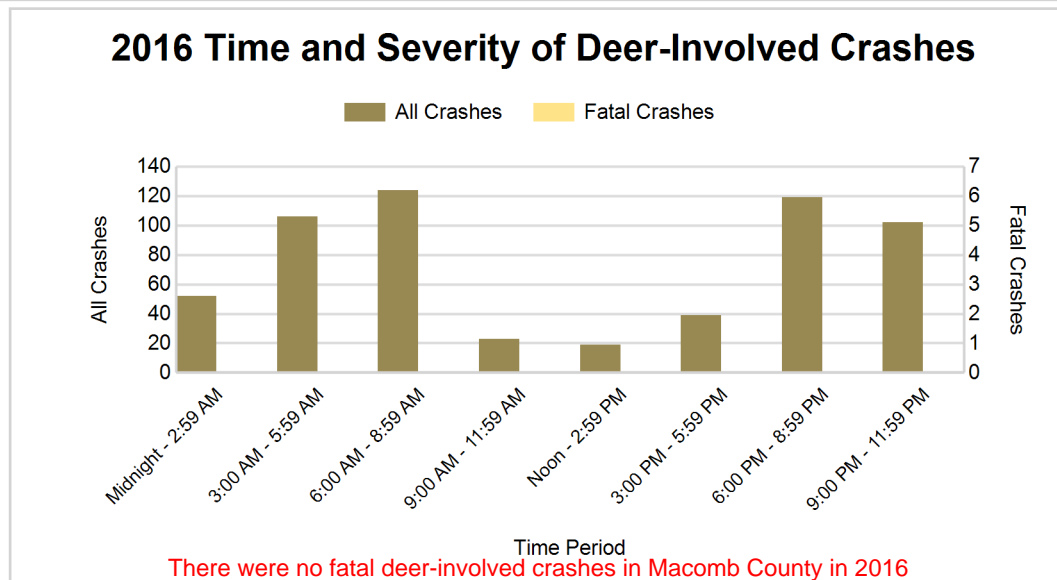
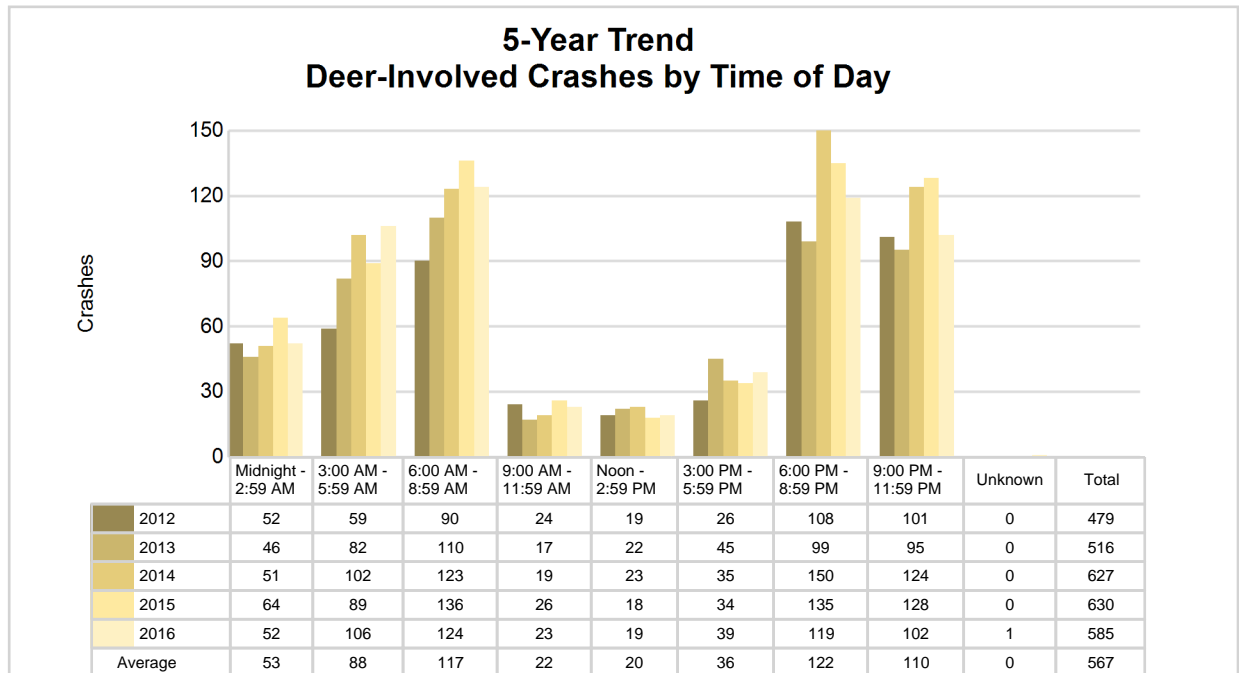




## 5-Year Trend - Deer-Involved Crashes by Time of Day

Time of Day	2012		2013		2014		2015		2016	
	Total Crashes	Fatal Crashes	Total Crashes	Fatal Crashes	Total Crashes	Fatal Crashes	Total Crashes	Fatal Crashes	Total Crashes	Fatal Crashes
Midnight - 2:59 AM	52	0	46	0	51	0	64	0	52	0
3:00 AM - 5:59 AM	59	0	82	0	102	0	89	0	106	0
6:00 AM - 8:59 AM	90	0	110	0	123	0	136	0	124	0
9:00 AM - 11:59 AM	24	0	17	0	19	0	26	0	23	0
Noon - 2:59 PM	19	0	22	0	23	0	18	0	19	0
3:00 PM - 5:59 PM	26	0	45	0	35	0	34	0	39	0
6:00 PM - 8:59 PM	108	0	99	0	150	0	135	0	119	0
9:00 PM - 11:59 PM	101	0	95	0	124	0	128	0	102	0
Unknown	0	0	0	0	0	0	0	0	1	0
<b>Total</b>	<b>479</b>	<b>0</b>	<b>516</b>	<b>0</b>	<b>627</b>	<b>0</b>	<b>630</b>	<b>0</b>	<b>585</b>	<b>0</b>

Note: † Indicates that the highest number of total crashes reported in the 5-year period occurred in the same time period



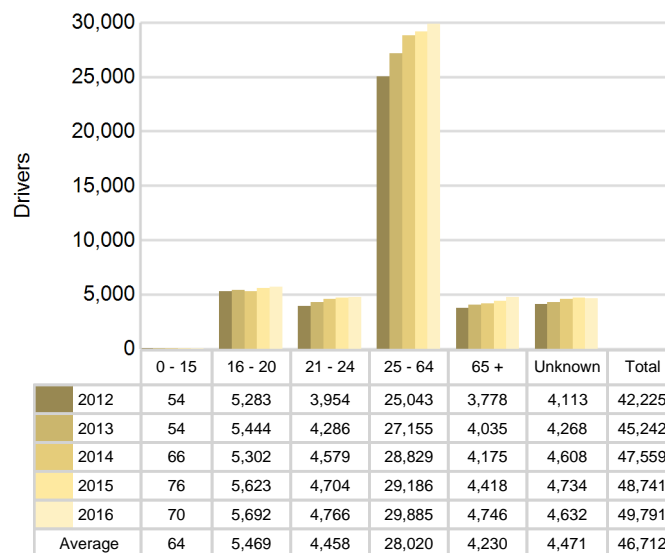
## 2016 - Reported Motor Vehicle Crashes by Municipality

Municipality	Crashes											Persons	
	Total	Fatal	Injury	Property Damage	Inter-state	US Route	State Route	Local Street	Alcohol-Involved	Drug-Involved	Deer-Involved	Fatalities	Injuries
Armada	13	1	3	9	0	0	0	13	1	0	1	1	5
Armada Twp.	127	1	37	89	0	0	0	127	10	1	29	1	43
Bruce Twp.	137	1	23	113	0	0	72	65	5	1	55	2	34
Center Line	346	2	90	254	146	0	127	73	12	10	0	2	120
Chesterfield Twp.	1,189	3	296	890	239	0	514	436	38	20	45	3	437
Clinton Twp.	2,481	4	552	1,925	170	0	800	1,507	61	17	20	5	744
Eastpointe	618	3	136	479	3	0	204	410	37	12	0	3	181
Fraser	443	2	95	346	0	0	154	289	19	4	1	3	139
Grosse Pte. Shores	1	0	0	1	0	0	0	1	0	0	0	0	0
Harrison Twp.	684	4	145	535	314	0	70	300	36	17	15	4	219
Lake Twp.	0	0	0	0	0	0	0	0	0	0	0	0	0
Lenox Twp.	155	0	34	121	18	0	12	125	2	2	35	0	49
Macomb Twp.	1,906	6	404	1,496	0	0	780	1,125	40	12	46	6	580
Memphis	13	0	2	11	0	0	9	4	0	0	0	0	4
Mt. Clemens	531	0	110	421	1	0	302	228	16	6	1	0	136
New Baltimore	204	0	51	153	0	0	129	74	6	2	3	0	67
New Haven	105	1	25	79	0	0	51	54	2	0	3	1	34
Ray Twp.	251	0	57	194	0	0	0	251	7	2	72	0	77
Richmond	124	0	15	109	0	0	81	43	3	1	7	0	19
Richmond Twp.	78	1	19	58	0	0	25	53	4	1	28	1	26
Romeo	103	0	20	83	0	0	34	69	6	1	6	0	26
Roseville	1,944	4	425	1,515	473	0	772	699	57	16	1	4	588
St. Clair Shores	1,452	1	257	1,194	429	0	0	1,023	55	15	1	1	336
Shelby Twp.	1,842	4	391	1,447	0	0	320	1,521	56	24	64	4	530
Sterling Heights	4,891	9	1,041	3,841	0	0	1,100	3,790	90	28	43	9	1,407
Utica	468	0	75	393	0	0	319	148	16	4	2	0	91
Warren	4,689	12	1,001	3,676	875	0	781	3,031	136	72	15	12	1,375
Washington Twp.	616	1	105	510	0	0	202	411	18	4	92	1	137
Unknown Community	0	0	0	0	0	0	0	0	0	0	0	0	0
<b>Total</b>	<b>25,411</b>	<b>60</b>	<b>5,409</b>	<b>19,942</b>	<b>2,668</b>	<b>0</b>	<b>6,858</b>	<b>15,870</b>	<b>733</b>	<b>272</b>	<b>585</b>	<b>63</b>	<b>7,404</b>

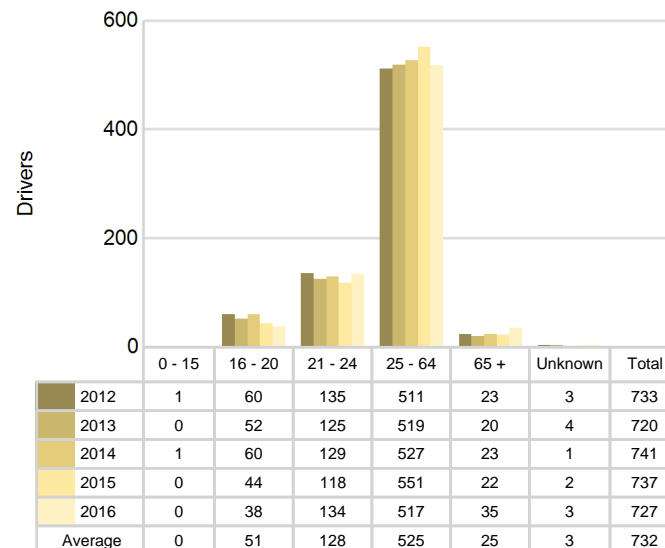
## 5-Year Trend - Drivers in Crashes Coded Drinking by Driver Age

Driver Age	2012		2013		2014		2015		2016	
	Total Drivers in Crashes	Total Drivers Coded Drinking	Total Drivers in Crashes	Total Drivers Coded Drinking	Total Drivers in Crashes	Total Drivers Coded Drinking	Total Drivers in Crashes	Total Drivers Coded Drinking	Total Drivers in Crashes	Total Drivers Coded Drinking
0 - 15	54	1	54	0	66	1	76	0	70	0
16 - 20	5,283	60	5,444	52	5,302	60	5,623	44	5,692	38
21 - 24	3,954	135	4,286	125	4,579	129	4,704	118	4,766	134
25 - 64	25,043	511	27,155	519	28,829	527	29,186	551	29,885	517
65 +	3,778	23	4,035	20	4,175	23	4,418	22	4,746	35
Unknown	4,113	3	4,268	4	4,608	1	4,734	2	4,632	3
<b>Total</b>	<b>42,225</b>	<b>733</b>	<b>45,242</b>	<b>720</b>	<b>47,559</b>	<b>741</b>	<b>48,741</b>	<b>737</b>	<b>49,791</b>	<b>727</b>

**5-Year Trend  
Total Drivers in Crashes by Age**



**5-Year Trend  
Total Drivers Coded Drinking by Age**



**2016 - Bodily Alcohol Concentration (BAC) Results Among All Vehicle Drivers in Alcohol-Involved Crashes by Age**

Age Group	Drivers				BAC Result Range for Drivers Coded Drinking				
	Total Drivers in Alcohol-Involved Crashes	Total Drivers Tested in all Crashes	Total Drivers Coded Drinking, Tested	Total Drivers Coded Drinking	BAC = 0.00	BAC 0.01 g/dL to 0.07 g/dL	BAC 0.08 g/dL to 0.16 g/dL	BAC 0.17 g/dL and Above	BAC Not Reported
0 - 15	0	0	0	0	0	0	0	0	0
16 - 20	79	54	30	38	3	4	9	7	15
21 - 24	167	142	119	134	6	10	36	40	42
25 - 64	817	569	452	517	7	33	126	183	168
65 +	82	42	31	35	0	4	11	10	10
Unknown	149	3	0	3	0	0	0	0	3
<b>Total</b>	<b>1,294</b>	<b>810</b>	<b>632</b>	<b>727</b>	<b>16</b>	<b>51</b>	<b>182</b>	<b>240</b>	<b>238</b>

Notes: BAC measured in grams (g) per deciliter (dL).

BAC may not be reported if drivers are not tested or if the results are not available immediately (as in the case of a blood test).

A driver may be coded by the officer as drinking even though no test is administered.

**Alcohol-Involved Crashes**

In 2016, there were 1,294 drivers in alcohol-involved crashes; 727 (56.2%) of those drivers were coded as had-been-drinking by the officer on the crash form.

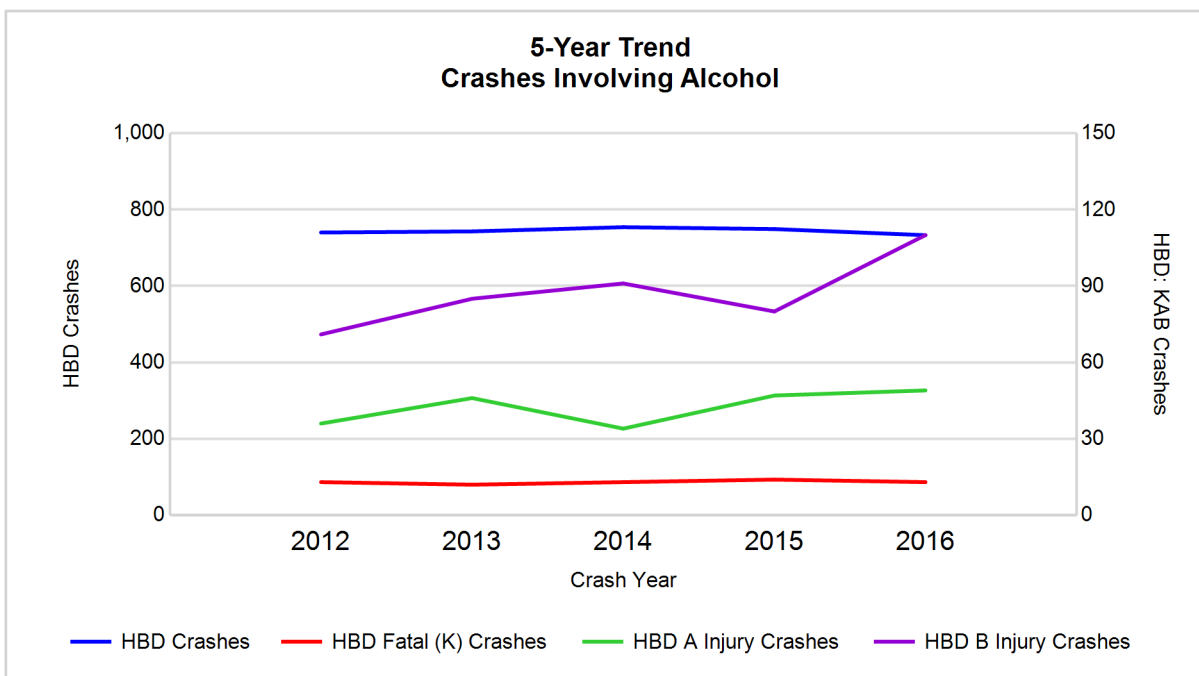
- 422 (58.0%) of the 727 drivers had a blood alcohol concentration (BAC) of 0.08 g/dL (grams per deciliter) or greater, and 240 (56.9%) of the 422 drivers had a BAC at or above 0.17 g/dL.
- 632 (86.9%) of the 727 drivers were coded as had-been-drinking and were tested for alcohol consumption.

**5-Year Trend - Crashes Involving Alcohol**

Year	All Crashes	HBD Crashes	% HBD	Fatal Crashes	HBD Fatal Crashes	% HBD	A Injury Crashes	HBD A Injury Crashes	% HBD	B Injury Crashes	HBD B Injury Crashes	% HBD
2012	21,702	740	3.4	50	13	26.0	297	36	12.1	1,106	71	6.4
2013	23,215	743	3.2	49	12	24.5	284	46	16.2	1,158	85	7.3
2014	24,471	754	3.1	41	13	31.7	243	34	14.0	1,210	91	7.5
2015	24,862	749	3.0	55	14	25.5	284	47	16.5	1,100	80	7.3
2016	25,411**	733*	2.9*	60**	13	21.7*	288	49**	17.0**	1,305**	110**	8.4**

Note: \* Indicates that the most recent year is the lowest number or percentage reported in the 5-year period in that column

\*\* Indicates that the most recent year is the highest number or percentage reported in the 5-year period in that column



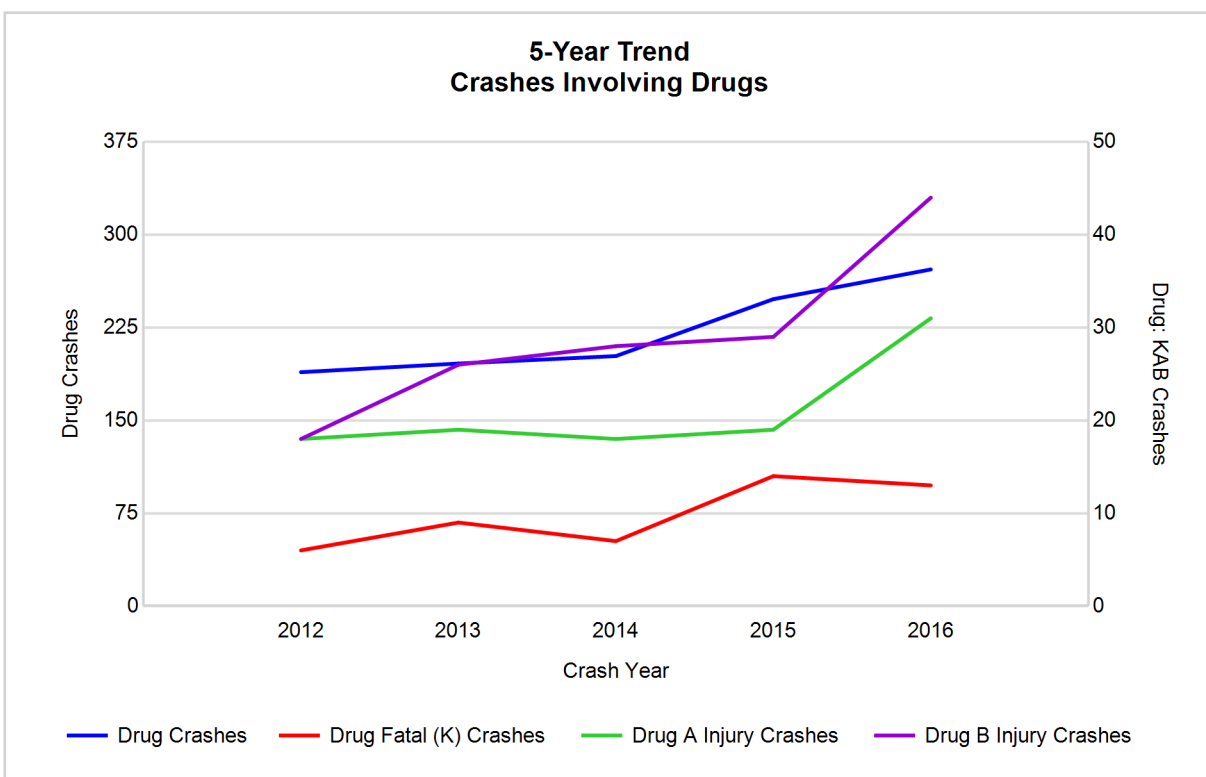
Note: Had-Been-Drinking (HBD)

## 5-Year Trend - Crashes Involving Drugs

Year	All Crashes	Drug Crashes	% Drug	Fatal Crashes	Drug Fatal Crashes	% Drug	A Injury Crashes	Drug A Injury Crashes	% Drug	B Injury Crashes	Drug B Injury Crashes	% Drug
2012	21,702	189	0.9	50	6	12.0	297	18	6.1	1,106	18	1.6
2013	23,215	196	0.8	49	9	18.4	284	19	6.7	1,158	26	2.2
2014	24,471	202	0.8	41	7	17.1	243	18	7.4	1,210	28	2.3
2015	24,862	248	1.0	55	14	25.5	284	19	6.7	1,100	29	2.6
2016	25,411**	272**	1.1**	60**	13	21.7	288	31**	10.8**	1,305**	44**	3.4**

Note: \* Indicates that the most recent year is the lowest number or percentage reported in the 5-year period in that column

\*\* Indicates that the most recent year is the highest number or percentage reported in the 5-year period in that column

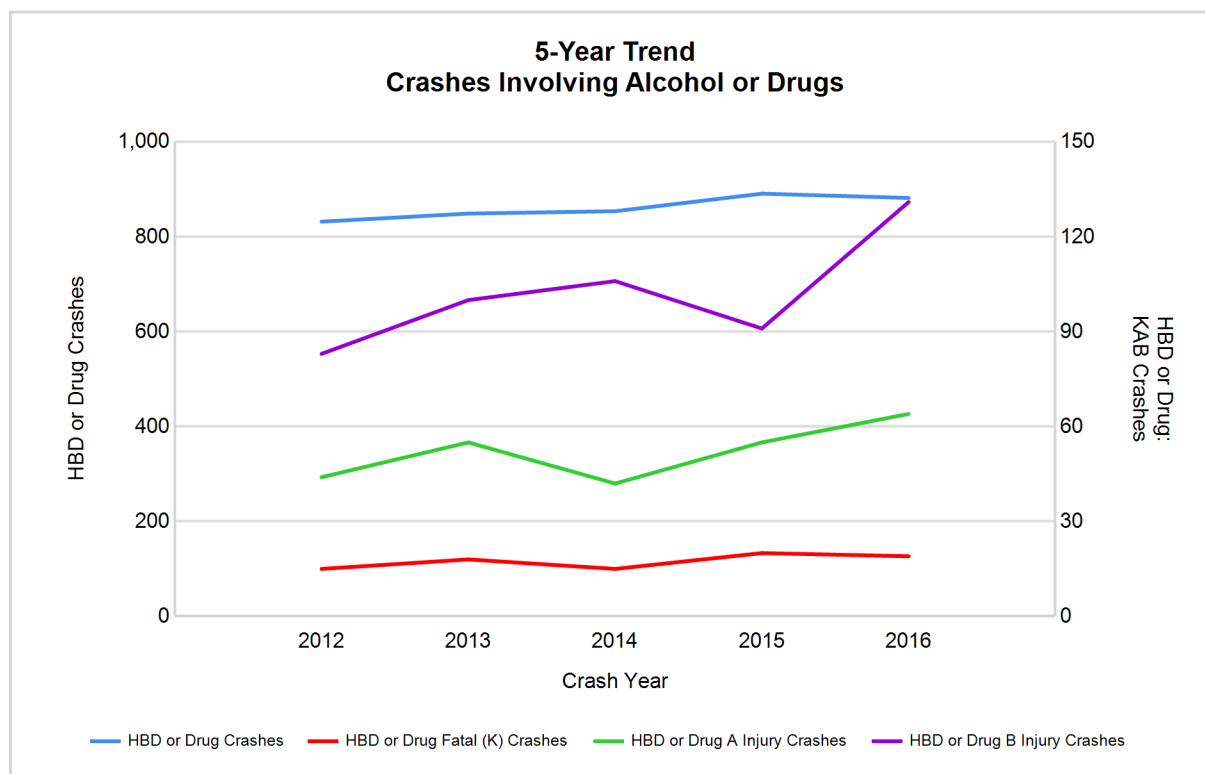


## 5-Year Trend - Crashes Involving Alcohol or Drugs

Year	All Crashes	HBD or Drug Crashes	% HBD or Drug	Fatal Crashes	HBD or Drug Fatal Crashes	% HBD or Drug	A Injury Crashes	HBD or Drug A Injury Crashes	% HBD or Drug	B Injury Crashes	HBD or Drug B Injury Crashes	% HBD or Drug
2012	21,702	832	3.8	50	15	30.0	297	44	14.8	1,106	83	7.5
2013	23,215	849	3.7	49	18	36.7	284	55	19.4	1,158	100	8.6
2014	24,471	854	3.5	41	15	36.6	243	42	17.3	1,210	106	8.8
2015	24,862	891	3.6	55	20	36.4	284	55	19.4	1,100	91	8.3
2016	25,411**	882	3.5	60**	19	31.7	288	64**	22.2**	1,305**	131**	10.0**

Note: \* Indicates that the most recent year is the lowest number or percentage reported in the 5-year period in that column

\*\* Indicates that the most recent year is the highest number or percentage reported in the 5-year period in that column



Note: Had-Been-Drinking (HBD)

## 2016 - Restraints Worn Among Vehicle Drivers and Injured Passengers by Vehicle Type

Vehicle Type	Total Occupants			Fatalities			A - Suspected Serious			B - Suspected Minor			C - Possible Injury			No Injury		
	Total	Used Restraint	%	Total	Used Restraint	%	Total	Used Restraint	%	Total	Used Restraint	%	Total	Used Restraint	%	Total	Used Restraint	%
Passenger car, SUV, van	42,839	38,475	89.8	29	17	58.6	248	193	77.8	1,311	1,189	90.7	4,684	4,515	96.4	33,392	32,542	97.5
Motor home	1,017	904	88.9	0	0	0.0	3	3	100.0	29	25	86.2	124	121	97.6	776	755	97.3
Pickup truck	4,856	4,251	87.5	4	3	75.0	21	16	76.2	86	75	87.2	319	310	97.2	3,959	3,847	97.2
Small truck under 10,000 lbs. GVWR	359	307	85.5	0	0	0.0	1	1	100.0	5	4	80.0	30	27	90.0	286	275	96.2
Motorcycle	233	155	66.5	8	5	62.5	32	19	59.4	59	40	67.8	69	51	73.9	57	39	68.4
Moped / goped	20	3	15.0	1	0	0.0	1	0	0.0	7	1	14.3	4	1	25.0	5	1	20.0
Go-cart / golf cart	1	0	0.0	0	0	0.0	0	0	0.0	1	0	0.0	0	0	0.0	0	0	0.0
Snowmobile	0	0	0.0	0	0	0.0	0	0	0.0	0	0	0.0	0	0	0.0	0	0	0.0
Off-Road Vehicle - ORV / All-Terrain Vehicle - ATV	8	3	37.5	0	0	0.0	1	0	0.0	4	1	25.0	1	1	100.0	1	1	100.0
Other	155	94	60.6	0	0	0.0	2	0	0.0	2	1	50.0	3	3	100.0	105	90	85.7
Truck/bus over 10,000 lbs.	1,007	905	89.9	1	1	100.0	0	0	0.0	5	3	60.0	30	18	60.0	916	883	96.4
Unknown	914	18	2.0	0	0	0.0	0	0	0.0	0	0	0.0	1	1	100.0	30	14	46.7
<b>Total</b>	<b>51,409</b>	<b>45,115</b>	<b>87.8</b>	<b>43</b>	<b>26</b>	<b>0.0</b>	<b>309</b>	<b>232</b>	<b>75.1</b>	<b>1,509</b>	<b>1,339</b>	<b>88.7</b>	<b>5,265</b>	<b>5,048</b>	<b>95.9</b>	<b>39,527</b>	<b>38,447</b>	<b>97.3</b>

Note: Restraint Use includes shoulder belt only used, lap belt only used, both lap and shoulder belts used, child restraint used, restraint failure, and helmet worn.

## 2016 - Restraints Worn Among Vehicle Drivers and Injured Passengers by Age

Age Group	Total Occupants			Fatalities			A - Suspected Serious			B - Suspected Minor			C - Possible Injury			No Injury		
	Total	Used Restraint	%	Total	Used Restraint	%	Total	Used Restraint	%	Total	Used Restraint	%	Total	Used Restraint	%	Total	Used Restraint	%
0 - 15	474	432	91.1	0	0	0.0	11	8	72.7	80	65	81.3	316	297	94.0	66	62	93.9
16 - 20	5,930	5,699	96.1	3	1	33.3	38	24	63.2	192	167	87.0	599	566	94.5	5,061	4,939	97.6
21 - 24	4,914	4,684	95.3	3	1	33.3	40	27	67.5	194	155	79.9	510	476	93.3	4,143	4,022	97.1
25 - 64	30,528	29,449	96.5	21	13	61.9	179	137	76.5	846	765	90.4	3,241	3,123	96.4	26,102	25,403	97.3
65 +	4,928	4,823	97.9	16	11	68.8	41	36	87.8	197	187	94.9	599	586	97.8	4,063	4,002	98.5
Unknown	4,635	28	0.6	0	0	0.0	0	0	0.0	0	0	0.0	0	0	0.0	92	19	20.7
<b>Total</b>	<b>51,409</b>	<b>45,115</b>	<b>87.8</b>	<b>43</b>	<b>26</b>	<b>0.0</b>	<b>309</b>	<b>232</b>	<b>75.1</b>	<b>1,509</b>	<b>1,339</b>	<b>88.7</b>	<b>5,265</b>	<b>5,048</b>	<b>95.9</b>	<b>39,527</b>	<b>38,447</b>	<b>97.3</b>

Note: Restraint Use includes shoulder belt only used, lap belt only used, both lap and shoulder belts used, child restraint used, restraint failure, and helmet worn.

## 5-Year Trend - Restraint Use Among Drivers

Restraint Use	2012			2013			2014			2015			2016		
	Drivers	Fatal Drivers	Injured Drivers	Drivers	Fatal Drivers	Injured Drivers	Drivers	Fatal Drivers	Injured Drivers	Drivers	Fatal Drivers	Injured Drivers	Drivers	Fatal Drivers	Injured Drivers
No belts available	165	0	18	81	0	7	47	1	8	152	1	22	66	0	13
Shoulder belt only used	27	0	3	31	0	2	17	0	2	16	0	2	100	0	18
Lap belt only used	38	0	6	54	0	9	49	0	6	94	0	15	56	0	7
Both lap & shoulder belts used	36,770	15	4,500	39,628	14	4,612	41,749	14	4,917	42,310	16	5,063	43,369	17	5,064
No belts used	209	6	91	201	6	97	150	3	65	175	9	67	198	3	88
Child restraint used	0	0	0	0	0	0	0	0	0	0	0	0	4	0	1
Child restraint not used, unavailable or improper use	1	0	0	0	0	0	1	0	0	3	0	1	1	0	0
Restraint failure	2	0	1	0	0	0	1	0	0	2	0	0	2	0	0
Restraint use unknown	4,006	1	76	4,210	5	84	4,454	4	93	3,894	3	153	4,648	6	130
Helmet worn	179	3	136	176	9	130	133	3	101	168	5	127	159	5	112
Helmet not worn	65	5	46	72	3	58	66	2	52	87	3	67	74	3	54
Helmet use unknown	5	0	2	8	0	4	15	2	7	11	0	4	15	1	5
Uncoded & errors	758	0	1	781	0	0	877	0	0	1,829	0	2	1,099	0	0
<b>Total</b>	<b>42,225</b>	<b>30</b>	<b>4,880</b>	<b>45,242</b>	<b>37</b>	<b>5,003</b>	<b>47,559</b>	<b>29</b>	<b>5,251</b>	<b>48,741</b>	<b>37</b>	<b>5,523</b>	<b>49,791</b>	<b>35</b>	<b>5,492</b>

## 5-Year Trend - Restraint Use Among Drivers Coded Drinking

Restraint Use	2012			2013			2014			2015			2016		
	Drivers	Fatal Drivers	Injured Drivers	Drivers	Fatal Drivers	Injured Drivers	Drivers	Fatal Drivers	Injured Drivers	Drivers	Fatal Drivers	Injured Drivers	Drivers	Fatal Drivers	Injured Drivers
No belts available	5	0	1	3	0	1	1	0	0	6	0	2	1	0	1
Shoulder belt only used	0	0	0	1	0	0	1	0	1	0	0	0	1	0	0
Lap belt only used	0	0	0	0	0	0	1	0	0	0	0	0	0	0	0
Both lap & shoulder belts used	563	2	102	563	0	111	604	1	127	565	3	105	576	3	141
No belts used	42	1	20	38	2	27	25	2	13	30	2	18	33	0	17
Child restraint used	0	0	0	0	0	0	0	0	0	0	0	0	0	0	0
Child restraint not used, unavailable or improper use	0	0	0	0	0	0	0	0	0	0	0	0	0	0	0
Restraint failure	0	0	0	0	0	0	0	0	0	0	0	0	0	0	0
Restraint use unknown	105	0	21	108	2	25	97	1	22	123	1	38	98	2	25
Helmet worn	10	1	6	1	0	1	3	0	2	6	0	6	10	0	9
Helmet not worn	7	2	4	5	1	4	9	0	8	7	0	7	7	1	6
Helmet use unknown	0	0	0	1	0	0	0	0	0	0	0	0	1	0	1
Uncoded & errors	1	0	0	0	0	0	0	0	0	0	0	0	0	0	0
<b>Total</b>	<b>733</b>	<b>6</b>	<b>154</b>	<b>720</b>	<b>5</b>	<b>169</b>	<b>741</b>	<b>4</b>	<b>173</b>	<b>737</b>	<b>6</b>	<b>176</b>	<b>727</b>	<b>6</b>	<b>200</b>

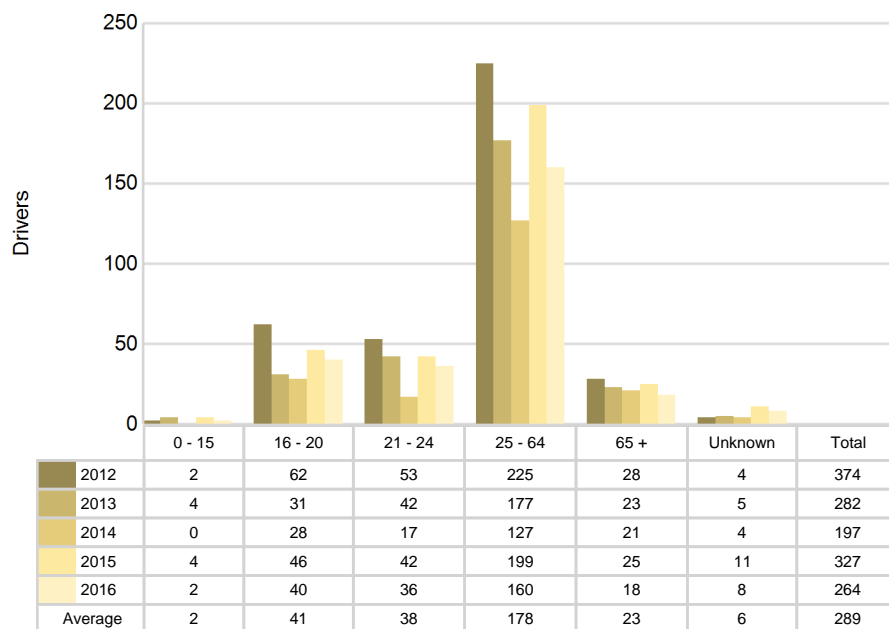


## 5-Year Trend - Seatbelt Not Used Among Drivers by Age

Age Group	2012			2013			2014			2015			2016		
	Drivers	Fatal Drivers	Injured Drivers	Drivers	Fatal Drivers	Injured Drivers	Drivers	Fatal Drivers	Injured Drivers	Drivers	Fatal Drivers	Injured Drivers	Drivers	Fatal Drivers	Injured Drivers
0 - 15	2	0	0	4	0	2	0	0	0	4	0	0	2	0	0
16 - 20	62	2	18	31	0	11	28	0	7	46	2	13	40	1	22
21 - 24	53	1	18	42	2	20	17	1	4	42	1	14	36	0	23
25 - 64	225	2	62	177	3	63	127	1	55	199	6	55	160	1	47
65 +	28	1	11	23	1	8	21	2	7	25	1	7	18	1	9
Unknown	4	0	0	5	0	0	4	0	0	11	0	0	8	0	0
<b>Total</b>	<b>374</b>	<b>6</b>	<b>109</b>	<b>282</b>	<b>6</b>	<b>104</b>	<b>197</b>	<b>4</b>	<b>73</b>	<b>327</b>	<b>10</b>	<b>89</b>	<b>264</b>	<b>3</b>	<b>101</b>

Note: Seatbelt Not Used includes no belts available or no belts used.

## 5-Year Trend Driver Seatbelt Not Used

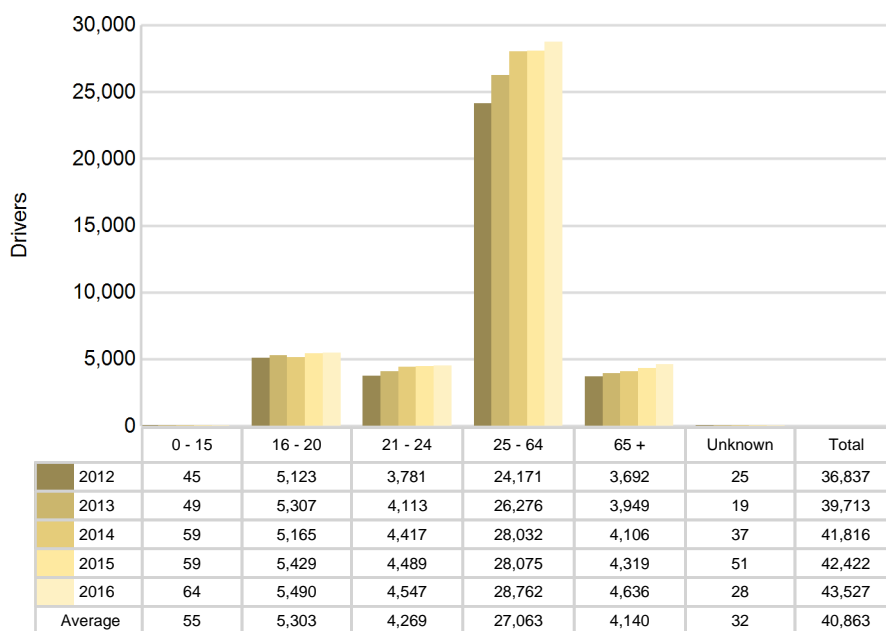


## 5-Year Trend - Seatbelt Used Among Drivers by Age

Age Group	2012			2013			2014			2015			2016		
	Drivers	Fatal Drivers	Injured Drivers	Drivers	Fatal Drivers	Injured Drivers	Drivers	Fatal Drivers	Injured Drivers	Drivers	Fatal Drivers	Injured Drivers	Drivers	Fatal Drivers	Injured Drivers
0 - 15	45	0	4	49	0	2	59	0	9	59	0	9	64	0	3
16 - 20	5,123	1	553	5,307	1	528	5,165	0	506	5,429	2	567	5,490	1	555
21 - 24	3,781	1	467	4,113	1	481	4,417	0	531	4,489	1	508	4,547	0	526
25 - 64	24,171	9	2,962	26,276	6	3,100	28,032	10	3,334	28,075	8	3,378	28,762	9	3,376
65 +	3,692	4	521	3,949	6	509	4,106	4	543	4,319	5	618	4,636	7	629
Unknown	25	0	3	19	0	3	37	0	2	51	0	0	28	0	0
<b>Total</b>	<b>36,837</b>	<b>15</b>	<b>4,510</b>	<b>39,713</b>	<b>14</b>	<b>4,623</b>	<b>41,816</b>	<b>14</b>	<b>4,925</b>	<b>42,422</b>	<b>16</b>	<b>5,080</b>	<b>43,527</b>	<b>17</b>	<b>5,089</b>

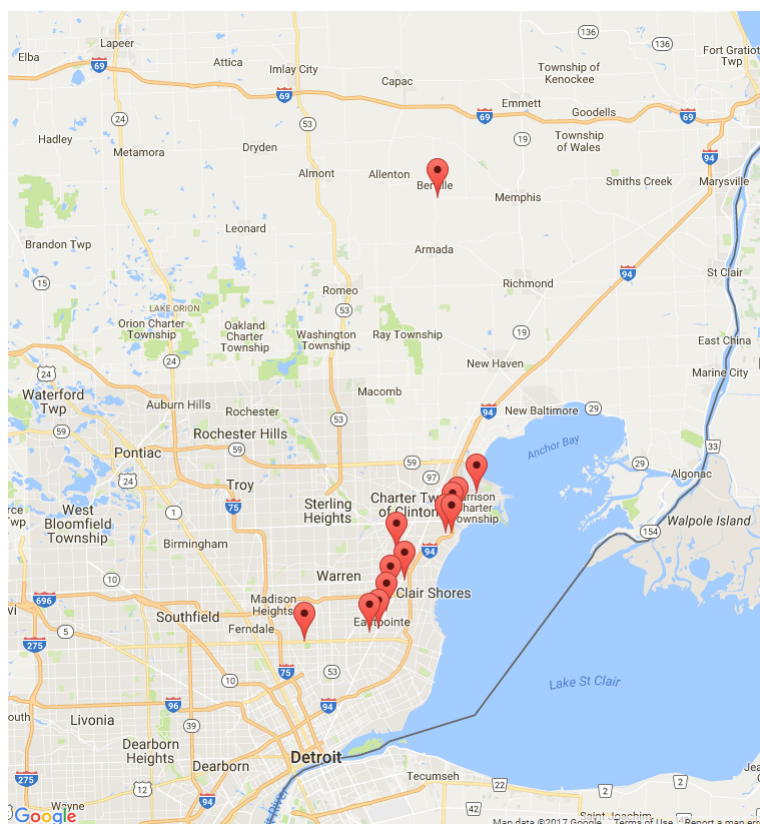
Note: Seatbelt Used includes shoulder belt only used, lap belt only used, both lap and shoulder belts used, and restraint failure.

### 5-Year Trend Driver Seatbelt Used



## 5-Year Trend - Drivers in Crashes by Hazardous Action

Hazardous Action	2012		2013		2014		2015		2016	
	Total Drivers in Crashes	Drivers in Fatal Crashes	Total Drivers in Crashes	Drivers in Fatal Crashes	Total Drivers in Crashes	Drivers in Fatal Crashes	Total Drivers in Crashes	Drivers in Fatal Crashes	Total Drivers in Crashes	Drivers in Fatal Crashes
None	19,475	45	21,044	39	22,089	30	23,624	38	23,819	52
Speed too fast	1,042	3	1,216	6	1,418	1	983	6	1,073	8
Speed too slow	8	0	9	0	5	0	16	0	10	0
Failed to yield	4,262	5	4,675	9	4,775	4	5,032	7	5,299	5
Disregard traffic control	799	11	821	2	796	4	846	2	873	6
Drove wrong way	21	0	14	0	32	1	23	0	39	0
Drove left of center	174	2	162	2	208	3	199	3	212	5
Improper passing	143	0	168	0	159	1	168	0	177	1
Improper lane use	877	0	963	0	1,067	0	1,192	3	1,273	0
Improper turn	367	0	360	1	407	0	482	1	411	0
Improper/no signal	30	0	42	0	27	0	39	0	34	0
Improper backing	639	0	648	0	684	1	727	0	745	0
Unable to stop in assured clear distance	7,466	4	7,876	2	8,254	0	8,769	3	9,066	6
Other	1,733	4	1,829	4	2,070	4	1,892	4	1,758	3
Unknown	2,547	7	2,484	10	2,680	13	2,208	10	2,460	9
Reckless driving	179	5	168	4	149	1	157	2	166	0
Careless/negligent driving	1,220	7	1,296	4	1,221	5	1,377	6	1,340	4
Uncoded & errors	1,243	0	1,467	0	1,518	0	1,007	0	1,036	0
<b>Total</b>	<b>42,225</b>	<b>93</b>	<b>45,242</b>	<b>83</b>	<b>47,559</b>	<b>68</b>	<b>48,741</b>	<b>85</b>	<b>49,791</b>	<b>99</b>



The picture above represents all 2016 alcohol-involved fatal crashes in Macomb County.

In 2016, there were 733 alcohol-involved crashes in Macomb County:

13 K - Fatal Crashes

49 A - Suspected Serious Injury Crashes

110 B - Suspected Minor Injury Crashes

142 C - Possible Injury Crashes

419 O - Property Damage Only/No Injury Crashes

### Office of Highway Safety Planning

Physical Address:  
7150 Harris Drive  
Dimondale, Michigan 48821

Mailing Address:  
P.O. Box 30634  
Lansing, Michigan 48909

Phone: (517) 284-3112  
Fax: (517) 284-3151

Find us on the web:  
[MichiganTrafficCrashFacts.org](http://MichiganTrafficCrashFacts.org)

