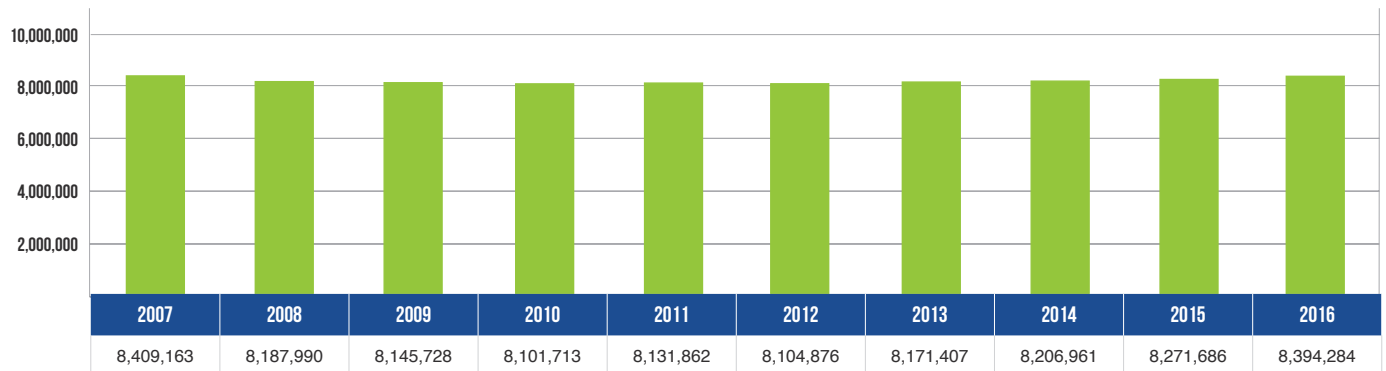


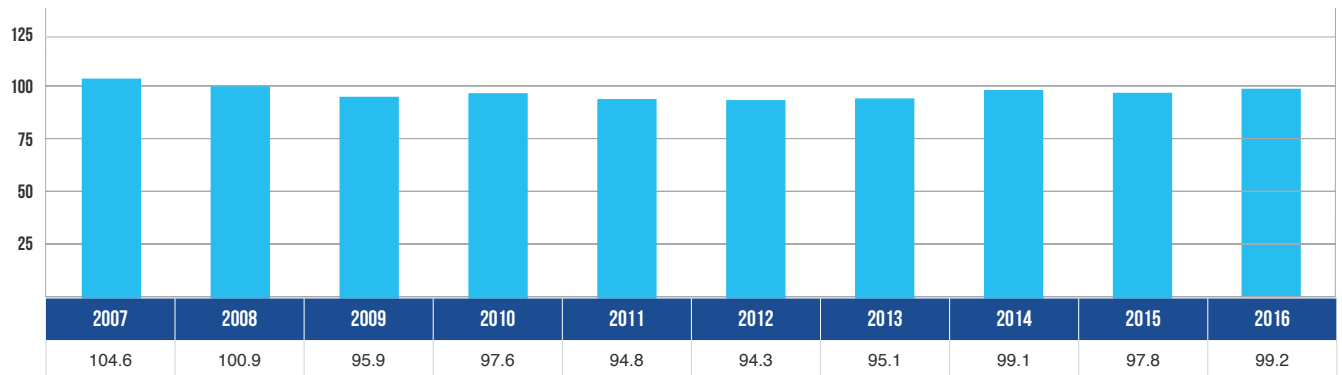
10 YEAR TRENDS-STATEWIDE

VEHICLE REGISTRATIONS



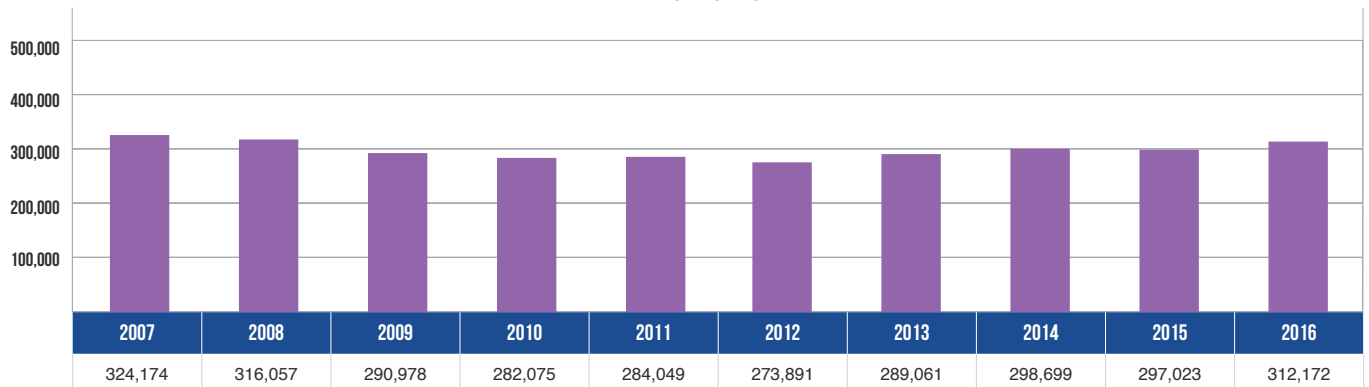
Vehicle registrations decreased 0.2 percent over the 10-year period.

VEHICLE MILES TRAVELED (BILLIONS)



Vehicle miles traveled decreased 5.2 percent over the 10-year period.

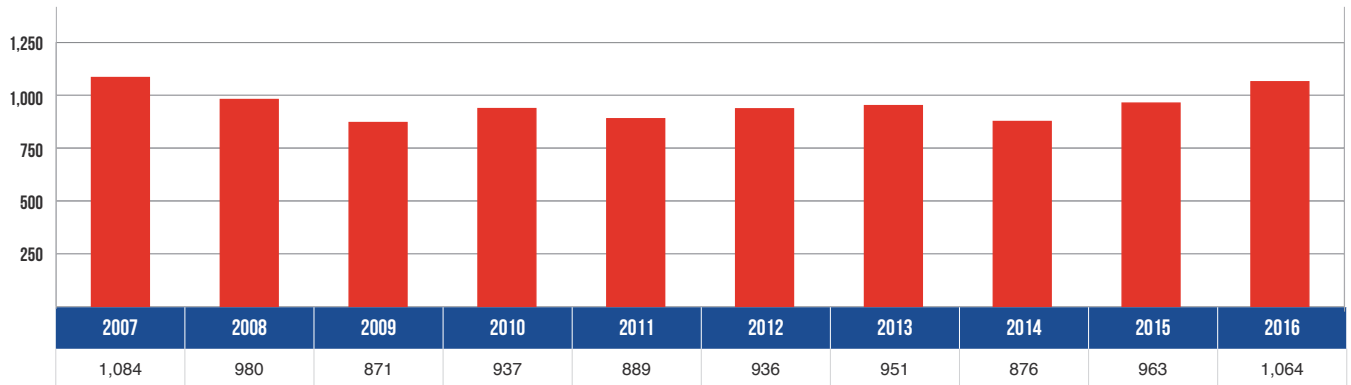
CRASHES



There were 312,172 total crashes statewide in 2016 – a 3.7 percent decrease from 2007.

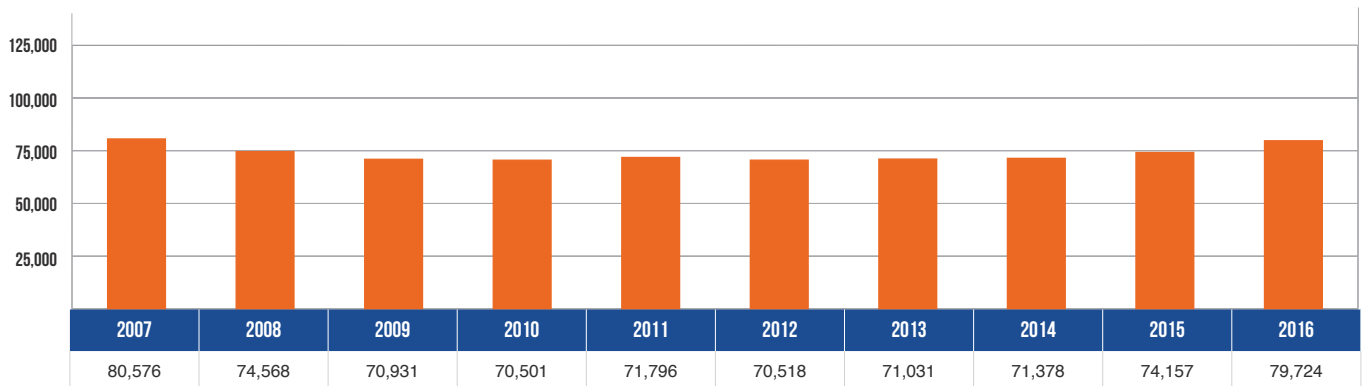
10 YEAR TRENDS-STATEWIDE (CONTINUED)

DEATHS



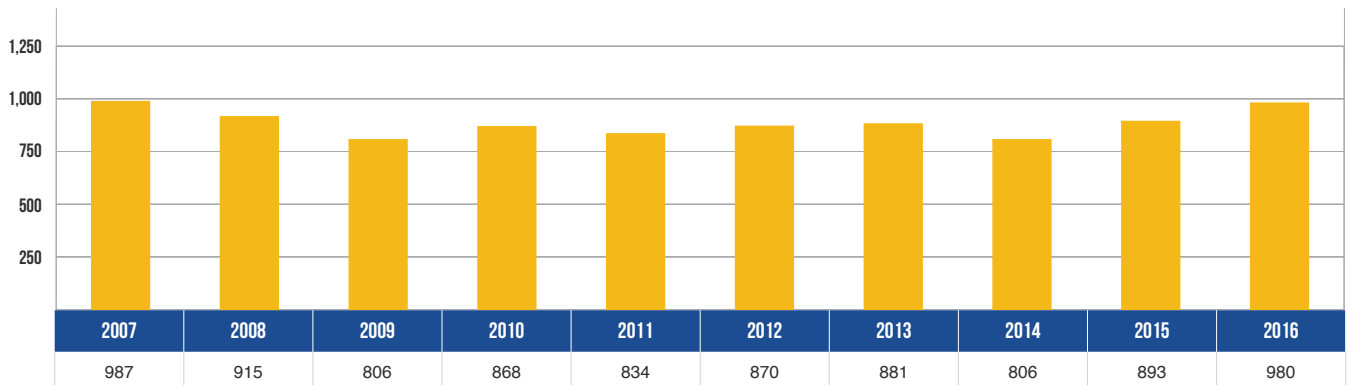
In 2016, 1,064 people died in motor vehicle crashes – a decrease of 1.8 percent from 2007.

INJURIES



In 2016, 79,724 people received injuries in motor vehicle crashes – down 1.1 percent from 80,576 in 2007.

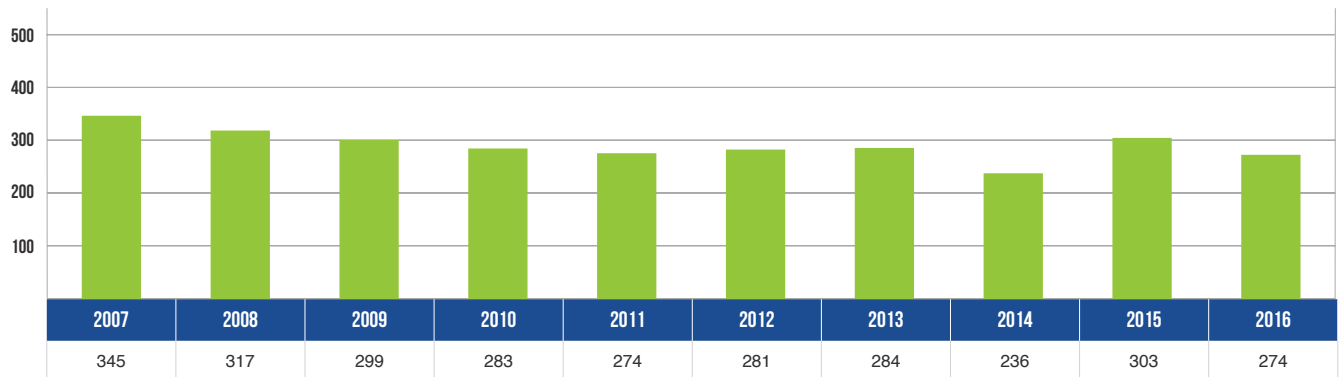
FATAL CRASHES



In 2016, there were 980 fatal crashes – down 0.7 percent from 987 in 2007.

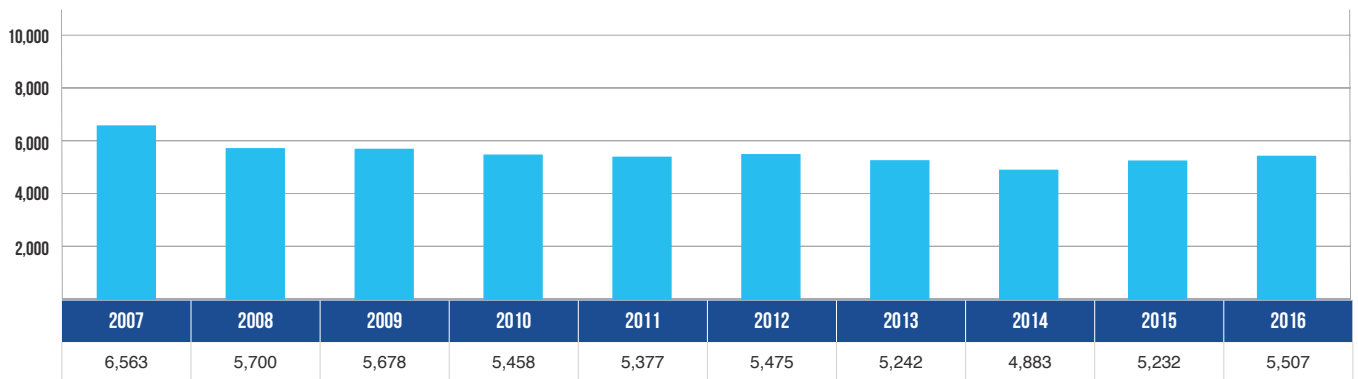
10 YEAR TRENDS-STATEWIDE (CONTINUED)

ALCOHOL-INVOLVED DEATHS



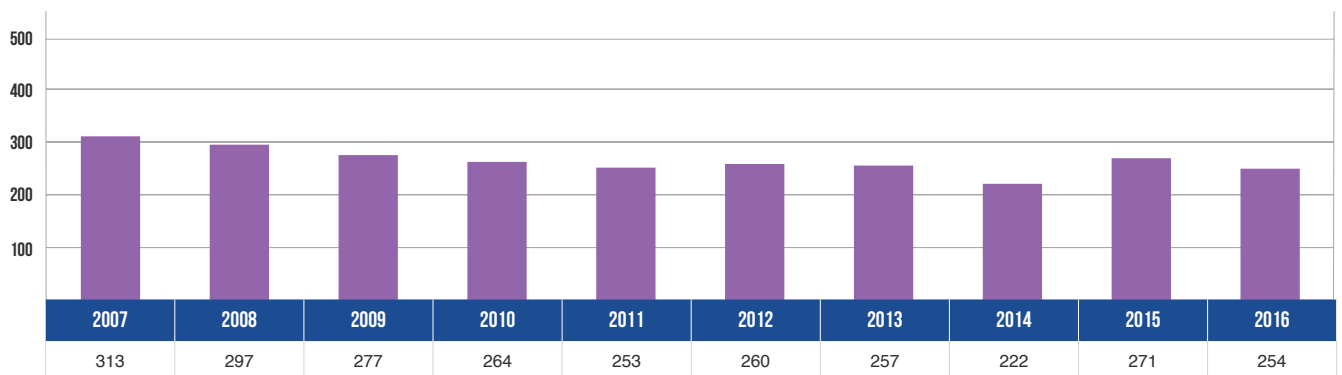
There were 274 deaths in alcohol-involved crashes in 2016 – down 20.6 percent from 2007.

ALCOHOL-INVOLVED INJURIES



There were 5,507 injuries in alcohol-involved crashes in 2016 – down 16.1 percent from 2007.

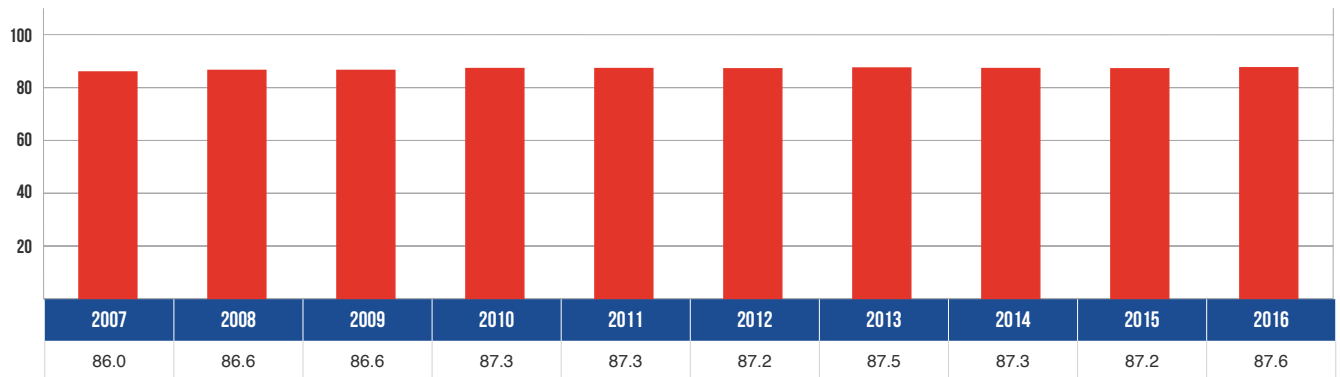
ALCOHOL-INVOLVED FATAL CRASHES



There were 254 alcohol-involved fatal crashes in 2016 – down 18.8 percent from 2007.

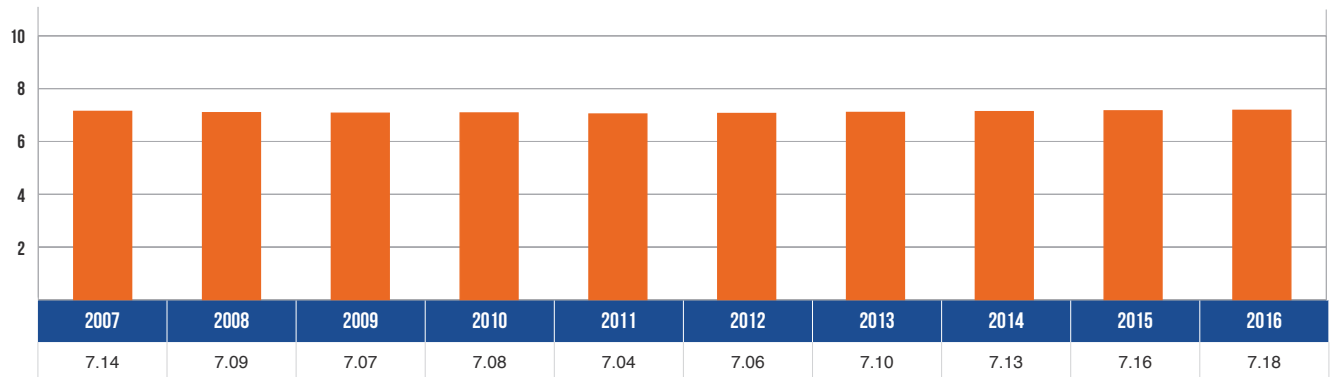
10 YEAR TRENDS-STATEWIDE (CONTINUED)

RESTRAINT USAGE IN CRASHES



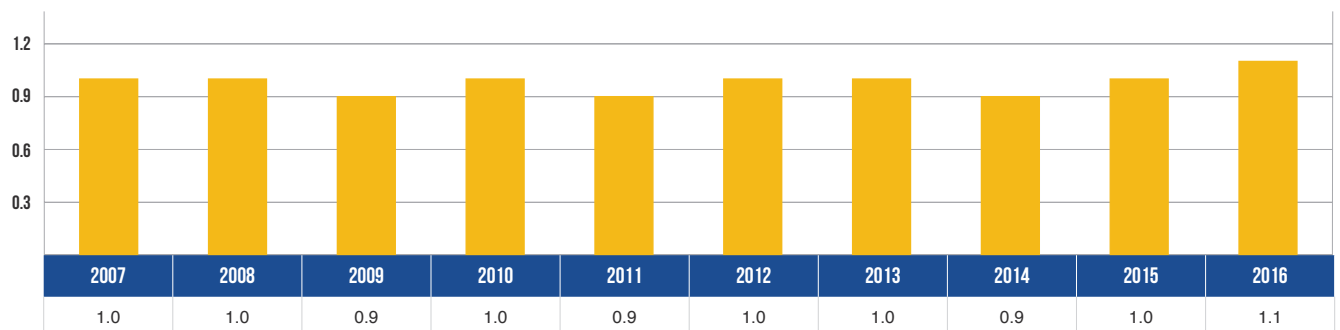
The percentage of motor vehicle occupants using restraints as reported by police in traffic crashes increased 1.9 percent over the last ten years.

DRIVERS IN MICHIGAN



There were 7,176,692 licensed drivers on Michigan roadways in 2016 – an increase of 0.6 percent from 2007.

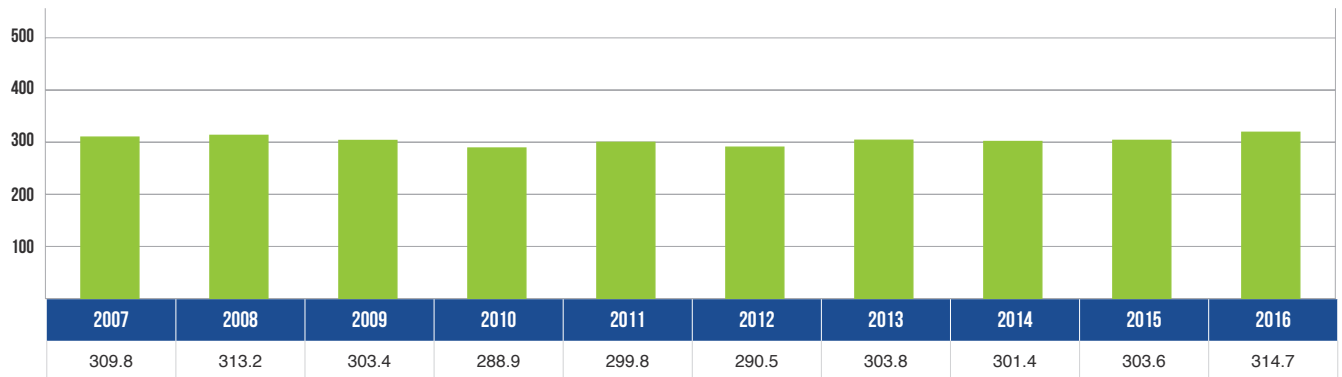
FATALITIES PER 100 MILLION VEHICLE MILES TRAVELED



The death rate of 1.1 fatality per 100 million VMT in 2016 was an increase of 3.6% from the death rate of 1.0 in 2007.

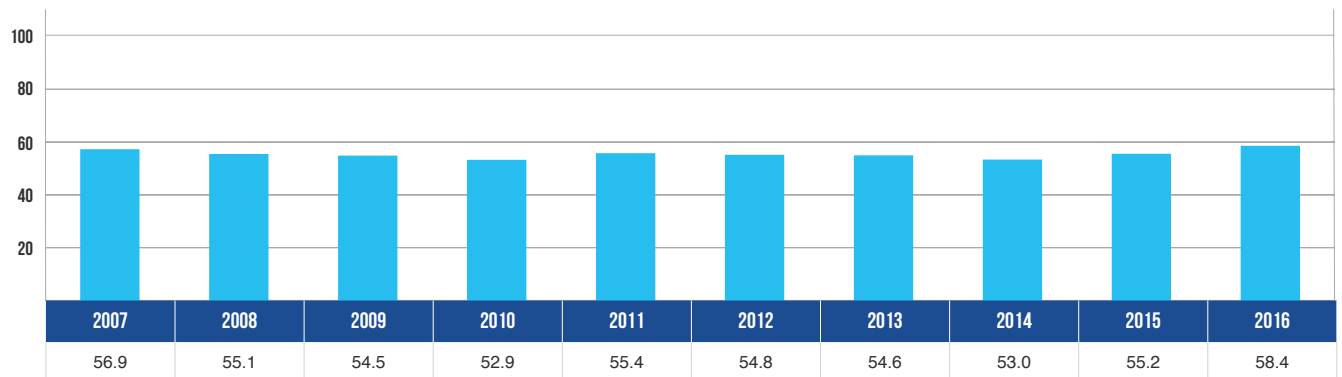
10 YEAR TRENDS-STATEWIDE (CONTINUED)

TOTAL CRASHES PER 100 MILLION VEHICLE MILES TRAVELED



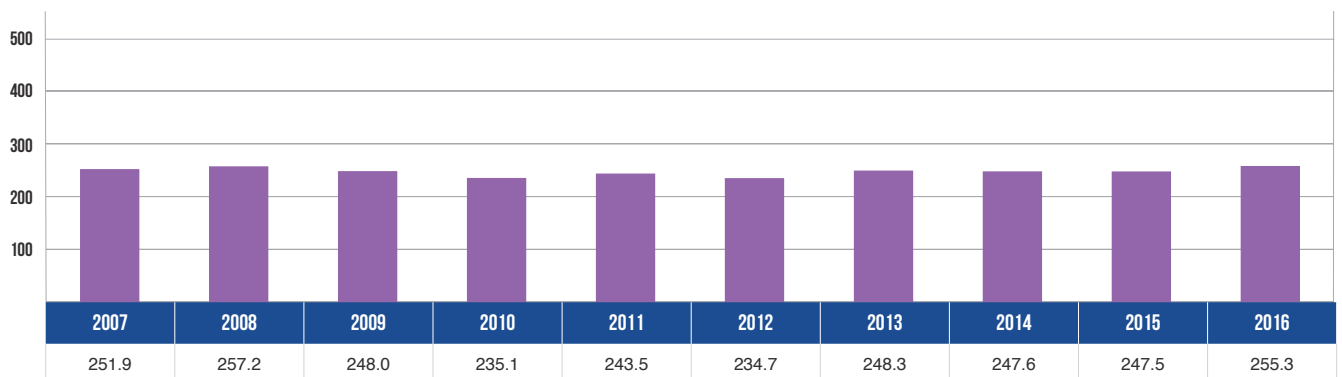
The total crash rate of 314.7 crashes per 100 million VMT in 2016 was a 1.6 percent increase from 2007.

INJURY CRASHES PER 100 MILLION VEHICLE MILES TRAVELED



The injury crash rate of 58.4 crashes per 100 million VMT in 2016 was a 2.7 percent increase from 2007.

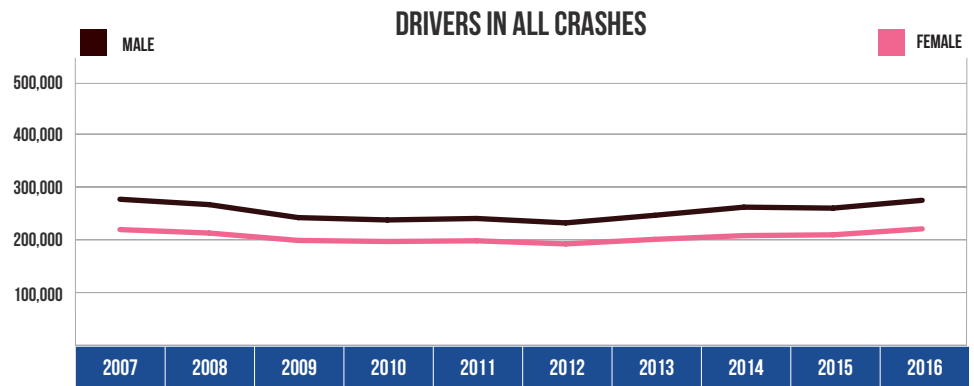
PROPERTY DAMAGE CRASHES PER 100 MILLION VEHICLE MILES TRAVELED



The property damage crash rate of 255.3 crashes per 100 million VMT in 2016 was a 1.3 percent increase from 2007.

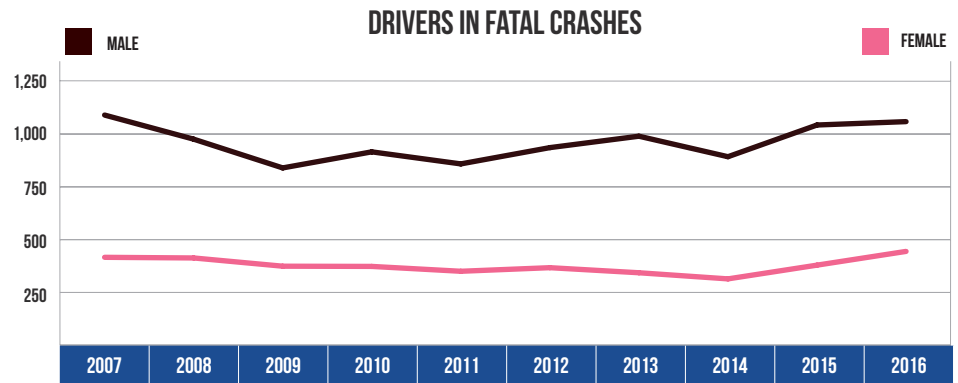
10 YEAR TRENDS-STATEWIDE (CONTINUED)

DRIVERS IN ALL CRASHES		
Year	Male	Female
2007	277,353	219,781
2008	267,186	213,223
2009	242,490	199,166
2010	238,048	197,183
2011	240,850	198,488
2012	232,475	192,605
2013	246,908	201,264
2014	262,359	208,359
2015	260,508	209,843
2016	275,382	221,200



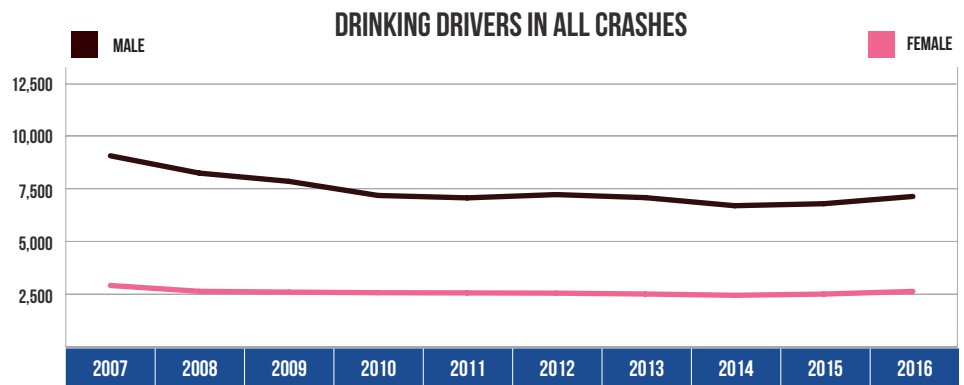
Male drivers accounted for 55.5 percent of all drivers in crashes during 2016, which was down from 55.8 percent in 2007. Female drivers accounted for 44.5 percent of all drivers in crashes during 2016, which was up from 44.2 percent in 2007.

DRIVERS IN FATAL CRASHES		
Year	Male	Female
2007	1,090	417
2008	976	414
2009	840	375
2010	916	374
2011	859	351
2012	936	368
2013	990	344
2014	893	315
2015	1,043	380
2016	1,059	445



Male drivers made up 70.4 percent of all drivers in fatal crashes in 2016, which was down from 72.3 percent in 2007. Female drivers made up 29.6 percent of all drivers in fatal crashes in 2016, which was up from 27.7 percent in 2007.

DRINKING DRIVERS IN ALL CRASHES		
Year	Male	Female
2007	9,095	2,928
2008	8,270	2,650
2009	7,881	2,613
2010	7,209	2,584
2011	7,094	2,574
2012	7,250	2,563
2013	7,105	2,522
2014	6,721	2,461
2015	6,816	2,519
2016	7,014	2,597

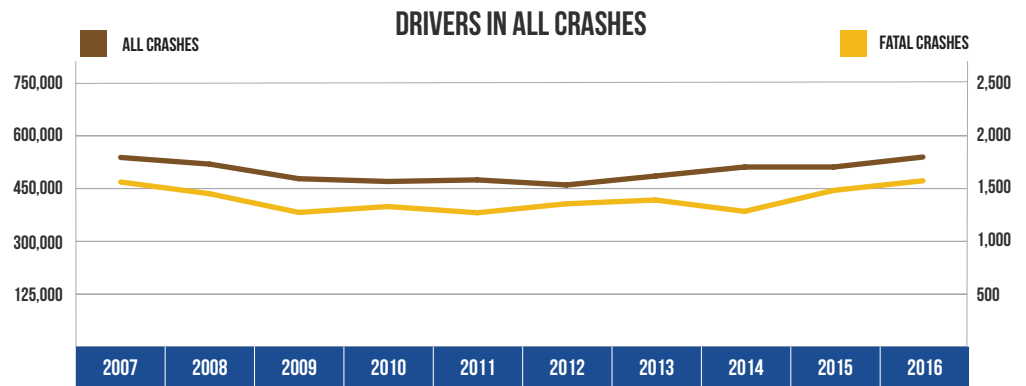


In 2016, males represented 73.0 percent of all drinking drivers, which was down from 75.6 percent in 2007. Females represented 27.0 percent of all drinking drivers in 2016, which was up from 24.4 percent in 2007.

Note: 41,830 drivers in all crashes, 66 drivers in fatal crashes, and 12 drinking drivers were coded as unknown gender in 2016 and are not included in the tables.

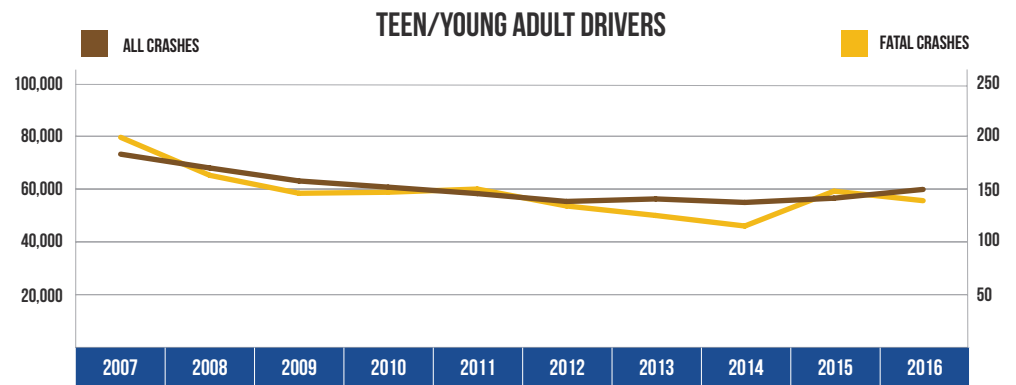
10 YEAR TRENDS-STATEWIDE (CONTINUED)

ALL CRASHES		
Year	All Crashes	Fatal Crashes
2007	537,228	1,558
2008	518,240	1,447
2009	476,801	1,270
2010	468,968	1,326
2011	473,501	1,267
2012	459,030	1,352
2013	484,446	1,388
2014	510,086	1,280
2015	510,074	1,479
2016	538,412	1,570



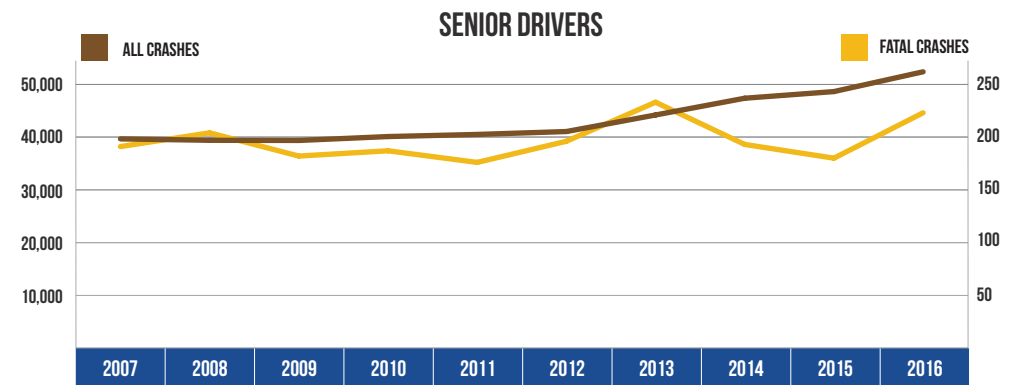
The number of drivers involved in all crashes increased 0.2 percent over the 10-year period. The number of drivers involved in fatal crashes increased 0.8 percent over the 10-year period.

TEEN/YOUNG ADULT DRIVERS (AGE 16-20)		
Year	All Crashes	Fatal Crashes
2007	73,210	199
2008	67,982	163
2009	63,069	146
2010	60,721	147
2011	58,279	150
2012	55,307	134
2013	56,264	125
2014	54,935	115
2015	56,544	148
2016	59,865	139



Teen/young adult drivers (age 16-20) represented 6.6 percent of the licensed drivers in 2016. The number of teen/young adult drivers in all crashes has decreased by 18.2 percent since 2007. Their involvement in fatal crashes has decreased 30.2 percent during the same time period.

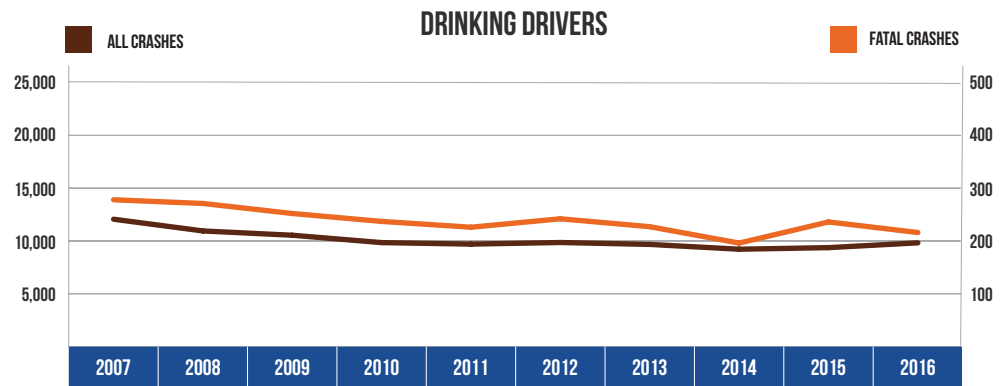
SENIOR DRIVERS (AGE 65 & OVER)		
Year	All Crashes	Fatal Crashes
2007	39,656	191
2008	39,388	204
2009	39,357	182
2010	40,096	187
2011	40,495	176
2012	41,047	196
2013	44,183	233
2014	47,356	193
2015	48,615	180
2016	52,362	223



Senior drivers (age 65 and over) represented 20.0 percent of the licensed drivers in 2016. The number of drivers age 65 and over in all crashes has increased 32.0 percent since 2007. Senior driver involvement in fatal crashes increased 16.8 percent during the same time period.

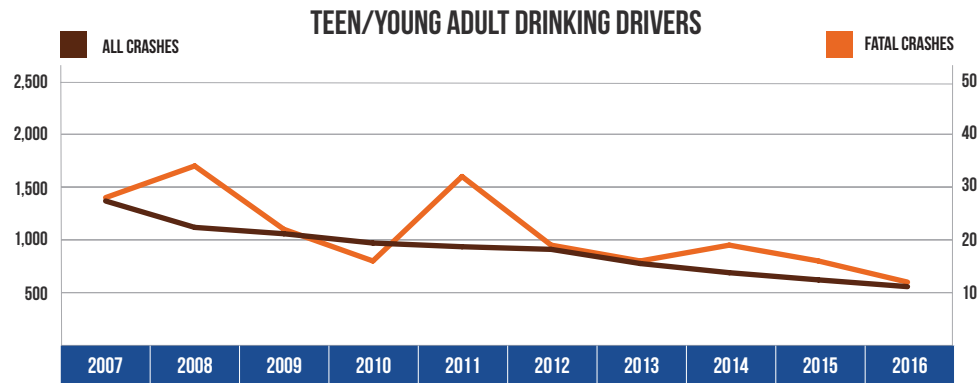
10 YEAR TRENDS-STATEWIDE (CONTINUED)

DRINKING DRIVERS		
Year	All Crashes	Fatal Crashes
2007	12,059	278
2008	10,948	271
2009	10,542	252
2010	9,843	237
2011	9,701	226
2012	9,853	242
2013	9,673	227
2014	9,218	196
2015	9,368	236
2016	9,623	219



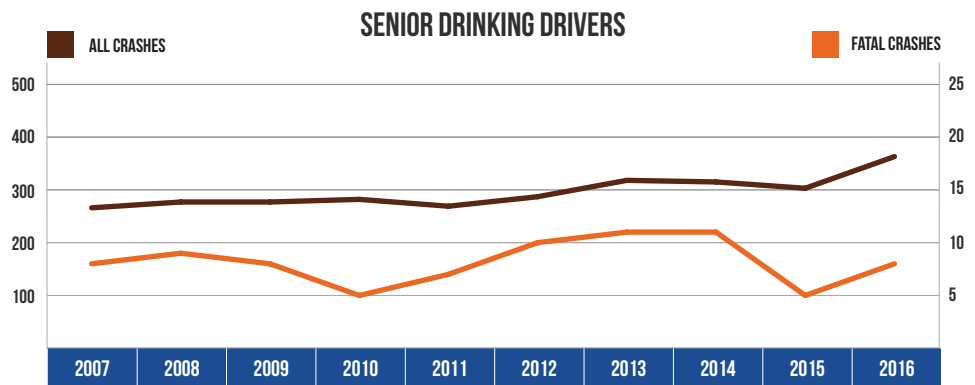
Drinking driver involvement in all crashes decreased by 20.2 percent from 2007. Drinking driver involvement in fatal crashes decreased by 21.2 percent from 2007.

TEEN/YOUNG ADULT DRINKING DRIVERS (AGE 16-20)		
Year	All Crashes	Fatal Crashes
2007	1,368	28
2008	1,118	34
2009	1,058	22
2010	970	16
2011	935	32
2012	910	19
2013	776	16
2014	689	19
2015	621	16
2016	537	12



The number of teen/young adult drinking drivers (age 16-20) in all crashes decreased by 60.7 percent, and their involvement in fatal crashes decreased by 57.1 percent from 2007.

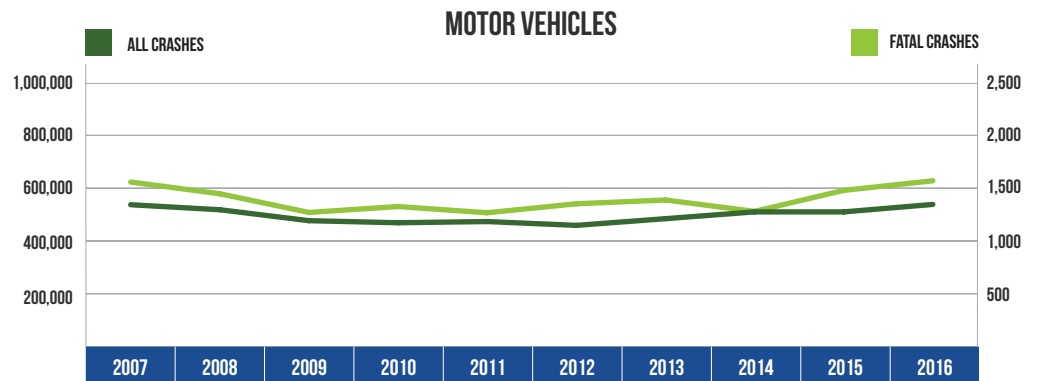
SENIOR DRINKING DRIVERS (AGE 65 & OVER)		
Year	All Crashes	Fatal Crashes
2007	266	8
2008	277	9
2009	277	8
2010	282	5
2011	269	7
2012	287	10
2013	318	11
2014	315	11
2015	303	5
2016	357	8



The number of senior drinking drivers (age 65 and over) in all crashes increased by 34.2 percent from 2007. Their involvement in fatal crashes was stable compared with 2007.

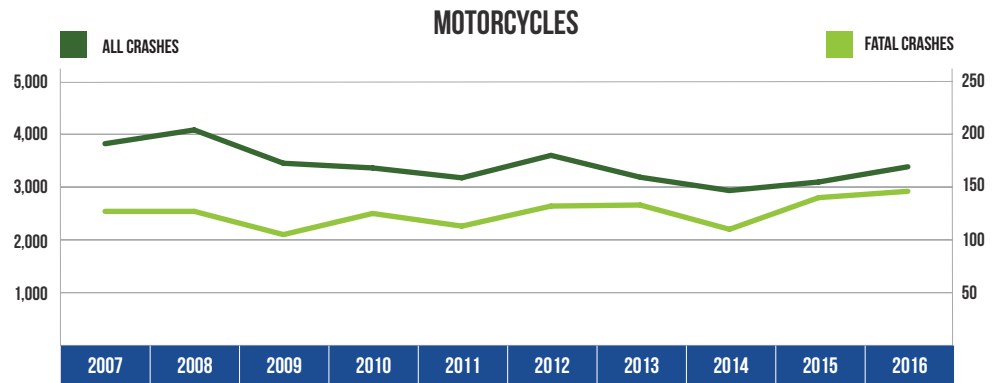
10 YEAR TRENDS-STATEWIDE (CONTINUED)

MOTOR VEHICLES		
Year	All Crashes	Fatal Crashes
2007	537,228	1,558
2008	518,240	1,447
2009	476,801	1,270
2010	468,968	1,326
2011	473,501	1,267
2012	459,030	1,352
2013	484,446	1,388
2014	510,086	1,280
2015	510,074	1,479
2016	538,412	1,570



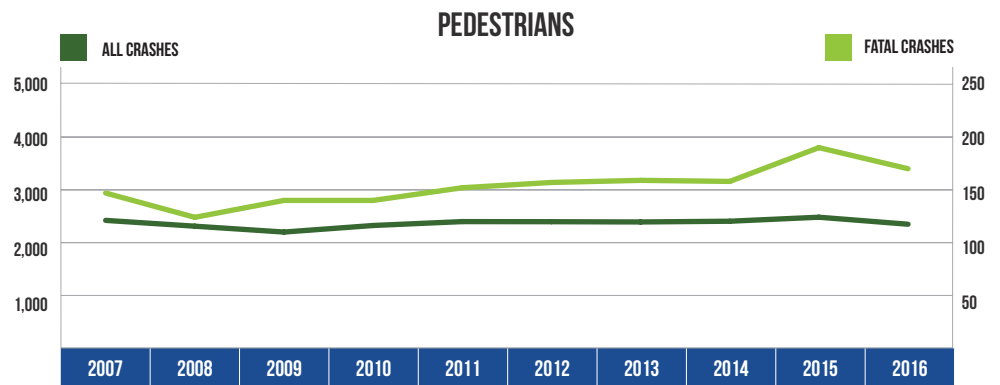
There were 538,412 motor vehicles involved in all crashes in 2016, up 0.2 percent from 2007. There were 1,570 motor vehicles involved in fatal crashes in 2016, up 0.8 percent from 2007.

MOTORCYCLES		
Year	All Crashes	Fatal Crashes
2007	3,821	127
2008	4,082	127
2009	3,451	105
2010	3,362	125
2011	3,175	113
2012	3,600	132
2013	3,186	133
2014	2,934	110
2015	3,096	140
2016	3,384	146



There were 3,384 motorcycles involved in crashes in 2016, an 11.4 percent decrease from 2007. There were 146 motorcycles involved in fatal crashes in 2016, up 15.0 percent from 2007.

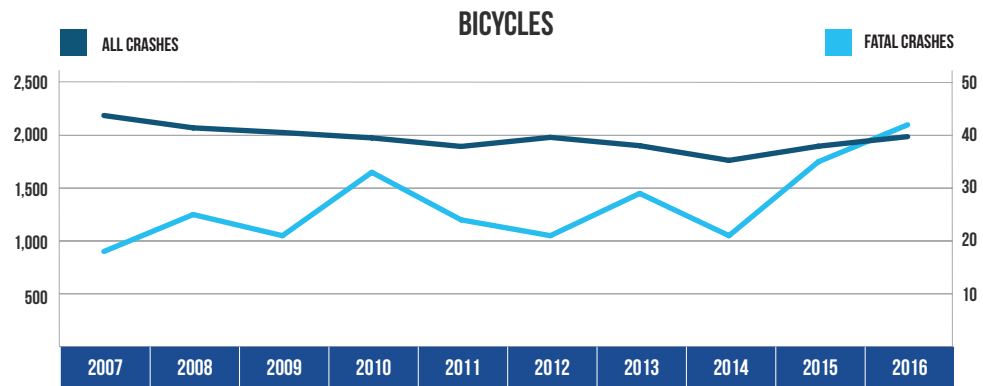
PEDESTRIANS		
Year	All Crashes	Fatal Crashes
2007	2,422	147
2008	2,312	124
2009	2,201	140
2010	2,325	140
2011	2,399	152
2012	2,397	157
2013	2,392	159
2014	2,406	158
2015	2,482	190
2016	2,349	170



There were 2,349 pedestrians involved in crashes in 2016, down 3.0 percent from 2007. There were 170 pedestrians involved in fatal crashes in 2016, up 15.6 percent from 2007.

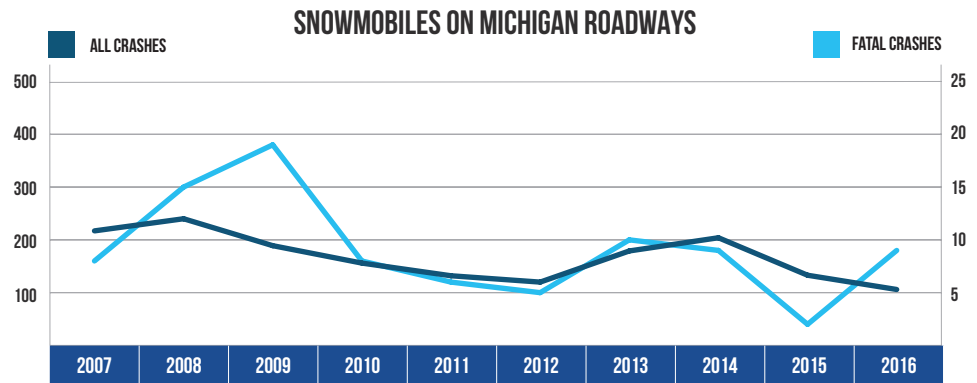
10 YEAR TRENDS-STATEWIDE (CONTINUED)

BICYCLES		
Year	All Crashes	Fatal Crashes
2007	2,188	18
2008	2,071	25
2009	2,027	21
2010	1,976	33
2011	1,895	24
2012	1,981	21
2013	1,902	29
2014	1,763	21
2015	1,897	35
2016	1,988	42



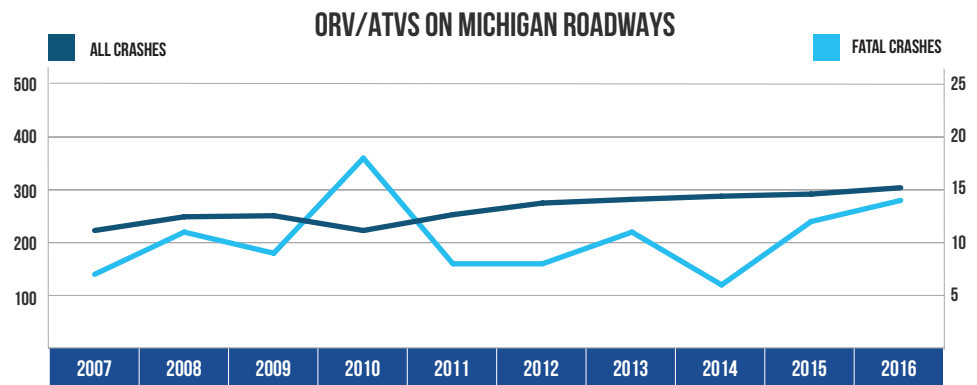
There were 1,988 bicycles involved in crashes in 2016, down 9.1 percent from 2007. There were 42 bicycles involved in fatal crashes in 2016, up 133.3 percent from 2007.

SNOWMOBILES ON MICHIGAN ROADWAYS		
Year	All Crashes	Fatal Crashes
2007	217	8
2008	240	15
2009	189	19
2010	156	8
2011	132	6
2012	120	5
2013	179	10
2014	204	9
2015	133	2
2016	106	9



There were 106 snowmobiles in crashes on roadways in 2016, down 51.2 percent from 2007. There were nine snowmobiles in fatal crashes, up 12.5 percent from 2007.

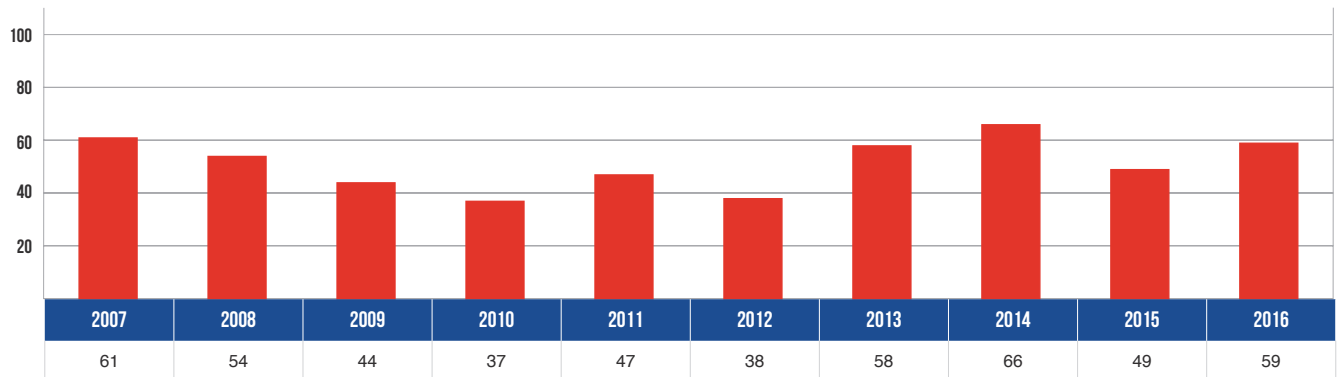
ORV/ATVS ON MICHIGAN ROADWAYS		
Year	All Crashes	Fatal Crashes
2007	223	7
2008	249	11
2009	251	9
2010	223	18
2011	253	8
2012	275	8
2013	282	11
2014	288	6
2015	292	12
2016	304	14



There were 304 ORV/ATVs in crashes on roadways in 2016, up 36.3 percent from 2007. There were 14 ORV/ATVs in fatal crashes, up 100.0 percent from 2007.

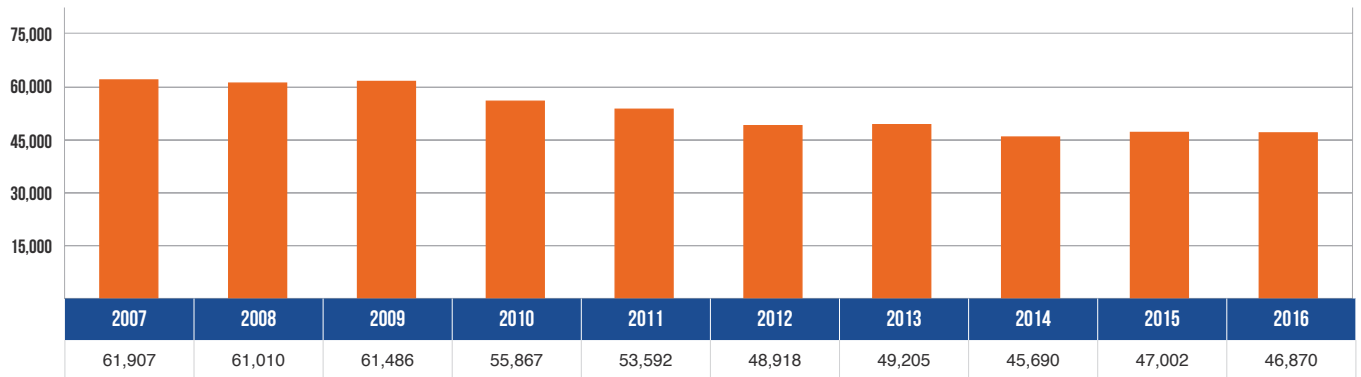
10 YEAR TRENDS-STATEWIDE (CONTINUED)

VEHICLE-TRAIN CRASHES



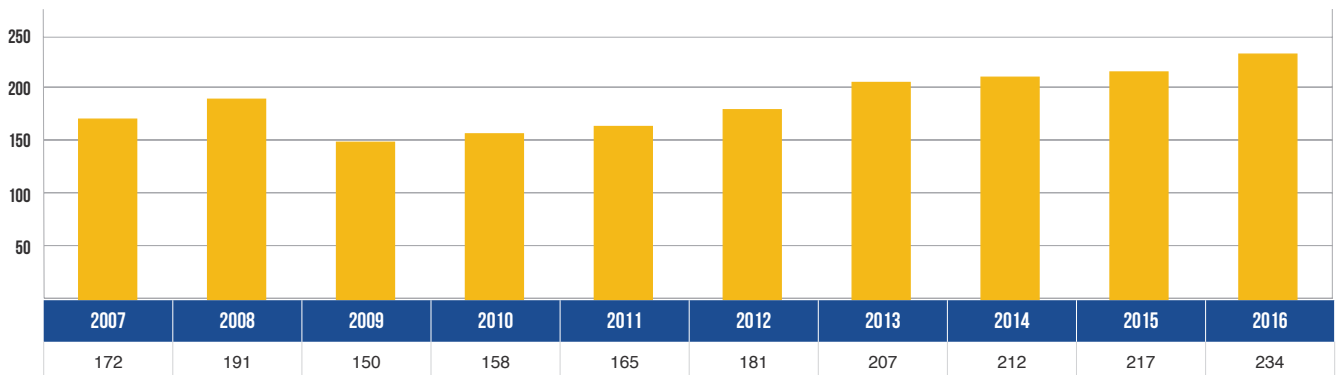
There were 59 vehicle-train crashes in 2016 – a decrease of 3.3 percent in the 10-year period.

VEHICLE-DEER CRASHES



There were 46,870 vehicle-deer crashes in 2016 – a decrease of 24.3 percent in the 10-year period.

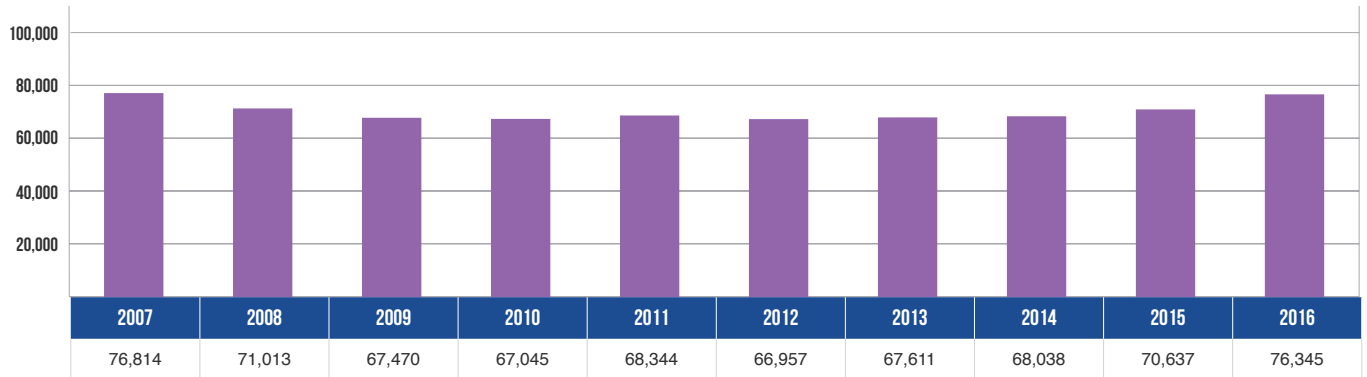
FARM EQUIPMENT CRASHES



There were 234 farm equipment crashes in 2016 – an increase of 36.0 percent from 2007.

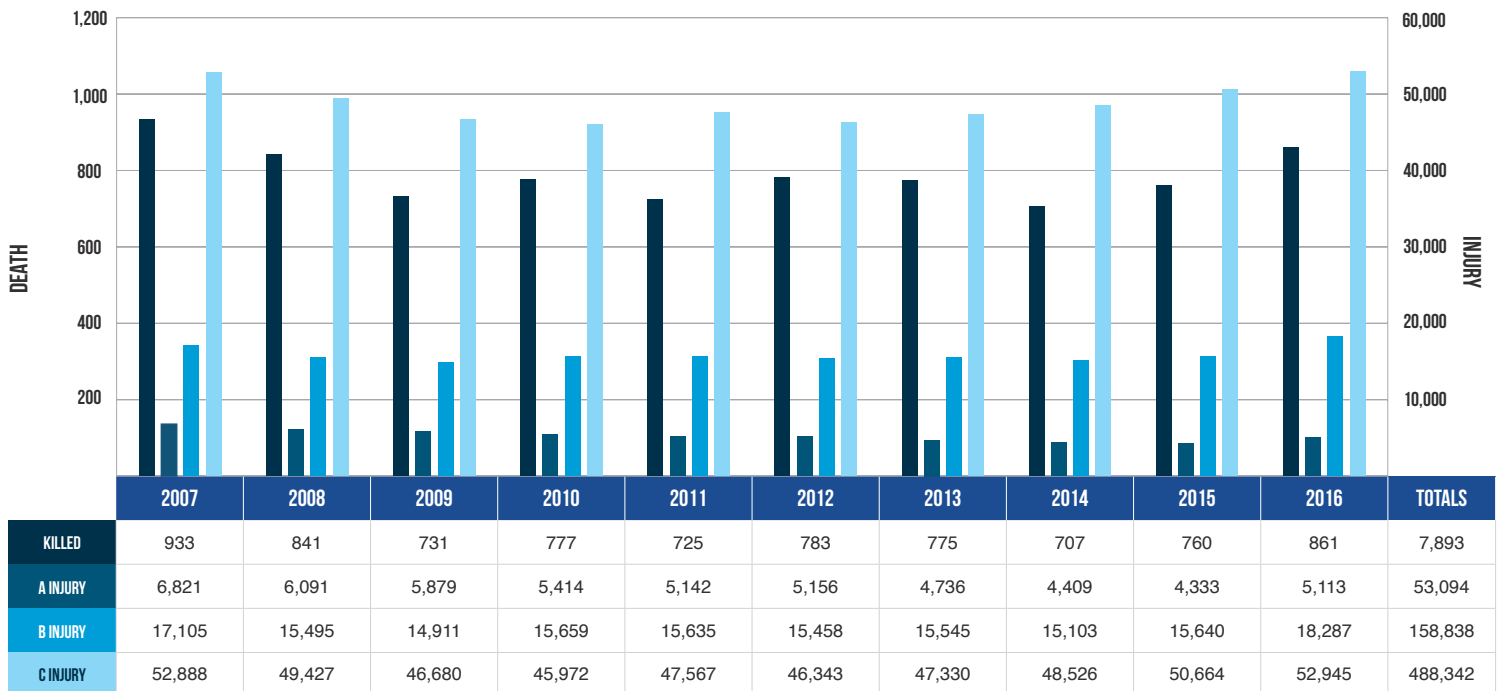
10 YEAR TRENDS-STATEWIDE (CONTINUED)

INJURED OCCUPANTS IN CRASHES



There were 76,345 occupants injured in crashes in 2016 – a decrease of 0.6 percent from 2007.

DEATH AND INJURY FOR CRASH-INVOLVED OCCUPANTS



Over the period from 2007 to 2016, occupant deaths decreased 7.7 percent, A injuries decreased 25.0 percent, B injuries increased 6.9 percent, and C injuries increased 0.1 percent.

Note: These figures contain the number of occupants recorded as injured by the police officer on the UD-10.

10 YEAR TRENDS-STATEWIDE (CONTINUED)

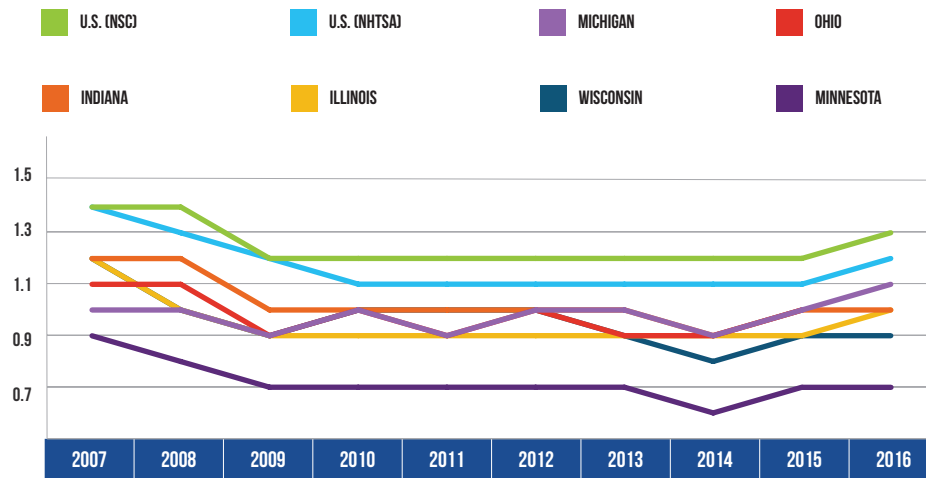
AVERAGE AGE OF DRIVERS IN CRASHES 2007 - 2016



Over the 10-year period, reflecting the demographic trend of increasing age in the general population, the average age of drivers involved in all crashes has increased nearly 4% and in fatal crashes nearly 27%. The average age of drinking drivers in crashes has decreased 12%. The average age of drinking drivers in fatal crashes has increased 4%.

10 YEAR TRENDS-STATEWIDE (CONTINUED)

FATALITIES PER 100 MILLION VMT 2007 - 2016



YEAR	U.S. (NSC*)	U.S. (NHTSA**)	MICHIGAN	OHIO	INDIANA	ILLINOIS	WISCONSIN	MINNESOTA
2007	1.4	1.4	1.0	1.1	1.2	1.2	1.2	0.9
2008	1.4	1.3	1.0	1.1	1.2	1.0	1.0	0.8
2009	1.2	1.2	0.9	0.9	1.0	0.9	0.9	0.7
2010	1.2	1.1	1.0	1.0	1.0	0.9	1.0	0.7
2011	1.2	1.1	0.9	0.9	1.0	0.9	1.0	0.7
2012	1.2	1.1	1.0	1.0	1.0	0.9	1.0	0.7
2013	1.2	1.1	1.0	0.9	1.0	0.9	0.9	0.7
2014	1.2	1.1	0.9	0.9	0.9	0.9	0.8	0.6
2015	1.2	1.1	1.0	1.0	1.0	0.9	0.9	0.7
2016	1.3	1.2	1.1	1.0	1.0	1.0	0.9	0.7

* National Safety Council (NSC) reports traffic and nontraffic deaths within a year of the crash.

**National Highway Traffic Safety Administration (NHTSA) reports only traffic deaths that occur within 30 days of the accident.

U.S. data for this table and tables on the following page were provided by the National Safety Council [3], the National Highway Traffic Safety Administration [4], and the Federal Highway Administration [5]. State data for this table and tables on the following page were provided by Ohio [6], Indiana [7], Illinois [8], Wisconsin [9], and Minnesota [10].

10 YEAR TRENDS-STATEWIDE (CONTINUED)

YEAR	U.S. (NSC) FATALITIES	U.S. (NHTSA) FATALITIES	MICHIGAN FATALITIES	OHIO FATALITIES	INDIANA FATALITIES	ILLINOIS FATALITIES	WISCONSIN FATALITIES	MINNESOTA FATALITIES
2007	43,100	41,059	1,084	1,257	899	1,248	737	510
2008	39,800	37,261	980	1,191	815	1,043	587	455
2009	35,900	33,963	871	1,028	692	911	542	421
2010	34,700	32,885	937	1,081	754	927	562	411
2011	34,600	32,367	889	1,015	749	918	565	368
2012	36,200	33,561	936	1,122	779	956	601	395
2013	35,369	32,850	951	990	777	991	527	387
2014	35,400	32,675	876	1,008	743	924	498	361
2015	38,300	35,092	963	1,110	829	998	555	411
2016	40,200	37,461	1,064	1,133	821	1,078	588	392

YEAR	U.S. (FHWA) VMT	MICHIGAN VMT	OHIO VMT	INDIANA VMT	ILLINOIS VMT	WISCONSIN VMT	MINNESOTA VMT
2007	2,996	104.6	111.1	74.1	107.4	59.5	57.4
2008	2,929	100.9	108.3	68.0	105.6	57.5	57.3
2009	2,935	95.9	110.8	68.8	105.7	58.2	56.9
2010	3,000	97.6	113.5	72.9	105.7	59.4	56.8
2011	2,946	94.8	111.7	77.5	103.4	58.6	56.7
2012	2,954	94.3	111.5	76.0	104.5	59.1	57.0
2013	2,972	95.1	112.7	79.4	105.5	59.5	57.0
2014	3,016	99.1	112.8	81.4	105.0	60.0	57.4
2015	3,148	97.8	117.8	82.1	105.4	62.1	59.1
2016	3,218	99.2	118.5	82.6	107.2	63.9	58.9

VMT described in billions of miles