


2016

Michigan Traffic Crash Facts

Reporting Criteria

Please pay particular attention to the wording when interpreting the three levels of data gathered for this report.

Crash

The Crash Level analyzes data related to crash events and returns one result per crash.

Examples: Time, weather, and location.

Units

The Units Level analyzes the experience of the units in the crash and returns one result per vehicle, driver, pedestrian, bicyclist, or train.

Examples: Vehicle type, driver condition, and unit events.

People

The People Level analyzes the experience of the people involved in the crash and returns one result per occupant/person/party.

Examples: Age, injury severity, and seat belt or helmet use.

KABCO Injury Indicator:

K = Killed

A = Suspected Serious Injury

B = Suspected Minor Injury

C = Possible Injury

O = No Injury

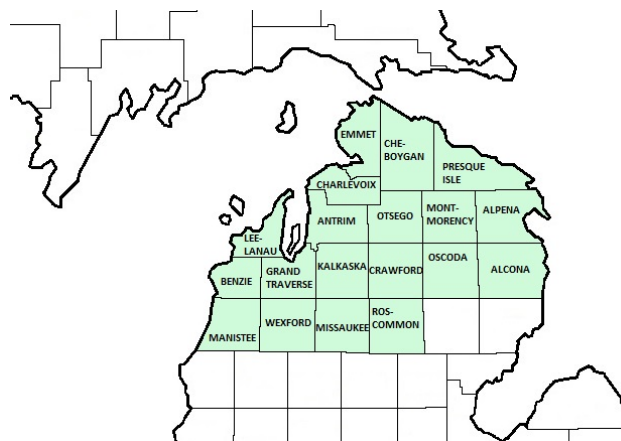
Property Damage Only (PDO)



Michigan State Police (MSP) District 7 - Northern Lower Peninsula

2016 Traffic Crash Data & 2012-2016 5-Year Trends

Beginning in 2011, District 7 is comprised of Alcona, Alpena, Antrim, Benzie, Charlevoix, Cheboygan, Crawford, Emmet, Grand Traverse, Kalkaska, Leelanau, Manistee, Missaukee, Montmorency, Oscoda, Otsego, Presque Isle, Roscommon, and Wexford counties. Trend tables for this report are based on those counties.



Sources:

The crashes in this report occurred on public roadways in Michigan and resulted in injuries, fatalities, or property damage (with \$1,000 as a reporting threshold). The information was gathered from Michigan Traffic Crash Report Forms (UD-10) submitted by local police departments, sheriff's offices, and the Michigan State Police. Other related information was obtained from the departments of Transportation, State, and Community Health.

This page left intentionally blank

MSP District 7 - Northern Lower Peninsula

- There were 16,912 crashes in District 7 during 2016. [Page 1]
- There were 82 fatalities in 74 fatal crashes in 2016 in District 7. [Page 1]
- A total of 3,235 injuries resulted from 2,385 injury crashes. [Page 1]
- There were 14,453 property damage only crashes (no fatalities or injuries). [Page 1]
- December had the highest number of crashes (2,010). [Pages 1-2]
- August had the highest number of fatal crashes (11) and fatalities (15). [Pages 1-2]
- July had the highest number of injury crashes (294) and injuries (395). [Page 1]
- December had the highest number of property damage only crashes (1,777). [Page 1]
- Of all vehicles involved in fatal crashes, 9 (7.8%) were motorcycles. [Page 1]
- Friday was the day of the week with the highest number of crashes (2,835) and Tuesday, Thursday, and Saturday all had the highest number of fatal crashes (12 each). [Pages 2-3]
- The 3:00 PM – 5:59 PM time period had the highest number of crashes (3,165). The 6:00 PM – 8:59 PM time period had the highest number of fatal crashes (15). [Pages 5-6]
- During the period from 2012 to 2016, the highest number of deer crashes occurred in 2013 (7,077). There were three fatal crashes involving deer in 2016. [Pages 7-8]
- Grand Traverse County (20.8%) had the highest number of crashes in District 7 in 2016, followed by Emmet County (8.7%), and Wexford County (6.8%). [Page 8]
- Grand Traverse County (18.3%) had the highest number of fatalities in District 7 in 2016, followed by Wexford County (12.2%), and Leelanau County (8.5%). [Page 8]
- The highest number of drivers in crashes (24,252) occurred during 2014 and the highest number of drivers coded drinking in crashes (597) occurred during 2016 within the five-year period. [Page 9]
- A total of 608 crashes involved alcohol in 2016, which was the highest number of alcohol-involved crashes during the five-year period. [Page 10]
- Alcohol-involved fatal crashes were the highest in 2016 during the five-year period from 2012 to 2016 at 74. [Page 10]
- A total of 135 crashes involved drugs in 2016, the highest during the five-year period. The highest number of fatal crashes involving drugs (17) and serious injury crashes involving drugs (16) occurred in 2013. [Page 11]
- There were 21,742 drivers wearing seatbelts and 265 drivers not wearing seatbelts in crashes in 2016. Of the 265 drivers not wearing seat belts, 12 (4.5%) were killed and 98 (37.0%) were injured. [Pages 14-16]
- The most common hazardous action coded for drivers in 2016 in all crashes (2,693) and fatal crashes (23) was speed too fast. [Page 17]

District 7 Experience

In 2016:

There were 23,591 drivers involved in 16,912 motor vehicle crashes in MSP District 7. Of those crashes, 74 were classified as fatal, resulting in 82 fatalities. An additional 3,235 persons were injured.

District 7 experienced the highest number of motor vehicle crashes (2,010) in December, the highest number of fatal crashes (11) and the highest number of persons killed (15) in August.

Michigan driver statistics indicate 5.6 percent of licensed drivers in District 7 were age 16-20, and 11.2 percent of drivers in crashes were also in that age group.

2016 - Crashes and Injuries by Month

Month	Crashes				Persons	
	Total	Fatal	Injury	Property Damage Only (PDO)	Fatalities	Injuries
January	1,525	5	167	1,353	5	231
February	1,363	2	173	1,188	2	222
March	1,048	2	125	921	2	181
April	1,076	4	154	918	4	205
May	1,148	6	191	951	6	262
June	1,379	6	204	1,169	6	281
July	1,455	9	294	1,152	10	395
August	1,272	11	251	1,010	15	360
September	1,260	10	210	1,040	10	284
October	1,434	8	200	1,226	10	266
November	1,942	5	189	1,748	6	244
December	2,010	6	227	1,777	6	304
Total	16,912	74	2,385	14,453	82	3,235

2016 - Driver Statistics

Age Group	Statewide			Driver Rates	
	2016 Population	Licensed Drivers	Drivers in Crashes	Per 10k Population	Per 10k Licensed
0 - 15	77,239	2,372	53	6.9	223.4
16 - 20	24,282	20,477	2,649	1,090.9	1,293.6
21 - 24	19,288	18,663	1,875	972.1	1,004.7
25 - 64	233,097	225,223	14,719	631.5	653.5
65 +	106,486	102,089	3,359	315.4	329.0
Unknown	0	0	936	--	--
Total	460,392	368,824	23,591	512.4	639.6

2016 - Vehicles in Crashes

Vehicle Type	Motor Vehicles		Fatal Crashes		Injury Crashes	PDO Crashes
	Number of Vehicles	% of Total	Number	% of Total	Number	Number
Passenger car, SUV, van	17,074	72.4	61	53.0	2,634	14,379
Motor home	360	1.5	0	0.0	37	323
Pickup truck	4,633	19.6	20	17.4	644	3,969
Small truck under 10,000 lbs. GVWR	373	1.6	2	1.7	51	320
Motorcycle	202	0.9	9	7.8	146	47
Moped / goped	26	0.1	1	0.9	23	2
Go-cart / golf cart	3	0.0	0	0.0	2	1
Snowmobile	47	0.2	3	2.6	30	14
Off-Road Vehicle - ORV / All-Terrain Vehicle - ATV	59	0.3	3	2.6	53	3
Other	104	0.4	1	0.9	16	87
Truck/bus over 10,000 lbs.	463	2.0	15	13.0	71	377
Unknown	247	1.0	0	0.0	15	232
Total	23,591	100.0	115	100.0	3,722	19,754

MSP District 7 - Northern Lower Peninsula (continued)

5-Year Trend - Crashes by Month

Month	2012		2013		2014		2015		2016	
	Total Crashes	Fatal Crashes	Total Crashes	Fatal Crashes	Total Crashes	Fatal Crashes	Total Crashes	Fatal Crashes	Total Crashes	Fatal Crashes
January	1,726	4	1,718	5	2,027	3	1,712	5	1,525	5
February	1,368	4	1,365	8	1,481	3	1,440	4	1,363	2
March	945	2	1,162	2	1,488	1	1,050	2	1,048	2
April	799	2	1,147	3	1,089	4	989	2	1,076	4
May	1,008	5	1,049	3	1,073	4	1,081	5	1,148	6
June	1,304	5	1,349	6	1,310	4	1,477	3	1,379	6
July	1,260	7	1,290	7	1,267	5	1,389	8	1,455	9
August	1,158	5	1,226	9	1,178	5	1,274	8	1,272	11
September	1,252	2	1,248	12	1,098	9	1,163	7	1,260	10
October	1,650	2	1,553	3	1,520	3	1,533	1	1,434	8
November	2,032	6	2,303	8	2,387	4	1,992	7	1,942	5
December	1,622	5	2,145	4	1,667	4	1,335	4	2,010	6
Total	16,124	49	17,555	70	17,585	49	16,435	56	16,912	74

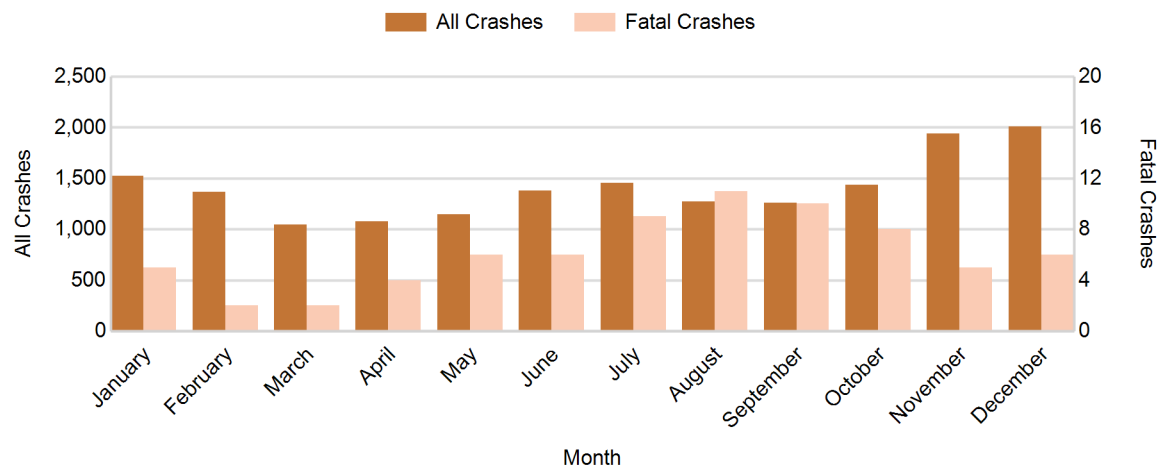
Note: † Indicates that the highest number of total crashes reported in the 5-year period occurred in the same month

5-Year Trend - Crashes by Day of Week

Day	2012		2013		2014		2015		2016	
	Total Crashes	Fatal Crashes	Total Crashes	Fatal Crashes	Total Crashes	Fatal Crashes	Total Crashes	Fatal Crashes	Total Crashes	Fatal Crashes
Monday	2,281	5	2,518	12	2,439	8	2,277	6	2,380	9
Tuesday	2,171	5	2,629	7	2,607	5	2,272	8	2,366	12
Wednesday	2,196	7	2,604	7	2,648	6	2,498	15	2,602	7
Thursday	2,407	4	2,760	6	2,590	5	2,531	8	2,550	12
Friday	2,924 †	10	2,814 †	14	3,049 †	5	2,678 †	9	2,835 †	11
Saturday	2,216	9	2,336	14	2,232	12	2,245	6	2,210	12
Sunday	1,929	9	1,894	10	2,020	8	1,934	4	1,969	11
Total	16,124	49	17,555	70	17,585	49	16,435	56	16,912	74

Note: † Indicates that the highest number of total crashes reported in the 5-year period occurred on the same day of the week

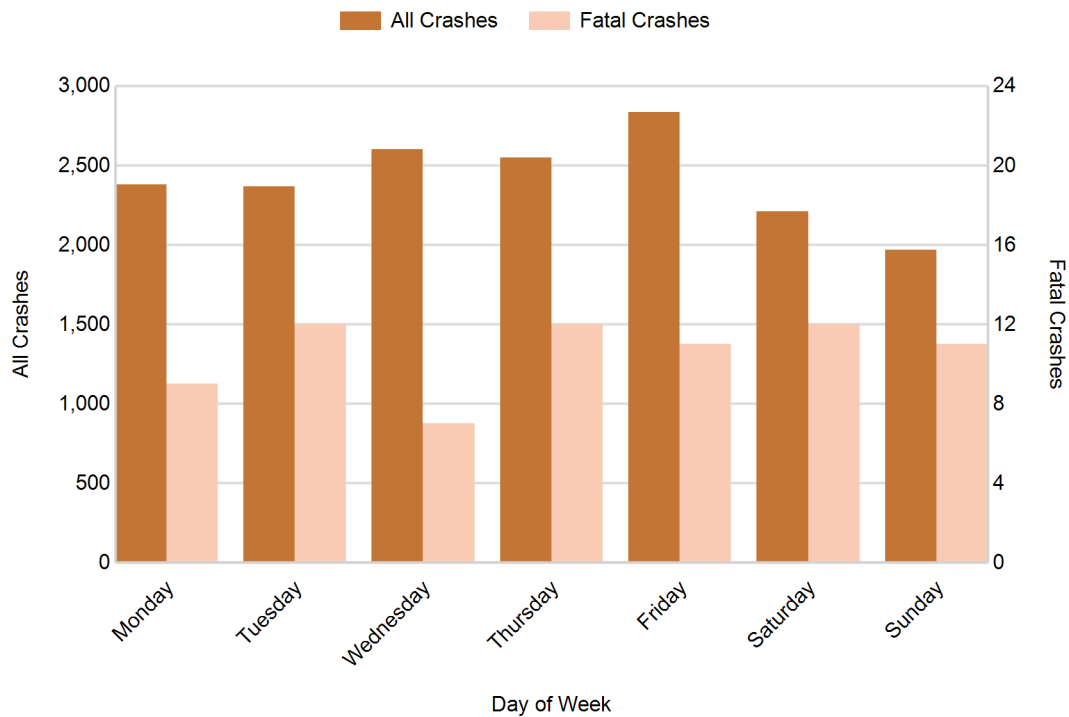
2016 Crashes by Month



2016 - Crashes by Day of Week

Day	All Crashes		Fatal Crashes		Injury Crashes			PDO Crashes
	Number	% of Total	Number	% of Fatal	A	B	C	Number
Monday	2,380	14.1	9	12.2	37	95	194	2,045
Tuesday	2,366	14.0	12	16.2	34	78	182	2,060
Wednesday	2,602	15.4	7	9.5	35	100	216	2,244
Thursday	2,550	15.1	12	16.2	40	94	201	2,203
Friday	2,835	16.8	11	14.9	46	134	211	2,433
Saturday	2,210	13.1	12	16.2	62	131	168	1,837
Sunday	1,969	11.6	11	14.9	42	116	169	1,631
Total	16,912	100.0	74	100.0	296	748	1,341	14,453

2016 Day of Week and Severity

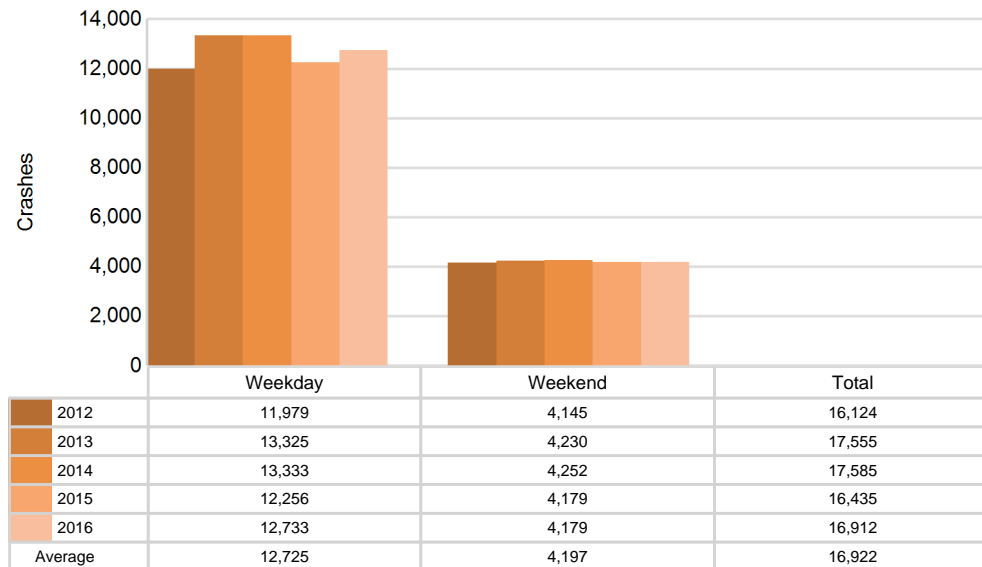


MSP District 7 - Northern Lower Peninsula (continued)

5-Year Trend - Crashes by Weekday and Weekend

Portion of Week	2012		2013		2014		2015		2016	
	Total Crashes	Fatal Crashes	Total Crashes	Fatal Crashes	Total Crashes	Fatal Crashes	Total Crashes	Fatal Crashes	Total Crashes	Fatal Crashes
Weekday	11,979	31	13,325	46	13,333	29	12,256	46	12,733	51
Weekend	4,145	18	4,230	24	4,252	20	4,179	10	4,179	23
Total	16,124	49	17,555	70	17,585	49	16,435	56	16,912	74

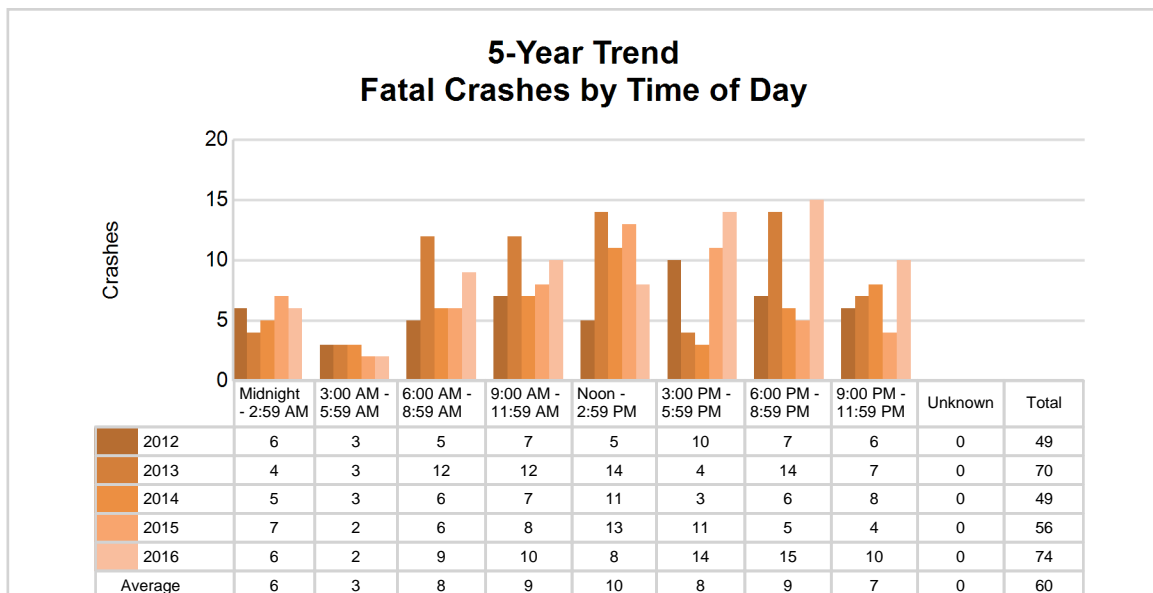
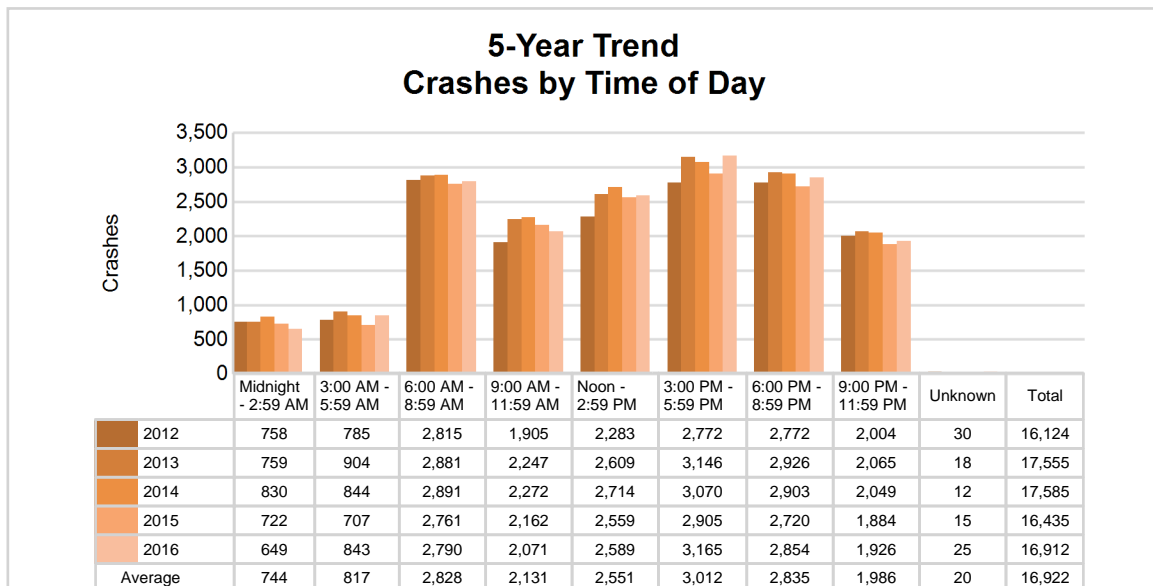
5-Year Crash Trends by Weekday (Monday - Friday) and Weekend (Saturday & Sunday)



5-Year Trend - Crashes by Time of Day

Time of Day	2012		2013		2014		2015		2016	
	Total Crashes	Fatal Crashes	Total Crashes	Fatal Crashes	Total Crashes	Fatal Crashes	Total Crashes	Fatal Crashes	Total Crashes	Fatal Crashes
Midnight - 2:59 AM	758	6	759	4	830	5	722	7	649	6
3:00 AM - 5:59 AM	785	3	904	3	844	3	707	2	843	2
6:00 AM - 8:59 AM	2,815	5	2,881	12	2,891	6	2,761	6	2,790	9
9:00 AM - 11:59 AM	1,905	7	2,247	12	2,272	7	2,162	8	2,071	10
Noon - 2:59 PM	2,283	5	2,609	14	2,714	11	2,559	13	2,589	8
3:00 PM - 5:59 PM	2,772	10	3,146	4	3,070	3	2,905	11	3,165	14
6:00 PM - 8:59 PM	2,772	7	2,926	14	2,903	6	2,720	5	2,854	15
9:00 PM - 11:59 PM	2,004	6	2,065	7	2,049	8	1,884	4	1,926	10
Unknown	30	0	18	0	12	0	15	0	25	0
Total	16,124	49	17,555	70	17,585	49	16,435	56	16,912	74

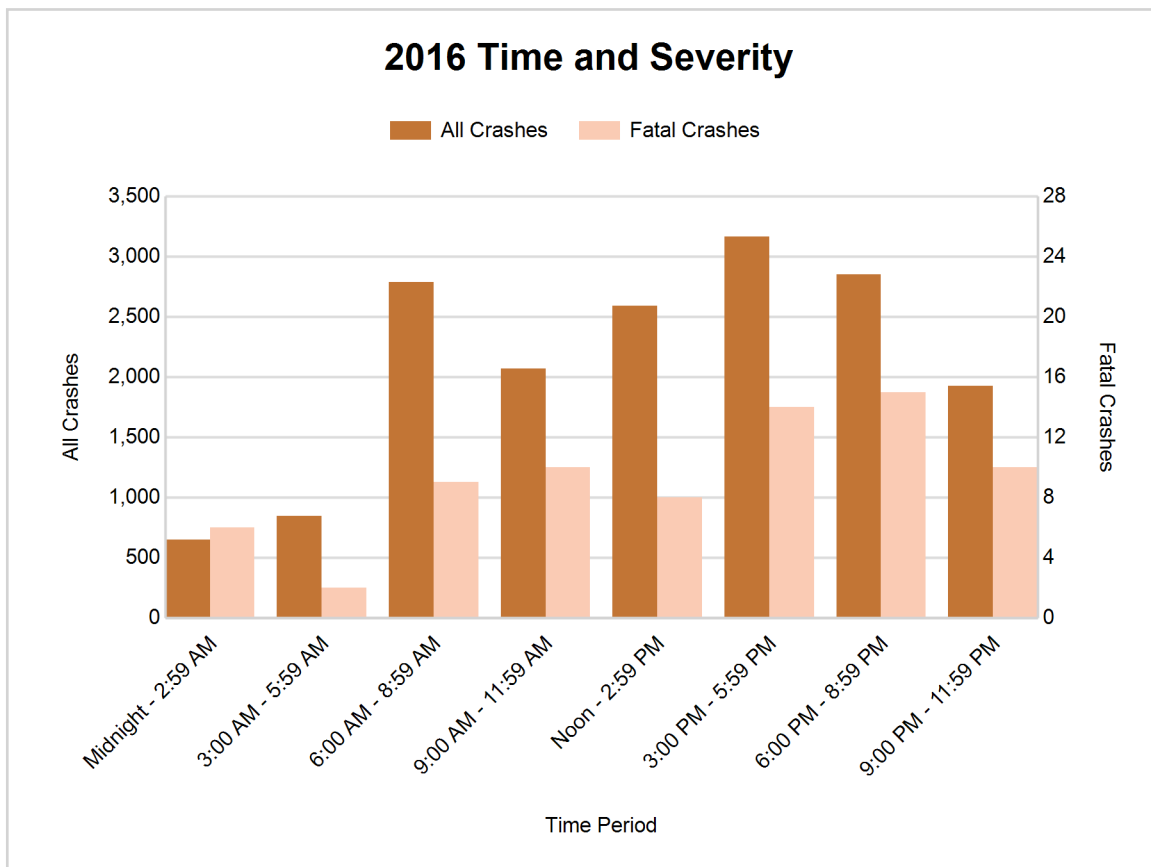
Note: † Indicates that the highest number of total crashes reported in the 5-year period occurred in the same time period



MSP District 7 - Northern Lower Peninsula (continued)

2016 - Time and Severity

Time of Day	All Crashes		Fatal Crashes		Injury Crashes			PDO Crashes
	Number	% of Total	Number	% of Fatal	A	B	C	Number
Midnight - 2:59 AM	649	3.8	6	8.1	13	31	37	562
3:00 AM - 5:59 AM	843	5.0	2	2.7	10	27	46	758
6:00 AM - 8:59 AM	2,790	16.5	9	12.2	31	77	149	2,524
9:00 AM - 11:59 AM	2,071	12.2	10	13.5	46	105	182	1,728
Noon - 2:59 PM	2,589	15.3	8	10.8	60	140	303	2,078
3:00 PM - 5:59 PM	3,165	18.7	14	18.9	58	167	323	2,603
6:00 PM - 8:59 PM	2,854	16.9	15	20.3	54	126	187	2,472
9:00 PM - 11:59 PM	1,926	11.4	10	13.5	24	74	112	1,706
Unknown	25	0.1	0	0.0	0	1	2	22
Total	16,912	100.0	74	100.0	296	748	1,341	14,453



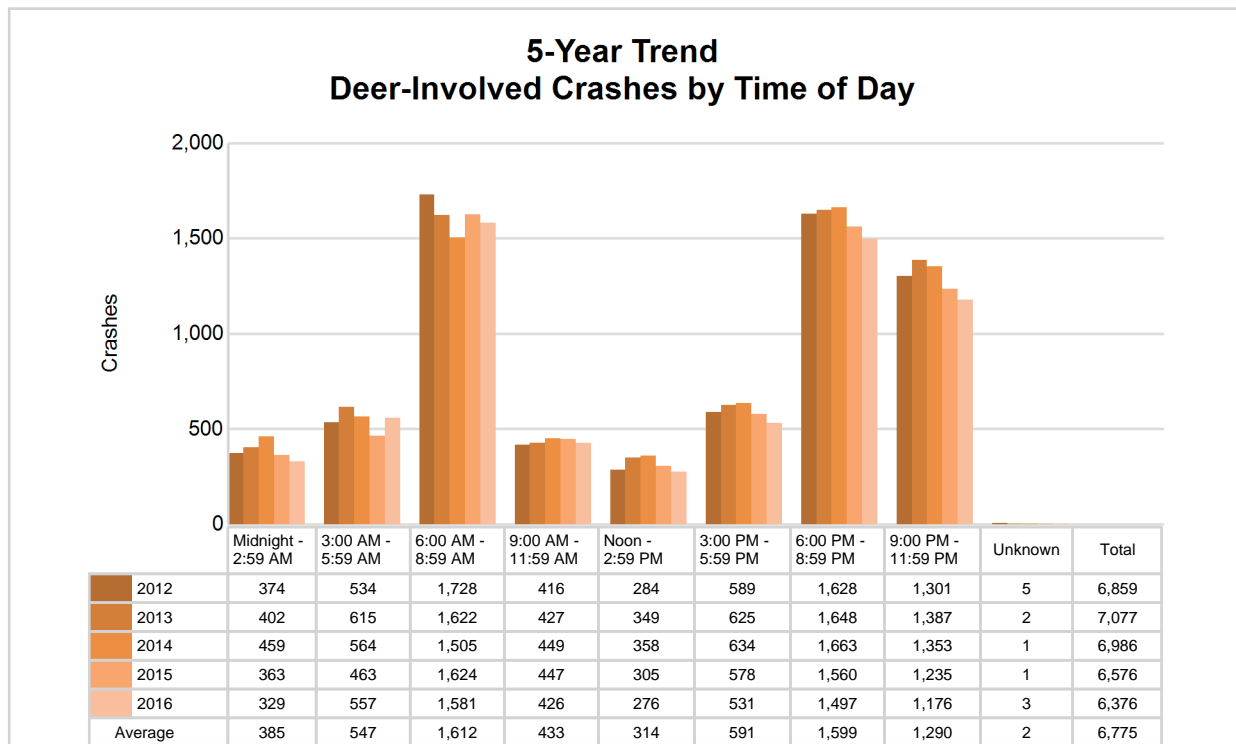
MSP District 7 - Northern Lower Peninsula (continued)

7

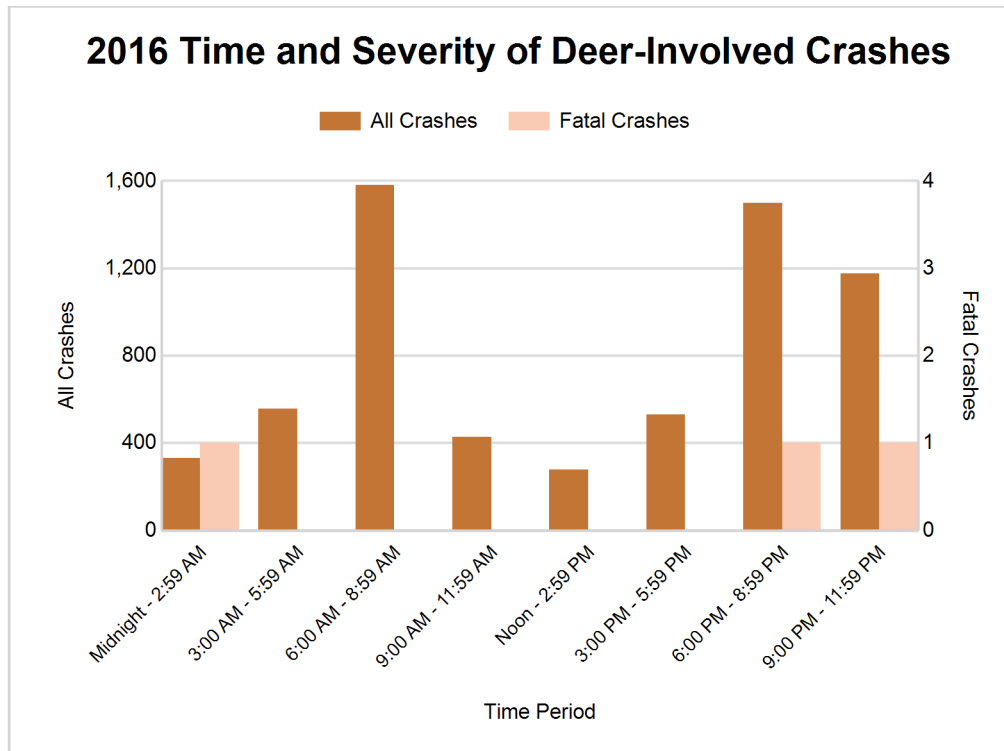
5-Year Trend - Deer-Involved Crashes by Time of Day

Time of Day	2012		2013		2014		2015		2016	
	Total Crashes	Fatal Crashes	Total Crashes	Fatal Crashes	Total Crashes	Fatal Crashes	Total Crashes	Fatal Crashes	Total Crashes	Fatal Crashes
Midnight - 2:59 AM	374	0	402	0	459	0	363	0	329	1
3:00 AM - 5:59 AM	534	0	615	0	564	0	463	0	557	0
6:00 AM - 8:59 AM	1,728	0	1,622	0	1,505	0	1,624	0	1,581	0
9:00 AM - 11:59 AM	416	0	427	0	449	0	447	0	426	0
Noon - 2:59 PM	284	0	349	0	358	0	305	0	276	0
3:00 PM - 5:59 PM	589	0	625	0	634	0	578	0	531	0
6:00 PM - 8:59 PM	1,628	0	1,648	0	1,663	0	1,560	0	1,497	1
9:00 PM - 11:59 PM	1,301	0	1,387	0	1,353	0	1,235	0	1,176	1
Unknown	5	0	2	0	1	0	1	0	3	0
Total	6,859	0	7,077	0	6,986	0	6,576	0	6,376	3

Note: † Indicates that the highest number of total crashes reported in the 5-year period occurred in the same time period



MSP District 7 - Northern Lower Peninsula (continued)



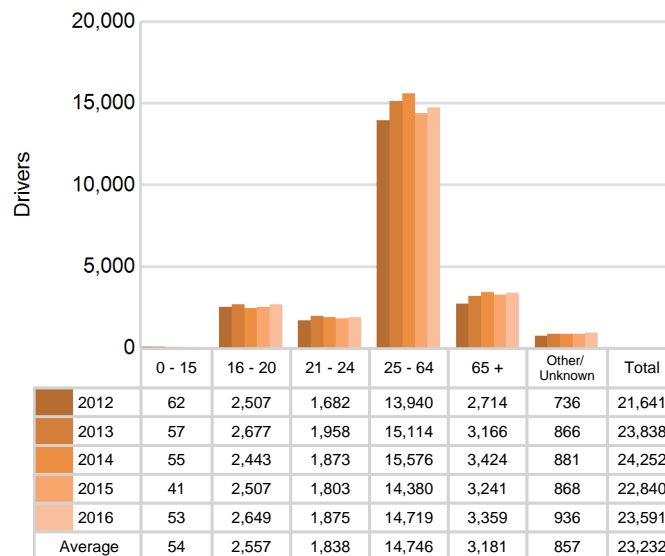
2016 - Reported Motor Vehicle Crashes by County

County	Crashes											Persons	
	Total	Fatal	Injury	Property Damage	Inter-state	US Route	State Route	Local Street	Alcohol-Involved	Drug-Involved	Deer-Involved	Fatalities	Injuries
Alcona	658	2	56	600	0	103	148	402	11	2	482	2	72
Alpena	779	1	114	664	0	173	172	433	24	6	301	1	144
Antrim	792	5	135	652	0	184	155	442	34	10	292	5	184
Benzie	571	1	60	510	0	144	99	327	19	6	288	2	77
Charlevoix	1,034	1	134	899	0	271	199	561	25	2	474	1	183
Cheboygan	1,012	5	150	857	229	60	254	469	34	5	464	5	207
Crawford	411	2	85	324	135	13	98	164	20	8	73	2	105
Emmet	1,479	5	239	1,235	3	504	136	835	46	9	474	5	324
Grand Traverse	3,518	13	529	2,976	0	1,029	430	2,059	127	31	628	15	724
Kalkaska	403	4	90	309	0	103	95	198	29	10	74	4	134
Leelanau	665	4	103	558	0	0	320	344	50	5	287	7	140
Manistee	962	3	103	856	0	255	170	534	30	5	521	3	150
Missaukee	592	5	55	532	0	0	201	390	15	6	363	5	85
Montmorency	371	2	28	341	0	0	167	203	9	0	246	2	31
Oscoda	287	3	34	250	0	0	134	150	10	1	173	3	40
Otsego	903	3	147	753	218	0	249	430	37	10	209	3	195
Presque Isle	548	2	36	510	0	94	161	293	12	3	407	2	44
Roscommon	770	3	109	658	115	99	243	305	24	3	306	5	154
Wexford	1,157	10	178	969	0	352	330	472	52	13	314	10	242
Total	16,912	74	2,385	14,453	700	3,384	3,761	9,011	608	135	6,376	82	3,235

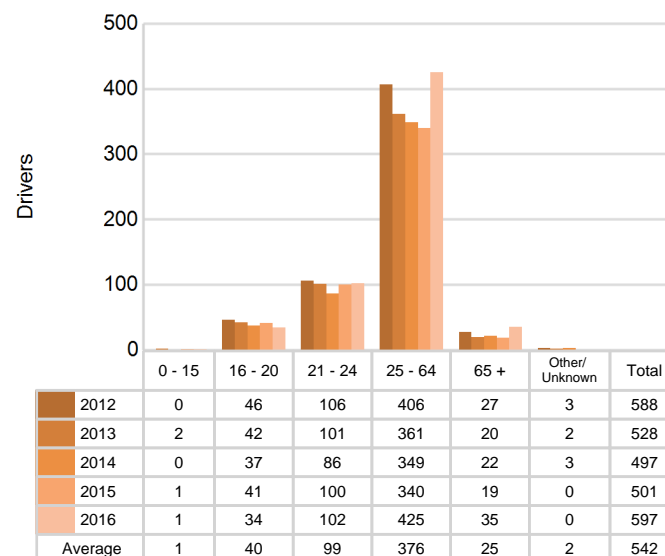
5-Year Trend - Drivers in Crashes Coded Drinking by Driver Age

Driver Age	2012		2013		2014		2015		2016	
	Total Drivers in Crashes	Total Drivers Coded Drinking	Total Drivers in Crashes	Total Drivers Coded Drinking	Total Drivers in Crashes	Total Drivers Coded Drinking	Total Drivers in Crashes	Total Drivers Coded Drinking	Total Drivers in Crashes	Total Drivers Coded Drinking
0 - 15	62	0	57	2	55	0	41	1	53	1
16 - 20	2,507	46	2,677	42	2,443	37	2,507	41	2,649	34
21 - 24	1,682	106	1,958	101	1,873	86	1,803	100	1,875	102
25 - 64	13,940	406	15,114	361	15,576	349	14,380	340	14,719	425
65 +	2,714	27	3,166	20	3,424	22	3,241	19	3,359	35
Unknown	736	3	866	2	881	3	868	0	936	0
Total	21,641	588	23,838	528	24,252	497	22,840	501	23,591	597

5-Year Trend Total Drivers in Crashes by Age



5-Year Trend Total Drivers Coded Drinking by Age



MSP District 7 - Northern Lower Peninsula (continued)

2016 - Bodily Alcohol Concentration (BAC) Results Among All Vehicle Drivers in Alcohol-Involved Crashes by Age

Age Group	Drivers				BAC Result Range for Drivers Coded Drinking				
	Total Drivers in Alcohol-Involved Crashes	Total Drivers Tested in all Crashes	Total Drivers Coded Drinking, Tested	Total Drivers Coded Drinking	BAC = 0.00	BAC 0.01 g/dL to 0.07 g/dL	BAC 0.08 g/dL to 0.16 g/dL	BAC 0.17 g/dL and Above	BAC Not Reported
0 - 15	1	1	1	1	0	0	0	1	0
16 - 20	45	65	29	34	2	7	14	4	7
21 - 24	118	104	86	102	3	7	32	24	36
25 - 64	524	532	356	425	8	51	122	103	141
65 +	53	68	34	35	0	11	12	7	5
Unknown	32	1	0	0	0	0	0	0	0
Total	773	771	506	597	13	76	180	139	189

Notes: BAC measured in grams (g) per deciliter (dL).

BAC may not be reported if drivers are not tested or if the results are not available immediately (as in the case of a blood test).

A driver may be coded by the officer as drinking even though no test is administered.

Alcohol-Involved Crashes

In 2016, there were 773 drivers in alcohol-involved crashes; 597 (77.2%) of those drivers were coded as had-been-drinking by the officer on the crash form.

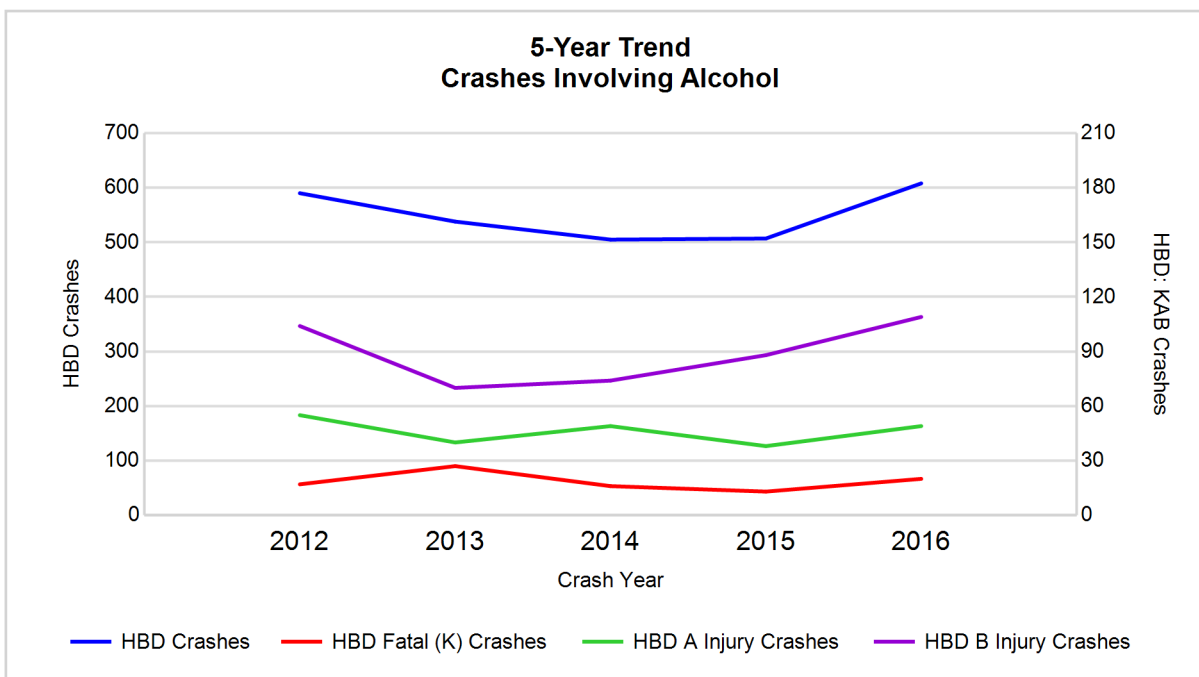
- 319 (53.4%) of the 597 drivers had a blood alcohol concentration (BAC) of 0.08 g/dL (grams per deciliter) or greater, and 139 (43.6%) of the 319 drivers had a BAC at or above 0.17 g/dL.
- 506 (84.8%) of the 597 drivers were coded as had-been-drinking and were tested for alcohol consumption.

5-Year Trend - Crashes Involving Alcohol

Year	All Crashes	HBD Crashes	% HBD	Fatal Crashes	HBD Fatal Crashes	% HBD	A Injury Crashes	HBD A Injury Crashes	% HBD	B Injury Crashes	HBD B Injury Crashes	% HBD
2012	16,124	590	3.7	49	17	34.7	307	55	17.9	712	104	14.6
2013	17,555	538	3.1	70	27	38.6	284	40	14.1	671	70	10.4
2014	17,585	505	2.9	49	16	32.7	268	49	18.3	637	74	11.6
2015	16,435	507	3.1	56	13	23.2	241	38	15.8	645	88	13.6
2016	16,912	608**	3.6	74**	20	27.0	296	49	16.6	748**	109**	14.6

Note: * Indicates that the most recent year is the lowest number or percentage reported in the 5-year period in that column

** Indicates that the most recent year is the highest number or percentage reported in the 5-year period in that column



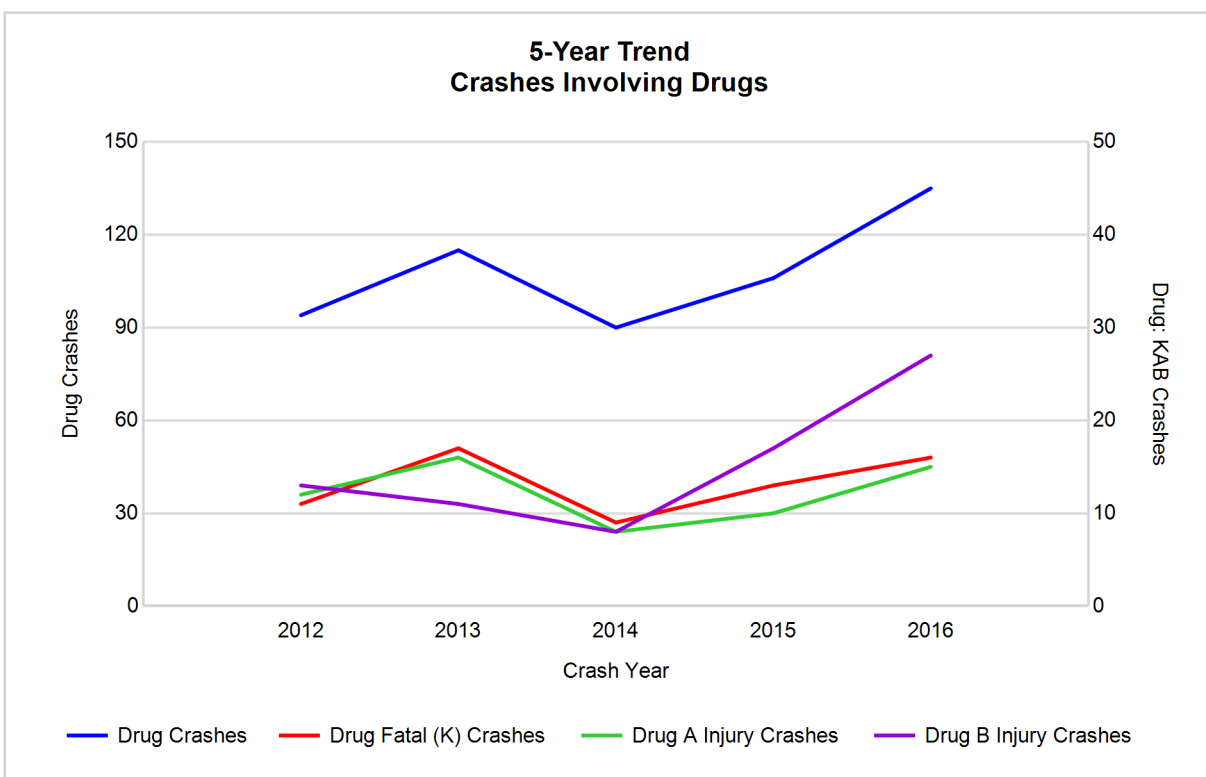
Note: Had-Been-Drinking (HBD)

5-Year Trend - Crashes Involving Drugs

Year	All Crashes	Drug Crashes	% Drug	Fatal Crashes	Drug Fatal Crashes	% Drug	A Injury Crashes	Drug A Injury Crashes	% Drug	B Injury Crashes	Drug B Injury Crashes	% Drug
2012	16,124	94	0.6	49	11	22.4	307	12	3.9	712	13	1.8
2013	17,555	115	0.7	70	17	24.3	284	16	5.6	671	11	1.6
2014	17,585	90	0.5	49	9	18.4	268	8	3.0	637	8	1.3
2015	16,435	106	0.6	56	13	23.2	241	10	4.1	645	17	2.6
2016	16,912	135**	0.8**	74**	16	21.6	296	15	5.1	748**	27**	3.6**

Note: * Indicates that the most recent year is the lowest number or percentage reported in the 5-year period in that column

** Indicates that the most recent year is the highest number or percentage reported in the 5-year period in that column



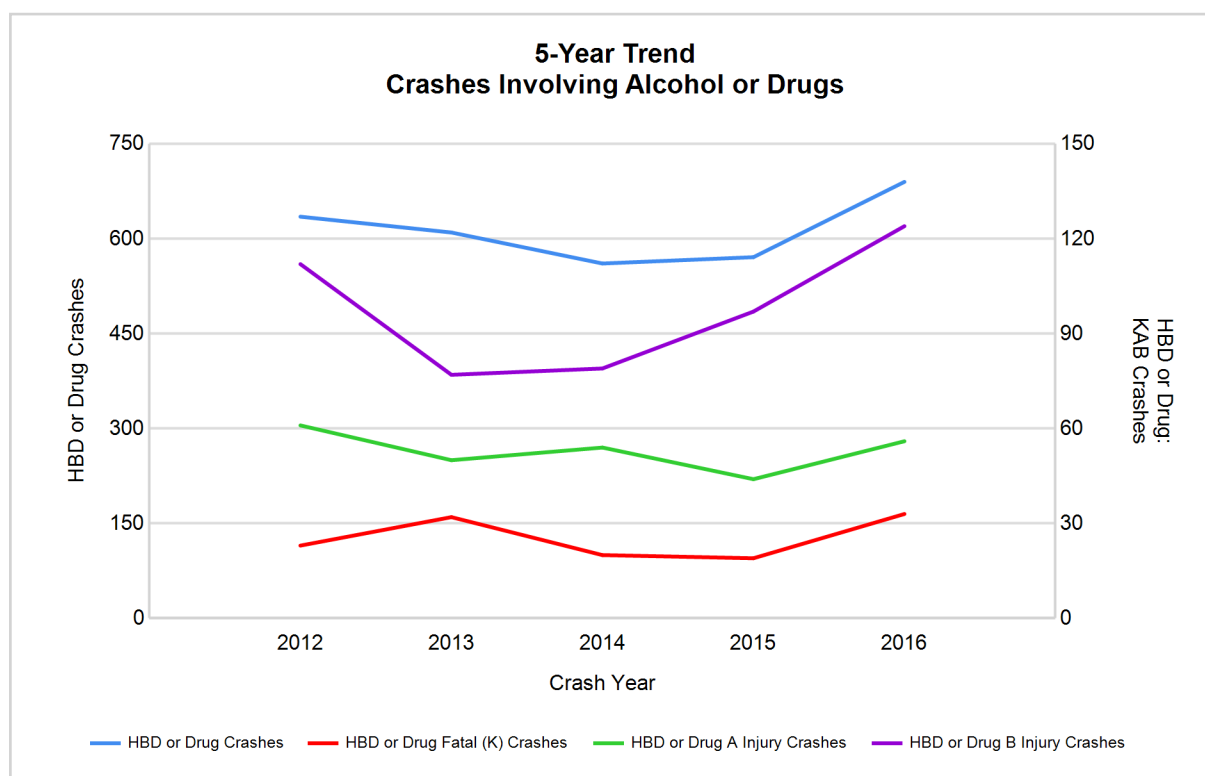
MSP District 7 - Northern Lower Peninsula (continued)

5-Year Trend - Crashes Involving Alcohol or Drugs

Year	All Crashes	HBD or Drug Crashes	% HBD or Drug	Fatal Crashes	HBD or Drug Fatal Crashes	% HBD or Drug	A Injury Crashes	HBD or Drug A Injury Crashes	% HBD or Drug	B Injury Crashes	HBD or Drug B Injury Crashes	% HBD or Drug
2012	16,124	635	3.9	49	23	46.9	307	61	19.9	712	112	15.7
2013	17,555	610	3.5	70	32	45.7	284	50	17.6	671	77	11.5
2014	17,585	561	3.2	49	20	40.8	268	54	20.1	637	79	12.4
2015	16,435	571	3.5	56	19	33.9	241	44	18.3	645	97	15.0
2016	16,912	690**	4.1**	74**	33**	44.6	296	56	18.9	748**	124**	16.6**

Note: * Indicates that the most recent year is the lowest number or percentage reported in the 5-year period in that column

** Indicates that the most recent year is the highest number or percentage reported in the 5-year period in that column



Note: Had-Been-Drinking (HBD)

MSP District 7 - Northern Lower Peninsula (continued)

13

2016 - Restraints Worn Among Vehicle Drivers and Injured Passengers by Vehicle Type

Vehicle Type	Total Occupants			Fatalities			A - Suspected Serious			B - Suspected Minor			C - Possible Injury			No Injury		
	Total	Used Restraint	%	Total	Used Restraint	%	Total	Used Restraint	%	Total	Used Restraint	%	Total	Used Restraint	%	Total	Used Restraint	%
Passenger car, SUV, van	17,734	16,771	94.6	45	28	62.2	217	168	77.4	614	553	90.1	1,441	1,373	95.3	14,894	14,598	98.0
Motor home	371	346	93.3	0	0	0.0	3	3	100.0	8	5	62.5	21	20	95.2	324	318	98.1
Pickup truck	4,766	4,464	93.7	9	4	44.4	40	21	52.5	144	118	81.9	272	259	95.2	4,140	4,055	97.9
Small truck under 10,000 lbs. GVWR	378	358	94.7	1	1	100.0	4	4	100.0	9	8	88.9	25	25	100.0	323	318	98.5
Motorcycle	233	158	67.8	9	3	33.3	40	26	65.0	78	54	69.2	50	40	80.0	53	35	66.0
Moped / goped	26	10	38.5	1	0	0.0	4	0	0.0	12	7	58.3	7	3	42.9	2	0	0.0
Go-cart / golf cart	5	0	0.0	0	0	0.0	1	0	0.0	1	0	0.0	1	0	0.0	2	0	0.0
Snowmobile	50	42	84.0	3	2	66.7	11	8	72.7	13	11	84.6	9	8	88.9	13	13	100.0
Off-Road Vehicle - ORV / All-Terrain Vehicle - ATV	71	45	63.4	3	0	0.0	22	12	54.5	21	16	76.2	17	14	82.4	8	3	37.5
Other	105	66	62.9	1	0	0.0	2	1	50.0	3	1	33.3	4	3	75.0	82	61	74.4
Truck/bus over 10,000 lbs.	471	428	90.9	1	1	100.0	3	2	66.7	11	6	54.5	15	10	66.7	425	409	96.2
Unknown	247	7	2.8	0	0	0.0	1	0	0.0	0	0	0.0	2	2	100.0	9	4	44.4
Total	24,457	22,695	92.8	73	39	53.4	348	245	70.4	914	779	85.2	1,864	1,757	94.3	20,275	19,814	97.7

Note: Restraint Use includes shoulder belt only used, lap belt only used, both lap and shoulder belts used, child restraint used, restraint failure, and helmet worn.

2016 - Restraints Worn Among Vehicle Drivers and Injured Passengers by Age

Age Group	Total Occupants			Fatalities			A - Suspected Serious			B - Suspected Minor			C - Possible Injury			No Injury		
	Total	Used Restraint	%	Total	Used Restraint	%	Total	Used Restraint	%	Total	Used Restraint	%	Total	Used Restraint	%	Total	Used Restraint	%
0 - 15	241	207	85.9	1	0	0.0	18	13	72.2	57	47	82.5	133	118	88.7	32	29	90.6
16 - 20	2,770	2,671	96.4	7	5	71.4	50	32	64.0	148	125	84.5	240	227	94.6	2,314	2,272	98.2
21 - 24	1,938	1,858	95.9	4	2	50.0	34	28	82.4	82	70	85.4	144	127	88.2	1,666	1,627	97.7
25 - 64	15,105	14,571	96.5	41	18	43.9	196	131	66.8	509	429	84.3	1,071	1,016	94.9	13,226	12,936	97.8
65 +	3,464	3,382	97.6	20	14	70.0	48	41	85.4	117	108	92.3	275	268	97.5	2,994	2,945	98.4
Unknown	939	6	0.6	0	0	0.0	2	0	0.0	1	0	0.0	1	1	100.0	43	5	11.6
Total	24,457	22,695	92.8	73	39	53.4	348	245	70.4	914	779	85.2	1,864	1,757	94.3	20,275	19,814	97.7

Note: Restraint Use includes shoulder belt only used, lap belt only used, both lap and shoulder belts used, child restraint used, restraint failure, and helmet worn.

MSP District 7 - Northern Lower Peninsula (continued)

5-Year Trend - Restraint Use Among Drivers

Restraint Use	2012			2013			2014			2015			2016		
	Drivers	Fatal Drivers	Injured Drivers	Drivers	Fatal Drivers	Injured Drivers	Drivers	Fatal Drivers	Injured Drivers	Drivers	Fatal Drivers	Injured Drivers	Drivers	Fatal Drivers	Injured Drivers
No belts available	186	0	30	105	1	22	187	0	21	114	1	18	87	0	17
Shoulder belt only used	13	0	4	13	0	2	38	0	9	45	0	11	79	0	10
Lap belt only used	78	0	7	60	0	10	83	0	5	73	0	3	63	0	12
Both lap & shoulder belts used	19,833	17	1,665	22,002	24	1,827	22,243	16	1,703	20,949	14	1,743	21,591	26	1,874
No belts used	167	11	83	142	14	60	179	4	67	165	13	73	178	12	81
Child restraint used	4	0	0	2	0	0	1	0	0	0	0	0	9	0	1
Child restraint not used, unavailable or improper use	4	0	0	3	0	0	1	0	0	1	0	1	0	0	0
Restraint failure	11	0	2	16	0	1	7	1	1	4	0	0	9	0	2
Restraint use unknown	413	3	51	453	2	53	483	2	59	435	5	43	803	3	47
Helmet worn	259	6	184	245	6	177	240	6	179	207	7	145	219	5	165
Helmet not worn	56	3	47	58	8	46	54	1	38	74	1	56	73	8	50
Helmet use unknown	12	1	4	11	2	5	9	0	3	16	1	8	26	3	14
Uncoded & errors	605	0	5	728	0	2	727	0	2	757	0	2	454	0	3
Total	21,641	41	2,082	23,838	57	2,205	24,252	30	2,087	22,840	42	2,103	23,591	57	2,276

5-Year Trend - Restraint Use Among Drivers Coded Drinking

Restraint Use	2012			2013			2014			2015			2016		
	Drivers	Fatal Drivers	Injured Drivers	Drivers	Fatal Drivers	Injured Drivers	Drivers	Fatal Drivers	Injured Drivers	Drivers	Fatal Drivers	Injured Drivers	Drivers	Fatal Drivers	Injured Drivers
No belts available	3	0	1	1	0	1	6	0	1	4	0	3	3	0	1
Shoulder belt only used	4	0	2	2	0	2	2	0	2	2	0	0	2	0	2
Lap belt only used	2	0	0	3	0	2	2	0	0	1	0	1	1	0	1
Both lap & shoulder belts used	416	3	114	366	5	95	345	3	94	360	2	111	438	4	122
No belts used	44	8	26	36	9	16	32	3	26	40	5	23	36	5	24
Child restraint used	0	0	0	0	0	0	0	0	0	0	0	0	1	0	0
Child restraint not used, unavailable or improper use	0	0	0	0	0	0	0	0	0	0	0	0	0	0	0
Restraint failure	0	0	0	0	0	0	2	0	0	0	0	0	1	0	1
Restraint use unknown	86	1	29	88	1	25	79	1	28	70	1	22	80	0	26
Helmet worn	19	3	14	16	3	11	16	3	11	11	3	8	18	2	13
Helmet not worn	10	0	9	14	4	9	10	0	10	11	0	11	11	3	7
Helmet use unknown	0	0	0	0	0	0	1	0	0	1	0	1	3	1	2
Uncoded & errors	4	0	0	2	0	0	2	0	0	1	0	0	3	0	2
Total	588	15	195	528	22	161	497	10	172	501	11	180	597	15	201

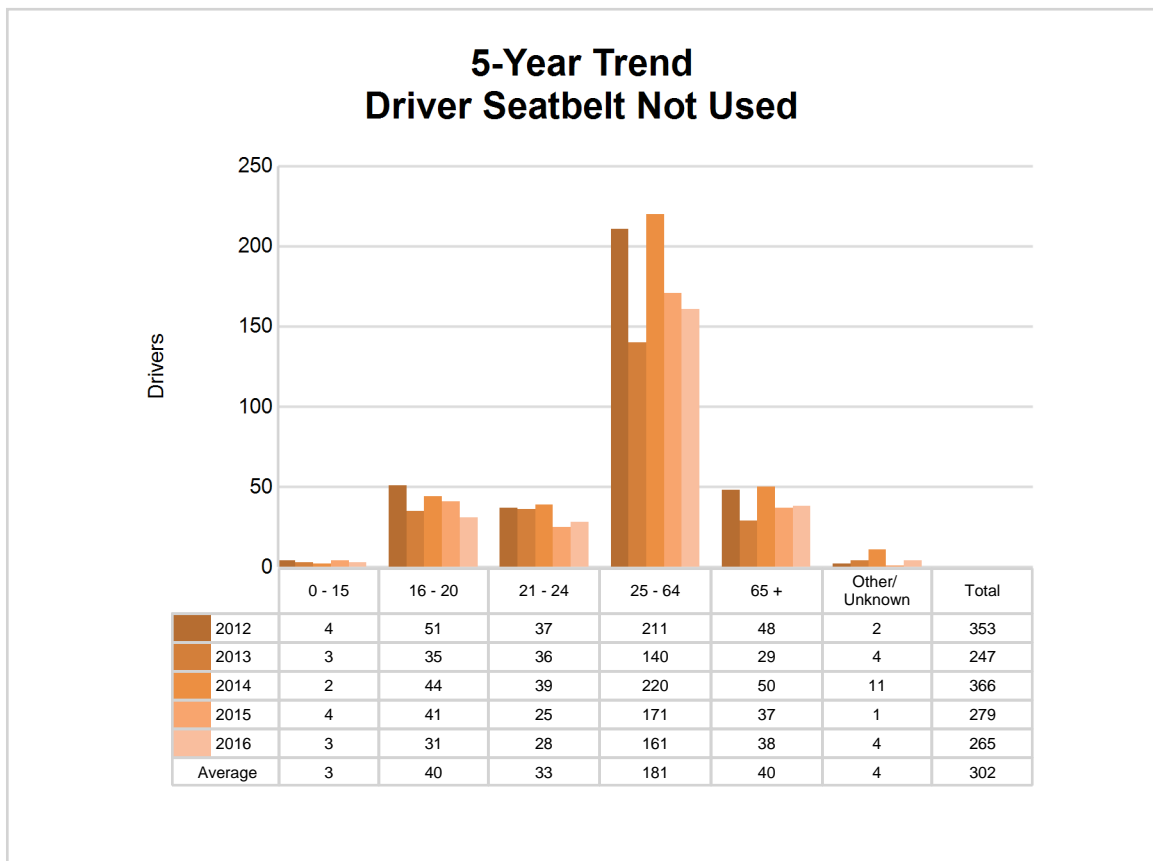
MSP District 7 - Northern Lower Peninsula (continued)

15

5-Year Trend - Seatbelt Not Used Among Drivers by Age

Age Group	2012			2013			2014			2015			2016		
	Drivers	Fatal Drivers	Injured Drivers	Drivers	Fatal Drivers	Injured Drivers	Drivers	Fatal Drivers	Injured Drivers	Drivers	Fatal Drivers	Injured Drivers	Drivers	Fatal Drivers	Injured Drivers
0 - 15	4	0	2	3	0	2	2	0	0	4	0	1	3	0	2
16 - 20	51	1	18	35	0	20	44	1	14	41	1	18	31	1	13
21 - 24	37	3	13	36	2	8	39	0	16	25	1	6	28	1	14
25 - 64	211	4	66	140	10	45	220	2	52	171	8	56	161	7	57
65 +	48	3	14	29	3	7	50	1	6	37	4	10	38	3	11
Unknown	2	0	0	4	0	0	11	0	0	1	0	0	4	0	1
Total	353	11	113	247	15	82	366	4	88	279	14	91	265	12	98

Note: Seatbelt Not Used includes no belts available or no belts used.

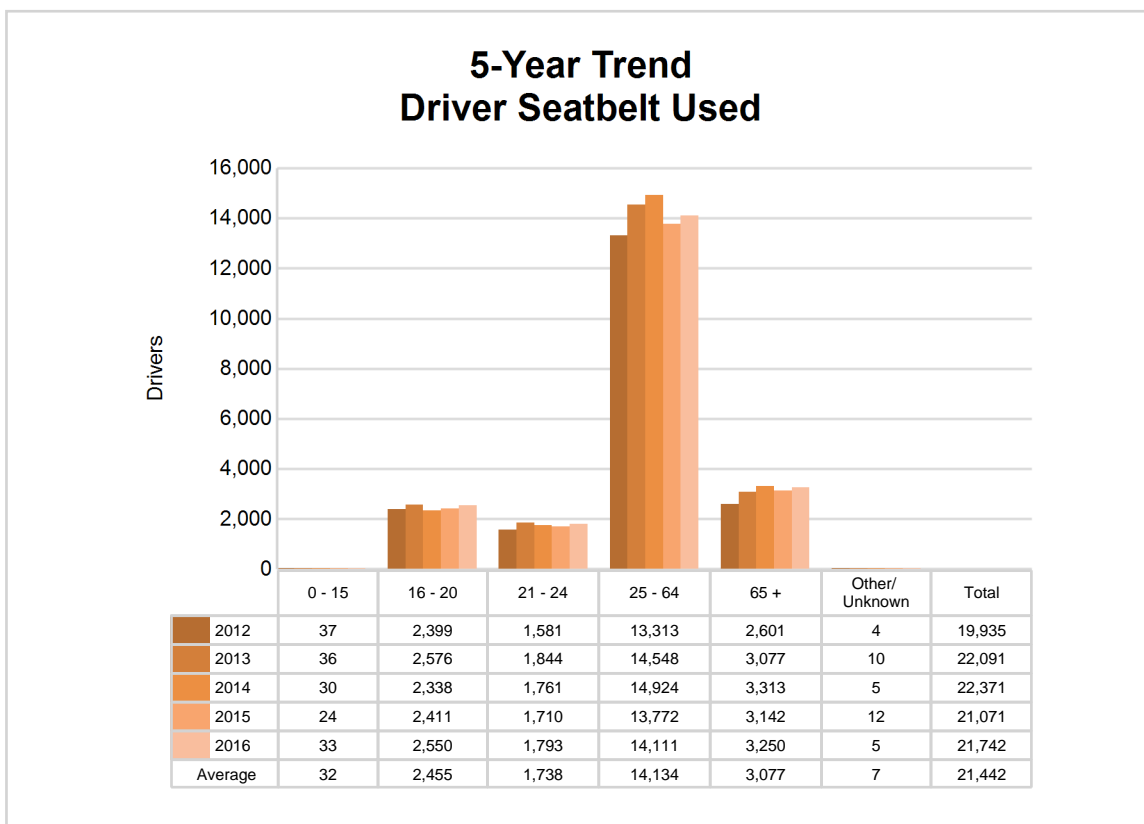


MSP District 7 - Northern Lower Peninsula (continued)

5-Year Trend - Seatbelt Used Among Drivers by Age

Age Group	2012			2013			2014			2015			2016		
	Drivers	Fatal Drivers	Injured Drivers	Drivers	Fatal Drivers	Injured Drivers	Drivers	Fatal Drivers	Injured Drivers	Drivers	Fatal Drivers	Injured Drivers	Drivers	Fatal Drivers	Injured Drivers
0 - 15	37	0	1	36	1	4	30	0	4	24	0	5	33	0	6
16 - 20	2,399	1	266	2,576	4	242	2,338	2	206	2,411	3	264	2,550	4	267
21 - 24	1,581	3	142	1,844	1	174	1,761	3	156	1,710	0	166	1,793	2	164
25 - 64	13,313	8	1,021	14,548	11	1,116	14,924	9	1,050	13,772	7	1,022	14,111	7	1,166
65 +	2,601	5	248	3,077	7	303	3,313	3	301	3,142	4	299	3,250	13	295
Unknown	4	0	0	10	0	1	5	0	1	12	0	1	5	0	0
Total	19,935	17	1,678	22,091	24	1,840	22,371	17	1,718	21,071	14	1,757	21,742	26	1,898

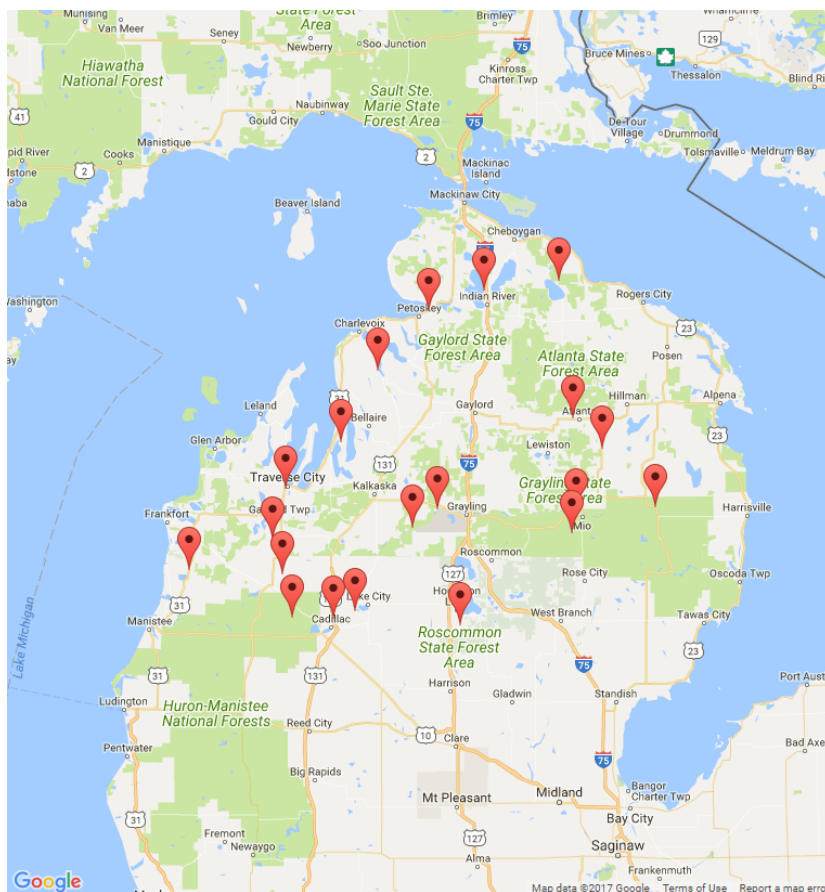
Note: Seatbelt Used includes shoulder belt only used, lap belt only used, both lap and shoulder belts used, and restraint failure.



5-Year Trend - Drivers in Crashes by Hazardous Action

Hazardous Action	2012		2013		2014		2015		2016	
	Total Drivers in Crashes	Drivers in Fatal Crashes	Total Drivers in Crashes	Drivers in Fatal Crashes	Total Drivers in Crashes	Drivers in Fatal Crashes	Total Drivers in Crashes	Drivers in Fatal Crashes	Total Drivers in Crashes	Drivers in Fatal Crashes
None	12,895	31	13,842	38	14,277	28	13,690	28	13,650	42
Speed too fast	2,427	13	3,188	26	3,050	20	2,272	23	2,693	23
Speed too slow	20	0	29	0	29	0	27	0	21	0
Failed to yield	1,526	6	1,596	5	1,843	4	1,723	4	1,776	9
Disregard traffic control	239	2	252	10	266	2	249	0	248	5
Drove wrong way	7	0	14	0	12	0	10	0	14	0
Drove left of center	126	4	142	1	149	5	124	8	165	6
Improper passing	99	1	77	0	103	1	106	0	102	0
Improper lane use	170	0	238	0	221	2	242	0	272	3
Improper turn	122	1	120	0	154	0	130	0	154	1
Improper/no signal	38	1	40	0	52	0	31	0	21	0
Improper backing	308	0	338	0	385	0	358	0	345	0
Unable to stop in assured clear distance	1,803	1	2,083	0	2,011	1	2,080	3	2,074	1
Other	626	4	584	3	696	2	694	5	723	5
Unknown	302	5	377	8	348	2	358	5	550	12
Reckless driving	99	2	82	2	58	2	104	2	85	1
Careless/negligent driving	583	5	588	4	499	1	535	5	572	4
Uncoded & errors	251	1	248	0	99	0	107	0	126	3
Total	21,641	77	23,838	97	24,252	70	22,840	83	23,591	115

MSP District 7 - Northern Lower Peninsula (continued)



The picture above represents all 2016 alcohol-involved fatal crashes in District 7.

In 2016, there were 608 alcohol-involved crashes in District 7:

- 20 K - Fatal Crashes
- 49 A - Suspected Serious Injury Crashes
- 109 B - Suspected Minor Injury Crashes
- 98 C - Possible Injury Crashes
- 332 O - Property Damage Only/No Injury Crashes

Office of Highway Safety Planning

Physical Address:
7150 Harris Drive
Dimondale, Michigan 48821

Mailing Address:
P.O. Box 30634
Lansing, Michigan 48909

Phone: (517) 284-3112
Fax: (517) 284-3151

Find us on the web:
MichiganTrafficCrashFacts.org

