



Office of Highway Safety Planning

2016

MTCF
 Michigan Traffic
 Crash Facts

Michigan Traffic Crash Facts

Reporting Criteria

Please pay particular attention to the wording when interpreting the three levels of data gathered for this report.

Crash

The Crash Level analyzes data related to crash events and returns one result per crash.

Examples: Time, weather, and location.

Units

The Units Level analyzes the experience of the units in the crash and returns one result per vehicle, driver, pedestrian, bicyclist, or train.

Examples: Vehicle type, driver condition, and unit events.

People

The People Level analyzes the experience of the people involved in the crash and returns one result per occupant/person/party.

Examples: Age, injury severity, and seat belt or helmet use.

KABCO Injury Indicator:

K = Killed

A = Suspected Serious Injury

B = Suspected Minor Injury

C = Possible Injury

O = No Injury

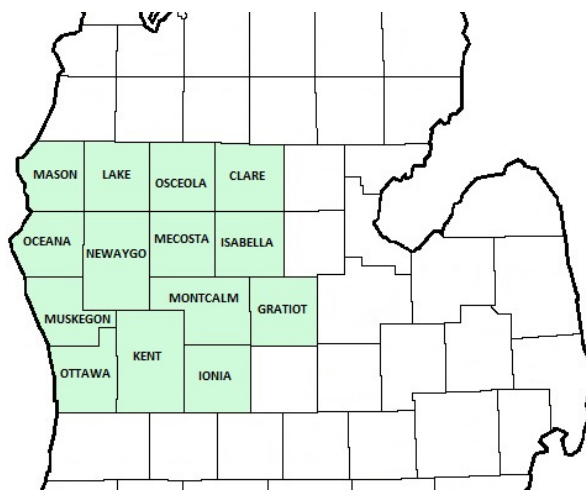
Property Damage Only (PDO)



Michigan State Police (MSP) District 6 - West

2016 Traffic Crash Data & 2012-2016 5-Year Trends

Beginning in 2011, District 6 is comprised of Clare, Gratiot, Ionia, Isabella, Kent, Lake, Mason, Mecosta, Montcalm, Muskegon, Newaygo, Oceana, Osceola, and Ottawa counties. Trend tables for this report are based on those counties.



Sources:

The crashes in this report occurred on public roadways in Michigan and resulted in injuries, fatalities, or property damage (with \$1,000 as a reporting threshold). The information was gathered from Michigan Traffic Crash Report Forms (UD-10) submitted by local police departments, sheriff's offices, and the Michigan State Police. Other related information was obtained from the departments of Transportation, State, and Community Health.

This page left intentionally blank

MSP District 6 - West

- There were 52,374 crashes in District 6 during 2016. [Page 1]
- There were 157 fatalities in 144 fatal crashes in 2016 in District 6. [Page 1]
- A total of 12,186 injuries resulted from 8,928 injury crashes. [Page 1]
- There were 43,302 property damage only crashes (no fatalities or injuries). [Page 1]
- December had the highest number of crashes (6,145). [Pages 1-2]
- September had the highest number of fatal crashes (18) and fatalities (19). [Pages 1-2]
- August had the highest number of injury crashes (857) and September had the highest number of injuries (1,186). [Page 1]
- December had the highest number of property damage only crashes (5,322). [Page 1]
- Of all vehicles involved in fatal crashes, 23 (9.5%) were motorcycles. [Page 1]
- Friday was the day of the week with the highest number of crashes (8,916) and Monday and Saturday had the highest number of fatal crashes (23 each). [Pages 2-3]
- The 3:00 PM – 5:59 PM time period had the highest number of crashes (11,572). This is true for each year from 2012 to 2016. The 3:00 PM – 5:59 PM time period also had the highest number of fatal crashes (40). [Pages 5-6]
- During the period from 2012 to 2016, the highest number of deer crashes occurred in 2016 (10,785). The 6:00 PM – 8:59 PM time period consistently had the highest number of deer-involved crashes during the five-year period. There were three fatal crashes involving deer in 2016. [Pages 7-8]
- Kent County (42.4%) had the highest number of crashes in District 6 in 2016, followed by Ottawa County (16.1%), and Muskegon County (9.3%). [Page 8]
- Kent County (36.3%) had the highest number of fatalities in District 6 in 2016, followed by Ottawa County (17.2%), and Muskegon County (13.4%). [Page 8]
- The highest number of drivers in crashes (85,751) occurred during 2016 and the highest number of drivers coded drinking in crashes (1,779) occurred during 2012 within the five-year period. [Page 9]
- A total of 1,704 crashes involved alcohol in 2016, but 2012 had the highest number of alcohol-involved crashes, with 1,818. [Page 10]
- Alcohol-involved fatal crashes were the lowest in 2016 during the five-year period from 2012 to 2016 at 31. [Page 10]
- A total of 381 crashes and 40 suspected serious injury crashes involved drugs in 2016, both the highest during the five-year period. The highest number of fatal crashes involving drugs occurred in 2014 (29). [Page 11]
- There were 75,556 drivers wearing seatbelts and 817 drivers not wearing seatbelts in crashes in 2016. Of the 817 drivers not wearing seat belts, 24 (2.9%) were killed and 227 (27.8%) were injured. [Pages 14-16]
- The most common hazardous action coded for drivers in 2016 in all crashes was unable to stop in assured clear distance (10,915), while the most common hazardous action coded for drivers in fatal crashes was disregard traffic control (26). [Page 17]

District 6 Experience

In 2016:

There were 85,751 drivers involved in 52,374 motor vehicle crashes in MSP District 6. Of those crashes, 144 were classified as fatal, resulting in 157 fatalities. An additional 12,186 persons were injured.

District 6 experienced the highest number of motor vehicle crashes (6,145) in December, the highest number of fatal crashes (18) and the highest number of persons killed (19) in September.

Michigan driver statistics indicate 7.0 percent of licensed drivers in District 6 were age 16-20, and 12.4 percent of drivers in crashes were also in that age group.

2016 - Crashes and Injuries by Month

Month	Crashes				Persons	
	Total	Fatal	Injury	Property Damage Only (PDO)	Fatalities	Injuries
January	4,968	8	694	4,266	8	902
February	3,944	10	617	3,317	13	833
March	3,767	6	608	3,153	8	818
April	3,421	12	575	2,834	12	795
May	3,994	11	773	3,210	12	1,048
June	3,948	14	772	3,162	15	1,101
July	3,613	14	826	2,773	15	1,130
August	3,923	14	857	3,052	16	1,174
September	4,155	18	852	3,285	19	1,186
October	5,019	14	787	4,218	15	1,096
November	5,477	14	753	4,710	14	1,003
December	6,145	9	814	5,322	10	1,100
Total	52,374	144	8,928	43,302	157	12,186

2016 - Driver Statistics

Age Group	Statewide			Driver Rates	
	2016 Population	Licensed Drivers	Drivers in Crashes	Per 10k Population	Per 10k Licensed
0 - 15	320,048	8,460	145	4.5	171.4
16 - 20	116,280	76,387	10,646	915.5	1,393.7
21 - 24	96,486	75,535	9,508	985.4	1,258.8
25 - 64	788,937	722,617	51,287	650.1	709.7
65 +	226,796	206,257	7,739	341.2	375.2
Unknown	0	0	6,426	--	--
Total	1,548,547	1,089,256	85,751	553.8	787.2

2016 - Vehicles in Crashes

Vehicle Type	Motor Vehicles		Fatal Crashes		Injury Crashes	PDO Crashes
	Number of Vehicles	% of Total	Number	% of Total	Number	Number
Passenger car, SUV, van	69,038	80.5	166	68.3	12,875	55,997
Motor home	1,175	1.4	2	0.8	234	939
Pickup truck	10,043	11.7	33	13.6	1,746	8,264
Small truck under 10,000 lbs. GVWR	773	0.9	0	0.0	115	658
Motorcycle	590	0.7	23	9.5	448	119
Moped / goped	89	0.1	0	0.0	75	14
Go-cart / golf cart	5	0.0	0	0.0	2	3
Snowmobile	14	0.0	0	0.0	9	5
Off-Road Vehicle - ORV / All-Terrain Vehicle - ATV	60	0.1	1	0.4	46	13
Other	412	0.5	3	1.2	97	312
Truck/bus over 10,000 lbs.	1,845	2.2	14	5.8	305	1,526
Unknown	1,707	2.0	1	0.4	112	1,594
Total	85,751	100.0	243	100.0	16,064	69,444

MSP District 6 - West (continued)

5-Year Trend - Crashes by Month

Month	2012		2013		2014		2015		2016	
	Total Crashes	Fatal Crashes	Total Crashes	Fatal Crashes	Total Crashes	Fatal Crashes	Total Crashes	Fatal Crashes	Total Crashes	Fatal Crashes
January	4,749	5	4,852	11	6,393	2	5,049	14	4,968	8
February	3,867	14	4,935	4	5,108	12	4,572	5	3,944	10
March	3,081	11	3,421	5	3,771	11	3,247	6	3,767	6
April	2,791	11	2,952	4	2,605	9	2,890	6	3,421	12
May	3,595	16	3,478	18	3,328	13	3,656	16	3,994	11
June	3,407	9	3,261	8	3,443	10	3,664	13	3,948	14
July	3,121	17	3,259	16	3,130	22	3,600	12	3,613	14
August	3,124	10	3,148	15	3,219	16	3,236	28	3,923	14
September	3,279	16	3,446	7	3,404	14	3,603	13	4,155	18
October	4,682	10	4,495	22	4,655	12	4,982	13	5,019	14
November	4,340	9	5,604	8	6,478	8	5,101	15	5,477	14
December	4,398	10	5,260	8	3,771	8	4,201	12	6,145	9
Total	44,434	138	48,111	126	49,305	137	47,801	153	52,374	144

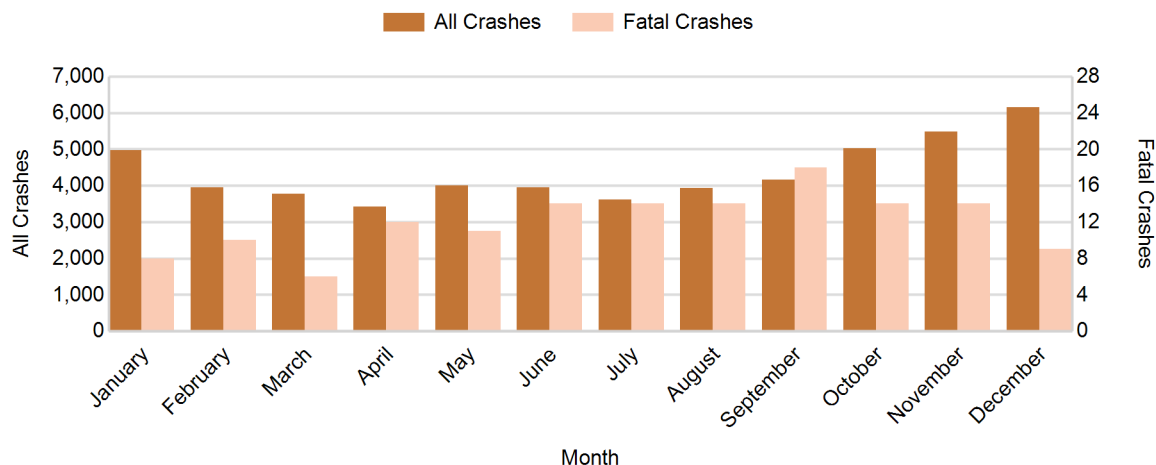
Note: † Indicates that the highest number of total crashes reported in the 5-year period occurred in the same month

5-Year Trend - Crashes by Day of Week

Day	2012		2013		2014		2015		2016	
	Total Crashes	Fatal Crashes	Total Crashes	Fatal Crashes	Total Crashes	Fatal Crashes	Total Crashes	Fatal Crashes	Total Crashes	Fatal Crashes
Monday	6,014	19	7,114	15	6,984	15	6,975	20	7,314	23
Tuesday	6,205	16	7,604	22	7,337	12	7,111	17	7,820	20
Wednesday	6,257	13	7,001	15	7,873	18	7,357	21	8,165	18
Thursday	6,713	17	7,571	18	7,840	20	7,236	18	8,207	21
Friday	8,411 †	23	7,741 †	19	8,331 †	21	7,794 †	23	8,916 †	22
Saturday	6,068	25	6,240	18	6,032	24	6,446	26	6,633	23
Sunday	4,766	25	4,840	19	4,908	27	4,882	28	5,319	17
Total	44,434	138	48,111	126	49,305	137	47,801	153	52,374	144

Note: † Indicates that the highest number of total crashes reported in the 5-year period occurred on the same day of the week

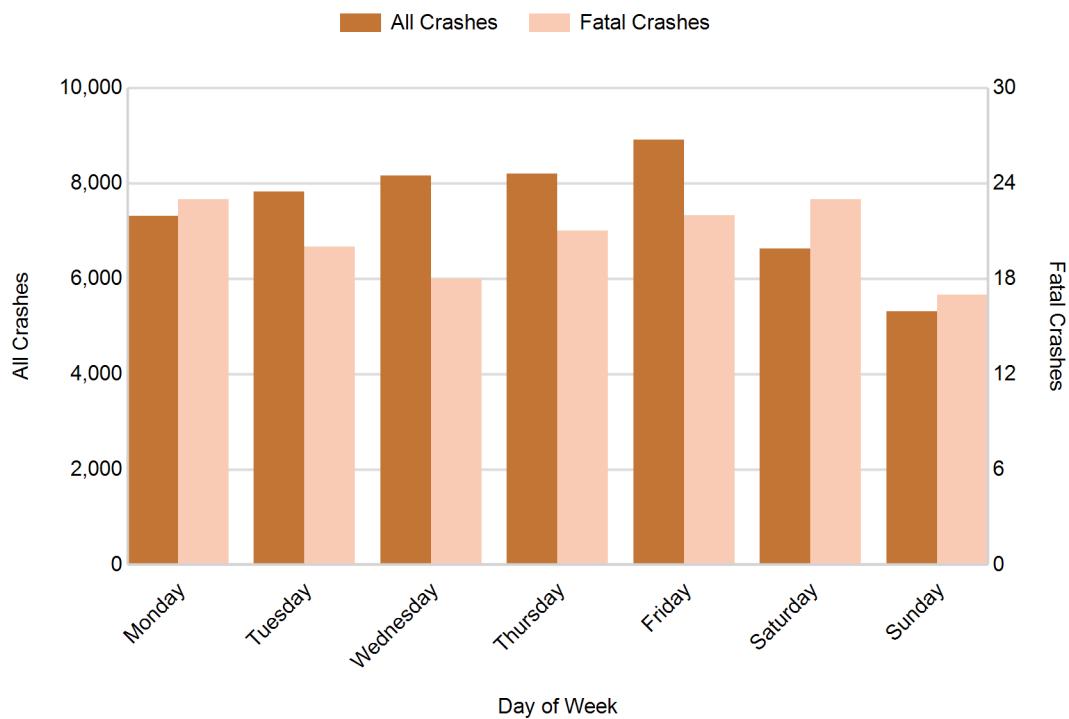
2016 Crashes by Month



2016 - Crashes by Day of Week

Day	All Crashes		Fatal Crashes		Injury Crashes			PDO Crashes
	Number	% of Total	Number	% of Fatal	A	B	C	Number
Monday	7,314	14.0	23	16.0	118	311	793	6,069
Tuesday	7,820	14.9	20	13.9	140	340	841	6,479
Wednesday	8,165	15.6	18	12.5	113	343	902	6,789
Thursday	8,207	15.7	21	14.6	112	338	905	6,831
Friday	8,916	17.0	22	15.3	149	389	974	7,382
Saturday	6,633	12.7	23	16.0	143	379	677	5,411
Sunday	5,319	10.2	17	11.8	138	286	537	4,341
Total	52,374	100.0	144	100.0	913	2,386	5,629	43,302

2016 Day of Week and Severity

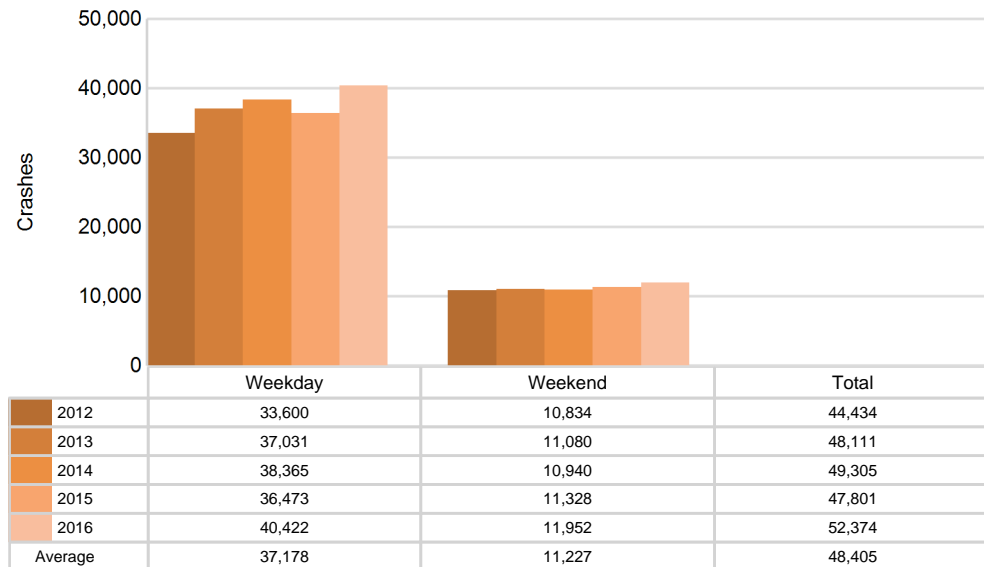


MSP District 6 - West (continued)

5-Year Trend - Crashes by Weekday and Weekend

Portion of Week	2012		2013		2014		2015		2016	
	Total Crashes	Fatal Crashes	Total Crashes	Fatal Crashes	Total Crashes	Fatal Crashes	Total Crashes	Fatal Crashes	Total Crashes	Fatal Crashes
Weekday	33,600	88	37,031	89	38,365	86	36,473	99	40,422	104
Weekend	10,834	50	11,080	37	10,940	51	11,328	54	11,952	40
Total	44,434	138	48,111	126	49,305	137	47,801	153	52,374	144

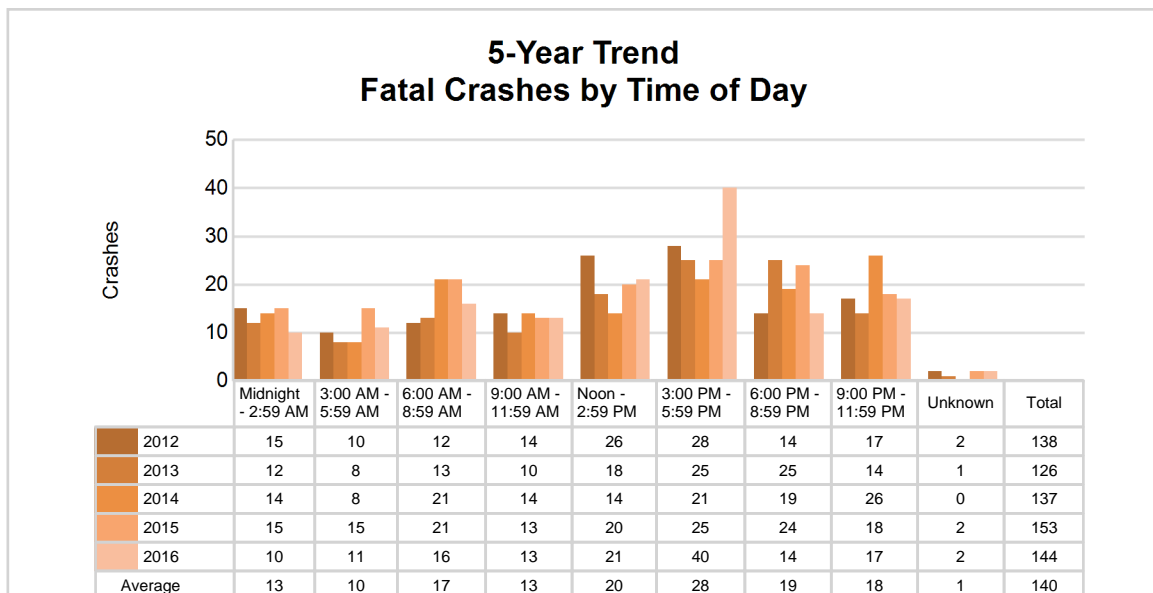
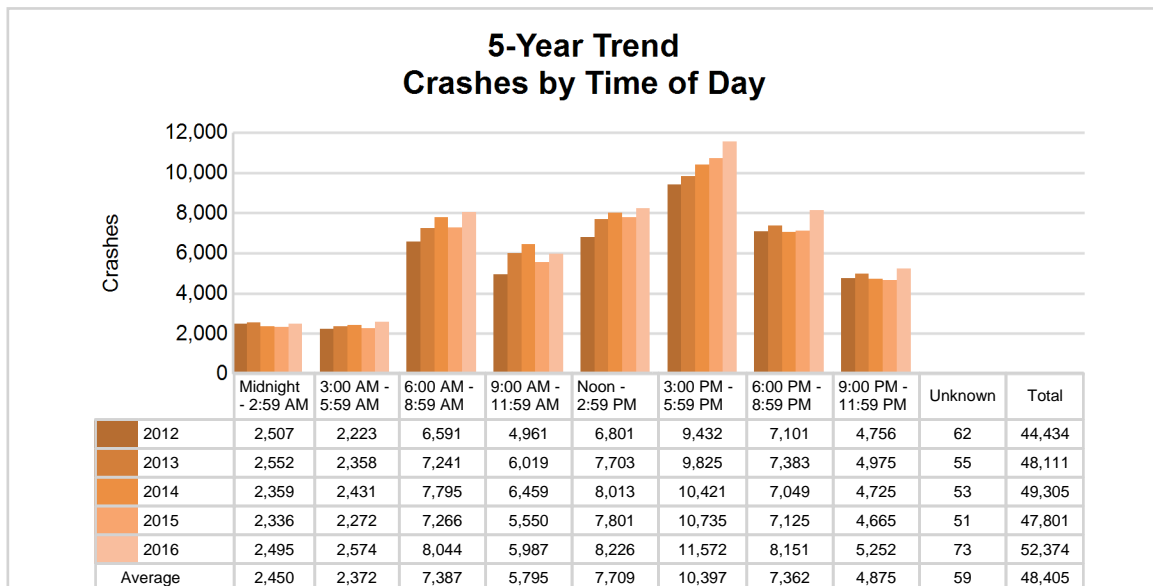
5-Year Crash Trends by Weekday (Monday - Friday) and Weekend (Saturday & Sunday)



5-Year Trend - Crashes by Time of Day

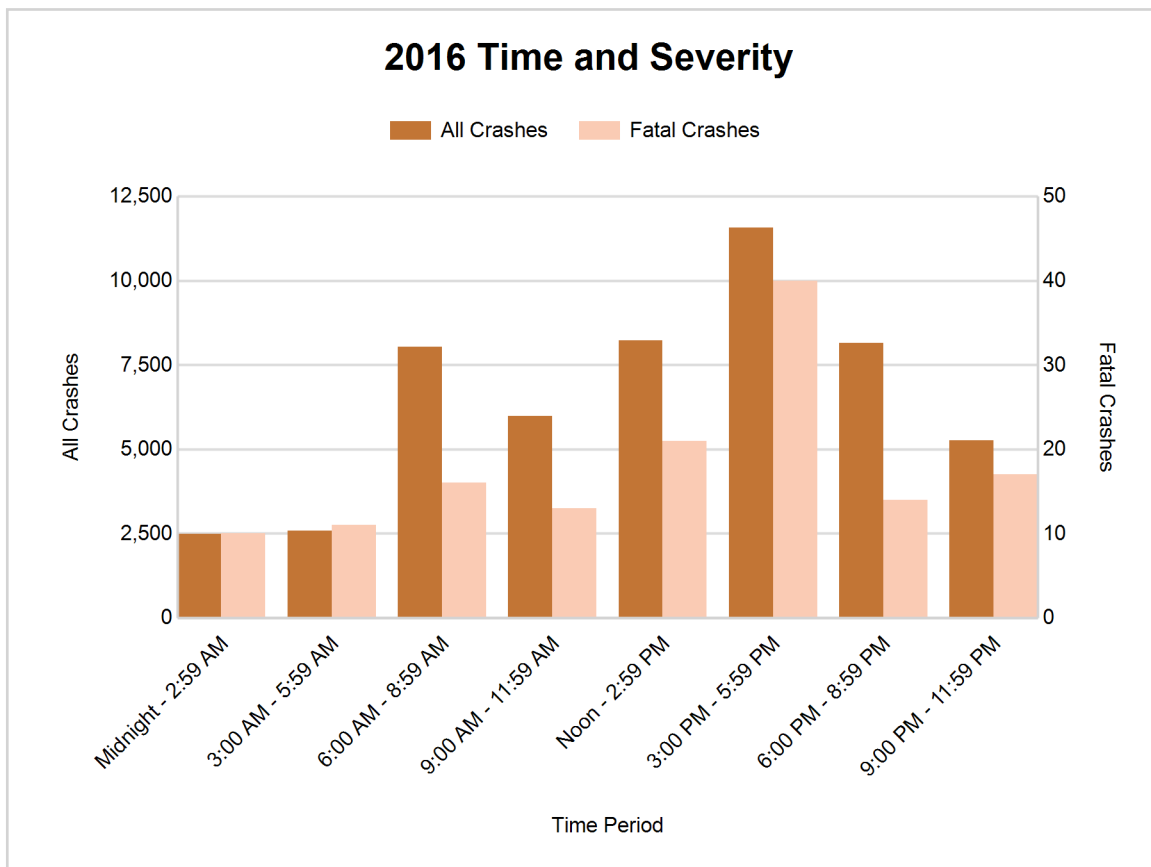
Time of Day	2012		2013		2014		2015		2016	
	Total Crashes	Fatal Crashes	Total Crashes	Fatal Crashes	Total Crashes	Fatal Crashes	Total Crashes	Fatal Crashes	Total Crashes	Fatal Crashes
Midnight - 2:59 AM	2,507	15	2,552	12	2,359	14	2,336	15	2,495	10
3:00 AM - 5:59 AM	2,223	10	2,358	8	2,431	8	2,272	15	2,574	11
6:00 AM - 8:59 AM	6,591	12	7,241	13	7,795	21	7,266	21	8,044	16
9:00 AM - 11:59 AM	4,961	14	6,019	10	6,459	14	5,550	13	5,987	13
Noon - 2:59 PM	6,801	26	7,703	18	8,013	14	7,801	20	8,226	21
3:00 PM - 5:59 PM	9,432 †	28	9,825 †	25	10,421 †	21	10,735 †	25	11,572 †	40
6:00 PM - 8:59 PM	7,101	14	7,383	25	7,049	19	7,125	24	8,151	14
9:00 PM - 11:59 PM	4,756	17	4,975	14	4,725	26	4,665	18	5,252	17
Unknown	62	2	55	1	53	0	51	2	73	2
Total	44,434	138	48,111	126	49,305	137	47,801	153	52,374	144

Note: † Indicates that the highest number of total crashes reported in the 5-year period occurred in the same time period



2016 - Time and Severity

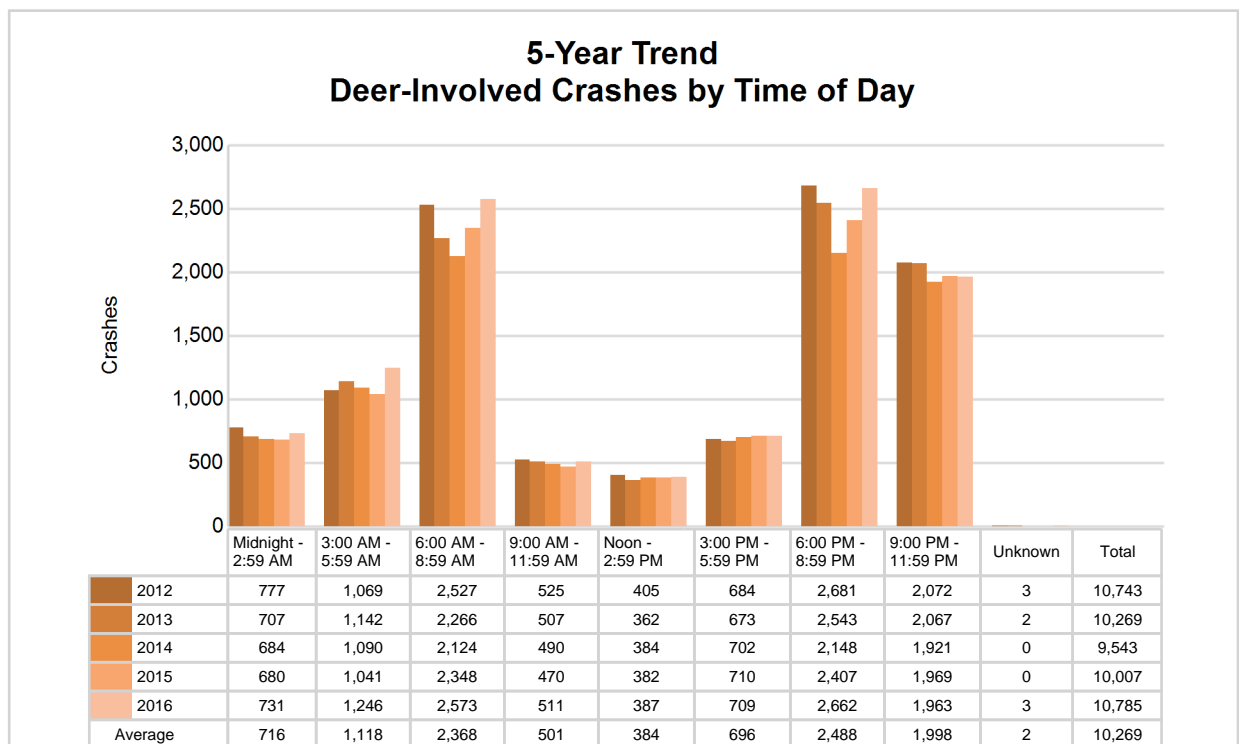
Time of Day	All Crashes		Fatal Crashes		Injury Crashes			PDO Crashes
	Number	% of Total	Number	% of Fatal	A	B	C	Number
Midnight - 2:59 AM	2,495	4.8	10	6.9	64	143	211	2,067
3:00 AM - 5:59 AM	2,574	4.9	11	7.6	37	96	192	2,238
6:00 AM - 8:59 AM	8,044	15.4	16	11.1	86	243	747	6,952
9:00 AM - 11:59 AM	5,987	11.4	13	9.0	98	290	664	4,922
Noon - 2:59 PM	8,226	15.7	21	14.6	181	423	1,116	6,485
3:00 PM - 5:59 PM	11,572	22.1	40	27.8	206	588	1,487	9,251
6:00 PM - 8:59 PM	8,151	15.6	14	9.7	126	366	738	6,907
9:00 PM - 11:59 PM	5,252	10.0	17	11.8	114	234	473	4,414
Unknown	73	0.1	2	1.4	1	3	1	66
Total	52,374	100.0	144	100.0	913	2,386	5,629	43,302

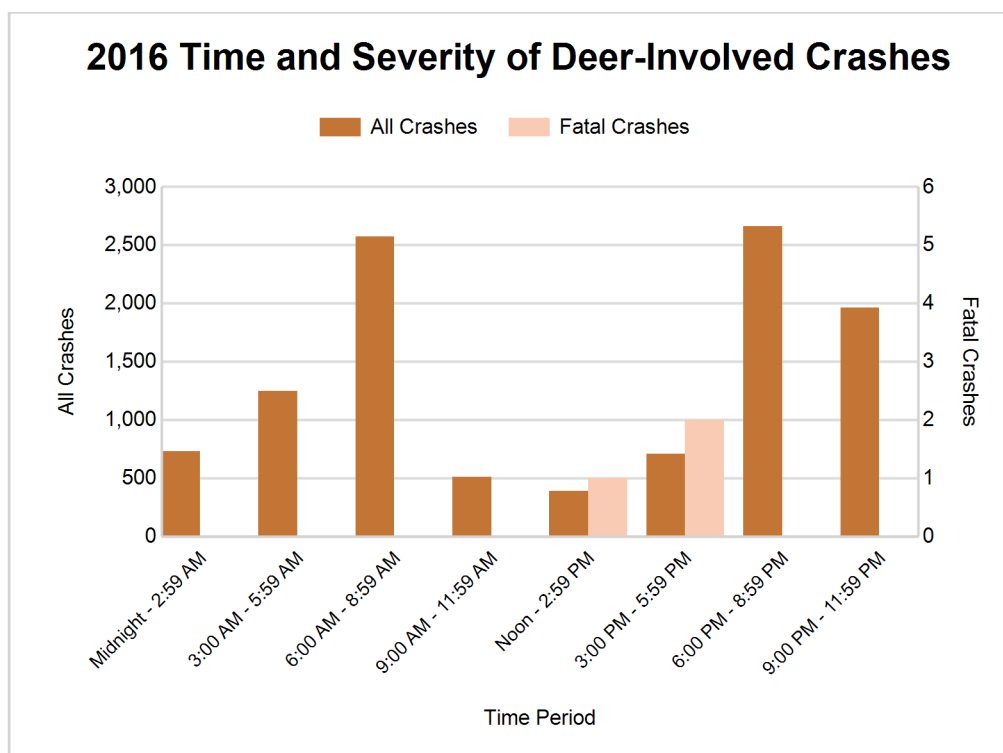


5-Year Trend - Deer-Involved Crashes by Time of Day

Time of Day	2012		2013		2014		2015		2016	
	Total Crashes	Fatal Crashes	Total Crashes	Fatal Crashes	Total Crashes	Fatal Crashes	Total Crashes	Fatal Crashes	Total Crashes	Fatal Crashes
Midnight - 2:59 AM	777	0	707	1	684	0	680	0	731	0
3:00 AM - 5:59 AM	1,069	0	1,142	0	1,090	0	1,041	0	1,246	0
6:00 AM - 8:59 AM	2,527	0	2,266	1	2,124	0	2,348	1	2,573	0
9:00 AM - 11:59 AM	525	1	507	0	490	0	470	0	511	0
Noon - 2:59 PM	405	0	362	0	384	0	382	0	387	1
3:00 PM - 5:59 PM	684	0	673	0	702	1	710	0	709	2
6:00 PM - 8:59 PM	2,681 †	0	2,543 †	1	2,148 †	0	2,407 †	0	2,662 †	0
9:00 PM - 11:59 PM	2,072	1	2,067	1	1,921	1	1,969	0	1,963	0
Unknown	3	0	2	0	0	0	0	0	3	0
Total	10,743	2	10,269	4	9,543	2	10,007	1	10,785	3

Note: † Indicates that the highest number of total crashes reported in the 5-year period occurred in the same time period





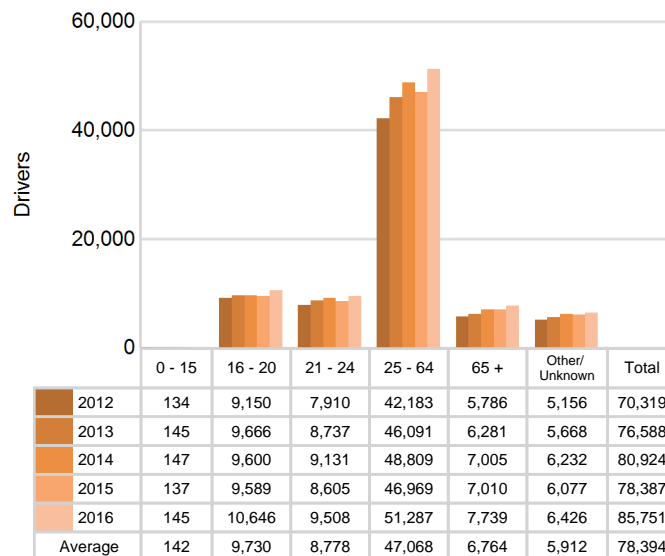
2016 - Reported Motor Vehicle Crashes by County

County	Crashes											Persons	
	Total	Fatal	Injury	Property Damage	Inter-state	US Route	State Route	Local Street	Alcohol-Involved	Drug-Involved	Deer-Involved	Fatalities	Injuries
Clare	1,140	6	128	1,006	0	412	199	526	29	16	558	8	184
Gratiot	1,688	2	203	1,483	0	408	306	974	38	19	917	2	290
Ionia	1,663	7	260	1,396	346	0	524	791	44	25	471	7	370
Isabella	2,859	4	383	2,472	0	664	380	1,810	77	20	980	6	533
Kent	22,183	55	4,266	17,862	2,546	2,257	4,530	12,842	806	147	1,481	57	5,771
Lake	445	3	70	372	0	108	69	267	22	0	238	3	101
Mason	1,389	5	123	1,261	0	555	38	796	21	9	739	5	156
Mecosta	1,954	2	233	1,719	0	265	711	977	40	12	941	2	294
Montcalm	2,141	5	346	1,790	0	136	743	1,257	81	14	975	6	464
Muskegon	4,864	18	915	3,931	70	1,082	557	3,146	154	33	570	21	1,282
Newaygo	1,525	6	236	1,283	0	0	524	996	56	15	668	6	338
Oceana	980	5	134	841	0	251	117	605	38	8	497	5	181
Osceola	1,115	2	119	994	0	369	150	592	22	4	634	2	160
Ottawa	8,428	24	1,512	6,892	848	928	795	5,839	276	59	1,116	27	2,062
Total	52,374	144	8,928	43,302	3,810	7,435	9,643	31,418	1,704	381	10,785	157	12,186

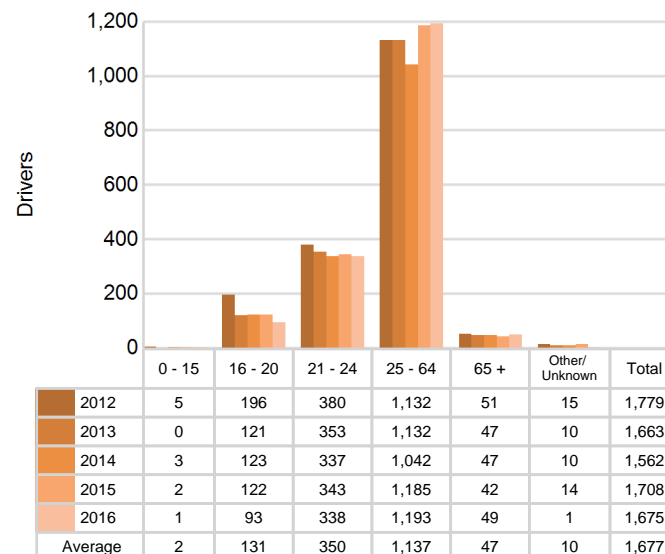
5-Year Trend - Drivers in Crashes Coded Drinking by Driver Age

Driver Age	2012		2013		2014		2015		2016	
	Total Drivers in Crashes	Total Drivers Coded Drinking	Total Drivers in Crashes	Total Drivers Coded Drinking	Total Drivers in Crashes	Total Drivers Coded Drinking	Total Drivers in Crashes	Total Drivers Coded Drinking	Total Drivers in Crashes	Total Drivers Coded Drinking
0 - 15	134	5	145	0	147	3	137	2	145	1
16 - 20	9,150	196	9,666	121	9,600	123	9,589	122	10,646	93
21 - 24	7,910	380	8,737	353	9,131	337	8,605	343	9,508	338
25 - 64	42,183	1,132	46,091	1,132	48,809	1,042	46,969	1,185	51,287	1,193
65 +	5,786	51	6,281	47	7,005	47	7,010	42	7,739	49
Unknown	5,156	15	5,668	10	6,232	10	6,077	14	6,426	1
Total	70,319	1,779	76,588	1,663	80,924	1,562	78,387	1,708	85,751	1,675

**5-Year Trend
Total Drivers in Crashes by Age**



**5-Year Trend
Total Drivers Coded Drinking by Age**



2016 - Bodily Alcohol Concentration (BAC) Results Among All Vehicle Drivers in Alcohol-Involved Crashes by Age

Age Group	Drivers				BAC Result Range for Drivers Coded Drinking				
	Total Drivers in Alcohol-Involved Crashes	Total Drivers Tested in all Crashes	Total Drivers Coded Drinking, Tested	Total Drivers Coded Drinking	BAC = 0.00	BAC 0.01 g/dL to 0.07 g/dL	BAC 0.08 g/dL to 0.16 g/dL	BAC 0.17 g/dL and Above	BAC Not Reported
0 - 15	3	2	1	1	0	0	0	1	0
16 - 20	165	165	79	93	1	15	32	16	29
21 - 24	419	349	272	338	2	39	96	75	126
25 - 64	1,637	1,278	951	1,193	18	105	296	313	461
65 +	105	82	44	49	1	8	18	9	13
Unknown	186	7	0	1	0	0	0	0	1
Total	2,515	1,883	1,347	1,675	22	167	442	414	630

Notes: BAC measured in grams (g) per deciliter (dL).

BAC may not be reported if drivers are not tested or if the results are not available immediately (as in the case of a blood test).

A driver may be coded by the officer as drinking even though no test is administered.

Alcohol-Involved Crashes

In 2016, there were 2,515 drivers in alcohol-involved crashes; 1,675 (66.6%) of those drivers were coded as had-been-drinking by the officer on the crash form.

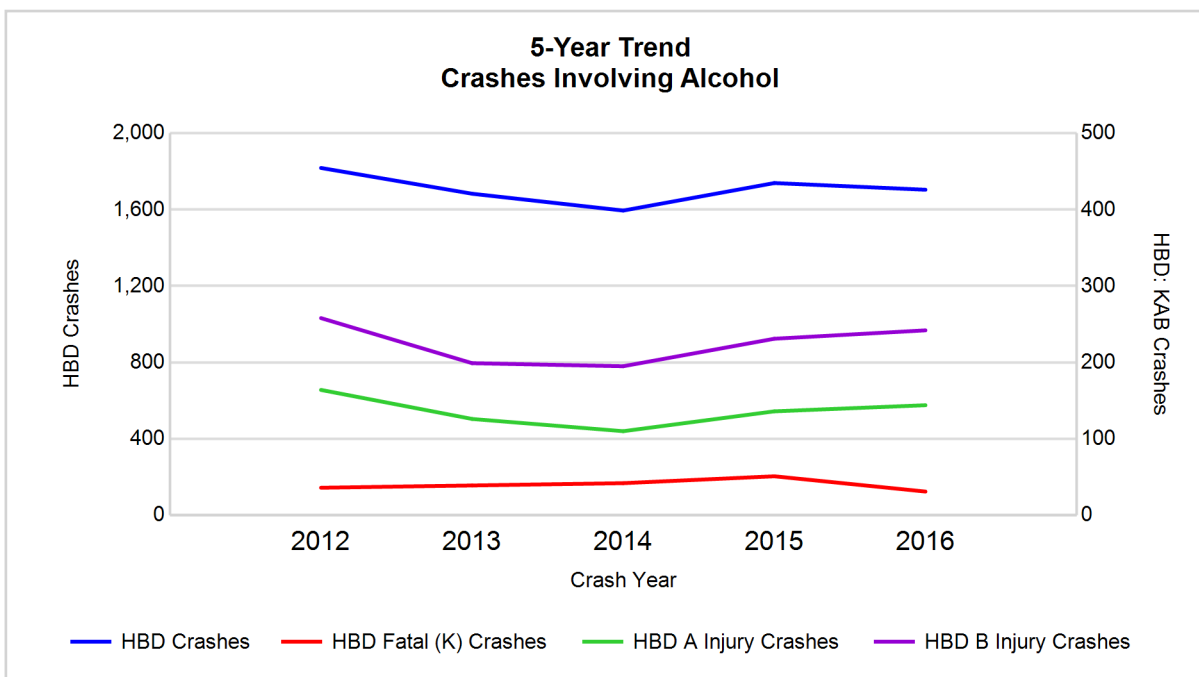
- 856 (51.1%) of the 1,675 drivers had a blood alcohol concentration (BAC) of 0.08 g/dL (grams per deciliter) or greater, and 414 (48.4%) of the 856 drivers had a BAC at or above 0.17 g/dL.
- 1,347 (80.4%) of the 1,675 drivers were coded as had-been-drinking and were tested for alcohol consumption.

5-Year Trend - Crashes Involving Alcohol

Year	All Crashes	HBD Crashes	% HBD	Fatal Crashes	HBD Fatal Crashes	% HBD	A Injury Crashes	HBD A Injury Crashes	% HBD	B Injury Crashes	HBD B Injury Crashes	% HBD
2012	44,434	1,818	4.1	138	36	26.1	802	164	20.4	2,119	258	12.2
2013	48,111	1,683	3.5	126	39	31.0	712	126	17.7	2,009	199	9.9
2014	49,305	1,595	3.2	137	42	30.7	705	110	15.6	1,987	195	9.8
2015	47,801	1,739	3.6	153	51	33.3	720	136	18.9	1,960	231	11.8
2016	52,374**	1,704	3.3	144	31*	21.5*	913**	144	15.8	2,386**	242	10.1

Note: * Indicates that the most recent year is the lowest number or percentage reported in the 5-year period in that column

** Indicates that the most recent year is the highest number or percentage reported in the 5-year period in that column



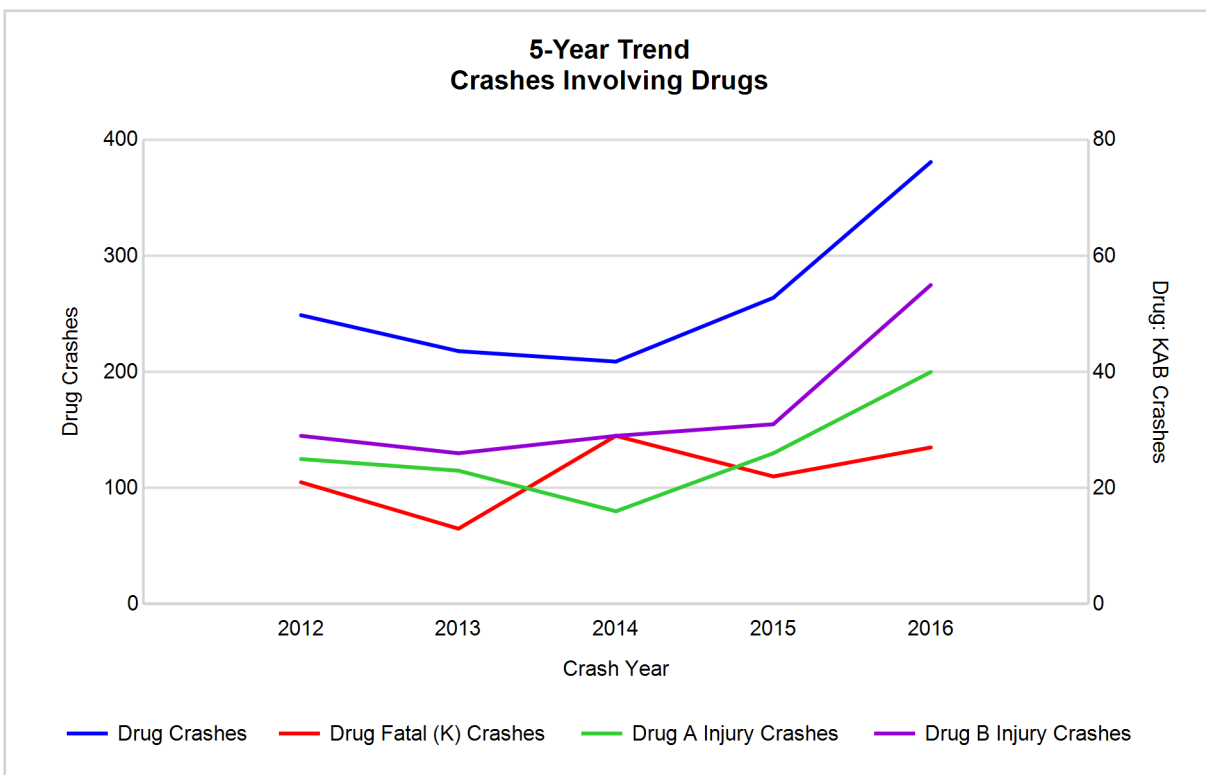
Note: Had-Been-Drinking (HBD)

5-Year Trend - Crashes Involving Drugs

Year	All Crashes	Drug Crashes	% Drug	Fatal Crashes	Drug Fatal Crashes	% Drug	A Injury Crashes	Drug A Injury Crashes	% Drug	B Injury Crashes	Drug B Injury Crashes	% Drug
2012	44,434	249	0.6	138	21	15.2	802	25	3.1	2,119	29	1.4
2013	48,111	218	0.5	126	13	10.3	712	23	3.2	2,009	26	1.3
2014	49,305	209	0.4	137	29	21.2	705	16	2.3	1,987	29	1.5
2015	47,801	264	0.6	153	22	14.4	720	26	3.6	1,960	31	1.6
2016	52,374**	381**	0.7**	144	27	18.8	913**	40**	4.4**	2,386**	55**	2.3**

Note: * Indicates that the most recent year is the lowest number or percentage reported in the 5-year period in that column

** Indicates that the most recent year is the highest number or percentage reported in the 5-year period in that column

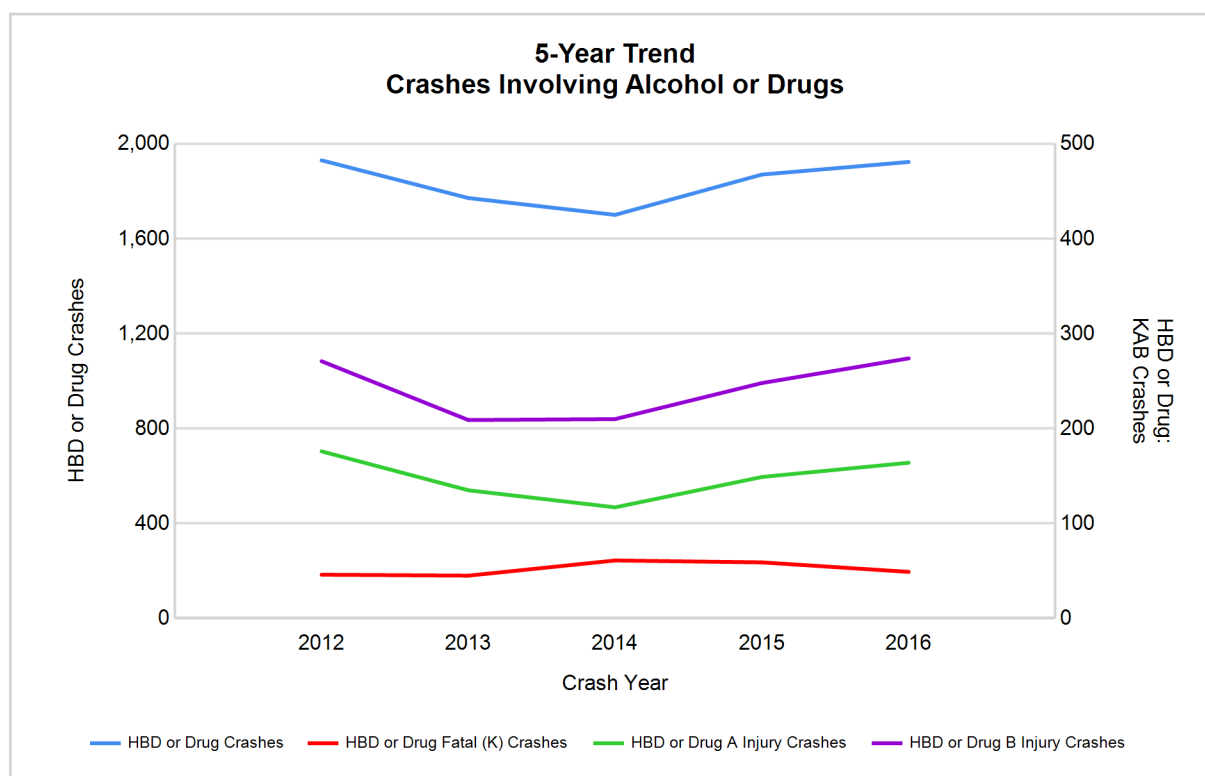


5-Year Trend - Crashes Involving Alcohol or Drugs

Year	All Crashes	HBD or Drug Crashes	% HBD or Drug	Fatal Crashes	HBD or Drug Fatal Crashes	% HBD or Drug	A Injury Crashes	HBD or Drug A Injury Crashes	% HBD or Drug	B Injury Crashes	HBD or Drug B Injury Crashes	% HBD or Drug
2012	44,434	1,931	4.3	138	46	33.3	802	176	21.9	2,119	271	12.8
2013	48,111	1,772	3.7	126	45	35.7	712	135	19.0	2,009	209	10.4
2014	49,305	1,701	3.5	137	61	44.5	705	117	16.6	1,987	210	10.6
2015	47,801	1,871	3.9	153	59	38.6	720	149	20.7	1,960	248	12.7
2016	52,374**	1,924	3.7	144	49	34.0	913**	164	18.0	2,386**	274**	11.5

Note: * Indicates that the most recent year is the lowest number or percentage reported in the 5-year period in that column

** Indicates that the most recent year is the highest number or percentage reported in the 5-year period in that column



Note: Had-Been-Drinking (HBD)

2016 - Restraints Worn Among Vehicle Drivers and Injured Passengers by Vehicle Type

Vehicle Type	Total Occupants			Fatalities			A - Suspected Serious			B - Suspected Minor			C - Possible Injury			No Injury		
	Total	Used Restraint	%	Total	Used Restraint	%	Total	Used Restraint	%	Total	Used Restraint	%	Total	Used Restraint	%	Total	Used Restraint	%
Passenger car, SUV, van	71,635	64,945	90.7	102	62	60.8	713	589	82.6	2,170	1,951	89.9	6,684	6,369	95.3	58,054	55,955	96.4
Motor home	1,228	1,121	91.3	2	2	100.0	14	7	50.0	25	22	88.0	121	115	95.0	1,013	975	96.2
Pickup truck	10,324	9,423	91.3	12	5	41.7	98	71	72.4	280	245	87.5	668	629	94.2	8,790	8,473	96.4
Small truck under 10,000 lbs. GVWR	789	704	89.2	0	0	0.0	4	3	75.0	21	17	81.0	43	37	86.0	673	647	96.1
Motorcycle	640	384	60.0	23	8	34.8	127	70	55.1	216	134	62.0	132	91	68.9	130	81	62.3
Moped / goped	93	40	43.0	0	0	0.0	16	5	31.3	39	20	51.3	23	12	52.2	12	3	25.0
Go-cart / golf cart	7	4	57.1	0	0	0.0	0	0	0.0	2	1	50.0	1	0	0.0	4	3	75.0
Snowmobile	16	14	87.5	0	0	0.0	4	4	100.0	3	2	66.7	3	3	100.0	6	5	83.3
Off-Road Vehicle - ORV / All-Terrain Vehicle - ATV	70	29	41.4	1	0	0.0	19	8	42.1	24	10	41.7	9	6	66.7	15	4	26.7
Other	424	247	58.3	2	0	0.0	11	2	18.2	9	6	66.7	31	13	41.9	324	226	69.8
Truck/bus over 10,000 lbs.	1,873	1,721	91.9	0	0	0.0	10	8	80.0	22	18	81.8	69	51	73.9	1,704	1,643	96.4
Unknown	1,707	11	0.6	0	0	0.0	0	0	0.0	0	0	0.0	1	0	0.0	35	7	20.0
Total	88,806	78,643	88.6	142	77	54.2	1,016	767	75.5	2,811	2,426	86.3	7,785	7,326	94.1	70,760	68,022	96.1

Note: Restraint Use includes shoulder belt only used, lap belt only used, both lap and shoulder belts used, child restraint used, restraint failure, and helmet worn.

2016 - Restraints Worn Among Vehicle Drivers and Injured Passengers by Age

Age Group	Total Occupants			Fatalities			A - Suspected Serious			B - Suspected Minor			C - Possible Injury			No Injury		
	Total	Used Restraint	%	Total	Used Restraint	%	Total	Used Restraint	%	Total	Used Restraint	%	Total	Used Restraint	%	Total	Used Restraint	%
0 - 15	952	851	89.4	4	3	75.0	52	39	75.0	196	164	83.7	587	547	93.2	111	98	88.3
16 - 20	11,166	10,715	96.0	15	6	40.0	136	110	80.9	461	400	86.8	1,124	1,046	93.1	9,408	9,152	97.3
21 - 24	9,775	9,242	94.5	16	9	56.3	107	82	76.6	363	309	85.1	863	807	93.5	8,390	8,035	95.8
25 - 64	52,459	50,002	95.3	75	40	53.3	603	442	73.3	1,501	1,279	85.2	4,444	4,186	94.2	45,659	44,048	96.5
65 +	8,027	7,750	96.5	32	19	59.4	118	94	79.7	289	274	94.8	763	739	96.9	6,792	6,621	97.5
Unknown	6,427	83	1.3	0	0	0.0	0	0	0.0	1	0	0.0	4	1	25.0	400	68	17.0
Total	88,806	78,643	88.6	142	77	54.2	1,016	767	75.5	2,811	2,426	86.3	7,785	7,326	94.1	70,760	68,022	96.1

Note: Restraint Use includes shoulder belt only used, lap belt only used, both lap and shoulder belts used, child restraint used, restraint failure, and helmet worn.

5-Year Trend - Restraint Use Among Drivers

Restraint Use	2012			2013			2014			2015			2016		
	Drivers	Fatal Drivers	Injured Drivers	Drivers	Fatal Drivers	Injured Drivers	Drivers	Fatal Drivers	Injured Drivers	Drivers	Fatal Drivers	Injured Drivers	Drivers	Fatal Drivers	Injured Drivers
No belts available	361	0	65	437	0	56	354	2	44	327	1	29	221	4	22
Shoulder belt only used	32	1	7	80	0	10	131	0	14	190	0	20	335	0	34
Lap belt only used	185	0	25	346	0	34	551	1	60	503	3	40	414	0	46
Both lap & shoulder belts used	61,500	42	6,243	66,947	39	6,431	70,039	39	6,501	68,155	46	6,401	74,754	46	7,474
No belts used	459	26	186	515	14	172	610	28	180	618	22	175	596	20	205
Child restraint used	5	0	0	2	0	0	4	0	0	0	0	0	5	0	1
Child restraint not used, unavailable or improper use	6	0	0	0	0	0	8	0	1	2	0	0	1	0	0
Restraint failure	20	0	5	21	0	2	66	0	9	55	1	4	53	0	8
Restraint use unknown	2,323	9	185	2,475	5	181	2,828	8	175	2,370	8	159	6,547	9	250
Helmet worn	573	11	438	493	10	360	491	8	351	457	8	323	435	8	332
Helmet not worn	232	14	168	237	18	163	212	11	160	219	11	157	278	14	202
Helmet use unknown	27	1	15	31	0	14	45	2	20	28	0	18	37	0	22
Uncoded & errors	4,596	0	7	5,004	0	6	5,585	0	4	5,463	0	8	2,075	0	2
Total	70,319	104	7,344	76,588	86	7,429	80,924	99	7,519	78,387	100	7,334	85,751	101	8,598

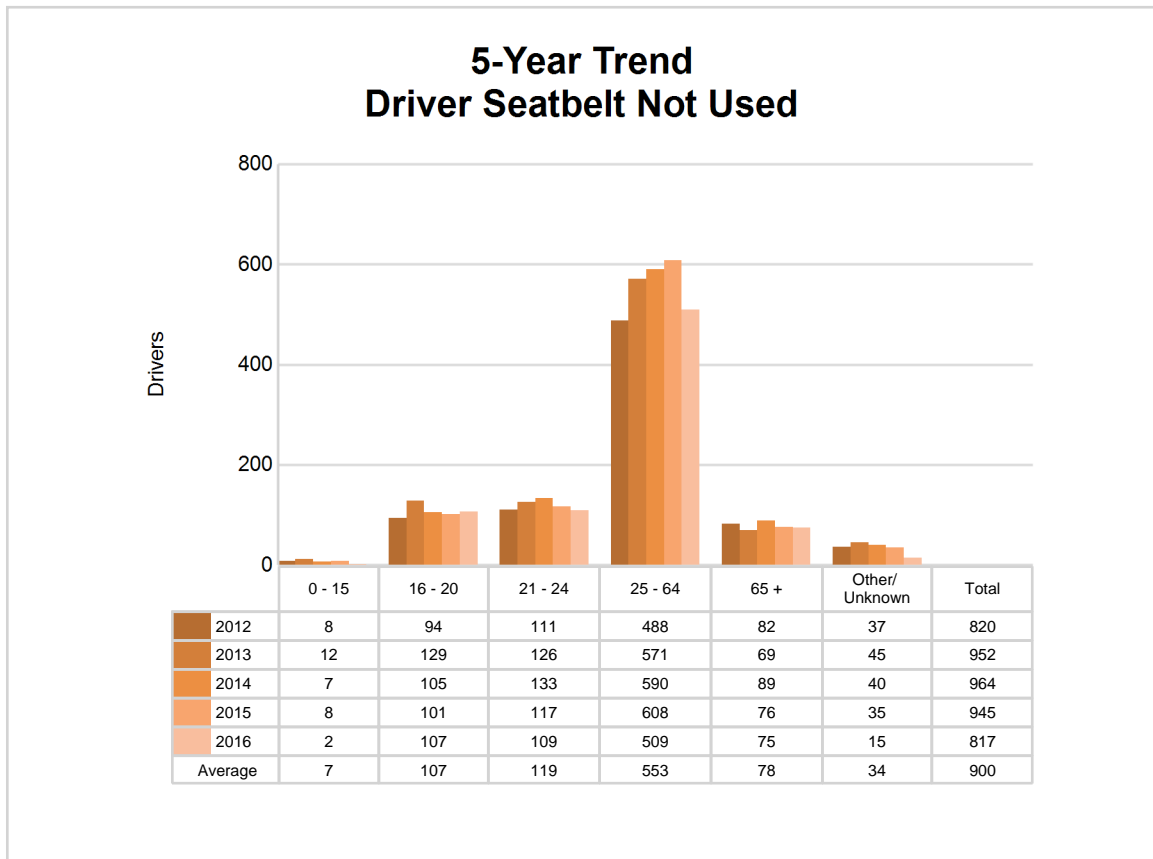
5-Year Trend - Restraint Use Among Drivers Coded Drinking

Restraint Use	2012			2013			2014			2015			2016		
	Drivers	Fatal Drivers	Injured Drivers	Drivers	Fatal Drivers	Injured Drivers	Drivers	Fatal Drivers	Injured Drivers	Drivers	Fatal Drivers	Injured Drivers	Drivers	Fatal Drivers	Injured Drivers
No belts available	14	0	6	14	0	5	16	0	4	10	1	1	8	1	3
Shoulder belt only used	1	0	0	4	0	3	3	0	0	6	0	0	7	0	0
Lap belt only used	4	0	3	6	0	1	10	0	2	14	2	1	9	0	3
Both lap & shoulder belts used	1,228	5	281	1,221	10	290	1,125	5	249	1,276	8	316	1,190	2	286
No belts used	123	8	81	81	5	50	87	9	50	99	10	53	103	6	64
Child restraint used	0	0	0	0	0	0	0	0	0	0	0	0	0	0	0
Child restraint not used, unavailable or improper use	0	0	0	0	0	0	2	0	0	0	0	0	0	0	0
Restraint failure	3	0	2	4	0	1	7	0	1	8	0	0	4	0	2
Restraint use unknown	316	3	87	265	1	66	245	3	58	233	3	56	280	3	74
Helmet worn	39	2	35	20	1	17	17	2	13	19	2	15	20	0	19
Helmet not worn	32	5	23	41	10	27	37	4	29	31	5	23	53	9	40
Helmet use unknown	4	1	3	1	0	1	6	2	3	2	0	2	1	0	1
Uncoded & errors	15	0	1	6	0	0	7	0	0	10	0	0	0	0	0
Total	1,779	24	522	1,663	27	461	1,562	25	409	1,708	31	467	1,675	21	492

5-Year Trend - Seatbelt Not Used Among Drivers by Age

Age Group	2012			2013			2014			2015			2016		
	Drivers	Fatal Drivers	Injured Drivers	Drivers	Fatal Drivers	Injured Drivers	Drivers	Fatal Drivers	Injured Drivers	Drivers	Fatal Drivers	Injured Drivers	Drivers	Fatal Drivers	Injured Drivers
0 - 15	8	0	3	12	0	2	7	1	0	8	0	3	2	0	0
16 - 20	94	0	34	129	2	33	105	3	33	101	1	22	107	3	32
21 - 24	111	4	44	126	0	41	133	3	38	117	3	30	109	3	29
25 - 64	488	14	151	571	9	131	590	18	130	608	16	131	509	11	142
65 +	82	8	18	69	3	19	89	5	23	76	3	17	75	7	24
Unknown	37	0	1	45	0	2	40	0	0	35	0	1	15	0	0
Total	820	26	251	952	14	228	964	30	224	945	23	204	817	24	227

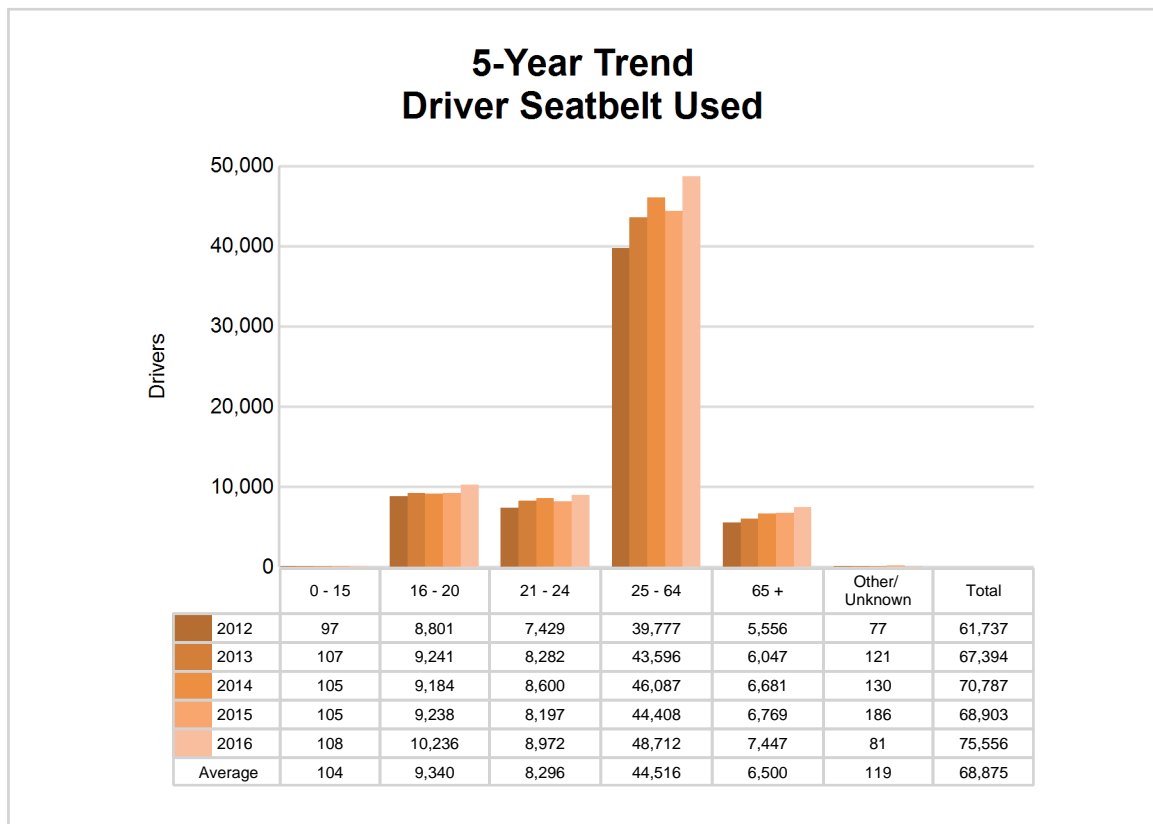
Note: Seatbelt Not Used includes no belts available or no belts used.



5-Year Trend - Seatbelt Used Among Drivers by Age

Age Group	2012			2013			2014			2015			2016		
	Drivers	Fatal Drivers	Injured Drivers	Drivers	Fatal Drivers	Injured Drivers	Drivers	Fatal Drivers	Injured Drivers	Drivers	Fatal Drivers	Injured Drivers	Drivers	Fatal Drivers	Injured Drivers
0 - 15	97	0	11	107	0	16	105	0	6	105	0	11	108	0	12
16 - 20	8,801	7	898	9,241	6	897	9,184	4	860	9,238	7	931	10,236	3	1,088
21 - 24	7,429	3	794	8,282	4	801	8,600	3	769	8,197	5	717	8,972	6	942
25 - 64	39,777	24	3,920	43,596	13	4,090	46,087	16	4,167	44,408	24	4,106	48,712	25	4,699
65 +	5,556	9	656	6,047	16	673	6,681	17	779	6,769	14	700	7,447	12	820
Unknown	77	0	1	121	0	0	130	0	3	186	0	0	81	0	1
Total	61,737	43	6,280	67,394	39	6,477	70,787	40	6,584	68,903	50	6,465	75,556	46	7,562

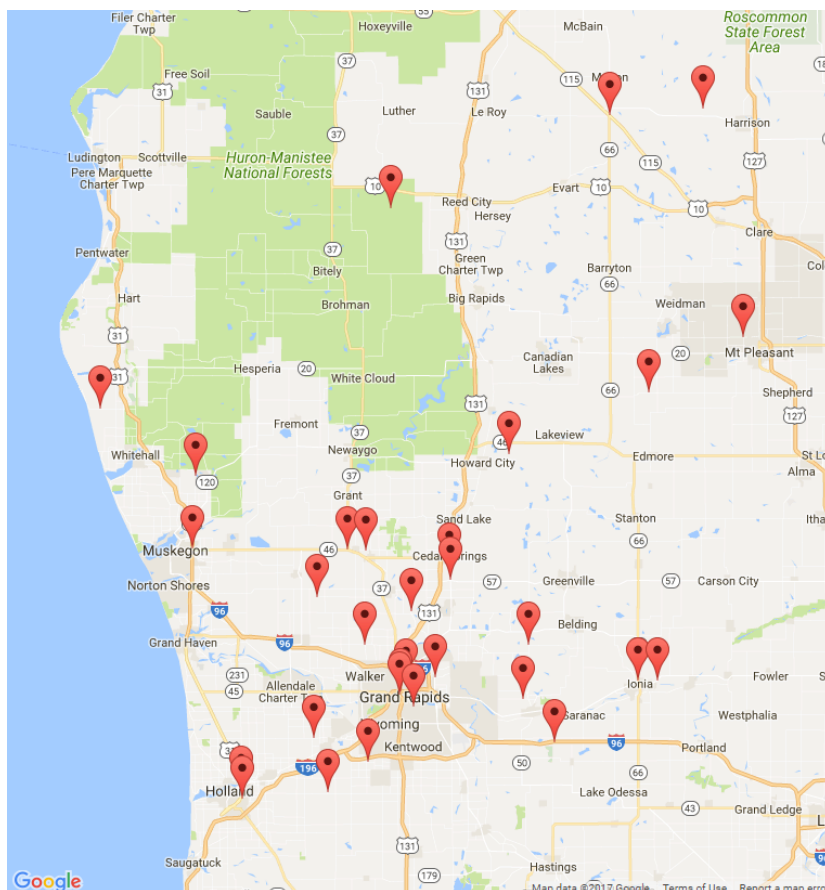
Note: Seatbelt Used includes shoulder belt only used, lap belt only used, both lap and shoulder belts used, and restraint failure.



5-Year Trend - Drivers in Crashes by Hazardous Action

Hazardous Action	2012		2013		2014		2015		2016	
	Total Drivers in Crashes	Drivers in Fatal Crashes	Total Drivers in Crashes	Drivers in Fatal Crashes	Total Drivers in Crashes	Drivers in Fatal Crashes	Total Drivers in Crashes	Drivers in Fatal Crashes	Total Drivers in Crashes	Drivers in Fatal Crashes
None	38,129	80	40,618	110	43,078	104	42,619	105	46,146	119
Speed too fast	5,596	38	7,957	24	7,800	24	5,542	27	6,553	23
Speed too slow	65	0	87	0	114	0	110	1	91	0
Failed to yield	5,988	11	6,292	18	7,214	17	6,983	18	7,629	23
Disregard traffic control	1,485	14	1,545	15	1,586	12	1,707	11	1,766	26
Drove wrong way	43	0	55	0	66	6	75	1	66	1
Drove left of center	311	8	373	7	374	16	354	12	370	4
Improper passing	349	3	326	3	447	0	372	5	439	2
Improper lane use	1,246	1	1,233	0	1,357	3	1,570	1	1,782	5
Improper turn	608	1	626	0	773	1	733	0	766	1
Improper/no signal	112	0	174	0	176	0	170	1	104	0
Improper backing	1,118	0	1,279	0	1,316	0	1,302	0	1,370	0
Unable to stop in assured clear distance	8,759	6	9,300	6	9,706	3	9,811	6	10,915	5
Other	2,432	14	2,637	10	2,717	13	2,544	6	2,668	10
Unknown	1,871	22	1,940	15	2,043	17	2,123	23	2,706	13
Reckless driving	283	3	301	2	349	4	393	3	385	7
Careless/negligent driving	1,643	4	1,691	11	1,749	6	1,963	12	1,950	4
Uncoded & errors	281	0	154	0	59	0	16	0	45	0
Total	70,319	205	76,588	221	80,924	226	78,387	232	85,751	243

MSP District 6 - West (continued)



The picture above represents all 2016 alcohol-involved fatal crashes in District 6.

In 2016, there were 1,704 alcohol-involved crashes in District 6:

31	K - Fatal Crashes
144	A - Suspected Serious Injury Crashes
242	B - Suspected Minor Injury Crashes
266	C - Possible Injury Crashes
1,021	O - Property Damage Only/No Injury Crashes

Office of Highway Safety Planning

Physical Address:
7150 Harris Drive
Dimondale, Michigan 48821

Mailing Address:
P.O. Box 30634
Lansing, Michigan 48909

Phone: (517) 284-3112
Fax: (517) 284-3151

Find us on the web:
MichiganTrafficCrashFacts.org

