



2016

**MTCF**  
Michigan Traffic  
Crash Facts

# Michigan Traffic Crash Facts

## Reporting Criteria

Please pay particular attention to the wording when interpreting the three levels of data gathered for this report.

### Crash

The Crash Level analyzes data related to crash events and returns one result per crash.

Examples: Time, weather, and location.

### Units

The Units Level analyzes the experience of the units in the crash and returns one result per vehicle, driver, pedestrian, bicyclist, or train.

Examples: Vehicle type, driver condition, and unit events.

### People

The People Level analyzes the experience of the people involved in the crash and returns one result per occupant/person/party.

Examples: Age, injury severity, and seat belt or helmet use.

### **KABCO Injury Indicator:**

K = Killed

A = Suspected Serious Injury

B = Suspected Minor Injury

C = Possible Injury

O = No Injury

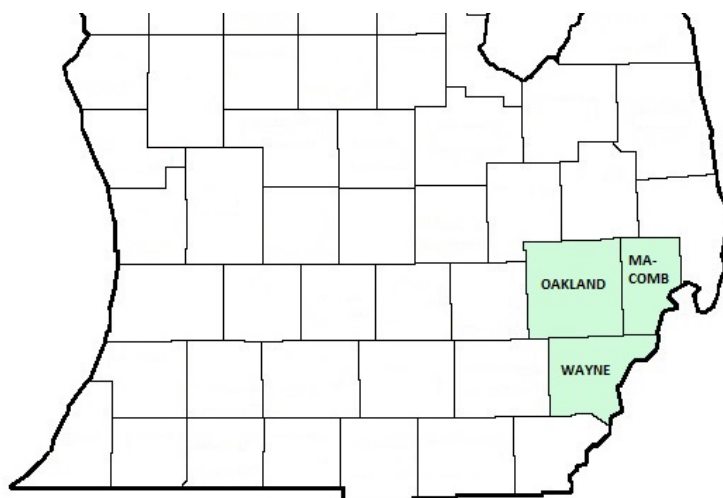
Property Damage Only (PDO)



## Michigan State Police (MSP) District 2 - Metro

### 2016 Traffic Crash Data & 2012-2016 5-Year Trends

Beginning in 2011, District 2 is comprised of Macomb, Oakland, and Wayne counties. Trend tables for this report are based on those counties.



### Sources:

The crashes in this report occurred on public roadways in Michigan and resulted in injuries, fatalities, or property damage (with \$1,000 as a reporting threshold). The information was gathered from Michigan Traffic Crash Report Forms (UD-10) submitted by local police departments, sheriff's offices, and the Michigan State Police. Other related information was obtained from the departments of Transportation, State, and Community Health.

This page left intentionally blank

## MSP District 2 - Metro

- There were 121,235 crashes in District 2 during 2016. [Page 1]
- There were 343 fatalities in 321 fatal crashes in 2016 in District 1. [Page 1]
- A total of 35,266 injuries resulted from 25,530 injury crashes. [Page 1]
- There were 95,384 property damage only crashes (no fatalities or injuries). [Page 1]
- December had the highest number of crashes (11,969). [Pages 1-2]
- August had the highest number of fatal crashes (39) and fatalities (40). [Pages 1-2]
- September had the highest number of injury crashes (2,370) and injuries (3,269). [Page 1]
- December had the highest number of property damage only crashes (9,813). [Page 1]
- Of all vehicles involved in fatal crashes, 50 (9.5%) were motorcycles. [Page 1]
- Friday was the day of the week with the highest number of crashes (20,093) and Saturday had the highest number of fatal crashes (62). [Pages 2-3]
- The 3:00 PM – 5:59 PM time period had the highest number of crashes (32,481). This is true for each year from 2012 to 2016. The 9:00 PM – 11:59 PM time period had the highest number of fatal crashes (65). [Pages 5-6]
- During the period from 2012 to 2016, the highest number of deer crashes occurred in 2015 (2,903). The 6:00 PM – 8:59 PM time period consistently had the highest number of deer-involved crashes during the five-year period. There were no fatal crashes involving deer in 2016. [Pages 7-8]
- Wayne County (43.9%) had the highest number of crashes in District 2 in 2016, followed by Oakland County (35.2%), and Macomb County (21.0%). [Page 8]
- Wayne County (58.3%) had the highest number of fatalities in District 2 in 2016, followed by Oakland County (23.3%), and Macomb County (18.4%). [Page 8]
- The highest number of drivers in crashes (236,215) occurred during 2016 and the highest number of drivers coded drinking in crashes (3,239) occurred during 2012 within the five-year period. [Page 9]
- A total of 3,209 crashes involved alcohol in 2016, but 2012 had the highest number of alcohol-involved crashes, with 3,279. [Page 10]
- Alcohol-involved fatal crashes were the highest in 2016 during the five-year period from 2012 to 2016 at 97. [Page 10]
- A total of 989 crashes, 70 fatal crashes, and 98 suspected serious injury crashes involved drugs in 2016, all the highest during the five-year period. [Page 11]
- There were 196,344 drivers wearing seatbelts and 1,521 drivers not wearing seatbelts in crashes in 2016. Of the 1,521 drivers not wearing seat belts, 42 (2.8%) were killed and 490 (32.2%) were injured. [Pages 14-16]
- The most common hazardous action coded for drivers in 2016 in all crashes was unable to stop in assured clear distance (40,955), while the most common hazardous action coded for drivers in fatal crashes was speed too fast (59). [Page 17]

## District 2 Experience

In 2016:

There were 236,215 drivers involved in 121,235 motor vehicle crashes in MSP District 2. Of those crashes, 321 were classified as fatal, resulting in 343 fatalities. An additional 35,266 persons were injured.

District 2 experienced the highest number of motor vehicle crashes (11,969) in December, the highest number of fatal crashes (39) and the highest number of persons killed (40) in August.

Michigan driver statistics indicate 6.4 percent of licensed drivers in District 2 were age 16-20, and 9.9 percent of drivers in crashes were also in that age group.

## 2016 - Crashes and Injuries by Month

Month	Crashes				Persons	
	Total	Fatal	Injury	Property Damage Only (PDO)	Fatalities	Injuries
January	9,778	17	1,875	7,886	20	2,529
February	9,649	23	1,802	7,824	25	2,437
March	9,783	13	1,978	7,792	15	2,816
April	9,287	32	1,967	7,288	37	2,783
May	9,973	24	2,254	7,695	27	3,137
June	10,002	30	2,313	7,659	32	3,196
July	9,549	23	2,209	7,317	23	3,069
August	9,841	39	2,274	7,528	40	3,156
September	10,447	34	2,370	8,043	36	3,269
October	10,675	29	2,313	8,333	31	3,171
November	10,282	34	2,042	8,206	34	2,806
December	11,969	23	2,133	9,813	23	2,897
<b>Total</b>	<b>121,235</b>	<b>321</b>	<b>25,530</b>	<b>95,384</b>	<b>343</b>	<b>35,266</b>

## 2016 - Driver Statistics

Age Group	Statewide			Driver Rates	
	2016 Population	Licensed Drivers	Drivers in Crashes	Per 10k Population	Per 10k Licensed
0 - 15	767,342	17,429	295	3.8	169.3
16 - 20	236,289	175,508	23,292	985.7	1,327.1
21 - 24	203,003	181,148	22,158	1,091.5	1,223.2
25 - 64	2,063,378	1,866,915	141,485	685.7	757.9
65 +	591,054	502,402	20,781	351.6	413.6
Unknown	0	0	28,204	--	--
<b>Total</b>	<b>3,861,066</b>	<b>2,743,402</b>	<b>236,215</b>	<b>611.8</b>	<b>861.0</b>

## 2016 - Vehicles in Crashes

Vehicle Type	Motor Vehicles		Fatal Crashes		Injury Crashes	PDO Crashes
	Number of Vehicles	% of Total	Number	% of Total	Number	Number
Passenger car, SUV, van	198,759	84.1	381	72.6	43,619	154,759
Motor home	4,380	1.9	9	1.7	988	3,383
Pickup truck	18,184	7.7	41	7.8	3,552	14,591
Small truck under 10,000 lbs. GVWR	1,843	0.8	1	0.2	352	1,490
Motorcycle	1,079	0.5	50	9.5	747	282
Moped / goped	90	0.0	5	1.0	68	17
Go-cart / golf cart	17	0.0	0	0.0	6	11
Snowmobile	4	0.0	0	0.0	3	1
Off-Road Vehicle - ORV / All-Terrain Vehicle - ATV	29	0.0	1	0.2	19	9
Other	1,000	0.4	3	0.6	148	849
Truck/bus over 10,000 lbs.	5,128	2.2	24	4.6	894	4,210
Unknown	5,702	2.4	10	1.9	645	5,047
<b>Total</b>	<b>236,215</b>	<b>100.0</b>	<b>525</b>	<b>100.0</b>	<b>51,041</b>	<b>184,649</b>

## MSP District 2 - Metro (continued)

### 5-Year Trend - Crashes by Month

Month	2012		2013		2014		2015		2016	
	Total Crashes	Fatal Crashes	Total Crashes	Fatal Crashes	Total Crashes	Fatal Crashes	Total Crashes	Fatal Crashes	Total Crashes	Fatal Crashes
January	9,101	21	9,061	20	13,865	15	11,314	19	9,778	17
February	7,584	21	8,599	14	9,658	19	10,234	12	9,649	23
March	7,475	28	7,808	17	9,279	12	8,739	18	9,783	13
April	7,324	17	7,606	16	7,127	21	7,918	23	9,287	32
May	8,712	17	9,090	21	8,957	19	9,558	20	9,973	24
June	8,538	28	8,666	23	8,987	27	9,451	36	10,002	30
July	8,225	22	8,281	35	7,781	24	8,960	33	9,549	23
August	8,134	23	8,186	20	8,677	23	8,943	36	9,841	39
September	7,784	17	8,613	31	9,234	26	9,755	22	10,447	34
October	9,641	26	9,825	18	10,155	29	10,015	17	10,675	29
November	8,339	19	9,210	22	10,740	19	10,407	33	10,282	34
December	10,064	11	10,406	17	8,393	24	9,869	24	11,969	23
<b>Total</b>	<b>100,921</b>	<b>250</b>	<b>105,351</b>	<b>254</b>	<b>112,853</b>	<b>258</b>	<b>115,163</b>	<b>293</b>	<b>121,235</b>	<b>321</b>

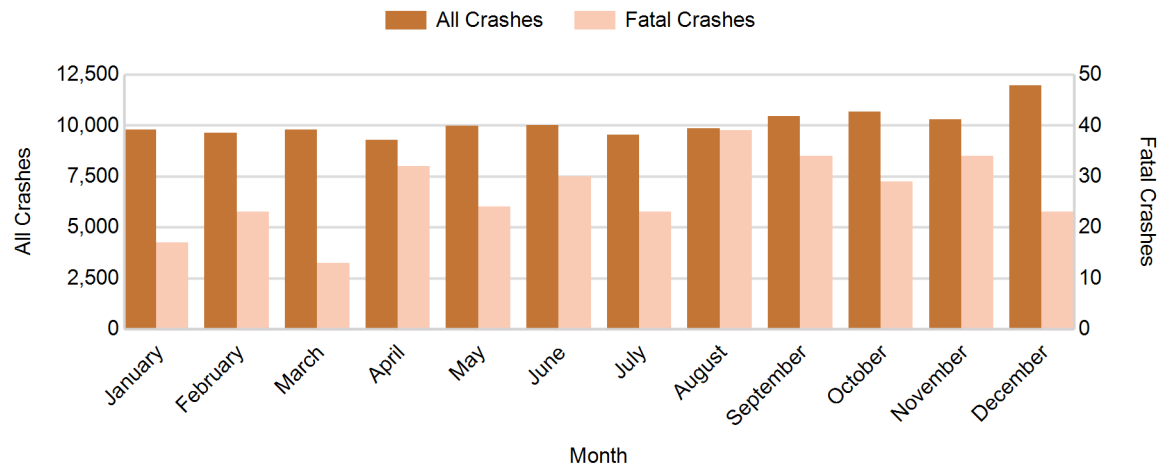
Note: † Indicates that the highest number of total crashes reported in the 5-year period occurred in the same month

### 5-Year Trend - Crashes by Day of Week

Day	2012		2013		2014		2015		2016	
	Total Crashes	Fatal Crashes	Total Crashes	Fatal Crashes	Total Crashes	Fatal Crashes	Total Crashes	Fatal Crashes	Total Crashes	Fatal Crashes
Monday	14,722	36	15,540	28	16,324	44	16,936	39	17,242	32
Tuesday	14,915	30	15,672	29	17,759	36	17,868	35	18,669	37
Wednesday	15,449	28	16,457	30	19,086	22	18,438	36	19,477	44
Thursday	15,708	26	16,722	38	17,905	30	17,573	36	19,612	44
Friday	17,241	46	17,124	41	18,225	36	18,687	52	20,093	47
Saturday	12,830	45	13,920	50	13,250	46	14,551	58	14,573	62
Sunday	10,056	39	9,916	38	10,304	44	11,110	37	11,569	55
<b>Total</b>	<b>100,921</b>	<b>250</b>	<b>105,351</b>	<b>254</b>	<b>112,853</b>	<b>258</b>	<b>115,163</b>	<b>293</b>	<b>121,235</b>	<b>321</b>

Note: † Indicates that the highest number of total crashes reported in the 5-year period occurred on the same day of the week

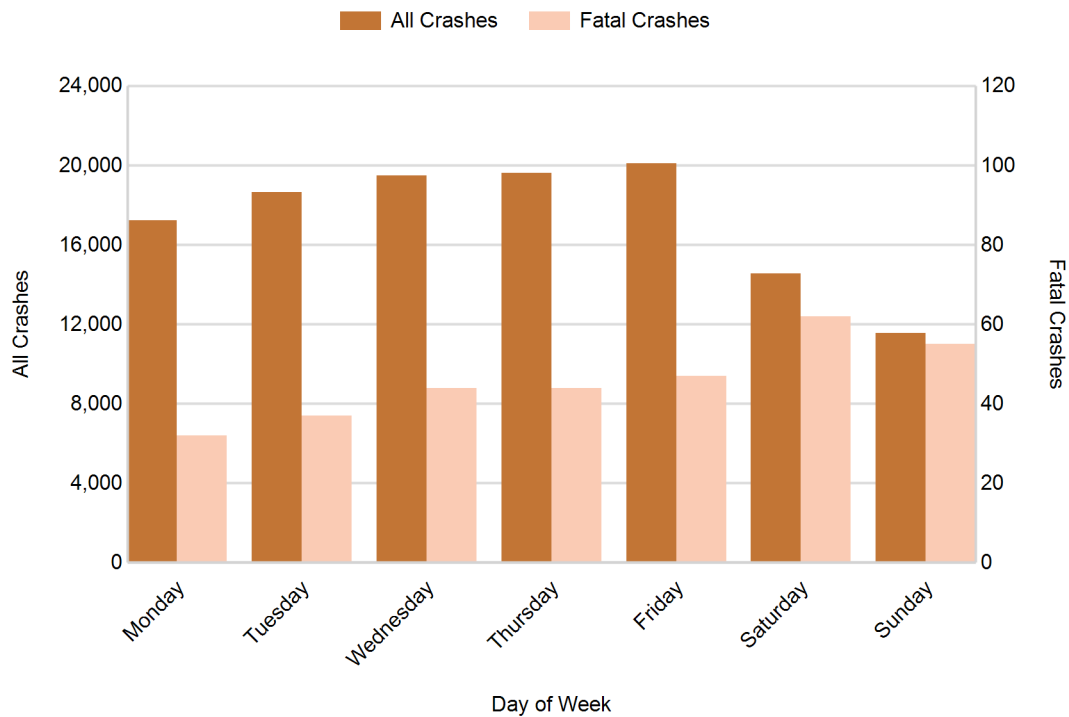
### 2016 Crashes by Month



## 2016 - Crashes by Day of Week

Day	All Crashes		Fatal Crashes		Injury Crashes			PDO Crashes
	Number	% of Total	Number	% of Fatal	A	B	C	Number
Monday	17,242	14.2	32	10.0	184	884	2,528	13,614
Tuesday	18,669	15.4	37	11.5	200	918	2,638	14,876
Wednesday	19,477	16.1	44	13.7	186	983	2,879	15,385
Thursday	19,612	16.2	44	13.7	160	980	2,867	15,561
Friday	20,093	16.6	47	14.6	200	1,049	2,891	15,906
Saturday	14,573	12.0	62	19.3	244	848	2,288	11,131
Sunday	11,569	9.5	55	17.1	186	738	1,679	8,911
<b>Total</b>	<b>121,235</b>	<b>100.0</b>	<b>321</b>	<b>100.0</b>	<b>1,360</b>	<b>6,400</b>	<b>17,770</b>	<b>95,384</b>

## 2016 Day of Week and Severity

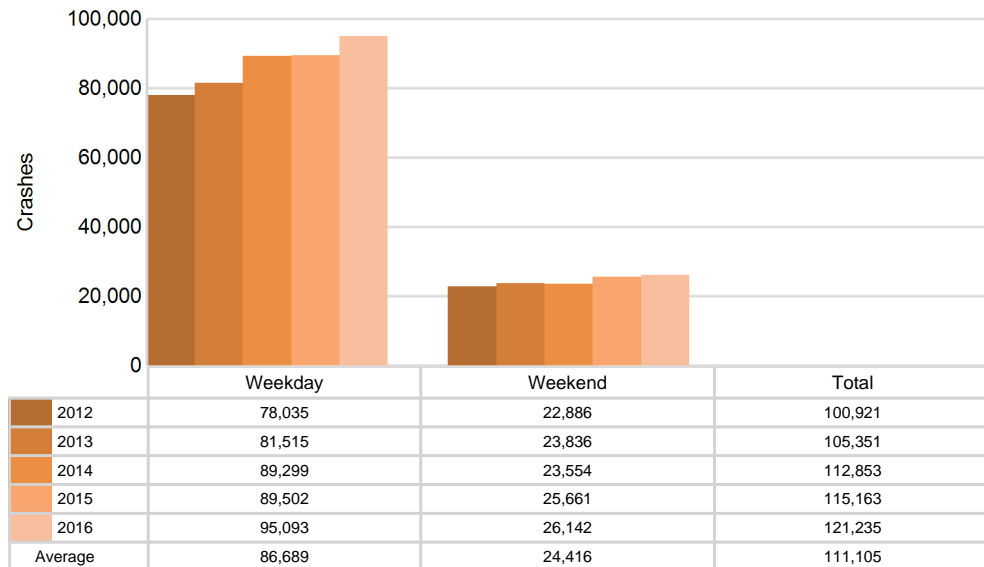


## MSP District 2 - Metro (continued)

### 5-Year Trend - Crashes by Weekday and Weekend

Portion of Week	2012		2013		2014		2015		2016	
	Total Crashes	Fatal Crashes	Total Crashes	Fatal Crashes	Total Crashes	Fatal Crashes	Total Crashes	Fatal Crashes	Total Crashes	Fatal Crashes
Weekday	78,035	166	81,515	166	89,299	168	89,502	198	95,093	204
Weekend	22,886	84	23,836	88	23,554	90	25,661	95	26,142	117
<b>Total</b>	<b>100,921</b>	<b>250</b>	<b>105,351</b>	<b>254</b>	<b>112,853</b>	<b>258</b>	<b>115,163</b>	<b>293</b>	<b>121,235</b>	<b>321</b>

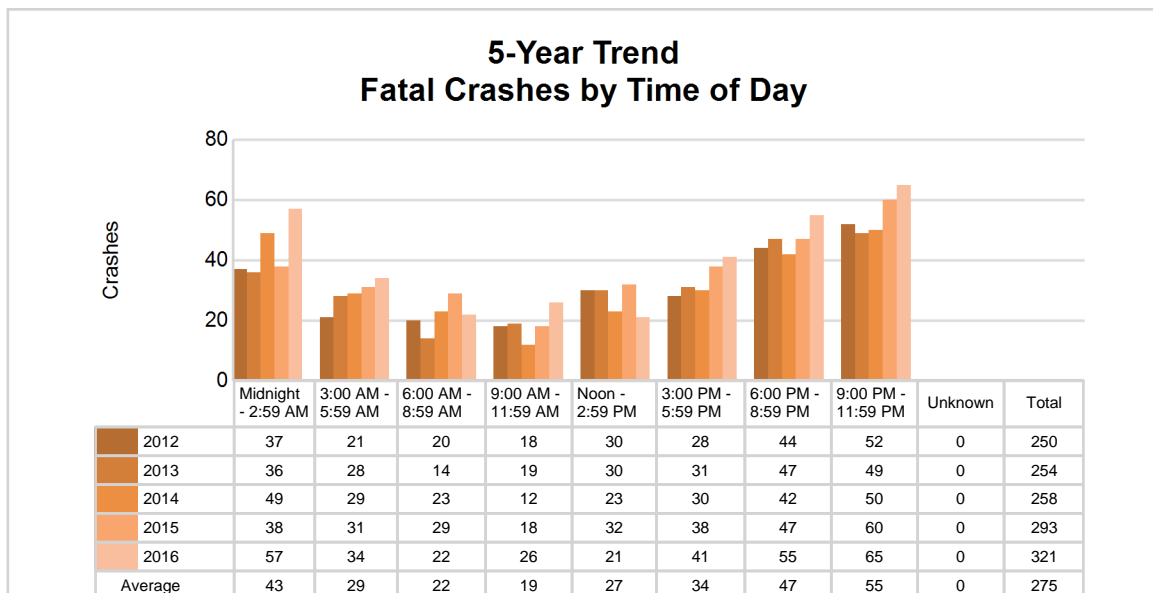
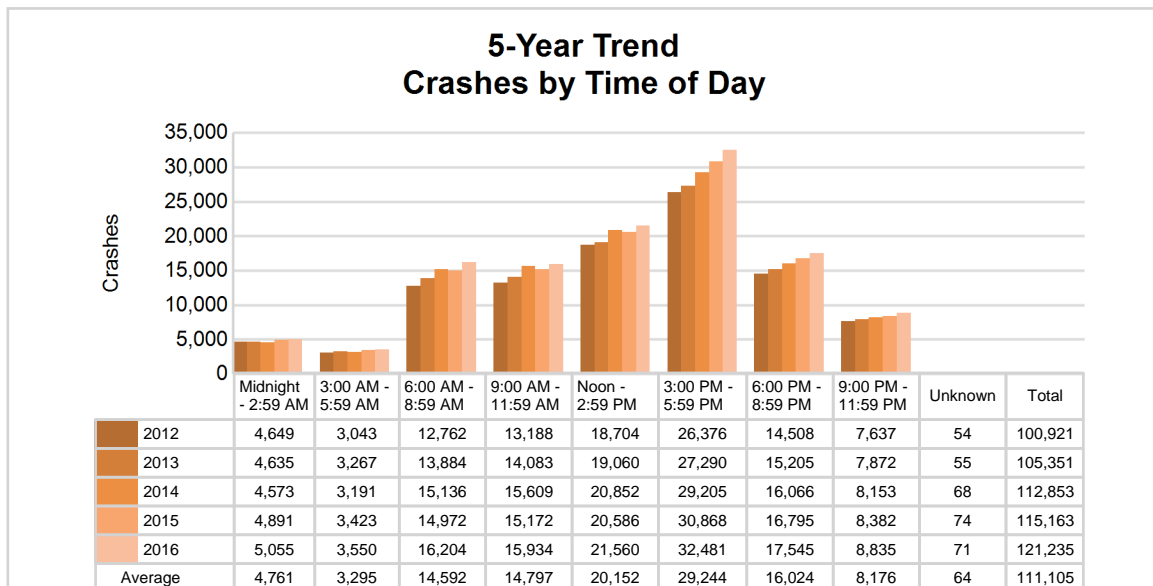
### 5-Year Crash Trends by Weekday (Monday - Friday) and Weekend (Saturday & Sunday)



## 5-Year Trend - Crashes by Time of Day

Time of Day	2012		2013		2014		2015		2016	
	Total Crashes	Fatal Crashes	Total Crashes	Fatal Crashes	Total Crashes	Fatal Crashes	Total Crashes	Fatal Crashes	Total Crashes	Fatal Crashes
Midnight - 2:59 AM	4,649	37	4,635	36	4,573	49	4,891	38	5,055	57
3:00 AM - 5:59 AM	3,043	21	3,267	28	3,191	29	3,423	31	3,550	34
6:00 AM - 8:59 AM	12,762	20	13,884	14	15,136	23	14,972	29	16,204	22
9:00 AM - 11:59 AM	13,188	18	14,083	19	15,609	12	15,172	18	15,934	26
Noon - 2:59 PM	18,704	30	19,060	30	20,852	23	20,586	32	21,560	21
3:00 PM - 5:59 PM	26,376 †	28	27,290 †	31	29,205 †	30	30,868 †	38	32,481 †	41
6:00 PM - 8:59 PM	14,508	44	15,205	47	16,066	42	16,795	47	17,545	55
9:00 PM - 11:59 PM	7,637	52	7,872	49	8,153	50	8,382	60	8,835	65
Unknown	54	0	55	0	68	0	74	0	71	0
<b>Total</b>	<b>100,921</b>	<b>250</b>	<b>105,351</b>	<b>254</b>	<b>112,853</b>	<b>258</b>	<b>115,163</b>	<b>293</b>	<b>121,235</b>	<b>321</b>

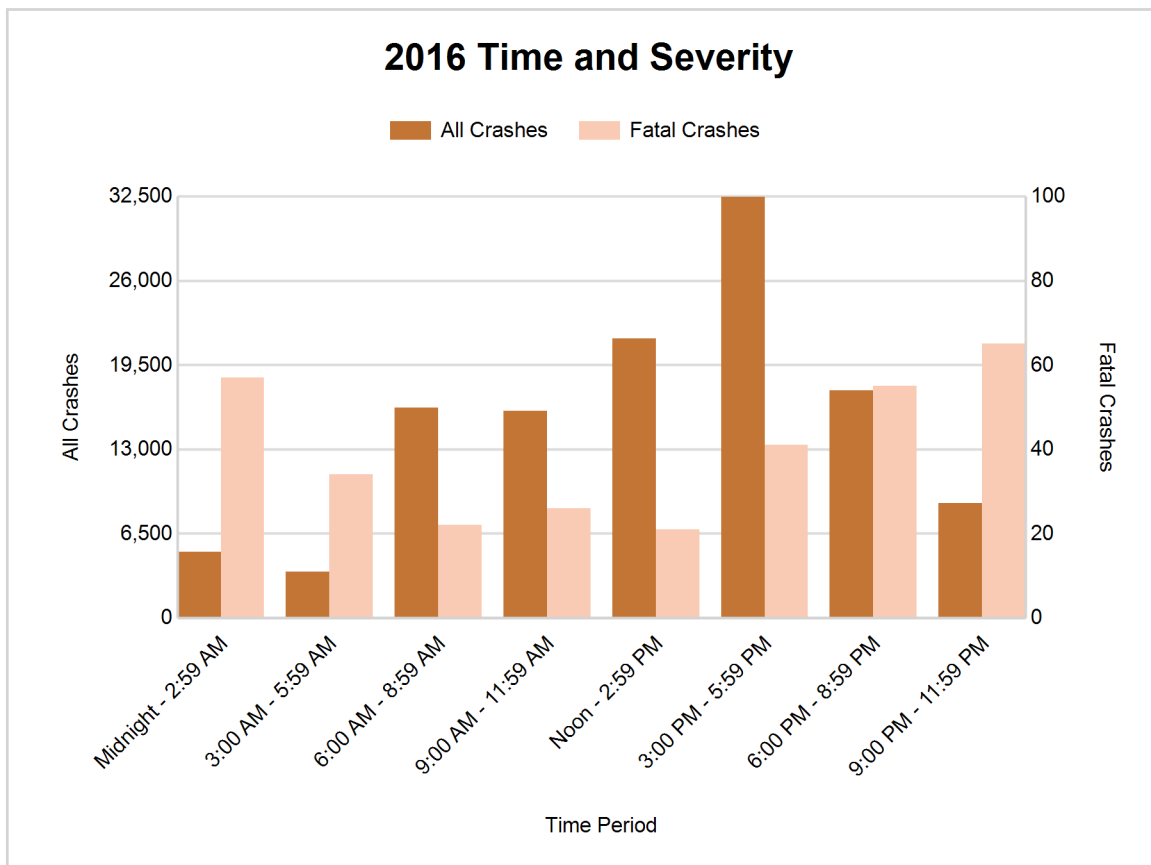
Note: † Indicates that the highest number of total crashes reported in the 5-year period occurred in the same time period



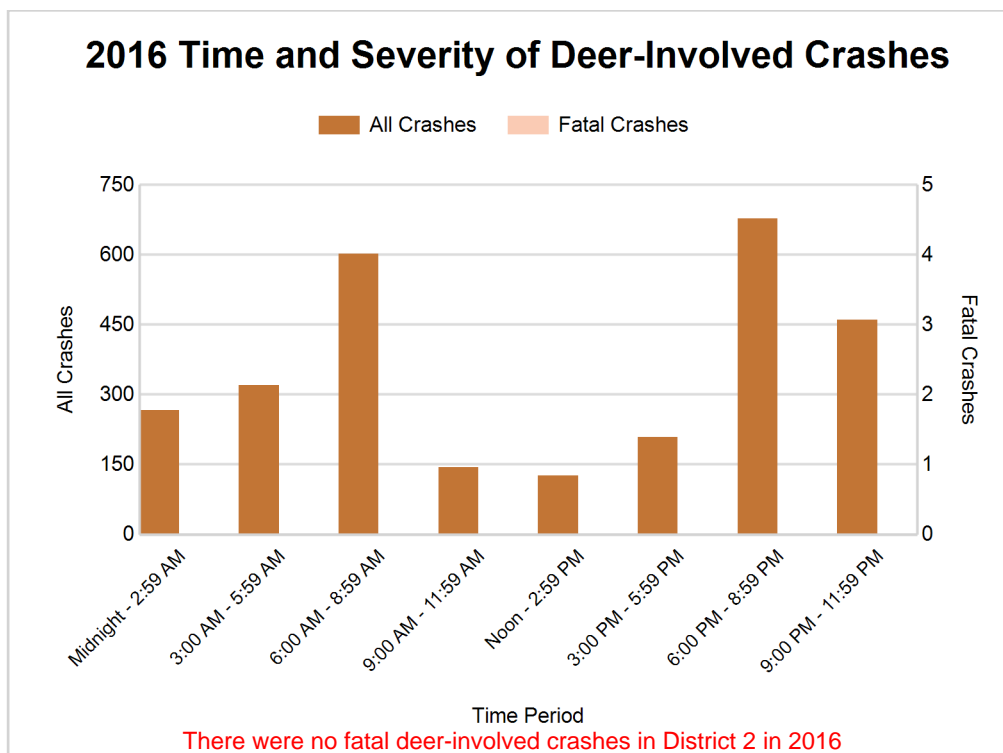


## 2016 - Time and Severity

Time of Day	All Crashes		Fatal Crashes		Injury Crashes			PDO Crashes
	Number	% of Total	Number	% of Fatal	A	B	C	Number
Midnight - 2:59 AM	5,055	4.2	57	17.8	148	424	774	3,652
3:00 AM - 5:59 AM	3,550	2.9	34	10.6	67	242	477	2,730
6:00 AM - 8:59 AM	16,204	13.4	22	6.9	124	735	2,273	13,050
9:00 AM - 11:59 AM	15,934	13.1	26	8.1	137	774	2,295	12,702
Noon - 2:59 PM	21,560	17.8	21	6.5	199	1,110	3,276	16,954
3:00 PM - 5:59 PM	32,481	26.8	41	12.8	282	1,560	4,758	25,840
6:00 PM - 8:59 PM	17,545	14.5	55	17.1	216	918	2,578	13,778
9:00 PM - 11:59 PM	8,835	7.3	65	20.2	187	637	1,338	6,608
Unknown	71	0.1	0	0.0	0	0	1	70
<b>Total</b>	<b>121,235</b>	<b>100.0</b>	<b>321</b>	<b>100.0</b>	<b>1,360</b>	<b>6,400</b>	<b>17,770</b>	<b>95,384</b>







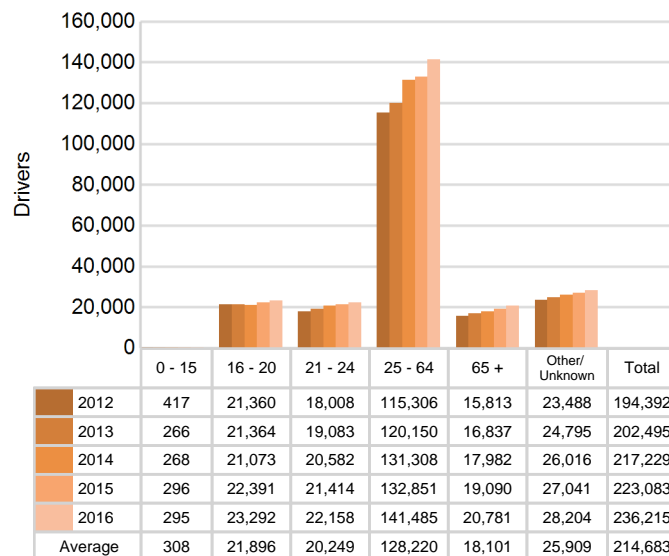
#### 2016 - Reported Motor Vehicle Crashes by County

County	Crashes											Persons	
	Total	Fatal	Injury	Property Damage	Inter-state	US Route	State Route	Local Street	Alcohol-Involved	Drug-Involved	Deer-Involved	Fatalities	Injuries
Macomb	25,411	60	5,409	19,942	2,668	0	6,858	15,870	733	272	585	63	7,404
Oakland	42,660	78	8,218	34,364	7,276	2,370	7,254	25,699	1,088	292	1,847	80	11,170
Wayne	53,164	183	11,903	41,078	8,794	3,426	9,522	31,418	1,388	425	372	200	16,692
<b>Total</b>	<b>121,235</b>	<b>321</b>	<b>25,530</b>	<b>95,384</b>	<b>18,738</b>	<b>5,796</b>	<b>23,634</b>	<b>72,987</b>	<b>3,209</b>	<b>989</b>	<b>2,804</b>	<b>343</b>	<b>35,266</b>

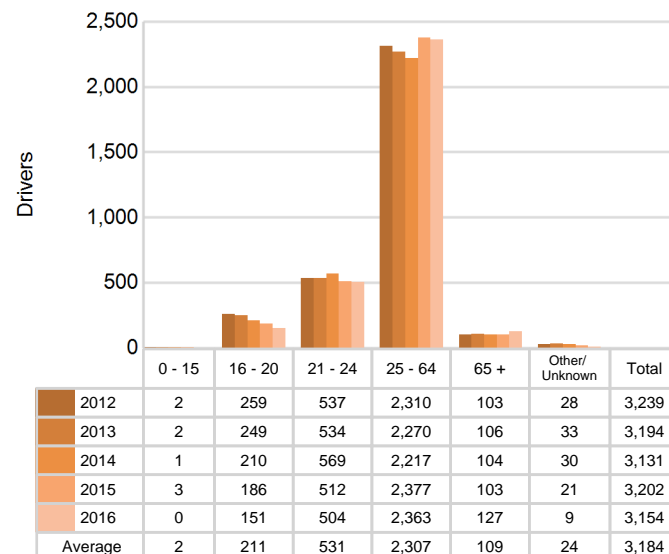
## 5-Year Trend - Drivers in Crashes Coded Drinking by Driver Age

Driver Age	2012		2013		2014		2015		2016	
	Total Drivers in Crashes	Total Drivers Coded Drinking	Total Drivers in Crashes	Total Drivers Coded Drinking	Total Drivers in Crashes	Total Drivers Coded Drinking	Total Drivers in Crashes	Total Drivers Coded Drinking	Total Drivers in Crashes	Total Drivers Coded Drinking
0 - 15	417	2	266	2	268	1	296	3	295	0
16 - 20	21,360	259	21,364	249	21,073	210	22,391	186	23,292	151
21 - 24	18,008	537	19,083	534	20,582	569	21,414	512	22,158	504
25 - 64	115,306	2,310	120,150	2,270	131,308	2,217	132,851	2,377	141,485	2,363
65 +	15,813	103	16,837	106	17,982	104	19,090	103	20,781	127
Unknown	23,488	28	24,795	33	26,016	30	27,041	21	28,204	9
<b>Total</b>	<b>194,392</b>	<b>3,239</b>	<b>202,495</b>	<b>3,194</b>	<b>217,229</b>	<b>3,131</b>	<b>223,083</b>	<b>3,202</b>	<b>236,215</b>	<b>3,154</b>

### 5-Year Trend Total Drivers in Crashes by Age



### 5-Year Trend Total Drivers Coded Drinking by Age



**2016 - Bodily Alcohol Concentration (BAC) Results Among All Vehicle Drivers in Alcohol-Involved Crashes by Age**

Age Group	Drivers				BAC Result Range for Drivers Coded Drinking				
	Total Drivers in Alcohol-Involved Crashes	Total Drivers Tested in all Crashes	Total Drivers Coded Drinking, Tested	Total Drivers Coded Drinking	BAC = 0.00	BAC 0.01 g/dL to 0.07 g/dL	BAC 0.08 g/dL to 0.16 g/dL	BAC 0.17 g/dL and Above	BAC Not Reported
0 - 15	5	2	0	0	0	0	0	0	0
16 - 20	302	185	129	151	6	19	37	35	54
21 - 24	675	524	441	504	15	44	152	134	159
25 - 64	3,628	2,407	1,989	2,363	51	128	501	799	884
65 +	272	155	109	127	2	17	36	32	40
Unknown	645	12	0	9	0	0	0	0	9
<b>Total</b>	<b>5,527</b>	<b>3,285</b>	<b>2,668</b>	<b>3,154</b>	<b>74</b>	<b>208</b>	<b>726</b>	<b>1,000</b>	<b>1,146</b>

Notes: BAC measured in grams (g) per deciliter (dL).

BAC may not be reported if drivers are not tested or if the results are not available immediately (as in the case of a blood test).

A driver may be coded by the officer as drinking even though no test is administered.

**Alcohol-Involved Crashes**

In 2016, there were 5,527 drivers in alcohol-involved crashes; 3,154 (57.1%) of those drivers were coded as had-been-drinking by the officer on the crash form.

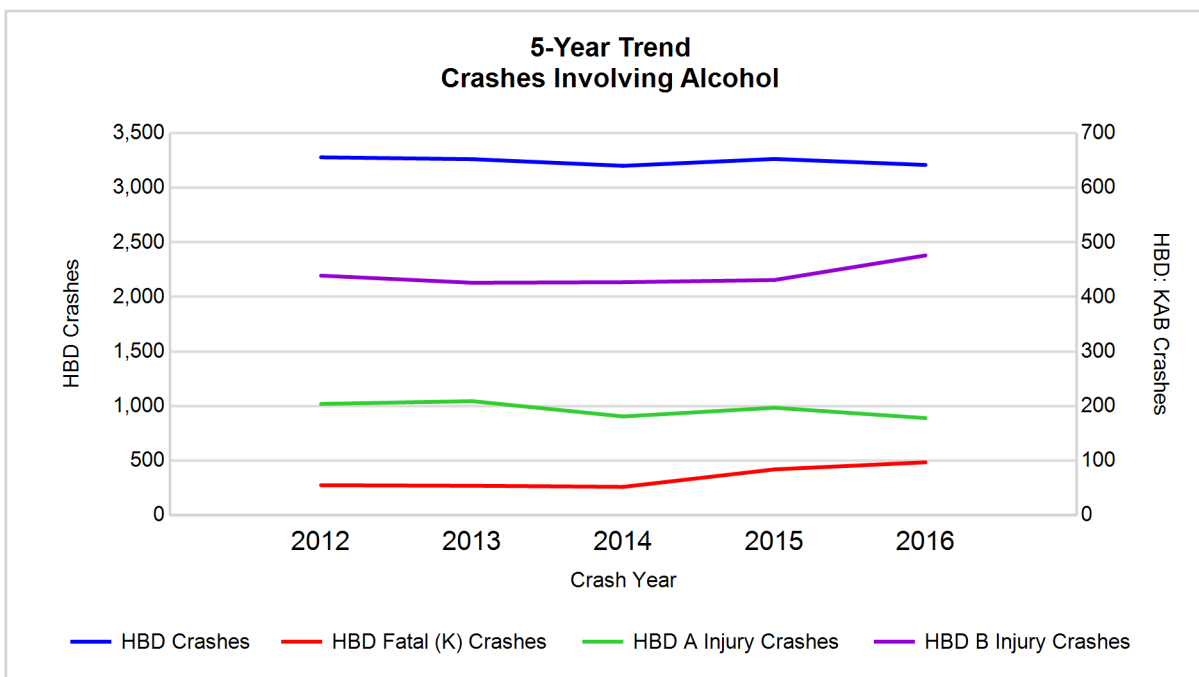
- 1,726 (54.7%) of the 3,154 drivers had a blood alcohol concentration (BAC) of 0.08 g/dL (grams per deciliter) or greater, and 1,000 (57.9%) of the 1,726 drivers had a BAC at or above 0.17 g/dL.
- 2,668 (84.6%) of the 3,154 drivers were coded as had-been-drinking and were tested for alcohol consumption.

**5-Year Trend - Crashes Involving Alcohol**

Year	All Crashes	HBD Crashes	% HBD	Fatal Crashes	HBD Fatal Crashes	% HBD	A Injury Crashes	HBD A Injury Crashes	% HBD	B Injury Crashes	HBD B Injury Crashes	% HBD
2012	100,921	3,279	3.2	250	55	22.0	1,461	204	14.0	5,201	439	8.4
2013	105,351	3,262	3.1	254	54	21.3	1,442	209	14.5	5,281	426	8.1
2014	112,853	3,201	2.8	258	52	20.2	1,367	181	13.2	5,342	427	8.0
2015	115,163	3,264	2.8	293	84	28.7	1,301	197	15.1	5,549	431	7.8
2016	121,235**	3,209	2.6*	321**	97**	30.2**	1,360	178*	13.1*	6,400**	476**	7.4*

Note: \* Indicates that the most recent year is the lowest number or percentage reported in the 5-year period in that column

\*\* Indicates that the most recent year is the highest number or percentage reported in the 5-year period in that column

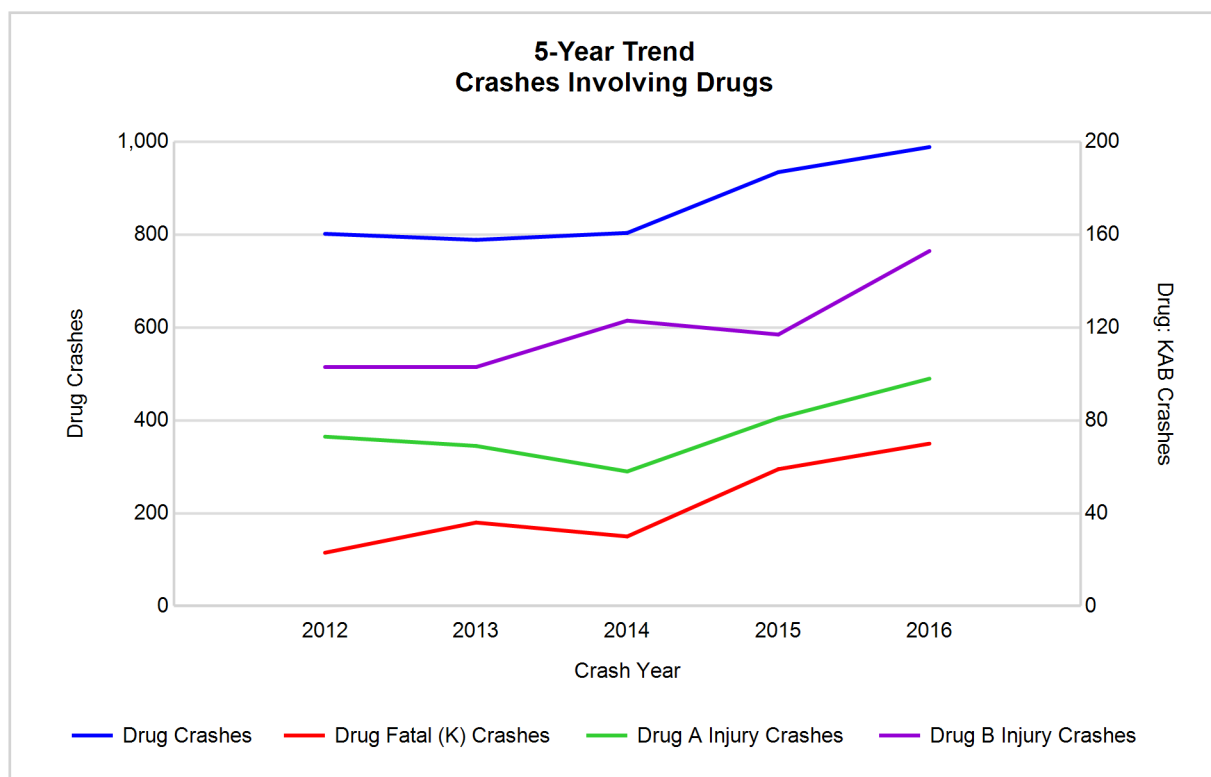


Note: Had-Been-Drinking (HBD)

## 5-Year Trend - Crashes Involving Drugs

Year	All Crashes	Drug Crashes	% Drug	Fatal Crashes	Drug Fatal Crashes	% Drug	A Injury Crashes	Drug A Injury Crashes	% Drug	B Injury Crashes	Drug B Injury Crashes	% Drug
2012	100,921	802	0.8	250	23	9.2	1,461	73	5.0	5,201	103	2.0
2013	105,351	789	0.7	254	36	14.2	1,442	69	4.8	5,281	103	2.0
2014	112,853	804	0.7	258	30	11.6	1,367	58	4.2	5,342	123	2.3
2015	115,163	935	0.8	293	59	20.1	1,301	81	6.2	5,549	117	2.1
2016	121,235**	989**	0.8	321**	70**	21.8**	1,360	98**	7.2**	6,400**	153**	2.4**

Note: \* Indicates that the most recent year is the lowest number or percentage reported in the 5-year period in that column  
 \*\* Indicates that the most recent year is the highest number or percentage reported in the 5-year period in that column

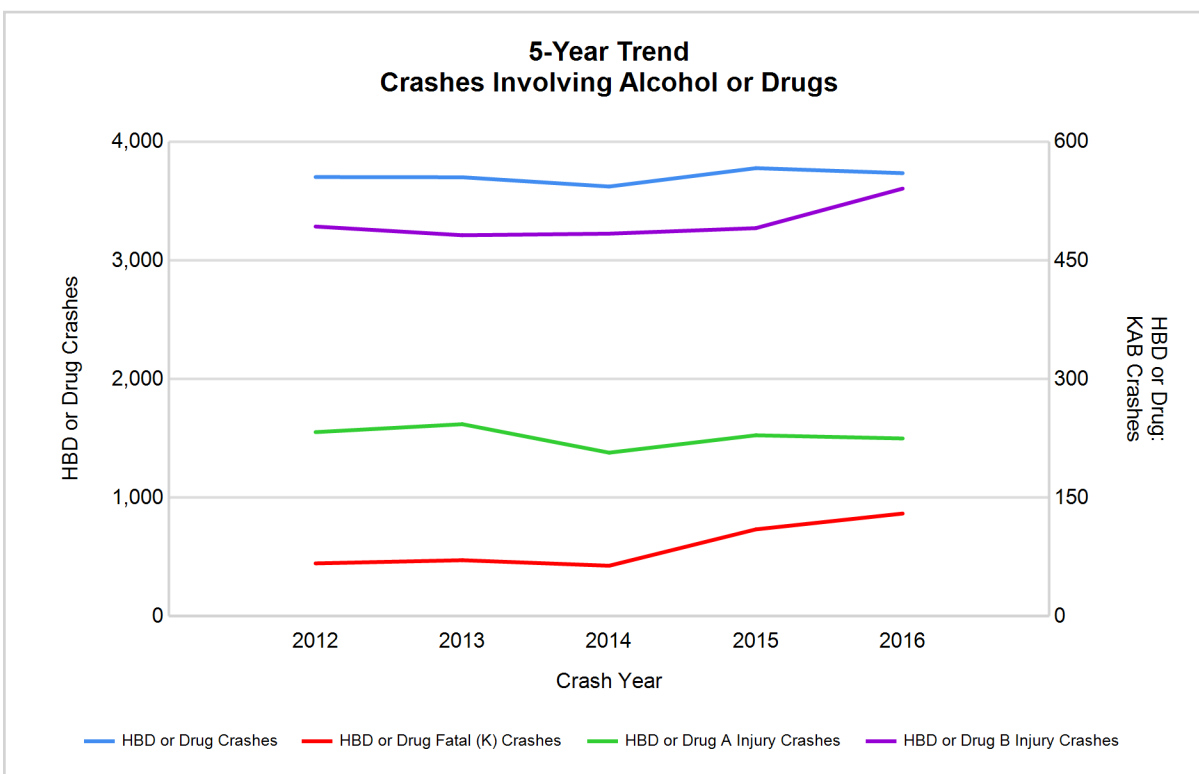


## 5-Year Trend - Crashes Involving Alcohol or Drugs

Year	All Crashes	HBD or Drug Crashes	% HBD or Drug	Fatal Crashes	HBD or Drug Fatal Crashes	% HBD or Drug	A Injury Crashes	HBD or Drug A Injury Crashes	% HBD or Drug	B Injury Crashes	HBD or Drug B Injury Crashes	% HBD or Drug
2012	100,921	3,704	3.7	250	67	26.8	1,461	233	15.9	5,201	493	9.5
2013	105,351	3,702	3.5	254	71	28.0	1,442	243	16.9	5,281	482	9.1
2014	112,853	3,624	3.2	258	64	24.8	1,367	207	15.1	5,342	484	9.1
2015	115,163	3,779	3.3	293	110	37.5	1,301	229	17.6	5,549	491	8.8
2016	121,235**	3,737	3.1*	321**	130**	40.5**	1,360	225	16.5	6,400**	541**	8.5*

Note: \* Indicates that the most recent year is the lowest number or percentage reported in the 5-year period in that column

\*\* Indicates that the most recent year is the highest number or percentage reported in the 5-year period in that column



Note: Had-Been-Drinking (HBD)

# MSP District 2 - Metro (continued)

13

## 2016 - Restraints Worn Among Vehicle Drivers and Injured Passengers by Vehicle Type

Vehicle Type	Total Occupants			Fatalities			A - Suspected Serious			B - Suspected Minor			C - Possible Injury			No Injury		
	Total	Used Restraint	%	Total	Used Restraint	%	Total	Used Restraint	%	Total	Used Restraint	%	Total	Used Restraint	%	Total	Used Restraint	%
Passenger car, SUV, van	206,288	176,720	85.7	176	71	40.3	1,200	872	72.7	6,358	5,692	89.5	22,433	20,827	92.8	156,886	149,166	95.1
Motor home	4,607	3,980	86.4	2	1	50.0	24	15	62.5	141	120	85.1	514	478	93.0	3,534	3,362	95.1
Pickup truck	18,543	15,795	85.2	12	4	33.3	67	50	74.6	400	341	85.3	1,201	1,138	94.8	14,915	14,255	95.6
Small truck under 10,000 lbs. GVWR	1,893	1,512	79.9	0	0	0.0	8	3	37.5	27	18	66.7	135	111	82.2	1,480	1,378	93.1
Motorcycle	1,133	728	64.3	44	25	56.8	161	101	62.7	347	239	68.9	263	183	69.6	267	178	66.7
Moped / goped	92	23	25.0	5	0	0.0	5	1	20.0	41	9	22.0	23	7	30.4	11	6	54.5
Go-cart / golf cart	19	6	31.6	0	0	0.0	0	0	0.0	2	0	0.0	2	1	50.0	10	5	50.0
Snowmobile	5	1	20.0	0	0	0.0	2	1	50.0	0	0	0.0	1	0	0.0	2	0	0.0
Off-Road Vehicle - ORV / All-Terrain Vehicle - ATV	32	5	15.6	1	0	0.0	4	0	0.0	10	3	30.0	5	1	20.0	4	1	25.0
Other	1,016	599	59.0	1	0	0.0	7	1	14.3	13	8	61.5	47	32	68.1	677	558	82.4
Truck/bus over 10,000 lbs.	5,298	4,602	86.9	2	2	100.0	20	6	30.0	44	32	72.7	259	124	47.9	4,679	4,436	94.8
Unknown	5,715	95	1.7	1	0	0.0	0	0	0.0	3	2	66.7	13	9	69.2	194	75	38.7
<b>Total</b>	<b>244,641</b>	<b>204,066</b>	<b>83.4</b>	<b>244</b>	<b>103</b>	<b>42.2</b>	<b>1,498</b>	<b>1,050</b>	<b>70.1</b>	<b>7,386</b>	<b>6,464</b>	<b>87.5</b>	<b>24,896</b>	<b>22,911</b>	<b>92.0</b>	<b>182,659</b>	<b>173,420</b>	<b>94.9</b>

Note: Restraint Use includes shoulder belt only used, lap belt only used, both lap and shoulder belts used, child restraint used, restraint failure, and helmet worn.

## 2016 - Restraints Worn Among Vehicle Drivers and Injured Passengers by Age

Age Group	Total Occupants			Fatalities			A - Suspected Serious			B - Suspected Minor			C - Possible Injury			No Injury		
	Total	Used Restraint	%	Total	Used Restraint	%	Total	Used Restraint	%	Total	Used Restraint	%	Total	Used Restraint	%	Total	Used Restraint	%
0 - 15	2,393	2,036	85.1	8	3	37.5	61	43	70.5	347	281	81.0	1,708	1,486	87.0	263	223	84.8
16 - 20	24,548	23,200	94.5	23	5	21.7	159	89	56.0	939	805	85.7	2,652	2,395	90.3	20,675	19,899	96.2
21 - 24	22,976	21,429	93.3	30	11	36.7	180	117	65.0	930	777	83.5	2,517	2,261	89.8	19,192	18,254	95.1
25 - 64	144,996	136,438	94.1	132	51	38.6	946	669	70.7	4,348	3,824	87.9	15,431	14,338	92.9	123,252	117,527	95.4
65 +	21,507	20,559	95.6	51	33	64.7	151	132	87.4	816	775	95.0	2,548	2,423	95.1	17,841	17,191	96.4
Unknown	28,221	404	1.4	0	0	0.0	1	0	0.0	6	2	33.3	40	8	20.0	1,436	326	22.7
<b>Total</b>	<b>244,641</b>	<b>204,066</b>	<b>83.4</b>	<b>244</b>	<b>103</b>	<b>42.2</b>	<b>1,498</b>	<b>1,050</b>	<b>70.1</b>	<b>7,386</b>	<b>6,464</b>	<b>87.5</b>	<b>24,896</b>	<b>22,911</b>	<b>92.0</b>	<b>182,659</b>	<b>173,420</b>	<b>94.9</b>

Note: Restraint Use includes shoulder belt only used, lap belt only used, both lap and shoulder belts used, child restraint used, restraint failure, and helmet worn.



## 5-Year Trend - Restraint Use Among Drivers

Restraint Use	2012			2013			2014			2015			2016		
	Drivers	Fatal Drivers	Injured Drivers	Drivers	Fatal Drivers	Injured Drivers	Drivers	Fatal Drivers	Injured Drivers	Drivers	Fatal Drivers	Injured Drivers	Drivers	Fatal Drivers	Injured Drivers
No belts available	774	2	120	485	3	79	435	2	63	584	2	87	340	0	52
Shoulder belt only used	239	0	30	236	0	25	231	0	40	313	0	34	750	1	100
Lap belt only used	270	2	47	336	0	32	333	1	39	411	0	50	281	0	32
Both lap & shoulder belts used	160,506	58	18,923	167,972	53	19,363	181,123	51	20,155	184,428	62	21,242	195,277	57	22,816
No belts used	1,436	39	488	1,285	29	457	1,160	34	387	1,216	36	422	1,181	42	438
Child restraint used	13	0	2	10	0	1	3	0	0	10	0	1	12	0	1
Child restraint not used, unavailable or improper use	12	0	0	7	0	0	7	0	0	11	0	2	3	0	0
Restraint failure	40	0	8	35	0	6	31	0	4	38	0	4	36	0	8
Restraint use unknown	19,817	17	829	20,116	25	843	21,436	20	977	21,834	20	1,257	29,419	37	1,162
Helmet worn	765	15	559	691	23	487	602	14	432	678	28	476	725	24	512
Helmet not worn	274	16	206	281	15	203	296	9	227	329	13	242	487	17	282
Helmet use unknown	75	2	29	69	4	21	104	3	42	120	3	43	98	6	36
Uncoded & errors	10,171	0	19	10,972	0	18	11,468	0	35	13,111	0	17	7,606	0	16
<b>Total</b>	<b>194,392</b>	<b>151</b>	<b>21,260</b>	<b>202,495</b>	<b>152</b>	<b>21,535</b>	<b>217,229</b>	<b>134</b>	<b>22,401</b>	<b>223,083</b>	<b>164</b>	<b>23,877</b>	<b>236,215</b>	<b>184</b>	<b>25,455</b>

## 5-Year Trend - Restraint Use Among Drivers Coded Drinking

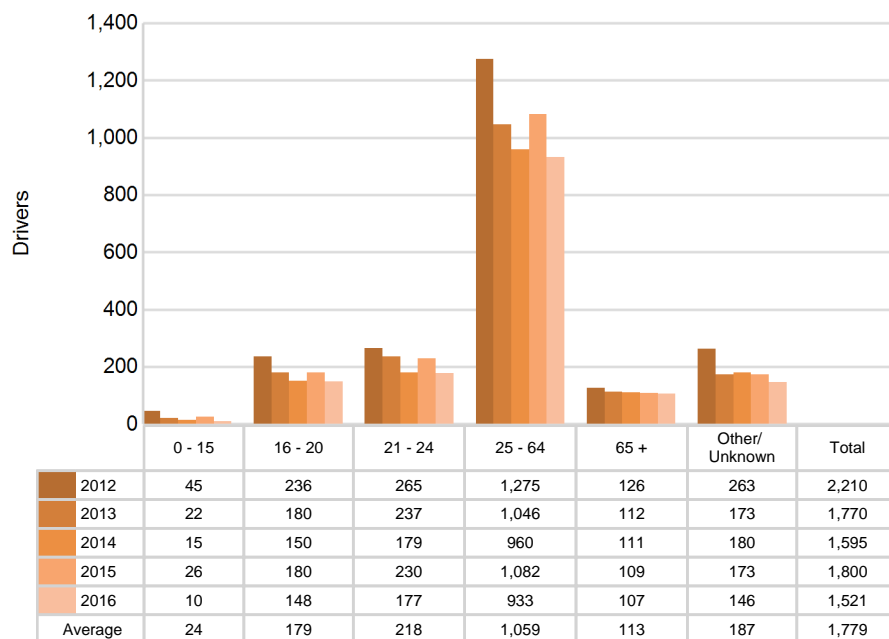
Restraint Use	2012			2013			2014			2015			2016		
	Drivers	Fatal Drivers	Injured Drivers	Drivers	Fatal Drivers	Injured Drivers	Drivers	Fatal Drivers	Injured Drivers	Drivers	Fatal Drivers	Injured Drivers	Drivers	Fatal Drivers	Injured Drivers
No belts available	19	0	4	15	0	9	8	0	1	12	0	4	9	0	4
Shoulder belt only used	7	0	3	8	0	1	7	0	2	7	0	2	15	0	3
Lap belt only used	5	0	3	3	0	1	7	0	2	5	0	2	2	0	1
Both lap & shoulder belts used	2,356	8	539	2,451	8	556	2,411	5	517	2,434	8	529	2,410	6	600
No belts used	240	11	125	182	5	107	164	7	105	170	13	98	172	18	94
Child restraint used	0	0	0	0	0	0	0	0	0	0	0	0	0	0	0
Child restraint not used, unavailable or improper use	0	0	0	0	0	0	0	0	0	0	0	0	0	0	0
Restraint failure	1	0	1	1	0	1	0	0	0	0	0	0	0	0	0
Restraint use unknown	537	3	150	481	3	139	467	1	116	517	7	146	486	11	123
Helmet worn	35	4	24	15	2	10	20	3	15	24	1	19	21	2	18
Helmet not worn	23	3	19	23	2	16	37	1	34	29	6	19	35	5	27
Helmet use unknown	3	0	3	3	0	1	3	0	2	1	0	0	2	1	1
Uncoded & errors	13	0	0	12	0	1	7	0	1	3	0	0	2	0	0
<b>Total</b>	<b>3,239</b>	<b>29</b>	<b>871</b>	<b>3,194</b>	<b>20</b>	<b>842</b>	<b>3,131</b>	<b>17</b>	<b>795</b>	<b>3,202</b>	<b>35</b>	<b>819</b>	<b>3,154</b>	<b>43</b>	<b>871</b>

## 5-Year Trend - Seatbelt Not Used Among Drivers by Age

Age Group	2012			2013			2014			2015			2016		
	Drivers	Fatal Drivers	Injured Drivers	Drivers	Fatal Drivers	Injured Drivers	Drivers	Fatal Drivers	Injured Drivers	Drivers	Fatal Drivers	Injured Drivers	Drivers	Fatal Drivers	Injured Drivers
0 - 15	45	1	8	22	0	2	15	0	3	26	0	5	10	0	1
16 - 20	236	6	85	180	3	76	150	4	50	180	3	74	148	2	71
21 - 24	265	4	113	237	3	109	179	6	63	230	6	81	177	6	79
25 - 64	1,275	22	354	1,046	22	308	960	20	297	1,082	25	313	933	28	310
65 +	126	8	37	112	4	34	111	6	27	109	4	32	107	6	27
Unknown	263	0	11	173	0	7	180	0	10	173	0	4	146	0	2
<b>Total</b>	<b>2,210</b>	<b>41</b>	<b>608</b>	<b>1,770</b>	<b>32</b>	<b>536</b>	<b>1,595</b>	<b>36</b>	<b>450</b>	<b>1,800</b>	<b>38</b>	<b>509</b>	<b>1,521</b>	<b>42</b>	<b>490</b>

Note: Seatbelt Not Used includes no belts available or no belts used.

## 5-Year Trend Driver Seatbelt Not Used

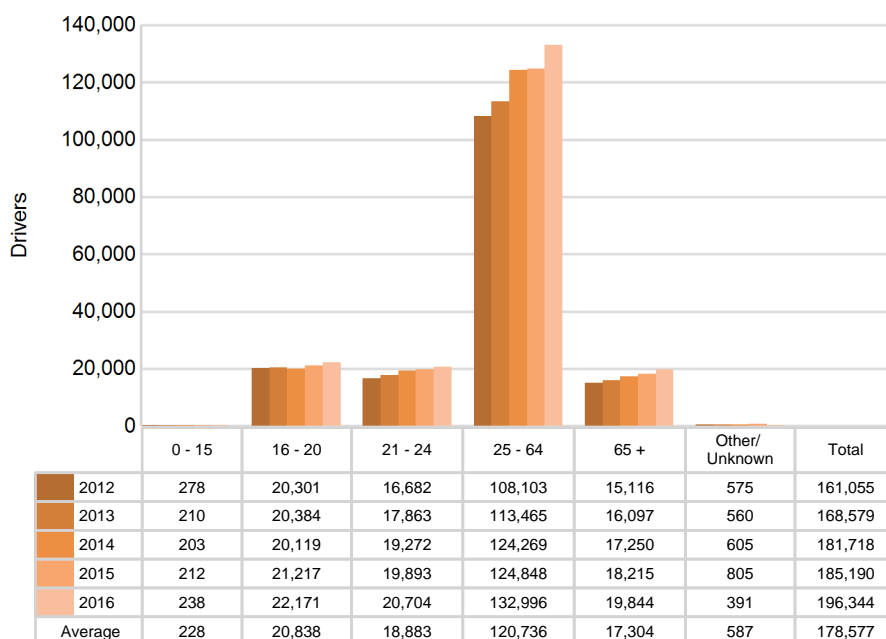


## 5-Year Trend - Seatbelt Used Among Drivers by Age

Age Group	2012			2013			2014			2015			2016		
	Drivers	Fatal Drivers	Injured Drivers	Drivers	Fatal Drivers	Injured Drivers	Drivers	Fatal Drivers	Injured Drivers	Drivers	Fatal Drivers	Injured Drivers	Drivers	Fatal Drivers	Injured Drivers
0 - 15	278	0	20	210	0	8	203	0	19	212	0	23	238	1	16
16 - 20	20,301	4	2,131	20,384	4	2,061	20,119	1	2,007	21,217	6	2,148	22,171	3	2,276
21 - 24	16,682	7	2,013	17,863	2	2,163	19,272	4	2,194	19,893	6	2,226	20,704	4	2,456
25 - 64	108,103	33	12,830	113,465	30	13,079	124,269	32	13,885	124,848	32	14,505	132,996	32	15,562
65 +	15,116	16	2,004	16,097	17	2,098	17,250	15	2,118	18,215	18	2,421	19,844	18	2,640
Unknown	575	0	10	560	0	17	605	0	15	805	0	7	391	0	6
<b>Total</b>	<b>161,055</b>	<b>60</b>	<b>19,008</b>	<b>168,579</b>	<b>53</b>	<b>19,426</b>	<b>181,718</b>	<b>52</b>	<b>20,238</b>	<b>185,190</b>	<b>62</b>	<b>21,330</b>	<b>196,344</b>	<b>58</b>	<b>22,956</b>

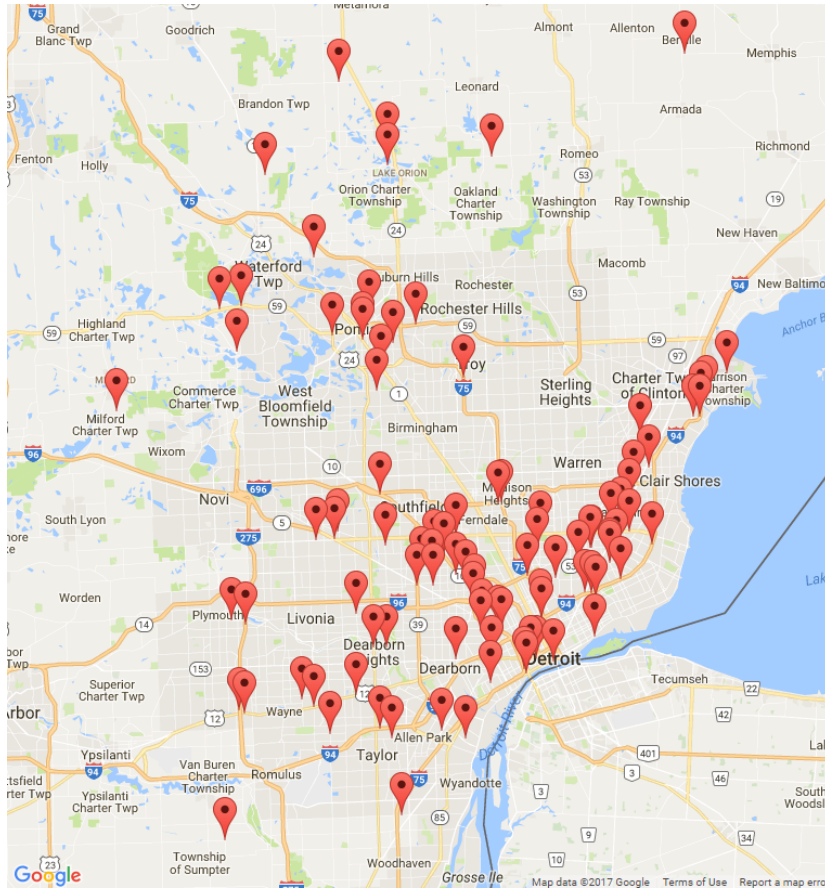
Note: Seatbelt Used includes shoulder belt only used, lap belt only used, both lap and shoulder belts used, and restraint failure.

### 5-Year Trend Driver Seatbelt Used



## 5-Year Trend - Drivers in Crashes by Hazardous Action

Hazardous Action	2012		2013		2014		2015		2016	
	Total Drivers in Crashes	Drivers in Fatal Crashes	Total Drivers in Crashes	Drivers in Fatal Crashes	Total Drivers in Crashes	Drivers in Fatal Crashes	Total Drivers in Crashes	Drivers in Fatal Crashes	Total Drivers in Crashes	Drivers in Fatal Crashes
None	92,776	176	97,129	184	103,387	155	108,110	199	111,862	229
Speed too fast	6,712	43	7,802	38	9,630	36	7,679	41	7,823	59
Speed too slow	87	0	91	0	72	1	96	2	77	1
Failed to yield	17,274	23	17,990	28	18,746	12	19,453	27	20,369	23
Disregard traffic control	4,179	23	4,304	12	4,307	14	4,682	24	5,020	22
Drove wrong way	186	1	170	0	215	4	240	0	215	2
Drove left of center	954	13	921	8	1,032	14	929	10	970	19
Improper passing	850	1	903	0	1,062	2	1,142	2	1,178	4
Improper lane use	5,107	2	5,295	3	5,697	2	6,512	7	7,200	3
Improper turn	1,824	1	1,843	2	2,023	1	2,350	5	2,378	2
Improper/no signal	233	0	218	0	219	0	238	0	177	0
Improper backing	2,928	1	2,976	0	3,211	3	3,210	1	3,211	0
Unable to stop in assured clear distance	32,622	23	33,485	15	36,625	12	38,099	20	40,955	17
Other	7,590	20	7,387	22	7,937	29	7,722	31	7,849	31
Unknown	11,188	43	11,419	57	12,311	66	11,855	51	15,860	57
Reckless driving	893	14	981	23	1,019	20	1,157	26	1,212	27
Careless/negligent driving	4,274	23	4,535	18	4,481	22	5,141	31	5,229	26
Uncoded & errors	4,715	4	5,046	6	5,255	6	4,468	2	4,630	3
<b>Total</b>	<b>194,392</b>	<b>411</b>	<b>202,495</b>	<b>416</b>	<b>217,229</b>	<b>399</b>	<b>223,083</b>	<b>479</b>	<b>236,215</b>	<b>525</b>



The picture above represents all 2016 alcohol-involved fatal crashes in District 2.

In 2016, there were 3,209 alcohol-involved crashes in District 2:

97	K - Fatal Crashes
178	A - Suspected Serious Injury Crashes
476	B - Suspected Minor Injury Crashes
599	C - Possible Injury Crashes
1,859	O - Property Damage Only/No Injury Crashes

### Office of Highway Safety Planning

Physical Address:  
7150 Harris Drive  
Dimondale, Michigan 48821

Mailing Address:  
P.O. Box 30634  
Lansing, Michigan 48909

Phone: (517) 284-3112  
Fax: (517) 284-3151

Find us on the web:  
[MichiganTrafficCrashFacts.org](http://MichiganTrafficCrashFacts.org)

