

MTCF

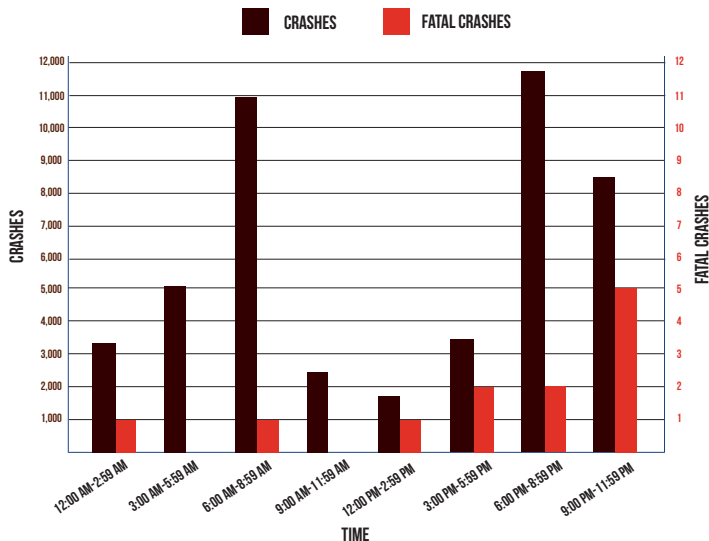
Michigan Traffic Crash Facts

DEER

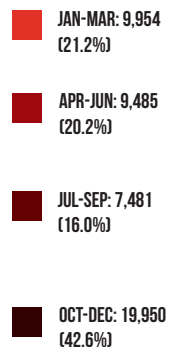
2016

Deer crashes include situations where a deer is a contributing factor, but does not necessarily come in contact with a traffic unit.

MOTOR VEHICLE-DEER CRASHES BY TIME OF DAY



MOTOR VEHICLE-DEER CRASHES BY TIME OF YEAR



Michigan had 46,870 (15.0% of the total crashes) motor vehicle-deer crashes.

Passenger cars and station wagons represented 78.1 percent (36,749) of the vehicles involved.

As a result of vehicle-deer crashes, 1,240 people were injured and 14 people were killed. Five (35.7%) of those killed were occupants in passenger vehicles and nine (64.3%) killed were motorcyclists.

Motor vehicle-deer involved crashes were highest during the 7:00-7:59 AM time period (4,732).

The top 10 counties experiencing vehicle-deer crashes were: Oakland 1,847; Kent 1,481; Lapeer 1,308; Jackson 1,254; Sanilac 1,119; Ottawa 1,116; Ingham 1,096; Calhoun 1,056; Genesee 1,000; and Eaton 998.

The highest number of vehicle-deer crashes occurred during November (8,943).

Of the motor vehicle-deer crashes, 19,950 (42.6%) occurred during the fourth quarter of the year.