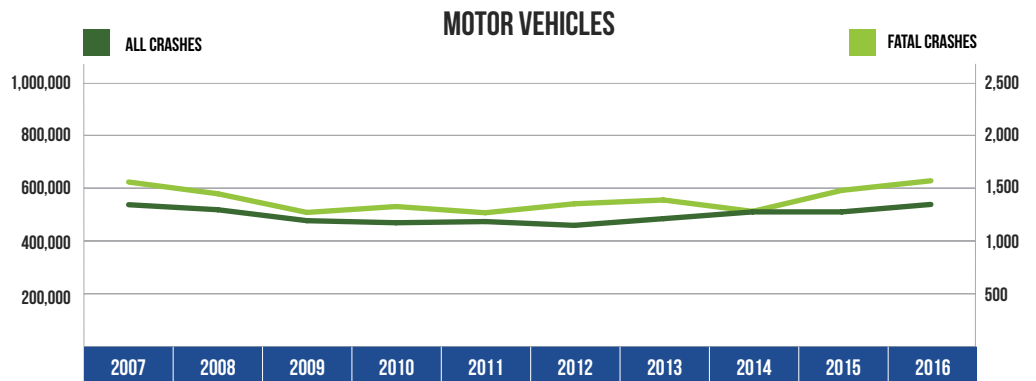


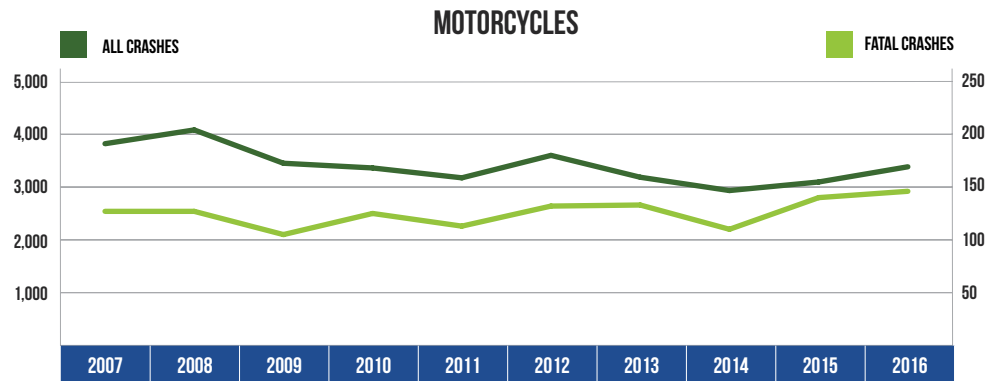
10 YEAR TRENDS-STATEWIDE (CONTINUED)

| MOTOR VEHICLES | | |
|----------------|-------------|---------------|
| Year | All Crashes | Fatal Crashes |
| 2007 | 537,228 | 1,558 |
| 2008 | 518,240 | 1,447 |
| 2009 | 476,801 | 1,270 |
| 2010 | 468,968 | 1,326 |
| 2011 | 473,501 | 1,267 |
| 2012 | 459,030 | 1,352 |
| 2013 | 484,446 | 1,388 |
| 2014 | 510,086 | 1,280 |
| 2015 | 510,074 | 1,479 |
| 2016 | 538,412 | 1,570 |



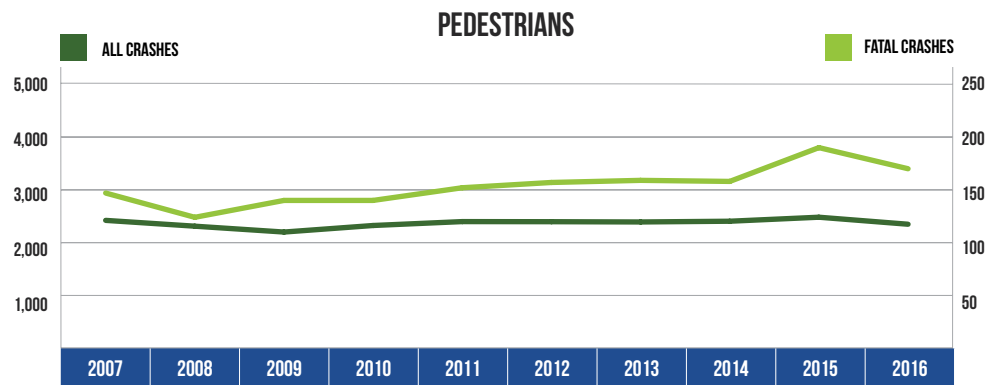
There were 538,412 motor vehicles involved in all crashes in 2016, up 0.2 percent from 2007. There were 1,570 motor vehicles involved in fatal crashes in 2016, up 0.8 percent from 2007.

| MOTORCYCLES | | |
|-------------|-------------|---------------|
| Year | All Crashes | Fatal Crashes |
| 2007 | 3,821 | 127 |
| 2008 | 4,082 | 127 |
| 2009 | 3,451 | 105 |
| 2010 | 3,362 | 125 |
| 2011 | 3,175 | 113 |
| 2012 | 3,600 | 132 |
| 2013 | 3,186 | 133 |
| 2014 | 2,934 | 110 |
| 2015 | 3,096 | 140 |
| 2016 | 3,384 | 146 |



There were 3,384 motorcycles involved in crashes in 2016, an 11.4 percent decrease from 2007. There were 146 motorcycles involved in fatal crashes in 2016, up 15.0 percent from 2007.

| PEDESTRIANS | | |
|-------------|-------------|---------------|
| Year | All Crashes | Fatal Crashes |
| 2007 | 2,422 | 147 |
| 2008 | 2,312 | 124 |
| 2009 | 2,201 | 140 |
| 2010 | 2,325 | 140 |
| 2011 | 2,399 | 152 |
| 2012 | 2,397 | 157 |
| 2013 | 2,392 | 159 |
| 2014 | 2,406 | 158 |
| 2015 | 2,482 | 190 |
| 2016 | 2,349 | 170 |



There were 2,349 pedestrians involved in crashes in 2016, down 3.0 percent from 2007. There were 170 pedestrians involved in fatal crashes in 2016, up 15.6 percent from 2007.