



2015

**MTCF**  
Michigan Traffic  
Crash Facts

# Michigan Traffic Crash Facts

## Reporting Criteria

Please pay particular attention to the wording when interpreting the three levels of data gathered for this report.

### Crash

The Crash Level analyzes data related to crash events and returns one result per crash.

Examples: Time, weather, and location.

### Units

The Units Level analyzes the experience of the units in the crash and returns one result per vehicle, driver, pedestrian, bicyclist, or train.

Examples: Vehicle type, driver condition, and unit events.

### People

The People Level analyzes the experience of the people involved in the crash and returns one result per occupant/person/party.

Examples: Age, injury severity, and seat belt or helmet use.

### **KABCO Injury Indicator:**

K = Killed

A = Incapacitating Injury

B = Non-incapacitating Injury

C = Possible Injury

O = No Injury

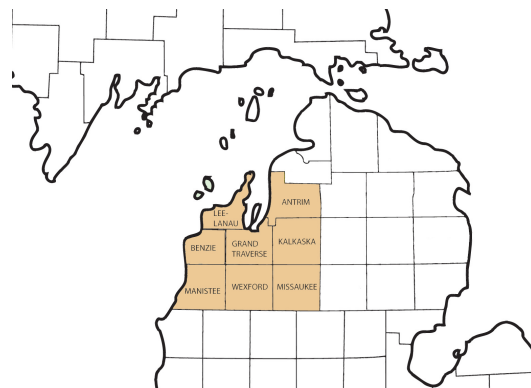
Property Damage Only (PDO)



## Michigan State Police (MSP) Traffic Safety Network Traverse Bay Area

### 2015 Traffic Crash Data & 2011-2015 5-Year Trends

Traffic Safety Network Traverse Bay Area is comprised of Antrim, Benzie, Grand Traverse, Kalkaska, Leelanau, Manistee, Missaukee, and Wexford counties. Trend tables for this report are based on those counties.



### Sources:

The crashes in this report occurred on public roadways in Michigan and resulted in injuries, fatalities, or property damage (with \$1,000 as a reporting threshold). The information was gathered from Michigan Traffic Crash Report Forms (UD-10) submitted by local police departments, sheriff's offices, and the Michigan State Police. Other related information was obtained from the departments of Transportation, State, and Community Health.

This page left intentionally blank

## TSN Traverse Bay Area Experience

In 2015:

There were 12,506 drivers involved in 8,523 motor vehicle crashes in MSP Traffic Safety Network Traverse Bay Area. Of those crashes, 37 were classified as fatal, resulting in 40 fatalities. An additional 1,609 persons were injured.

Traffic Safety Network Traverse Bay Area experienced the highest number of motor vehicle crashes (979) in November, the highest number of fatal crashes (6) and the highest number of persons killed (7) in August.

Michigan driver statistics indicate 6.6 percent of licensed drivers in Traffic Safety Network Traverse Bay Area were age 16-20, and 11.0 percent of drivers in crashes were also in that age group.

### 2015 - Crashes and Injuries by Month

Month	Crashes				Persons	
	Total	Fatal	Injury	Property Damage Only (PDO)	Fatalities	Injuries
January	865	4	86	775	5	121
February	883	4	98	781	5	140
March	528	2	72	454	2	99
April	529	2	65	462	2	83
May	536	2	88	446	2	109
June	718	1	88	629	1	109
July	711	4	132	575	4	186
August	655	6	135	514	7	212
September	625	3	105	517	3	153
October	790	1	83	706	1	124
November	979	5	89	885	5	137
December	704	3	102	599	3	136
<b>Total</b>	<b>8,523</b>	<b>37</b>	<b>1,143</b>	<b>7,343</b>	<b>40</b>	<b>1,609</b>

### 2015 - Driver Statistics

Age Group	Statewide			Driver Rates	
	2015 Population	Licensed Drivers	Drivers in Crashes	Per 10k Population	Per 10k Licensed
0 - 15	1,938,950	52,553	17	0.1	3.2
16 - 20	675,253	474,427	1,371	20.3	28.9
21 - 24	580,519	480,600	1,025	17.7	21.3
25 - 64	5,157,183	4,760,526	7,845	15.2	16.5
65 +	1,570,671	1,390,210	1,678	10.7	12.1
Unknown	--	--	570	--	--
<b>Total</b>	<b>9,922,576</b>	<b>7,158,316</b>	<b>12,506</b>	<b>12.6</b>	<b>17.5</b>

### 2015 - Vehicles in Crashes

Vehicle Type	Motor Vehicles		Fatal Crashes		Injury Crashes	PDO Crashes
	Number of Vehicles	% of Total	Number	% of Total	Number	Number
Passenger car & station wagon	9,156	73.2	37	63.8	1,339	7,780
Van & motorhome	438	3.5	0	0.0	56	382
Pickup truck	2,151	17.2	7	12.1	306	1,838
Small truck under 10,000 lbs. GVWR	140	1.1	0	0.0	20	120
Cycle	102	0.8	5	8.6	69	28
Moped	13	0.1	0	0.0	11	2
Go Cart	0	0.0	0	0.0	0	0
Snowmobile	26	0.2	1	1.7	21	4
Off-Road Vehicle (ORV) & All-Terrain Vehicle (ATV)	23	0.2	2	3.4	20	1
Other	43	0.3	0	0.0	5	38
Truck/bus over 10,000 lbs.	264	2.1	6	10.3	34	224
Unknown	150	1.2	0	0.0	10	140
<b>Total</b>	<b>12,506</b>	<b>100.0</b>	<b>58</b>	<b>100.0</b>	<b>1,891</b>	<b>10,557</b>

# MSP Traffic Safety Network Traverse Bay Area (continued)

## 5-Year Trend - Crashes by Month

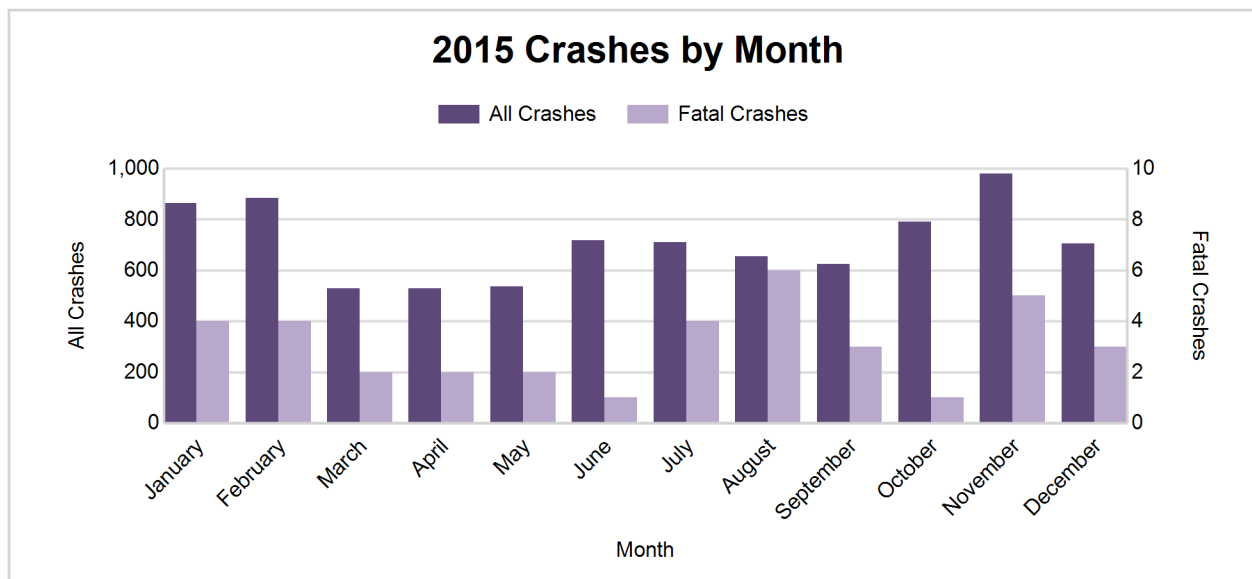
Month	2011		2012		2013		2014		2015	
	Total Crashes	Fatal Crashes	Total Crashes	Fatal Crashes	Total Crashes	Fatal Crashes	Total Crashes	Fatal Crashes	Total Crashes	Fatal Crashes
January	948	5	890	2	898	5	1,133	0	865	4
February	641	4	722	3	726	3	861	2	883	4
March	594	3	495	2	642	0	742	1	528	2
April	514	3	394	1	601	2	574	2	529	2
May	491	3	530	4	555	0	544	0	536	2
June	704	4	673	5	677	2	680	1	718	1
July	678	2	632	4	668	5	637	4	711	4
August	569	0	629	3	670	3	639	5	655	6
September	665	1	627	2	643	8	600	4	625	3
October	805	1	873	2	765	1	772	1	790	1
November	943	1	1,011	3	1,214	6	1,209	2	979	5
December	961	6	846	5	1,079	3	817	4	704	3
<b>Total</b>	<b>8,513</b>	<b>33</b>	<b>8,322</b>	<b>36</b>	<b>9,138</b>	<b>38</b>	<b>9,208</b>	<b>26</b>	<b>8,523</b>	<b>37</b>

Note: † Indicates that the highest number of total crashes reported in the 5-year period occurred in the same month

## 5-Year Trend - Crashes by Day of Week

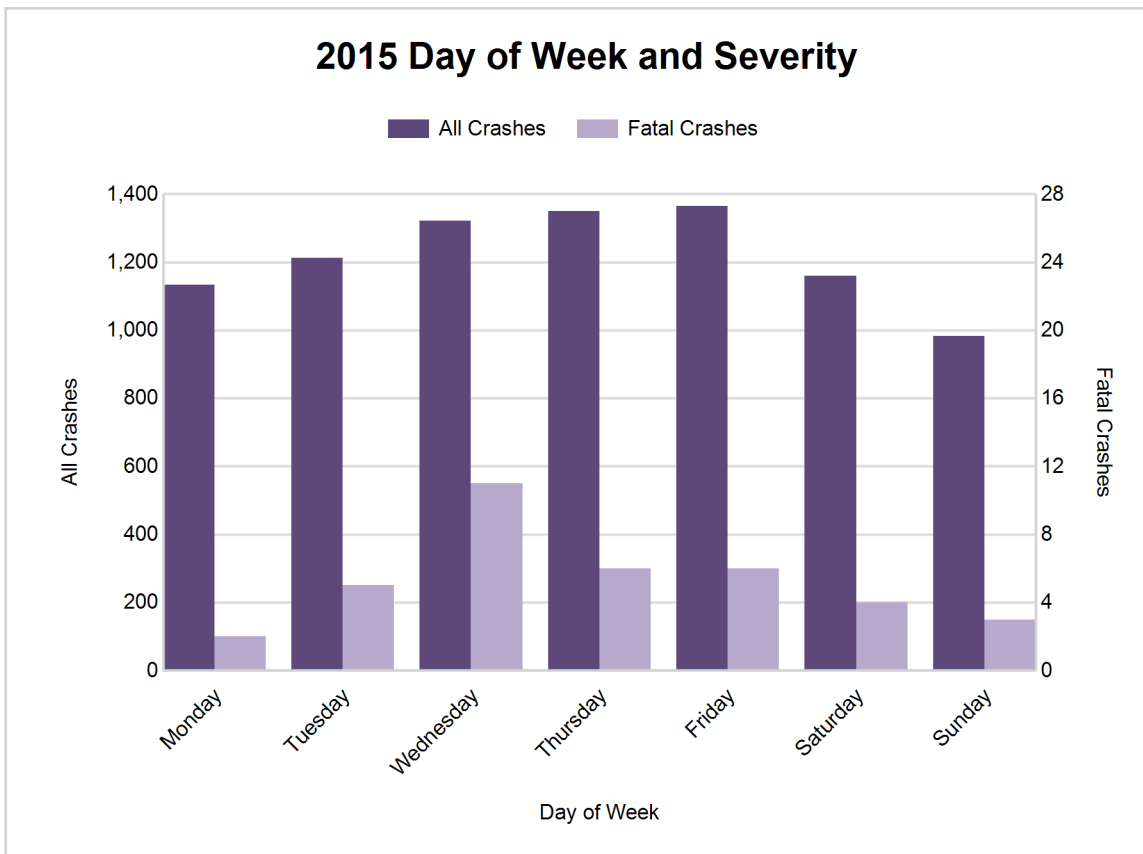
Day	2011		2012		2013		2014		2015	
	Total Crashes	Fatal Crashes	Total Crashes	Fatal Crashes	Total Crashes	Fatal Crashes	Total Crashes	Fatal Crashes	Total Crashes	Fatal Crashes
Monday	1,199	3	1,151	3	1,337	7	1,285	3	1,133	2
Tuesday	1,217	5	1,133	5	1,448	5	1,394	4	1,212	5
Wednesday	1,184	4	1,161	6	1,383	3	1,424	1	1,321	11
Thursday	1,336	7	1,252	2	1,419	3	1,330	3	1,350	6
Friday	1,372	5	1,538	10	1,441	10	1,648	4	1,365	6
Saturday	1,191	5	1,121	5	1,180	6	1,148	8	1,160	4
Sunday	1,014	4	966	5	930	4	979	3	982	3
<b>Total</b>	<b>8,513</b>	<b>33</b>	<b>8,322</b>	<b>36</b>	<b>9,138</b>	<b>38</b>	<b>9,208</b>	<b>26</b>	<b>8,523</b>	<b>37</b>

Note: † Indicates that the highest number of total crashes reported in the 5-year period occurred on the same day of the week



## 2015 - Crashes by Day of Week

Day	All Crashes		Fatal Crashes		Injury Crashes			PDO Crashes
	Number	% of Total	Number	% of Fatal	A	B	C	Number
Monday	1,133	13.3	2	5.4	12	27	104	988
Tuesday	1,212	14.2	5	13.5	16	41	93	1,057
Wednesday	1,321	15.5	11	29.7	13	44	103	1,150
Thursday	1,350	15.8	6	16.2	16	48	119	1,161
Friday	1,365	16.0	6	16.2	20	51	111	1,177
Saturday	1,160	13.6	4	10.8	25	54	92	985
Sunday	982	11.5	3	8.1	21	43	90	825
<b>Total</b>	<b>8,523</b>	<b>100.0</b>	<b>37</b>	<b>100.0</b>	<b>123</b>	<b>308</b>	<b>712</b>	<b>7,343</b>

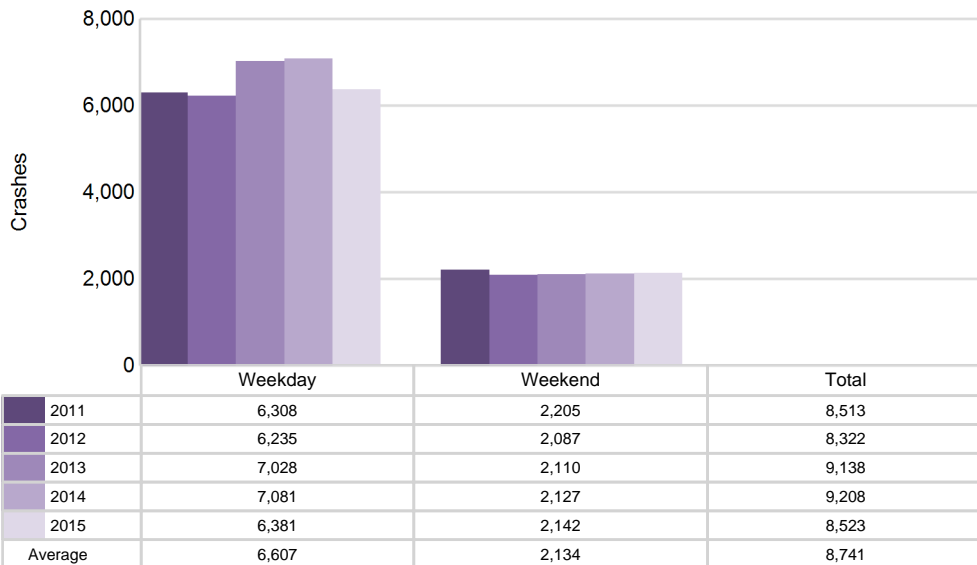


# MSP Traffic Safety Network Traverse Bay Area (continued)

## 5-Year Trend - Crashes by Weekday and Weekend

Portion of Week	2011		2012		2013		2014		2015	
	Total Crashes	Fatal Crashes	Total Crashes	Fatal Crashes	Total Crashes	Fatal Crashes	Total Crashes	Fatal Crashes	Total Crashes	Fatal Crashes
Weekday	6,308	24	6,235	26	7,028	28	7,081	15	6,381	30
Weekend	2,205	9	2,087	10	2,110	10	2,127	11	2,142	7
<b>Total</b>	<b>8,513</b>	<b>33</b>	<b>8,322</b>	<b>36</b>	<b>9,138</b>	<b>38</b>	<b>9,208</b>	<b>26</b>	<b>8,523</b>	<b>37</b>

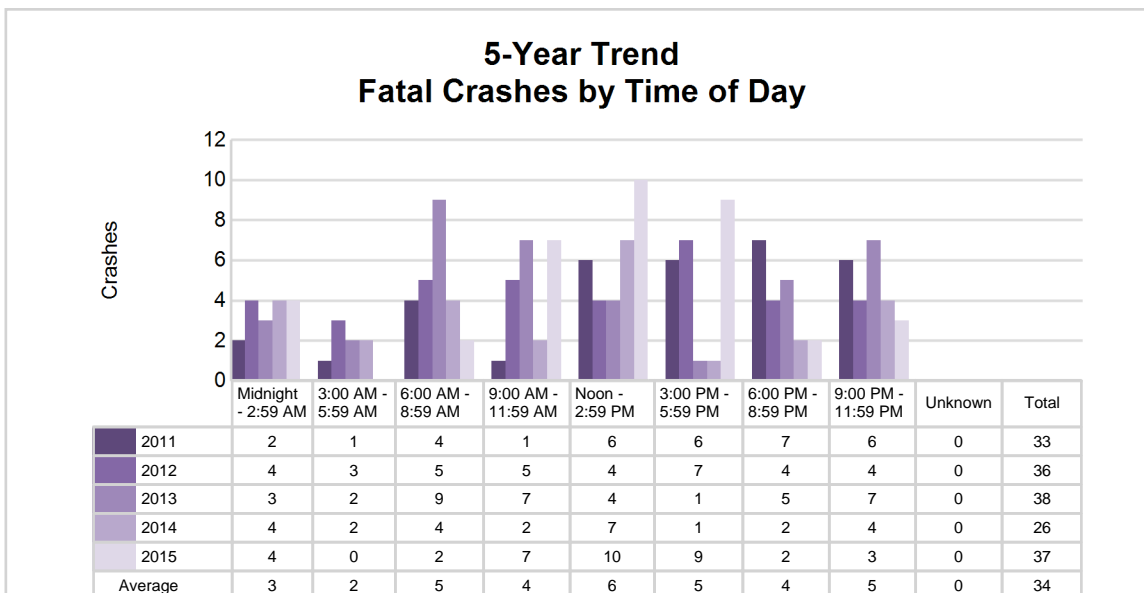
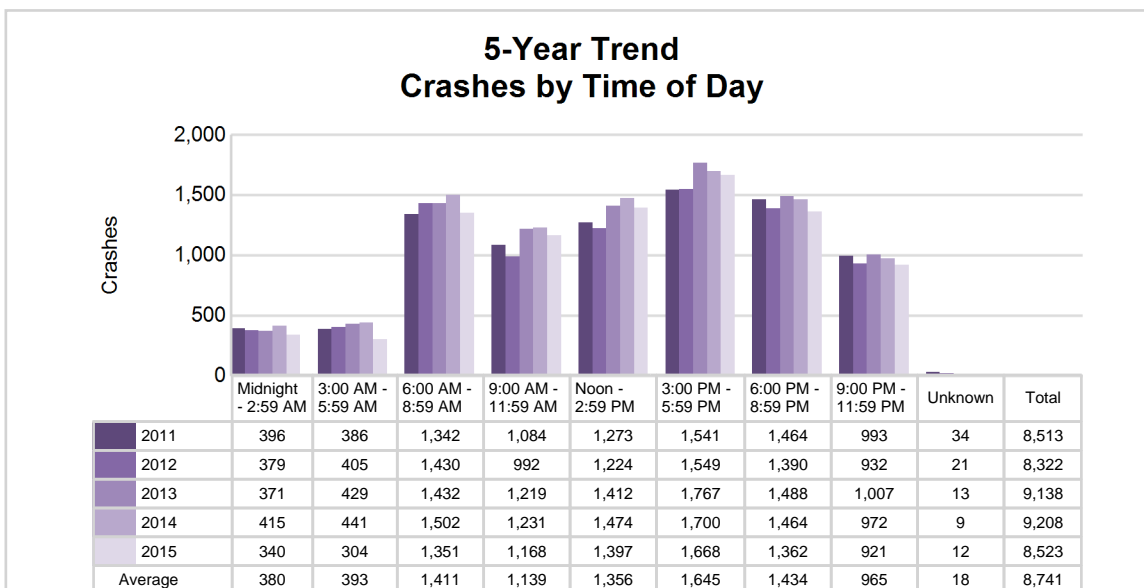
## 5-Year Crash Trends by Weekday (Monday - Friday) and Weekend (Saturday & Sunday)



## 5-Year Trend - Crashes by Time of Day

Time of Day	2011		2012		2013		2014		2015	
	Total Crashes	Fatal Crashes	Total Crashes	Fatal Crashes	Total Crashes	Fatal Crashes	Total Crashes	Fatal Crashes	Total Crashes	Fatal Crashes
Midnight - 2:59 AM	396	2	379	4	371	3	415	4	340	4
3:00 AM - 5:59 AM	386	1	405	3	429	2	441	2	304	0
6:00 AM - 8:59 AM	1,342	4	1,430	5	1,432	9	1,502	4	1,351	2
9:00 AM - 11:59 AM	1,084	1	992	5	1,219	7	1,231	2	1,168	7
Noon - 2:59 PM	1,273	6	1,224	4	1,412	4	1,474	7	1,397	10
3:00 PM - 5:59 PM	1,541 †	6	1,549 †	7	1,767 †	1	1,700 †	1	1,668 †	9
6:00 PM - 8:59 PM	1,464	7	1,390	4	1,488	5	1,464	2	1,362	2
9:00 PM - 11:59 PM	993	6	932	4	1,007	7	972	4	921	3
Unknown	34	0	21	0	13	0	9	0	12	0
<b>Total</b>	<b>8,513</b>	<b>33</b>	<b>8,322</b>	<b>36</b>	<b>9,138</b>	<b>38</b>	<b>9,208</b>	<b>26</b>	<b>8,523</b>	<b>37</b>

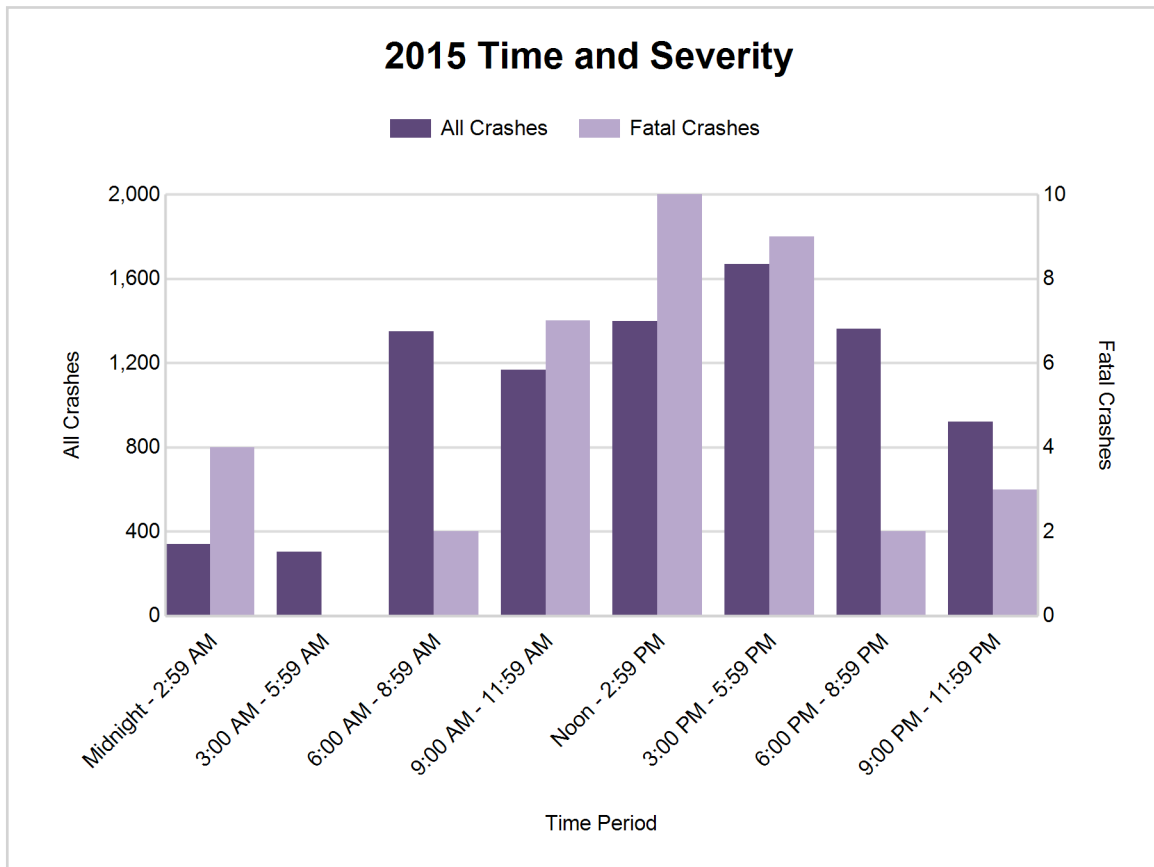
Note: † Indicates that the highest number of total crashes reported in the 5-year period occurred in the same time period



# MSP Traffic Safety Network Traverse Bay Area (continued)

## 2015 - Time and Severity

Time of Day	All Crashes		Fatal Crashes		Injury Crashes			PDO Crashes
	Number	% of Total	Number	% of Fatal	A	B	C	Number
Midnight - 2:59 AM	340	4.0	4	10.8	4	15	24	293
3:00 AM - 5:59 AM	304	3.6	0	0.0	10	9	14	271
6:00 AM - 8:59 AM	1,351	15.9	2	5.4	9	30	66	1,244
9:00 AM - 11:59 AM	1,168	13.7	7	18.9	19	38	129	975
Noon - 2:59 PM	1,397	16.4	10	27.0	24	79	162	1,122
3:00 PM - 5:59 PM	1,668	19.6	9	24.3	26	63	184	1,386
6:00 PM - 8:59 PM	1,362	16.0	2	5.4	15	46	82	1,217
9:00 PM - 11:59 PM	921	10.8	3	8.1	16	28	50	824
Unknown	12	0.1	0	0.0	0	0	1	11
<b>Total</b>	<b>8,523</b>	<b>100.0</b>	<b>37</b>	<b>100.0</b>	<b>123</b>	<b>308</b>	<b>712</b>	<b>7,343</b>

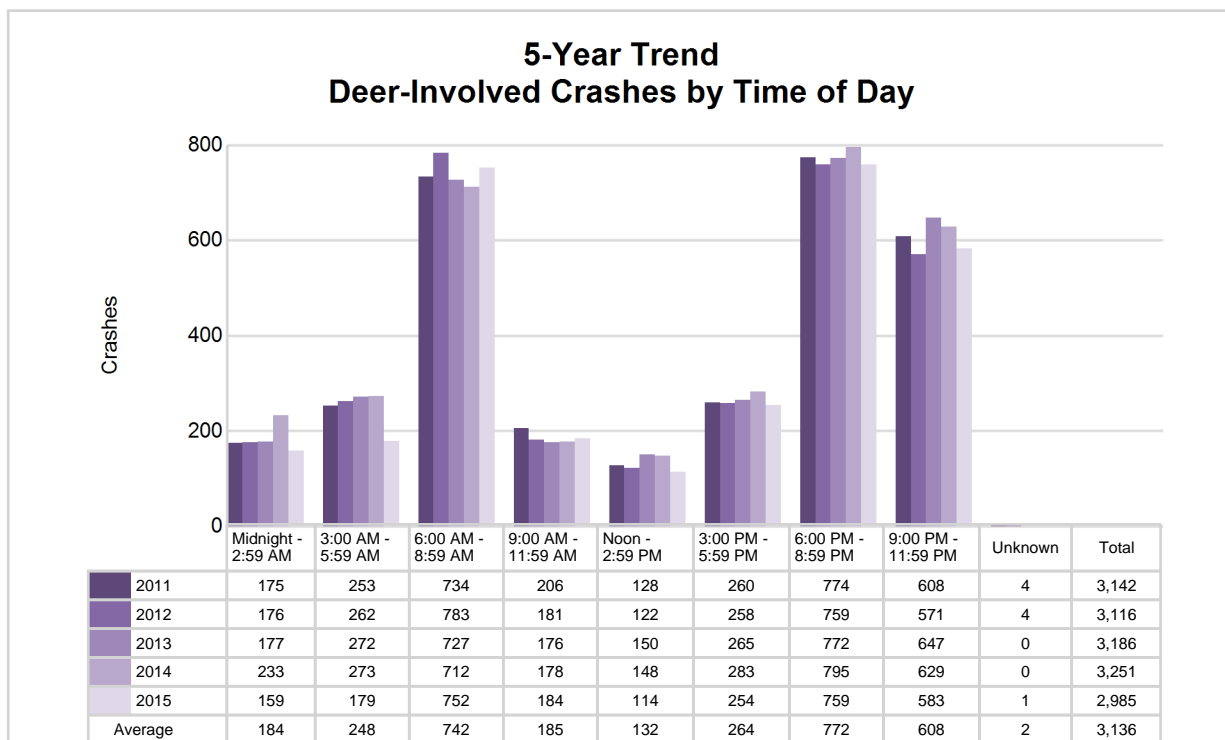




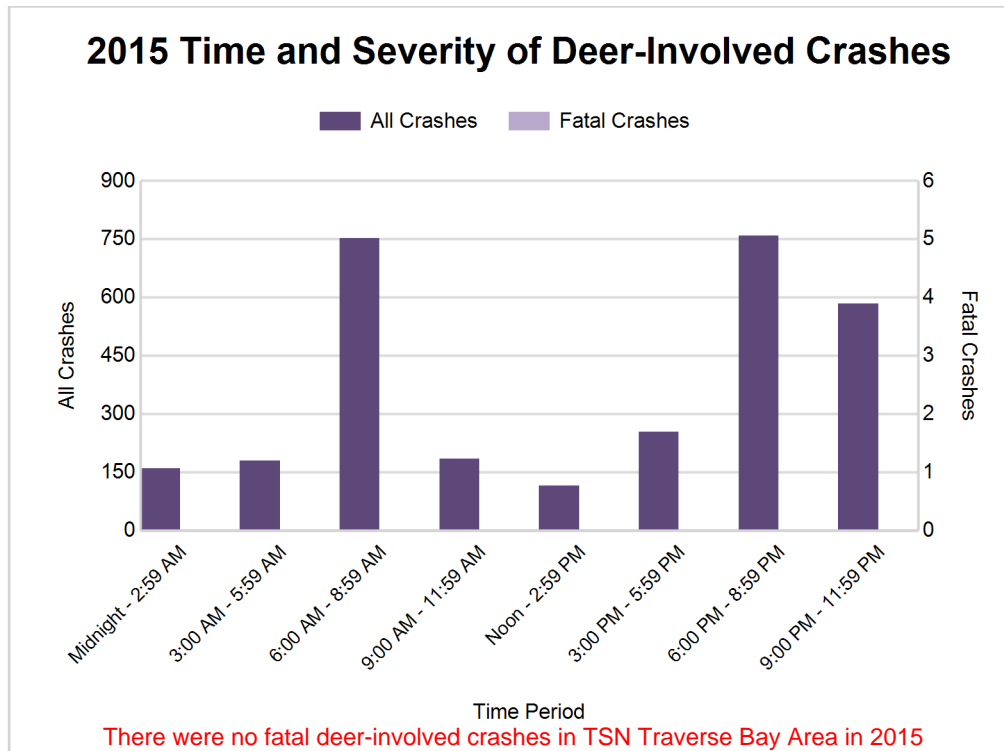
## 5-Year Trend - Deer-Involved Crashes by Time of Day

Time of Day	2011		2012		2013		2014		2015	
	Total Crashes	Fatal Crashes	Total Crashes	Fatal Crashes	Total Crashes	Fatal Crashes	Total Crashes	Fatal Crashes	Total Crashes	Fatal Crashes
Midnight - 2:59 AM	175	0	176	0	177	0	233	0	159	0
3:00 AM - 5:59 AM	253	0	262	0	272	0	273	0	179	0
6:00 AM - 8:59 AM	734	0	783	0	727	0	712	0	752	0
9:00 AM - 11:59 AM	206	0	181	0	176	0	178	0	184	0
Noon - 2:59 PM	128	0	122	0	150	0	148	0	114	0
3:00 PM - 5:59 PM	260	0	258	0	265	0	283	0	254	0
6:00 PM - 8:59 PM	774	0	759	0	772	0	795	0	759	0
9:00 PM - 11:59 PM	608	0	571	0	647	0	629	0	583	0
Unknown	4	0	4	0	0	0	0	0	1	0
<b>Total</b>	<b>3,142</b>	<b>0</b>	<b>3,116</b>	<b>0</b>	<b>3,186</b>	<b>0</b>	<b>3,251</b>	<b>0</b>	<b>2,985</b>	<b>0</b>

Note: † Indicates that the highest number of total crashes reported in the 5-year period occurred in the same time period



## MSP Traffic Safety Network Traverse Bay Area (continued)

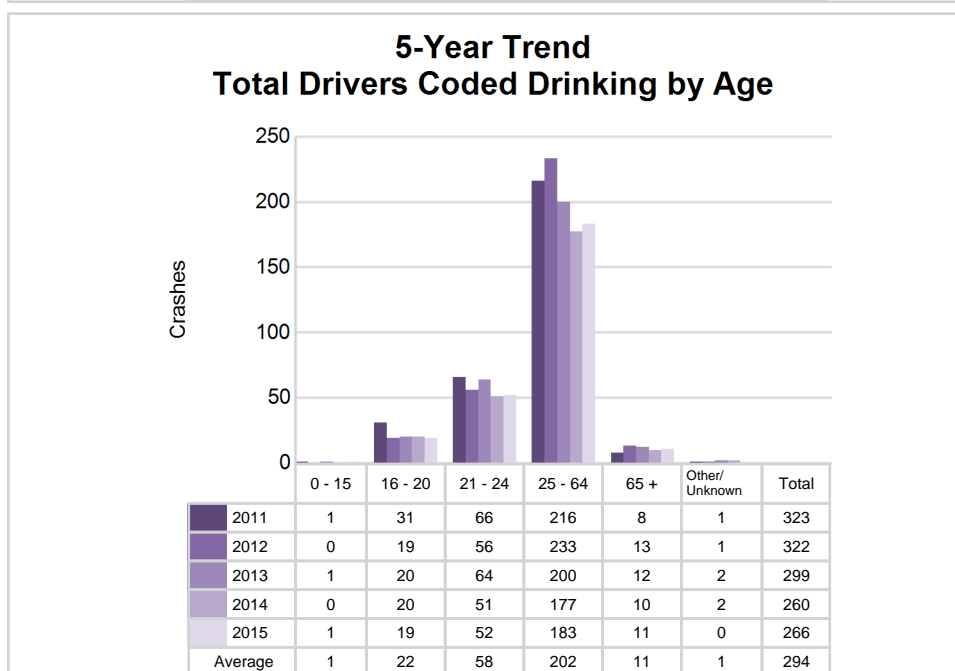
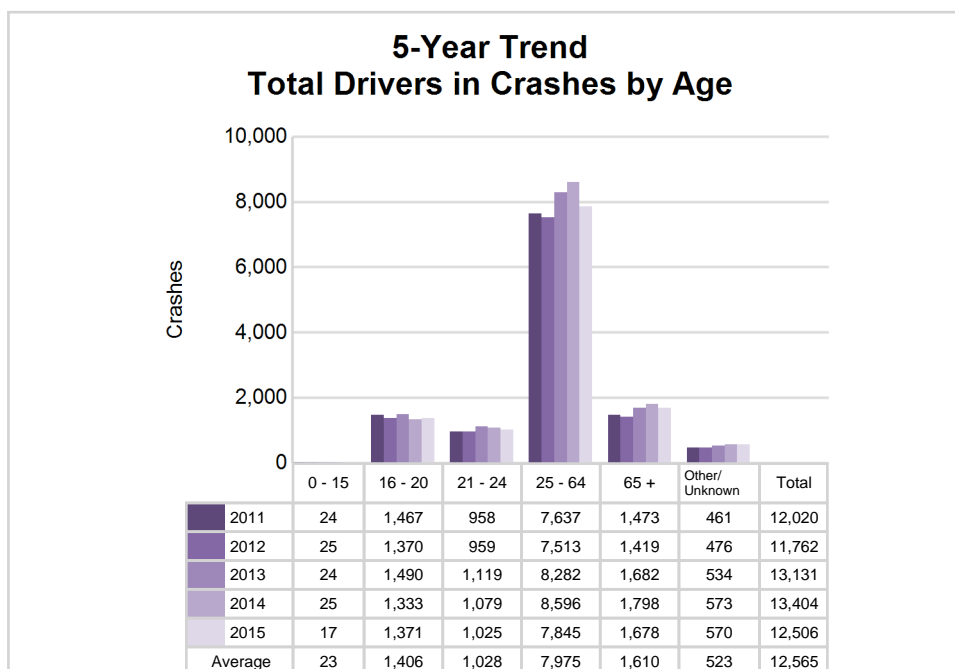


### 2015 - Reported Motor Vehicle Crashes by County

County	Crashes											Persons	
	Total	Fatal	Injury	Property Damage	Inter-state	US Route	State Route	Local Street	Alcohol-Involved	Drug-Involved	Deer-Involved	Fatalities	Injuries
Antrim	803	3	103	697	0	184	135	484	21	3	409	3	143
Benzie	557	4	68	485	0	146	123	288	16	4	281	4	92
Grand Traverse	3,439	10	490	2,939	0	1,015	431	1,993	104	29	629	11	697
Kalkaska	497	3	80	414	0	114	120	263	14	0	207	3	114
Leelanau	635	4	70	561	0	0	306	329	35	3	293	4	102
Manistee	910	0	107	803	0	280	154	476	29	4	455	0	154
Missaukee	589	4	65	520	0	0	244	345	20	4	368	5	80
Wexford	1,093	9	160	924	0	319	296	478	29	10	343	10	227
<b>Total</b>	<b>8,523</b>	<b>37</b>	<b>1,143</b>	<b>7,343</b>	<b>0</b>	<b>2,058</b>	<b>1,809</b>	<b>4,656</b>	<b>268</b>	<b>57</b>	<b>2,985</b>	<b>40</b>	<b>1,609</b>

## 5-Year Trend - Drivers in Crashes Coded Drinking by Driver Age

Driver Age	2011		2012		2013		2014		2015	
	Total Drivers in Crashes	Total Drivers Coded Drinking	Total Drivers in Crashes	Total Drivers Coded Drinking	Total Drivers in Crashes	Total Drivers Coded Drinking	Total Drivers in Crashes	Total Drivers Coded Drinking	Total Drivers in Crashes	Total Drivers Coded Drinking
0 - 15	24	1	25	0	24	1	25	0	17	1
16 - 20	1,467	31	1,370	19	1,490	20	1,333	20	1,371	19
21 - 24	958	66	959	56	1,119	64	1,079	51	1,025	52
25 - 64	7,637	216	7,513	233	8,282	200	8,596	177	7,845	183
65 +	1,473	8	1,419	13	1,682	12	1,798	10	1,678	11
Unknown	461	1	476	1	534	2	573	2	570	0
<b>Total</b>	<b>12,020</b>	<b>323</b>	<b>11,762</b>	<b>322</b>	<b>13,131</b>	<b>299</b>	<b>13,404</b>	<b>260</b>	<b>12,506</b>	<b>266</b>



# MSP Traffic Safety Network Traverse Bay Area (continued)

## 2015 - Bodily Alcohol Concentration (BAC) Results Among All Vehicle Drivers in Alcohol-Involved Crashes by Age

Age Group	Drivers				BAC Result Range for Drivers Coded Drinking				
	Total Drivers in Alcohol-Involved Crashes	Total Drivers Tested in all Crashes	Total Drivers Coded Drinking, Tested	Total Drivers Coded Drinking	BAC = 0.00	BAC 0.01 g/dL to 0.07 g/dL	BAC 0.08 g/dL to 0.16 g/dL	BAC 0.17 g/dL and Above	BAC Not Reported
0 - 15	1	0	0	1	0	0	0	0	1
16 - 20	31	48	16	19	0	3	6	4	6
21 - 24	57	63	48	52	0	8	19	16	9
25 - 64	231	270	156	183	2	20	55	50	56
65 +	21	39	11	11	0	3	5	1	2
Unknown	19	0	0	0	0	0	0	0	0
<b>Total</b>	<b>360</b>	<b>420</b>	<b>231</b>	<b>266</b>	<b>2</b>	<b>34</b>	<b>85</b>	<b>71</b>	<b>74</b>

Notes: BAC measured in grams (g) per deciliter (dL).  
 BAC may not be reported if drivers are not tested or if the results are not available immediately (as in the case of a blood test).  
 A driver may be coded by the officer as drinking even though no test is administered.

## Alcohol-Involved Crashes

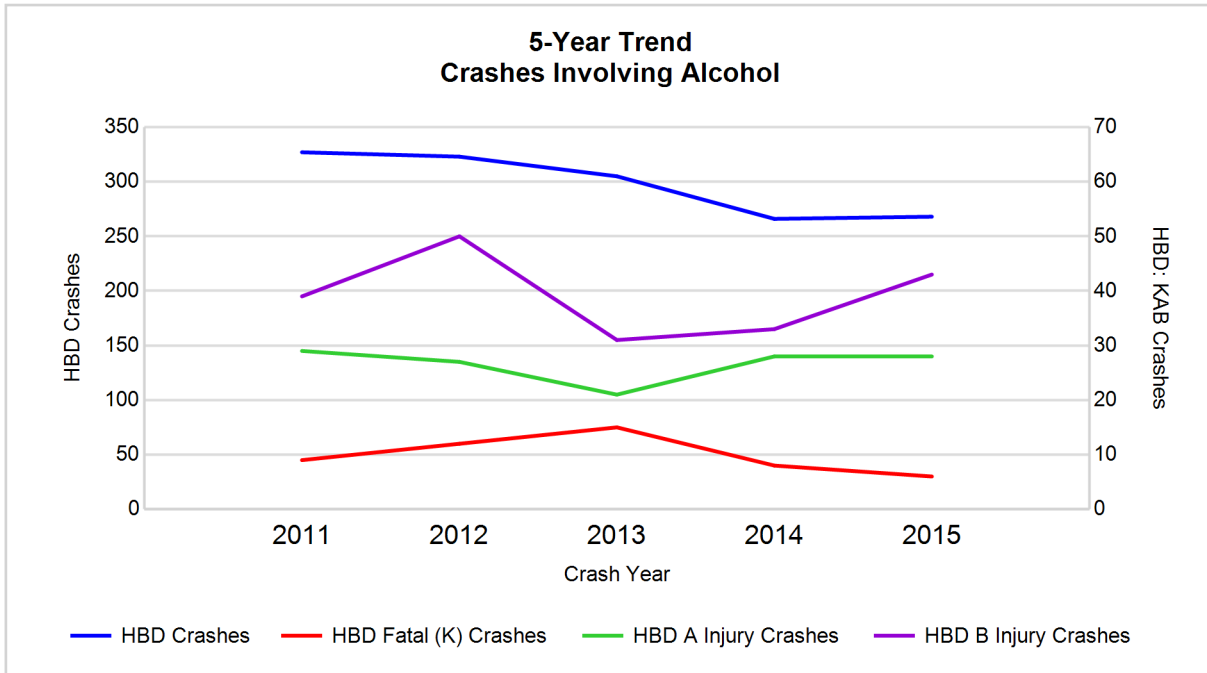
In 2015, there were 360 drivers in alcohol-involved crashes; 266 (73.9%) of those drivers were coded as had-been-drinking by the officer on the crash form.

- 156 (58.6%) of the 266 drivers had a blood alcohol concentration (BAC) of 0.08 g/dL (grams per deciliter) or greater, and 71 (45.5%) of the 156 drivers had a BAC at or above 0.17 g/dL.
- 231 (86.8%) of the 266 drivers were coded as had-been-drinking and were tested for alcohol consumption.

## 5-Year Trend - Crashes Involving Alcohol

Year	All Crashes	HBD Crashes	% HBD	Fatal Crashes	HBD Fatal Crashes	% HBD	A Injury Crashes	HBD A Injury Crashes	% HBD	B Injury Crashes	HBD B Injury Crashes	% HBD
2011	8,513	327	3.8	33	9	27.3	159	29	18.2	317	39	12.3
2012	8,322	323	3.9	36	12	33.3	162	27	16.7	337	50	14.8
2013	9,138	305	3.3	38	15	39.5	146	21	14.4	314	31	9.9
2014	9,208	266	2.9	26	8	30.8	140	28	20.0	280	33	11.8
2015	8,523	268	3.1	37	6*	16.2*	123*	28	22.8**	308	43	14.0

Note: \* Indicates that the most recent year is the lowest number or percentage reported in the 5-year period in that column  
 \*\* Indicates that the most recent year is the highest number or percentage reported in the 5-year period in that column



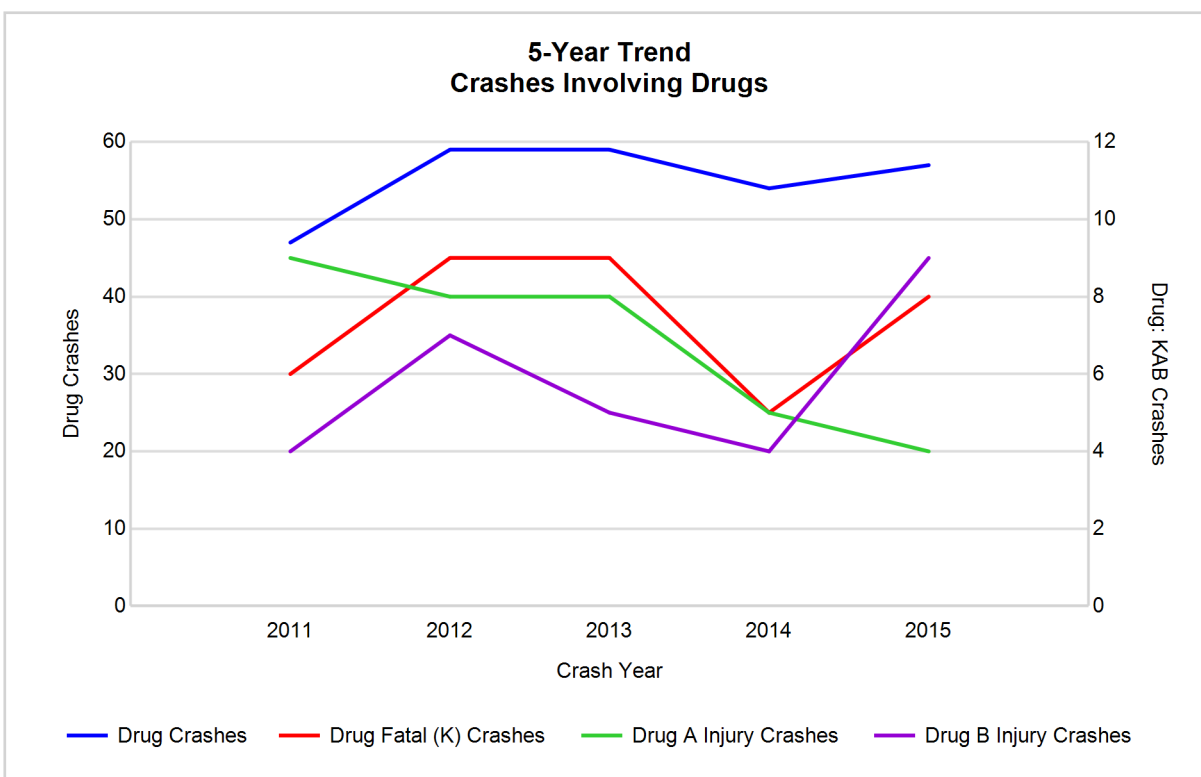
Note: Had-Been-Drinking (HBD)

## 5-Year Trend - Crashes Involving Drugs

Year	All Crashes	Drug Crashes	% Drug	Fatal Crashes	Drug Fatal Crashes	% Drug	A Injury Crashes	Drug A Injury Crashes	% Drug	B Injury Crashes	Drug B Injury Crashes	% Drug
2011	8,513	47	0.6	33	6	18.2	159	9	5.7	317	4	1.3
2012	8,322	59	0.7	36	9	25.0	162	8	4.9	337	7	2.1
2013	9,138	59	0.6	38	9	23.7	146	8	5.5	314	5	1.6
2014	9,208	54	0.6	26	5	19.2	140	5	3.6	280	4	1.4
2015	8,523	57	0.7	37	8	21.6	123*	4*	3.3*	308	9**	2.9**

Note: \* Indicates that the most recent year is the lowest number or percentage reported in the 5-year period in that column

\*\* Indicates that the most recent year is the highest number or percentage reported in the 5-year period in that column

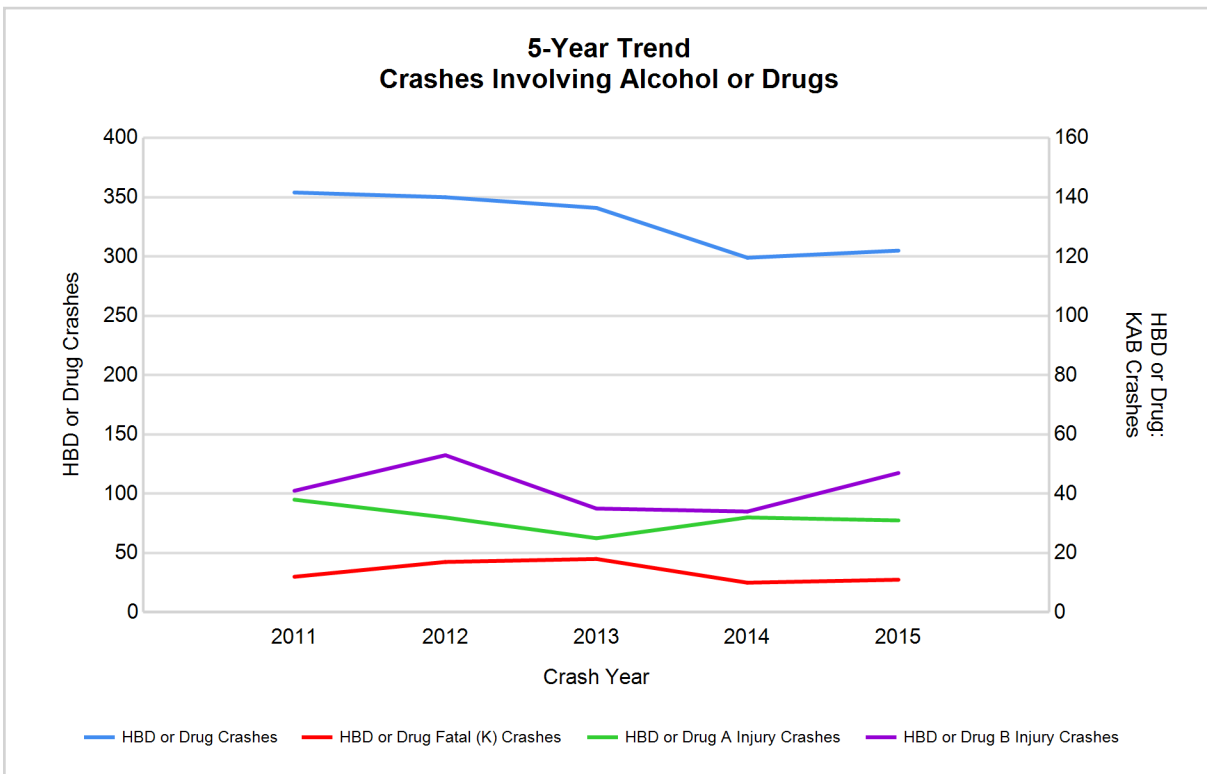


# MSP Traffic Safety Network Traverse Bay Area (continued)

## 5-Year Trend - Crashes Involving Alcohol or Drugs

Year	All Crashes	HBD or Drug Crashes	% HBD or Drug	Fatal Crashes	HBD or Drug Fatal Crashes	% HBD or Drug	A Injury Crashes	HBD or Drug A Injury Crashes	% HBD or Drug	B Injury Crashes	HBD or Drug B Injury Crashes	% HBD or Drug
2011	8,513	354	4.2	33	12	36.4	159	38	23.9	317	41	12.9
2012	8,322	350	4.2	36	17	47.2	162	32	19.8	337	53	15.7
2013	9,138	341	3.7	38	18	47.4	146	25	17.1	314	35	11.1
2014	9,208	299	3.2	26	10	38.5	140	32	22.9	280	34	12.1
2015	8,523	305	3.6	37	11	29.7*	123*	31	25.2**	308	47	15.3

Note: \* Indicates that the most recent year is the lowest number or percentage reported in the 5-year period in that column  
 \*\* Indicates that the most recent year is the highest number or percentage reported in the 5-year period in that column



Note: Had-Been-Drinking (HBD)

# MSP Traffic Safety Network Traverse Bay Area (continued)

## 2015 - Restraints Worn Among Vehicle Drivers and Injured Passengers by Vehicle Type

Vehicle Type	Total Occupants			Fatalities			A - Incapacitating			B - Non-incapacitating			C - Possible Injury			No Injury		
	Total	Used Restraint	%	Total	Used Restraint	%	Total	Used Restraint	%	Total	Used Restraint	%	Total	Used Restraint	%	Total	Used Restraint	%
Passenger car & station wagon	9,464	8,922	94.3	26	15	57.7	91	64	70.3	242	226	93.4	801	770	96.1	8,040	7,843	97.5
Van & motorhome	455	424	93.2	0	0	0.0	3	2	66.7	10	6	60.0	38	37	97.4	388	379	97.7
Pickup truck	2,228	2,067	92.8	3	1	33.3	17	8	47.1	67	55	82.1	134	123	91.8	1,915	1,874	97.9
Small truck under 10,000 lbs. GVWR	141	130	92.2	0	0	0.0	1	0	0.0	3	3	100.0	3	3	100.0	124	123	99.2
Cycle	111	69	62.2	5	5	100.0	19	9	47.4	30	21	70.0	27	16	59.3	29	18	62.1
Moped	13	9	69.2	0	0	0.0	5	3	60.0	2	2	100.0	4	2	50.0	2	2	100.0
Go Cart	0	0	0.0	0	0	0.0	0	0	0.0	0	0	0.0	0	0	0.0	0	0	0.0
Snowmobile	28	20	71.4	1	1	100.0	5	5	100.0	9	6	66.7	6	4	66.7	7	4	57.1
Off-Road Vehicle (ORV) & All-Terrain Vehicle (ATV)	24	10	41.7	2	1	50.0	2	1	50.0	9	3	33.3	8	4	50.0	3	1	33.3
Other	43	29	67.4	0	0	0.0	0	0	0.0	0	0	0.0	2	0	0.0	38	29	76.3
Truck/bus over 10,000 lbs.	266	249	93.6	1	0	0.0	0	0	0.0	6	5	83.3	7	6	85.7	246	238	96.7
Unknown	150	2	1.3	0	0	0.0	0	0	0.0	0	0	0.0	0	0	0.0	3	1	33.3
<b>Total</b>	<b>12,923</b>	<b>11,931</b>	<b>92.3</b>	<b>38</b>	<b>23</b>	<b>60.5</b>	<b>143</b>	<b>92</b>	<b>64.3</b>	<b>378</b>	<b>327</b>	<b>86.5</b>	<b>1,030</b>	<b>965</b>	<b>93.7</b>	<b>10,795</b>	<b>10,512</b>	<b>97.4</b>

Note: Restraint Use includes shoulder belt only used, lap belt only used, both lap and shoulder belts used, child restraint used, restraint failure, and helmet worn.

## 2015 - Restraints Worn Among Vehicle Drivers and Injured Passengers by Age

Age Group	Total Occupants			Fatalities			A - Incapacitating			B - Non-incapacitating			C - Possible Injury			No Injury		
	Total	Used Restraint	%	Total	Used Restraint	%	Total	Used Restraint	%	Total	Used Restraint	%	Total	Used Restraint	%	Total	Used Restraint	%
0 - 15	122	109	89.3	1	0	0.0	6	4	66.7	27	23	85.2	78	72	92.3	10	10	100.0
16 - 20	1,432	1,376	96.1	7	5	71.4	19	9	47.4	49	39	79.6	141	130	92.2	1,213	1,191	98.2
21 - 24	1,054	1,007	95.5	2	1	50.0	17	14	82.4	44	39	88.6	74	68	91.9	916	885	96.6
25 - 64	8,013	7,748	96.7	15	7	46.7	80	49	61.3	201	174	86.6	574	538	93.7	7,131	6,973	97.8
65 +	1,731	1,684	97.3	13	10	76.9	21	16	76.2	55	52	94.5	162	156	96.3	1,478	1,449	98.0
Unknown	571	7	1.2	0	0	0.0	0	0	0.0	2	0	0.0	1	1	100.0	47	4	8.5
<b>Total</b>	<b>12,923</b>	<b>11,931</b>	<b>92.3</b>	<b>38</b>	<b>23</b>	<b>60.5</b>	<b>143</b>	<b>92</b>	<b>64.3</b>	<b>378</b>	<b>327</b>	<b>86.5</b>	<b>1,030</b>	<b>965</b>	<b>93.7</b>	<b>10,795</b>	<b>10,512</b>	<b>97.4</b>

Note: Restraint Use includes shoulder belt only used, lap belt only used, both lap and shoulder belts used, child restraint used, restraint failure, and helmet worn.

# MSP Traffic Safety Network Traverse Bay Area (continued)

## 5-Year Trend - Restraint Use Among Drivers

Restraint Use	2011			2012			2013			2014			2015		
	Drivers	Fatal Drivers	Injured Drivers	Drivers	Fatal Drivers	Injured Drivers	Drivers	Fatal Drivers	Injured Drivers	Drivers	Fatal Drivers	Injured Drivers	Drivers	Fatal Drivers	Injured Drivers
No belts available	75	0	11	100	0	13	59	1	11	118	0	12	74	1	15
Shoulder belt only used	3	0	0	5	0	1	6	0	2	25	0	2	36	0	9
Lap belt only used	81	0	5	61	0	5	40	0	7	68	0	4	54	0	1
Both lap & shoulder belts used	10,975	11	973	10,710	15	944	12,077	17	1,034	12,207	7	924	11,372	10	946
No belts used	91	9	38	87	8	36	63	8	27	105	1	31	97	9	43
Child restraint used	0	0	0	3	0	0	0	0	0	0	0	0	0	0	0
Child restraint not used, unavailable or improper use	4	0	1	4	0	0	3	0	0	1	0	0	0	0	0
Restraint failure	5	0	1	7	0	0	12	0	1	6	1	1	3	0	0
Restraint use unknown	216	1	32	222	3	26	246	1	31	248	0	32	213	1	22
Helmet worn	148	5	111	121	5	81	117	2	84	110	2	85	101	6	70
Helmet not worn	10	0	9	26	2	21	22	0	21	26	0	20	41	0	33
Helmet use unknown	6	0	2	7	0	1	4	1	2	3	0	1	10	1	4
Uncoded & errors	406	0	3	409	0	1	482	0	2	487	0	0	505	0	1
<b>Total</b>	<b>12,020</b>	<b>26</b>	<b>1,186</b>	<b>11,762</b>	<b>33</b>	<b>1,129</b>	<b>13,131</b>	<b>30</b>	<b>1,222</b>	<b>13,404</b>	<b>11</b>	<b>1,112</b>	<b>12,506</b>	<b>28</b>	<b>1,144</b>

## 5-Year Trend - Restraint Use Among Drivers Coded Drinking

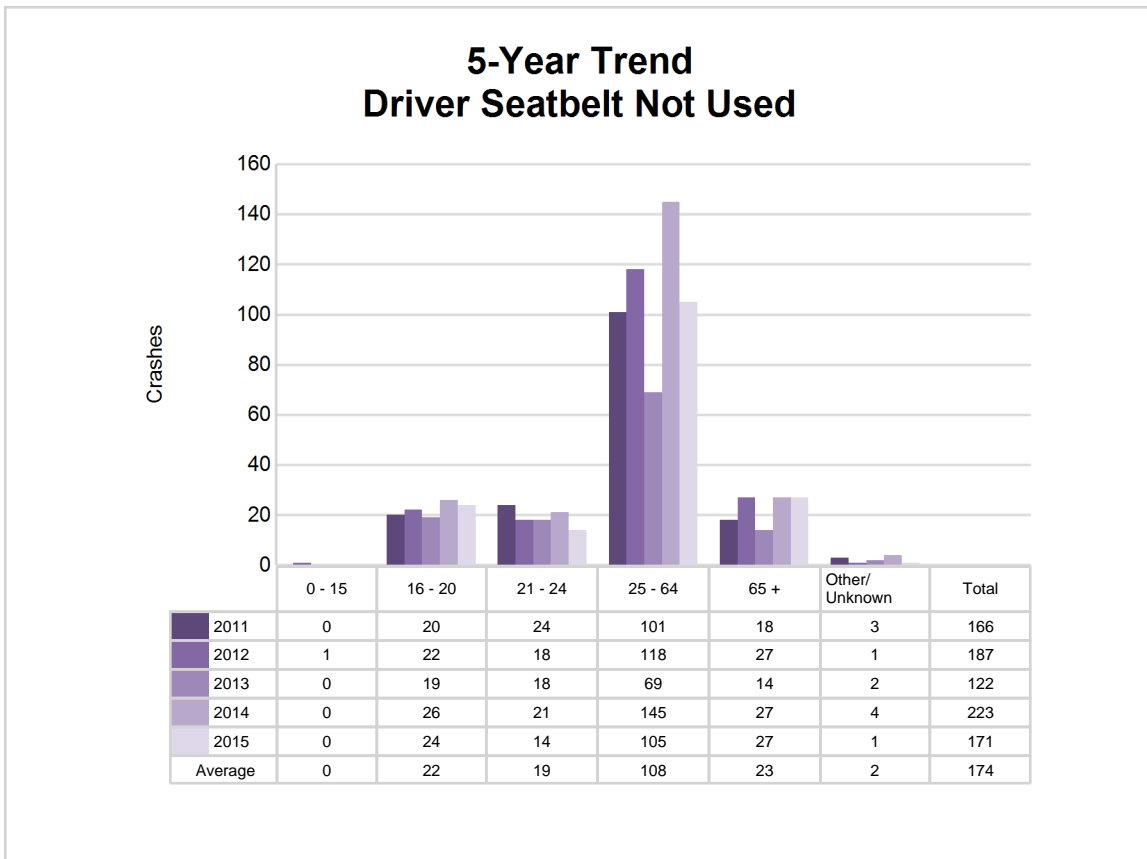
Restraint Use	2011			2012			2013			2014			2015		
	Drivers	Fatal Drivers	Injured Drivers	Drivers	Fatal Drivers	Injured Drivers	Drivers	Fatal Drivers	Injured Drivers	Drivers	Fatal Drivers	Injured Drivers	Drivers	Fatal Drivers	Injured Drivers
No belts available	2	0	2	2	0	0	0	0	0	6	0	1	3	0	3
Shoulder belt only used	0	0	0	2	0	0	2	0	2	1	0	1	1	0	0
Lap belt only used	1	0	0	1	0	0	3	0	2	2	0	0	0	0	0
Both lap & shoulder belts used	226	2	58	236	3	65	205	4	46	187	1	46	193	1	55
No belts used	23	2	15	21	6	8	17	5	7	15	1	13	19	2	14
Child restraint used	0	0	0	0	0	0	0	0	0	0	0	0	0	0	0
Child restraint not used, unavailable or improper use	0	0	0	0	0	0	0	0	0	0	0	0	0	0	0
Restraint failure	0	0	0	0	0	0	0	0	0	2	0	0	0	0	0
Restraint use unknown	50	0	12	47	1	13	57	1	16	35	0	14	32	0	12
Helmet worn	8	4	1	6	2	4	10	1	7	8	1	7	9	2	7
Helmet not worn	8	0	8	6	0	5	3	0	3	3	0	3	7	0	7
Helmet use unknown	3	0	1	0	0	0	0	0	0	0	0	0	1	0	1
Uncoded & errors	2	0	0	1	0	0	2	0	0	1	0	0	1	0	0
<b>Total</b>	<b>323</b>	<b>8</b>	<b>97</b>	<b>322</b>	<b>12</b>	<b>95</b>	<b>299</b>	<b>11</b>	<b>83</b>	<b>260</b>	<b>3</b>	<b>85</b>	<b>266</b>	<b>5</b>	<b>99</b>



## 5-Year Trend - Seatbelt Not Used Among Drivers by Age

Age Group	2011			2012			2013			2014			2015		
	Drivers	Fatal Drivers	Injured Drivers	Drivers	Fatal Drivers	Injured Drivers	Drivers	Fatal Drivers	Injured Drivers	Drivers	Fatal Drivers	Injured Drivers	Drivers	Fatal Drivers	Injured Drivers
0 - 15	0	0	0	1	0	0	0	0	0	0	0	0	0	0	0
16 - 20	20	1	6	22	1	7	19	0	11	26	1	6	24	1	12
21 - 24	24	0	12	18	2	6	18	0	4	21	0	7	14	1	3
25 - 64	101	6	29	118	2	29	69	6	20	145	0	29	105	5	36
65 +	18	2	1	27	3	7	14	3	3	27	0	1	27	3	7
Unknown	3	0	1	1	0	0	2	0	0	4	0	0	1	0	0
<b>Total</b>	<b>166</b>	<b>9</b>	<b>49</b>	<b>187</b>	<b>8</b>	<b>49</b>	<b>122</b>	<b>9</b>	<b>38</b>	<b>223</b>	<b>1</b>	<b>43</b>	<b>171</b>	<b>10</b>	<b>58</b>

Note: Seatbelt Not Used includes no belts available or no belts used.

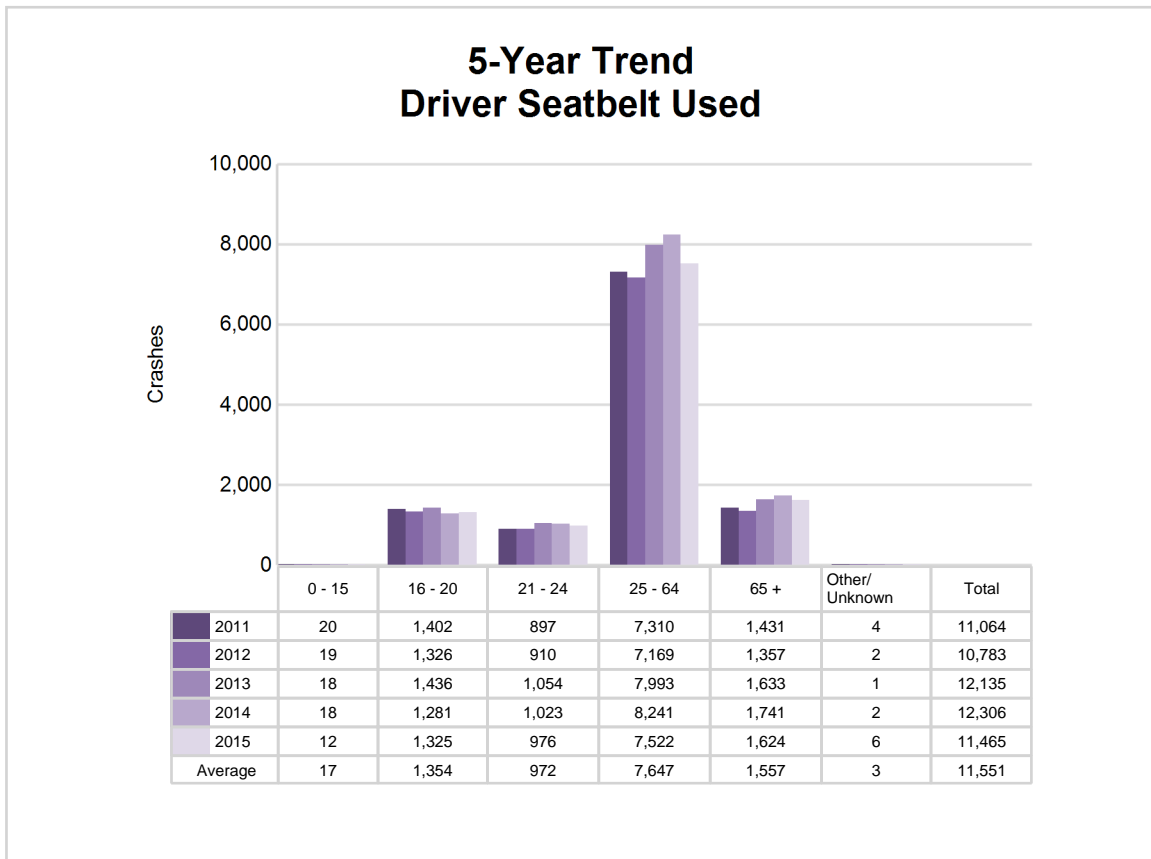


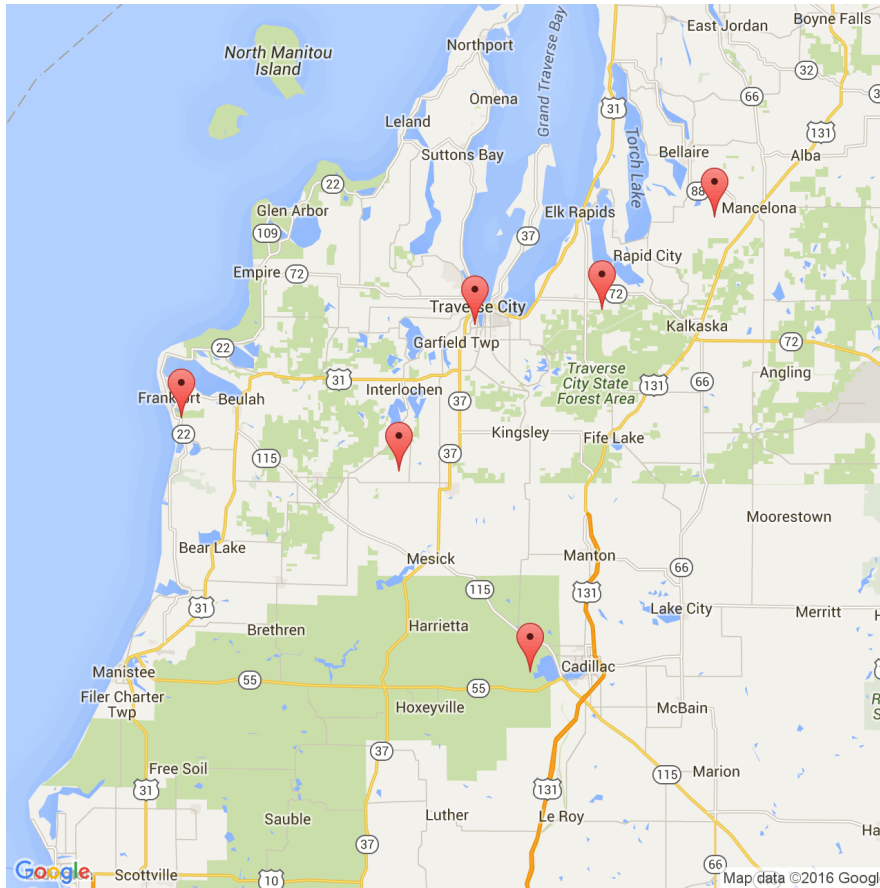
# MSP Traffic Safety Network Traverse Bay Area (continued)

## 5-Year Trend - Seatbelt Used Among Drivers by Age

Age Group	2011			2012			2013			2014			2015		
	Drivers	Fatal Drivers	Injured Drivers	Drivers	Fatal Drivers	Injured Drivers	Drivers	Fatal Drivers	Injured Drivers	Drivers	Fatal Drivers	Injured Drivers	Drivers	Fatal Drivers	Injured Drivers
0 - 15	20	0	3	19	0	0	18	1	1	18	0	3	12	0	3
16 - 20	1,402	0	130	1,326	1	149	1,436	3	129	1,281	0	98	1,325	3	131
21 - 24	897	4	97	910	3	71	1,054	0	92	1,023	3	99	976	0	93
25 - 64	7,310	2	600	7,169	7	588	7,993	7	653	8,241	5	568	7,522	3	558
65 +	1,431	5	149	1,357	4	142	1,633	6	169	1,741	0	163	1,624	4	171
Unknown	4	0	0	2	0	0	1	0	0	2	0	0	6	0	0
<b>Total</b>	<b>11,064</b>	<b>11</b>	<b>979</b>	<b>10,783</b>	<b>15</b>	<b>950</b>	<b>12,135</b>	<b>17</b>	<b>1,044</b>	<b>12,306</b>	<b>8</b>	<b>931</b>	<b>11,465</b>	<b>10</b>	<b>956</b>

Note: Seatbelt Used includes shoulder belt only used, lap belt only used, both lap and shoulder belts used, and restraint failure.





The picture above represents all 2015 alcohol-involved fatal crashes in TSN Traverse Bay Area.

In 2015, there were 268 alcohol-involved crashes in TSN Traverse Bay Area:

- 6 K - Fatal Crashes
- 28 A - Incapacitating Injury Crashes
- 43 B - Non-incapacitating Injury Crashes
- 51 C - Possible Injury Crashes
- 140 O - Property Damage Only/No Injury Crashes



## Office of Highway Safety Planning

Physical Address:  
7150 Harris Drive  
Dimondale, Michigan 48821

Mailing Address:  
P.O. Box 30634  
Lansing, Michigan 48909

Phone: (517) 284-3140  
Fax: (517) 284-3151

Find us on the web:  
[MichiganTrafficCrashFacts.org](http://MichiganTrafficCrashFacts.org)

