



2015

MTCF
Michigan Traffic
Crash Facts

Michigan Traffic Crash Facts

Reporting Criteria

Please pay particular attention to the wording when interpreting the three levels of data gathered for this report.

Crash

The Crash Level analyzes data related to crash events and returns one result per crash.

Examples: Time, weather, and location.

Units

The Units Level analyzes the experience of the units in the crash and returns one result per vehicle, driver, pedestrian, bicyclist, or train.

Examples: Vehicle type, driver condition, and unit events.

People

The People Level analyzes the experience of the people involved in the crash and returns one result per occupant/person/party.

Examples: Age, injury severity, and seat belt or helmet use.

KABCO Injury Indicator:

K = Killed

A = Incapacitating Injury

B = Non-incapacitating Injury

C = Possible Injury

O = No Injury

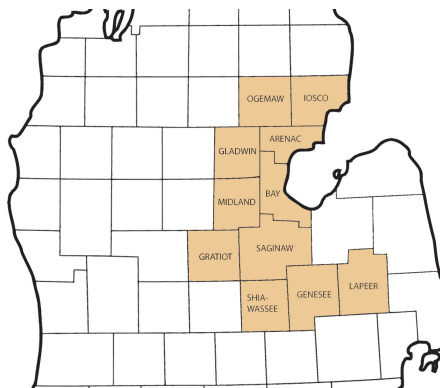
Property Damage Only (PDO)



Michigan State Police (MSP) Traffic Safety Network Saginaw Valley

2015 Traffic Crash Data & 2011-2015 5-Year Trends

Traffic Safety Network Saginaw Valley is comprised of Arenac, Bay, Genesee, Gladwin, Gratiot, Iosco, Lapeer, Midland, Ogemaw, Saginaw, and Shiawassee counties. Trend tables for this report are based on those counties.



Sources:

The crashes in this report occurred on public roadways in Michigan and resulted in injuries, fatalities, or property damage (with \$1,000 as a reporting threshold). The information was gathered from Michigan Traffic Crash Report Forms (UD-10) submitted by local police departments, sheriff's offices, and the Michigan State Police. Other related information was obtained from the departments of Transportation, State, and Community Health.

This page left intentionally blank

TSN Saginaw Valley Experience

In 2015:

There were 47,015 drivers involved in 29,980 motor vehicle crashes in MSP Traffic Safety Network Saginaw Valley. Of those crashes, 109 were classified as fatal, resulting in 118 fatalities. An additional 7,669 persons were injured.

Traffic Safety Network Saginaw Valley experienced the highest number of motor vehicle crashes (3,651) in November, the highest number of fatal crashes (14) and the highest number of persons killed (17) in July.

Michigan driver statistics indicate 6.6 percent of licensed drivers in Traffic Safety Network Saginaw Valley were age 16-20, and 11.9 percent of drivers in crashes were also in that age group.

2015 - Crashes and Injuries by Month

Month	Crashes				Persons	
	Total	Fatal	Injury	Property Damage Only (PDO)	Fatalities	Injuries
January	3,195	6	513	2,676	7	701
February	2,397	2	393	2,002	2	519
March	2,082	5	342	1,735	5	462
April	1,882	7	357	1,518	7	499
May	2,315	13	486	1,816	14	714
June	2,349	10	463	1,876	11	655
July	2,065	14	486	1,565	17	664
August	1,957	8	484	1,465	8	678
September	2,245	13	496	1,736	14	694
October	3,136	11	515	2,610	12	770
November	3,651	11	487	3,153	12	675
December	2,706	9	451	2,246	9	638
Total	29,980	109	5,473	24,398	118	7,669

2015 - Driver Statistics

Age Group	Statewide			Driver Rates	
	2015 Population	Licensed Drivers	Drivers in Crashes	Per 10k Population	Per 10k Licensed
0 - 15	1,938,950	52,553	89	0.5	16.9
16 - 20	675,253	474,427	5,588	82.8	117.8
21 - 24	580,519	480,600	4,471	77.0	93.0
25 - 64	5,157,183	4,760,526	28,557	55.4	60.0
65 +	1,570,671	1,390,210	5,404	34.4	38.9
Unknown	--	--	2,906	--	--
Total	9,922,576	7,158,316	47,015	47.4	65.7

2015 - Vehicles in Crashes

Vehicle Type	Motor Vehicles		Fatal Crashes		Injury Crashes	PDO Crashes
	Number of Vehicles	% of Total	Number	% of Total	Number	Number
Passenger car & station wagon	35,112	74.7	97	56.7	7,107	27,908
Van & motorhome	1,910	4.1	3	1.8	405	1,502
Pickup truck	7,396	15.7	38	22.2	1,368	5,990
Small truck under 10,000 lbs. GVWR	702	1.5	2	1.2	162	538
Cycle	343	0.7	20	11.7	241	82
Moped	44	0.1	1	0.6	37	6
Go Cart	4	0.0	0	0.0	3	1
Snowmobile	6	0.0	0	0.0	4	2
Off-Road Vehicle (ORV) & All-Terrain Vehicle (ATV)	27	0.1	1	0.6	21	5
Other	126	0.3	1	0.6	29	96
Truck/bus over 10,000 lbs.	907	1.9	7	4.1	189	711
Unknown	438	0.9	1	0.6	28	409
Total	47,015	100.0	171	100.0	9,594	37,250

MSP Traffic Safety Network Saginaw Valley (continued)

5-Year Trend - Crashes by Month

Month	2011		2012		2013		2014		2015	
	Total Crashes	Fatal Crashes	Total Crashes	Fatal Crashes	Total Crashes	Fatal Crashes	Total Crashes	Fatal Crashes	Total Crashes	Fatal Crashes
January	3,286	8	3,068	3	2,886	8	3,599	5	3,195	6
February	2,848	6	2,640	5	2,628	8	2,623	8	2,397	2
March	2,379	9	1,930	14	2,231	6	2,407	5	2,082	5
April	1,954	9	1,809	5	2,000	6	1,824	4	1,882	7
May	2,140	10	2,243	9	2,280	11	2,134	5	2,315	13
June	2,438	10	2,173	12	2,177	5	2,252	13	2,349	10
July	2,213	11	1,982	11	1,999	9	1,926	6	2,065	14
August	2,043	16	1,924	10	1,961	8	1,895	10	1,957	8
September	2,296	9	2,201	12	2,200	12	2,142	6	2,245	13
October	3,091	15	2,895	14	2,844	9	3,021	5	3,136	11
November	3,518	11	3,017	7	3,485	7	3,578	7	3,651	11
December	2,994	10	2,829	7	3,519	6	2,380	6	2,706	9
Total	31,200	124	28,711	109	30,210	95	29,781	80	29,980	109

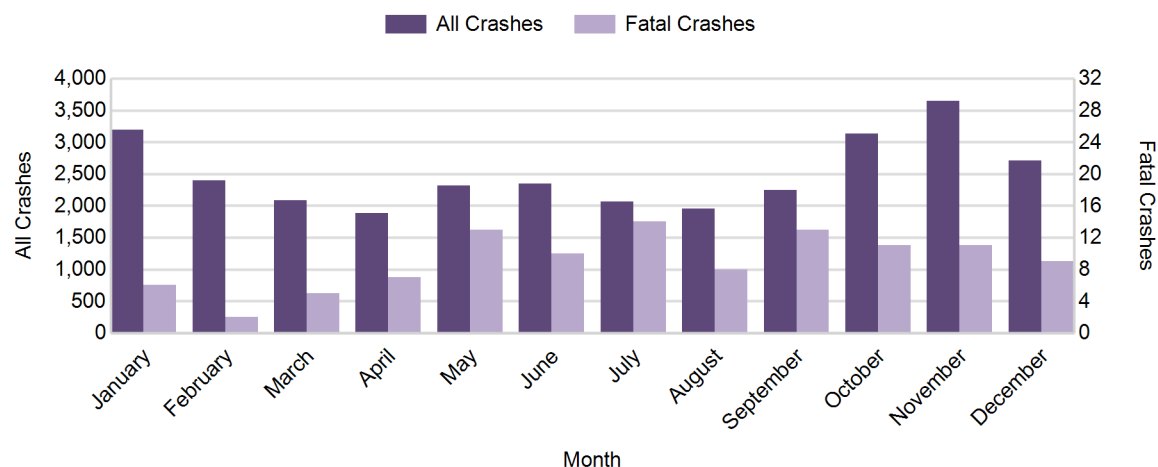
Note: † Indicates that the highest number of total crashes reported in the 5-year period occurred in the same month

5-Year Trend - Crashes by Day of Week

Day	2011		2012		2013		2014		2015	
	Total Crashes	Fatal Crashes	Total Crashes	Fatal Crashes	Total Crashes	Fatal Crashes	Total Crashes	Fatal Crashes	Total Crashes	Fatal Crashes
Monday	4,432	13	3,922	11	4,451	13	4,042	7	4,303	15
Tuesday	4,894	20	4,003	13	4,472	9	4,404	10	4,525	17
Wednesday	4,552	10	3,944	8	4,436	10	4,740	10	4,522	11
Thursday	4,481	19	4,143	14	4,674	11	4,899	9	4,410	8
Friday	5,094 †	16	5,600 †	22	4,808 †	15	4,914 †	9	4,752 †	24
Saturday	4,291	24	3,748	22	4,000	24	3,589	19	4,172	22
Sunday	3,456	22	3,351	19	3,369	13	3,193	16	3,296	12
Total	31,200	124	28,711	109	30,210	95	29,781	80	29,980	109

Note: † Indicates that the highest number of total crashes reported in the 5-year period occurred on the same day of the week

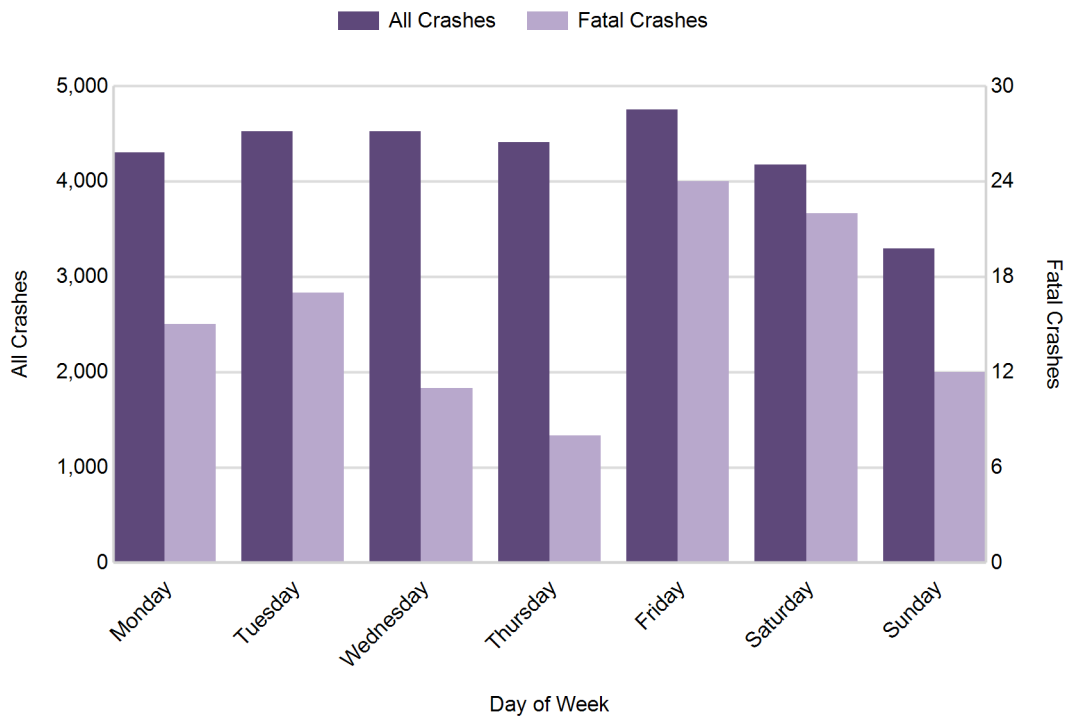
2015 Crashes by Month



2015 - Crashes by Day of Week

Day	All Crashes		Fatal Crashes		Injury Crashes			PDO Crashes
	Number	% of Total	Number	% of Fatal	A	B	C	Number
Monday	4,303	14.4	15	13.8	53	201	527	3,507
Tuesday	4,525	15.1	17	15.6	45	172	524	3,767
Wednesday	4,522	15.1	11	10.1	60	194	584	3,673
Thursday	4,410	14.7	8	7.3	59	190	542	3,611
Friday	4,752	15.9	24	22.0	63	186	608	3,871
Saturday	4,172	13.9	22	20.2	71	208	524	3,347
Sunday	3,296	11.0	12	11.0	56	185	421	2,622
Total	29,980	100.0	109	100.0	407	1,336	3,730	24,398

2015 Day of Week and Severity

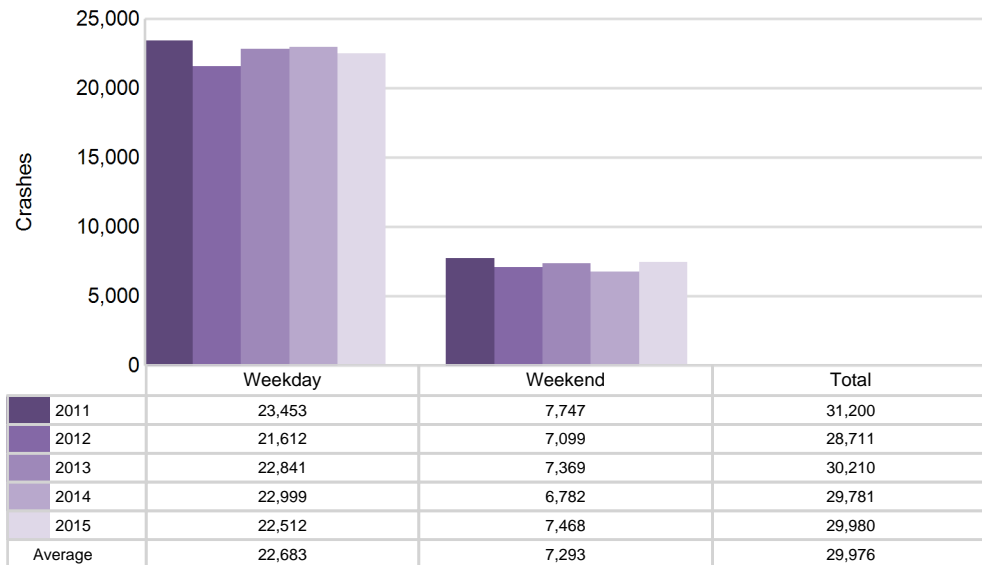


MSP Traffic Safety Network Saginaw Valley (continued)

5-Year Trend - Crashes by Weekday and Weekend

Portion of Week	2011		2012		2013		2014		2015	
	Total Crashes	Fatal Crashes	Total Crashes	Fatal Crashes	Total Crashes	Fatal Crashes	Total Crashes	Fatal Crashes	Total Crashes	Fatal Crashes
Weekday	23,453	78	21,612	68	22,841	58	22,999	45	22,512	75
Weekend	7,747	46	7,099	41	7,369	37	6,782	35	7,468	34
Total	31,200	124	28,711	109	30,210	95	29,781	80	29,980	109

5-Year Crash Trends by Weekday (Monday - Friday) and Weekend (Saturday & Sunday)



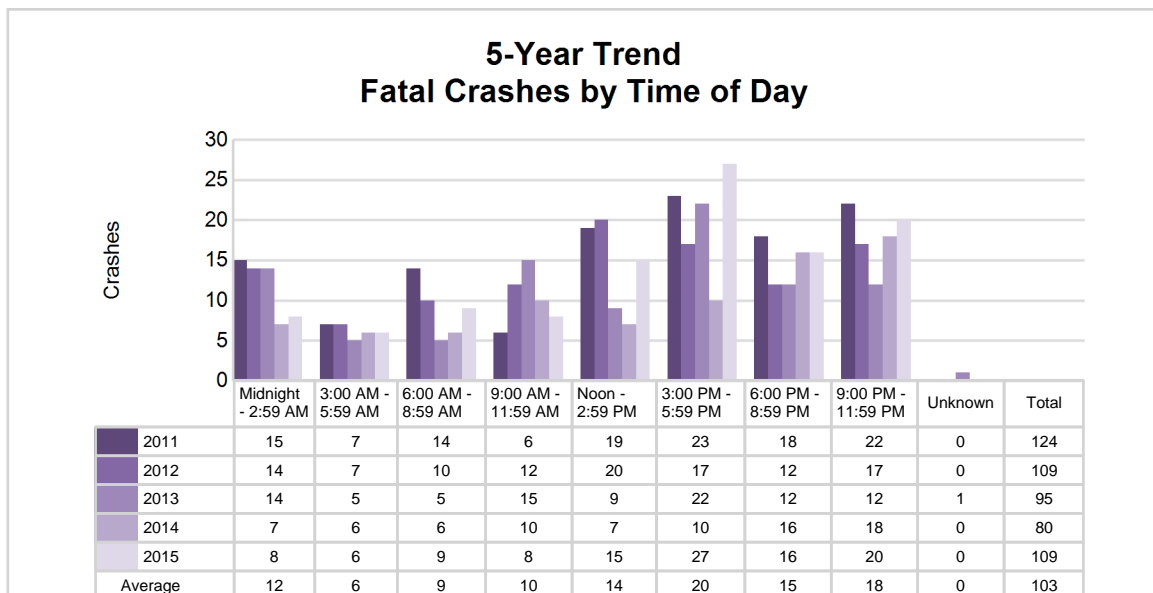
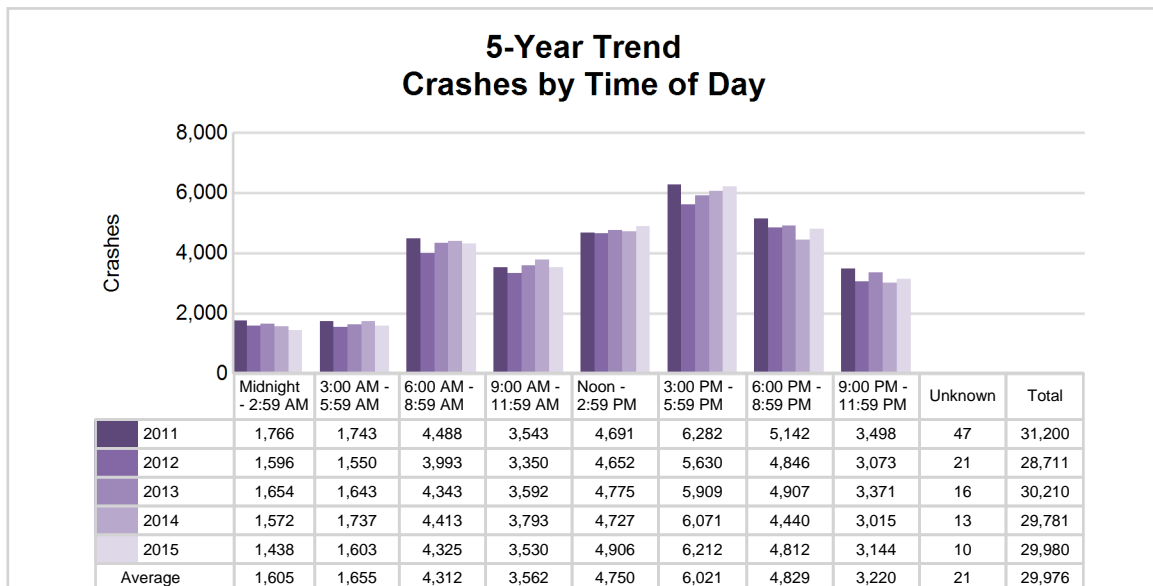
MSP Traffic Safety Network Saginaw Valley (continued)

5

5-Year Trend - Crashes by Time of Day

Time of Day	2011		2012		2013		2014		2015	
	Total Crashes	Fatal Crashes	Total Crashes	Fatal Crashes	Total Crashes	Fatal Crashes	Total Crashes	Fatal Crashes	Total Crashes	Fatal Crashes
Midnight - 2:59 AM	1,766	15	1,596	14	1,654	14	1,572	7	1,438	8
3:00 AM - 5:59 AM	1,743	7	1,550	7	1,643	5	1,737	6	1,603	6
6:00 AM - 8:59 AM	4,488	14	3,993	10	4,343	5	4,413	6	4,325	9
9:00 AM - 11:59 AM	3,543	6	3,350	12	3,592	15	3,793	10	3,530	8
Noon - 2:59 PM	4,691	19	4,652	20	4,775	9	4,727	7	4,906	15
3:00 PM - 5:59 PM	6,282 †	23	5,630 †	17	5,909 †	22	6,071 †	10	6,212 †	27
6:00 PM - 8:59 PM	5,142	18	4,846	12	4,907	12	4,440	16	4,812	16
9:00 PM - 11:59 PM	3,498	22	3,073	17	3,371	12	3,015	18	3,144	20
Unknown	47	0	21	0	16	1	13	0	10	0
Total	31,200	124	28,711	109	30,210	95	29,781	80	29,980	109

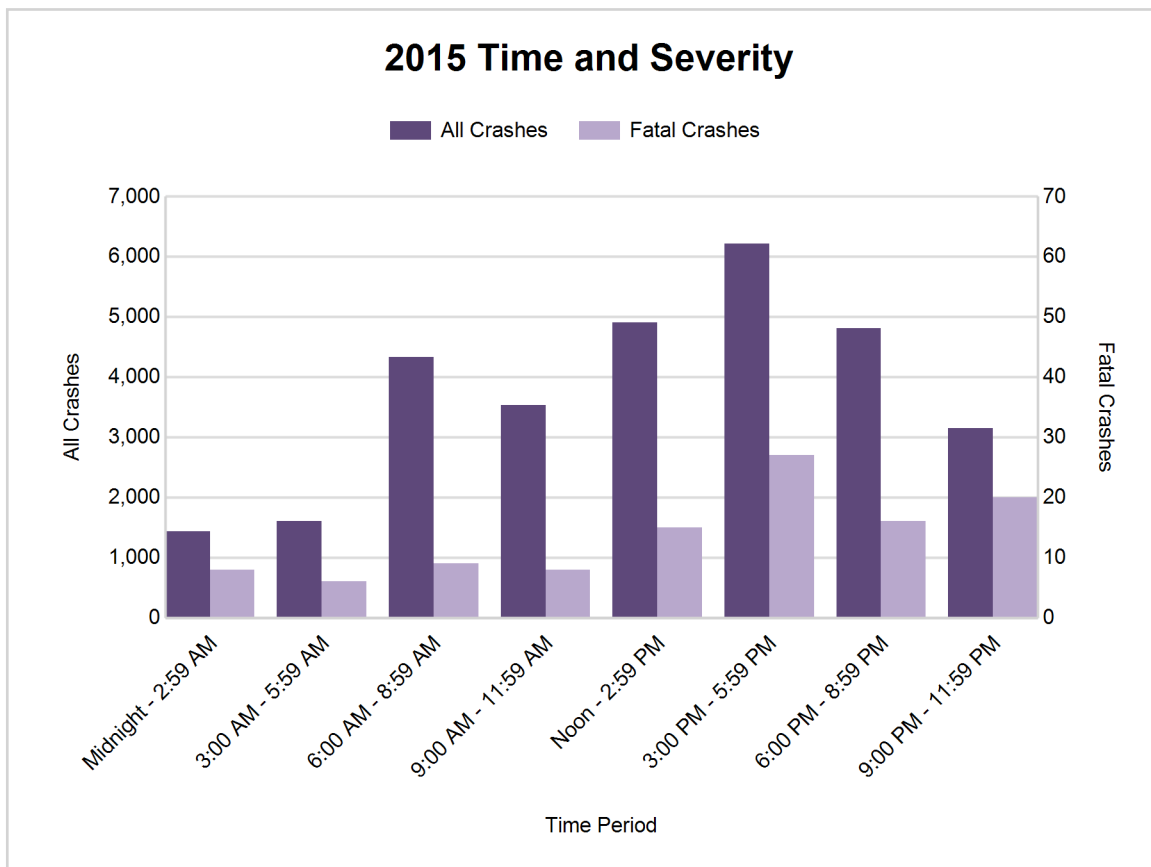
Note: † Indicates that the highest number of total crashes reported in the 5-year period occurred in the same time period



MSP Traffic Safety Network Saginaw Valley (continued)

2015 - Time and Severity

Time of Day	All Crashes		Fatal Crashes		Injury Crashes			PDO Crashes
	Number	% of Total	Number	% of Fatal	A	B	C	Number
Midnight - 2:59 AM	1,438	4.8	8	7.3	33	75	153	1,169
3:00 AM - 5:59 AM	1,603	5.3	6	5.5	19	63	106	1,409
6:00 AM - 8:59 AM	4,325	14.4	9	8.3	46	153	412	3,705
9:00 AM - 11:59 AM	3,530	11.8	8	7.3	38	185	530	2,769
Noon - 2:59 PM	4,906	16.4	15	13.8	78	220	780	3,813
3:00 PM - 5:59 PM	6,212	20.7	27	24.8	90	322	970	4,803
6:00 PM - 8:59 PM	4,812	16.1	16	14.7	52	206	483	4,055
9:00 PM - 11:59 PM	3,144	10.5	20	18.3	50	112	296	2,666
Unknown	10	0.0	0	0.0	1	0	0	9
Total	29,980	100.0	109	100.0	407	1,336	3,730	24,398

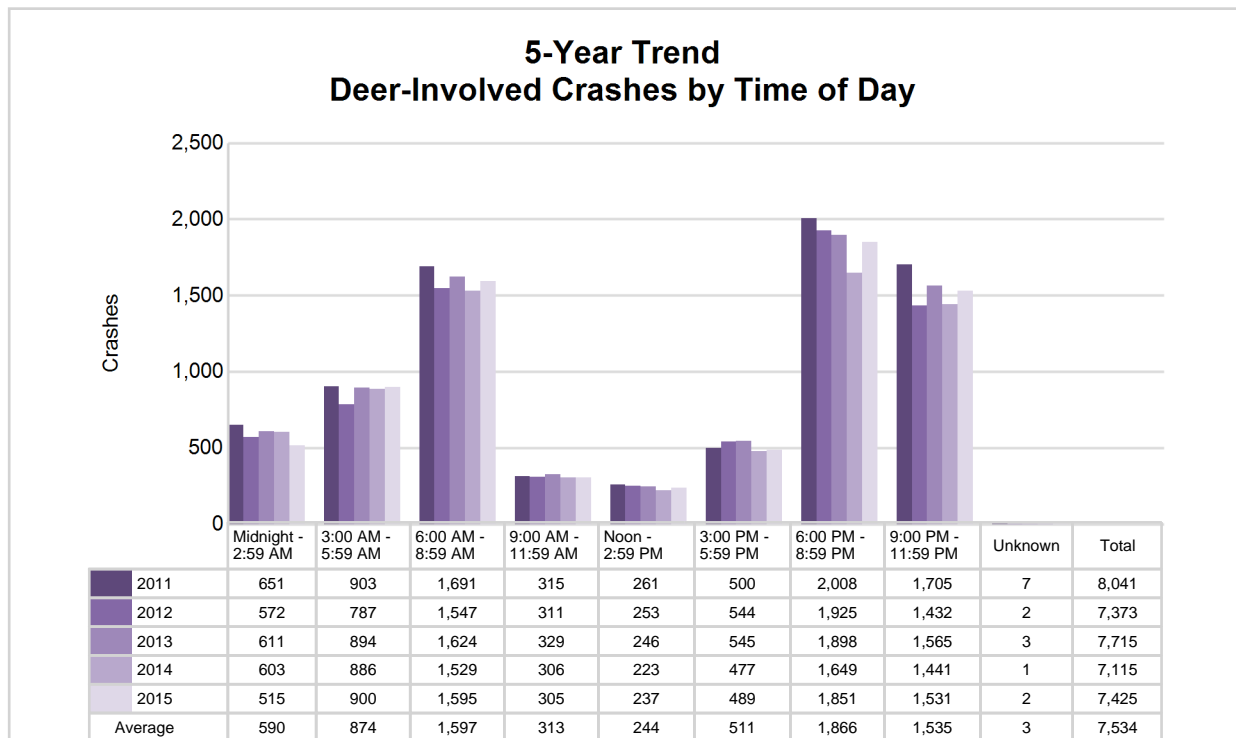


MSP Traffic Safety Network Saginaw Valley (continued)

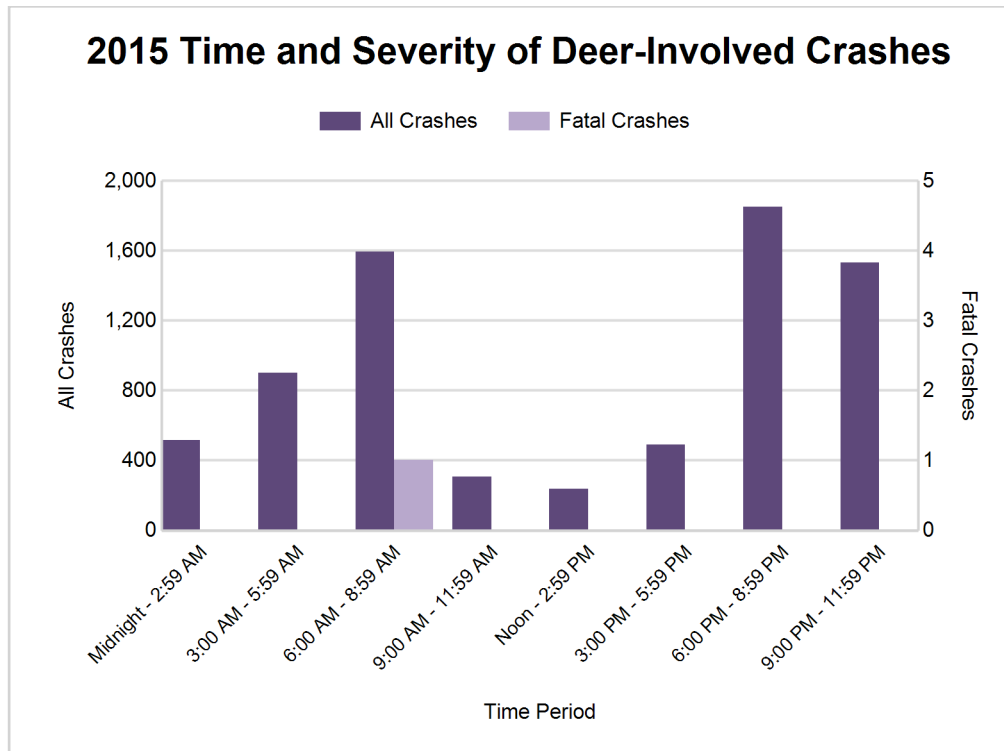
5-Year Trend - Deer-Involved Crashes by Time of Day

Time of Day	2011		2012		2013		2014		2015	
	Total Crashes	Fatal Crashes	Total Crashes	Fatal Crashes	Total Crashes	Fatal Crashes	Total Crashes	Fatal Crashes	Total Crashes	Fatal Crashes
Midnight - 2:59 AM	651	0	572	1	611	0	603	1	515	0
3:00 AM - 5:59 AM	903	1	787	0	894	0	886	0	900	0
6:00 AM - 8:59 AM	1,691	0	1,547	0	1,624	0	1,529	0	1,595	1
9:00 AM - 11:59 AM	315	0	311	0	329	0	306	0	305	0
Noon - 2:59 PM	261	0	253	0	246	0	223	0	237	0
3:00 PM - 5:59 PM	500	0	544	2	545	0	477	0	489	0
6:00 PM - 8:59 PM	2,008 †	0	1,925 †	0	1,898 †	0	1,649 †	0	1,851 †	0
9:00 PM - 11:59 PM	1,705	0	1,432	0	1,565	0	1,441	1	1,531	0
Unknown	7	0	2	0	3	0	1	0	2	0
Total	8,041	1	7,373	3	7,715	0	7,115	2	7,425	1

Note: † Indicates that the highest number of total crashes reported in the 5-year period occurred in the same time period



MSP Traffic Safety Network Saginaw Valley (continued)



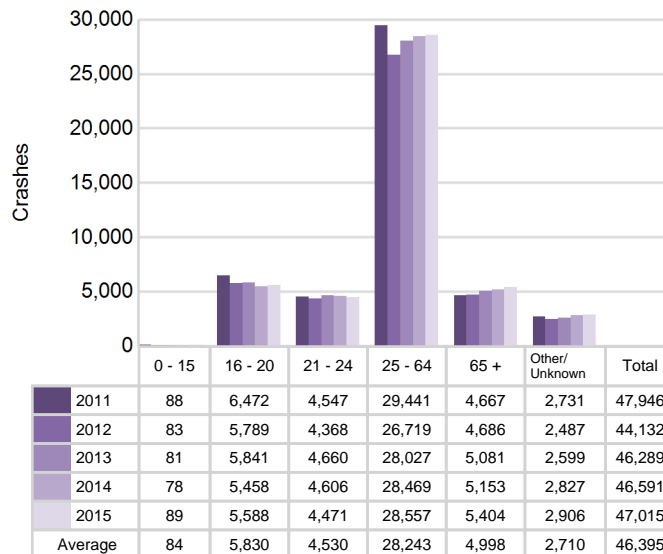
2015 - Reported Motor Vehicle Crashes by County

County	Crashes											Persons	
	Total	Fatal	Injury	Property Damage	Inter-state	US Route	State Route	Local Street	Alcohol-Involved	Drug-Involved	Deer-Involved	Fatalities	Injuries
Arenac	647	2	80	565	97	159	90	301	11	2	391	2	106
Bay	2,909	15	517	2,377	257	148	1,024	1,480	113	21	485	15	706
Genesee	10,235	28	2,256	7,951	1,837	406	1,408	6,584	349	104	1,037	32	3,156
Gladwin	681	6	79	596	0	0	281	400	24	4	372	6	117
Gratiot	1,518	7	180	1,331	0	391	263	864	38	6	801	8	240
Iosco	541	3	109	429	0	138	105	298	19	3	198	3	149
Lapeer	2,929	8	425	2,496	215	0	819	1,895	78	24	1,230	8	583
Midland	2,528	7	363	2,158	0	324	400	1,804	70	16	828	9	531
Ogemaw	779	5	105	669	131	0	250	398	21	8	418	5	154
Saginaw	5,316	20	1,041	4,255	537	0	1,880	2,899	200	43	882	22	1,494
Shiawassee	1,897	8	318	1,571	220	0	576	1,101	79	12	783	8	433
Total	29,980	109	5,473	24,398	3,294	1,566	7,096	18,024	1,002	243	7,425	118	7,669

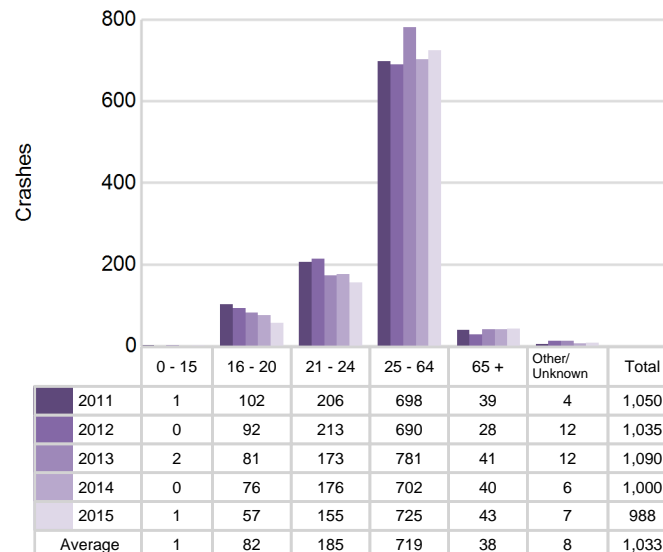
5-Year Trend - Drivers in Crashes Coded Drinking by Driver Age

Driver Age	2011		2012		2013		2014		2015	
	Total Drivers in Crashes	Total Drivers Coded Drinking	Total Drivers in Crashes	Total Drivers Coded Drinking	Total Drivers in Crashes	Total Drivers Coded Drinking	Total Drivers in Crashes	Total Drivers Coded Drinking	Total Drivers in Crashes	Total Drivers Coded Drinking
0 - 15	88	1	83	0	81	2	78	0	89	1
16 - 20	6,472	102	5,789	92	5,841	81	5,458	76	5,588	57
21 - 24	4,547	206	4,368	213	4,660	173	4,606	176	4,471	155
25 - 64	29,441	698	26,719	690	28,027	781	28,469	702	28,557	725
65 +	4,667	39	4,686	28	5,081	41	5,153	40	5,404	43
Unknown	2,731	4	2,487	12	2,599	12	2,827	6	2,906	7
Total	47,946	1,050	44,132	1,035	46,289	1,090	46,591	1,000	47,015	988

**5-Year Trend
Total Drivers in Crashes by Age**



**5-Year Trend
Total Drivers Coded Drinking by Age**



MSP Traffic Safety Network Saginaw Valley (continued)

2015 - Bodily Alcohol Concentration (BAC) Results Among All Vehicle Drivers in Alcohol-Involved Crashes by Age

Age Group	Drivers				BAC Result Range for Drivers Coded Drinking				
	Total Drivers in Alcohol-Involved Crashes	Total Drivers Tested in all Crashes	Total Drivers Coded Drinking, Tested	Total Drivers Coded Drinking	BAC = 0.00	BAC 0.01 g/dL to 0.07 g/dL	BAC 0.08 g/dL to 0.16 g/dL	BAC 0.17 g/dL and Above	BAC Not Reported
0 - 15	3	1	1	1	0	1	0	0	0
16 - 20	92	81	46	57	0	6	19	8	24
21 - 24	183	160	132	155	0	15	40	32	68
25 - 64	981	811	613	725	6	53	160	220	286
65 +	69	68	35	43	0	3	10	11	19
Unknown	83	2	0	7	0	0	0	0	7
Total	1,411	1,123	827	988	6	78	229	271	404

Notes: BAC measured in grams (g) per deciliter (dL).

BAC may not be reported if drivers are not tested or if the results are not available immediately (as in the case of a blood test).

A driver may be coded by the officer as drinking even though no test is administered.

Alcohol-Involved Crashes

In 2015, there were 1,411 drivers in alcohol-involved crashes; 988 (70.0%) of those drivers were coded as had-been-drinking by the officer on the crash form.

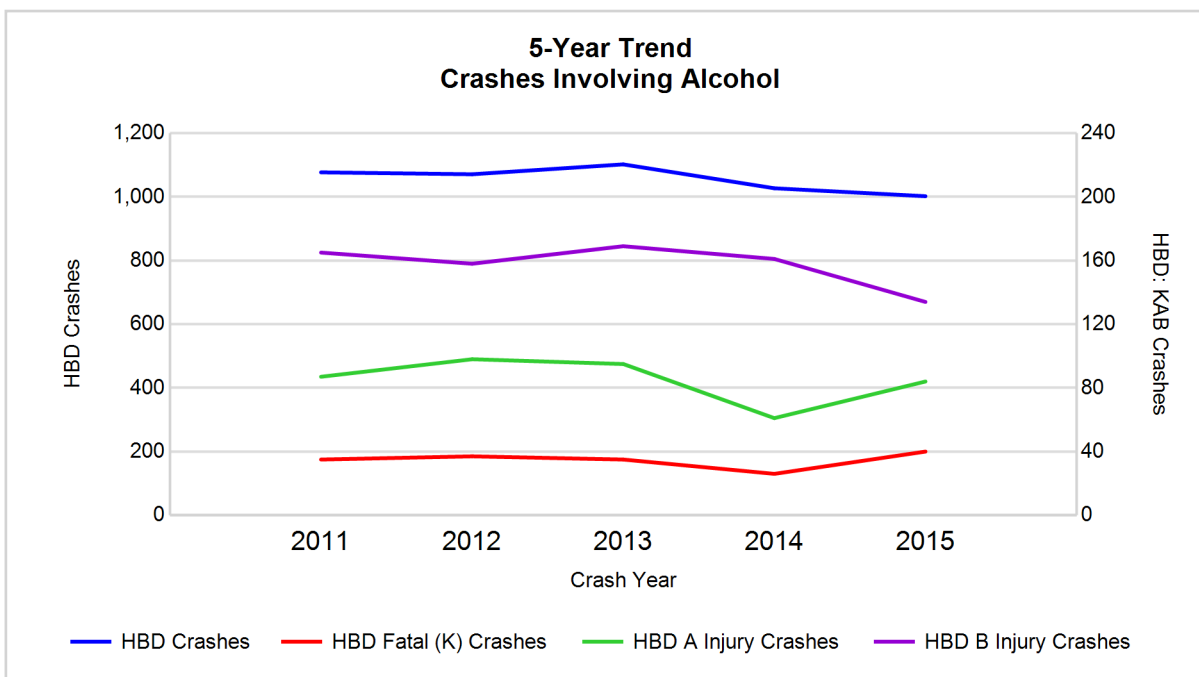
- 500 (50.6%) of the 988 drivers had a blood alcohol concentration (BAC) of 0.08 g/dL (grams per deciliter) or greater, and 271 (54.2%) of the 500 drivers had a BAC at or above 0.17 g/dL.
- 827 (83.7%) of the 988 drivers were coded as had-been-drinking and were tested for alcohol consumption.

5-Year Trend - Crashes Involving Alcohol

Year	All Crashes	HBD Crashes	% HBD	Fatal Crashes	HBD Fatal Crashes	% HBD	A Injury Crashes	HBD A Injury Crashes	% HBD	B Injury Crashes	HBD B Injury Crashes	% HBD
2011	31,200	1,077	3.5	124	35	28.2	482	87	18.0	1,470	165	11.2
2012	28,711	1,071	3.7	109	37	33.9	467	98	21.0	1,283	158	12.3
2013	30,210	1,102	3.6	95	35	36.8	475	95	20.0	1,298	169	13.0
2014	29,781	1,027	3.4	80	26	32.5	381	61	16.0	1,185	161	13.6
2015	29,980	1,002*	3.3*	109	40**	36.7	407	84	20.6	1,336	134*	10.0*

Note: * Indicates that the most recent year is the lowest number or percentage reported in the 5-year period in that column

** Indicates that the most recent year is the highest number or percentage reported in the 5-year period in that column



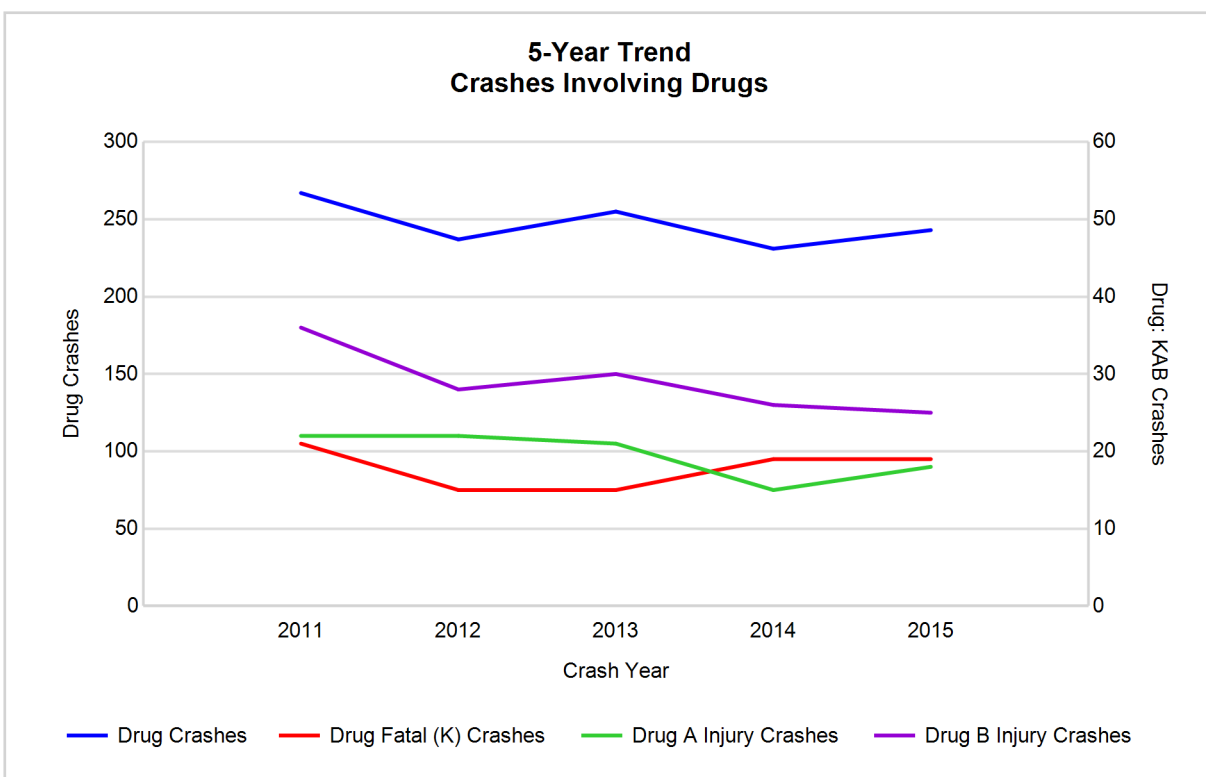
Note: Had-Been-Drinking (HBD)

5-Year Trend - Crashes Involving Drugs

Year	All Crashes	Drug Crashes	% Drug	Fatal Crashes	Drug Fatal Crashes	% Drug	A Injury Crashes	Drug A Injury Crashes	% Drug	B Injury Crashes	Drug B Injury Crashes	% Drug
2011	31,200	267	0.9	124	21	16.9	482	22	4.6	1,470	36	2.4
2012	28,711	237	0.8	109	15	13.8	467	22	4.7	1,283	28	2.2
2013	30,210	255	0.8	95	15	15.8	475	21	4.4	1,298	30	2.3
2014	29,781	231	0.8	80	19	23.8	381	15	3.9	1,185	26	2.2
2015	29,980	243	0.8	109	19	17.4	407	18	4.4	1,336	25*	1.9*

Note: * Indicates that the most recent year is the lowest number or percentage reported in the 5-year period in that column

** Indicates that the most recent year is the highest number or percentage reported in the 5-year period in that column



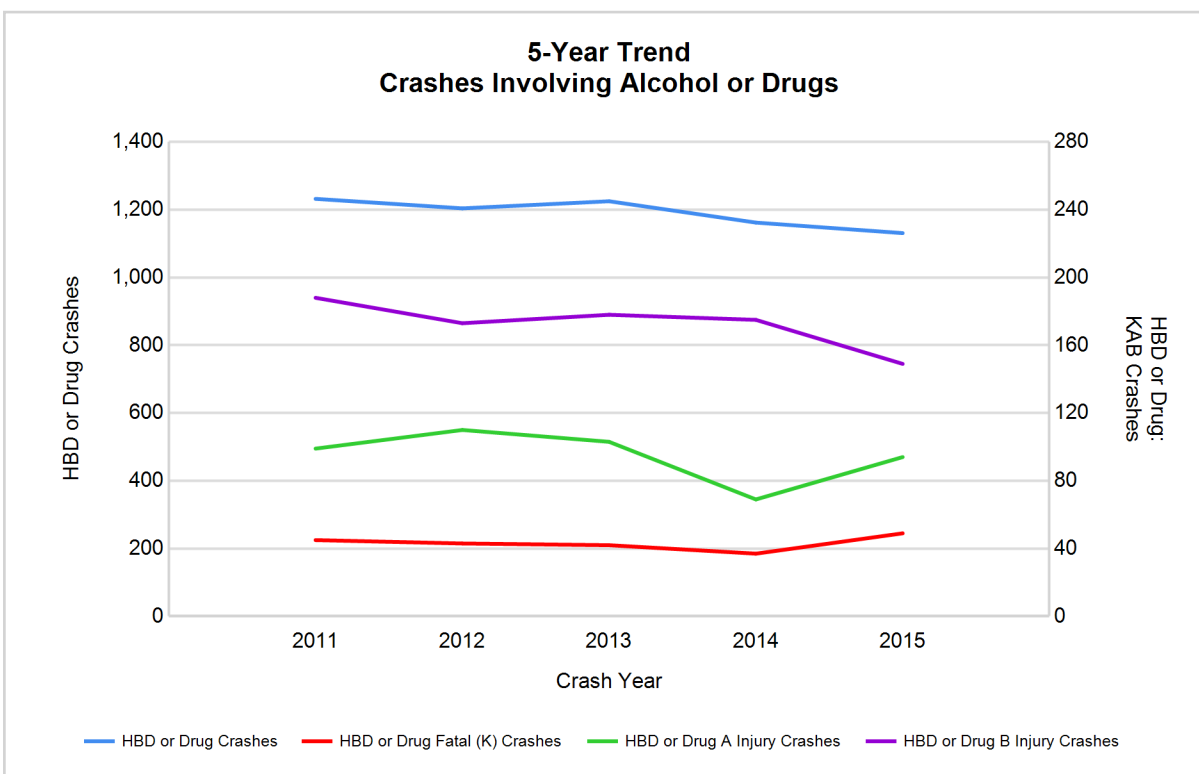
MSP Traffic Safety Network Saginaw Valley (continued)

5-Year Trend - Crashes Involving Alcohol or Drugs

Year	All Crashes	HBD or Drug Crashes	% HBD or Drug	Fatal Crashes	HBD or Drug Fatal Crashes	% HBD or Drug	A Injury Crashes	HBD or Drug A Injury Crashes	% HBD or Drug	B Injury Crashes	HBD or Drug B Injury Crashes	% HBD or Drug
2011	31,200	1,232	3.9	124	45	36.3	482	99	20.5	1,470	188	12.8
2012	28,711	1,204	4.2	109	43	39.4	467	110	23.6	1,283	173	13.5
2013	30,210	1,225	4.1	95	42	44.2	475	103	21.7	1,298	178	13.7
2014	29,781	1,162	3.9	80	37	46.3	381	69	18.1	1,185	175	14.8
2015	29,980	1,131*	3.8*	109	49**	45.0	407	94	23.1	1,336	149*	11.2*

Note: * Indicates that the most recent year is the lowest number or percentage reported in the 5-year period in that column

** Indicates that the most recent year is the highest number or percentage reported in the 5-year period in that column



Note: Had-Been-Drinking (HBD)

2015 - Restraints Worn Among Vehicle Drivers and Injured Passengers by Vehicle Type

Vehicle Type	Total Occupants			Fatalities			A - Incapacitating			B - Non-incapacitating			C - Possible Injury			No Injury		
	Total	Used Restraint	%	Total	Used Restraint	%	Total	Used Restraint	%	Total	Used Restraint	%	Total	Used Restraint	%	Total	Used Restraint	%
Passenger car & station wagon	36,756	33,598	91.4	63	34	54.0	316	223	70.6	1,110	969	87.3	4,288	4,029	94.0	29,396	28,313	96.3
Van & motorhome	2,024	1,862	92.0	1	1	100.0	14	11	78.6	60	54	90.0	239	224	93.7	1,641	1,572	95.8
Pickup truck	7,640	6,928	90.7	13	2	15.4	49	32	65.3	229	195	85.2	544	499	91.7	6,430	6,195	96.3
Small truck under 10,000 lbs. GVWR	742	659	88.8	2	0	0.0	8	5	62.5	31	27	87.1	95	91	95.8	560	536	95.7
Cycle	374	228	61.0	19	6	31.6	60	34	56.7	104	64	61.5	98	67	68.4	88	57	64.8
Moped	46	10	21.7	1	0	0.0	6	3	50.0	23	4	17.4	9	3	33.3	7	0	0.0
Go Cart	5	1	20.0	0	0	0.0	0	0	0.0	1	0	0.0	1	0	0.0	3	1	33.3
Snowmobile	6	4	66.7	0	0	0.0	0	0	0.0	1	1	100.0	2	2	100.0	2	1	50.0
Off-Road Vehicle (ORV) & All-Terrain Vehicle (ATV)	33	13	39.4	1	0	0.0	4	2	50.0	12	4	33.3	9	5	55.6	7	2	28.6
Other	127	62	48.8	1	0	0.0	5	0	0.0	5	1	20.0	5	2	40.0	96	59	61.5
Truck/bus over 10,000 lbs.	930	847	91.1	0	0	0.0	6	4	66.7	19	12	63.2	41	29	70.7	839	802	95.6
Unknown	440	7	1.6	0	0	0.0	0	0	0.0	0	0	0.0	2	2	100.0	15	2	13.3
Total	49,123	44,219	90.0	101	43	42.6	468	314	67.1	1,595	1,331	83.4	5,333	4,953	92.9	39,084	37,540	96.0

Note: Restraint Use includes shoulder belt only used, lap belt only used, both lap and shoulder belts used, child restraint used, restraint failure, and helmet worn.

2015 - Restraints Worn Among Vehicle Drivers and Injured Passengers by Age

Age Group	Total Occupants			Fatalities			A - Incapacitating			B - Non-incapacitating			C - Possible Injury			No Injury		
	Total	Used Restraint	%	Total	Used Restraint	%	Total	Used Restraint	%	Total	Used Restraint	%	Total	Used Restraint	%	Total	Used Restraint	%
0 - 15	628	540	86.0	6	2	33.3	28	14	50.0	124	101	81.5	402	363	90.3	67	59	88.1
16 - 20	5,950	5,690	95.6	8	3	37.5	49	35	71.4	277	229	82.7	735	668	90.9	4,875	4,753	97.5
21 - 24	4,640	4,375	94.3	6	1	16.7	56	33	58.9	161	135	83.9	512	468	91.4	3,899	3,738	95.9
25 - 64	29,335	28,059	95.7	61	25	41.0	262	172	65.6	819	674	82.3	2,991	2,791	93.3	25,168	24,392	96.9
65 +	5,664	5,484	96.8	20	12	60.0	73	60	82.2	211	192	91.0	682	662	97.1	4,674	4,558	97.5
Unknown	2,906	71	2.4	0	0	0.0	0	0	0.0	3	0	0.0	11	1	9.1	401	40	10.0
Total	49,123	44,219	90.0	101	43	42.6	468	314	67.1	1,595	1,331	83.4	5,333	4,953	92.9	39,084	37,540	96.0

Note: Restraint Use includes shoulder belt only used, lap belt only used, both lap and shoulder belts used, child restraint used, restraint failure, and helmet worn.

MSP Traffic Safety Network Saginaw Valley (continued)

5-Year Trend - Restraint Use Among Drivers

Restraint Use	2011			2012			2013			2014			2015		
	Drivers	Fatal Drivers	Injured Drivers	Drivers	Fatal Drivers	Injured Drivers	Drivers	Fatal Drivers	Injured Drivers	Drivers	Fatal Drivers	Injured Drivers	Drivers	Fatal Drivers	Injured Drivers
No belts available	342	0	72	330	1	58	314	0	65	414	2	52	294	3	52
Shoulder belt only used	24	1	4	95	0	33	113	1	10	80	0	7	42	0	5
Lap belt only used	157	0	16	112	0	15	148	0	15	225	1	20	297	0	32
Both lap & shoulder belts used	42,878	38	4,952	39,415	42	4,538	41,550	21	4,563	41,450	25	4,331	41,834	27	4,617
No belts used	390	28	175	367	25	169	317	18	156	357	18	135	410	23	176
Child restraint used	2	0	0	1	0	0	2	0	0	0	0	0	1	0	0
Child restraint not used, unavailable or improper use	7	0	0	3	0	1	1	0	0	2	0	0	1	0	0
Restraint failure	13	1	2	13	0	1	10	0	4	20	0	5	23	0	1
Restraint use unknown	1,981	4	179	1,856	4	212	1,864	6	162	1,718	2	143	1,588	5	139
Helmet worn	345	11	254	300	6	213	262	9	177	231	3	164	234	6	165
Helmet not worn	39	2	34	136	6	111	138	8	108	137	6	103	150	13	107
Helmet use unknown	12	0	8	25	1	14	16	0	7	18	3	8	33	2	12
Uncoded & errors	1,756	0	18	1,479	0	13	1,554	0	7	1,939	0	3	2,108	0	4
Total	47,946	85	5,714	44,132	85	5,378	46,289	63	5,274	46,591	60	4,971	47,015	79	5,310

5-Year Trend - Restraint Use Among Drivers Coded Drinking

Restraint Use	2011			2012			2013			2014			2015		
	Drivers	Fatal Drivers	Injured Drivers	Drivers	Fatal Drivers	Injured Drivers	Drivers	Fatal Drivers	Injured Drivers	Drivers	Fatal Drivers	Injured Drivers	Drivers	Fatal Drivers	Injured Drivers
No belts available	13	0	7	10	1	7	17	0	10	12	0	5	9	1	7
Shoulder belt only used	2	0	2	0	0	0	8	0	1	0	0	0	0	0	0
Lap belt only used	1	0	0	2	0	2	2	0	0	5	0	3	7	0	3
Both lap & shoulder belts used	751	7	233	727	8	202	775	1	219	705	3	184	712	6	178
No belts used	86	11	55	85	7	58	69	11	41	70	7	40	78	9	53
Child restraint used	0	0	0	0	0	0	0	0	0	0	0	0	0	0	0
Child restraint not used, unavailable or improper use	0	0	0	0	0	0	0	0	0	0	0	0	0	0	0
Restraint failure	0	0	0	0	0	0	0	0	0	1	0	1	1	0	0
Restraint use unknown	157	1	49	159	2	54	165	2	43	174	1	51	134	3	38
Helmet worn	26	3	18	16	1	13	19	3	16	8	0	4	13	2	10
Helmet not worn	11	1	10	23	1	21	29	4	22	21	3	15	27	7	19
Helmet use unknown	0	0	0	5	0	5	2	0	2	1	0	1	3	0	3
Uncoded & errors	3	0	0	8	0	1	4	0	0	3	0	0	4	0	1
Total	1,050	23	374	1,035	20	363	1,090	21	354	1,000	14	304	988	28	312

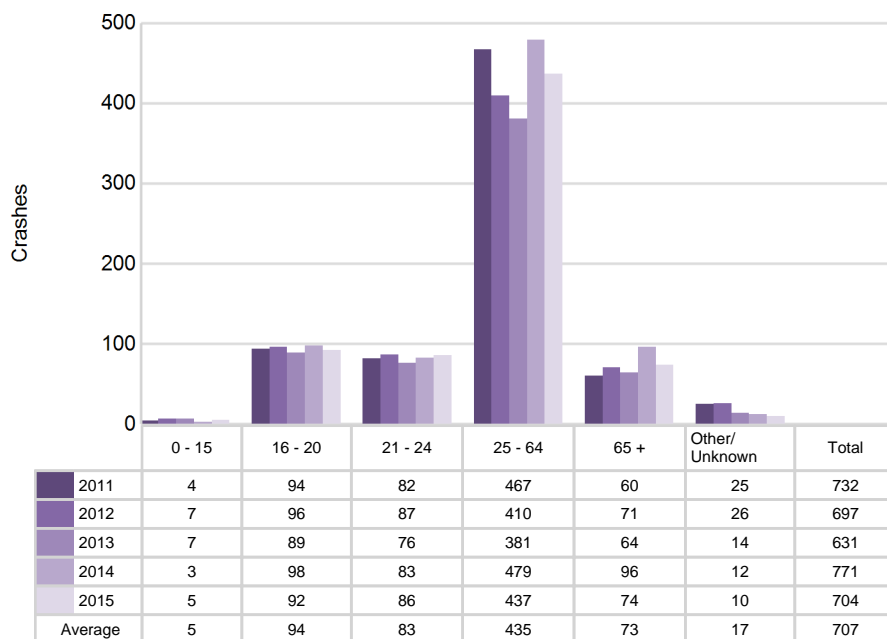
MSP Traffic Safety Network Saginaw Valley (continued)

5-Year Trend - Seatbelt Not Used Among Drivers by Age

Age Group	2011			2012			2013			2014			2015		
	Drivers	Fatal Drivers	Injured Drivers	Drivers	Fatal Drivers	Injured Drivers	Drivers	Fatal Drivers	Injured Drivers	Drivers	Fatal Drivers	Injured Drivers	Drivers	Fatal Drivers	Injured Drivers
0 - 15	4	0	2	7	0	3	7	0	2	3	1	1	5	1	4
16 - 20	94	3	40	96	3	37	89	1	37	98	3	26	92	3	30
21 - 24	82	2	36	87	4	35	76	1	28	83	1	25	86	2	34
25 - 64	467	20	154	410	13	134	381	13	133	479	10	116	437	15	138
65 +	60	3	15	71	6	16	64	3	19	96	5	19	74	5	19
Unknown	25	0	0	26	0	2	14	0	2	12	0	0	10	0	3
Total	732	28	247	697	26	227	631	18	221	771	20	187	704	26	228

Note: Seatbelt Not Used includes no belts available or no belts used.

5-Year Trend Driver Seatbelt Not Used



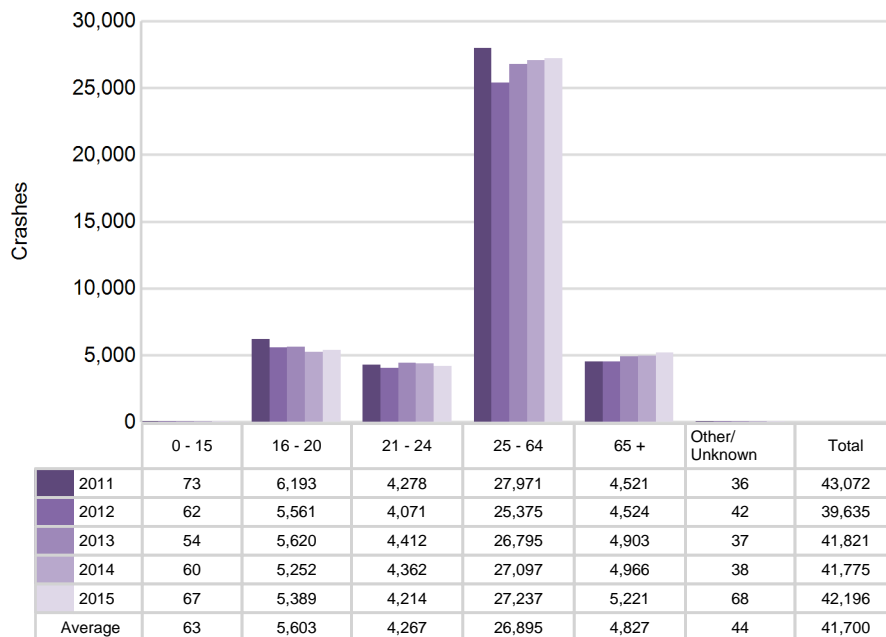
MSP Traffic Safety Network Saginaw Valley (continued)

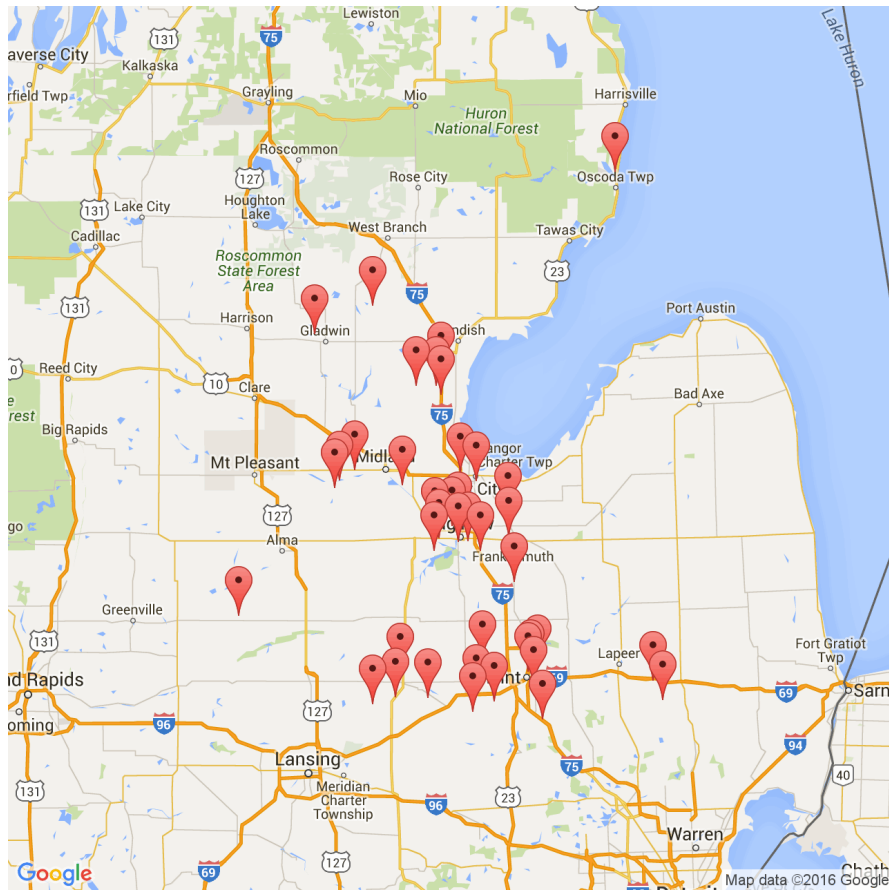
5-Year Trend - Seatbelt Used Among Drivers by Age

Age Group	2011			2012			2013			2014			2015		
	Drivers	Fatal Drivers	Injured Drivers	Drivers	Fatal Drivers	Injured Drivers	Drivers	Fatal Drivers	Injured Drivers	Drivers	Fatal Drivers	Injured Drivers	Drivers	Fatal Drivers	Injured Drivers
0 - 15	73	0	11	62	0	11	54	0	8	60	0	7	67	0	7
16 - 20	6,193	5	768	5,561	4	643	5,620	0	647	5,252	1	564	5,389	2	634
21 - 24	4,278	5	491	4,071	5	482	4,412	1	502	4,362	2	481	4,214	0	482
25 - 64	27,971	17	3,117	25,375	20	2,879	26,795	13	2,855	27,097	15	2,725	27,237	17	2,872
65 +	4,521	13	587	4,524	13	571	4,903	8	578	4,966	8	586	5,221	8	659
Unknown	36	0	0	42	0	1	37	0	2	38	0	0	68	0	1
Total	43,072	40	4,974	39,635	42	4,587	41,821	22	4,592	41,775	26	4,363	42,196	27	4,655

Note: Seatbelt Used includes shoulder belt only used, lap belt only used, both lap and shoulder belts used, and restraint failure.

5-Year Trend Driver Seatbelt Used





The picture above represents all 2015 alcohol-involved fatal crashes in TSN Saginaw Valley.

In 2015, there were 1,002 alcohol-involved crashes in TSN Saginaw Valley:

- 40 K - Fatal Crashes
- 84 A - Incapacitating Injury Crashes
- 134 B - Non-incapacitating Injury Crashes
- 193 C - Possible Injury Crashes
- 551 O - Property Damage Only/No Injury Crashes

Office of Highway Safety Planning

Physical Address:
7150 Harris Drive
Dimondale, Michigan 48821

Mailing Address:
P.O. Box 30634
Lansing, Michigan 48909

Phone: (517) 284-3140
Fax: (517) 284-3151

Find us on the web:
MichiganTrafficCrashFacts.org

