



2015

MTCF
Michigan Traffic
Crash Facts

Michigan Traffic Crash Facts

Reporting Criteria

Please pay particular attention to the wording when interpreting the three levels of data gathered for this report.

Crash

The Crash Level analyzes data related to crash events and returns one result per crash.

Examples: Time, weather, and location.

Units

The Units Level analyzes the experience of the units in the crash and returns one result per vehicle, driver, pedestrian, bicyclist, or train.

Examples: Vehicle type, driver condition, and unit events.

People

The People Level analyzes the experience of the people involved in the crash and returns one result per occupant/person/party.

Examples: Age, injury severity, and seat belt or helmet use.

KABCO Injury Indicator:

K = Killed

A = Incapacitating Injury

B = Non-incapacitating Injury

C = Possible Injury

O = No Injury

Property Damage Only (PDO)



Michigan State Police (MSP) Traffic Safety Network Huron Valley

2015 Traffic Crash Data & 2011-2015 5-Year Trends

Traffic Safety Network Huron Valley is comprised of Livingston, Monroe, and Washtenaw counties. Trend tables for this report are based on those counties.



Sources:

The crashes in this report occurred on public roadways in Michigan and resulted in injuries, fatalities, or property damage (with \$1,000 as a reporting threshold). The information was gathered from Michigan Traffic Crash Report Forms (UD-10) submitted by local police departments, sheriff's offices, and the Michigan State Police. Other related information was obtained from the departments of Transportation, State, and Community Health.

This page left intentionally blank

TSN Huron Valley Experience

In 2015:

There were 34,131 drivers involved in 19,670 motor vehicle crashes in MSP Traffic Safety Network Huron Valley. Of those crashes, 51 were classified as fatal, resulting in 52 fatalities. An additional 4,548 persons were injured.

Traffic Safety Network Huron Valley experienced the highest number of motor vehicle crashes (2,258) in January, the highest number of fatal crashes (9) and the highest number of persons killed (9) in October, July.

Michigan driver statistics indicate 6.6 percent of licensed drivers in Traffic Safety Network Huron Valley were age 16-20, and 12.7 percent of drivers in crashes were also in that age group.

2015 - Crashes and Injuries by Month

Month	Crashes				Persons	
	Total	Fatal	Injury	Property Damage Only (PDO)	Fatalities	Injuries
January	2,258	4	329	1,925	5	434
February	1,760	1	257	1,502	1	362
March	1,312	2	212	1,098	2	280
April	1,229	3	234	992	3	320
May	1,432	4	278	1,150	4	391
June	1,576	3	285	1,288	3	385
July	1,435	9	278	1,148	9	404
August	1,407	4	299	1,104	4	400
September	1,583	4	308	1,271	4	414
October	1,886	9	293	1,584	9	406
November	2,122	3	323	1,796	3	420
December	1,670	5	253	1,412	5	332
Total	19,670	51	3,349	16,270	52	4,548

2015 - Driver Statistics

Age Group	Statewide			Driver Rates	
	2015 Population	Licensed Drivers	Drivers in Crashes	Per 10k Population	Per 10k Licensed
0 - 15	1,938,950	52,553	45	0.2	8.6
16 - 20	675,253	474,427	4,319	64.0	91.0
21 - 24	580,519	480,600	3,719	64.1	77.4
25 - 64	5,157,183	4,760,526	20,834	40.4	43.8
65 +	1,570,671	1,390,210	2,976	18.9	21.4
Unknown	--	--	2,238	--	--
Total	9,922,576	7,158,316	34,131	34.4	47.7

2015 - Vehicles in Crashes

Vehicle Type	Motor Vehicles		Fatal Crashes		Injury Crashes	PDO Crashes
	Number of Vehicles	% of Total	Number	% of Total	Number	Number
Passenger car & station wagon	27,068	79.3	50	57.5	4,843	22,175
Van & motorhome	1,128	3.3	0	0.0	192	936
Pickup truck	3,480	10.2	11	12.6	630	2,839
Small truck under 10,000 lbs. GVWR	452	1.3	2	2.3	79	371
Cycle	212	0.6	13	14.9	145	54
Moped	27	0.1	0	0.0	22	5
Go Cart	3	0.0	0	0.0	1	2
Snowmobile	1	0.0	0	0.0	1	0
Off-Road Vehicle (ORV) & All-Terrain Vehicle (ATV)	15	0.0	0	0.0	11	4
Other	133	0.4	0	0.0	15	118
Truck/bus over 10,000 lbs.	1,104	3.2	11	12.6	177	916
Unknown	508	1.5	0	0.0	40	468
Total	34,131	100.0	87	100.0	6,156	27,888

MSP Traffic Safety Network Huron Valley (continued)

5-Year Trend - Crashes by Month

Month	2011		2012		2013		2014		2015	
	Total Crashes	Fatal Crashes	Total Crashes	Fatal Crashes	Total Crashes	Fatal Crashes	Total Crashes	Fatal Crashes	Total Crashes	Fatal Crashes
January	2,031	3	1,915	2	1,850	2	2,800	4	2,258	4
February	1,635	6	1,491	6	1,740	5	1,893	7	1,760	1
March	1,322	7	1,326	5	1,234	7	1,624	4	1,312	2
April	1,126	2	1,242	8	1,200	6	1,109	9	1,229	3
May	1,300	6	1,395	3	1,498	6	1,417	7	1,432	4
June	1,366	5	1,408	11	1,445	5	1,414	8	1,576	3
July	1,229	5	1,276	3	1,378	7	1,340	9	1,435	9
August	1,222	11	1,190	9	1,393	7	1,295	5	1,407	4
September	1,401	6	1,398	4	1,477	9	1,521	6	1,583	4
October	1,660	11	1,812	5	1,950	6	1,837	4	1,886	9
November	1,781	7	1,747	8	1,817	9	2,198	3	2,122	3
December	1,700	5	1,913	3	2,089	5	1,476	5	1,670	5
Total	17,773	74	18,113	67	19,071	74	19,924	71	19,670	51

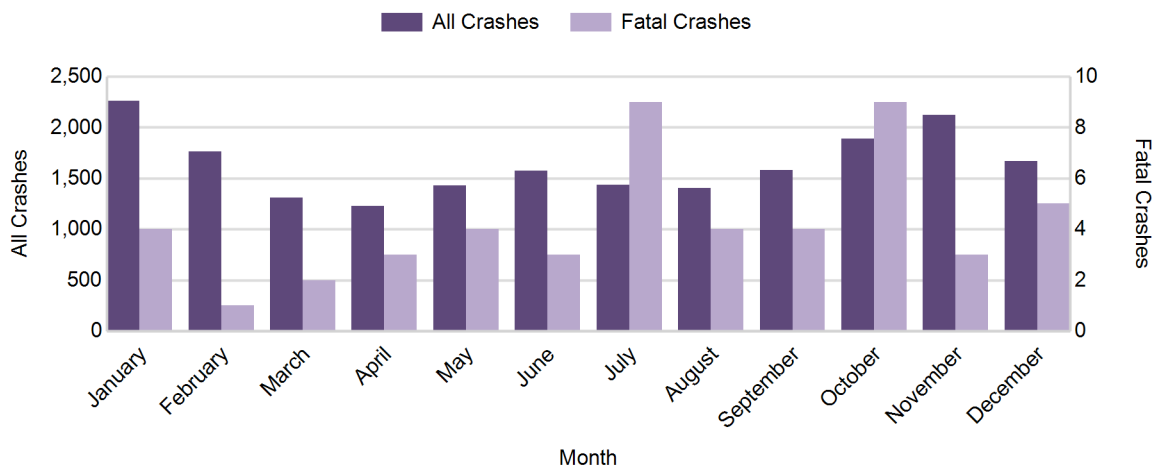
Note: † Indicates that the highest number of total crashes reported in the 5-year period occurred in the same month

5-Year Trend - Crashes by Day of Week

Day	2011		2012		2013		2014		2015	
	Total Crashes	Fatal Crashes	Total Crashes	Fatal Crashes	Total Crashes	Fatal Crashes	Total Crashes	Fatal Crashes	Total Crashes	Fatal Crashes
Monday	2,572	7	2,651	5	2,893	11	2,680	5	2,933	3
Tuesday	2,637	8	2,488	12	2,833	5	2,930	6	2,979	3
Wednesday	2,683	16	2,671	7	2,810	12	3,290	12	3,134	14
Thursday	2,654	15	2,576	7	2,881	12	3,274	9	2,813	9
Friday	3,092	9	3,401	13	3,160	16	3,238	14	3,209	11
Saturday	2,302	11	2,481	15	2,555	11	2,472	15	2,624	6
Sunday	1,833	8	1,845	8	1,939	7	2,040	10	1,978	5
Total	17,773	74	18,113	67	19,071	74	19,924	71	19,670	51

Note: † Indicates that the highest number of total crashes reported in the 5-year period occurred on the same day of the week

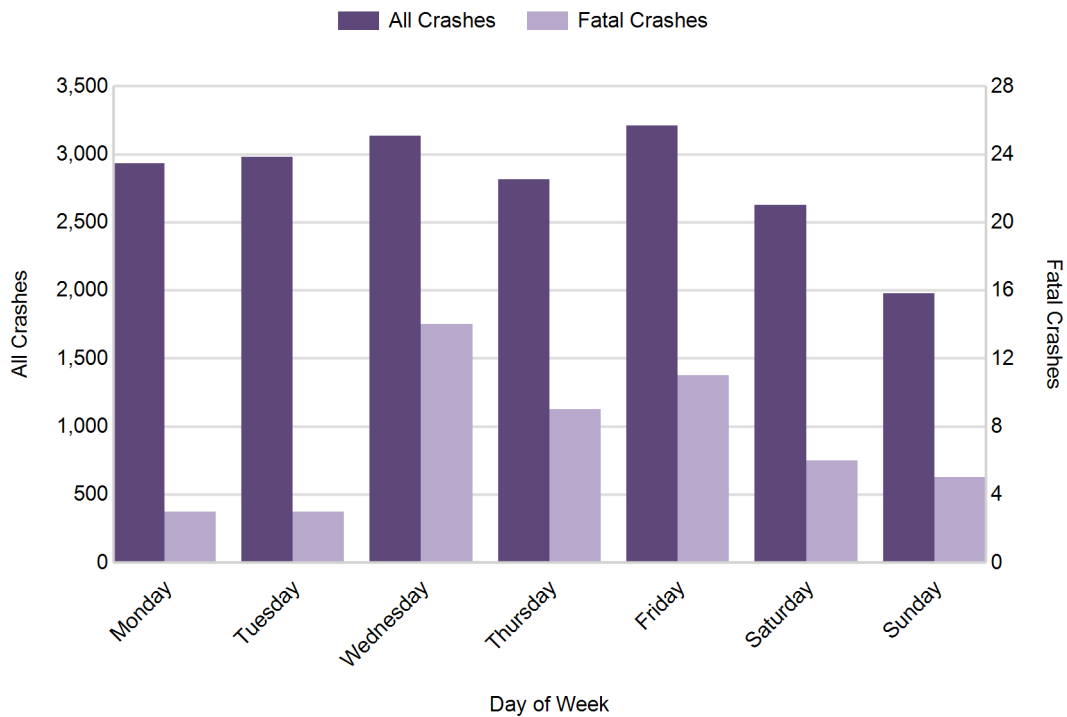
2015 Crashes by Month



2015 - Crashes by Day of Week

Day	All Crashes		Fatal Crashes		Injury Crashes			PDO Crashes
	Number	% of Total	Number	% of Fatal	A	B	C	Number
Monday	2,933	14.9	3	5.9	23	147	354	2,406
Tuesday	2,979	15.1	3	5.9	29	131	350	2,466
Wednesday	3,134	15.9	14	27.5	22	142	334	2,622
Thursday	2,813	14.3	9	17.6	40	146	321	2,297
Friday	3,209	16.3	11	21.6	30	143	362	2,663
Saturday	2,624	13.3	6	11.8	35	124	296	2,163
Sunday	1,978	10.1	5	9.8	32	104	184	1,653
Total	19,670	100.0	51	100.0	211	937	2,201	16,270

2015 Day of Week and Severity

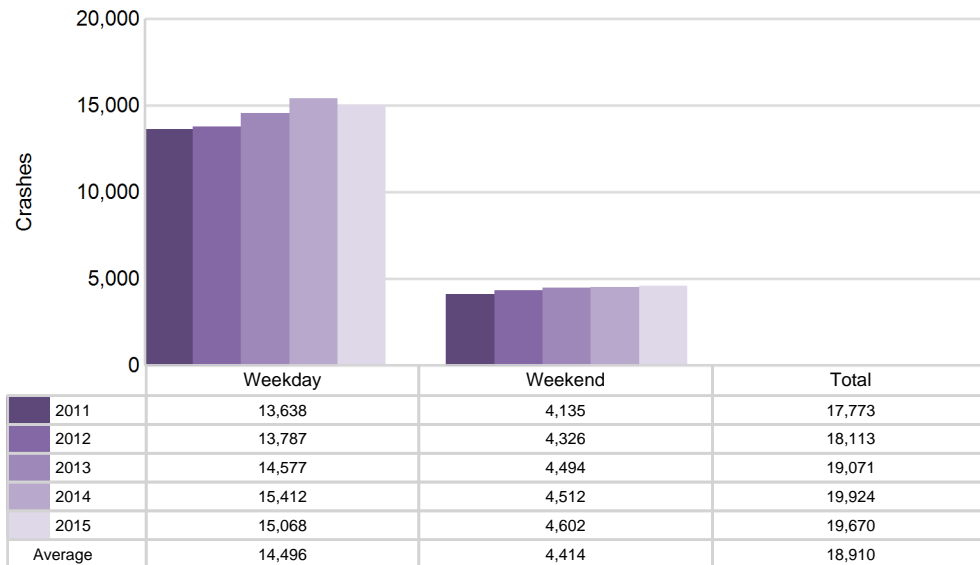


MSP Traffic Safety Network Huron Valley (continued)

5-Year Trend - Crashes by Weekday and Weekend

Portion of Week	2011		2012		2013		2014		2015	
	Total Crashes	Fatal Crashes	Total Crashes	Fatal Crashes	Total Crashes	Fatal Crashes	Total Crashes	Fatal Crashes	Total Crashes	Fatal Crashes
Weekday	13,638	55	13,787	44	14,577	56	15,412	46	15,068	40
Weekend	4,135	19	4,326	23	4,494	18	4,512	25	4,602	11
Total	17,773	74	18,113	67	19,071	74	19,924	71	19,670	51

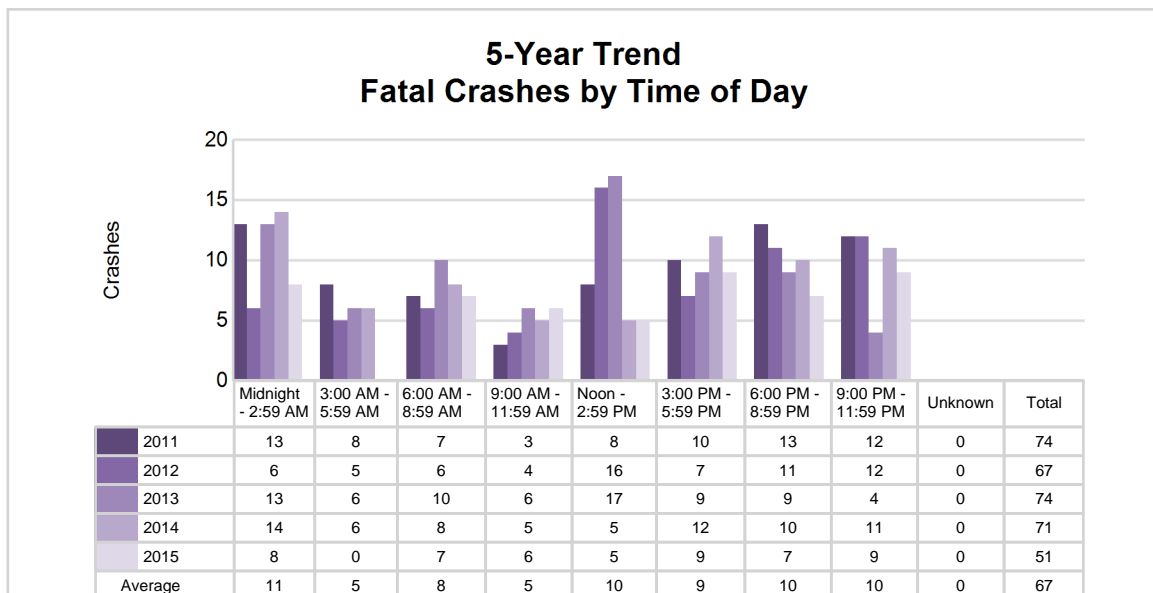
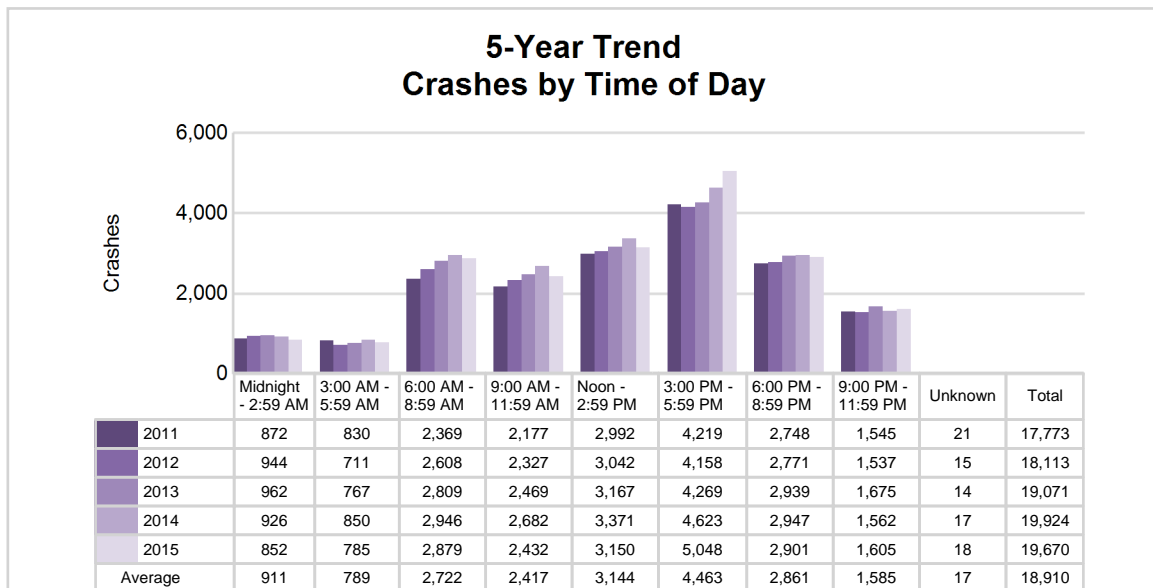
5-Year Crash Trends by Weekday (Monday - Friday) and Weekend (Saturday & Sunday)



5-Year Trend - Crashes by Time of Day

Time of Day	2011		2012		2013		2014		2015	
	Total Crashes	Fatal Crashes	Total Crashes	Fatal Crashes	Total Crashes	Fatal Crashes	Total Crashes	Fatal Crashes	Total Crashes	Fatal Crashes
Midnight - 2:59 AM	872	13	944	6	962	13	926	14	852	8
3:00 AM - 5:59 AM	830	8	711	5	767	6	850	6	785	0
6:00 AM - 8:59 AM	2,369	7	2,608	6	2,809	10	2,946	8	2,879	7
9:00 AM - 11:59 AM	2,177	3	2,327	4	2,469	6	2,682	5	2,432	6
Noon - 2:59 PM	2,992	8	3,042	16	3,167	17	3,371	5	3,150	5
3:00 PM - 5:59 PM	4,219 †	10	4,158 †	7	4,269 †	9	4,623 †	12	5,048 †	9
6:00 PM - 8:59 PM	2,748	13	2,771	11	2,939	9	2,947	10	2,901	7
9:00 PM - 11:59 PM	1,545	12	1,537	12	1,675	4	1,562	11	1,605	9
Unknown	21	0	15	0	14	0	17	0	18	0
Total	17,773	74	18,113	67	19,071	74	19,924	71	19,670	51

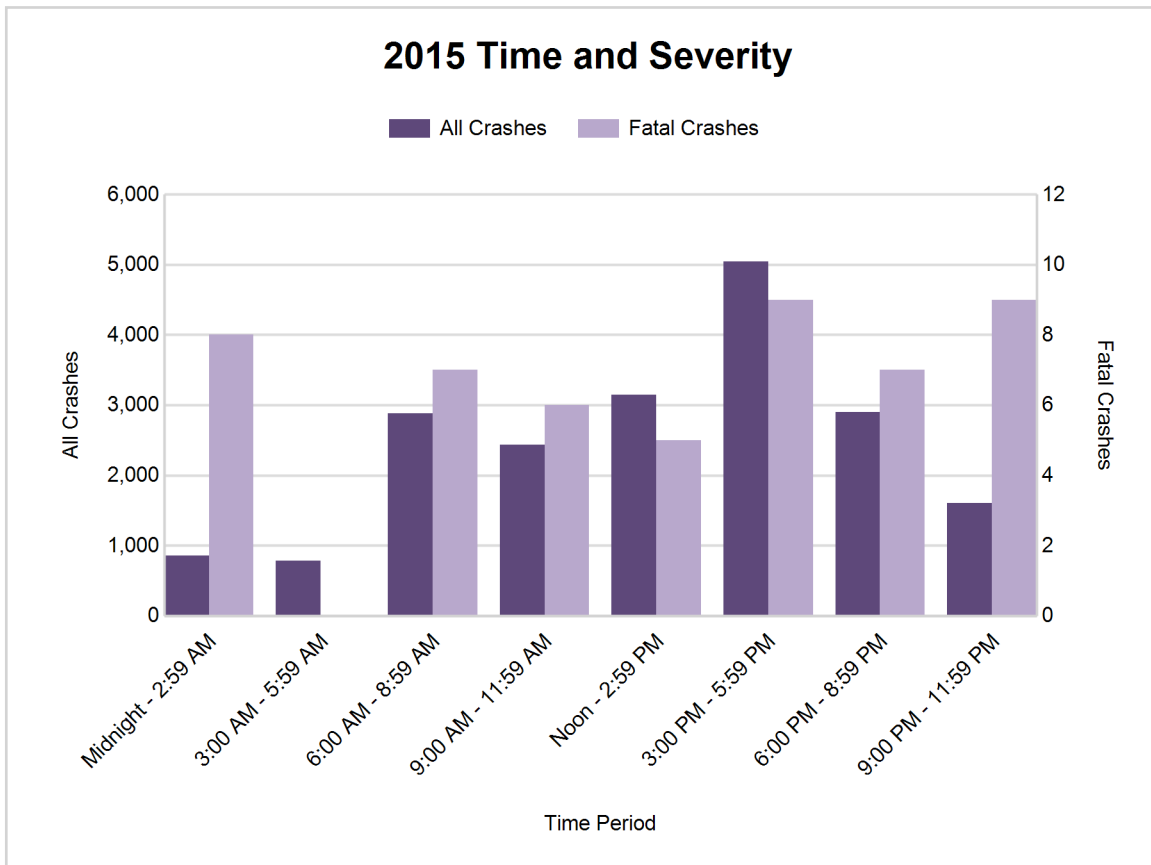
Note: † Indicates that the highest number of total crashes reported in the 5-year period occurred in the same time period



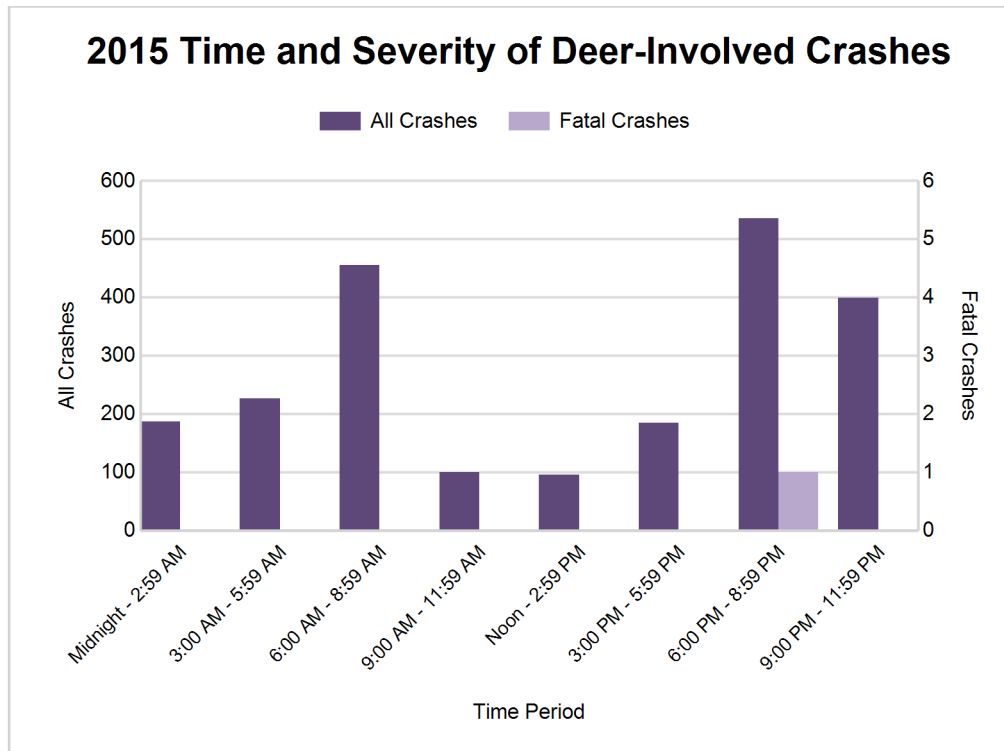
MSP Traffic Safety Network Huron Valley (continued)

2015 - Time and Severity

Time of Day	All Crashes		Fatal Crashes		Injury Crashes			PDO Crashes
	Number	% of Total	Number	% of Fatal	A	B	C	Number
Midnight - 2:59 AM	852	4.3	8	15.7	18	54	79	693
3:00 AM - 5:59 AM	785	4.0	0	0.0	10	48	60	667
6:00 AM - 8:59 AM	2,879	14.6	7	13.7	32	115	328	2,397
9:00 AM - 11:59 AM	2,432	12.4	6	11.8	26	101	269	2,030
Noon - 2:59 PM	3,150	16.0	5	9.8	33	161	392	2,559
3:00 PM - 5:59 PM	5,048	25.7	9	17.6	40	232	616	4,151
6:00 PM - 8:59 PM	2,901	14.7	7	13.7	28	133	297	2,436
9:00 PM - 11:59 PM	1,605	8.2	9	17.6	24	93	160	1,319
Unknown	18	0.1	0	0.0	0	0	0	18
Total	19,670	100.0	51	100.0	211	937	2,201	16,270



MSP Traffic Safety Network Huron Valley (continued)



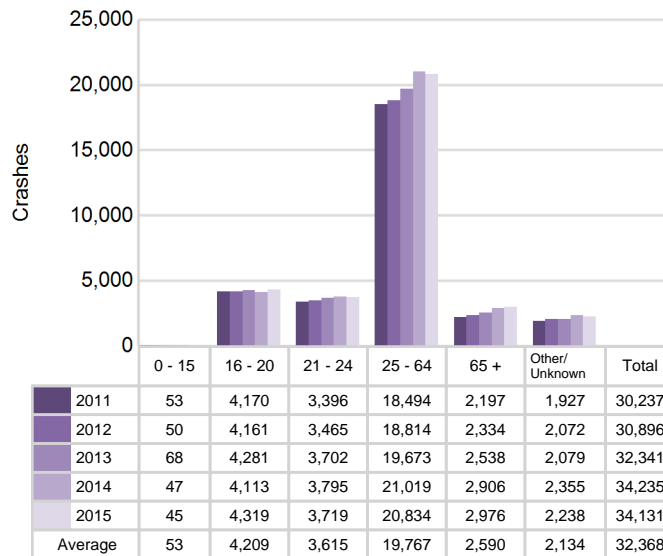
2015 - Reported Motor Vehicle Crashes by County

County	Crashes											Persons	
	Total	Fatal	Injury	Property Damage	Inter-state	US Route	State Route	Local Street	Alcohol-Involved	Drug-Involved	Deer-Involved	Fatalities	Injuries
Livingston	4,977	12	810	4,155	1,023	593	716	2,645	173	38	773	12	1,124
Monroe	3,854	13	672	3,169	687	730	406	2,031	168	42	349	13	934
Washtenaw	10,839	26	1,867	8,946	1,591	1,853	948	6,447	332	121	1,062	27	2,490
Total	19,670	51	3,349	16,270	3,301	3,176	2,070	11,123	673	201	2,184	52	4,548

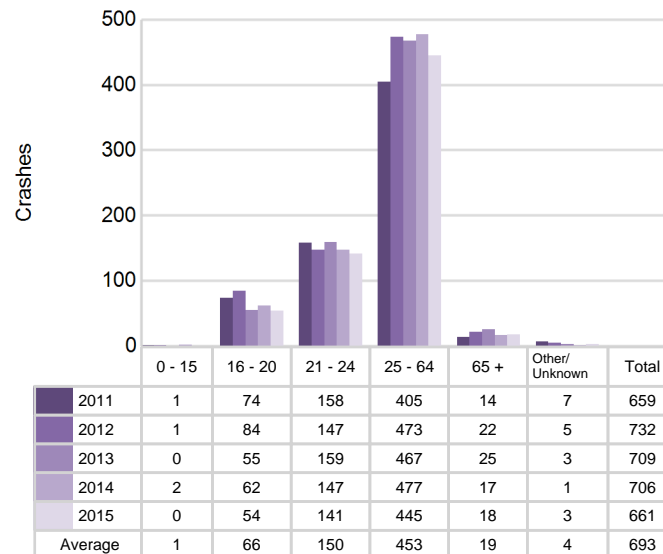
5-Year Trend - Drivers in Crashes Coded Drinking by Driver Age

Driver Age	2011		2012		2013		2014		2015	
	Total Drivers in Crashes	Total Drivers Coded Drinking	Total Drivers in Crashes	Total Drivers Coded Drinking	Total Drivers in Crashes	Total Drivers Coded Drinking	Total Drivers in Crashes	Total Drivers Coded Drinking	Total Drivers in Crashes	Total Drivers Coded Drinking
0 - 15	53	1	50	1	68	0	47	2	45	0
16 - 20	4,170	74	4,161	84	4,281	55	4,113	62	4,319	54
21 - 24	3,396	158	3,465	147	3,702	159	3,795	147	3,719	141
25 - 64	18,494	405	18,814	473	19,673	467	21,019	477	20,834	445
65 +	2,197	14	2,334	22	2,538	25	2,906	17	2,976	18
Unknown	1,927	7	2,072	5	2,079	3	2,355	1	2,238	3
Total	30,237	659	30,896	732	32,341	709	34,235	706	34,131	661

**5-Year Trend
Total Drivers in Crashes by Age**



**5-Year Trend
Total Drivers Coded Drinking by Age**



MSP Traffic Safety Network Huron Valley (continued)

2015 - Bodily Alcohol Concentration (BAC) Results Among All Vehicle Drivers in Alcohol-Involved Crashes by Age

Age Group	Drivers				BAC Result Range for Drivers Coded Drinking				
	Total Drivers in Alcohol-Involved Crashes	Total Drivers Tested in all Crashes	Total Drivers Coded Drinking, Tested	Total Drivers Coded Drinking	BAC = 0.00	BAC 0.01 g/dL to 0.07 g/dL	BAC 0.08 g/dL to 0.16 g/dL	BAC 0.17 g/dL and Above	BAC Not Reported
0 - 15	0	1	0	0	0	0	0	0	0
16 - 20	75	74	49	54	2	8	17	11	16
21 - 24	168	145	122	141	1	19	41	34	46
25 - 64	609	488	363	445	11	30	102	128	174
65 +	35	24	16	18	0	1	6	5	6
Unknown	69	0	0	3	0	0	0	0	3
Total	956	732	550	661	14	58	166	178	245

Notes: BAC measured in grams (g) per deciliter (dL).

BAC may not be reported if drivers are not tested or if the results are not available immediately (as in the case of a blood test).

A driver may be coded by the officer as drinking even though no test is administered.

Alcohol-Involved Crashes

In 2015, there were 956 drivers in alcohol-involved crashes; 661 (69.1%) of those drivers were coded as had-been-drinking by the officer on the crash form.

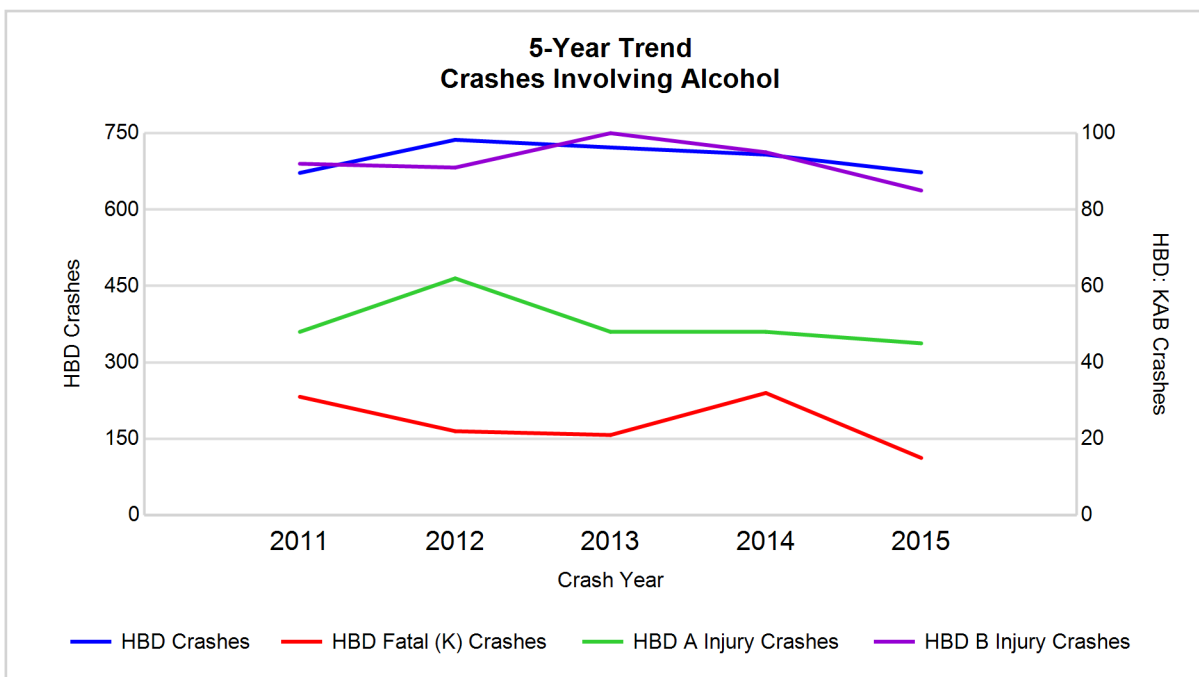
- 344 (52.0%) of the 661 drivers had a blood alcohol concentration (BAC) of 0.08 g/dL (grams per deciliter) or greater, and 178 (51.7%) of the 344 drivers had a BAC at or above 0.17 g/dL.
- 550 (83.2%) of the 661 drivers were coded as had-been-drinking and were tested for alcohol consumption.

5-Year Trend - Crashes Involving Alcohol

Year	All Crashes	HBD Crashes	% HBD	Fatal Crashes	HBD Fatal Crashes	% HBD	A Injury Crashes	HBD A Injury Crashes	% HBD	B Injury Crashes	HBD B Injury Crashes	% HBD
2011	17,773	672	3.8	74	31	41.9	261	48	18.4	937	92	9.8
2012	18,113	737	4.1	67	22	32.8	274	62	22.6	922	91	9.9
2013	19,071	722	3.8	74	21	28.4	271	48	17.7	945	100	10.6
2014	19,924	708	3.6	71	32	45.1	249	48	19.3	889	95	10.7
2015	19,670	673	3.4*	51*	15*	29.4	211*	45*	21.3	937	85*	9.1*

Note: * Indicates that the most recent year is the lowest number or percentage reported in the 5-year period in that column

** Indicates that the most recent year is the highest number or percentage reported in the 5-year period in that column



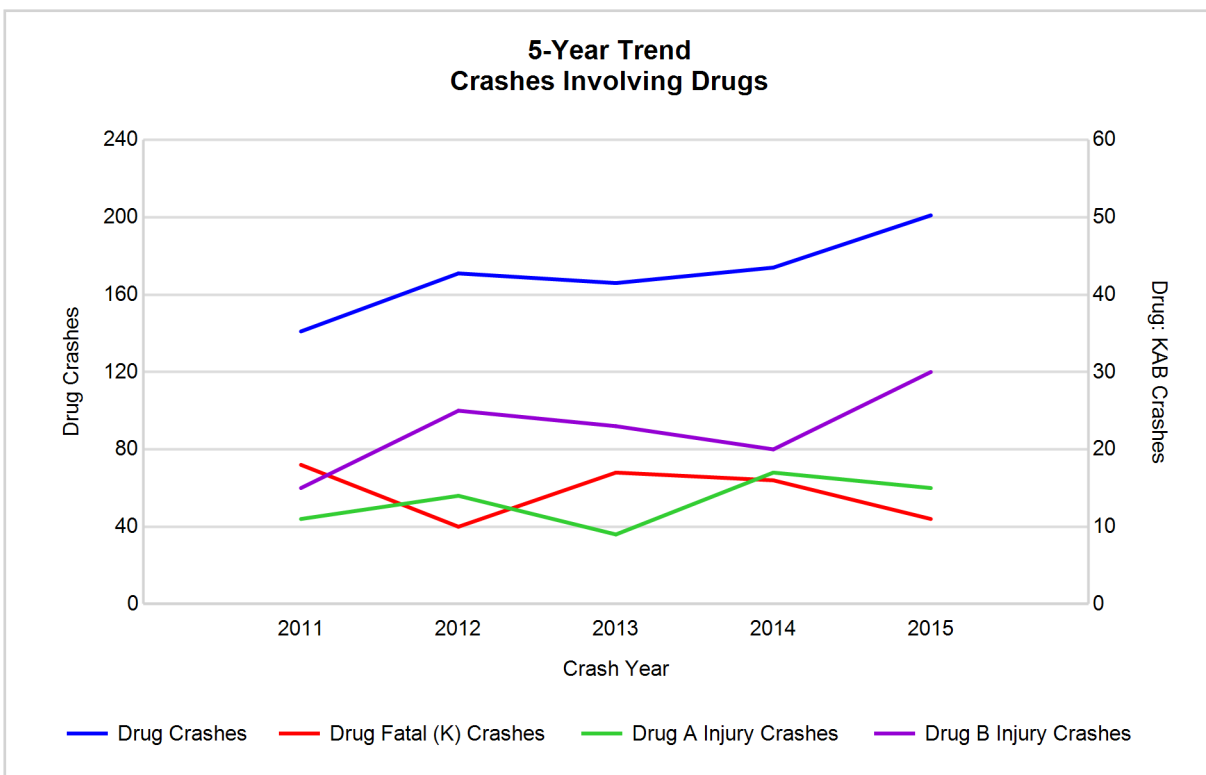
Note: Had-Been-Drinking (HBD)

5-Year Trend - Crashes Involving Drugs

Year	All Crashes	Drug Crashes	% Drug	Fatal Crashes	Drug Fatal Crashes	% Drug	A Injury Crashes	Drug A Injury Crashes	% Drug	B Injury Crashes	Drug B Injury Crashes	% Drug
2011	17,773	141	0.8	74	18	24.3	261	11	4.2	937	15	1.6
2012	18,113	171	0.9	67	10	14.9	274	14	5.1	922	25	2.7
2013	19,071	166	0.9	74	17	23.0	271	9	3.3	945	23	2.4
2014	19,924	174	0.9	71	16	22.5	249	17	6.8	889	20	2.2
2015	19,670	201**	1.0**	51*	11	21.6	211*	15	7.1**	937	30**	3.2**

Note: * Indicates that the most recent year is the lowest number or percentage reported in the 5-year period in that column

** Indicates that the most recent year is the highest number or percentage reported in the 5-year period in that column



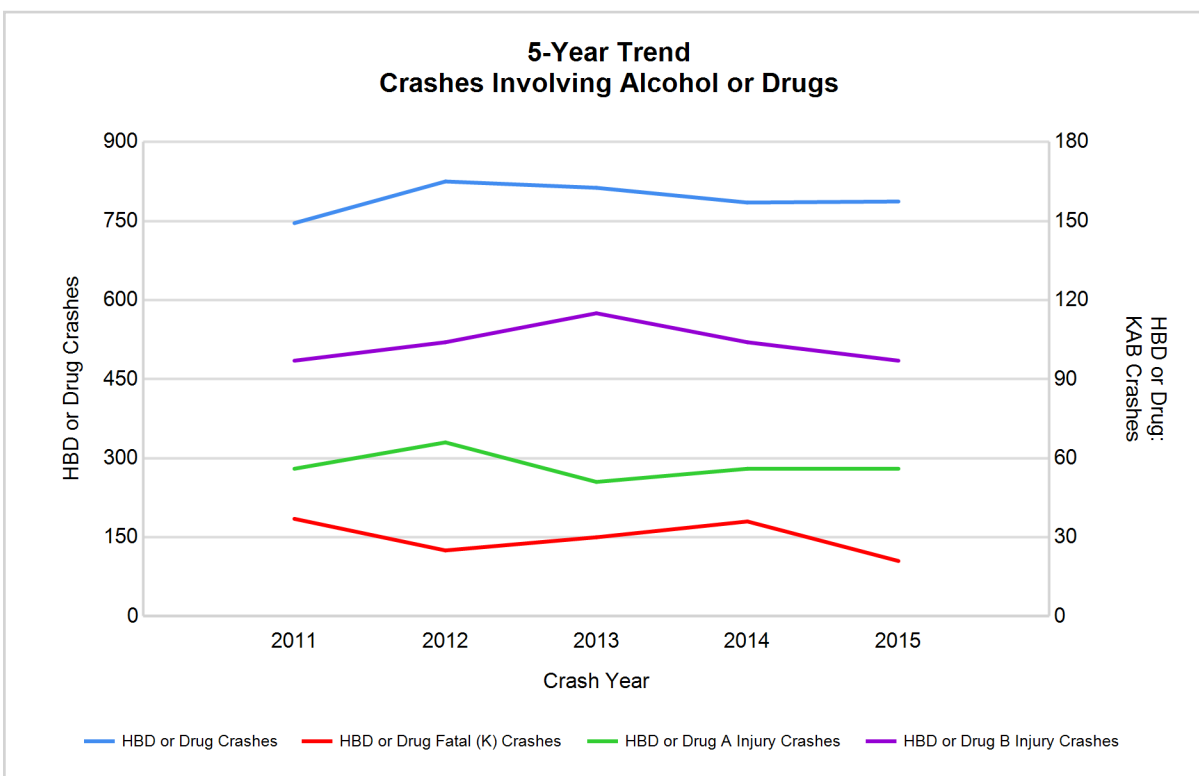
MSP Traffic Safety Network Huron Valley (continued)

5-Year Trend - Crashes Involving Alcohol or Drugs

Year	All Crashes	HBD or Drug Crashes	% HBD or Drug	Fatal Crashes	HBD or Drug Fatal Crashes	% HBD or Drug	A Injury Crashes	HBD or Drug A Injury Crashes	% HBD or Drug	B Injury Crashes	HBD or Drug B Injury Crashes	% HBD or Drug
2011	17,773	746	4.2	74	37	50.0	261	56	21.5	937	97	10.4
2012	18,113	825	4.6	67	25	37.3	274	66	24.1	922	104	11.3
2013	19,071	813	4.3	74	30	40.5	271	51	18.8	945	115	12.2
2014	19,924	785	3.9	71	36	50.7	249	56	22.5	889	104	11.7
2015	19,670	787	4.0	51*	21*	41.2	211*	56	26.5**	937	97	10.4

Note: * Indicates that the most recent year is the lowest number or percentage reported in the 5-year period in that column

** Indicates that the most recent year is the highest number or percentage reported in the 5-year period in that column



Note: Had-Been-Drinking (HBD)

2015 - Restraints Worn Among Vehicle Drivers and Injured Passengers by Vehicle Type

Vehicle Type	Total Occupants			Fatalities			A - Incapacitating			B - Non-incapacitating			C - Possible Injury			No Injury		
	Total	Used Restraint	%	Total	Used Restraint	%	Total	Used Restraint	%	Total	Used Restraint	%	Total	Used Restraint	%	Total	Used Restraint	%
Passenger car & station wagon	27,928	25,986	93.0	26	14	53.8	167	127	76.0	823	751	91.3	2,545	2,462	96.7	23,109	22,627	97.9
Van & motorhome	1,162	1,080	92.9	0	0	0.0	4	4	100.0	25	22	88.0	102	93	91.2	988	960	97.2
Pickup truck	3,577	3,202	89.5	2	1	50.0	22	15	68.2	93	79	84.9	249	229	92.0	2,972	2,878	96.8
Small truck under 10,000 lbs. GVWR	460	416	90.4	1	0	0.0	3	0	0.0	10	8	80.0	31	29	93.5	389	379	97.4
Cycle	230	153	66.5	13	6	46.2	23	14	60.9	80	54	67.5	52	36	69.2	57	42	73.7
Moped	28	11	39.3	0	0	0.0	4	2	50.0	11	4	36.4	6	1	16.7	7	4	57.1
Go Cart	3	0	0.0	0	0	0.0	0	0	0.0	1	0	0.0	0	0	0.0	1	0	0.0
Snowmobile	1	0	0.0	0	0	0.0	0	0	0.0	0	0	0.0	0	0	0.0	0	0	0.0
Off-Road Vehicle (ORV) & All-Terrain Vehicle (ATV)	19	4	21.1	0	0	0.0	4	1	25.0	10	2	20.0	0	0	0.0	4	1	25.0
Other	138	82	59.4	0	0	0.0	5	5	100.0	3	0	0.0	4	2	50.0	92	75	81.5
Truck/bus over 10,000 lbs.	1,141	1,026	89.9	0	0	0.0	5	2	40.0	21	11	52.4	51	24	47.1	1,019	989	97.1
Unknown	508	3	0.6	0	0	0.0	0	0	0.0	0	0	0.0	1	0	0.0	16	1	6.3
Total	35,195	31,963	90.8	42	21	50.0	237	170	71.7	1,077	931	86.4	3,041	2,876	94.6	28,654	27,956	97.6

Note: Restraint Use includes shoulder belt only used, lap belt only used, both lap and shoulder belts used, child restraint used, restraint failure, and helmet worn.

2015 - Restraints Worn Among Vehicle Drivers and Injured Passengers by Age

Age Group	Total Occupants			Fatalities			A - Incapacitating			B - Non-incapacitating			C - Possible Injury			No Injury		
	Total	Used Restraint	%	Total	Used Restraint	%	Total	Used Restraint	%	Total	Used Restraint	%	Total	Used Restraint	%	Total	Used Restraint	%
0 - 15	330	274	83.0	1	1	100.0	7	4	57.1	67	53	79.1	213	181	85.0	38	34	89.5
16 - 20	4,491	4,356	97.0	5	4	80.0	21	14	66.7	181	157	86.7	402	380	94.5	3,876	3,801	98.1
21 - 24	3,832	3,710	96.8	6	3	50.0	26	13	50.0	146	121	82.9	302	288	95.4	3,346	3,283	98.1
25 - 64	21,222	20,580	97.0	25	9	36.0	162	122	75.3	572	494	86.4	1,818	1,731	95.2	18,619	18,223	97.9
65 +	3,078	3,012	97.9	5	4	80.0	21	17	81.0	111	106	95.5	305	296	97.0	2,633	2,589	98.3
Unknown	2,242	31	1.4	0	0	0.0	0	0	0.0	0	0	0.0	1	0	0.0	142	26	18.3
Total	35,195	31,963	90.8	42	21	50.0	237	170	71.7	1,077	931	86.4	3,041	2,876	94.6	28,654	27,956	97.6

Note: Restraint Use includes shoulder belt only used, lap belt only used, both lap and shoulder belts used, child restraint used, restraint failure, and helmet worn.

MSP Traffic Safety Network Huron Valley (continued)

5-Year Trend - Restraint Use Among Drivers

Restraint Use	2011			2012			2013			2014			2015		
	Drivers	Fatal Drivers	Injured Drivers	Drivers	Fatal Drivers	Injured Drivers	Drivers	Fatal Drivers	Injured Drivers	Drivers	Fatal Drivers	Injured Drivers	Drivers	Fatal Drivers	Injured Drivers
No belts available	135	0	19	91	0	10	63	1	8	61	1	10	66	1	13
Shoulder belt only used	9	0	2	12	0	2	16	0	3	10	1	0	10	0	2
Lap belt only used	57	0	8	52	0	10	39	1	1	41	0	3	46	0	4
Both lap & shoulder belts used	27,330	21	2,838	27,790	19	2,927	29,280	27	2,844	30,826	20	2,855	30,858	11	2,986
No belts used	177	15	76	201	9	93	198	18	92	171	12	88	165	7	74
Child restraint used	0	0	0	0	0	0	0	0	0	0	0	0	1	0	0
Child restraint not used, unavailable or improper use	2	0	0	0	0	0	1	0	0	2	0	0	0	0	0
Restraint failure	2	0	0	6	0	0	3	0	2	2	0	1	2	0	0
Restraint use unknown	1,438	4	60	1,631	5	79	1,686	3	73	2,040	7	69	1,849	2	71
Helmet worn	232	12	169	212	5	158	188	4	133	173	10	118	154	6	100
Helmet not worn	17	1	13	64	4	48	69	3	48	67	4	49	93	5	59
Helmet use unknown	4	0	3	8	1	4	8	0	4	14	0	9	17	2	7
Uncoded & errors	834	0	1	829	0	0	790	0	1	828	0	0	870	0	0
Total	30,237	53	3,189	30,896	43	3,331	32,341	57	3,209	34,235	55	3,202	34,131	34	3,316

5-Year Trend - Restraint Use Among Drivers Coded Drinking

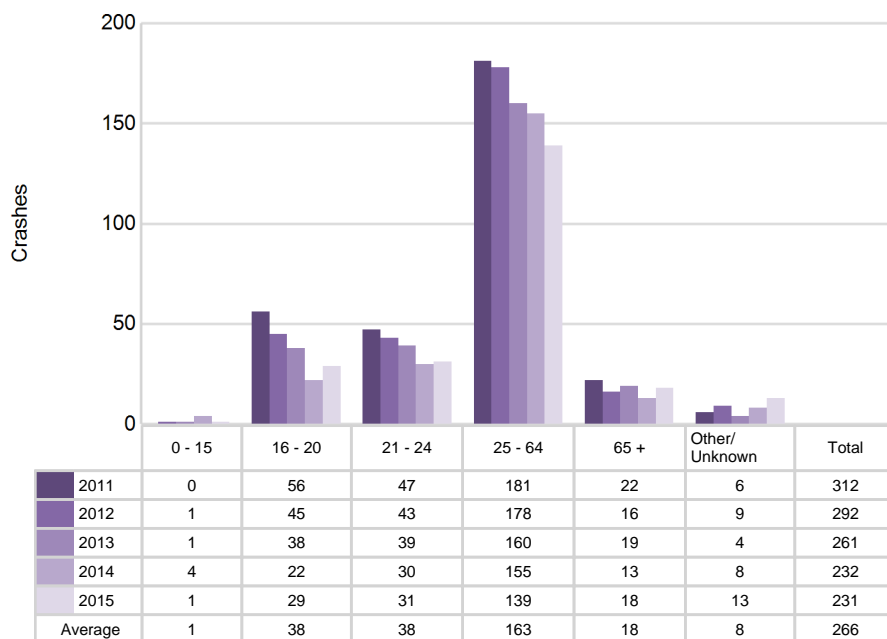
Restraint Use	2011			2012			2013			2014			2015		
	Drivers	Fatal Drivers	Injured Drivers	Drivers	Fatal Drivers	Injured Drivers	Drivers	Fatal Drivers	Injured Drivers	Drivers	Fatal Drivers	Injured Drivers	Drivers	Fatal Drivers	Injured Drivers
No belts available	4	0	3	0	0	0	2	0	2	3	1	0	4	0	3
Shoulder belt only used	0	0	0	0	0	0	1	0	1	1	1	0	0	0	0
Lap belt only used	3	0	2	1	0	1	0	0	0	0	0	0	3	0	1
Both lap & shoulder belts used	500	6	132	554	4	152	548	5	147	539	6	146	510	1	121
No belts used	40	7	21	62	4	40	49	7	27	53	7	36	36	3	22
Child restraint used	0	0	0	0	0	0	0	0	0	0	0	0	0	0	0
Child restraint not used, unavailable or improper use	0	0	0	0	0	0	0	0	0	0	0	0	0	0	0
Restraint failure	0	0	0	0	0	0	0	0	0	0	0	0	0	0	0
Restraint use unknown	93	2	25	95	2	32	85	0	24	94	3	27	90	1	26
Helmet worn	11	2	9	9	2	7	11	0	7	8	2	5	5	0	5
Helmet not worn	4	1	3	6	1	4	12	2	9	8	3	4	12	4	7
Helmet use unknown	1	0	1	2	1	1	1	0	0	0	0	0	1	0	0
Uncoded & errors	3	0	0	3	0	0	0	0	0	0	0	0	0	0	0
Total	659	18	196	732	14	237	709	14	217	706	23	218	661	9	185

5-Year Trend - Seatbelt Not Used Among Drivers by Age

Age Group	2011			2012			2013			2014			2015		
	Drivers	Fatal Drivers	Injured Drivers	Drivers	Fatal Drivers	Injured Drivers	Drivers	Fatal Drivers	Injured Drivers	Drivers	Fatal Drivers	Injured Drivers	Drivers	Fatal Drivers	Injured Drivers
0 - 15	0	0	0	1	0	0	1	0	1	4	0	3	1	0	1
16 - 20	56	2	20	45	1	18	38	2	14	22	1	11	29	1	9
21 - 24	47	3	17	43	2	21	39	4	13	30	3	14	31	2	18
25 - 64	181	7	52	178	5	59	160	9	66	155	8	66	139	5	53
65 +	22	3	6	16	1	4	19	4	6	13	1	3	18	0	5
Unknown	6	0	0	9	0	1	4	0	0	8	0	1	13	0	1
Total	312	15	95	292	9	103	261	19	100	232	13	98	231	8	87

Note: Seatbelt Not Used includes no belts available or no belts used.

5-Year Trend Driver Seatbelt Not Used



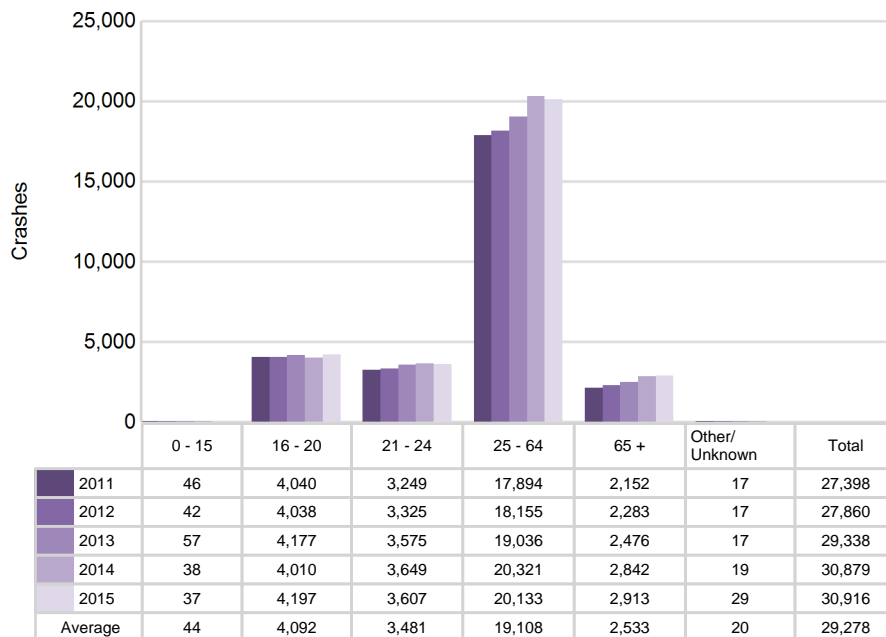
MSP Traffic Safety Network Huron Valley (continued)

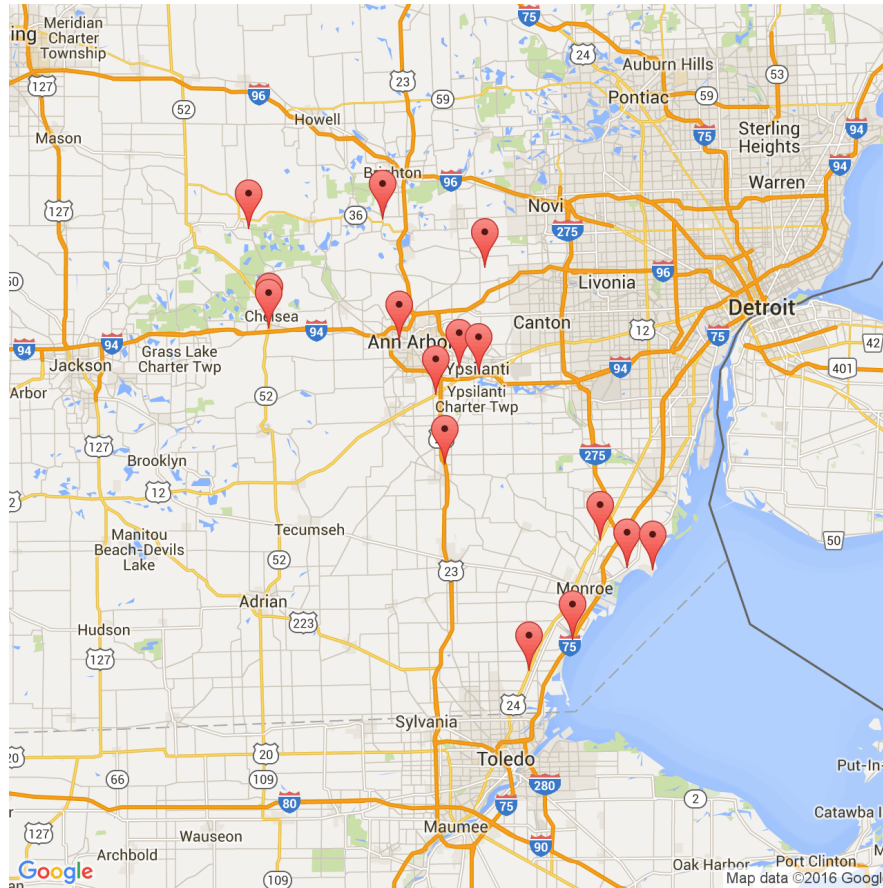
5-Year Trend - Seatbelt Used Among Drivers by Age

Age Group	2011			2012			2013			2014			2015		
	Drivers	Fatal Drivers	Injured Drivers	Drivers	Fatal Drivers	Injured Drivers	Drivers	Fatal Drivers	Injured Drivers	Drivers	Fatal Drivers	Injured Drivers	Drivers	Fatal Drivers	Injured Drivers
0 - 15	46	0	4	42	0	4	57	0	7	38	0	5	37	0	4
16 - 20	4,040	5	419	4,038	2	435	4,177	2	398	4,010	4	357	4,197	3	398
21 - 24	3,249	2	318	3,325	4	340	3,575	1	348	3,649	4	322	3,607	1	324
25 - 64	17,894	10	1,842	18,155	10	1,917	19,036	18	1,828	20,321	7	1,858	20,133	4	1,944
65 +	2,152	4	265	2,283	3	242	2,476	7	269	2,842	6	315	2,913	3	322
Unknown	17	0	0	17	0	1	17	0	0	19	0	2	29	0	0
Total	27,398	21	2,848	27,860	19	2,939	29,338	28	2,850	30,879	21	2,859	30,916	11	2,992

Note: Seatbelt Used includes shoulder belt only used, lap belt only used, both lap and shoulder belts used, and restraint failure.

5-Year Trend Driver Seatbelt Used





The picture above represents all 2015 alcohol-involved fatal crashes in TSN Huron Valley.

In 2015, there were 673 alcohol-involved crashes in TSN Huron Valley:

- 15 K - Fatal Crashes
- 45 A - Incapacitating Injury Crashes
- 85 B - Non-incapacitating Injury Crashes
- 104 C - Possible Injury Crashes
- 424 O - Property Damage Only/No Injury Crashes

Office of Highway Safety Planning

Physical Address:
7150 Harris Drive
Dimondale, Michigan 48821

Mailing Address:
P.O. Box 30634
Lansing, Michigan 48909

Phone: (517) 284-3140
Fax: (517) 284-3151

Find us on the web:
MichiganTrafficCrashFacts.org

