



# Michigan Traffic Crash Facts

## Reporting Criteria

Please pay particular attention to the wording when interpreting the three levels of data gathered for this report.

### Crash

The Crash Level analyzes data related to crash events and returns one result per crash.

Examples: Time, weather, and location.

### Units

The Units Level analyzes the experience of the units in the crash and returns one result per vehicle, driver, pedestrian, bicyclist, or train.

Examples: Vehicle type, driver condition, and unit events.

### People

The People Level analyzes the experience of the people involved in the crash and returns one result per occupant/person/party.

Examples: Age, injury severity, and seat belt or helmet use.

### **KABCO Injury Indicator:**

K = Killed

A = Incapacitating Injury

B = Non-incapacitating Injury

C = Possible Injury

O = No Injury

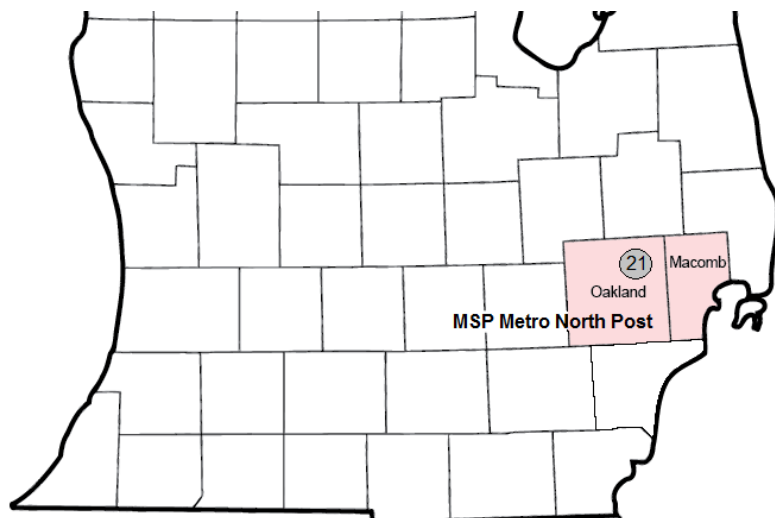
Property Damage Only (PDO)



## Michigan State Police (MSP) Post 21 - Metro North

### 2015 Traffic Crash Data & 2011-2015 5-Year Trends

Post 21 is comprised of Macomb and Oakland counties. Trend tables for this report are based on those counties.



### Sources:

The crashes in this report occurred on public roadways in Michigan and resulted in injuries, fatalities, or property damage (with \$1,000 as a reporting threshold). The information was gathered from Michigan Traffic Crash Report Forms (UD-10) submitted by local police departments, sheriff's offices, and the Michigan State Police. Other related information was obtained from the departments of Transportation, State, and Community Health.

This page left intentionally blank

## Post 21 Experience

In 2015:

There were 125,668 drivers involved in 64,705 motor vehicle crashes in MSP Post 21. Of those crashes, 119 were classified as fatal, resulting in 126 fatalities. An additional 17,790 persons were injured.

Post 21 experienced the highest number of motor vehicle crashes (6,359) in January, the highest number of fatal crashes (15) in July, and the highest number of persons killed (16) in June and July.

Michigan driver statistics indicate 6.7 percent of licensed drivers in Post 21 were age 16-20, and 11.2 percent of drivers in crashes were also in that age group.

## 2015 - Crashes and Injuries by Month

Month	Crashes				Persons	
	Total	Fatal	Injury	Property Damage Only (PDO)	Fatalities	Injuries
January	6,359	7	1,069	5,283	8	1,419
February	5,610	6	945	4,659	6	1,255
March	4,753	9	891	3,853	9	1,205
April	4,328	7	914	3,407	7	1,271
May	5,332	12	1,215	4,105	14	1,710
June	5,237	14	1,162	4,061	16	1,633
July	5,061	15	1,130	3,916	16	1,542
August	4,983	9	1,141	3,833	9	1,555
September	5,486	11	1,137	4,338	11	1,532
October	5,793	7	1,191	4,595	8	1,604
November	6,024	9	1,141	4,874	9	1,554
December	5,739	13	1,111	4,615	13	1,510
<b>Total</b>	<b>64,705</b>	<b>119</b>	<b>13,047</b>	<b>51,539</b>	<b>126</b>	<b>17,790</b>

## 2015 - Driver Statistics

Age Group	Statewide			Driver Rates	
	2015 Population	Licensed Drivers	Drivers in Crashes	Per 10k Population	Per 10k Licensed
0 - 15	400,898	13,021	154	3.8	118.3
16 - 20	127,325	110,157	14,037	1,102.5	1,274.3
21 - 24	104,991	107,355	12,016	1,144.5	1,119.3
25 - 64	1,144,222	1,117,551	77,861	680.5	696.7
65 +	329,708	290,223	11,650	353.3	401.4
Unknown	--	--	9,950	--	--
<b>Total</b>	<b>2,107,144</b>	<b>1,638,307</b>	<b>125,668</b>	<b>596.4</b>	<b>767.1</b>

## 2015 - Vehicles in Crashes

Vehicle Type	Motor Vehicles		Fatal Crashes		Injury Crashes	PDO Crashes
	Number of Vehicles	% of Total	Number	% of Total	Number	Number
Passenger car & station wagon	103,797	82.6	144	72.4	22,074	81,579
Van & motorhome	4,682	3.7	6	3.0	1,095	3,581
Pickup truck	10,972	8.7	24	12.1	2,105	8,843
Small truck under 10,000 lbs. GVWR	1,037	0.8	1	0.5	207	829
Cycle	510	0.4	15	7.5	387	108
Moped	31	0.0	0	0.0	25	6
Go Cart	0	0.0	0	0.0	0	0
Snowmobile	2	0.0	0	0.0	1	1
Off-Road Vehicle (ORV) & All-Terrain Vehicle (ATV)	19	0.0	0	0.0	12	7
Other	383	0.3	0	0.0	51	332
Truck/bus over 10,000 lbs.	2,463	2.0	8	4.0	422	2,033
Unknown	1,772	1.4	1	0.5	145	1,626
<b>Total</b>	<b>125,668</b>	<b>100.0</b>	<b>199</b>	<b>100.0</b>	<b>26,524</b>	<b>98,945</b>

## MSP Post 21 - Metro North (continued)

### 5-Year Trend - Crashes by Month

Month	2011		2012		2013		2014		2015	
	Total Crashes	Fatal Crashes	Total Crashes	Fatal Crashes	Total Crashes	Fatal Crashes	Total Crashes	Fatal Crashes	Total Crashes	Fatal Crashes
January	4,950	8	5,285	7	5,249	9	7,723	2	6,359	7
February	4,953	6	4,180	6	4,890	8	5,548	7	5,610	6
March	4,642	8	4,008	10	4,398	10	5,122	4	4,753	9
April	3,666	11	4,011	8	4,275	6	3,883	7	4,328	7
May	4,533	8	4,842	11	5,192	6	5,095	8	5,332	12
June	4,895	4	4,778	8	4,944	10	5,113	16	5,237	14
July	4,229	8	4,649	8	4,688	13	4,483	9	5,061	15
August	4,415	12	4,477	14	4,614	8	4,878	7	4,983	9
September	4,961	11	4,262	6	4,914	12	5,371	9	5,486	11
October	5,254	12	5,580	9	5,705	7	6,007	12	5,793	7
November	5,354	9	4,881	12	5,409	10	6,262	9	6,024	9
December	5,378	10	5,835	5	6,220	4	4,937	13	5,739	13
<b>Total</b>	<b>57,230</b>	<b>107</b>	<b>56,788</b>	<b>104</b>	<b>60,498</b>	<b>103</b>	<b>64,422</b>	<b>103</b>	<b>64,705</b>	<b>119</b>

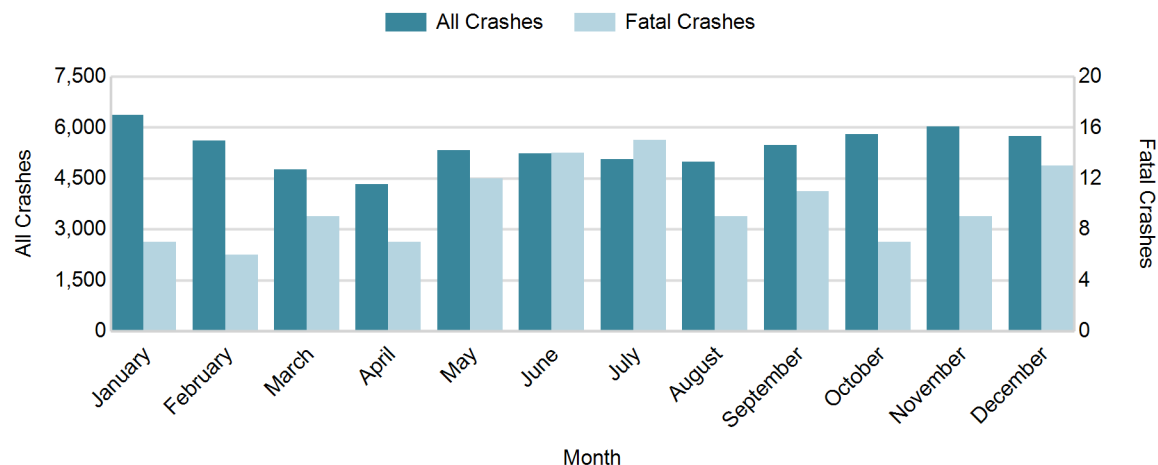
Note: † Indicates that the highest number of total crashes reported in the 5-year period occurred in the same month

### 5-Year Trend - Crashes by Day of Week

Day	2011		2012		2013		2014		2015	
	Total Crashes	Fatal Crashes	Total Crashes	Fatal Crashes	Total Crashes	Fatal Crashes	Total Crashes	Fatal Crashes	Total Crashes	Fatal Crashes
Monday	8,293	16	8,518	17	8,954	16	9,537	12	9,699	19
Tuesday	8,920	19	8,656	13	9,258	17	10,441	18	10,371	13
Wednesday	9,151	18	8,969	11	9,865	11	11,063	12	10,694	16
Thursday	8,961	10	8,928	14	9,913	14	10,436	17	10,042	15
Friday	9,856	7	9,741	14	9,859	15	10,510	11	10,663	27
Saturday	7,023	24	6,812	22	7,558	20	7,102	16	7,693	19
Sunday	5,026	13	5,164	13	5,091	10	5,333	17	5,543	10
<b>Total</b>	<b>57,230</b>	<b>107</b>	<b>56,788</b>	<b>104</b>	<b>60,498</b>	<b>103</b>	<b>64,422</b>	<b>103</b>	<b>64,705</b>	<b>119</b>

Note: † Indicates that the highest number of total crashes reported in the 5-year period occurred on the same day of the week

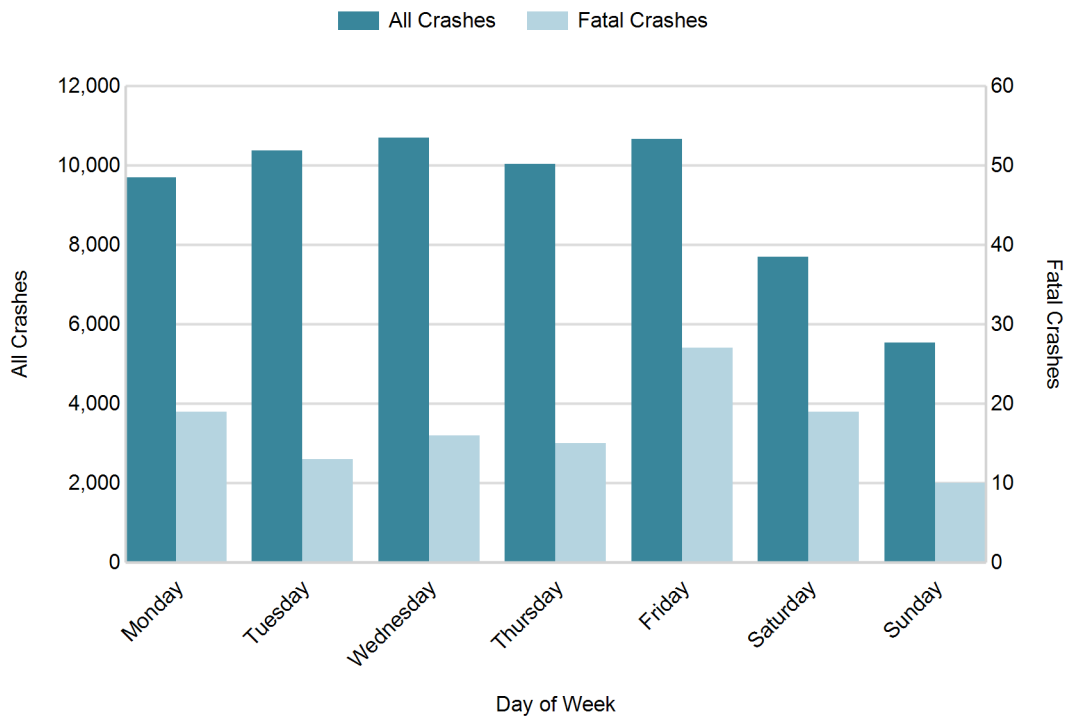
### 2015 Crashes by Month



## 2015 - Crashes by Day of Week

Day	All Crashes		Fatal Crashes		Injury Crashes			PDO Crashes
	Number	% of Total	Number	% of Fatal	A	B	C	Number
Monday	9,699	15.0	19	16.0	86	459	1,353	7,782
Tuesday	10,371	16.0	13	10.9	78	447	1,588	8,245
Wednesday	10,694	16.5	16	13.4	85	507	1,540	8,546
Thursday	10,042	15.5	15	12.6	96	454	1,486	7,991
Friday	10,663	16.5	27	22.7	106	490	1,511	8,529
Saturday	7,693	11.9	19	16.0	108	411	1,089	6,066
Sunday	5,543	8.6	10	8.4	78	322	753	4,380
<b>Total</b>	<b>64,705</b>	<b>100.0</b>	<b>119</b>	<b>100.0</b>	<b>637</b>	<b>3,090</b>	<b>9,320</b>	<b>51,539</b>

## 2015 Day of Week and Severity

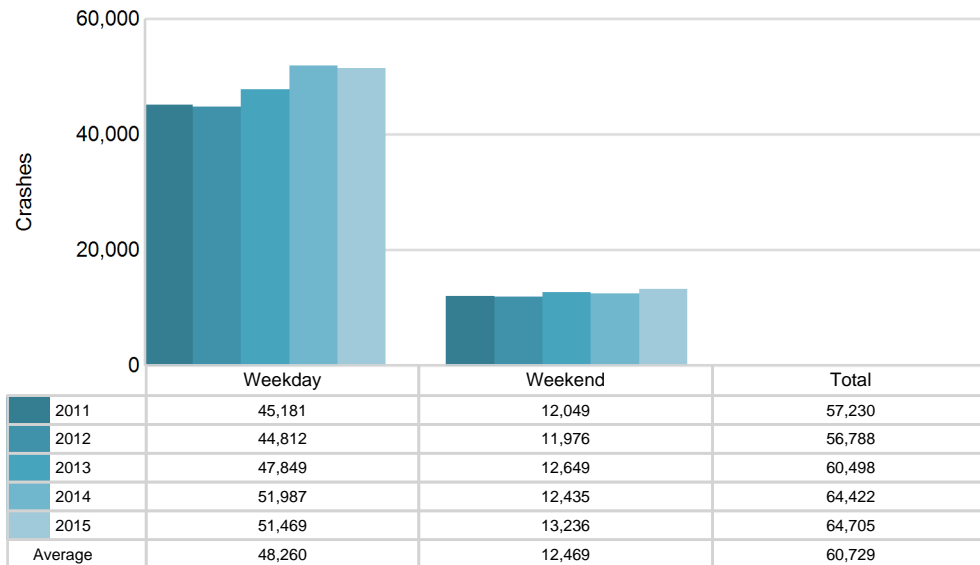


## MSP Post 21 - Metro North (continued)

### 5-Year Trend - Crashes by Weekday and Weekend

Portion of Week	2011		2012		2013		2014		2015	
	Total Crashes	Fatal Crashes	Total Crashes	Fatal Crashes	Total Crashes	Fatal Crashes	Total Crashes	Fatal Crashes	Total Crashes	Fatal Crashes
Weekday	45,181	70	44,812	69	47,849	73	51,987	70	51,469	90
Weekend	12,049	37	11,976	35	12,649	30	12,435	33	13,236	29
<b>Total</b>	<b>57,230</b>	<b>107</b>	<b>56,788</b>	<b>104</b>	<b>60,498</b>	<b>103</b>	<b>64,422</b>	<b>103</b>	<b>64,705</b>	<b>119</b>

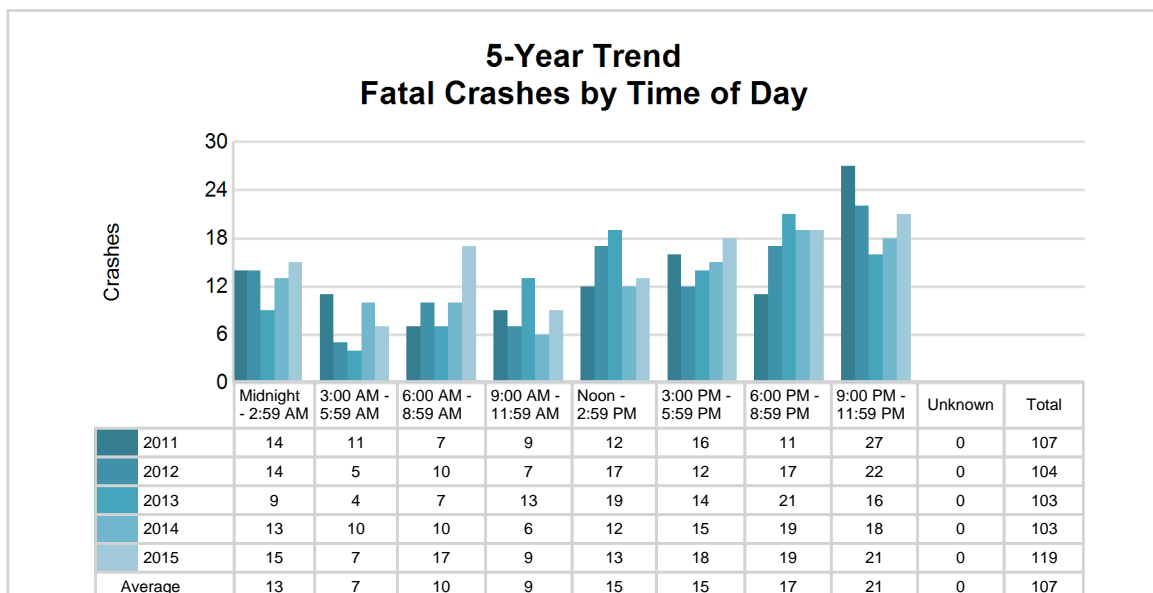
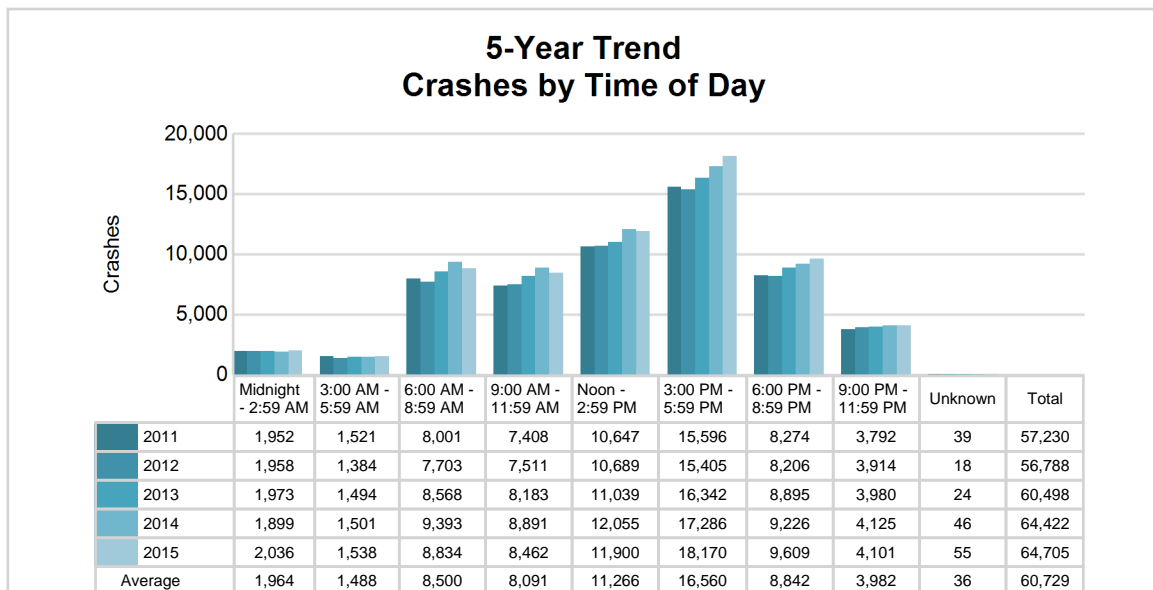
### 5-Year Crash Trends by Weekday (Monday - Friday) and Weekend (Saturday & Sunday)



## 5-Year Trend - Crashes by Time of Day

Time of Day	2011		2012		2013		2014		2015	
	Total Crashes	Fatal Crashes	Total Crashes	Fatal Crashes	Total Crashes	Fatal Crashes	Total Crashes	Fatal Crashes	Total Crashes	Fatal Crashes
Midnight - 2:59 AM	1,952	14	1,958	14	1,973	9	1,899	13	2,036	15
3:00 AM - 5:59 AM	1,521	11	1,384	5	1,494	4	1,501	10	1,538	7
6:00 AM - 8:59 AM	8,001	7	7,703	10	8,568	7	9,393	10	8,834	17
9:00 AM - 11:59 AM	7,408	9	7,511	7	8,183	13	8,891	6	8,462	9
Noon - 2:59 PM	10,647	12	10,689	17	11,039	19	12,055	12	11,900	13
3:00 PM - 5:59 PM	15,596 †	16	15,405 †	12	16,342 †	14	17,286 †	15	18,170 †	18
6:00 PM - 8:59 PM	8,274	11	8,206	17	8,895	21	9,226	19	9,609	19
9:00 PM - 11:59 PM	3,792	27	3,914	22	3,980	16	4,125	18	4,101	21
Unknown	39	0	18	0	24	0	46	0	55	0
<b>Total</b>	<b>57,230</b>	<b>107</b>	<b>56,788</b>	<b>104</b>	<b>60,498</b>	<b>103</b>	<b>64,422</b>	<b>103</b>	<b>64,705</b>	<b>119</b>

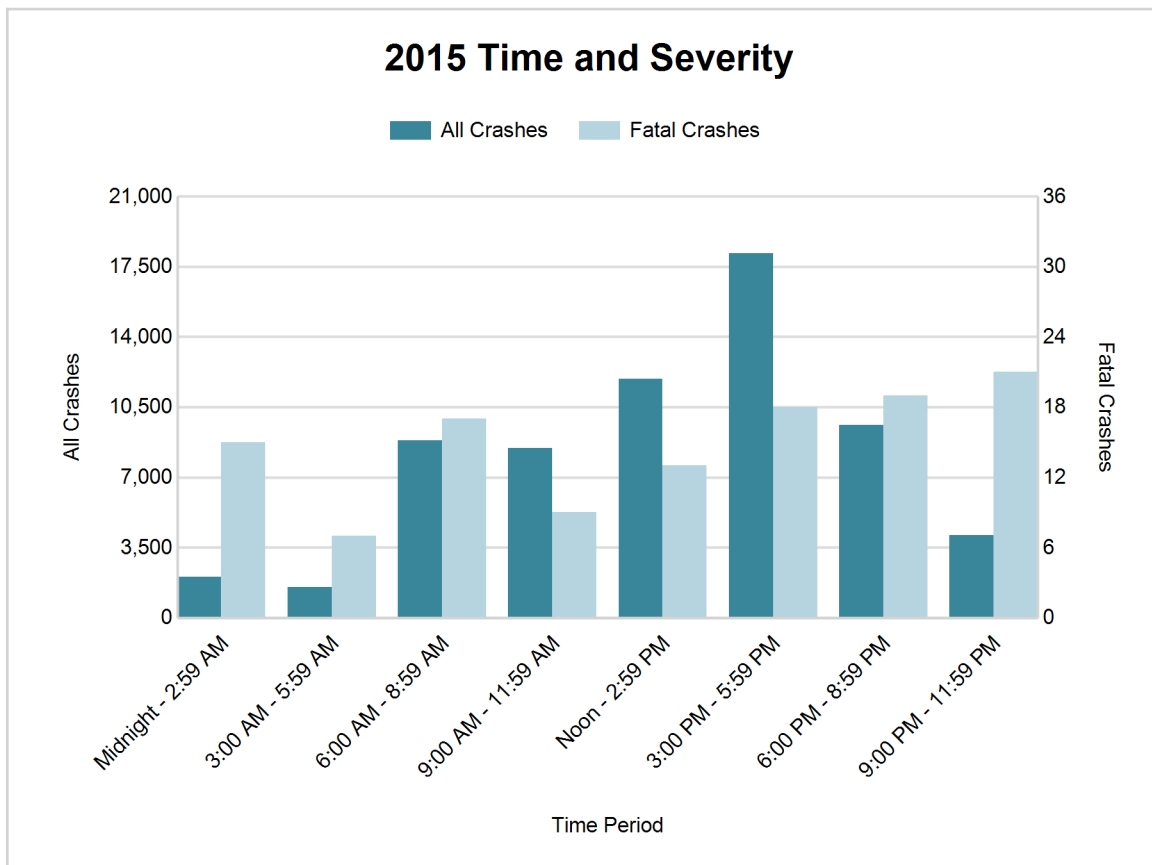
Note: † Indicates that the highest number of total crashes reported in the 5-year period occurred in the same time period



## MSP Post 21 - Metro North (continued)

### 2015 - Time and Severity

Time of Day	All Crashes		Fatal Crashes		Injury Crashes			PDO Crashes
	Number	% of Total	Number	% of Fatal	A	B	C	Number
Midnight - 2:59 AM	2,036	3.1	15	12.6	48	162	265	1,546
3:00 AM - 5:59 AM	1,538	2.4	7	5.9	28	94	164	1,245
6:00 AM - 8:59 AM	8,834	13.7	17	14.3	62	352	1,172	7,231
9:00 AM - 11:59 AM	8,462	13.1	9	7.6	85	397	1,281	6,690
Noon - 2:59 PM	11,900	18.4	13	10.9	112	598	1,850	9,327
3:00 PM - 5:59 PM	18,170	28.1	18	15.1	132	766	2,697	14,557
6:00 PM - 8:59 PM	9,609	14.9	19	16.0	100	470	1,339	7,681
9:00 PM - 11:59 PM	4,101	6.3	21	17.6	70	251	552	3,207
Unknown	55	0.1	0	0.0	0	0	0	55
<b>Total</b>	<b>64,705</b>	<b>100.0</b>	<b>119</b>	<b>100.0</b>	<b>637</b>	<b>3,090</b>	<b>9,320</b>	<b>51,539</b>

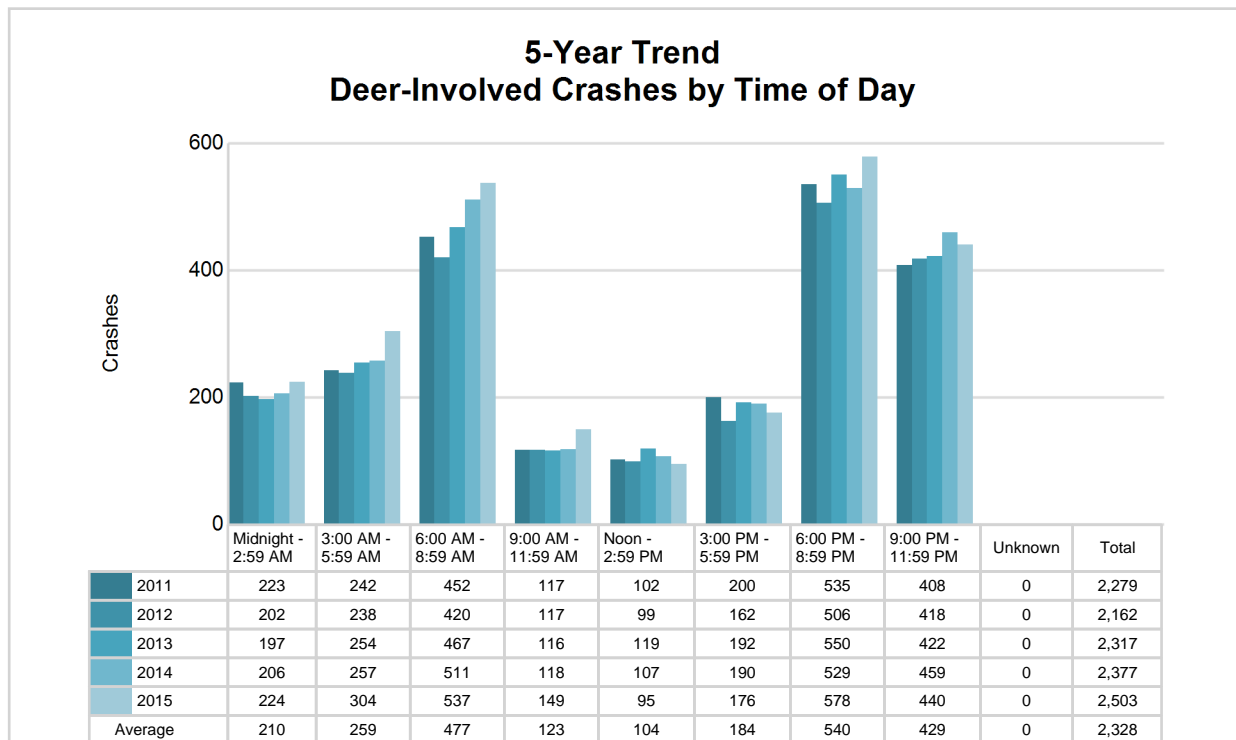




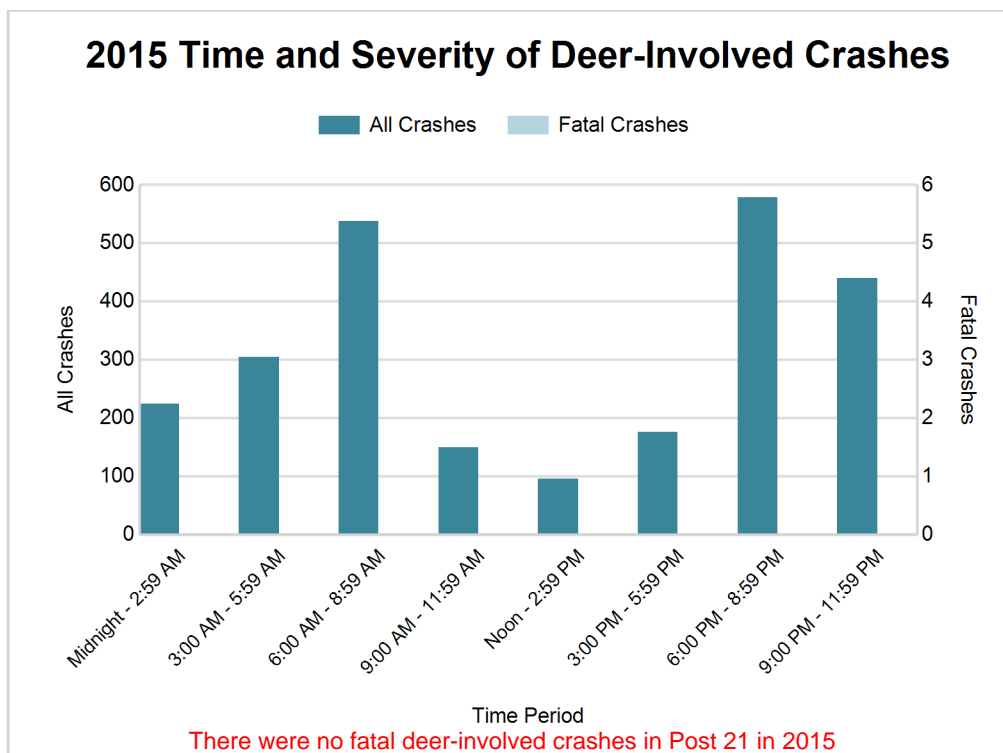
## 5-Year Trend - Deer-Involved Crashes by Time of Day

Time of Day	2011		2012		2013		2014		2015	
	Total Crashes	Fatal Crashes	Total Crashes	Fatal Crashes	Total Crashes	Fatal Crashes	Total Crashes	Fatal Crashes	Total Crashes	Fatal Crashes
Midnight - 2:59 AM	223	0	202	0	197	0	206	0	224	0
3:00 AM - 5:59 AM	242	0	238	0	254	0	257	0	304	0
6:00 AM - 8:59 AM	452	0	420	0	467	0	511	0	537	0
9:00 AM - 11:59 AM	117	0	117	0	116	0	118	0	149	0
Noon - 2:59 PM	102	0	99	0	119	0	107	0	95	0
3:00 PM - 5:59 PM	200	0	162	0	192	0	190	0	176	0
6:00 PM - 8:59 PM	535 †	0	506 †	0	550 †	0	529 †	0	578 †	0
9:00 PM - 11:59 PM	408	0	418	0	422	0	459	0	440	0
Unknown	0	0	0	0	0	0	0	0	0	0
<b>Total</b>	<b>2,279</b>	<b>0</b>	<b>2,162</b>	<b>0</b>	<b>2,317</b>	<b>0</b>	<b>2,377</b>	<b>0</b>	<b>2,503</b>	<b>0</b>

Note: † Indicates that the highest number of total crashes reported in the 5-year period occurred in the same time period



## MSP Post 21 - Metro North (continued)



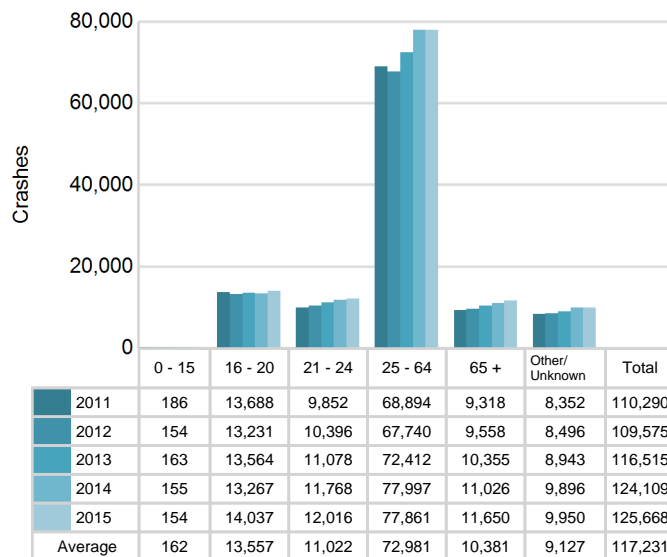
### 2015 - Reported Motor Vehicle Crashes by County

County	Crashes											Persons	
	Total	Fatal	Injury	Property Damage	Inter-state	US Route	State Route	Local Street	Alcohol-Involved	Drug-Involved	Deer-Involved	Fatalities	Injuries
Macomb	24,862	55	5,339	19,468	2,587	0	6,633	15,642	749	248	630	59	7,384
Oakland	39,843	64	7,708	32,071	6,692	2,253	6,569	24,329	1,087	252	1,873	67	10,406
<b>Total</b>	<b>64,705</b>	<b>119</b>	<b>13,047</b>	<b>51,539</b>	<b>9,279</b>	<b>2,253</b>	<b>13,202</b>	<b>39,971</b>	<b>1,836</b>	<b>500</b>	<b>2,503</b>	<b>126</b>	<b>17,790</b>

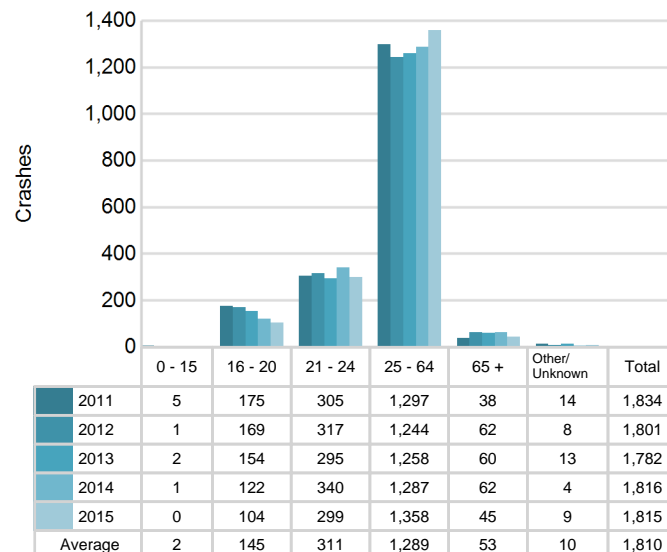
## 5-Year Trend - Drivers in Crashes Coded Drinking by Driver Age

Driver Age	2011		2012		2013		2014		2015	
	Total Drivers in Crashes	Total Drivers Coded Drinking	Total Drivers in Crashes	Total Drivers Coded Drinking	Total Drivers in Crashes	Total Drivers Coded Drinking	Total Drivers in Crashes	Total Drivers Coded Drinking	Total Drivers in Crashes	Total Drivers Coded Drinking
0 - 15	186	5	154	1	163	2	155	1	154	0
16 - 20	13,688	175	13,231	169	13,564	154	13,267	122	14,037	104
21 - 24	9,852	305	10,396	317	11,078	295	11,768	340	12,016	299
25 - 64	68,894	1,297	67,740	1,244	72,412	1,258	77,997	1,287	77,861	1,358
65 +	9,318	38	9,558	62	10,355	60	11,026	62	11,650	45
Unknown	8,352	14	8,496	8	8,943	13	9,896	4	9,950	9
<b>Total</b>	<b>110,290</b>	<b>1,834</b>	<b>109,575</b>	<b>1,801</b>	<b>116,515</b>	<b>1,782</b>	<b>124,109</b>	<b>1,816</b>	<b>125,668</b>	<b>1,815</b>

### 5-Year Trend Total Drivers in Crashes by Age



### 5-Year Trend Total Drivers Coded Drinking by Age



# MSP Post 21 - Metro North (continued)

## 2015 - Bodily Alcohol Concentration (BAC) Results Among All Vehicle Drivers in Alcohol-Involved Crashes by Age

Age Group	Drivers				BAC Result Range for Drivers Coded Drinking				
	Total Drivers in Alcohol-Involved Crashes	Total Drivers Tested in all Crashes	Total Drivers Coded Drinking, Tested	Total Drivers Coded Drinking	BAC = 0.00	BAC 0.01 g/dL to 0.07 g/dL	BAC 0.08 g/dL to 0.16 g/dL	BAC 0.17 g/dL and Above	BAC Not Reported
0 - 15	1	0	0	0	0	0	0	0	0
16 - 20	188	136	85	104	4	20	29	17	34
21 - 24	399	318	259	299	4	28	94	79	94
25 - 64	2,073	1,414	1,143	1,357	23	87	315	459	474
65 +	128	77	44	45	2	7	17	13	6
Unknown	322	5	0	9	0	0	0	0	9
<b>Total</b>	<b>3,111</b>	<b>1,950</b>	<b>1,531</b>	<b>1,814</b>	<b>33</b>	<b>142</b>	<b>455</b>	<b>568</b>	<b>617</b>

Notes: BAC measured in grams (g) per deciliter (dL).

BAC may not be reported if drivers are not tested or if the results are not available immediately (as in the case of a blood test).

A driver may be coded by the officer as drinking even though no test is administered.

## Alcohol-Involved Crashes

In 2015, there were 3,111 drivers in alcohol-involved crashes; 1,814 (58.3%) of those drivers were coded as had-been-drinking by the officer on the crash form.

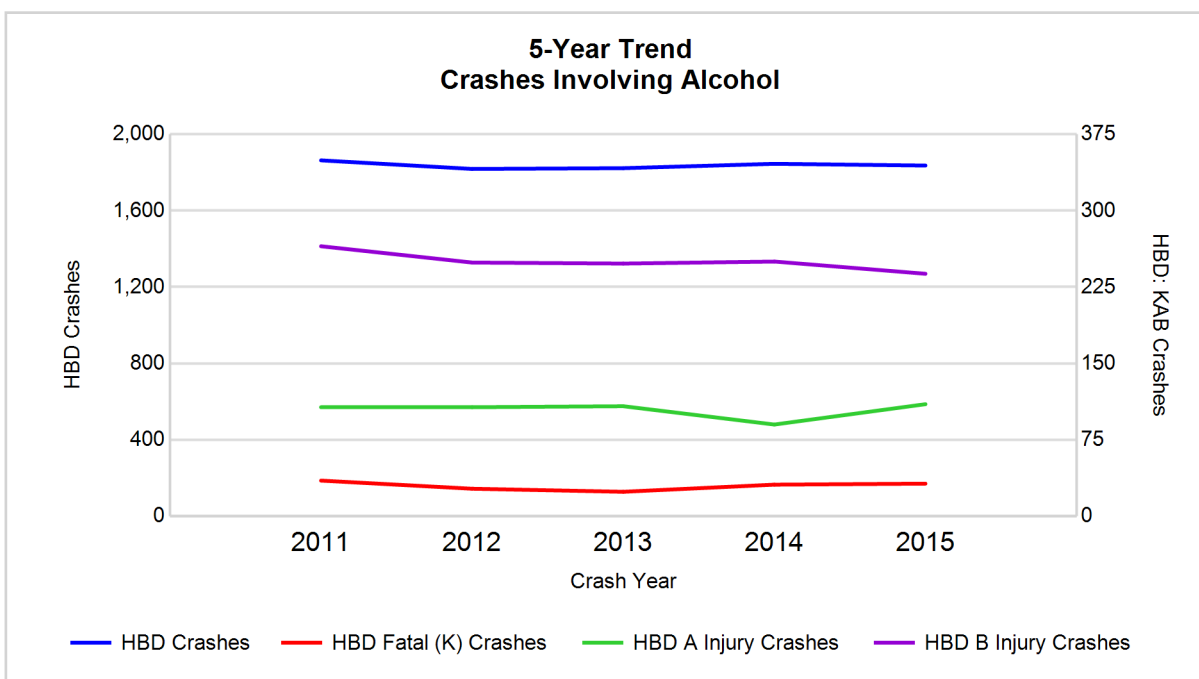
- 1,023 (56.4%) of the 1,814 drivers had a blood alcohol concentration (BAC) of 0.08 g/dL (grams per deciliter) or greater, and 568 (55.5%) of the 1,023 drivers had a BAC at or above 0.17 g/dL.
- 1,531 (84.4%) of the 1,814 drivers were coded as had-been-drinking and were tested for alcohol consumption.

## 5-Year Trend - Crashes Involving Alcohol

Year	All Crashes	HBD Crashes	% HBD	Fatal Crashes	HBD Fatal Crashes	% HBD	A Injury Crashes	HBD A Injury Crashes	% HBD	B Injury Crashes	HBD B Injury Crashes	% HBD
2011	57,230	1,863	3.3	107	35	32.7	720	107	14.9	2,875	265	9.2
2012	56,788	1,818	3.2	104	27	26.0	742	107	14.4	2,984	249	8.3
2013	60,498	1,822	3.0	103	24	23.3	718	108	15.0	3,021	248	8.2
2014	64,422	1,845	2.9	103	31	30.1	671	90	13.4	3,135	250	8.0
2015	64,705**	1,836	2.8*	119**	32	26.9	637*	110**	17.3**	3,090	238*	7.7*

Note: \* Indicates that the most recent year is the lowest number or percentage reported in the 5-year period in that column

\*\* Indicates that the most recent year is the highest number or percentage reported in the 5-year period in that column

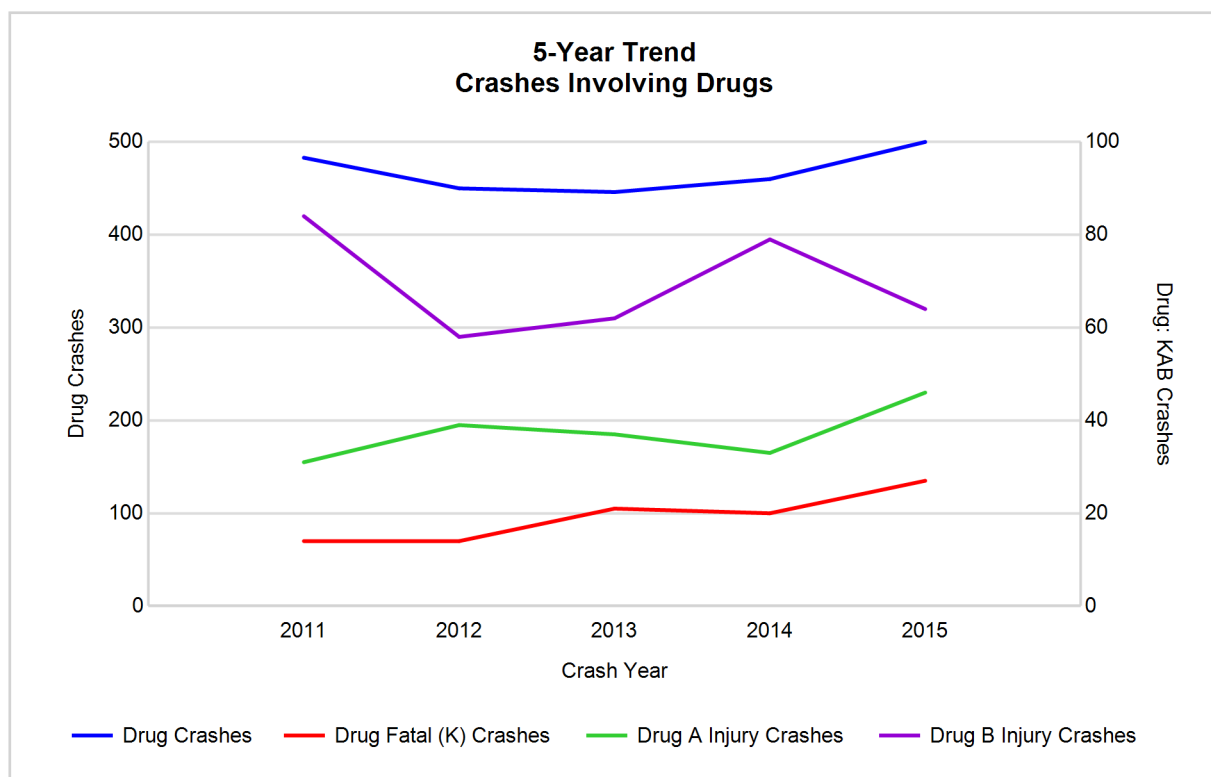


Note: Had-Been-Drinking (HBD)

## 5-Year Trend - Crashes Involving Drugs

Year	All Crashes	Drug Crashes	% Drug	Fatal Crashes	Drug Fatal Crashes	% Drug	A Injury Crashes	Drug A Injury Crashes	% Drug	B Injury Crashes	Drug B Injury Crashes	% Drug
2011	57,230	483	0.8	107	14	13.1	720	31	4.3	2,875	84	2.9
2012	56,788	450	0.8	104	14	13.5	742	39	5.3	2,984	58	1.9
2013	60,498	446	0.7	103	21	20.4	718	37	5.2	3,021	62	2.1
2014	64,422	460	0.7	103	20	19.4	671	33	4.9	3,135	79	2.5
2015	64,705**	500**	0.8	119**	27**	22.7**	637*	46**	7.2**	3,090	64	2.1

Note: \* Indicates that the most recent year is the lowest number or percentage reported in the 5-year period in that column  
 \*\* Indicates that the most recent year is the highest number or percentage reported in the 5-year period in that column



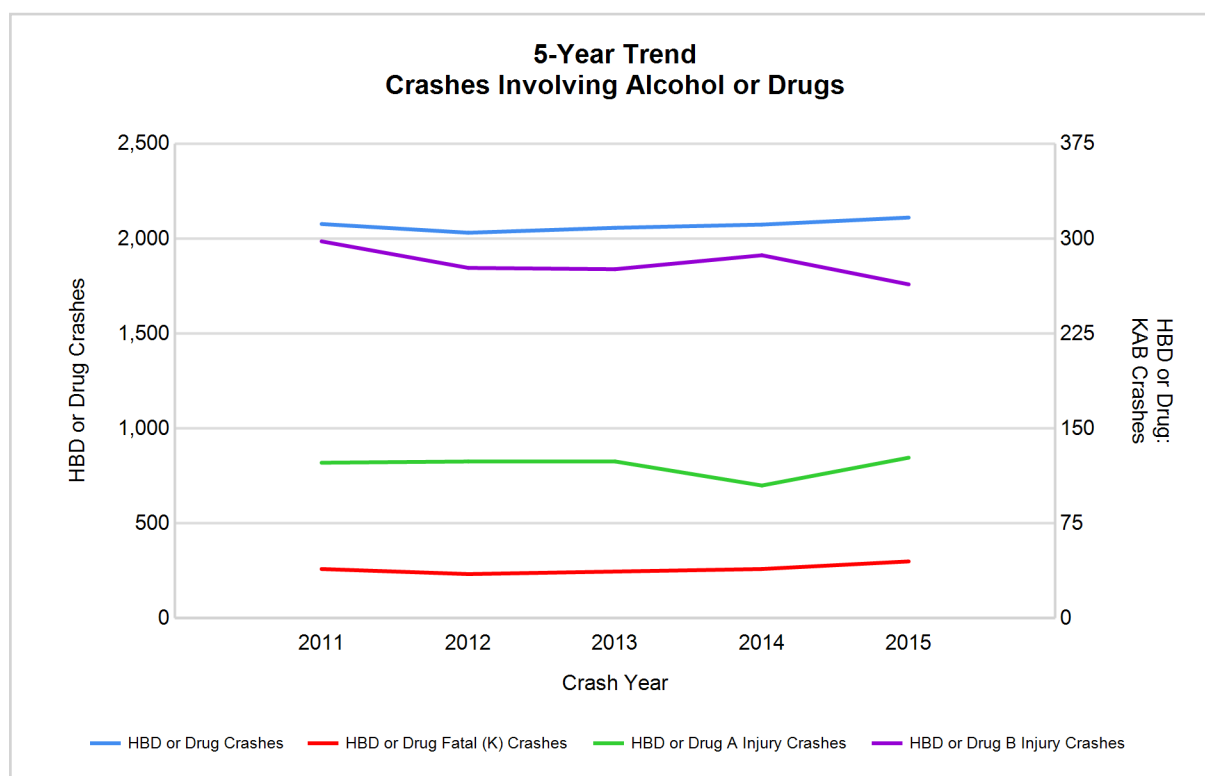
# MSP Post 21 - Metro North (continued)

## 5-Year Trend - Crashes Involving Alcohol or Drugs

Year	All Crashes	HBD or Drug Crashes	% HBD or Drug	Fatal Crashes	HBD or Drug Fatal Crashes	% HBD or Drug	A Injury Crashes	HBD or Drug A Injury Crashes	% HBD or Drug	B Injury Crashes	HBD or Drug B Injury Crashes	% HBD or Drug
2011	57,230	2,078	3.6	107	39	36.4	720	123	17.1	2,875	298	10.4
2012	56,788	2,032	3.6	104	35	33.7	742	124	16.7	2,984	277	9.3
2013	60,498	2,058	3.4	103	37	35.9	718	124	17.3	3,021	276	9.1
2014	64,422	2,075	3.2	103	39	37.9	671	105	15.6	3,135	287	9.2
2015	64,705**	2,112**	3.3	119**	45**	37.8	637*	127**	19.9**	3,090	264*	8.5*

Note: \* Indicates that the most recent year is the lowest number or percentage reported in the 5-year period in that column

\*\* Indicates that the most recent year is the highest number or percentage reported in the 5-year period in that column



Note: Had-Been-Drinking (HBD)

# MSP Post 21 - Metro North (continued)

13

## 2015 - Restraints Worn Among Vehicle Drivers and Injured Passengers by Vehicle Type

Vehicle Type	Total Occupants			Fatalities			A - Incapacitating			B - Non-incapacitating			C - Possible Injury			No Injury		
	Total	Used Restraint	%	Total	Used Restraint	%	Total	Used Restraint	%	Total	Used Restraint	%	Total	Used Restraint	%	Total	Used Restraint	%
Passenger car & station wagon	107,003	97,871	91.5	63	37	58.7	490	382	78.0	3,010	2,799	93.0	11,337	10,921	96.3	85,578	83,692	97.8
Van & motorhome	4,890	4,406	90.1	2	1	50.0	27	20	74.1	124	107	86.3	556	527	94.8	3,865	3,750	97.0
Pickup truck	11,151	9,827	88.1	11	5	45.5	53	35	66.0	180	161	89.4	710	674	94.9	9,213	8,949	97.1
Small truck under 10,000 lbs. GVWR	1,058	964	91.1	0	0	0.0	4	1	25.0	22	21	95.5	88	85	96.6	874	856	97.9
Cycle	534	378	70.8	15	10	66.7	78	52	66.7	190	141	74.2	126	91	72.2	116	84	72.4
Moped	32	10	31.3	0	0	0.0	4	3	75.0	14	3	21.4	8	4	50.0	3	0	0.0
Go Cart	0	0	0.0	0	0	0.0	0	0	0.0	0	0	0.0	0	0	0.0	0	0	0.0
Snowmobile	2	0	0.0	0	0	0.0	0	0	0.0	0	0	0.0	1	0	0.0	1	0	0.0
Off-Road Vehicle (ORV) & All-Terrain Vehicle (ATV)	20	4	20.0	0	0	0.0	4	0	0.0	6	3	50.0	3	0	0.0	7	1	14.3
Other	393	262	66.7	0	0	0.0	2	1	50.0	6	4	66.7	24	16	66.7	269	240	89.2
Truck/bus over 10,000 lbs.	2,493	2,232	89.5	2	0	0.0	3	1	33.3	11	8	72.7	68	42	61.8	2,264	2,181	96.3
Unknown	1,776	45	2.5	0	0	0.0	0	0	0.0	2	2	100.0	2	0	0.0	84	34	40.5
<b>Total</b>	<b>129,352</b>	<b>115,999</b>	<b>89.7</b>	<b>93</b>	<b>53</b>	<b>57.0</b>	<b>665</b>	<b>495</b>	<b>74.4</b>	<b>3,565</b>	<b>3,249</b>	<b>91.1</b>	<b>12,923</b>	<b>12,360</b>	<b>95.6</b>	<b>102,274</b>	<b>99,787</b>	<b>97.6</b>

Note: Restraint Use includes shoulder belt only used, lap belt only used, both lap and shoulder belts used, child restraint used, restraint failure, and helmet worn.

## 2015 - Restraints Worn Among Vehicle Drivers and Injured Passengers by Age

Age Group	Total Occupants			Fatalities			A - Incapacitating			B - Non-incapacitating			C - Possible Injury			No Injury		
	Total	Used Restraint	%	Total	Used Restraint	%	Total	Used Restraint	%	Total	Used Restraint	%	Total	Used Restraint	%	Total	Used Restraint	%
0 - 15	1,096	971	88.6	2	2	100.0	21	12	57.1	176	148	84.1	765	697	91.1	130	112	86.2
16 - 20	14,532	14,080	96.9	13	5	38.5	80	54	67.5	499	449	90.0	1,305	1,217	93.3	12,603	12,351	98.0
21 - 24	12,322	11,872	96.3	10	4	40.0	65	44	67.7	416	370	88.9	1,155	1,088	94.2	10,651	10,364	97.3
25 - 64	79,397	77,167	97.2	48	27	56.3	414	310	74.9	2,044	1,876	91.8	8,200	7,891	96.2	68,537	67,050	97.8
65 +	12,047	11,832	98.2	20	15	75.0	85	75	88.2	427	406	95.1	1,492	1,467	98.3	10,016	9,868	98.5
Unknown	9,958	77	0.8	0	0	0.0	0	0	0.0	3	0	0.0	6	0	0.0	337	42	12.5
<b>Total</b>	<b>129,352</b>	<b>115,999</b>	<b>89.7</b>	<b>93</b>	<b>53</b>	<b>57.0</b>	<b>665</b>	<b>495</b>	<b>74.4</b>	<b>3,565</b>	<b>3,249</b>	<b>91.1</b>	<b>12,923</b>	<b>12,360</b>	<b>95.6</b>	<b>102,274</b>	<b>99,787</b>	<b>97.6</b>

Note: Restraint Use includes shoulder belt only used, lap belt only used, both lap and shoulder belts used, child restraint used, restraint failure, and helmet worn.

## MSP Post 21 - Metro North (continued)

## 5-Year Trend - Restraint Use Among Drivers

Restraint Use	2011			2012			2013			2014			2015		
	Drivers	Fatal Drivers	Injured Drivers	Drivers	Fatal Drivers	Injured Drivers	Drivers	Fatal Drivers	Injured Drivers	Drivers	Fatal Drivers	Injured Drivers	Drivers	Fatal Drivers	Injured Drivers
No belts available	140	1	20	237	0	31	114	1	17	82	1	13	178	1	26
Shoulder belt only used	40	1	4	37	0	8	60	0	5	21	0	2	20	0	3
Lap belt only used	66	0	7	67	0	10	96	0	14	80	0	10	121	0	20
Both lap & shoulder belts used	98,896	29	11,484	98,046	36	11,228	104,670	32	11,694	111,383	30	12,198	112,250	34	12,588
No belts used	541	14	251	510	14	236	450	16	221	409	14	184	434	22	185
Child restraint used	1	0	0	0	0	0	0	0	0	1	0	0	0	0	0
Child restraint not used, unavailable or improper use	1	0	0	1	0	0	0	0	0	1	0	0	3	0	1
Restraint failure	2	0	1	4	0	1	4	0	3	3	0	1	3	0	0
Restraint use unknown	9,004	7	205	8,971	3	201	9,388	8	201	10,275	5	194	9,800	6	285
Helmet worn	434	13	323	424	7	320	394	13	287	330	8	243	372	9	278
Helmet not worn	27	1	22	139	7	104	129	6	103	136	5	102	158	5	121
Helmet use unknown	12	0	4	21	1	12	15	0	8	22	2	12	25	0	12
Uncoded & errors	1,126	0	10	1,118	0	1	1,195	0	0	1,366	0	1	2,304	0	2
<b>Total</b>	<b>110,290</b>	<b>66</b>	<b>12,331</b>	<b>109,575</b>	<b>68</b>	<b>12,152</b>	<b>116,515</b>	<b>76</b>	<b>12,553</b>	<b>124,109</b>	<b>65</b>	<b>12,960</b>	<b>125,668</b>	<b>77</b>	<b>13,521</b>

## 5-Year Trend - Restraint Use Among Drivers Coded Drinking

Restraint Use	2011			2012			2013			2014			2015		
	Drivers	Fatal Drivers	Injured Drivers	Drivers	Fatal Drivers	Injured Drivers	Drivers	Fatal Drivers	Injured Drivers	Drivers	Fatal Drivers	Injured Drivers	Drivers	Fatal Drivers	Injured Drivers
No belts available	5	0	2	6	0	1	10	0	7	1	0	0	7	0	2
Shoulder belt only used	2	0	0	0	0	0	2	0	0	1	0	1	1	0	1
Lap belt only used	2	0	2	0	0	0	0	0	0	1	0	0	0	0	0
Both lap & shoulder belts used	1,360	2	315	1,406	7	324	1,427	4	323	1,481	2	328	1,444	5	300
No belts used	118	5	68	114	5	66	88	3	57	81	6	53	86	7	52
Child restraint used	0	0	0	0	0	0	0	0	0	0	0	0	0	0	0
Child restraint not used, unavailable or improper use	0	0	0	0	0	0	0	0	0	0	0	0	0	0	0
Restraint failure	0	0	0	0	0	0	1	0	1	0	0	0	0	0	0
Restraint use unknown	311	1	71	238	0	68	232	2	67	222	1	50	246	3	72
Helmet worn	27	5	18	20	2	14	8	0	7	13	2	9	15	1	11
Helmet not worn	4	0	4	13	2	10	12	1	10	15	1	12	14	1	11
Helmet use unknown	2	0	1	3	0	3	2	0	1	1	0	1	1	0	0
Uncoded & errors	3	0	0	1	0	0	0	0	0	0	0	0	1	0	0
<b>Total</b>	<b>1,834</b>	<b>13</b>	<b>481</b>	<b>1,801</b>	<b>16</b>	<b>486</b>	<b>1,782</b>	<b>10</b>	<b>473</b>	<b>1,816</b>	<b>12</b>	<b>454</b>	<b>1,815</b>	<b>17</b>	<b>449</b>

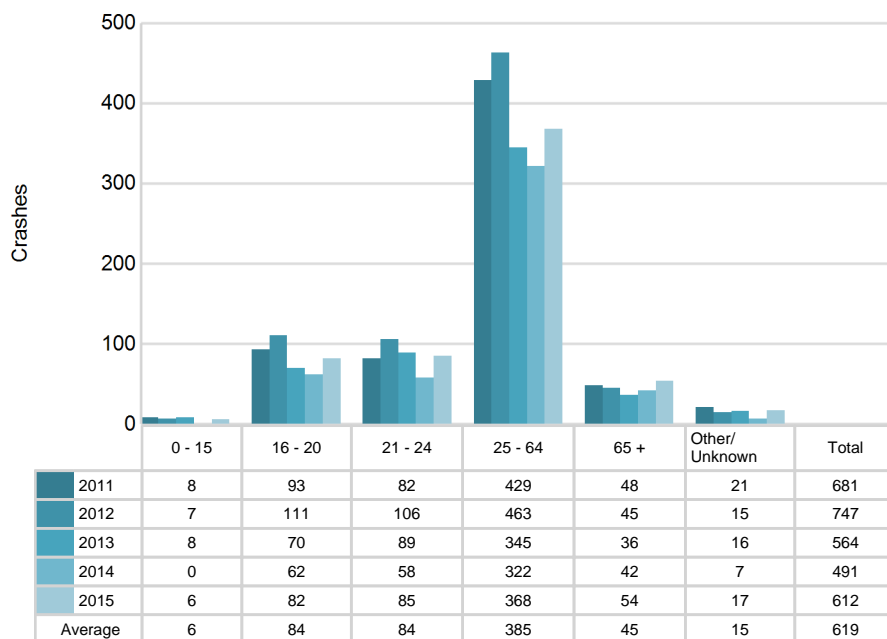


## 5-Year Trend - Seatbelt Not Used Among Drivers by Age

Age Group	2011			2012			2013			2014			2015		
	Drivers	Fatal Drivers	Injured Drivers	Drivers	Fatal Drivers	Injured Drivers	Drivers	Fatal Drivers	Injured Drivers	Drivers	Fatal Drivers	Injured Drivers	Drivers	Fatal Drivers	Injured Drivers
0 - 15	8	0	4	7	0	2	8	0	2	0	0	0	6	0	0
16 - 20	93	1	52	111	2	39	70	2	34	62	0	27	82	3	29
21 - 24	82	3	30	106	1	52	89	3	51	58	2	22	85	4	37
25 - 64	429	9	161	463	8	155	345	10	135	322	9	132	368	14	124
65 +	48	2	24	45	3	18	36	2	15	42	4	16	54	2	21
Unknown	21	0	0	15	0	1	16	0	1	7	0	0	17	0	0
<b>Total</b>	<b>681</b>	<b>15</b>	<b>271</b>	<b>747</b>	<b>14</b>	<b>267</b>	<b>564</b>	<b>17</b>	<b>238</b>	<b>491</b>	<b>15</b>	<b>197</b>	<b>612</b>	<b>23</b>	<b>211</b>

Note: Seatbelt Not Used includes no belts available or no belts used.

## 5-Year Trend Driver Seatbelt Not Used



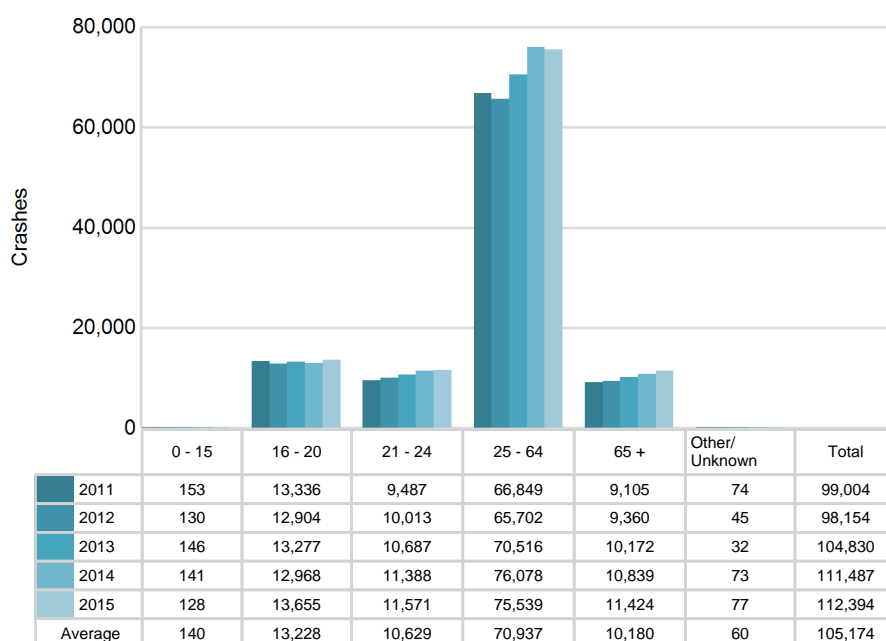
# MSP Post 21 - Metro North (continued)

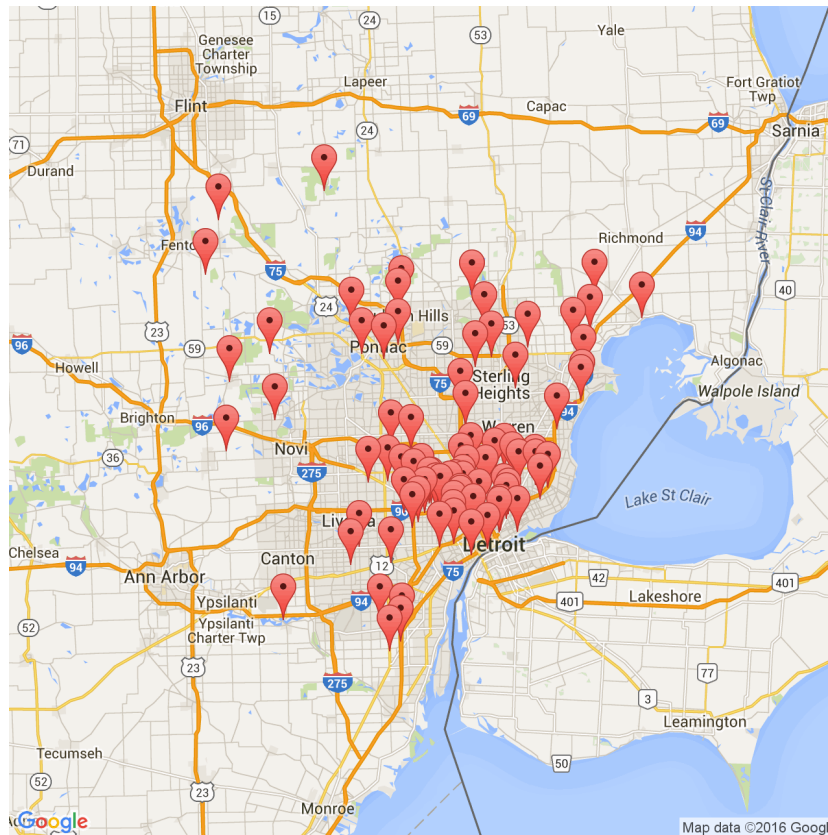
## 5-Year Trend - Seatbelt Used Among Drivers by Age

Age Group	2011			2012			2013			2014			2015		
	Drivers	Fatal Drivers	Injured Drivers	Drivers	Fatal Drivers	Injured Drivers	Drivers	Fatal Drivers	Injured Drivers	Drivers	Fatal Drivers	Injured Drivers	Drivers	Fatal Drivers	Injured Drivers
0 - 15	153	0	16	130	0	13	146	0	7	141	0	14	128	0	16
16 - 20	13,336	2	1,239	12,904	4	1,299	13,277	1	1,259	12,968	0	1,200	13,655	3	1,308
21 - 24	9,487	2	1,053	10,013	4	1,127	10,687	1	1,157	11,388	2	1,222	11,571	2	1,213
25 - 64	66,849	18	7,931	65,702	21	7,547	70,516	20	7,920	76,078	17	8,423	75,539	17	8,524
65 +	9,105	8	1,253	9,360	7	1,258	10,172	10	1,370	10,839	11	1,349	11,424	12	1,550
Unknown	74	0	4	45	0	3	32	0	3	73	0	3	77	0	0
<b>Total</b>	<b>99,004</b>	<b>30</b>	<b>11,496</b>	<b>98,154</b>	<b>36</b>	<b>11,247</b>	<b>104,830</b>	<b>32</b>	<b>11,716</b>	<b>111,487</b>	<b>30</b>	<b>12,211</b>	<b>112,394</b>	<b>34</b>	<b>12,611</b>

Note: Seatbelt Used includes shoulder belt only used, lap belt only used, both lap and shoulder belts used, and restraint failure.

## 5-Year Trend Driver Seatbelt Used





The picture above represents all 2015 alcohol-involved fatal crashes in Post 21.

In 2015, there were 1,836 alcohol-involved crashes in Post 21:

32	K - Fatal Crashes
110	A - Incapacitating Injury Crashes
238	B - Non-incapacitating Injury Crashes
337	C - Possible Injury Crashes
1,119	O - Property Damage Only/No Injury Crashes

### Office of Highway Safety Planning

Physical Address:  
7150 Harris Drive  
Dimondale, Michigan 48821

Mailing Address:  
P.O. Box 30634  
Lansing, Michigan 48909

Phone: (517) 284-3140  
Fax: (517) 284-3151

Find us on the web:  
[MichiganTrafficCrashFacts.org](http://MichiganTrafficCrashFacts.org)

