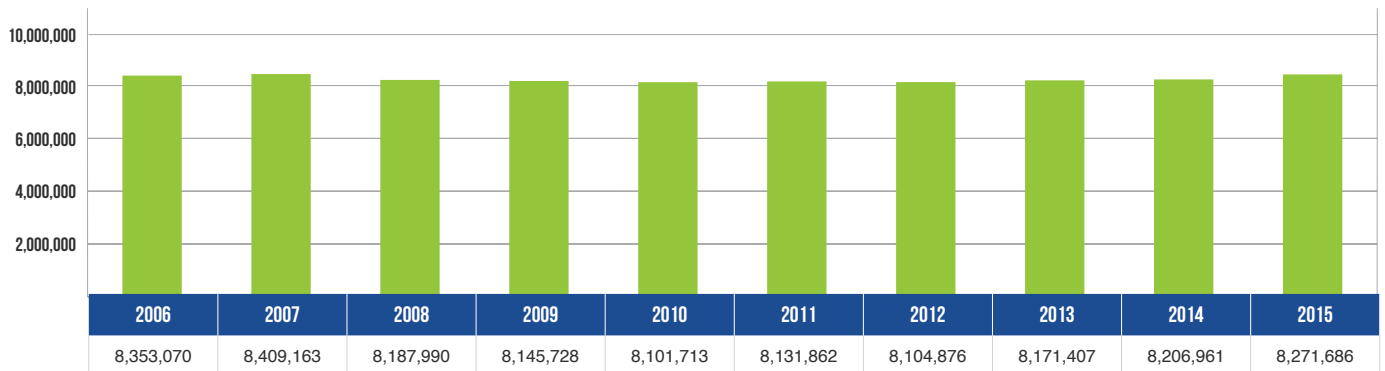


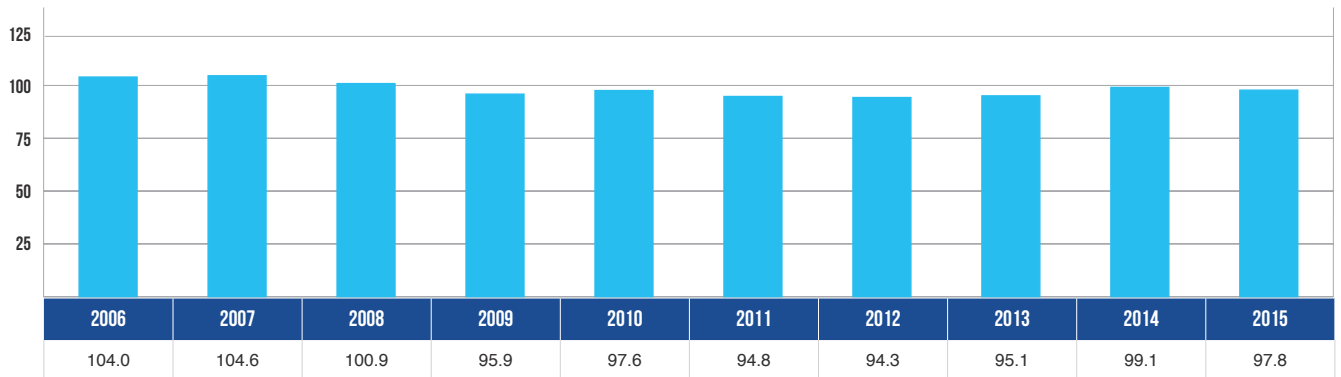
10 YEAR TRENDS-STATEWIDE

VEHICLE REGISTRATIONS



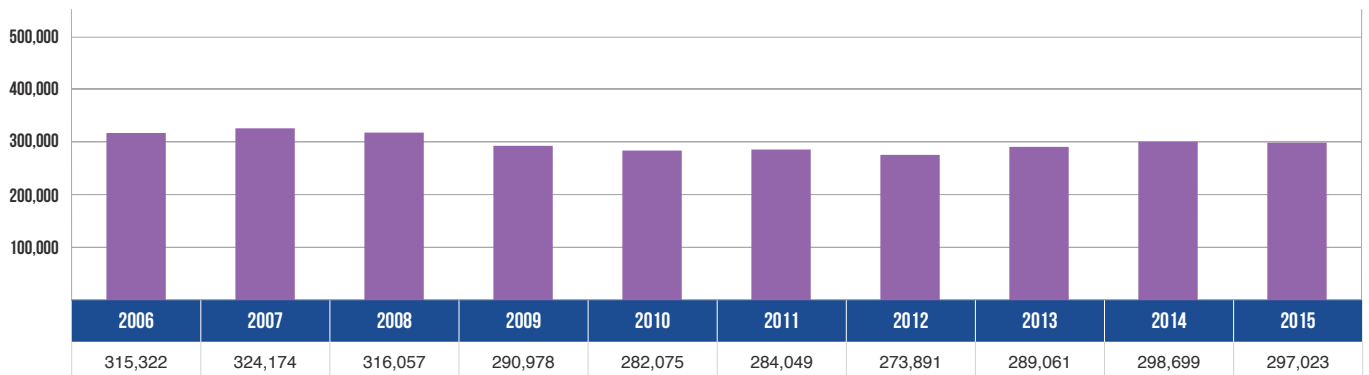
Vehicle registrations decreased 1.0 percent over the 10-year period.

VEHICLE MILES TRAVELED



Vehicle miles traveled decreased 6.0 percent over the 10-year period.

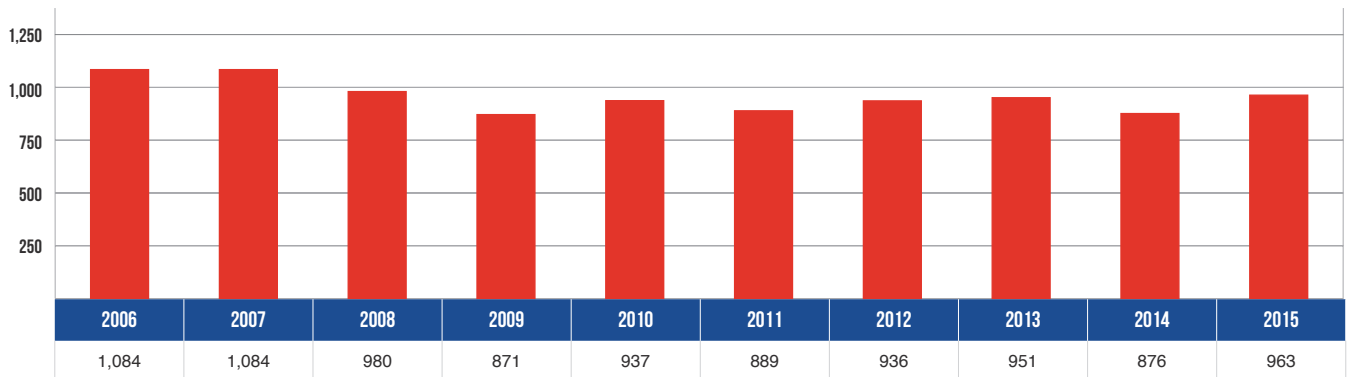
CRASHES



There were 297,023 total crashes statewide in 2015 – a 5.8 percent decrease from 2006.

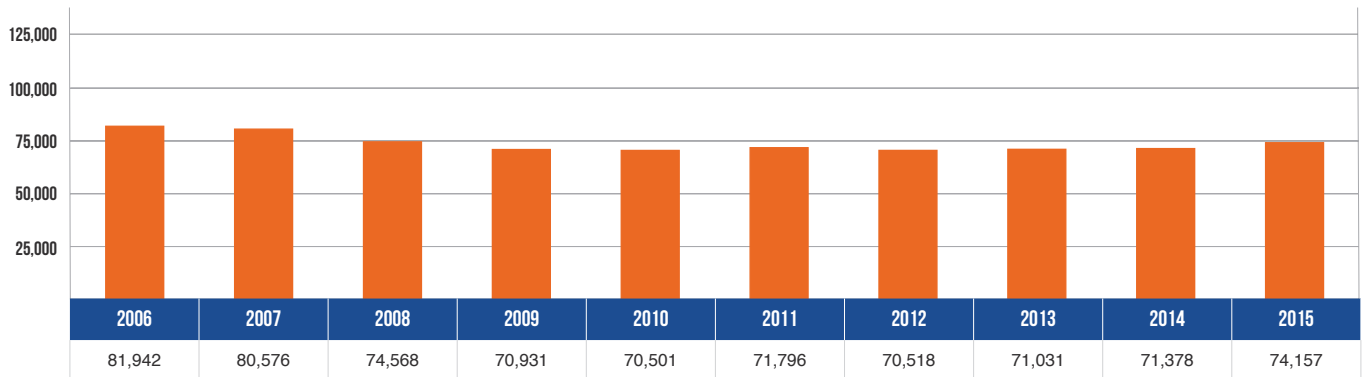
10 YEAR TRENDS-STATEWIDE (CONTINUED)

DEATHS



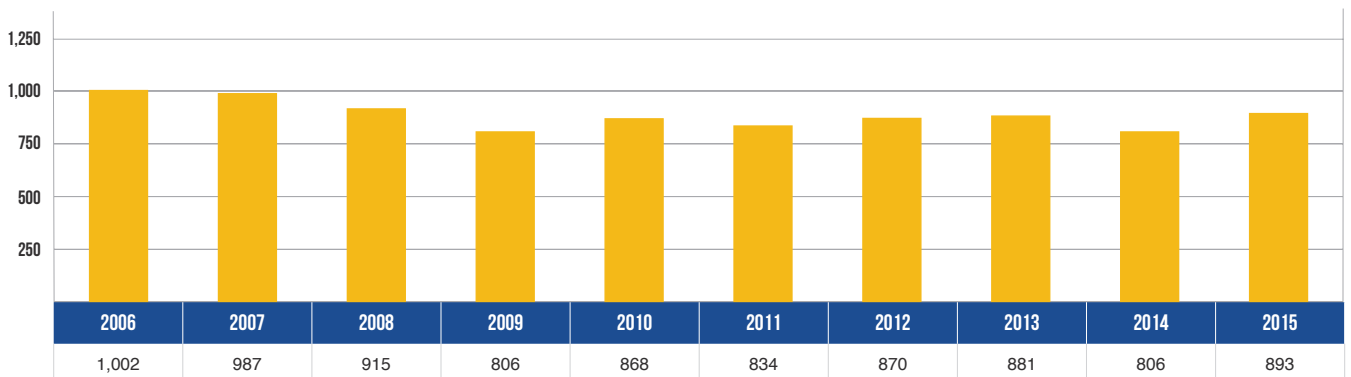
In 2015, 963 people died in motor vehicle crashes – a decrease of 11.2 percent from 2006.

INJURIES



In 2015, 74,157 people received injuries in motor vehicle crashes – down 9.5 percent from 81,942 in 2006.

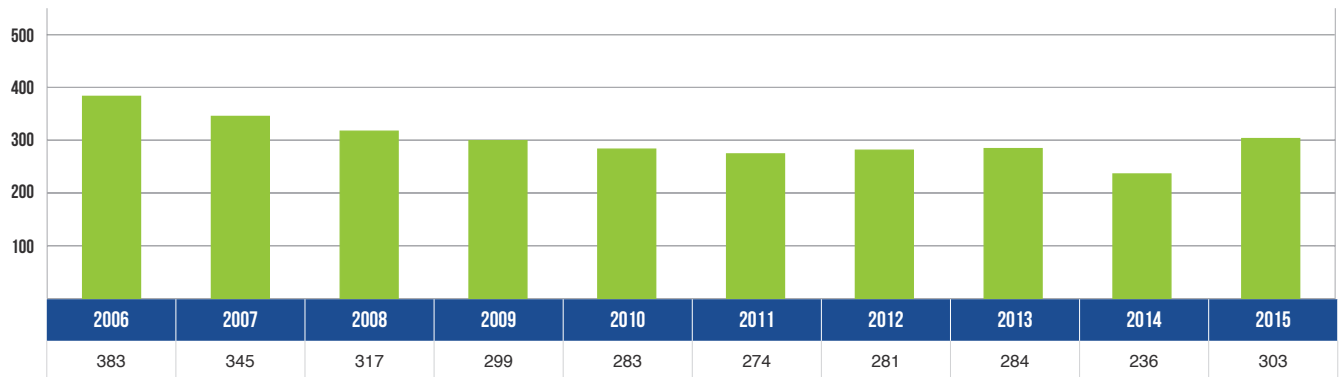
FATAL CRASHES



In 2015, there were 893 fatal crashes – down 10.9 percent from 1,002 in 2006.

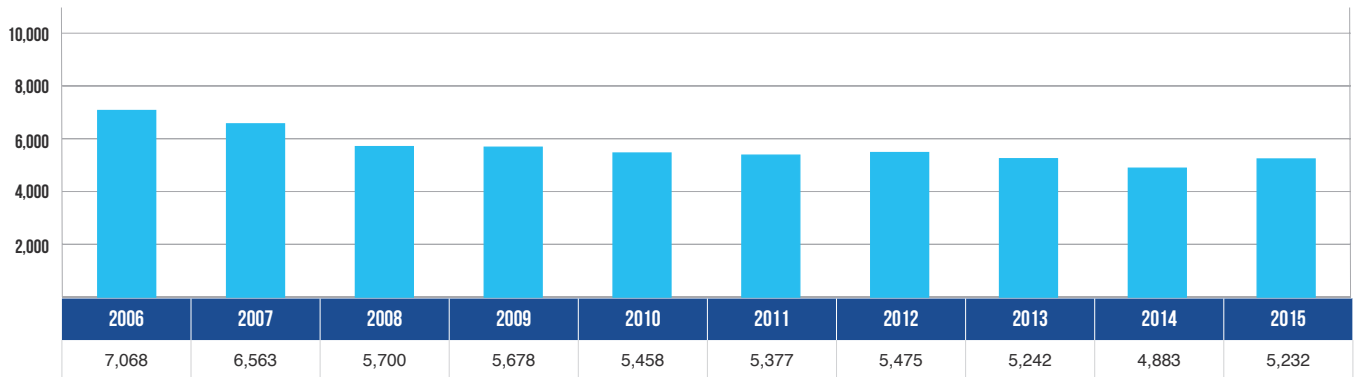
10 YEAR TRENDS-STATEWIDE (CONTINUED)

ALCOHOL-INVOLVED DEATHS



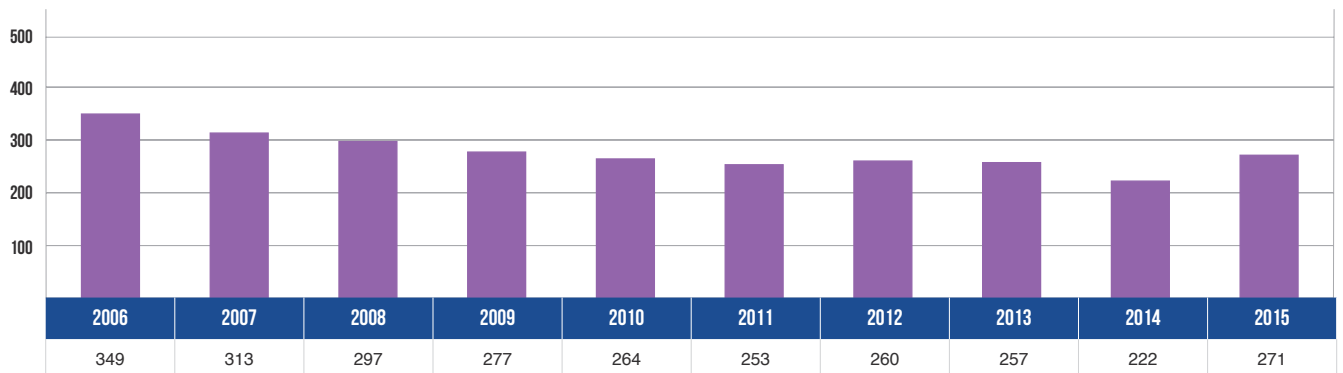
There were 303 deaths in alcohol-involved crashes in 2015 – down 20.9 percent from 2006.

ALCOHOL-INVOLVED INJURIES



There were 5,232 injuries in alcohol-involved crashes in 2015 – down 26.0 percent from 2006.

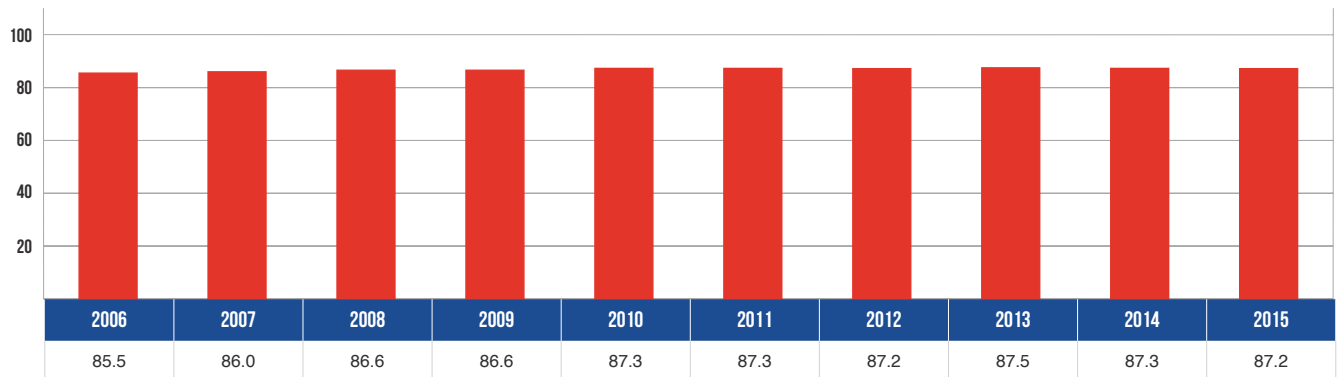
ALCOHOL-INVOLVED FATAL CRASHES



There were 271 injuries in alcohol-involved fatal crashes in 2015 – down 22.3 percent from 2006.

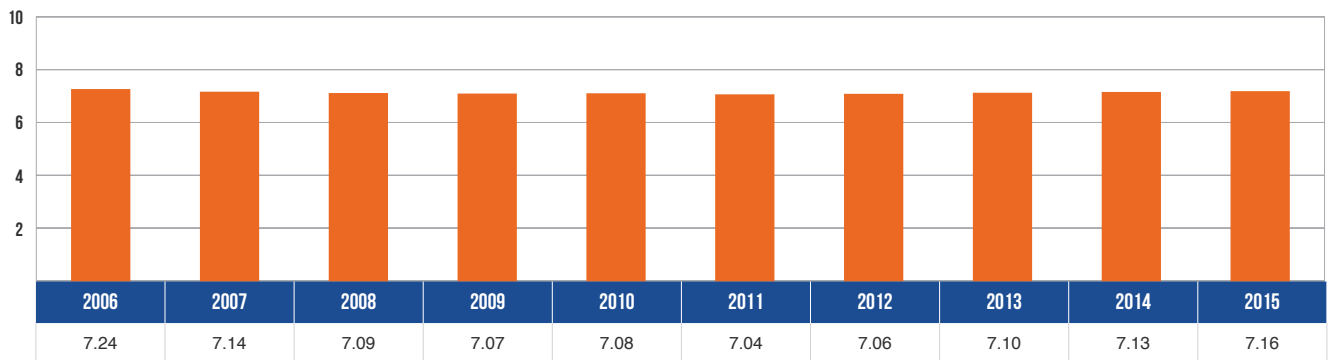
10 YEAR TRENDS-STATEWIDE (CONTINUED)

RESTRAINT USAGE IN CRASHES



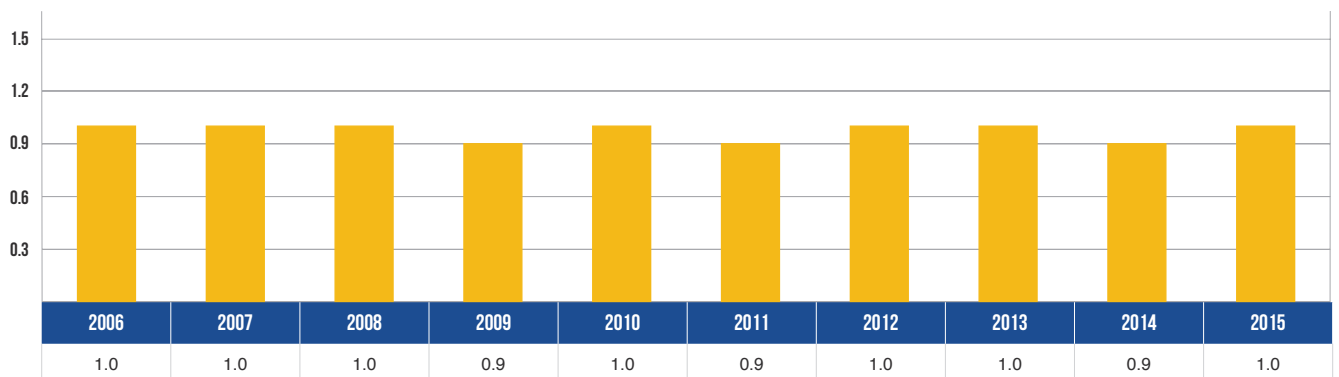
The percentage of motor vehicle occupants using restraints as reported by police in traffic crashes increased 2.0 percent over the last ten years.

DRIVERS IN MICHIGAN



There were 7,158,316 licensed drivers on Michigan roadways in 2015 – a decrease of 1.1 percent from 2006.

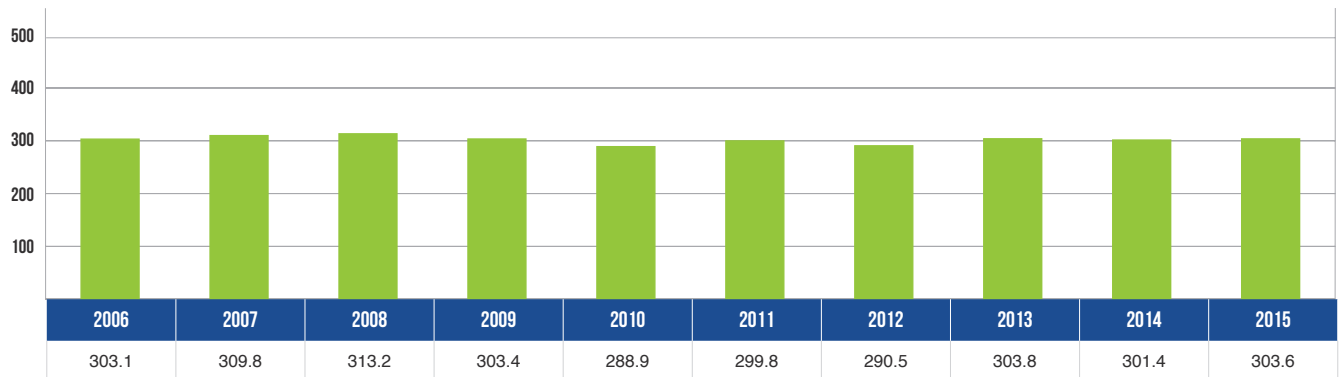
MILEAGE DEATH RATE



The 1.0 death rate in 2015 was equal to the death rate in 2006.

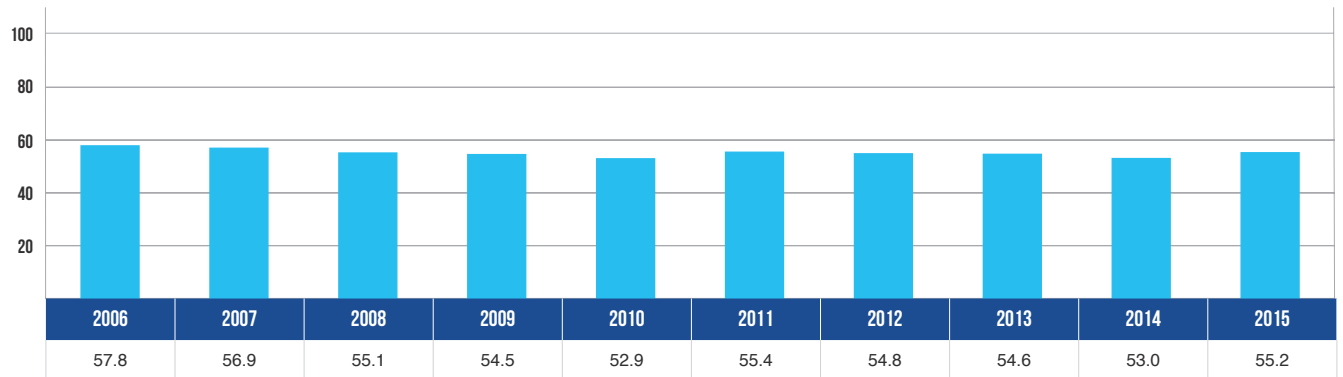
10 YEAR TRENDS-STATEWIDE (CONTINUED)

TOTAL CRASH RATE



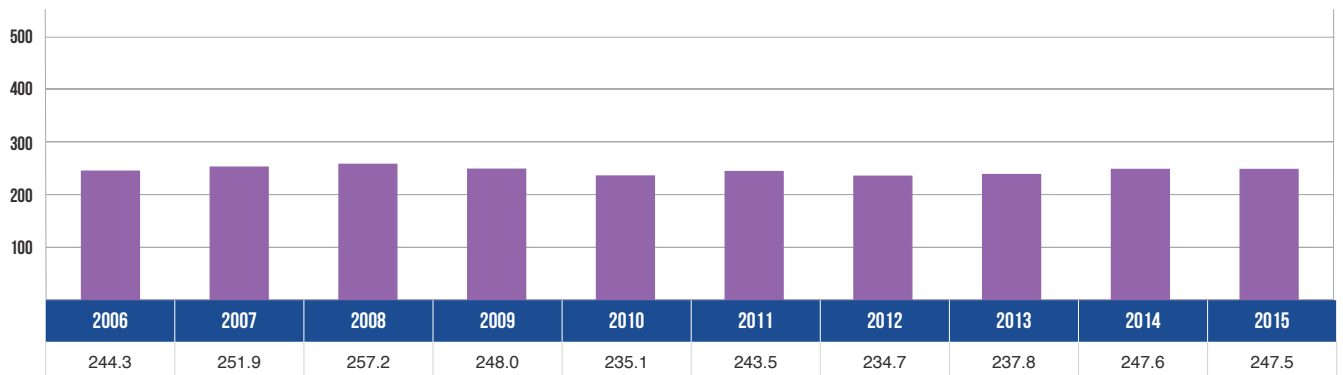
The 10-year total crash rate of 303.6 in 2015 was a 0.2 percent increase from 2006.

INJURY CRASH RATE



The 10-year injury crash rate of 55.2 in 2015 was a 4.5 percent decrease from 2006.

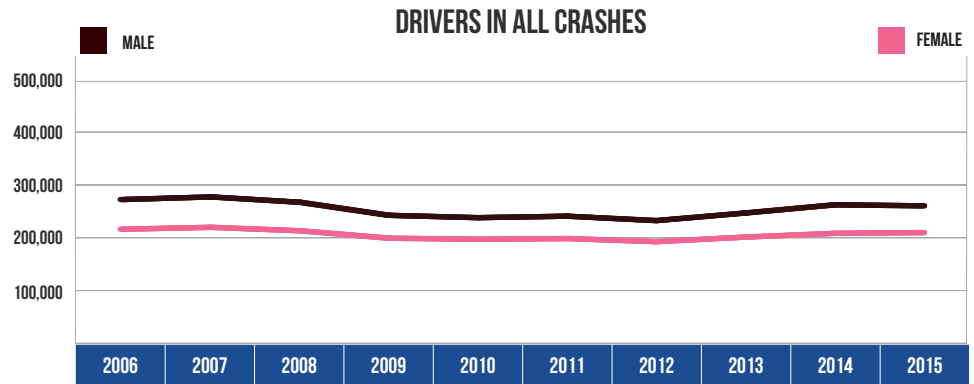
PROPERTY DAMAGE CRASH RATE



The property damage crash rate of 247.5 in 2015 was a 1.3 percent increase from 2006.

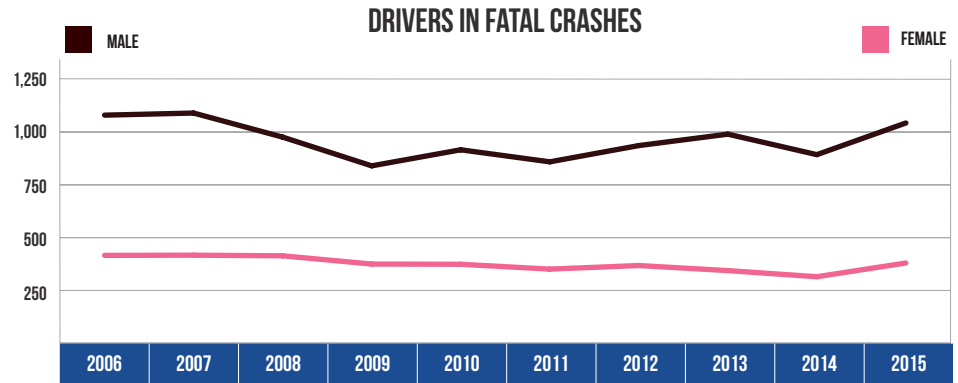
10 YEAR TRENDS-STATEWIDE (CONTINUED)

DRIVERS IN ALL CRASHES		
Year	Male	Female
2006	272,328	216,196
2007	277,353	219,781
2008	267,186	213,223
2009	242,490	199,166
2010	238,048	197,183
2011	240,850	198,488
2012	232,475	192,605
2013	246,908	201,264
2014	262,359	208,359
2015	260,508	209,843



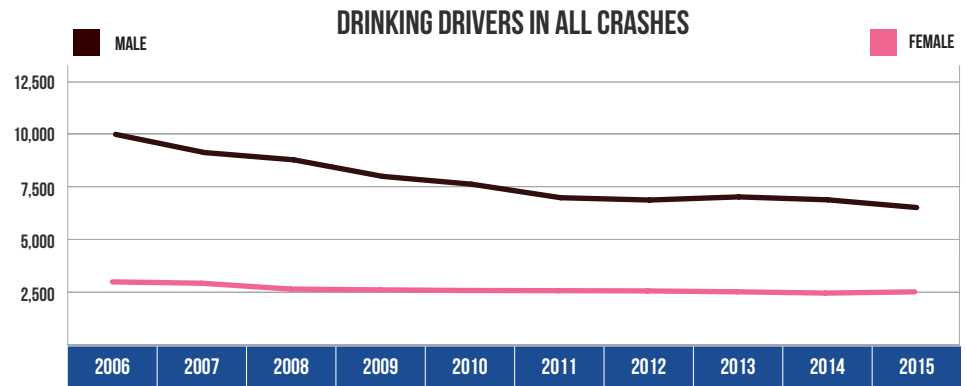
Male drivers accounted for 55.4 percent of all drivers in crashes during 2015, which was down from 55.7 percent in 2006. Female drivers accounted for 44.6 percent of all drivers in crashes during 2015, which was up from 44.3 percent in 2006.

DRIVERS IN FATAL CRASHES		
Year	Male	Female
2006	1,080	416
2007	1,090	417
2008	976	414
2009	840	375
2010	916	374
2011	859	351
2012	936	368
2013	990	344
2014	893	315
2015	1,043	380



Male drivers made up 73.3 percent of all drivers in fatal crashes in 2015, which was up from 72.2 percent in 2006. Female drivers made up 26.7 percent of all drivers in fatal crashes in 2015, which was down from 27.8 percent in 2006.

DRINKING DRIVERS IN ALL CRASHES		
Year	Male	Female
2006	9,454	2,991
2007	9,095	2,928
2008	8,270	2,650
2009	7,881	2,613
2010	7,209	2,584
2011	7,094	2,574
2012	7,250	2,563
2013	7,105	2,522
2014	6,721	2,461
2015	6,816	2,519

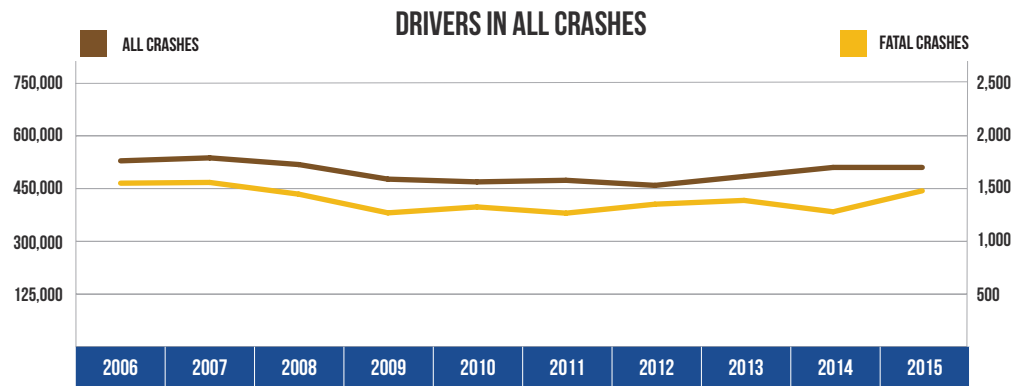


In 2015, males represented 73.0 percent of all drinking drivers, which was down from 76.0 percent in 2006. Females represented 27.0 percent of all drinking drivers in 2015, which was up from 24.0 percent in 2006.

Note: 39,723 drivers in all crashes, 56 drivers in fatal crashes, and 33 drinking drivers were coded as unknown gender in 2015 and are not included in the tables.

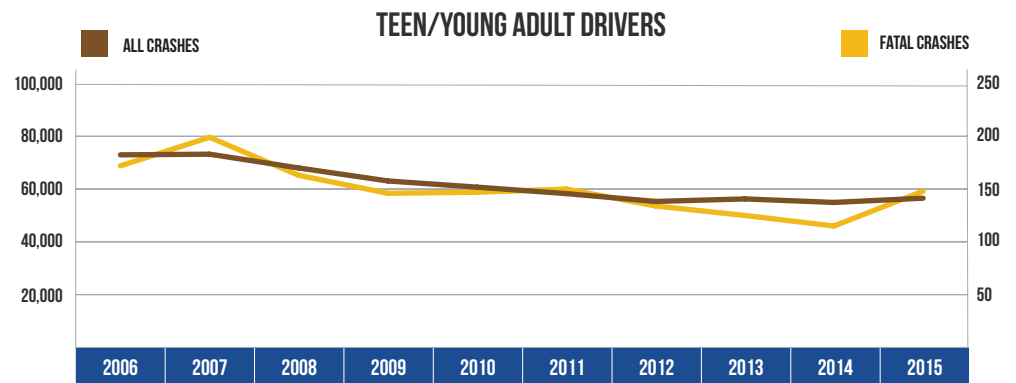
10 YEAR TRENDS-STATEWIDE (CONTINUED)

ALL CRASHES		
Year	All Crashes	Fatal Crashes
2006	528,763	1,551
2007	537,228	1,558
2008	518,240	1,447
2009	476,801	1,270
2010	468,968	1,326
2011	473,501	1,267
2012	459,030	1,352
2013	484,446	1,388
2014	510,086	1,280
2015	510,074	1,479



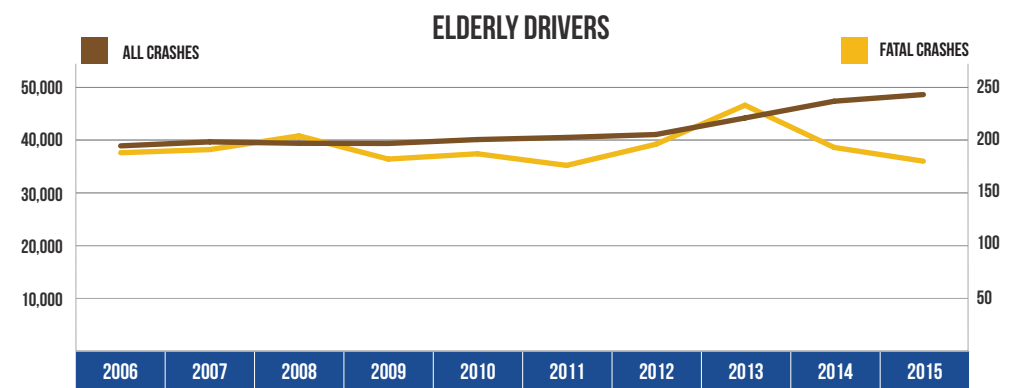
The number of drivers involved in all crashes decreased 3.5 percent over the 10-year period. The number of drivers involved in fatal crashes decreased 4.6 percent over the 10-year period.

TEEN/YOUNG ADULT DRIVERS (AGE 16-20)		
Year	All Crashes	Fatal Crashes
2006	72,957	172
2007	73,210	199
2008	67,982	163
2009	63,069	146
2010	60,721	147
2011	58,279	150
2012	55,307	134
2013	56,264	125
2014	54,935	115
2015	56,544	148



Teen/young adult drivers (age 16-20) represented 6.6 percent of the licensed drivers in 2015. The number of teen/young adult drivers in all crashes has decreased by 22.5 percent since 2006. Their involvement in fatal crashes has decreased 14.0 percent during the same time period.

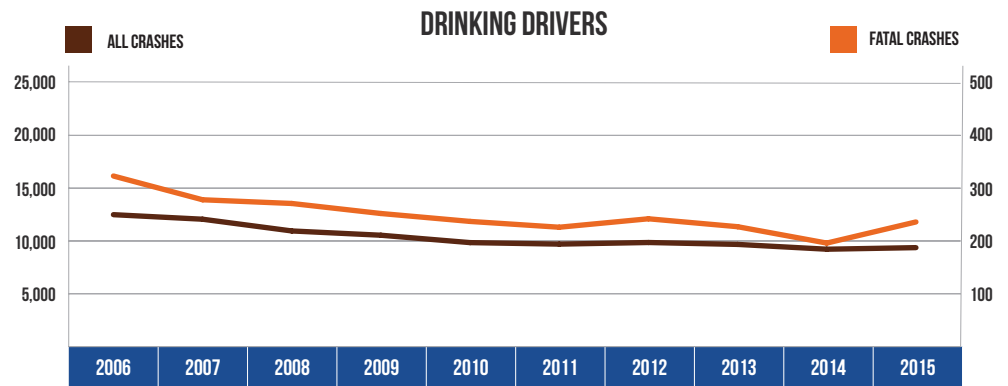
ELDERLY DRIVERS (AGE 65 & OVER)		
Year	All Crashes	Fatal Crashes
2006	38,899	188
2007	39,656	191
2008	39,388	204
2009	39,357	182
2010	40,096	187
2011	40,495	176
2012	41,047	196
2013	44,183	233
2014	47,356	193
2015	48,615	180



Elderly drivers (age 65 and over) represented 19.4 percent in 2015. The number of drivers age 65 and over in all crashes has increased 25.0 percent since 2006. Elderly driver involvement in fatal crashes decreased 4.3 percent during the same time period.

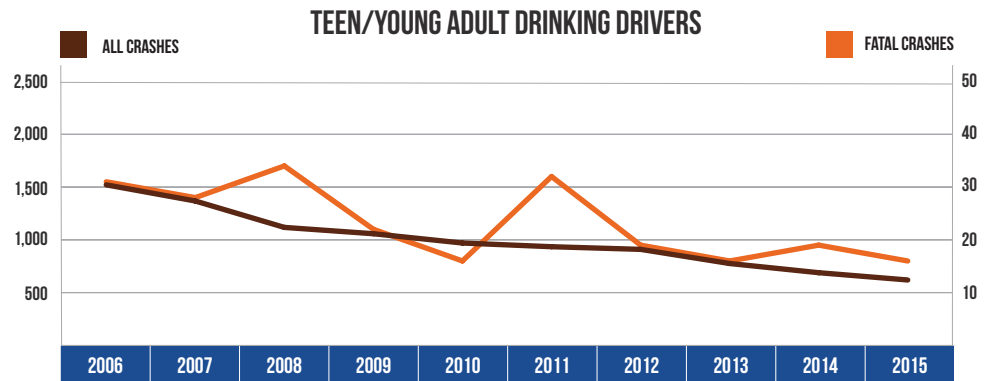
10 YEAR TRENDS-STATEWIDE (CONTINUED)

DRINKING DRIVERS		
Year	All Crashes	Fatal Crashes
2006	12,489	323
2007	12,059	278
2008	10,948	271
2009	10,542	252
2010	9,843	237
2011	9,701	226
2012	9,853	242
2013	9,673	227
2014	9,218	196
2015	9,368	236



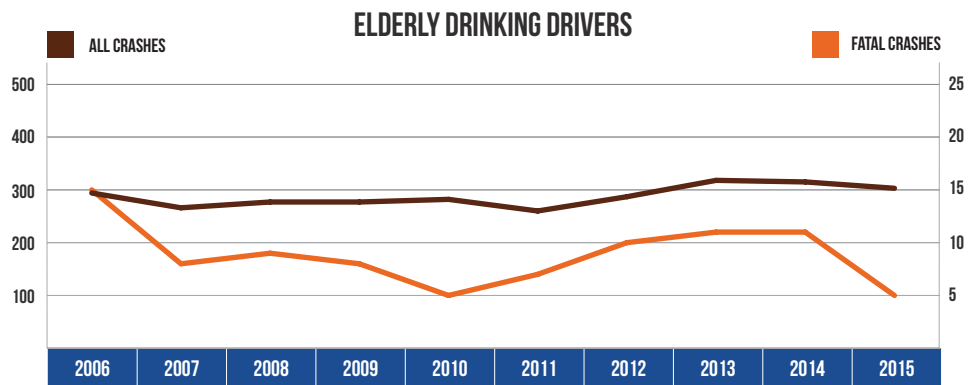
Drinking driver involvement in all crashes decreased by 25.0 percent from 2006. Drinking driver involvement in fatal crashes decreased by 27.0 percent from 2006.

TEEN/YOUNG ADULT DRINKING DRIVERS (AGE 16-20)		
Year	All Crashes	Fatal Crashes
2006	1,521	31
2007	1,368	28
2008	1,118	34
2009	1,058	22
2010	970	16
2011	935	32
2012	910	19
2013	776	16
2014	689	19
2015	621	16



The number of teen/young adult drinking drivers (age 16-20) in all crashes decreased by 59.2 percent, and their involvement in fatal crashes decreased by 48.4 percent from 2006.

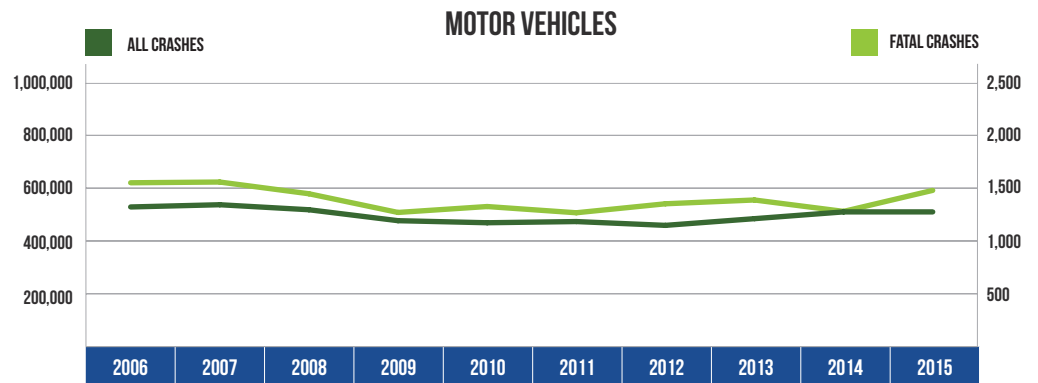
ELDERLY DRINKING DRIVERS (AGE 65 & OVER)		
Year	All Crashes	Fatal Crashes
2006	294	15
2007	266	8
2008	277	9
2009	277	8
2010	282	5
2011	269	7
2012	287	10
2013	318	11
2014	315	11
2015	303	5



The number of elderly drinking drivers (age 65 and over) in all crashes increased by 3.1 percent from 2006. Their involvement in fatal crashes decreased by 66.7 percent from 2006.

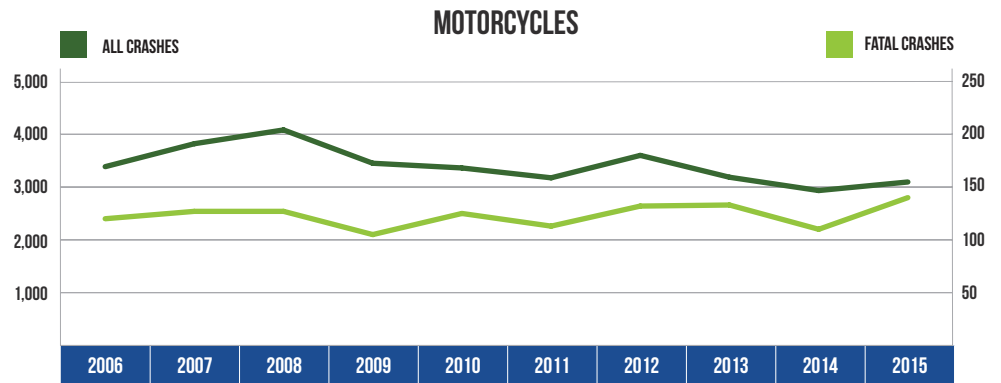
10 YEAR TRENDS-STATEWIDE (CONTINUED)

MOTOR VEHICLES		
Year	All Crashes	Fatal Crashes
2006	528,763	1,551
2007	537,228	1,558
2008	518,240	1,447
2009	476,801	1,270
2010	468,968	1,326
2011	473,501	1,267
2012	459,030	1,352
2013	484,446	1,388
2014	510,086	1,280
2015	510,074	1,479



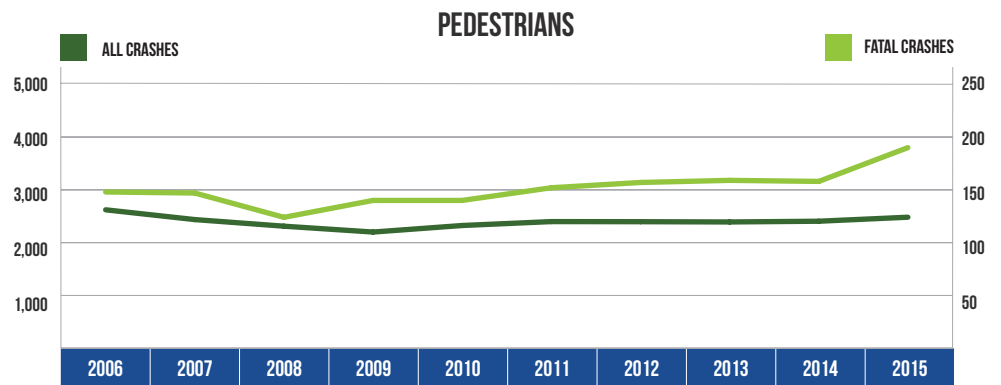
There were 510,074 motor vehicles involved in all crashes in 2015, down 3.5 percent from 2006. There were 1,479 motor vehicles involved in fatal crashes in 2015, down 4.6 percent from 2006.

MOTORCYCLES		
Year	All Crashes	Fatal Crashes
2006	3,386	120
2007	3,821	127
2008	4,082	127
2009	3,451	105
2010	3,362	125
2011	3,175	113
2012	3,600	132
2013	3,186	133
2014	2,934	110
2015	3,096	140



There were 3,096 motorcycles involved in crashes in 2015, a 8.6 percent decrease from 2006. There were 140 motorcycles involved in fatal crashes in 2015, up 16.7 percent from 2006.

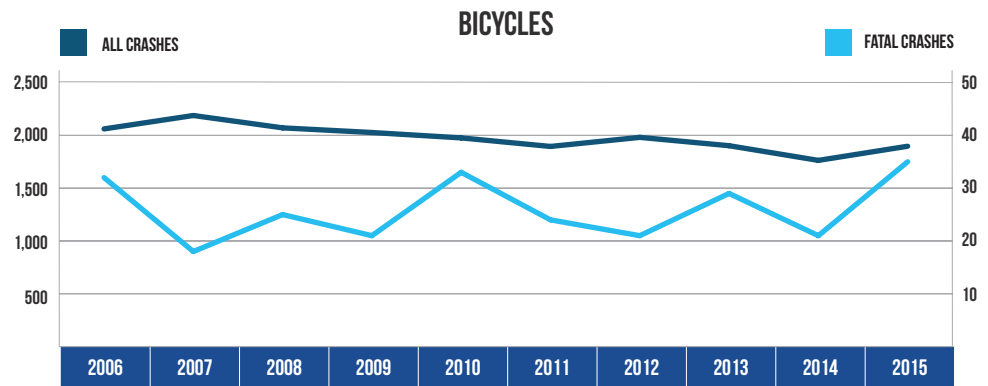
PEDESTRIANS		
Year	All Crashes	Fatal Crashes
2006	2,622	148
2007	2,422	147
2008	2,312	124
2009	2,201	140
2010	2,325	140
2011	2,399	152
2012	2,397	157
2013	2,392	159
2014	2,406	158
2015	2,482	190



There were 2,482 pedestrians involved in crashes in 2015, down 5.3 percent from 2006. There were 190 pedestrians involved in fatal crashes in 2015, up 28.4 percent from 2006.

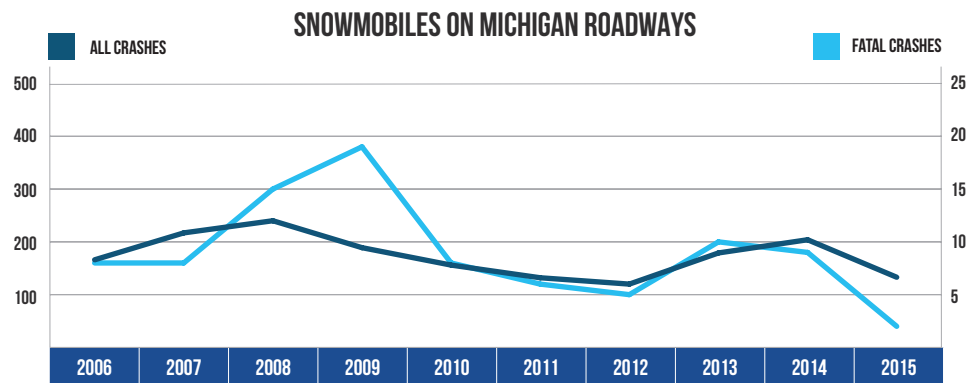
10 YEAR TRENDS-STATEWIDE (CONTINUED)

BICYCLES		
Year	All Crashes	Fatal Crashes
2006	2,061	32
2007	2,188	18
2008	2,071	25
2009	2,027	21
2010	1,976	33
2011	1,895	24
2012	1,981	21
2013	1,902	29
2014	1,763	21
2015	1,897	35



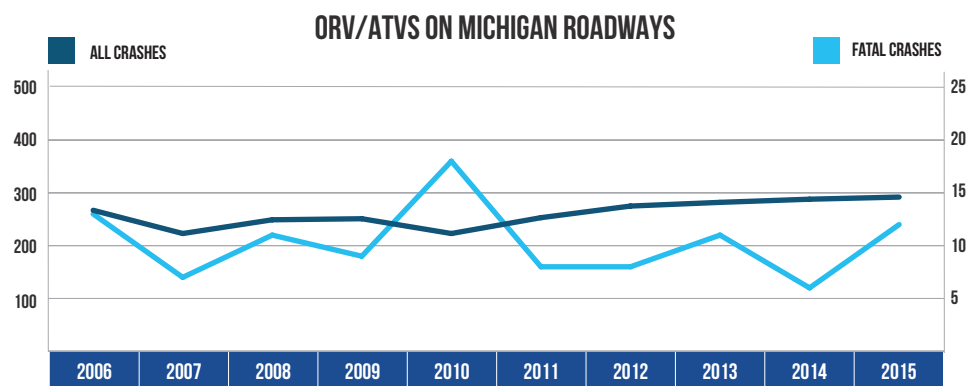
There were 1,897 bicycles involved in crashes in 2015, down 8.0 percent from 2006. There were 35 bicycles involved in fatal crashes in 2015, up 9.4 percent from 2006.

SNOWMOBILES ON MICHIGAN ROADWAYS		
Year	All Crashes	Fatal Crashes
2006	166	8
2007	217	8
2008	240	15
2009	189	19
2010	156	8
2011	132	6
2012	120	5
2013	179	10
2014	204	9
2015	133	2



There were 133 snowmobiles in crashes on roadways in 2015, down 19.9 percent from 2006. There were 2 snowmobiles in fatal crashes, down 75.0 percent from 2006.

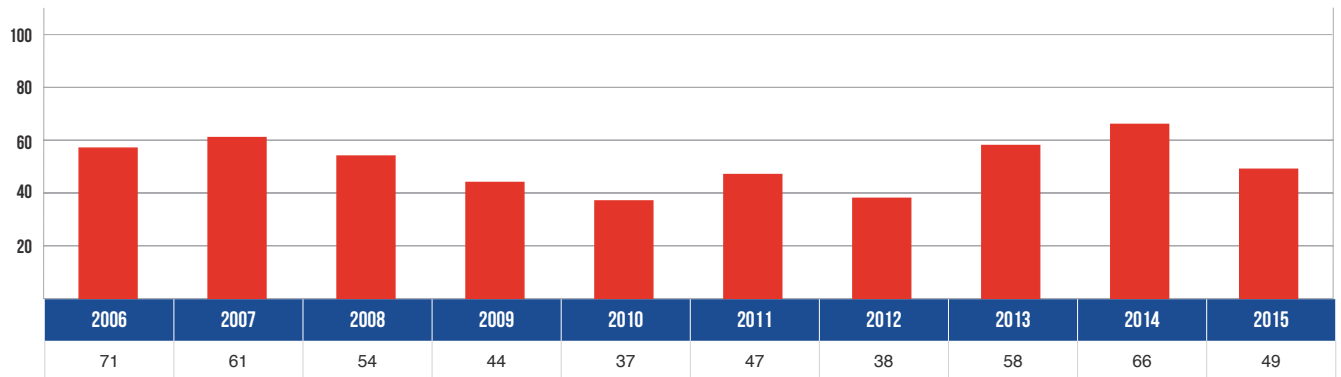
ORV/ATVS ON MICHIGAN ROADWAYS		
Year	All Crashes	Fatal Crashes
2006	267	13
2007	223	7
2008	249	11
2009	251	9
2010	223	18
2011	253	8
2012	275	8
2013	282	11
2014	288	6
2015	292	12



There were 292 ORV/ATVs in crashes on roadways in 2015, up 9.4 percent from 2006. There were 12 ORV/ATVs in fatal crashes, down 7.7 percent from 2006.

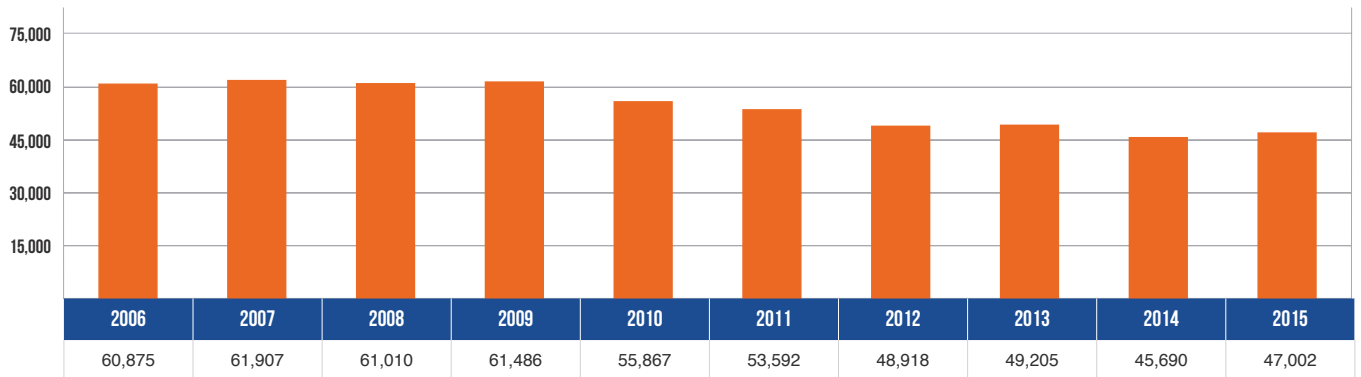
10 YEAR TRENDS-STATEWIDE (CONTINUED)

VEHICLE-TRAIN CRASHES



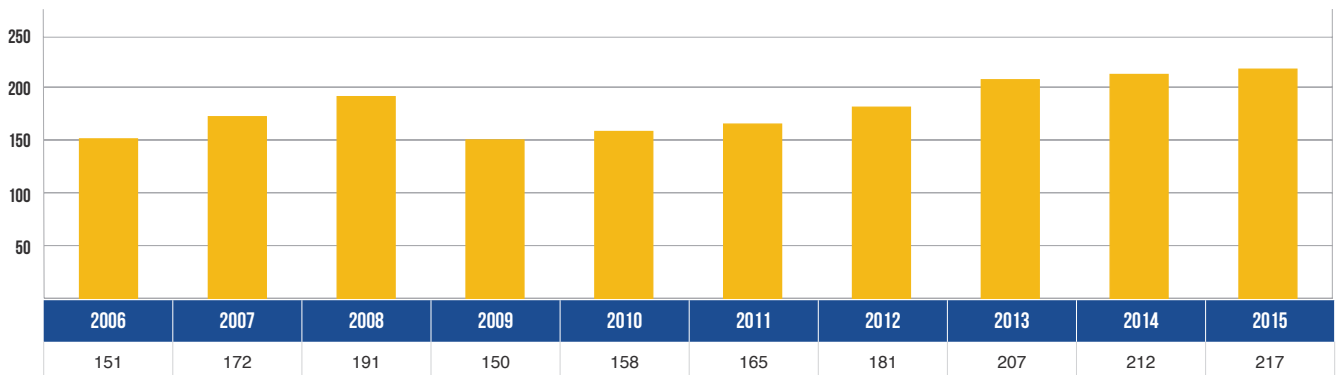
There were 49 vehicle-train crashes in 2015 – a decrease of 31.0 percent in the 10-year period.

VEHICLE-DEER CRASHES



There were 47,002 vehicle-deer crashes in 2015 – a decrease of 22.8 percent in the 10-year period.

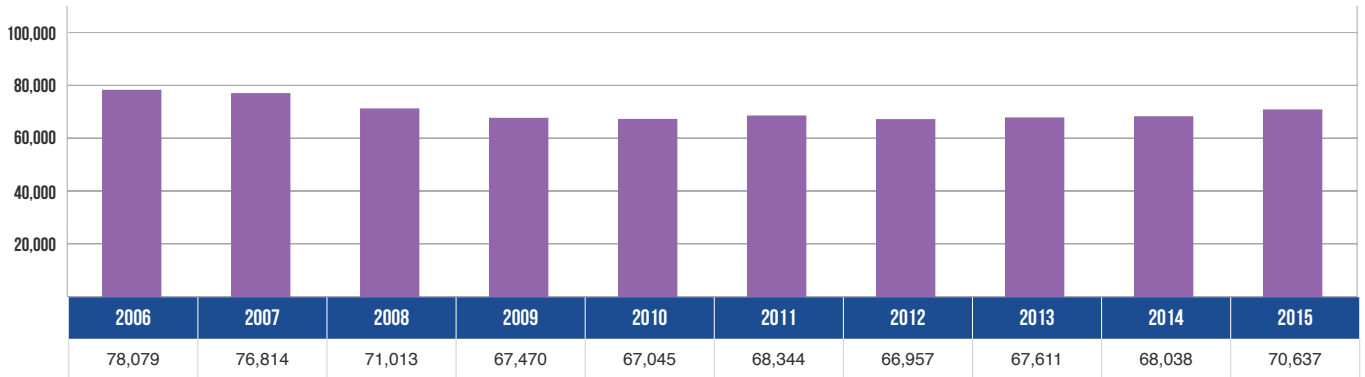
FARM EQUIPMENT CRASHES



There were 217 farm equipment crashes in 2015 – an increase of 43.7 percent from 2006.

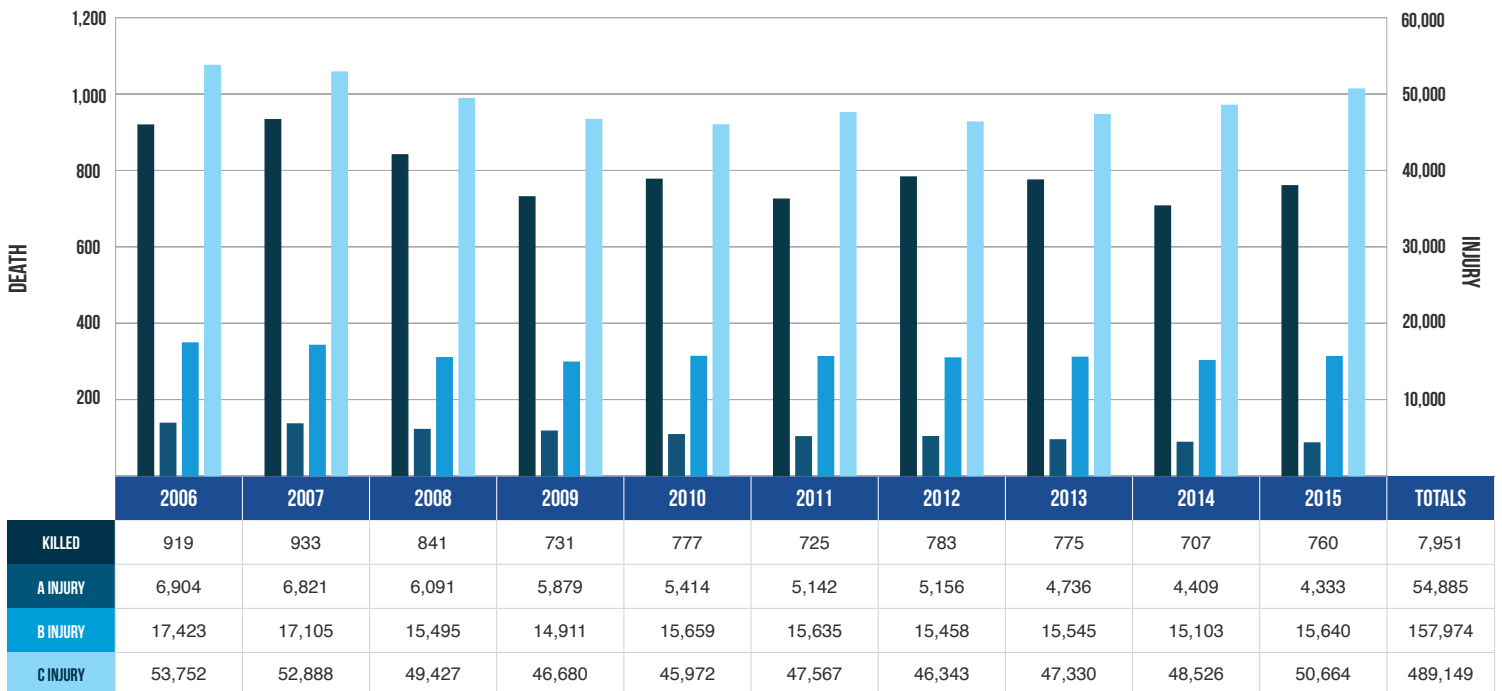
10 YEAR TRENDS-STATEWIDE (CONTINUED)

INJURED OCCUPANTS IN CRASHES



There were 70,637 occupants injured in crashes in 2015 – a decrease of 9.5 percent from 2006.

DEATH AND INJURY FOR CRASH-INVOLVED OCCUPANTS



Over the period from 2006 to 2015, occupant deaths decreased 17.3 percent, A injuries decreased 37.2 percent, B injuries decreased 10.2 percent, and C injuries decreased 5.7 percent.

Note: These figures contain the number of occupants recorded as injured by the police officer on the UD-10.

10 YEAR TRENDS-STATEWIDE (CONTINUED)

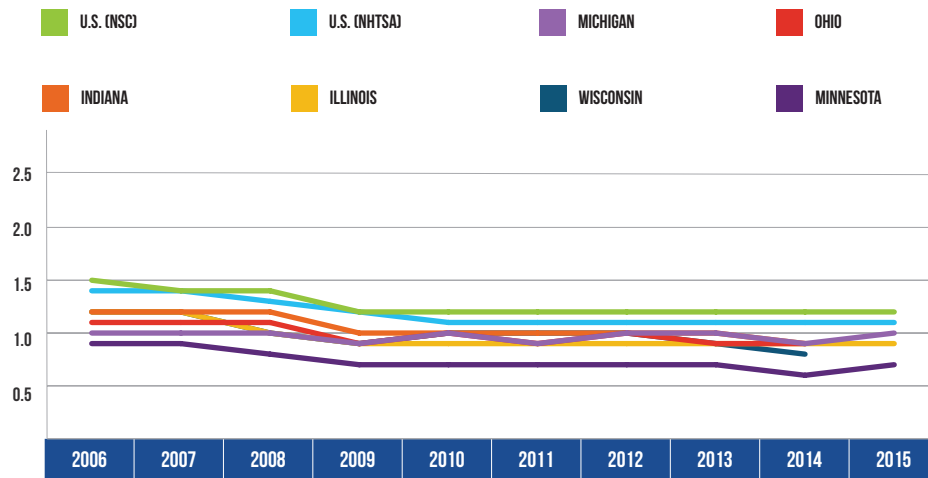
AVERAGE AGE OF DRIVERS IN CRASHES 2006 - 2015



Over the 10-year period, reflecting the demographic trend of increasing age in the general population, the average age of drivers involved in all crashes and fatal crashes has increased more than four percent in each category. The average age of drinking drivers in crashes has remained about the same. The average age of drinking drivers in fatal crashes has decreased more than three percent.

10 YEAR TRENDS-STATEWIDE (CONTINUED)

MILEAGE DEATH RATES 2006 - 2015



YEAR	U.S. (NSC*)	U.S. (NHTSA**)	MICHIGAN	OHIO	INDIANA	ILLINOIS	WISCONSIN	MINNESOTA
2006	1.5	1.4	1.0	1.1	1.2	1.2	1.2	0.9
2007	1.4	1.4	1.0	1.1	1.2	1.2	1.2	0.9
2008	1.4	1.3	1.0	1.1	1.2	1.0	1.0	0.8
2009	1.2	1.2	0.9	0.9	1.0	0.9	0.9	0.7
2010	1.2	1.1	1.0	1.0	1.0	0.9	1.0	0.7
2011	1.2	1.1	0.9	0.9	1.0	0.9	1.0	0.7
2012	1.2	1.1	1.0	1.0	1.0	0.9	1.0	0.7
2013	1.2	1.1	1.0	0.9	1.0	0.9	0.9	0.7
2014	1.2	1.1	0.9	0.9	0.9	0.9	0.8	0.6
2015	1.2	1.1	1.0	---	---	0.9	---	0.7

* National Safety Council (NSC) reports traffic and nontraffic deaths within a year of the crash.

**National Highway Traffic Safety Administration (NHTSA) reports only traffic deaths that occur within 30 days of the accident.

U.S. data for this table and tables on the following page were provided by the National Safety Council [3], the National Highway Traffic Safety Administration [4], and the Federal Highway Administration [5]. State data for this table and tables on the following page were provided by Ohio [6], Indiana [7], Illinois [8], Wisconsin [9], and Minnesota [10].

10 YEAR TRENDS-STATEWIDE (CONTINUED)

YEAR	U.S. (NSC) FATALITIES	U.S. (NHTSA) FATALITIES	MICHIGAN FATALITIES	OHIO FATALITIES	INDIANA FATALITIES	ILLINOIS FATALITIES	WISCONSIN FATALITIES	MINNESOTA FATALITIES
2006	44,700	42,642	1,084	1,239	899	1,254	712	494
2007	43,100	41,059	1,084	1,257	899	1,248	737	510
2008	39,800	37,261	980	1,191	815	1,043	587	455
2009	35,900	33,963	871	1,028	692	911	542	421
2010	34,700	32,885	937	1,081	754	927	562	411
2011	34,600	32,367	889	1,015	749	918	565	368
2012	36,200	33,561	936	1,122	779	956	601	395
2013	35,369	32,850	951	990	777	991	527	387
2014	35,400	32,675	876	1,008	743	924	498	361
2015	38,300	35,092	963	1,110	---	998	555	411

YEAR	U.S. (FHWA) VMT	MICHIGAN VMT	OHIO VMT	INDIANA VMT	ILLINOIS VMT	WISCONSIN VMT	MINNESOTA VMT
2006	2,995	104.0	112.1	74.2	106.8	59.4	56.6
2007	2,996	104.6	111.1	74.1	107.4	59.5	57.4
2008	2,929	100.9	108.3	68.0	105.6	57.5	57.3
2009	2,935	95.9	110.8	68.8	105.7	58.2	56.9
2010	3,000	97.6	113.5	72.9	105.7	59.4	56.8
2011	2,946	94.8	111.7	77.5	103.4	58.6	56.7
2012	2,954	94.3	111.5	76.0	104.5	59.1	57.0
2013	2,972	95.1	112.7	79.4	105.5	59.5	57.0
2014	3,016	99.1	112.8	81.4	105.0	60.0	57.4
2015	3,148	97.8	---	---	105.4	---	59.1

VMT described in billions of miles